

# New quick method for isolating RNA from laser captured cells stained by immunofluorescent immunohistochemistry; RNA suitable for direct use in fluorogenic TaqMan one-step real-time RT-PCR

Jack M. Gallup<sup>1\*</sup>, Kenji Kawashima<sup>2</sup>, Ginger Lucero<sup>3</sup> and Mark R. Ackermann<sup>1</sup>

<sup>1</sup>Department of Veterinary Pathology, College of Veterinary Medicine, Iowa State University, Ames, Iowa 50011-1250.

<sup>2</sup>Environmental Hygiene Section, Shichinohe Research Unit, National Institute of Animal Health. 31 Uminai, Shichinohe, Aomori 039-2586, Japan.

<sup>3</sup>Invitrogen R&D, Carlsbad, CA 92008.

\*Corresponding Author: Jack M. Gallup, Department of Veterinary Pathology, College of Veterinary Medicine, Iowa State University, Ames, Iowa 50011-1250. Email: eag@iastate.edu

Submitted: March 21, 2005; Revised: May 12, 2005; Accepted: May 12, 2005.

Indexing terms: Immunohistochemistry; Sheep; Gene Expression; Polymerase Chain Reaction.

---

## ABSTRACT

We describe a new approach for reliably isolating one-step real-time quantitative RT-PCR-quality RNA from laser captured cells retrieved from frozen sections previously subjected to immunofluorescent immunohistochemistry (IF-IHC) and subsequently subjected to fluorogenic one-step real-time RT-PCR analysis without the need for costly, time-consuming linear amplification. One cell's worth of RNA can now be interrogated with confidence. This approach represents an amalgam of technologies already offered commercially by Applied Biosystems, Arcturus and Invitrogen. It is the primary focus of this communication to expose the details and execution of an important new LCM RNA isolation technique, but also provide a detailed account of the IF-IHC procedure preceding RNA isolation, and provide information regarding our approach to fluorogenic one-step real-time RT-PCR in general. Experimental results shown here are meant to supplement the primary aim and are not intended to represent a complete scientific study. It is important to mention, that since LCM-RT-PCR is still far less expensive than micro-array analysis, we feel this approach to isolating RNA from LCM samples will be of continuing use to many researchers with limited budgets in the years ahead.

---

## INTRODUCTION

About 9 years ago (in 1997), Lance Liotta, M.D., Ph.D., chief of the Laboratory of Pathology at the National Cancer Institute, and his laboratory published an article in *Science* that described the process of laser capture microdissection (LCM). This invention was driven by the need to isolate pure pre-malignant cells from the native surrounding tissue to facilitate the study of molecular events leading to invasive cancer, and has helped to advance science in many ways. LCM has enabled researchers to analyze purified populations of cells directly from patient tissue

samples and to achieve accurate molecular analyses in such samples. By using a low-power infrared laser to capture individual cells or pure cell populations, LCM ensures that RNA and DNA remain undamaged during the microdissection process. To study the genetic changes that occur in transition from a normal to an invasive cell, cell subpopulations, sometimes representing <5% of the total tissue, need to be isolated to reduce contamination from other cell types. Before LCM, the process of isolating specific cell populations from tissue was extremely difficult. To perform LCM, a slide containing tissue of interest is placed under a microscope

and the image is brought up on a computer screen. Cells of interest are selected with a joystick and at the push of a button an infrared laser melts a special film above the targeted cells. The film then sets, and the user pulls the chosen cells away from the tissue slide. These selected cells are ready for molecular analysis (i.e. RNA isolation and one-step fluorogenic real-time RT-PCR). The remaining tissue on the slide is still intact and can be subjected to further dissection (if the tissue is still sufficiently dehydrated). It has been observed that microdissected cells display very different genetic profiles when compared to cultured cells. Many new genes have been identified in microdissected cells. In contrast to cells in culture, cells obtained by LCM are in their natural environment and express their 'true' set of genes, and are therefore thought to be better suited for molecular analysis (1). LCM technology is applied using the AutoPix and PixCell II LCM instruments available exclusively from Arcturus (please see the following link to Arcturus for more details on the history, application and other LCM-related information: [http://www.arctur.com/lab\\_portal/support/faq/](http://www.arctur.com/lab_portal/support/faq/)). Extraction of RNA from LCM samples for use in one-step real-time RT-PCR has been approached several ways over the past few years, and this publication describes for the first time, the shortest, most fail-safe method for LCM sample RNA extraction which combines the use of technologies developed by three major companies; Invitrogen, Applied Biosystems Inc., and Arcturus. Our direct work with Invitrogen on this procedure, we feel, represents a major breakthrough since we have identified the crucial points during LCM RNA isolation which most affect the usability of the resulting LCM sample isolates in the one-step real-time RT-PCR application. We can now consistently detect our one-step real-time qRT-PCR targets of interest within single cell amounts of total LCM cell [RNA] isolate.

## EXPERIMENTAL PROCEDURES

### Immunofluorescence immunohistochemistry

Freshly-necropsied lung tissues from sheep are placed into plastic disposable base molds (disposable base molds, Cat. No. 03040, Surgipath Medical Industries Richmond, IL) containing OCT (Cat. No. 25608-930, Tissue-Tek OCT, VWR International, Batavia, IL), more

OCT is applied over the tissues, and these are then placed onto blocks of dry ice until the tissues and OCT are frozen to a solid white. All samples are then transferred immediately to  $-80^{\circ}\text{C}$  for storage. LCM tissues are cut with a cryostat (Leica CM 1900) into  $6\ \mu\text{m}$  LCM sections, and sections are placed onto precleaned superfrost plus  $25 \times 75 \times 1\text{mm}$  glass slides (Cat. No. 48311-703, VWR Scientific, West Chester, PA) at  $-25^{\circ}\text{C}$  (see Fig. 15). This procedure is considered a standard Leica microtome procedure (see: <http://www.hbu.de/range.htm>). In accordance with Arcturus (Arcturus, Mountain View, CA) protocol suggestions, we did not dry the sections after cutting, we instead stored them (directly after cutting onto slides) first at  $-20^{\circ}\text{C}$  in a box inside the cryostat itself, then at  $-80^{\circ}\text{C}$  for durations of anywhere from 0 to 8 days (with no additional OCT applied) without noticeable loss of immunofluorescence or real-time signals from all such sections. After 8 days, real-time signals started showing a severe decline. Upon retrieval from  $-80^{\circ}\text{C}$  for use in IF-IHC-LCM, slides are either treated as in Figure 16 (in cases where no IF-IHC procedure is to precede LCM) or, they are quickly transferred into cold nuclease-free PBS (made with HPLC-grade water, Fisher Scientific, Hanover, IL, PBS tablets and 0.1% Tween 20, Sigma, St. Louis, MO) within 30 seconds of their removal from the freezer (apparently, RNA degradation sets in very rapidly if this particular maneuver is not performed quickly; according to an Arcturus field technician). The PBS is inside 5-slide plastic mailers (Cat. No. 240-3074-030, Evergreen Scientific, Los Angeles, CA). After 1 minute in cold PBS, slides are moved into a fresh cold ( $4-8^{\circ}\text{C}$ ) PBS bath for 5 minutes. Carefully, a small region above and below each tissue is dried off with a clean absorbent Terri cloth, and a PAP-pen (liquid wax pen from BioGenex, San Ramon, CA) is used to draw a line above and below each tissue section on each slide (care is taken to avoid flooding liquid wax over the sections by pressing down too hard on the PAP-pen during use; these pens are not certified to be nuclease-free so be extra careful where their contents end up). Next, an IF-IHC procedure is carried out as follows: after all IF-IHC reagents are pre-cooled to  $4^{\circ}\text{C}$ , blocking solution (comprised of 1% normal goat serum "NGS," Sigma, and 1% normal swine serum "NSS," Invitrogen, Grand Island, NY, added to Common Antibody Diluent, BioGenex) is added to the sections for 5 minutes. Then, in

a cold room at 4°C (Figs. 1 and 2), sections are incubated for 10 minutes with a primary:biotinylated-secondary-antibody complex (prepared by mixing equal volumes of primary mouse monoclonal anti-human CD208 IgG (Cat. No. IM3448, anti-human CD208 (DC-LAMP) purified 0.2 mg/ml, Beckman Coulter, Miami, FL) or mouse monoclonal anti-bRSV-4 IgG (Dr. Kenneth Platt, CVM/ISU, Ames, IA) and a 1 mg/ml solution of biotinylated goat anti-mouse secondary IgG (in 50% glycerol) (Kirkegaard & Perry, Gaithersburg, MD)), with an additional amount of BioGenex Common Antibody Diluent (comprising 28% of the final primary-biotinylated secondary mixture volume) (see Figs. 1 and 2 for set-up depictions).



**Fig. 1:** 2 slides being stained by IF-IHC (preceding LCM) are shown in the middle of a metal slide rack within a larger, humidified and sealable container.

This mixture is vortexed gently then incubated for 45 minutes to 1 hour at 37°C (this is routinely performed a day prior to the IF-IHC-LCM procedure). Slides are subsequently washed three times with cold nuclease-free PBS + 0.1% Tween 20 within 2 minutes, then Cy3-streptavidin reagent (Rockland, Inc., Gilbertsville, PA), diluted 1:300 (with BioGenex Common Antibody Diluent containing 1% NGS and 1 %NSS) is added to the sections for 10 minutes, followed again by three washes with cold nuclease-free PBS + 0.1% Tween 20, within 2 minutes. For dehydration prior to LCM, sections are put through a series of solvents also contained in nuclease-free 5-slide plastic mailers. First, sections are placed into nuclease-free 75% ethanol for 30 seconds, 95% nuclease-free

ethanol for 30 seconds, twice into extra-dry or very fresh 100% ethanol for 30 seconds, ultra fresh xylene for 5 minutes, then again into ultra fresh xylene for 10 minutes up to 2 hours (this parameter is left adjustable depending on how many slides one is handling).



**Fig. 2:** For Immunofluorescence Immunohistochemistry (IF-IHC) procedure: Humidified chamber (containing the slides on the metal slide rack) being placed inside a cold room at 4°C. Notice the small leveling device atop the container to ensure that reagent run-off is not allowed.

### Laser capture microdissection (LCM)

Just before LCM, slides are dried for 15 minutes under a laminar flow hood and immediately placed inside a desiccator (with fresh desiccant) until subjected to LCM. LCM is routinely performed on each section within  $40 \pm 20$  minutes of their removal from ultra fresh xylene.



**Fig. 3:** The Arcturus PixCell II LCM System.

Gallup *et al.* - New quick method for isolating RNA from laser captured cells stained by immunofluorescent immunohistochemistry; RNA suitable for direct use in fluorogenic TaqMan one-step real-time RT-PCR

The LCM laser power settings (on the PixCell II LCM system, Arcturus, Figs. 3-5) we use for cell capture typically start at 80 milliwatts (mW) for a duration of 800  $\mu$ sec (giving us a calculated spot size of 10  $\mu$ m); but these settings are frequently adjusted in order to address each slide individually to optimize cell pick-up (up to 100 mW for 1 msec).



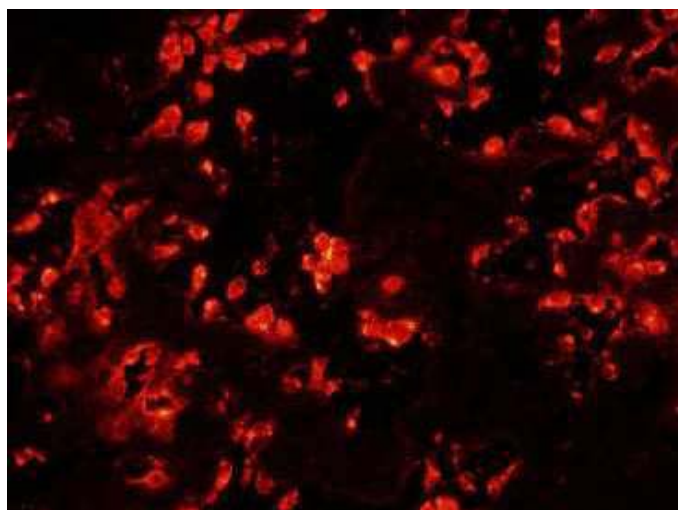
**Fig. 4: Another view of the PixCell II LCM system.**

Most single laser shots exacted on our ovine lung sections result in the capture of 1 to 3 cells at a time, even when the laser spot is adjusted to its smallest possible diameter, so great care is taken to make sure only specifically-intended cells and/or groups of cells are accurately retrieved.



**Fig. 5: Using fluorescence for IF-IHC-stained sections during LCM.**

For lung tissue, we typically use an objective lens setting of 20X to inspect our IF-IHC stained sections during laser capture; the field images are clear and identifying different cell types is relatively easy (Figs. 6-8). After all cells of interest are harvested onto HS LCM caps (Cat. No. LCM 0214, Arcturus), total RNA is isolated from captured cells using our own method (Figs. 17-22) which represents a combination of Arcturus, Invitrogen (2), and Applied Biosystems (ABI, Foster City, CA) reagents, products and procedures (a method which is currently being optimized by Invitrogen in collaboration with us to form an appropriate one-step master mix compatible with SuperScript III RT enzyme for reverse transcription).

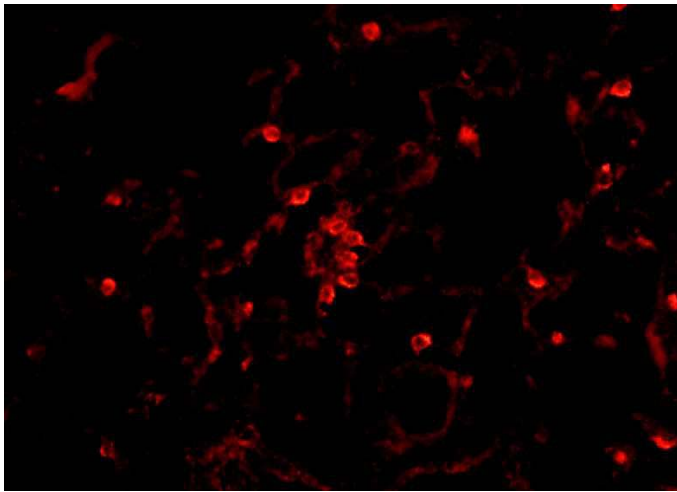


**Fig. 6: IF-IHC staining for bRSV antigen using Cy3; viewed on a regular fluorescence microscope.**

Briefly, 100-300 cells (100 laser shots) of a particular cell type, as identified during LCM either by IF-IHC or morphology, are laser captured onto HS LCM caps using a PixCell II laser capture microdissection microscope (LCM, Arcturus). We have captured samples using 500 and 1000 laser shots in the past (in order to increase the percentage of intended cell targets and minimize cross-contaminating cell populations), but it proved to be very time consuming and we frequently ran into the problem of depleting our intended cell types before capturing 500 or 1000 spots. We subsequently found that 100-shot samples yielded the same results as 1000-shot samples (and later found that 20-shot samples worked best). In our studies, cells that are CD208+ (Fig. 7), CD208-, bRSV+ (Figs. 6 and 8) or bRSV- are considered to be type II

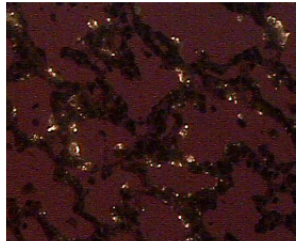


pneumocytes, type I pneumocytes, viral antigen-containing or viral antigen-non-containing cells, respectively.

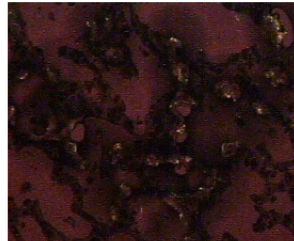


**Fig. 7: IF-IHC staining for alveolar type II cells (marker, CD208) using Cy3; viewed on a regular fluorescence microscope.**

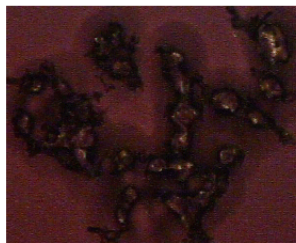
Other captured populations include cells adjacent to or nearby bRSV antigen-containing cells, while bronchiolar epithelial cells were identified and captured solely on the basis of morphology.



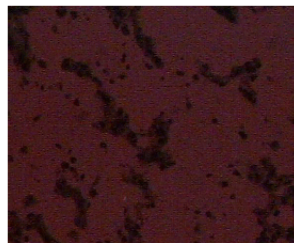
bRSV IF-IHC on infected lung



Laser shots to bRSV+ cells



The cells captured by LCM



The lung tissue after LCM

**Fig. 8: IF-IHC images obtained during LCM (Cy3 appears as a yellowish fluorescence).**

### New approach to LCM RNA isolation

This new approach to RNA isolation from laser captured cells involves the removal of the small round polymer tab from each HS LCM cap (onto which the cells have

been melted by the laser during capture) and processing them directly. If one looks closely, one will see that this laser-meltable polymer surface is actually applied to each cap as a small round 'sticker' on the laser capture surface. Immediately post capture, these tab/polymer stickers are peeled away from each cap with a nuclease-free instrument (e.g. forceps pre-treated by baking at 180°C for 6 hours and then sprayed with Ambion's RNase ZAP then rinsed with nuclease-free water) and each is placed into a separate 0.5 ml nuclease-free microfuge tube (Product #N8010611, GeneAmp Tube, ABI) already containing 10 µl of Lysis Buffer (made up of Invitrogen's Resuspension Buffer, Lysis enhancer and RNaseOUT reagents mixed 10 to 1.1 to 1, e.g. 10:1.1:1, respectively). The tubes are incubated at 50°C for 10 minutes in a thermocycler, briefly spun down, and the samples are transferred to new 0.5 ml tubes (leaving polymer tabs and attached cytoskeletal husks behind in the old tubes) and incubated in a thermocycler at 75°C for 5 minutes. 1.6 µl 10X DNase I buffer (200 mM TRIS:HCl pH 8.4, 40 mM MgCl<sub>2</sub>, 500 mM KCl, Invitrogen) and 5 µl of DNase I (Amplification Grade DNase I, Invitrogen) are added and vortexed gently into each sample, each is briefly spun down, and this is followed by a room temperature incubation of 5 minutes (to allow the Amp-Grade DNase I to degrade genomic DNA), and samples are again incubated at 75°C either in the Arcturus Incubation Block for 5 minutes, or in a regular tube rack for 15 minutes to heat-denature DNase I enzyme without adding EDTA (we found that adding EDTA here severely inhibited all real-time reactions using the ABI one-step Master Mix used in this study). Next, to minimize non-specific adhesion of RNA to positively-charged plastic surfaces (in tubes and plates), we add glycogen (Ultrapure Glycogen, 20 µg/µl, Invitrogen) to each sample (far in excess, >27,000 times, that of the RNA in each sample) so it will most likely bind the positively-charged plastic surfaces preferentially over the RNA in each sample (3). The glycogen stock solution is made by diluting Ultrapure Glycogen (Invitrogen) with nuclease-free water (Molecular Grade Water, Cat. No. E476-5, MidWest Scientific) and 19.4 µl of a 1.4274 µg/µl glycogen solution is added to each sample. The concentration of glycogen stock solution will vary depending on what final sample volumes are to be prepared (e.g. 36 µl final sample volumes are prepared here). The goal is to have glycogen

Gallup *et al.* - New quick method for isolating RNA from laser captured cells stained by immunofluorescent immunohistochemistry; RNA suitable for direct use in fluorogenic TaqMan one-step real-time RT-PCR

end up at the correct desired  $\mu\text{g}/\mu\text{l}$  in each of the final LCM RNA sample preparations so that its final concentration during real-time RT-PCR never rises above  $0.2 \mu\text{g}/\mu\text{l}$  in each final reaction well – an amount that is roughly equivalent to the suggested use of yeast tRNA in the same regard – and which is safely below the ‘ $2 \mu\text{g}/\mu\text{l}$  glycogen limit’ (above which it has been reported to inhibit PCR reactions) (4). After glycogen addition, samples are gently vortexed and subsequently spun down to collect. Sample extracts are then transferred to new nuclease-free  $0.2 \text{ ml}$  microvials (MidWest Scientific) and the desired final volume of  $36 \mu\text{l}$  for each sample is additionally ascertained during this final sample transfer (or samples are used right away in the real-time RT-PCR application and not transferred). [Note: when we opt to use the RNA samples right away (i.e. without freezing at  $-80^\circ\text{C}$ ), we take advantage of the last heating step at  $75^\circ\text{C}$  (see above) by letting it serve not only as the DNase I denaturing step, but also as the template linearization step; so samples are placed on ice for at least 1 minute after this step and then considered ready for real-time RT-PCR at that point]. Before use, isolates that were stored at  $-80^\circ\text{C}$  are heated for 5 minutes at  $65^\circ\text{C}$  (in a GeneAmp 2400 thermocycler, Perkin Elmer/ABI) followed by snap-cooling on ice for at least 1 minute to ensure template linearity before use as templates for fluorogenic one-step real-time RT-PCR. Samples are spun down, and  $7.8 \mu\text{l}$  of each is used as “RNA template” in  $30\text{-}\mu\text{l}$  fluorogenic one-step real-time RT-PCR reactions as carried out in 96-well PCR reaction plates (ABI) using a GeneAmp 5700 Sequence Detection System (ABI) for detection and relative quantification of five mRNA targets of interest to us; ovine surfactant protein A (SP-A), ovine surfactant protein D (SP-D), sheep beta-defensin-1 (SBD-1) bovine/ovine toll-like receptor 4 (TLR4) and ovine monocyte chemoattractant protein 1-alpha (MCP-1 $\alpha$ ). For a detailed (EXCEL file) look at this particular RNA sample isolation approach, refer to Figure 17 (which represents all optimized mathematical aspects of the LCM sample RNA isolations). Linear amplification is not pursued in our approach for a number of reasons: 1) It defeats the purpose of a quick method (linear amplification of LCM RNA can take up to three days in practice), 2) It is costly, (e.g. a commercial amplification kit “RiboAmp HS RNA Amplification Kit” costs \$695 minimum), and 3) Any tampering with RNA samples in effort to amplify or

reverse transcribe into cDNA invites the risk of skewing original RNA profiles, and this in turn can compromise real-time qPCR results when such manipulated nucleic acid species are used as templates.

### Real-time TaqMan assay principle

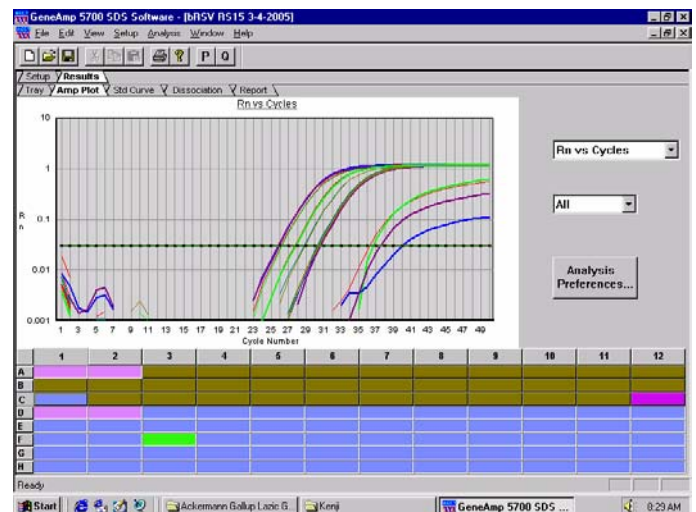
The principle of the TaqMan reaction is based on the use of fluorogenic probes designed to hybridize to the gene target sequence of two PCR primers. Each probe contains a 5' fluorescent reporter dye and a 3' quencher dye. In the intact probe, the presence of the 3' quencher inhibits the 5' reporter emission by quenching its energy emission. During the extension phase of PCR cycling, the annealed probe is cleaved by the 5'→3' exonuclease activity of Taq polymerase. This cleavage produces an increase in fluorescence emission of the reporter dye. This event occurs each PCR cycle only if the probe has annealed to the target sequence, which leads to an increase of fluorescence proportional to the initial concentration of target sequences in the sample. Such real-time fluorescence detection is performed by the ABI PRISM 7700 Sequence Detector (Applied Biosystems, Inc.). In this instrument, a 96-well thermal cycler is connected by fiber optic cables to a CCD camera detector. Laser excitation (488 nm) and fluorescence detection (between 520 and 660 nm) are performed every 7 seconds during the entire PCR cycling. The signal attributable to the 5' nuclease reaction is expressed as Rn values, which represent reporter signal normalized against the emission of a passive reference (ROX) minus the baseline signal established in the first cycles of PCR (conventionally collected from cycles 3-10 on ABI 7300, 7500 and 7700 machines, or from cycles 6-15 on the GeneAmp 5700 machine). This range can also be increased up to the cycle immediately prior the appearance of the fluorescent signal of more concentrated templates, according to the different kinetics of amplification. This value increases during PCR because the amplicon copy number increases until the reaction approaches a plateau. At the same time, the algorithm determines the threshold cycle ( $C_T$ ), which represents the PCR cycle at which an increase in reporter fluorescence above a baseline signal can first be detected. The sequence detection software generates a calibration curve of  $C_T$  vs quantity of reference template, and then

determines unknowns (quantities) by interpolation. To obtain accurate  $C_T$  values, the baseline needs to be set at least two cycles earlier than the  $C_T$  value for the most abundant sample. For real-time quantitative RT-PCR data to be meaningful, the threshold should be set when the product is in exponential phase. Typically this is set at least 10 standard deviations from of the baseline. The efficiency of the reaction can be calculated from signals generated from a target dilution series by the following equation: amplification efficiency =  $10^{(-1/\text{slope})}-1$  (this is not to be confused with “exponential amplification” which =  $10^{(1/\text{slope})}$ ). The efficiency of the PCR, ideally, should be 90-110% ( $3.6 \geq \text{slope} \geq 3.1$ ). A number of variables can affect the efficiency of the PCR; length of the amplicon, secondary template structure, and primer design, to name a few. Although valid data can be obtained that fall outside of the efficiency range, the quantitative RT-PCR should be further optimized or alternative amplicons designed (3). For more extensive background on the principles of fluorogenic one-step and two-step real-time RT-PCR, visit <http://www.ambion.com> or <https://www.appliedbiosystems.com> or <http://www.invitrogen.com>.

### Real-time reagents, parameters and considerations

In the current communication, master mix and reverse transcriptase (RT) enzyme are used as suggested and provided in a commercially available kit (Cat. No. 4309169, TaqMan® One-Step RT-PCR Master Mix Reagents Kit, ABI). The Multiscribe™ (MuLV) RT enzyme (10 U/ $\mu$ l) included in the kit arrives already pre-mixed with RNase inhibitor (40 U/ $\mu$ l, ABI) as a 40X solution. The one-step master mix (which contains AmpliTaq Gold hot-start DNA Polymerase, 5.5 mM MgCl<sub>2</sub>, 10 mM of each A, C and G dNTP's and 20 mM dUTP, ROX passive internal reference molecule, a PCR product carryover correction component, other ABI-proprietary buffer components, but no AmpErase UNG enzyme) arrives as a separate 2X solution (5 ml total) in the kit. Each of our 30  $\mu$ l one-step real-time RT-PCR reactions contain: 15  $\mu$ l one-step Master Mix, 0.25 U/ $\mu$ l Multiscribe™ RT enzyme, 0.4 U/ $\mu$ l RNase inhibitor,

optimal forward and reverse primer and fluorogenic probe concentrations (previously established for each target using two-step real-time RT-PCR according to classic ABI protocol, see below), nuclease-free water, and 7.8  $\mu$ l of each LCM-[RNA template] cell extract isolate. Before use, all solutions are gently vortexed and spun down. Our thermocycling conditions for fluorogenic one-step RT-PCR are: 35 minutes at 48°C (for reverse transcription; normally 30 minutes; ABI), 10 minutes at 95°C (for AmpliTaq Gold DNA polymerase hot-start activation), and 50 cycles of: 15 seconds at 95°C (for duplex melting), 1 minute at 58°C (for annealing and extension; normally 60°C; ABI). [Note: we altered the ABI-suggested thermocycling conditions for their one-step master mix in favor of what we found to be more optimal for our particular targets]. For recent real-time results using this IF-IHC-LCM-RT-PCR method, see Figures 9-10.

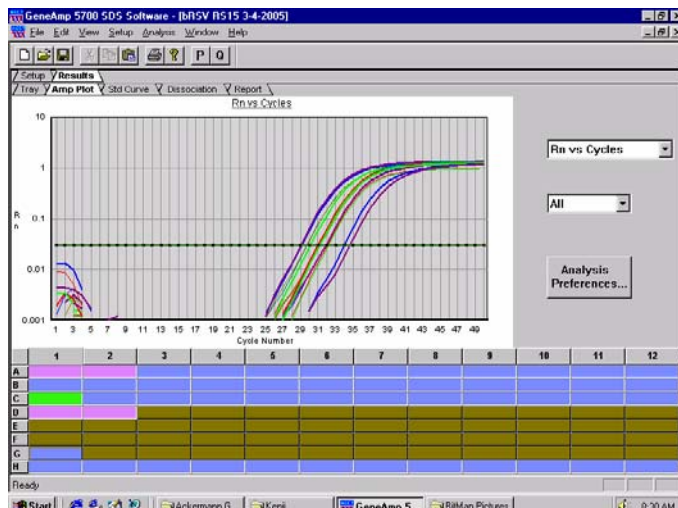


**Fig. 9: Bovine respiratory syncytial virus (bRSV) RNA signal: The bRSV amplification plots here correspond to each of the samples in Figure 10 (below) analyzed for ovRS15.** These signals were attained from the equivalent of RNA from about 21 cells in each case.

In addition, Figure 11 shows that we have recently detected one-step real-time RT-PCR signal in samples containing RNA from the equivalent of a single cell (using the common assumption that one mammalian cell contains 10-30 pg of total RNA, but upon isolation, yields ~10 pg of RNA).

Gallup *et al.* - New quick method for isolating RNA from laser captured cells stained by immunofluorescent immunohistochemistry; RNA suitable for direct use in fluorogenic TaqMan one-step real-time RT-PCR

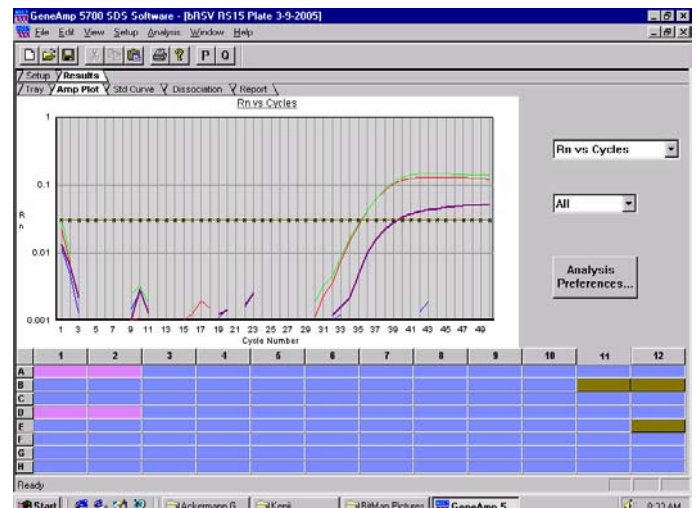




**Fig. 10: Ovine Ribosomal S15 mRNA signal:** The ovRS15 amplification plots below correspond to each of the samples in Figure 9 analyzed for bRSV (above). These signals were attained from the equivalent of RNA from about 21 cells in each case.

We abandoned the use of 18S Ribosomal RNA as housekeeper (see also Appendix A, item 6), since the primers and probe provided as part of an ABI RNA control reagents kit were of a faulty design (22). Instead, we used ovine ribosomal protein S15 (ovRPS15) as the housekeeping (endogenous reference) gene, the sequence of which we received from Dr. Sean Limesand (Department of Pediatrics University of Colorado Health Sciences Center, Perinatal Research Center, PO Box 6508, F441, Aurora, Colorado 80045), which he had successfully cloned into a pCRII plasmid and used as a housekeeping gene with conventional PCR work in sheep pancreas:

ovRPS15 in pCRII as read from the T7 promoter: 5'-TTCCGCAAGTTCACCTACCGCGGCGTAGACCTCGA CCAGCTGCTGGACATGTCCTATGAGCAACTGATGC AGCTATACAGCGCGCCAGCGACGGCGGCTGAA CCGCGGCTGCGGAGGAAGCAGCACTCGTTGCTG AAGCGGCTGCGCAAGGCCAAGAAAGATGCGCCGC CCATGGAGAAGCCCGAGGTGGTGAAGACGCACCT GCGGACATGATCATTCTGCCCGAGATGGTGGGCA GCATGGCCGGCGTCTACAACGGCAAGACCTTCAA CCAGGTGGAATCAAGCCTGAGATGATTGGCCA CTACCTAGGCGAGTTCTCCATCACCTACAAGCCCGTA AAGCATGGCCGGCCCG-3'.



**Fig. 11: Sensitivity of the assay:** RNA from the equivalent of a single cell infected with bRSV was analyzed for the presence of bRSV and ovine ribosomal S15 mRNA (housekeeping gene). From this recent result, we now feel confident that the collection of 10 to 20 cells by LCM for the purposes of IF-IHC-LCM-RT-PCR is the optimal number—not only to save time, but also to avoid collecting cellular debris on unintended portions of the cell-collection surfaces of the HS LCM caps resulting from picking up and setting down the caps on tissue samples multiple times in effort to collect 100, 500 or 1000 cells or more. We have shown this 'debris' to inhibit real-time RT-PCR reactions. The sensitivity of this assay will now allow us to avoid having to pick up the LCM caps multiple times.

We designed real-time primers and probe to this ovRPS15 sequence using computer software from ABI (Prism Primer Express v. 2.0). Our sequences for the forward and reverse primers and fluorogenic probe for ovRPS15 are: 5'-CGAGATGGTGGGCAGCAT-3', 5'-GCTTGATTTCACCTGGTGA-3', and 5'-VIC-CCGGCGTCTACAACGGCAAGACC-TAMRA-3' (where VIC™ is a proprietary fluorescent reporter dye known only by its 3-letter acronym; a trademark of Applied Biosystems Corporation). We also designed sequence-specific oligonucleotide primers and fluorescent probes for our other real-time targets of interest (SBD-1, SP-A, SP-D, ovine MCP-1 $\alpha$  and TLR4) using Primer Express v.2.0 in conjunction with the search tool BLAST (Basic Local Alignment Search Tool, National Center for Biotechnology Information). Resultant probe sequences are checked for specificity by comparing them for similarity to all other available sequences in the database. Only unique sequences and/or sequences that spanned genomic introns are used for our SP-A, SP-D, SBD-1, MCP-1 $\alpha$  and TLR4 primer and probe designs. We identified ovine TLR4 real-time primers and probe by trial and error using the bovine sequence for TLR4 (accession number NM 174198) as a general ruminant



TLR4 template. The second real-time primer-probe set we designed for ovine TLR4 (and tested on ovine lung total cDNA) worked beautifully. The forward and reverse primers and fluorogenic probe for "ovine" TLR4 is as follows:

5'-GAGAAGACTCAGAAAAGCCTTGCT-3', 5'-GCGGGTTGGTTTCTGCAT-3' and 5'-6FAM-TAAACCCAGAGTCCAGAAGGAACAGCA-3', respectively. The primer and probe sequences for our other targets are: for SP-A, 5'-TGACCCTTATGCTCCTCTGGAT-3', 5'-GGGCTTCCAAGACAACTTCCT-3', and 5'-6FAM-TGGCTTCTGGCCTCGAGTGC-G-TAMRA-3'; for SP-D, 5'-ACGTTCTGCAGCTGAGAAT-3', 5'-TCGGTCATGCTCAGGAAAGC-3', and 5'-6FAM-TTGACTCAGCTGGCCACAGCCAGAACATA-TAMRA-3'; for SBD-1, 5'-CCATAGGAATAAAGGCGTCTGTGT-3', 5'-CGCGACAGGTGCCAATCT-3', and 5'-6FAM-CCGAGCAGGTGCCCTAGACACATGA-TAMRA-3' and for ovine MCP-1 $\alpha$  (the sequence used for ovine MCP-1 $\alpha$  primer and probe design: 5'-GAGAGGGGCCAATCCAGAGGCCAACAGCTCCACGCTGAAGCTTGAATCCTCTCGCTGCAACATGAAGTTCTCCGCTGCTCTCCTCTGCCTGCTACTCACAGTAGCTGCCTCAGCACCGAGGTGCTCGCTCAGCCAGATGCAATTAATCCCAAATTGCCTGCTGCTATAAATTCAATAAGAAGATCCCCATACAGAGGCTGACAACTACAGAAGAGTCACCACCAGCAAGTGTCCAAAGAAGCTGTGATTTTCAAGACCATCCTGGGCAAGAGTTTTGTGCAGACCCCAACCTGAAATGGGTCCAGGACGCCATAAACCATCTCAACAAGAAAAACCAAACTCCGAAGCCTTGA-3' was provided in a recent publication (5)):

5'-GCTGTGATTTTCAAGACCATCCT-3', 5'-GGCGTCTGGACCCATTT-3', and 5'-6FAM-AAAGAGTTTTGTGCAGACCCCAACC-TAMRA-3'; (where 6FAM is 6-carboxyfluorescein, the fluorescent reporter dye, and TAMRA is 6-carboxytetra-methylrhodamine, the fluorescent quencher dye). We determined our optimal real-time concentrations for target and endogenous reference forward and reverse primers using the standard grid testing method as suggested by ABI (see "Additional Details Regarding Optimizing Real-Time Primers and Fluorogenic Probes Before their use with Experimental Samples: Optimization and validation tests performed on cDNA" section below for more

details). Our optimal concentrations were: 300 and 300 nM for ovine SP-A, 300 and 300 nM for ovine SP-D, 300 and 900 nM for SBD-1 forward and reverse primers (6), 900 and 400 nM for ovine MCP-1 $\alpha$  and 1000 and 1000 nM both for ovine TLR4 and ovRPS15 forward and reverse primers, respectively. Similarly, optimal concentrations of fluorogenic probes are found to be 50 nM for SP-A, 100 nM for SP-D, 150 nM for SBD-1, 100 nM for TLR4, 100 nM for ovine MCP-1 $\alpha$  and 150 nM for ovRPS15. Each plate contained both target and endogenous references for all samples present on that plate, and a negative no-template control ("NTC"; nuclease-free water) for each target and endogenous reference. No reverse transcriptase controls or "NRC" (one-step reactions containing everything except reverse transcriptase enzyme to test for genomic DNA contamination) are run on each RNA sample in separate plates prior the actual sample plates. Duplicate replicates are run for each of these time-intensive LCM samples.

#### Preparation of cDNAs for preliminary target calibration (standard) curve runs

Using the GeneAmp 5700 software and EXCEL, relative quantities of each target are calculated from all real-time  $C_T$  values crossing a threshold of 0.1 using 5-point serial progressive 1:3 standard curves generated months beforehand specifically for each target (SP-A, SP-D, SBD-1, TLR4, MCP-1 $\alpha$  and ovRPS15) using cDNAs made from a mixture of 7 different sheep lung total cDNAs (bearing all real-time targets of interest) generated by reverse transcription with SuperScript III RT enzyme as follows: Total RNA is isolated from 0.3 grams of sheep lung tissue using our own optimized procedure (6). All total RNA isolates are assessed for quantity and purity by examining 1:50 dilutions of each by spectrophotometry at 260nm and 280nm, and DNase treatment is performed using the TURBO DNA-free kit from Ambion. DNase treatment mixtures are vortexed gently, then incubated in a 2400 thermocycler (Perkin Elmer/ABI) for 30 minutes at 37°C. 1  $\mu$ l DNase Inactivation Reagent per 10  $\mu$ l solution is added to each tube. The tubes are incubated for 2 minutes at room temperature with intermittent vortexing every 10 to 15 seconds, then centrifuged at 10,000  $\times$  g for 1.5 minutes to pellet the Inactivation Reagent. The upper transparent layer containing the RNA is transferred to a new tube (care is taken to avoid

~15-25% of the solution on the bottom of each tube – which is the pelleted Ambion DNase Inactivation Reagent polymer complex that can inhibit PCR reactions). Next, complementary deoxyribonucleic acid (cDNA) synthesis is performed. Reverse transcription master mix containing 3.38% nuclease-free water, 31.17 mM TRIS, 64.94 mM KCl, 5.71 mM MgCl<sub>2</sub>, 2.08 mM dNTP mix, 2.6 μM random hexamers and 0.0222 μg/μl TURBO DNase-treated RNA is heated for 5 minutes at 65°C then snap-cooled on ice for at least 1 minute. [Note: We made our own 10X reverse transcription buffer (300 mM TRIS:HCl, 625 mM KCl, pH 8.3) and used it in the master mix above. Additionally, our TURBO DNase-treated RNAs are all pre-diluted such that the addition of 36 μl to each final 100 μl reverse transcription reaction resulted in each reaction containing 2.1389 μg total RNA template; and two to four such 100 μl reactions are created from the same original reverse transcription master mix for all samples]. Samples are spun down, and RNase inhibitor (20 U/μl, ABI) and SuperScript III RT enzyme (200 U/μl, Invitrogen) are finally added to each cooled sample reverse transcription mixture (now 200 to 400 μl each). The final concentrations attained of each reverse transcription component are: 3.25% nuclease-free water, 30 mM TRIS, 62.5 mM KCl, 5.5 mM MgCl<sub>2</sub>, 2 mM dNTPs (0.5 mM each of dATP, dCTP, dTTP and dGTP), 2.5 μM random hexamers, 3.5 U/μl SuperScript III RT enzyme, 0.4 U/μl RNase inhibitor and 0.021389 μg/μl TURBO DNase-treated RNA. These reagents are vortexed gently, split into 100 μl amounts into nuclease-free 0.2 ml tubes (MidWest Scientific), and the tubes are placed into the GeneAmp 2400 thermocycler (which only accepts samples of 100 μl or less). Reverse transcription thermocycler conditions are: 5 minutes at 25°C, 45 minutes at 53°C, 15 minutes at 70°C, followed by a safety hold at 4°C.

Standard curves generated for each target had the following equations when plotted as log input cDNA vs Ct: for SP-A,  $y = -3.5491x + 31.0207$ ;  $R^2 = 0.9725$ , for SP-D,  $y = -2.8747x + 31.9853$ ;  $R^2 = 0.9525$ , for SBD-1,  $y = -4.5093x + 35.2325$ ;  $R^2 = 0.7713$ , for TLR4,  $y = -4.2945x + 33.7240$ ;  $R^2 = 0.8068$ , for MCP-1 $\alpha$ ,  $y = -3.7496x + 32.5020$ ;  $R^2 = 0.9138$ , and for ovRPS15,  $y = -3.8041x + 27.8233$ ;  $R^2 = 0.9881$ . It is important to note here, however, that running standards on all plates (from which to generate standard curves for each target on each plate) remains the most accurate

approach toward attaining reliable real-time quantitation data since standard and sample reactions for the same target on the same plate experience the same degree of amplification reaction efficiency (or, indeed, inefficiency).

### Normalization

For the LCM RNA samples (on which we used the optimal primer and probe conditions as established with cDNA in preliminary studies), each target signal mRNA level is normalized to its respective ovRPS15 signal by dividing the target input amount quantity value of RNA by the ovRPS15 input amount quantity value of RNA for each. This is followed by calculating the average and standard error of the mean for all replicates per each particular sample group. For cell culture studies, we have used 18S ribosomal RNA (but samples are diluted 1:1000 before use because of its hyper-abundance in comparison to mRNA targets) as a housekeeper (in addition to ovRPS15), in which case we use the geometric mean of the ribosomal protein S15 and 18S ribosomal RNA values to normalize our target signals. Other researchers have suggested using up to 10 different housekeeping genes for each experiment – which is too costly and impractical for most. We now avoid the use of  $\beta$ -actin,  $\beta$ -tubulin and GA3PDH as housekeeping genes since their stability (and therefore usefulness) has come under extensive fire recently, and over the past few years.

### Additional details regarding optimizing real-time primers and fluorogenic probes before their use with experimental samples

#### Optimization and validation tests performed on cDNA

Weeks and months prior to final sample RNA analyses by one-step fluorogenic real-time RT-PCR, each primer-probe set (with the exception of the ABI pre-optimized 18S ribosomal RNA primer-probe set) first had to be evaluated with cDNA for optimal primer and probe concentrations to ensure that maximal real-time fluorogenic PCR kinetics is obtained in each case (see Appendix A-E). These optimization and validation experiments are performed on cDNA exactly as suggested by ABI in order to find the correct

concentrations of primers and probes to use for each target, as well as the optimal useful dilution of cDNA template (found to be 1:5 for our purposes) to use that would allow each PCR to proceed with optimal efficiency. To accomplish this, two separate optimization plates are set up for each target; the second of which can only be set up after results from the first plate are obtained in each case. In other words, each target required one plate to optimize primer concentrations and another plate to optimize probe concentration. The first plate in each case is designed to enable the testing of various combinations and concentrations of the forward and reverse primers ranging from 50 nM to 900 nM while the probe amount remained fixed. In each well, the 50  $\mu$ l PCR mixtures contained a constant concentration of target probe (200 nM), 5  $\mu$ l of 1:5 diluted target-inclusive "Stock I cDNA" [\* footnote at end of section], 25  $\mu$ l of a commercial master mix (Cat No. 4304437, TaqMan Universal PCR Master Mix 2X, ABI, and nuclease-free water (which is used to adjust each final volume to 50  $\mu$ l after the desired primer and probe amounts are added). For all optimization trials, each sample is analyzed in quadruplicate, so each final sample preparation is 200  $\mu$ l in each case. We create and use master mixes whenever it is beneficial, logical and appropriate to do so throughout each real-time procedure. Each primer optimization plate is run in a GeneAmp 5700 real-time PCR machine (GeneAmp 5700 Sequence Detection System, ABI) using the following thermocycler conditions (which is used for all two-step fluorogenic real-time qPCR runs in this study; it is a specific thermocycler program created and optimized by ABI to be used specifically with cat. no. 4304437, TaqMan Universal PCR Master Mix 2X, and two or three other related ABI 2X Master Mix reagents): Hold for 2 minutes at 50°C (to activate the AmpErase UNG enzyme which destroys any dUTP-containing PCR carryover products left over in the PCR room from previous runs that may have drifted into your tubes during set-up), Hold for 10 minutes at 95°C (to "hot-start" activate the AmpliTaq Gold® DNA polymerase) and then 50 cycles of 15 seconds at 95°C followed by 1 minute at 60°C (to accomplish the annealing and extension phases of the PCR). Each 50-cycle run lasted 2 hours and 14 minutes, after which the GeneAmp 5700 sequence detection system software and Microsoft EXCEL are used in conjunction with one another to analyze the resultant fluorogenic PCR amplification data.

For the first optimization plate for each target, primer amounts that, upon analysis, provided the highest Rn value (see below) with the lowest primer concentration(s), are identified as the optimal concentrations for each primer pair for each of the respective targets of interest. To test each probe for optimal efficiency, a second plate is designed for each target to enable the testing of various concentrations of each probe ranging from 25 nM to 225 nM in the presence of optimal primer concentrations (as established by plate 1 in each case). For each probe, in each well, each 50  $\mu$ l PCR reaction contained the identified optimal concentrations of each primer for each target (which we found to be 300 nM and 300 nM for ovine SP-A, 300 nM and 300 nM for ovine SP-D, 300 nM and 900 nM for SBD-1, 900nM and 400 nM for ovine MCP-1 $\alpha$ , 1000 nM and 1000 nM for ovine/bovine TLR4, and 1000 nM and 1000 nM for ovine RPS15 forward and reverse primer concentrations, respectively), 5  $\mu$ l of 1:5-diluted **Stock I cDNA**, 25  $\mu$ l of the ABI commercial master mix (mentioned above) and nuclease-free water. Each separate primer-probe study in each of these optimization plates for each target is run in quadruplicate replicates in order to enhance the statistical significance of each sample observation (in all cases, quadruplicate sample well signals agreed to within >0.01%, lending high credence to the technique's stability, data not shown). This second (probe-optimization) plate is run in the GeneAmp 5700 sequence detection system using the same thermocycler program as used for the first (primer-optimization) test plate. For the second plates for each target, upon analysis of the resultant data, the combination of reactants which yielded the lowest C<sub>T</sub> (the threshold cycle or the C<sub>T</sub> value is the cycle at which a significant increase in  $\Delta$ Rn is first detected; where  $\Delta$ Rn is calculated from Rn<sup>+</sup> and Rn<sup>-</sup>, where Rn<sup>+</sup> is the Rn value of a reaction containing all components, Rn<sup>-</sup> is the Rn value of an unreacted sample (the baseline value or the value detected in the no-template control, NTC).  $\Delta$ Rn is thus the difference between Rn<sup>+</sup> and Rn<sup>-</sup> and it is an indicator of the magnitude of the signal generated by the PCR; see ABI literature for further information) with the lowest probe concentration is chosen as the optimal fluorogenic probe concentration in each case (which we found to be 50 nM, 100 nM, 150 nM, 100 nM, 100 nM and 150 nM for ovine SP-A, ovine SP-D, SBD-1, ovine MCP-1 $\alpha$ , ovine/bovine

TLR4 and ovine RPS15 probes, respectively). Next, as a validation test that the target and endogenous reference cDNA amplification reactions are all proceeding at equal efficiency across a spectrum of **Stock I cDNA** concentrations, a third plate (the validation test plate) is designed to enable the testing of various concentrations of cDNA ranging from full-strength **Stock I cDNA** to a 1:15,625 (i.e. attained by the seventh dilution in a series of progressive 1:5 dilutions) dilution of **Stock I cDNA**. In each well, constant (optimal) concentrations of forward and reverse primers and constant (optimal) concentrations of probe are used along with 25  $\mu$ l of ABI (Cat No. 4304437) master mix, 5  $\mu$ l of sequentially-diluted **Stock I cDNA** and nuclease-free water. Also included on this plate, are wells identical to the ones just described, but instead of ovine target primers and probe, they contained the endogenous reference (human 18S ribosomal RNA) forward and reverse primers and probe at their (ABI-established) optimal real-time concentrations (50 nM primers and 200 nM probe). This plate included all samples in triplicate and was run in the GeneAmp 5700 sequence detection system using the same universal thermocycler protocol as used for the preceding tests, and the data is subsequently analyzed.

### Real-time quantitation

An additional result of running validation plates is that they provide the researcher the characteristic standard curves (also referred to as 'calibration' or 'dilution' curves) for each target. Using standard curve y-intercepts and slopes in the following apparently unpublished equation: [real-time relative target quantity (or Qty) =  $10^{((Ct-b)/m)}$ ] (as indirectly alluded to in ABI's Technical Bulletin #2) (7), much in the same way the Pfaffl equation is utilized or approached (8), we calculate all normalized relative mRNA expressions for each target of interest and compare fold differences in normalized target expression between different treatment groups. Significant differences between groups are determined using the appropriate two-tailed homoscedastic t-test, or one-tailed t-test (as suggested by ABI) when appropriate (also see Appendix G). But again, it is important to note here, that running standards on all plates (from which to generate standard curves for each target on each plate) remains the most accurate approach toward attaining reliable real-time quantitation data since standard and sample

reactions for the same target on the same plate will both invariably experience the same degree of amplification reaction efficiency (or, indeed, inefficiency). Standard curves are prepared for each gene under study for RNA quantitation (absolute or relative quantitation), or for verification of the efficiencies of the reactions for comparative quantitation (using the  $\Delta\Delta C_T$  method which is only valid when target and reference standard curve slopes are within  $\pm 0.1$  units of one other; a seldom useful approach in practice). Standard curves are all constructed to extend above and below the expected abundance of each target. Sometimes (especially during target primer and probe validation runs), additional input quantities are included such as the minimum and maximum RNA amounts above and below the limit of detection to help differentiate between specific and non-specific products.

\*"Target-inclusive **Stock I cDNA**" refers to a pre-selected sheep cDNA from which it is shown by preliminary, non-optimized real-time test plates to express positively for all targets of interest to the study. The 1:5 dilution refers to the dilution of "full-strength" **Stock I cDNA** (or any other sample cDNA whose original concentration is that which is obtained directly from each RT reaction; which is theoretically 0.02  $\mu$ g/ $\mu$ l cDNA, assuming 100% efficiency of each reverse transcription as described here).

## CONCLUSIONS

We report here, a very fast, fail-safe way to isolate one-step real-time quantitative RT-PCR-quality RNA from LCM samples using the combined technologies of Invitrogen, Arcturus and Applied Biosystems. Our work has revealed that RNA extracted in this way is stable for weeks when stored at  $-80^\circ\text{C}$ , but, RNA isolated from slides older than 8 days (slides stored at  $-80^\circ\text{C}$ ) start to show weaker real-time signals from all targets investigated. Peeling the polymer tab off of the Arcturus HS LCM caps immediately post capture and extracting the RNA directly off the polymer tabs has proven to us to be the easiest and most efficient approach to isolate RNA from LCM samples. Minimizing the number of times one picks up the HS LCM caps during LCM is also crucial since cellular debris collected on the capture surface builds up the more one picks up and sets down the caps to find new collection areas. Subsequently, this debris also gets extracted during RNA isolation as well, and we have observed that RNA samples containing such debris



exhibit significantly poorer signals during one-step real-time RT-PCR (unpublished observations). Since we now have improved the sensitivity of the assay by employing this new approach to RNA isolation, the need to pick up the HS LCM caps multiple times in order to collect enough cells for ample real-time signal has been effectively eliminated. It is additionally important to note here that the maximum volume of [RNA isolate] sample per each 30  $\mu$ l reaction is 7.8  $\mu$ l. The RNA sample can not exceed 26% of the total reaction volume or the master mix components themselves begin to incur dilution (by sample) beyond their suggested optimal real-time concentrations. This is why we use 7.8  $\mu$ l-size samples per each 30  $\mu$ l reaction. In addition, eliminating EDTA addition after DNase I treatment (1  $\mu$ l of 25 mM is normally added to each sample before denaturing DNase I at 75°C as suggested in the SuperScript™ III CellsDirect cDNA Synthesis System protocol by Invitrogen) is key to maximizing the signal magnitude of our target amplifications. We found the ABI one-step master mix (TaqMan One-Step RT-PCR Master Mix Reagents Kit Cat. No. 4309169, ABI) to be susceptible to additional EDTA, whereas other master mixes (Invitrogen) may withstand higher amounts. Conceivably, additional Mg<sup>2+</sup> could be added to the ABI master mix to help restore its activity (if indeed EDTA addition during DNase I denaturation is needed in some cases), but we have not tried that approach presently. Our -RT (NRC) controls consistently show very little DNA contamination, see Figures 12-14 (Ginger Lucero, M.F.S., Invitrogen).

Further, addition of glycogen to our isolates appears to have no effect (positive or negative) on our ability to detect real-time signals (Fig. 13), so researchers may consider eliminating glycogen from this procedure without consequence.

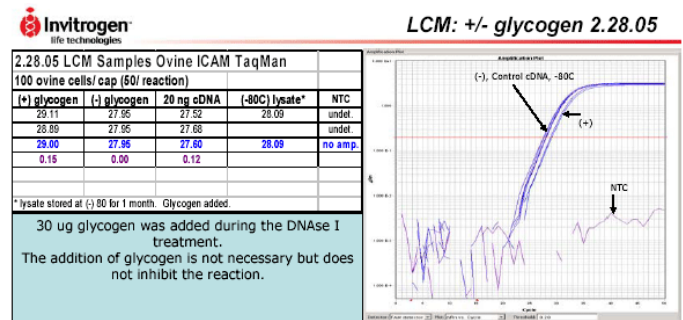


Fig. 13: Results from Invitrogen show results from 50 cell samples.

Finally, using the approach laid out in this communication, we can now consistently detect one-step fluorogenic real-time RT-PCR targets in single-cell amounts of RNA (Fig. 11). For an excellent comprehensive review on all possible aspects of quantitative real-time PCR (qPCR), see works by Stephen A. Bustin, (9), Mocellin *et al.*, (10), and for RNA amplification, see Wang *et al.*, (11). Our lab has published several papers which describe in depth the nature and quality of our qPCR approach. To check the quality of our real-time qPCR protocols in greater detail, please review our previous publications in their entirety (12-21).

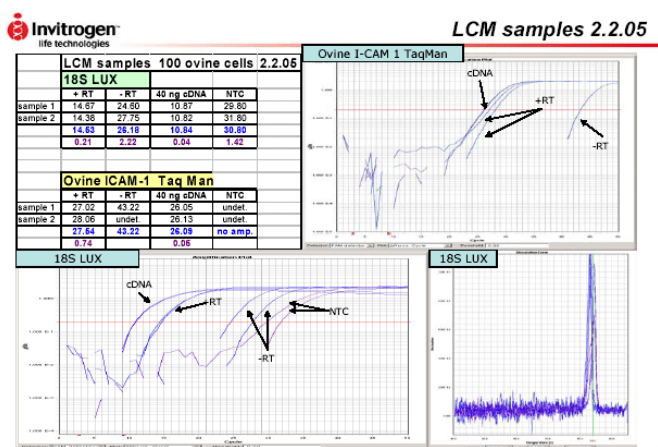


Fig. 12: Results from Invitrogen show that our typical -RT controls are valid.

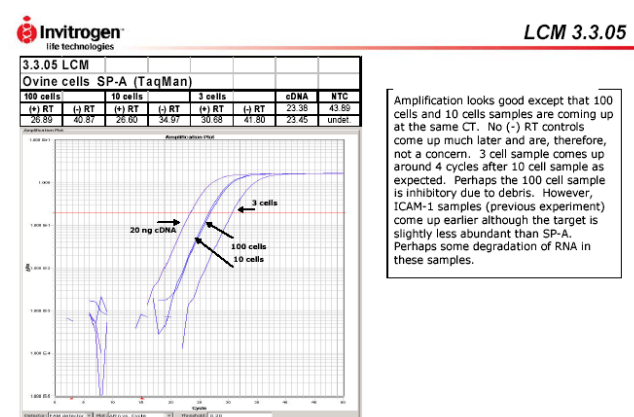


Fig. 14: Real-time results from Invitrogen using 3, 10 and 100 laser captured cells.

Gallup *et al.* - New quick method for isolating RNA from laser captured cells stained by immunofluorescent immunohistochemistry; RNA suitable for direct use in fluorogenic TaqMan one-step real-time RT-PCR

## SUPPLEMENTAL INFORMATION

EXCEL files for processing any part of these experiments are available from the corresponding author, Jack M. Gallup (eag@iastate.edu), upon request.

## ACKNOWLEDGMENTS

The authors wish to thank Travis and Lisa Engelhaupt for taking the photos in Figures 15, 19-22.

## REFERENCES

1. Webb T. Laser Capture Microdissection Comes Into Mainstream Use. *J Natl Cancer Inst* 2000; 92(21):1710-1711.
2. Invitrogen Life Technologies Instruction Manual. SuperScript III CellsDirect cDNA Synthesis System (for Catalog Nos. 18080-200 and 18080-300) Version A, 25-0731 14 May 2004; Version A; 1-5.
3. Use of glycogen or tRNA for reducing non-specific adherence of templates to Plastic. Applied Biosystems Incorporated 5700 User Manual 2000. Section 5, p.14.
4. Lee J, Duncan A, Warrick S. Techniques for Optimizing RT-PCR Reactions. *PharmaGenomics* 2003; pp. 54-55.
5. Dunphy J, Horvath A, Barcham G, Balic A, Bischof R, Meeusen E. Isolation, characterisation and expression of mRNAs encoding the ovine CC chemokines, monocyte chemoattractant protein (MCP)-1 $\alpha$  and -2. *Vet Immunol Immunopathol* 2001; 82(3-4):153-164.
6. Grubor B, Gallup JM, Meyerholz DK, Crouch EC, Evans RB, Brogden KA, Lehmkuhl HD, Ackermann MR. Enhanced surfactant protein and defensin mRNA levels and reduced viral replication during parainfluenza virus type 3 pneumonia in neonatal lambs. *Clin Diagn Lab Immunol* 2004; 11(3):599-607.
7. Applied Biosystems User Bulletin #2, ABI PRISM 7700 Sequence Detection System. SUBJECT: Relative Quantitation of Gene Expression: "Calculating the Input Amount." 2001. p. 8.
8. Pfaffl MW. A new mathematical model for relative quantification in real-time RT-PCR. *Nucleic Acids Res* 2001; 29(9):e45.
9. Bustin SA. A-Z of Quantitative PCR. Bustin SA, editor. (IUL Biotechnology, No. 5), 1st ed. International University Line; August 2004. 882 pages.
10. Mocellin S, Rossi CR, Pilati P, Nitti D, Marincola FM. Quantitative real-time PCR: a powerful ally in cancer research. *Trends Mol Med* 2003; 9(5):189-195.
11. Wang E, Miller LD, Ohnmacht GA, Liu ET, Marincola FM. High-fidelity mRNA amplification for gene profiling. *Nat Biotechnol* 2000; 18(4):457-459.
12. Gallup JM, Grubor B, Barua AB, Mohammadi G, Brogden KA, Olson JA, Mark R, Ackermann MR. Repeated intravenous doses of all-trans-retinoyl  $\beta$ -D-glucuronide is not effective in the treatment of bacterial bronchopneumonia in lambs but is devoid of gross and acute toxicity. *Med Sci Monit* 2002; 8(9):BR345-BR353.
13. Caverly JM, Diamond G, Gallup JM, Brogden KA, Dixon RAF, Ackermann MR. Coordinated Expression of Tracheal Antimicrobial Peptide and Inflammatory Response Elements in the Lungs of Neonatal Calves and with Acute Bacterial Pneumonia. *Inf Immun* 2003; 71(5):2950-2955.
14. Opriessnig T, Yu S, Gallup JM, Evans RB, Fenaux M, Pallares FJ, Thacker EL, Brockus CW, Ackermann MR, Thomas P, Meng XJ, Halbur PG. Effect of Vaccination with selective Bacterins on conventional Pigs infected with Type 2 Porcine Circovirus. *Vet Pathol* 2003; 40(6):521-529.
15. Opriessnig T, Fenaux M, Yu S, Evans RB, Cavanaugh D, Gallup JM, Ackermann MR, Pallares FJ, Thacker EL, Lager KM, Meng XJ, Halbur PG. Effect of Porcine Parvovirus Vaccination on the Development of PMWS in Segregated Early Weaned Pigs Coinfected with Type 2 Porcine Circovirus and Porcine Parvovirus. *Veterinary Microbiology* 2004; 98(3-4):209-220.
16. Meyerholz DK, Gallup JM, Grubor BM, Evans RB, Tack BF, McCray Jr. PB, Ackermann MR. Developmental expression and distribution of sheep b-defensin-2. *Dev Comp Immun* 2004; 28:171-178.
17. Grubor BM, Gallup JM, Meyerholz DK, Crouch EC, Evans RB, Brogden KA, Lehmkuhl HD, Ackermann MR. Enhanced Surfactant Protein and Defensin mRNA Levels and Reduced Viral Replication during Parainfluenza Virus Type 3 Pneumonia in Neonatal Lambs. *CDLI* 2004; 11(3):599-607.

Gallup et al. - New quick method for isolating RNA from laser captured cells stained by immunofluorescent immunohistochemistry; RNA suitable for direct use in fluorogenic TaqMan one-step real-time RT-PCR

18. Ackermann MR, Gallup JM, Zabner J, Evans RB, Brockus CW, Meyerholz DK, Grubor B, Brogden KA. Differential expression of sheep beta-defensin-1 and -2 and interleukin 8 during acute Mannheimia haemolytica pneumonia. *Microbial Pathogenesis* 2004; 37:21-27.
19. Grubor B, Gallup JM, Ramírez-Romero R, Bailey TB, Crouch EC, Brogden KA, Ackermann MR. Surfactant Protein D expression in normal and pneumonic ovine lung. *Vet Immunology & Immunopathology* 2004; 101:235-242.
20. Meyerholz DK, Grubor B, Fach SJ, Sacco RE, Lehmkuhl HD, Gallup JM, Ackermann MR. Reduced Clearance of Respiratory Syncytial Virus in a Preterm Lamb Model. *Microbes & Infection* 2004; 6(14):1312-1319.
21. Meyerholz DK, Grubor B, Gallup JM, Lehmkuhl HD, Anderson RD, Lazic T, Ackermann MR. Adenovirus-Mediated Gene Therapy Enhances Parainfluenza Virus 3 Infection in Neonatal Lambs. *J Clin Micro* 2004; 42(10):4780-4787.
22. Broackes-Carter F, Mouchel N, Gill D, Hyde S, Bassett J, Harris A. Quantitative CFTR transcript analysis by TaqMan. Temporal regulation of CFTR expression during ovine lung development: implications for CF gene therapy. *Hum Mol Genet* 2002; 11:125-131.
23. Swillens S, Goffard J-C, Marechal Y, de Kerchove d'Exaerde A, Housni EH. Instant evaluation of the absolute initial number of cDNA copies from a single real-time PCR curve. *Nuc Acids Res* 2004; 32(6):e53.
24. Peirson SN, Butler JN, Foster RG. Experimental validation of novel and conventional approaches to quantitative real-time PCR data analysis. *Nuc Acids Res* 2003; 31(14):e73.

## APPENDICES AND ADDITIONAL FIGURES

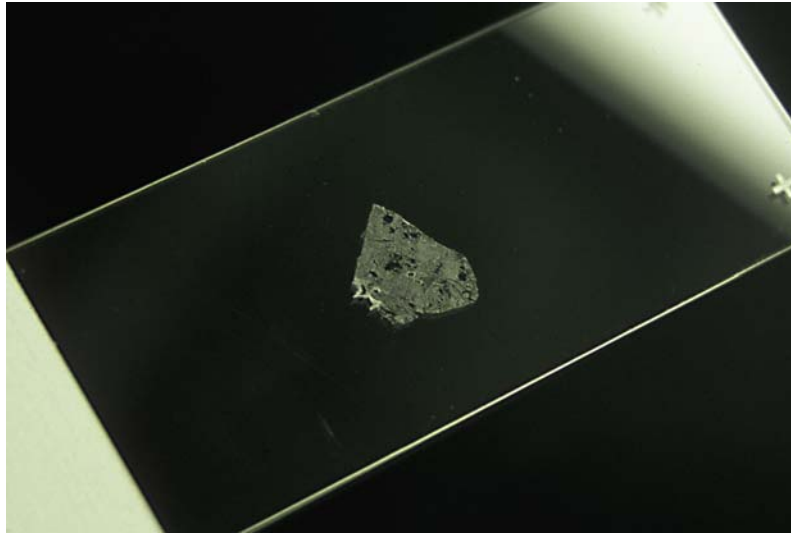


Fig 15: Typical section used for LCM, a 6  $\mu\text{m}$  section of sheep lung is shown here.



SLIDES ARE SUBJECTED TO EACH SOLUTION SHOWN ABOVE FOR 30 SECONDS

**Fig. 16:** To process and use tissues: we first fill a plastic cryo-mold half way with OCT, then we freeze the OCT partially (just the edges), place the tissue in center, cover tissue with OCT, freeze until opaque (this is most quickly performed in a dry-ice/ethanol bath, but we have successfully performed this on dry-ice alone as well). We cut sections on a cryostat (after cleaning cryostat with ethanol), and then we store the resulting slides @  $-80^{\circ}\text{C}$  (and never let them thaw). Upon use, we take slides from  $-80^{\circ}\text{C}$  fridge and place them either directly into 95% ethanol (with no PBS or water exposure at all), or, if pursuing IF-IHC before LCM, slides are placed directly into cold nuclease-free PBS + 0.1% Tween 20.

Gallup *et al.* - New quick method for isolating RNA from laser captured cells stained by immunofluorescent immunohistochemistry; RNA suitable for direct use in fluorogenic TaqMan one-step real-time RT-PCR



**RNA isolation from Laser-captured cells for One-Step Q-RT-PCR**

10 samples (1 extra sample amount already figured in)

Resuspension Buffer: 90.9 uL (part# 55636, Invitrogen kit 11739-010) *Store at 4°C once prepared*

Lysis enhancer: 10.0 uL (part# 55627, Invitrogen kit 11739-010)

new RNaseOUT: 9.1 uL (40 U/uL) (part# 55801 from Invitrogen kit 18080-200)

**110.00 uL Total Lysis Buffer prepared**

For all 10 samples

HS LCM Caps from ARCTURUS Cat. No. LCM-0204

# Cells (laser shots) per HS cap: ~20

Desired final sample volumes: 36 uL

0.5 mL tubes: ABI Cat. No. N801-0511

Laser-captured cells on an HS LCM cap polymer tab removed from the cap

Ginger Lucero suggestion on March 23rd, 2005: peel tabs off and incubate at 50°C for 10 min, then 75°C for 5 min ...

**Peel cell tabs off caps and place in Lysis buffer 10 uL Lysis Buffer used/sample**

(After laser capture, remove polymer tabs from HS Caps with nuclease-free forceps and put them in Lysis Buffer in the bottom of ABI 0.5 mL tubes and incubate tubes at 50°C for 10 min, spin samples down, then pipette the liquid samples (leaving tabs behind) into new tubes, then incubate these sample solutions at 75°C for 5 minutes)

**DNase Treatment of Extracts:**

Spin down extracts after the 75°C incubation, then to each add:

Ginger Lucero suggestions on March 3rd, 2005: use 1.6 uL 10X DNase I Buffer and 5 uL DNase I per typical sample

1.6 uL of 10X DNase I buffer from Cells Direct kit (part# 55805, Invitrogen kit 18080-200)

and 5.0 uL of DNase I (amplification grade 1 U/uL) from CellsDirect kit (part# 55803, Invitrogen kit 18080-200)

Mix gently by vortexing, microfuge briefly to collect contents, incubate at room temperature for no longer than 5 minutes,

Vortex gently, microfuge briefly, incubate @ 75°C for 15 min, in a tube rack, then put on ice for the duration of the protocol if running real-time plates right away -- to keep transcripts linear,

Mix 198.2 uL nuclease-free H<sub>2</sub>O + 15.2 uL 20 ug/uL glycogen solution, and

add: 19.4 uL of this mix to each sample, vortex and spin down,

This is Ultrapure Glycogen from Invitrogen, Cat. No. 10514-010

**1.4274 ug/uL glycogen sol'n prepared**

Then: \*transfer each sample to new 0.2 mL tubes to store @ -80°C.

\*[While transferring, check final volumes of each sample to be sure desired final volume(s) have been attained; q.s. w/nuc-free H<sub>2</sub>O]

When using -80°C RNA samples, these 0.2 mL tubes are incubated in a thermocycler at 65°C for 5 minutes then put on ice for 1 minute just prior to being used as templates for One-Step real-time RT-PCR

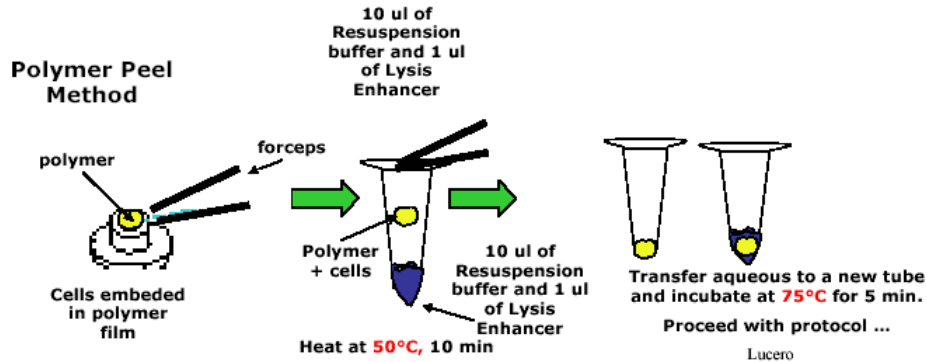
Each sample is now: 36 uL containing: 0.7692 ug/uL glycogen

and: ~0.56 cells worth of RNA/uL from 20 cells or shots/cap sample ...

thus: 7.80 uL contains about: 4.33 cells worth of RNA; the suggested minimum RNA/well is RNA from 10-20 cells

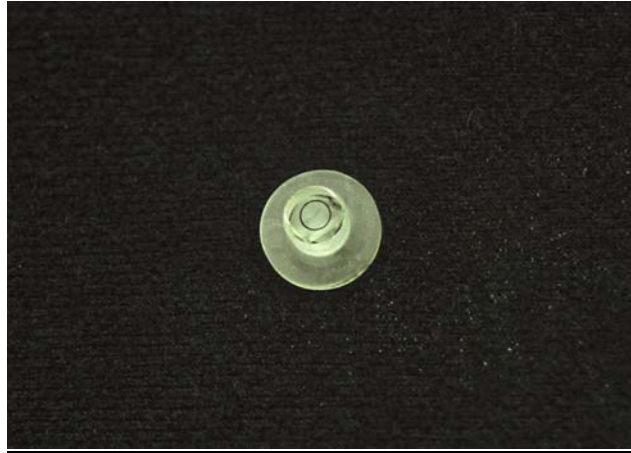
7.8 uL of each RNA sample ends up in a final reaction volume of: 30 uL for real-time LCM-RT-PCR
~10 pg RNA/cell thus 7.80 uL RNA sample should contain roughly: 43 pg RNA/each real-time rxn well
Targets to be investigated: SP-AD, SBD-1, TLR4 MCP-1a, ovRPS15 ~1.44 pg/uL in each reaction well

THIS FILE REPRESENTS ALL THE OPTIMIZED PARAMETERS FOR LCM, AND THE RNA ISOLATION WE USE  
**Fig. 17: EXCEL file layout detailing RNA extraction/isolation procedure where polymer tabs with laser captured cells are first peeled off the HS LCM caps and then processed.**

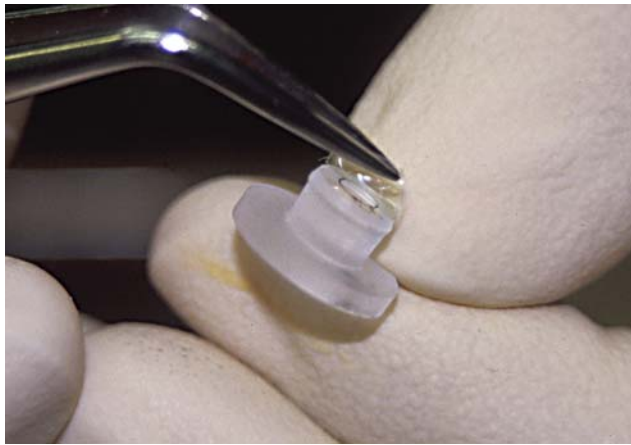


**Fig. 18: EXCEL file layout detailing RNA extraction/isolation procedure where polymer tabs with laser captured cells are first peeled off the HS LCM caps and then processed.**

Gallup *et al.* - New quick method for isolating RNA from laser captured cells stained by immunofluorescent immunohistochemistry; RNA suitable for direct use in fluorogenic TaqMan one-step real-time RT-PCR



**Fig. 19:** An Arcturus HS LCM Cap.



**Fig. 20:** The removable polymer tab (onto which cells are laser-captured) being lifted by forceps.



**Fig. 21:** The removed polymer tab; if desired, one can additionally trim the tabs closer to the central region where the captured cells are using a nuclease-free pair of scissors.



**Fig. 22: The ABI 0.5 mL GeneAmp tube containing 10  $\mu$ L Lysis Buffer.**

## Appendix A

All primers and probes were optimized and validated strictly according to ABI procedural guidelines using all-target-inclusive cDNA prepared from Turbo DNase-treated total RNA isolated (using Trizol) from whole sheep lung homogenates. Our optimization approach is a very common/well-known procedure whereby one studies combinations of primer concentrations in the range of 50 nM-900 nM while keeping the probe at a constant 200 nM, then the probe is challenged from 25 nM to 225 nM at the optimal primer concentrations established above. All samples are performed in quadruplicate during these procedures. After optimization, the validation runs are performed on seven serial 1:5 dilutions of the same cDNA (starting with full-strength cDNA being assigned the relative strength of "1") using the optimal primer and probe concentrations established during optimization. The highest R<sub>n</sub> (normalized reporter fluorescence) value with the lowest primer concentrations is the indicator by which one selects the appropriate optimal primer concentrations in each case. The higher the R<sub>n</sub>, the higher the magnitude of real-time fluorescent signal. Once the R<sub>n</sub> value no longer increases with increasing primer concentrations, one has attained the useful optimal primer concentrations. Ct values are inspected during probe optimizations, and the lowest Ct (threshold cycle) value with the lowest probe concentration is the criteria by which one chooses the optimal probe concentration. Once the Ct value no longer decreases with increasing probe concentration, one has attained the useful optimal probe concentration. Little known is the fact that all real-time target signals can be found with greater than 50% amplification efficiency simply using 1000 nM primers and 150 nM probe (unpublished observations from our lab).

Appendix B

Processing the Rn Values from the 6700 (looking for highest Rn value with lowest primer concentration)

Process Rns

**TEST #1 RESULTS (Primer Optimization)**

Don't Use Not in use      SP-A For and Rev Primer (tested)      Use These Numbers Quadruplicates

ENTER EACH Rn VALUE	Rank	Tube	Avg	nM (for.)	nM (rev.)	Rank	Tube	Avg								
0.01 0.00 0.01 0.01	9	1	0.01	60	50	9	1	0.01								
0.68 0.69 0.67	8	2	0.68	300	50	8	2	0.68								
0.77 0.76 0.77	7	3	0.70	900	50	7	3	0.77								
1.38 1.37 1.39 1.39	6	4	0.77	60	300	6	4	1.38								
1.44 1.41 1.43 1.43	3	5	1.38	300	300	3	5	1.43								
1.22 1.24 1.23 1.22	1	6	1.41	900	300	1	6	1.43								
1.40 1.39 1.41 1.41	4	7	1.36	60	300	4	7	1.23								
1.35 1.36 1.36 1.37	5	8	1.23	300	900	5	8	1.23								
1.42 1.41 1.41 1.41	2	9	1.40	900	900	2	9	1.40								
<table border="1" style="margin: auto;"> <tr> <td colspan="2" style="text-align: center;">Over-Ride result?</td> </tr> <tr> <td style="text-align: center;">0</td> <td style="text-align: center;">(1 or 0)</td> </tr> <tr> <td colspan="2" style="text-align: center;">preferred: 0      0</td> </tr> <tr> <td style="text-align: center;">forward</td> <td style="text-align: center;">reverse</td> </tr> </table>									Over-Ride result?		0	(1 or 0)	preferred: 0      0		forward	reverse
Over-Ride result?																
0	(1 or 0)															
preferred: 0      0																
forward	reverse															

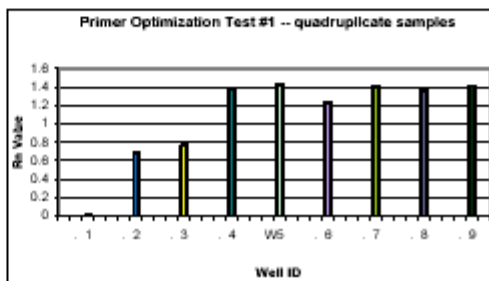
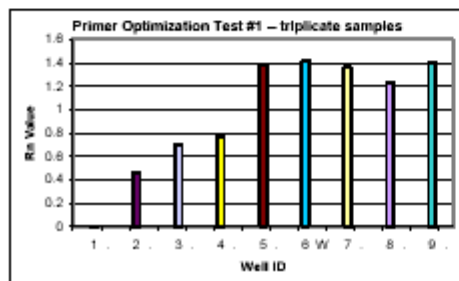


Fig. 23: Typical EXCEL file set-up for primer-probe optimizations and validations.

Gallup *et al.* - New quick method for isolating RNA from laser captured cells stained by immunofluorescent immunohistochemistry; RNA suitable for direct use in fluorogenic TaqMan one-step real-time RT-PCR



Appendix C

Process Cts	For Triplicates				TEST #2 RESULTS (Probe Optimization)		For Quadruplets		
	Rank	Tube	Avg Cts	nM	SP-A Target Probe [tested]	nM	Rank	Tube	Avg Cts
28.3									
28.2	1	1	28.20	25		25	1	1	28.13
28.1	.	.	.				.	.	
27.9									
25.7	6	2	26.40	50		50	9	2	25.63
25.6	.	.	.				WINNER!	WINNER!	
25.33									
25.9	9	3	25.78	75		75	6	3	26.32
26.1	WINNER!	WINNER!					.	.	
26.32									
26.34	7	4	26.39	100		100	2	4	27.08
26.5	.	.	.				.	.	
26.9									
26.99	3	5	27.04	125		125	3	5	26.79
27.22	.	.	.				.	.	
27.21									
27.3	4	6	26.98	150		150	5	6	26.56
26.44	.	.	.				.	.	
27.18									
26.23	2	7	27.17	175		175	8	7	26.24
28.11	.	.	.				.	.	
26.23									
26.25	8	8	26.05	200		200	7	8	26.26
25.66	.	.	.				.	.	
27.54									
26.66	5	9	26.46	225		225	4	9	26.65
25.19	.	.	.				.	.	
25.55									
25.3									
26.22									
27.3									
26.2									
26.8									
26.7									
26.4									
26.7									

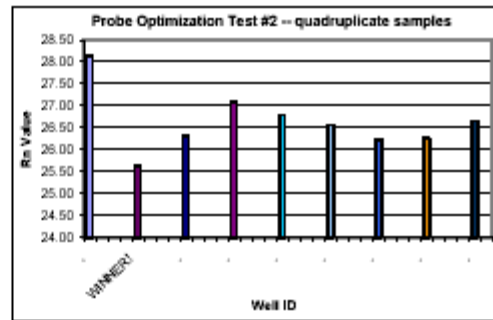
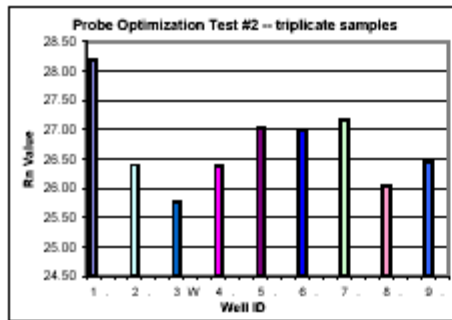
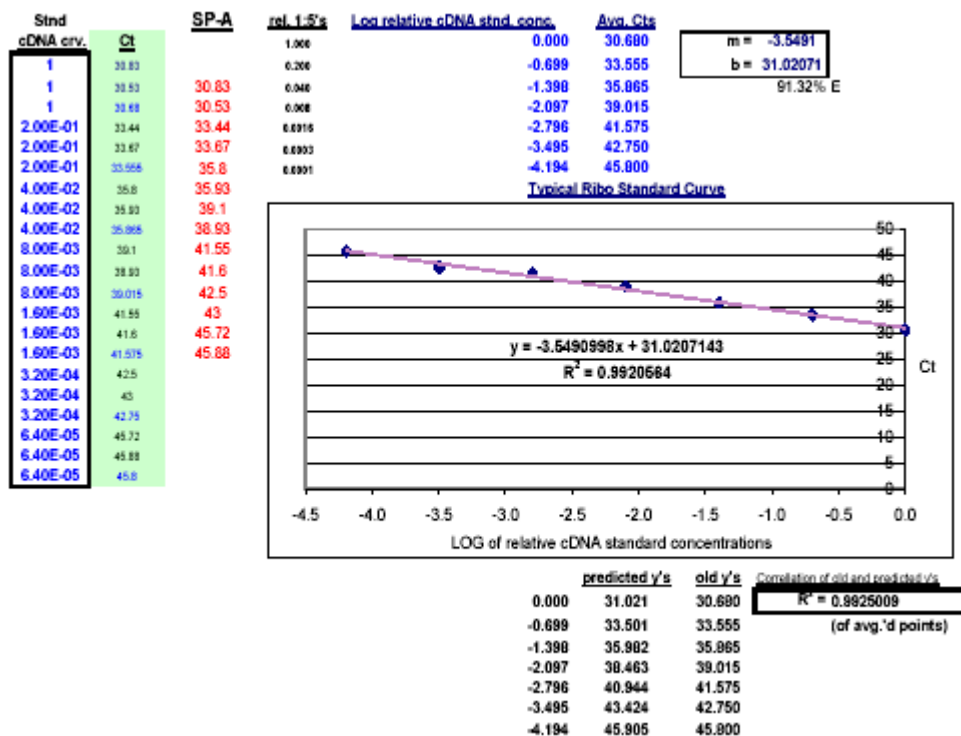


Fig. 24: Real-Time probe optimization test following primer optimization.

Gallup *et al.* - New quick method for isolating RNA from laser captured cells stained by immunofluorescent immunohistochemistry; RNA suitable for direct use in fluorogenic TaqMan one-step real-time RT-PCR

Appendix D



**Fig. 25: Typical Validation run result for testing optimal primer and probe optimizations (note – these validation curves additionally serve as target standard curves as well).**

Appendix E

Our “validation” tests are never performed on RNA – only on cDNA, and for obvious reasons: it is not valid to optimize real-time PCR using RNA since the RT step in a One-Step procedure is prone to variable degrees of efficiency (or, one should assume it to be; recent seminars on real-time qPCR have stressed this), and the reverse primer is used up to an unknown extent during 1<sup>st</sup>-strand synthesis. For validation, Turbo-DNase-treated total RNAs are first converted to total cDNAs (using SuperScript III RT enzyme, Invitrogen) in a tightly controlled RT reaction using 2 ug RNA per each 100 uL RT reaction. To assess concentration of each RNA isolate before DNase treatment, spectrophotometer readings of 1:50 dilutions of each are taken at 260 nm, 280 nm and 230 nm to check for: RNA concentration (260 nm), RNA purity (260/280; our RNA ratios are typically >1.92), and GIT, EDTA and/or TRIS contamination (230 nm; 260/230 ratios are acceptable if >2.0 here; ours are consistently >2.0).

Appendix F

We no longer use the ABI primer-probe set for 18S ribosomal RNA for assessing RIBO 18S as a housekeeping gene because of its faulty design (22). Our newly-designed set for RIBO 18S will help us establish a consistent RIBO 18S signal in our LCM samples we believe. In addition, we also use ovine RPS15 as a second housekeeper.

Appendix G

We haven’t had the need to generate dose-dependent line graphs for our qPCR studies. Our mathematical approach already takes into account the Pfaffl approach, and is aware of the theoretical ramifications of equations offered by Swillens *et al.* and Foster *et al.*, (23, 24). The typical EXCEL spreadsheet we’ve designed for calculating absolute or relative real-time target quantities greets the strongest principal approach in qPCR, which is to always run calibration

Gallup *et al.* - New quick method for isolating RNA from laser captured cells stained by immunofluorescent immunohistochemistry; RNA suitable for direct use in fluorogenic TaqMan one-step real-time RT-PCR

curves for all targets multiple times to prove the consistency of the efficiency of amplification for each target, and, always include a standard curve for each target on every plate (very rarely does one see two different target amplification reactions exhibit identical efficiencies!). Finally, no template controls ("NTC") and no reverse transcriptase controls ("NRC") are run for all samples as well. No amplification controls ("NAC"), which contain no Taq polymerase enzyme, are run on separate plates by themselves for each RNA isolate.

$Qty = 10^{((C_T - b)/m)}$

What is your no expression  $C_T$ ? **42**

$[10^{(-1/slope)}]^{-1}$

3-23-05/jmg

SP-A		91.32% Efficiency			
serial 1:6	-3.5491	m	Qty	Qty	Qty
std curve	31.02071	b	normalised to	normalised to	normalised to
Name	$C_T$	Qty	S15	18S	GeoMn.S15&18S
1	38.23	0.00930463	1.2060	12.3613	3.8611
1	38.5	0.007809505	1.0122	10.3750	3.2406
2	36.22	0.034279925	95.6043	374.6072	189.2460
2	36.1	0.037055379	103.3449	404.9371	204.5682
3	30.3	1.596130452	48.1048	1105812.1470	7293.4787
3	30.5	1.401898879	42.2509	971245.5490	6405.9332
4	28.4	5.475393965	15931.4148	344073.0500	74037.6287
4	28.11	6.608855087	19229.3764	415299.6007	89364.1558
5	39.34	0.004528389	0.5869	25389.9614	122.0757
5	38.9	0.00602447	0.7809	33778.2491	162.4068
6	37.56	0.014370748	41.8137	420.3075	132.5692
6	37.23	0.017801687	51.7964	520.6531	164.2193
7	38.22	0.009365193	27.2493	5604.3724	390.7881
7	38.12	0.009992931	29.0758	5980.0270	416.9822

**Fig. 26: Our typical relative-quantitative real-time qPCR EXCEL worksheet based on the strongest qPCR mathematical principals.** These values are then used to perform one or two-tailed t-tests on - in accordance with the statistical guidelines as currently suggested by ABI (3).