

STUDY PROTOCOL

Open Access



Effect of acupuncture for methadone maintenance treatment patients: study protocol of a randomized clinical trial

Hao Wen¹, Shichao Xu², Jingchun Zeng³, Shuqi Ge⁴, Yuan Liao⁴, Chunzhi Tang⁴, Songhua Xiao^{1*} and Liming Lu^{4*}

Abstract

Background: Opioid dependence is an increasing public health problem all over the world. Patients with opioid dependence have to receive methadone maintenance therapy (MMT) as replacement therapy for years or even for their entire life. Acupuncture as a kind of therapy has been used to treat substance dependence for many years. Jin's three-needle acupuncture (JTN), a type of acupuncture technique, has been applied to treat various diseases for several decades. However, JTN as an acupuncture technique has not been used to treat patients receiving MMT. Therefore, we designed a randomized controlled trial to evaluate the efficacy and safety of acupuncture as adjunctive therapy for patients receiving MMT.

Methods/design: This study is a parallel-arm, randomized controlled trial that aims to evaluate the efficacy and safety of acupuncture as adjunctive therapy for patients receiving MMT. A total of 140 eligible participants who range in age from 18 to 60 years and fulfil the Diagnostic and Statistical Manual of Mental Disorders, 5th edition (DSM-V), for opiate dependence will be enrolled into this study. All eligible participants will be randomly assigned to the acupuncture group or routine group in a 1:1 allocation ratio. Participants who are enrolled in the acupuncture group will receive MMT and JTN treatment for 30 min per session. Meanwhile, those who are assigned to the routine arm will receive MMT only. All 18 sessions of JTN treatment will be delivered over 6 weeks (3 per week) and followed by a 4-week follow-up period. The primary outcome measure will be the visual analogue scale (VAS) for drug craving and the daily consumption of methadone (DCOM). Secondary outcome measures will include the urine test for opioid use, the 36-item Short Form Survey (SF-36), the Beck Anxiety Inventory (BAI), the Beck Depression Inventory II (BDI-II) and Pittsburgh sleep quality index (PSQI). VAS, DCOM, BAI, BDI-II and the urine test for opioid use will be evaluated at baseline, the second week, the fourth week, the sixth week and the tenth week. SF-36 and PSQI will be assessed at baseline, the fourth week, the sixth week and the tenth week.

Discussion: The results of this trial will provide evidence on the efficacy and safety of acupuncture as adjunctive therapy for patients receiving MMT.

Trial registration: Chinese Clinical Trial Registry [ChiCTR1900026357](https://www.chictr.org/ChiCTR1900026357). Registered on 2 October 2019.

Keywords: Opioid dependence, Jin's three-needle technique, Acupuncture, Methadone maintenance therapy

* Correspondence: xiaosh@mail.sysu.edu.cn; lulimingleon@126.com

¹Department of Neurology, Sun Yat-sen Memorial Hospital, Sun Yat-sen University, 107 Yanjiang West Road, Guangzhou 510120, People's Republic of China

⁴Medical College of Acu-Moxi and Rehabilitation, Guangzhou University of Chinese Medicine, Guangzhou, China

Full list of author information is available at the end of the article



© The Author(s). 2020 **Open Access** This article is licensed under a Creative Commons Attribution 4.0 International License, which permits use, sharing, adaptation, distribution and reproduction in any medium or format, as long as you give appropriate credit to the original author(s) and the source, provide a link to the Creative Commons licence, and indicate if changes were made. The images or other third party material in this article are included in the article's Creative Commons licence, unless indicated otherwise in a credit line to the material. If material is not included in the article's Creative Commons licence and your intended use is not permitted by statutory regulation or exceeds the permitted use, you will need to obtain permission directly from the copyright holder. To view a copy of this licence, visit <http://creativecommons.org/licenses/by/4.0/>. The Creative Commons Public Domain Dedication waiver (<http://creativecommons.org/publicdomain/zero/1.0/>) applies to the data made available in this article, unless otherwise stated in a credit line to the data.

Background

According to the World Drug Report 2018, approximately 31 million people are affected by opioid use disorders through the world, which cause the greatest burden of severe disease and drug-related deaths worldwide [1]. In China, there are approximately 2.5 million people using illicit drugs, of which opioids and methamphetamines represent the majority [2].

Opioid dependence is a chronic psychiatric disorder. Discontinuation of the drug abruptly induces specific physiological and psychological changes called withdrawal, which is a temporary stage opposing intoxication towards re-establishment of the patient's neuronal system. Withdrawal symptoms mainly include sweating, shaking and diarrhoea in the first few days, accompanied by dysphoria, depression, anxiety and insomnia, which may continue for several months [3, 4]. It is an unadaptable state associated with withdrawal symptoms and severe craving, which may lead to the high risk of relapse. The primary goal of treatment for opioid dependence usually focuses on achieving control of withdrawal symptoms and reducing cravings. Methadone has been used to treat withdrawal symptoms for several decades. Patients with opioid dependence have to receive MMT as replacement therapy for years or even their entire life. However, side effects of MMT still exist and have been reported to range widely, especially during the early weeks of methadone stabilization [5]. Patients often complain of insomnia and cravings during MMT, which contribute to the risk of relapse [6]. Therefore, it is necessary to seek a new treatment with efficacy and safety for patients receiving MMT.

Acupuncture has been applied to treat diseases in China for thousands of years, gaining popularity in Western countries as an alternative and complementary therapy [7]. In 1996, the World Health Organization accepted that acupuncture, as a kind of therapy, is appropriate for the treatment of drug use disorders [8]. Compared with drug treatment, acupuncture for opioid dependence has zero side effects and is convenient and inexpensive [9]. Acupuncture may inhibit the activation of specific brain regions related to drug craving, which support its potential as a therapy for drug craving [10]. Liang Yan reported that acupuncture may alleviate the depression and anxiety associated with heroin dependence [11]. Some basic studies have revealed that acupuncture might potentially reduce relapse through inhibiting attention bias to heroin [12], lowering complications of drug dependence [13] and modifying the morphine withdrawal syndrome [14]. To our knowledge, JTN, a type of acupuncture technique, has been applied to treat diseases for decades and has formed a school of acupuncture technique in South China. The concept of 'mind' means mental activities in traditional Chinese

medicine (TCM). JTN is able to treat mental diseases and help patients to regulate the mind [15]. JTN has been widely used to ameliorate depression and anxiety [16]. A previous study reported that JTN treatment may ameliorate insomnia [17]. We hypothesize that patients receiving JTN will have reductions in drug craving, require less methadone during MMT and have improvements in quality of life, sleep quality, depression and anxiety. Therefore, this study aims to evaluate the efficacy and safety of acupuncture as an adjunctive therapy for patients receiving MMT.

Methods

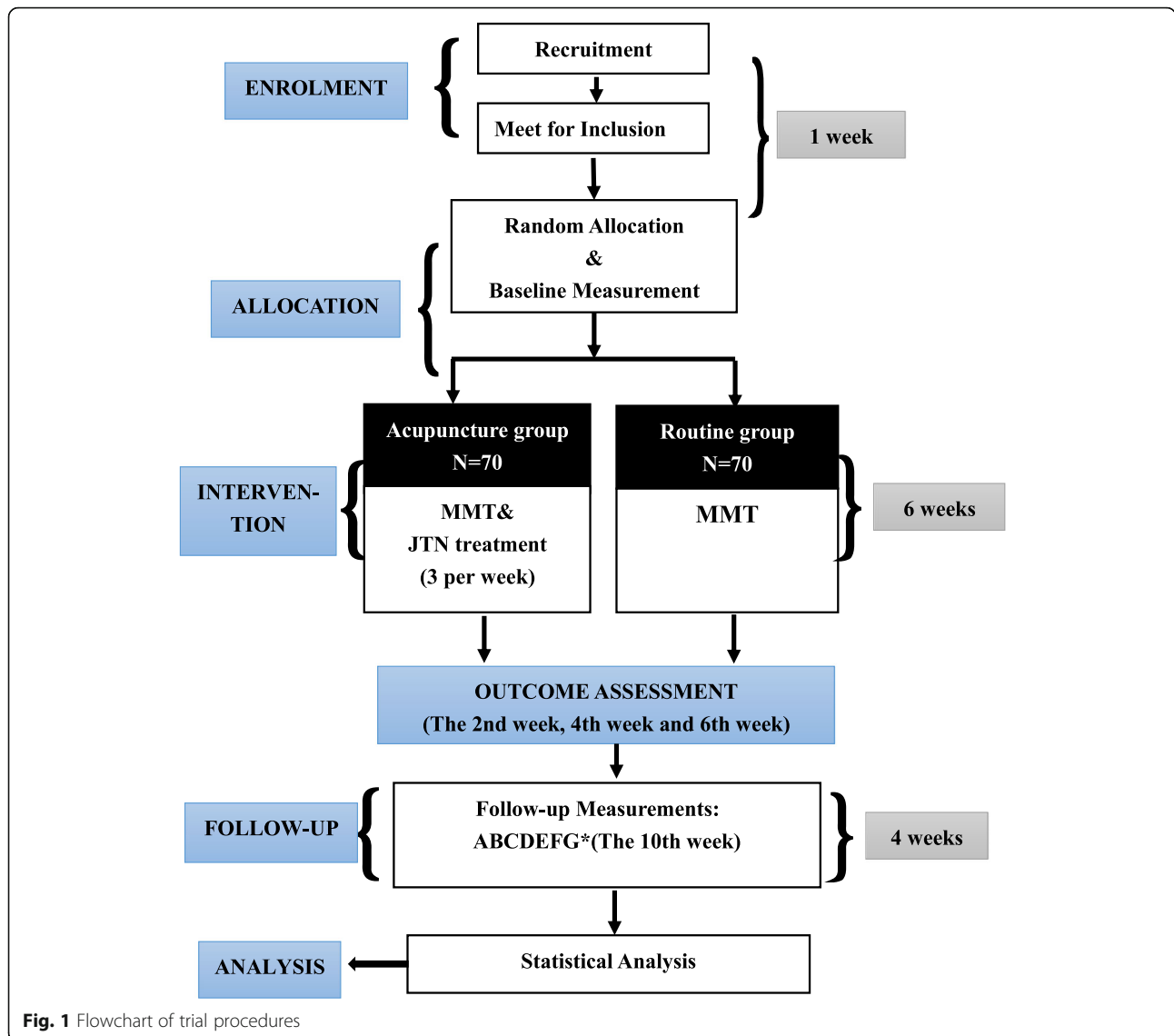
Study design

This is a parallel-arm, randomized controlled trial to evaluate the efficacy and safety of acupuncture as an adjunctive therapy for patients receiving MMT. All eligible individuals (140) will be randomly assigned to the acupuncture group ($n = 70$) or the routine group ($n = 70$) in a 1:1 ratio. This study protocol has been approved by the Ethics Committee of the First Affiliated Hospital of Guangzhou University of Chinese Medicine (No.Y-2019-241) and registered in the Chinese Clinical Trial Registry (ChiCTR1900026357). This study protocol conforms to the Standard Protocol Items: Recommendations for Interventional Trials (SPIRIT) guidelines (Additional file 1) [18] and the Standards for Reporting Interventions in Controlled Trials of Acupuncture (STRICTA) checklist (Additional file 2) [19]. Before randomization, all eligible participants will be asked to sign an informed consent. The flowchart of the study is shown in Fig. 1.

Study subjects

Subjects will be recruited through advertisements at the Affiliated Brain Hospital of Guangzhou Medical University. All eligible individuals will be strictly assessed by an acupuncturist based on the criteria described below. Subjects are eligible to include if they (1) are male or female aged 18–60 years; (2) fulfil the criteria for the diagnosis of opioid dependence on the basis of the Diagnostic and Statistical Manual of Mental Disorders, 5th edition (DSM-V) [20]; (3) receive MMT for more than 30 days; (4) do not receive any kind of acupuncture therapy during the previous 3 months; and (5) are able to sign informed consent.

Subjects will be excluded if they have one or more of the following criteria: (1) serious heart, liver, lung or kidney disease; (2) venereal disease or AIDS; (3) the presence of severe digestive disease and atrepsia; (4) major psychosis; (5) the receipt other treatment that may affect the efficacy evaluation of the present intervention; (6) an infection, inflammation, scar or injury close to the site of the selected acupoints; or (7) are pregnant or planning to become pregnant.



Randomization, allocation and concealment

Eligible patients will be randomly assigned in an equal ratio to the acupuncture group or the routine group via a central randomization system. The randomization sequence will be generated in a block size of 4. Participants will be informed that they have an equal chance to be assigned to the acupuncture group or the routine group. After participants sign the informed consent form and complete baseline assessments, the researcher will assign them a randomization number and allocate the participants to each group. The allocation of participants will be performed by an independent researcher at the clinical site who was not involved in the assessment of outcomes. Due to the design of this study, practitioners and eligible subjects will know the allocated group, while the outcome assessors, data collectors and statisticians will be blinded to group allocations during the study.

Intervention

The interventions will be performed by licensed acupuncturists with more than 3 years of experience in clinics. According to the traditional acupuncture theory and previous RCTs, the acupuncture study interventions were developed by a consensus of acupuncture experts. Before initiation of the study, the acupuncturists will obtain special training to gain total understanding of the treatment and receive a brochure that shows the acupuncture manipulation with detailed information. Subjects who are assigned to the acupuncture group will receive MMT and JTN treatment for 30 min per session. Meanwhile, those who are randomized to the routine group will receive MMT only. All 18 sessions of JTN treatment will be delivered over 6 weeks (3 per week) and followed by a 4-week follow-up period. The study schedule is shown in Fig. 2.

	STUDY PERIOD								
	Enrolment	Allocation	Treatment phase						Follow-up
Timepoint (week)	-1	0	1	2	3	4	5	6	10
ENROLLMENT:	×								
Eligibility screen	×								
Informed consent	×								
Allocation		×							
INTERVENTIONS:									
Acupuncture group			←————→						
Routine group			←————→						
ASSESSMENTS:									
VAS for carving			×	×		×		×	×
DCOM			×	×		×		×	×
The urine test for opioid-use			×	×		×		×	×
BAI			×	×		×		×	×
BDI-II			×	×		×		×	×
PSQI			×			×		×	×
SF-36			×			×		×	×
ADVERSE EVENTS:			×	×	×	×	×	×	×

Fig. 2 Schedule of enrolment, interventions and assessments

Acupuncture group

Base on the theory of JTN, every acupoint group has a special name and contains three or four points. In this study, we will choose three acupoints groups, which will be named *Dingshen-zhen*, *Sishen-zhen* and *Shouzhi-zhen*.

Dingshen-zhen will consist of three special points named *Dingshen-I*, *Dingshen-II* and *Dingshen-III*. *Dingshen-I* is directly 0.5 *cun* superior to EX-HN3, *Dingshen-II* is directly 0.5 *cun* superior to left GB14 and *Dingshen-III* is directly 0.5 *cun* superior to right GB14.

Sishen-zhen will consist of two acupoints and two special points named *Sishen-I*, *Sishen-II*, *Sishen-III* and *Sishen-IV*. *Sishen-I* is GV19 and *Sishen-II* are GV21; *Sishen-III* and *Sishen-IV* are, respectively, 1.5 *cun* left and right lateral to the anterior median line and at the same level as GV20. *Shouzhi-zhen* will consist of PC6, PC8 and HT7. The acupuncture points are described in Table 1 and Fig. 3.

Sterile stainless-steel disposable acupuncture needles (Huatuo, Suzhou, China; lengths and diameters 0.3

Table 1 Framework of the acupuncture point prescription

Acupuncture points	Description
GV21: Qianding (<i>Sishen-I</i>)	On the head, 3.5 B-cun superior to the anterior hairline, on the anterior median line.
GV19: Houding (<i>Sishen-II</i>)	On the head, 5.5 B-cun superior to the posterior hairline, on the posterior median line.
GV20: Baihui	On the head, 5B-cun superior to the anterior hairline, on the anterior median line.
<i>Sishen-III</i>	On the head, 1.5cun left lateral to the anterior median line and at the same level as GV20.
<i>Sishen-IV</i>	On the head, 1.5cun right lateral to the anterior median line and at the same level as GV20
EX-HN3:Yintang	On the head, between the right medial end of the eyebrow and the left one.
<i>Dingshen-I</i>	On the head, directly 0.5cun superior to EX-HN3
GB14: Yangbai	On the head, 1B-cun superior to the eyebrow, directly superior to the centre of the pupil.
<i>Dingshen-II</i>	On the head, directly 0.5cun superior to left GB14
<i>Dingshen-III</i>	On the head, directly 0.5cun superior to right GB14
HT7: Shenmen	On the anteromedial aspect of the wrist, radial to the flexor carpi ulnaris tendon, on the palmar wrist crease.
PC6: Neiguan	On the anterior aspect of the forearm, between the tendons of the palmaris longus and the flexor carpi radialis, 2B-cun proximal to the palmar wrist crease.
PC8: Laogong	On the palm of the hand, in the depression between the second and third metacarpal bones, proximal to the metacarpophalangeal joints.

Note: The prescribed acupoints come from the WHO Standard Acupuncture Point Locations in the Western Pacific Region

mm × 25 mm or 0.3 mm × 40 mm) will be used in this group. Among the points we choose, *Shouzhi-zhen* will be needled at an angle of 45–90° to the participant's skin, while *Dingshen-zhen* and *Sishen-zhen* will be needled at an angle of 15–30° to the skin. The needles will be inserted at a depth of 5–30 mm. After that, the needles are stimulated manually to achieve the typical acupuncture sensation of *de qi*, which is characterized as soreness, numbness and heaviness. During every session, the acupuncture needles will be retained for 30 min and twirled every 10 min. JTN treatment will be discontinued if the patients suffer from any adverse events, and the acupuncture physicians can decide to terminate the trial.

Routine group

All participants in the control group will receive only MMT; they will not receive any treatment related to acupuncture after randomization for 10 weeks. During the study period, there will be five face to face visits and a diary will be collected. After the trial, all participants will have a chance to receive JTN treatment for 6 weeks as compensation.

Outcome

Primary outcome

The daily consumption of methadone Daily consumption of methadone from baseline to the 2nd, 4th, 6th and 10th weeks will be presented. One primary outcome measure will be the change in the daily consumption of methadone from baseline to the 6th week. The enrolled patients will go to the clinic to receive methadone every day, and the dosage will be strictly administered by the doctor, which will be recorded in the clinic computer system.

The visual analogue scale for drug craving The other primary outcome will be the determination of drug craving using a visual analogue scale for drug craving on which the participants will mark on a 100-mm line in proportion to their craving from 0 (no craving) to 100 (strong craving) [21]. The degree of craving will be marked by the subjects at baseline and the 2nd, 4th and 6th weeks after acupuncture administration and at the post-treatment follow-up visit in the 10th week.

Secondary outcome

The urine test for opioid use One of the secondary outcome measures will be a positive urine test for opioid use. Subjects will be asked to submit the urine sample at baseline and the 2nd, 4th and 6th weeks after acupuncture administration and at the post-treatment follow-up visit in the 10th week.

The 36-item Short Form Survey The quality of life will be assessed through the Chinese version of the SF-36 from baseline to the 4th, 6th and 10th weeks. Testing of the Chinese version of SF-36 has shown validity similar to that of the original language version [22]. The quality of life is assessed by SF-36 in eight domains: general health (GH), physical functioning (PF), role limitations due to physical problems (RP), role limitations due to emotional problems (RE), bodily pain (BP), social functioning (SF), vitality (VT) and general mental health (MH) [23]. PF, RP, BP, SF and RE will assess the absence of limitations or disability, while the positive state of well-being will be assessed by GH, VT and MH. Subjects who achieve mid-range scores indicate no reported limitations or disabilities [24]. In this study, higher scores will indicate better health status.

Pittsburgh sleep quality index (PSQI) Sleep quality will be assessed using the Chinese version of the PSQI [25] from baseline to the 4th, 6th and 10th weeks. The Chinese version of the PSQI has demonstrated reliability and validity similar to that of the original language

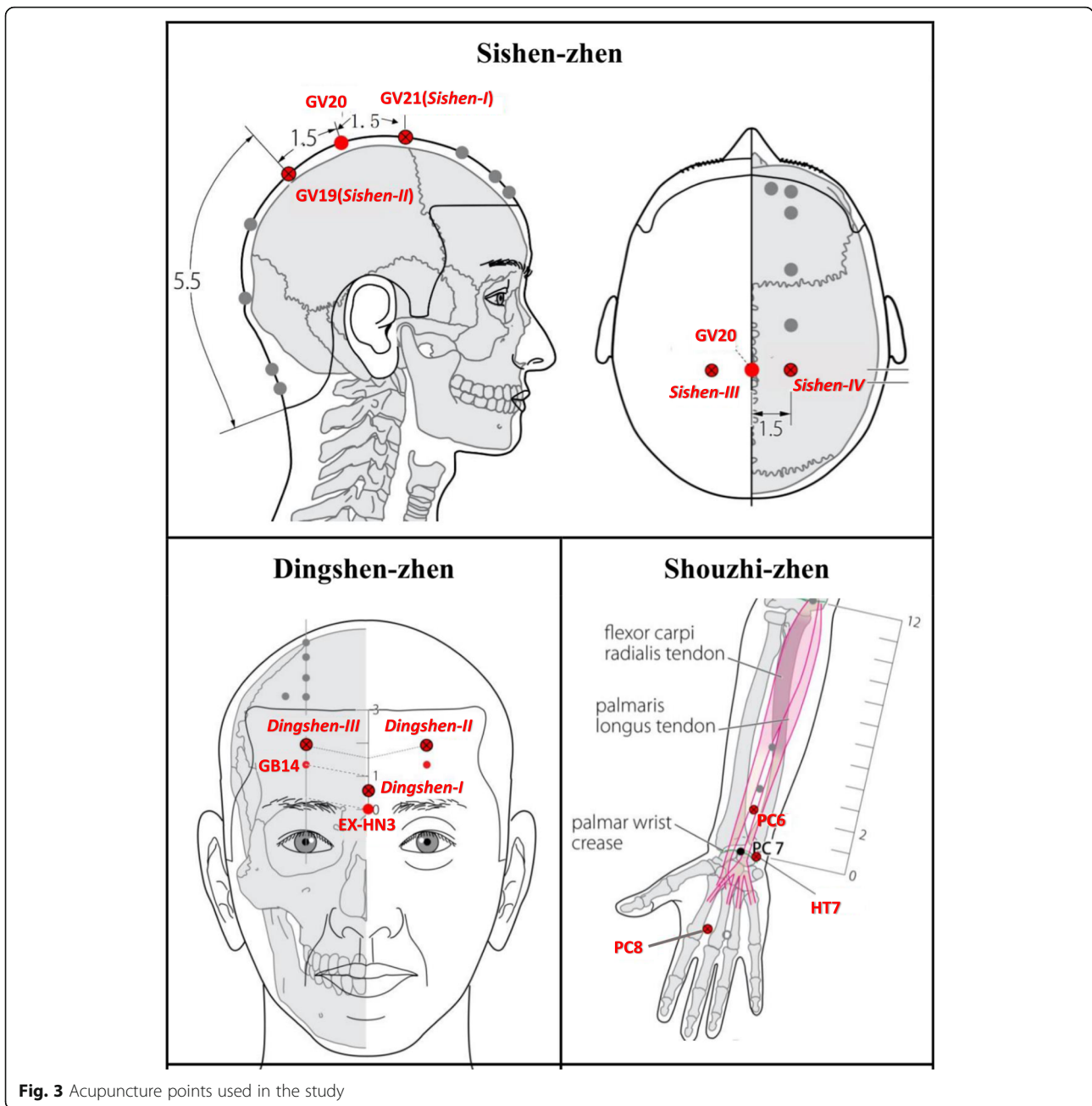


Fig. 3 Acupuncture points used in the study

version [26]. The PSQI evaluates sleep disturbances through subjective sleep quality, sleep duration, sleep latency, habitual sleep efficiency, sleep disturbances, daytime dysfunction and use of sleeping medication. Each item is graded on 4-point scale (0–3), which is summed together to gain a total score (0 to 21). Higher scores show that patients suffer a higher severity of sleep disturbance, and a total score higher than 5 indicates “poor sleep”.

The Beck Depression Inventory-II (BDI-II) BDI-II, a self-reported questionnaire, will be used to assess the

severity of depression, which consists of 21 symptoms [27]. Each symptom is graded on 4-point scale (0–3), which is summed together to yield a total score (0 to 63). Higher scores mean a greater severity of depression. The Chinese version has been validated in adolescents [28]. The BDI-II will be assessed at baseline and the 2nd, 4th, 6th and 10th weeks.

The Beck Anxiety Inventory (BAI) Anxiety symptoms will be assessed by the BAI, which is a 21-item questionnaire [29]. Each symptom is rated on a 4-point scale (0–3). The maximum score is 63, and higher scores indicate

greater severity of anxiety. The BAI will be assessed at baseline and at the 2nd, 4th, 6th and 10th weeks.

Safety

All participants will have some tests to check their body at screening and after 6 weeks of treatment. These tests will be relative to the heart, liver, kidney and other organs, including white blood cell count, haematocrit, haemoglobin, platelets, aspartate aminotransferase/alanine aminotransferase, blood urea nitrogen, creatinine, gamma-glutamyl transpeptidase, erythrocyte sedimentation rate and electrocardiogram.

Adverse events (AEs) are defined as any unexpected unfavourable signs, symptoms or feelings occurring in subjects during the entire period, whether or not associated with JTN treatment. Every AE will be fully recorded on the case report form (CRF), including all details of AEs. Serious AEs that threaten a participant's life or result in hospitalization will be reported to the Research Ethics Committee concerned within 24 h. All the tests and AEs are recorded, with an aim to evaluate the safety of JTN.

Quality control, data management and monitoring

Before recruitment, the entire team will be required to attend a training workshop, which ensures their strictly compliance with the study protocol and total understanding of the trial administration process. The interventions will be performed by licensed acupuncturists with more than 3 years of experience in hospitals or clinics. They will also receive a brochure about the protocol and standard operating procedures of JTN.

The data will be carefully collected and recorded on CRFs. All data will be put onto a computer with password protection by staff blinded to the group allocation and checked twice by investigators after data entry. Data quality will be checked regularly by research assistants and supervised by monitors. The original CRFs and all other forms will be archived securely at the Medical College of Acu-Moxi and Rehabilitation of Guangzhou University of Chinese Medicine. The South China Research Center of Guangzhou University of Chinese Medicine will be responsible for monitoring for the data, regulatory management of this trial, auditing the trial every 3 months independently of investigators and the sponsor and deciding on any premature closure of the study.

Sample size calculation

The primary outcome measure for drug craving is VAS. Based on previous studies [5, 30], after 4 weeks of treatment, the VAS for drug craving score difference between the baseline and the endpoint in the sham acupuncture group should be approximately 20 ± 30 , while the true

acupuncture group should be approximately 37.5 ± 28 . Type 1 error is assumed at 0.05, and type 2 error is assumed at 0.1. PASS11.0 software (CSS Statistical Software, Kaysville, UT, USA) has been used to determine the sample size, and the minimum sample size is 60 subjects for each group. Considering a dropout rate of 15%, a total of 140 subjects will be required with 1:1 allocation to each group (70 participants per group) for this study.

Statistical analysis

All analyses will be conducted based on the intention-to-treat principle and per-protocol (PP) analysis. Missing data will be replaced according to the principle of multiple imputations. Descriptive statistics will be presented for each group as the mean change (SD, 95% confidence intervals). All statistical tests will be analysed by using the SPSS statistical software version 20 (IBM SPSS Statistics, New York, USA). *P* values < 0.05 (two-sided) are considered statistically significant. Demographic and baseline data will be tabulated and evaluated using analysis of variance (ANOVA) or the χ^2 test. To compare means between two groups, we will use the independent sample *t* test. Two-way repeated-measures analysis of variance (ANOVA) will be carried out to explore time \times treatment interaction ("time" is the unit of measurement).

Discussion

To our knowledge, JTN treatment for patients receiving MMT has not been intensively investigated. This study describes the protocol of a randomized controlled trial to test the effectiveness and safety of acupuncture as an adjunctive therapy for patients receiving MMT.

JTN, a type of acupuncture technique, has been practised for decades. One of the features of JTN is choosing treatment acupoints in a unique way. The prescription of JTN is comprised of several acupoint groups, and each acupoint group consists of three or four special acupoints that are based on local points, influential points or empirical points. The law of combination of these points may have more effectiveness to treat disease than a normal mixture of 'cookbook' points.

According to previous studies, the effectiveness of acupuncture as an adjunct therapy in patients receiving MMT has been controversial. Bearn reported a lack of effect for adjunctive MMT with auricular acupuncture upon withdrawal symptoms or drug craving [31]. Pei Lin showed a lack of effect for adjunctive MMT with auricular acupuncture upon the number of daily consumed cigarettes, withdrawal syndrome and relapse rate [32]. However, several studies have reported positive findings in the effectiveness of acupuncture for the treatment of drug dependence [33–35]. Chan claimed that 4 weeks of acupuncture as an adjunct to MMT may reduce the

daily dosage of methadone and may cause a greater improvement in sleep latency [5]. Although JTN has been practised for several decades, this is the first time that JTN will be applied to treat opioid dependence. According to the theory of TCM, the acupoints we choose may help to tranquilize and free the body from tension, which may have the potential to ameliorate several mental or physical symptoms of opioid dependence.

One important limitation of our study is that it is an open-label trial, making it impossible to execute a blinding method. Patients may have strong treatment preferences for acupuncture, which may produce adjuvant treatment effects. To reduce this kind of bias, the acupuncturists and outcome assessors will be different, which will maintain the objectivity of assessment of outcomes. We will exclude the investigators and statisticians from randomization as well, to make sure all of them are blind to allocation.

In conclusion, the results of this trial will provide evidence on the effectiveness and safety of acupuncture as adjunctive therapy for patients receiving MMT.

Trial status

This trial is currently recruiting patients, which started on 5 October 2019 and is anticipated to end on 1 December 2020. The protocol is Version 3.0 dated 2019/09/16.

Supplementary information

The online version contains supplementary material available at <https://doi.org/10.1186/s13063-020-04930-x>.

Additional file 1. Standard Protocol Items: Recommendations for Interventional Trials (SPIRIT) Checklist.

Additional file 2. Standards for Reporting Interventions in Clinical Trials of Acupuncture (STRICTA).

Abbreviations

JTN: Jin's three-needle acupuncture; TCM: Traditional Chinese medicine; DSM-V: Diagnostic and Statistical Manual of Mental Disorders, 5th edition; PSQI: Pittsburgh sleep quality index; BDI-II: Beck Depression Inventory-II; BAI: Beck Anxiety Inventory; DCOM: Daily consumption of methadone; MMT: Methadone maintenance therapy; AEs: Adverse events; CRFs: Case report forms; PP: Per-protocol

Acknowledgements

We would like to thank the staff working at the Affiliated Brain Hospital of Guangzhou Medical University for their help with subject recruitment.

Authors' contributions

LML, CZT, SHX and HW conceived this trial. SHX, HW and SCX were responsible for planning the draft and revising the manuscript. JCZ, CZT and SQG were responsible for recruiting and treating the patients. YL and HW were involved in collecting the data. The authors read and approved the final manuscript.

Funding

This work is funded by the Young Top Talent Project of Scientific and Technological Innovation in Special Support Plan for Training High-level Talents in Guangdong (no. 2017TQ04R627) and the Youth Research and

Cultivation Project of Guangzhou University of Chinese Medicine (A1-AFD018191A40). The funding agency had no role in the design of this study and will not have any role during its execution or analyses, interpretation of the data or decision to submit results.

Availability of data and materials

The full protocol of this study will be provided by the corresponding author. Datasets generated or analysed during the current study will be available from the corresponding author on reasonable request.

Ethics approval and consent to participate

This study protocol has been approved by the Ethics Committee of the First Affiliated Hospital of Guangzhou University of Traditional Chinese Medicine (No.Y-2019-241). The study coordinator will obtain consent from the eligible patients, which will ask for permission for the research team to share relevant data and notice that there is neither anticipated harm nor compensation for trial participation.

Consent for publication

Not Applicable.

Competing interests

The authors declare that they have no competing interests.

Author details

¹Department of Neurology, Sun Yat-sen Memorial Hospital, Sun Yat-sen University, 107 Yanjiang West Road, Guangzhou 510120, People's Republic of China. ²The Affiliated Brain Hospital of Guangzhou Medical University (Guangzhou Hui'ai Hospital), Guangzhou 510006, People's Republic of China. ³The First Affiliated Hospital of Guangzhou University of Chinese Medicine, Guangzhou 510405, People's Republic of China. ⁴Medical College of Acu-Moxi and Rehabilitation, Guangzhou University of Chinese Medicine, Guangzhou, China.

Received: 26 October 2019 Accepted: 25 November 2020

Published online: 07 December 2020

References

- Nations U. Office of Drug and Crime: World Drug Report 2018 (United Nations publication, Sales No. E.18.XI.9) [R]. 2018.
- China Drug Report 2017[Z]. 2017:2018. http://www.nncc626.com/2018-06/25/c_129900461.htm.
- Morabbi MJ, Razaghi E, Moazen-Zadeh E, Safi-Aghdam H, Zarrindast MR, Vossoughi N, Akhondzadeh S. Pexacerfont as a CRF1 antagonist for the treatment of withdrawal symptoms in men with heroin/methamphetamine dependence: a randomized, double-blind, placebo-controlled clinical trial. *Int Clin Psychopharmacol*. 2018;33(2):111–9.
- Turton S, Lingford-Hughes A. Neurobiology and principles of addiction and tolerance. *Medicine (Baltimore)*. 2016;44(12):693–6.
- Chan YY, Lo WY, Li TC, Shen LJ, Yang SN, Chen YH, Lin JG. Clinical efficacy of acupuncture as an adjunct to methadone treatment services for heroin addicts: a randomized controlled trial. *Am J Chin Med*. 2014;42(3):569–86.
- Peles E, Schreiber S, Adelson M. Variables associated with perceived sleep disorders in methadone maintenance treatment (MMT) patients. *Drug Alcohol Depend*. 2006;82(2):103–10.
- Kim YS, Jun H, Chae Y, Park HJ, Kim BH, Chang IM, Kang SK, Lee HJ. The practice of Korean medicine: an overview of clinical trials in acupuncture. *Evid Based Complement Alternat Med*. 2005;2(3):325–52.
- Culliton PD, Kiresuk TJ. Overview of substance abuse acupuncture treatment research. *J Altern Complement Med (New York, NY)*. 1996;2(1):149–59 discussion 161-145.
- Brumbaugh AG. Acupuncture: new perspectives in chemical dependency treatment. *J Subst Abuse Treat*. 1993;10(1):35–43.
- Cai X, Song X, Li C, Xu C, Li X, Lu Q. Acupuncture inhibits cue-induced heroin craving and brain activation. *Neural Regen Res*. 2012;7(33):2607–16.
- Yan L, Lei Z, Yu L, Bo C, Jing X, Yue-lai C. Therapeutic efficacy observation on acupuncture for post-withdrawal syndrome of heroin dependence. *J Acupunct Tuina Sci*. 2012;10(03):155–9.
- Jiang YP, Liu H, Xu P, Wang Y, Lu GH. Effect of electro-acupuncture intervention on cognition attention bias in heroin addiction abstinence-a

- dot-probe-based event-related potential study. *Chin J Integr Med.* 2011; 17(4):267–71.
13. Chen YH, Ivanic B, Chuang CM, Lu DY, Lin JG. Electroacupuncture reduces cocaine-induced seizures and mortality in mice. *Evid Based Complement Alternat Med.* 2013;2013:134610.
 14. Wu JM, Wei DY, Luo YF, Xiang XY. Clinic research on heroin de-addiction effects of acupuncture and its potentiality of preventing relapse. *Zhong Xi Yi Jie He Xue Bao.* 2003;1(4):268–72.
 15. Liao W, Tang C, Zhang J. Discussion on the principle and treatment pathway of Jin's three-needle technique for mind regulation and treatment from the "adjusting qi to regulate mind, adjusting blood to regulate mind". *Zhongguo Zhen Jiu.* 2018;38(11):1235–8.
 16. Yuan Q, Liu LL, Shen XJ, Chen F, Wu YC. On connotation of Jin's three-needle technique. *Zhongguo Zhen Jiu.* 2014;34(7):701–4.
 17. Yang H-t, Huang F, Kuang W-c, Lu Y-q, Chun-di W. Efficacy of acupuncture at Zhisanzhen in treatment of primary insomnia: a report of 35 cases. *J Anhui Univ Chin Med.* 2014;33(3):74–5.
 18. Chan AW, Tetzlaff JM, Altman DG, Laupacis A, Gotzsche PC, Krleza-Jeric K, Hrobjartsson A, Mann H, Dickersin K, Berlin JA, et al. SPIRIT 2013 statement: defining standard protocol items for clinical trials. *Ann Intern Med.* 2013; 158(3):200–7.
 19. MacPherson H, Altman DG, Hammerschlag R, Youping L, Taixiang W, White A, Moher D. Revised Standards for Reporting Interventions in Clinical Trials of Acupuncture (STRICTA): extending the CONSORT statement. *PLoS Med.* 2010;7(6):e1000261.
 20. American Psychiatric Association. *Diagnostic and Statistical Manual of Mental Disorders (DSM-V)*. Arlington: American Psychiatric Association; 2013.
 21. Wewers ME, Lowe NK. A critical review of visual analogue scales in the measurement of clinical phenomena. *Res Nurs Health.* 1990;13(4):227–36.
 22. Tseng HM, Lu JF, Gandek B. Cultural issues in using the SF-36 Health Survey in Asia: results from Taiwan. *Health Qual Life Outcomes.* 2003;1:72.
 23. Ware JE Jr, Sherbourne CD. The MOS 36-item short-form health survey (SF-36). I. Conceptual framework and item selection. *Med Care.* 1992;30(6):473–83.
 24. McHorney CA, Ware JE Jr, Raczek AE. The MOS 36-Item Short-Form Health Survey (SF-36): II. Psychometric and clinical tests of validity in measuring physical and mental health constructs. *Med Care.* 1993;31(3):247–63.
 25. Buysse DJ, Reynolds CF 3rd, Monk TH, Berman SR, Kupfer DJ. The Pittsburgh Sleep Quality Index: a new instrument for psychiatric practice and research. *Psychiatry Res.* 1989;28(2):193–213.
 26. Tsai PS, Wang SY, Wang MY, Su CT, Yang TT, Huang CJ, Fang SC. Psychometric evaluation of the Chinese version of the Pittsburgh Sleep Quality Index (CPSQI) in primary insomnia and control subjects. *Qual Life Res.* 2005;14(8):1943–52.
 27. Beck AT, Ward CH, Mendelson M, Mock J. Beck Depression Inventory (BDI). *Arch Gen Psychiatry.* 2003;4(6):504–6.
 28. Yang W-h, Liu S-l, Zhou T, Fang P. Reliability and validity of Chinese version of the Beck Depression Inventory-II in Chinese adolescents. *Chin J Clin Psychol.* 2014;22(2):240–5.
 29. Beck AT, Epstein N, Brown G, Steer RA. An inventory for measuring clinical anxiety: psychometric properties. *J Consult Clin Psychol.* 1988;56(6):893–7.
 30. Fudala PJ, Bridge TP, Herbert S, Williford WO, Chiang CN, Jones K, Collins J, Raisch D, Casadonte P, Goldsmith RJ, et al. Office-based treatment of opiate addiction with a sublingual-tablet formulation of buprenorphine and naloxone. *N Engl J Med.* 2003;349(10):949–58.
 31. Bearn J, Swami A, Stewart D, Atnas C, Giotto L, Gossop M. Auricular acupuncture as an adjunct to opiate detoxification treatment: effects on withdrawal symptoms. *J Subst Abus Treat.* 2009;36(3):345–9.
 32. Lua PL, Talib NS. Auricular acupuncture for drug dependence: an open-label randomized investigation on clinical outcomes, health-related quality of life, and patient acceptability. *Altern Ther Health Med.* 2013;19(4):28–42.
 33. Washburn AM, Fullilove RE, Fullilove MT, Keenan PA, McGee B, Morris KA, Sorensen JL, Clark WW. Acupuncture heroin detoxification: a single-blind clinical trial. *J Subst Abus Treat.* 1993;10(4):345–51.
 34. Lipton DS, Brewington V, Smith M. Acupuncture for crack-cocaine detoxification: experimental evaluation of efficacy. *J Subst Abus Treat.* 1994; 11(3):205–15.
 35. Shwartz M, Saitz R, Mulvey K, Brannigan P. The value of acupuncture detoxification programs in a substance abuse treatment system. *J Subst Abus Treat.* 1999;17(4):305–12.

Publisher's Note

Springer Nature remains neutral with regard to jurisdictional claims in published maps and institutional affiliations.

Ready to submit your research? Choose BMC and benefit from:

- fast, convenient online submission
- thorough peer review by experienced researchers in your field
- rapid publication on acceptance
- support for research data, including large and complex data types
- gold Open Access which fosters wider collaboration and increased citations
- maximum visibility for your research: over 100M website views per year

At BMC, research is always in progress.

Learn more biomedcentral.com/submissions

