



Cite this: *RSC Adv.*, 2019, 9, 27732

Multi-walled carbon nanotube-based composite materials as catalyst support for water–gas shift and hydroformylation reactions†

Patrick Wolf,^{‡a} Morten Logemann,^{‡b} Markus Schörner,^a Laura Keller,^{bc} Marco Haumann^{ib}*^a and Matthias Wessling^{ib}^{bc}

In times of depleting fossil fuel reserves, optimizing industrial catalytic reactions has become increasingly important. One possibility for optimization is the use of homogenous catalysts, which are advantageous over heterogeneous catalysts because of mild reaction conditions as well as higher selectivity and activity. A new emerging technology, supported ionic liquid phase (SILP), was developed to permanently immobilize homogeneous catalyst complexes for continuous processes. However, these SILP catalysts are unable to form freestanding supports by themselves. This study presents a new method to introduce the SILP system into a support made from multi-walled carbon nanotubes (MWCNT). In a first step, SILP catalysts were prepared for hydroformylation as well as low-temperature water–gas shift (WGS) reactions. These catalysts were integrated into freestanding microtubes formed from MWCNTs, with silica (for hydroformylation) or alumina particles (for WGS) incorporated. In hydroformylation, the activity increased significantly by around 400% when the pure MWCNT material was used as SILP support. An opposite trend was observed for WGS, where pure alumina particles exhibited the highest activity. A significant advantage of the MWCNT composite materials is the possibility to coat them with separation layers, which allows their application in membrane reactors for more efficient processes.

Received 26th June 2019
Accepted 26th August 2019

DOI: 10.1039/c9ra04830h

rsc.li/rsc-advances

Introduction

Homogeneous catalysts offer several advantages over their heterogeneous counterparts: especially mild reaction conditions, higher activity and better selectivity.¹ In light of depleting fossil fuel reserves, the use of such catalysts is highly recommended.² However, recycling of homogeneous catalysts from the product stream constitutes a significant drawback for technical implementation.³ To simplify the recycling of liquid catalysts, the supported ionic liquid phase (SILP) technology was developed.⁴ SILP technology is a fundamental, new approach to achieve the ambitious goal of effectively and permanently immobilizing homogeneous catalyst complexes for continuous processes.⁵ SILP technology involves surface modification of a porous solid by dispersing a thin film of non-volatile ionic liquid on the inner surface of the support material.

Thus, the dissolved homogeneous catalyst does not evaporate into the gaseous reactant stream and is retained inside the fixed SILP catalyst bed. The concept has been developed within the past 15 years in academia and industry, including the successful proof-of-concept for ultra-low temperature water–gas shift reaction⁶ (in cooperation with Clariant and Linde) and gas-phase hydroformylation⁷ (in cooperation with Evonik) by some of the authors. Both reactions are of high industrial importance. The water–gas shift (WGS) reaction, meaning the exothermic conversion of carbon monoxide and water to carbon dioxide and hydrogen, still plays an essential role in the technical hydrogen production nowadays. Carbon monoxide, which is formed during hydrocarbon steam reforming and can act as severe catalyst poison, *e.g.*, for ammonia synthesis or fuel cell (FC) catalysts, can be reduced to low levels below 0.5 vol%.⁸ Due to the exothermic nature of the WGS equilibrium reaction, low temperatures around 150 °C and below are desirable to achieve CO levels below 10 ppm.⁹ Commercial heterogeneous catalysts require reaction temperatures around 200 °C and yield a CO level of 0.3 vol%. Such concentrations are still too high for *e.g.* the Pt catalyst in FC systems or the Fe catalyst in the Haber–Bosch process.^{10,11} In 2010, a Ru-SILP catalyst was developed by Werner *et al.* that allows operation between 120 °C to 160 °C, thereby outperforming state of the art commercial catalysts.^{6,12} The SILP catalyst is made of a rutheniumchlorocarbonyl dimer dissolved in the ionic liquid 1-butyl-2,3-dimethylimidazolium

^aLehrstuhl für Chemische Reaktionstechnik (CRT), Friedrich-Alexander-Universität Erlangen-Nürnberg (FAU), Egerlandstr. 3, 91058 Erlangen, Germany. E-mail: marco.haumann@fau.de

^bChemical Process Engineering, RWTH Aachen University, Forckenbeckstr. 51, 52074 Aachen, Germany

^cDWI – Leibniz Institute for Interactive Materials, Forckenbeckstr. 50, 52074 Aachen, Germany

† Electronic supplementary information (ESI) available. See DOI: 10.1039/c9ra04830h

‡ Both authors contributed equally to the paper.



chloride $[C_4C_1C_1Im]Cl$ inside porous γ -alumina (see Fig. 1). Further improvement of this promising catalyst system could be better heat management to avoid hot spots and *in situ* removal of one of the formed products (CO_2 or H_2) *via* membranes in order to simplify downstream separation.

Promising SILP catalysts have also been developed that allow hydroformylation of highly diluted or mixed feeds with exceptionally high selectivity, adding value to industrial waste streams.^{13,14} For the first time, the applicability of sophisticated but labile phosphite ligands (see bpp in Fig. 1) in hydroformylation has been reported with catalyst stabilities exceeding 800 h time-on-stream with cumulative turn-over-numbers exceeding 400,000 and high space-time-yields of $850 \text{ kg}_{\text{product}} \text{ m}_{\text{SILP}}^{-1} \text{ h}^{-1}$.¹³ These values are high enough to make new hydroformylation processes based on SILP materials economically viable. A possible drawback is the undesired aldol condensation, in which two aldehyde molecules can react to form side products with high boiling points that accumulate in the ionic liquid film.^{15,16} This side reaction has to be suppressed in order to maintain high catalyst activity. One option is to remove the formed aldehydes immediately from the SILP catalyst in a membrane type reactor. Therefore, we aim at developing SILP based membrane reactors for both WGS and hydroformylation reactions. While the WGS will benefit from product removal due to the shift in equilibrium conversion, the yield of the desired aldehyde in hydroformylation will benefit from *in situ* removal due to less aldol condensation (see Scheme 1).

A material suitable for both membrane formation and SILP impregnation has to be identified. Recently, we have shown that

polymer-based spherical activated carbon (PBSAC) can serve as support for SILP hydroformylation catalysts.^{17,18} Proper surface modification can yield SILP catalysts with TOF of $700 \text{ mol}_{\text{pentanal}} \text{ mol}_{\text{Rh}}^{-1} \text{ h}^{-1}$ in gas-phase 1-butene hydroformylation.¹⁸ Using another carbonaceous material, in 2014 Gendel *et al.* demonstrated the fabrication of freestanding hollow fibers made only from multi-walled carbon nanotubes (MWCNT).¹⁹

In this work, the fabrication procedure is altered to include small-scale particles within the MWCNT network, which enhance catalytic activity in a SILP reaction system. The ability to tune microtubes *via* the addition of small particles was first reported by Keller *et al.*²⁰ This particle inclusion offers possibilities to adjust porosity and pore volume for a proper catalyst distribution in the microtube. Previous experiments indicated that silica (SiO_2) is the support material of choice for the hydroformylation reaction, while alumina (Al_2O_3) particles work well in the water gas shift reaction.^{12,21}

Such small-scale particles are unable to act as a freestanding membrane support material on their own. However, integrated into a MWCNT network, the MWCNTs combined with small particles build a freestanding catalytic support, which is tunable to different reaction systems, depending on various catalysts and reaction kinetics. In order to evaluate the applicability of these microtubes as support for SILP catalyzed reactions, we analyzed the performance of short MWCNT tube fragments as a structured packing for both reactions mentioned above. We included these particles into the microtube structure with various particle ratios for a better understanding of the reaction performances.

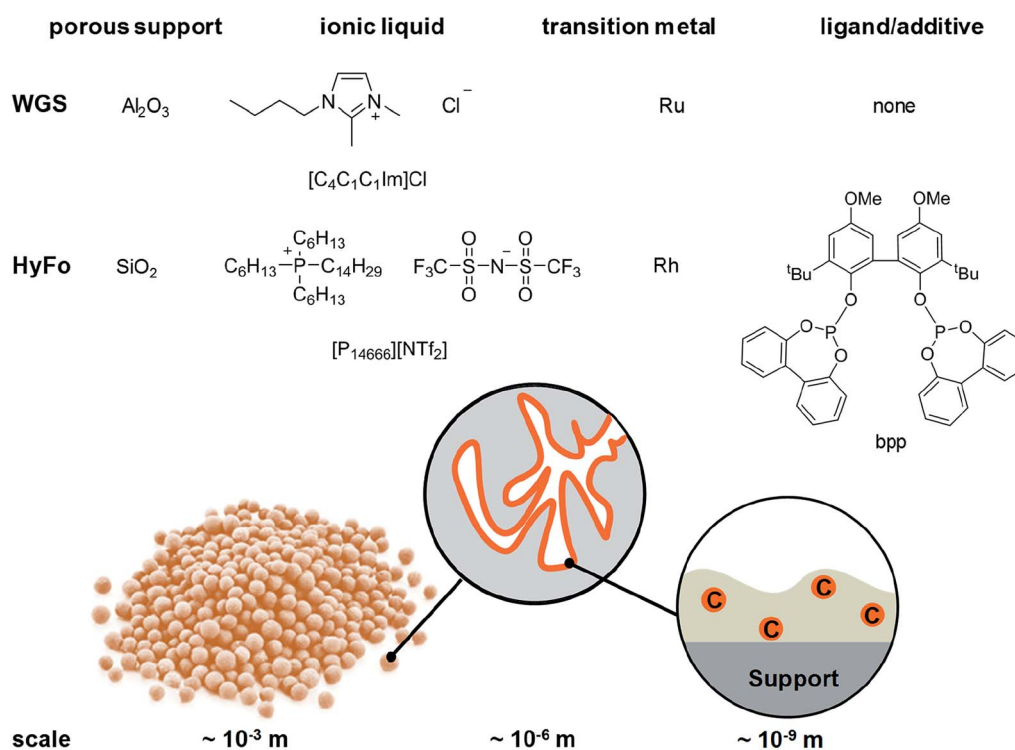
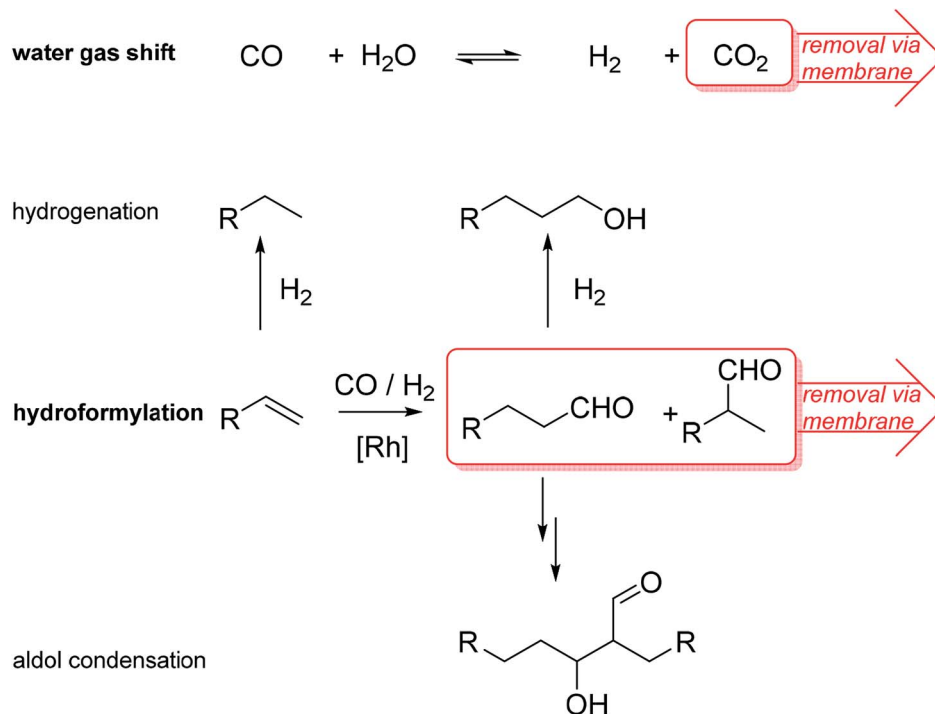


Fig. 1 Building blocks for water gas shift (WGS) and hydroformylation (HyFo) catalysis using SILP materials. Hydroformylation ligand biphephos bpp (6,6'-((3,3'-di-*tert*-butyl-5,5'-dimethoxy-[1,1'-biphenyl]-2,2'-diyl)bis(oxy))didibenzo[*d,f*][1,3,2]dioxaphosphepine).



Scheme 1 Reaction schemes of SILP catalyzed water–gas shift (WGS) and hydroformylation (HyFo) with attempted *in situ* removal of one product. R = alkyl chain.

Experimental

All gases were purchased from Linde Gas. For hydroformylation, 1-butene (99.5 vol%), CO (99.95 vol%) and H₂ (99.9990 vol%) were used with He (99.9990 vol%) as balance. Catalytic WGS tests were conducted using a mixture of CO (99.95 vol%) and H₂O diluted with N₂ (99.9990 vol%).

Multiwalled carbon nanotubes were purchased from Sigma-Aldrich. The MWCNT's have an outside diameter of 10 nm ± 1 nm, an inside diameter of 4.5 nm ± 0.5 nm and are 3–6 μm long. Their carbon content is ≥98%. Silica particles SYLOID® C 803 with an average diameter of 3.4–4 μm were provided from Grace. Two different alumina oxide particles were used in this study. Puralox TM 100/150 UF with an average diameter of 2.5 μm were kindly donated from Sasol Germany GmbH. Gamma-alumina (γ-Al₂O₃) powder with a particle size of approx. 5 μm was purchased from Pengda Munich GmbH. Polypropylene (PP) S6/2 hollow fiber membranes for filtration of MWCNT/MWCNT + particle suspension were ordered from Accurel (1.8 ± 0.15 mm inside diameter). Further chemicals used were Triton-X 100 (Carl Roth), iso-propanol (Applichem, 98% purity) and deionized water (2.2 μS cm⁻¹).

Preparation of MWCNT, MWCNT-SiO₂ and MWCNT-Al₂O₃ materials

A detailed description of the production of MWCNT based microtubes and possibilities for geometric variations, *e.g.*, wall thickness and length, can be found elsewhere.¹⁹ Within this work, a focus was placed on the production of MWCNT

microtubes with integrated particles in the MWCNT wall structure. For the hydroformylation case study, 500 mg of various particle combinations of MWCNT and SiO₂ were suspended in 500 mL deionized water. The tested fractions were 0, 30, 50, and 70 wt% SiO₂ and are listed in Table S1.† For the case study of the WGS reaction, alumina oxide particles from either Sasol or Pengda were mixed with MWCNT and suspended in 500 mL deionized water. The combination of Al₂O₃ particles and MWCNT added up to 500 mg. The tested fractions were 0, 10, 30 and 50 wt% Al₂O₃ and are listed in Table S2.† Furthermore, all three materials, MWCNT, SiO₂ and Al₂O₃ were tested in their powder form for reference values.

The fabrication process of the freestanding tubes was the same for both SiO₂ and Al₂O₃ particles integration. To ensure well-dispersed particles within the suspensions, 5 mL of Triton-X 100 was added as a surfactant. Each suspension was sonicated for three hours (Hielscher UP200S) and subsequently stirred with a magnetic stirrer for an hour. In consecutive steps, each suspension was filtered in an inside out filtration through the polypropylene (PP) S6/2 hollow fiber membrane, which had been cut to a length of 250 mm and glued shut on one end. Filtration occurred with a constant pressure of 5 bar until 3.4 mL_{suspension} cm_{PP-membrane}⁻¹ were transported through the membrane. A scheme of the experimental set-up is given in Fig. 2.

The MWCNT/particle suspension forms a filter cake on the inside of the PP membrane during filtration. After the filtration, a cleaning step was added, to remove any remaining Triton-X 100 impurities in the filter cake. 50 mL of isopropanol were flushed through the PP membrane with 0.7 mL min⁻¹ using a syringe pump (Harvard Apparatus, PHD Ultra).

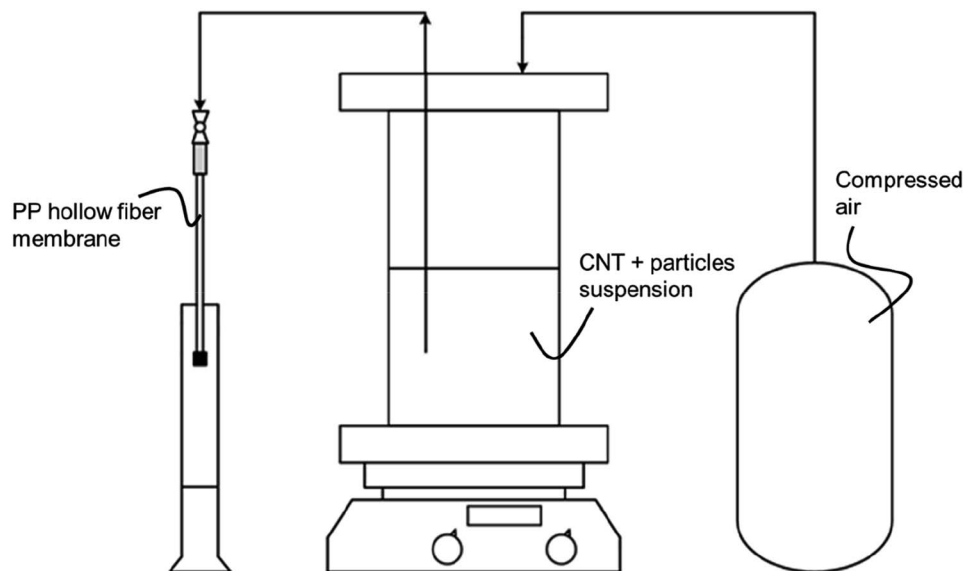


Fig. 2 Schematic representation of the microtube production via filtration process.

This cleaning step is necessary because otherwise, the MWCNT based microtubes exhibit defects.¹⁹ These defects destabilize the microtubes, which would hinder their use as a support material. After removing the surfactant, a drying step was performed overnight in a vacuum oven at 30 °C and 30 mbar. In a final step, one end of the PP membrane was carefully cut off with a scalpel to pull out the formed MWCNT microtube from the shell.

SILP material characterization

High-resolution images were taken using two different scanning electron microscopes (S-3000 and S-4800, Hitachi). The samples were sputtered with an approximately 3 nm thick gold layer in a high vacuum sputter coater (EM ACE600, Leica). For sample preparation, MWCNT microtubes were placed in liquid nitrogen for 2 minutes and broken immediately after exiting the liquid nitrogen bath. The Barrett, Joyner and Halenda (BJH) method was used to estimate pore size and pore volume from nitrogen adsorption isotherms.²² The nitrogen adsorption was conducted at −196 °C (ASAP 2020, Micromeritics). Prior to analysis, all samples were dried in a vacuum oven overnight at 30 mbar and 50 °C. Afterward, the samples were degassed at 250 °C for four hours at 20 μbar. Thermogravimetric analysis (TGA STA6000, PerkinElmer) was used to determine the thermal stability of MWCNT microtubes.

Preparation of MWCNT-based SILP WGS catalysts

Water gas shift SILP catalyst were prepared using standard Schlenk techniques. In a first step, the ionic liquid 1-butyl-2,3-dimethylimidazolium chloride [C₄C₁C₁Im]Cl was dissolved in dichloromethane (typically 30 mL DCM) in a round-bottom Schlenk flask under argon atmosphere. After stirring the solution till complete dissolution of the ionic liquid (10–15 min at 25 °C), the precursor complex [Ru(CO)₃Cl₂]₂ (purchased from

Alfa Aesar) was added, followed by another 15 min of stirring. Subsequently, 0.4 g of the MWCNT-Al₂O₃ support material (crushed to approx. 1 mm length) was added and stirred for an additional 5 min. The stirrer bar was taken out of the flask before the solvent was removed, to reduce any further crushing of the particles due to mechanical stress. The solvent withdrawal was carried out in two steps in a rotary evaporator (step 1: 2 h, 40 °C, 900 mbar; step 2: 1 h, 40 °C, <3 mbar). After solvent removal, free-flowing, shiny black SILP catalyst particles were obtained when using MWCNT supports, while pure alumina yielded a yellow SILP powder. The resulting catalyst had a nominal metal loading of $w_{Ru} = 2$ wt% (see eqn (1)).

$$w_{Ru} = \frac{m_{Ru}}{m_{support}} \times 100\% \quad (1)$$

The pore filling degree with ionic liquid, defined as ratio between ionic liquid volume and total pore volume, was set to $\alpha_{IL} = 34$ vol% (see eqn (2)).

$$\alpha_{IL} = \frac{V_{IL}}{V_{support}} \times 100\% \quad (2)$$

Preparation of MWCNT-based SILP hydroformylation catalysts

Hydroformylation SILP catalysts were handled and prepared under inert conditions inside a glove box, using standard Schlenk techniques. For the impregnation of the MWCNT and MWCNT-SiO₂ support material, the ionic liquid tetracyclotrihexylphosphonium bis(trifluoromethylsulfonyl)imide [P₁₄₆₆₆][NTf₂] in dichloromethane was added to the support material and stirred for 10 min. Next, a mixture of the precursor Rh(acac)(CO)₂ and the biphephos ligand bpp dissolved in DCM was added and stirred for additional 20 min. The solvent was

then slowly removed under reduced pressure (step 1: 2 h, 40 °C, 900 mbar; step 2: 1 h, 40 °C, <3 mbar) to facilitate the homogeneous coating of the support material, resulting in the average, adjusted degree of pore filling. The resulting SILP materials contained a rhodium loading of $w_{Rh} = 0.2$ wt%, a ligand/Rh ratio of 4 and an ionic liquid loading of $\alpha_{IL} = 10$ vol%.

Catalytic tests in WGS

A continuously operated tubular reactor was used that has been reported previously.²³ The flow scheme of the test rig is given in the ESI (Fig. S4†). For a typical experiment, 0.4 g of the prepared SILP catalyst was placed in the tubular reactor on a glass wool covered frit to keep the fixed bed in place. Following a pressure test, the reactor was heated to the reference temperature of 120 °C under a nitrogen atmosphere. Once the temperature was reached, the rig was switched into bypass mode, and the streams of CO, N₂ and H₂O were adjusted with a partial pressure ratio of $p_{N_2} : p_{CO} : p_{H_2O} = 7 : 1 : 2$ and a total pressure of $p_{tot} = 1$ bar. When the IR-Analyzer (X-STREAM Enhanced XEGP, Emerson) showed stable values, the data logger was started to take reference values for 15 minutes (one data point per 30 seconds) before switching into reactor mode. The temperature of the tubular reactor was varied at constant volume flows between 120 °C and 140 °C in steps of 5 °C. Every set point is kept for 5 hours in which steady-state conditions were reached.

Catalytic tests in hydroformylation

The continuous gas-phase hydroformylation experiments were conducted at 100 °C and 11 bar pressure using a fixed bed reactor set-up (for details see Fig. S5†).²⁴ The syngas flows (33H₂ mL_N min⁻¹, 33 CO mL_N min⁻¹) were regulated by a mass flow controller (Bronkhorst). 1-Butene (0.067 mL min⁻¹) was dosed by a minipump (Smartline Pump 100 by Knauer) equipped with a 10 mL pump head. An additional inert gas flow of helium was applied by a mass flow controller (Bronkhorst) during the start of the reaction (decreased in steps of 25 mL_N min⁻¹ from 100 to 0 mL_N min⁻¹). The gaseous substrate stream was contacted with the SILP catalyst fixed bed (0.124 g SILP + 0.9 g inert Silica 60, 63–200 μm) in a tubular reactor with a residence time of 7 seconds. An on-line gas chromatograph (Bruker 450 GC) monitored the product feed stream with two FID detectors (CP-Wax 52CB, 25 m length, 0.53 mm inner diameter, 2 μm coating for C5–C10 separation; CP-Porabond Q, 25 m length, 0.53 mm inner diameter for C4 separation) and one TCD detector (permanent gases).

The SILP hydroformylation activity is expressed by means of the turnover frequency TOF (in h⁻¹) which is calculated according to eqn (3).

$$TOF = \frac{\dot{n}_{product}}{n_{catalyst}} \quad (3)$$

For SILP WGS the molar flow of product cannot be determined in high accuracy due to a change of the total flow caused by the condensation of water before the dry gas flows through

the online IR-analyzer. Here, the TOF has to be modified according to eqn (4).

$$TOF = \frac{\dot{n}_{substrate} \times X}{n_{catalyst}} \quad (4)$$

The molar flow of substrate is known from the calibrated MFC and the degree of conversion is calculated based on the CO signal from the gas analyzer.

Results and discussion

First, we present the results from the MWCNT microtube fabrication and analysis, as well as the preparation of composite MWCNT-SiO₂ and MWCNT-Al₂O₃ materials. These materials were tested in WGS and hydroformylation, which constitutes the second part of this chapter.

MWCNT microtube fabrication

Producing freestanding MWCNT based microtubes is possible with the production procedure developed by Gendel *et al.*¹⁹ As can be seen in Fig. 3(a–c), the microtubes produced in this work are self-supporting, long and thin hollow fibers. Measurements show that all fibers are above 200 mm in length and have an outside diameter of around 1.7 mm. The outside diameter of the microtube is slightly smaller than the inside diameter of the PP filtration membrane because the microtube shrinks during the drying step.

Field emission scanning electron microscopy (FESEM) allows to evaluate the particle distribution within the microtube wall. The thickness of the microtube wall depends on the filtration time and filtration flux, being in the range of 150–350 microns. Fig. 3d shows the catalyst-free microtube surface structure of pure MWCNTs. Even though there are no particles embedded into the network of MWCNTs, it seems as if some small clusters form beneath the surface. These clusters consist of agglomerated MWCNTs, and they can form dense structures, which also affect the homogeneity in porosity of the MWCNT network as explained in the next section. The number of clusters depends much on the preparation and the corresponding homogeneity of the solution to be filtered.

In comparison to the pure MWCNT microtube from Fig. 3(d), the integration of small particles considerably changes the structure of the microtube. Fig. 4 is an example of a surface and a cross-section view of a 50 wt% MWCNT/50 wt% SiO₂ microtube. The small SiO₂ particles are evenly distributed within the MWCNT network. The same effect is observed for Al₂O₃ particles as well, as can be seen in Fig. S1.†

Particle loading has a strong influence on microtube stability. Mechanically stable, freestanding MWCNT-SiO₂ microtubes can be formed up to a particle loading of 70 wt% of SiO₂ particles. For MWCNT-Al₂O₃ microtubes, it was not possible to increase the particle loading above 50 wt% without breaking the fibers during production. For particle loadings larger than 70 wt% in SiO₂ rich microtubes or 50 wt% in Al₂O₃ rich microtubes, the structures became unstable and some

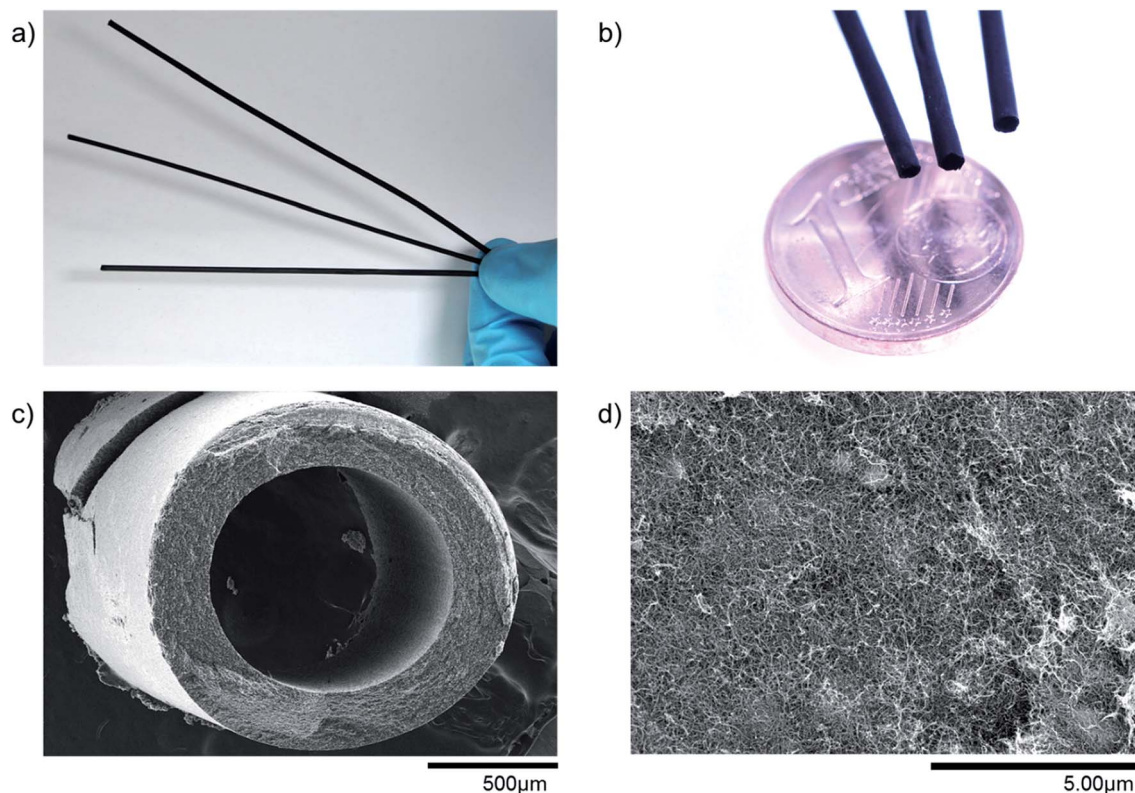


Fig. 3 (a) Photo of freestanding microtubes, (b) photo of three microtubes next to a coin for size reference, (c) cross-section SEM picture of a MWCNT microtube made from 50 wt% MWCNT and 50 wt% SiO₂, (d) FESEM image of the outer surface of a pure MWCNT microtube. Lighter grey spots show clustered MWCNTs. FESEM images were adjusted in contrast and brightness.

samples broke upon removing them from the PP filtrations membranes. Therefore, all results presented in the following were obtained with microtube particle loadings between 0–70 wt% in case of SiO₂ rich microtubes and 0–50 wt% for Al₂O₃ rich microtubes.

The observations regarding MWCNT-microtube stability match well with the work from Keller *et al.*, who discovered that bending strength of MWCNT microtubes reduced significantly with an increase in particle loading.²⁰ A possible improvement

of the MWCNT interconnection, and thus, the stability of the microtube can be achieved through crosslinking of amine-functionalized MWCNT's.²⁵ The crosslinking increased the mechanical stability of buckypaper by more than two-fold, according to Zhang *et al.*,²⁶ and could be tested in follow up work for MWCNT microtubes.

For the SILP impregnation into the porous microtubes, it is necessary to know the pore volume. As mentioned in the catalyst preparation section, it is sufficient to fill only a certain

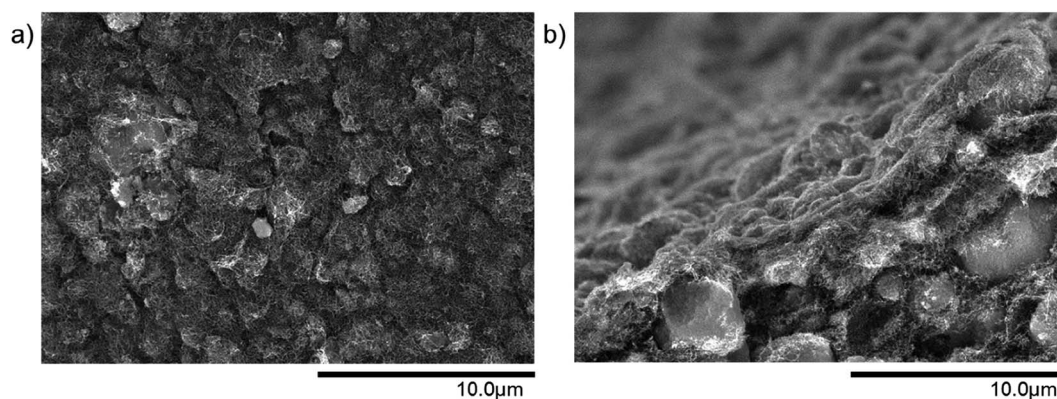


Fig. 4 (a) FESEM image of the outer surface of a mixed MWCNT-SiO₂ microtube. Particle loading of 50 wt% MWCNT/50 wt% SiO₂, (b) FESEM image of the cross-section of a mixed MWCNT-SiO₂ microtube. Particle loading of 50 wt% MWCNT/50 wt% SiO₂. FESEM images were adjusted in contrast and brightness.

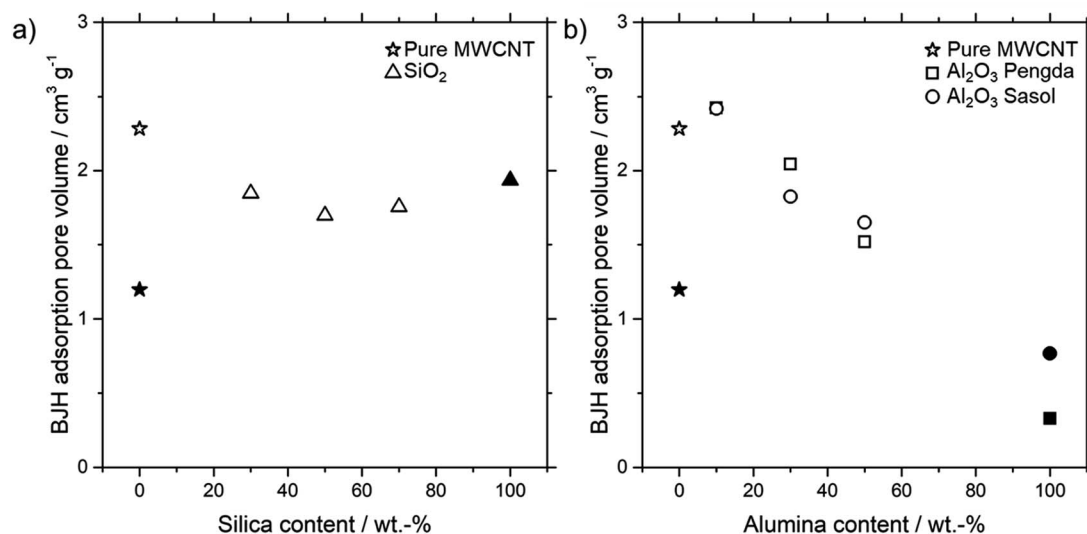


Fig. 5 (a) BJH adsorption pore volume for MWCNT-SiO₂ combinations, (b) BJH adsorption pore volume for MWCNT-Al₂O₃ combinations from different suppliers. Black filled symbols are powders and white symbols are microtubes.

amount of pore volume with SILP solution. Fig. 5 shows the Barrett, Joyner and Halenda (BJH) adsorption pore volumes of different amounts of all three kinds of particles integrated into MWCNT microtubes, as well as the powder forms.

For the SiO₂ particles, the pore volume decreases from a pure MWCNT microtube towards a 50% MWCNT-SiO₂ combination. A further increase of SiO₂ particles increases the pore volume again, towards the SiO₂ powder pore volume. A possible explanation for this behavior is the entanglement of MWCNTs with SiO₂ particles and, resulting from this interaction, the forming of new pores. Contrary to the MWCNT-SiO₂ combination, the pore volume increases slightly for both MWCNT-Al₂O₃ combinations at 10 wt% Al₂O₃, before dropping continuously with higher particle loadings. Again, the entanglement of MWCNT's and particles seems to be a possible reason, which leads to the forming of new pores. A more detailed explanation can be found in the ESI including Fig. S2† of the differential analysis of pore volume depending on particle loading.

Continuous WGS catalysis

The basis for the evaluation of the MWCNT-Al₂O₃ composite materials in WGS SILP was a temperature variation at constant feed flows and compositions. A typical plot of results can be seen in Fig. 6, which summarizes the obtained catalytic values for a SILP catalyst based on pure alumina (Pengda) support material.

After every temperature variation, the temperature was reset to the reference state of 120 °C, to investigate whether the system undergoes deactivation phenomena. The results show that the catalyst promotes stable values at all temperature stages after a start-up period in the first 120 °C-stage. For the sake of clarity and better comparability, every temperature variation experiment is turned into a turnover frequency (TOF) over temperature plot by averaging the measured data of a stable operation regime over a time of 30 minutes within every

temperature stage. By doing so, Fig. 7 is obtained, which shows the same experimental run (Pengda, 5 μm particles) as a TOF-temperature plot. In addition, results from powdered Sasol support (Puralox TM 100/150 UF, 2.5 μm particles) and granulated alumina (Puralox NWa 155, 200–500 μm particles) are shown. From these data it becomes evident that the three systems had a similar activity at each reaction temperature.

Next, we investigated the performance of MWCNT-alumina composite support materials. Different support materials made from varying fractions of MWCNTs and alumina-types (purchased from Pengda and Sasol) were examined. After preparation, the MWCNT material was reduced in length into fragments of approx. 1 mm length each, which were placed into

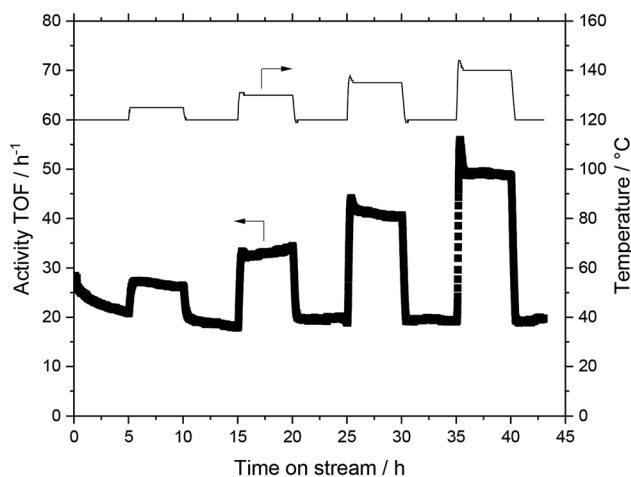


Fig. 6 Catalytic activity (as TOF) as a function of temperature and time for a SILP catalyst based on pure alumina (Pengda) as support material. Reaction conditions: $T = 120\text{--}140$ °C, $p = 1$ bar, precursor = $[\text{Ru}(\text{CO})_3(\text{Cl})_2]$, IL = $[\text{C}_4\text{C}_1\text{C}_1\text{Im}]\text{Cl}$, $m_{\text{SILP}} = 0.4$ g, $w_{\text{Ru}} = 2$ wt%, $\alpha_{\text{IL}} = 34$ vol%, total flow rate = $130.8 \text{ mL}_\text{N} \text{ min}^{-1}$, $\text{H}_2\text{O} : \text{CO} = 2 : 1$.

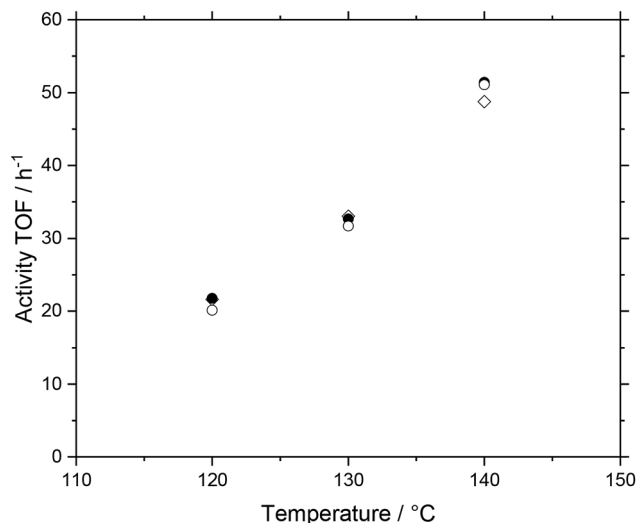


Fig. 7 Catalytic activity (as TOF) as a function of temperature for three SILP catalysts based on powdered alumina Pengda (◇), powdered Puralox TM 100/150 UF (○) and granulated 200–500 μ Puralox NWA 155 (●) as support material. Reaction conditions: $T = 120\text{--}140\text{ }^{\circ}\text{C}$, $p = 1$ bar, precursor = $[\text{Ru}(\text{CO})_3(\text{Cl})_2]_2$, IL = $[\text{C}_4\text{C}_1\text{C}_1\text{Im}]\text{Cl}$, $m_{\text{SILP}} = 0.4$ g, $w_{\text{Ru}} = 2$ wt%, $\alpha_{\text{IL}} = 34$ vol%, total flow rate = 130.8 mL_N min⁻¹, $\text{H}_2\text{O} : \text{CO} = 2 : 1$.

the reactor. The prepared systems had alumina contents of 0 (pure MWCNT), 10, 30, 50 and 100 wt%. In Fig. 8 the results for the composite material based on alumina Pengda are shown; the behavior for Puralox TM 100/150 UF can be found in the ESI (Fig. S6†), which is almost identical. All systems showed a higher activity with higher temperatures following Arrhenius law without undergoing any deactivation over time. This temperature dependency leads to the conclusion that the

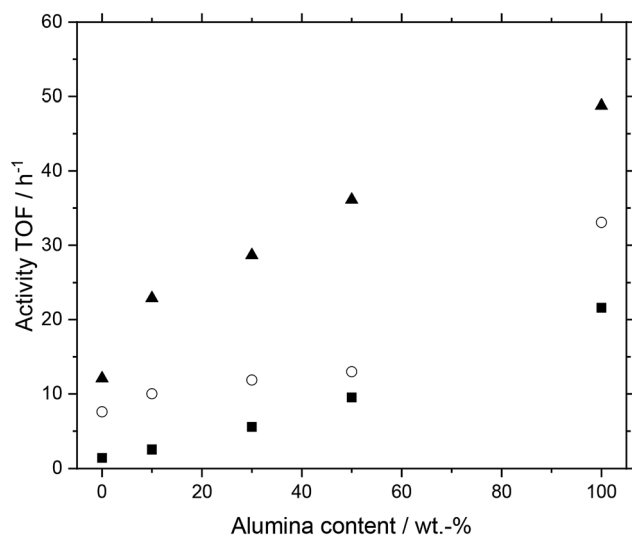


Fig. 8 Catalytic activity (as TOF) as a function of the alumina (Pengda) content in MWCNT-alumina composite support materials. Reaction conditions: $T = 120\text{ }^{\circ}\text{C}$ (filled squares), $130\text{ }^{\circ}\text{C}$ (open circles) and $140\text{ }^{\circ}\text{C}$ (filled triangles), $p = 1$ bar, precursor = $[\text{Ru}(\text{CO})_3(\text{Cl})_2]_2$, IL = $[\text{C}_4\text{C}_1\text{C}_1\text{Im}]\text{Cl}$, $m_{\text{SILP}} = 0.4$ g, $w_{\text{Ru}} = 2$ wt%, $\alpha_{\text{IL}} = 34$ vol%, total flow rate = 130.8 mL_N min⁻¹, $\text{H}_2\text{O} : \text{CO} = 2 : 1$.

support materials themselves are stable at elevated temperatures under reaction conditions. While all systems showed a similar increase in activity with rising temperature, the system with 50 wt% alumina deactivated to a minor degree from 120 to 130 $^{\circ}\text{C}$.

Furthermore, a higher alumina content in the prepared support materials for the catalysts had a positive influence on activity. The higher the alumina content, the higher the activity of the investigated SILP catalyst system. We observe this trend throughout all three plotted temperature stages. The trend can be considered as quasi-linear, which is most prominent at 120 $^{\circ}\text{C}$. All discussed trends can be observed in the catalyst systems using alumina from Sasol as well (see Fig. S6†).

While the WGS catalytic activity did not benefit from incorporating alumina particles in MWCNTs, the tubular geometries that might be accessible by these new composite materials (e.g., hollow fibers, tube bundles) can compensate for the effect of lower activity. On the way to a membrane reactor that would consist of several hundreds of MWCNT hollow fibers, the lower activity would be compensated by the more effective handling of SILP catalysts in combination with separation.

Continuous hydroformylation

In a similar manner as for WGS, we tested the MWCNT-SiO₂ composite supports for gas-phase hydroformylation of 1-butene in a continuous reactor setup. Fig. 9 shows the activity and selectivity over time on stream for a composite support containing 70 wt% MWCNT and 30 wt% SiO₂. For a smoother start-up, especially to avoid high aldol formation, the reaction mixture was diluted with helium. The helium flow was reduced every 80 minutes from 100 to 0 mL_N min⁻¹ in four steps. Next to the TOF as a critical characteristic for catalytic activity, the selectivities for the primary and side products are shown as well as the *n*/iso-selectivity within the aldehyde fraction. This selectivity represents the amount of the desired *n*-pentanal in comparison to all pentanals formed. Side reactions are the hydrogenation to butane, the isomerization to *cis*-2-butene and *trans*-2-butene (combined as isomerization selectivity) as well as the subsequent reaction of *n*-pentanal to 3-hydroxy-2-propylheptanal which can undergo a condensation reaction to form 2-propylhept-2-enal (combined as aldol selectivity).

The SILP catalyst required a long induction period of more than 13 h to reach a stable performance (the first two hours were bypass measurements). The purely silica based SILP catalyst also reached steady-state performance only after 15 h (see Fig. S7†). Interestingly, even after the reactor temperature had stabilized, which took approximately 10 hours, the system was not stable, and the activity kept increasing. After 15 hours, the MWCNT-SiO₂ based SILP catalyst reached a steady state of approximately 1800 h⁻¹ activity, corresponding to 4.8% conversion. The *n*-pentanal selectivity was very high at 99.2%, the total selectivity toward aldehydes stabilized at 64.2% and the isomerization tendency was around 19.4%. Aldol formation as the most problematic side reaction in gas-phase hydroformylation was low during the induction period but increased to a stable plateau of 13.5%. Such behavior hints at an ongoing

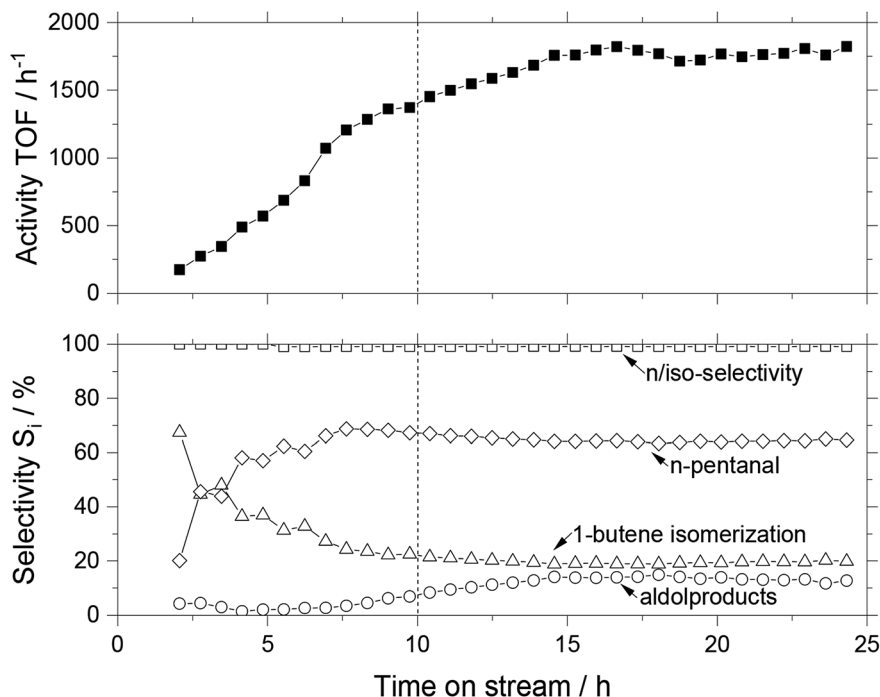


Fig. 9 Gas-phase 1-butene hydroformylation using MWCNT-SiO₂ support (30 wt% SiO₂). Rh-SILP activity (top) is given in turnover frequency TOF (■). Selectivities S_i (bottom) indicate amount of formed *n*-pentanal (◇), 1-butene isomerization (△), aldols (○) and *n*/*iso* selectivity within pentanals (□). Reaction conditions: temperature = 100 °C, total molar flow prior to reactor 3.75 mmol min⁻¹, partial pressures p_{H_2} = 4.75 bar, p_{CO} = 4.62 bar, $p_{1-butene}$ = 1.95 bar, amount of active metal m_{Rh} = 0.45 mg, w_{Rh} = 0.2 wt%, amount of SILP-catalyst m_{SILP} = 0.12 mg, amount of inert silica 60, 70–230 mesh m_{inert} = 0.90 mg, α_{IL} = 10 vol%, IL = [P₁₄₆₆₆][NTf₂], dotted line indicates stable reactor temperature.

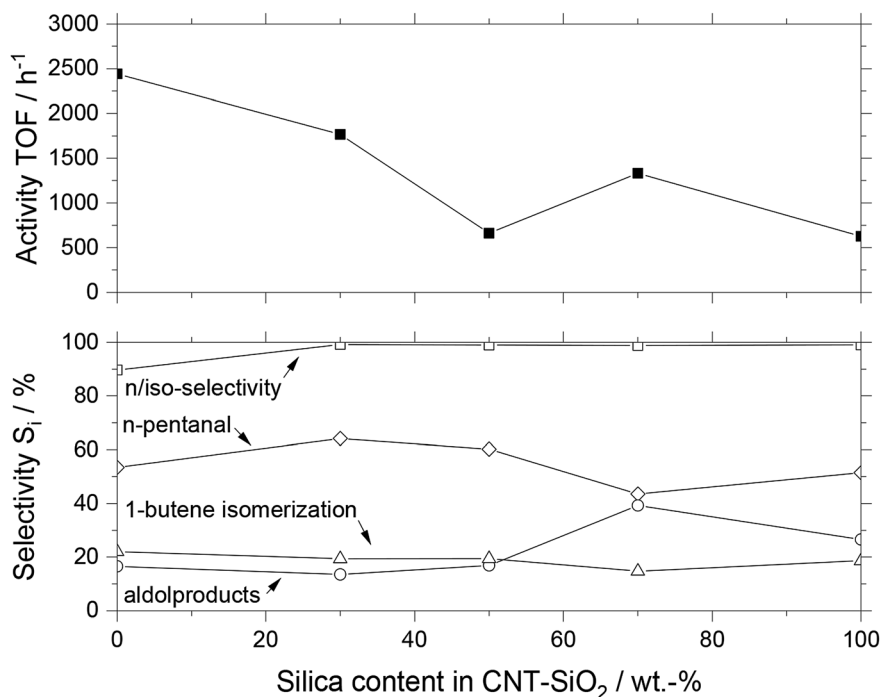


Fig. 10 Gas-phase 1-butene hydroformylation using different MWCNT-SiO₂ supports with varying silica content. Rh-SILP activity (top) is given in turnover frequency TOF (■). Selectivities S_i (bottom) amount of formed *n*-pentanal (◇), 1-butene isomerization (△), aldols (○) and *n*/*iso* selectivity within pentanals (□). Reaction conditions: temperature = 100 °C, total molar flow prior to reactor 3.75 mmol min⁻¹, partial pressures p_{H_2} = 4.75 bar, p_{CO} = 4.62 bar, $p_{1-butene}$ = 1.95 bar, amount of active metal m_{Rh} = 0.45 mg (0.27 mg for 70% silica), w_{Rh} = 0.2 wt%, amount of SILP-catalyst m_{SILP} = 0.12 mg (0.077 mg for 70% silica), amount of inert silica 60, 70–230 mesh m_{inert} = 0.90 mg, α_{IL} = 10 vol%, IL = [P₁₄₆₆₆][NTf₂].

process of restructuring of the ionic liquid film due to changes in the wettability when substrates and products dissolve.¹⁶ Especially the change in aldol content in the effluent stream of the reactor is a strong indication for the restructuring process. To compare different MWCNT-SiO₂ compositions, we calculated the average values of the steady state for all selectivities, as well as the turnover frequency (see Fig. 10). Since the sample consisting of pure MWCNT material showed a steady deactivation throughout the observed period (see Fig. S8†), the initial TOF values were considered.

When comparing the MWCNT-SiO₂ composite materials with pure MWCNT and SiO₂, it becomes obvious that the SiO₂ lowers the overall activity compared to pure MWCNT. The pure silica-based SILP catalyst had a TOF of 625 h⁻¹, while the pure MWCNT based SILP was 400% more active around 2440 h⁻¹. The activity of composite materials having different ratios between MWCNT and SiO₂ gradually declined with increasing SiO₂ content. The selectivity pattern did not reveal a clear trend, with all MWCNT-SiO₂ based catalysts yielding *n*/*iso*-selectivity (96 ± 4%), moderate toward *n*-pentanal (55 ± 7%), and isomerization (19 ± 2%). The aldol content varied significantly between the different catalysts, being 22 ± 9% on average. Especially higher amounts of silica content show an increased aldol and therefore decreased *n*-pentanal formation. We explain this trend with the higher amount of silanol groups on the surface, which enhance the acid/base-catalyzed aldol formation. Calcining the silica at an elevated temperature of 600 °C for several hours reduces the number of surface silanol groups significantly.^{5a} Due to a combustion temperature in the range of 400–500 °C of the MWCNT microtubes, calcining at 600 °C was not possible. The combustion temperature of MWCNT microtubes in air was analyzed with TGA measurements (see Fig. S3†).

Conclusion

Improving large-scale chemical reactions to reduce emissions and costs is a significant challenge of today's society. On the one hand, catalyst immobilization *via* SILP technology offers an opportunity to combine the advantages of homogeneous and heterogeneous catalytic reactions. On the other hand, tunable MWCNT based microtubes can serve as freestanding support materials for catalytic reactions and structure the inside of a reactor. This can lead to avoiding high pressure drops or packing problems, as they occur, *e.g.*, in packed bed reactors as well as to better control of mass and heat transport inside the reactor. In this work, the SILP platform was integrated into a new tubular geometry based on MWCNT. The ability to tune microtubes with porous particles, which are known for their good SILP applicability, is advantageous for incorporating the SILP system into structured supports and reactors.

The experiments showed that the reaction performance in the WGS reaction is lower for Al₂O₃ particle integrated microtubes compared to pure Al₂O₃ powder. Nonetheless, the combined support shows stable and selective behavior. The catalytic activity of MWCNT microtubes for the hydroformylation reaction is very high for pure MWCNT microtubes and decreases for higher SiO₂ contents. However, the catalytic

stability is low if the materials are not adequately calcined, which is difficult, because of thermal instability of MWCNTs above 600 °C.

WGS and hydroformylation of 1-butene are two promising case studies, which are part of the ROMEO project, targeting the development of SILP membrane reactor systems.²⁷ The technology to combine SILP and tunable MWCNT based microtubes could be expanded and used for other chemical reactions. Hydroformylation of smaller olefins (*e.g.* propene) is feasible, while for higher olefins (*e.g.* hexenes or octenes) the pore condensation inside the monolithic structure can hamper the overall efficiency. Next, we aim to apply molecular selective membranes on the microtube surface: a self-supporting reaction system combined with a membrane to separate products *in situ* would be a significant step towards process intensification.

Conflicts of interest

There are no conflicts to declare.

Acknowledgements

The authors gratefully acknowledge financial support from the European Commission within the Horizon2020-SPIRE project ROMEO (grant agreement number 680395). Furthermore, the authors want to thank Heike Zander, for her support in the MWCNT-microtube production.

References

- 1 *Applied Homogeneous Catalysis with Organometallic Compounds*, ed. B. Cornils, W. A. Herrmann, M. Beller and R. Paciolo, Wiley-VCH, Weinheim, 2017.
- 2 *12 Design Principles of Green Chemistry*, ACS Green Chemistry Institute, <http://www.acs.org/greenchemistry>, accessed May 2019.
- 3 *Multiphase Homogeneous Catalysis*, ed. B. Cornils, W. A. Herrmann, I. T. Horváth, W. Leitner, S. Mecking, H. Olivier-Bourbigou and D. Vogt, Wiley-VCH, Weinheim, 2005.
- 4 *Supported Ionic Liquids – Fundamentals and Applications*, ed. R. Fehrmann, A. Riisager and M. Haumann, Wiley-VCH, Weinheim, 2014.
- 5 (a) A. Riisager, R. Fehrmann, S. Flicker, R. van Hal, M. Haumann and P. Wasserscheid, *Angew. Chem., Int. Ed.*, 2005, **44**, 815; (b) A. Riisager, R. Fehrmann, M. Haumann and P. Wasserscheid, *Eur. J. Inorg. Chem.*, 2006, 695; (c) A. Riisager, R. Fehrmann, M. Haumann and P. Wasserscheid, *Top. Catal.*, 2006, **40**, 91.
- 6 S. Werner, N. Szesni, R. W. Fischer, M. Haumann and P. Wasserscheid, *Phys. Chem. Chem. Phys.*, 2009, **11**, 10817.
- 7 J. Marinkovic, A. Riisager, R. Franke and M. Haumann, *Ind. Eng. Chem. Res.*, 2019, **58**, 2409.
- 8 G. Jacobs and B. H. Davis, *Catalysis*, 2007, **20**, 122.
- 9 R. M. Laine and E. J. Crawford, *J. Mol. Catal.*, 1988, **44**, 357.
- 10 X. Cheng, Z. Shi, N. Glass, L. Zhang, J. Zhang, D. Song, Z.-S. Liu, H. Wang and J. Shen, *J. Power Sources*, 2007, **165**, 739.

- 11 M. Appl, Ammonia, 3. Production Processes, in *Ullmann's Encyclopedia of Industrial Chemistry*, Wiley-VCH, Weinheim, 2012.
- 12 S. Werner, N. Szesni, M. Kaiser, R. W. Fischer, M. Haumann and P. Wasserscheid, *ChemCatChem*, 2010, 2, 1399.
- 13 M. Jakuttis, A. Schönweiz, R. Franke, K.-D. Wiese, M. Haumann and P. Wasserscheid, *Angew. Chem., Int. Ed.*, 2011, 50, 4492.
- 14 M. Haumann, M. Jakuttis, R. Franke, A. Schönweiz and P. Wasserscheid, *ChemCatChem*, 2011, 3, 1822.
- 15 A. Riisager, R. Fehrmann, M. Haumann, B. S. K. Gorle and P. Wasserscheid, *Ind. Eng. Chem. Res.*, 2005, 44, 9853.
- 16 (a) A. Schönweiz, J. Debuschewitz, S. Walter, R. Wölfel, H. Hahn, K. M. Dyballa, R. Franke, M. Haumann and P. Wasserscheid, *ChemCatChem*, 2013, 5, 2955; (b) A. Kaftan, A. Schönweiz, I. Nikiforidis, W. Hieringer, K. M. Dyballa, R. Franke, A. Görling, J. Libuda, P. Wasserscheid, M. Laurin and M. Haumann, *J. Catal.*, 2015, 321, 32.
- 17 A. Weiß, M. Munoz, A. Haas, F. Rietzler, H.-P. Steinrück, M. Haumann, P. Wasserscheid and B. J. M. Etzold, *ACS Catal.*, 2016, 6, 2280.
- 18 A. Weiß, M. Giese, M. Lijewski, R. Franke, P. Wasserscheid and M. Haumann, *Catal. Sci. Technol.*, 2017, 7, 5562.
- 19 Y. Gendel, O. David and M. Wessling, *Carbon*, 2014, 68, 818.
- 20 L. Keller, B. Ohs, L. Abduly and M. Wessling, *Chem. Eng. J.*, 2019, 359, 476.
- 21 M. Jakuttis, Dissertation, Friedrich-Alexander-Universität Erlangen-Nürnberg, 2013.
- 22 E. Barrett, L. Joyner and P. Halenda, *J. Am. Chem. Soc.*, 1951, 73, 373.
- 23 S. Werner, Dissertation, Friedrich-Alexander-Universität Erlangen-Nürnberg, 2011.
- 24 A. Schönweiz, Dissertation, Friedrich-Alexander-Universität Erlangen-Nürnberg, 2014.
- 25 O. Zabihi, M. Ahmadi, M. Bagherjeri and M. Naebe, *RSC Adv.*, 2015, 98693.
- 26 J. Zhang, D. Jiang, H. Peng and F. Qin, *Carbon*, 2013, 63, 125.
- 27 <http://www.romeo-h2020.eu/>, accessed June 2019.