

RESEARCH NOTE

Open Access



ER stress regulates alkaline phosphatase gene expression in vascular smooth muscle cells via an ATF4-dependent mechanism

Malgorzata Furmanik^{1,2} and Catherine M. Shanahan^{1*} 

Abstract

Objective: Vascular calcification is the deposition of hydroxyapatite crystals in the blood vessel wall. Osteogenic differentiation of vascular smooth muscle cells (VSMCs) plays a key role in this process. Increased expression of alkaline phosphatase (ALP) occurs in some in vitro models of VSMC calcification and is thought to be crucial for mineralization, however, little is known about the transcriptional regulation of ALP in VSMCs. Recently, ALP upregulation was shown to coincide with endoplasmic reticulum (ER) stress-mediated vascular calcification, specifically with expression of the transcription factor ATF4. As no direct links between ALP expression and ER stress have previously been demonstrated in VSMCs, the aim of this study was to investigate whether ATF4 interacts directly with the ALP promoter.

Results: The present study shows that ALP mRNA and activity were significantly increased by ER stress treatment of human primary VSMCs in vitro and that this was ATF4-dependent. Bioinformatics analysis predicted two ATF4 binding sites in ER-stress responsive regions of the ALP promoter (−3631 to −2048 bp from the first intron). However, we found that ATF4 does not bind within this fragment of the ALP promoter region.

Keywords: Alkaline phosphatase, ATF4, Promoter, Vascular smooth muscle cell, Endoplasmic reticulum stress

Introduction

Vascular calcification is the deposition of hydroxyapatite crystals in the blood vessel wall [1, 2]. The presence of vascular calcification results in vascular stiffness and increased risk of cardiovascular and all-cause mortality. Vascular smooth muscle cells (VSMCs) play a key role in regulating vascular calcification via processes that have also been implicated in bone formation [3] including apoptosis [4], release of exosomes [5], loss of calcification inhibitors [6] and osteogenic differentiation [7].

Alkaline phosphatase (ALP, TNAP, ALPL), a key inducer of mineralization in bone, catalyses dephosphorylation of pyrophosphate resulting in inactivation of this calcification inhibitor and providing phosphate ions for hydroxyapatite crystal formation. ALP is ubiquitously

expressed in tissues and increased levels in serum and the vasculature have been linked to vascular calcification [8, 9]. Increased expression of ALP also occurs in some in vitro models of VSMC calcification where it is thought to be crucial for mineralisation [10–12]. Previous studies identified transcription factor binding motifs on the human ALP promoter (TATA box, Sp1 binding site [13], vitamin D response element-like motifs, TATA boxes, E-box-like sequences, Sp1 binding site [14]) and mouse promoter (enhancer sequence and E-box [15]). Additionally, several transcription factors (DIF-1 [16], forkhead transcription factor FKHR [17], Dlx5 [18] and p107 retinoblastoma family transcription factor [19]) have been shown to bind the ALP promoter and regulate ALP expression in osteoblasts. Despite this, little is known about the regulation of this enzyme in VSMCs.

The endoplasmic reticulum (ER) is an organelle where secreted and transmembrane proteins are folded and mature. ER stress occurs when the influx of unfolded proteins to the ER is larger than its capacity to fold them,

*Correspondence: cathy.shanahan@kcl.ac.uk

¹ Cardiovascular Division, James Black Centre, King's College London, 125 Coldharbour Lane, London SE5 9NU, UK

Full list of author information is available at the end of the article



resulting in activation of a signalling pathway called the unfolded protein response (UPR) [20]. The UPR is mediated by ER stress transducers: IRE1, ATF6 and PERK. Each of these transducers activates a distinct signalling pathway, which together comprise the UPR. Transcription factor ATF4 is preferentially translated when PERK is activated. Importantly, ER stress and the UPR have been shown to be crucial for bone development [21–25]. More recently, ALP upregulation has been shown to coincide with ER stress-mediated vascular calcification and ALP expression and activity levels have been shown to be ATF4-dependent in calcifying VSMCs [11, 12, 26, 27]. Therefore, in the present study we set out to investigate whether there is a direct interaction of ATF4 with the ALP promoter in response to ER stress.

Main text

Materials and methods

Expanded “Materials and Methods” are available in Additional file 1.

Cell culture and treatments

Human primary VSMCs were of aortic origin, collected from an adult donor with local ethics committee approval (Cambridge Local Research Ethics Committee LREC 97/084), characterised and archived in the laboratory. All human materials were handled in compliance with the Human Tissue Act (2004, UK). Cells were treated with 0.2 µg/ml thapsigargin (TG, Sigma, T9033) or 0.4 µg/ml tunicamycin (TM, Sigma, T7765). SiRNA gene knock-down was carried out using HiPerfect (Qiagen) and 3 pmol siRNA oligonucleotide smartpool (GE Dharmacon).

Gene expression analysis

Gene expression was analysed with quantitative real time PCR (ALP F: ACGAGCTGAACAGGAACAACGT R: CACCAGCAAGAAGAAGCCTTTG, ATF4 F: CAA CAACAGCAAGGAGGATGCCTT R: TGTCATCCA ACGTGGTCAGAAGGT, GAPDH F: CGACCACTT TGTC AAGCTC R: CAAGGGTCTACATGGCAAC) and western blotting (anti-ATF4, Santa Cruz, sc-200 and anti-Rabbit IRDye680 RD, Li-Cor, 926-68071).

Alkaline phosphatase activity assay

ALP activity was measured in cell lysates colorimetrically at 405 nm using pNPP substrate (Sigma), normalised to protein concentration and expressed as µM of pNP generated per minute.

Promoter analysis

The sequence corresponding to the –122 to –4556 (counting from the first nucleotide of the initiation codon) of the ALP promoter was analysed with

Matinspector (Genomatix) for the presence of transcription factor binding sites. ALP promoter constructs [14] and pRL-TK renilla luciferase vector (Promega) were transfected into VSMCs using Lipofectamine LTX. Luciferase assays were carried out using the Dual-Luciferase Reporter Assay kit (Promega). DNA binding assays using nuclear extracts were performed as described previously [28], using biotinylated forward and normal reverse primers (F: GGAGTGTAGTGGCGTGATCT, R: GCA ATAGAGTGGGACCCTGT).

Mass spectrometry

Samples were analysed using liquid chromatography–tandem mass spectrometry (LC–MS/MS). Raw mass spectrometry data were analysed in Proteome Discoverer (ThermoScientific; v1.3.0.339) utilising the Mascot database. Samples were searched against Uniprot database to identify proteins.

Data analysis

All results represent 3 independent experiments, unless stated otherwise. Graphs show mean with SEM. Where appropriate t-tests or one way ANOVA with Tukey’s or Dunnett’s post hoc tests were performed. Statistical significance is indicated with asterisks: * denotes p between 0.05 and 0.01, ** denotes p between 0.01 and 0.001, *** denotes p < 0.001.

Results

ALP expression and activity are ATF4-dependent

ALP mRNA levels were upregulated in VSMCs treated with ER stress inducers tunicamycin (TM) and thapsigargin (TG) (Fig. 1a). ER stress activation was confirmed by western blotting for ER chaperones Grp78 and Grp94 (Fig. 1c, d). ALP activity was significantly increased (twofold) by tunicamycin treatment, but did not change with thapsigargin treatment (Fig. 1b), suggesting only tunicamycin triggered signalling events that lead to the activation of the enzyme.

SiRNA knock-down of IRE1, PERK and ATF6 caused small, but insignificant decreases in ALP expression. In contrast, knock-down of ATF4 caused a twofold decrease in ALP mRNA expression (Fig. 1e, f) corresponding to a decrease in ALP activity (Fig. 1g). ATF4 knock-down also blocked the increase in ALP activity induced by tunicamycin but had no effect on activity at baseline or in thapsigargin-treated cells.

ER stress induces ALP promoter activity

To determine whether ALP promoter activity was regulated by ER stress, luciferase assays were performed with 10 constructs containing fragments of the 5′-upstream region of the human ALP gene

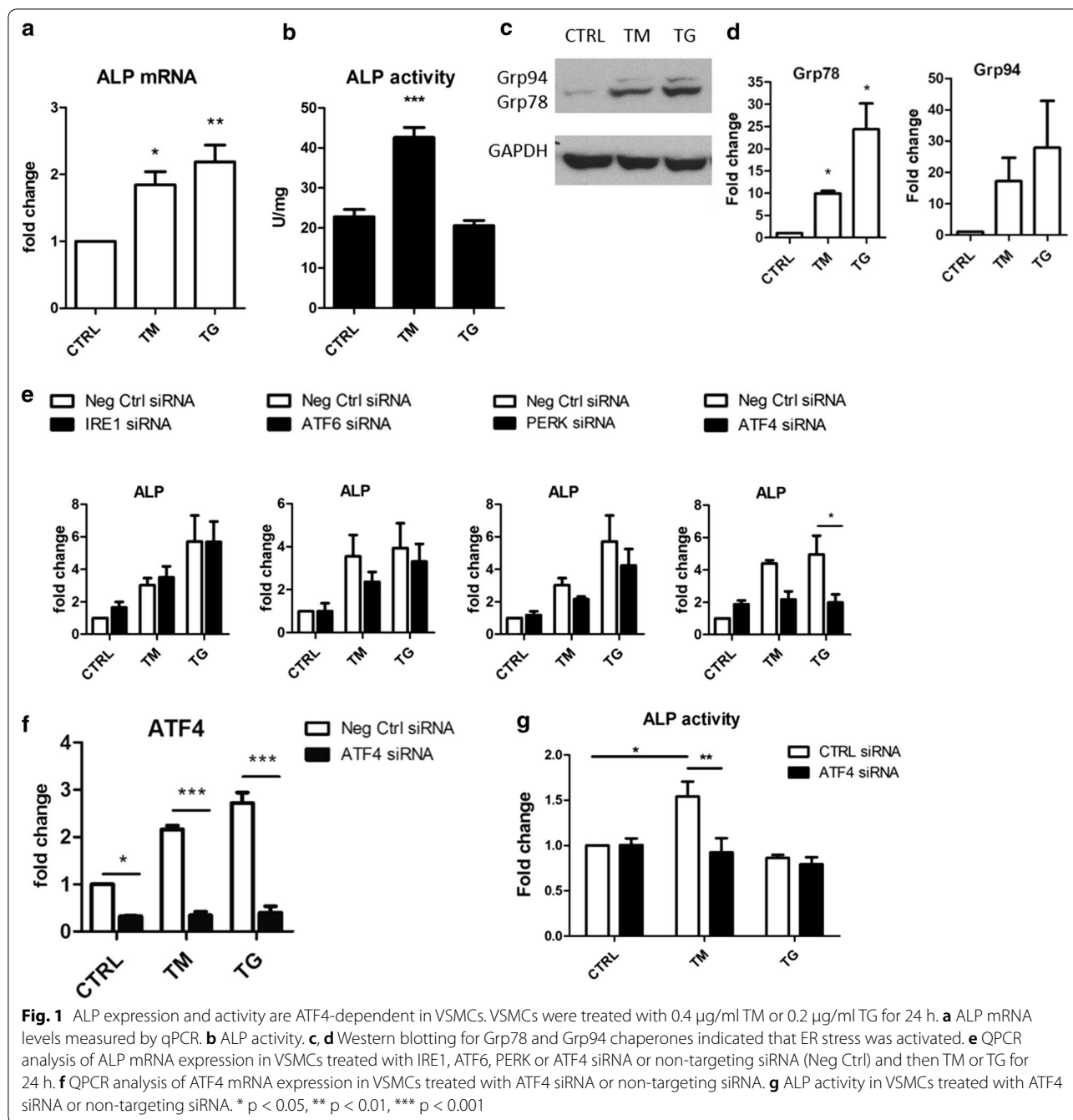


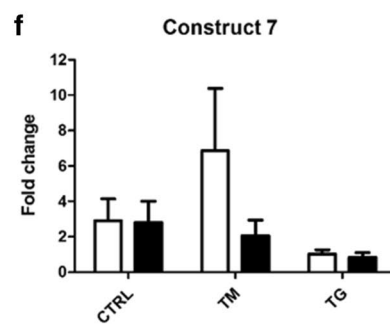
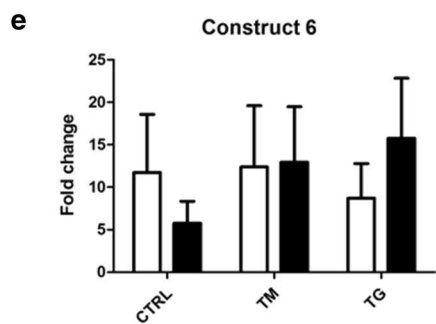
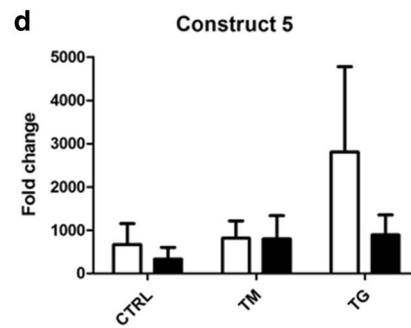
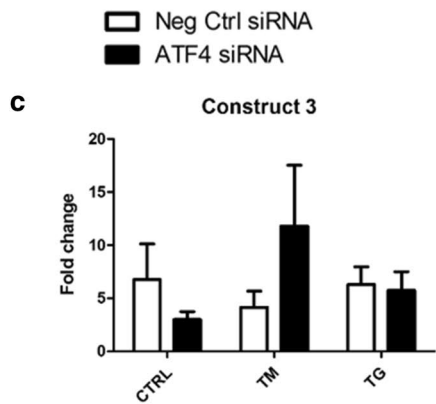
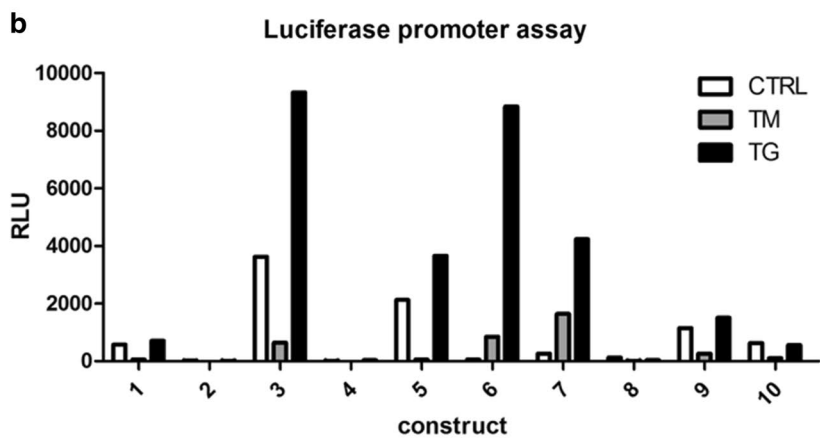
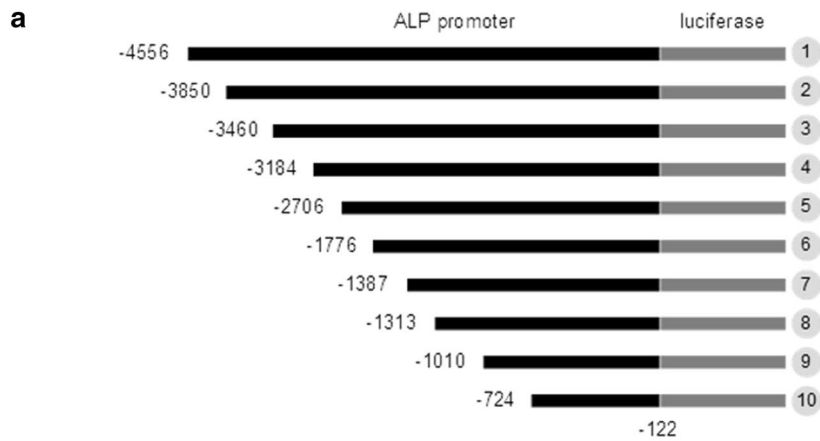
Fig. 1 ALP expression and activity are ATF4-dependent in VSMCs. VSMCs were treated with 0.4 $\mu\text{g/ml}$ TM or 0.2 $\mu\text{g/ml}$ TG for 24 h. **a** ALP mRNA levels measured by qPCR. **b** ALP activity. **c, d** Western blotting for Grp78 and Grp94 chaperones indicated that ER stress was activated. **e** QPCR analysis of ALP mRNA expression in VSMCs treated with IRE1, ATF6, PERK or ATF4 siRNA or non-targeting siRNA (Neg Ctrl) and then TM or TG for 24 h. **f** QPCR analysis of ATF4 mRNA expression in VSMCs treated with ATF4 siRNA or non-targeting siRNA. **g** ALP activity in VSMCs treated with ATF4 siRNA or non-targeting siRNA. * $p < 0.05$, ** $p < 0.01$, *** $p < 0.001$

spanning from -122 to -4556 (Fig. 2a, the full annotated sequence can be found in Additional file 1: Figure S1). Results showed that constructs 1, 3, 5, 6, 7, 9

and 10 contained regions of the ALP promoter that were transcriptionally active in VSMCs and luciferase was activated further in constructs 3, 5, 6 and 7

(See figure on next page.)

Fig. 2 ALP promoter activity in VSMCs in response to ER stress and ATF4 knock-down. **a** Schematic showing ALP promoter constructs for luciferase assay. Construct 1 is the full length fragment, constructs 2–10 were derived by deleting increasing portions of the full length. Based on [14]. **b** Activity of luciferase expressed from ALP promoter constructs in VSMCs, $n = 1$. VSMCs were transfected with constructs for 24 h and then treated with 0.4 $\mu\text{g/ml}$ TM or 0.2 $\mu\text{g/ml}$ TG for 24 h. **c–f** Activity of luciferase expressed from ALP promoter constructs 3, 5, 6 and 7 in VSMCs treated with ATF4 siRNA or non-targeting siRNA, $n = 3$



by thapsigargin treatment, and construct 6 and 7 also by tunicamycin (Fig. 2b).

To examine whether ATF4 plays a direct role in activation of these responsive fragments luciferase assays were performed with simultaneous ATF4 siRNA knock-down. Despite achieving consistent knock-down, the results of the luciferase assays were inconclusive with no statistically significant differences (Fig. 2c–f).

ALP promoter contains ER stress-related transcription factor binding sites

Transcription is regulated by both positive and negative factors and based on the luciferase assays it was possible to infer which sequences activate (enhancers) and which suppress (silencers) transcription of the ALP promoter (Fig. 3b). Potential silencers were present in fragments 2, 4 and 8, surrounded by sequences that activate transcription while the promoter fragment shared by constructs 3–7 contained a sequence that was highly active in VSMCs and inducible by ER stress.

To examine known ER stress responsive consensus binding sites within the ALP promoter bioinformatics analysis with Genomatix MatInspector was performed. Several binding sites for ATF6, ATF4, CHOP and XBP1 were predicted in the full length sequence Fig. 3a and these sites were mapped onto the luciferase constructs (Fig. 3b). ATF6, XBP1, and CREB/ATF binding sequence were scattered in activator regions of various constructs. Two ATF4 binding sites were predicted, one localised in a silencer sequence and one in an enhancer, in a region encompassed by constructs 1–5. However, there was no clear enrichment of these sequences in fragments 3 and 7 that were ER stress responsive. This suggests that indirect interactions of ER stress-related transcription factors with other, directly binding, factors are responsible for increased activity in ER stress conditions.

ATF4 does not bind the ALP promoter

The promoter fragment containing both potential ATF4 binding sites (Fig. 3a, arrowed) was amplified using biotinylated primers, conjugated onto magnetic streptavidin beads and incubated with VSMC nuclear extracts. Western blotting of eluted proteins did not detect ATF4 (Fig. 3c) despite its presence in the start lane, suggesting ATF4 did not bind.

For more sensitive detection we subjected eluted proteins to liquid chromatography–mass spectrometry (LC–MS/MS) (Additional file 1: Figure S2). A thapsigargin-treated nuclear extract was used for the proteomic experiment to increase the chance of finding protein–ALP

promoter interactions relevant to ER stress. The mass spectrometry analysis identified 447 different proteins with 95% or more probability, for which more than 1 peptide was present, in both lanes. Results indicate that no ATF4 was detected (Additional file 2) nor were any of the other predicted ER stress-related transcription factors.

Discussion

This study shows that ALP mRNA and activity were significantly increased by ER stress in human primary VSMCs in vitro. siRNA knock-down showed that ATF4 is required for ER stress-induced ALP expression and luciferase reporter assays identified regions of the ALP promoter responsive to ER stress. Bioinformatics predicted two ATF4 binding sites within these fragments however DNA binding assays and MS failed to show ATF4 binding, suggesting ATF4 regulation is not via direct promoter interactions.

There are several possible explanations for this: (1) bioinformatics predictions may not be accurate, (2) ATF4 may not be a direct regulator of ALP expression, but could act via other, unknown downstream factors that were downregulated after ATF4 knock-down and (3) the ATF4-responsive element could be located outside the examined promoter fragment [29]. This is supported by the fact that tunicamycin caused an increase in ALP mRNA expression and enzyme activity levels, but did not consistently induce promoter activity.

Our results also suggest that tunicamycin and thapsigargin regulate ALP via different pathways and this is in line with studies showing that in VSMCs these two compounds can have differential effects on gene expression [30].

The proteomics results also suggest indirect regulation by ER stress. The responsive fragments contained a TCF/LEF binding site (data not shown, [16]) and β -catenin, which was identified by proteomics, activates transcription by forming a complex with TCF and LEF [31, 32]. β -Catenin belongs to the Wnt signalling pathway crucial for bone formation, and has been implicated in vascular calcification [33]. Importantly, ER stress has been shown to activate β -catenin in embryonic stem cells [34] suggesting that β -catenin could be a regulator of ALP expression in VSMCs in response to ER stress but this requires further testing.

Limitations

The main limitation of this study is the lack of consistent data for ALP promoter activity after ATF4 knock-down. However, using a direct approach of proteomics

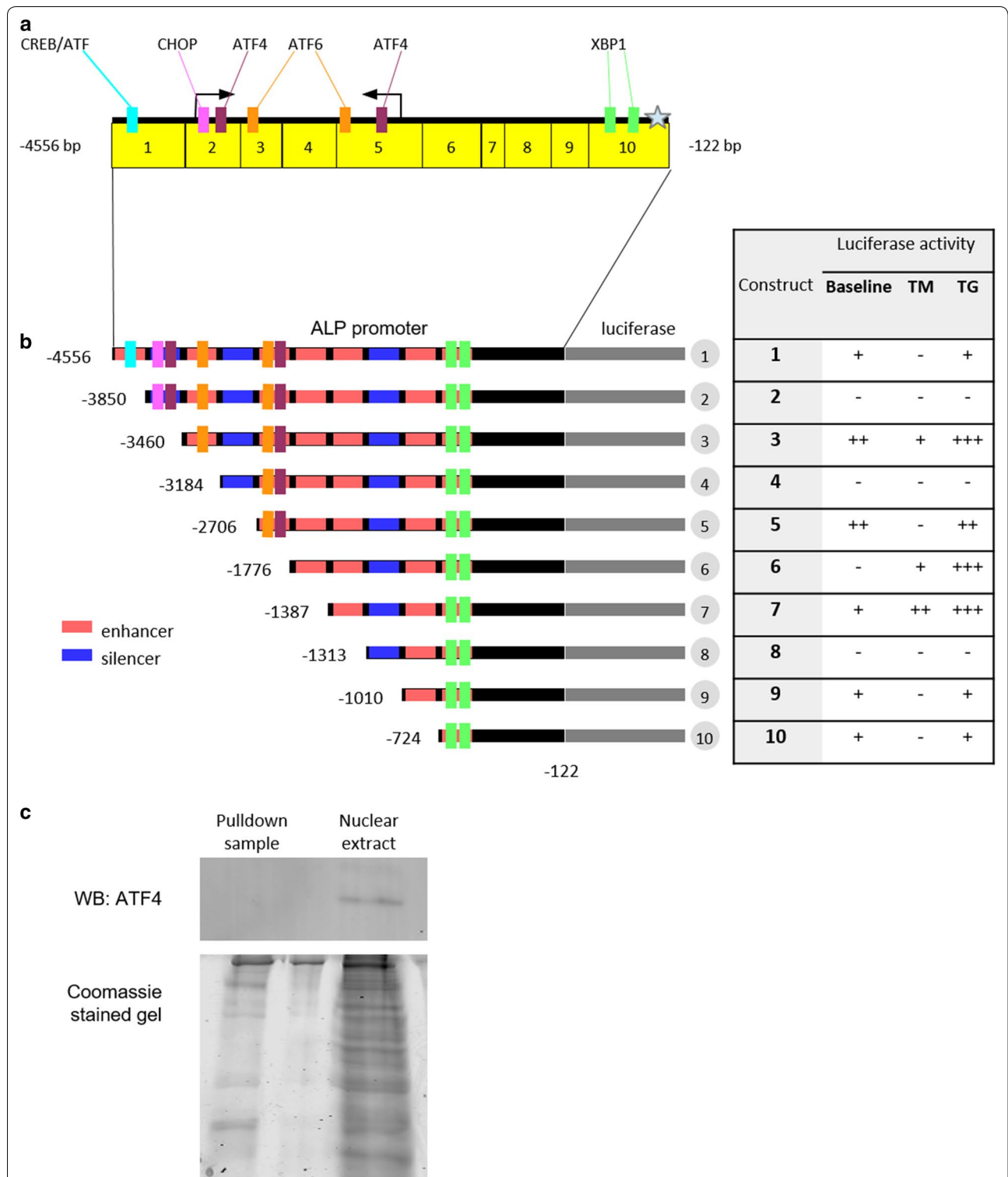


Fig. 3 ATF4 does not bind the ALP promoter in VSCMs. **a** ER stress-related transcription factor binding sites mapped to the ALP promoter. **b** Schematic of ALP promoter constructs with potential regions activating (red) and inhibiting (blue) transcription in VSCMs, based on luciferase assay results. '+' denotes degrees of activation, '-' denotes lack of promoter activity. **c** The fragment of the ALP promoter containing potential ATF4 binding sites was amplified using biotinylated primers and conjugated onto magnetic streptavidin beads. The beads were then incubated with VSMC nuclear extracts, washed and proteins were eluted off the DNA and analysed by Western blotting. Coomassie gel demonstrates that even though ATF4 was not detected in the pull-down sample, other proteins were present. N = 3, figure shows representative images

we did not find ATF4 binding the examined fragment of ALP promoter. It is also possible that ATF4 is a regulator of the ALP promoter, but our analysis did not encompass the right region of the promoter.

Additional files

Additional file 1: Figure S1. The sequence of the ALP promoter with ER stress-related transcription factor binding sites. **Figure S2.** Coomassie gel used for proteomic analysis of proteins bound to the ALP promoter. Full description of materials and methods.

Additional file 2. Proteomics results. List of proteins, that bind the ALP promoter, identified by mass spectrometry. Nuclear extracts were bound and eluted off the biotinylated DNA on beads and analysed by LC-MS/MS. Raw mass spectrometry data were analysed in Proteome Discoverer (ThermoScientific; v1.3.0.339) utilising the Mascot database. Samples were searched against Uniprot database to identify proteins bound to the ALP promoter and compared with proteins that nonspecifically bound to unconjugated beads.

Abbreviations

ALP: alkaline phosphatase; ATF4: activating transcription factor 4; ATF6: activating transcription factor 6; CHOP: C/EBP-homologous protein; ER: endoplasmic reticulum; IRE1: inositol-requiring enzyme 1; LC-MS/MS: liquid chromatography–tandem mass spectrometry; PERK: PRKR-Like Endoplasmic Reticulum Kinase; pNPP: p-nitrophenyl phosphate; TCF/LEF: T cell-specific transcription factor 1-alpha/lymphoid enhancer binding factor 1; TG: thapsigargin; TM: tunicamycin; UPR: unfolded protein response; VSMC: vascular smooth muscle cell; XBP1: X-box binding protein 1.

Authors' contributions

MF designed the experiments, performed all experiments, analysed data and wrote the paper. CS designed and supervised the study and wrote the paper. Both authors discussed the results and commented on the manuscript. Both authors read and approved the final manuscript.

Author details

¹ Cardiovascular Division, James Black Centre, King's College London, 125 Coldharbour Lane, London SE5 9NU, UK. ² Present Address: Department of Biochemistry, CARIM-Cardiovascular Research Institute Maastricht, Maastricht University, Maastricht, The Netherlands.

Acknowledgements

Not applicable.

Competing interests

The authors declare that they have no competing interests.

Availability of data and materials

The datasets generated and/or analysed during the current study are available from the corresponding author on reasonable request.

Consent to publish

Not applicable.

Ethics approval and consent to participate

The study was conducted with full ethical approval. Human aortic VSMCs were isolated with local ethics committee approval (Cambridge Local Research Ethics Committee LREC 97/084). Vascular tissue was collected from deceased organ donors, the next of kin gave written informed consent.

Funding

This work was funded by the British Heart Foundation, Ph.D. Studentship FS/11/9/28695.

Publisher's Note

Springer Nature remains neutral with regard to jurisdictional claims in published maps and institutional affiliations.

Received: 16 April 2018 Accepted: 6 July 2018

Published online: 16 July 2018

References

- Demer LL, Tintut Y. Vascular calcification: pathobiology of a multifaceted disease. *Circulation*. 2008;117(22):2938–48.
- Kapustin AN, Shanahan CM. Calcium regulation of vascular smooth muscle cell-derived matrix vesicles. *Trends Cardiovasc Med*. 2012;22(5):133–7.
- Karsenty G, Kronenberg HM, Settembre C. Genetic control of bone formation. *Annu Rev Cell Dev Biol*. 2009;25:629–48.
- Proudfoot D, Skepper JN, Hegyi L, Bennett MR, Shanahan CM, Weissberg PL. Apoptosis regulates human vascular calcification: in vitro evidence for initiation of vascular calcification by apoptotic bodies. *Circ Res*. 2000;87:1055–62.
- Kapustin AN, Chatrou ML, Drozdov I, Zheng Y, Davidson SM, Soong D, et al. Vascular smooth muscle cell calcification is mediated by regulated exosome secretion. *Circ Res*. 2015;116(8):1312–23.
- Sage AP, Tintut Y, Demer LL. Regulatory mechanisms in vascular calcification. *Nat Rev Cardiol*. 2010;7(9):528–36.
- Shanahan CM, Cary NRB, Salisburry JR, Proudfoot D, Weissberg PL, Edmonds ME. Medial localization of mineralization-regulating proteins in association with Monckeberg's sclerosis. *Circulation*. 1999;100:2168–76.
- Kalantar-Zadeh K, Kuwae N, Regidor DL, Kovsedy CP, Kilpatrick RD, Shinaberger CS, et al. Survival predictability of time-varying indicators of bone disease in maintenance hemodialysis patients. *Kidney Int*. 2006;70(4):771–80.
- Drechsler C, Verduijn M, Pilz S, Krediet RT, Dekker FW, Wanner C, et al. Bone alkaline phosphatase and mortality in dialysis patients. *Clin J Am Soc Nephrol*. 2011;6(7):1752–9.
- Shioi A, Nishizawa Y, Jono S, Koyama H, Hosoi M, Morii H. β -Glycerophosphate accelerates calcification in cultured bovine vascular smooth muscle cells. *Arterioscler Thromb Vasc Biol*. 1995;15(11):2003–9.
- Masuda M, Miyazaki-Anzai S, Levi M, Ting TC, Miyazaki M. PERK-eIF2 α -ATF4-CHOP signaling contributes to TNF α -induced vascular calcification. *J Am Heart Assoc*. 2013;2(5):e000238.
- Duan XH, Chang JR, Zhang J, Zhang BH, Li YL, Teng X, et al. Activating transcription factor 4 is involved in endoplasmic reticulum stress-mediated apoptosis contributing to vascular calcification. *Apoptosis*. 2013;18(9):1132–44.
- Kiledjian M, Kadesch T. Analysis of the human liver/bone/kidney alkaline phosphatase promoter in vivo and in vitro. *Nucleic Acids Res*. 1990;18(4):957–61.
- Orimo H, Shimada T. Regulation of the human tissue-nonspecific alkaline phosphatase gene expression by all-trans-retinoic acid in SaOS-2 osteosarcoma cell line. *Bone*. 2005;36(5):866–76.
- Kobayashi T, Sugimoto T, Kanzawa M, Chihara K. Identification of an enhancer sequence in 5'-flanking region of 1A exon of mouse liver/bone/kidney-type alkaline phosphatase gene. *IUBMB Life*. 1998;44(4):683–91.
- Matsuzaki E, Takahashi-Yanaga F, Miwa Y, Hirata M, Watanabe Y, Sato N, et al. Differentiation-inducing factor-1 alters canonical Wnt signaling and suppresses alkaline phosphatase expression in osteoblast-like cell lines. *J Bone Miner Res*. 2006;21(8):1307–16.
- Hatta M, Daitoku H, Matsuzaki H, Deyama Y, Yoshimura Y, Suzuki K, et al. Regulation of alkaline phosphatase promoter activity by forkhead transcription factor FKHR. *Int J Mol Med*. 2002;9(2):147–52.
- Kim Y-J, Lee M-H, Wozney JM, Cho J-Y, Ryoo H-M. Bone morphogenetic protein-2-induced alkaline phosphatase expression is stimulated by Dlx5 and repressed by Msx2. *J Biol Chem*. 2004;279(49):50773–80.
- Flowers S, Patel PJ, Gleicher S, Amer K, Himelman E, Goel S, et al. p107-dependent recruitment of SWI/SNF to the alkaline phosphatase promoter during osteoblast differentiation. *Bone*. 2014;69:47–54.
- Walter P, Ron D. The unfolded protein response: from stress pathway to homeostatic regulation. *Science*. 2011;334(6059):1081–6.

21. Claus IM, Gravalles EM, Darling JM, Shapiro F, Glimcher MJ, Glimcher LH. In situ hybridization studies suggest a role for the basic region-leucine zipper protein hXBP-1 in exocrine gland and skeletal development during mouse embryogenesis. *Dev Dyn*. 1993;197:146–56.
22. Tohmonda T, Miyauchi Y, Ghosh R, Yoda M, Uchikawa S, Takito J, et al. The IRE1a–XBP1 pathway is essential for osteoblast differentiation through promoting transcription of Osterix. *EMBO Rep*. 2011;12:451–7.
23. Han X, Zhou J, Zhang P, Song F, Jiang R, Li M, et al. IRE1alpha dissociates with BiP and inhibits ER stress-mediated apoptosis in cartilage development. *Cell Signal*. 2013;25(11):2136–46.
24. Zhang P, McGrath B, Li S, Frank A, Zambito F, Reinert J, Gannon M, Ma K, McNaughton K, Cavener DR. The PERK eukaryotic initiation factor 2 α kinase is required for the development of the skeletal system, postnatal growth, and the function and viability of the pancreas. *Mol Cell Biol*. 2002;22(11):3864–74.
25. Yang X, Matsuda K, Bialek P, Jacquot S, Masuoka HC, Schinke T, Li L, Brancorsini S, Sassone-Corsi P, Townes TM, Hanauer A, Karsenty G. ATF4 is a substrate of RSK2 and an essential regulator of osteoblast biology: implication for Coffin-Lowry syndrome. *Cell*. 2004;117:378–98.
26. Masuda M, Miyazaki-Anzai S, Keenan AL, Okamura K, Kendrick J, Chonchol M, et al. Saturated phosphatidic acids mediate saturated fatty acid-induced vascular calcification and lipotoxicity. *J Clin Invest*. 2015;125(12):4544–58.
27. Masuda M, Miyazaki-Anzai S, Keenan AL, Shiozaki Y, Okamura K, Chick WS, et al. Activating transcription factor-4 promotes mineralization in vascular smooth muscle cells. *JCI Insight*. 2016;1:18.
28. Murray TVA, Smyrniats I, Shah AM, Brewer AC. NADPH oxidase 4 regulates cardiomyocyte differentiation via redox activation of c-Jun protein and the cis-regulation of GATA-4 gene transcription. *J Biol Chem*. 2013;288(22):15745–59.
29. Kleinjan DA, van Heyningen V. Long-range control of gene expression: emerging mechanisms and disruption in disease. *Am J Hum Genet*. 2005;76(1):8–32.
30. Ohta S, Hattori Y, Nakanishi N, Sugimoto H, Kasai K. Differential modulation of immunostimulant-triggered NO production by endoplasmic reticulum stress inducers in vascular smooth muscle cells. *J Cardiovasc Pharmacol*. 2011;57(4):434–8.
31. Novak A, Dedhar S. Signaling through beta-catenin and Lef/Tcf. *Cell Mol Life Sci*. 1999;56(5–6):523–37.
32. Westendorf JJ, Kahler RA, Schroeder TM. Wnt signaling in osteoblasts and bone diseases. *Gene*. 2004;341:19–39.
33. Shao JS, Cheng SL, Pingsterhaus JM, Charlton-Kachigian N, Loewy AP, Towler DA. Mx2 promotes cardiovascular calcification by activating paracrine Wnt signals. *J Clin Invest*. 2005;115(5):1210–20.
34. Xu H, Tsang KS, Wang Y, Chan JC, Xu G, Gao W-Q. Unfolded protein response is required for the definitive endodermal specification of mouse embryonic stem cells via Smad2 and β -catenin signaling. *J Biol Chem*. 2014;289(38):26290–301.

Ready to submit your research? Choose BMC and benefit from:

- fast, convenient online submission
- thorough peer review by experienced researchers in your field
- rapid publication on acceptance
- support for research data, including large and complex data types
- gold Open Access which fosters wider collaboration and increased citations
- maximum visibility for your research: over 100M website views per year

At BMC, research is always in progress.

Learn more biomedcentral.com/submissions

