




ILLUSTRATED REVIEW

Physical forces regulating hemostasis and thrombosis: Vessels, cells, and molecules in illustrated review

Jessica Lin BS¹ | Matthew G. Sorrells BS² | Wilbur A. Lam MD, PhD^{1,3}   |
Keith B. Neeves PhD^{4,5}  

¹Wallace H. Coulter Department of Biomedical Engineering, Georgia Institute of Technology, Emory University, Atlanta, GA, USA

²Department of Chemical and Biological Engineering, Colorado School of Mines, Golden, CO, USA

³Division of Pediatric Hematology/Oncology, Department of Pediatrics, Aflac Cancer Center and Blood Disorder Service of Children's Healthcare of Atlanta, Emory University School of Medicine, Atlanta, GA, USA

⁴Department of Bioengineering, University of Colorado Denver, Anschutz Medical Campus, Aurora, CO, USA

⁵Department of Pediatrics, Section of Hematology, Oncology, and Bone Marrow Transplant, Hemophilia and Thrombosis Center, University of Colorado Denver, Anschutz Medical Campus, Aurora, CO, USA

Correspondence

Keith B. Neeves, University of Colorado Anschutz Medical Campus, 12800 East 19th Avenue, Mail Stop 8302, Aurora, CO 80045, USA.
Email: keith.neeves@cuanschutz.edu

Funding information

National Heart, Lung, and Blood Institute, Grant/Award Number: R01HL120728, R01HL151984, R33HL141794 and R35HL145000

Handling Editor: Alisa Wolberg

Abstract

This illustrated review focuses on the physical forces that regulate hemostasis and thrombosis. These phenomena span from the vessel to the cellular to the molecular scales. Blood is a complex fluid with a viscosity that varies with how fast it flows and the size of the vessel through which it flows. Blood flow imposes forces on the vessel wall and blood cells that dictates the kinetics, structure, and stability of thrombi. The mechanical properties of blood cells create a segmented flowing fluid whereby red blood cells concentrate in the vessel core and platelets marginate to the near-wall region. At the vessel wall, shear stresses are highest, which requires a repertoire of receptors with different bond kinetics to roll, tether, adhere, and activate on inflamed endothelium and extracellular matrices. As a thrombus grows and then contracts, forces regulate platelet aggregation as well as von Willebrand factor function and fibrin mechanics. Forces can also originate from platelets as they respond to the external forces and sense the stiffness of their local environment.

KEYWORDS

biomechanical phenomena, blood platelets, fibrin, hemodynamics, rheology, von Willebrand factor

Essentials

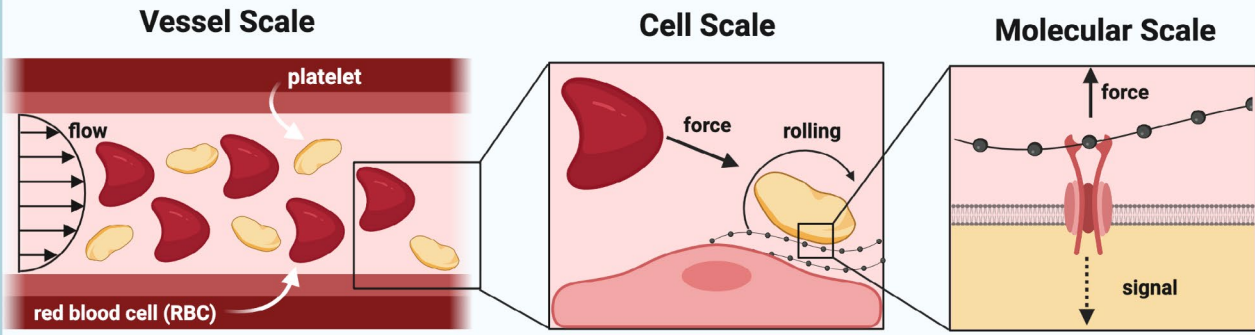
- Physical forces regulate blood clot formation and stability.
- Forces imposed by blood flow regulate platelet adhesion and aggregation at the site of vascular injury.
- Platelets can sense forces and create their own forces during spreading and contraction.
- The structure and function of two biopolymers essential to clot stability—von Willebrand factor and fibrin—are regulated by force.

This is an open access article under the terms of the Creative Commons Attribution-NonCommercial-NoDerivs License, which permits use and distribution in any medium, provided the original work is properly cited, the use is non-commercial and no modifications or adaptations are made.

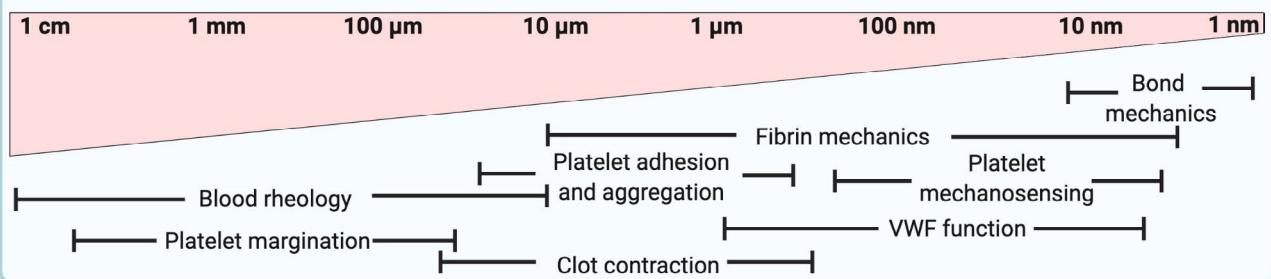
© 2021 The Authors. *Research and Practice in Thrombosis and Haemostasis* published by Wiley Periodicals LLC on behalf of International Society on Thrombosis and Haemostasis (ISTH).

Reference citations¹⁻³

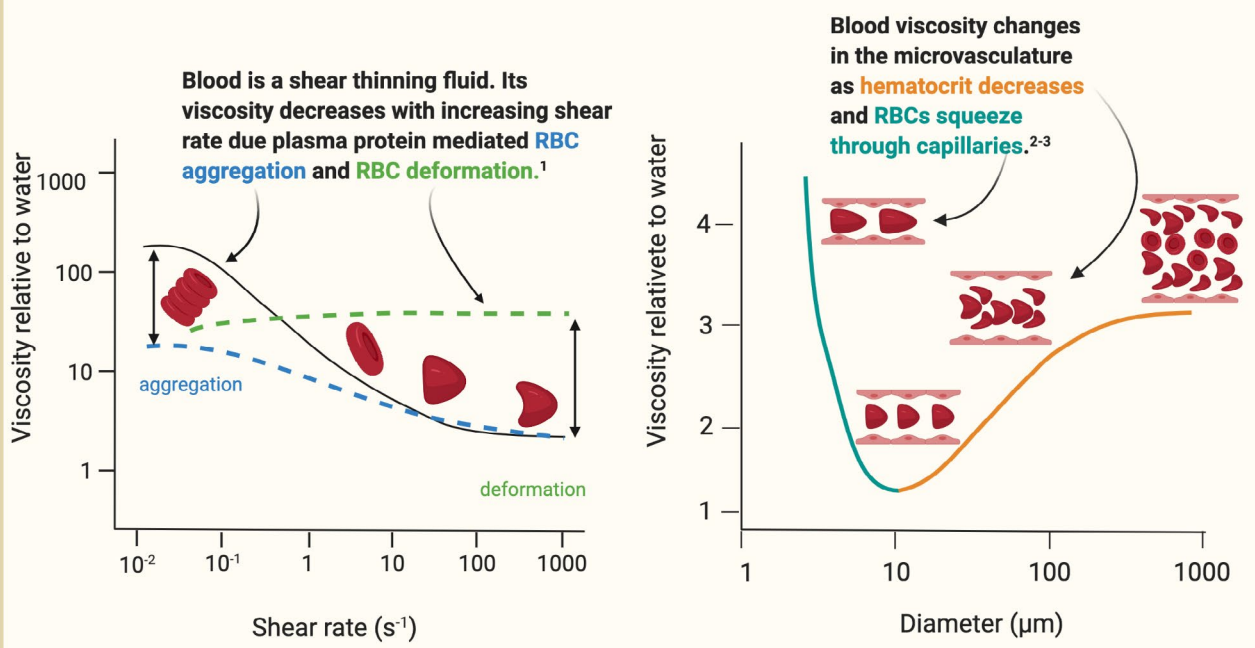
Biomechanical phenomena across length scales



Blood flow imposes forces on blood vessels, blood cells, and plasma and endothelial derived proteins and receptors. These forces influence many aspects of thrombus formation over many length scales (see below). Platelets themselves can apply forces on a thrombus by mechanosensing their environment and clot contraction. These biomechanical mechanisms are potential therapeutic targets that can discriminate between the disparate forces and flows that regulate hemostasis and arterial, venous, and microvascular thrombosis.



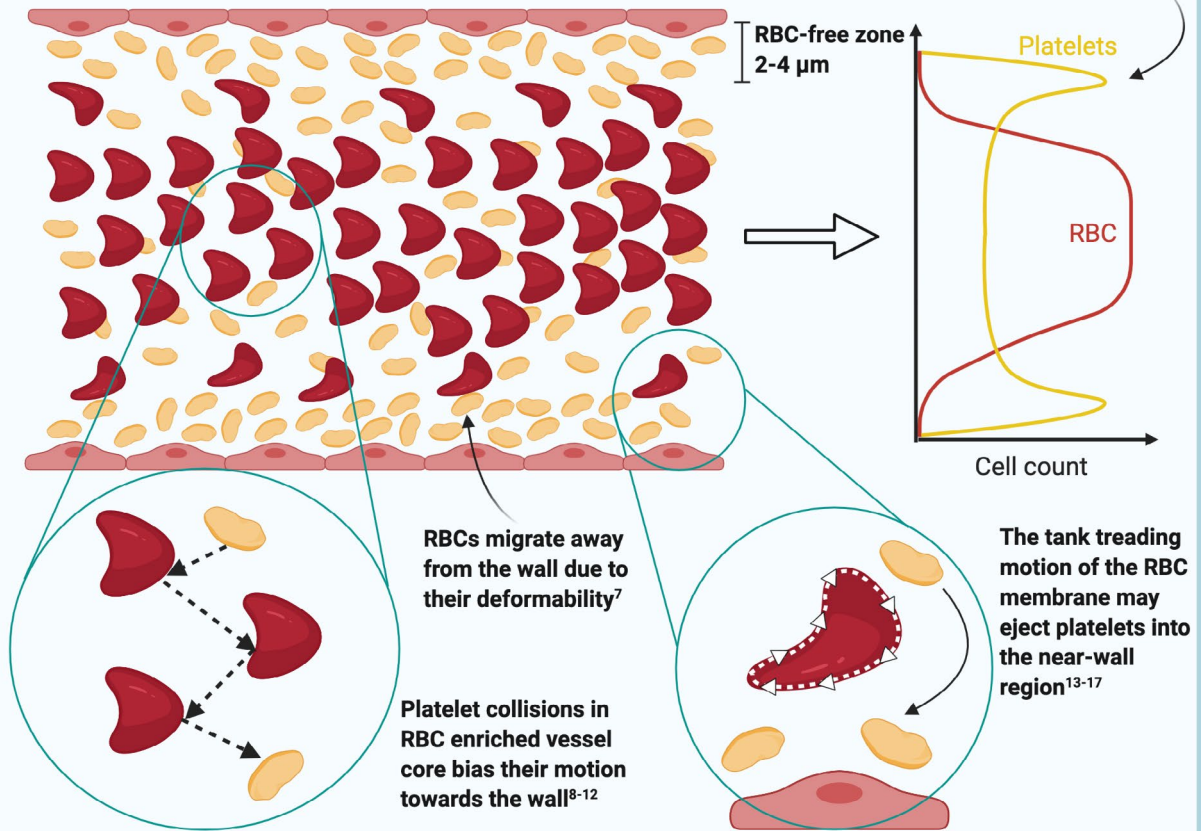
Blood rheology: Viscosity is a function of shear rate and vessel size



Reference citations⁴⁻¹⁷

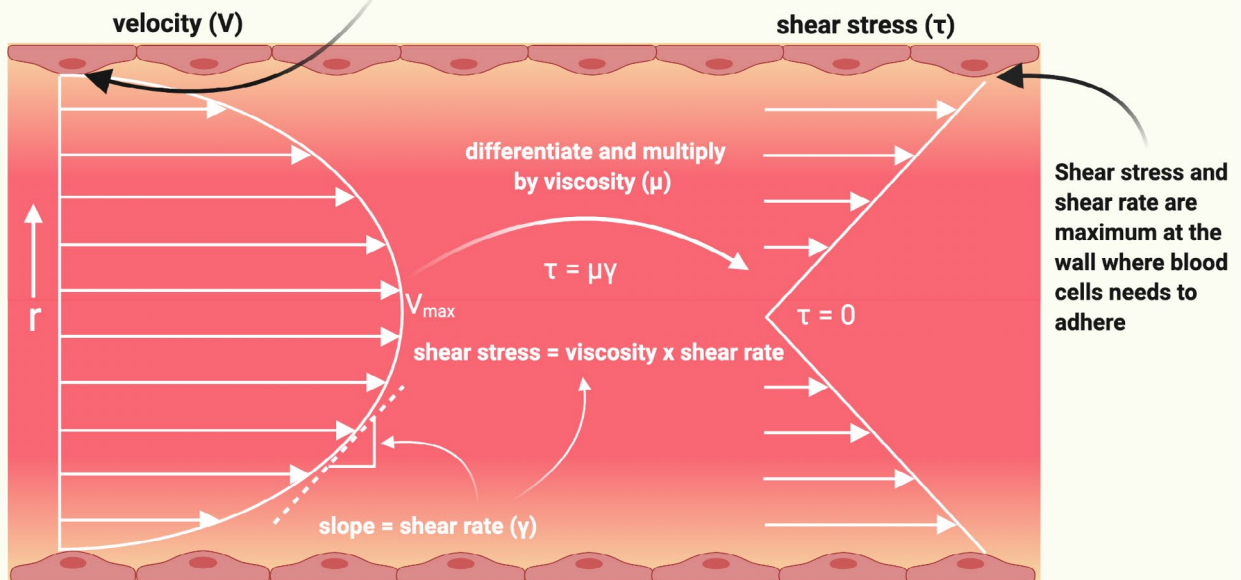
Platelet margination: Blood cell bumper cars

3-4 fold higher than in vessel center⁴⁻⁶

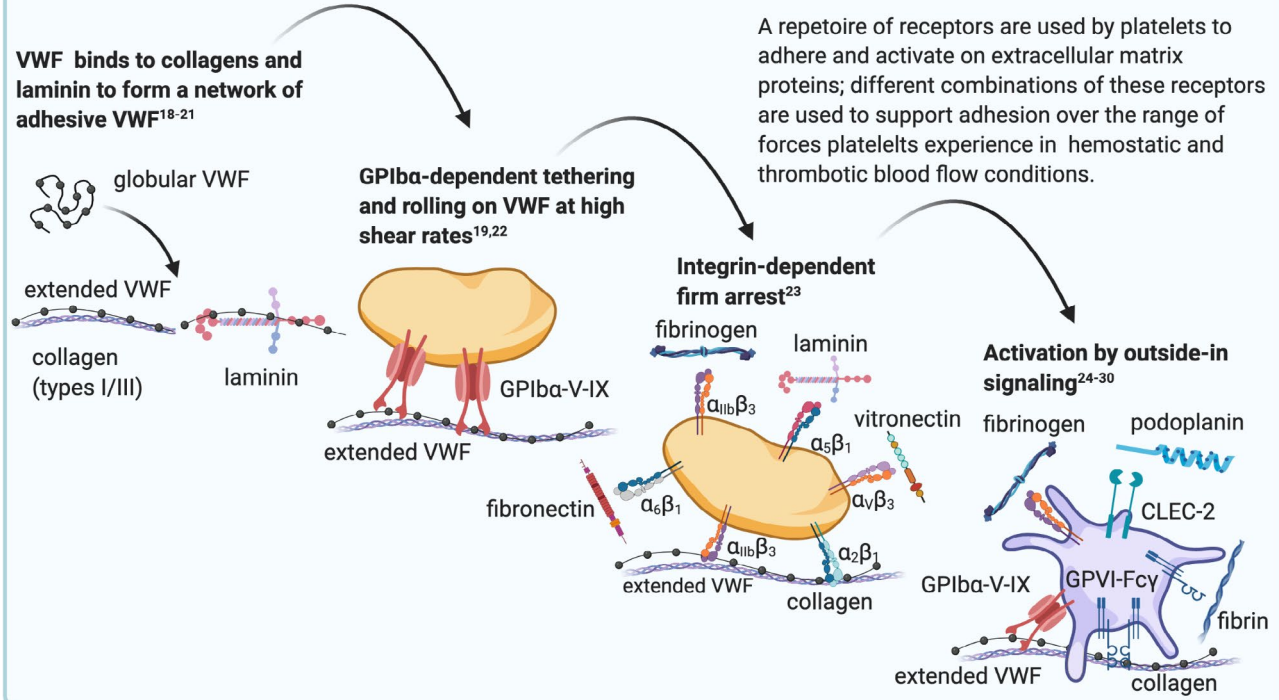


Making sense of shear rate and shear stress

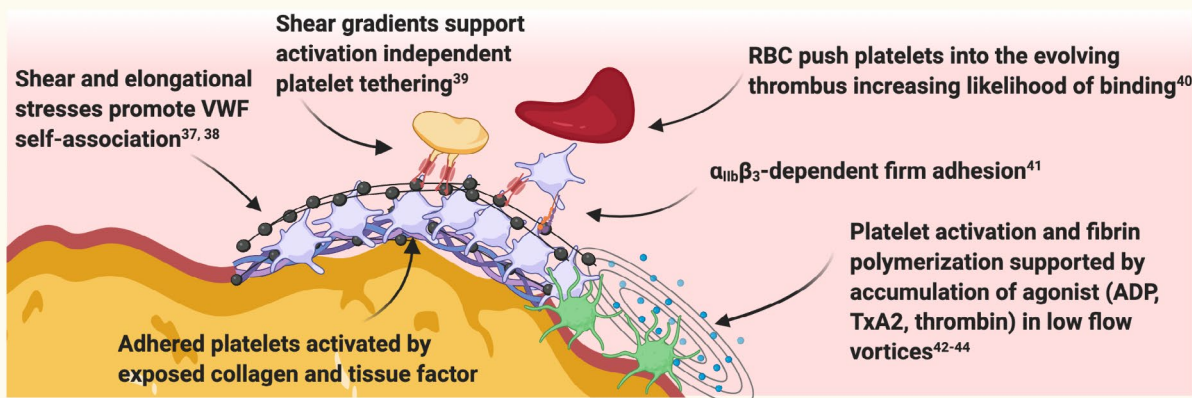
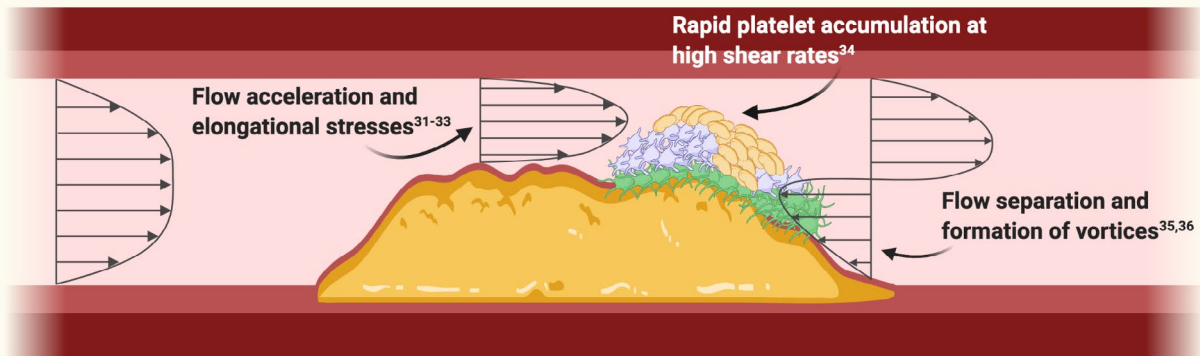
Velocity is zero at the wall due to drag along the vessel wall



Shear stress dependent platelet adhesion



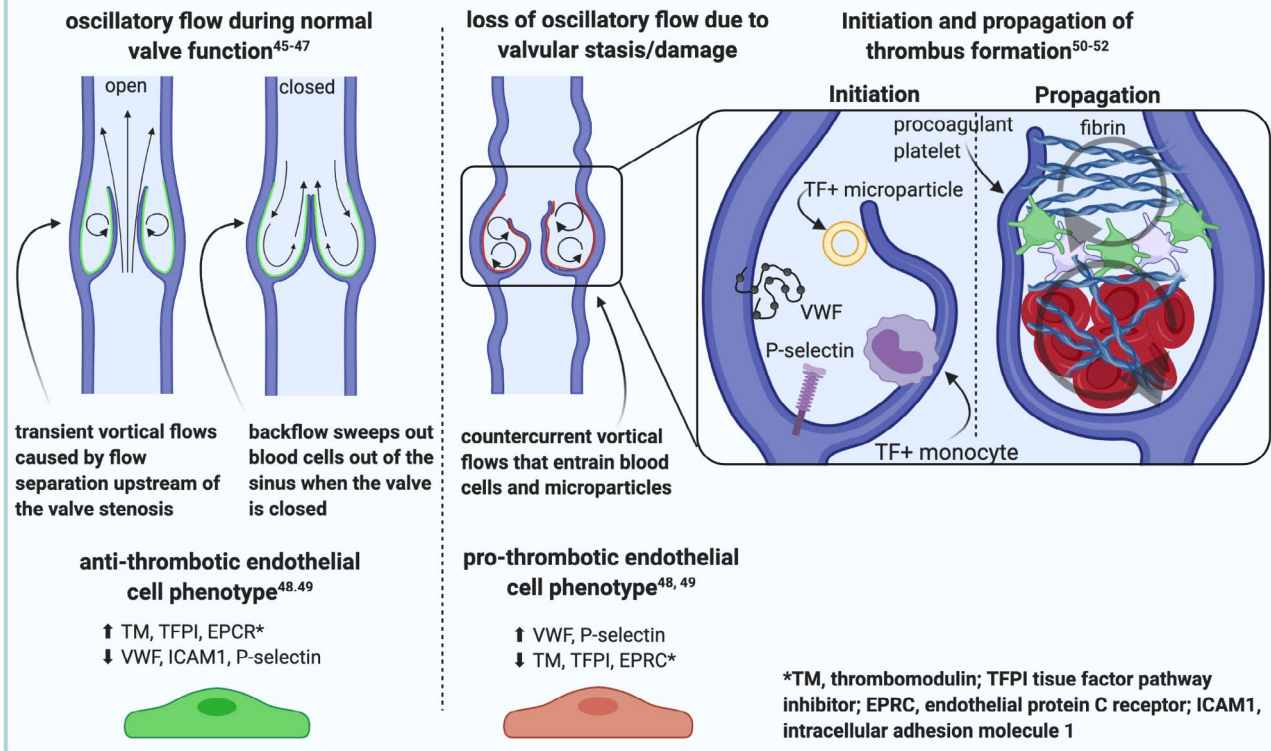
Forces and flows regulating platelet aggregation



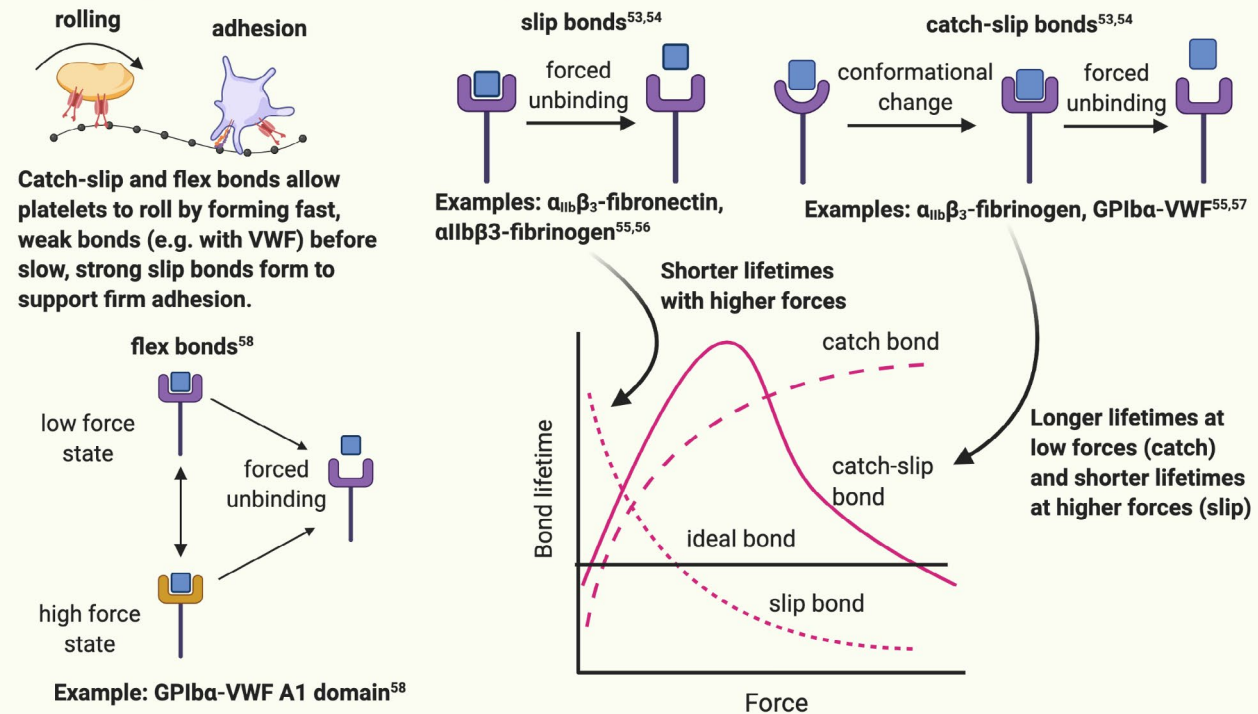
- Unactivated platelet
- Activated platelet (integrin activation)
- Highly activated platelet (degranulated)
- Platelet agonists

Reference citations⁴⁵⁻⁵⁹

Hemodynamically regulated pro- and anti-thrombotic mechanisms in venous valves



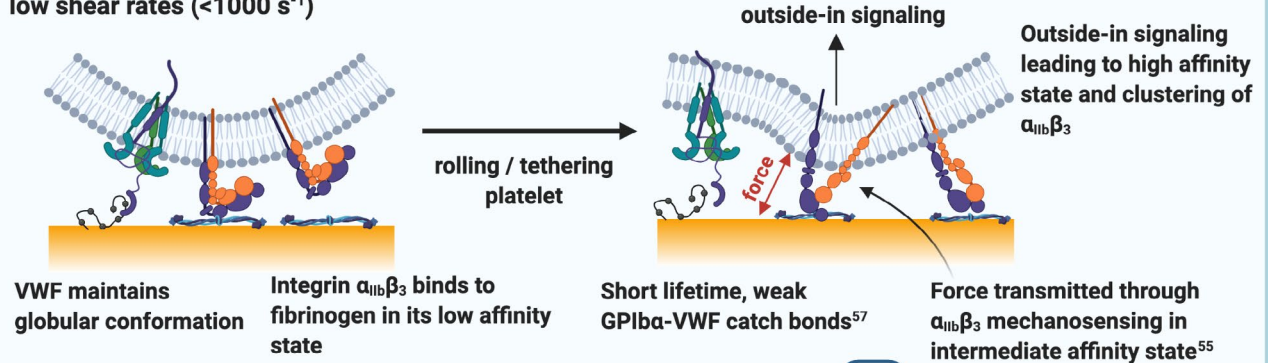
Rolling blood cells: Slip, catch, and flex bonds*



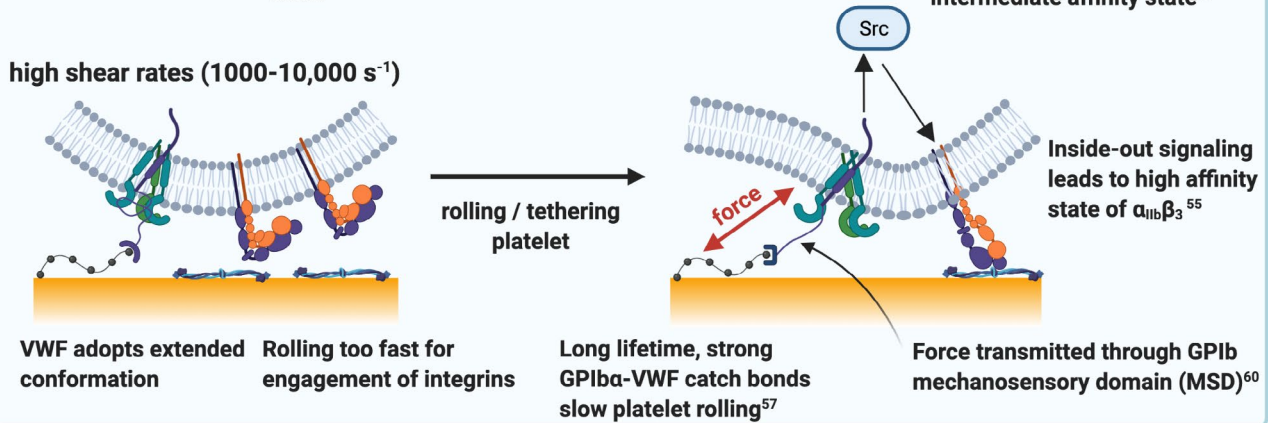
*Data from different experimental approaches supports different bond models for the receptor-ligand pairs.⁵⁹

Platelet mechanosensing in rolling and tethering

low shear rates (<1000 s⁻¹)

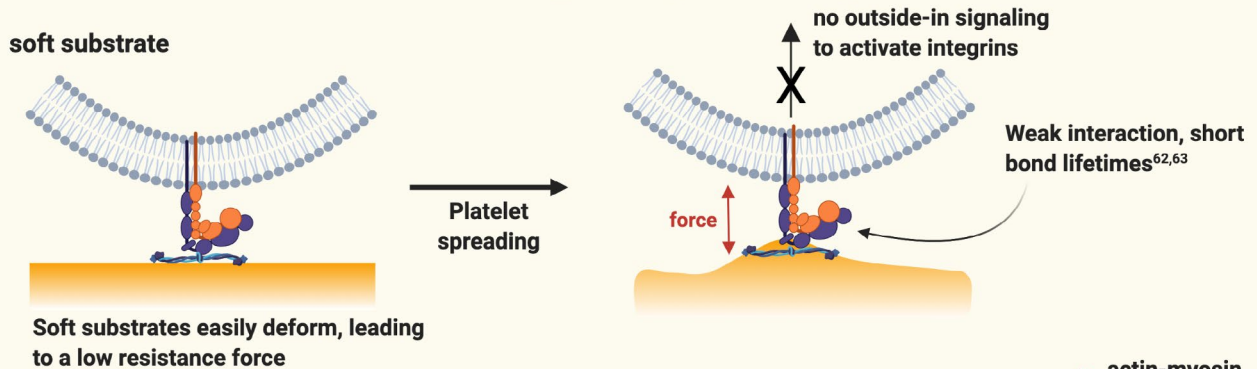


high shear rates (1000-10,000 s⁻¹)

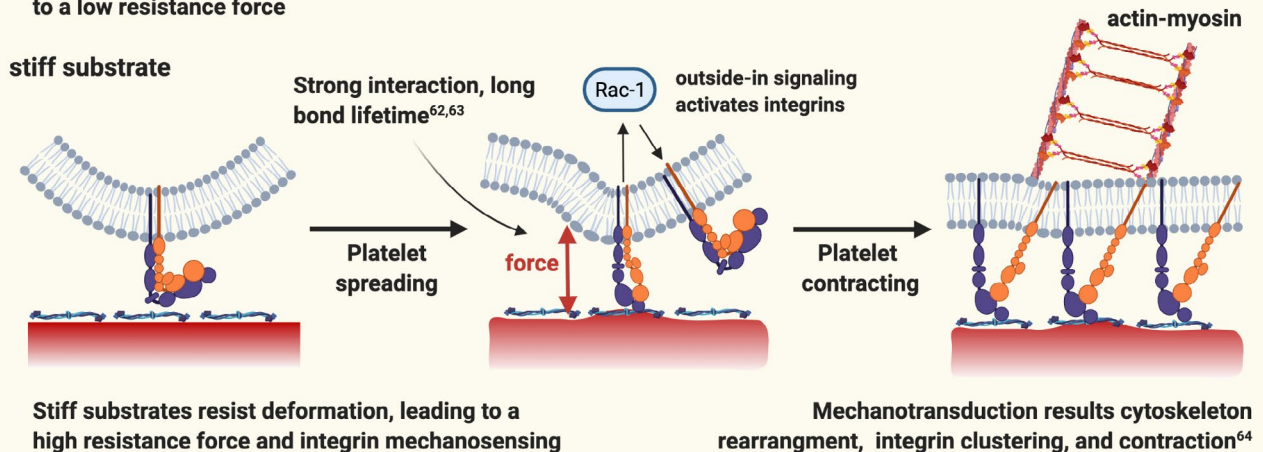


Platelet mechanosensing in spreading and contraction

soft substrate

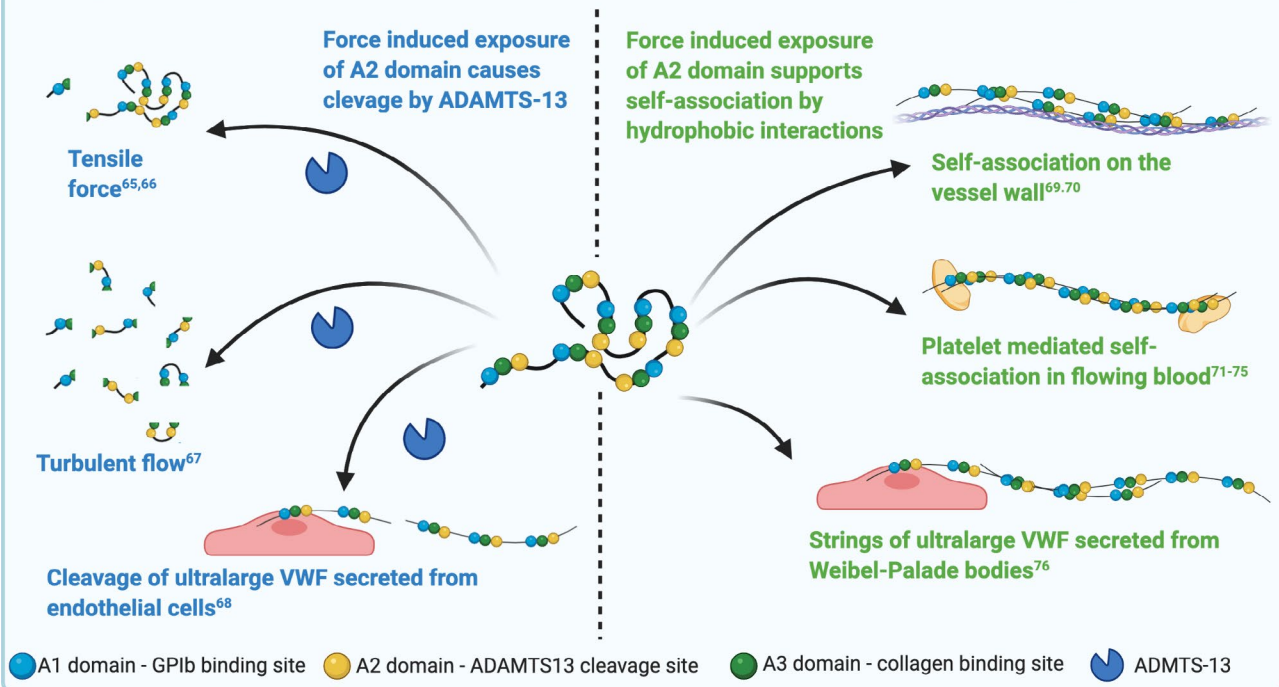


stiff substrate



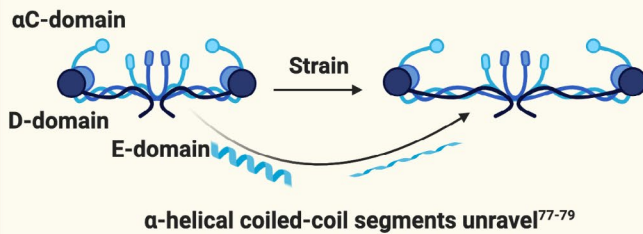
Reference citations⁶⁵⁻⁹⁵

Regulation of von Willebrand factor function by force

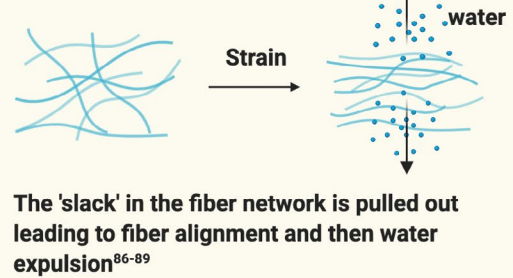


Fibrin mechanics from the molecular to clot scale

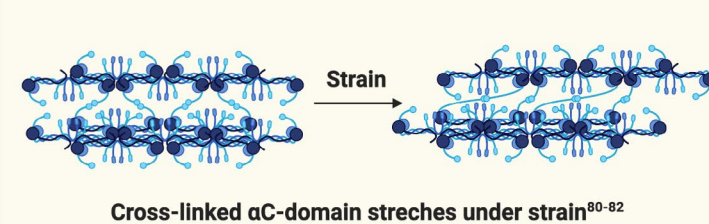
Fibrin(ogen) molecule



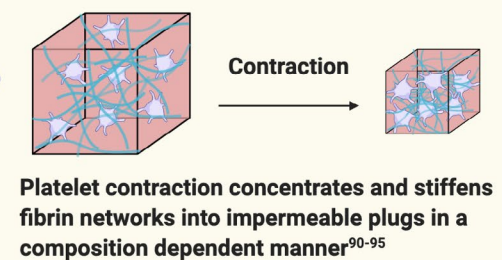
Fibrin network



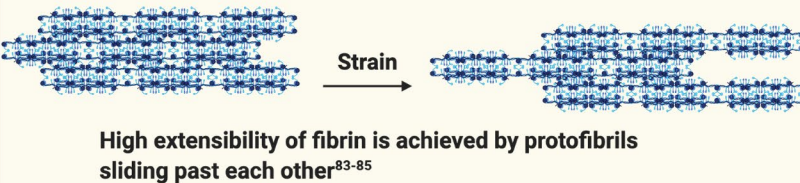
Fibrin protofibril



Fibrin-platelet clot



Fibrin fiber



ACKNOWLEDGMENTS

Figures created with BioRender.com.

AUTHOR CONTRIBUTIONS

JL, MGS, WAL, and KBN wrote the manuscript.

RELATIONSHIP DISCLOSURE

The authors declare no conflicts of interest.

ORCID

Wilbur A. Lam  <https://orcid.org/0000-0002-0325-7990>

Keith B. Neeves  <https://orcid.org/0000-0001-7546-4588>

TWITTER

Wilbur A. Lam  @WilburLam

Keith B. Neeves  @neeveslab

REFERENCES

- Chien S. Shear dependence of effective cell volume as a determinant of blood viscosity. *Science (New York, NY)*. 1970;168:977.
- Pries AR, Secomb TW, Gaehtgens P, Gross JF. Blood flow in microvascular networks. Experiments and simulation. *Circ Res*. 1990;67:826-834.
- Pries AR, Neuhaus D, Gaehtgens P. Blood viscosity in tube flow: dependence on diameter and hematocrit. *Am J Physiol*. 1992;263:H170-H1778.
- Tangelder GJ, Teirlinck HC, Slaaf DW, Reneman RS. Distribution of blood platelets flowing in arterioles. *Am J Physiol Heart Circ Physiol*. 1985;248:H318-H323.
- Aarts PA, van den Broek SA, Prins GW, Kuiken GD, Sixma JJ, Heethaar RM. Blood platelets are concentrated near the wall and red blood cells, in the center in flowing blood. *Arteriosclerosis*. 1988;8:819-824.
- Tilles AW, Eckstein EC. The near-wall excess of platelet-sized particles in blood flow: its dependence on hematocrit and wall shear rate. *Microvasc Res*. 1987;33:211-223.
- Goldsmith HL. Red cell motions and wall interactions in tube flow. *Fed Proc*. 1971;30:1578-1590.
- Turitto VT, Benis AM, Leonard EF. Platelet diffusion in flowing blood. *Ind Eng Chem Fundam*. 1972;11:216-223.
- Eckstein EC, Bailey DG, Shapiro AH. Self-diffusion of particles in shear flow of a suspension. *J Fluid Mech*. 1977;79:191-208.
- Turitto VT, Weiss HJ. Red blood cells: their dual role in thrombus formation. *Science*. 1980;207:541-543.
- Leighton D, Acrivos A. The shear-induced migration of particles in concentrated suspensions. *J Fluid Mech*. 1987;181:415-439.
- Grandchamp X, Coupier G, Srivastav A, Minetti C, Podgorski T. Lift and down-gradient shear-induced diffusion in red blood cell suspensions. *Phys Rev Lett*. 2013;110:108101.
- Fischer TM, Stöhr-Lissen M, Schmid-Schönbein H. The red cell as a fluid droplet: tank tread-like motion of the human erythrocyte membrane in shear flow. *Science*. 1978;202:894-896.
- Smart JR, Leighton J, David T. Measurement of the drift of a droplet due to the presence of a plane. *Phys Fluids A*. 1991;3:21.
- Yeh C, Calvez AC, Eckstein EC. An estimated shape function for drift in a platelet-transport model. *Biophys J*. 1994;67:1252-1259.
- Crowl L, Fogelson AL. Analysis of mechanisms for platelet near-wall excess under arterial blood flow conditions. *J Fluid Mech*. 2011;676:348-375.
- Zhao H, Shaqfeh ESG, Narsimhan V. Shear-induced particle migration and margination in a cellular suspension. *Phys Fluids*. 2012;24:011902.
- Cruz MA, Yuan H, Lee JR, Wise RJ, Handin RI. Interaction of the von Willebrand factor (vWF) with collagen. Localization of the primary collagen-binding site by analysis of recombinant vWF A domain polypeptides. *J Biol Chem*. 1995;270:19668.
- Savage B, Almus-Jacobs F, Ruggeri ZM. Specific synergy of multiple substrate-receptor interactions in platelet thrombus formation under flow. *Cell*. 1998;94:657-666.
- Inoue O, Suzuki-Inoue K, Ozaki Y. Redundant mechanism of platelet adhesion to laminin and collagen under flow: involvement of von Willebrand factor and glycoprotein Ib-IX-V. *J Biol Chem*. 2008;283:16279-16282.
- Barg A, Ossig R, Goerge T, et al. Soluble plasma-derived von Willebrand factor assembles to a haemostatically active filamentous network. *Thrombosis Haemostasis*. 2007;97:514-526.
- Reininger AJ, Heijnen HFG, Schumann H, Specht HM, Schramm W, Ruggeri ZM. Mechanism of platelet adhesion to von Willebrand factor and microparticle formation under high shear stress. *Blood*. 2006;107:3537-3545.
- Gruner S, Prostedna M, Schulte V, et al. Multiple integrin-ligand interactions synergize in shear-resistant platelet adhesion at sites of arterial injury in vivo. *Blood*. 2003;102:4021-4027.
- Quek LS, Pasquet JM, Hers I, et al. Fyn and Lyn phosphorylate the Fc receptor gamma chain downstream of glycoprotein VI in murine platelets, and Lyn regulates a novel feedback pathway. *Blood*. 2000;96:4246-4253.
- Schmaier AA, Zou Z, Kazlauskas A, et al. Molecular priming of Lyn by GPVI enables an immune receptor to adopt a hemostatic role. *Proc Natl Acad Sci*. 2009;106:21167-21172.
- Watson SP, Herbert JM, Pollitt AY. GPVI and CLEC-2 in hemostasis and vascular integrity. *J Thrombosis Haemostasis: JTH*. 2010;8:1456-1467.
- May F, Hagedorn I, Pleines I, et al. CLEC-2 is an essential platelet-activating receptor in hemostasis and thrombosis. *Blood*. 2009;114:3464.
- Alshehri OM, Hughes CE, Montague S, et al. Fibrin activates GPVI in human and mouse platelets. *Blood*. 2015;126:1601-1608.
- Mammadova-Bach E, Ollivier V, Loyau S, et al. Platelet glycoprotein VI binds to polymerized fibrin and promotes thrombin generation. *Blood*. 2015;126:683-691.
- Durrant TN, van den Bosch MT, Hers I. Integrin α IIb β 3 outside-in signaling. *Blood*. 2017;130:1607-1619.
- Bluestein D, Niu L, Schoephoerster RT, Dewanjee MK. Fluid mechanics of arterial stenosis: relationship to the development of mural thrombus. *Ann Biomed Eng*. 1997;25:344-356.
- Wootton DM, Ku DN. Fluid mechanics of vascular systems, diseases, and thrombosis. *Annu Rev Biomed Eng*. 1999;1:299-329.
- Berger SA, Jou LD. Flows in stenotic vessels. *Annu Rev Fluid Mech*. 2000;32:347-382.
- Casa LDC, Ku DN. Thrombus formation at high shear rates. *Annu Rev Biomed Eng*. 2017;19:415-433.
- Mailhac A, Badimon JJ, Fallon JT, et al. Effect of an eccentric severe stenosis on fibrin(ogen) deposition on severely damaged vessel wall in arterial thrombosis. Relative contribution of fibrin(ogen) and platelets. *Circulation*. 1994;90:988-996.
- Javadzadegan A, Yong ASC, Chang M, et al. Flow recirculation zone length and shear rate are differentially affected by stenosis severity in human coronary arteries. *Am J Physiol-Heart Circ Physiol*. 2013;304(4):H559-H566.
- Colace TV, Diamond SL. Direct observation of von Willebrand factor elongation and fiber formation on collagen during acute whole blood exposure to pathological flow. *Arterioscler Thromb Vasc Biol*. 2013;33:105-113.
- Westein E, van der Meer AD, Kuijpers MJE, Frimat J-P, van den Berg A, Heemskerk JWM. Atherosclerotic geometries exacerbate pathological thrombus formation poststenosis in a von Willebrand factor-dependent manner. *Proc Natl Acad Sci*. 2013;110:1357-1362.

39. Nesbitt WS, Westein E, Tovar-Lopez FJ, et al. A shear gradient-dependent platelet aggregation mechanism drives thrombus formation. *Nat Med*. 2009;15:665-673.
40. Walton BL, Lehmann M, Skorzewski T, et al. Elevated hematocrit enhances platelet accumulation following vascular injury. *Blood*. 2017;129:2537-2546.
41. Goncalves I, Nesbitt WS, Yuan Y, Jackson SP. Importance of temporal flow gradients and integrin α IIb β 3 mechanotransduction for shear activation of platelets. *J Biol Chem*. 2005;280:15430-15437.
42. Reiningger AJ, Reiningger CB, Heinzmann U, Wurzingler LJ. Residence time in niches of stagnant flow determines fibrin clot formation in an arterial branching model-detailed flow analysis and experimental results. *Thromb Haemost*. 1995;74:916-922.
43. Kaazempur-Mofrad MR, Ethier CR. Mass transport in an anatomically realistic human right coronary artery. *Ann Biomed Eng*. 2001;29:121-127.
44. Rana K, Neeves KB. Blood flow and mass transfer regulation of coagulation. *Blood Rev*. 2016;30:357-368.
45. Karino T, Motomiya M. Flow through a venous valve and its implication for thrombus formation. *Thromb Res*. 1984;36:245-257.
46. Lurie F, Kistner RL, Eklof B. The mechanism of venous valve closure in normal physiologic conditions. *J Vasc Surg*. 2002;35:713-717.
47. Lurie F, Kistner RL, Eklof B, Kessler D. Mechanism of venous valve closure and role of the valve in circulation: a new concept. *J Vasc Surg*. 2003;38:955-961.
48. Brooks EG, Trotman W, Wadsworth MP, et al. Valves of the deep venous system: an overlooked risk factor. *Blood*. 2009;114:1138-1139.
49. Welsh JD, Hoofnagle MH, Bamezai S, et al. Hemodynamic regulation of perivalvular endothelial gene expression prevents deep venous thrombosis. *J Clin Invest*. 2019;129:5489-5500.
50. Sevitt S. The structure and growth of valve-pocket thrombi in femoral veins. *J Clin Pathol*. 1974;27:517-528.
51. von Bruhl ML, Stark K, Steinhart A, et al. Monocytes, neutrophils, and platelets cooperate to initiate and propagate venous thrombosis in mice in vivo. *J Exp Med*. 2012;209:819-835.
52. Lehmann M, Schoeman RM, Krohl PJ, et al. Platelets drive thrombus propagation in a hematocrit and glycoprotein VI-dependent manner in an in vitro venous thrombosis model. *Arterioscler Thrombosis Vasc Biol*. 2018;38:1052-1062.
53. Thomas WE. Mechanochemistry of receptor-ligand bonds. *Curr Opin Struct Biol*. 2009;19:50-55.
54. McEver RP, Zhu C. Rolling cell adhesion. *Annu Rev Cell Dev Biol*. 2010;26:363-396.
55. Chen Y, Ju LA, Zhou F, et al. An integrin α IIb β 3 intermediate affinity state mediates biomechanical platelet aggregation. *Nat Mater*. 2019;18:760-769.
56. Litvinov RI, Barsegov V, Schissler AJ, et al. Dissociation of bimolecular α IIb β 3-fibrinogen complex under a constant tensile force. *Biophys J*. 2011;100:165-173.
57. Yago T, Lou J, Wu T, et al. Platelet glycoprotein Ib α forms catch bonds with human WT vWF but not with type 2B von Willebrand disease vWF. *J Clin Invest*. 2008;118:3195-3207.
58. Kim J, Zhang C-Z, Zhang X, Springer TA. A mechanically stabilized receptor-ligand flex-bond important in the vasculature. *Nature*. 2010;466:992.
59. Rakshit S, Sivasankar S. Biomechanics of cell adhesion: how force regulates the lifetime of adhesive bonds at the single molecule level. *Phys Chem Chem Phys*. 2014;16:2211.
60. Zhang W, Deng W, Zhou L, et al. Identification of a juxtamembrane mechanosensitive domain in the platelet mechanosensor glycoprotein Ib-IX complex. *Blood*. 2015;125:562-569.
61. Zhang XF, Zhang W, Quach ME, Deng W, Li R. Force-regulated refolding of the mechanosensory domain in the platelet glycoprotein Ib-IX complex. *Biophys J*. 2019;116:1960-1969.
62. Qiu Y, Brown AC, Myers DR, et al. Platelet mechanosensing of substrate stiffness during clot formation mediates adhesion, spreading, and activation. *Proc Natl Acad Sci*. 2014;111:14430-14435.
63. Hansen CE, Qiu Y, McCarty OJT, Lam WA. Platelet mechanotransduction. *Annu Rev Biomed Eng*. 2018;20:253-275.
64. Pratt SJP, Lee RM, Martin SS. The mechanical microenvironment in breast cancer. *Cancers (Basel)*. 2020;12:1452.
65. Zhang X, Halvorsen K, Zhang C-Z, Wong WP, Springer TA. Mechanoenzymatic cleavage of the ultralarge vascular protein von Willebrand factor. *Science*. 2009;324:1330-1334.
66. Wu T, Lin J, Cruz M, Dong J-F, Zhu C. Force-induced cleavage of single VWF A1A2A3 tridomains by ADAMTS-13. *Blood*. 2010;115:370.
67. Bortot M, Ashworth K, Sharifi A, et al. Turbulent flow promotes cleavage of VWF (von Willebrand factor) by ADAMTS13 (a disintegrin and metalloproteinase with a thrombospondin type-1 motif, member 13). *Arterioscler Thromb Vasc Biol*. 2019;39:1831-1842.
68. Dong J-F, Moake JL, Nolasco L, et al. ADAMTS-13 rapidly cleaves newly secreted ultralarge von Willebrand factor multimers on the endothelial surface under flowing conditions. *Blood*. 2002;100:4033-4039.
69. Savage B, Sixma J, Ruggeri Z. Functional self-association of von Willebrand factor during platelet adhesion under flow. *Proc Natl Acad Sci*. 2002;99(1):425-430.
70. Ulrichs H, Vanhoorelbeke K, Girma JP, Lenting PJ, Vauterin S, Deckmyn H. The von Willebrand factor self-association is modulated by a multiple domain interaction. *J Thromb Haemost*. 2005;3:552-561.
71. Moake JL, Turner NA, Stathopoulos NA, Nolasco L, Hellums JD. Shear-induced platelet aggregation can be mediated by vWF released from platelets, as well as by exogenous large or unusually large vWF multimers, requires adenosine diphosphate, and is resistant to aspirin. *Blood*. 1988;71:1366-1374.
72. Chow TW, Hellums JD, Moake JL, Kroll MH. Shear stress-induced von Willebrand factor binding to platelet glycoprotein Ib initiates calcium influx associated with aggregation. *Blood*. 1992;80:113-120.
73. Shankaran H, Alexandridis P, Neelamegham S. Aspects of hydrodynamic shear regulating shear-induced platelet activation and self-association of von Willebrand factor in suspension. *Blood*. 2003;101:2637-2645.
74. Dayananda K, Singh I, Mondal N, Neelamegham S. von Willebrand factor self-association on platelet GpIb α under hydrodynamic shear: effect on shear-induced platelet activation. *Blood*. 2010;116:3990.
75. Zhang C, Kelkar A, Neelamegham S. von Willebrand factor self-association is regulated by the shear-dependent unfolding of the A2 domain. *Blood Adv*. 2019;3:957-968.
76. Li Y, Choi H, Zhou Z, et al. Covalent regulation of ULVWF string formation and elongation on endothelial cells under flow conditions. *J Thromb Haemost*. 2008;6:1135-1143.
77. Brown AE, Litvinov RI, Discher DE, Weisel JW. Forced unfolding of coiled-coils in fibrinogen by single-molecule AFM. *Biophys J*. 2007;92:L39-41.
78. André EXB, Litvinov RI, Discher DE, Weisel JW. Forced unfolding of coiled-coils in fibrinogen by single-molecule AFM. *Biophys J*. 2007;92:L39-L41.
79. Zhmurov A, Brown AE, Litvinov RI, Dima RI, Weisel JW, Barsegov V. Mechanism of fibrin(ogen) forced unfolding. *Structure*. 2011;19:1615-1624.
80. Standeven KF, Carter AM, Grant PJ, et al. Functional analysis of fibrin -chain cross-linking by activated factor XIII: determination of a cross-linking pattern that maximizes clot stiffness. *Blood*. 2007;110:902-907.
81. Houser JR, O'Brien ET, Taylor RM, Superfine R, Lord ST, Falvo MR. Stiffening of individual fibrin fibers equitably distributes strain and strengthens networks. *Biophys J*. 2010;98:1632-1640.

82. Averett RD, Menn B, Lee EH, Helms CC, Barker T, Guthold M. A modular fibrinogen model that captures the stress-strain behavior of fibrin fibers. *Biophys J*. 2012;103:1537-1544.
83. Liu W, Jawerth LM, Sparks EA, et al. Fibrin fibers have extraordinary extensibility and elasticity. *Science*. 2006;313:634.
84. Münster S, Jawerth LM, Leslie BA, Weitz JI, Fabry B, Weitz DA. Strain history dependence of the nonlinear stress response of fibrin and collagen networks. *Proc Natl Acad Sci*. 2013;110(30):12197-12202.
85. Liu W, Carlisle CR, Sparks EA, Guthold M. The mechanical properties of single fibrin fibers. *J Thromb Haemost*. 2010;8:1030-1036.
86. Brown AEX, Litvinov RI, Discher DE, Purohit PK, Weisel JW. Multiscale mechanics of fibrin polymer: gel stretching with protein unfolding and loss of water. *Science*. 2009;325:741-744.
87. Hudson NE, Houser JR, O'Brien ET, et al. Stiffening of individual fibrin fibers equitably distributes strain and strengthens networks. *Biophys J*. 2010;98:1632-1640.
88. Piechocka IK, Bacabac RG, Potters M, Mackintosh FC, Koenderink GH. Structural hierarchy governs fibrin gel mechanics. *Biophys J*. 2010;98:2281-2289.
89. Litvinov RI, Faizullin DA, Zuev YF, Weisel JW. The α -helix to β -sheet transition in stretched and compressed hydrated fibrin clots. *Biophys J*. 2012;103:1020-1027.
90. Lam WA, Chaudhuri O, Crow A, et al. Mechanics and contraction dynamics of single platelets and implications for clot stiffening. *Nat Mater*. 2010;10:61-66.
91. Muthard RW, Diamond SL. Blood clots are rapidly assembled hemodynamic sensors: flow arrest triggers intraluminal thrombus contraction. *Arterioscler Thromb Vasc Biol*. 2012;32:2938-2945.
92. Tutwiler V, Litvinov RI, Lozhkin AP, et al. Kinetics and mechanics of clot contraction are governed by the molecular and cellular composition of the blood. *Blood*. 2015;127:149-159.
93. Wufsus AR, Rana K, Brown A, Dorgan JR, Liberatore MW, Neeves KB. Elastic behavior and platelet retraction in low- and high-density fibrin gels. *Biophys J*. 2015;108:173-183.
94. Höök P, Litvinov RI, Kim OV, et al. Strong binding of platelet integrin α IIb β 3 to fibrin clots: potential target to destabilize thrombi. *Sci Rep*. 2017;7:13001.
95. Kim OV, Litvinov RI, Alber MS, Weisel JW. Quantitative structural mechanobiology of platelet-driven blood clot contraction. *Nat Commun*. 2017;8:714.

How to cite this article: Lin J, Sorrells MG, Lam WA, Neeves KB. Physical forces regulating hemostasis and thrombosis: Vessels, cells, and molecules in illustrated review. *Res Pract Thromb Haemost*. 2021;5:e12548. <https://doi.org/10.1002/rth2.12548>