



HHS Public Access

Author manuscript

Nat Commun. Author manuscript; available in PMC 2015 March 23.

Published in final edited form as:

Nat Commun. ; 5: 4047. doi:10.1038/ncomms5047.

Generation of three dimensional retinal tissue with functional photoreceptors from human iPSCs

Xiufeng Zhong¹, Christian Gutierrez¹, Tian Xue^{2,3}, Christopher Hampton¹, M. Natalia Vergara¹, Li-Hui Cao^{3,*}, Ann Peters⁴, Tea-Soon Park⁴, Elias T. Zambidis⁴, Jason S. Meyer⁵, David M. Gamm⁶, King-Wai Yau^{1,3}, and M. Valeria Canto-Soler¹

M. Valeria Canto-Soler: mcantos1@jhmi.edu

¹Wilmer Eye Institute, Johns Hopkins University School of Medicine, Baltimore, Maryland 21287, USA

²School of Life Sciences and Hefei National Laboratory for Physical Sciences at Microscale, University of Science and Technology of China, Hefei 230026, China

³Solomon H. Snyder Department of Neuroscience, Johns Hopkins University School of Medicine, Baltimore, Maryland 21205, USA

⁴Institute for Cell Engineering, and Kimmel Comprehensive Cancer Center, Johns Hopkins School of Medicine, Baltimore, Maryland 21205, USA

⁵Department of Biology, Department of Medical and Molecular Genetics, and Stark Neuroscience Research Institute, Indiana University Purdue University, Indianapolis, Indiana 46202, USA

⁶Department of Ophthalmology and Visual Sciences, McPherson Eye Research Institute and Waisman Center Stem Cell Research Program, University of Wisconsin, Madison, Wisconsin, 53705, USA

Abstract

Users may view, print, copy, and download text and data-mine the content in such documents, for the purposes of academic research, subject always to the full Conditions of use:http://www.nature.com/authors/editorial_policies/license.html#terms

Correspondence to: M. Valeria Canto-Soler, mcantos1@jhmi.edu.

*Present address: State Key Laboratory of Biomembrane and Membrane Biotechnology, Center for Quantitative Biology, McGovern Institute for Brain Research, Peking-Tsinghua Center for Life Sciences, College of Life Sciences, Peking University, Beijing 100871, China

Author Contributions

X.Z. designed and performed experiments, collected samples, analyzed and interpreted data, and wrote the manuscript. C.G. performed experiments, analyzed data, obtained confocal images and prepared the figures for the manuscript. T.X. designed and performed the electrical recordings (with contributions from L.H.C.). C.H. performed experiments and analyzed data under the supervision of X.Z. and C.G. M.N.V. optimized and performed electroporations and contributed to the writing of the manuscript. A.P. and E.T.Z. generated the CB- and KA.1-iPSC lines used in this study, and T.S.P. provided technical support for their culture. J.S.M. and D.G. contributed to the establishment of the initial differentiation protocol in the Canto-Soler lab. K.W.Y. designed and interpreted the electrical recordings and contributed to the writing of the manuscript. M.V.C.S. conceived and supervised the project, designed experiments, interpreted data and wrote the manuscript. All authors contributed to critical reading of the manuscript.

Conflict of Interest Statement

Under a licensing agreement between Life Technologies Corporation and the Johns Hopkins University (JHU), E.T.Z. is entitled to a share of royalty received by the University for licensing of stem cells. The terms of this arrangement are managed by JHU in accordance with its Conflict of Interest policies. This does not alter authors' adherence to journal policies on sharing data and materials. Requests for CB-iPSC6.2 and KA.1 cell lines should be addressed to E.T.Z. (ezambid1@jhmi.edu). The rest of the authors declare no competing financial interests.

Many forms of blindness result from the dysfunction or loss of retinal photoreceptors. Induced pluripotent stem cells (iPSC) hold great potential for the modeling of these diseases or as potential therapeutic agents. However, to fulfill this promise, a remaining challenge is to induce human iPSC to recreate *in vitro* key structural and functional features of the native retina, in particular the presence of photoreceptors with outer-segment discs and light-sensitivity. Here we report that hiPSC can, in a highly autonomous manner, recapitulate spatiotemporally each of the main steps of retinal development observed *in vivo* and form 3-dimensional retinal cups that contain all major retinal cell types arranged in their proper layers. Moreover, the photoreceptors in our hiPSC-derived retinal tissue achieve advanced maturation, showing the beginning of outer-segment-disc formation and photosensitivity. This success brings us one step closer to the anticipated use of hiPSC for disease modeling and open possibilities for future therapies.

Introduction

Many retinal degenerative diseases are characterized by the dysfunction and death of photoreceptor cells, leading to vision loss and eventually total blindness^{1–3}. Despite decades of research, there is currently no cure for these diseases. The establishment of human induced pluripotent stem cell (hiPSC) technology generated considerable excitement due to its potential for developing *in vitro* biological models and, eventually, therapeutic treatments for such diseases^{4–9}. However, it is still unclear to what extent hiPSC may be capable of recapitulating *in vitro* the cellular and molecular features of the native retina, especially regarding photoreceptor differentiation and functional maturation.

Several studies have shown that, under specifically defined culture conditions, embryonic stem (ES) and induced pluripotent stem (iPS) cells can be induced to differentiate along a retinal lineage, including differentiation into photoreceptors^{10–19}. Moreover, it has recently been shown that mouse and human ES cells can develop into a three-dimensional optic cup in culture that remarkably resembles the embryonic vertebrate eye^{20,21}. Notwithstanding, the structural and molecular characteristics of advanced photoreceptor differentiation, including the formation of outer-segment discs – an essential structural feature for photoreceptor function – have yet to occur *in vitro*^{6–9}. Perhaps as a consequence, no photoreceptor-light response has been observed in such cultures either. Finally, it remains to be determined whether iPSC can recreate the three-dimensional histo-architecture of the neural retina *in vitro* beyond a rudimentary stratification²².

Retinal cell differentiation *in vivo* takes place through sequential cell-fate specification steps, within a very dynamic and complex microenvironment involving highly coordinated cell-cell interactions through direct contact or diffusible signals^{23,24}. Accordingly, in most published studies, differentiation of ES or iPS cells into retinal cells *in vitro* required an elaborate regime of exogenous factors^{10–13,15,16,18,20,21,25–27}. Some studies, however, suggest that human ES and iPS cells have a certain propensity to differentiate into a retinal lineage^{14,19,22,28,29}.

Here, we have succeeded in inducing human iPSC to recapitulate the main steps of retinal development and to form fully laminated 3-dimensional retinal tissue by exploiting the intrinsic cues of the system to guide differentiation (Supplementary Fig. 1). Moreover, the

photoreceptors in our preparations begin to develop outer-segment discs and reach the stage of photosensitivity. This highly autonomous system provides a powerful platform for developmental, functional, and translational studies.

Results

Self-organized Eye Field Domains

Eye development in the embryo's neural plate begins with the formation of the eye field (EF), a centrally-organized domain consisting of a subpopulation of anterior neuroepithelial cells that have become further specified into retinal progenitors^{23,30} (Supplementary Fig. 1a). The EF is characterized by the expression of a group of transcription factors that includes PAX6, RX, LHX2, SIX3, and SIX6, while the surrounding anterior neuroepithelial cells express PAX6 and SOX1³⁰⁻³³. In parallel to the native events, our hiPSC-derived aggregates, after 8 days of differentiation (D8) in a chemically-defined neural-differentiation medium^{14,22,29} and attached on Matrigel-coated culture dishes (see Methods for details), acquired an anterior-neuroepithelial fate expressing PAX6 and SOX1 (Figure 1a-c). Soon after, retinal progenitor cells expressing LHX2 appeared in the central region of the differentiating aggregates, concomitantly with a down-regulation of SOX1 expression (Figure 1d). By D12, EF-like domains with their characteristic flat, tightly-packed appearance could be observed, surrounded by anterior neuroepithelial cells (Figure 1e-f). Retinal progenitor cells within the EF domains lacked expression of SOX1 (Figure 1f) and co-expressed the EF transcription factors PAX6, LHX2, and RX (Figure 1g-h). The surrounding anterior neuroepithelial cells expressed SOX1 and PAX6 but were negative for LHX2 or RX, and typically formed rosettes (Supplementary Fig. 2i-l), which, although not found in the native situation, are characteristic of these cells in culture^{14,34}.

The RT-PCR analyses in Figure 1s summarize the temporal sequence of events in our system, showing the gradual loss of pluripotency (downregulation of OCT4), the acquisition of neural fate (sustained SOX2 expression, and appearance of PAX6), and the progressive differentiation into retinal progenitors. Interestingly, the chronology of expression of the eye-field transcription factors mimicked the *in vivo* situation, with initial expression of PAX6 and SIX3, followed by LHX2 and RX, and eventually SIX6^{30,31}. Thus, without the need of a regime of exogenous factors, hiPSC were able to differentiate into retinal progenitors that self-organized into EF-like domains surrounded by anterior neuroepithelial-like cells, presenting a cellular organization closely resembling the embryonic anterior neural plate where the EF forms *in vivo*.

Self-driven differentiation into NR and RPE

The EF *in vivo* gives rise to the left and right optic vesicles, with their respective retinal progenitors eventually forming the future neural retina (NR) and retinal pigment epithelium (RPE) (Supplementary Fig. 1a). Cell-fate specification into either NR or RPE is regulated critically by two transcription factors, VSX2 and MITF, which initially are co-expressed in the bipotent progenitor cells but subsequently become restricted to the NR and RPE, respectively^{23,35,36}. Again, as in the native situation, the cells within the EF-like domains in our cultures followed the same differentiation sequence; namely, these cells initially

expressed both VSX2 and MITF (Figure 1i), but subsequently segregated into a central NR-like domain expressing PAX6, LHX2, RX and VSX2 (Figure 1j–l; Supplementary Fig. 2a–d), and a peripheral RPE-like domain expressing MITF and PAX6 (Figure 1, l; Supplementary Fig. 1e). Between D17 and D25 in culture, these NR and RPE domains transitioned to an optic-cup-like structure, with the NR progressively acquiring a horseshoe-dome shape reminiscent of the inner wall of the optic cup, surrounded by the RPE (Figure 1m–q; Supplementary Fig. 1f and 2e–h).

Similar results were obtained from three different hiPSC lines (IMR90-4³⁷; CB-iPSC6.2³⁸; KA.1³⁹; Supplementary Table 1) with the efficiency of NR-domain formation in D20 being $85.0 \pm 3.0\%$, $88.3 \pm 3.5\%$ and $62.3 \pm 4.6\%$, respectively (Figure 1r). Thus, in our cultures, retinal progenitors in the EF domains underwent spontaneous differentiation into NR and RPE efficiently and reproducibly, closely mimicking their *in vivo* topological organization.

Formation of 3-D retinal cups and self-lamination

The optic-cup-like shape of the NR domains in our cultures made them easily identifiable and amenable to individual mechanical detachment and collection for further culture in suspension (Figure 2a; Supplementary Fig. 3 and Methods for details). The NR domains, collected on D21–D28, had a high enrichment of NR progenitors ($71.0 \pm 7.3\%$ VSX2-positive cells vs. $19.0 \pm 7.2\%$ MITF-positive cells, mean \pm SD; Figure 2b) and, when cultured in suspension, formed 3-D retinal cups with an efficiency ranging from 50% to 70% (3 independent experiments with over 100 NR domains/experiment). The retinal cup comprised a thick, transparent NR that was continuous with the adjacent RPE, which appeared bundled at the tip of the retinal cup and became gradually pigmented (Figure 2c–d). From the time of NR-domain collection to D35 (Week 5, or W5), the NR presented molecular and histological features resembling the actual features of the human embryonic retina at the same age⁴⁰, including a polarized, pseudostratified epithelium with proliferating cells undergoing interkinetic nuclear migration and expressing the appropriate transcription factors (Figure 2e–k and Supplementary Movie 1). During W5–W7, the NR cells spontaneously began to differentiate, following the characteristic center-to-periphery wave of neurogenesis and migrating to their corresponding retinal layers (Figure 3).

Recapitulation of *in vivo* NR differentiation

In order to promote cell survival beyond W7, the culture medium was supplemented with fetal bovine serum (FBS), taurine and retinoic acid until W17, at which time further slight modifications (less retinoic acid and replacement of the neurobasal supplement B27 by N2) were made to induce photoreceptor maturation (see Methods for details). These conditions allowed the retinal cups to maintain their shape and steady growth (with the longest axis increasing from 0.4 ± 0.1 mm on D45 to 0.7 ± 0.1 mm on D90, mean \pm SD) (Figure 4a–e) and to develop distinguishable layers containing all major retinal cell types, including Müller cells (Figure 4 f–j). Ganglion cells first appeared in W5 (Figure 3d) and over time increased in number and migrated toward the emerging ganglion cell layer (Figure 5a–c and e–g), which became well-established by W12–13 (Figure 5d), sometimes including a developing nerve-fiber-like layer (Figure 5h). Photoreceptors (expressing OTX2) appeared during W7 and, over the subsequent weeks, populated the developing outer nuclear layer (where

photoreceptor cell bodies are situated in the mature retina) and expressed recoverin, a well-known phototransduction protein (Figure 5a–c and e–g). Amacrine cells (expressing AP2 α) and horizontal cells (expressing PROX1) also appeared during W7 (Figure 5i). As time progressed, amacrine and horizontal cells became numerous, and began to segregate to their corresponding layers (Figure 5j–l). By W21, the retinal cups presented a well-organized outer nuclear layer, adjoining a developing outer plexiform layer expressing the synaptic-vesicle protein, SV2 (Figure 5m–n). Rod opsin was also detectable in the distal part of photoreceptor cells (Figure 5o). Finally, a developing bipolar cell layer containing postmitotic, VSX2-expressing bipolar cells appeared after W22 (Figure 5p). This spatiotemporal pattern of differentiation closely mimics that of the vertebrate retina^{41,42} and was observed in all of the retinal cups examined (~60) derived from the three different hiPSC lines used (Figure 5q and Supplementary Fig. 4).

Rod-dominant ONL with highly differentiated rods and cones

Although photoreceptors expressed detectable levels of rod opsin in the culture conditions described above, further developmental maturation including the formation of outer-segment discs did not appear to progress. Additionally, expression of L/M- and S-cone opsins was not apparent. Because retinoic acid has been shown to influence photoreceptor differentiation in a time- and concentration-dependent manner⁴³, we reasoned that prolonged exposure to a relatively high retinoic-acid concentration (1 μ M retinoic acid in W7-W17) might hamper photoreceptor maturation. Accordingly, we tested two shorter time windows of retinoic-acid exposure (W7-W14 and W10-W14, both with 1 μ M retinoic acid) in CB-iPSC6.2-derived retinal cups (Figure 6). The W10-W14 condition induced, already at W17, the appearance of dispersed cells showing high rod-opsin expression not only in the distal part of the immature photoreceptors but also in their cell bodies, as seen in native development⁴⁴ (observed in ~33% of the retinal cups, n=12; Figure 6a and Figure 7a–c). Moreover, we also began to observe S-opsin expression in some photoreceptors not expressing rod opsin (Figure 7d). By W21, 90% of the hiPSC-derived retinal cups (n=20) showed a significant increase in the number of photoreceptors expressing rod opsin, organized in patches throughout the outer nuclear layer or even encompassing the full extent of this layer (Figure 7e). Photoreceptors expressing L/M- or S-opsins were also observed (Figure 7f–i). The morphologies of the rods and cones and the localization of their cell bodies, with cones at the outer edge and rods toward the inner edge of the outer nuclear layer, resembled remarkably the native situation⁴⁴ (Figure 7g–i and Supplementary Movie 2). The photoreceptors showed bud-like structures at their distal tip reminiscent of the short nascent outer segments at comparable developmental stages in the human retina^{44–46} (Figure 7 g–i; and Supplementary Movie 2). Rarely, elongated structures resembling more advanced native outer segments were seen in W25 (arrow in Figure 7j). A similar pattern of photopigments expression was observed in RCs derived from the three cell lines tested upon W10-W14 RA treatment (Figure 6b–g), albeit with different efficiencies as evaluated for rod-opsin expression at W21 (90%, 47% and 38% of cups from CB.iPSC6.2 (n=20), IMR90-4 (n=22) and KA.1 (n=8) respectively).

Acquisition of functional photoreceptors

Possibly one of the most challenging and still unresolved issues is whether photoreceptors derived from ES and/or iPS cells *in vitro* are capable of achieving functional maturation, i.e., forming outer segment and responding to light⁶⁻⁹. We thus set out to evaluate these events in our system. During W27-W28, several ultrastructural features were revealed by electron microscopy, including an outer limiting membrane, inner segments with numerous mitochondria, and basal bodies with connecting cilia having a photoreceptor-specific microtubule arrangement (Figure 7 k-m). Although at low frequency, some photoreceptors also showed intracellular membrane discs reminiscent of the outer-segment discs in native photoreceptors (Figure 7n and Supplementary Fig. 1j; average of developing outer-segment-disc-stacks observed: 2 per 150 μ m of ONL length; n=4 ultra-thin sections). All of these features were very similar to those observed in the developing human retina^{47,48}. Perhaps more importantly, several key proteins involved in rod phototransduction were expressed in the photoreceptors of W25 hiPSC-derived retinal cups, including the α -subunit of rod transducin ($G_{T1\alpha}$), the α - and β -subunits of the rod cGMP-phosphodiesterase ($PDE6_{\alpha\beta}$), the rod cyclic-nucleotide-gated-channel α -subunit (CNGA1) and β -subunit (CNGB1), and retinal guanylate cyclase 1 (RetGC1) (Figure 8a-i). These proteins increased in expression over time in parallel to rod opsin, as in native human retina⁴⁴ (Supplementary Fig. 5a-i).

To determine if the photoreceptors in our retinal cups had the ability to respond to light, we conducted perforated-patch recordings in the voltage-clamp mode from the putative rod cells in W25-W27 hiPSC-derived retinal cups. We found 2 out of 13 randomly chosen cells to respond to a light flash (Figure 8j; an unresponsive cell is shown in Figure 8k). Considering that in these samples the outer segments were just beginning to appear (as inferred from the ultrastructural features described above), the infrequent encounter of light-responsiveness is not too surprising. The light response consisted of an outward current (equivalent to the reduction of a steady inward current in darkness, similar to the situation in native rods), and the speed of the response's rising phase also resembled that of the native response. The photosensitivities of the two responsive cells were much lower than those observed in adult-primate photoreceptors⁴⁹, likely because the rod opsin level was still low and the downstream phototransduction steps were still maturing⁵⁰⁻⁵². Repeated flashes failed to elicit further responses, perhaps because of functional depletion of the nascent phototransduction components. In darkness, a steady inward current was observed in practically all 13 cells recorded, and the two photoresponsive cells happened to have large inward currents (Figure 8 l) (see also Ref. #30 for a cGMP-induced current in their preparations). The implication of the typically larger inward current of the photoresponsive cells is at present unclear because the current at this stage may have more than one component.

Compared to the progressive maturation of photoreceptors, most ganglion cells and amacrine cells, on the other hand, gradually disappeared from the advanced cultures, presumably because they needed additional factors for their long-term survival.

Discussion

We have established a simple and efficient strategy for inducing hiPSC to differentiate almost autonomously into three-dimensional retinal tissue *in vitro*, with spatial and temporal features that replicate the development of the human retina *in vivo*. Furthermore, the photoreceptors in our system are able to reach an advanced stage of maturation, up to at least the beginning of outer-segment formation and of photosensitivity. To our knowledge, this is the first demonstration that such a developmental step can be achieved *in vitro*.

Differentiation of ES and iPS cells into retinal cells *in vitro* most commonly requires the use of extrinsic chemical factors to modulate specific signaling pathways, and to mimic the *in vivo* microenvironment where retinal cell specification normally occurs. In such protocols, the induction of retinal progenitor fate is achieved by adding combinations of BMP, Wnt, Nodal and Notch pathway inhibitors (such as Noggin, Dkk1, LeftyA and DAPT), several growth factors (including IGF1, bFGF, activin, SHH and T3), and serum^{10–13,15,16,26,27}. Further differentiation into photoreceptors has additionally required exposure to native retinal cells in co-culture systems or to several exogenous factors including Noggin, Dkk1, DAPT, IGF1, aFGF, bFGF, T3, SHH, retinoic acid and taurine^{10–13,15,16,26,27}. Similarly, the recent derivation of optic-cup-like structures from human ES cells required an elaborate differentiation strategy involving initial dissociation followed by reaggregation of hESC and a rigorous regime of exogenous factors and long-term culture under high-oxygen conditions²¹. Conversely, Meyer et al. reported the ability of select human ES and iPS cell lines to differentiate into retinal progenitor cells without the need of exogenous factors¹⁴. These cells in turn were capable of forming optic vesicle-like structures with rudimentary lamination^{22,29}. Building on these observations, here we succeeded in establishing a system in which, without requiring extrinsic signaling modulators, human iPS cells differentiate into retinal progenitors and subsequently form three-dimensional retinal cups capable of recreating the full histo-architecture of the native retina. Serum, taurine and retinoic acid are added at later times to promote cell survival, allowing spontaneous differentiation to proceed in a prolonged manner.

Stem-cell-derived retinal progenitors in two-dimensional conditions have been shown to generate only certain retinal cell types, such as RPE, ganglion and photoreceptor cells, and they are most often found within mixed cell populations lacking tissue architectural features^{10–13,15,16,26}. On the other hand, the human stem-cell-derived 3-D retinal tissues reported to date, showed relatively organized ganglion and outer nuclear layers with an intermediate layer mostly containing retinal precursors^{21,22}. Sparse interneuron precursors representing horizontal and/or amacrine cells were also seen, but bipolar and Müller cells were lacking as well as clearly defined amacrine, horizontal, bipolar, and plexiform layers^{21,22}. In contrast, human iPSC-derived retinal progenitors within our 3-D retinal cups generated all major retinal cell types, including neurons (ganglion, amacrine, horizontal, bipolar, rod and the three types of cones) and Müller glial cells, all arranged in their proper layers.

Taken together our results suggest that, under appropriate conditions, hiPSC have the potential to re-create a “retina-differentiation niche” sufficient for inducing fully specified

retinal progenitor cells capable of originating the entire repertoire of retinal cell types while recapitulating in time and space the development of the human retina. We speculate that physical microenvironmental cues (especially cell-cell and cell-extracellular matrix interactions^{18,53,54}) at the initial stages of hiPSC differentiation are key to the establishment of this retina-differentiation niche.

Further evidence of the potential of hiPSC to re-enact retinal developmental processes in our system comes from the ability of hiPSC-derived photoreceptors to form outer-segment-discs and elicit a light response, events that have not been achieved *in vitro* until our present study. The onset of outer-segment disc morphogenesis in the developing human retina occurs around fetal week (Fwk) 23–25, resulting in a small number of photoreceptors bearing bud-like outer-segment precursors^{45,46}. The number of outer segment precursors *in vivo* slowly increases over the following weeks, and outer segment elongation does not start until about Fwk 32⁵⁵. This is in agreement with the relatively infrequent observation of developing outer-segment discs in our samples at W27-W28. Assuming that the development of light-responsiveness parallels that of the outer segment, as previous studies have shown^{50,51,56}, our infrequent observation of the light response is to be expected. There is no published information regarding the appearance of the light response in pre-term human fetus for comparison to our functional observation; electroretinographic recordings have been made only from human infants beginning at a few days post-birth^{51,52}. Nonetheless, the studies in infants show that immature photoreceptors have a significantly lower sensitivity to light compared to those in the adult, associated to their lower concentrations of rhodopsin and other phototransduction proteins, and their shorter outer segments^{51,52,57}.

The advanced level of maturation of the hiPSC-derived photoreceptors in our cultures might result from the combined effects of the fairly autonomous three-dimensional differentiation, the temporally-extended culture, and the timing/period of exposure to retinoic acid. A contribution from a cell-line-dependent effect, as observed in other studies^{29,58}, cannot be ruled out, considering the differences in efficiency of Rod-opsin expression among the three cell lines tested. The importance of the native microenvironment on stem-cell-derived photoreceptor differentiation is supported by previous work using co-culture systems or subretinal transplantation^{10,11,15,17}. In our system, the lack of extrinsic factors at the early stages of differentiation (which, while promoting a particular fate may also hinder other aspects of the developmental potential of the cells), and the three-dimensional-tissue organization achieved, may contribute to creating a microenvironment very similar to that found within the native retina and to trigger the innate developmental programs leading to photoreceptor functional differentiation. This is further supported by the time-dependent effect of retinoic acid on photoreceptor differentiation observed in our cultures, which correlates with a similar effect in the *in vivo* vertebrate retina^{43,59}. Our culture conditions also permitted growth of the 3-D retinal cups for a significantly longer time period compared to previous 3-D systems^{21,22} while preserving their histological features, thus allowing cells to reach a developmental stage comparable to that at which functional maturation of the photoreceptors begins in the human retina^{45,46,55}.

It is interesting that, in our cultures, a relatively advanced photoreceptor differentiation was achieved without physical contact with the RPE, since the RPE in our samples was bundled at the tip of the retinal cup far away from the photoreceptors containing developing outer segments (we did not observe RPE, pigmented or non-pigmented, lining the apical surface of the NR at any time during differentiation, as evaluated by morphology, immunohistochemistry and TEM). Previous studies have indicated that RPE-photoreceptor cell contact and RPE-secreted factors are both important for photoreceptor differentiation and maturation^{60–65}. While the presence of diffusible RPE-derived factors in our cultures might have contributed to recreating a native-like environment propitious for photoreceptor differentiation, our observations suggest that physical contact with the RPE may not be required at least up to the beginning of their functional maturation.

Finally, our system provides an *in vitro* model of human retina development where each of the main developmental stages can be easily identified by their morphology and independently manipulated. Furthermore, the success here with human iPSC opens up many exciting possibilities in establishing *in vitro* models for human eye diseases, including those associated with different aspects of photoreceptor functionality, and hopefully will also take potential therapeutic applications one step closer to reality.

Methods

hiPSC culture

Three hiPSC lines, IMR90-4³⁷ (WiCell), CB-iPSC6.2³⁸ and KA.1^{39,66}, were used in this study (Supplementary Table 1). All cell lines were obtained with verified normal karyotype and contamination-free. hiPSC were maintained on Matrigel (growth-factor-reduced; BD Biosciences) coated plates with mTeSR1 medium (Stemcell Technologies) according to WiCell protocols. Cells were passaged every 5–7 days at approximately 80% confluence. Colonies containing clearly visible differentiated cells were marked and mechanically removed before passaging. The use of human iPSC cells in this study conforms to The Johns Hopkins Institutional Stem Cell Research Oversight (ISCRO) Committee.

Early stages of retinal differentiation

The procedure to induce early stages of retinal differentiation was based on a previously described protocol with major modifications^{14,22,29}. Briefly, on day 0 (D0) of differentiation, hiPSC were enzymatically detached by dispase treatment, dissociated into small clumps, and cultured in suspension with mTeSR1 medium and 10 μM Blebbistatin (Sigma) to induce aggregate formation. Aggregates were gradually transitioned into neural-induction medium (NIM) containing Dulbecco's modified eagle medium (DMEM)/F12 (1:1), 1% N2 supplement (Invitrogen), 1x minimum essential media-non essential amino acids (NEAA), 2 $\mu\text{g ml}^{-1}$ heparin (Sigma), by replacing the medium with a 3:1 ratio of mTeSR1/NIM on D1, 1:1 on D2, and 100% NIM on D3. On D7, aggregates (average size of 0.22 ± 0.05 mm) were seeded onto Matrigel (growth-factor-reduced; BD Biosciences) coated dishes containing NIM at an approximate density of 20 aggregates per cm^2 , and switched to DMEM/F12 (3:1) supplemented with 2% B27 (without vitamin A, Invitrogen),

1x NEAA, and 1% antibiotic-antimycotic (Gibco) on D16. Thereafter, the medium was changed daily.

Formation of 3-D Retinal Cups

On the 4th week of differentiation, horseshoe-shaped neural retina (NR) domains were manually detached with a sharpened Tungsten needle under inverted microscope, collected and cultured in suspension at 37 °C in a humidified 5% CO₂ incubator in DMEM/F12 (3:1) supplemented with 2% B27, 1x NEAA, and 1% antibiotic-antimycotic, where they gradually formed 3-dimensional retinal cups (RCs). Thereafter, the medium was changed twice a week. For long-term suspension culture, the medium was supplemented with 10% fetal bovine serum (FBS; Gibco), 100 μM Taurine (Sigma) and 2mM GlutaMAX (Invitrogen) beginning on D42 unless otherwise noted.

Retinoic acid treatment

To promote photoreceptor maturation, suspension cultures of RCs were supplemented daily with 1 μM all-trans retinoic acid (RA; Sigma) at various time windows: W7-W17; W7-W14 or W10-W14; subsequently, RA concentration was decreased to 0.5 μM.

Immunohistochemistry

Cells growing on adherent conditions were fixed in 4% paraformaldehyde (PFA; Sigma) for 15 min. RCs were fixed in 4% PFA for 30 min. A human eyeball from a 71-year old person affected by age-related macular degeneration (Old Dominion Eye Foundation) was fixed in 4% PFA for 4 hr. Tissue cryopreservation, sectioning, and immunohistochemistry were performed as previously described⁶⁷. Antibodies against the following proteins were used at the indicated dilutions: LHX2 (goat, 1:200, Santa Cruz, sc-19344), RX (Rabbit, 1:500, Abcam, ab86210), SOX1 (goat, 1:1000, R&D, AF3369), VSX2 (sheep, 1:500, Millipore, AB9016), OTX2 (rabbit, 1:500, Millipore, AB9566), recoverin (REC, rabbit, 1:500, Millipore, AB5585), Caspase 3 (rabbit, 1:500, Cell Signaling, asp175), HU C/D (mouse, 1:200, Molecular Probes, MP21271), BRN3 (goat, 1:1000, Santa Cruz, sc-6026X), TUJ1 (Rabbit, 1:2000, Covance, MRB-435P), MITF (mouse, 1:50, NeoMarkers, MS-771-P1), PROX1 (Rabbit, 1:2000, Millipore, AB5475), CRALBP (mouse, 1:500, Abcam, ab15051), rod opsin (mouse, 1:100, gift from Dr. David Hicks), L/M-opsin (rabbit, 1:50,000, gift from Dr. Jeremy Nathans), S-opsin (rabbit, 1:50,000, gift from Dr. Jeremy Nathans), phosphodiesterase 6 alpha (PDE6α, rabbit, 1:1000, Abcam, ab5659) and beta (PDE6β, rabbit, 1:2000, Thermo Scientific, PA1-722), human retinal guanylate cyclase 1 (RetGC1, rabbit, 1:4000, gift from Dr. Alexander M. Dizhoor), G_{T1α} (rabbit, 1:2000, Santa Cruz, sc-389), rod cyclic-nucleotide-gated- channel α-subunit (CNGA1, mouse, 1:10, a gift from Dr. Robert S. Molday) and β-subunit (CNGB1, mouse, 1:10, a gift from Dr. Robert S. Molday). Antibodies from the DSHB, developed under the auspices of the NICHD and maintained by The University of Iowa, Department of Biology, were: PAX6 (mouse, 1:50), AP2α (3B5a, mouse, 1:35), and SV2 (mouse, 1:1000). Secondary antibodies used included the corresponding species-specific Alexa Fluor-488, -546 and -647 conjugated antibodies (1:500, Molecular Probes). DAPI was used for nuclear counterstaining (Molecular Probes). Fluorescence images were acquired with an LSM 510 confocal microscope (Zeiss).

Detection of proliferating cells

Click-iT EdU imaging kit (Invitrogen, C10337) was used according to the manufacturer's protocol in order to visualize cells undergoing S-phase during the time-window under study. 3-D RCs were incubated with 50 μ g of EdU diluted in PBS for 1hr or 20 hr, then collected and processed for microscopic imaging. An antibody against the DNA replication licensing factor MCM2 (rabbit, 1:1000, Abcam, ab4461) was used to identify proliferating retinal progenitors, whereas an antibody against Phospho-Histone H3 (PH3, rabbit, 1: 250, Cell Signaling, #9701L) was used to identify cells in M phase by immunohistochemistry as described above.

RT-PCR

Total RNA isolation was done in triplicate with RNAeasy mini kit (Qiagen) and followed by DNase I treatment (Qiagen) to remove potential DNA contamination. RNA quality was evaluated using a NanoDrop1000 spectrophotometer (Thermo Scientific). Reverse transcription was performed using the SuperScript III RT-PCR kit (Invitrogen). Samples without reverse transcriptase were used as negative controls. PCR was performed with Taq DNA polymerase (Invitrogen) on a PTC-200 Thermal Cycler (Bio-Rad). Cycles (30–40 depending on primer pair) were run at 95°C denaturation for 20 s, 60°C annealing for 20 s, and 72°C extension for 30 s. Subsequent PCR products were run on 2% agarose gels. Primers used were as follows: *OCT4* forward 5'-CGAGCAATTTGCCAAGCTCCTGAA-3', reverse 5'-TCGGGCACTGCAGGAACAAATTC-3'; *SOX2* forward 5'-CCCCCGGCGGCAATAGCA-3', reverse 5'-TCGGCGCCGGGGAGATACAT-3'; *PAX6* forward 5'-CGGAGTGAATCA GCTCGGTG-3', reverse 5'-CCGCTTATACTGGGCTATTTTGC-3'; *SIX3* forward 5'-CCGGAAGAGTTGTCCATGTT -3', reverse 5'-CGACTCGTGTGTTTGTGATGG -3'; *LHX2* forward 5'-CAAGATCTCGGACCGCTACT-3', reverse 5'-CCGTGGTCAGCATCTTGTTA-3'; *RX* forward 5'-GAATCTCGAAATCTCAGCCC-3', reverse 5'-CTTCACTAATTTGCTCAGGAC-3'; *SIX6* forward 5'-ATTTGGGACGGCGAACAG AAGACA-3', reverse 5'-ATCCTGGATGGGCAACTCAGA TGT-3'; *GAPDH* forward 5'-ACCACAGTCCATGCCATCAC-3', reverse 5'-TCCACCACC CTGTTGCTGTA-3'.

Flow cytometry

Neural retina-domains (NR) collected on D22 from two biological replicates were dissociated into single cells with trypsin, fixed in 1% PFA for 15 minutes, washed with PBS containing 0.04% triton-X-100 and 2% donkey serum, and then incubated for 1hr at RT in primary antibodies at a concentration of 1 μ g of antibody per 1 million cells in PBS with 0.25% triton-X-100 and 2% donkey serum. Cells were then incubated with species-specific Alexa Fluor-488 conjugated secondary antibodies for 30min, washed, and analyzed using a BD Accuri C6 Flow Cytometer (BD Pharmingen). In all experiments, nonspecific, species-appropriate isotype antibodies were used as controls. Data analysis was performed using BD Accuri C6 software.

Ultrastructural analysis

hiPSC-derived RCs were fixed in a cold, phosphate-buffered, 2.5% glutaraldehyde/2% paraformaldehyde mixture, post-fixed in 1% osmium tetroxide, dehydrated and embedded in Epon 812. Semi-thin sections were cut for orientation, and ultra-thin sections (68 nm thickness) were cut and stained with uranyl acetate and lead citrate and examined using a transmission electron microscope (Hitachi H7600). For quantification of developing outer-segment-disc-stacks, areas showing the apical side of the ONL were imaged at low magnification (X 1,000) and the length of the ONL was measured. Developing-outer-segment-discs-stacks within these areas were identified at higher magnification (X 20,000). Four serial ultra-thin sections from a W27 CB-iPSC6.2-derived retinal cup were analyzed. Results are expressed as the average number of developing outer-segment-discs-stacks per 150 μm of ONL length.

Live-cell imaging

hiPSC-derived RCs were placed in a 1 mm-gap electroporation cuvette with a plasmid solution (2.3 $\mu\text{g}/\mu\text{l}$ of pCIG plasmid expressing nuclear GFP⁶⁸ in PBS) and 4 square pulses of 15 V, 50-ms duration, and 950-ms interval were delivered using an ECM 830 electroporation apparatus (BTX, Holliston, MA, USA). Immediately after electroporation, RCs were returned to the cell-culture incubator for 36 hr, at the end of which time-lapse microscopy imaging was performed at 2-hr intervals for 48 hr using an LSM 710 confocal laser scanning system (Zeiss) equipped with temperature and CO₂ control.

Electrical recordings from photoreceptors in RCs

In room light, CB-iPSC6.2-derived RCs (age W25-W27) were embedded in low-melting agarose gel and sliced into 100- μm -thick slices with a vibratome (Leica VT1000S). Then, in darkness, the eyecup slices were transferred to RC culture medium containing 100- μM 9-cis-retinal (a commercially available analog of 11-cis-retinal) and incubated for 1 hr in a light-proof, 95% O₂ / 5% CO₂ cell-culture incubator at 37°C. Afterwards, the RC slices, still under light-proof conditions, were transferred and mounted laterally in the recording chamber. All procedures afterwards were performed in infrared or dim-red light. Perforated-patch recordings were performed at 35–37 °C on a Zeiss upright microscope equipped with infrared DIC optics and imaging. The bath solution (Ames medium equilibrated with 95% O₂/5% CO₂) was temperature-controlled and ran at ~5 ml/min through the 1-ml experimental chamber. All recordings were in the voltage-clamp mode with V_{hold} at -50mV, low-pass filtered at 20 Hz (8-pole Bessel) and sampled at 500 Hz. The pipette solution contained (in mM): 110 KCl, 13 NaCl, 2 MgCl₂, 1 CaCl₂, 10 EGTA, 10 HEPES, 0.125 Amphotericin B, pH 7.2 titrated with KOH. The cells situated at the outer 1–4 layers of cells in the RC slice were chosen for recording because rod-opsin-positive photoreceptors were concentrated in this region. The recorded photoreceptor was stimulated with diffuse white flashes (40-ms duration) from a mercury arc lamp, attenuated with neutral density filters, with intensity calibrated with a radiometer.

Longitudinal analysis of hiPSC differentiation

Formation of NR domains

Aggregates seeded on D7 appeared as colonies under adherent culture conditions. Most colonies had clear boundaries before D20. The percentage of NR domains expressing VSX2 was evaluated by counting the number of VSX2-positive among DAPI-positive colonies on D12, D16 and D20. Colonies containing >5 VSX2-positive cells were considered NR domains. Results represent the average of 3 independent experiments, ~100 colonies per time-point, per cell line, per experiment. To trace the morphological progression of NR and RPE domains, plated aggregates were individually outlined using a microscope objective marker (Nikon) and imaged every other day from D17 to D25 under an inverted microscope (Nikon).

Growth of RCs in long-term culture

RCs were imaged every 15 days from D45 until D90 under inverted microscope with 4x magnification. The length of the longest axis of RCs was measured using Image J. Results represent the average of 15–20 RCs per time point.

Birthdating of retinal cell types

To approximate the time of generation of the major retinal neuronal cell types, a minimum of 5 RCs were collected each week from W5 to W13, then every other week until W17, and once a month thereafter. Cell-type-specific markers were used for immunohistochemical identification as described above.

Evaluation of RA effect on rod-opsin expression

Retinal cups from the same culture batch were randomly assigned to the different treatment conditions. Initial analysis was carried out in CB-iPSC6.2-derived retinal cups by a semi-quantitative approach. Five RCs (three serial sections each) per treatment per time window were processed for immunohistochemical detection of rod opsin. Photoreceptor cells were considered “positive” when rod-opsin expression was clearly seen in the cell body (i.e., cell membrane and/or cytoplasm). Results were expressed as: (–) no positive cells within RCs; (+) dispersed positive cells within RCs; (+++) patches of numerous positive cells within RCs. To compare the efficiency of generating rod-opsin positive photoreceptor cells among the three hiPSC lines used in this study, W21 hiPSC-derived RCs subjected to W10-W14 RA treatment (8 to 22 RCs per cell line) were processed for immunohistochemical staining and analyzed as described above. Results were expressed as the percentage of RCs showing positive rod-opsin photoreceptors.

Supplementary Material

Refer to Web version on PubMed Central for supplementary material.

Acknowledgments

We thank Dr. Hai-Quan Mao and Xingyu Liu for help in establishing hiPSC cultures in the lab; Kyle Wallace and Amelia Verhoeven, for training on the initial differentiation protocol; Dr. Gerard Luty and Rhonda Grebe for

assistance with TEM; Drs. Alexander M. Dizhoor, Robert S. Molday, David Hicks and Jeremy Nathans for providing antibodies; Ruikang Liu, Jennica Kahkejian, Linus Amarikwa, and Fuhua Peng for technical assistance, and all the members of the Canto-Soler's lab for contributions to techniques and discussions. This work was supported by grants to M.V.C.S. from the Maryland Stem Cell Research Fund (MSCRF; 2009-MSCRFE-0120-00 and 2012-MSCRFE-0207-00), The William and Ella Owens Medical Research Foundation, The J. Willard and Alice S. Marriott Foundation, the William & Mary Greve Special Scholar Award from Research to Prevent Blindness, and NIH (EY022631), and by a CORE Grant to Wilmer Eye Institute (EY1765). T.X. was supported by the National Basic Research Program (973 Program) from the Ministry of Science and Technology of China (2013CB967700). E.T.Z. was supported by grants from NIH/NHLBI (U01HL099775) and MSCRF (2011-MSCRFE-II-0008-00; 2007-MSCRFE-II-0379-00). J.S.M. was supported by BrightFocus Foundation (grant G2012027) and Fight for Sight. D.G. was supported by NIH grant R01EY021218 and the Foundation Fighting Blindness Wynn-Gund Translational Research Acceleration Award. K.W.Y. was supported by NIH grant R01EY06837 and the António Champalimaud Vision Award (Lisbon, Portugal).

References

- Hartong DT, Berson EL, Dryja TP. Retinitis pigmentosa. *Lancet*. 2006; 368:1795–1809. [PubMed: 17113430]
- Goodwin P. Hereditary retinal disease. *Current opinion in ophthalmology*. 2008; 19:255–262. [PubMed: 18408503]
- Hamel CP. Cone rod dystrophies. *Orphanet J Rare Dis*. 2007; 2:7. [PubMed: 17270046]
- Viczian AS. Advances in retinal stem cell biology. *J Ophthalmic Vis Res*. 2013; 8:147–159. [PubMed: 23943690]
- Stern JH, Temple S. Stem cells for retinal replacement therapy. *Neurotherapeutics*. 2011; 8:736–743. [PubMed: 21948217]
- Cramer AO, MacLaren RE. Translating induced pluripotent stem cells from bench to bedside: application to retinal diseases. *Curr Gene Ther*. 2013; 13:139–151. [PubMed: 23320477]
- Gamm DM, Phillips MJ, Singh R. Modeling retinal degenerative diseases with human iPS-derived cells: current status and future implications. *Expert Rev Ophthalmol*. 2013; 8:213–216. [PubMed: 24039627]
- Boucherie C, Sowden JC, Ali RR. Induced pluripotent stem cell technology for generating photoreceptors. *Regen Med*. 2011; 6:469–479. [PubMed: 21749205]
- Sasai Y. Next-generation regenerative medicine: organogenesis from stem cells in 3D culture. *Cell Stem Cell*. 2013; 12:520–530. [PubMed: 23642363]
- Ikeda H, et al. Generation of Rx+/Pax6+ neural retinal precursors from embryonic stem cells. *Proc Natl Acad Sci USA*. 2005; 102:11331–11336. [PubMed: 16076961]
- Lamba DA, Karl MO, Ware CB, Reh TA. Efficient generation of retinal progenitor cells from human embryonic stem cells. *Proc Natl Acad Sci USA*. 2006; 103:12769–12774. [PubMed: 16908856]
- Osakada F, et al. Toward the generation of rod and cone photoreceptors from mouse, monkey and human embryonic stem cells. *Nat Biotechnol*. 2008; 26:215–224. [PubMed: 18246062]
- Hirami Y, et al. Generation of retinal cells from mouse and human induced pluripotent stem cells. *Neurosci Lett*. 2009; 458:126–131. [PubMed: 19379795]
- Meyer JS, et al. Modeling early retinal development with human embryonic and induced pluripotent stem cells. *Proc Natl Acad Sci USA*. 2009; 106:16698–16703. [PubMed: 19706890]
- Tucker BA, et al. Transplantation of adult mouse iPS cell-derived photoreceptor precursors restores retinal structure and function in degenerative mice. *PLoS ONE*. 2011; 6:e18992. [PubMed: 21559507]
- Mellough CB, Sernagor E, Moreno-Gimeno I, Steel DHW, Lako M. Efficient stage-specific differentiation of human pluripotent stem cells toward retinal photoreceptor cells. *Stem Cells*. 2012; 30:673–686. [PubMed: 22267304]
- Gonzalez-Cordero A, et al. Photoreceptor precursors derived from three-dimensional embryonic stem cell cultures integrate and mature within adult degenerate retina. *Nat Biotechnol*. 2013; 31:741–747. [PubMed: 23873086]
- Boucherie C, et al. Brief report: self-organizing neuroepithelium from human pluripotent stem cells facilitates derivation of photoreceptors. *Stem Cells*. 2013; 31:408–414. [PubMed: 23132794]

19. Sridhar A, Steward MM, Meyer JS. Nonxenogeneic growth and retinal differentiation of human induced pluripotent stem cells. *Stem Cells Transl Med.* 2013; 2:255–264. [PubMed: 23512959]
20. Eiraku M, et al. Self-organizing optic-cup morphogenesis in three-dimensional culture. *Nature.* 2011; 472:51–56. [PubMed: 21475194]
21. Nakano T, et al. Self-formation of optic cups and storable stratified neural retina from human ESCs. *Cell Stem Cell.* 2012; 10:771–785. [PubMed: 22704518]
22. Phillips MJ, et al. Blood-derived human iPSC cells generate optic vesicle-like structures with the capacity to form retinal laminae and develop synapses. *Invest. Ophthalmol. Vis. Sci.* 2012; 53:2007–2019. [PubMed: 22410558]
23. Adler R, Canto-Soler MV. Molecular mechanisms of optic vesicle development: complexities, ambiguities and controversies. *Dev Biol.* 2007; 305:1–13. [PubMed: 17335797]
24. Bassett EA, Wallace VA. Cell fate determination in the vertebrate retina. *Trends Neurosci.* 2012; 35:565–573. [PubMed: 22704732]
25. Osakada F, et al. In vitro differentiation of retinal cells from human pluripotent stem cells by small-molecule induction. *J Cell Sci.* 2009; 122:3169–3179. [PubMed: 19671662]
26. Lamba DA, et al. Generation, purification and transplantation of photoreceptors derived from human induced pluripotent stem cells. *PLoS ONE.* 2010; 5:e8763. [PubMed: 20098701]
27. Tucker BA, et al. Patient-specific iPSC-derived photoreceptor precursor cells as a means to investigate retinitis pigmentosa. *Elife.* 2013; 2:e00824. [PubMed: 23991284]
28. Aoki H, Hara A, Niwa M, Yamada Y, Kunisada T. In vitro and in vivo differentiation of human embryonic stem cells into retina-like organs and comparison with that from mouse pluripotent epiblast stem cells. *Dev Dyn.* 2009; 238:2266–2279. [PubMed: 19544586]
29. Meyer JS, et al. Optic vesicle-like structures derived from human pluripotent stem cells facilitate a customized approach to retinal disease treatment. *Stem Cells.* 2011; 29:1206–1218. [PubMed: 21678528]
30. Zuber ME, Gestri G, Viczian AS, Barsacchi G, Harris WA. Specification of the vertebrate eye by a network of eye field transcription factors. *Development.* 2003; 130:5155–5167. [PubMed: 12944429]
31. Zuber ME. Eye field specification in *Xenopus laevis*. *Curr Top Dev Biol.* 2010; 93:29–60. [PubMed: 20959162]
32. Pevny LH, Sockanathan S, Placzek M, Lovell-Badge R. A role for SOX1 in neural determination. *Development.* 1998; 125:1967–1978. [PubMed: 9550729]
33. Zhang X, et al. Pax6 is a human neuroectoderm cell fate determinant. *Cell Stem Cell.* 2010; 7:90–100. [PubMed: 20621053]
34. Xia X, Zhang S-C. Differentiation of neuroepithelia from human embryonic stem cells. *Methods Mol Biol.* 2009; 549:51–58. [PubMed: 19378195]
35. Nguyen M, Arnheiter H. Signaling and transcriptional regulation in early mammalian eye development: a link between FGF and MITF. *Development.* 2000; 127:3581–3591. [PubMed: 10903182]
36. Horsford DJ, et al. Chx10 repression of Mitf is required for the maintenance of mammalian neuroretinal identity. *Development.* 2005; 132:177–187. [PubMed: 15576400]
37. Yu J, et al. Induced pluripotent stem cell lines derived from human somatic cells. *Science.* 2007; 318:1917–1920. [PubMed: 18029452]
38. Burridge PW, et al. A universal system for highly efficient cardiac differentiation of human induced pluripotent stem cells that eliminates interline variability. *PLoS ONE.* 2011; 6:e18293. [PubMed: 21494607]
39. Park TS, et al. Growth factor-activated stem cell circuits and stromal signals cooperatively accelerate non-integrated iPSC reprogramming of human myeloid progenitors. *PLoS ONE.* 2012; 7:e42838. [PubMed: 22905176]
40. O'rahilly, R.; Muller, F. *Developmental Stages in Human Embryos.* Carnegie Institution of Washington: 1987.
41. Prada C, Puga J, Pérez-Méndez L, López R, Ramírez G. Spatial and Temporal Patterns of Neurogenesis in the Chick Retina. *Eur J Neurosci.* 1991; 3:559–569. [PubMed: 12106488]

42. Cepko CL, Austin CP, Yang X, Alexiades M, Ezzeddine D. Cell fate determination in the vertebrate retina. *Proc Natl Acad Sci U S A*. 1996; 93:589–595. [PubMed: 8570600]
43. Stevens CB, Cameron DA, Stenkamp DL. Plasticity of photoreceptor-generating retinal progenitors revealed by prolonged retinoic acid exposure. *BMC Dev Biol*. 2011; 11:51. [PubMed: 21878117]
44. Hendrickson A, et al. Rod photoreceptor differentiation in fetal and infant human retina. *Exp Eye Res*. 2008; 87:415–426. [PubMed: 18778702]
45. Narayanan K, Wadhwa S. Photoreceptor Morphogenesis in the Human Retina- A Scanning Electron Microscopic Study. *Anat Rec*. 1998; 252:133–139. [PubMed: 9737749]
46. Hendrickson A, Drucker D. The development of parafoveal and mid-peripheral human retina. *Behav Brain Res*. 1992; 49:21–31. [PubMed: 1388798]
47. Hollenberg MJ, Spira AW. Human Retinal Development : Ultrastructure of the Outer Retina. *AM. J. ANAT*. 1973; 137:357–385. [PubMed: 4730460]
48. Hogan, MJA.; Weddell, JE. *Histology of the Human Eye - An Atlas and textbook*. W. B. Saunders Company; 1971.
49. Baylor DA, Nunn BJ, Schnapf JL. The photocurrent, noise and spectral sensitivity of rods of the monkey *Macaca fascicularis*. *J Physiol*. 1984; 357:575–607. [PubMed: 6512705]
50. Fulton AB, Hansen RM, Findl O. The development of the rod photoresponse from dark-adapted rats. *Invest Ophthalmol Vis Sci*. 1995; 36:1038–1045. [PubMed: 7730013]
51. Breton ME, Quinn GE, Schueller AW. Development of electroretinogram and rod phototransduction response in human infants. *Invest. Ophthalmol. Vis. Sci*. 1995; 36:1588–1602. [PubMed: 7601640]
52. Nusinowitz S, Birch DG, Birch EE. Rod photoresponses in 6-week and 4-month-old human infants. *Vision Res*. 1998; 38:627–635. [PubMed: 9604094]
53. Das AV, et al. Membrane properties of retinal stem cells/progenitors. *Prog Retin Eye Res*. 2005; 24:663–681. [PubMed: 15939659]
54. Gong J, Sagiv O, Cai H, Tsang SH, Del Priore LV. Effects of extracellular matrix and neighboring cells on induction of human embryonic stem cells into retinal or retinal pigment epithelial progenitors. *Exp Eye Res*. 2008; 86:957–965. [PubMed: 18472095]
55. Vajzovic L, et al. Maturation of the Human Fovea: Correlation of Spectral-Domain Optical Coherence Tomography Findings With Histology. *AJOPHT*. 2012; 154:779–789.e772.
56. Luo D-G, Yau K-W. Rod sensitivity of neonatal mouse and rat. *The Journal of General Physiology*. 2005; 126:263–269. [PubMed: 16129773]
57. Fulton AB, Hansen RM. The rod sensitivity of dark adapted human infants. *Curr Eye Res*. 1992; 11:1193–1198. [PubMed: 1490337]
58. Park TS, et al. Vascular progenitors from cord blood-derived induced pluripotent stem cells possess augmented capacity for regenerating ischemic retinal vasculature. *Circulation*. 2014; 129:359–372. [PubMed: 24163065]
59. Prabhudesai SN, Cameron DA, Stenkamp DL. Targeted effects of retinoic acid signaling upon photoreceptor development in zebrafish. *Dev Biol*. 2005; 287:157–167. [PubMed: 16197938]
60. Caffè AR, Visser H, Jansen HG, Sanyal S. Histotypic differentiation of neonatal mouse retina in organ culture. *Curr Eye Res*. 1989; 8:1083–1092. [PubMed: 2612197]
61. Raymond SM, Jackson IJ. The retinal pigmented epithelium is required for development and maintenance of the mouse neural retina. *Curr Biol*. 1995; 5:1286–1295. [PubMed: 8574586]
62. Sheedlo HJ, et al. RPE secreted proteins and antibody influence photoreceptor cell survival and maturation. *Brain Res Dev Brain Res*. 1998; 107:57–69. [PubMed: 9602059]
63. Jablonski MM, Tombran-Tink J, Mrazek DA, Iannaccone A. Pigment epithelium-derived factor supports normal development of photoreceptor neurons and opsin expression after retinal pigment epithelium removal. *J Neurosci*. 2000; 20:7149–7157. [PubMed: 11007870]
64. Pinzon-Duarte G, Kohler K, Arango-Gonzalez B, Guenther E. Cell differentiation, synaptogenesis, and influence of the retinal pigment epithelium in a rat neonatal organotypic retina culture. *Vision Res*. 2000; 40:3455–3465. [PubMed: 11115672]

65. Bumsted KM, Rizzolo LJ, Barnstable CJ. Defects in the MITF(mi/mi) apical surface are associated with a failure of outer segment elongation. *Exp Eye Res.* 2001; 73:383–392. [PubMed: 11520113]
66. Peters, A.; Zambidis, E. *Springer Protocols Handbook*. Vol. Ch. 16. Springer Science+Business Media: 2012. *Human Embryonic stem and Induced Pluripotent Stem Cells: Lineage-Specific Differentiation Protocols*; p. 203-227.
67. Gutierrez C, McNally M, Canto-Soler MV. Cytoskeleton proteins previously considered exclusive to ganglion cells are transiently expressed by all retinal neuronal precursors. *BMC Dev Biol.* 2011; 11:46. [PubMed: 21781303]
68. Megason SG, McMahon AP. A mitogen gradient of dorsal midline Wnts organizes growth in the CNS. *Development.* 2002; 129:2087–2098. [PubMed: 11959819]
69. Yan XX, Wiechmann AF. Early expression of recoverin in a unique population of neurons in the human retina. *Anat Embryol.* 1997; 195:51–63. [PubMed: 9006715]
70. Glubrecht DD, Kim J-H, Russell L, Bamforth JS, Godbout R. Differential CRX and OTX2 expression in human retina and retinoblastoma supporting information. *J Neurochem.* 2009; 111:250–263. [PubMed: 19686387]

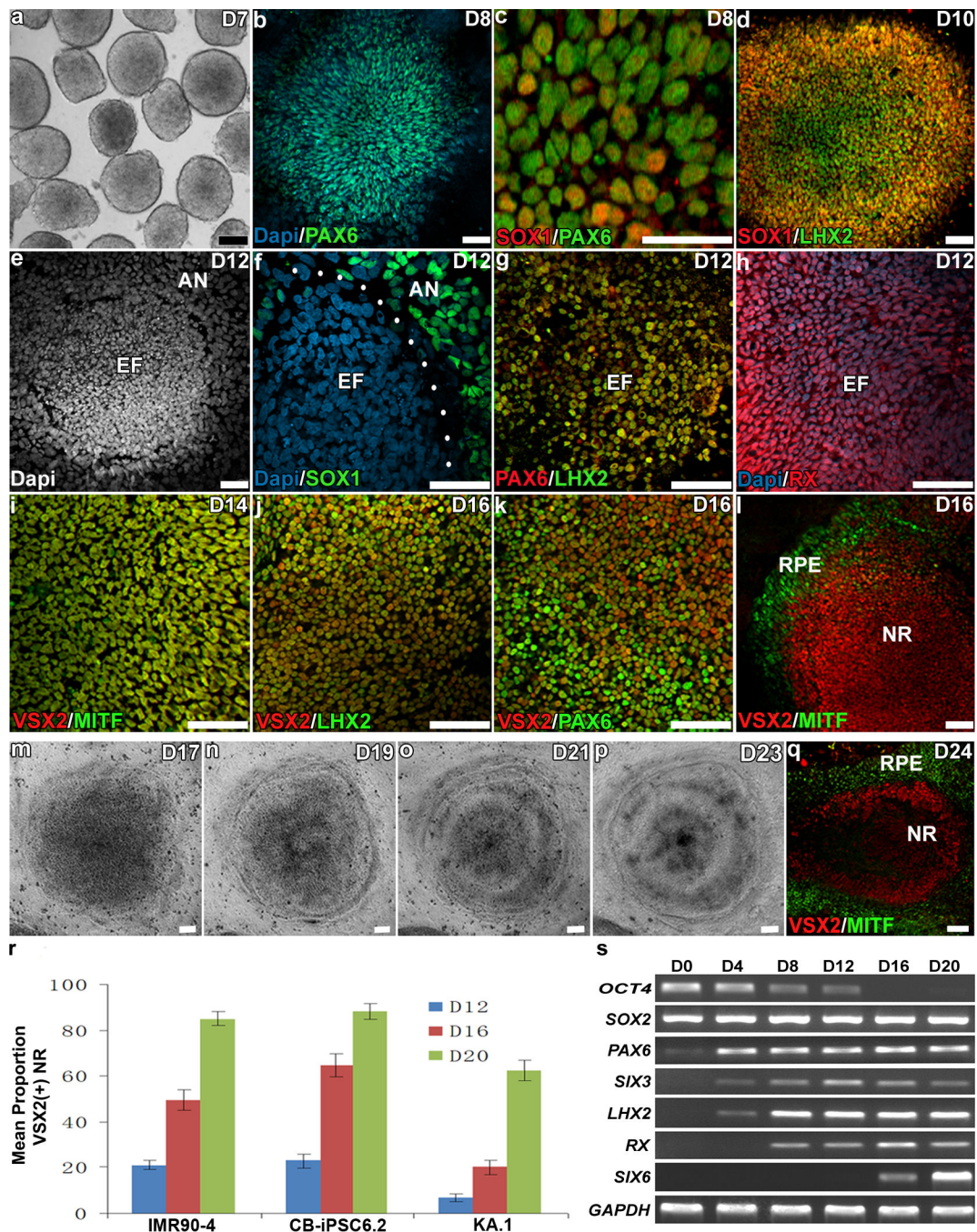


Figure 1. hiPSC-derived retinal progenitors self-organized into eye field-like domains (EF) and subsequently differentiated into neural retina (NR) and retinal pigment epithelium (RPE)
a–d, hiPSC-derived, free-floating aggregates (a) seeded in matrigel-coated dishes acquired an anterior neuroepithelial (AN) fate characterized by SOX1/PAX6 expression (b–c); subsequently, retinal progenitors (LHX2-positive) first appeared in the center of the aggregates (d). **e–h**, By D12, well-defined EF domains (e, f) expressing PAX6, LHX2 and RX (g, h) could be observed surrounded by AN cells (f). **i–l**, As differentiation progressed, cells within the EF domains co-expressed VSX2 and MITF (i), and afterward differentiated

into a central VSX2/LHX2/PAX6-positive NR domain (j-l) and a peripheral RPE domain expressing MITF but not VSX2 (l). **m-q**, The NR domain progressively acquired an optic-cup-like shape. **r**, Efficiency of NR-domain formation among three hiPSC lines (mean \pm SD, 3 experiments/time point/cell line). **s**, RT-PCR analysis showing progressive acquisition of retinal fate. Scale bars: 100 μ m (a and m-p); 50 μ m (b-l, and q).

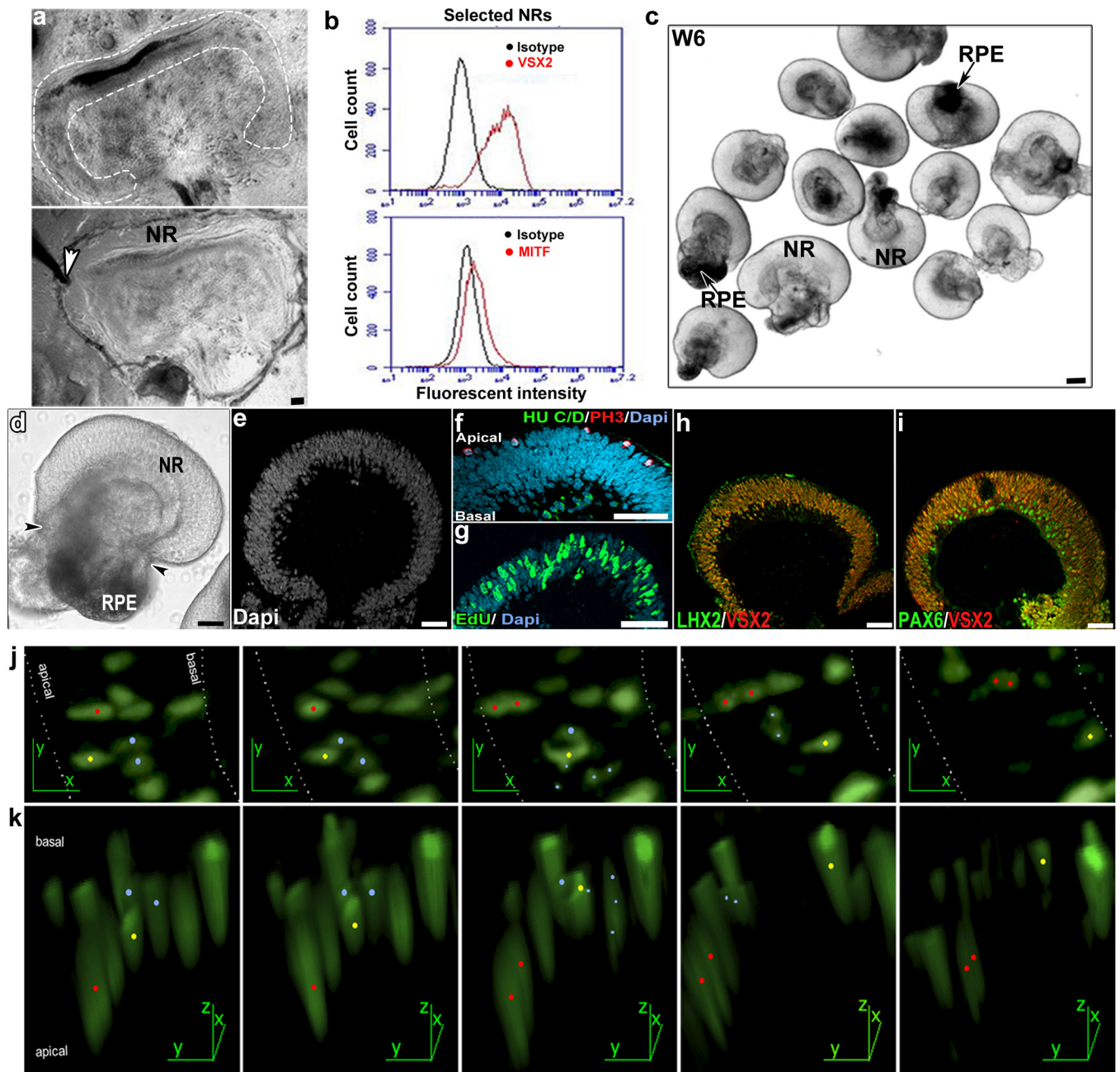


Figure 2. Formation of 3-D retinal cups (RCs)

a, One NR domain (top panel) is being detached with a tungsten needle (arrowhead in bottom panel). **b**, FACS analysis of collected NR domains showed enrichment in NR progenitors (VSX2-positive) compared to retinal pigment epithelium (RPE) progenitors (MITF-positive). **c**, Detached NR domains cultured in suspension formed 3-D RCs, composed of a NR epithelium and RPE (arrow). **d**, Higher magnification of a typical 3-D RC with a NR epithelium continuous with the adjacent RPE bundled at the tip (arrowheads). **e-f**, The pseudostratified neural epithelium within the RC showed the typical polarity, with mitosis (PH3-positive) occurring at the apical side, and postmitotic neuronal precursors (HU

C/D-positive) accumulating at the basal side. **g–i**, NR cells proliferated actively (EdU-positive, **g**) and co-expressed transcription factors characteristic of neural retina progenitor cells (**h–i**). **j–k**, Retinal progenitors within the NR epithelium underwent interkinetic nuclear migration. **j**, Time-lapse imaging of retinal progenitors expressing nuclear GFP. **k**, 3-D volume rendering of the cells shown in (**j**). red dot: cell undergoing mitosis; yellow dot: cell nucleus migrating from the apical to the basal side of the neuroepithelium; blue dots: cells undergoing apoptosis. Scale bars: 100 μm (**a** and **c**); 50 μm (**d–i**).

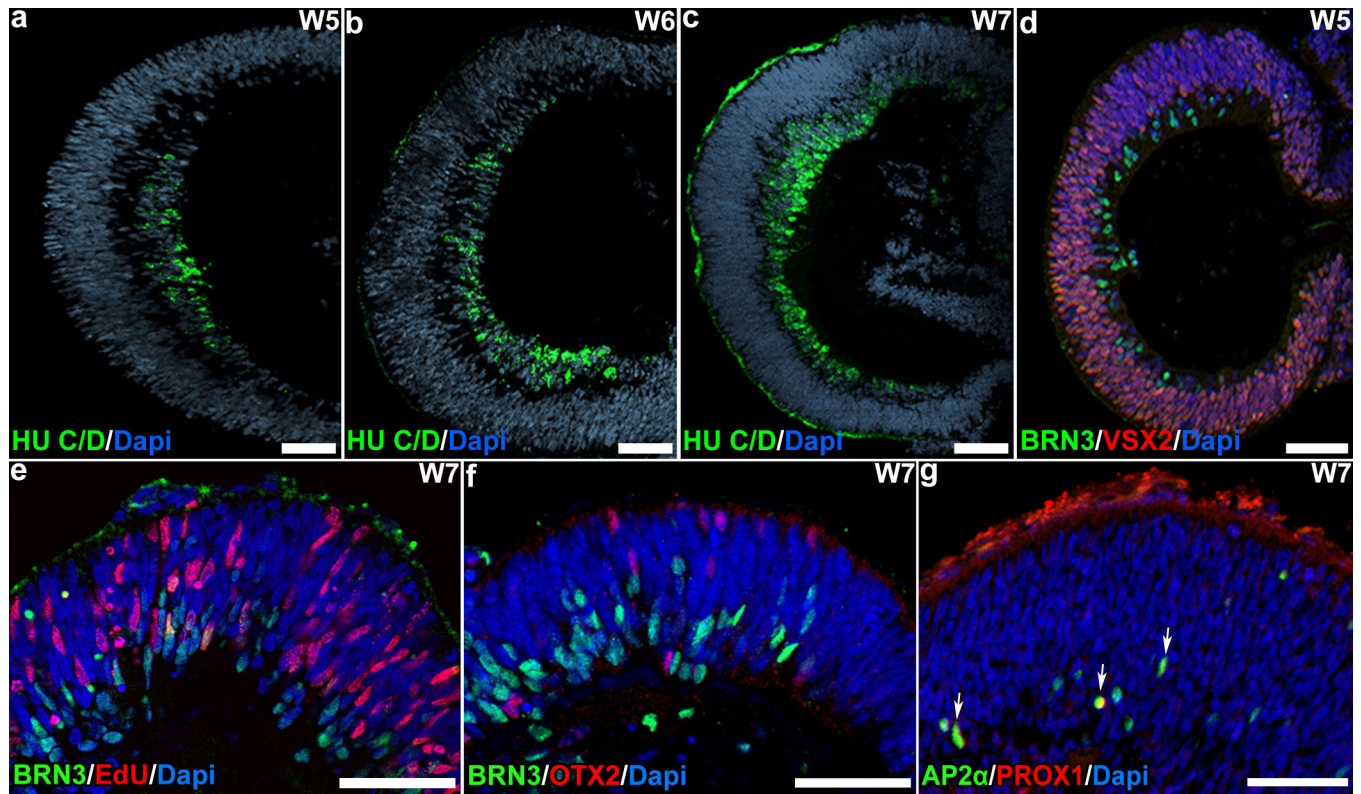
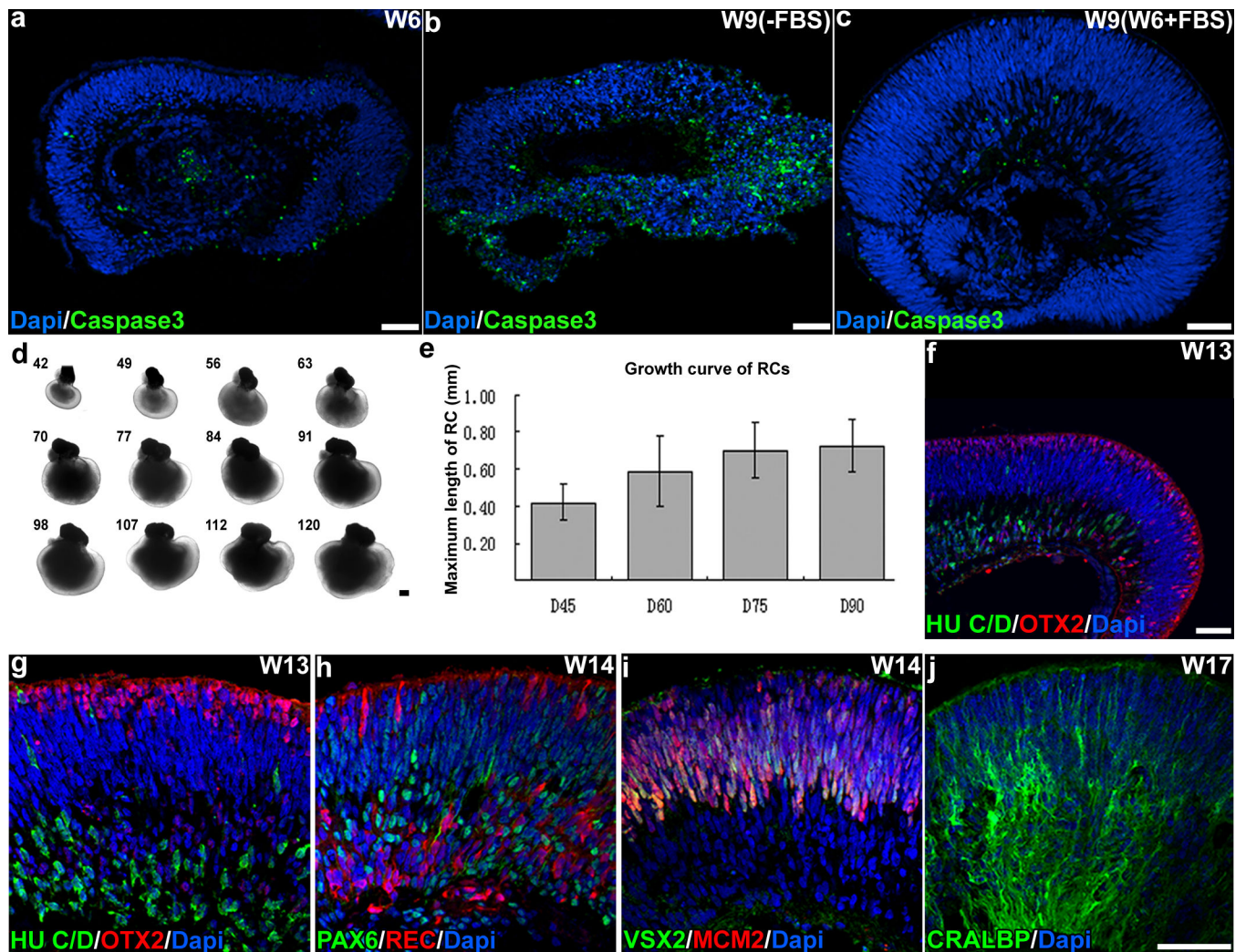


Figure 3. Retinal progenitors within hiPSC-derived retinal cups underwent spontaneous differentiation

Retinal progenitors differentiated following the typical central-to-peripheral pattern (a–c) and acquired early-born cell fates, beginning with generation of ganglion cells (BRN3-positive/EdU-negative, d–f), followed by photoreceptors (OTX2-positive, f), amacrine cells (AP2 α -positive, g) and horizontal cells (AP2 α /PROX1-positive, arrows in g). Scale bars: 50 μ m.



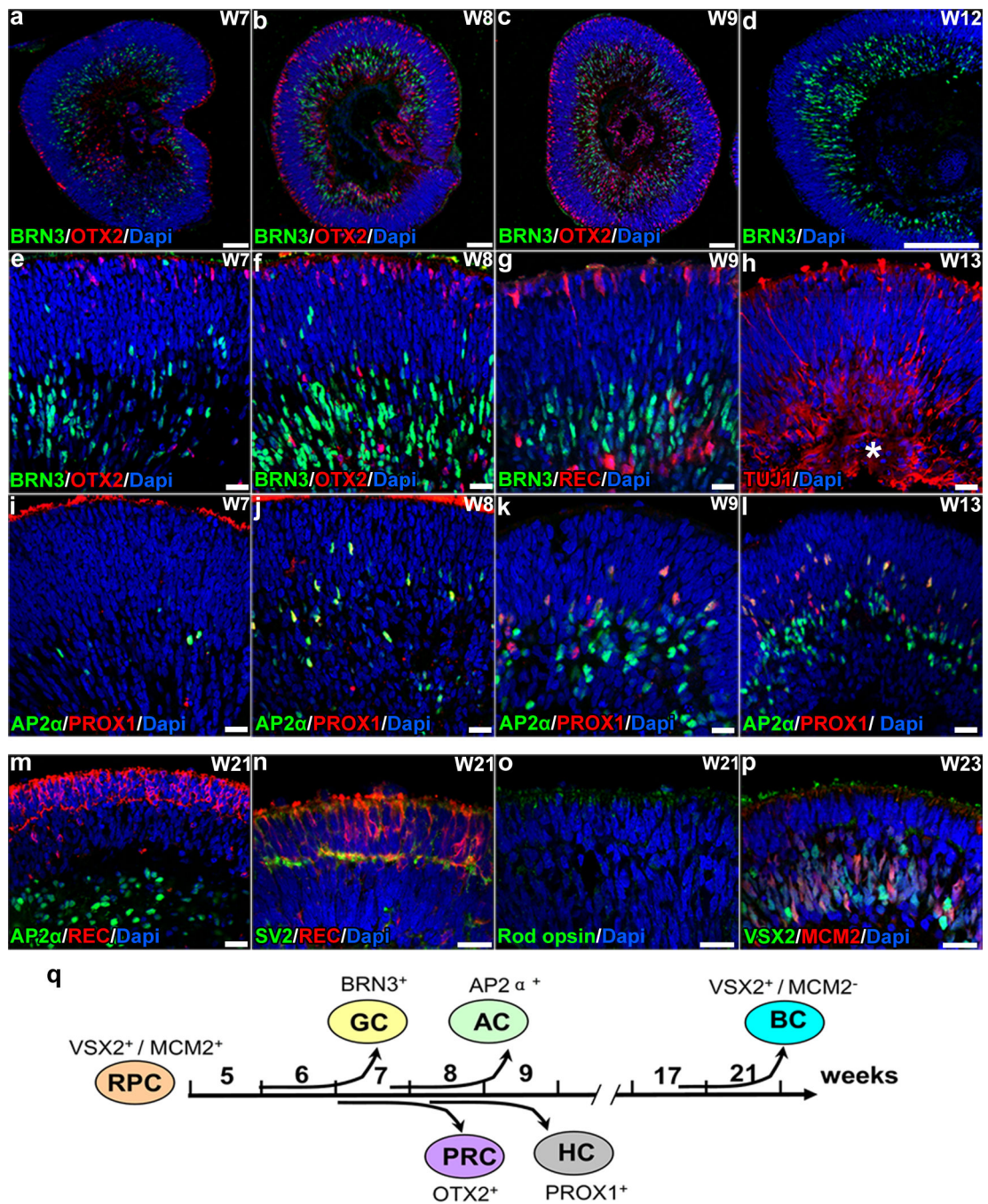


Figure 5. hiPSC-derived neural retina (NR) progenitors within the 3-D retinal cups recapitulated the spatiotemporal pattern of NR differentiation *in vivo*

a–l, Cells within the RCs differentiated and migrated to their corresponding layers, with ganglion cells (GC; BRN3-positive, a–g; TUJ1-positive, h where (*) indicates a developing nerve-fiber-like layer) appearing first, followed by photoreceptor cells (PRC; OTX2/recoverin-positive, a–c, e–g), amacrine cells (AC; AP2α-positive, i–l), and horizontal cells (HC; PROX1-positive, i–l). **m–p**, By W21–W23, RCs presented a well-established outer nuclear layer (REC-positive, m–n) delineated by a developing outer plexiform layer (SV2-

positive, n) and containing rod-opsin-positive photoreceptors (o), and a developing bipolar cell layer containing bipolar cells (BC; VSX2-positive/MCM2-negative, p) intermingled with remaining retinal progenitor cells (RPC; VSX2-positive/MCM2-positive, p). **q**, Timeline of retinogenesis in hiPSC-derived 3-D RCs. Scale bars: 100 μ m (a–d); 20 μ m (e–p).

Author Manuscript

Author Manuscript

Author Manuscript

Author Manuscript

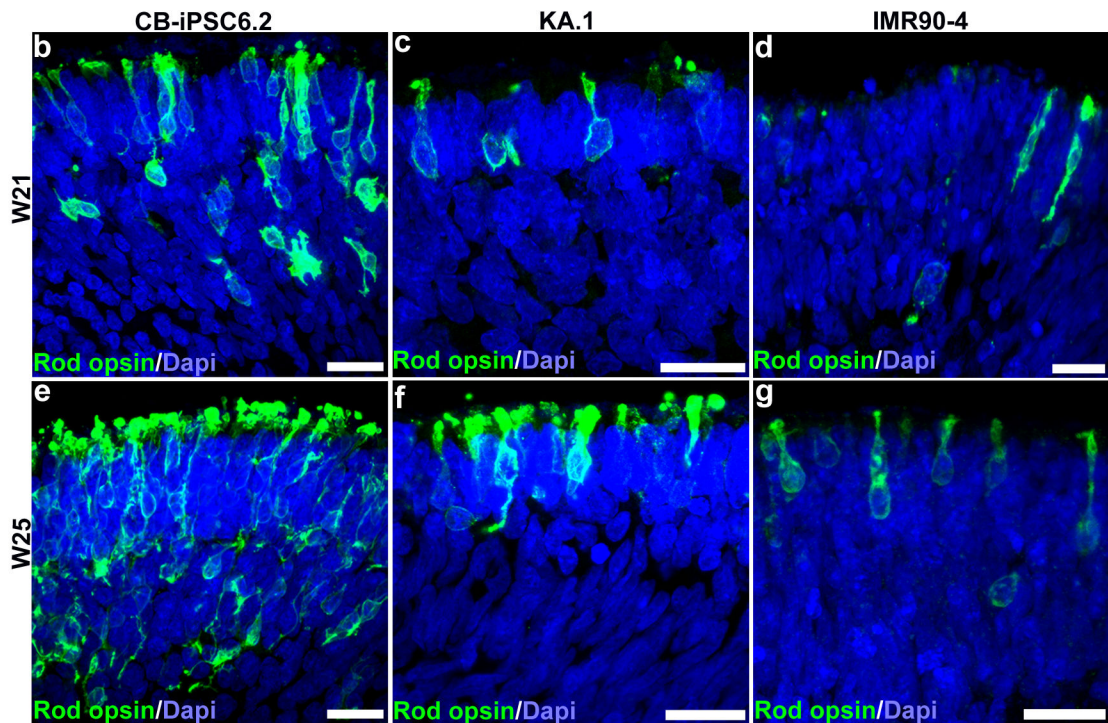
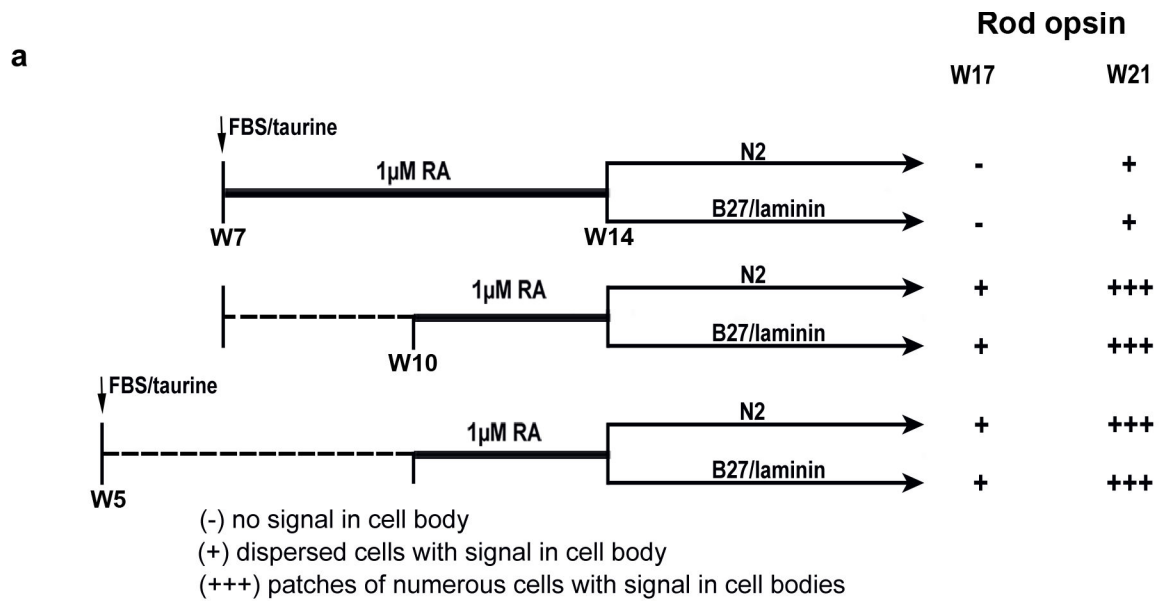


Figure 6. Effect of retinoic acid on the differentiation of hiPSC-derived photoreceptors
a, Two windows of exposure to 1 μ M retinoic acid (RA) were tested in combination with slight modifications to the culture media in CB-iPSC6.2-derived retinal cups (RCs). RA treatment in W7-W14 led to low levels of rod-opsin expression in the distal part of photoreceptor cells as observed in the original culture conditions, except for some RCs that showed few cells with rod-opsin expression in the cell bodies at W21. In contrast, RCs treated during W10-W14 showed dispersed cells with strong rod-opsin expression in their cell bodies already at W17, and forming large patches at W21. We did not observe

significant differences associated with modifications of the culture media after RA treatment or presence of FBS/Taurine from W5. Similar results were observed in 3 independent experiments, 5 RCs per treatment per time window. **b–g**, When KA.1- and IMR90-4-derived RCs were subjected to RA treatment in W10-W14, induction of rod-opsin expression was also observed, although less efficiently than in CB-iPSC6.2-derived RCs (3 independent experiments, 8–22 RCs per cell line). Scale bars: 20 μ m.

Author Manuscript

Author Manuscript

Author Manuscript

Author Manuscript

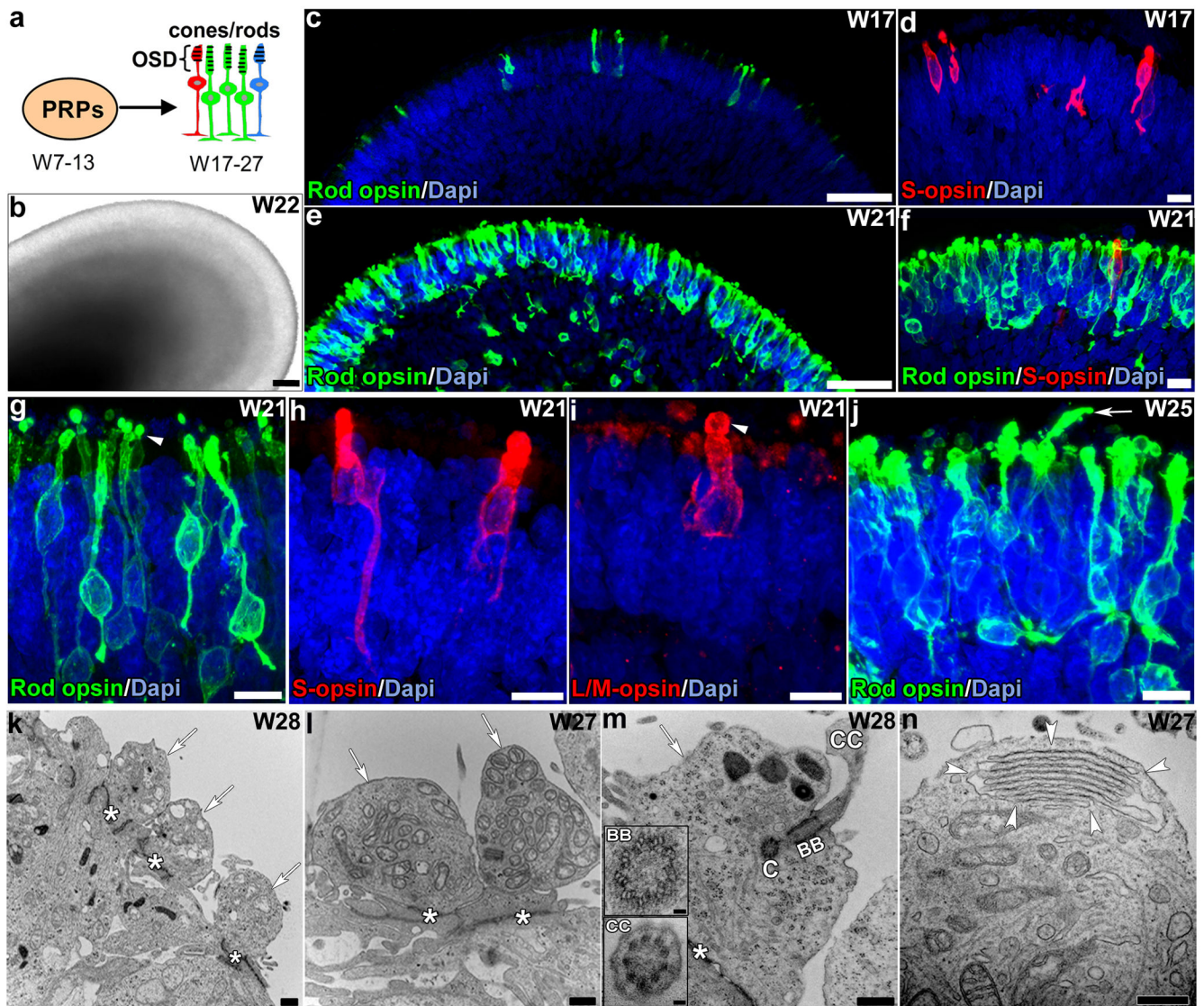


Figure 7. hiPSC-derived rod and cone photoreceptors achieved an advanced level of differentiation including outer-segment disc formation

a, During normal development photoreceptor precursors (PRPs) differentiate into rods, L/M-, and S-cones (in green, red and blue color respectively). **b**, A W22 CB-iPSC6.2-derived retinal cup that has been exposed to 1 μ M retinoic acid in W10-W14. **c-j**, Under this condition, photoreceptors expressing high levels of rod opsin in the entire cell body were first observed by W17 (**c**), significantly increasing in number and forming large patches by W21 (**e-f**). S-opsin expression could be observed in some rod-opsin-negative photoreceptors (**d, f**). High-magnification images of W21 retinal cups showing rods (**g**), S- (**h**) and L/M- (**i**) cones with a morphology and a topological organization similar to those of the *in vivo* retina⁴⁴, including structures reminiscent of short, nascent outer segments (arrowheads). By W25, elongated structures resembling more developed outer segments were rarely observed (**j**, arrow). **k-n**, Transmission-EM analysis revealed the presence of an outer limiting membrane (*), inner segments (arrows), basal bodies (BB), connecting cilia (CC) and stacks

of outer-segment-discs (demarcated by arrowheads). BB and CC presented the photoreceptor-specific microtubule arrangement consisting of $9 \times 3 + 0$ and $9 \times 2 + 0$ respectively (inserts in m). C, centriole. Scale bars: $50 \mu\text{m}$ (b, c, and e); $10 \mu\text{m}$ (d, f, and g–j); $0.5 \mu\text{m}$ (k–n); $0.05 \mu\text{m}$ (m inserts).

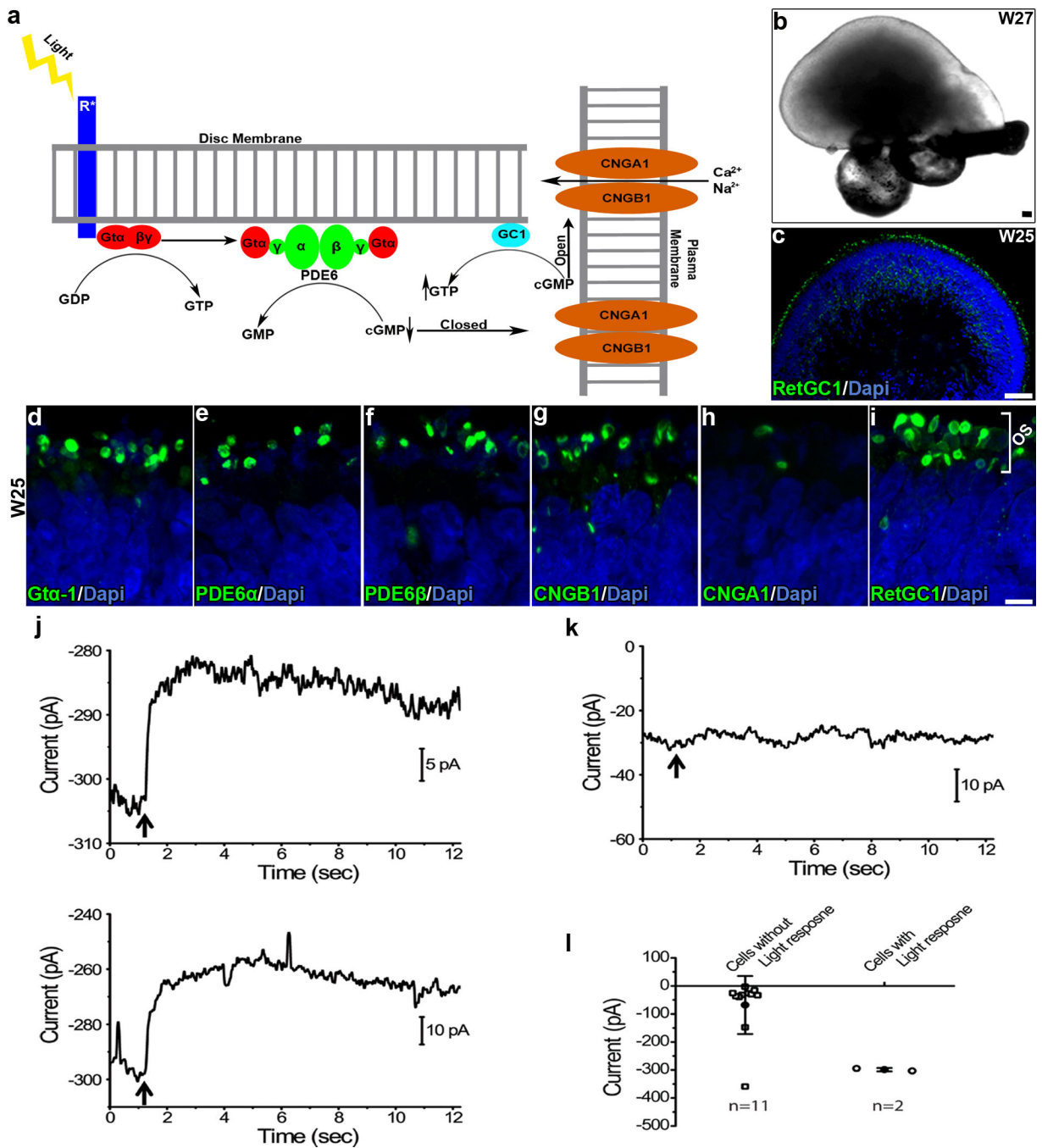


Figure 8. hiPSC-derived photoreceptors expressed proteins of the phototransduction pathway and occasionally showed light response *in vitro*
a, Diagram of rod phototransduction pathway *in vivo*. **b**, 3-D retinal cups (RCs) still maintained their structural organization in W27. **c-i**, Photoreceptors within the RCs showed expression of phototransduction proteins with the appropriate cellular distributions (OS: putative developing outer segments). **j-l**, Perforated-patch electrophysiological recordings from CB-iPSC6.2-derived photoreceptors, showing the flash-triggered responses (single trial) from two light-sensitive cells (**j**), the lack of flash response from one light-insensitive

cell (k), and collected data from 13 cells (l). Cells were voltage-clamped at -50 mV. Inward current is negative. Flash (indicated by arrow) was 40 ms in duration and $2.46 \times 10^5 \mu\text{W cm}^{-2}$ in intensity (white light from a mercury arc lamp). In panel l, open circles indicate individual cells, solid circles indicate mean values, and error bars indicate SD. Scale bars: $50\mu\text{m}$ (b and c); $5\mu\text{m}$ (d–i).