

Review

# Clinical Implications of 20-Hydroxyeicosatetraenoic Acid in the Kidney, Liver, Lung and Brain: An Emerging Therapeutic Target

Osama H. Elshenawy<sup>1</sup>, Sherif M. Shoieb<sup>1</sup>, Anwar Mohamed<sup>1,2</sup> and Ayman O.S. El-Kadi<sup>1,\*</sup>

<sup>1</sup> Faculty of Pharmacy and Pharmaceutical Sciences, University of Alberta, Edmonton T6G 2E1, AB, Canada; oshenawy@ualberta.ca (O.H.E.); shoieb@ualberta.ca (S.M.S.); anwarmoh@ualberta.ca (A.M.)

<sup>2</sup> Department of Basic Medical Sciences, College of Medicine, Mohammed Bin Rashid University of Medicine and Health Sciences, Dubai, United Arab Emirates

\* Correspondence: aelkadi@ualberta.ca; Tel.: 780-492-3071; Fax: 780-492-1217

Academic Editor: Kishor M. Wasan

Received: 12 January 2017; Accepted: 15 February 2017; Published: 20 February 2017

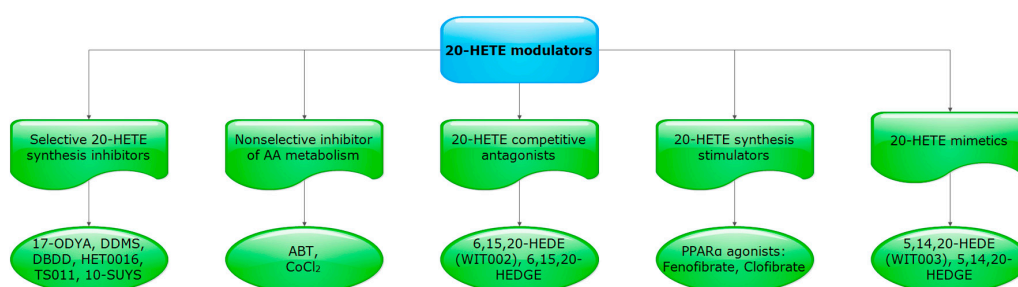
**Abstract:** Cytochrome P450-mediated metabolism of arachidonic acid (AA) is an important pathway for the formation of eicosanoids. The  $\omega$ -hydroxylation of AA generates significant levels of 20-hydroxyeicosatetraenoic acid (20-HETE) in various tissues. In the current review, we discussed the role of 20-HETE in the kidney, liver, lung, and brain during physiological and pathophysiological states. Moreover, we discussed the role of 20-HETE in tumor formation, metabolic syndrome and diabetes. In the kidney, 20-HETE is involved in modulation of preglomerular vascular tone and tubular ion transport. Furthermore, 20-HETE is involved in renal ischemia/reperfusion (I/R) injury and polycystic kidney diseases. The role of 20-HETE in the liver is not clearly understood although it represents 50%–75% of liver CYP-dependent AA metabolism, and it is associated with liver cirrhotic ascites. In the respiratory system, 20-HETE plays a role in pulmonary cell survival, pulmonary vascular tone and tone of the airways. As for the brain, 20-HETE is involved in cerebral I/R injury. Moreover, 20-HETE has angiogenic and mitogenic properties and thus helps in tumor promotion. Several inhibitors and inducers of the synthesis of 20-HETE as well as 20-HETE analogues and antagonists are recently available and could be promising therapeutic options for the treatment of many disease states in the future.

**Keywords:** 20-hydroxyeicosatetraenoic acid (20-HETE); Cytochrome P450s (CYPs); arachidonic acid (AA); kidney; ischemia/reperfusion (I/R) injury; liver; lung; brain

## 1. Introduction

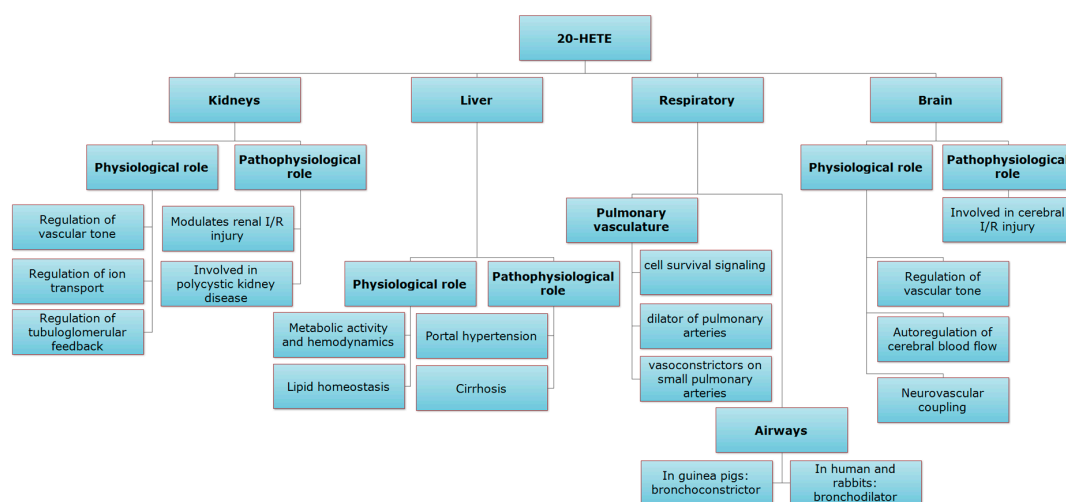
Arachidonic acid (AA), which is a major component of cell membrane, is known to be metabolized into different classes of eicosanoids, by cyclooxygenase (COX), lipoxygenase (LOX), and cytochrome P450 (CYP). COX is known to be responsible for production of prostaglandins (PGs); whereas LOX produces mid chain hydroxyeicosatetraenoic acids (HETEs), lipoxins (LXs), and leukotrienes (LTs). CYP enzymes produce epoxyeicosatrienoic acids (EETs) by CYP epoxygenases, and HETEs (terminal, sub-terminal, and mid-chain) by CYP hydroxylases [1–4]. Terminal hydroxylation of AA is known as  $\omega$ -hydroxylation reaction in which AA is converted to 20-HETE through CYP4A and CYP4F enzymes [5–7]. COX plays an important role in metabolism of 20-HETE providing a diverse range of activities in different organs [8]. 20-HETE is metabolized by COX into hydroxyl analogue of vasoconstrictor prostaglandin H<sub>2</sub> (20-OH PGH<sub>2</sub>) which is further transformed by isomerases into vasodilator/diuretic metabolites (20-OH PGE<sub>2</sub>, 20-OH PGI<sub>2</sub>) and vasoconstrictor/antidiuretic metabolites (20-OH Thromboxane A<sub>2</sub>, 20-OH PGF<sub>2a</sub>) [9–11].

A number of selective inhibitors for 20-HETE synthesis have been previously used including 17-octadecynoic acid (17-ODYA), *N*-methylsulfonyl-12,12-dibromododec-11-enamide (DDMS), dibromododec-11-enoic acid (DBDD), *N*-hydroxy-*N'*-(4-butyl-2methylphenyl)formamidine (HET0016), *N*-(3-Chloro-4-morpholin-4-yl)Phenyl-*N'*-hydroxyimido formamide (TS011) and acetylenic fatty acid sodium 10-undecynyl sulfate (10-SUYS) [5,6,12–16]. Nonselective inhibitors of AA metabolism were also used including 1-Aminobenzotriazole (ABT) and Cobalt (II) chloride (CoCl<sub>2</sub>) [17,18]. Recently, competitive antagonists have been employed including 20-hydroxyeicosa-6(Z),15(Z)-dienoic acid (6,15,20-HEDE; WIT002) and 20-hydroxyeicosa-6(Z),15(Z)-dienoyl]glycine (6,15,20-HEDGE) [5,13–15]. Peroxisome proliferator-activated receptor alpha (PPAR $\alpha$ ) agonists, such as fenofibrate and clofibrate, or gene therapy were used to upregulate the formation of 20-HETE besides 20-HETE mimetics, 20-hydroxyeicosa-5(Z),14(Z)-dienoic acid (5,14,20-HEDE; WIT003), and *N*-[20-hydroxyeicosa-5(Z),14(Z)-dienoyl]glycine (5,14,20-HEDGE) [13,15] (Figure 1 represents a summarization for 20-HETE modulators commonly used in previous literature).



**Figure 1.** Different 20-hydroxyeicosatetraenoic acid (20-HETE) modulators commonly used to study the role of 20-HETE in vivo and in vitro.

Notably, eicosanoids exert their action through specific receptors called eicosanoid receptors, in addition to non-specific receptors such as PPAR receptors [19]. Recent data demonstrated the identification of a novel G protein-coupled receptor (GPCR) as 20-HETE receptor in the vascular endothelium [20]. The identification of 20-HETE receptor would result in better understanding of molecular mechanisms and clinical implications of 20-HETE in different organs. In this review, 20-HETE role in the kidney, liver, lung and brain during normal physiology, and during pathophysiological disease states will be discussed (summarized in Figure 2).



**Figure 2.** Role of 20-HETE in the kidney, liver, lung and brain during normal physiological and pathophysiological conditions.

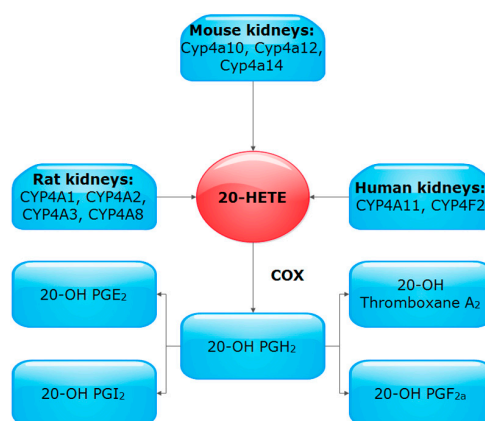
Moreover, we will discuss 20-HETE role in mitogenicity. Furthermore, we will discuss the possible therapeutic approaches using 20-HETE mimetics, antagonists as well as synthesis inducers and inhibitors.

## 2. Role of 20-HETE in the Kidney

The kidney has the highest abundance of CYP among all extrahepatic organs, and the highest level within the kidney was found in the proximal tubules [21,22]. 20-HETE was identified as the major CYP metabolite of AA in the proximal tubule [21] and microsomes of renal cortex [23]. In thick ascending limb of the loop of Henle (TAL), 20-HETE and 20-carboxyeicosatetraenoic acid (20-COOH-AA) are the major AA metabolites of the CYP-dependent pathway [24,25]. 20-HETE is also a major AA metabolite in the renal microvasculature [26–28] and acts as a potent vasoconstrictor; however, its vasoconstrictor actions can be offset by its natriuretic properties [29]. 20-HETE contracts renal microvessels at concentrations of less than  $10^{-10}$  M [30] and sensitizes renal vessels transfected with CYP4A1 cDNA to phenylephrine [31,32]. Also there is a strong evidence that locally produced 20-HETE plays a pivotal role in modulating the myogenic responsiveness of the afferent arteriole and may help explain how deficiencies in the renal production of 20-HETE could foster the initiation of hypertension-induced glomerular injury [33]. Therefore, 20-HETE is the preeminent renal eicosanoid, overshadowing PGE<sub>2</sub> and PGI<sub>2</sub> [8] and plays a role in vascular and tubular abnormalities of renovascular disease states [34]. Interestingly, 20-HETE reduces albumin permeability ( $P_{alb}$ ), while on the other hand its relatively lowered levels are associated with increased  $P_{alb}$ , development of proteinuria and glomerular injury in early hypertension. Pretreatment of Sprague Dawley (SD) rats glomeruli with the 20-HETE mimetic, 5,14,20-HEDE, reduced baseline  $P_{alb}$  and opposed the effects of transforming growth factor-beta (TGF- $\beta$ ) to increase  $P_{alb}$  [35–37]. Moreover, exogenous 20-HETE or clofibrate treatment protected the glomeruli from increased  $P_{alb}$  caused by puromycin aminonucleoside, which is known to be an injurious agent [36].

### 2.1. Biosynthesis of 20-HETE in the Kidney

20-HETE production in the kidney has been extensively studied in rats, mice, and humans. In this regard, it was found that 20-HETE is formed primarily by CYP4A and CYP4F subfamilies (Figure 3) [5,38].



**Figure 3.** Enzymes responsible for 20-HETE formation and metabolism in different species.

In rat kidney, different CYP4A isoforms were detected, namely CYP4A1, CYP4A2, CYP4A3 and CYP4A8 [26,27,39–41]. Each of these isozymes contribute to a different extent to the basal renal function [42]. For example, CYP4A1 is characterized as a major 20-HETE synthesizing isozyme in the rat kidney [27,43,44]. On the other hand, CYP4A2 is a major contributor to hemodynamic responses, whereas CYP4A3 is a major contributor to tubular responses following nitric oxide (NO) inhibition [42].

CYP4A expression and 20-HETE synthesis were the highest in the outer medulla followed by the cortex and lastly the inner medulla/papilla [45]. Also in rats, different CYP4F isoforms have been detected with CYP4F1, CYP4F4, and CYP4F5 being more expressed in the renal cortex than the medulla, while CYP4F6 shows higher medullary expression [46]. In the mouse, however, Cyp4a10, Cyp4a12, and Cyp4a14 are involved in 20-HETE synthesis, of which Cyp4a12a is the predominant 20-HETE synthase [47]. Interestingly, Cyp4a12a expression determines the sex and strain specific differences in 20-HETE generation [48]. Microdissected renal blood vessels and nephron segments from C57BL/6J mice revealed that Cyp4a and Cyp4f isoforms were detected in every segment analyzed [38]. In humans, it was found that microsomes from kidney cortex, converted AA mainly to 20-HETE by CYP4A11 and CYP4F2 [49,50]. Of interest, different human CYP4F2 variants have been identified, of which M433 allele was found to be associated with 56%–66% decrease in 20-HETE production [51].

## 2.2. Metabolism and Regulation of 20-HETE in the Kidney

Metabolism of 20-HETE by COX (Figure 3) is proposed to represent an important regulatory mechanism in setting preglomerular microvascular tone [52]. Renal vasoconstrictive effect of 20-HETE in response to hyperchloremia was shown to be dependent on COX activity [11]. Also, low-salt intake was found to stimulate the renin-angiotensin system and induces renal vascular expression of CYP4A and COX-2 in arcuate and interlobular arteries while COX-1 was unaffected [52]. It was found that low-salt diet increases 20-HETE levels in the incubate of either arcuate/interlobular or interlobular renal arteries only when COX was inhibited [52]. Thus, the capacity of COX to metabolize 20-HETE to PG analogs, e.g., 20-OH PGF<sub>2a</sub> and 20-OH PGE<sub>2</sub>, may be critical to modify the renal vascular and tubular actions of the eicosanoids [53].

With regards to regulation of 20-HETE in the kidney, inhibition of its formation contributes to the cGMP-independent vasodilator response to NO in the renal microcirculation [8,54–58], attenuates myogenic tone and autoregulation of blood flow, and modulates vascular responses to the vasodilators, such as carbon monoxide (CO), and vasoconstrictors such as angiotensin II (AngII) and endothelin (ET) [59]. Interestingly, NO inhibits a variety of heme-containing enzymes, including NO synthase (NOS) and CYP enzymes. For example, it inhibits CYP4A exerting a negative modulatory effect on 20-HETE formation. Inhibition of NOS was found to increase  $\omega$ -hydroxylase activity, CYP4A expression, and renal efflux of 20-HETE with a concomitant enhanced response to vasoconstrictor agents [8,54–58]. Inhibition of NOS with N( $\omega$ )-nitro-L-arginine-methyl ester (L-NAME) greatly increased the expression of  $\omega$ -hydroxylase protein and induced a 4-fold increase in renal efflux of 20-HETE [55]. In addition, L-NAME increased mean arterial blood pressure and renal vascular resistance (RVR), while reducing renal blood flow and GFR associated with diuresis and natriuresis. Importantly, DBDD, as a 20-HETE synthesis inhibitor, was able to blunt these effects [10]. Sodium nitroprusside, a NO donor, inhibited renal microsomal conversion of AA to 20-HETE and increased vascular diameter in a dose-dependent manner [54,55,57].

Heme and products derived from its metabolism, by heme oxygenase enzymes (HO-1 and HO-2), were found to influence renal function and blood pressure potentially by affecting the expression and activity of hemoproteins, including CYP and COX isoenzymes (COX-1 and COX-2) [45]. HO isoform expression was found to be segmented within the kidney and along the nephron [45]. HO-1 protein in kidney was barely detectable; its contribution to the regulation of hemoproteins became apparent only under pathophysiological conditions that caused HO induction. To the contrast, HO-2 protein was found to be expressed in all kidney structures with higher levels in outer medulla followed by inner medulla/papilla and cortex [45,60]. HO-1 induction was found to suppress microsomal heme, CYP4A and COX-2 protein, and 20 HETE [45,60].

Treatment with clofibrate, a PPAR $\alpha$  agonist, increased CYP4A protein levels and the subsequent 20-HETE production in microsomes prepared from the renal cortex [61,62]. Moreover, in an in vitro study performed in human renal tubular epithelial cells (HK-2 cell line), Li et al. have demonstrated that cisplatin is a potent inducer of CYP4A11 and it exerts its cytotoxic activity in kidney via

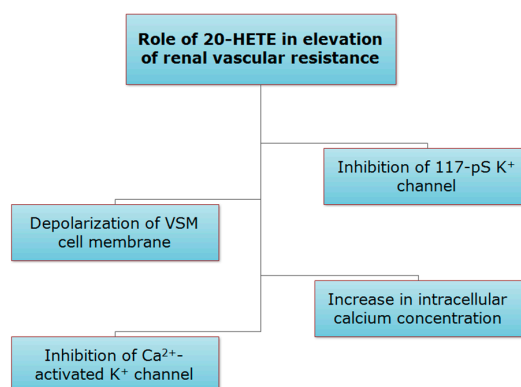
increasing production of 20-HETE [63]. In contrast, treatment with pioglitazone, the PPAR $\gamma$  agonist, neither affected CYP4A nor 20-HETE level [61,62]. Similarly, dexamethasone, an inducer of CYP4A, caused a 2-fold increase in the proximal tubular synthesis of 20-HETE as well as an increase in CYP4A1 mRNA [61]. Another regulator for 20-HETE production is the dietary salt intake which modulates glomerular CYP activity [57]. Hyperchloremia increased 20-HETE release from the rat kidney by 2-fold when compared with low-chloride conditions of renal perfusion [11]. As for AngII, it was found to induce 20-HETE release from preglomerular microvessels [52], whereas vasopressin deficiency elevates the expression of CYP4A protein and renal formation of 20-HETE in the kidney of Brattleboro rats [64].

### 2.3. Role of 20-HETE in the Kidney

#### 2.3.1. Role of 20-HETE in Preglomerular Vascular Tone Regulation

CYP4A isozymes have the potential to function as an oxygen sensor in mammalian microcirculatory beds and to regulate arteriolar tone by generating 20-HETE in an oxygen-dependent manner [40]. 20-HETE is produced by renal vascular smooth muscle (VSM) cells [65] and participates in the autoregulation of renal blood flow via its effect on vascular tone, ion transport and tubuloglomerular feedback; while excess 20-HETE was found to be excreted in the urine [8,66–69]. Many previous studies have addressed 20-HETE as a second messenger that plays a central role in the regulation of renal vascular tone [38,41,47,48,61,70]. 20-HETE is a potent constrictor produced by the preglomerular vasculature; it contributes to the regulation of tone and myogenic response [40,43,56,71,72]. In addition, 20-HETE contributes to the increase in intracellular calcium in renal micro-VSM cells [73]. The vasoconstrictor response of canine renal arcuate arteries to 20-HETE resembles the myogenic activation of these vessels after elevations in transmural pressure [74].

20-HETE contributes importantly to renal blood flow autoregulation by afferent arterioles [28], and contributes to the development of hypertension by elevating renal vascular resistance [75]. Conversely, in the kidney tubules, 20-HETE suppresses sodium reabsorption and enhances natriuresis, hence, contributing to antihypertensive mechanisms [76]. 20-HETE acts in part by inhibiting the opening of the large-conductance Ca<sup>2+</sup>-activated K<sup>+</sup> channel, depolarizing VSM cell membrane, and producing sustained increase in intracellular calcium concentration [8,28,59,65,77–81]. Inhibition of 20-HETE formation contributes to the activation of K<sup>+</sup> channels and the vasodilator effects of NO in the renal microcirculation [82]. As for renal medullary perfusion, it seems to be under tonic suppression by 20-HETE, where renal medullary perfusion indices were increased after infusion of HET0016 [83]. Similarly, infusion of 17-ODYA into the renal artery increased cortical and papillary blood flows [66]. In isolated canine renal arcuate arteries, 20-HETE significantly reduced mean open time, the open-state probability, and the frequency of opening a 117-pS K<sup>+</sup> channel recorded from renal VSM cells (Figure 4) [74].

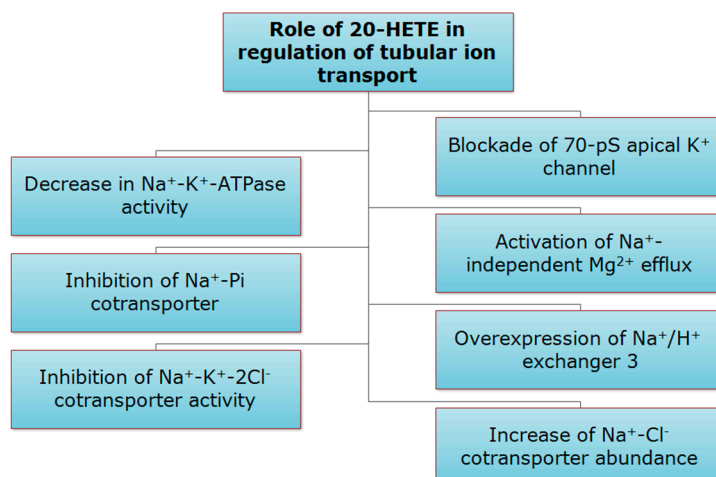


**Figure 4.** Role of 20-HETE in elevation of renal vascular resistance.

Afferent arteriolar vasoconstriction is partly mediated by the endothelial COX pathway. 20-HETE caused constriction of rabbit afferent arterioles when vascular tone increased with norepinephrine. However, this constriction was significantly attenuated by pretreatment with indomethacin or the thromboxane/endoperoxide receptor antagonist, SQ29548 [75]. 20-HETE metabolites, 20-OH PGE<sub>2</sub> and 20-OH PGF<sub>2α</sub> play significant role in regulating cortical blood flow and medullary blood flow. Renal intra-arterial infusion of 20-HETE was found to decrease cortical blood flow and increase medullary blood flow. These controversial effects were attributable to 20-OH PGF<sub>2α</sub> that caused vasoconstriction, and 20-OH PGE<sub>2</sub> that caused vasodilation in the cortex and medulla [84]. 20-HETE is a second messenger for ET-1 and a mediator for selective renal effects of AngII [8]. ET-1 increased mean arterial blood pressure, renal vascular resistance, while reduced cortical blood flow and renal blood flow, at least in part, by modulating 20-HETE levels via activation of ET receptors [84–87]. However, ET-1 also increased medullary blood flow which seemed to be mediated by the vasodilator prostanoids or by NO via ET receptor activation [85]. As for transgenic animals, KAP-CYP4F2 transgenic mice, predominantly showed renal overexpression of CYP4F2 leading to high 20-HETE in urine and blood, and accounting for the elevation in blood pressure [88]. Cyp4a14 KO mice have prohypertensive status as a result of increased Cyp4a12 expression with associated increased production of 20-HETE and endothelial NOS (eNOS) uncoupling leading to increased oxidative stress, enhanced vasoconstriction as well as a defect in the renal excretory capacity [47]. Recently, it was shown that the dysregulated renal 20-HETE/EET ratio in the hypertensive Cyp4F2 transgenic mice was resulted from the activation of soluble epoxide hydrolase (sEH) and the inhibition of epoxygenase activity suggesting 20-HETE vasoconstrictive activity. Moreover, 20-HETE demonstrated an inverse regulatory effect on the endogenous epoxygenases in the kidney [89].

### 2.3.2. Role of 20-HETE in Tubular Ion Transport

20-HETE serves as a second messenger that plays a central role in the regulation of sodium reabsorption in the proximal tubule and TAL [21,38,41,47,48,61,70]. 20-HETE inhibits sodium-potassium-chloride (Na<sup>+</sup>-K<sup>+</sup>-2Cl<sup>-</sup>) transporter in the TAL [90]. Moreover, 20-HETE, produced in the proximal tubules, modulates ion transport by regulating Na<sup>+</sup>-K<sup>+</sup>-ATPase activity via stimulating protein kinase C (PKC) to phosphorylate the α-subunit of Na<sup>+</sup>-K<sup>+</sup>-ATPase [8,28,59,65,91–95]. Additionally, excessive fluid reabsorption in the proximal tubule in the Cyp4a14 knockout mice has led to hypertension which is secondary to 20-HETE-mediated overexpression of sodium-hydrogen exchanger 3 [96–98]. Infusion of 20-HETE at a dose of 100 nmol/kg/min decreased medullary Na<sup>+</sup>-K<sup>+</sup>-ATPase activity by 24.2% [99]. 20-HETE serves also as a second messenger for the natriuretic effects of dopamine, parathyroid hormone, and AngII [65,100–102]. In addition, 20-HETE specifically inhibits Na<sup>+</sup>-Pi co-transporter in proximal tubule-like opossum kidney (OK) cells [103–106]. As for TAL, 20-HETE modulates ion transport by inhibiting the activities of Na<sup>+</sup>-K<sup>+</sup>-2Cl<sup>-</sup> co-transporter [8,28,65,93,94,107,108]. 20-HETE inhibits Na<sup>+</sup>-K<sup>+</sup>-2Cl<sup>-</sup> transport, in part, by blocking a 70-pS apical K<sup>+</sup> channel, the predominant type of the two apical K<sup>+</sup> channels operating under physiological conditions in the TAL of the rat kidney [59,109,110]. DDMS was found to increase the activity of the 70-pS K<sup>+</sup> channel significantly [111]. Interestingly, AngII has dual effects on the activity of the apical 70-pS K<sup>+</sup> channel in TAL of the rat kidney, where 50 pM AngII has inhibitory effect mediated by 20-HETE, whereas 50–100 nM AngII has stimulatory effect mediated via NO [24]. In addition, 20-HETE was found to be a key mediator in the activation of Na<sup>+</sup>-independent Mg<sup>2+</sup> efflux (Figure 5) [112]. Recently, it has been shown that human CYP4A11 transgenic mice have developed a 20-HETE-dependent hypertension associated with 50% increase in sodium chloride cotransporter abundance in the distal tubules [113].



**Figure 5.** Role of 20-HETE in regulation of tubular ion transport.

#### 2.4. Role of 20-HETE in Pathophysiology of the Kidney

##### 2.4.1. Role of 20-HETE in Renal Ischemia/Reperfusion (I/R) Injury

Acute kidney injury (AKI) is a major consequence following surgery and various medical conditions that significantly increases morbidity and mortality [114–116]. Recent reports suggest that renal I/R injury is the most common cause of AKI [50]. Several reports showed that AA is released from membrane phospholipids in response to ischemia and can be metabolized to 20-HETE that plays an important role in I/R injury which is known to be associated with a patient mortality of up to 50% [117,118]. 20-HETE overexpression in renal I/R injury exacerbates cellular damage by enhancing generation of free radicals and activation of caspase-3 [119]. 20-HETE role in vasoconstriction and inflammation contributes to I/R injury as well [120]. 20-HETE also plays a role in post-ischemic fall in medullary blood flow and its associated long-term decline in renal function [121]. In this regard, the 20-HETE antagonist, 6,15,20-HEDE, accelerated the recovery of medullary perfusion as well as renal medullary and cortical re-oxygenation, during early reperfusion phase, whereas the 20-HETE mimetic, 5,14,20-HEDE, did not improve renal injury and reversed the beneficial effects of 6,15,20-HEDE [120]. Pretreatment of uninephrectomized male Lewis rats with either the HET0016 or 6,15,20-HEDE via the renal artery before exposure to warm ischemia was found to attenuate I/R induced renal dysfunction and to reduce tubular lesion scores, inflammatory cell infiltration, and tubular epithelial cell apoptosis [120]. However contradicting results were obtained in a previous study in which infusion of 5,14-20-HEDE or 5,14-20-HEDGE protected SD rat kidney from I/R injury, whereas HET0016 exacerbated renal injury [15]. Protection provided by 20-HETE analogues was supposed to be due to inhibition of renal tubular sodium transport, increased urine output and sodium excretion, and prevention of post-ischemic fall in medullary blood flow [15]. The contradiction in results could be related to the use of different models and treatment forms. In addition, high systemic HET0016 levels may inhibit not only 20-HETE synthesis, but also the  $\omega$ -hydroxylation and inactivation of leukotriene B<sub>4</sub> resulting in aggravation of ischemic renal damage. Moreover, high doses of 5,14-20-HEDE (mg/kg range) results in high systemic drug levels that acted not only during ischemia but also during reperfusion providing protection for the kidney mainly in reperfusion phase by inhibiting sodium reabsorption, thereby limiting tubular oxygen consumption [120]. In renal transplant patients, the change in dynamics of 20-HETE during early phase of allograft reperfusion was associated with early post-transplant graft function, and extent of 20-HETE release occurring within the first 5 min of allograft reperfusion was found to be a negative predictor of post-transplant allograft function [117,120].

#### 2.4.2. Role of 20-HETE in Polycystic Kidney Diseases

Polycystic kidney diseases are characterized by abnormal proliferation of renal epithelial cells which was found to be mediated by 20-HETE [122–124]. Several pathways known to be involved in polycystic kidney disease have been reported to be activated by 20-HETE such as PKC, Src and EGFR pathways. Expression of CYP4A1, CYP4A2, CYP4A3, and CYP4A8 mRNA was found to be increased in polycystic kidney by 2- to 4-fold as compared to non-cystic SD rat kidney; and daily administration of HET0016 significantly reduced kidney size by 24% [123]. Similarly, Balb/c polycystic kidney mouse, a model of autosomal recessive polycystic kidney disease, treated with HET0016 daily showed significant reduction in kidney size by half and approximately doubled survival rates [122]. Non-cystic Balb/c cells overproducing Cyp4a12 exhibited a 4- to 5-fold increase in cell proliferation compared with control Balb/c cells, however this effect was completely abolished when 20-HETE synthesis was inhibited [122]. These findings suggest that 20-HETE might be a new biomarker and a therapeutic target for polycystic kidney disease [95].

#### 2.5. 20-HETE Mediation of Drug Induced Toxicity in the Kidney

Tian et al. reported that 20-HETE may protect from doxorubicin-induced toxicity of human renal tubular epithelial cells. They found that doxorubicin suppresses CYP4A11 gene expression and protein production in human renal tubular epithelial cells more efficiently than HET0016. This resulted in decreased cell viability and increased lactate dehydrogenase activity when human renal tubular epithelial cells were incubated with doxorubicin for 24h, whereas 20-HETE increased cell survival and decreased lactate dehydrogenase activity in concentration-dependent manner with no reported mechanism. Similar results were obtained when 20-HETE was co-administered with doxorubicin, while, HET0016 was found to exaggerate doxorubicin effect [125]. On the other hand, 20-HETE plays a role in cyclosporin A-induced nephrotoxicity. Rats treated with cyclosporin A suffered from increased renal microsomal conversion of AA to 20-HETE, increased systolic blood pressure, and induced renal damage, whereas pretreatment with HET0016 or ABT attenuated or prevented these effects [126–128]. Interestingly, a recent *in vitro* study performed in HK-2 cells suggested that cisplatin is a potent inducer of CYP4A11 and 20-HETE biosynthesis and this mechanism of induction is proposed as a novel mechanism of renal tubular toxicity of cisplatin [63].

#### 2.6. Role of 20-HETE in the Renal System during Pregnancy

20-HETE synthesis in the kidney is altered in a time- and site-specific manner during pregnancy suggesting distinct regulatory mechanisms for 20-HETE synthesis in the kidney during pregnancy [129]. In addition, NO interacts with CYP4A proteins in a distinct manner and it interferes with renal microvessels 20-HETE synthesis, emphasizing the important role of 20-HETE in regulating blood pressure and renal function during pregnancy [130,131]. Inhibition of NO synthesis by L-NAME during late pregnancy led to increased production of renal vascular 20-HETE causing significantly higher mean arterial blood pressure and renal vascular resistance, and lower renal blood flow and GFR. Combined treatment with DDMS and L-NAME significantly attenuated these effects [131]. This data suggested that 20-HETE plays a role in hypertension and renal vasoconstriction induced by chronic reduction in uterine perfusion pressure (RUPP) in pregnant rats [132]. ABT decreased mean arterial blood pressure in RUPP rats whereas it had no effect in normal pregnant rats, besides attenuating the differences in renal hemodynamics observed between normal pregnant and RUPP rats [132].

### 3. Role of 20-HETE in the Liver

#### 3.1. Formation of 20-HETE in the Liver

Interestingly, 50%–75% of CYP-dependent AA metabolites formed by human liver microsomes are 19-HETE and 20-HETE where 20-HETE was found to be the main metabolite formed [93,133]. AA  $\omega$ -hydroxylation in human liver is catalyzed by CYP4F2, CYP4F3 and CYP4A11 [134];



with CYP4F2 and CYP4F3B, human liver-specific splice variant of CYP4F3, generating most hepatic 20-HETE [134,135]. In human hepatocyte-like HepaRG, hepatoma cell line, induction of CYP4F3B was observed by  $\text{PGA}_1$  and by lovastatin leading to increased synthesis of 20-HETE [135,136]. In addition, statins were found to recruit PXR to induce CYP4F3B [136]. On the other hand, isoniazid was found to reduce expression and formation of both CYP4A and 20-HETE, respectively, in the liver [137].

### 3.2. Role of 20-HETE in the Liver

Very little information is available about the role of 20-HETE in the liver, however it seems that 20-HETE participates in the regulation of liver metabolic activity and hemodynamics [93,138]. 20-HETE is a potent activator of  $\text{PPAR}_\alpha$  and may exert important functions in lipid homeostasis and in controlling fat-dependent energy supply and metabolism, in addition it is an important inflammatory mediator and may have important role in inflammatory diseases [135,136]. 20-HETE is a weak, COX-dependent, vasoconstrictor of the portal circulation, and it was supposed to be involved in pathophysiology of portal hypertension [93,138]. In addition, 20-HETE was found to be involved in abnormalities related to liver diseases, particularly cirrhosis [93]. While 20-HETE and PGs are excreted at similar rates in normal subjects, it was found that excretory rates of 20-HETE were several-fold higher than those of PGs and  $\text{TxB}_2$  in patients with cirrhosis [93,139]. Recently, 20-HETE demonstrated a counter regulatory effect on the endogenous epoxygenases in the liver. Thus the tuning of 20-HETE and EETs formation and degradation may provide therapeutic benefits; given that they have opposite effects in several diseases [89,140]. Interestingly, 20-HETE level in the urine of cirrhotic patients with ascites is much higher than in case of cirrhosis without ascites which in turn is higher than excretion rates in normal individuals [139]. In patients with hepatic cirrhosis, 20-HETE is produced in increased amounts in the preglomerular microcirculation resulting in constriction of renal vasculature, reduction of renal blood flow and depression of renal hemodynamics [93,139]. Of interest, CYP4F2 was found to be exclusively expressed in the liver of CMV-CYP4F2 transgenic mice, driven by cyto-megalovirus (CMV) promoter, with no effect on 20-HETE levels in the urine, kidney, and blood or even on systolic blood pressure. In contrast, KAP-CYP4F2 transgenic mice, driven by kidney androgen-regulated protein (KAP) promoter, were found to overexpress renal CYP4F2 and to have high 20-HETE levels in urine and blood, in addition to elevated blood pressure [88].

## 4. Role of 20-HETE in the Respiratory System

### 4.1. Distribution of 20-HETE in Pulmonary Tissues

In the lung, 20-HETE is produced from vascular and non-vascular tissues; it was detected in pulmonary arteries, bronchi, and endothelium [141,142]. 20-HETE modulates many physiological functions such as smooth muscle tone and electrolyte flux [141] and serves as a paracrine factor in the pulmonary circulation when generated from nonvascular tissues [143]. Peripheral lung tissue, small and large pulmonary arteries, airways, and isolated VSM cells from small pulmonary arteries produced 20-HETE when incubated with AA [143]. In adult male rat lung, CYP4A mRNA was detected in pulmonary arterial endothelial and smooth muscle cells, bronchial epithelial and smooth muscle cells, type I epithelial cells, and macrophages. In addition, CYP4A protein was detected in rat pulmonary arteries and bronchi as well as cultured endothelial cells [141]. In rabbit, CYP4A is widely distributed in lung tissues as well [143]. In rats with acute pseudomonas pneumonia, 20-HETE level was depressed in microsomes prepared from lung [144], whereas in cystic fibrosis patients, 20-HETE was detected in freshly obtained sputum suggesting a role in these disease states [145].

### 4.2. Role of 20-HETE in Pulmonary Cell Survival

20-HETE mediates cell survival signaling in the pulmonary vasculature [146,147], it enhances survival and protects against apoptosis in bovine pulmonary artery endothelial cells (BPAECs) stressed by serum starvation or lipopolysaccharide [148,149]. 20-HETE enhanced survival and protected against

apoptosis in mouse pulmonary arteries (PAs) exposed to hypoxia reoxygenation *ex vivo* [146,148], and similar results obtained with 20-HETE analogs [146]. Protection from apoptosis was found to be dependent on reactive oxygen species (ROS) generation [148]; in addition, ROS is known to modulate vital physiological processes including cell growth, angiogenesis, contraction, and relaxation of VSM [150]. 20-HETE was found to increase both superoxide and NO production in BPAECs resulting in promotion of angiogenesis [148–151]. In addition, 20-HETE maintained the stability of mitochondria membrane and relieved the activation of caspase-9 and caspase-3 [149]. 5,14,20-HEDE and 5,14,20-HEDGE enhanced ROS production in endothelial cell in intact lung *ex vivo* as well as in cultured pulmonary artery endothelial cells [146].

#### 4.3. Role of 20-HETE in Pulmonary Vascular Tone

20-HETE alters vascular tone signaling in the pulmonary vasculature and plays a role in VSM remodeling [146,147,149,150]. Unlike its constrictor effects on systemic circulation, peripheral arteries, cerebral and renal vessels, 20-HETE is an endothelial-dependent dilator of pulmonary arteries [141,152,153]. 20-HETE relaxed contractile responses to 5-hydroxytryptamine concentration-dependently (0.01–10  $\mu\text{M}$ ) in fresh and 1 day culture of pulmonary arteries [154]. 20-HETE was found to induce a dose-dependent vasodilation of isolated human small pulmonary arteries which was inhibited by indomethacin [155], suggesting that 20-HETE could act as a COX-dependent vasodilator for human pulmonary arteries [156]. 20-HETE-dependent pulmonary arteries vasodilation is mediated by increasing intracellular  $\text{Ca}^{2+}$  concentration and NO release and found to be endothelial-dependent [152,157]. 20-HETE also contributes to vascular endothelial growth factor (VEGF)-stimulated NO release [157,158]; VEGF-induced NO release was attenuated by pretreating the BPAECs with DDMS as well as HET0016 [157]. The potent dilatory response to 20-HETE in human and rabbit pulmonary vascular and bronchiole rings was found to be dependent on an intact endothelium and COX enzyme [93,143]. Human lung microsomes were able to convert 20-HETE into prostanoids suggesting that COX in vascular tissue metabolizes 20-HETE to a vasodilatory compound [155]. Of interest, CYP4 has a unique expression in BPAECs versus systemic arterial endothelial cells suggesting that CYP4 could be an important mediator of endothelial-dependent vasoreactivity in pulmonary arteries [157]. Moreover, a recent study showed that 20-HETE, through gap junctions, appears to modulate smooth muscle myosin heavy chain expression and contribute to the sustained state of hypoxic pulmonary vasoconstriction development [159].

Interestingly, 20-HETE was demonstrated to be more potent vasoconstrictors than phenylephrine and KCl on small pulmonary arteries of rat and did not exhibit any relaxant effects on pulmonary artery rings precontracted with phenylephrine. Potency of 20-HETE as a vasoconstrictor in small pulmonary arteries was attenuated in pulmonary artery rings from lung with pneumonia [156]. It seems that 20-HETE has varied vasoactive effects dependent on the vascular beds studied, where vasoactive effects of 20-HETE can be influenced by the activity of other enzyme systems such as NOS and COX [156]. In sheep pulmonary artery, 20-HETE has a predominant role in the inhibition of vascular  $\text{Na}^+\text{-K}^+\text{-ATPase}$  activity, where it significantly attenuated KCl-induced relaxations. In addition, AA caused concentration-dependent inhibition of KCl-induced relaxations and increases basal arterial tone in pulmonary vasculature in sheep, an effect which was completely reversed by 17-ODYA as well as HET0016 [160]. Also in contrast to its action in adult pulmonary circulation, 20-HETE causes constriction in newborn pulmonary resistance-level arteries at resting tone [153] and was found to be released in fetal pulmonary circulation in response to acute increases in pulmonary artery pressure resulting in vasoconstriction [161]. 20-HETE as a vasoconstrictor, causes blockade of  $\text{Ca}^{2+}$ -activated  $\text{K}^+$  ( $\text{K}_{\text{Ca}}$ ) channels and inhibits the formation of NO [93]. Inhibition of 20-HETE might have a therapeutic role in neonatal conditions characterized by pulmonary hypertension; DDMS was found to abolish the vasoconstrictor response to ductus arteriosus compression in the presence of nitro-L-arginine (L-NA; to inhibit shear-stress vasodilation) [161].

#### 4.4. Role of 20-HETE in the Airways

In guinea pigs, airway smooth muscle (ASM) cells were found to produce 20-HETE which acted as a bronchoconstrictor and induced concentration-dependent tonic responses [94,162]. However, in human ASM, 20-HETE causes a concentration-dependent relaxation in bronchi precontracted with methacholine or AA [163]. Similarly, 20-HETE produced a concentration-dependent relaxation of rabbit bronchial rings precontracted with KCl or histamine [164]. Differences between observations regarding 20-HETE effect on ASM are likely related to inter-species differences [163]. In rabbit, 20-HETE modulates airway resistance in a COX-dependent manner; 20-HETE-dependent relaxation of bronchial rings was blocked by indomethacin suggesting that epithelial COX converts 20-HETE to a bronchial relaxant which elicited relaxation of bronchial rings [164]. However, in human bronchi, the responses to 20-HETE were not modified by indomethacin pretreatments. Moreover, 20-OH-PGE<sub>2</sub> had basically no relaxing effect on bronchi precontracted with methacholine chloride, suggesting that the relaxing effect induced by 20-HETE was not related to prostanoid formation [163]. 20-HETE-dependent hyperpolarization and controlled relaxation of ASM in human distal bronchi depends on activation of large conductance K<sub>Ca</sub> channels [163]. Interestingly, 20-HETE seems to play an important role in mediating acute ozone-induced airway hyper-responsiveness responsible for increasing morbidity and mortality in patients with obstructive airway diseases and asthma [165]. Interestingly, a recent study performed in Balb/c mice showed that local administration of 20-HETE led to proinflammatory action, associated with airway neutrophilia and macrophage activation, thus contributing to airway hyperresponsiveness [166].

### 5. Role of 20-HETE in the Brain

#### 5.1. Formation, Metabolism and Regulation of 20-HETE in the Brain

Human CYP2U1 metabolizes AA exclusively to 19-HETE and 20-HETE with abundant transcripts in cerebellum suggesting an important role in fatty acid signaling processes in brain [167]. Brain astrocytes synthesize and release 20-HETE which acts as cerebral arterial myocyte constrictor [168]. In addition, cerebral microvessels convert 20-HETE to 20-COOH-AA which produces vasoconstriction in these vessels, this reaction was found to be catalyzed by alcohol dehydrogenase (ADH), mainly ADH<sub>4</sub> [169]. As for regulation, PaCO<sub>2</sub> is an important factor in the regulation of cerebral circulation; changes in CO<sub>2</sub> concentration could cause changes in cerebral blood flow. CO<sub>2</sub> can decrease the expression of brain CYP4A during hypercapnia and increase its expression during hypocapnia, suggesting that 20-HETE plays an important role in CO<sub>2</sub>-mediated cerebrovascular reactivity [170]. NO was also found to affect 20-HETE synthesis by decreasing its level and inhibiting its formation [171].

#### 5.2. Role of 20-HETE in Regulating Vascular Tone in Brain

Brain does not store glycogen and thus requires a constant supply of glucose and oxygen for the continuous demands of cerebral function [172]; hence, the control of cerebral vessel diameter and cerebral blood flow is of fundamental importance in maintaining healthy brain function [173]. 20-HETE has significant role in the regulation of vascular tone, autoregulation of cerebral blood flow, and the neurovascular coupling (coupling of regional brain blood flow to neuronal activity) [174–176]. 20-HETE was found to be generated in various cell types in the brain and cerebral blood vessels [174,177]. Glial cells, non-neuronal cells, were found to play an important role in mediating neurovascular coupling by inducing the production of EETs and 20-HETE, which dilate and constrict vessels, respectively [178,179]. Recent studies have shown that astrocytes, characteristic star-shaped glial cells, are critical players in the regulation of cerebral blood vessel diameter; astrocytes produce 20-HETE from AA [173]. Furthermore, 20-HETE has been implicated in arteriolar constriction during astrocyte activation in brain slices, and modulates vasodilation in cerebral cortex during sensory activation [171]. 20-HETE synthesis limits the duration

of the response to prolonged activation of Group I metabotropic glutamate receptors (mGluR) on astrocytes. Under normal conditions *in vivo* stimulation of mGluR increases cerebral blood flow [180]. Protein kinase C was found to be an integral part of the signal transduction pathway by which 20-HETE elicits vasoconstriction of cerebral arteries and inhibits the whole cell  $K^+$  current in cat cerebral VSM [181]. 20-HETE also activates L-type calcium current in cerebral arterial smooth muscles [78]. Interestingly, it was found that 20-HETE is an important contributor to cerebral vasoconstriction associated with the onset of ventilation at birth [182]. Recent studies showed that 20-HETE-dependent vasoconstriction in the cerebellum is mediated by metabotropic glutamate receptors [183]. Moreover, 20-HETE induces cerebral parenchymal arteriolar constriction via superoxide production resulting from NADPH oxidase activation, and propofol could prevent this constriction via inhibiting NADPH oxidase [184]. Similarly, 20-HETE inhibitors were found to be associated with a decrease in superoxide production and activation of caspase-3 [185]. Although vasodilation of the brain blood vessels is known to be mediated by prostaglandin E<sub>2</sub>, nitric oxide production is also needed to suppress 20-HETE formation [186]. Of interest, 20-HETE could dilate mouse basilar artery precontracted with U-46619, a thromboxane mimetic, *in vitro*. This action was inhibited by indomethacin suggesting a COX-dependent mechanism. In fact, mouse brain endothelial cells were found to convert 20-HETE to 20-OH-PGE<sub>2</sub>, which was as potent as PGE<sub>2</sub> in dilating the basilar artery [187].

### 5.3. Role of 20-HETE in Cerebral Ischemia/Reperfusion (I/R) Injury

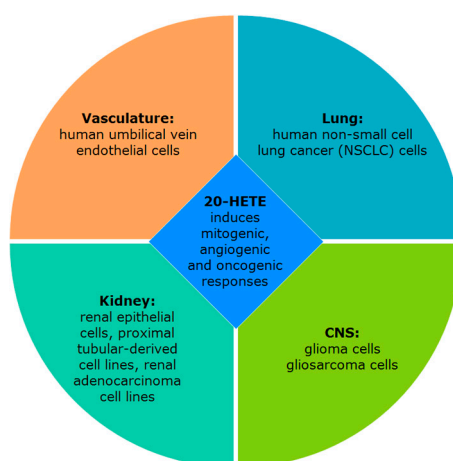
20-HETE is a potent vasoconstrictor of cerebral microvessels which contributes to I/R injury [188–191] being a mediator of free radical formation and tissue death [119]. 20-HETE plays an important role in the development of neurological and functional deficits, and contributes to infarct size after focal cerebral ischemia [192,193]. It also contributes to neurodegeneration after global cerebral ischemia in immature brain [193]. In rat subarachnoid hemorrhage (SAH) model, 20-HETE formation was found to be substantially elevated in the cerebrospinal fluid (CSF) with a concomitant 30% decrease in cerebral blood flow [189,194,195]. Similar data was obtained in aneurysmal subarachnoid hemorrhage (aSAH) model; 20-HETE was reported to affect cerebral microvascular tone and cerebral blood flow [196]. 20-HETE levels in CSF were also associated with delayed cerebral ischemia, neurological decline, and long-term functional and neuropsychological impairment [196]. GG genotype and G allele of CYP4F2 was associated with ischemic stroke in the male Northern Chinese Han population [197]. Interestingly, 20-HETE was present at physiologically-relevant concentrations in CSF of SAH patients [189].

Inhibitors of 20-HETE synthesis reduced infarct volume and decreased cerebral damage after cerebral ischemia and after I/R in brain without altering blood flow providing direct neuroprotective actions [174,185,198]. *In vivo*, DDMS and 6,15,20-HEDE were found to attenuate autoregulation of cerebral blood flow to elevation of arterial pressure [175]. HET0016 administration reduced brain damage in a rat model of thromboembolic stroke [199] and it protects blood brain barrier dysfunction after I/R through regulating the expression of MMP-9 and tight junction proteins. Moreover, this protection may be due to inhibition of oxidative stress and JNK pathway [200]. Also, rats treated with HET0016, 90 min prior to temporary middle cerebral artery occlusion, showed 79.6% reduction in 20-HETE in the cortex, pronounced reduction in lesion volume and attenuation of the decrease in cerebral blood flow [191]. 6,15,20-HEDE showed similar effects to HET0016 in reducing infarct size after transient occlusion of the middle cerebral artery [198]. In neonatal piglets, HET0016 administration after hypoxia-ischemia improved early neurological recovery and protected neurons in putamen [193]. Blockade of the synthesis of 20-HETE with TS-011 opposed cerebral vasospasm and reversed the fall in cerebral blood flow following SAH. In addition, it reduced infarct size and improved neurological deficits in ischemic models of stroke [188,201,202]. TS-011 reduced infarct volume in rats after transient occlusion of the middle cerebral artery and reduced neurological deficits as well [198,202]. When given in combination with tissue plasminogen activator, TS-011 improved neurological outcomes in the stroke model in

monkey [202]. Thus, TS-011 may provide benefits in patients suffering ischemic stroke [192]. In vitro application of DDMS, or 6,15,20-HEDE eliminated pressure-induced constriction of rat middle cerebral arteries [175]. Organotypic hippocampal slice cultures subjected to oxygen-glucose deprivation (OGD) and reoxygenation showed 2-fold increase in 20-HETE production, however inhibition of 20-HETE synthesis by HET0016 or action by 6,15,20-HEDE reduced the cell death. On the other hand, administration of 5,14,20-HEDE increased injury after OGD [185].

## 6. Role of 20-HETE in Tumors

Increased generation of 20-HETE was reported to induce mitogenic and angiogenic responses both in vitro and in vivo (summarized in Figure 6) [203,204].



**Figure 6.** 20-HETE role in carcinogenicity.

In human umbilical vein endothelial cells, administration of 5,14,20-HEDE induced mitogenesis, whereas HET0016 abolished the mitogenic response to VEGF [205]. 20-HETE is also considered a mitogen for smooth muscle cells [43]. 5,14,20-HEDE induced angiogenesis in rat cornea, whereas HET0016 inhibited growth factor-induced angiogenesis by 80%–90% [205]. In lung, 20-HETE was found to promote tumor angiogenesis and metastasis in human non-small cell lung cancer (NSCLC) cells. In vitro, addition of 5,14,20-HEDE or transfection of A549 cells, a human NSCLC cell line, with CYP4A11 expression vector significantly induced invasion, whereas treatment with HET0016 or 6,15,20-HEDE inhibited invasion. In vivo, CYP4A11 transfection significantly increased tumor weight, microvessel density, and lung metastasis, whereas HET0016 or 6,15,20-HEDE administration decreased tumor volume, microvessel density, and spontaneous pulmonary metastasis occurrences [206]. In kidney, 20-HETE has been reported to promote mitogenicity and proliferation in renal epithelial cells [207,208]. In vitro, 20-HETE was found to be a potent mitogen to swine proximal tubular-derived cell lines, LLC-PK1 and opossum kidney (OK) [209]. However no mitogenic effects were observed with 20-HETE in LLC-PK1cl4, a subclone from the parental LLC-PK1 cells [210]. HET0016 and 6,15,20-HEDE inhibited the proliferation of 786-O and 769-P, human renal adenocarcinoma cell lines, while having little effect on the proliferation of primary cultures of normal human proximal tubule epithelial cells. In vivo, 6,15,20-HEDE administered daily to athymic nude mice implanted subcutaneously with 786-O cells, reduced the growth of the tumors by 84% [207]. In benign prostatic hypertrophy and prostate cancer patients, urinary concentrations of 20-HETE were significantly higher than normal subjects and it was decreased to normal concentrations after removal of prostate gland [211]. Moreover, Vanella et al. showed that ellagic acid (an antioxidant) mediates a new pathway for its chemotherapeutic property, other than its anti-proliferative and pro-differentiation properties, through a mechanism that involves a decrease in 20-HETE synthesis in prostate cancer cells [212]. In human mammary carcinoma, CYP4Z1 which considered a novel CYP4 is over-expressed and was found to be associated with

high-grade tumors and poor prognosis, in addition, stable expression of CYP4Z1 in T47D human breast cancer cells lead to higher contents of 20-HETE, whereas HET0016 potently inhibited the tumor-induced angiogenesis with associated changes in the intracellular levels of 20-HETE [213]. Additionally, HET0016 inhibits pro-angiogenic factors and ceases growth of triple negative breast cancer in mice [214].

Similarly, samples from thyroid, breast, colon, and ovarian cancer revealed that expression of CYP4A/4F genes is highly elevated in cancer samples as compared to matched normal tissues [204]. As for CNS, 20-HETE was found to have proto-oncogenic properties in U251 human glioma cells, as pretreatment with exogenous 20-HETE and 5,14,20-HEDE increased U251 cell proliferation [215,216]. Transfection of U251 cells with CYP4A1 cDNA increased the formation of 20-HETE and increased their proliferation rate by 2-fold, whereas HET0016, small interfering RNA (siRNA) against the enzyme, and 6,15,20-HEDE abolished this hyperproliferation [215]. In vivo, implantation of CYP4A1 transfected U251 cells in the brain of nude rats resulted in a 10-fold larger tumor volume after ten days [215]. HET0016 inhibited U251 basal cell proliferation and decreased its induced angiogenesis [216]. Similar results obtained in 9L rat gliosarcoma cells; 5,14,20-HEDE increased its proliferation in vitro, while HET0016 achieved 55% reduction in proliferation after 48 h of incubation. In vivo, chronic administration of HET0016 for two weeks reduced the volume of 9L tumors by 80%, and increased mean survival time of the animals [217]. Interestingly, although both CYP4A mRNA and protein were detected in U251, it did not synthesize 20-HETE in the presence of AA suggesting that HET0016 suppresses U251 proliferation in vitro by mechanisms that may involve activities other than inhibiting 20-HETE synthesis [215,216]. HET0016 is also able to inhibit tumor growth and migration depending on the schedule of drug administration. The addition of HET0016 to vatalanib (a small molecule protein kinase inhibitor that inhibits angiogenesis) may mitigate the undesired effect of vatalanib [218]. Similarly, neither 9L cells grown in vitro nor 9L tumors removed produced 20-HETE when incubated with AA; however, the normal surrounding brain tissue avidly makes 20-HETE. This data suggests that HET0016 may act in vivo by inhibiting the formation of 20-HETE by the surrounding tissue, whereas its antiproliferative effects in vitro seems to be unrelated to its ability to inhibit the formation of 20-HETE [216,217]. In traditional Chinese medicine, *Scolopendra subspinipes mutilans* L. Koch has been used for cancer treatment for hundreds of years. *Scolopendra* Polysaccharide-Protein Complex (SPPC) significantly inhibited the growth of S180, mouse sarcoma cell line, transplanted in mice. SPPC prolonged the survival time of H22, mouse hepatoma cell line, bearing mice. SPPC diminished CYP4A and 20-HETE in tumor-associated macrophages [219].

## 7. Role of 20-HETE in Metabolic Syndrome and Diabetes

Mice fed high-fat diet had significantly higher 20-HETE/(EET+DHET) formation rate ratio in the liver and kidney, suggesting a role in pathogenesis and progression of metabolic syndrome [220]. Moreover, increased levels of 20-HETE significantly disrupt survival and function of endothelial cells in metabolic syndrome leading to impaired coronary collateral growth, hence 20-HETE antagonists could be a potential therapeutic choice in this case [221]. In vitro, 20-HETE has been shown to be involved in adipogenesis. Kim et al. examined the effect of exogenous 20-HETE on mesenchymal stem cell-derived adipocytes and concluded that 20-HETE increased adipogenesis in a concentration-dependent manner [222]. In vivo, 20-HETE contributes to the elevation in vascular reactivity in diabetic animals [223], and was reported to play a role in diabetes-enhanced vasoconstriction of mesenteric and renal vessels [224]. 20-HETE is also involved in the early decrease of retinal hemodynamics in diabetic mice which could be attenuated by HET0016 [224]. Chronic treatment of the diabetic rats with ABT or HET0016 attenuated the responses to vasoconstrictors, norepinephrine, ET-1, and AngII, in mesenteric vascular bed and renal artery segments [223]. Eid et al. suggested that 20-HETE inhibitors could have a pivotal therapeutic potential in the alleviation of diabetic nephropathy [225]. Moreover, hyperglycemia decreases 20-HETE production in the glomeruli suggesting an important role in glomerular damage in the early stage of diabetic nephropathy. Rats treated with streptozotocin for five weeks, to induce

diabetes, had a significant decrease in glomerular CYP4A expression; however, when they were treated with clofibrate, glomerular CYP4A expression and 20-HETE production were induced while urinary protein excretion was reduced [37]. Isolated perfused kidney from rats with streptozotocin-induced diabetes show great reduction in 20-HETE release, whereas insulin treatment for two weeks reverses hyperglycemia and renal deficiency in 20-HETE [226].

## 8. Summary and Conclusions

The formation of 20-HETE has been demonstrated to be through different members of the CYP  $\omega$ -hydroxylase enzymes, the CYP4A, CYP4F and CYP2U subfamilies. However, the predominant form responsible for 20-HETE formation differs from organ to organ, from species to species and from males to females. For example, Cyp4a12a is the predominant 20-HETE forming enzyme in the mouse kidney and its expression levels dictates the sex and strain specific differences in 20-HETE formation and may explain sex and strain differences in susceptibility to hypertension and target organ damage [48]. In female mice compared to male mice, low AA hydroxylase activity was observed in the kidney and this was associated with very low Cyp4a12a mRNA and protein expression levels, despite high Cyp4a10 and Cyp4a14 expression levels [48]. Thus, these observations highlight the importance of determining the expression of each CYP  $\omega$ -hydroxylase isoform in different organs.

Although it has been previously reported that 20-HETE plays a negative role in the heart and vasculature [2,3,90,227], it has been demonstrated to have a protective effect in the kidney. 20-HETE plays an anti-hypertensive effect through its regulation of sodium reabsorption in the proximal tubule and TAL [21,38,41,47,48,61,70]. This effect protects the cardiovascular system from salt-retention hypertension, however 20-HETE is a potent constrictor produced by the preglomerular vasculature and could participate in the development of hypertension [40,43,56,71]. Hence it is obvious that a renal 20-HETE level is a double-edged sword, depending on its levels in various locations within the nephron. Moreover, 20-HETE plays a crucial role in renal I/R injury in addition to polycystic kidney diseases. Thus specific targeting of 20-HETE production and/or action might serve as a treatment strategy in renal diseases in the future.

In the liver, the role of 20-HETE is still to be determined although it represents 50%–75% of CYP-dependent AA metabolites in this organ [93,133]. Importantly, it has been demonstrated that 20-HETE is a potent activator of PPAR $\alpha$  and is supposed to exert important functions in lipid homeostasis and in controlling fat-dependent energy supply and metabolism [135,136]. On the other hand, 20-HETE levels have been shown to be elevated in liver pathophysiological disease states such as cirrhotic ascites [139]. Therefore, future studies investigating the physiological and pathophysiological role of hepatic 20-HETE will be of great importance.

The protective effect of 20-HETE is not only limited to the kidney, but it has been also demonstrated in the lung. For example, 20-HETE mediates cell survival signaling in pulmonary vasculature [146,147] and was found to protect against apoptosis in bovine pulmonary artery endothelial cells [148,149]. Moreover, 20-HETE was found to dilate the pulmonary artery in contrast to its vasoconstrictive effect in systemic circulation, peripheral arteries, cerebral and renal vessels [141,152,153]. The controversy between the vasodilator effect of 20-HETE in the lung and its vasoconstrictor effect in other vasculature could be attributed to a COX-dependent transformation of 20-HETE to metabolites possessing vasodilator effects (20-OH-PGI $_2$ , and 20-OH-PGE $_2$ ) [156]. However, this postulation requires further studies to uncover the exact mechanism.

Unlike the other organs, brain metabolizes AA to 20-HETE mainly through CYP2U1 [167], which is abundant in the cerebellum, implicating the importance of this enzyme in 20-HETE mediated fatty acid signaling processes. This is not the only difference between brain and the other organs. That is, brain does not store glycogen [172] as a reservoir of energy and thus requires continuous supply of glucose and oxygen. In this regard, 20-HETE rises as a crucial modulator of brain vascular tone, cerebral blood flow, and neurovascular coupling. Furthermore, 20-HETE is a potent vasoconstrictor for cerebral microvessels contributing to ischemia reperfusion injury [188–191].

Altogether, maintaining homeostatic levels of 20-HETE is pivotal in determining brain functions and altering its levels might contribute to brain pathophysiological disease states.

Of interest, although 20-HETE through its vasoconstrictor effect might appear at the first glance as a tumor suppressor, recent studies have shown that 20-HETE promotes tumor formation through promoting angiogenesis and mitogenesis. Thus targeting its production and/or action might serve as a treatment strategy in carcinogenesis.

Further studies are needed to investigate the exact events and mechanisms associated with different 20-HETE levels in vital organs. Our success in understanding these events would help in rational designing of therapeutic strategies to reduce 20-HETE-mediated disorders.

**Acknowledgments:** This work was supported by a grant from the Canadian Institutes of Health Research (CIHR) [Grant MOP 106665]. OHE is the recipient of Alberta Innovates-Health Solutions graduate studentship and Alberta Cancer Foundation Scholarship.

**Conflicts of Interest:** The authors declare no conflict of interest.

### Abbreviations

10-SUYS	acetylenic fatty acid sodium 10-undecynyl sulfate
17-ODYA	17-octadecynoic acid
20-COOH-AA	20-carboxyeicosatetraenoic acid
20-HETE	20-hydroxyeicosatetraenoic acid
20-OH PGH2	hydroxyl analogue of vasoconstrictor prostaglandin H2
5,14,20-HEDE; WIT003	20-hydroxyeicosa-5(Z),14(Z)-dienoic acid
5,14,20-HEDGE	<i>N</i> -[20-hydroxyeicosa-5(Z),14(Z)-dienoyl]glycine
6,15,20-HEDE; WIT002	20-hydroxyeicosa-6(Z),15(Z)-dienoic acid
6,15,20-HEDGE	20-hydroxyeicosa-6(Z),15(Z)-dienoyl]glycine
AA	Arachidonic acid
ABT	1-Aminobenzotriazole
ADH	alcohol dehydrogenase
AngII	vasoconstrictors Angiotensin II
aSAH	aneurysmal subarachnoid hemorrhage model
ASM	airway smooth muscle cells
BPAECs	bovine pulmonary artery endothelial cells
CMV	cyto-megalovirus
CO	carbon monoxide
CoCl <sub>2</sub>	Cobalt(II) chloride
COX	cyclooxygenase
CSF	cerebrospinal fluid
CYP	cytochrome P450
DBDD	dibromododec-11-enoic acid
DDMS	<i>N</i> -methylsulfonyl-12,12-dibromododec-11-enamide
EETs	epoxyeicosatrienoic acids
eNOS	Endothelial NOS
ET	endothelin
EGFR	epidermal growth factor receptor
HET0016	<i>N</i> -hydroxy- <i>N'</i> -(4-butyl-2methylphenyl)formamidine
HETEs	hydroxyeicosatetraenoic acids
HO	heme oxygenase enzymes
I/R	Ischemia/Reperfusion injury
KAP	kidney androgen-regulated protein
K <sub>Ca</sub>	Ca <sup>2+</sup> -activated K <sup>+</sup> channels
L-NA	nitro-L-arginine
L-NAME	<i>N</i> (ω)-nitro-L-arginine-methyl ester
LOX	lipoxygenase
LTs	leukotrienes
LXs	lipoxins
mGluR	Group I metabotropic glutamate receptors
NOS	NO synthase
NSCLC	non-small cell lung cancer cells



OGD	oxygen-glucose deprivation
Palb	albumin permeability
PAs	pulmonary arteries
PGs	prostaglandins
PKC	protein kinase C
PPAR $\alpha$	Peroxisome proliferator-activated receptor $\alpha$
ROS	reactive oxygen species
RUPP	reductions in uterine perfusion pressure
RVR	renal vascular resistance
SAH	subarachnoid hemorrhage model
SD	Sprague Dawley
sEH	soluble epoxide hydrolase
siRNA	small interfering RNA
SPPC	Scolopendra Polysaccharide-Protein Complex
TAL	thick ascending limb of the loop of Henle
TGF- $\beta$	transforming growth factor-beta
TS011	<i>N</i> -(3-Chloro-4-morpholin-4-yl)Phenyl- <i>N'</i> -hydroxyimido formamide
VEGF	vascular endothelial growth factor
VSM	vascular smooth muscle

## References

1. Imig, J.D. Epoxides and soluble epoxide hydrolase in cardiovascular physiology. *Physiol. Rev.* **2012**, *92*, 101–130. [[CrossRef](#)]
2. Elshenawy, O.H.; Anwar-Mohamed, A.; Abdelhamid, G.; El-Kadi, A.O. Murine atrial hl-1 cell line is a reliable model to study drug metabolizing enzymes in the heart. *Vascul. Pharmacol.* **2012**, *58*, 326–333. [[CrossRef](#)] [[PubMed](#)]
3. Elshenawy, O.H.; Anwar-Mohamed, A.; El-Kadi, A.O. 20-Hydroxyeicosatetraenoic acid is a potential therapeutic target in cardiovascular diseases. *Curr. Drug Metab.* **2013**, *14*, 706–719. [[CrossRef](#)] [[PubMed](#)]
4. Maayah, Z.H.; El-Kadi, A.O. The role of mid-chain hydroxyeicosatetraenoic acids in the pathogenesis of hypertension and cardiac hypertrophy. *Arch. Toxicol.* **2016**, *90*, 119–136. [[CrossRef](#)] [[PubMed](#)]
5. Kroetz, D.L.; Xu, F. Regulation and inhibition of arachidonic acid omega-hydroxylases and 20-hete formation. *Annu. Rev. Pharmacol. Toxicol.* **2005**, *45*, 413–438. [[CrossRef](#)] [[PubMed](#)]
6. Xu, F.; Falck, J.R.; Ortiz de Montellano, P.R.; Kroetz, D.L. Catalytic activity and isoform-specific inhibition of rat cytochrome P450 4f enzymes. *J. Pharmacol. Exp. Ther.* **2004**, *308*, 887–895. [[CrossRef](#)] [[PubMed](#)]
7. Fan, F.; Ge, Y.; Lv, W.; Elliott, M.R.; Muroya, Y.; Hirata, T.; Booz, G.W.; Roman, R.J. Molecular mechanisms and cell signaling of 20-hydroxyeicosatetraenoic acid in vascular pathophysiology. *Front Biosci.* **2016**, *21*, 1427–1463.
8. McGiff, J.C.; Quilley, J. 20-HETE and the kidney: Resolution of old problems and new beginnings. *Am. J. Physiol.* **1999**, *277*, 607–623.
9. Carroll, M.A.; McGiff, J.C. A new class of lipid mediators: Cytochrome P450 arachidonate metabolites. *Thorax* **2000**, *55* (Suppl. 2), 13–16. [[CrossRef](#)]
10. Oyekan, A.O.; McGiff, J.C. Functional response of the rat kidney to inhibition of nitric oxide synthesis: Role of cytochrome P450-derived arachidonate metabolites. *Br. J. Pharmacol.* **1998**, *125*, 1065–1073. [[CrossRef](#)] [[PubMed](#)]
11. Askari, B.; Bell-Quilley, C.P.; Fulton, D.; Quilley, J.; McGiff, J.C. Analysis of eicosanoid mediation of the renal functional effects of hyperchloremia. *J. Pharmacol. Exp. Ther.* **1997**, *282*, 101–107. [[PubMed](#)]
12. Xu, F.; Straub, W.O.; Pak, W.; Su, P.; Maier, K.G.; Yu, M.; Roman, R.J.; Ortiz De Montellano, P.R.; Kroetz, D.L. Antihypertensive effect of mechanism-based inhibition of renal arachidonic acid omega-hydroxylase activity. *Am. J. Physiol. Regul. Integr. Comp. Physiol.* **2002**, *283*, 710–720. [[CrossRef](#)] [[PubMed](#)]
13. Williams, J.M.; Murphy, S.; Burke, M.; Roman, R.J. 20-hydroxyeicosatetraenoic acid: A new target for the treatment of hypertension. *J. Cardiovasc. Pharmacol.* **2010**, *56*, 336–344. [[CrossRef](#)] [[PubMed](#)]
14. Tunctan, B.; Korkmaz, B.; Buharalioglu, C.K.; Firat, S.S.; Anjaiah, S.; Falck, J.; Roman, R.J.; Malik, K.U. A 20-hydroxyeicosatetraenoic acid agonist, *n*-[20-hydroxyeicosa-5(z),14(z)-dienoyl]glycine, opposes the fall in blood pressure and vascular reactivity in endotoxin-treated rats. *Shock* **2008**, *30*, 329–335. [[CrossRef](#)] [[PubMed](#)]

15. Regner, K.R.; Zuk, A.; Van Why, S.K.; Shames, B.D.; Ryan, R.P.; Falck, J.R.; Manthathi, V.L.; McMullen, M.E.; Ledbetter, S.R.; Roman, R.J. Protective effect of 20-HETE analogues in experimental renal ischemia reperfusion injury. *Kidney Int.* **2009**, *75*, 511–517. [[CrossRef](#)] [[PubMed](#)]
16. Nakamura, T.; Ishii, T.; Miyata, N.; Taniguchi, K.; Tomishima, Y.; Ueki, T.; Sato, M. Design and synthesis of 1-(4-benzoylphenyl)imidazole derivatives as new potent 20-HETE synthase inhibitors. *Bioorg. Med. Chem. Lett.* **2004**, *14*, 5305–5308. [[CrossRef](#)] [[PubMed](#)]
17. Yanes, L.L.; Lima, R.; Moulana, M.; Romero, D.G.; Yuan, K.; Ryan, M.J.; Baker, R.; Zhang, H.; Fan, F.; Davis, D.D. Postmenopausal hypertension: Role of 20-HETE. *Am. J. Physiol. Regul. Integr. Comp. Physiol.* **2011**, *300*, 1543–1548. [[CrossRef](#)] [[PubMed](#)]
18. Chabova, V.C.; Kramer, H.J.; Vaneckova, I.; Vernerova, Z.; Eis, V.; Tesar, V.; Skaroupkova, P.; Thumova, M.; Schejbalova, S.; Huskova, Z. Effects of chronic cytochrome P-450 inhibition on the course of hypertension and end-organ damage in ren-2 transgenic rats. *Vascul. Pharmacol.* **2007**, *47*, 145–159. [[CrossRef](#)] [[PubMed](#)]
19. Moreno, J.J. Eicosanoid receptors: Targets for the treatment of disrupted intestinal epithelial homeostasis. *Eur. J. Pharmacol.* **2016**, *796*, 7–19. [[CrossRef](#)] [[PubMed](#)]
20. Garcia, V.; Schwartzman, M.L. Recent developments on the vascular effects of 20-hydroxyeicosatetraenoic acid. *Curr. Opin. Nephrol. Hypertens.* **2017**, *26*, 74–82. [[CrossRef](#)] [[PubMed](#)]
21. Quigley, R.; Baum, M.; Reddy, K.M.; Griener, J.C.; Falck, J.R. Effects of 20-HETE and 19(s)-HETE on rabbit proximal straight tubule volume transport. *Am. J. Physiol. Renal Physiol.* **2000**, *278*, 949–953.
22. Omata, K.; Abraham, N.G.; Schwartzman, M.L. Renal cytochrome P-450-arachidonic acid metabolism: Localization and hormonal regulation in shr. *Am. J. Physiol.* **1992**, *262*, 591–599.
23. Oliw, E.H. Biosynthesis of 20-hydroxyeicosatetraenoic acid (20-HETE) and 12 (s)-HETE by renal cortical microsomes of the cynomolgus monkey. *Eicosanoids* **1990**, *3*, 161–164. [[PubMed](#)]
24. Lu, M.; Zhu, Y.; Balazy, M.; Reddy, K.M.; Falck, J.R.; Wang, W. Effect of angiotensin ii on the apical K<sup>+</sup> channel in the thick ascending limb of the rat kidney. *J. Gen. Physiol.* **1996**, *108*, 537–547. [[CrossRef](#)]
25. Escalante, B.; Erlij, D.; Falck, J.R.; McGiff, J.C. Cytochrome P450-dependent arachidonate metabolites affect renal transport in the rabbit. *J. Cardiovasc. Pharmacol.* **1993**, *22* (Suppl. 2), 106–108. [[CrossRef](#)]
26. Marji, J.S.; Wang, M.H.; Laniado-Schwartzman, M. Cytochrome P-450 4a isoform expression and 20-HETE synthesis in renal preglomerular arteries. *Am. J. Physiol. Renal Physiol.* **2002**, *283*, 60–67. [[CrossRef](#)] [[PubMed](#)]
27. Wang, M.H.; Guan, H.; Nguyen, X.; Zand, B.A.; Nasjletti, A.; Laniado-Schwartzman, M. Contribution of cytochrome P-450 4a1 and 4a2 to vascular 20-hydroxyeicosatetraenoic acid synthesis in rat kidneys. *Am. J. Physiol.* **1999**, *276*, 246–253.
28. Zhao, X.; Imig, J.D. Kidney cyP450 enzymes: Biological actions beyond drug metabolism. *Curr. Drug Metab.* **2003**, *4*, 73–84. [[CrossRef](#)] [[PubMed](#)]
29. Ward, N.C.; Tsai, I.J.; Barden, A.; van Bockxmeer, F.M.; Puddey, I.B.; Hodgson, J.M.; Croft, K.D. A single nucleotide polymorphism in the cyp4f2 but not cyp4a11 gene is associated with increased 20-HETE excretion and blood pressure. *Hypertension* **2008**, *51*, 1393–1398. [[CrossRef](#)] [[PubMed](#)]
30. Harder, D.R.; Campbell, W.B.; Roman, R.J. Role of cytochrome P-450 enzymes and metabolites of arachidonic acid in the control of vascular tone. *J. Vasc. Res.* **1995**, *32*, 79–92. [[CrossRef](#)] [[PubMed](#)]
31. Wang, J.S.; Zhang, F.; Jiang, M.; Wang, M.H.; Zand, B.A.; Abraham, N.G.; Nasjletti, A.; Laniado-Schwartzman, M. Transfection and functional expression of CYP4A1 and CYP4A2 using bicistronic vectors in vascular cells and tissues. *J. Pharmacol. Exp. Ther.* **2004**, *311*, 913–920. [[CrossRef](#)] [[PubMed](#)]
32. Kaide, J.; Wang, M.H.; Wang, J.S.; Zhang, F.; Gopal, V.R.; Falck, J.R.; Nasjletti, A.; Laniado-Schwartzman, M. Transfection of CYP4A1 cDNA increases vascular reactivity in renal interlobar arteries. *Am. J. Physiol. Renal Physiol.* **2003**, *284*, 51–56. [[CrossRef](#)] [[PubMed](#)]
33. Ge, Y.; Murphy, S.R.; Lu, Y.; Falck, J.; Liu, R.; Roman, R.J. Endogenously produced 20-HETE modulates myogenic and TGF response in microperfused afferent arterioles. *Prostaglandin Other Lipid Mediat.* **2013**, *102*, 42–48. [[CrossRef](#)] [[PubMed](#)]
34. Minuz, P.; Jiang, H.; Fava, C.; Turolo, L.; Tacconelli, S.; Ricci, M.; Patrignani, P.; Morganti, A.; Lechi, A.; McGiff, J.C. Altered release of cytochrome P450 metabolites of arachidonic acid in renovascular disease. *Hypertension* **2008**, *51*, 1379–1385. [[CrossRef](#)] [[PubMed](#)]
35. Dahly-Vernon, A.J.; Sharma, M.; McCarthy, E.T.; Savin, V.J.; Ledbetter, S.R.; Roman, R.J. Transforming growth factor- $\beta$ , 20-HETE interaction, and glomerular injury in DAHL salt-sensitive rats. *Hypertension* **2005**, *45*, 643–648. [[CrossRef](#)] [[PubMed](#)]

36. McCarthy, E.T.; Sharma, R.; Sharma, M. Protective effect of 20-hydroxyeicosatetraenoic acid (20-HETE) on glomerular protein permeability barrier. *Kidney Int.* **2005**, *67*, 152–156. [[CrossRef](#)] [[PubMed](#)]
37. Luo, P.; Zhou, Y.; Chang, H.H.; Zhang, J.; Seki, T.; Wang, C.Y.; Inscho, E.W.; Wang, M.H. Glomerular 20-HETE, EETs, and TGF- $\beta$ 1 in diabetic nephropathy. *Am. J. Physiol. Renal Physiol.* **2009**, *296*, 556–563. [[CrossRef](#)] [[PubMed](#)]
38. Stec, D.E.; Flasch, A.; Roman, R.J.; White, J.A. Distribution of cytochrome P-450 4A and 4F isoforms along the nephron in mice. *Am. J. Physiol. Renal Physiol.* **2003**, *284*, 95–102. [[CrossRef](#)] [[PubMed](#)]
39. Ito, O.; Alonso-Galicia, M.; Hopp, K.A.; Roman, R.J. Localization of cytochrome P-450 4A isoforms along the rat nephron. *Am. J. Physiol.* **1998**, *274*, 395–404.
40. Harder, D.R.; Narayanan, J.; Birks, E.K.; Liard, J.F.; Imig, J.D.; Lombard, J.H.; Lange, A.R.; Roman, R.J. Identification of a putative microvascular oxygen sensor. *Circ. Res.* **1996**, *79*, 54–61. [[CrossRef](#)] [[PubMed](#)]
41. Yamaguchi, Y.; Kirita, S.; Hasegawa, H.; Aoyama, J.; Imaoka, S.; Minamiyama, S.; Funae, Y.; Baba, T.; Matsubara, T. Contribution of CYP4A8 to the formation of 20-hydroxyeicosatetraenoic acid from arachidonic acid in rat kidney. *Drug Metab. Pharmacokinet.* **2002**, *17*, 109–116. [[CrossRef](#)] [[PubMed](#)]
42. Hercule, H.C.; Wang, M.H.; Oyekan, A.O. Contribution of cytochrome P450 4a isoforms to renal functional response to inhibition of nitric oxide production in the rat. *J. Physiol.* **2003**, *551*, 971–979. [[CrossRef](#)] [[PubMed](#)]
43. Jiang, M.; Mezentsev, A.; Kemp, R.; Byun, K.; Falck, J.R.; Miano, J.M.; Nasjletti, A.; Abraham, N.G.; Laniado-Schwartzman, M. Smooth muscle-specific expression of CYP4A1 induces endothelial sprouting in renal arterial microvessels. *Circ. Res.* **2004**, *94*, 167–174. [[CrossRef](#)] [[PubMed](#)]
44. Nguyen, X.; Wang, M.H.; Reddy, K.M.; Falck, J.R.; Schwartzman, M.L. Kinetic profile of the rat CYP4A isoforms: Arachidonic acid metabolism and isoform-specific inhibitors. *Am. J. Physiol.* **1999**, *276*, 1691–1700.
45. Botros, F.T.; Laniado-Schwartzman, M.; Abraham, N.G. Regulation of cyclooxygenase and cytochrome P450 derived eicosanoids by heme oxygenase in the rat kidney. *Hypertension* **2002**, *39*, 639–644. [[CrossRef](#)] [[PubMed](#)]
46. Kalsotra, A.; Cui, X.; Anakk, S.; Hinojos, C.A.; Doris, P.A.; Strobel, H.W. Renal localization, expression, and developmental regulation of P450 4f cytochromes in three substrains of spontaneously hypertensive rats. *Biochem. Biophys. Res. Commun.* **2005**, *338*, 423–431. [[CrossRef](#)] [[PubMed](#)]
47. Fidelis, P.; Wilson, L.; Thomas, K.; Villalobos, M.; Oyekan, A.O. Renal function and vasomotor activity in mice lacking the CYP4A14 gene. *Exp. Biol. Med.* **2010**, *235*, 1365–1374. [[CrossRef](#)] [[PubMed](#)]
48. Muller, D.N.; Schmidt, C.; Barbosa-Sicard, E.; Wellner, M.; Gross, V.; Hercule, H.; Markovic, M.; Honeck, H.; Luft, F.C.; Schunck, W.H. Mouse CYP4A isoforms: Enzymatic properties, gender- and strain-specific expression, and role in renal 20-hydroxyeicosatetraenoic acid formation. *Biochem. J.* **2007**, *403*, 109–118. [[CrossRef](#)] [[PubMed](#)]
49. Lasker, J.M.; Chen, W.B.; Wolf, I.; Blosswick, B.P.; Wilson, P.D.; Powell, P.K. Formation of 20-hydroxyeicosatetraenoic acid, a vasoactive and natriuretic eicosanoid, in human kidney. Role of cyp4f2 and cyp4a11. *J. Biol. Chem.* **2000**, *275*, 4118–4126. [[CrossRef](#)] [[PubMed](#)]
50. Muroya, Y.; Fan, F.; Regner, K.R.; Falck, J.R.; Garrett, M.R.; Juncos, L.A.; Roman, R.J. Deficiency in the formation of 20-hydroxyeicosatetraenoic acid enhances renal ischemia-reperfusion injury. *J. Am. Soc. Nephrol.* **2015**, *26*, 2460–2469. [[CrossRef](#)] [[PubMed](#)]
51. Stec, D.E.; Roman, R.J.; Flasch, A.; Rieder, M.J. Functional polymorphism in human CYP4F2 decreases 20-HETE production. *Physiol. Genomics* **2007**, *30*, 74–81. [[CrossRef](#)] [[PubMed](#)]
52. Cheng, M.K.; McGiff, J.C.; Carroll, M.A. Renal arterial 20-hydroxyeicosatetraenoic acid levels: Regulation by cyclooxygenase. *Am. J. Physiol. Renal Physiol.* **2003**, *284*, 474–479. [[CrossRef](#)] [[PubMed](#)]
53. Carroll, M.A.; Kemp, R.; Cheng, M.K.; McGiff, J.C. Regulation of preglomerular microvascular 20-hydroxyeicosatetraenoic acid levels by salt depletion. *Med. Sci. Monit.* **2001**, *7*, 567–572. [[PubMed](#)]
54. Alonso-Galicia, M.; Drummond, H.A.; Reddy, K.K.; Falck, J.R.; Roman, R.J. Inhibition of 20-HETE production contributes to the vascular responses to nitric oxide. *Hypertension* **1997**, *29*, 320–325. [[CrossRef](#)] [[PubMed](#)]
55. Oyekan, A.O.; Youseff, T.; Fulton, D.; Quilley, J.; McGiff, J.C. Renal cytochrome P450  $\omega$ -hydroxylase and epoxygenase activity are differentially modified by nitric oxide and sodium chloride. *J. Clin. Invest.* **1999**, *104*, 1131–1137. [[CrossRef](#)] [[PubMed](#)]
56. Quilley, J.; Qiu, Y.; Hirt, J. Inhibitors of 20-hydroxyeicosatetraenoic acid reduce renal vasoconstrictor responsiveness. *J. Pharmacol. Exp. Ther.* **2003**, *307*, 223–229. [[CrossRef](#)]

57. Ito, O.; Roman, R.J. Regulation of P-450 4a activity in the glomerulus of the rat. *Am. J. Physiol.* **1999**, *276*, 1749–1757.
58. Alonso-Galicia, M.; Sun, C.W.; Falck, J.R.; Harder, D.R.; Roman, R.J. Contribution of 20-HETE to the vasodilator actions of nitric oxide in renal arteries. *Am. J. Physiol.* **1998**, *275*, 370–378.
59. Sarkis, A.; Roman, R.J. Role of cytochrome P450 metabolites of arachidonic acid in hypertension. *Curr. Drug Metab.* **2004**, *5*, 245–256. [[CrossRef](#)] [[PubMed](#)]
60. Da Silva, J.L.; Zand, B.A.; Yang, L.M.; Sabaawy, H.E.; Lianos, E.; Abraham, N.G. Heme oxygenase isoform-specific expression and distribution in the rat kidney. *Kidney Int.* **2001**, *59*, 1448–1457. [[CrossRef](#)] [[PubMed](#)]
61. Lin, F.; Abraham, N.G.; Schwartzman, M.L. Cytochrome P450 arachidonic acid omega-hydroxylation in the proximal tubule of the rat kidney. *Ann. N. Y. Acad. Sci.* **1994**, *744*, 11–24. [[CrossRef](#)] [[PubMed](#)]
62. Ishizuka, T.; Ito, O.; Tan, L.; Ogawa, S.; Kohzuki, M.; Omata, K.; Takeuchi, K.; Ito, S. Regulation of cytochrome P-450 4a activity by peroxisome proliferator-activated receptors in the rat kidney. *Hypertens. Res.* **2003**, *26*, 929–936. [[CrossRef](#)] [[PubMed](#)]
63. Li, J.; Li, D.; Tie, C.; Wu, J.; Wu, Q.; Li, Q. Cisplatin-mediated cytotoxicity through inducing CYP4A 11 expression in human renal tubular epithelial cells. *J. Toxicol. Sci.* **2015**, *40*, 895–900. [[CrossRef](#)] [[PubMed](#)]
64. Sarkis, A.; Ito, O.; Mori, T.; Kohzuki, M.; Ito, S.; Verbalis, J.; Cowley, A.W., Jr.; Roman, R.J. Cytochrome P-450-dependent metabolism of arachidonic acid in the kidney of rats with diabetes insipidus. *Am. J. Physiol. Renal Physiol.* **2005**, *289*, 1333–1340. [[CrossRef](#)] [[PubMed](#)]
65. Maier, K.G.; Roman, R.J. Cytochrome P450 metabolites of arachidonic acid in the control of renal function. *Curr. Opin. Nephrol. Hypertens.* **2001**, *10*, 81–87. [[CrossRef](#)] [[PubMed](#)]
66. Zou, A.P.; Imig, J.D.; Kaldunski, M.; Ortiz de Montellano, P.R.; Sui, Z.; Roman, R.J. Inhibition of renal vascular 20-HETE production impairs autoregulation of renal blood flow. *Am. J. Physiol.* **1994**, *266*, 275–282.
67. Imaoka, S.; Funae, Y. The physiological role of P450-derived arachidonic acid metabolites. *Nihon Yakurigaku Zasshi* **1998**, *112*, 23–31. [[CrossRef](#)] [[PubMed](#)]
68. Zou, A.P.; Imig, J.D.; Ortiz de Montellano, P.R.; Sui, Z.; Falck, J.R.; Roman, R.J. Effect of P-450  $\omega$ -hydroxylase metabolites of arachidonic acid on tubuloglomerular feedback. *Am. J. Physiol.* **1994**, *266*, 934–941.
69. Schwartzman, M.L.; Omata, K.; Lin, F.M.; Bhatt, R.K.; Falck, J.R.; Abraham, N.G. Detection of 20-hydroxyeicosatetraenoic acid in rat urine. *Biochem. Biophys. Res. Commun.* **1991**, *180*, 445–449. [[CrossRef](#)]
70. Roman, R.J.; Alonso-Galicia, M. P-450 eicosanoids: A novel signaling pathway regulating renal function. *News Physiol. Sci.* **1999**, *14*, 238–242. [[PubMed](#)]
71. Kauser, K.; Clark, J.E.; Masters, B.S.; Ortiz de Montellano, P.R.; Ma, Y.H.; Harder, D.R.; Roman, R.J. Inhibitors of cytochrome P-450 attenuate the myogenic response of dog renal arcuate arteries. *Circ. Res.* **1991**, *68*, 1154–1163. [[CrossRef](#)] [[PubMed](#)]
72. Wu, C.C.; Mei, S.; Cheng, J.; Ding, Y.; Weidenhammer, A.; Garcia, V.; Zhang, F.; Gotlinger, K.; Manthathi, V.L.; Falck, J.R.; et al. Androgen-sensitive hypertension associates with upregulated vascular CYP4A12-20-HETE synthase. *J. Am. Soc. Nephrol.* **2013**, *24*, 1288–1296. [[CrossRef](#)] [[PubMed](#)]
73. Zhao, X.; Falck, J.R.; Gopal, V.R.; Inscho, E.W.; Imig, J.D. P2x receptor-stimulated calcium responses in preglomerular vascular smooth muscle cells involves 20-hydroxyeicosatetraenoic acid. *J. Pharmacol. Exp. Ther.* **2004**, *311*, 1211–1217. [[CrossRef](#)] [[PubMed](#)]
74. Ma, Y.H.; Gebremedhin, D.; Schwartzman, M.L.; Falck, J.R.; Clark, J.E.; Masters, B.S.; Harder, D.R.; Roman, R.J. 20-hydroxyeicosatetraenoic acid is an endogenous vasoconstrictor of canine renal arcuate arteries. *Circ. Res.* **1993**, *72*, 126–136. [[CrossRef](#)] [[PubMed](#)]
75. Arima, S.; Omata, K.; Ito, S.; Tsunoda, K.; Abe, K. 20-HETE requires increased vascular tone to constrict rabbit afferent arterioles. *Hypertension* **1996**, *27*, 781–785. [[CrossRef](#)] [[PubMed](#)]
76. Wu, C.C.; Gupta, T.; Garcia, V.; Ding, Y.; Schwartzman, M.L. 20-HETE and blood pressure regulation: Clinical implications. *Cardiol. Rev.* **2014**, *22*, 1–12. [[CrossRef](#)] [[PubMed](#)]
77. Zou, A.P.; Fleming, J.T.; Falck, J.R.; Jacobs, E.R.; Gebremedhin, D.; Harder, D.R.; Roman, R.J. 20-HETE is an endogenous inhibitor of the large-conductance Ca<sup>2+</sup>-activated K<sup>+</sup> channel in renal arterioles. *Am. J. Physiol.* **1996**, *270*, 228–237.
78. Harder, D.R.; Lange, A.R.; Gebremedhin, D.; Birks, E.K.; Roman, R.J. Cytochrome P450 metabolites of arachidonic acid as intracellular signaling molecules in vascular tissue. *J. Vasc. Res.* **1997**, *34*, 237–243. [[CrossRef](#)] [[PubMed](#)]

79. Roman, R.J.; Harder, D.R. Cellular and ionic signal transduction mechanisms for the mechanical activation of renal arterial vascular smooth muscle. *J. Am. Soc. Nephrol.* **1993**, *4*, 986–996. [[PubMed](#)]
80. Imig, J.D.; Zou, A.P.; Stec, D.E.; Harder, D.R.; Falck, J.R.; Roman, R.J. Formation and actions of 20-hydroxyeicosatetraenoic acid in rat renal arterioles. *Am. J. Physiol.* **1996**, *270*, 217–227.
81. Sun, C.W.; Falck, J.R.; Harder, D.R.; Roman, R.J. Role of tyrosine kinase and PKC in the vasoconstrictor response to 20-HETE in renal arterioles. *Hypertension* **1999**, *33*, 414–418. [[CrossRef](#)] [[PubMed](#)]
82. Sun, C.W.; Alonso-Galicia, M.; Taheri, M.R.; Falck, J.R.; Harder, D.R.; Roman, R.J. Nitric oxide-20-hydroxyeicosatetraenoic acid interaction in the regulation of K<sup>+</sup> channel activity and vascular tone in renal arterioles. *Circ. Res.* **1998**, *83*, 1069–1079. [[CrossRef](#)] [[PubMed](#)]
83. Kuczeriszka, M.; Badzyska, B.; Kompanowska-Jezierska, E. Cytochrome P-450 monooxygenases in control of renal haemodynamics and arterial pressure in anaesthetized rats. *J. Physiol. Pharmacol.* **2006**, *57* (Suppl. 11), 179–185. [[PubMed](#)]
84. Oyekan, A.O. Differential effects of 20-hydroxyeicosatetraenoic acid on intrarenal blood flow in the rat. *J. Pharmacol. Exp. Ther.* **2005**, *313*, 1289–1295. [[CrossRef](#)] [[PubMed](#)]
85. Hercule, H.C.; Oyekan, A.O. Role of no and cytochrome P-450-derived eicosanoids in et-1-induced changes in intrarenal hemodynamics in rats. *Am. J. Physiol. Regul. Integr. Comp. Physiol.* **2000**, *279*, 2132–2141.
86. Hercule, H.C.; Oyekan, A.O. Cytochrome P450  $\omega/\omega-1$  hydroxylase-derived eicosanoids contribute to endothelin(a) and endothelin(b) receptor-mediated vasoconstriction to endothelin-1 in the rat preglomerular arteriole. *J. Pharmacol. Exp. Ther.* **2000**, *292*, 1153–1160. [[PubMed](#)]
87. Oyekan, A.O.; McAward, K.; McGiff, J.C. Renal functional effects of endothelins: Dependency on cytochrome P450-derived arachidonate metabolites. *Biol. Res.* **1998**, *31*, 209–215. [[PubMed](#)]
88. Lai, G.; Liu, X.; Wu, J.; Liu, H.; Zhao, Y. Evaluation of CMV and KAP promoters for driving the expression of human CYP4F2 in transgenic mice. *Int. J. Mol. Med.* **2012**, *29*, 107–112. [[PubMed](#)]
89. Zhang, B.; Lai, G.; Liu, X.; Zhao, Y. Alteration of epoxyeicosatrienoic acids in the liver and kidney of cytochrome P450 4f2 transgenic mice. *Mol. Med. Rep.* **2016**, *14*, 5739–5745. [[CrossRef](#)] [[PubMed](#)]
90. Roman, R.J. P-450 metabolites of arachidonic acid in the control of cardiovascular function. *Physiol. Rev.* **2002**, *82*, 131–185. [[CrossRef](#)] [[PubMed](#)]
91. Li, D.; Belusa, R.; Nowicki, S.; Aperia, A. Arachidonic acid metabolic pathways regulating activity of renal Na<sup>+</sup>-K<sup>+</sup>-atpase are age dependent. *Am. J. Physiol. Renal Physiol.* **2000**, *278*, 823–829.
92. Nowicki, S.; Chen, S.L.; Aizman, O.; Cheng, X.J.; Li, D.; Nowicki, C.; Nairn, A.; Greengard, P.; Aperia, A. 20-hydroxyeicosa-tetraenoic acid (20 HETE) activates protein kinase c: Role in regulation of rat renal Na<sup>+</sup>-K<sup>+</sup>-atpase. *J. Clin. Invest.* **1997**, *99*, 1224–1230. [[CrossRef](#)] [[PubMed](#)]
93. Sacerdoti, D.; Gatta, A.; McGiff, J.C. Role of cytochrome P450-dependent arachidonic acid metabolites in liver physiology and pathophysiology. *Prostaglandins Other Lipid Mediat.* **2003**, *72*, 51–71. [[CrossRef](#)]
94. Cloutier, M.; Campbell, S.; Basora, N.; Proteau, S.; Payet, M.D.; Rousseau, E. 20-HETE inotropic effects involve the activation of a nonselective cationic current in airway smooth muscle. *Am. J. Physiol. Lung Cell. Mol. Physiol.* **2003**, *285*, 560–568. [[CrossRef](#)] [[PubMed](#)]
95. Fan, F.; Muroya, Y.; Roman, R.J. Cytochrome P450 eicosanoids in hypertension and renal disease. *Curr. Opin. Nephrol. Hypertens.* **2015**, *24*, 37–46. [[CrossRef](#)] [[PubMed](#)]
96. Quigley, R.; Chakravarty, S.; Zhao, X.; Imig, J.D.; Capdevila, J.H. Increased renal proximal convoluted tubule transport contributes to hypertension in CYP4A14 knockout mice. *Nephron Physiol.* **2009**, *113*, 23–28. [[CrossRef](#)] [[PubMed](#)]
97. Wu, C.C.; Schwartzman, M.L. The role of 20-HETE in androgen-mediated hypertension. *Prostaglandins Other Lipid Mediat.* **2011**, *96*, 45–53. [[CrossRef](#)] [[PubMed](#)]
98. Holla, V.R.; Adas, F.; Imig, J.D.; Zhao, X.; Price, E., Jr.; Olsen, N.; Kovacs, W.J.; Magnuson, M.A.; Keeney, D.S.; Breyer, M.D. Alterations in the regulation of androgen-sensitive Cyp 4a monooxygenases cause hypertension. *Proc. Natl. Acad. Sci. USA* **2001**, *98*, 5211–5216. [[CrossRef](#)] [[PubMed](#)]
99. Beltowski, J.; Marciniak, A.; Wojcicka, G.; Gorny, D. The opposite effects of cyclic amp-protein kinase a signal transduction pathway on renal cortical and medullary Na<sup>+</sup>,K<sup>+</sup>-atpase activity. *J. Physiol. Pharmacol.* **2002**, *53*, 211–231. [[PubMed](#)]
100. Derrickson, B.H.; Mandel, L.J. Parathyroid hormone inhibits Na<sup>+</sup>-K<sup>+</sup>-atpase through Gq/G11 and the calcium-independent phospholipase A2. *Am. J. Physiol.* **1997**, *272*, F781–F788. [[PubMed](#)]

101. Kirchheimer, C.; Mendez, C.F.; Acquier, A.; Nowicki, S. Role of 20-HETE in D1/D2 dopamine receptor synergism resulting in the inhibition of Na<sup>+</sup>-K<sup>+</sup>-ATPase activity in the proximal tubule. *Am. J. Physiol. Renal Physiol.* **2007**, *292*, 1435–1442. [[CrossRef](#)] [[PubMed](#)]
102. Ominato, M.; Satoh, T.; Katz, A.I. Regulation of Na<sup>+</sup>-K<sup>+</sup>-atpase activity in the proximal tubule: Role of the protein kinase c pathway and of eicosanoids. *J. Membr. Biol.* **1996**, *152*, 235–243. [[CrossRef](#)] [[PubMed](#)]
103. Silverstein, D.M.; Barac-Nieto, M.; Falck, J.R.; Spitzer, A. 20-HETE mediates the effect of parathyroid hormone and protein kinase c on renal phosphate transport. *Prostaglandins Leukot. Essent. Fatty Acids* **1998**, *58*, 209–213. [[CrossRef](#)]
104. Silverstein, D.M.; Barac-Nieto, M.; Spitzer, A. Multiple arachidonic acid metabolites inhibit sodium-dependent phosphate transport in ok cells. *Prostaglandins Leukot. Essent. Fatty Acids* **1999**, *61*, 165–169. [[CrossRef](#)] [[PubMed](#)]
105. Silverstein, D.M.; Spitzer, A.; Barac-Nieto, M. Hormonal regulation of sodium-dependent phosphate transport in opossum kidney cells. *Horm. Res.* **2000**, *54*, 38–43. [[CrossRef](#)] [[PubMed](#)]
106. Silverstein, D.M.; Spitzer, A.; Barac-Nieto, M. Parathormone sensitivity and responses to protein kinases in subclones of opossum kidney cells. *Pediatr. Nephrol.* **2005**, *20*, 721–724. [[CrossRef](#)] [[PubMed](#)]
107. Amlal, H.; Legoff, C.; Vernimmen, C.; Paillard, M.; Bichara, M. Na<sup>+</sup>-K<sup>+</sup>-NH<sup>4+</sup>-2Cl<sup>-</sup> cotransport in medullary thick ascending limb: Control by pKa, pKc, and 20-HETE. *Am. J. Physiol.* **1996**, *271*, 455–463.
108. Grider, J.S.; Falcone, J.C.; Kilpatrick, E.L.; Ott, C.E.; Jackson, B.A. P450 arachidonate metabolites mediate bradykinin-dependent inhibition of NaCl transport in the rat thick ascending limb. *Can. J. Physiol. Pharmacol.* **1997**, *75*, 91–96. [[CrossRef](#)] [[PubMed](#)]
109. Wang, W.; Lu, M. Effect of arachidonic acid on activity of the apical K<sup>+</sup> channel in the thick ascending limb of the rat kidney. *J. Gen. Physiol.* **1995**, *106*, 727–743. [[CrossRef](#)] [[PubMed](#)]
110. Gu, R.M.; Wei, Y.; Jiang, H.L.; Lin, D.H.; Sterling, H.; Bloom, P.; Balazy, M.; Wang, W.H. K depletion enhances the extracellular Ca<sup>2+</sup>-induced inhibition of the apical k channels in the mTAL of rat kidney. *J. Gen. Physiol.* **2002**, *119*, 33–44. [[CrossRef](#)] [[PubMed](#)]
111. Li, D.; Wei, Y.; Wang, W.H. Dietary K intake regulates the response of apical K channels to adenosine in the thick ascending limb. *Am. J. Physiol. Renal Physiol.* **2004**, *287*, 954–959. [[CrossRef](#)] [[PubMed](#)]
112. Ikari, A.; Nakajima, K.; Suketa, Y.; Harada, H.; Takagi, K. Activation of Na<sup>+</sup>-independent Mg<sup>2+</sup> efflux by 20-hydroxyeicosatetraenoic acid in rat renal epithelial cells. *Jpn. J. Physiol.* **2004**, *54*, 415–419. [[CrossRef](#)] [[PubMed](#)]
113. Savas, U.; Wei, S.; Hsu, M.H.; Falck, J.R.; Guengerich, F.P.; Capdevila, J.H.; Johnson, E.F. 20-hydroxyeicosatetraenoic acid (HETE)-dependent hypertension in human cytochrome P450 (CYP) 4A11 transgenic mice: Normalization of blood pressure by sodium restriction, hydrochlorothiazide, or blockade of the type 1 angiotensin ii receptor. *J. Biol. Chem.* **2016**, *291*, 16904–16919. [[CrossRef](#)] [[PubMed](#)]
114. Coca, S.G.; Yusuf, B.; Shlipak, M.G.; Garg, A.X.; Parikh, C.R. Long-term risk of mortality and other adverse outcomes after acute kidney injury: A systematic review and meta-analysis. *Am. J. Kidney Dis.* **2009**, *53*, 961–973. [[CrossRef](#)] [[PubMed](#)]
115. Bonventre, J.V.; Yang, L. Cellular pathophysiology of ischemic acute kidney injury. *J. Clin. Invest.* **2011**, *121*, 4210–4221. [[CrossRef](#)] [[PubMed](#)]
116. Siew, E.D.; Davenport, A. The growth of acute kidney injury: A rising tide or just closer attention to detail? *Kidney Int.* **2015**, *87*, 46–61. [[CrossRef](#)] [[PubMed](#)]
117. Dolegowska, B.; Blogowski, W.; Domanski, L. Is it possible to predict the early post-transplant allograft function using 20-HETE measurements? A preliminary report. *Transpl. Int.* **2009**, *22*, 546–553. [[CrossRef](#)] [[PubMed](#)]
118. Roman, R.J.; Akbulut, T.; Park, F.; Regner, K.R. 20-HETE in acute kidney injury. *Kidney Int.* **2011**, *79*, 10–13. [[CrossRef](#)] [[PubMed](#)]
119. Nilakantan, V.; Maenpaa, C.; Jia, G.; Roman, R.J.; Park, F. 20-HETE-mediated cytotoxicity and apoptosis in ischemic kidney epithelial cells. *Am. J. Physiol. Renal Physiol.* **2008**, *294*, 562–570. [[CrossRef](#)] [[PubMed](#)]
120. Hoff, U.; Lukitsch, I.; Chaykovska, L.; Ladwig, M.; Arnold, C.; Manthati, V.L.; Fuller, T.F.; Schneider, W.; Gollasch, M.; Muller, D.N. Inhibition of 20-HETE synthesis and action protects the kidney from ischemia/reperfusion injury. *Kidney Int.* **2011**, *79*, 57–65. [[CrossRef](#)] [[PubMed](#)]
121. Regner, K.R.; Roman, R.J. Role of medullary blood flow in the pathogenesis of renal ischemia-reperfusion injury. *Curr. Opin. Nephrol. Hypertens.* **2012**, *21*, 33–38. [[CrossRef](#)] [[PubMed](#)]

122. Park, F.; Sweeney, W.E.; Jia, G.; Roman, R.J.; Avner, E.D. 20-HETE mediates proliferation of renal epithelial cells in polycystic kidney disease. *J. Am. Soc. Nephrol.* **2008**, *19*, 1929–1939. [[CrossRef](#)] [[PubMed](#)]
123. Park, F.; Sweeney, W.E., Jr.; Jia, G.; Akbulut, T.; Mueller, B.; Falck, J.R.; Birudaraju, S.; Roman, R.J.; Avner, E.D. Chronic blockade of 20-HETE synthesis reduces polycystic kidney disease in an orthologous rat model of arpkd. *Am. J. Physiol. Renal Physiol.* **2009**, *296*, 575–582. [[CrossRef](#)] [[PubMed](#)]
124. Klawitter, J.; Klawitter, J.; McFann, K.; Pennington, A.T.; Abebe, K.Z.; Brosnahan, G.; Cadnapaphornchai, M.A.; Chonchol, M.; Gitomer, B.; Christians, U.; et al. Bioactive lipid mediators in polycystic kidney disease. *J. Lipid Res.* **2014**, *55*, 1139–1149. [[CrossRef](#)] [[PubMed](#)]
125. Tian, T.; Li, J.; Wang, M.Y.; Xie, X.F.; Li, Q.X. Protective effect of 20-hydroxyeicosatetraenoic acid (20-HETE) on adriamycin-induced toxicity of human renal tubular epithelial cell (HK-2). *Eur. J. Pharmacol.* **2012**, *683*, 246–251. [[CrossRef](#)] [[PubMed](#)]
126. Blanton, A.; Nsaif, R.; Hercule, H.; Oyekan, A. Nitric oxide/cytochrome P450 interactions in cyclosporin a-induced effects in the rat. *J. Hypertens.* **2006**, *24*, 1865–1872. [[CrossRef](#)] [[PubMed](#)]
127. Seki, T.; Ishimoto, T.; Sakurai, T.; Yasuda, Y.; Taniguchi, K.; Doi, M.; Sato, M.; Roman, R.J.; Miyata, N. Increased excretion of urinary 20-HETE in rats with cyclosporine-induced nephrotoxicity. *J. Pharmacol. Sci.* **2005**, *97*, 132–137. [[CrossRef](#)] [[PubMed](#)]
128. Vickers, A.E.; Alegret, M.; Meyer, E.; Smiley, S.; Guertler, J. Hydroxyethyl cyclosporin a induces and decreases P450<sub>3a</sub> and p-glycoprotein levels in rat liver. *Xenobiotica* **1996**, *26*, 27–39. [[CrossRef](#)] [[PubMed](#)]
129. Wang, M.H.; Zand, B.A.; Nasjletti, A.; Laniado-Schwartzman, M. Renal 20-hydroxyeicosatetraenoic acid synthesis during pregnancy. *Am. J. Physiol. Regul. Integr. Comp. Physiol.* **2002**, *282*, 383–389.
130. Wang, M.H.; Wang, J.; Chang, H.H.; Zand, B.A.; Jiang, M.; Nasjletti, A.; Laniado-Schwartzman, M. Regulation of renal CYP4A expression and 20-HETE synthesis by nitric oxide in pregnant rats. *Am. J. Physiol. Renal Physiol.* **2003**, *285*, 295–302. [[CrossRef](#)] [[PubMed](#)]
131. Huang, H.; Zhou, Y.; Raju, V.T.; Du, J.; Chang, H.H.; Wang, C.Y.; Brands, M.W.; Falck, J.R.; Wang, M.H. Renal 20-HETE inhibition attenuates changes in renal hemodynamics induced by L-name treatment in pregnant rats. *Am. J. Physiol. Renal Physiol.* **2005**, *289*, 1116–1122. [[CrossRef](#)] [[PubMed](#)]
132. Llinas, M.T.; Alexander, B.T.; Capparelli, M.F.; Carroll, M.A.; Granger, J.P. Cytochrome P-450 inhibition attenuates hypertension induced by reductions in uterine perfusion pressure in pregnant rats. *Hypertension* **2004**, *43*, 623–628. [[CrossRef](#)] [[PubMed](#)]
133. Rifkind, A.B.; Lee, C.; Chang, T.K.; Waxman, D.J. Arachidonic acid metabolism by human cytochrome P450s 2c8, 2c9, 2e1, and 1a2: Regioselective oxygenation and evidence for a role for CYP2C enzymes in arachidonic acid epoxyoxygenation in human liver microsomes. *Arch. Biochem. Biophys.* **1995**, *320*, 380–389. [[CrossRef](#)]
134. Powell, P.K.; Wolf, I.; Jin, R.; Lasker, J.M. Metabolism of arachidonic acid to 20-hydroxy-5,8,11,14-eicosatetraenoic acid by P450 enzymes in human liver: Involvement of cyp4f2 and CYP4A11. *J. Pharmacol. Exp. Ther.* **1998**, *285*, 1327–1336. [[PubMed](#)]
135. Antoun, J.; Goullitquer, S.; Amet, Y.; Dreano, Y.; Salaun, J.P.; Corcos, L.; Plee-Gautier, E. CYP4F3B is induced by PGA1 in human liver cells: A regulation of the 20-HETE synthesis. *J. Lipid Res.* **2008**, *49*, 2135–2141. [[CrossRef](#)] [[PubMed](#)]
136. Plee-Gautier, E.; Antoun, J.; Goullitquer, S.; Le Jossic-Corcos, C.; Simon, B.; Amet, Y.; Salaun, J.P.; Corcos, L. Statins increase cytochrome P450 4F3-mediated eicosanoids production in human liver cells: A PXR dependent mechanism. *Biochem. Pharmacol.* **2012**, *84*, 571–579. [[CrossRef](#)] [[PubMed](#)]
137. Poloyac, S.M.; Tortorici, M.A.; Przychodzin, D.I.; Reynolds, R.B.; Xie, W.; Frye, R.F.; Zemaitis, M.A. The effect of isoniazid on CYP2E1- and CYP4A-mediated hydroxylation of arachidonic acid in the rat liver and kidney. *Drug Metab. Dispos.* **2004**, *32*, 727–733. [[CrossRef](#)] [[PubMed](#)]
138. Sacerdoti, D.; Jiang, H.; Gaiani, S.; McGiff, J.C.; Gatta, A.; Bolognesi, M. 11,12-EET increases porto-sinusoidal resistance and may play a role in endothelial dysfunction of portal hypertension. *Prostaglandins Other Lipid Mediat.* **2011**, *96*, 72–75. [[CrossRef](#)] [[PubMed](#)]
139. Sacerdoti, D.; Balazy, M.; Angeli, P.; Gatta, A.; McGiff, J.C. Eicosanoid excretion in hepatic cirrhosis: Predominance of 20-HETE. *J. Clin. Invest.* **1997**, *100*, 1264–1270. [[CrossRef](#)] [[PubMed](#)]
140. Imig, J.D.; Hammock, B.D. Soluble epoxide hydrolase as a therapeutic target for cardiovascular diseases. *Nat. Rev. Drug Discov.* **2009**, *8*, 794–805. [[CrossRef](#)] [[PubMed](#)]
141. Zhu, D.; Zhang, C.; Medhora, M.; Jacobs, E.R. CYP4A mRNA, protein, and product in rat lungs: Novel localization in vascular endothelium. *J. Appl. Physiol.* **2002**, *93*, 330–337. [[CrossRef](#)] [[PubMed](#)]

142. Lakhkar, A.; Dhagia, V.; Joshi, S.R.; Gotlinger, K.; Patel, D.; Sun, D.; Wolin, M.S.; Schwartzman, M.L.; Gupte, S.A. 20-HETE-induced mitochondrial superoxide production and inflammatory phenotype in vascular smooth muscle is prevented by glucose-6-phosphate dehydrogenase inhibition. *Am. J. Physiol. Heart Circ. Physiol.* **2016**, *310*, 1107–1117. [[CrossRef](#)] [[PubMed](#)]
143. Zhu, D.; Effros, R.M.; Harder, D.R.; Roman, R.J.; Jacobs, E.R. Tissue sources of cytochrome P450 4a and 20-HETE synthesis in rabbit lungs. *Am. J. Respir. Cell Mol. Biol.* **1998**, *19*, 121–128. [[CrossRef](#)] [[PubMed](#)]
144. Yaghi, A.; Bradbury, J.A.; Zeldin, D.C.; Mehta, S.; Bend, J.R.; McCormack, D.G. Pulmonary cytochrome P-450 2j4 is reduced in a rat model of acute pseudomonas pneumonia. *Am. J. Physiol. Lung Cell. Mol. Physiol.* **2003**, *285*, 1099–1105. [[CrossRef](#)] [[PubMed](#)]
145. Yang, J.; Eiserich, J.P.; Cross, C.E.; Morrissey, B.M.; Hammock, B.D. Metabolomic profiling of regulatory lipid mediators in sputum from adult cystic fibrosis patients. *Free Radic. Biol. Med.* **2012**, *53*, 160–171. [[CrossRef](#)] [[PubMed](#)]
146. Jacobs, E.R.; Bodiga, S.; Ali, I.; Falck, A.M.; Falck, J.R.; Medhora, M.; Dhanasekaran, A. Tissue protection and endothelial cell signaling by 20-HETE analogs in intact ex vivo lung slices. *Exp. Cell Res.* **2012**, *16*, 2143–2152. [[CrossRef](#)] [[PubMed](#)]
147. Zhu, D.; Birks, E.K.; Dawson, C.A.; Patel, M.; Falck, J.R.; Presberg, K.; Roman, R.J.; Jacobs, E.R. Hypoxic pulmonary vasoconstriction is modified by P-450 metabolites. *Am. J. Physiol. Heart Circ. Physiol.* **2000**, *279*, 1526–1533.
148. Dhanasekaran, A.; Bodiga, S.; Gruenloh, S.; Gao, Y.; Dunn, L.; Falck, J.R.; Buonaccorsi, J.N.; Medhora, M.; Jacobs, E.R. 20-HETE increases survival and decreases apoptosis in pulmonary arteries and pulmonary artery endothelial cells. *Am. J. Physiol. Heart Circ. Physiol.* **2009**, *296*, 777–786. [[CrossRef](#)] [[PubMed](#)]
149. Wang, Z.; Tang, X.; Li, Y.; Leu, C.; Guo, L.; Zheng, X.; Zhu, D. 20-Hydroxyeicosatetraenoic acid inhibits the apoptotic responses in pulmonary artery smooth muscle cells. *Eur. J. Pharmacol.* **2008**, *588*, 9–17. [[CrossRef](#)] [[PubMed](#)]
150. Medhora, M.; Chen, Y.; Gruenloh, S.; Harland, D.; Bodiga, S.; Zielonka, J.; Gebremedhin, D.; Gao, Y.; Falck, J.R.; Anjaiah, S.; et al. 20-HETE increases superoxide production and activates NADPH oxidase in pulmonary artery endothelial cells. *Am. J. Physiol. Lung Cell. Mol. Physiol.* **2008**, *294*, 902–911. [[CrossRef](#)] [[PubMed](#)]
151. Bodiga, S.; Gruenloh, S.K.; Gao, Y.; Manthathi, V.L.; Dubasi, N.; Falck, J.R.; Medhora, M.; Jacobs, E.R. 20-HETE-induced nitric oxide production in pulmonary artery endothelial cells is mediated by NADPH oxidase, H<sub>2</sub>O<sub>2</sub>, and PI3-kinase/Akt. *Am. J. Physiol. Lung Cell. Mol. Physiol.* **2010**, *298*, 564–574. [[CrossRef](#)] [[PubMed](#)]
152. Yu, M.; McAndrew, R.P.; Al-Saghir, R.; Maier, K.G.; Medhora, M.; Roman, R.J.; Jacobs, E.R. Nitric oxide contributes to 20-HETE-induced relaxation of pulmonary arteries. *J. Appl. Physiol.* **2002**, *93*, 1391–1399. [[CrossRef](#)] [[PubMed](#)]
153. Fuloria, M.; Eckman, D.M.; Leach, D.A.; Aschner, J.L. 20-hydroxyeicosatetraenoic acid is a vasoconstrictor in the newborn piglet pulmonary microcirculation. *Am. J. Physiol. Lung Cell. Mol. Physiol.* **2004**, *287*, 360–365. [[CrossRef](#)] [[PubMed](#)]
154. Morin, C.; Guibert, C.; Sirois, M.; Echave, V.; Gomes, M.M.; Rousseau, E. Effects of ω-hydroxylase product on distal human pulmonary arteries. *Am. J. Physiol. Heart Circ. Physiol.* **2008**, *294*, 1435–1443. [[CrossRef](#)] [[PubMed](#)]
155. Birks, E.K.; Bousamra, M.; Presberg, K.; Marsh, J.A.; Effros, R.M.; Jacobs, E.R. Human pulmonary arteries dilate to 20-HETE, an endogenous eicosanoid of lung tissue. *Am. J. Physiol.* **1997**, *272*, 823–829.
156. Yaghi, A.; Webb, C.D.; Scott, J.A.; Mehta, S.; Bend, J.R.; McCormack, D.G. Cytochrome P450 metabolites of arachidonic acid but not cyclooxygenase-2 metabolites contribute to the pulmonary vascular hyporeactivity in rats with acute pseudomonas pneumonia. *J. Pharmacol. Exp. Ther.* **2001**, *297*, 479–488. [[PubMed](#)]
157. Jacobs, E.R.; Zhu, D.; Gruenloh, S.; Lopez, B.; Medhora, M. VEGF-induced relaxation of pulmonary arteries is mediated by endothelial cytochrome P-450 hydroxylase. *Am. J. Physiol. Lung Cell. Mol. Physiol.* **2006**, *291*, 369–377. [[CrossRef](#)] [[PubMed](#)]
158. Chen, Y.; Medhora, M.; Falck, J.R.; Pritchard, K.A., Jr.; Jacobs, E.R. Mechanisms of activation of eNOS by 20-HETE and VEGF in bovine pulmonary artery endothelial cells. *Am. J. Physiol. Lung Cell. Mol. Physiol.* **2006**, *291*, 378–385. [[CrossRef](#)] [[PubMed](#)]



159. Kizub, I.V.; Lakhkar, A.; Dhagia, V.; Joshi, S.R.; Jiang, H.; Wolin, M.S.; Falck, J.R.; Koduru, S.R.; Errabelli, R.; Jacobs, E.R. Involvement of gap junctions between smooth muscle cells in sustained hypoxic pulmonary vasoconstriction development: A potential role for 15-HETE and 20-HETE. *Am. J. Physiol. Lung Cell. Mol. Physiol.* **2016**, *310*, 772–783. [[CrossRef](#)] [[PubMed](#)]
160. Singh, T.U.; Choudhury, S.; Parida, S.; Maruti, B.S.; Mishra, S.K. Arachidonic acid inhibits Na<sup>+</sup>-K<sup>+</sup>-atpase via cytochrome P-450, lipoxygenase and protein kinase c-dependent pathways in sheep pulmonary artery. *Vascul. Pharmacol.* **2012**, *56*, 84–90. [[CrossRef](#)] [[PubMed](#)]
161. Parker, T.A.; Grover, T.R.; Kinsella, J.P.; Falck, J.R.; Abman, S.H. Inhibition of 20-HETE abolishes the myogenic response during NOS antagonism in the ovine fetal pulmonary circulation. *Am. J. Physiol. Lung Cell. Mol. Physiol.* **2005**, *289*, 261–267. [[CrossRef](#)] [[PubMed](#)]
162. Rousseau, E.; Cloutier, M.; Morin, C.; Proteau, S. Capsazepine, a vanilloid antagonist, abolishes tonic responses induced by 20-HETE on guinea pig airway smooth muscle. *Am. J. Physiol. Lung Cell. Mol. Physiol.* **2005**, *288*, 460–470. [[CrossRef](#)] [[PubMed](#)]
163. Morin, C.; Sirois, M.; Echave, V.; Gomes, M.M.; Rousseau, E. Functional effects of 20-HETE on human bronchi: Hyperpolarization and relaxation due to BKCa channel activation. *Am. J. Physiol. Lung Cell. Mol. Physiol.* **2007**, *293*, 1037–1044. [[CrossRef](#)] [[PubMed](#)]
164. Jacobs, E.R.; Effros, R.M.; Falck, J.R.; Reddy, K.M.; Campbell, W.B.; Zhu, D. Airway synthesis of 20-hydroxyeicosatetraenoic acid: Metabolism by cyclooxygenase to a bronchodilator. *Am. J. Physiol.* **1999**, *276*, 280–288.
165. Cooper, P.R.; Mesaros, A.C.; Zhang, J.; Christmas, P.; Stark, C.M.; Douaidy, K.; Mittelman, M.A.; Soberman, R.J.; Blair, I.A.; Panettieri, R.A. 20-HETE mediates ozone-induced, neutrophil-independent airway hyper-responsiveness in mice. *PLoS ONE* **2010**, *5*, 10235. [[CrossRef](#)] [[PubMed](#)]
166. Kokalari, B.; Koziol-White, C.; Jester, W.; Panettieri, R.A.; Haczku, A.; Jiang, Z. 20-hydroxyeicosatetraenoic acid (20-HETE) induces airway inflammation and hyperresponsiveness in mice. In Proceedings of C101. Allergic airway inflammation and hyperresponsiveness: Novel mechanisms and therapy, Washington, DC, USA, 19–24 May 2015; Am Thoracic Soc: New York, NY, USA, 2015; p. 5165.
167. Chuang, S.S.; Helvig, C.; Taimi, M.; Ramshaw, H.A.; Collop, A.H.; Amad, M.; White, J.A.; Petkovich, M.; Jones, G.; Korczak, B. Cyp2u1, a novel human thymus- and brain-specific cytochrome P450, catalyzes ω- and (ω -1)-hydroxylation of fatty acids. *J. Biol. Chem.* **2004**, *279*, 6305–6314. [[CrossRef](#)] [[PubMed](#)]
168. Gebremedhin, D.; Zhang, D.X.; Carver, K.A.; Rau, N.; Rarick, K.R.; Roman, R.J.; Harder, D.R. Expression of CYP 4A omega-hydroxylase and formation of 20-hydroxyeicosatetraenoic acid (20-HETE) in cultured rat brain astrocytes. *Prostaglandins Other Lipid Mediat.* **2016**, *124*, 16–26. [[CrossRef](#)] [[PubMed](#)]
169. Collins, X.H.; Harmon, S.D.; Kaduce, T.L.; Berst, K.B.; Fang, X.; Moore, S.A.; Raju, T.V.; Falck, J.R.; Weintraub, N.L.; Duester, G.; et al. Omega-oxidation of 20-hydroxyeicosatetraenoic acid (20-HETE) in cerebral microvascular smooth muscle and endothelium by alcohol dehydrogenase 4. *J. Biol. Chem.* **2005**, *280*, 33157–33164. [[CrossRef](#)] [[PubMed](#)]
170. Qi, L.; Meng, L.; Li, Y.; Qu, Y. Arterial carbon dioxide partial pressure influences CYP4A distribution in the rat brain. *Histol. Histopathol.* **2012**, *27*, 897–903. [[PubMed](#)]
171. Liu, X.; Li, C.; Falck, J.R.; Roman, R.J.; Harder, D.R.; Koehler, R.C. Interaction of nitric oxide, 20-HETE, and eets during functional hyperemia in whisker barrel cortex. *Am. J. Physiol. Heart Circ. Physiol.* **2008**, *295*, 619–631. [[CrossRef](#)] [[PubMed](#)]
172. Pratt, P.F.; Medhora, M.; Harder, D.R. Mechanisms regulating cerebral blood flow as therapeutic targets. *Curr. Opin. Investig. Drugs* **2004**, *5*, 952–956. [[PubMed](#)]
173. Gordon, G.R.; Mulligan, S.J.; MacVicar, B.A. Astrocyte control of the cerebrovasculature. *Glia* **2007**, *55*, 1214–1221. [[CrossRef](#)] [[PubMed](#)]
174. Imig, J.D.; Simpkins, A.N.; Renic, M.; Harder, D.R. Cytochrome P450 eicosanoids and cerebral vascular function. *Expert Rev. Mol. Med.* **2011**, *13*, 7. [[CrossRef](#)] [[PubMed](#)]
175. Gebremedhin, D.; Lange, A.R.; Lowry, T.F.; Taheri, M.R.; Birks, E.K.; Hudetz, A.G.; Narayanan, J.; Falck, J.R.; Okamoto, H.; Roman, R.J. Production of 20-HETE and its role in autoregulation of cerebral blood flow. *Circ. Res.* **2000**, *87*, 60–65. [[CrossRef](#)] [[PubMed](#)]
176. Fu, Z.; Nakayama, T.; Sato, N.; Izumi, Y.; Kasamaki, Y.; Shindo, A.; Ohta, M.; Soma, M.; Aoi, N.; Sato, M.; et al. A haplotype of the CYP4F2 gene is associated with cerebral infarction in Japanese men. *Am. J. Hypertens.* **2008**, *21*, 1216–1223. [[CrossRef](#)] [[PubMed](#)]

177. Berg, R.M. Myogenic and metabolic feedback in cerebral autoregulation: Putative involvement of arachidonic acid-dependent pathways. *Med. Hypotheses* **2016**, *92*, 12–17. [[CrossRef](#)] [[PubMed](#)]
178. Metea, M.R.; Newman, E.A. Signalling within the neurovascular unit in the mammalian retina. *Exp. Physiol.* **2007**, *92*, 635–640. [[CrossRef](#)] [[PubMed](#)]
179. Metea, M.R.; Newman, E.A. Glial cells dilate and constrict blood vessels: A mechanism of neurovascular coupling. *J. Neurosci.* **2006**, *26*, 2862–2870. [[CrossRef](#)] [[PubMed](#)]
180. Liu, X.; Li, C.; Gebremedhin, D.; Hwang, S.H.; Hammock, B.D.; Falck, J.R.; Roman, R.J.; Harder, D.R.; Koehler, R.C. Epoxyeicosatrienoic acid-dependent cerebral vasodilation evoked by metabotropic glutamate receptor activation in vivo. *Am. J. Physiol. Heart Circ. Physiol.* **2011**, *301*, 373–381. [[CrossRef](#)] [[PubMed](#)]
181. Lange, A.; Gebremedhin, D.; Narayanan, J.; Harder, D. 20-Hydroxyeicosatetraenoic acid-induced vasoconstriction and inhibition of potassium current in cerebral vascular smooth muscle is dependent on activation of protein kinase c. *J. Biol. Chem.* **1997**, *272*, 27345–27352. [[CrossRef](#)] [[PubMed](#)]
182. Ohata, H.; Gebremedhin, D.; Narayanan, J.; Harder, D.R.; Koehler, R.C. Onset of pulmonary ventilation in fetal sheep produces pial arteriolar constriction dependent on cytochrome P450 omega-hydroxylase activity. *J. Appl. Physiol.* **2010**, *109*, 412–417. [[CrossRef](#)] [[PubMed](#)]
183. Mapelli, L.; Gagliano, G.; Soda, T.; Laforenza, U.; Moccia, F.; D'Angelo, E.U. Granular layer neurons control cerebellar neurovascular coupling through an NMDA receptor/no-dependent system. *J. Neurosci.* **2017**, *37*, 1340–1351. [[CrossRef](#)] [[PubMed](#)]
184. Hama-Tomioka, K.; Kinoshita, H.; Azma, T.; Nakahata, K.; Matsuda, N.; Hatakeyama, N.; Kikuchi, H.; Hatano, Y. The role of 20-hydroxyeicosatetraenoic acid in cerebral arteriolar constriction and the inhibitory effect of propofol. *Anesth. Analg.* **2009**, *109*, 1935–1942. [[CrossRef](#)] [[PubMed](#)]
185. Renic, M.; Kumar, S.N.; Gebremedhin, D.; Florence, M.A.; Gerges, N.Z.; Falck, J.R.; Harder, D.R.; Roman, R.J. Protective effect of 20-HETE inhibition in a model of oxygen-glucose deprivation in hippocampal slice cultures. *Am. J. Physiol. Heart Circ. Physiol.* **2012**, *302*, 1285–1293. [[CrossRef](#)] [[PubMed](#)]
186. Hall, C.N.; Reynell, C.; Gesslein, B.; Hamilton, N.B.; Mishra, A.; Sutherland, B.A.; O'Farrell, F.M.; Buchan, A.M.; Lauritzen, M.; Attwell, D. Capillary pericytes regulate cerebral blood flow in health and disease. *Nature* **2014**, *508*, 55–60. [[CrossRef](#)] [[PubMed](#)]
187. Fang, X.; Faraci, F.M.; Kaduce, T.L.; Harmon, S.; Modrick, M.L.; Hu, S.; Moore, S.A.; Falck, J.R.; Weintraub, N.L.; Spector, A.A. 20-Hydroxyeicosatetraenoic acid is a potent dilator of mouse basilar artery: Role of cyclooxygenase. *Am. J. Physiol. Heart Circ. Physiol.* **2006**, *291*, 2301–2307. [[CrossRef](#)] [[PubMed](#)]
188. Marumo, T.; Eto, K.; Wake, H.; Omura, T.; Nabekura, J. The inhibitor of 20-HETE synthesis, ts-011, improves cerebral microcirculatory autoregulation impaired by middle cerebral artery occlusion in mice. *Br. J. Pharmacol.* **2010**, *161*, 1391–1402. [[CrossRef](#)] [[PubMed](#)]
189. Poloyac, S.M.; Reynolds, R.B.; Yonas, H.; Kerr, M.E. Identification and quantification of the hydroxyeicosatetraenoic acids, 20-HETE and 12-HETE, in the cerebrospinal fluid after subarachnoid hemorrhage. *J. Neurosci. Methods* **2005**, *144*, 257–263. [[CrossRef](#)] [[PubMed](#)]
190. Kawasaki, T.; Marumo, T.; Shirakami, K.; Mori, T.; Doi, H.; Suzuki, M.; Watanabe, Y.; Chaki, S.; Nakazato, A.; Ago, Y. Increase of 20-HETE synthase after brain ischemia in rats revealed by pet study with (11)c-labeled 20-HETE synthase-specific inhibitor. *J. Cereb. Blood Flow Metab.* **2012**, *9*, 1737–1746. [[CrossRef](#)] [[PubMed](#)]
191. Poloyac, S.M.; Zhang, Y.; Bies, R.R.; Kochanek, P.M.; Graham, S.H. Protective effect of the 20-HETE inhibitor het0016 on brain damage after temporary focal ischemia. *J. Cereb. Blood Flow Metab.* **2006**, *26*, 1551–1561. [[CrossRef](#)] [[PubMed](#)]
192. Tanaka, Y.; Omura, T.; Fukasawa, M.; Horiuchi, N.; Miyata, N.; Minagawa, T.; Yoshida, S.; Nakaike, S. Continuous inhibition of 20-HETE synthesis by ts-011 improves neurological and functional outcomes after transient focal cerebral ischemia in rats. *Neurosci. Res.* **2007**, *59*, 475–480. [[CrossRef](#)] [[PubMed](#)]
193. Yang, Z.J.; Carter, E.L.; Kibler, K.K.; Kwansa, H.; Crafa, D.A.; Martin, L.J.; Roman, R.J.; Harder, D.R.; Koehler, R.C. Attenuation of neonatal ischemic brain damage using a 20-HETE synthesis inhibitor. *J. Neurochem.* **2012**, *121*, 168–179. [[CrossRef](#)] [[PubMed](#)]
194. Cambj-Sapunar, L.; Yu, M.; Harder, D.R.; Roman, R.J. Contribution of 5-hydroxytryptamine1b receptors and 20-hydroxyeicosatetraenoic acid to fall in cerebral blood flow after subarachnoid hemorrhage. *Stroke* **2003**, *34*, 1269–1275. [[CrossRef](#)] [[PubMed](#)]

195. Takeuchi, K.; Miyata, N.; Renic, M.; Harder, D.R.; Roman, R.J. Hemoglobin, no, and 20-HETE interactions in mediating cerebral vasoconstriction following sah. *Am. J. Physiol. Regul. Integr. Comp. Physiol.* **2006**, *290*, 84–89. [[CrossRef](#)] [[PubMed](#)]
196. Crago, E.A.; Thampatty, B.P.; Sherwood, P.R.; Kuo, C.W.; Bender, C.; Balzer, J.; Horowitz, M.; Poloyac, S.M. Cerebrospinal fluid 20-HETE is associated with delayed cerebral ischemia and poor outcomes after aneurysmal subarachnoid hemorrhage. *Stroke* **2011**, *42*, 1872–1877. [[CrossRef](#)] [[PubMed](#)]
197. Deng, S.; Zhu, G.; Liu, F.; Zhang, H.; Qin, X.; Li, L.; Zhiyi, H. CYP4F2 gene V433M polymorphism is associated with ischemic stroke in the male northern chinese han population. *Prog. Neuropsychopharmacol. Biol. Psychiatry* **2010**, *34*, 664–668. [[CrossRef](#)] [[PubMed](#)]
198. Renic, M.; Klaus, J.A.; Omura, T.; Kawashima, N.; Onishi, M.; Miyata, N.; Koehler, R.C.; Harder, D.R.; Roman, R.J. Effect of 20-HETE inhibition on infarct volume and cerebral blood flow after transient middle cerebral artery occlusion. *J. Cereb. Blood Flow Metab.* **2009**, *29*, 629–639. [[CrossRef](#)] [[PubMed](#)]
199. Mu, Y.; Klamerus, M.M.; Miller, T.M.; Rohan, L.C.; Graham, S.H.; Poloyac, S.M. Intravenous formulation of *n*-hydroxy-*n'*-(4-*n*-butyl-2-methylphenyl)formamidine (het0016) for inhibition of rat brain 20-hydroxyeicosatetraenoic acid formation. *Drug Metab. Dispos.* **2008**, *36*, 2324–2330. [[CrossRef](#)] [[PubMed](#)]
200. Liu, Y.; Wang, D.; Wang, H.; Qu, Y.; Xiao, X.; Zhu, Y. The protective effect of HET0016 on brain edema and blood-brain barrier dysfunction after cerebral ischemia/reperfusion. *Brain Res.* **2014**, *1544*, 45–53. [[CrossRef](#)] [[PubMed](#)]
201. Miyata, N.; Seki, T.; Tanaka, Y.; Omura, T.; Taniguchi, K.; Doi, M.; Bandou, K.; Kametani, S.; Sato, M.; Okuyama, S. Beneficial effects of a new 20-hydroxyeicosatetraenoic acid synthesis inhibitor, ts-011 [*n*-(3-chloro-4-morpholin-4-yl) phenyl-*n'*-hydroxyimido formamide], on hemorrhagic and ischemic stroke. *J. Pharmacol. Exp. Ther.* **2005**, *314*, 77–85. [[CrossRef](#)] [[PubMed](#)]
202. Omura, T.; Tanaka, Y.; Miyata, N.; Koizumi, C.; Sakurai, T.; Fukasawa, M.; Hachiuma, K.; Minagawa, T.; Susumu, T.; Yoshida, S.; et al. Effect of a new inhibitor of the synthesis of 20-HETE on cerebral ischemia reperfusion injury. *Stroke* **2006**, *37*, 1307–1313. [[CrossRef](#)] [[PubMed](#)]
203. Goodman, A.I.; Choudhury, M.; da Silva, J.L.; Schwartzman, M.L.; Abraham, N.G. Overexpression of the heme oxygenase gene in renal cell carcinoma. *Proc. Soc. Exp. Biol. Med.* **1997**, *214*, 54–61. [[CrossRef](#)] [[PubMed](#)]
204. Alexanian, A.; Miller, B.; Roman, R.J.; Sorokin, A. 20-HETE-producing enzymes are up-regulated in human cancers. *Cancer Genomics Proteomics* **2012**, *9*, 163–169. [[PubMed](#)]
205. Chen, P.; Guo, M.; Wygle, D.; Edwards, P.A.; Falck, J.R.; Roman, R.J.; Scicli, A.G. Inhibitors of cytochrome P450 4a suppress angiogenic responses. *Am. J. Pathol.* **2005**, *166*, 615–624. [[CrossRef](#)]
206. Yu, W.; Chen, L.; Yang, Y.Q.; Falck, J.R.; Guo, A.M.; Li, Y.; Yang, J. Cytochrome P450  $\omega$ -hydroxylase promotes angiogenesis and metastasis by upregulation of vegf and mmp-9 in non-small cell lung cancer. *Cancer Chemother. Pharmacol.* **2011**, *68*, 619–629. [[CrossRef](#)] [[PubMed](#)]
207. Alexanian, A.; Rufanova, V.A.; Miller, B.; Flasch, A.; Roman, R.J.; Sorokin, A. Down-regulation of 20-HETE synthesis and signaling inhibits renal adenocarcinoma cell proliferation and tumor growth. *Anticancer Res.* **2009**, *29*, 3819–3824. [[PubMed](#)]
208. Akbulut, T.; Regner, K.R.; Roman, R.J.; Avner, E.D.; Falck, J.R.; Park, F. 20-HETE activates the RAF/MEK/ERK pathway in renal epithelial cells through an EGFR- and C-SRC-dependent mechanism. *Am. J. Physiol. Renal Physiol.* **2009**, *297*, 662–670. [[CrossRef](#)] [[PubMed](#)]
209. Lin, F.; Rios, A.; Falck, J.R.; Belosludtsev, Y.; Schwartzman, M.L. 20-Hydroxyeicosatetraenoic acid is formed in response to EGF and is a mitogen in rat proximal tubule. *Am. J. Physiol.* **1995**, *269*, 806–816.
210. Chen, J.K.; Falck, J.R.; Reddy, K.M.; Capdevila, J.; Harris, R.C. Epoxyeicosatrienoic acids and their sulfonimide derivatives stimulate tyrosine phosphorylation and induce mitogenesis in renal epithelial cells. *J. Biol. Chem.* **1998**, *273*, 29254–29261. [[CrossRef](#)] [[PubMed](#)]
211. Nithipatikom, K.; Isbell, M.A.; See, W.A.; Campbell, W.B. Elevated 12- and 20-hydroxyeicosatetraenoic acid in urine of patients with prostatic diseases. *Cancer Lett.* **2006**, *233*, 219–225. [[CrossRef](#)] [[PubMed](#)]
212. Vanella, L.; Di Giacomo, C.; Acquaviva, R.; Barbagallo, I.; Li Volti, G.; Cardile, V.; Abraham, N.G.; Sorrenti, V. Effects of ellagic acid on angiogenic factors in prostate cancer cells. *Cancers* **2013**, *5*, 726–738. [[CrossRef](#)] [[PubMed](#)]

213. Yu, W.; Chai, H.; Li, Y.; Zhao, H.; Xie, X.; Zheng, H.; Wang, C.; Wang, X.; Yang, G.; Cai, X.; et al. Increased expression of CYP4Z1 promotes tumor angiogenesis and growth in human breast cancer. *Toxicol. Appl. Pharmacol.* **2012**. [[CrossRef](#)] [[PubMed](#)]
214. Borin, T.F.; Zuccari, D.A.; Jardim-Perassi, B.V.; Ferreira, L.C.; Iskander, A.S.; Varma, N.R.; Shankar, A.; Guo, A.M.; Scicli, G.; Arbab, A.S. Het0016, a selective inhibitor of 20-HETE synthesis, decreases pro-angiogenic factors and inhibits growth of triple negative breast cancer in mice. *PLoS ONE* **2014**, *9*, 116247. [[CrossRef](#)] [[PubMed](#)]
215. Guo, A.M.; Sheng, J.; Scicli, G.M.; Arbab, A.S.; Lehman, N.L.; Edwards, P.A.; Falck, J.R.; Roman, R.J.; Scicli, A.G. Expression of CYP4A1 in U251 human glioma cell induces hyperproliferative phenotype in vitro and rapidly growing tumors in vivo. *J. Pharmacol. Exp. Ther.* **2008**, *327*, 10–19. [[CrossRef](#)] [[PubMed](#)]
216. Guo, M.; Roman, R.J.; Falck, J.R.; Edwards, P.A.; Scicli, A.G. Human u251 glioma cell proliferation is suppressed by het0016 [*n*-hydroxy-*n'*-(4-butyl-2-methylphenyl)formamidine], a selective inhibitor of CYP4A. *J. Pharmacol. Exp. Ther.* **2005**, *315*, 526–533. [[CrossRef](#)] [[PubMed](#)]
217. Guo, M.; Roman, R.J.; Fenstermacher, J.D.; Brown, S.L.; Falck, J.R.; Arbab, A.S.; Edwards, P.A.; Scicli, A.G. 9l gliosarcoma cell proliferation and tumor growth in rats are suppressed by *n*-hydroxy-*n'*-(4-butyl-2-methylphenol) formamidine (het0016), a selective inhibitor of CYP4A. *J. Pharmacol. Exp. Ther.* **2006**, *317*, 97–108. [[CrossRef](#)] [[PubMed](#)]
218. Shankar, A.; Borin, T.F.; Iskander, A.; Varma, N.R.; Achyut, B.R.; Jain, M.; Mikkelsen, T.; Guo, A.M.; Chwang, W.B.; Ewing, J.R. Combination of vatalanib and a 20-HETE synthesis inhibitor results in decreased tumor growth in an animal model of human glioma. *Oncotarget Ther.* **2016**, *9*, 1205–1219.
219. Zhao, H.; Li, Y.; Wang, Y.; Zhang, J.; Ouyang, X.; Peng, R.; Yang, J. Antitumor and immunostimulatory activity of a polysaccharide-protein complex from scolopendra subspinipes mutilans I: Koch in tumor-bearing mice. *Food Chem. Toxicol.* **2012**, *50*, 2648–2655. [[CrossRef](#)] [[PubMed](#)]
220. Theken, K.N.; Deng, Y.; Schuck, R.N.; Oni-Orisan, A.; Miller, T.M.; Kannon, M.A.; Poloyac, S.M.; Lee, C.R. Enalapril reverses high-fat diet-induced alterations in cytochrome P450-mediated eicosanoid metabolism. *Am. J. Physiol. Endocrinol. Metab.* **2012**, *302*, 500–509. [[CrossRef](#)] [[PubMed](#)]
221. Joseph, G.; Soler, A.; Hutcheson, R.; Hunter, I.; Bradford, C.; Hutcheson, B.; Gotlinger, K.H.; Jiang, H.; Falck, J.R.; Proctor, S.; et al. Elevated 20-HETE impairs coronary collateral growth in metabolic syndrome via endothelial dysfunction. *Am. J. Physiol. Heart Circ. Physiol.* **2016**. ajpheart 00561. [[CrossRef](#)] [[PubMed](#)]
222. Kim, D.H.; Puri, N.; Sodhi, K.; Falck, J.R.; Abraham, N.G.; Shapiro, J.; Schwartzman, M.L. Cyclooxygenase-2 dependent metabolism of 20-HETE increases adiposity and adipocyte enlargement in mesenchymal stem cell-derived adipocytes. *J. Lipid Res.* **2013**, *54*, 786–793. [[CrossRef](#)] [[PubMed](#)]
223. Yousif, M.H.; Benter, I.F.; Dunn, K.M.; Dahly-Vernon, A.J.; Akhtar, S.; Roman, R.J. Role of 20-hydroxyeicosatetraenoic acid in altering vascular reactivity in diabetes. *Auton. Autacoid Pharmacol.* **2009**, *29*, 1–12. [[CrossRef](#)] [[PubMed](#)]
224. Wang, Z.; Yadav, A.S.; Leskova, W.; Harris, N.R. Inhibition of 20-HETE attenuates diabetes-induced decreases in retinal hemodynamics. *Exp. Eye Res.* **2011**, *93*, 108–113. [[CrossRef](#)] [[PubMed](#)]
225. Eid, S.; Abou-Kheir, W.; Sabra, R.; Daoud, G.; Jaffa, A.; Ziyadeh, F.N.; Roman, L.; Eid, A.A. Involvement of renal cytochromes P450 and arachidonic acid metabolites in diabetic nephropathy. *J. Biol. Regul. Homeost. Agents* **2013**, *27*, 693–703. [[CrossRef](#)] [[PubMed](#)]
226. Chen, Y.J.; Li, J.; Quilley, J. Deficient renal 20-HETE release in the diabetic rat is not the result of oxidative stress. *Am. J. Physiol. Heart Circ. Physiol.* **2008**, *294*, 2305–2312. [[CrossRef](#)] [[PubMed](#)]
227. Tse, M.M.; Aboutabl, M.E.; Althurwi, H.N.; Elshenawy, O.H.; Abdelhamid, G.; El-Kadi, A.O. Cytochrome P450 epoxygenase metabolite, 14,15-*eet*, protects against isoproterenol-induced cellular hypertrophy in h9c2 rat cell line. *Vascul. Pharmacol.* **2013**, *5*, 363–373. [[CrossRef](#)] [[PubMed](#)]

