

High expression of Sam68 in sacral chordomas is associated with worse clinical outcomes

Hai Wen^{1,*}
Pengzhi Li^{1,*}
Hong Ma¹
Jiaoyun Zheng²
Yipin Yu¹
Guohua Lv¹

¹Department of Spine Surgery, The Second Xiangya Hospital of Central South University, Changsha, Hunan, China; ²Department of Pathology, The Second Xiangya Hospital of Central South University, Changsha, Hunan, China

*These authors contributed equally to this work

Abstract: Src-associated in mitosis of 68 kDa (Sam68), also known as KHDRBS1 (KH domain-containing, RNA-binding, signal transduction-associated 1), is a member of the signal transduction and activation of RNA family. Previous studies have demonstrated that the aberrant expression of Sam68 is associated with the progression and prognosis of a variety of cancers, but little is known about its expression and role in chordomas, which are rare and aggressive bone neoplasms. In this study, we analyzed 40 tumor tissues and 20 distant normal tissues obtained from 40 patients with sacral chordoma using immunohistochemistry, and observed the expression of Sam68 was significantly upregulated in sacral chordomas compared with normal tissues ($P=0.001$). A positive correlation between the expression of Sam68 and the cell proliferation index Ki-67 was determined using Spearman's rank correlation test ($\gamma=0.599$, $P<0.001$). In addition, high expression of Sam68 was significantly associated with surrounding muscle invasion ($P<0.001$). Moreover, Kaplan–Meier curves showed that patients with overexpressed Sam68 had shorter local recurrence-free survival time ($P<0.001$). Lastly, multivariate analysis indicated that Sam68 is an independent prognostic factor for the local recurrence-free survival of sacral chordomas (hazard ratio =5.929, 95% CI: 1.092–32.188, $P=0.039$). Our findings suggest the use of Sam68 as a predictor for the recurrence of sacral chordomas.

Keywords: sacral chordoma, Sam68, recurrence, prognostic factor

Introduction

Chordomas are rare malignant bone neoplasms that are thought to arise from embryonic remnants of the notochord, with an annual incidence of ~1/1,000,000 all over the world.^{1–3} Chordomas are characterized by severe aggressiveness and a high rate of local recurrence.^{4–6} The overall 5- and 10-year survival rates following surgical resection are 45%–77% and 28%–50%, respectively.^{3,7–9} Most patients ultimately die of exhaustion from repeated surgeries and fatal destruction of local tissues. Also, 50%–60% chordomas occur at the sacrum and often reach a large size due to their indolent symptoms and slow growth.^{5,10} Surgery remains the mainstay of treatment due to the poor sensitivity of chordomas to chemotherapy and radiotherapy;^{11–14} however, patients have a high risk of local recurrence even after surgical excision with wide resection margins.^{14–15} Therefore, the development of therapeutic strategies is highly needed for patients affected by chordoma.

Src-associated in mitosis of 68 kDa (Sam68), also known as KHDRBS1 (KH domain-containing, RNA-binding, signal transduction-associated 1), is a member of the signal transduction and activation of RNA family, which has been demonstrated to transform cells to an oncogenic state.^{16,17} Using its RNA-binding property, Sam68 regulates a variety of cellular processes, including RNA splicing, RNA stability, RNA nuclear export and neuronal activity.^{18–28} Sam68 was also identified as a signaling

Correspondence: Guohua Lv
Department of Spine Surgery, The Second Xiangya Hospital of Central South University, 139 Renmin Middle Road, Changsha 410011, Hunan, China
Tel/fax +86 731 8432 7198
Email spinegh@163.com

molecule in multiple signaling pathways, such as NF- κ B activation and apoptosis signaling by the tumor necrosis factor receptor.^{29,30} Moreover, several cancer-relevant proteins including Bcl-x, cyclin D1b and CD44 are targets of Sam68.^{31–34} High expression of Sam68 is associated with poor prognosis of various malignancies, and its depletion by siRNA induces cell cycle arrest and restrains cell proliferation.^{35–39} Sam68 also plays a tumor-suppressive role in certain cancers; for example, high expression of Sam68 leads to cell cycle arrest and apoptosis in NIH-3T3 fibroblasts.⁴⁰ Thus, the effects of Sam68 on different cancers are double sided. However, the expression and role of Sam68 in chordomas are not well understood.

In this study, we investigated the expression of Sam68 in sacral chordomas compared with normal tissues using immunohistochemistry, and evaluated the association between Sam68 expression and the clinicopathologic features and prognosis of patients with sacral chordoma.

Materials and methods

Patients and tissue samples

In this study, we enrolled 40 patients (23 males and 17 females) who were diagnosed with sacral chordoma and received surgical treatment in the Department of Spine Surgery, The Second Xiangya Hospital of Central South University (Changsha, China) between January 2005 and October 2015. The mean age of patients was 55.1 years (range, 29–74 years). They were not treated by tumor-specific therapy including radiotherapy and chemotherapy before surgery. Clinicopathologic data including age and gender of the patients; tumor location, size, grade and stage; tumor invasion of the surrounding muscles; and the type of surgical resection were obtained from patients' medical records, retrospectively. Tumor grade and stage were evaluated based on the Enneking staging system for the surgical staging of malignant bone and soft tissue tumors.^{41,42} Resected specimens were assessed either as Enneking appropriate or Enneking inappropriate by anatomic pathologists, according to the Enneking principles.⁴³ Tumor invasion of the surrounding muscles was determined using preoperative magnetic resonance imaging and histologic examination of tissues.⁴⁴ In addition to the tumor tissues, we also obtained 20 distant normal tissues at least 3 cm from the resection margins as a control. The tissues were fixed into 10% buffered formalin immediately after surgery and embedded in paraffin. The paraffin blocks were subsequently cut into 4 μ m thick slices for immunohistochemical staining. Tumor diagnosis was confirmed by two experienced pathologists through histologic examination of hematoxylin and eosin-stained sections. The study was approved by the Ethical

Committee of The Second Xiangya Hospital of Central South University, and written informed consent was obtained from each patient for this study.

Follow-up

After the primary surgery, patients were followed up every 3 months during the first 2 years, every 6 months in the next 3 years and annually thereafter, and they received clinical and radiographic examinations each time until October 2016. Tumor recurrence was diagnosed by analyzing clinical manifestation and imaging results. The interval between the primary surgery and the first incidence of local tumor recurrence or death from any cause was defined as the local recurrence-free survival (LRFS) or the overall survival (OS), respectively.

Immunohistochemistry

Tissue slices were dewaxed in xylene and rehydrated by passage through a series of ethanol solutions; subsequently, the tissues were immersed in 0.01 M citrate buffer (pH 6.0) and heated in a microwave oven at 121°C for 15 min to retrieve antigen activity. Potential endogenous peroxidase activity was quenched in 3% hydrogen peroxide for 10 min. After rinsing with PBS, tissue sections were blocked with 10% normal goat serum at room temperature for 10 min. Subsequently, they were incubated overnight at 4°C with primary antibodies, anti-Sam68 (1:100; Santa Cruz Biotechnology, Dallas, TX, USA) or anti-Ki-67 (1:100; Abcam, Cambridge, UK). The negative controls were not incubated with primary antibodies. The next day, tissue sections were rinsed with PBS three times, followed by 30 min incubation at 37°C with polymerized horseradish peroxidase-conjugated anti-rabbit IgG (Boster, Wuhan, China). Antibody binding was visualized using 3,3'-diaminobenzidine solution. The sections were finally counterstained with hematoxylin and were mounted for observation.

Immunohistochemical evaluation

Two experienced and independent pathologists who were blinded to the patients' clinicopathologic data evaluated and scored the immunostained sections using a semi-quantitative assessment reported previously.⁴⁵ In each section, five high-power fields were randomly chosen and at least 300 cells per field were counted. Cells with immunostained brown nucleus were considered positive for Sam68 or Ki-67 expression. The immunoreactivity score for Sam68 expression was calculated by multiplying the staining intensity, established as 0 (no staining), 1 (weak staining), 2 (moderate staining) or 3 (strong staining), by the percentage of positive tumor cells, established as 0 (<1%), 1 (1%–10%), 2 (11%–50%)

or 3 (>50%), resulting in scores ranging from 0 to 9; the level of Sam68 expression was divided into low (0–3) and high (4–9) for survival analysis.⁴⁶ As described previously,⁴⁵ Ki-67 index was defined as the percentage of Ki-67–positive cells and categorized as a low (<10%) or high (\geq 10%) index.

Statistical analysis

All statistical analyses were conducted with SPSS 19.0 (IBM Corporation, Armonk, NY, USA). The χ^2 or Fisher's exact test was used appropriately to examine either the difference in Sam68 expression between the tumor and normal tissues or the association between Sam68 expression and patients' clinicopathologic characteristics. Spearman's rank correlation test was used to assess the correlation between Sam68 expression and Ki-67 index. The association between

each parameter and LRFS or OS was analyzed by log-rank test and shown by Kaplan–Meier curves. Multivariate analysis was subsequently performed by Cox's proportional hazard model to identify the independent prognostic factors. A *P*-value <0.05 was considered statistically significant.

Results

Upregulation of Sam68 expression and its positive correlation with Ki-67 index in sacral chordomas

We first compared the expression of Sam68 in 40 sacral chordoma tissues and 20 distant normal tissues using immunohistochemistry. As shown in Figure 1, Sam68 is prominently expressed in the nucleus of positive cells. A high level of Sam68 (Figure 1C) was scored in 60% (24/40) of tumor tissues

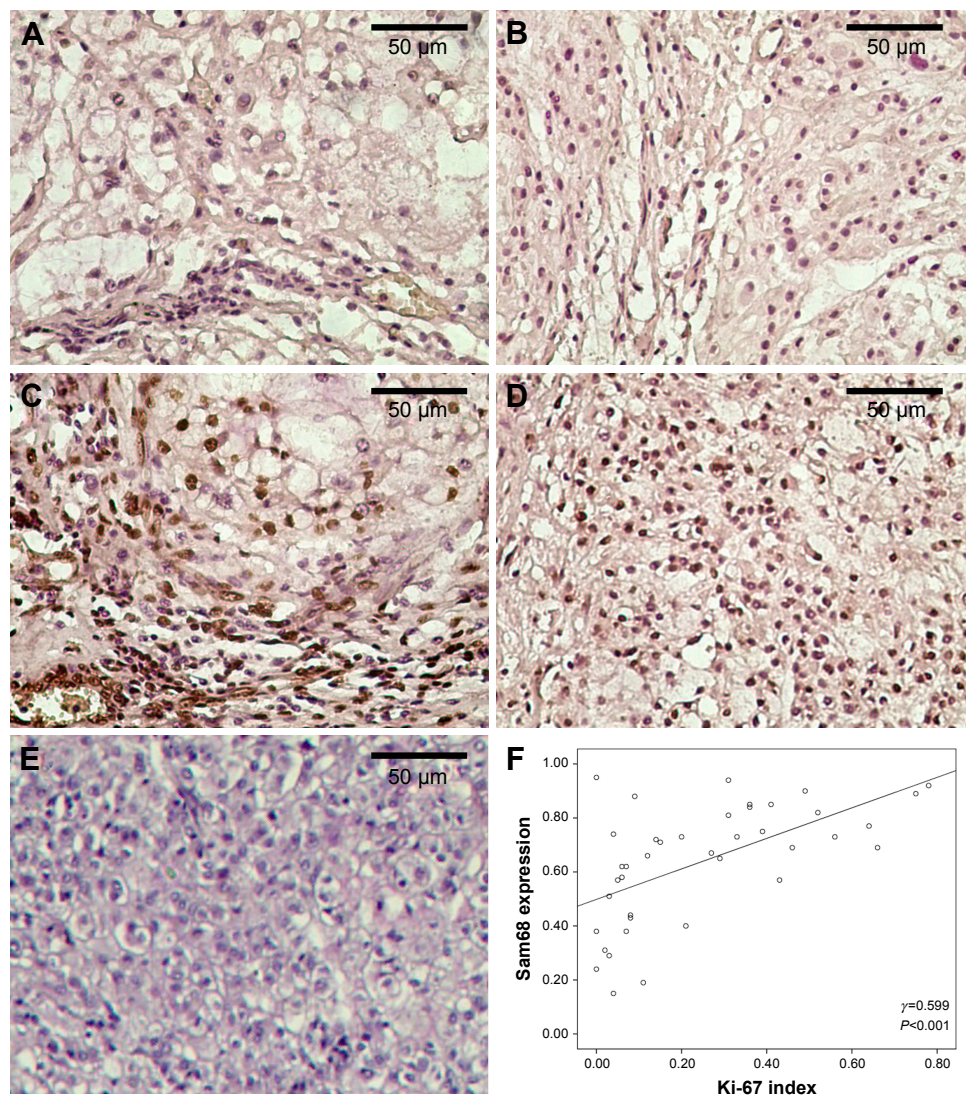


Figure 1 Representative expression of Sam68 and Ki-67 and their correlation in sacral chordomas.

Notes: (A) Low expression of Sam68; (B) low expression of Ki-67; (C) high expression of Sam68; (D) high expression of Ki-67; (E) negative control. All magnification, \times 400. (F) Positive correlation between Sam68 expression and Ki-67 index in sacral chordomas using Spearman's rank correlation test.

Table 1 Expression of Sam68 in sacral chordomas compared with distant normal tissues

Tissue samples	Total	Sam68 expression		P-value
		High (%)	Low (%)	
Sacral chordomas	40	24 (60)	16 (40)	0.001
Distant normal tissues	20	3 (15)	17 (85)	

and 15% (3/20) of normal tissues, whereas 40% (16/40) of tumor tissues and 85% (17/20) of normal tissues expressed a low level of Sam68 (Figure 1A), respectively. Sam68 expression was significantly upregulated in sacral chordomas compared with normal tissues ($P=0.001$; Table 1). Additionally, we examined the expression of Ki-67, a widely used cell proliferation index in sacral chordoma tissues. There were 16 tumor tissues with a low Ki-67 index (Figure 1B) and 24 tumor tissues with a high Ki-67 index (Figure 1D). No positive cells were observed in negative control (Figure 1E). It was found that tumor tissues with a high Ki-67 index had significantly higher level of Sam68 ($P<0.001$; Table 2). Moreover, a positive correlation between Sam68 expression and Ki-67 index ($\gamma=0.599$, $P<0.001$; Figure 1F) was demonstrated using Spearman's rank correlation test.

Association between Sam68 expression and the clinicopathologic characteristics of patients with sacral chordoma

The association between Sam68 expression and the clinicopathologic characteristics of patients with sacral chordoma was assessed by the χ^2 or the Fisher's exact test, as appropriate. In addition to Ki-67 index, Sam68 expression was significantly associated with surrounding muscle invasion ($P<0.001$; Table 2) and the type of tumor resection ($P=0.006$; Table 2). No statistically significant association was observed between Sam68 expression and other clinicopathologic characteristics (Table 2).

Association between Sam68 expression and the prognosis of patients with sacral chordoma

During the period of follow-up, 27 (67.5%) patients had local tumor recurrence and 16 (40%) patients died, with a median LRFS of 18 months (range, 5–45 months) and a median OS of 47 months (range, 12–141 months). Kaplan–Meier curves demonstrated that a high level of either Sam68 ($P<0.001$; Figure 2A and Table 3) or Ki-67 ($P=0.016$; Figure 2B and Table 3) was significantly associated with shorter LRFS time. Additionally, patients with low Sam68/Ki-67 coexpres-

Table 2 Association between Sam68 expression and the clinicopathologic characteristics of patients with sacral chordoma

Variables	Total	Sam68 expression		P-value
		High	Low	
Age (years)				0.505
<50	15	10	5	
≥ 50	25	14	11	
Gender				0.601
Male	23	13	10	
Female	17	11	6	
Tumor location				0.292
Above S3	24	16	8	
S3 and below	16	8	8	
Tumor size (cm)				0.343
<5	14	7	7	
≥ 5	26	17	9	
Tumor grade				0.581
High	27	17	10	
Low	13	7	6	
Tumor stage				0.129*
IA	9	3	6	
IB	4	4	0	
IIA	4	2	2	
IIB	20	12	8	
III	3	3	0	
Surrounding muscle invasion				<0.001
Yes	25	21	4	
No	15	3	12	
Type of resection				0.006
EI	18	15	3	
EA	22	9	13	
Ki-67 index				<0.001
High	24	21	3	
Low	16	3	13	

Note: *Using the Fisher's exact test.

Abbreviations: EA, Enneking appropriate; EI, Enneking inappropriate.

sion had an increased LRFS time ($P<0.001$; Figure 2C), whereas those with high Sam68/Ki-67 coexpression had a reduced LRFS time ($P=0.002$; Figure 2D). Shorter LRFS time was also observed in patients with higher tumor stage ($P<0.001$; Table 3 and Figure 2E), surrounding muscle invasion ($P<0.001$; Table 3 and Figure 2F) and Enneking inappropriate resection ($P<0.001$; Table 3 and Figure 2G). Moreover, worse OS was related to higher tumor stage ($P<0.001$; Figure 3A and Table 4), surrounding muscle invasion ($P=0.032$; Figure 3B and Table 4) and Enneking inappropriate resection ($P=0.015$; Figure 3C and Table 4), whereas there was no association between Sam68 expression and OS ($P=0.228$; Table 4). Finally, the factors associated with the LRFS or OS were included in the multivariate analysis using Cox's proportional hazard model. The results indicated that Sam68 expression (hazard ratio [HR] =5.929, 95% CI: 1.092–32.188, $P=0.039$; Table 3), tumor stage (HR =2.272,

95% CI: 1.384–3.729, $P=0.001$; Table 3), surrounding muscle invasion (HR =13.128, 95% CI: 2.793–61.698, $P=0.001$; Table 3) and the type of tumor resection (HR =6.678, 95% CI: 2.052–21.736, $P=0.002$; Table 3) were the independent prognostic factors for the LRFS, whereas tumor stage (HR =1.677, 95% CI: 1.002–2.806, $P=0.049$; Table 4) was the only independent prognostic factor for the OS.

Discussion

Chordomas are slow-growing malignancies with a strong invasive ability and a high rate of local recurrence.⁴⁷ Obtaining

wide resection margins is a key factor determining tumor recurrence and long-term prognosis; however, it is often technically difficult because of the proximity of the lesion to vital neurovascular structures and tumor invasion into the surrounding tissues.⁴⁸ In order to achieve an improvement of tumor therapy, a lot of researchers have tried to identify novel biomarkers predicting the prognosis of patients. In this study, we demonstrated that Sam68 expression was significantly upregulated and positively correlated with the expression of cell proliferating index Ki-67 in sacral chordomas. Additionally, high expression of Sam68 was significantly associated

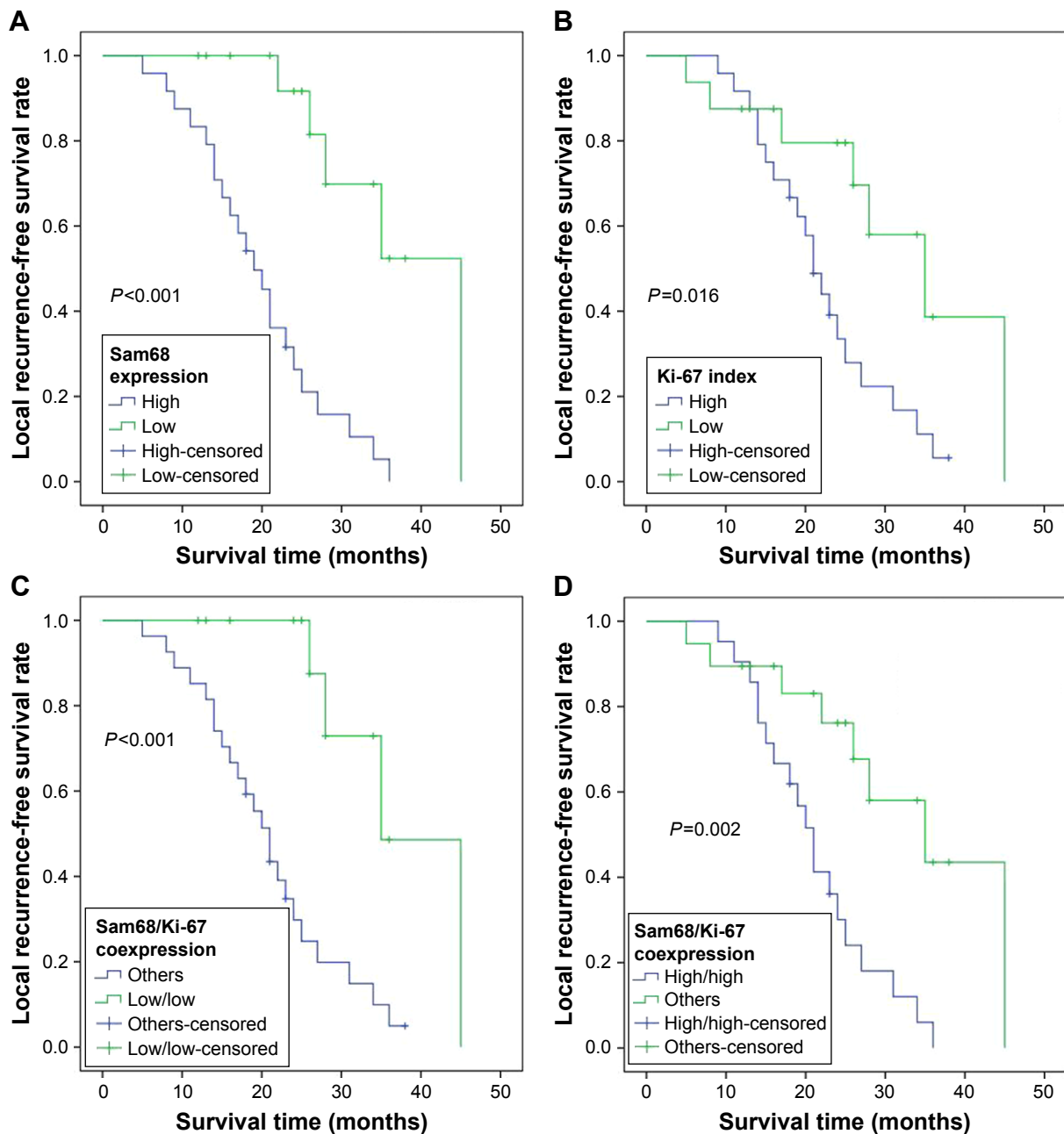


Figure 2 (Continued)

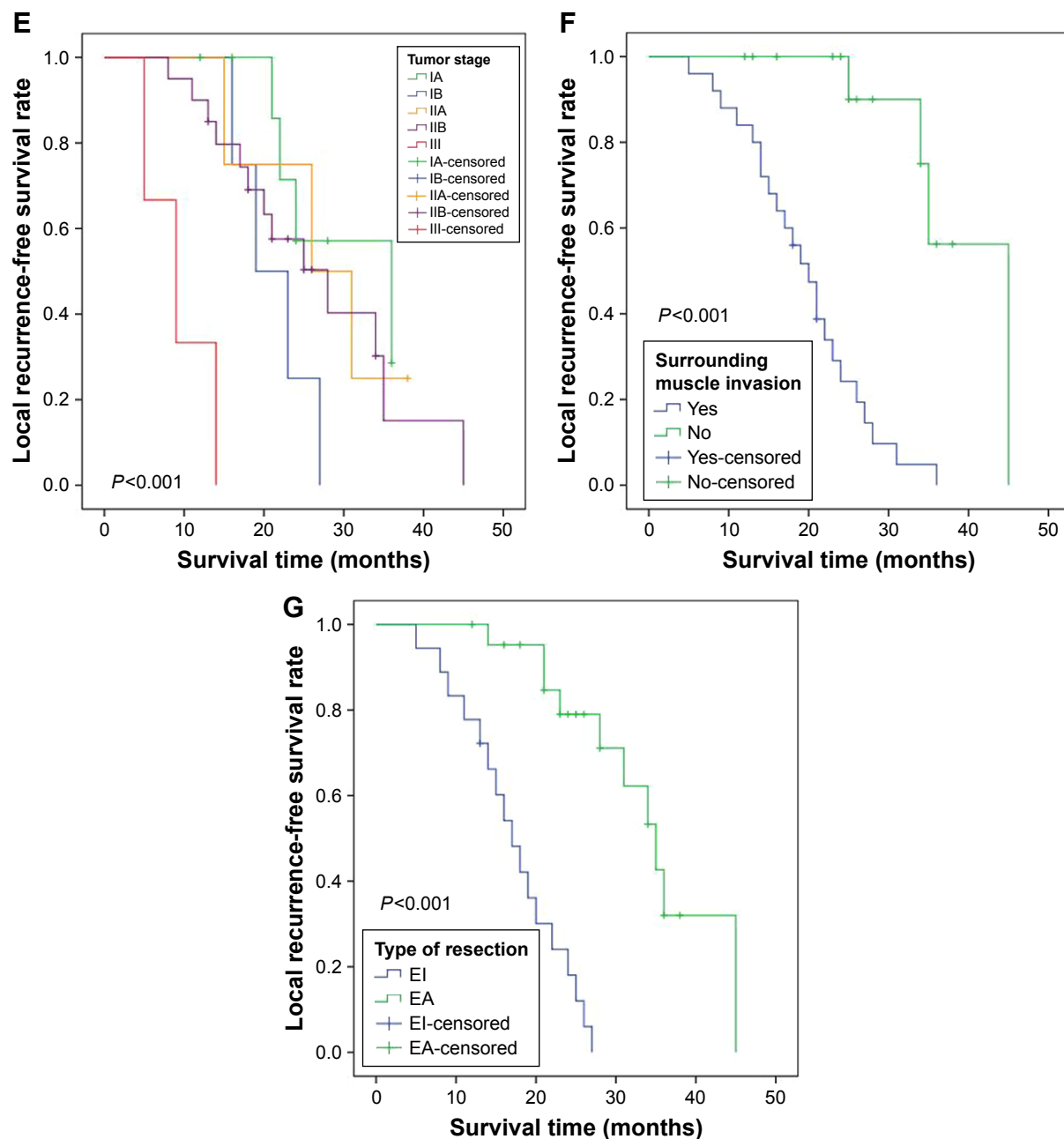


Figure 2 Kaplan–Meier curves of the local recurrence-free survival of patients with sacral chordoma.

Notes: (A) Stratified by Sam68 expression; (B) stratified by Ki-67 index; (C) stratified by Sam68/Ki-67 coexpression (low/low and others); (D) stratified by Sam68/Ki-67 coexpression (high/high and others); (E) stratified by tumor stage; (F) stratified by surrounding muscle invasion; (G) stratified by the type of tumor resection.

Abbreviations: EA, Enneking appropriate; EI, Enneking inappropriate.

with tumor invasion into the surrounding muscles and poor LRFS of patients with sacral chordoma. Moreover, Sam68 was statistically identified as an independent prognostic factor for the LRFS. Our data suggest the use of Sam68 as a predictor for tumor recurrence.

Sam68 has been identified as an RNA-binding protein and an adaptor recruiting other signaling molecules.²⁹ Previous studies have demonstrated the significance of Sam68 in carcinogenesis; some of them support the promoting effect of Sam68 on tumor development,^{36,37} whereas others have

shown the tumor suppressive function of Sam68.⁴⁰ In this study, we observed an upregulation of Sam68 expression in sacral chordoma compared with normal tissues and found a positive correlation between the expression of Sam68 and cell proliferation index Ki-67, indicating that Sam68 probably promotes the growth of chordomas. The potential effect of Sam68 on the proliferation of chordoma cells is supported by the association between upregulation of Sam68 expression and cell proliferation in various cancers such as human prostate cancer and breast cancer.^{35,37} Additionally, Sam68

Table 3 Kaplan–Meier analysis and multivariate Cox’s proportional hazard analysis of the prognostic factors for the local recurrence-free survival of patients with sacral chordoma

Variables	Categories	Kaplan–Meier analysis		Multivariate analysis	
		P-value		P-value	HR (95% CI)
Age (years)	<50/≥50	0.671			
Gender	Male/female	0.587			
Tumor location	Above S3/S3 and below	0.091			
Tumor size (cm)	<5/≥5	0.124			
Tumor grade	High/low	0.595			
Tumor stage	IA/IB/IIA/IIB/III	<0.001		0.001	2.272 (1.384–3.729)
Surrounding muscle invasion	Yes/no	<0.001		0.001	13.128 (2.793–61.698)
Type of resection	EI/EA	<0.001		0.002	6.678 (2.052–21.736)
Ki-67 index	High/low	0.016		0.552	0.658 (0.166–2.613)
Sam68 expression	High/low	<0.001		0.039	5.929 (1.092–32.188)
Sam68/Ki-67 coexpression	Low/low	<0.001*			
	High/high	0.002*			
	High/low and low/high				

Note: *Not included in the multivariate analysis because the variables depend on the expression of Sam68 and Ki-67.

Abbreviations: EA, Enneking appropriate; EI, Enneking inappropriate; HR, hazard ratio.

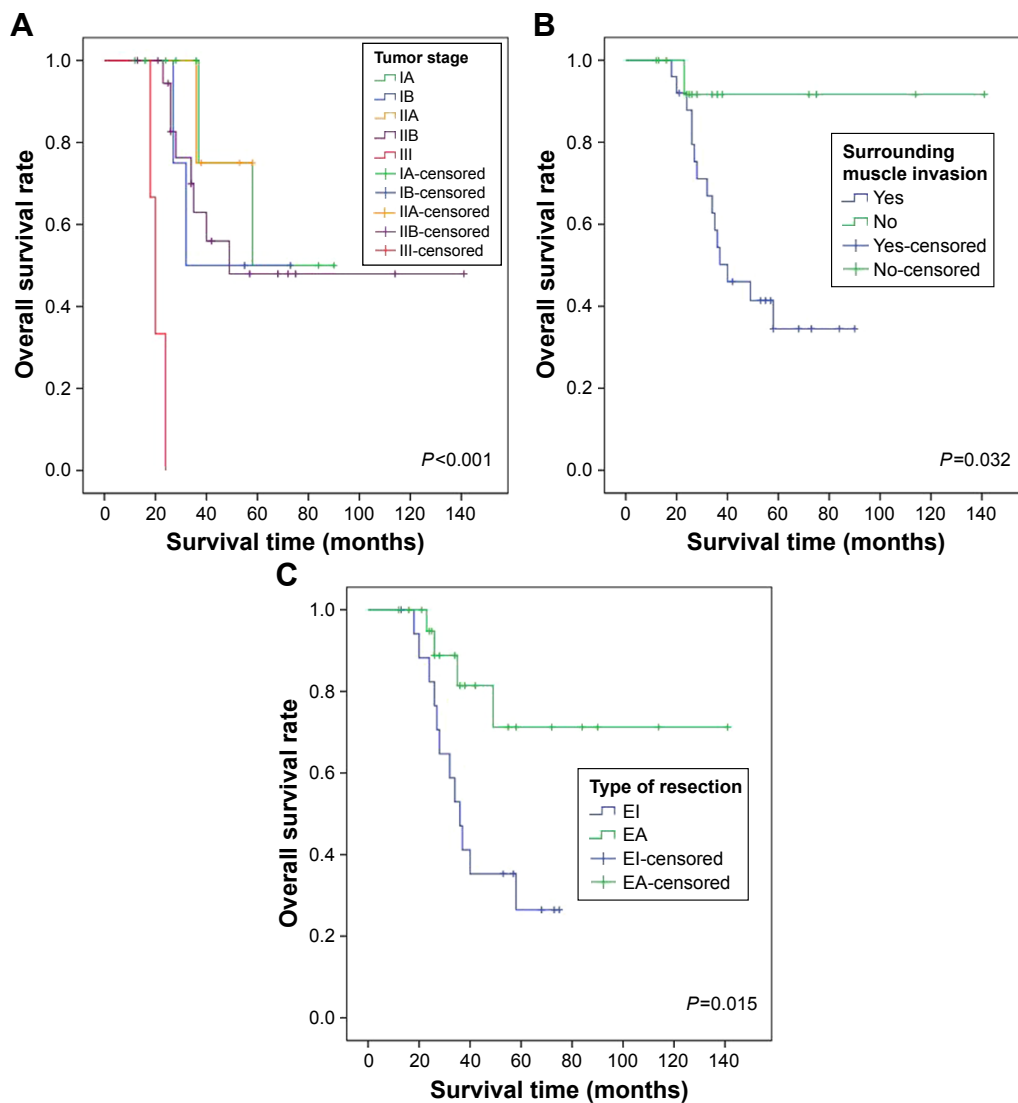


Figure 3 Kaplan–Meier curves of the overall survival of patients with sacral chordoma.

Notes: (A) Stratified by tumor stage; (B) stratified by surrounding muscle invasion; (C) stratified by the type of tumor resection.

Abbreviations: EA, Enneking appropriate; EI, Enneking inappropriate.

Table 4 Kaplan–Meier analysis and multivariate Cox’s proportional hazard analysis of the prognostic factors for the overall survival of patients with sacral chordoma

Variables	Categories	Kaplan–Meier analysis	Multivariate analysis	
		P-value	P-value	HR (95% CI)
Age (years)	<50/≥50	0.362		
Gender	Male/female	0.319		
Tumor location	Above S3/S3 and below	0.075		
Tumor size (cm)	<5/≥5	0.065		
Tumor grade	High/low	0.468		
Tumor stage	IA/IB/IIA/IIB/III	<0.001	0.049	1.677 (1.002–2.806)
Surrounding muscle invasion	Yes/no	0.032	0.089	6.272 (0.755–52.075)
Type of resection	EI/EA	0.015	0.175	2.254 (0.697–7.291)
Ki-67 index	High/low	0.628		
Sam68 expression	High/low	0.228		
Sam68/Ki-67 coexpression	Low/low	0.250		
	High/high	0.547		
	High/low and low/high			

Abbreviations: EA, Enneking appropriate; EI, Enneking inappropriate; HR, hazard ratio.

was observed to be prominently located in the nucleus of sacral chordoma cells, which is consistent with the results of several reports demonstrating that Sam68 is a nuclear protein involved in gene transcription, alternative splicing and nuclear export.^{27,32,34,49} However, cytoplasmic Sam68 also plays a significant role in the progression of certain human cancers.^{37,50} The inconsistent localization of Sam68 is probably due to its different roles in multiple signaling pathways that affect the development of tumors. Thus, the significance of the nuclear localization of Sam68 in chordoma cells should be further explored.

The association between Sam68 expression and the clinical data of tumor patients has been widely investigated previously. For example, high expression of Sam68 is associated with higher tumor stage and poorer recurrence-free survival of patients with bladder cancer;⁵¹ Sam68 is also involved in the progression of neuroblastoma and has a predictive significance for the prognosis of patients with neuroblastoma.⁴⁶ In this study, we demonstrated a significant association between high Sam68 expression and surrounding muscle invasion of sacral chordomas and shorter LRFS of patients with sacral chordoma. Moreover, the results of multivariate analysis indicated that Sam68 can be used as an independent prognostic biomarker for the recurrence of sacral chordomas. Promoting the proliferation of residual chordoma cells after surgical resection may be one of the mechanisms of how Sam68 modulates the recurrence of sacral chordomas, whereas more detailed evidence needs to be further explored. Based on our results, we propose that surgeons should be more careful in choosing surgical strategies and try to achieve wide enough resection margins during tumor excision when high expression of Sam68 is determined

using immunohistochemical analysis in patients with sacral chordoma who receive preoperative fine-needle aspiration biopsy; even if wide resection margin is achieved, patients with high levels of Sam68 should be warned of a relatively high risk of local tumor recurrence after the primary surgery and be followed up cautiously at short-term intervals for timely and effective treatment. It is worth mentioning that we did not observe an association between Sam68 expression and tumor size, grade or stage, which could be due to a small sample size, relatively low statistical power or the influence of other risk factors. Although patients with sacral chordoma who had high Sam68 levels did not show reduced OS in our study, more evidence is needed to rule out a relationship between Sam68 expression and the OS.

In summary, we demonstrated that high expression of Sam68 in sacral chordomas is significantly associated with worse clinical outcomes. Our findings suggest that Sam68 can be used as a predictor for the recurrence of sacral chordomas.

Acknowledgment

This work was supported by the Fundamental Research Funds for the Central Universities of Central South University (No 2016zzts149).

Disclosure

The authors report no conflicts of interest in this work.

References

1. Stiller CA, Trama A, Serraino D, et al; RARECARE Working Group. Descriptive epidemiology of sarcomas in Europe: report from the RARE-CARE project. *Eur J Cancer*. 2013;49(3):684–695.

2. Casali PG, Stacchiotti S, Sangalli C, Olmi P, Gronchi A. Chordoma. *Curr Opin Oncol*. 2007;19(4):367–370.
3. McMaster ML, Goldstein AM, Bromley CM, Ishibe N, Parry DM. Chordoma: incidence and survival patterns in the United States, 1973–1995. *Cancer Causes Control*. 2001;12(1):1–11.
4. Walcott BP, Nahed BV, Mohyeldin A, Coumans JV, Kahle KT, Ferreira MJ. Chordoma: current concepts, management, and future directions. *Lancet Oncol*. 2012;13(2):e69–e76.
5. Chugh R, Tawbi H, Lucas DR, Biermann JS, Schuetze SM, Baker LH. Chordoma: the nonsarcoma primary bone tumor. *Oncologist*. 2007;12(11):1344–1350.
6. Tzortzidis F, Elahi F, Wright D, Natarajan SK, Sekhar LN. Patient outcome at long-term follow-up after aggressive microsurgical resection of cranial base chordomas. *Neurosurgery*. 2006;59(2):230–237; discussion 230–237.
7. Samson IR, Springfield DS, Suit HD, Mankin HJ. Operative treatment of sacrococcygeal chordoma. A review of twenty-one cases. *J Bone Joint Surg Am*. 1993;75(10):1476–1484.
8. Smith J, Ludwig RL, Marcove RC. Sacrococcygeal chordoma. A clinicoradiological study of 60 patients. *Skeletal Radiol*. 1987;16(1):37–44.
9. Sundaresan N, Huvos AG, Krol G, Lane JM, Brennan M. Surgical treatment of spinal chordomas. *Arch Surg*. 1987;122(12):1479–1482.
10. Hulen CA, Temple HT, Fox WP, Sama AA, Green BA, Eismont FJ. Oncologic and functional outcome following sacrectomy for sacral chordoma. *J Bone Joint Surg Am*. 2006;88(7):1532–1539.
11. Catton C, O’Sullivan B, Bell R, et al. Chordoma: long-term follow-up after radical photon irradiation. *Radiother Oncol*. 1996;41(1):67–72.
12. Cheng EY, Ozerdemoglu RA, Transfeldt EE, Thompson RC Jr. Lumbosacral chordoma. Prognostic factors and treatment. *Spine (Phila Pa 1976)*. 1999;24(16):1639–1645.
13. Azzarelli A, Quagliuolo V, Cerasoli S, et al. Chordoma: natural history and treatment results in 33 cases. *J Surg Oncol*. 1988;37(3):185–191.
14. York JE, Kaczaraj A, Abi-Said D, et al. Sacral chordoma: 40-year experience at a major cancer center. *Neurosurgery*. 1999;44(1):74–79; discussion 79–80.
15. Stacchiotti S, Sommer J; Chordoma Global Consensus Group. Building a global consensus approach to chordoma: a position paper from the medical and patient community. *Lancet Oncol*. 2015;16(2):e71–e83.
16. Burd CG, Dreyfuss G. Conserved structures and diversity of functions of RNA-binding proteins. *Science*. 1994;265(5172):615–621.
17. Johnson DL, Johnson SA. Cell biology. RNA metabolism and oncogenesis. *Science*. 2008;320(5875):461–462.
18. Rajan P, Gaughan L, Dalglish C, et al. Regulation of gene expression by the RNA-binding protein Sam68 in cancer. *Biochem Soc Trans*. 2008;36(Pt 3):505–507.
19. Lukong KE, Richard S. Sam68, the KH domain-containing superSTAR. *Biochim Biophys Acta*. 2003;1653(2):73–86.
20. Huot ME, Vogel G, Zabaraukas A, et al. The Sam68 STAR RNA-binding protein regulates mTOR alternative splicing during adipogenesis. *Mol Cell*. 2012;46(2):187–199.
21. Iijima T, Wu K, Witte H, et al. SAM68 regulates neuronal activity-dependent alternative splicing of neurexin-1. *Cell*. 2011;147(7):1601–1614.
22. Bielli P, Busa R, Paronetto MP, Sette C. The RNA-binding protein Sam68 is a multifunctional player in human cancer. *Endocr Relat Cancer*. 2011;18(4):R91–R102.
23. Henao-Mejia J, Liu Y, Park IW, Zhang J, Sanford J, He JJ. Suppression of HIV-1 Nef translation by Sam68 mutant-induced stress granules and nef mRNA sequestration. *Mol Cell*. 2009;33(1):87–96.
24. Rajan P, Gaughan L, Dalglish C, et al. The RNA-binding and adaptor protein Sam68 modulates signal-dependent splicing and transcriptional activity of the androgen receptor. *J Pathol*. 2008;215(1):67–77.
25. Richard S. Reaching for the stars: Linking RNA binding proteins to diseases. *Adv Exp Med Biol*. 2010;693:142–157.
26. Sette C. Post-translational regulation of star proteins and effects on their biological functions. *Adv Exp Med Biol*. 2010;693:54–66.
27. Matter N, Herrlich P, Konig H. Signal-dependent regulation of splicing via phosphorylation of Sam68. *Nature*. 2002;420(6916):691–695.
28. Paronetto MP, Messina V, Bianchi E, et al. Sam68 regulates translation of target mRNAs in male germ cells, necessary for mouse spermatogenesis. *J Cell Biol*. 2009;185(2):235–249.
29. Najib S, Martin-Romero C, Gonzalez-Yanes C, Sánchez-Margalet V. Role of Sam68 as an adaptor protein in signal transduction. *Cell Mol Life Sci*. 2005;62(1):36–43.
30. Ramakrishnan P, Baltimore D. Sam68 is required for both NF-kappaB activation and apoptosis signaling by the TNF receptor. *Mol Cell*. 2011;43(2):167–179.
31. Chawla G, Lin CH, Han A, Shiue L, Ares M Jr, Black DL. Sam68 regulates a set of alternatively spliced exons during neurogenesis. *Mol Cell Biol*. 2009;29(1):201–213.
32. Paronetto MP, Cappellari M, Busa R, et al. Alternative splicing of the cyclin D1 proto-oncogene is regulated by the RNA-binding protein Sam68. *Cancer Res*. 2010;70(1):229–239.
33. Cheng C, Sharp PA. Regulation of CD44 alternative splicing by SRm160 and its potential role in tumor cell invasion. *Mol Cell Biol*. 2006;26(1):362–370.
34. Paronetto MP, Achsel T, Massiello A, Chalfant CE, Sette C. The RNA-binding protein Sam68 modulates the alternative splicing of Bcl-x. *J Cell Biol*. 2007;176(7):929–939.
35. Busa R, Paronetto MP, Farini D, et al. The RNA-binding protein Sam68 contributes to proliferation and survival of human prostate cancer cells. *Oncogene*. 2007;26(30):4372–4382.
36. Wang Y, Liang L, Zhang J, et al. Sam68 promotes cellular proliferation and predicts poor prognosis in esophageal squamous cell carcinoma. *Tumour Biol*. 2015;36(11):8735–8745.
37. Song L, Wang L, Li Y, et al. Sam68 up-regulation correlates with, and its down-regulation inhibits, proliferation and tumorigenicity of breast cancer cells. *J Pathol*. 2010;222(3):227–237.
38. Wang Q, Li Y, Zhou J, et al. Clinical significance of Sam68 expression in endometrial carcinoma. *Tumour Biol*. 2015;36(6):4509–4518.
39. Li Z, Yu CP, Zhong Y, et al. Sam68 expression and cytoplasmic localization is correlated with lymph node metastasis as well as prognosis in patients with early-stage cervical cancer. *Ann Oncol*. 2012;23(3):638–646.
40. Taylor SJ, Resnick RJ, Shalloway D. Sam68 exerts separable effects on cell cycle progression and apoptosis. *BMC Cell Biol*. 2004;5:5.
41. Kayani B, Hanna SA, Sewell MD, Saifuddin A, Molloy S, Briggs TW. A review of the surgical management of sacral chordoma. *Eur J Surg Oncol*. 2014;40(11):1412–1420.
42. Jemal A, Siegel R, Ward E, Murray T, Xu J, Thun MJ. Cancer statistics, 2007. *CA Cancer J Clin*. 2007;57(1):43–66.
43. Fisher CG, Saravanja DD, Dvorak MF, et al. Surgical management of primary bone tumors of the spine: validation of an approach to enhance cure and reduce local recurrence. *Spine (Phila Pa 1976)*. 2011;36(10):830–836.
44. Zhou M, Chen K, Yang H, et al. Expression of insulin-like growth factor II mRNA-binding protein 3 (IMP3) in sacral chordoma. *J Neurooncol*. 2014;116(1):77–82.
45. Han W, Ming M, He TC, He YY. Immunosuppressive cyclosporin A activates AKT in keratinocytes through PTEN suppression: implications in skin carcinogenesis. *J Biol Chem*. 2010;285(15):11369–11377.
46. Zhao X, Li Z, He B, et al. Sam68 is a novel marker for aggressive neuroblastoma. *Oncotargets Ther*. 2013;6:1751–1760.
47. Bergh P, Kindblom LG, Gunterberg B, Remotti F, Ryd W, Meis-Kindblom JM. Prognostic factors in chordoma of the sacrum and mobile spine: a study of 39 patients. *Cancer*. 2000;88(9):2122–2134.
48. Kayani B, Sewell MD, Tan KA, et al. Prognostic factors in the operative management of sacral chordomas. *World Neurosurg*. 2015;84(5):1354–1361.
49. Chen T, Boisvert FM, Bazett-Jones DP, Richard S. A role for the GSG domain in localizing Sam68 to novel nuclear structures in cancer cell lines. *Mol Biol Cell*. 1999;10(9):3015–3033.
50. Richard S, Vogel G, Huot ME, Guo T, Muller WJ, Lukong KE. Sam68 haploinsufficiency delays onset of mammary tumorigenesis and metastasis. *Oncogene*. 2008;27(4):548–556.
51. Zhang Z, Yu C, Li Y, Jiang L, Zhou F. Utility of SAM68 in the progression and prognosis for bladder cancer. *BMC Cancer*. 2015;15:364.

OncoTargets and Therapy

Dovepress

Publish your work in this journal

OncoTargets and Therapy is an international, peer-reviewed, open access journal focusing on the pathological basis of all cancers, potential targets for therapy and treatment protocols employed to improve the management of cancer patients. The journal also focuses on the impact of management programs and new therapeutic agents and protocols on

patient perspectives such as quality of life, adherence and satisfaction. The manuscript management system is completely online and includes a very quick and fair peer-review system, which is all easy to use. Visit <http://www.dovepress.com/testimonials.php> to read real quotes from published authors.

Submit your manuscript here: <http://www.dovepress.com/oncotargets-and-therapy-journal>