

ARTICLE OPEN

Identification of an immune gene expression signature associated with favorable clinical features in Treg-enriched patient tumor samples

Kevin B. Givechian¹, Kamil Wnuk¹, Chad Garner¹, Stephen Benz¹, Hermes Garban², Shahrooz Rabizadeh^{1,2}, Kayvan Niazi² and Patrick Soon-Shiong^{1,2}

Immune heterogeneity within the tumor microenvironment undoubtedly adds several layers of complexity to our understanding of drug sensitivity and patient prognosis across various cancer types. Within the tumor microenvironment, immunogenicity is a favorable clinical feature in part driven by the antitumor activity of CD8⁺ T cells. However, tumors often inhibit this antitumor activity by exploiting the suppressive function of regulatory T cells (Tregs), thus suppressing the adaptive immune response. Despite the seemingly intuitive immunosuppressive biology of Tregs, prognostic studies have produced contradictory results regarding the relationship between Treg enrichment and survival. We therefore analyzed RNA-seq data of Treg-enriched tumor samples to derive a pan-cancer gene signature able to help reconcile the inconsistent results of Treg studies, by better understanding the variable clinical association of Tregs across alternative tumor contexts. We show that increased expression of a 32-gene signature in Treg-enriched tumor samples ($n = 135$) is able to distinguish a cohort of patients associated with chemosensitivity and overall survival. This cohort is also enriched for CD8⁺ T cell abundance, as well as the antitumor M1 macrophage subtype. With a subsequent validation in a larger TCGA pool of Treg-enriched patients ($n = 626$), our results reveal a gene signature able to produce unsupervised clusters of Treg-enriched patients, with one cluster of patients uniquely representative of an immunogenic tumor microenvironment. Ultimately, these results support the proposed gene signature as a putative biomarker to identify certain Treg-enriched patients with immunogenic tumors that are more likely to be associated with features of favorable clinical outcome.

npj Genomic Medicine (2018)3:14; doi:10.1038/s41525-018-0054-7

INTRODUCTION

Studies of the tumor microenvironment have surfaced promising avenues of exploration to better understand the clinical relevance of T cell immunobiology. Regulatory T cells (Tregs) have keenly emerged in light of their ability to inhibit the adaptive immune response and provide a mechanism of immune escape for cancer cells within the tumor microenvironment across various cancer types.^{1–4} However, the myriad of studies exploring the clinical relevance of intratumoral Treg abundance has produced controversial results to date,² with some studies finding a poor prognosis associated with Treg infiltration,^{1,5,6} and others suggesting a favorable Treg-associated prognosis.^{6–12} Accordingly, recent efforts to account for these polarized clinical results have undermined the notion that FOXP3⁺ Tregs invariably suppress tumor immunity.^{2,13,14} Consequently, conducting additional unbiased analyses has been supported to better understand the clinical associations of Tregs across different microenvironmental contexts and tumor types.^{2,14}

Using multiple gene markers together to accurately identify Tregs in cancer, such as FOXP3 + BLIMP1¹⁵ or FOXP3 + CTLA4,¹⁶ has demonstrated a more thorough evaluation of Tregs in recent years.^{13,15} Our current study also uses multiple markers to define Tregs enrichment rather than FOXP3 expression alone,¹⁷ but our primary interest was rather to examine the global

microenvironmental context through which Tregs may be associated with differing clinical outcomes such as chemosensitivity and overall survival (OS). Moreover, we investigated whether these outcomes may be linked to CD8⁺ T cell abundance in pursuit of deriving a gene signature able to distinguish immunogenic Treg-enriched tumor samples. We hypothesized that a set of highly variable genes differentially expressed by Tregs (amongst 22 immune cell types)¹⁸ would be able to produce distinct patient clusters from a pool of tumor samples that were all selected due to their enrichment for Tregs.¹⁷ We implemented a pan-cancer approach to identify a favorable immunogenic signature based on immunological expression. In the current study, we present a 32-gene signature that is able to distinguish a 'hot' tumor phenotype associated with chemosensitivity, OS, and CD8⁺ T cell activation/abundance amongst a pool of 135 Treg-enriched patient tumor samples. We validated our 32-gene signature by confirming associations with OS, and CD8⁺ T cell activity/abundance in a larger pool of 626 patients. In addition, we overlapped an independently discovered set of genes suggested to be essential for CD8⁺T cell function for immune checkpoint blockade therapy and assessed the concordance of the clusters produced by each gene set independently.¹⁹ Together, we conducted a comprehensive expression analysis of a 32-gene

¹NantOmics LLC, Culver City, CA 90232, USA and ²NantBioscience, Inc. | NantWorks, Culver City, CA 90232, USA
Correspondence: Kevin B. Givechian (Kevin.Givechian@nantomics.com)

Received: 12 January 2018 Revised: 1 May 2018 Accepted: 10 May 2018
Published online: 13 June 2018

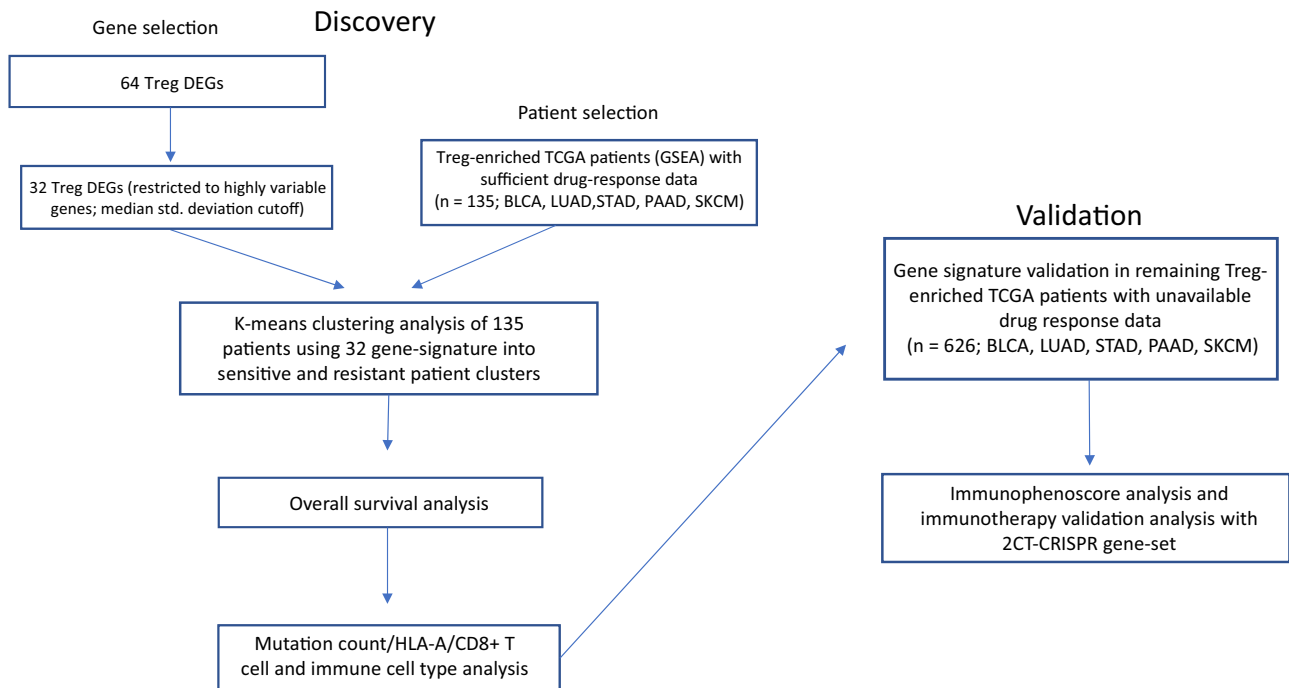


Fig. 1 Experimental workflow of 32-gene signature expression analysis in discovery and validation cohorts of Treg-enriched cancer patients

signature and observed its association with favorable clinical features of tumor immunology.

RESULTS

Unsupervised clustering using the 32 Treg DEGs

The experimental workflow is shown in Fig. 1. Patient tumor samples analyzed in the current study were restricted to those that were (1) Treg-enriched ($q < 0.05$) and (2) possessed sufficient clinical drug response labels ($n_{\text{Total}} = 135$) (Fig. 1).¹⁷ Using only the 32 highly variable genes differentially expressed by Tregs,¹⁸ k-means clustering was able to produce two distinct clusters of patient tumor samples ($P = 0.0007$, $\chi^2 = 11.58$; Fig. 2a). Cluster1 ($n = 57$) was enriched for chemosensitivity (70.17% of patients were sensitive to drugs prescribed), while cluster2 ($n = 78$) was enriched for chemoresistance (only 40.74% were clinically sensitive to drugs prescribed).

Overall, patient cancer type was not associated with cluster ($P > 0.05$, $\chi^2 = 7.69$; Supp. Table 1). Nevertheless, when the 32-gene signature was used to cluster patients of each cancer type individually, clusters enriched for sensitivity to treatment were observed in both SKCM and STAD ($P = 0.0450$, $\chi^2 = 4.022$ and $P = 0.0007$, $\chi^2 = 11.53$; Fig. 2b, c). Proportional significance was not observed when identical clustering methods were applied independently to LUAD, PAAD, and BLCA ($P = 0.614$, $P = 0.948$, and $P = 0.065$, respectively; Fig. 2d-f).

Cluster1 patients are associated with favorable OS

To determine whether the cluster1 enrichment for drug-sensitivity was reflected in survival, overall survival (OS) survival analysis was performed (Fig. 3). Cluster1 median OS was observed to be 29.4 months, while cluster2 median OS was observed shorter at 21.0 months, demonstrating an 8.4-month median survival difference. As hypothesized, cluster1 was significantly associated with favorable patient OS in comparison to cluster2 ($P = 0.00084$, HR = 0.40[0.24–0.70]; Fig. 3a).

While cluster1 was enriched for patients who were sensitive to treatment, there was a handful of ‘resistant’ patients that were of

further interest in this cluster ($n = 17$). To examine these patients further, we hypothesized that despite clinical labels for initial drug-response, patient OS would be significantly longer for an immunologically active ‘hotter’ tumor than it would be for a less immunologically active ‘colder’ tumor.¹⁹ Therefore, we sought to determine whether ‘resistant’ patients in cluster1 differed in OS as compared to the ‘resistant’ patients of cluster2 ($n = 45$). After confirming that neither resistant patient cohort was enriched for a certain cancer type ($P > 0.05$; Supp. Table 2), we analyzed patient OS between each resistant cohort. Strikingly, the median survival duration of the resistant patients in cluster1 was more than twice that of the resistant patients in cluster2 (49.0 months vs 18.7 months, $P = 0.0011$, HR = 0.30[0.14–0.66]; Fig. 3b).

CD8+ T-cell activity/abundance is enriched in cluster1 patient tumor samples

To examine a putative explanation that may corroborate the observed clinical outcome parameters for the 32-gene signature (e.g., chemosensitivity and OS), we examined the distributions of mutation count per cluster and CD8+ T-cell biomarker expression, as mutation count and CD8/HLA-A expression have previously been observed in association with drug response and survival via neoantigen production and cytotoxic lymphocyte activation, respectively.^{20,21} To this end, and in line with this previous work, neither total mutation count nor non-synonymous mutation count was associated with cluster1 ($P = 0.334$ and $P = 0.426$; Supp. Figure 1A-B, respectively). However, CD8A/B, HLA-A, and PRF1 expressions were significantly elevated in patient tumor samples from cluster1 ($P = 2.24e-19$, $P = 2.14e-18$, $P = 1.16e-4$, and $P = 2.42e-10$, respectively; Fig. 4a-d).

In order to suggest with further confidence at the level of immune cell type that CD8+ T-cells were more abundant in tumor samples from cluster1 patients, we applied a gene expression deconvolution framework to interpret the immunologically heterogeneous RNA-seq signals of each patient tumor sample.¹⁸ In line with our observations of elevated CD8A/B gene expression in cluster1, CD8+ T-cells mean abundance was significantly higher

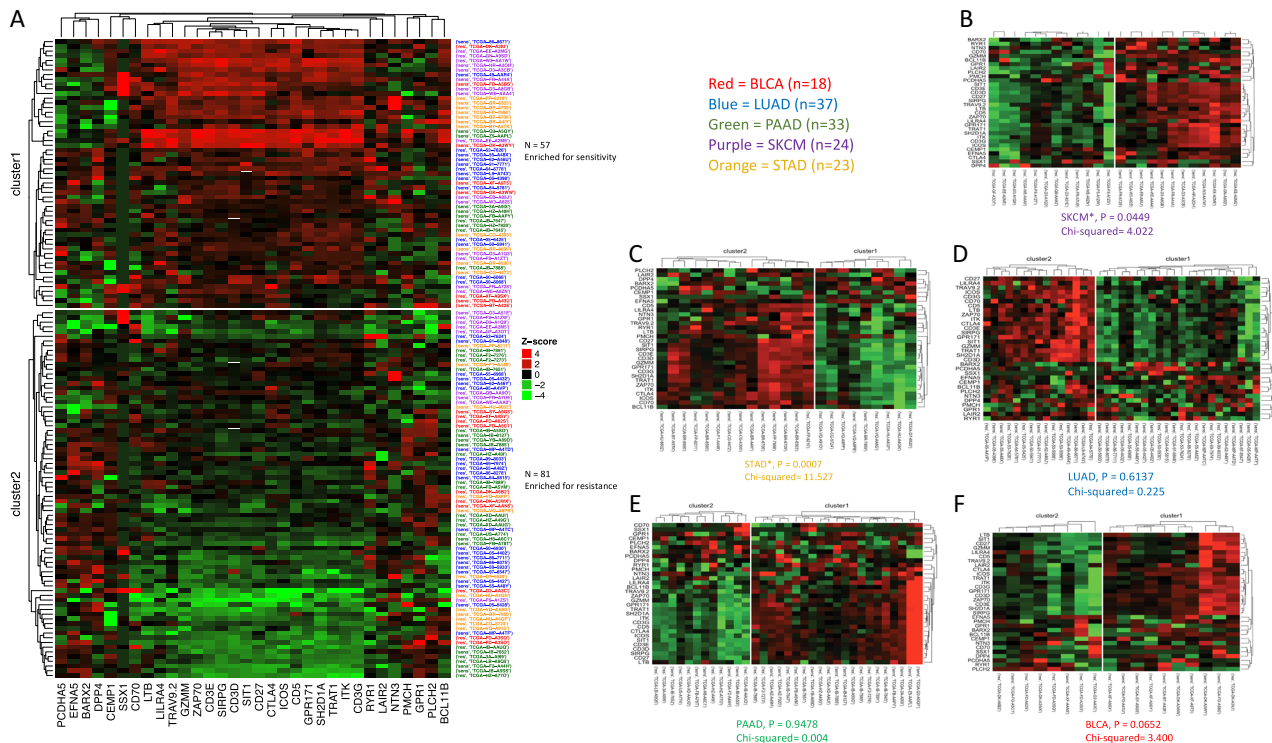


Fig. 2 Unsupervised k-means clusters of Treg-enriched cancer patients from patient gene expressions of 32-gene signature in the discovery cohort ($n = 135$). **a** Clusters obtained from k-means clustering analysis ($k = 2$), with cluster1 ($n = 57$, high/red/top cluster) enriched for treatment sensitivity ($P = 0.0007$, $\chi^2 = 11.58$) compared to cluster2 ($n = 78$, low/green/bottom cluster), and neither cluster confounded with tumor anatomical location ($P > 0.05$; see Supp. Table 1-2). Row labels correspond to sensitivity marker ('sens' = Partial Response or Complete Response, 'res' = Stable Disease or Clinical Progressive Disease) and TCGA patient barcodes. Row label colors correspond to 32-gene cancer type (18 BLCA [red], 37 LUAD [blue], 33 PAAD [green], 24 SKCM [purple], 23 STAD [orange]). **b** k-means clusters produced from 32-gene signature in SKCM ($P = 0.0450$, $\chi^2 = 4.022$). **c** k-means clusters produced from 32-gene signature in STAD ($P = 0.0007$, $\chi^2 = 11.53$). **d** k-means clusters produced from 32-gene signature in LUAD ($P = 0.6137$, $\chi^2 = 0.225$). **e** k-means clusters produced from 32-gene signature in PAAD ($P = 0.9478$, $\chi^2 = 0.004$). **f** k-means clusters produced from 32-gene signature in BLCA ($P = 0.0652$, $\chi^2 = 3.400$)

in cluster1 patient tumor samples than that of cluster2 (15.3% vs 7.4% of total immune cells, $P = 1.00e-7$; Fig. 4e and Table 1).

In parallel, continuing the analysis of cluster1 chemoresistant patients vs cluster2 chemoresistant patients, we examined mutation counts and expression of CD8A/B and HLA-A, as well as immune cell type abundances between these two resistant patient sub-cohorts. Similar to the previous broader cluster analysis, mutation count was not associated with chemoresistant patient cohort ($P = 0.334$ and $P = 0.190$; Supp. Figure 1C-D, respectively). Moreover, in line with our OS observations of these patients, CD8A/B, HLA-A, and PRF1 expressions were higher in resistant patient tumor samples from cluster1 than for those from cluster2 ($P = 9.0e-6$, $P = 2.0e-6$, $P = 0.038$, and $P = 0.0008$ respectively; Fig. 4f-i). Furthermore, in resistant patients, CD8+ T-cells mean abundance was higher in cluster1 resistant patient tumor samples than that of cluster2 resistant patients (14.5% vs 7.6%, $P = 0.013$; Fig. 4j, Supp. Table 3).

Patient tumor sample DNA accessibility analysis

DNA accessibility refers to whether a certain region of DNA is accessible to regulatory molecules and proteins such as transcription factors, and recent work has revealed the importance of investigating the accessibility of regulatory regions during immune events such as CD8+ T cell exhaustion, as accessible regions possess high potential to be expressed and or accessed by transcriptional machinery that may influence an immune response.²² Specifically, recent work has demonstrated the clinical impact accessibility may have in an immune response in both a mouse model of melanoma via impaired transcriptional access to

interferon regulatory factors (IRFs),²³ and in renal carcinoma through LOF mutation in the chromatin regulator PBAF.²⁴ Recent studies such as these that proposed the relevance of DNA accessibility in the immune response encouraged us to examine potential differences in DNA accessibility between cluster1 and cluster2. Fortunately (due to the inherently high dimensional data of chromatin organization), deep learning models have been trained on DNase-seq²⁵ and recently extended to incorporate RNA-seq data to predict accessibility in a variety of cell types and tumor samples.²⁶ We therefore sought to explore whether cluster1 patients and cluster2 patients may differ in DNA site accessibility predictions across 86,057 promoter and promoter flank sites across the human genome. Interestingly, we observed sites within 14 genes that were predicted to be enriched for accessibility in cluster2 patients (acceptable $P < 5.8e-7$; Supplemental Fig. 2A).

Of particular interest, we observed a site within TRAF3IP1 to be the most differentially accessible site of all 86,057 sites between clusters ($P < 3.86e-9$; Supplemental Fig. 2C). TRAF3IP1 has been shown to negatively regulate the innate Type 1 IFN response,²⁷ and indeed, TRAF3IP1 expression was elevated in cluster2 patients who corresponded to the less immunologically active cohort ($P < 3.06e-4$; Supplemental Fig. 2B). Conversely, when investigating the pro-inflammatory immune marker IFNG,^{28,29} we observed significant gene expression elevation in cluster1 patients ($P < 1.78e-7$; Supplemental Fig. 2C). While of clear need for experimental validation, this suggests for the first time that TRAF3IP1 may be an unfavorable biomarker perhaps related to the anti-tumor immune response at least in Treg-enriched patient tumor samples.

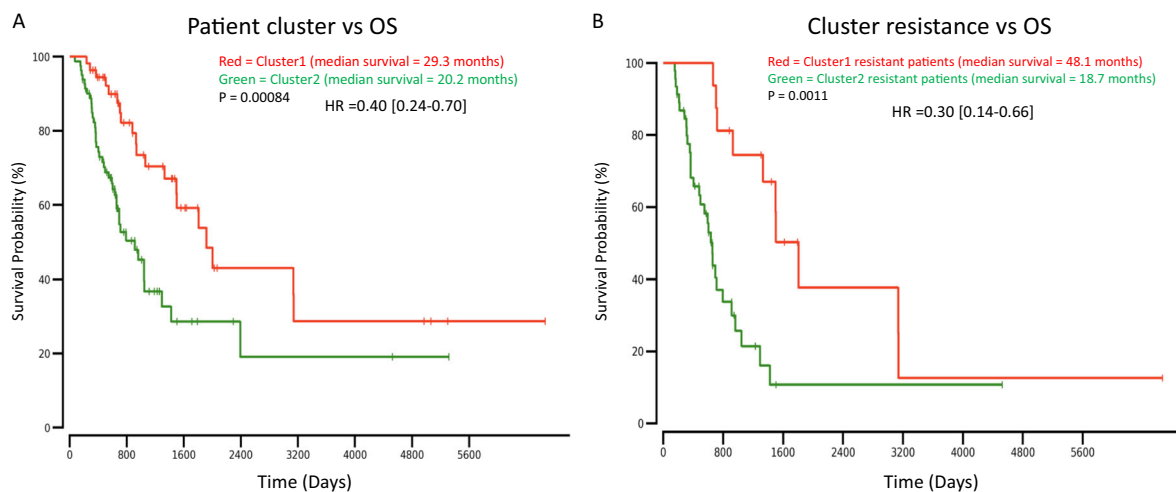


Fig. 3 Overall survival plots/Cox proportional hazard regression analysis results. **a** OS analysis between cluster1 patients ($n = 57$, red/top line) and cluster2 patients ($n = 78$, green/bottom line), $P = 0.00084$, $HR = 0.40[0.24-0.70]$. **b** OS analysis between resistant patients from cluster1 ($n = 17$, red/top line) and resistant patients from cluster2 ($n = 45$, green/bottom line), $P = 0.0011$, $HR = 0.30[0.14-0.66]$

Gene signature analysis in validation cohort

In order to confirm that the application of this gene signature was not unique to the initial subset of patients selected, and that it extends to all Treg-enriched patients from the cohorts studied, we applied our 32-gene signature to the remaining Treg-enriched patients. For analytical consistency, these patients were those of the same cancer types (BLCA, LUAD, PAAD, SKCM, STAD) that were Treg-enriched ($q < 0.05$). However, these patients did not have available drug response data to assess treatment sensitivity.

Unsupervised clustering produced two clusters ($n_{\text{cluster1}} = 332$; $n_{\text{cluster2}} = 294$; Fig. 5a). We observed that cluster1 patient tumor samples possessed significantly higher levels of CD8A, CD8B, HLA-A, and PRF1 ($P < 4.19e-79$, $P < 1.59e-69$, $P < 2.96e-17$, and $P < 5.20e-58$; Fig. 5b-e, respectively). We also elaborated upon these CD8+ T cell activity markers by showing cluster1 patients possessed higher abundances of CD8+ T-cells than cluster2 patients (13.5% vs 6.90%; $P = 2.15e-21$; Fig. 5f and Supp. Table 4).

Although clinical drug response data was not available for these 636 patients, we examined patient OS between the clusters produced from the 32-gene signature (Fig. 5a). Indeed, higher expression of the gene signature was associated with OS in this larger dataset. The median OS duration for the higher expressing cluster1 patients was significantly longer than that of the cluster2 patients ($P = 1.8e-4$; Fig. 5g), which was in line with the OS results previously discussed (Fig. 3a).

Patient immunophenoscore (IPS) and immunotherapy gene set concordance

Recent work has shown the utility of the IPS to predict response to immune checkpoint blockade in melanoma patient tumors based on higher pre-existing immunogenic potential.¹⁷ We reasoned that if cluster1 was indeed representative of a more immunogenic phenotype, then cluster1 tumor samples should too display an elevated IPS, which has been clinically validated for immunotherapeutic response.¹⁷ Analysis of patient IPS between cluster1 and cluster2 revealed significant elevation in the general IPS of cluster1 ($P = 0.019$). In addition, the IPS-PD1, IPS-CTLA4, and IPS-PD1 + CTLA4 scores were significantly elevated in cluster1 tumor samples ($P = 3.68e-10$, $P = 6.00e-6$, and $5.52e-12$, respectively; Fig. 6a). These three scores were designed to be assessed for patients with the potential to be administered checkpoint blockade therapy (e.g., nivolumab, ipilimumab), who possessed elevated expression of PD-1 and or CTLA-4.¹⁷ Indeed, cluster1 patients possessed significantly higher PD-1 and CTLA-4 gene expression

than did cluster2 patients ($P < 8.34e-15$ and $P < 1.83e-13$; Fig. 6b, c, respectively).

In order to lend further support to our 32-gene signature, we measured the significance of and concordance with another gene set recently suggested to be essential for effector CD8+ T cell activity for immunotherapy.¹⁹ This gene set was identified by a 2CT-CRISPR assay as candidate genes essential for effector CD8+ T cell function and were correlated with cytolytic activity across almost all TCGA cancer types. When we applied k-means clustering, this immunotherapy gene set achieved significance in terms of enrichment for chemosensitive tumor samples ($P = 0.015$; Fig. 6d), although this was less significant than that of our 32-gene signature ($P = 0.0007$; Fig. 6d). More importantly, however, the concordance or agreement between patient tumor sample clustering by each gene set independently was deemed 'good' according to previously established concordance metrics (Cohen's kappa = 0.64; Fig. 6d),^{30,31} suggesting that our 32-gene signature was able to produce patient tumor sample clusters in concert with those experimentally derived from an immunotherapy gene set important for CD8+ T cell function.¹⁹ The lack of very high correlation between our 32-gene signature and the 2CT-CRISPR gene set could be explained by the fact that our gene set was fundamentally derived based on a cohort of patients that were all Treg-enriched, whereas in the 2CT-CRISPR study, Treg enrichment analysis was not the main focus.¹⁹

Moreover, and in line with our k-means clustering results, we observed that cluster1 patients possessed significantly elevated expression for 12 out of 18 genes identified by the 2CT-CRISPR assay system (acceptable $P < 0.003$; Fig. 6e). Interestingly, pathway network activation revealed cluster1 patients to possess enriched immune pathway activation via elevated T-cell receptor and Co-stimulatory signaling, TCR signaling pathway, and the inflammatory response pathway ($P < 0.048$, $P < 0.048$, and $P < 0.043$, respectively; Supp. Figure 3A), and these pathways were not enriched in cluster2 patients (Supp. Figure 3B). Together these results lend support to our gene signature as a clinically relevant gene expression signature of a 'hot' immunogenic tumor in Treg-enriched patients who may be more likely to respond to checkpoint blockade therapies targeting PD-1 and or CTLA-4.

DISCUSSION

Our study examined the clinical potential of a 32-gene expression signature to classify patients and their association with chemosensitivity, OS, and CD8+ T cell activation/abundance. The genes chosen to comprise this signature were differentially expressed by

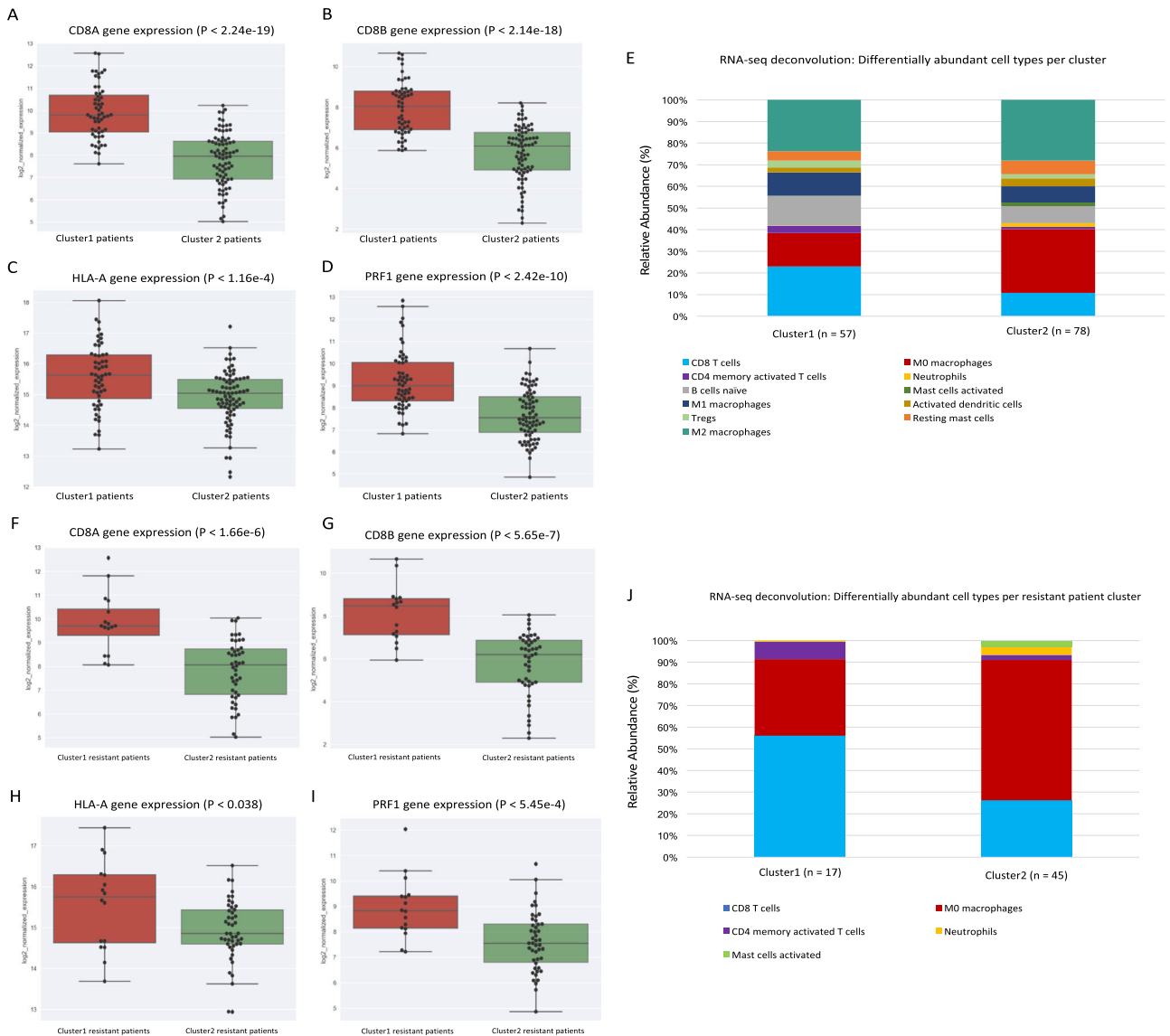


Fig. 4 CD8+ T cell activity and immune cell abundance analysis between clusters. K-means clusters derived from 32-gene signature expression versus CD8+ T cell activity marker expression for **a** CD8A, **b** CD8B, **c** HLA-A, and **d** PRF1 ($P = 2.24e-19$, $P = 2.14e-18$, $P = 1.16e-4$, and $P = 2.42e-10$, respectively; Fig. 4a–d). **e** CIBERSORT RNA-seq deconvolution results for relative immune cell type abundances between patient tumor samples from k-means clusters (only differentially represented cell types ($P < 0.05$) were selected for presentation/visualization purposes; see Table 1 for absolute cell type abundances). Treatment-resistant patients extracted from k-means clusters derived from 32-gene signature expression vs CD8+ T cell activity marker expression for **f** CD8A, **g** CD8B, **h** HLA-A, and **i** PRF1 ($P = 1.66e-6$, $P = 5.65e-7$, $P = 0.038$, and $P = 5.45e-4$, respectively; Fig. 4f–i). **j** CIBERSORT RNA-seq deconvolution results for relative immune cell type abundances between resistant patient tumor samples from k-means clusters (only differentially represented cell types ($P < 0.05$) were selected for presentation/visualization purposes; see Supp. Table 3 for absolute cell type abundances)

Tregs¹⁸ and were highly variable across Treg-enriched patient tumor samples.

We observed that the variation of the 32-gene signature to corresponded to the ‘hot’ vs ‘cold’ tumor paradigm, in which a ‘hot’ tumor with a higher level of tumor infiltrating lymphocytes (TILs) is associated with favorable clinical outcomes.^{12,32–36} From our results, it is worth noting that in addition to an immunogenic tumor microenvironment, the tumor gene signature we investigated may be associated with a previously observed molecular phenotype of Tregs associated with diminished suppressive function.³⁷

Despite the proportional significance achieved by the number of chemosensitive patients between cluster1 and cluster2, there remained 17 chemoresistant patients in cluster1. To interrogate these patients further, we conducted a series of parallel analyses between these 17 patients and the 45 resistant patients of

cluster2. Strikingly, we observed that although labeled as chemoresistant, the cluster1 resistant patients likely possessed ‘hotter’, more immunogenic tumors, and thus survived longer in terms of OS. Specifically, we observed favorable tumor infiltrating lymphocyte expression in these 17 tumor samples from our deconvolution analysis (e.g., more CD8+ T cells, less M0 macrophages) and augmented CD8+ T cell activation expression (e.g., CD8A/B, PRF1, HLA-A). Together, these clinical parameters agreed with associated patient OS findings. Our results suggest that at least in a small proportion of Treg-enriched patients, the ‘heat’ of a tumor classified by our 32-gene signature may complement the clinical parameter of chemosensitivity, and that the chemoresistant patients we studied may have been promising candidates for immunotherapy. It is also interesting to note that while checkpoint marker expression (e.g., PD-1 and CTLA-4) was

Table 1. RNA-seq tumor sample deconvolution to immune cell type abundances (absolute value means) between clusters derived from 32-gene signature

Immune cell type	cluster1 mean abundances (n = 57)	cluster2 mean abundances (n = 78)	t-statistic	P-value
T cells CD8	0.153530	0.073861	5.270214	0.000001
Macrophages M0	0.108029	0.199764	-4.258066	0.000038
T cells CD4 memory activated	0.021997	0.006819	4.209816	0.000069
Neutrophils	0.001244	0.010078	-3.231105	0.001772
Macrophages M1	0.072440	0.048957	2.745808	0.007010
B cells naive	0.103911	0.059839	2.372021	0.019814
Mast cells activated	0.001338	0.009605	-2.288763	0.024394
Dendritic cells activated	0.014635	0.027883	-2.245423	0.026440
T cells regulatory (Tregs)	0.020736	0.011808	2.249714	0.026875
Macrophages M2	0.157614	0.192663	-2.125468	0.035405
Mast cells resting	0.030808	0.044771	-2.089000	0.038608
NK cells activated	0.006706	0.011616	-1.460647	0.146820
T cells follicular helper	0.045859	0.036308	1.400419	0.163802
T cells CD4 naive	0.007653	0.000103	1.341638	0.185125
Monocytes	0.026926	0.038978	-1.303338	0.195072
Plasma cells	0.038825	0.050363	-1.160674	0.247865
B cells memory	0.038502	0.023567	1.160351	0.248782
Dendritic cells resting	0.005879	0.009324	-1.080562	0.281837
NK cells resting	0.034977	0.033187	0.325962	0.745004
T cells CD4 memory resting	0.152862	0.149396	0.207072	0.836325
Eosinophils	0.000260	0.000223	0.159053	0.873866

highly elevated in cluster1 patients, PD-L1 expression was only marginally elevated ($P < 3.6e-2$, data not shown). This difference in significance between PD-1 and PD-L1 expression can perhaps be explained by the initial Treg-enrichment filtering.

When differential DNA accessibility was examined between cluster1 patients and cluster2 patients, a promoter flank site within the TRAF3IP1 gene was predicted to be accessible in almost all cluster2 patients and inaccessible in almost all cluster1 patients. TRAF3IP1 is a protein that interacts with TRAF3 and is has been observed to inhibit the innate type I IFN response.²⁷ TRAF3IP1 was also higher expressed in cluster2 patients who had lower expression of IFNG and anti-tumor immune activity, suggesting a potential role for TRAF3IP1 regulation in inhibiting the anti-tumor immune response. Furthermore, recent work demonstrated differential accessibility between immune susceptible tumors and immune resistant tumors. Interestingly, the differentially accessible sites within these tumors were enriched for IRF motifs and associated with IFN-regulated genes.²³ Considering our results, and the ability of DNA accessibility to play a role in the IFN response in vivo, it is possible that in tumor samples wherein TRAF3IP1 is more accessible, its increased expression may help inhibit the anti-tumor immune response at least partly through mitigating IFN signaling.²⁷ This mechanism, however, would require a thorough experimental validation to hold preliminary clinical relevance. Additionally, it is worth noting that the greatest visible difference in accessibility was specifically between melanoma patients of cluster1 and melanoma patients of cluster2, which is also in line with previous work that demonstrated accessibility playing a role in CD8+ T cell immunoreactivity within a melanoma model.²² Furthermore, recent work in the B16 melanoma model has argued for the rational of coupling HDAC inhibitors to checkpoint blockade therapies to enhance immunotherapy efficacy.³⁸ This may further propose a clinical relevance for DNA accessibility to be explored in future studies.

While a literature search to biologically explain each gene of the 32-gene signature was not part of the current study, one gene of

that particularly struck interest was lymphotoxin beta (LTB), which was elevated in cluster1 patient tumor samples. Interestingly, LTB has been shown to specifically stimulate Tregs to migrate from the tissue to the lymph nodes via afferent lymphatics.³⁹ This therefore may at least partly attribute the positive clinical associations of cluster1 patients to elevated LTB expression, which may be directing immunosuppressive Tregs away from tumor tissue sites, thus unleashing the antitumor response within cluster1 tumor samples. Clearly, this speculation would require further in vivo tumor studies to be confirmed.

In order to obtain sufficient sample sizes, we used a pan-cancer approach to interrogate differences between the clusters produced by the unsupervised k-means method. We confirmed that neither cluster was enriched for any single cancer type, which may have otherwise surfaced the tumor tissue type as a confounding variable. We additionally pursued an extensive analysis to deconvolute the heterogeneity of the tumor, showing that CD8+ T cell activity was likely enriched in cluster1 patient tumor samples and that chemosensitivity was seemingly linked to the immunocompetence of the 'hot' tumors.⁴⁰ To this end, we observed CD8+ T cell tumor abundance to be associated with favorable patient prognosis.⁴⁰⁻⁴⁴ Of note, the pro-inflammatory IFN γ , which is a marker of CD8+ T cell mediated tumor regression and TIL abundance,⁴⁵ was also significantly elevated in cluster1 samples. Although all patient tumor samples of cluster1 were also enriched for Treg expression, cluster1 possessed a higher mean CD8+ T cell to Treg ratio than cluster2 (data not shown). This result, which is based on the expression of our 32-gene signature, is also in line with previous clinical findings pertaining to the CD8+ T cell to Treg ratio in the tumor microenvironment.^{40,46} Furthermore, we observed that FOXP3 expression was significantly elevated in the clinically favorable cluster of patient tumor samples (cluster1, $P < 5.41e-14$; data not shown), which is also in accord with previous FOXP3 related studies.⁴⁷⁻⁵¹ Of note, two specific tumor types were distinguished when analyzed independently—stomach adenocarcinoma (STAD), and skin cutaneous melanoma (SKCM)—despite

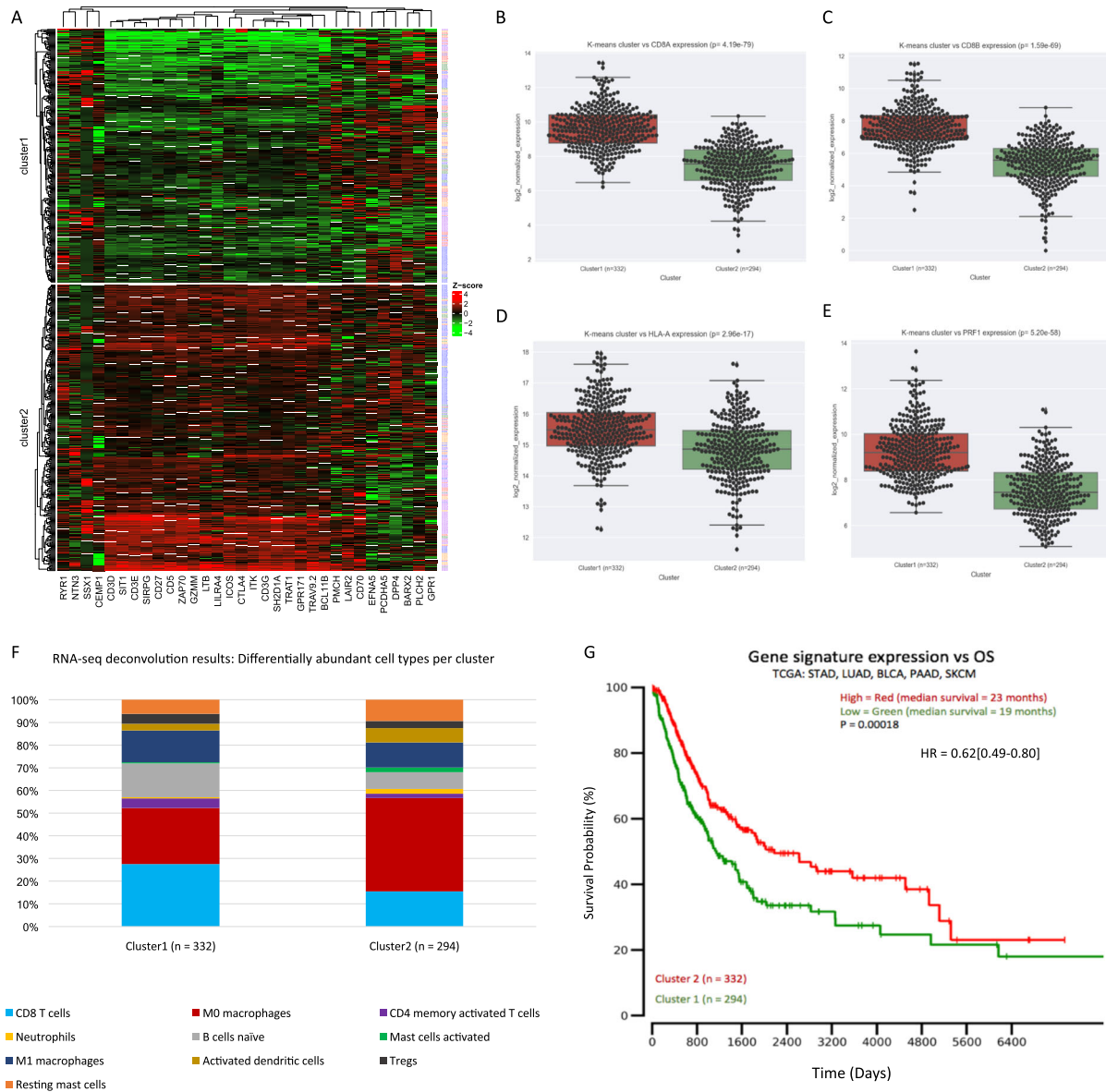


Fig. 5 Gene signature analysis in TCGA validation dataset ($n = 626$). **a** 32-gene signature expression k-means clustering produces two clusters ($n_{\text{cluster1}} = 332$, $n_{\text{cluster2}} = 294$). Clusters derived from 32-gene signature expression in TCGA validation data versus CD8+ T cell activity marker expression for **b** CD8A, **c** CD8B, **d** HLA-A, and **e** PRF1 ($P = 4.19\text{e-}79$, $P = 1.59\text{e-}69$, $P = 2.96\text{e-}17$, and $P = 5.20\text{e-}58$, respectively; Fig. 4b-e). **f** CIBERSORT RNA-seq deconvolution results for relative immune cell type abundances between patient tumor samples from k-means clusters (only differentially represented cell types ($P < 0.05$) were selected for presentation/visualization purposes; see Supp. Table 4 for absolute cell type abundances). **g** Overall survival plot/Cox proportional hazard regression analysis results between cluster1 patients (red/top line) and cluster2 patients (green/bottom line), $P = 0.00018$, HR = 0.40[0.49–0.80]

using a pan-cancer approach. The observation of melanoma could be explained by its relatively high association with immune activity compared other tumor types, and its robust utility as an immunology model amongst other tumor tissue types.⁵² Stomach cancer has previously been shown to embody a favorable prognostic effect of high FOXP3 expression in the context of Tregs, correlated with a favorable microenvironment.⁵³ Indeed, compared to the treatment-resistant cluster within STAD, the treatment sensitive cluster also showed higher FOXP3 expression ($P = 0.006$, data not shown), suggesting a potential utility of the proposed immune biomarker in future studies of STAD.

While we specifically interrogated CD8+ T cell abundance/activation markers, we also observed differential activation of tumor associated macrophages (TAMs), with cluster1 patients enriched for M1 macrophage abundance. The M1 subtype, which

is associated with higher levels of IL-1, TNF α , IL-12, and CXCL12, is associated with the inflammatory, anti-tumor response.^{54–56} Our observation was therefore in line with previous work, suggesting a complementary interaction between M1 macrophages and CD8+ T cells to ameliorate pro-tumorigenic activity within cluster1 patient tumor samples. Cluster2 accordingly possessed a higher abundance of M0 macrophages, potentially suggesting a larger undifferentiated premature pool of monocytes in these patients as opposed to those of cluster1. Our pathway network activation analysis from a more holistic perspective also revealed a shift towards activated TCR signaling and the inflammatory response in cluster1 patients but not in cluster2 patients. Together, we observed that our 32-gene feature set was able to distinguish a drug-sensitive cohort (cluster1) with higher antitumor immune activity perhaps in part via the previously proposed interplay

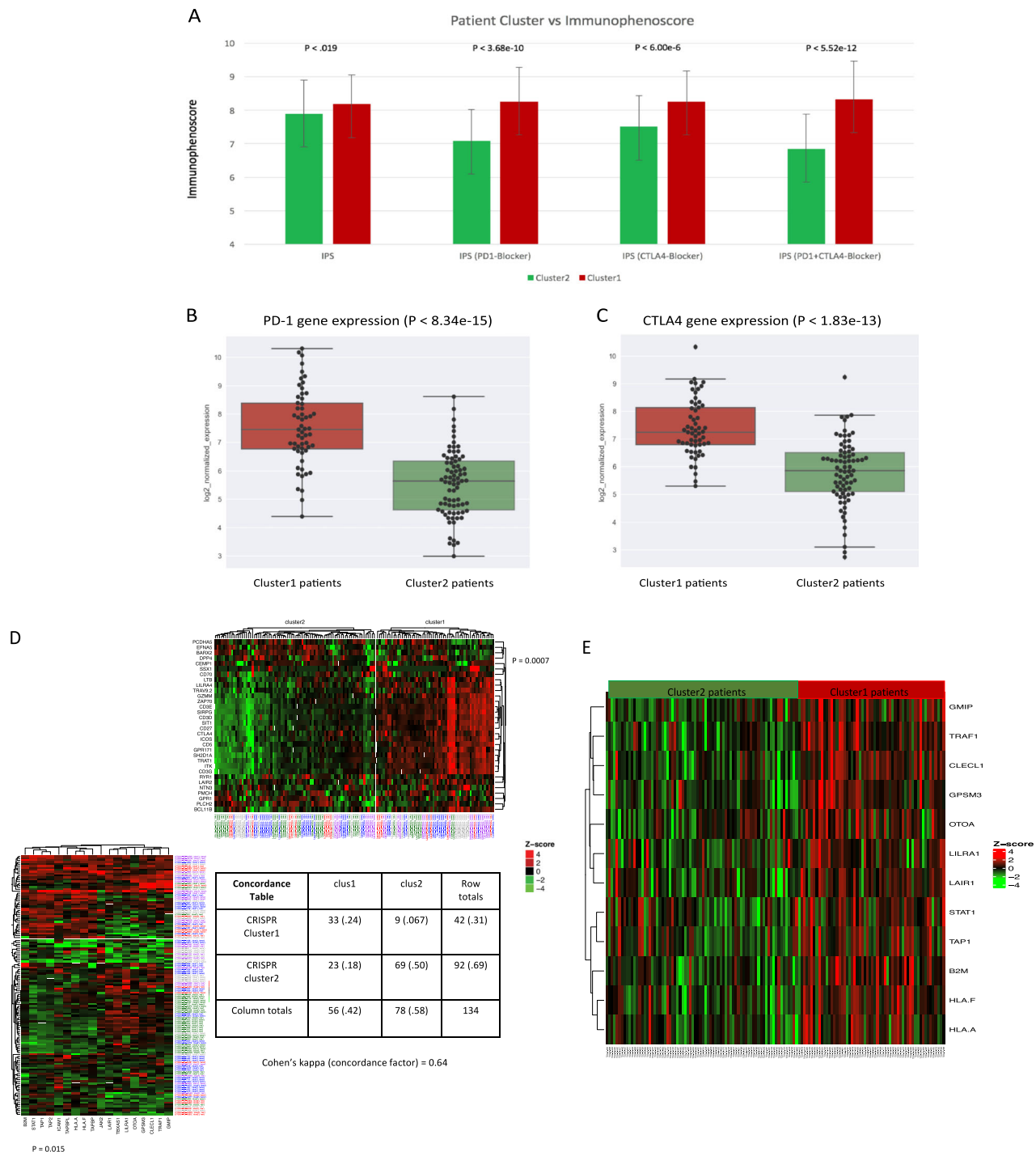


Fig. 6 Patient immunophenoscore and immunotherapy gene set analysis. **a** Mean Immunophenoscores represented per cluster derived as described in methods (bar whiskers represent standard deviations). Normalized gene expression plots between cluster1 and cluster2 patients for **b** PD-1 ($P < 8.34e-15$) and **c** CTLA-4 ($P < 1.83e-13$). **d** K-means clusters produced by each the immunotherapy gene set (19) and our gene set, with both gene sets showing enrichment for chemosensitive tumor samples ($P = 0.015$, and $P = 0.0007$, respectively). Concordance table showing similar unsupervised clusters are produced with 'good' concordance (Cohen's kappa = 0.64). **e** cluster1 patients possessed significantly elevated expression for 12 out of 18 genes identified by the 2CT-CRISPR assay system (acceptable $P < 0.003$)

between TAMs and CD8+ T cells.⁵⁷ It is also interesting to note that the cluster2 patient pool (which was enriched for chemoresistance) uniquely possessed upregulated pathway activation for DNA damage response and nucleotide metabolism ($P < 0.037$ and $P < 0.026$, respectively). In agreement with previous work, these molecular processes have been observed to play a role in

chemoresistance and unfavorable survival likely by ameliorating the intended damage of chemotherapeutic compounds.^{58–62}

There are several limitations to our study. First, our 32-gene signature is specific is to Treg-enriched patient tumor samples as determined by the previously described gene set enrichment analysis (GSEA) methods.¹⁷ In addition, although the variability of

the 32 genes was strongly associated with patient survival and the well-characterized favorable immune determinants of the tumor in this study (e.g., CD8+ T cell, PRF1 and CD8A/B), it is important to be aware of the possibility that tumor heterogeneity may still at least partly influence the variability of gene transcript abundance. Second, the small number of Treg-enriched patients with sufficient drug response data was limited ($n = 135$), which may have diminished statistical significance, and prevented us from establishing a robust aggregate cutoff to examine in a held-out validation dataset. To partially address this, however, we used an unsupervised clustering method which rendered our clusters independent of clinical variables (e.g., tumor stage, lymph node status, age), and we showed that our clusters are in good concordance with clusters derived from an independently proposed set of genes important for antitumor CD8+ T cell function. Third, as both a strength and a limitation, our chemosensitivity analysis was not specific to a certain drug, but rather for response to treatment for BLCA, LUAD, PAAD, SKCM, and STAD patients. Although this makes follow-up studies pertaining to a specific chemotherapeutic compound for a certain clinical indication less obvious, it allowed us to corroborate the paradigm of a 'hot' tumor across five tumor types and propose an immunogenic gene expression signature independent of clinical variables.

In conclusion, our study proposes a clinically robust 32-gene signature able to distinguish patients with a favorable phenotype in part through CD8+ T cell activity and abundance. Through a pan-cancer analysis of Treg-enriched patient tumor samples, we show two opposing contexts in which Tregs may be associated with alternative clinical features. This study marks the first pan-cancer patient study of its kind to interrogate tumor transcriptomic data to help reconcile the growing controversy of Tregs and their clinical impact. We believe the proposed gene signature may also serve as a promising starting point to extrapolate disease-specific gene signatures that could further sculpt the landscape of tumor immunobiology.

METHODS

Patient Selection, drug response data, and RNA-seq data

We used curated records of drug treatments and outcomes generated from TCGA clinical data⁶³ to treatment sensitivity labels. To analyze patient tumors overtly sensitive to treatment, patients with 'Complete Response' or 'Partial Response' were assigned to a 'sens' label, while patients with 'Stable Disease' or 'Clinical Progressive disease' were assigned to a 'res' label (Fig. 2). Sensitivity to treatment served as one parameter to assess clustering output significance (further discussed below).

RNAseq data (TOIL RSEM norm_count) was downloaded and used as input features for unsupervised clustering was from the TCGA Pan-Cancer cohort from xenabrowser.net (dataset ID: tcga_RSEM_Hugo_norm_count, unit: $\log_2(\text{norm_count} + 1)$, hub: GA4GH (TOIL) hub). This dataset contained 10,535 tumor samples, but only those with available drug response data enriched for Tregs were examined.

Treg GSEA filtering

We executed the filtering for Treg-enriched tumor samples via The Cancer Immunome Database (tcia.at) using GSEA of a non-overlapping, pan-cancer derived set of genes representative for Treg enrichment (FOXP3, CCL3L1, CD72, CLEC5A, ITGA4, L1CAM, LIPA, LRP1, LRRC42, MARCO, MMP12, MND A, MRC1, MS4A6A, PELO, PLEK, PRSS23, PTGIR, ST8SIA4, STAB1). This method has been previously described and clinically validated in further detail.¹⁷ For a TCGA cohort to be included in our analysis, it was required to comprise samples that were (1) enriched for Tregs ($q < 0.05$),¹⁷ and (2) have sufficient clinical drug response data (at least 15 samples with available drug response labels in each cohort). Coalescing and applying these two filters yielded 135 total patients for analysis across 5 TCGA cohorts (18 BLCA, 37 LUAD, 33 PAAD, 24 SKCM, 23 STAD). This allowed a sufficient population for a pan-cancer unsupervised gene-signature expression analysis ($n = 135$).

Gene signature selection and patient clustering

K-means clustering is a popular vector quantization method that we used to classify the 135 patient tumor samples ($k = 2$) via the ComplexHeatmap package in R using the Treg differentially expressed genes (DEGs) previously produced.¹⁸ However, instead of using all 64 Treg DEGs available, we used only the highly variable 32 genes as our feature gene set (outlier(s) removed and median standard deviation cutoff for 64 genes expressions within the 135 patient tumor samples). We used only the 32 highly variable genes because we hypothesized that the clinical Treg variability would be reflected strongly in the high fold-change expression variability of the DEGs themselves; that is, the DEGs with high expression variability would be those that best capture the phenotypically alternative microenvironmental contexts. This 32-gene set served as the feature set we used for k-means clustering (Fig. 2) (for clustering visualization, the expression of each gene was scaled to the z-score relative to expression of that gene across the 135 tumor samples). As assumed by the unsupervised classification process, drug response labels were not included as input features, and nor were cancer types. Together, the input dataset consisted of a table with 135 rows (TCGA patient IDs) and 32 columns (32 highly-variable Treg DEGs) of z-score scaled expression values. These procedures were replicated for the 626 patients of the validation data set.

Proportional significance analysis

Proportional cluster significance for patient drug response sensitivity enrichment was determined using the "N-1" Chi-squared test ($DF = 1, P < 0.05$ was considered significant).^{64,65} To eliminate the possibility of cancer-type serving as a confounding variable, and thus ensuring that cohorts analyzed were not unevenly representative of a certain cancer type, a Chi-squared tests of independence in a contingency table was performed using the scipy.stats module in Python ($P < 0.05$ was considered significant).

Survival analysis

OS data was downloaded from OncoLnc (oncolnc.org).⁶⁶ Survival datasets for the BLCA, LUAD, PAAD, SKCM, and STAD cohorts were parsed and Kaplan-Meier plots were generated in Python. Log-rank tests were conducted using the Lifelines implementation in Python (lifelines 0.11.1) (1 month was considered 30 days; $P < 0.05$ was considered significant).

Genomic/transcriptomic analysis

Patient genomic mutations and transcriptomic expression values were accessed using the fbget Python API and parsed in Python (<https://confluence.broadinstitute.org/display/GDAC/fbget>). Mutations were retrieved via whole-exome-sequencing MAF data, and gene expression values were retrieved as \log_2 -normalized values via RSEM. The Mann-Whitney test was performed to compare mutation counts between patient clusters/cohorts. Two-tailed t-tests were used to determine significantly differential expression of CD8A, CD8B, and HLA-A between cohorts.²¹ For both mutation count and differential gene expression, $P < 0.05$ was considered significant. Mutation histograms and expression swarm-boxplots were generated in Python using the Matplotlib and Seaborn libraries.

Immune-cell type abundance

To characterize immune cell composition within the 135 patient tumor samples, we used CIBERSORT.¹⁸ We used this method to present cell-type abundance via RNA transcript expression from a recommended gene expression profile of genes for 22 immune cell types. The recommended model parameters were used for this prediction task (e.g., LM22 signature gene file, disabled quantile normalization for RNA-seq data), and 1000 permutations were conducted.¹⁸ In short, this strategy applies nu-support vector regression (v-SVR) to discover a hyperplane that separates classes of interest. CIBERSORT has been shown to outperform other approaches and has been previously described in further detail.¹⁸

Pathway network analysis

For upregulated pathway network analysis, we used the integrated software workflow AltAnalyze, which is tool is used to analyze expression data in the context of interaction networks and pathways.^{67,68} The input data consisted of whole-transcriptome data from each patient (with 3325 tissue-specific genes from TisGDB filtered out⁶⁹ due to the pan-cancer

methodology) obtained from TOIL RSEM data⁷⁰ and encoded as $\log_2(\text{TPM} + 1)$ with no other normalizations. Enriched/upregulated pathways (from WikiPathways⁷¹) were those with at least a 2.0-fold-change surfaced from the integrated GO-Elite software that retained significance ($P < 0.05$) after Benjamini-Hochberg Fisher's exact P -value adjustment.

DNA accessibility analysis

DNA accessibility predictions across whole genomes for TCGA patients of interest were generated using a convolutional neural network model that has recently been shown to make accurate predictions at promoter and promoter flank sites, even for novel biotypes not seen in training.²⁶ The model makes binary accessibility predictions for 600-base-pair DNA sequences centered at potentially accessible sites, as identified through agglomerative clustering. Model input includes the DNA sequence of a specific site augmented with an input vector of select gene expression levels estimated from RNA-seq. This additional RNA-seq vector is what makes it possible for the neural network to learn to modulate accessibility predictions appropriately according to the cellular context and make predictions for unseen cell types.

Gene expression levels for patient samples were obtained from TOIL RSEM data⁷⁰ and encoded as $\log_2(\text{TPM} + 1)$ with no other normalizations. Since whole genome sequencing was not available for all patients of interest, all predictions were made using the reference genome hg19/GRCh37. It is therefore possible that some differences between patients were missed due to this lack of mutation information. Empirically it was found that including mutation information affected the classification outcome at 5.5% of promoter and promoter flank sites.

The model was trained to make predictions at 1.71 million genomic sites, with a training set consisting of 338.7 million training examples, spanning 66 unique cell and tissue types from ENCODE.²⁶ Of the 1.71 million training sites, the TCGA predictions were restricted to 108,970 sites that overlapped with promoter and promoter flank annotations. A classification threshold was selected such that the neural net achieved 80% precision on those sites when making predictions for novel biotypes, at which it demonstrated a recall of 65.3% and false positive rate of 10%. For analysis only the subset of those promoter and promoter flank sites that overlapped with protein coding genes (as annotated by GENCODE v19 and extended by 1k base pairs front the TSS) were considered, reducing the number of regions to 86,057.

IPS analysis

As previously described,¹⁷ a patient's IPS can be derived in an unbiased manner using machine learning by considering the four major categories of genes that determine immunogenicity (effector cells, immunosuppressive cells, MHC molecules, and immunomodulators) by the gene expression of the cell types these comprise (e.g., activated CD4+ T cells, activated CD8+ T cells, effector memory CD4+ T cells, Tregs, MDSCs). The IPS is calculated on a 0–10 scale based on representative cell type gene expression z-scores, where higher scores are associated with increased immunogenicity. This is because the IPS is positively weighted for stimulatory factors (e.g., CD8+ T cell gene expression) and negatively weighted for inhibitory factors (e.g., MDSC gene expression). Finally, the IPS is calculated based on a 0–10 scale relative to the sum of the weighted averaged z-scores. A z-score of three or more translates to an IPS of 10, while a z-scores 0 or less translates to an IPS of 0, demonstrating a higher IPS is representative of a more immunogenic tumor.¹⁷ This method has been described in further detail with the immunogenic determinant categories, as well as corresponding cell types and gene sets, which can be found at tcia.at.¹⁷

We retrieved patient IPSs from The Cancer Immunome Atlas framework. Relative bar plots were generated for visualization and error bars reflect standard deviations. Two-tailed t -tests were used to determine significantly differential IPS values ($P < 0.05$ was considered significant).

Immunotherapy gene set concordance analysis

The 19 genes used to reinforce our 32-gene signature derived clusters were taken from a previous study that used a 2CT-CRISPR assay system to identify 554 candidate genes essential for immunotherapy.¹⁹ Via hierarchical clustering, the gene set we examined were those of the 554 genes that identified to be correlated with cytolytic activity across most TCGA cancer types.¹⁹ One patient sample and one gene were lost while conducting this analysis due to data availability (e.g., 18 genes and 134

patients were examined). To measure concordance, we calculated Cohen's kappa via a concordance table of clusters predicted from k-means with our 32-gene set and the Patel 18-gene set.³¹ A Cohen's kappa value of 0.61–0.80 constituted a 'good' quality of agreement, as previously described.^{30,31}

The heatmap representative of the relative expressions of the 12/18 genes significantly elevated in cluster1 patients (acceptable $P < 0.003$) was produced with the ComplexHeatmap package in R. Clusters represented are those derived from our initial 32-gene k-means clustering. We used this gene set as validation to show that the 32-gene signature used for clustering was able to produce a cluster with high expression of the same genes recently identified as likely essential for immunotherapy in an independent setting.

All custom code for this study are available upon request.

The research in this study was performed in accordance with all relevant guidelines and procedures, was approved by the institutions (NantOmics LLC, NantBioscience, Inc.), and all authors provided full written consent. All patients of the study provided written informed consent for use of their samples for analysis and publication.

Data availability

All data from this study are publically available at xenabrowser.net/datapages/.

AUTHOR CONTRIBUTIONS

K.B.G. generated hypotheses, performed research, conducted bioinformatics methods, analyzed results, wrote manuscript. K.W. developed DNA accessibility tool and generated accessibility results. C.G. and S.B., advised methods and oversaw manuscript preparation. H.G, K.N. and reviewed results and final manuscript. S.R. and P.S.S contributed scientific direction and reviewed final manuscript.

ADDITIONAL INFORMATION

Supplementary information accompanies the paper on the *npj Genomic Medicine* website (<https://doi.org/10.1038/s41525-018-0054-7>).

Competing interests: All authors of the study are currently employees of NantOmics and/or NantBioscience.

Publisher's note: Springer Nature remains neutral with regard to jurisdictional claims in published maps and institutional affiliations.

REFERENCES

- Ladoire, S., Martin, F. & Ghiringhelli, F. Prognostic role of FOXP3+ regulatory T cells infiltrating human carcinomas: the paradox of colorectal cancer. *Cancer Immunol., Immunother.* **60**, 909–918 (2011).
- Shang, B., Liu, Y., Jiang, S.-j & Liu, Y. Prognostic value of tumor-infiltrating FoxP3+ regulatory T cells in cancers: a systematic review and meta-analysis. *Sci. Rep.* **5**, 15179 (2015).
- Phan, V. & Disis, M. L. Tumor stromal barriers to the success of adoptive T cell therapy. *Cancer Immunol., Immunother.* **57**, 281–283 (2007).
- Chang, L. Y. et al. Tumor-derived chemokine CCL5 enhances TGF- β -mediated killing of CD8+ T cells in colon cancer by T-regulatory cells. *Cancer Res.* **72**, 1092–1102 (2012).
- Gao, Q. et al. Intratumoral balance of regulatory and cytotoxic T cells is associated with prognosis of hepatocellular carcinoma after resection. *J. Clin. Oncol.* **25**, 2586–2593 (2007).
- Salama, P. et al. Tumor-infiltrating FOXP3+ T regulatory cells show strong prognostic significance in colorectal cancer. *J. Clin. Oncol.* **27**, 186–192 (2009).
- Frey, D. M. et al. High frequency of tumor-infiltrating FOXP3+ regulatory T cells predicts improved survival in mismatch repair-proficient colorectal cancer patients. *Int. J. Cancer*, **126**(11), 2635–2643 (2010).
- Correale, P. et al. Regulatory (FoxP3+) T-cell tumor infiltration is a favorable prognostic factor in advanced colon cancer patients undergoing chemo or chemoimmunotherapy. *J. Immunother.* **33**, 435–441 (2010).
- Lee, A. M. et al. Number of CD4+ cells and location of forkhead box protein P3-positive cells in diagnostic follicular lymphoma tissue microarrays correlates with outcome. *J. Clin. Oncol.* **24**, 5052–5059 (2006).
- Badoual, C. Prognostic value of tumor-infiltrating CD4+ T-cell subpopulations in head and neck cancers. *Clin. Cancer Res.* **12**, 465–472 (2006).

11. Milne, K. et al. Systematic analysis of immune infiltrates in high-grade serous ovarian cancer reveals CD20, FoxP3 and TIA-1 as positive prognostic factors. *PLoS ONE* **4**, e6412 (2009).
12. Haas, M. et al. Stromal regulatory T-cells are associated with a favourable prognosis in gastric cancer of the cardia. *BMC Gastroenterol.* **9**, 65 (2009).
13. Ward-Hartstonge, K. A. & Kemp, R. A. Regulatory T-cell heterogeneity and the cancer immune response. *Clin. Transl. Immunol.* **6**, e154 (2017).
14. deLeeuw, R. J., Kost, S. E., Kakal, J. A. & Nelson, B. H. The prognostic value of FoxP3 + tumor-infiltrating lymphocytes in cancer: a critical review of the literature. *Clin. Cancer Res.* **18**, 3022–3029 (2012).
15. Ward-Hartstonge, K. A. et al. Inclusion of BLIMP-1+ effector regulatory T cells improves the Immunoscore in a cohort of New Zealand colorectal cancer patients: a pilot study. *Cancer Immunol., Immunother.* **66**, 515–522 (2017).
16. Nakayama, S. et al. Infiltration of effector regulatory T cells predicts poor prognosis of diffuse large B-cell lymphoma, not otherwise specified. *Blood Adv.* **1**, 486–493 (2017).
17. Charoentong, P. et al. Pan-cancer immunogenomic analyses reveal genotype-immunophenotype relationships and predictors of response to checkpoint blockade. *Cell Rep.* **18**, 248–262 (2017).
18. Newman, A. M. et al. Robust enumeration of cell subsets from tissue expression profiles. *Nat. Methods* **12**, 453–457 (2015).
19. Patel, S. J. et al. Identification of essential genes for cancer immunotherapy. *Nature* **548**, 537–542 (2017).
20. Riaz, N. et al. Tumor and microenvironment evolution during immunotherapy with Nivolumab. *Cell* **171**, 934–949. e915 (2017).
21. Brown, S. D. et al. Neo-antigens predicted by tumor genome meta-analysis correlate with increased patient survival. *Genome Res.* **24**, 743–750 (2014).
22. Mognol, G. P. et al. Exhaustion-associated regulatory regions in CD8+ tumor-infiltrating T cells. *Proc. Natl Acad. Sci.* **114**, E2776–E2785 (2017).
23. Pan, D. et al. A major chromatin regulator determines resistance of tumor cells to T cell-mediated killing. *Science* **359**, 770–775 (2018). eaao1710.
24. Miao, D. et al. Genomic correlates of response to immune checkpoint therapies in clear cell renal cell carcinoma. *Science*, **359**, 801–806 (2018). eaan5951.
25. Kelley, D. R., Snoek, J. & Rinn, J. L. Basset: learning the regulatory code of the accessible genome with deep convolutional neural networks. *Genome Res.* **26**, 990–999 (2016).
26. Wnuk, K., Sudol, J., Rabizadeh, S., Szeto, C. & Vaske, C. Predicting DNA accessibility in the pan-cancer tumor genome using RNA-seq, WGS, and deep learning. Preprint at <https://www.biorxiv.org/content/early/2017/12/05/229385> (2017).
27. Ng, M. H. J. et al. MIP-3 is a negative regulator of innate type I IFN response. *J. Immunol.* **187**, 6473–6482 (2011).
28. Nakajima, C. et al. A role of interferon-gamma (IFN-gamma) in tumor immunity: T cells with the capacity to reject tumor cells are generated but fail to migrate to tumor sites in IFN-gamma-deficient mice. *Cancer Res.* **61**, 3399 (2001).
29. Seliger, B., Ruiz-Cabello, F. & Garrido, F. IFN inducibility of major histocompatibility antigens in tumors. *Adv. Cancer Res.* **101**, 249–276 (2008).
30. Ashby, D. Practical statistics for medical research. *Stat. Med.* **10**, 1635–1636 (1991). Douglas G. Altman, Chapman and Hall, London, 1991. 611pp.
31. Kwiciecien, R., Kopp-Schneider, A. & Blettner, M. Concordance analysis: part 16 of a series on evaluation of scientific publications. *Dtsch. Ärzteblatt Int.* **108**, 515 (2011).
32. Adams, S. et al. Prognostic value of tumor-infiltrating lymphocytes in triple-negative breast cancers from two phase III randomized adjuvant breast cancer trials: ECOG 2197 and ECOG 1199. *J. Clin. Oncol.* **32**, 2959–2966 (2014).
33. Loi, S. et al. Prognostic and predictive value of tumor-infiltrating lymphocytes in a phase III randomized adjuvant breast cancer trial in node-positive breast cancer comparing the addition of docetaxel to doxorubicin with doxorubicin-based chemotherapy: BIG 02-98. *J. Clin. Oncol.* **31**, 860–867 (2013).
34. Mahmoud, S. M. A. et al. Tumor-infiltrating CD8+ lymphocytes predict clinical outcome in breast cancer. *J. Clin. Oncol.* **29**, 1949–1955 (2011).
35. Angell, H. & Galon, J. From the immune contexture to the Immunoscore: the role of prognostic and predictive immune markers in cancer. *Curr. Opin. Immunol.* **25**, 261–267 (2013).
36. Wolf, G. T. et al. Tumor infiltrating lymphocytes (TIL) and prognosis in oral cavity squamous carcinoma: a preliminary study. *Oral. Oncol.* **51**, 90–95 (2015).
37. van der Veen, J. et al. Memory of inflammation in regulatory T cells. *Cell* **166**, 977–990 (2016).
38. Booth, L., Roberts, J. L., Poklepovic, A., Kirkwood, J. & Dent, P. HDAC inhibitors enhance the immunotherapy response of melanoma cells. *Oncotarget* **8**, 83155 (2017).
39. Brinkman, C. C. et al. Treg engage lymphotoxin beta receptor for afferent lymphatic transendothelial migration. *Nat. Commun.* **7**, 12021 (2016).
40. Baras, A. S. et al. The ratio of CD8 to Treg tumor-infiltrating lymphocytes is associated with response to cisplatin-based neoadjuvant chemotherapy in patients with muscle invasive urothelial carcinoma of the bladder. *Oncolmmunology* **5**, e1134412 (2016).
41. Lee, N., Zakkai, L. R., Mihm, M. C. & Schatton, T. Tumour-infiltrating lymphocytes in melanoma prognosis and cancer immunotherapy. *Pathology* **48**, 177–187 (2016).
42. Liu, K. et al. Tumor-infiltrating immune cells are associated with prognosis of gastric cancer. *Medicine* **94**, e1631 (2015).
43. Carstens, J. L. et al. Spatial computation of intratumoral T cells correlates with survival of patients with pancreatic cancer. *Nat. Commun.* **8**, 15095 (2017).
44. Brambilla, E. et al. Prognostic effect of tumor lymphocytic infiltration in resectable non-small-cell lung cancer. *J. Clin. Oncol.* **34**, 1223–1230 (2016).
45. Barth, R. J. Interferon gamma and tumor necrosis factor have a role in tumor regressions mediated by murine CD8+ tumor-infiltrating lymphocytes. *J. Exp. Med.* **173**, 647–658 (1991).
46. Preston, C. C. et al. The ratios of CD8+ T cells to CD4+ CD25+ FOXP3+ and FOXP3- T cells correlate with poor clinical outcome in human serous ovarian cancer. *PLoS ONE* **8**, e80063 (2013).
47. Ma, G. et al. High FoxP3 expression in tumour cells predicts better survival in gastric cancer and its role in tumour microenvironment. *Br. J. Cancer* **110**, 1552–1560 (2014).
48. Martin, F., Ladoire, S., Mignot, G., Apetoh, L. & Ghiringhelli, F. Human FOXP3 and cancer. *Oncogene* **29**, 4121–4129 (2010).
49. Zhang, H.-Y. & Sun, H. Up-regulation of Foxp3 inhibits cell proliferation, migration and invasion in epithelial ovarian cancer. *Cancer Lett.* **287**, 91–97 (2010).
50. Li, W. et al. Identification of a tumor suppressor relay between the FOXP3 and the Hippo pathways in breast and prostate cancers. *Cancer Res.* **71**, 2162–2171 (2011).
51. Tao, H. et al. Prognostic potential of FOXP3 expression in non-small cell lung cancer cells combined with tumor-infiltrating regulatory T cells. *Lung Cancer* **75**, 95–101 (2012).
52. Maio, M. Melanoma as a model tumour for immuno-oncology. *Ann. Oncol.* **23**, viii10–viii14 (2012).
53. Ma, G. et al. High FoxP3 expression in tumour cells predicts better survival in gastric cancer and its role in tumour microenvironment. *Br. J. Cancer* **110**, 1552 (2014).
54. Yuan, A. et al. Opposite effects of M1 and M2 macrophage subtypes on lung cancer progression. *Sci. Rep.* **5**, 14273 (2015).
55. Biswas, S. K. & Mantovani, A. Macrophage plasticity and interaction with lymphocyte subsets: cancer as a paradigm. *Nat. Immunol.* **11**, 889–896 (2010).
56. Solinas, G., Germano, G., Mantovani, A. & Allavena, P. Tumor-associated macrophages (TAM) as major players of the cancer-related inflammation. *J. Leukoc. Biol.* **86**, 1065–1073 (2009).
57. Mantovani, A. & Allavena, P. The interaction of anticancer therapies with tumor-associated macrophages. *J. Exp. Med.* **212**, 435–445 (2015).
58. Plimack, E. R. et al. Defects in DNA repair genes predict response to neoadjuvant cisplatin-based chemotherapy in muscle-invasive bladder cancer. *Eur. Urol.* **68**, 959–967 (2015).
59. Brown, K. K., Spinelli, J. B., Asara, J. M. & Toker, A. Adaptive reprogramming of de novo pyrimidine synthesis is a metabolic vulnerability in triple-negative breast cancer. *Cancer Discov.* **7**, 391–399 (2017).
60. Liu, D. et al. Clinical validation of chemotherapy response biomarker ERCC2 in muscle-invasive urothelial bladder carcinoma. *JAMA Oncol.* **2**, 1094–1096 (2016).
61. Mullane, S. A. et al. Expression levels of DNA damage repair proteins are associated with overall survival in platinum-treated advanced urothelial carcinoma. *Clin. Genitourin. Cancer* **14**, 352–359 (2016).
62. Ceppi, P. et al. ERCC1 and RRM1 gene expressions but not EGFR are predictive of shorter survival in advanced non-small-cell lung cancer treated with cisplatin and gemcitabine. *Ann. Oncol.* **17**, 1818–1825 (2006).
63. Ding, Z., Zu, S. & Gu, J. Evaluating the molecule-based prediction of clinical drug responses in cancer. *Bioinformatics* **32**, 2891–2895 (2016).
64. Campbell, I. Chi-squared and Fisher–Irwin tests of two-by-two tables with small sample recommendations. *Stat. Med.* **26**, 3661–3675 (2007).
65. Richardson, J. T. E. The analysis of 2 × 2 contingency tables—Yet again. *Stat. Med.* **30**, 890–890 (2011).
66. Anaya, J. OncoLnc: linking TCGA survival data to mRNAs, miRNAs, and lncRNAs. *PeerJ Comput. Sci.* **2**, e67 (2016).
67. Emig, D. et al. AltAnalyze and DomainGraph: analyzing and visualizing exon expression data. *Nucleic Acids Res.* **38**, W755–W762 (2010).
68. Salomonis, N. et al. Alternative splicing regulates mouse embryonic stem cell pluripotency and differentiation. *Proc. Natl Acad. Sci.* **107**, 10514–10519 (2010).
69. Kim, P. et al. TISSGDB: tissue-specific gene database in cancer. *Nucleic Acids Res.* **46**, D1031–D1038 (2018).
70. Vivian, J. et al. Toil enables reproducible, open source, big biomedical data analyses. *Nat. Biotechnol.* **35**, 314–316 (2017).
71. Kutmon, M. et al. WikiPathways: capturing the full diversity of pathway knowledge. *Nucleic Acids Res.* **44**, D488–D494 (2015).



Open Access This article is licensed under a Creative Commons Attribution 4.0 International License, which permits use, sharing, adaptation, distribution and reproduction in any medium or format, as long as you give appropriate credit to the original author(s) and the source, provide a link to the Creative Commons license, and indicate if changes were made. The images or other third party material in this article are included in the article's Creative Commons license, unless indicated otherwise in a credit line to the material. If material is not included in the

article's Creative Commons license and your intended use is not permitted by statutory regulation or exceeds the permitted use, you will need to obtain permission directly from the copyright holder. To view a copy of this license, visit <http://creativecommons.org/licenses/by/4.0/>.

© The Author(s) 2018