

Disorders of the Nervous System

Evidence for Paracrine Protective Role of Exogenous α A-Crystallin in Retinal Ganglion Cells

Madhu Nath,^{1,*} Zachary B. Sluzala,^{1,*} Ashutosh S. Phadte,^{1,2,*} Yang Shan,¹ Angela M. Myers,¹ and Patrice E. Fort^{1,3}

<https://doi.org/10.1523/ENEURO.0045-22.2022>

¹Department of Ophthalmology and Visual Sciences, University of Michigan, Ann Arbor, MI 48105, ²Currently in Department of Biochemistry and Molecular Biology, Thomas Jefferson University, Philadelphia, PA 19107, and ³Department of Molecular and Integrative Physiology, University of Michigan, Ann Arbor, MI 48105

Abstract

Expression and secretion of neurotrophic factors have long been known as a key mechanism of neuroglial interaction in the central nervous system. In addition, several other intrinsic neuroprotective pathways have been described, including those involving small heat shock proteins such as α -crystallins. While initially considered as a purely intracellular mechanism, both α A-crystallins and α B-crystallins have been recently reported to be secreted by glial cells. While an anti-apoptotic effect of such secreted α A-crystallin has been suggested, its regulation and protective potential remain unclear. We recently identified residue threonine 148 (T148) and its phosphorylation as a critical regulator of α A-crystallin intrinsic neuroprotective function. In the current study, we explored how mutation of this residue affected α A-crystallin chaperone function, secretion, and paracrine protective function using primary glial and neuronal cells. After demonstrating the paracrine protective effect of α A-crystallins secreted by primary Müller glial cells (MGCs), we purified and characterized recombinant α A-crystallin proteins mutated on the T148 regulatory residue. Characterization of the biochemical properties of these mutants revealed an increased chaperone activity of the phosphomimetic T148D mutant. Consistent with this observation, we also show that exogenous supplementation of the phosphomimetic T148D mutant protein protected primary retinal neurons from metabolic stress despite similar cellular uptake. In contrast, the nonphosphorylatable mutant was completely ineffective. Altogether, our study demonstrates the paracrine role of α A-crystallin in the central nervous system as well as the therapeutic potential of functionally enhanced α A-crystallin recombinant proteins to prevent metabolic-stress induced neurodegeneration.

Key words: α A-crystallin; chaperone; metabolic stress; neuroprotection; recombinant proteins

Significance Statement

α A-crystallin is a chaperone protein that has been long known for its critical role in the lens proteostasis. Recent studies have highlighted the protective potential of α A-crystallin in the central nervous system, especially the retina. The broad chaperone and cytoprotective functions of α A-crystallin make it a very attractive target in the context of the dire need for novel protective therapies for neurodegenerative diseases. Our previous work has shown that phosphorylation on threonine 148 (T148) is a critical regulator of the cytoprotective function of α A-crystallin. The current study demonstrates that α A-crystallin secreted by Müller glial cells (MGCs) plays a paracrine protective role for retinal neurons. We further demonstrated the therapeutic potential of a functionally enhanced α A-crystallin recombinant protein in promoting neuronal survival.

Received January 28, 2022; accepted February 2, 2022; First published February 15, 2022.

P.E.F. has intellectual property interests and is listed as inventor on a patent for the use of CryAA as a retinal neuroprotective treatment. All other authors declare no competing financial interests.

Author contributions: P.E.F. designed research; M.N., Z.B.S., A.S.P., Y.S., and A.M.M. performed research; P.E.F. and A.M.M. contributed unpublished reagents/analytic tools; P.E.F., M.N., Z.B.S., A.P., Y.S., and A.M.M. analyzed data; P.E.F., M.N., Z.B.S., A.S.P., Y.S., and A.M.M. wrote the paper.

Introduction

α -Crystallins (α A- and α B-) have been extensively described as resident chaperone proteins in the eye lens and are imperative for maintaining transparency (Masilamoni et al., 2005; Hejtmančik et al., 2015; Makley et al., 2015; Ghosh and Chauhan, 2019). In recent years, both proteins gained substantial interest in the context of retinal insults and neurodegenerative diseases (Ying et al., 2008; Munemasa et al., 2009; Wang et al., 2011; Piri et al., 2013; Zhu and Reiser, 2018). Although the presence of α -crystallins was initially described and studied in the ocular lens, their expression is not limited to this tissue. α B-crystallin is ubiquitously expressed or stress-induced in most tissues and cells, including heart, skeletal muscle, kidney, lung, brain, and retina. α A-crystallin, however, is basally expressed at low levels in a limited number of tissues while highly induced under stress conditions in the kidney and the central nervous system, including the retina (Dubin et al., 1991; Zhang et al., 2019). In the retina, both α -crystallin proteins have been found predominantly in glia and retinal ganglion cells (RGCs) in the inner retina, as well as photoreceptors and retinal pigmented epithelium (RPE) in the outer retina (Rao et al., 2008; Munemasa et al., 2009; Kase et al., 2012; Shi et al., 2015; Kannan et al., 2016; Ruebsam et al., 2018). Initially thought to be products of gene duplication, both α A-crystallins and α B-crystallins are now known to present different expression patterns and functional roles, independent from each other, including in neuroprotection (Robinson and Overbeek, 1996).

The neuroprotective function has been recently linked to both α A-crystallins and α B-crystallins in the context of different neurodegenerative diseases (Kannan et al., 2016; Zhu and Reiser, 2018). Proposed mechanisms for these neuroprotective functions of α -crystallin proteins include attenuation of mitochondrial dysfunction (Zhu and Reiser, 2018), reduced accumulation of misfolded proteins (Schmidt et al., 2012), and specific disruption of neuronal apoptotic pathways (Piri et al., 2013, 2016; Hua Wang et al., 2020). Additionally, studies have established a strong relationship between these two protein's expression and chaperone activity and their observed anti-apoptotic function (Pasupuleti et al., 2010; Piri et al., 2013). As members of the small heat shock protein family, α -crystallins have been shown to prevent protein aggregation as well as promote cell survival under conditions such as chemically induced hypoxia (Yaung et al., 2008; Schmidt et al., 2012) including through inhibition of

apoptosis. Expression of α A-crystallins and α B-crystallins have been shown to increase in an experimental model of light-induced damage to the retina (Heinig et al., 2020), as well as at different stages of the wound healing process following retinal tear (Baba et al., 2015). Consistent with a protective potential for retinal neurons, α -crystallin expression was also shown to correlate with increased RGC survival following optic nerve axotomy (Munemasa et al., 2009) and in rescuing photoreceptors in a light-induced damage model (Heinig et al., 2020).

Studies from our lab and others have reported an increased α A-crystallin expression in the retinas of diabetic rodents as well as human donors with diabetes (Fort et al., 2009; Ruebsam et al., 2018). However, α A-crystallin function seemed to be impaired in the diabetic retina, as suggested by loss of solubility, and change in their post-translational modification (PTM) pattern (Reddy et al., 2013). PTMs have been reported to not only influence the structure but also the neuroprotective and chaperone functions of α -crystallins (Kim et al., 2007; Heise et al., 2013). Specifically, phosphorylation on serine residues 19, 45, and 59 of α B-crystallin (Kim et al., 2007; Heise et al., 2013; Reddy et al., 2013) and residues 122 and 148 of α A-crystallin seem to be critical regulators of their chaperone and protective functions (Ruebsam et al., 2018). Interestingly, while previous studies have shown increased phosphorylation for α B-crystallin (Heise et al., 2013; Reddy et al., 2013), α A-crystallin phosphorylation on residue 148 was dramatically reduced in the retina from diabetic rodents and diabetic donors, especially those with retinopathy (Ruebsam et al., 2018). We also showed that the threonine 148 (T148)D phosphomimetic form of α A-crystallin is a potent neuroprotector for retinal neurons against serum deprivation-induced cell death (Ruebsam et al., 2018). Furthermore, we have demonstrated that glial cells overexpressing α A-crystallin secrete the protein in their extracellular environment and that supplementation of conditioned media from these cells efficiently promotes R28 cell survival following exposure to serum starvation-induced apoptotic stress (Ruebsam et al., 2018). Interestingly, these observed anti-apoptotic effects were only observed from cells expressing the wild-type (WT) or phosphomimetic (T148D) protein, but not its nonphosphorylatable counterpart (T148A). While this pointed to a critical role of this phosphorylation, the impact of this posttranslational modification on the structure-function relationship of α A-crystallin remains unknown.

In all, our current understanding of α -crystallin function draws out two major observations that (1) α A-crystallin serves a key neuroprotective function within the retinal tissue and (2) controlling/enhancing α A-crystallin function presents the high potential to promote retinal cell survival and maintenance of the microarchitecture of the neuroretina. Therefore, in the present study, we studied the impact of T148D mutation of α A-crystallin on its chaperone function and associated alteration of its biochemical properties. Furthermore, we assessed the potential of supplementation with recombinant T148D α A-crystallin protein to promote survival of retinal neurons, especially primary RGCs, following exposure to metabolic stress. The current study, therefore, unveils

This work was supported by the National Eye Institute Grant EY020895, the National Institutes of Health (NIH) Grant P30EY007003 (Core Grant for Vision Research at the University of Michigan), the NIH Grant P30DK020572 (Michigan Diabetes Research Center), Research to Prevent Blindness, and the Lichten Award.

*M.N., Z.B.S., and A.S.P. are equal contributors and co-first authors.

Correspondence should be addressed to Patrice E. Fort at patricef@umich.edu.

<https://doi.org/10.1523/ENEURO.0045-22.2022>

Copyright © 2022 Nath et al.

This is an open-access article distributed under the terms of the [Creative Commons Attribution 4.0 International license](https://creativecommons.org/licenses/by/4.0/), which permits unrestricted use, distribution and reproduction in any medium provided that the original work is properly attributed.

an exciting new avenue for the use of α A-crystallin and its functionally enhanced derivatives to slow the progression of retinal neurodegenerative disorders.

Materials and Methods

Cell lines

Rat retinal Müller cells (rMC-1) and retinal neuronal cell (R28) lines were obtained from Applied Biological Materials Inc. All cell lines were maintained in DMEM, 5 mM glucose (DMEM-NG) supplemented with 10% fetal bovine serum (FBS; Flow Laboratories) at 37°C, 5% CO₂ unless stated otherwise. For experiments, R28 cells were differentiated into neurons in DMEM with 8-(4-chlorophenylthio) cAMP (8-CPT-cAMP; catalog #C3912, Millipore Sigma) at a final concentration of 2.5 mM on laminin-coated plates as described earlier (Ruebsam et al., 2018).

Primary Müller glial cells (MGCs) were obtained from the α A-crystallin knock-out (AKO) mice originally generously provided by Wawrousek from the National Eye Institute (NEI). Cells were isolated using a protocol adapted from Hicks and Courtois (Hicks and Courtois, 1990) and characterized previously (Brady et al., 1997). Briefly, primary MGCs were isolated from the retinal tissue of Post-natal day (P10–P14) AKO mice pups and maintained in DMEM-NG + 10% FBS + 1% penicillin/streptomycin (catalog #15140122, Thermo Fisher Scientific). The purity and specificity of the cell preparation were validated by evaluating the expression of the Müller cell-specific markers glutamine synthetase, Prdx-6, and Abc8a from Passage 2–6 as described previously (Nath et al., 2021).

Primary RGCs

RGCs were isolated and purified from AKO mice pups at P3–P5 using a modified immunopanning method described previously (Winzeler and Wang, 2013). The purified RGCs were resuspended in growth media containing B27 supplement (Thermo Fisher Scientific), 50 ng/ml BDNF (catalog #B3795, Millipore Sigma), 10 ng/ml CNTF (catalog #C3835, Millipore Sigma), and 4 μ g/ml forskolin (catalog #F3917, Millipore Sigma) before being seeded onto poly-D-lysine and laminin-coated glass coverslips in 24-well culture plates. Cells were seeded at a density of 30,000 cells/cm² and the growth media was changed every 3 d until use.

Transient transfection of rMC-1 and MGCs and recovery of conditioned media

Cells were transfected using the Neon Transfection System (Invitrogen) following the manufacturer's instructions. Briefly, cells were trypsinized and washed in PBS before being resuspended in 110- μ l resuspension buffer and electroporated with 2.5 μ g of the previously characterized pcDNA 3.1 vectors expressing either WT, the phosphomimetic T148D, or the nonphosphorylatable T148A crystallins, respectively (Ruebsam et al., 2018) and were seeded in six-well plates. The next day, transfected cells were incubated either in serum-free DMEM-NG (with 20 mM mannitol), DMEM-HG (DMEM-NG with 20 mM glucose), or DMEM-HG with 100 ng/ml TNF α (catalog #210-

Table 1: Primers used for point mutations on T148 corresponding to the phosphomimetic (T148D) and the nonphosphorylatable (T148A) analog of α A-crystallin

Protein	Primers
T148A	5'-gcatccaggccagcctggatcttgggg-3' 5'-ccccagatccaggctggcctggatgc-3'
T148D	5'-gtggcatccaggccatcctggatcttggggcc-3' 5'-ggccccaagatccaggatggcctggatgccac-3'

TA, R&D Systems) for 24 h. Cells incubated in DMEM-NG served as the experimental control.

Following incubation, growth media from transfected glial cells was recovered and prepared as previously described (Ruebsam et al., 2018). Briefly, the media was first filtered using a 0.22- μ m syringe filter (catalog SLMP025SS, Millipore Sigma) and then centrifuged sequentially at 300 \times g for 6 min, 3000 \times g for 20 min, and 5000 \times g for 10 min at room temperature. Finally, the media were concentrated using 3K MWCO concentrators (catalog #C775, Amicon, Merck Millipore) and stored at 4°C until use in conditioned media experiments.

Generation of recombinant α A-crystallins

pET23d+ vectors containing the cDNA sequence for human α A-crystallin were used as a template for generating mutant proteins. Point mutations on T148 corresponding to the phosphomimetic (T148D) and the nonphosphorylatable (T148A) analog of α A-crystallin were introduced using the QuikChange Site-directed mutagenesis kit (Agilent Technologies) using primers listed in Table 1. Cloned plasmids were scaled up in XL-1 Blue supercompetent cells, and isolated plasmid sequences were confirmed by Sanger sequencing. Sequenced plasmids were then used to transform BL21(DE3) pLysS cells to optimize the respective proteins' expression.

Cells were grown in LB Miller broth (catalog #BP142610P1, Fisher Scientific) in a rotary shaker maintained at 37°C, 225 rpm, till they reached an OD₆₀₀ between 0.4 and 0.6. Protein expression was induced by the addition of isopropyl- β -D-thiogalactopyranoside (IPTG; catalog #12481C, GoldBio) at a final concentration of 500 μ M for 4 h. Bacterial cell pellets were harvested by centrifugation at 4000 rpm for 20 min at 4°C and stored overnight at –80°C. Cell lysis and protein purification were conducted using size exclusion chromatography as described previously (Horwitz et al., 1999). Purified proteins were subjected to endotoxin removal using Triton X-114-mediated phase separation using a protocol adapted from Teodorowicz et al. (2017). The efficacy of endotoxin removal was ascertained using the Pierce Chromogenic Endotoxin Quant kit (catalog #A39552, Thermo Fisher Scientific) as per manufacturer's instructions. Protein purity was assessed by Coomassie Blue staining and Immunoblot analysis (Fig. 3A). All proteins were stored in PBS pH 7.4 at –80°C until use.

Chaperone activity assay

The functional efficacy of purified α A-crystallins to prevent nonspecific protein aggregation *in vitro* was assessed by chaperone assays as described previously

(Horwitz, 1992). Aggregation of 75- μ g alcohol dehydrogenase (ADH) in PBS pH 7.4 against varied amounts of α A-crystallin was chemically induced by adding EDTA at a concentration of 37.5 mM. Protein aggregation was monitored as relative absorbance at 360 nm in a FLUOstar OMEGA plate reader (BMG Labtech). Representative assays are an average of three independent experiments for statistical significance.

Native gel electrophoresis

The polydispersity profile of purified α A-crystallins *in vitro* was assessed by Native PAGE gels. Samples were prepared using 7.5 μ g of recombinant WT, T148D, or T148A α A-crystallin resuspended in Novex Tris-Glycine Native Sample buffer (2 \times ; catalog #LC2673, Thermo Fisher Scientific) and deionized water. Samples were loaded on NativePAGE 3–12%, Bis-Tris gels (catalog #BN1001BOX, Thermo Fisher Scientific). Gels were run using 1 \times NativePAGE Anode buffer and 1 \times NativePAGE Dark Blue Cathode buffer as per manufacturer's instructions. Gels were fixed and de-stained as per manufacturer's instructions and then imaged using a FluorChem E system (Protein Simple). Images were analyzed using the Gel Analyzer function of ImageJ (Schneider et al., 2012) and the molecular size markers run on either side of the recombinant proteins, allowing us to obtain the median size of the oligomers for each recombinant protein. The area under the curve is shown as a function of oligomer sizes from <480 to 1236 kDa, with the median shown for each recombinant protein.

Solubility assays

As above, cells were transfected with 2.5 μ g of pcDNA 3.1 (+) plasmids expressing either WT, T148D, or T148A crystallins or an empty vector (EV) and were seeded in six-well plates. The next day, transfected cells were incubated either in DMEM-NG + 10% FBS or serum-free DMEM-NG for 4 or 24 h. Cells transfected with EV served as an experimental control. Following incubation, cells were harvested on ice in chilled RIPA buffer (100 mM Tris pH 7.5, 3 mM EGTA, 5 mM MgCl₂, 0.5% Triton X-100, 1 mM PMSF, 1 \times complete EDTA-free protease inhibitor cocktail tablet; Roche Diagnostics) and subjected to immunoblot analyses.

Protein uptake assay

Differentiated R28 cells were allowed to grow on laminin-coated plates for 36 h. Recombinant WT, T148D, or T148A crystallins were supplemented to growth media at a concentration of 500 ng/ml. Protein uptake in R28 cells was tested in DMEM-NG versus serum-free DMEM-NG, the presence and absence of BSA for 4 h. Protein uptake by R28 cells was also tested under stress by incubating cells in serum-free DMEM-NG (with 20 mM mannitol), DMEM-HG (DMEM-NG with 20 mM glucose), or DMEM-HG with 100 ng/ml TNF α . Following incubation, cells were harvested on ice in chilled RIPA buffer and subjected to immunoblot analyses.

Proteinase K susceptibility assay

Differentiated R28 cells were allowed to grow on laminin-coated six-well plates for 36 h. Recombinant WT α A-

crystallin was supplemented with growth media at a 500 ng/ml concentration for 2, 4, and 24 h. The cell lysates were then subjected to proteinase K treatment as adopted by Ruebsam et al., 2018. Briefly, cell lysates were treated with 100 ng proteinase K (Millipore Sigma) in a reaction containing 10 mM Tris-HCl (pH 7.4) with or without Triton X-100 (1%) for 30 min at 37°C. The reaction was stopped by the addition of loading buffer and heated at 70°C for 10 min. A control sample was treated the same way, aside from the omission of the enzymes. Protein levels were then assessed by immunoblotting as described below.

Immunoblotting analyses

Protein concentrations were measured with the Pierce BCA reagent, and all samples and conditioned media were adjusted for equal protein concentration. To assess the purity of the recombinant protein preparations, 50 ng of pure protein was subjected to immunoblot analyses. For protein uptake experiments, cells were homogenized by sonication in RIPA buffer as described previously (Ruebsam et al., 2018) and 35 μ g of the total cell lysate was loaded on 4–12% NuPage Bis-Tris gels (Thermo Fisher Scientific). Gels were run in MES buffer (Thermo Fisher Scientific) as per manufacturer's instructions. Western blot transfer was conducted on nitrocellulose membranes using the Mini Trans-Blot cell (catalog #1703930, Bio-Rad) at 160 V for 1 h at 4°C. For solubility assays, RIPA-soluble protein lysates were collected, and insoluble pellets were resuspended after PBS wash by sonication in Urea buffer (10 mM Tris pH 7.5, 150 mM NaCl, 5 mM EGTA, 5 mM MgCl₂, 1 mM DTT, 0.1% Triton X-100, 0.2 mM PMSF, 9 M urea). Soluble samples were adjusted for equal protein concentration, while insoluble samples were adjusted for equal volume. Samples were loaded on 4–12% NuPage Bis-Tris gels and run in MES buffer as per manufacturer's instructions, at 110 V. Cell lysates and conditioned media were immunoblotted for α A-crystallin (sc-28306, Santa Cruz Biotechnology) and β -actin (MAB-1501, Millipore) as a loading control. Solubility was measured as a ratio of insoluble α A-crystallin to total α A-crystallin for each condition (using the Gel Analyzer function in ImageJ; Schneider et al., 2012), normalized to WT, and data were analyzed using the GraphPad Prism software module (GraphPad Software).

Cell death assay

Cell death rates were assessed by DNA Fragmentation ELISA or TUNEL staining. For the DNA fragmentation ELISA (Roche Diagnostics), R28 cells were seeded in a 96-well plate at a density of 1×10^5 cells per well and incubated with 100 μ l of conditioned medium for 4 h before being processed according to the manufacturer's instructions and as previously described (Ruebsam et al., 2018). The colorimetric signal was measured with a fluorescence plate reader in a FLUOstar OMEGA plate reader (BMG Labtech) with excitation at 405 and 490 nm.

For TUNEL staining, cells were seeded on glass coverslips as previously described. Following incubation, the

coverslips were fixed in 4% PFA and stained for TUNEL (DeadEnd Fluorometric TUNEL System, Promega) according to manufacturer's instructions. Briefly, the samples were incubated with fluorescent-labeled dUTP and TdT enzymes. The nuclei were visualized by Hoechst staining. Images were captured on a Leica DM6000 fluorescent microscope. Nuclei and TUNEL-positive cells were counted using ImageJ (Schneider et al., 2012), and data were analyzed using the GraphPad Prism software module (GraphPad Software).

For primary RGC, characterization of the primary cells was performed by immunostaining with RGC-specific markers, β 3-tubulin (Biolegend, catalog #801201), Neurofilament-H (NF-H; Millipore, catalog #NE1023), and RNA-binding protein with multiple splicing (RBPMS; Rodriguez et al., 2014; Genetex, catalog #GTX118169). For cell survival experiments, the coverslips were first subjected to TUNEL staining as described above. After TUNEL, the coverslips were immunostained with RBPMS antibody and secondary Alexa Fluor 594-labeled antibody (Invitrogen, A21207). All immunostainings were visualized, and images were captured using Leica DM6000 fluorescent microscope. Cells staining positive for RBPMS and both TUNEL and RBPMS were counted using the Imaris software module (Bitplane AG). The data were analyzed using GraphPad Prism (GraphPad Software).

Statistics

For immunoblot experiments, the data were normalized to the housekeeping signal as a control before analysis. ANOVA models with heterogeneous variances, adjusted for the replication of the experiment, were fit to the data to assess differences between test and control group. Analyses were performed using nonrepeated-measures ANOVA, followed by the Tukey's *post hoc* tests for multiple comparisons, whereas two-tailed *t* test was used for a single comparison. A *p* value <0.05 was considered significant. All experiments were conducted following the Association for Research in Vision and Ophthalmology Resolution on the Care and Use of Laboratory Animals and approved by the Institutional Animal Care and Use Committee of the University of Michigan (protocol no. PRO-00009143, approved 7/9/2019).

Results

Expression and secretion of α A-crystallin in MGCs

MGCs are instrumental in maintaining neuronal homeostasis in the retina, with defined functions ranging from the recycling of neurotransmitters to controlling ionic and water equilibrium (Dulle and Fort, 2016). Our previous work emphasized the upregulation of α A-crystallin in the glia and ganglion cell layers of retinal tissue from human donors with diabetes compared with nondiabetic controls. Furthermore, growth media from rMC-1 cells overexpressing α A-crystallin efficiently promoted survival of R28 cells under serum starvation-induced apoptotic stress (Ruebsam et al., 2018). To further investigate the role of α A-crystallin in MGCs, we compared the relative

expression of α A-crystallin in rMC-1 and primary MGCs isolated from AKO mice. Cells from AKO mice were used throughout this study to avoid potential confounding effect of endogenously expressed and induced WT α A-crystallin. Thus, cells lacking endogenous α A-crystallin expression were transfected with either EVs or vectors driving expression of the WT protein, the functionally enhanced phosphomimetic (T148D), or the nonphosphorylatable (T148A) analog, and α A-crystallin expression was verified by immunoblot.

As we previously reported, WT, 148A, and 148D α A-crystallin expressed well in transfected rMC-1. We also observed corresponding levels of secreted proteins in the cell culture media (conditioned media; Fig. 1A, left panel). Additionally, the expression of all three crystallin constructs was consistent in the cell lysate and conditioned media under normal conditions as well as under conditions of metabolic and "diabetes-like" stress (Fig. 1A, middle and right panel). Importantly, we also report that primary MGCs could be transfected with the same vectors, leading to expression levels and secretion comparable to those seen in rMC-1 (Fig. 1B). Similar to rMC-1, our data also clearly show that stress exposure does not affect the expression and secretion of any of our α A-crystallin constructs.

Neuroprotective potential of MGC-secreted α A-crystallin

Overexpression of α A-crystallin in multiple cell models has demonstrated its anti-apoptotic potential under conditions of stress-induced cell death (Liu et al., 2004; Pasupuleti et al., 2010; Losiewicz and Fort, 2011; Christopher et al., 2014; Ruebsam et al., 2018). To investigate the protective potential of MGC-secreted α A-crystallin, we tested the effect of conditioned media obtained from α A-crystallin transfected primary MGCs on retinal neurons subjected to metabolic stress. Supplementation of conditioned media from MGCs overexpressing WT and T148D crystallin highly promoted R28 cell survival under serum starvation-induced metabolic stress, as evidenced by the reduction in cell death by 45% and 37%, respectively. Similarly, in "diabetes-like" stress, conditioned media from MGCs overexpressing WT or 148D α A-crystallin resulted in 38% and 44% reduction in R28 cell death, respectively. Supportive of the key role of T148 phosphorylation, media from T148A overexpressing MGCs was ineffective in promoting R-28 cell survival in either stress (Fig. 2A,B). Immunoblot analysis of the cell lysate and conditioned media confirmed that this difference in protective effect was not because of lower levels of expression or secretion of T148A (Fig. 2C,D). We then tested the effect of conditioned media on primary, AKO mouse RGCs. As in R28 cells, supplementation of conditioned media from MGCs overexpressing WT and T148D crystallin highly promoted RGC survival under "diabetes-like" stress, while media from T148A overexpressing MGCs did not (Fig. 2E). Taken together, these data clearly demonstrate the neuroprotective potential of α A-crystallin and validate a paracrine role of MGC-secreted α A-crystallin in promoting neuronal cell survival under stress.

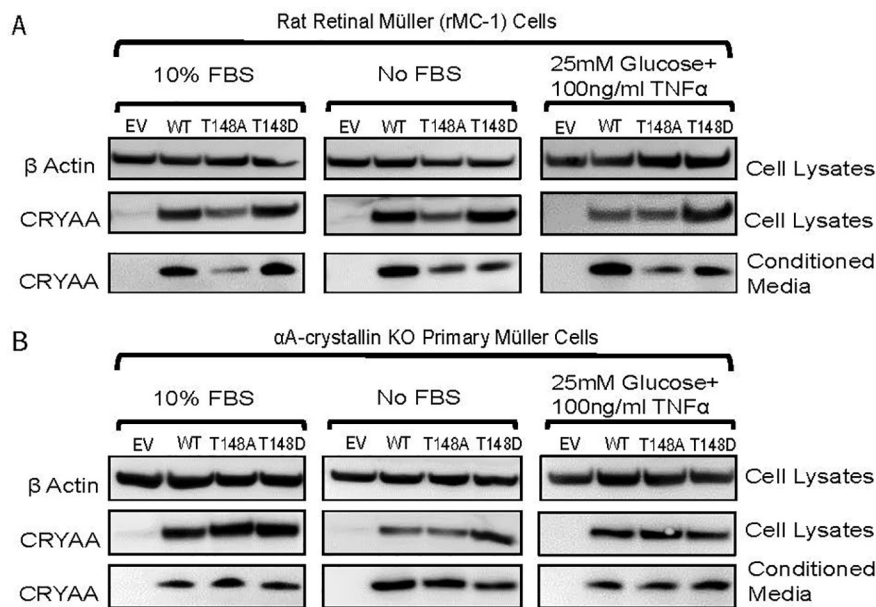


Figure 1. Expression and secretion of α A-crystallins by Müller cells. α A-crystallin (CRYAA) expression was observed in the cell lysates and the concentrated growth (conditioned) media. Rat retinal Müller (rMC-1) cells (**A**) and primary Müller cells (**B**) isolated from AKO mice were transfected with either EV, wild-type α A-crystallin (WT), α A-crystallin phosphomimetic (T148D), and the nonphosphorylatable form of α A-crystallin (T148A). Twenty-four hours after transfection, cells were either exposed to normal media (DMEM-NG + 10% FBS), serum starvation (DMEM-NG No FBS), or diabetic-like stress (DMEM-NG + 20 mM glucose + 100 ng/ml TNF α) for 4 h.

Characterization of recombinant α A-crystallins

Our experiments with secreted α A-crystallin highlighted the neuroprotective potential of extracellular WT and T148D crystallins in promoting neuronal cell survival exposed to serum starvation and “diabetes-like” conditions. This prompted us to assess whether our observation from the conditioned media experiments could be recapitulated using purified, recombinant α A-crystallin proteins. All three proteins, WT, T148A, and T148D were scaled up from BL21(DE3) pLysS cells expressing the specified constructs and purified by size exclusion chromatography. As shown in Figure 3A, the three purified proteins show a high degree of purity, as validated by SDS-PAGE and immunoblotting analyses. Because recombinant proteins purified from bacterial sources are often contaminated with bacterial endotoxins, which compromises their use *in vivo*, our protein preparations were treated with Triton X-114, a treatment routinely used to promote efficient endotoxin removal (Teodorowicz et al., 2017). Qualitative analysis of the recombinant protein preparations post-Triton X-114-mediated phase separation confirmed the >90% reduction in the total endotoxin content (Fig. 3B).

α A-crystallins were initially characterized in the eye lens as chaperone proteins, efficiently preventing nonspecific protein aggregation and promoting organ transparency. *In vitro*, we tested the relative chaperone function of WT, T148D, and T148A crystallins by employing aggregation kinetics assays. As previously shown, EDTA-induced aggregation of ADH was suppressed by α A-crystallins in a concentration-dependent manner (Fig. 3C). Consistent with enhancing α A-crystallin chaperone activity by its phosphorylation on T148, the T148D mutant was

significantly more effective at preventing ADH aggregation *in vitro* (Fig. 3D). While the WT α A-crystallin exhibited an IC₅₀ of 8 μ g, that of the T148D crystallin mutant was 4.4 μ g, demonstrating an increase in chaperone efficacy of 45%. The phosphorylation of α A-crystallin on T148, therefore, results in an enhancement of its chaperone function.

Stress-induced insolubility of α A-crystallin

WT, T148D, and T148A α A-crystallin expressed in R28 cells exhibited no differences in basal solubility (Fig. 4A). However, following 4 h of serum starvation, T148A trended toward higher insolubility, and T148D trended toward lower insolubility (data not shown), an effect confirmed and enhanced after 24 h of serum starvation (Fig. 4B). This observation indicates that phosphorylation on residue T148 plays a key role in promoting α A-crystallin’s function, including by reducing stress-induced insolubility.

T148 phosphorylation-dependent changes in oligomer size

α A-crystallin, along with its close relative α B-crystallin is known to exist as larger oligomers, we thus assessed how this phosphorylation impacts the oligomeric state of α A-crystallin. T148A α A-crystallin formed slightly larger oligomers (median 669 kDa) than the WT α A-crystallin (median 650 kDa), whereas T148D formed substantially smaller oligomers (median 613 kDa; Fig. 4C,D). These data are clearly supportive of the T148 phosphorylation state impacting oligomeric and potentially aggregate formation. This could also partially explain the solubility data

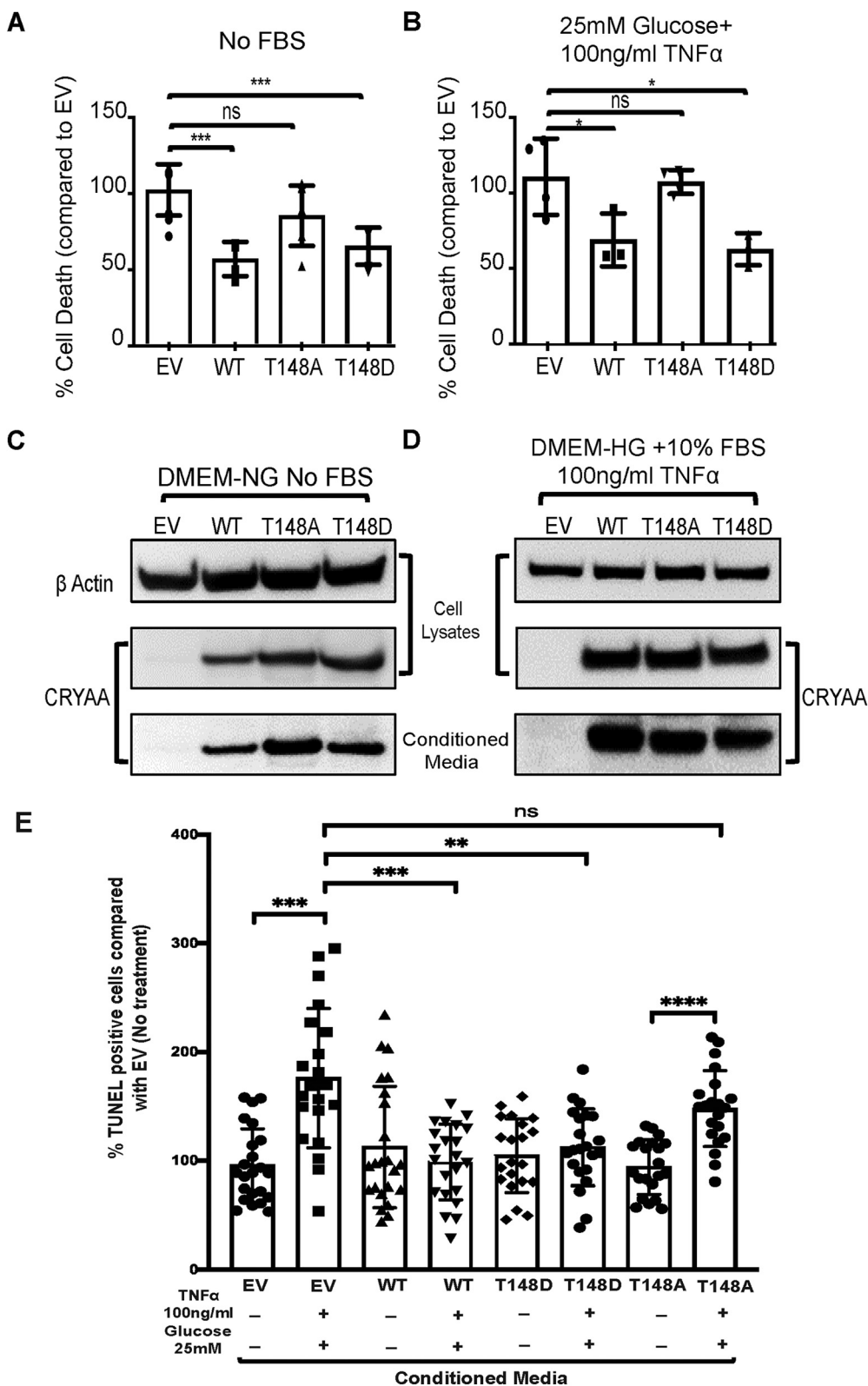


Figure 2. MGC-secreted α A-crystallin promotes neuronal cell survival under stress. The relative viability of rat retinal neuronal (R28) cells under (A) serum starvation stress and (B) “diabetes-like” condition, following supplementation of “conditioned” media from MGCs overexpressing α A-crystallin; * $p \leq 0.05$, ** $p \leq 0.01$, *** $p \leq 0.001$, significantly different from respective EV-transfected cells. Representative endpoint statistics result of DNA fragmentation ELISA from three replicates, with relative significance determined by one-way ANOVA followed by the Tukey’s *post hoc* tests. Immunoblotting analyses reveal a similar expression pattern of WT, T148A, and T148D crystallins in comparison to EV control under (C) serum starvation stress and (D) “diabetes-like” condition. E,

continued

The relative viability of primary, AKO mouse RGCs under basal and stress conditions following supplementation of “conditioned media” (CM) from MGCs overexpressing α A-crystallin. Representative endpoint statistics result of TUNEL from three to four fields from three coverslips per condition of three replicates, with relative significance determined by one-way ANOVA followed by Tukey’s *post hoc* tests. The data were expressed as mean \pm SD and statistically significant differences are reported; ** $p \leq 0.01$, *** $p \leq 0.001$, **** $p \leq 0.0001$, significantly different from respective EV-transfected cells.

as the decreased oligomeric size observed for the T148D mutant could promote the protein’s solubility under stress conditions. Together, the solubility and oligomeric data are consistent with the relative pro-survival potential of the mutants. As α A-crystallin becomes more insoluble and/or forms larger oligomers, less is likely available to serve normal chaperone and protective roles.

Uptake of recombinant α A-crystallins

Our previous study showed that conditioned media from MGCs expressing α A-crystallins WT and T148D

greatly reduced stress-induced R28 cell death. Before testing the neuroprotective efficacy of the different recombinant α A-crystallins, we first characterized the specificity of their uptake in R28 cells. As expected, supplementation of recombinant α A-crystallins to differentiated R28 cells showed a gradual increase in their uptake as a function of time (Fig. 5A). We then assessed the impact of stress on protein uptake and showed that serum starvation was associated with an increased uptake of all recombinant proteins, including T148A, although slightly less than WT and T148D α A-crystallins. Since T148A is taken up by the cells under stress, it can be asserted that the level of protein uptake is not solely responsible for the

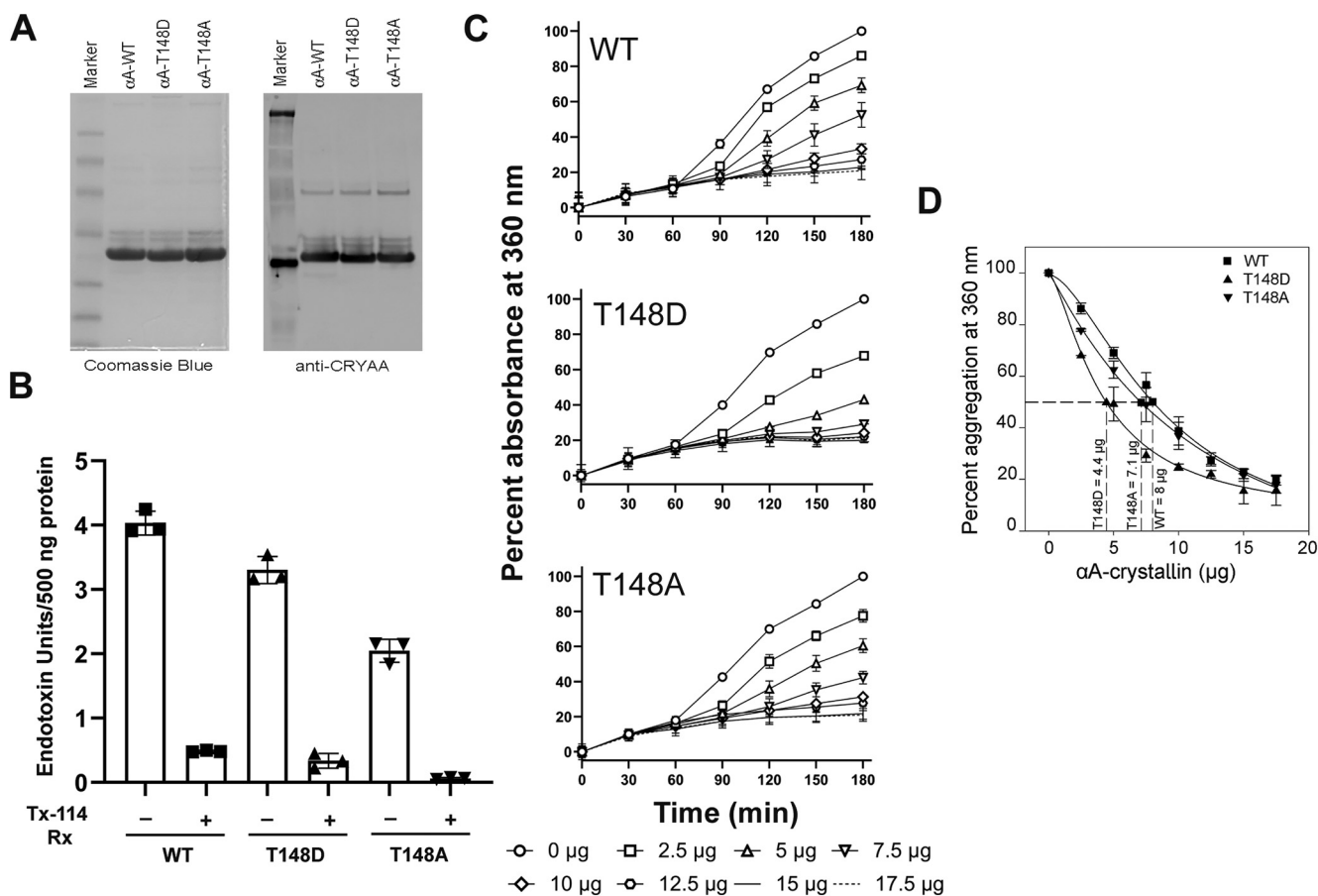


Figure 3. Characterization of recombinant α A-crystallins. **A**, BL21 purified α A-crystallins were analyzed for purity using SDS-PAGE (top panel) and Western blotting (bottom panel), respectively. **B**, Triton X-114 treatment of purified α A-crystallins drastically reduces their relative endotoxin content in comparison to nontreated controls; 500 ng of each of the purified proteins was subjected to endotoxin estimation using the LAL assay kit. **C**, Chaperone assays with ADH show a α A-crystallin concentration-dependent decrease in ADH aggregation, monitored as relative absorbance at 360 nm. The range of α A-crystallin concentrations used is depicted in the legend. **D**, *In vitro* chaperone activity assays reveal an enhanced chaperone function of T148D crystallin over α A-WT ($n = 3$). The data are represented as mean \pm SD and statistically significant differences are reported; ** $p \leq 0.01$, *** $p \leq 0.001$, **** $p \leq 0.0001$, significantly different from respective EV-transfected cells.

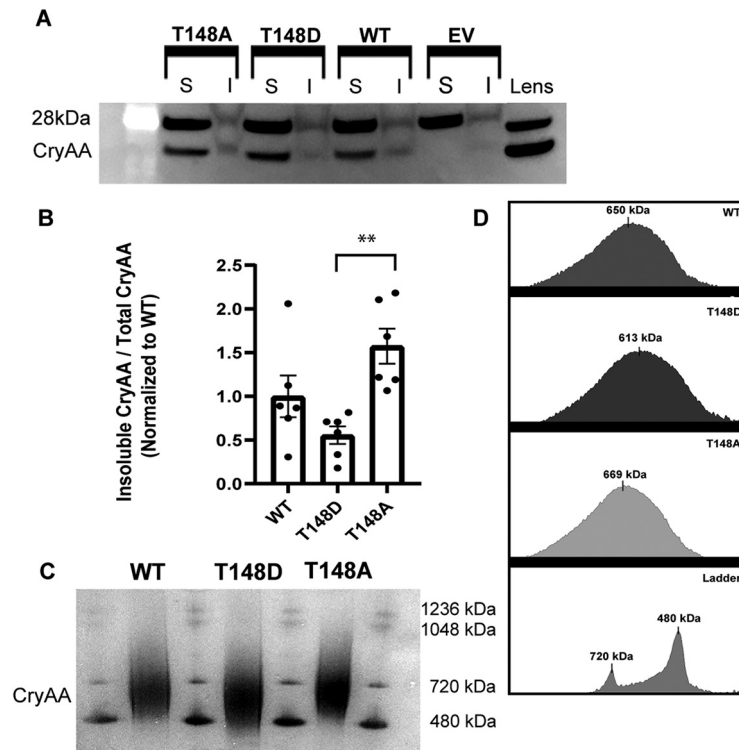


Figure 4. Phosphomimetic and nonphosphorylatable mutants of α A-crystallin exhibit differences in stress-induced solubility and oligomeric profile. **A**, Representative blot showing relative amounts of soluble (S) and insoluble (I) α A-crystallin after 24 h of serum deprivation. **B**, Solubility differences are expressed as a ratio of insoluble α A-crystallin to total α A-crystallin for each condition, normalized to WT. Data are represented as mean \pm SD. Statistical comparisons between groups were calculated by one-way ANOVA followed by Tukey's *post hoc* tests (** $p < 0.01$). **C**, Representative Native gel showing the oligomeric profiles of WT, T148D, and T148A α A-crystallin. **D**, Graphical representation of oligomeric profiles of the native gels (representative of 3 independent experiments). Median oligomer size for each recombinant protein is shown, rounded to the nearest kilodalton.

relative protective efficacy of the different recombinant proteins.

To eliminate the possibility that the increased uptake of recombinant proteins observed in serum starvation is facilitated by the lack of interactions that would otherwise occur with components of FBS, we spiked the growth media with saturating concentrations of BSA (1%). Supplementation of BSA did not impact protein uptake, suggesting the difference in uptake of proteins as part of the stress response (Fig. 5B). The level of protein uptake was further investigated by characterizing protein uptake under “diabetes-like” conditions (Fig. 5C). Protein uptake progressively increased in cells exposed to “diabetes-like” conditions (HG, HG+TNF α lanes) and is independent of T148 mutation (Fig. 5C). Collectively, our data demonstrate that T148 mutation does not dramatically impact its uptake by R28 cells in a way that could significantly affect its observed neuroprotective efficacy under stress.

Following the uptake assay of recombinant proteins, the R28 cells were further assessed for the internalization of these proteins. The obtained results have demonstrated the time-dependent marked expression of recombinant WT α A-crystallin in R-28 cells in the intact cell membrane during protease digestion. On the contrary, the intracellular access of protease in R-28 cells led to the complete digestion of WT α A-crystallin, confirming the

internalization of α A-crystallin recombinant proteins in cells on its extracellular supplementation (Fig. 5D).

Effect of α A-crystallin supplementation on neuronal cell viability

To test the effect of uptake of recombinant α A-crystallins on cell viability under conditions of stress, we sought to establish a dose–response effect of α A-crystallin concentration on R28 cell viability. External supplementation of WT α A-crystallin efficiently prevented serum starvation-induced R28 cell death in a dose-dependent manner (Fig. 6A) as validated by TUNEL staining. Approximately 60% reduction in R28 cell death was observed following incubation with 500 ng/ml WT α A-crystallin, and this dose was selected to assess the relative neuroprotective efficacy of T148D and T148A crystallins in comparison to WT. Figure 5B summarizes the relative efficacies of 500 ng/ml WT, T148D, and T148A crystallins in promoting R28 cell survival in response to serum starvation-induced apoptotic stress. Compared with control, incubation with 500 ng/ml T148D crystallin resulted in \sim 85% increased cell viability in comparison to WT (\sim 30%). Incubation with 500 ng/ml T148A did not promote R28 cell viability, further validating the key role of phosphorylation of α A-crystallin on T148 for its neuroprotective function (Fig. 6B).

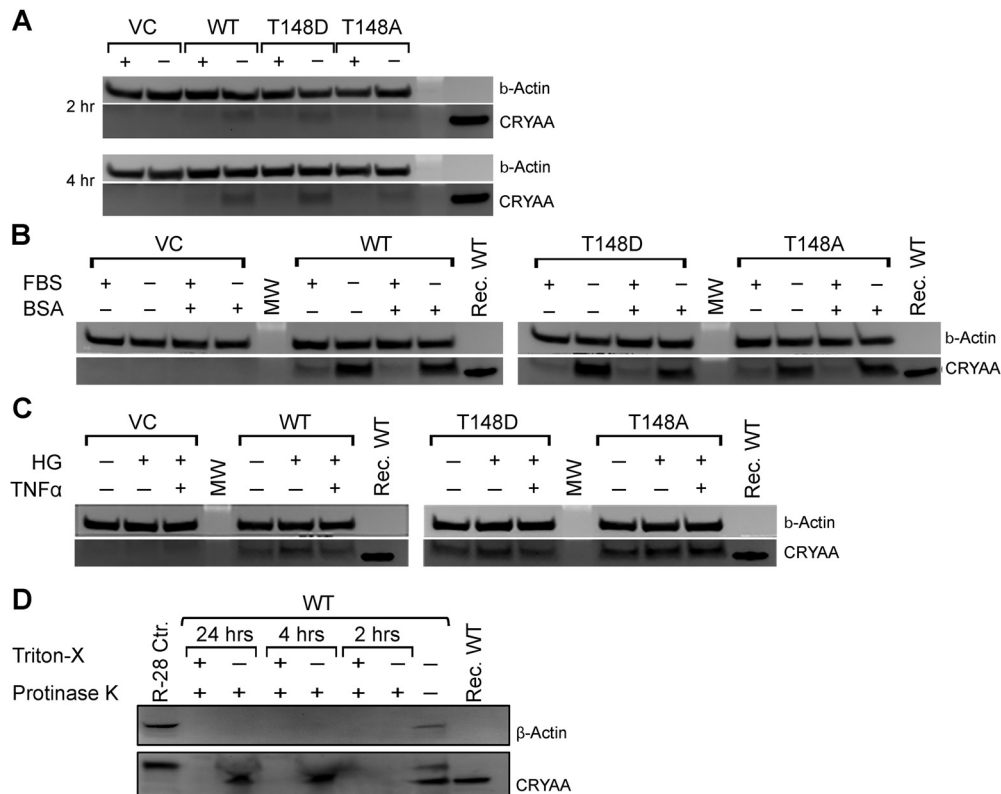


Figure 5. Selective uptake of recombinant α A-crystallins by R28 cells. All recombinant proteins were supplemented at a concentration of 500 ng/ml. **A**, Time-dependent uptake of recombinant α A-crystallins by R28 cells under serum starvation induced metabolic stress. Uptake of α A-crystallins in R28 cells was dependent on the presence of serum (**B**) and specificity of induced “diabetes-like” conditions (**C**) as mimicked by supplementation of DMEM-NG \pm 10% FBS \pm 1% BSA and DMEM-HG (25 mM) + 10% FBS \pm 100 ng/ml TNF α , respectively. **D**, Supplemented recombinant α A-crystallins were internalized in the R28 cells as assessed by Proteinase K susceptibility assay.

To confirm the neuroprotective efficacy of recombinant α A-crystallins in promoting neuronal cell survival, we further tested the ability of the recombinant protein supplementation on the survival of primary RGCs under “diabetes-like” conditions. As to avoid potential complications because of induction of endogenous α A-crystallin, RGCs were also isolated from the retinas of AKO mice, and the purity of the RGC preparation was assessed by staining for neuronal cell-specific markers (Fig. 7A–C). RGCs cell death under “diabetes-like” conditions was then analyzed by TUNEL and RBPMS co-staining. Consistent with the effect seen in differentiated R28 cells, supplementation with 500 ng/ml of WT or T148D α A-crystallins were highly protective of RGC cells exposed to metabolic stress (Fig. 7D,E). Also similar to what was observed in R28 cells, co-incubation with T148D was slightly more protective than WT while T148A crystallin completely failed to prevent cell death, emphasizing an inherent role of T148 phosphorylation on the neuroprotective efficacy of α A-crystallin.

Discussion

Our present study has shown that primary MGCs can secrete α A-crystallin and that secreted α A-crystallin presents with significant neuroprotective abilities for

retinal neuronal cells exposed to metabolic stresses. Supportive of a paracrine function of the secreted protein and therapeutic potential for α A-crystallin recombinant proteins was the demonstration of its increased uptake in stressed retinal neurons. Furthermore, analysis of the biochemical and biophysical properties of these recombinant proteins revealed an increased chaperone activity, smaller oligomer assembly, and an increased solubility of the T148D α A-phosphomimetic, consistent with its enhanced protective effect. Overall, our study shows that supplemented α A-crystallin recombinant proteins are neuroprotective for primary retinal neurons exposed to metabolic stress and that α A-crystallin T148D phosphomimetic mutant presents with enhanced therapeutic ability.

Müller glia has been shown to release trophic factors which regulate the various aspects of retinal neuronal circuitry during the process of synaptogenesis, differentiation, neuroprotection, and survival of photoreceptors and RGCs in the retina (de Melo Reis et al., 2008). MGCs, astrocytes, and microglia also play an important role in the metabolism, the phagocytosis of neuronal debris, the release of certain neurotransmitters, and the release of trophic factors apart from providing structural support (Vecino et al., 2016). They are also reported to be involved in the inflammation associated with the pathophysiology of diabetic retinopathy (DR), with special emphasis on the

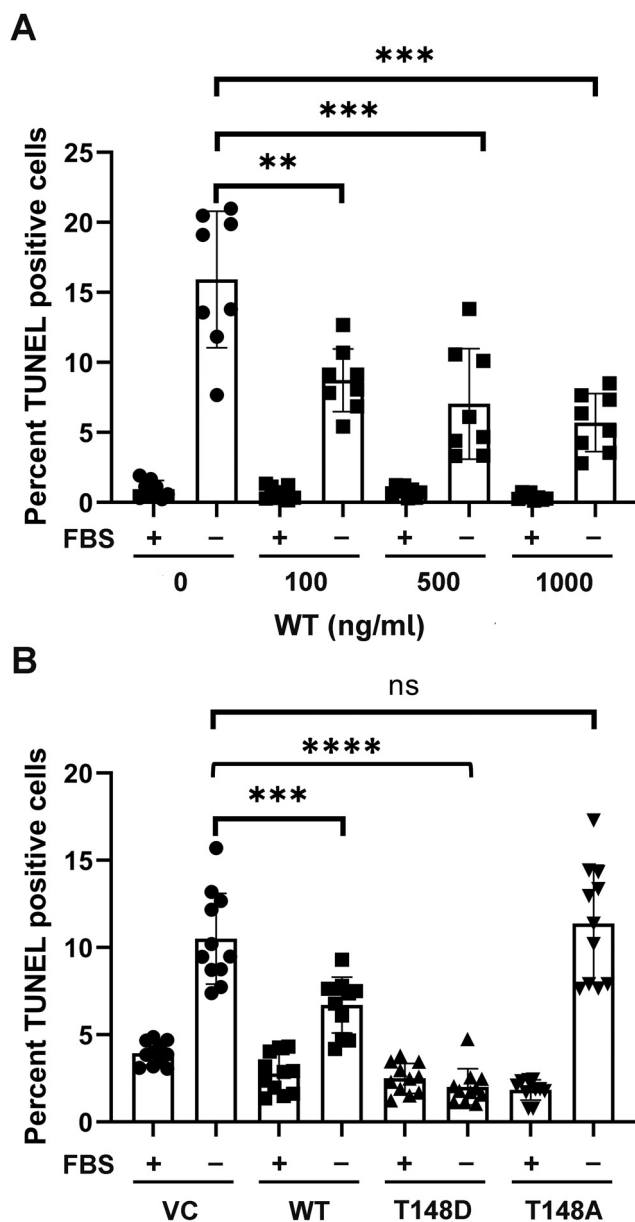


Figure 6. Effect of α A-crystallin supplementation on R28 cell viability under stress. All proteins were supplemented to R28 cells in DMEM-NG \pm 10% FBS. Following treatment, cell viability was assessed by TUNEL staining. **A**, Supplementation of WT suppresses serum starvation induced R28 cell death in a dose-dependent manner. **B**, T148D crystallin supplementation efficiently prevents R28 cell death under serum starvation induced metabolic stress compared with WT and T148A. Data are representative of four fields from three coverslips per condition and are represented as mean \pm SD from $***p \leq 0.0005$, $****p \leq 0.000005$, significantly different from respective EV.

functional relationships between glial cells and neurons (Rübsam et al., 2018). MGCs are an important source of numerous prosurvival factors under inflammatory conditions to exert neuroprotection, a potentially key point in patients with DR since they have higher levels of both inflammatory cytokines and neurotransmitters in their vitreous (Boss et al., 2017).

More recently, it also has been observed that nontoxin-induced Müller cell ablation is detrimental for neurons further supporting their necessity for neuronal viability (Fu et al., 2015). Stem cell-derived RGC-like cells survival was substantially enhanced when co-cultured with adult Müller cells or supplemented with Müller cell-conditioned media and significantly increased their neurite length (Pereiro et al., 2020). Confluent retinal MGC substrates and its conditioned medium were also reported to significantly increase the survival of cultured porcine RGCs (Garcia et al., 2002). Our current study has also demonstrated that retinal MGCs were able to secrete α A-crystallin, and incubation of either R28 retinal neuronal cells or primary AKO mouse RGCs with the conditioned media resulted in a significant decrease in the cell death induced by metabolic stress. Our study further confirmed the importance of T148 phosphorylation in the neuroprotective function of α A-crystallin as evidenced by the greater protection of retinal neurons by the phosphomimetic mutant conditioned media, while the nonphosphorylatable mutant conditioned media had no effect.

The effect of phosphorylation on the structure and function of α -crystallin has largely been studied for α B-crystallin, owing to its ubiquitous distribution and upregulation under stress and disease conditions. Studies investigating chaperone and anti-apoptotic activity of phosphorylated α B-crystallin mostly support a prochaperone and anti-apoptotic enhancer role of this phosphorylation under various cellular stresses while underlying a more complex function during development and cancer (Morrison et al., 2003; Jeong et al., 2012; Lee et al., 2016). In the meantime, the effect of phosphorylation on the chaperone function and the anti-apoptotic activity of α A-crystallin have evaded diligent investigation.

Takemoto first reported an increase in the phosphorylation of α A-crystallin on S122 from donor lens tissue in an age-dependent fashion (Takemoto, 1996). 2D gel electrophoresis on lens tissue of 14-week C57BL/6 mice identified T148 in addition to S122 as sites of phosphorylation on α A-crystallin (Reddy et al., 2006). A recent study from our lab was the first to identify T148 phosphorylation *in vivo* from retinal tissue samples from human donors (Ruebsam et al., 2018). The modification was dramatically reduced in donor samples with diabetes, suggesting an inherent role for T148 phosphorylation of α A-crystallin in the pathophysiology of DR. Overexpression of the α A-crystallin phosphomimetic T148D conferred protection to R28 neuronal cells to serum starvation-induced apoptosis over its nonphosphorylatable analog T148A. The current study, therefore, investigated the structural and functional consequences of T148 phosphorylation on α A-crystallin.

Mutations in α A-crystallin have been shown to influence its chaperone activity. Recombinant α A-T148D crystallin exhibited maximal efficiency in preventing EDTA-induced aggregation of ADH over WT and T148A crystallin. In conjunction with the observed cytoprotective effect observed in the earlier study, it shows that phosphorylation of T148 enhances the chaperone function and the associated anti-apoptotic function of retinal α A-crystallin. Both α -crystallin proteins have been shown to associate into

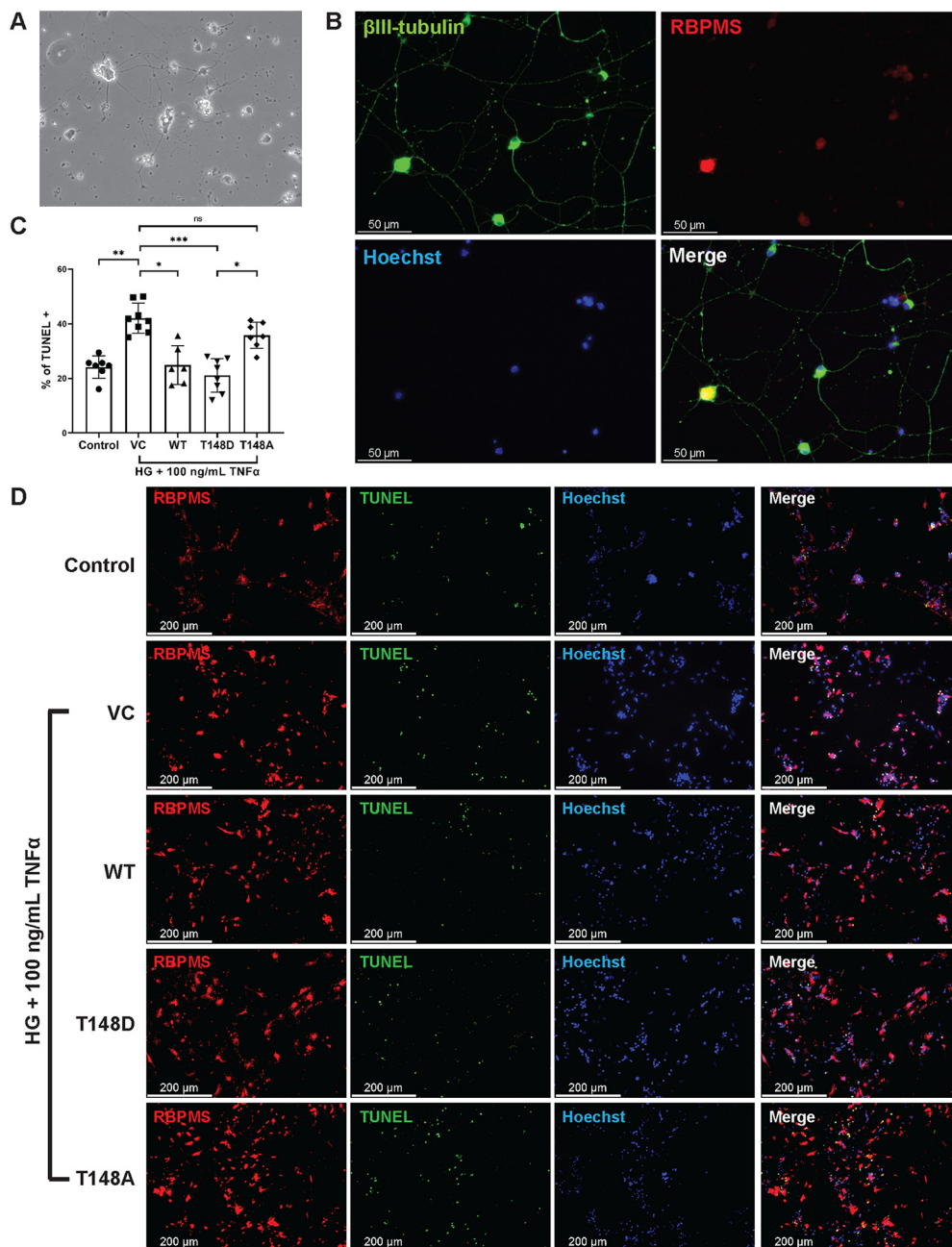


Figure 7. Exogenous α A-crystallin protects primary mice retinal ganglion cells under stress. **(A)** Seven days post seeding, the RGCs show prominent neural processes. **(B)** Immunofluorescence analyses highlight prominent staining for neuron-specific β III-tubulin (green), RBPMS (red) and Hoechst (blue). **(C)** Statistical analyses of RGC viability following exposure to stress. Percentage of apoptotic cells (TUNEL positive) in all RGCs (RBPMS positive) were analyzed. Data are represented as mean \pm S.D. Statistical comparisons between groups were calculated by One-Way ANOVA followed by Tukey post-hoc tests. (** $p \leq 0.01$), (***) $p \leq 0.001$, (****) $p \leq 0.0001$, significantly different from respective EV-transfected cells. **(D)** Vehicle control (VC), Recombinant wild type α A-crystallin (WT), α A-crystallin phosphomimetic (T148D), and the non-phosphorylatable form of α A-crystallin (T148A) were supplemented to RGCs at a 500 ng/ml concentration and incubated for 8 hours with 25 mM D-glucose (HG) and 100 ng/ml TNF α for 8 hours. Cells incubated with 5 mM glucose (NG) served as an experimental control. RGC survival under stress was assessed by TUNEL staining (green), and cells were later stained for RBPMS (red).

large oligomeric structures with molar masses ranging from 400 to 700 kDa. Our study has shown that phosphorylation of α A-crystallin was directly influencing the oligomeric assembly of α A-crystallin *in vitro*. Native gel analysis of recombinant α A-crystallins suggests a

change in the polydispersity profile of T148D crystallin, which showed an increased predisposition to form smaller oligomeric assemblies when compared with the WT and T148A α A-crystallin. Since the chaperone activity of α -crystallin has been shown to be modulated by

hydrophobic “patches” distributed along with its monomeric structure (Rao et al., 1998; Datta and Rao, 1999). The observed oligomeric shift in our present study could translate into a higher number of smaller oligomers exerting their chaperone action. Studies have also demonstrated that exposure of hydrophobic residues by structural modification facilitates chaperoning in α -crystallin proteins whereas the flexible carboxy-terminal extension also contributes to the chaperone activity by enhancing the solubility (Ruebsam et al., 2018; MacRae, 2000). The change in oligomeric profile was less pronounced for T148A crystallin, which was to be expected, as the recombinant WT crystallin protein used in this experiment was similarly unphosphorylated. However, this difference may become more pronounced in the cellular environment as WT α A-crystallin becomes phosphorylated and explains the lack of protective ability of T148A recombinant proteins *in vitro*.

α A-crystallin was originally described as an endogenous neuroprotective factor in retinal neurons, as exhibited in overexpression-based studies in hypoxic stress, or glaucomatous and other optic neuropathies (MacRae, 2000). Several studies have also demonstrated that α A-crystallin enhanced endogenous expression has potential as the therapeutic strategy to protect and rescue neurons from degeneration associated with metabolic or hypoxic stress (MacRae, 2000; Ying et al., 2014). Similarly, exogenous supplementation of α A-crystallin via intravitreal injections was associated with significantly decreased levels of GFAP in both the retina and the crush site following the third day of optic nerve crush injury and induced astrocytes architecture remodeling at the crush site (Piri et al., 2016). In the increased intraocular pressure model, intravitreal injection of α B-crystallin was also able to increase RGCs survival and function, as measured by functional photopic electroretinogram, retinal nerve fiber layer thickness, and RGC counts (Shao et al., 2016). Another study has reported the enhanced rate of survival in the axotomized axons beyond the crush site after a single intravitreal administration of α -crystallin at the time of axotomy (Anders et al., 2017). Together with these previous reports, the present study strongly supports the protective potential of functionally enhanced α A-crystallin recombinant proteins against neurodegeneration.

In conclusion, our study demonstrates for the first time that the exogenous supplementation of α A-crystallin, especially its functionally enhanced mutant, promotes retinal cell survival under metabolic stress. Altogether, our data show that α A-crystallin recombinant proteins present a strong potential to reduce neuronal cell death during acute stresses and that its T148D phosphomimetic mutant form could be an interesting option in chronic diseases such as diabetes, because of its improved biochemical properties and enhanced functionality. *In vivo* studies, including in diabetes models are now essential to further demonstrate the potential of this approach and validate the neuroprotective effect of functionally enhanced α A-crystallin recombinant proteins. These studies will also be key in characterizing the mechanisms of action of α A-crystallin *in vivo* to unveil α A-crystallin-specific

involvement in the regulation of neurosurvival and neuroinflammation.

References

- Anders F, Liu A, Mann C, Teister J, Lauzi J, Thanos S, Grus FH, Pfeiffer N, Prokosch V (2017) The small heat shock protein α -crystallin B shows neuroprotective properties in a glaucoma animal model. *Int J Mol Sci* 18:2418.
- Baba T, Oshitari T, Yamamoto S (2015) Level of vitreous alpha-B crystallin in eyes with rhegmatogenous retinal detachment. *Graefes Arch Clin Exp Ophthalmol* 253:1251–1254.
- Boss JD, Singh PK, Pandya HK, Tosi J, Kim C, Tewari A, Juzych MS, Abrams GW, Kumar A (2017) Assessment of neurotrophins and inflammatory mediators in vitreous of patients with diabetic retinopathy. *Invest Ophthalmol Vis Sci* 58:5594–5603.
- Brady JP, Garland D, Douglas-Tabor Y, Robison WG Jr, Groome A, Wawrousek EF (1997) Targeted disruption of the mouse alpha A-crystallin gene induces cataract and cytoplasmic inclusion bodies containing the small heat shock protein alpha B-crystallin. *Proc Natl Acad Sci USA* 94:884–889.
- Christopher KL, Pedler MG, Shieh B, Ammar DA, Petrash JM, Mueller NH (2014) Alpha-crystallin-mediated protection of lens cells against heat and oxidative stress-induced cell death. *Biochim Biophys Acta* 1843:309–315.
- Datta SA, Rao CM (1999) Differential temperature-dependent chaperone-like activity of alphaA- and alphaB-crystallin homoaggregates. *J Biol Chem* 274:34773–34778.
- de Melo Reis RA, Ventura AL, Schitine CS, de Mello MC, de Mello FG (2008) Müller glia as an active compartment modulating nervous activity in the vertebrate retina: neurotransmitters and trophic factors. *Neurochem Res* 33:1466–1474.
- Dubin RA, Gopal-Srivastava R, Wawrousek EF, Piatigorsky J (1991) Expression of the murine alpha B-crystallin gene in lens and skeletal muscle: identification of a muscle-preferred enhancer. *Mol Cell Biol* 11:4340–4349.
- Dulle JE, Fort PE (2016) Crystallins and neuroinflammation: the glial side of the story. *Biochim Biophys Acta* 1860:278–286.
- Fort PE, Freeman WM, Losiewicz MK, Singh RS, Gardner TW (2009) The retinal proteome in experimental diabetic retinopathy: up-regulation of crystallins and reversal by systemic and periocular insulin. *Mol Cell Proteomics* 8:767–779.
- Fu S, Dong S, Zhu M, Sherry DM, Wang C, You Z, Haigh JJ, Le YZ (2015) Müller glia are a major cellular source of survival signals for retinal neurons in diabetes. *Diabetes* 64:3554–3563.
- Garcia M, Forster V, Hicks D, Vecino E (2002) Effects of Muller glia on cell survival and neurogenesis in adult porcine retina *in vitro*. *Invest Ophthalmol Vis Sci* 43:3735–3743.
- Ghosh KS, Chauhan P (2019) Crystallins and their complexes. *Subcell Biochem* 93:439–460.
- Heinig N, Schumann U, Calzia D, Panfoli I, Ader M, Schmidt MHH, Funk RHW, Roehlecke C (2020) Photobiomodulation mediates neuroprotection against blue light induced retinal photoreceptor degeneration. *Int J Mol Sci* 21:2370.
- Heise EA, Marozas LM, Grafton SA, Green KM, Kirwin SJ, Fort PE (2013) Strain-independent increases of crystallin proteins in the retina of type 1 diabetic rats. *PLoS One* 8:e82520.
- Hejtmancik JF, Riazuddin SA, McGreal R, Liu W, Cvekl A, Shiels A (2015) Lens biology and biochemistry. *Prog Mol Biol Transl Sci* 134:169–201.
- Hicks D, Courtois Y (1990) The growth and behaviour of rat retinal Müller cells *in vitro*. 1. An improved method for isolation and culture. *Exp Eye Res* 51:119–129.
- Horwitz J (1992) Alpha-crystallin can function as a molecular chaperone. *Proc Natl Acad Sci USA* 89:10449–10453.
- Horwitz J, Bova MP, Ding LL, Haley DA, Stewart PL (1999) Lens α -crystallin: function and structure. *Eye (Lond)* 13:403–408.

- Hua Wang Y, Wu Wang D, Qin Yin Z (2020) Synergistic protection of RGCs by olfactory ensheathing cells and alpha-crystallin through regulation of the Akt/BAD Pathway. *J Fr Ophthalmol* 43:718–726.
- Jeong WJ, Rho JH, Yoon YG, Yoo SH, Jeong NY, Ryu WY, Ahn HB, Park WC, Rho SH, Yoon HS, Choi YH, Yoo YH (2012) Cytoplasmic and nuclear anti-apoptotic roles of α B-crystallin in retinal pigment epithelial cells. *PLoS One* 7:e45754.
- Kannan R, Sreekumar PG, Hinton DR (2016) Alpha crystallins in the retinal pigment epithelium and implications for the pathogenesis and treatment of age-related macular degeneration. *Biochim Biophys Acta* 1860:258–268.
- Kase S, Meghpara BB, Ishida S, Rao NA (2012) Expression of α -crystallin in the retina of human sympathetic ophthalmia. *Mol Med Rep* 5:395–399.
- Kim YH, Choi MY, Kim YS, Han JM, Lee JH, Park CH, Kang SS, Choi WS, Cho GJ (2007) Protein kinase C delta regulates anti-apoptotic alphaB-crystallin in the retina of type 2 diabetes. *Neurobiol Dis* 28:293–303.
- Lee SW, Rho JH, Lee SY, Yoo SH, Kim HY, Chung WT, Yoo YH (2016) Alpha B-crystallin protects rat articular chondrocytes against casein kinase II inhibition-induced apoptosis. *PLoS One* 11:e0166450.
- Liu JP, Schlosser R, Ma WY, Dong Z, Feng H, Liu L, Huang XQ, Liu Y, Li DW (2004) Human alphaA- and alphaB-crystallins prevent UVA-induced apoptosis through regulation of PKC α , RAF/MEK/ERK and AKT signaling pathways. *Exp Eye Res* 79:393–403.
- Losiewicz MK, Fort PE (2011) Diabetes impairs the neuroprotective properties of retinal alpha-crystallins. *Invest Ophthalmol Vis Sci* 52:5034–5042.
- MacRae TH (2000) Structure and function of small heat shock/alpha-crystallin proteins: established concepts and emerging ideas. *Cell Mol Life Sci* 57:899–913.
- Makley LN, McMenimen KA, DeVree BT, Goldman JW, McGlasson BN, Rajagopal P, Duniyak BM, McQuade TJ, Thompson AD, Sunahara R, Kleivit RE, Andley UP, Gestwicki JE (2015) Pharmacological chaperone for α -crystallin partially restores transparency in cataract models. *Science* 350:674–677.
- Masilamoni JG, Jesudason EP, Bharathi SN, Jayakumar R (2005) The protective effect of α -crystallin against acute inflammation in mice. *Biochim Biophys Acta* 1740:411–420.
- Morrison LE, Hoover HE, Thuerauf DJ, Glembofski CC (2003) Mimicking phosphorylation of alphaB-crystallin on serine-59 is necessary and sufficient to provide maximal protection of cardiac myocytes from apoptosis. *Circ Res* 92:203–211.
- Munemasa Y, Kwong JM, Caprioli J, Piri N (2009) The role of alphaA- and alphaB-crystallins in the survival of retinal ganglion cells after optic nerve axotomy. *Invest Ophthalmol Vis Sci* 50:3869–3875.
- Nath M, Shan Y, Myers AM, Fort PE (2021) HspB4/ α A-crystallin modulates neuroinflammation in the retina via the stress-specific inflammatory pathways. *J Clin Med* 10:2384.
- Pasupuleti N, Matsuyama S, Voss O, Doseff AI, Song K, Danielpour D, Nagaraj RH (2010) The anti-apoptotic function of human α A-crystallin is directly related to its chaperone activity. *Cell Death Dis* 1:e31.
- Pereiro X, Miltner AM, La Torre A, Vecino E (2020) Effects of adult Müller cells and their conditioned media on the survival of stem cell-derived retinal ganglion cells. *Cells* 9:1759.
- Piri N, Kwong JM, Caprioli J (2013) Crystallins in retinal ganglion cell survival and regeneration. *Mol Neurobiol* 48:819–828.
- Piri N, Kwong JM, Gu L, Caprioli J (2016) Heat shock proteins in the retina: focus on HSP70 and alpha crystallins in ganglion cell survival. *Prog Retin Eye Res* 52:22–46.
- Rao CM, Raman B, Ramakrishna T, Rajaraman K, Ghosh D, Datta S, Trivedi VD, Sukhaswami MB (1998) Structural perturbation of α -crystallin and its chaperone-like activity. *Int J Biol Macromol* 22:271–281.
- Rao NA, Saraswathy S, Wu GS, Katselis GS, Wawrousek EF, Bhat S (2008) Elevated retina-specific expression of the small heat shock protein, alphaA-crystallin, is associated with photoreceptor protection in experimental uveitis. *Invest Ophthalmol Vis Sci* 49:1161–1171.
- Reddy GB, Kumar PA, Kumar MS (2006) Chaperone-like activity and hydrophobicity of alpha-crystallin. *IUBMB Life* 58:632–641.
- Reddy VS, Raghu G, Reddy SS, Pasupulati AK, Suryanarayana P, Reddy GB (2013) Response of small heat shock proteins in diabetic rat retina. *Invest Ophthalmol Vis Sci* 54:7674–7682.
- Robinson ML, Overbeek PA (1996) Differential expression of alpha A- and alpha B-crystallin during murine ocular development. *Invest Ophthalmol Vis Sci* 37:2276–2284.
- Rodriguez AR, de Sevilla Müller LP, Brecha NC (2014) The RNA binding protein RBPMS is a selective marker of ganglion cells in the mammalian retina. *J Comp Neurol* 522:1411–1443.
- Rübsam A, Parikh S, Fort PE (2018) Role of inflammation in diabetic retinopathy. *Int J Mol Sci* 19:942.
- Ruebsam A, Dulle JE, Myers AM, Sakrikar D, Green KM, Khan NW, Schey K, Fort PE (2018) A specific phosphorylation regulates the protective role of α A-crystallin in diabetes. *JCI Insight* 3:e97919.
- Schmidt T, Bartelt-Kirbach B, Golenhofen N (2012) Phosphorylation-dependent subcellular localization of the small heat shock proteins HspB1/Hsp25 and HspB5/ α B-crystallin in cultured hippocampal neurons. *Histochem Cell Biol* 138:407–418.
- Schneider CA, Rasband WS, Eliceiri KW (2012) NIH Image to ImageJ: 25 years of image analysis. *Nat Methods* 9:671–675.
- Shao WY, Liu X, Gu XL, Ying X, Wu N, Xu HW, Wang Y (2016) Promotion of axon regeneration and inhibition of astrocyte activation by alpha A-crystallin on crushed optic nerve. *Int J Ophthalmol* 9:955–966.
- Shi Y, Su C, Wang JT, Du B, Dong LJ, Liu AH, Li XR (2015) Temporal and spatial changes in VEGF, alphaA- and alphaB-crystallin expression in a mouse model of oxygen-induced retinopathy. *Int J Clin Exp Med* 8:3349–3359.
- Takemoto LJ (1996) Differential phosphorylation of alpha-A crystallin in human lens of different age. *Exp Eye Res* 62:499–504.
- Teodorowicz M, Perdijk O, Verhoek I, Govers C, Savelkoul HFJ, Tang Y, Wichers H, Broersen K (2017) Optimized Triton X-114 assisted lipopolysaccharide (LPS) removal method reveals the immunomodulatory effect of food proteins. *PLoS One* 12:e0173778.
- Vecino E, Rodriguez FD, Ruzafa N, Pereiro X, Sharma SC (2016) Glia-neuron interactions in the mammalian retina. *Prog Retin Eye Res* 51:1–40.
- Wang YH, Wang DW, Wu N, Wang Y, Yin ZQ (2011) Alpha-crystallin promotes rat retinal neurite growth on myelin substrates in vitro. *Ophthalmic Res* 45:164–168.
- Winzeler A, Wang JT (2013) Purification and culture of retinal ganglion cells from rodents. *Cold Spring Harb Protoc* 2013:643–652.
- Yaung J, Kannan R, Wawrousek EF, Spee C, Sreekumar PG, Hinton DR (2008) Exacerbation of retinal degeneration in the absence of alpha crystallins in an in vivo model of chemically induced hypoxia. *Exp Eye Res* 86:355–365.
- Ying X, Zhang J, Wang Y, Wu N, Wang Y, Yew DT (2008) Alpha-crystallin protected axons from optic nerve degeneration after crushing in rats. *J Mol Neurosci* 35:253–258.
- Ying X, Peng Y, Zhang J, Wang X, Wu N, Zeng Y, Wang Y (2014) Endogenous α -crystallin inhibits expression of caspase-3 induced by hypoxia in retinal neurons. *Life Sci* 111:42–46.
- Zhang J, Liu J, Wu J, Li W, Chen Z, Yang L (2019) Progression of the role of CRYAB in signaling pathways and cancers. *Onco Targets Ther* 12:4129–4139.
- Zhu Z, Reiser G (2018) The small heat shock proteins, especially HspB4 and HspB5 are promising protectants in neurodegenerative diseases. *Neurochem Int* 115:69–79.