

# Local and population-level responses of Greater sage-grouse to oil and gas development and climatic variation in Wyoming

Rob R. Ramey II<sup>1</sup>, Joseph L. Thorley<sup>2</sup> and Alexander S. Ivey<sup>3</sup>

<sup>1</sup> Wildlife Science International, Nederland, CO, USA

<sup>2</sup> Poisson Consulting, Nelson, BC, Canada

<sup>3</sup> Terra Cognito GIS Services, Eldora, CO, USA

## ABSTRACT

**Background:** Spatial scale is important when studying ecological processes. The Greater sage-grouse (*Centrocercus urophasianus*) is a large sexually dimorphic tetraonid that is endemic to the sagebrush biome of western North America. The impacts of oil and gas (OAG) development at individual leks has been well-documented. However, no previous studies have quantified the population-level response.

**Methods:** Hierarchical models were used to estimate the effects of the areal disturbance due to well pads as well as climatic variation on individual lek counts and Greater sage-grouse populations (management units) over 32 years. The lek counts were analyzed using generalized linear mixed models while the management units were analyzed using Gompertz population dynamic models. The models were fitted using frequentist and Bayesian methods. An information-theoretic approach was used to identify the most important spatial scale and time lags. The relative importance of OAG and climate at the local and population-level scales was assessed using information-theoretic (Akaike's weights) and estimation (effect size) statistics.

**Results:** At the local scale, OAG was an important negative predictor of the lek count. At the population scale, there was only weak support for OAG as a predictor of density changes but the estimated impacts on the long-term carrying capacity were consistent with summation of the local impacts. Regional climatic variation, as indexed by the Pacific Decadal Oscillation, was an important positive predictor of density changes at both the local and population level (particularly in the most recent part of the time series).

**Conclusions:** Additional studies to reduce the uncertainty in the range of possible effects of OAG at the population scale are required. Wildlife agencies need to account for the effects of regional climatic variation when managing sage-grouse populations.

Submitted 16 March 2017  
Accepted 19 July 2018  
Published 14 August 2018

Corresponding authors  
Rob R. Ramey II,  
robroyrameyii@gmail.com  
Joseph L. Thorley,  
joe@poissonconsulting.ca

Academic editor  
Xavier Harrison

Additional Information and  
Declarations can be found on  
page 20

DOI 10.7717/peerj.5417

© Copyright  
2018 Ramey et al.

Distributed under  
Creative Commons CC-BY 4.0

OPEN ACCESS

**Subjects** Conservation Biology, Ecology, Natural Resource Management, Environmental Impacts  
**Keywords** Lek counts, Greater sage-grouse, Pacific Decadal Oscillation, Climate, Population dynamics, Oil and gas

## INTRODUCTION

If we study a system at an inappropriate scale, we may not detect its actual dynamics and patterns but may instead identify patterns that are artifacts of scale. Because we are clever at devising explanations of what we see, we may think we understand the system when we have not even observed it correctly (*Wiens, 1989*).

Effective conservation of a species requires an understanding of how human activities influence its distribution and abundance. Although much of science proceeds by experimental studies to understand the causal links between actions and responses, ethical, practical and statistical considerations typically prevent population-level experiments on species of concern. Consequently, many conservation-based ecological studies are forced to infer the population-level consequences of anthropogenic alterations from local gradients (*Fukami & Wardle, 2005*) in density (*Gill, Norris & Sutherland, 2001*), movement, habitat use, physiology, genetics, reproductive success or survival. However, local gradients may not accurately predict the population-level response (*Gill, Norris & Sutherland, 2001; Fodrie et al., 2014*).

The Greater sage-grouse (*Centrocercus urophasianus*, hereafter sage-grouse) is a large sexually dimorphic tetraonid that is endemic to the sagebrush (*Artemisia* spp.) biome of western North America (*Knick & Connelly, 2011*). Each spring, adult males aggregate in open areas called leks where they display for females. Fertilized females then nest on the ground among the sagebrush (*Holloran & Anderson, 2005*). Initially, the chicks feed on insects before switching to forbs. The adults predominantly feed on sagebrush, especially in the winter. Most males begin lekking 2 years after hatching. Mean peak counts of males on leks are commonly used as an abundance metric (*Connelly & Braun, 1997; Doherty, Naugle & Evans, 2010; Fedy & Aldridge, 2011*).

A multitude of studies have reported local negative effects of oil and gas (OAG) development on sage-grouse lek counts, movement, stress-levels and fitness components. The most frequently-reported phenomenon is the decline in lek counts with increasing densities of well pads (*Walker, Naugle & Doherty, 2007; Doherty, Naugle & Evans, 2010; Harju et al., 2010; Green, Aldridge & O'Donnell, 2016*). Reductions in fitness components such as lower nest initiation rates (*Lyon & Anderson, 2003*) and lower annual survival of yearlings reared in areas where OAG infrastructure is present (*Holloran, Kaiser & Hubert, 2010*) have been detected using radio-tracking. The development of global positioning system telemetry methods has facilitated the fitting of more sophisticated and realistic spatially-explicit habitat use models which suggest that nest and brood failure is influenced by proximity to anthropogenic features (*Dzialak et al., 2011*). More recently, experimental studies have suggested that noise alone can reduce lek attendance (*Blickley et al., 2012b*) and increase stress hormones (*Blickley, Blackwood & Patricelli, 2012a*).

However, to date no-one has examined whether sage-grouse population-level responses are consistent with the local studies. Although *Green, Aldridge & O'Donnell (2016)* state that they modeled sage-grouse populations, they use their population dynamic models to analyze the effects of OAG on changes in abundance at individual leks.

Even authors such as *Walker, Naugle & Doherty (2007)* and *Gamo & Beck (2017)* who analyzed aggregations of leks, group their leks by level of OAG development as opposed to population boundaries.

Although it has received less attention than OAG, climatic variation has also been shown to influence sage-grouse lek counts, survival, clutch size and nesting success (*Blomberg et al., 2012, 2014, 2017; Coates et al., 2016; Gibson et al., 2017*). This is not surprising, as there is a long and ecologically important history of studies on the influence of climatic variation on the population dynamics of tetraonids (*Moran, 1952, 1954; Ranta, Lindstrom & Linden, 1995; Lindström et al., 1996; Cattadori, Haydon & Hudson, 2005; Ludwig et al., 2006; Kvasnes et al., 2010; Selås et al., 2011, Viterbi et al., 2015; Ross et al., 2016*). Consequently, the current study also includes annual variation in regional climate as a potential predictor of sage-grouse population dynamics.

Previous studies of the effect of climatic variation on sage-grouse have used local temperature and precipitation data with mixed results (*Blomberg et al., 2012, 2014, 2017; Green, Aldridge & O'Donnell, 2016; Coates et al., 2016; Gibson et al., 2017*). However, large-scale climate indices often outperform local data in predicting population dynamics and ecological process (*Stenseth et al., 2002; Hallett et al., 2004*). The Pacific Decadal Oscillation (PDO), which is derived from the large-scale spatial pattern of sea surface temperature in the North Pacific Ocean (*Mantua et al., 1997*), is potentially the most important climatic process influencing the sagebrush biome (*Neilson et al., 2005*). Consequently, the PDO index was chosen as the climate indicator.

Wyoming was selected for the current study because it contains approximately 37% of the recent range-wide population of sage-grouse (*Copeland et al., 2009; Fedy et al., 2012*), has experienced substantial levels of OAG development dating to the late 1800s (*Braun, Oedekoven & Cameron, 2002*) and because the lek location and count data were available for research.

## METHODS

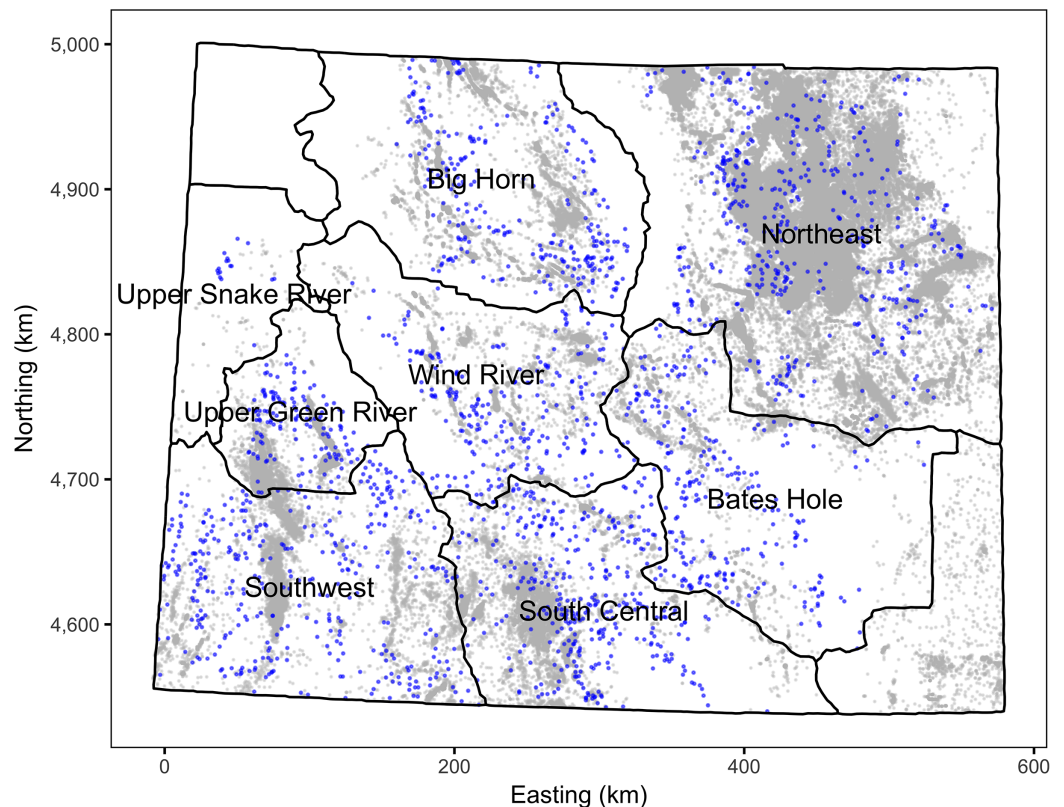
### Data preparation

#### *Sage-grouse data*

When multiple counts exist for the same lek in a single year, almost all authors take the maximum count (*Holloran, 2005; Walker, Naugle & Doherty, 2007; Harju et al., 2010; Fedy & Aldridge, 2011; Fedy & Doherty, 2011; Garton et al., 2011, 2015; Blickley et al., 2012b; Blomberg et al., 2013; Davis et al., 2014; Coates et al., 2016; Fremgen et al., 2016; Monroe, Edmunds & Aldridge, 2016; Green, Aldridge & O'Donnell, 2016*). The justification for using the maximum count is articulated by *Garton et al. (2011)* who state that,

... counts over the course of a single breeding season vary from a low at the beginning of the season, to peak in the middle, followed by a decline to the end, which necessitates using the maximum count from multiple counts across the entire season as the index.

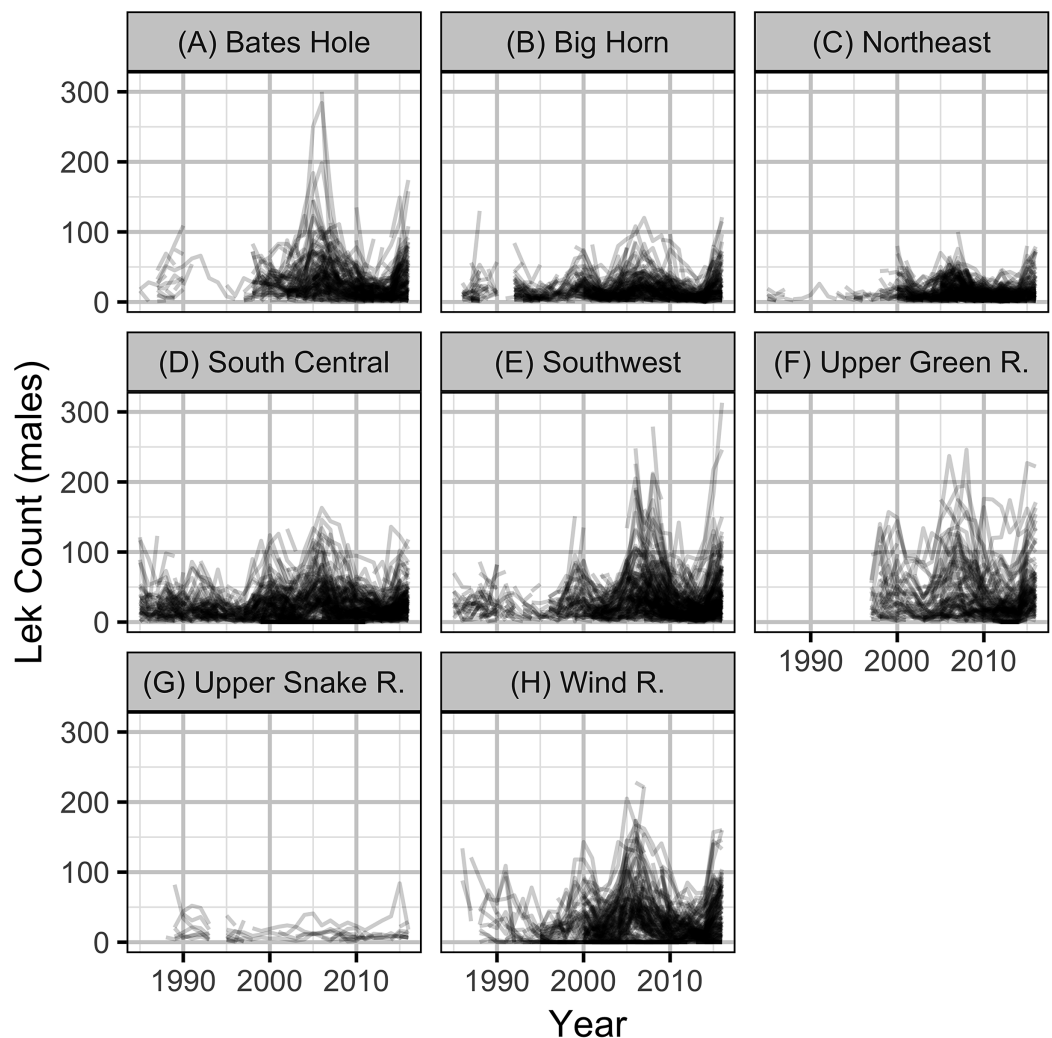
However, as noted by *Johnson & Rowland (2007)*, this results in a substantial upward bias at leks with multiple counts. To avoid this bias, several alternative approaches are



**Figure 1** Map of Wyoming and its working groups. Leks are indicated by blue points and well pads by gray points. Only leks and well pads that are included in the analyses are shown. The leks and well pads are not to scale. The projection is EPSG:26913. [Full-size](#) DOI: [10.7717/peerj.5417/fig-1](https://doi.org/10.7717/peerj.5417/fig-1)

available: exclude early and late counts and then either include the repeated counts in the model (Gregory & Beck, 2014) or take the mean of the repeated counts and/or explicitly model the change in attendance through time (Walsh et al., 2004) as is done for spawning salmon (Hilborn, Bue & Sharr, 1999). We excluded early and late counts and took the rounded mean of the repeated counts. However, as discussed below we also assessed the sensitivity of the results to the use of the rounded mean as opposed to maximum count.

The sage-grouse lek count and location data were provided by the State of Wyoming. After excluding male lek counts with unknown counts or dates or those before 1985 there were 88,771 records. To reduce potential biases, only the most reliable male lek counts were included in the analyses. In particular, only ground counts from leks that were checked for activity and were part of a survey or count were included (as per Wyoming Game and Fish guidelines). This reduced the number of records to 79,857. To ensure counts were close to the peak (see above), only data that were collected between April 1st and May 7th were included. This reduced the number of records to 65,439. Finally, lek counts for which the number of individuals of unknown sex were  $\geq 5\%$  of the number of males (suggesting unreliable identification) were excluded which left a total of 42,883 records. The leks with at least one remaining count are mapped in Fig. 1 and the associated mean male lek counts are plotted in Fig. 2.



**Figure 2** Mean counts of male sage-grouse at individual leks by year and working group (A–H).

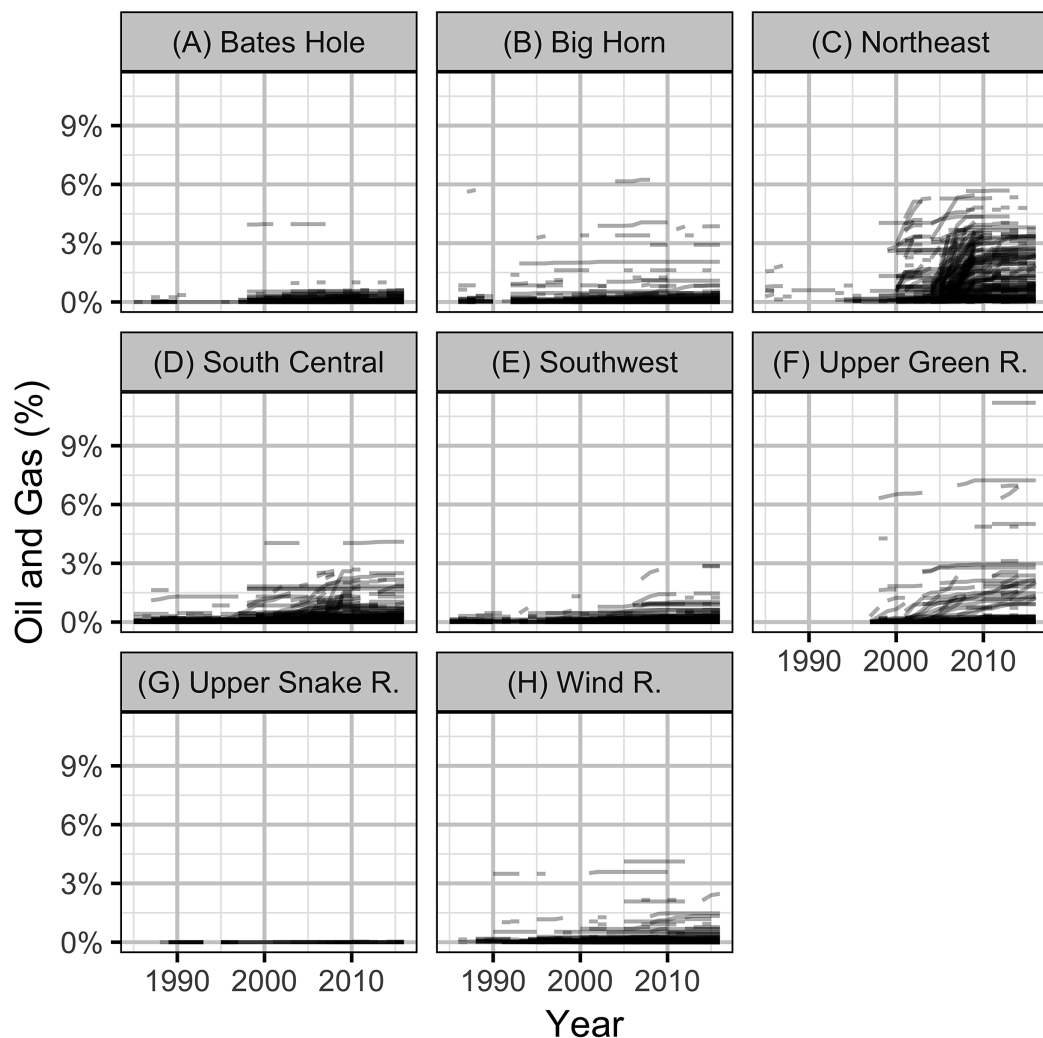
Full-size  DOI: 10.7717/peerj.5417/fig-2

The State of Wyoming utilizes eight regional sage-grouse working groups to facilitate local population management and data reporting, including lek counts and hunting harvest (Fig. 1, Christiansen & Belton, 2017). For the purposes of the current study, we also treat these working groups as if they are separate populations. The population densities (males per lek) were calculated by averaging the mean counts for individual leks for each working group in each year.

### **Oil and gas data**

Wyoming Oil and Gas Conservation Commission's conventional, coal-bed and injection well pad location and production data were downloaded from the Wyoming Geospatial Hub (<http://pathfinder.geospatialhub.org/datasets/>) at May 25, 2018 02:13 UTC.

Well pads without a provided spud date were excluded as were well pads constructed before 1900 or after 2016. The included well pads are mapped in Fig. 1.



**Figure 3** Percent areal disturbance due to well pads within 3.2 km of individual leks with one or more counts by year and working group (A–H). [Full-size !\[\]\(1679558f37f6db0dd8360a2a7e913e90\_img.jpg\) DOI: 10.7717/peerj.5417/fig-3](https://doi.org/10.7717/peerj.5417/fig-3)

The intensity of OAG development was quantified in terms of the proportional areal disturbance due to well pads within a specific distance of the leks. The areal disturbance was calculated at lek distances of 0.8, 1.6, 3.2 and 6.4 km with the areal disturbance of each well pad considered to have a radius of 60 m (Green, Aldridge & O'Donnell, 2016). The annual areal disturbances for individual leks with lek counts at 3.2 km are plotted in Fig. 3.

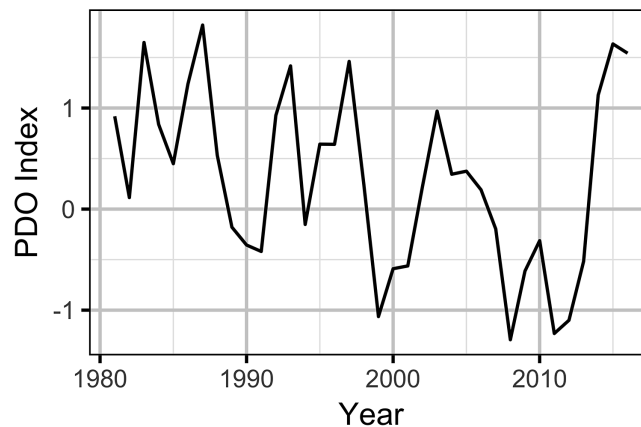
#### **Climatic data**

The PDO index (Trenberth & Hurrell, 1994; Mantua et al., 1997) data were queried from the rpdo R package (Fig. 4).

### **Statistical analysis**

#### **Local models**

The individual lek counts were analyzed using generalized linear mixed models (Bolker et al., 2009) with the standardized areal disturbance due to OAG and the PDO



**Figure 4** Pacific Decadal Oscillation index by year. Positive values indicate a warm phase and negative values a cool phase. [Full-size](#) DOI: 10.7717/peerj.5417/fig-4

index as fixed effects and year and lek as random effects. The areal disturbance and PDO index were standardized (centered and divided by the standard deviation (SD)) to facilitate comparison.

More formally, the lek count model is described by the following equations

$$M_{i,y} \sim \text{NegBin}(\mu_{i,y}, \phi) \quad (1)$$

$$\log(\mu_{i,y}) = \beta_0 + \beta_A \cdot \text{AREA}_{i,y} + \beta_P \cdot \text{PDO}_y + \alpha_{L_i} + \alpha_{Y_y} \quad (2)$$

$$\alpha_{L_i} \sim \text{Normal}(0, \sigma_L) \quad (3)$$

$$\alpha_{Y_y} \sim \text{Normal}(0, \sigma_Y) \quad (4)$$

where  $M_{i,y}$  is the rounded mean count of males for the  $i$ th lek in the  $y$ th year,  $\beta_A$  and  $\beta_P$  are the fixed effects of the standardized areal disturbance due to well pads ( $\text{AREA}_{i,y}$ ) and PDO index ( $\text{PDO}_y$ ) on the expected count ( $\mu_{i,y}$ ),  $\sigma_L$  and  $\sigma_Y$  are the SDs of the random effects of lek and year. In our parameterization of the negative binomial the parameter  $\phi$  controls the overdispersion scaled by the square of  $\mu$ , i.e.,

$$\text{SD}[M] = \sqrt{\mu + \phi \cdot \mu^2} \quad (5)$$

Key model parameters are also described in [Table 1](#).

To identify the most important spatial scale (distance from each lek when calculating the areal disturbance) and temporal lags, a total of 64 models were fitted to the lek count data representing all combinations of the four lek distances (0.8, 1.6, 3.2 and 6.4 km) and independent lags of 1–4 years in the areal disturbance ([Walker, Naugle & Doherty, 2007](#); [Doherty, Naugle & Evans, 2010](#); [Harju et al., 2010](#); [Gregory & Beck, 2014](#)) and PDO index. The relative importance of each spatial scale and temporal lag as a predictor of individual lek counts was assessed by calculating its Akaike's weight ( $w_i$ ) across all 64 models ([Burnham & Anderson, 2002](#)).

Once the model with the most important spatial scale and temporal lags was identified, the relative importance of  $\beta_A$  and  $\beta_P$  was quantified by calculating their Akaike's weights across the selected full model and the three reduced variants representing all

**Table 1** Descriptions of key model parameters.

Parameter	Description
$\beta_0$	The intercept for the log lek count or log population density.
$\beta_D$	The effect of population density on $\beta_0$ .
$\beta_P$	The effect of the standardized Pacific Decadal Oscillation index on $\beta_0$ .
$\beta_A$	The effect of the standardized areal disturbance due to well pads on $\beta_0$ .
$\phi$	The overdispersion term.
$\sigma_{\eta_{g,y}}$	The SD of the process error.
$\beta_N$	The intercept for the SD of the process error.
$\beta_L$	The effect of the log of the number of leks counted on $\beta_N$ .
$\sigma_G$	The SD of the random effect of working group on $\beta_D$ .
$\sigma_L$	The SD of the random effect of lek on $\beta_0$ .
$\sigma_Y$	The SD of the random effect of year on $\beta_0$ .

combinations of the two parameters ([Burnham & Anderson, 2002](#)) and by calculating their effect sizes with 95% confidence/credible intervals ([Bradford, Korman & Higgins, 2005](#); [Claridge-Chang & Assam, 2016](#)). The effect sizes, which represent the expected percent change in the lek count with an increase in the predictor of one SD, were calculated for the final full model and by averaging across all four models ([Burnham & Anderson, 2002](#); [Turek, 2015](#)). In addition, the conditional and marginal  $R^2$  values were calculated for the final full model on the observational (original) scale ([Nakagawa & Schielzeth, 2013](#)).

### Population models

The calculated annual population densities (mean males per lek) in each working group were analyzed using Gompertz population dynamic models (GPDMs) ([Garton et al., 2011](#)) with the standardized areal disturbance and PDO index as fixed effects and year and group as random effects. GPDMs were used because they incorporate density-dependence ([Dennis et al., 2006](#); [Knape & De Valpine, 2012](#)) and have performed well in explaining rates of change for sage-grouse in general and for Wyoming sage-grouse in particular ([Garton et al., 2011](#)).

The population model is described by the following equations

$$\log(M_{g,y}) \sim \text{Normal}(\log(\mu_{g,y}), \sigma_{\eta_{g,y}}) \quad (6)$$

$$\log(\mu_{g,y}) = \beta_0 + (\beta_D + 1 + \alpha_{Gg}) \cdot \log(M_{g,y-1}) + \beta_A \cdot \text{AREA}_{g,y} + \beta_P \cdot \text{PDO}_y + \alpha_{Yy} \quad (7)$$

$$\alpha_{Gg} \sim \text{Normal}(0, \sigma_G) \quad (8)$$

$$\alpha_{Yy} \sim \text{Normal}(0, \sigma_Y) \quad (9)$$

$$\log(\sigma_{\eta_{g,y}}) = \beta_N + \beta_L \cdot \log(\text{LEKS}_{g,y}) \quad (10)$$

where  $M_{g,y}$  is the density at the  $g$ th group in the  $y$ th year,  $\mu_{g,y}$  is the expected density,  $\beta_D$  is the typical density-dependence and  $\alpha_{Gg}$  is the group-level random effect on the density-dependence,  $\sigma_{\eta_{g,y}}$  is the expected process error ([Dennis et al., 2006](#)),  $\beta_N$  is the intercept for the log process error and  $\beta_L$  is the effect of the log of the number of leks



surveyed ( $LEKS_{g,y}$ ) on  $\beta_N$ . The other terms are approximately equivalent to those in the lek count model. The equivalence is only approximate as the terms in the population model act on the change in density (as opposed to density).

The carrying capacity, which represents the long-term expected density around which a population fluctuates (Dennis *et al.*, 2006), is given by

$$\log(N_\infty) = \frac{-(\beta_0 + \beta_A \cdot AREA_{g,y} + \beta_P \cdot PDO_y)}{\beta_D + \alpha_{Gg}}. \quad (11)$$

Preliminary analyses considered Gompertz state-space population models (Dennis *et al.*, 2006; Knappe & De Valpine, 2012) which estimate both process and observer error (Maunder, Deriso & Hanson, 2015). However, the models were unable to reliably estimate both error terms. As the observer error was estimated to be smaller than the process error and because ignoring process error can bias Akaike's information criterion based tests toward incorrectly accepting covariates (Maunder, Deriso & Hanson, 2015), we followed Garton *et al.* (2011) in assuming no observer error. The preliminary analyses indicated that fixing the observer error at zero had little effect on the results. The process error was allowed to vary by the logarithm of the number of leks surveyed, which varied from one to 214, to account for the additional stochasticity associated with smaller populations and/or lower coverage.

The primary question this study attempts to answer is whether the sage-grouse population-level responses to OAG are consistent with the local studies. Consequently, the average areal disturbance in each working group was calculated at the spatial scale that was most important in the local analyses. However, as the timing of effects could differ between the local count models and the population dynamic models, the Akaike's weight for each lag of 1–4 years in the areal disturbance and 1–4 years in the PDO index was calculated across the 16 models representing all lag combinations. Once the full model with the most important temporal lags had been identified, the relative importance of  $\beta_A$  and  $\beta_P$  was once again quantified from their effect sizes with 95% confidence intervals and their Akaike's weights across the full model and the three reduced variants.

To assess the sensitivity of the population model outputs to the inputs, a local, qualitative sensitivity analysis (Pianosi *et al.*, 2016) was conducted. More specifically, the effect sizes in the full model were estimated using (1) the maximum of the repeated counts (Garton *et al.*, 2011) as opposed to the mean (Johnson & Rowland, 2007) and (2) the data from 1997 and 2005 onward. The former period was used during preliminary analyses due to the availability of hunter-harvested wing count data (Braun & Schroeder, 2015). From 2005 onward regulatory and technological developments were introduced to reduce the impacts of OAG on sage-grouse and to make operations more efficient (Applegate & Owens, 2014). The effect sizes were adjusted for any differences in the SDs of the data. Once again, the conditional and marginal  $R^2$  values were calculated for the final full model on the observational scale (Nakagawa & Schielzeth, 2013).

## Predicted population impacts

To examine whether the population-level responses are consistent with the lek-level results, the expected effect of OAG on the long-term mean densities in each working group was calculated for the local and population models. In the case of the local model, the predicted population impacts represent the percent difference in the sum of the expected counts for the observed levels of OAG versus no OAG across all leks in the working group after accounting for annual and climatic effects. In the case of the population model, the predicted population impacts represent the percent difference in the expected carrying capacity with the observed levels of OAG versus no OAG accounting for annual and climatic effects.

## Statistical methods

For reasons of computational efficiency, the initial 64 local and 16 population-level models were fit using the frequentist method of maximum likelihood (ML; *Millar, 2011*). The Akaike's weights were calculated from the marginal Akaike's information criterion values corrected for small sample size (*Burnham & Anderson, 2002; Vaida & Blanchard, 2005; Greven & Kneib, 2010*). Model adequacy was assessed by plotting and analysis of the standardized residuals from the final full ML model (*Burnham & Anderson, 2002*) with the most important spatial scale and lags. As both the local and population models used log-link functions, the effect sizes (percent change in the response for an increase in one SD) were calculated from  $\exp(\beta) - 1$  where  $\beta$  is the fixed effect of interest or its upper or lower confidence limit. The ML effect sizes were calculated from the full model and averaged across the full model and three reduced variants (*Lukacs, Burnham & Anderson, 2010*).

To allow the predicted population impacts to be estimated with credible intervals, the final full models were also fitted using Bayesian methods (*Gelman et al., 2014*). The prior for all primary parameters was an uninformative (*Gelman et al., 2014*) normal distribution with a mean of 0 and a SD of 5. A total of 1,500 MCMC samples were drawn from the second halves of three chains. Convergence was confirmed by ensuring that  $R_{hat}$  was  $\leq 1.01$  (*Gelman et al., 2014*) and the effective sample size was  $\geq 1,000$  (*Brooks & Gelman, 1998*) for each structural parameter.

## Software

The data preparation, analysis and plotting were performed using R version 3.5.0 (*R Core Team, 2017*) and the R packages TMB (*Kristensen et al., 2016*) and rstan (*Stan Development Team, 2016*). The clean and tidy analysis data and R scripts are archived at <https://doi.org/10.5281/zenodo.837866>. The raw sage-grouse data, which provide the lek locational information, are available from the Wyoming Department of Fish and Game. The raw data are not required to replicate the analyses.

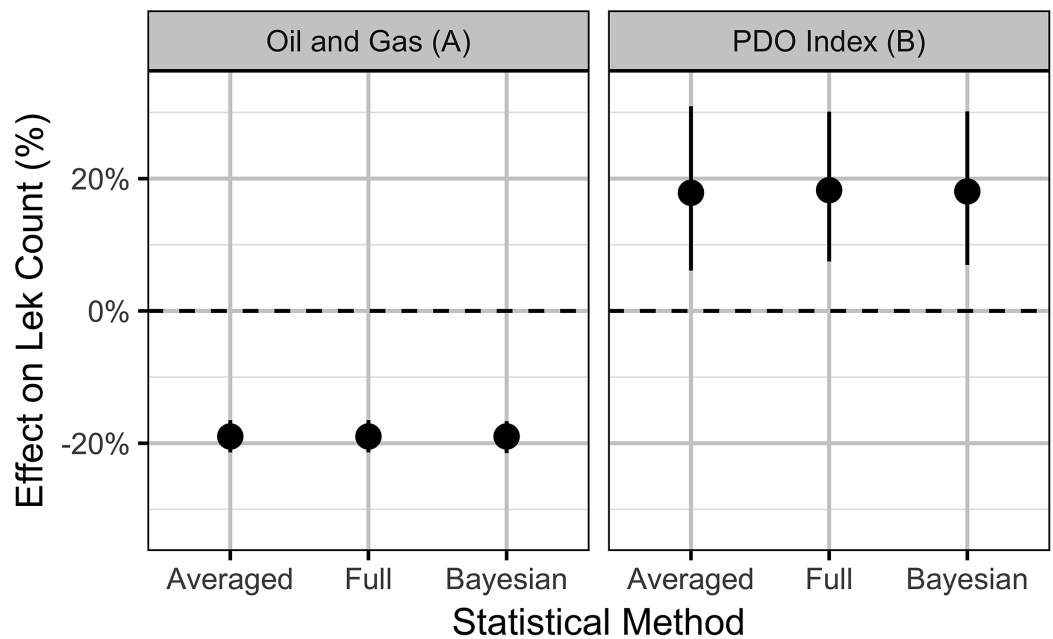
## RESULTS

### Local models

The Akaike weights for the spatial scales indicate that 3.2 km is unanimously supported ( $w_i = 1.00$ ) as the most important lek distance for predicting individual lek counts from the areal disturbance due to well pads (*Table S1*). The Akaike weights for the lags in

**Table 2** The relative importance ( $w_i$ ) of the lag in the Pacific Decadal Oscillation index density as a predictor of the count of male sage-grouse at individual leks across all models with a lek distance of 0.8, 1.6, 3.2, 6.4 and 12.8 km and the areal disturbance due to well pads independently lagged 1–4 years.

PDO lag (year)	Models	Proportion	$w_i$
2	16	0.25	0.73
3	16	0.25	0.18
4	16	0.25	0.05
1	16	0.25	0.04

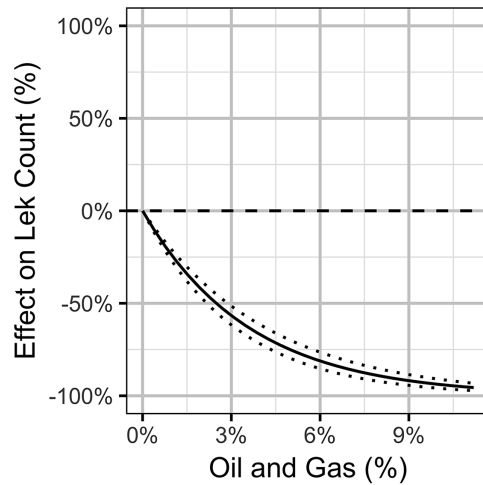


**Figure 5** Estimates (with 95% confidence intervals) of the effect of an increase in one SD (0.8%) in the areal disturbance due to well pads (A) within 3.2 km and (B) the Pacific Decadal Oscillation index (0.82). The effect is on the expected count of male sage-grouse at an individual lek.

Full-size DOI: [10.7717/peerj.5417/fig-5](https://doi.org/10.7717/peerj.5417/fig-5)

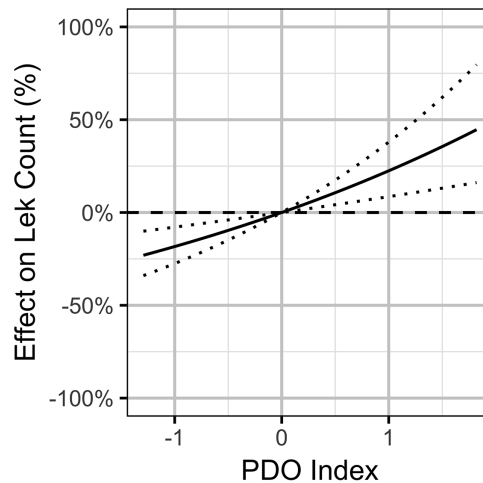
the areal disturbance provided close to unanimous support for a single candidate with the lag of 1 year receiving a weight of 0.99 (Table S2). The situation with the PDO index lags was less clear-cut (Table 2), although a lag of 2 years received the majority of the support ( $w_i = 0.73$ ). Consequently, the local model with a lek distance of 3.2 km and lags of 1 and 2 years in the areal disturbance due to well pads and the PDO index, respectively, was selected as the final model. The standardized residuals, with the exception of a small number of high outliers, were approximately normally distributed and displayed homogeneity of variance. Most leks had an expected count of male sage-grouse in the absence of OAG of approximately 10 birds (Fig. S1).

The Akaike weights for  $\beta_A$  ( $w_i = 1$ ) and  $\beta_P$  ( $w_i = 0.98$ ) across the final full model and the three reduced models indicate that both are very strongly supported as predictors of individual lek counts. The effect size estimates (Fig. 5) indicate that OAG and the PDO have large negative (Fig. 6) and positive (Fig. 7) impacts of similar magnitudes (just



**Figure 6** Bayesian estimates (with 95% credible intervals) of the effect of the percent areal disturbance due to oil and gas well pads on the expected count of male sage-grouse at a typical lek. The effect is the percent change in the expected count relative to no areal disturbance.

Full-size DOI: 10.7717/peerj.5417/fig-6



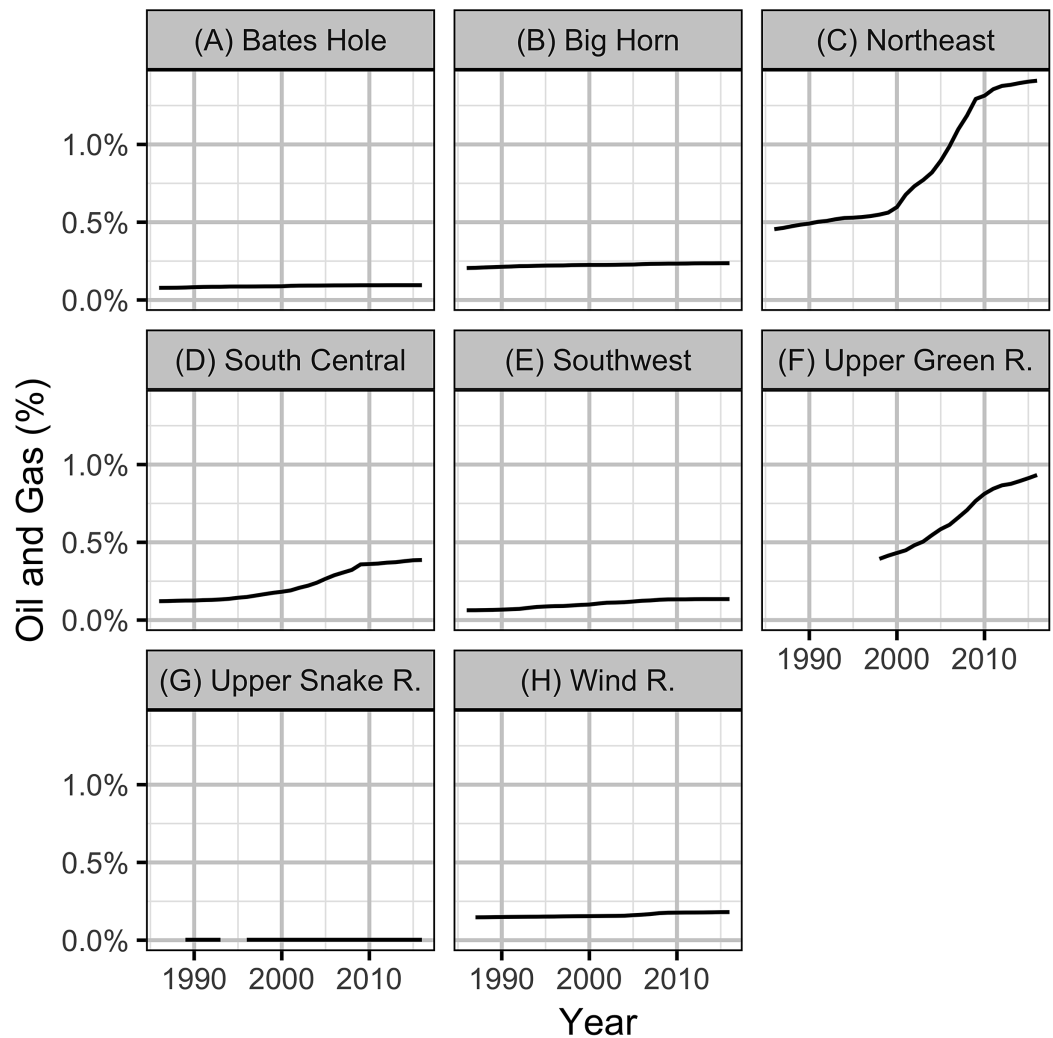
**Figure 7** Bayesian estimates (with 95% credible intervals) of the effect of the Pacific Decadal Oscillation index on the expected count of male sage-grouse at a typical lek. The effect is the percent change in the expected count relative to a Pacific Decadal Oscillation index value of 0.

Full-size DOI: 10.7717/peerj.5417/fig-7

under 20%) on the lek counts and that the estimates are insensitive to the statistical framework (ML or Bayesian) or model-averaging (Table S3). Despite the inclusion of the PDO index as an important predictor, there was still substantial remaining annual cyclical variation in the lek counts (Fig. S2) which was modeled by the random effect of year. The conditional and marginal  $R^2$  values were 64% and 2%, respectively.

### Population models

Based on the results of the local models, the level of OAG development in each working group was calculated in terms of the average areal disturbance due to well pads within



**Figure 8** Mean areal disturbances due to well pads within 3.2 km of all leks by year and working group (A-H). [Full-size !\[\]\(b345a1c4255362eec3746050dd71ccac\_img.jpg\) DOI: 10.7717/peerj.5417/fig-8](https://doi.org/10.7717/peerj.5417/fig-8)

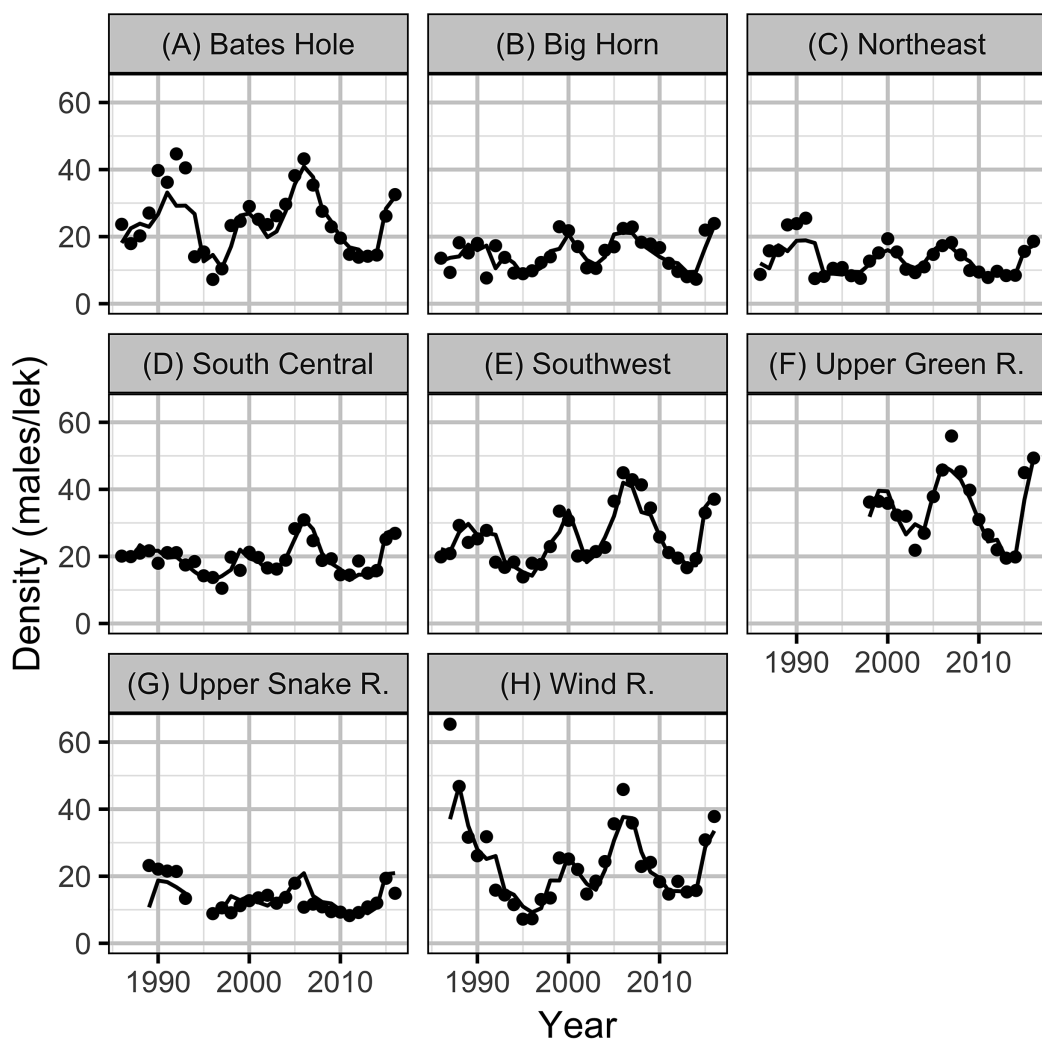
**Table 3** The relative importance ( $w_i$ ) of the lag in the areal disturbance due to well pads as a predictor of the change in the population density across all models with a lek distance of 3.2 km and the Pacific Decadal Oscillation index independently lagged 1–4 years.

Area lag (year)	Models	Proportion	$w_i$
1	4	0.25	0.29
2	4	0.25	0.27
3	4	0.25	0.24
4	4	0.25	0.20

3.2 km of each lek (Fig. 8). The Akaike weights for the lag in the areal disturbance (Table 3) were largely indifferent (0.29–0.20) although a lag of 1 year had the most support. The Akaike weights for the PDO index (Table 4) provided the majority of the support for a lag of 1 year ( $w_i = 0.53$ ). The model predictions provided a reasonable fit to the

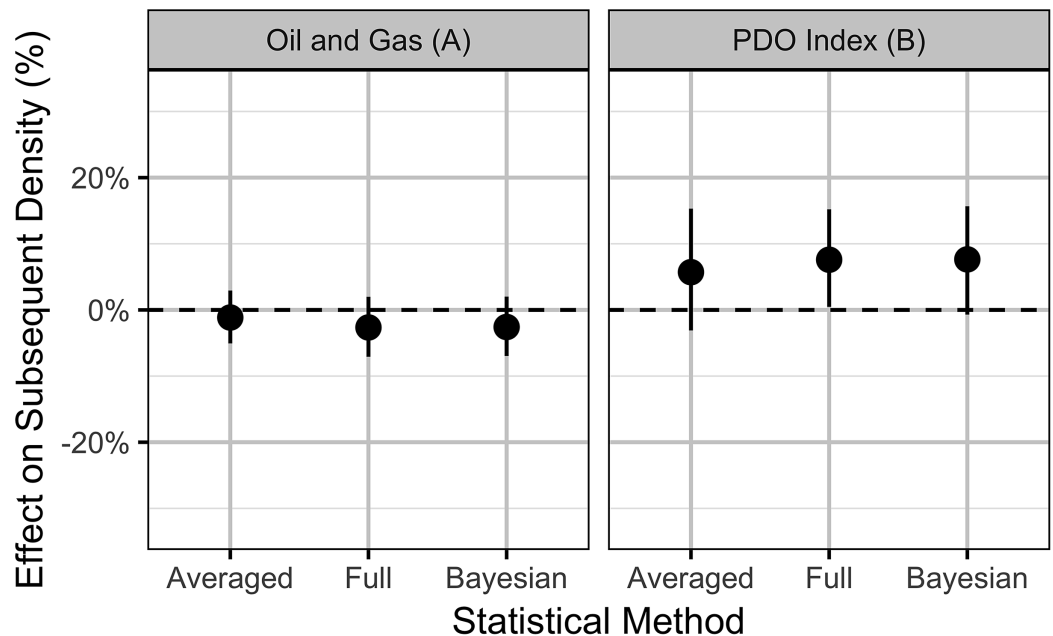
**Table 4** The relative importance ( $w_i$ ) of the lag in the Pacific Decadal Oscillation index as a predictor of the change in the population density across all models with a lek distance of 3.2 km and the areal disturbance due to well pads lagged 1–4 years.

PDO lag (year)	Models	Proportion	$w_i$
1	4	0.25	0.53
2	4	0.25	0.32
3	4	0.25	0.08
4	4	0.25	0.08



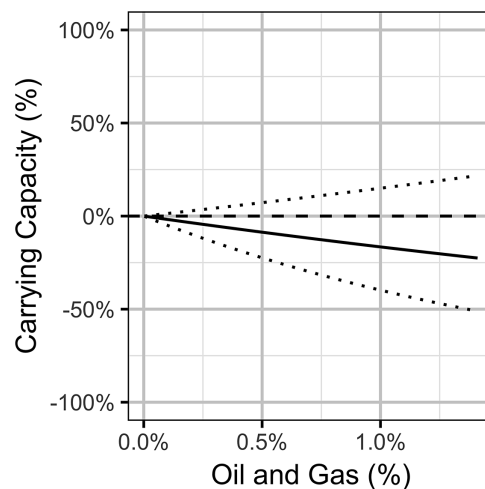
**Figure 9** Mean lek counts by year and working group (A–H). The solid line is the estimate of the population density based on the observed density in the previous year for the final full maximum likelihood model. [Full-size !\[\]\(b5d7dedcc48d5bfd2c56b334ed39e34f\_img.jpg\) DOI: 10.7717/peerj.5417/fig-9](https://doi.org/10.7717/peerj.5417/fig-9)

annual mean lek counts which exhibit large cyclical fluctuations (Fig. 9). The residuals were approximately normally distributed with homogeneity of variance. The carrying capacities in the absence of OAG varied between approximately 13 males per lek in the Upper Snake River to approximately 35 males per lek in the Upper Green River (Fig. S3).



**Figure 10** Estimates (with 95% confidence intervals) of the effect of an increase in one SD (0.31%) in the areal disturbance due to (A) well pads within 3.2 km of all leks and (B) the Pacific Decadal Oscillation index (0.86). The effect is on the expected subsequent population density.

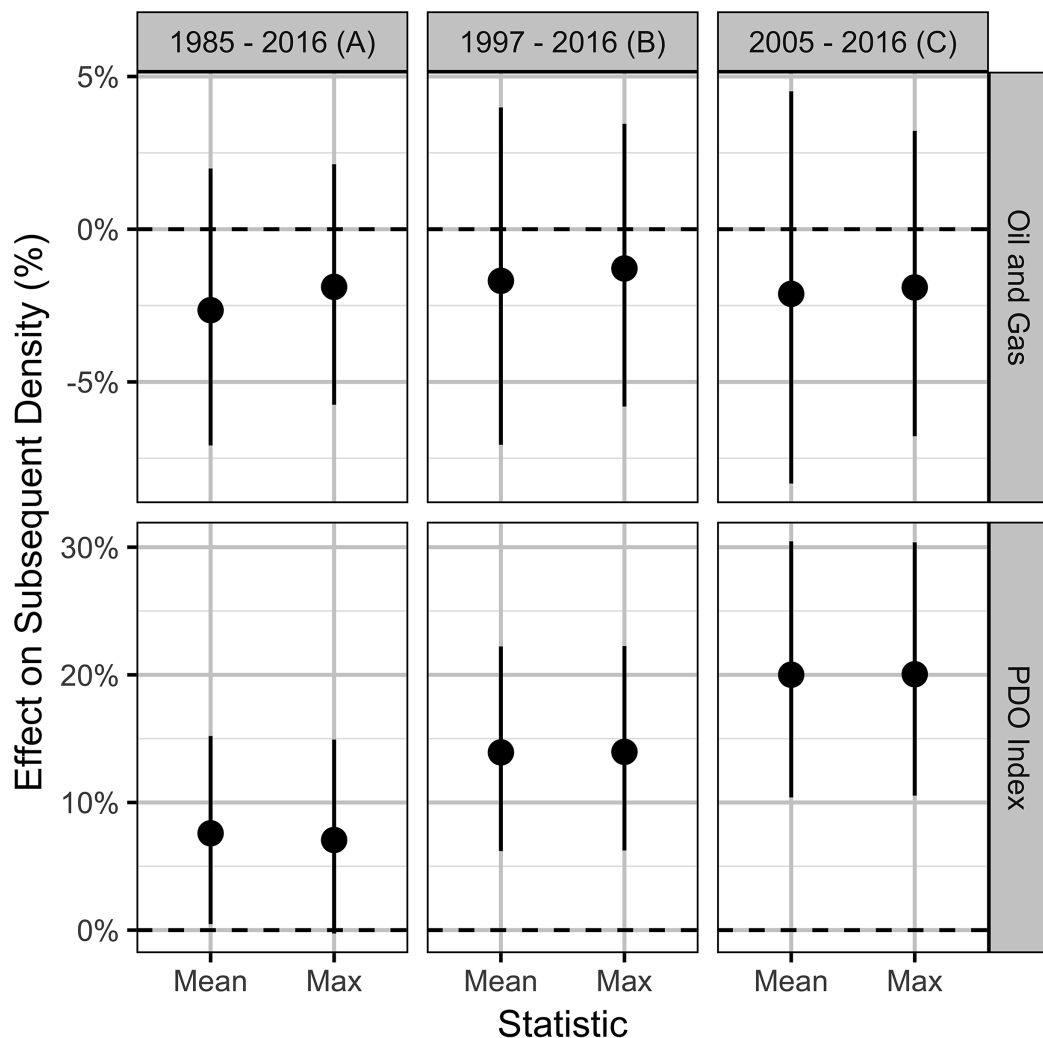
Full-size [DOI: 10.7717/peerj.5417/fig-10](https://doi.org/10.7717/peerj.5417/fig-10)



**Figure 11** Bayesian estimates (with 95% credible intervals) of the effect of the percent areal disturbance due to oil and gas well pads on the expected carrying capacity at a typical working group. The effect is the percent change in the expected carrying capacity relative to no areal disturbance.

Full-size [DOI: 10.7717/peerj.5417/fig-11](https://doi.org/10.7717/peerj.5417/fig-11)

The Akaike weights for  $\beta_A$  and  $\beta_P$  (Table 1) across the final full model and the three reduced models indicate that while the PDO index received moderate support ( $w_i = 0.74$ ) as a predictor of population changes, there was only weak support ( $w_i = 0.41$ ) for the areal disturbance. In addition, the effect size estimates (Fig. 10), which are sensitive to model-averaging but not the statistical framework (Table S4), indicate that

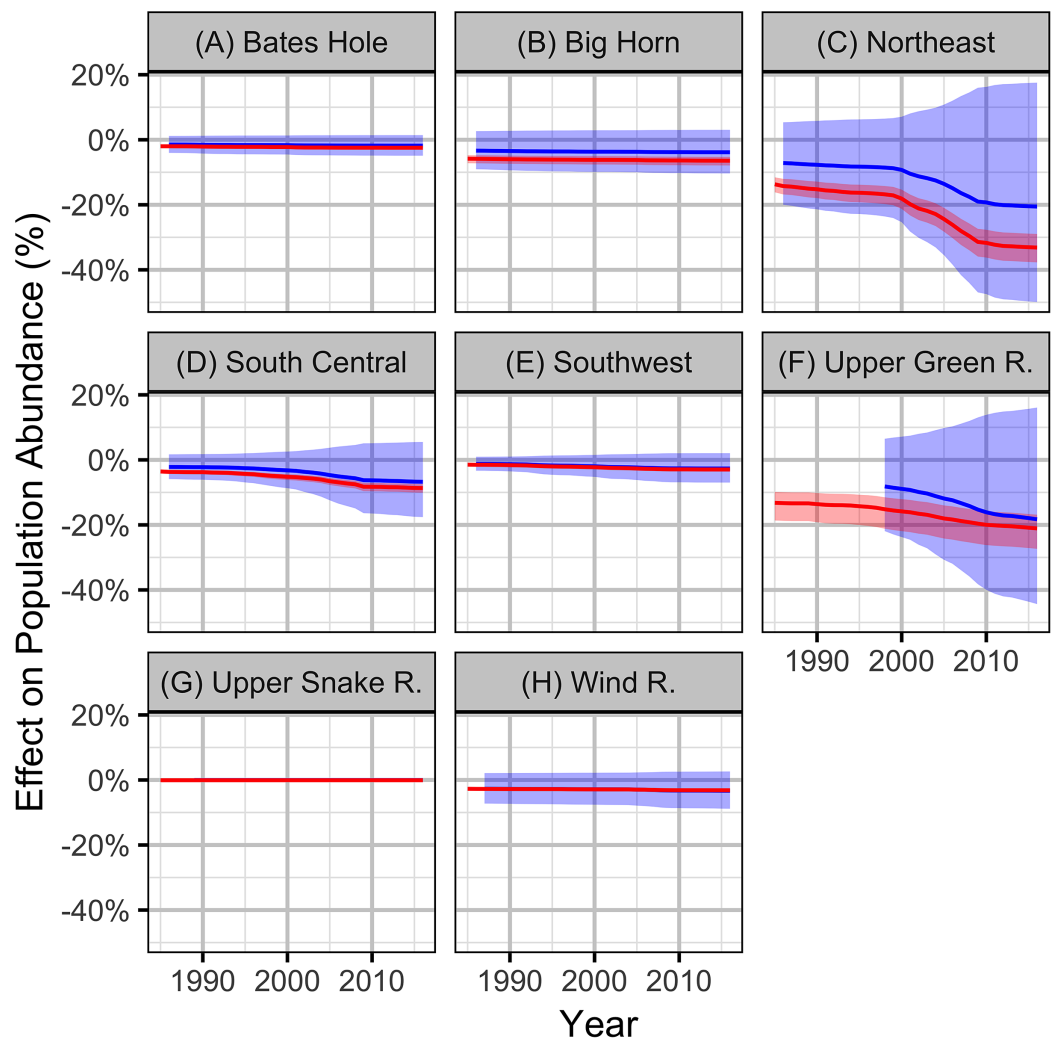


**Figure 12** Estimates (with 95% confidence intervals) of the effect of an increase in one SD (0.31%) in the areal disturbance due to well pads within 3.2 km of all leks and the Pacific Decadal Oscillation index (0.86) by the statistic used to combine repeated lek counts (mean or max) and the period (A–C). The effect is on the expected subsequent population density. When the time interval is limited to data from more recent years where a greater number of leks were surveyed and more frequently (i.e., data are of higher quality) the effect of oil and gas becomes less certain, while the PDO has a greater effect.

Full-size DOI: [10.7717/peerj.5417/fig-12](https://doi.org/10.7717/peerj.5417/fig-12)

while the PDO has a moderate positive influence (effect size of approximately 8%) the effect of OAG on the subsequent year's density is relatively small (effect size of  $-2.5\%$ , Fig. 10). However, despite its relatively small effect size, OAG may have a substantial effect ( $-20\%$  reduction) on the long-term carrying capacity in the most impacted working groups (Fig. 11). The reasons why are discussed below. The effect of the PDO on the carrying capacity (Fig. S4) is comparable to its effect on the counts at individual leks although there is much more uncertainty (Fig. 7). As for the local models, the random effect of year accounted for substantial unexplained annual cyclical variation (Fig. S5). The effect of density on the subsequent year's density (i.e., density-dependence) is





**Figure 13** Bayesian estimates (with 95% credible intervals) of the effect of the observed levels of oil and gas on the population abundance of sage-grouse based on the local (red) and population (blue) models by working group (A–H). [Full-size !\[\]\(fcc3264021d438d9732560e78099f674\_img.jpg\) DOI: 10.7717/peerj.5417/fig-13](https://doi.org/10.7717/peerj.5417/fig-13)

relatively minor: in a typical working group a reduction in the density to 10 males (half the carrying capacity) results in an average of just 13 males the following year (Fig. S6). The conditional and marginal  $R^2$  values were 83% and 57%, respectively.

The qualitative sensitivity analysis indicates that using the maximum as opposed to the rounded mean of the repeated lek counts has a negligible effect on the effect size estimates (Fig. 12). In contrast, the estimated effect of the PDO is strongest in the most recent data.

### Predicted population impacts

The predicted population impacts from the Bayesian full models indicate that although OAG has a relatively minor influence on the change in the population density, the effect on the carrying capacity could be consistent with summation of the local lek-level impacts (Fig. 13).

## DISCUSSION

### Climatic variation

A key conclusion of this paper is that regional climatic variation is responsible for the inter-decadal population fluctuations experienced by sage-grouse in Wyoming. More specifically, the PDO index is an important predictor of changes in sage-grouse numbers at both the lek and population level. This is perhaps unsurprising as the PDO has previously been used, in combination with the Atlantic multi-decadal oscillation and El Niño Southern Oscillation, to predict drought, drought-related fire frequency, and precipitation trends in the western USA and Rocky Mountains (*McCabe, Palecki & Betancourt, 2004; Schoennagel et al., 2007; Kitchen, 2015, Heyerdahl, Morgan & Riser, 2008*).

Although the current study does not identify the causal pathways through which sea surface temperatures in the North Pacific affect the sage-grouse population dynamics, we note that in Wyoming a positive PDO correlates with cooler, wetter weather, while a negative phase tends to produce warmer, drier conditions (*McCabe, Palecki & Betancourt, 2004*). We also note that given the relatively poor performance of local precipitation and temperature metrics (*Blomberg et al., 2012, 2014, 2017; Green, Aldridge & O'Donnell, 2016; Coates et al., 2016; Gibson et al., 2017*), the causal pathways may be complex and involve other organisms such as parasites (*Cattadori, Haydon & Hudson, 2005; Taylor et al., 2013*). In fact, the complexity of such pathways is one of the reasons that large-scale climate indices such as the PDO often outperform local weather data in predicting population dynamics and ecological process (*Stenseth et al., 2002; Hallett et al., 2004*). Additional studies to assess the explanatory value of the PDO index across the species range are needed (*Doherty et al., 2016*). It is noteworthy that the effect of the PDO index appears to be stronger in the most recent part of the time series at least at the population level. It is also worth noting that the strength of the population-level response appears to vary between working groups (i.e., the fluctuations in population density in Bates Hole are much larger than those in the Upper Snake River) and may have a latitudinal or altitudinal component.

The finding that the PDO index is an important driver of sage-grouse abundance in Wyoming has major implications for our understanding and conservation of the species. At the very least it is expected that any long-term population trends, including those due to OAG, will be better understood in the context of the PDO (*Ballard et al., 2003; McClure et al., 2012*). At best, it should allow regulators to account for and predict (*Stenseth et al., 2003*) the effects of climatic variation on sage-grouse population fluctuations, and therefore more effectively balance conservation efforts.

### Oil and gas

Ours is not the first study to consider whether local impacts potentially extend to population declines. Based on local declines, *Copeland et al. (2013)* estimated that sage-grouse populations in Wyoming will decrease by 14–29%, but that a conservation strategy that includes the protection of core areas could reduce the loss to between 9% and 15%, while *Copeland et al. (2009)* estimated that future OAG development in the

western USA will cause a long-term 7–19% decline in sage-grouse numbers relative to 2007. As argued by *Doherty, Naugle & Evans (2010)*, estimation of population-level impacts is important because it provides a biologically-based currency for quantifying the cost of OAG as well as the benefits of mitigation or conservation. Our study is the first to examine whether the actual population-level response is consistent with the local impacts.

Interpretation of the local lek-level results is relatively straightforward. The areal disturbance from OAG is a well-supported strongly negative predictor of male attendance at individual leks. The effect is much stronger at a lag of 1 year and when considering wells within a radius of 3.2 km. However, this should not be taken to imply that there are no delayed effects or disturbances from more distant wells. There is little uncertainty in the magnitude of the local declines: an areal disturbance of 3% is associated with an average local decline of 50%, while a 6% areal disturbance is associated with a local decline of 75%. When scaled up, the lek-level results suggest that by 2016 the impact of OAG was equivalent to the loss of 20% of the birds in the Northeast and 30% in the Upper Green River.

Interpretation of the population-level results is more complicated. The mean areal disturbance within 3.2 km of all the leks was a weakly supported predictor of the annual density change with a small effect size. Yet, the predicted population-level impacts were consistent with summation of the local impacts. This apparent paradox is due to three statistical phenomena. The first is that when the statistical power is low, an important variable can have low predictive value and therefore receive a low Akaike's weight. The second is that when density dependence is weak, a small effect on the expected density change can have a more substantial impact on the long-term carrying capacity. The third is that a standardized effect size can provide a misleading summary of the scale of the possible impact if the variation is highly skewed. The first two phenomena are related in that weak density dependence allows large population fluctuations to occur which obscure the inference of relationships and lower the power. All three factors are at play when dealing with sage-grouse in Wyoming. In summary, scaling up the local lek-level impacts produces estimates of population declines similar to those for the individual populations, however there is much uncertainty over the magnitude, if any, of the actual population-level response.

It may be possible to reduce the uncertainty in the population-level effects of OAG development through: the incorporation of additional variables (*Ramey, Brown & Blackgoat, 2011*), the incorporation of spatial variation in density-dependence (*LaMontagne, Irvine & Crone, 2002*), by modifying the population dynamic model so that it more closely matches the sage-grouse life history, and/or expanding the analysis to incorporate data from additional populations across a broader section of the species' range. To enable this, sage-grouse lek count data should be made available to researchers by all states and provinces, which is currently not the case.

## ACKNOWLEDGEMENTS

We thank T.J. Christiansen and the State of Wyoming for providing the lek count data. We also thank L.M. Brown and R.L. Irvine for comments and edits.

## ADDITIONAL INFORMATION AND DECLARATIONS

### Funding

Funding was provided by Wildlife Science International, Poisson Consulting, Terra Cognito GIS Services, and the American Petroleum Institute. The funders had no role in study design, data collection and analysis, decision to publish, or preparation of the manuscript.

### Grant Disclosures

The following grant information was disclosed by the authors:

Wildlife Science International, Poisson Consulting, Terra Cognito GIS Services, and the American Petroleum Institute.

### Competing Interests

Rob R. Ramey II is an employee of Wildlife Science International Inc., Nederland, Colorado, USA. Joseph L. Thorley is an employee of Poisson Consulting Ltd., Nelson, British Columbia, Canada. Alexander S. Ivey is an employee of Terra Cognito GIS Services Inc., Eldora, Colorado, USA. All three authors provide independent analytic services and scientific review to a wide variety of governmental, industrial and conservation organizations on a variety of different species.

### Author Contributions

- Rob R. Ramey II conceived and designed the experiments, performed the experiments, authored or reviewed drafts of the paper, approved the final draft.
- Joseph L. Thorley performed the experiments, analyzed the data, prepared figures and/or tables, authored or reviewed drafts of the paper, approved the final draft.
- Alexander S. Ivey conceived and designed the experiments, performed the experiments, analyzed the data, authored or reviewed drafts of the paper, approved the final draft.

### Data Availability

The following information was supplied regarding data availability:

Joe Thorley. (June 4, 2018). joethorley/bioRxiv-028274: resubmission to peerj (Version v0.0.7). Zenodo. <http://doi.org/10.5281/zenodo.1270665>.

### Supplemental Information

Supplemental information for this article can be found online at <http://dx.doi.org/10.7717/peerj.5417#supplemental-information>.

## REFERENCES

- Applegate DH, Owens NL. 2014. Oil and gas impacts on Wyoming's sage-grouse: summarizing the past and predicting the foreseeable future. *Human-Wildlife Interactions* 8(2):284.
- Ballard G, Geupel GR, Nur N, Gardali T. 2003. Long-term declines and decadal patterns in population trends of songbirds in Western North America, 1979–1999. *Condor* 105(4):737–755 DOI 10.1650/7131.

- Blickley JL, Blackwood D, Patricelli GL. 2012a.** Experimental evidence for the effects of chronic anthropogenic noise on abundance of greater sage-grouse at leks: greater sage-grouse abundance and noise. *Conservation Biology* **26**(3):461–471 DOI [10.1111/j.1523-1739.2012.01840.x](https://doi.org/10.1111/j.1523-1739.2012.01840.x).
- Blickley JL, Word KR, Krakauer AH, Phillips JL, Sells SN, Taff CC, Wingfield JC, Patricelli GL. 2012b.** Experimental chronic noise is related to elevated fecal corticosteroid metabolites in lekking male greater sage-grouse (*Centrocercus urophasianus*). *PLOS ONE* **7**(11):e50462 DOI [10.1371/journal.pone.0050462](https://doi.org/10.1371/journal.pone.0050462).
- Blomberg EJ, Gibson D, Atamian MT, Sedinger JS. 2014.** Individual and environmental effects on egg allocations of female greater sage-grouse. *Auk* **131**(4):507–523 DOI [10.1642/auk-14-32.1](https://doi.org/10.1642/auk-14-32.1).
- Blomberg EJ, Gibson D, Atamian MT, Sedinger JS. 2017.** Variable drivers of primary versus secondary nesting; density-dependence and drought effects on greater sage-grouse. *Journal of Avian Biology* **48**(6):827–836 DOI [10.1111/jav.00988](https://doi.org/10.1111/jav.00988).
- Blomberg EJ, Sedinger JS, Atamian MT, Nonne DV. 2012.** Characteristics of climate and landscape disturbance influence the dynamics of greater sage-grouse populations. *Ecosphere* **3**(6):art55 DOI [10.1890/es11-00304.1](https://doi.org/10.1890/es11-00304.1).
- Blomberg EJ, Sedinger JS, Nonne DV, Atamian MT. 2013.** Annual male lek attendance influences count-based population indices of greater sage-grouse: lek attendance of greater sage-grouse. *Journal of Wildlife Management* **77**(8):1583–1592 DOI [10.1002/jwmg.615](https://doi.org/10.1002/jwmg.615).
- Bolker BM, Brooks ME, Clark CJ, Geange SW, Poulsen JR, Stevens MHH, White J-SS. 2009.** Generalized linear mixed models: a practical guide for ecology and evolution. *Trends in Ecology & Evolution* **24**(3):127–135 DOI [10.1016/j.tree.2008.10.008](https://doi.org/10.1016/j.tree.2008.10.008).
- Bradford MJ, Korman J, Higgins PS. 2005.** Using confidence intervals to estimate the response of salmon populations (*Oncorhynchus* spp.) to experimental habitat alterations. *Canadian Journal of Fisheries and Aquatic Sciences* **62**(12):2716–2726 DOI [10.1139/f05-179](https://doi.org/10.1139/f05-179).
- Braun CE, Oedekoven OO, Cameron LA. 2002.** Oil and gas development in western North America: effects on sagebrush steppe avifauna with particular emphasis on sage-grouse. In: *Transactions of the 67th North American Wildlife and Natural Resources Conference*. Washington, D.C.: Wildlife Management Institute, 337–349.
- Braun CE, Schroeder MA. 2015.** Age and sex identification from wings of sage-grouse: sage-grouse age and sex classification. *Wildlife Society Bulletin* **39**(1):182–187 DOI [10.1002/wsb.517](https://doi.org/10.1002/wsb.517).
- Brooks SP, Gelman A. 1998.** General methods for monitoring convergence of iterative simulations. *Journal of Computational and Graphical Statistics* **7**(4):434–455 DOI [10.2307/1390675](https://doi.org/10.2307/1390675).
- Burnham KP, Anderson DR. 2002.** *Model Selection and Multimodel Inference: A Practical Information-Theoretic Approach*. Second Edition. New York: Springer.
- Cattadori IM, Haydon DT, Hudson PJ. 2005.** Parasites and climate synchronize red grouse populations. *Nature* **433**(7027):737–741 DOI [10.1038/nature03276](https://doi.org/10.1038/nature03276).
- Christiansen TJ, Belton LR. 2017.** Wyoming sage-grouse working groups: lessons learned. *Human-Wildlife Interactions* **11**(3):274–286.
- Claridge-Chang A, Assam PN. 2016.** Estimation statistics should replace significance testing. *Nature Methods* **13**(2):108–109 DOI [10.1038/nmeth.3729](https://doi.org/10.1038/nmeth.3729).
- Coates PS, Ricca MA, Prochazka BG, Brooks ML, Doherty KE, Kroger T, Blomberg EJ, Hagen CA, Casazza ML. 2016.** Wildfire, climate, and invasive grass interactions negatively impact an indicator species by reshaping sagebrush ecosystems. *Proceedings of the National Academy of Sciences of the United States of America* **113**(45):12745–12750 DOI [10.1073/pnas.1606898113](https://doi.org/10.1073/pnas.1606898113).

- Connelly JW, Braun CE. 1997. Long-term changes in sage grouse *Centrocercus urophasianus* populations in western North America. *Wildlife Biology* 3(1):229–234 DOI 10.2981/wlb.1997.028.
- Copeland HE, Doherty KE, Naugle DE, Pocewicz A, Kiesecker JM. 2009. Mapping oil and gas development potential in the US intermountain west and estimating impacts to species. *PLOS ONE* 4(10):e7400 DOI 10.1371/journal.pone.0007400.
- Copeland HE, Pocewicz A, Naugle DE, Griffiths T, Keinath D, Evans J, Platt J. 2013. Measuring the effectiveness of conservation: a novel framework to quantify the benefits of sage-grouse conservation policy and easements in Wyoming. *PLOS ONE* 8(6):e67261 DOI 10.1371/journal.pone.0067261.
- Davis AJ, Hooten MB, Phillips ML, Doherty PF. 2014. An integrated modeling approach to estimating Gunnison sage-grouse population dynamics: combining index and demographic data. *Ecology and Evolution* 4(22):4247–4257 DOI 10.1002/ece3.1290.
- Dennis B, Ponciano JM, Lele SR, Taper ML, Staples DF. 2006. Estimating density dependence, process noise, and observation error. *Ecological Monographs* 76(3):323–341 DOI 10.1890/0012-9615(2006)76[323:eddpna]2.0.co;2.
- Doherty KE, Evans JS, Coates PS, Juliusson LM, Fedy BC. 2016. Importance of regional variation in conservation planning: a rangewide example of the greater sage-grouse. *Ecosphere* 7(10):e01462 DOI 10.1002/ecs2.1462.
- Doherty KE, Naugle DE, Evans JS. 2010. A currency for offsetting energy development impacts: horse-trading sage-grouse on the open market. *PLOS ONE* 5(4):e10339 DOI 10.1371/journal.pone.0010339.
- Dzialak MR, Olson CV, Harju SM, Webb SL, Mudd JP, Winstead JB, Hayden-Wing LD. 2011. Identifying and prioritizing greater sage-grouse nesting and brood-rearing habitat for conservation in human-modified landscapes. *PLOS ONE* 6(10):e26273 DOI 10.1371/journal.pone.0026273.
- Fedy BC, Aldridge CL. 2011. The importance of within-year repeated counts and the influence of scale on long-term monitoring of sage-grouse. *Journal of Wildlife Management* 75(5):1022–1033 DOI 10.1002/jwmg.155.
- Fedy BC, Aldridge CL, Doherty KE, O'Donnell M, Beck JL, Bedrosian B, Holloran MJ, Johnson GD, Kaczor NW, Kirol CP, Mandich CA, Marshall D, McKee G, Olson C, Swanson CC, Walker BL. 2012. Interseasonal movements of greater sage-grouse, migratory behavior, and an assessment of the core regions concept in Wyoming. *Journal of Wildlife Management* 76(5):1062–1071 DOI 10.1002/jwmg.337.
- Fedy BC, Doherty KE. 2011. Population cycles are highly correlated over long time series and large spatial scales in two unrelated species: greater sage-grouse and cottontail rabbits. *Oecologia* 165(4):915–924 DOI 10.1007/s00442-010-1768-0.
- Fodrie FJ, Able KW, Galvez F, Heck KL, Jensen OP, López-Duarte PC, Martin CW, Turner RE, Whitehead A. 2014. Integrating organismal and population responses of estuarine fishes in Macondo spill research. *Bioscience* 64(9):778–788 DOI 10.1093/biosci/biu123.
- Fremgen AL, Hansen CP, Rumble MA, Gamo RS, Millsbaugh JJ. 2016. Male greater sage-grouse detectability on leks: sightability of male sage-grouse on leks. *Journal of Wildlife Management* 80(2):266–274 DOI 10.1002/jwmg.1001.
- Fukami T, Wardle DA. 2005. Long-term ecological dynamics: reciprocal insights from natural and anthropogenic gradients. *Proceedings of the Royal Society B: Biological Sciences* 272(1577):2105–2115 DOI 10.1098/rspb.2005.3277.

- Gamo RS, Beck JL. 2017.** Effectiveness of Wyoming's sage-grouse core areas: influences on energy development and male lek attendance. *Environmental Management* **59**(2):189–203 DOI [10.1007/s00267-016-0789-9](https://doi.org/10.1007/s00267-016-0789-9).
- Garton EO, Connelly JW, Horne JS, Hagen CA, Moser A, Schroeder MA. 2011.** Greater sage-grouse population dynamics and probability of persistence. In: Knick ST, Connelly JW, eds. *Greater Sage-Grouse: Ecology and Conservation of a Landscape Species and its Habitats, in Studies in Avian Biology*. Vol. 38. Berkeley: University of California Press, 293–374.
- Garton EO, Wells AG, Baumgardt JA, Connelly JW. 2015.** Greater sage-grouse population dynamics and probability of persistence. Technical report. Pew Charitable Trusts.
- Gelman A, Carlin JB, Stern HS, Dunson DB, Vehtari A, Rubin DB. 2014.** *Bayesian Data Analysis. Chapman & Hall/CRC Texts in Statistical Science*. Third Edition. Boca Raton: CRC Press.
- Gibson D, Blomberg EJ, Atamian MT, Sedinger JS. 2017.** Weather, habitat composition, and female behavior interact to modify offspring survival in greater sage-grouse. *Ecological Applications* **27**(1):168–181 DOI [10.1002/eap.1427](https://doi.org/10.1002/eap.1427).
- Gill JA, Norris K, Sutherland WJ. 2001.** Why behavioural responses may not reflect the population consequences of human disturbance. *Biological Conservation* **97**(2):265–268 DOI [10.1016/s0006-3207\(00\)00002-1](https://doi.org/10.1016/s0006-3207(00)00002-1).
- Green AW, Aldridge CL, O'Donnell MS. 2016.** Investigating impacts of oil and gas development on greater sage-grouse. *Journal of Wildlife Management* **81**(1):46–57 DOI [10.1002/jwmg.21179](https://doi.org/10.1002/jwmg.21179).
- Gregory AJ, Beck JL. 2014.** Spatial heterogeneity in response of male greater sage-grouse lek attendance to energy development. *PLOS ONE* **9**(6):e97132 DOI [10.1371/journal.pone.0097132](https://doi.org/10.1371/journal.pone.0097132).
- Greven S, Kneib T. 2010.** On the behaviour of marginal and conditional AIC in linear mixed models. *Biometrika* **97**(4):773–789 DOI [10.1093/biomet/asq042](https://doi.org/10.1093/biomet/asq042).
- Hallett TB, Coulson T, Pilkington JG, Clutton-Brock TH, Pemberton JM, Grenfell BT. 2004.** Why large-scale climate indices seem to predict ecological processes better than local weather. *Nature* **430**(6995):71–75 DOI [10.1038/nature02708](https://doi.org/10.1038/nature02708).
- Harju SM, Dzialak MR, Taylor RC, Hayden-Wing LD, Winstead JB. 2010.** Thresholds and time lags in effects of energy development on greater sage-grouse populations. *Journal of Wildlife Management* **74**(3):437–448 DOI [10.2193/2008-289](https://doi.org/10.2193/2008-289).
- Heyerdahl EK, Morgan P, Riser JP. 2008.** Multi-season climate synchronized historical fires in dry forests (1650–1900), northern Rockies, USA. *Ecology* **89**(3):705–716 DOI [10.1890/06-2047.1](https://doi.org/10.1890/06-2047.1).
- Hilborn R, Bue BG, Sharr S. 1999.** Estimating spawning escapements from periodic counts: a comparison of methods. *Canadian Journal of Fisheries and Aquatic Sciences* **56**(5):888–896 DOI [10.1139/cjfas-56-5-888](https://doi.org/10.1139/cjfas-56-5-888).
- Holloran MJ. 2005.** Greater sage-grouse (*Centrocercus urophasianus*) population response to natural gas field development in western Wyoming. Ph.D. Thesis. University of Wyoming, Laramie, WY.
- Holloran MJ, Anderson SH. 2005.** Spatial distribution of greater sage-grouse nests in relatively contiguous sagebrush habitats. *Condor* **107**(4):742 DOI [10.1650/7749.1](https://doi.org/10.1650/7749.1).
- Holloran MJ, Kaiser RC, Hubert WA. 2010.** Yearling greater sage-grouse response to energy development in Wyoming. *Journal of Wildlife Management* **74**(1):65–72 DOI [10.2193/2008-291](https://doi.org/10.2193/2008-291).
- Johnson D, Rowland M. 2007.** The utility of lek counts for monitoring greater sage-grouse. In: Reese K, Bowyer R, eds. *Monitoring Populations of Sage-Grouse*. Moscow: University of Idaho, 15–23.

- Kitchen SG. 2015.** Climate and human influences on historical fire regimes (AD 1400–1900) in the eastern Great Basin (USA). *Holocene* **26(3)**:397–407 DOI [10.1177/0959683615609751](https://doi.org/10.1177/0959683615609751).
- Knape J, De Valpine P. 2012.** Are patterns of density dependence in the Global Population Dynamics Database driven by uncertainty about population abundance? Density dependence in the GPDD. *Ecology Letters* **15(1)**:17–23 DOI [10.1111/j.1461-0248.2011.01702.x](https://doi.org/10.1111/j.1461-0248.2011.01702.x).
- Knick ST, Connelly JW. eds. 2011.** *Greater Sage-Grouse: Ecology and Conservation of a Landscape Species and its Habitats, in Studies in Avian Biology*. Vol. 38. Berkeley: University of California Press.
- Kristensen K, Nielsen A, Berg CW, Skaug H, Bell BM. 2016.** TMB: automatic differentiation and laplace approximation. *Journal of Statistical Software* **70(5)**:1–21 DOI [10.18637/jss.v070.i05](https://doi.org/10.18637/jss.v070.i05).
- Kvasnes MAJ, Storaas T, Pedersen HC, Bjørk S, Nilsen EB. 2010.** Spatial dynamics of Norwegian tetraonid populations. *Ecological Research* **25(2)**:367–374 DOI [10.1007/s11284-009-0665-7](https://doi.org/10.1007/s11284-009-0665-7).
- LaMontagne JM, Irvine RL, Crone EE. 2002.** Spatial patterns of population regulation in sage grouse (*Centrocercus* spp.) population viability analysis. *Journal of Animal Ecology* **71(4)**:672–682 DOI [10.1046/j.1365-2656.2002.00629.x](https://doi.org/10.1046/j.1365-2656.2002.00629.x).
- Lindström J, Ranta E, Lindén H, Lindstrom J, Linden H. 1996.** Large-scale synchrony in the dynamics of capercaillie, black grouse and hazel grouse populations in Finland. *Oikos* **76(2)**:221 DOI [10.2307/3546193](https://doi.org/10.2307/3546193).
- Ludwig GX, Alatalo RV, Helle P, Linden H, Lindstrom J, Siitari H. 2006.** Short-and long-term population dynamical consequences of asymmetric climate change in black grouse. *Proceedings of the Royal Society B: Biological Sciences* **273(1597)**:2009–2016 DOI [10.1098/rspb.2006.3538](https://doi.org/10.1098/rspb.2006.3538).
- Lukacs PM, Burnham KP, Anderson DR. 2010.** Model selection bias and Freedman’s paradox. *Annals of the Institute of Statistical Mathematics* **62(1)**:117–125 DOI [10.1007/s10463-009-0234-4](https://doi.org/10.1007/s10463-009-0234-4).
- Lyon AG, Anderson SH. 2003.** Potential gas development impacts on sage grouse nest initiation and movement. *Wildlife Society Bulletin* **31(2)**:486–491.
- Mantua NJ, Hare SR, Zhang Y, Wallace JM, Francis RC. 1997.** A Pacific interdecadal climate oscillation with impacts on salmon production. *Bulletin of the American Meteorological Society* **78(6)**:1069–1079 DOI [10.1175/1520-0477\(1997\)0782.0.co;2](https://doi.org/10.1175/1520-0477(1997)0782.0.co;2).
- Maunder MN, Deriso RB, Hanson CH. 2015.** Use of state-space population dynamics models in hypothesis testing: advantages over simple log-linear regressions for modeling survival, illustrated with application to longfin smelt (*Spirinchus thaleichthys*). *Fisheries Research* **164**:102–111 DOI [10.1016/j.fishres.2014.10.017](https://doi.org/10.1016/j.fishres.2014.10.017).
- McCabe GJ, Palecki MA, Betancourt JL. 2004.** Pacific and Atlantic Ocean influences on multidecadal drought frequency in the United States. *Proceedings of the National Academy of Sciences of the United States of America* **101(12)**:4136–4141 DOI [10.1073/pnas.0306738101](https://doi.org/10.1073/pnas.0306738101).
- McClure CJW, Rolek BW, McDonald K, Hill GE. 2012.** Climate change and the decline of a once common bird: climate change and blackbird decline. *Ecology and Evolution* **2(2)**:370–378 DOI [10.1002/ece3.95](https://doi.org/10.1002/ece3.95).
- Millar RB. 2011.** *Maximum Likelihood Estimation and Inference: With Examples in R, SAS, and ADMB. Statistics in practice*. West Sussex: Wiley, Chichester.
- Monroe AP, Edmunds DR, Aldridge CL. 2016.** Effects of lek count protocols on greater sage-grouse population trend estimates: lek count timing and trend estimates. *Journal of Wildlife Management* **80(4)**:667–678 DOI [10.1002/jwmg.1050](https://doi.org/10.1002/jwmg.1050).



- Moran PAP. 1952.** The statistical analysis of game-bird records. *Journal of Animal Ecology* **21(1)**:154 DOI [10.2307/1915](https://doi.org/10.2307/1915).
- Moran PAP. 1954.** The statistical analysis of game-bird records. II. *Journal of Animal Ecology* **23(1)**:35 DOI [10.2307/1659](https://doi.org/10.2307/1659).
- Nakagawa S, Schielzeth H. 2013.** A general and simple method for obtaining  $R^2$  from generalized linear mixed-effects models. *Methods in Ecology and Evolution* **4(2)**:133–142 DOI [10.1111/j.2041-210x.2012.00261.x](https://doi.org/10.1111/j.2041-210x.2012.00261.x).
- Neilson R, Lenihan J, Bachelet D, Drapek R. 2005.** Climate change implications for sagebrush ecosystems. In: *Transactions of the 70th North American Wildlife and Natural Resources Conference*, Washington, D.C.: Wildlife Management Institute, 145–149.
- Pianosi F, Beven K, Freer J, Hall JW, Rougier J, Stephenson DB, Wagener T. 2016.** Sensitivity analysis of environmental models: a systematic review with practical workflow. *Environmental Modelling & Software* **79**:214–232 DOI [10.1016/j.envsoft.2016.02.008](https://doi.org/10.1016/j.envsoft.2016.02.008).
- R Core Team. 2017.** *R: A Language and Environment for Statistical Computing*. Vienna: The R Foundation for Statistical Computing. Available at <http://www.R-project.org/>.
- Ramey R, Brown L, Blackgoat F. 2011.** Oil and gas development and greater sage grouse (*Centrocercus urophasianus*): a review of threats and mitigation measures. *Journal of Energy and Development* **35(1)**:49–78.
- Ranta E, Lindstrom J, Linden H. 1995.** Synchrony in tetraonid population dynamics. *Journal of Animal Ecology* **64(6)**:767–776 DOI [10.2307/5855](https://doi.org/10.2307/5855).
- Ross BE, Haukos D, Hagen C, Pitman J. 2016.** The relative contribution of climate to changes in lesser prairie-chicken abundance. *Ecosphere* **7(6)**:e01323 DOI [10.1002/ecs2.1323](https://doi.org/10.1002/ecs2.1323).
- Schoennagel T, Veblen TT, Kulakowski D, Holz A. 2007.** Multidecadal climate variability and climate interactions affect subalpine fire occurrence, western Colorado (USA). *Ecology* **88(11)**:2891–2902 DOI [10.1890/06-1860.1](https://doi.org/10.1890/06-1860.1).
- Selås V, Sonerud GA, Framstad E, Kålås JA, Kobro S, Pedersen HB, Spidso TK, Wiig O. 2011.** Climate change in Norway: warm summers limit grouse reproduction. *Population Ecology* **53(2)**:361–371 DOI [10.1007/s10144-010-0255-0](https://doi.org/10.1007/s10144-010-0255-0).
- Stan Development Team. 2016.** *RStan: The R interface to Stan*. R package version 2.16.2. Available at <http://mc-stan.org>.
- Stenseth NC, Mysterud A, Ottersen G, Hurrell JW, Chan K-S, Lima M. 2002.** Ecological effects of climate fluctuations. *Science* **297(5585)**:1292–1296 DOI [10.1126/science.1071281](https://doi.org/10.1126/science.1071281).
- Stenseth NC, Ottersen G, Hurrell JW, Mysterud A, Lima M, Chan K-S, Yoccoz NG, Adlandsvik B. 2003.** Studying climate effects on ecology through the use of climate indices: the North Atlantic Oscillation, El Nino Southern Oscillation and beyond. *Proceedings of the Royal Society B: Biological Sciences* **270(1529)**:2087–2096 DOI [10.1098/rspb.2003.2415](https://doi.org/10.1098/rspb.2003.2415).
- Taylor RL, Tack JD, Naugle DE, Mills LS. 2013.** Combined effects of energy development and disease on greater sage-grouse. *PLOS ONE* **8(8)**:e71256 DOI [10.1371/journal.pone.0071256](https://doi.org/10.1371/journal.pone.0071256).
- Trenberth KE, Hurrell JW. 1994.** Decadal atmosphere-ocean variations in the Pacific. *Climate Dynamics* **9(6)**:303–319 DOI [10.1007/s003820050027](https://doi.org/10.1007/s003820050027).
- Turek D. 2015.** Comparison of the frequentist MATA confidence interval with bayesian model-averaged confidence intervals. *Journal of Probability and Statistics* **2015**:420483 DOI [10.1155/2015/420483](https://doi.org/10.1155/2015/420483).
- Vaida F, Blanchard S. 2005.** Conditional Akaike information for mixed-effects models. *Biometrika* **92(2)**:351–370 DOI [10.1093/biomet/92.2.351](https://doi.org/10.1093/biomet/92.2.351).

- Viterbi R, Imperio S, Alpe D, Bosser-peverelli V, Provenzale A. 2015.** Climatic control and population dynamics of black grouse (*Tetrao tetrix*) in the Western Italian Alps: population dynamics of alpine black grouse. *Journal of Wildlife Management* **79(1)**:156–166  
[DOI 10.1002/jwmg.810](https://doi.org/10.1002/jwmg.810).
- Walker BL, Naugle DE, Doherty KE. 2007.** Greater sage-grouse population response to energy development and habitat loss. *Journal of Wildlife Management* **71(8)**:2644–2654  
[DOI 10.2193/2006-529](https://doi.org/10.2193/2006-529).
- Walsh DP, White GC, Remington TE, Bowden DC. 2004.** Evaluation of the lek-count index for greater sage-grouse. *Wildlife Society Bulletin* **32(1)**:56–68  
[DOI 10.2193/0091-7648\(2004\)32\[56:eotlif\]2.0.co;2](https://doi.org/10.2193/0091-7648(2004)32[56:eotlif]2.0.co;2).
- Wiens JA. 1989.** Spatial scaling in ecology. *Functional Ecology* **3(4)**:385–397  
[DOI 10.2307/2389612](https://doi.org/10.2307/2389612).