

Comparison of the Clinical Manifestations, Brain MRI and Prognosis between NeuroBehçet's Disease and Neuropsychiatric Lupus

Byung-Sik Cho, M.D., Hyun-Sook Kim, M.D., Su-Jin Oh, M.D.,
Hyeok-Jae Koh, M.D., Chong-Hyun Yoon, M.D., So-Lyung Jung, M.D.²,
Do-June Min, M.D. and Wan-Uk Kim, M.D.

Division of Rheumatology, Departments of Internal Medicine and Radiology², The Catholic University of Korea College of Medicine, Seoul, Korea

Background : Neuropsychiatric systemic lupus erythematosus (NPSLE) shows some similarities to neuroBehçet's disease (NBD) in that both conditions have some analogous clinical features and they are both pathologically associated cerebral vasculopathy. This study compared the clinical manifestations, brain MRI findings and prognosis of NPSLE and NBD patients.

Methods : Forty three patients with NPSLE (n = 25) or NBD (n = 18), who were monitored at a single center, were enrolled in this study. We retrospectively analyzed the clinical and brain MRI data. The neuropsychiatric manifestations were classified in both groups according to the new American College of Rheumatology nomenclature for NPSLE.

Results : The diffuse symptoms that included mood disorders, psychosis, confusion, cognitive dysfunctions, generalized seizures and headaches other than migraine or cluster headaches were more commonly observed in the NPSLE patients, while the frequency of focal diseases such as cranial neuropathy tended to be higher in the NBD patients. The brain MRI revealed that the NBD patients had more abnormalities in the brain stem than did the NPSLE patients. Most of the patients improved, at least partially, after being treated with glucocorticoid and/or immune suppressants. However, the disease course differed significantly between the two groups. There were more episodic cases in the NPSLE group of patients, while there were more remittent cases in the NBD group of patients.

Conclusion : NPSLE had a tendency to cause diffuse neuropsychiatric manifestations, and it has a different predilection of brain lesions compared with NBD. The NBD patients showed a poorer outcome than did the NPSLE patients, suggesting that different therapeutic strategies for the two diseases need to be considered.

Key Words : Behçet's disease, Systemic lupus erythematosus, Neurologic involvement, Magnetic resonance image

INTRODUCTION

Behçet's disease is a chronic inflammatory disease of an unknown origin, and it is characterized by the triad of oral ulcerations, genital ulcerations and uveitis. A number of additional features are commonly observed: these include

arthritis, retinal and cutaneous vasculitis, deep vein thrombosis, gastroenteric disorders and neuropsychiatric involvement¹. Among these features, neuropsychiatric involvement is one of the most serious complications. The reported frequency of neuroBehçet's disease (NBD) in Behçet's disease patients ranges from 2.2% to 49%; however, the previous reports that

•Received : November 3, 2006

•Accepted : February 12, 2007

•Correspondence to : Dr. Wan-Uk Kim, M.D., Division of Rheumatology, Department of Internal Medicine, School of Medicine, Catholic University of Korea, St. Vincent's Hospital, 93 Chi-Dong, Suwon 442-723, Korea Tel : 82-31-249-8168, Fax : 82-31-253-8898, E-mail : wan725@catholic.ac.kr

*Supported by a grant from MOST (KOSEF) through The Systems Bio-Dynamics Research Center

employed large subject populations have reported a rate of approximately 5%^{2, 3}. The spectrum of NBD varies and this can be classified into two major forms. One form is attributable to small venous inflammatory disease with focal or multifocal central nervous system (CNS) parenchymal involvement, and this form is seen in the majority of patients. The other form is caused by a cerebral venous sinus thrombosis with limited symptoms, and this form has a better neurological prognosis⁴. It is quite rare for the two types of involvement to occur simultaneously in the same individual^{2, 3}. In addition, psychiatric symptoms and peripheral nervous system (PNS) involvement is rarely encountered⁴.

Systemic lupus erythematosus (SLE) is an autoimmune inflammatory disease that might lead to multi-organ failure with various clinical courses and a variable prognosis, and SLE is tightly linked to the overproduction of a range of autoantibodies⁵. Neuropsychiatric SLE (NPSLE), as well as lupus nephritis, is a major cause of morbidity and mortality in SLE patients⁶. The prevalence of NPSLE ranges from 20% to 60% of SLE patients, which most likely depends on the different inclusion criteria used in the studies⁷. The spectrum of NPSLE also varies, and this includes neurologic syndromes of the central, peripheral and autonomic nervous system. Psychiatric syndromes are also commonly observed in the SLE patients for whom other causes have been excluded⁸.

In addition to the clinical diversity, the difficulty in defining the outcome measures and the lack of a standard terminology are considered obstacles for understanding the disease mechanisms and for evaluating the level of therapeutic intervention in both NBD and NPSLE patients. The American College of Rheumatology (ACR) has recently formulated specific criteria for NPSLE. The new nomenclature includes case definitions, reporting standards and the diagnostic testing recommendations for 19 different neuropsychiatric syndromes⁹. These definitions may provide a reliable classification for recruiting homogenous groups of patients for designing randomized controlled trials⁶.

NPSLE has some similarities to NBD in that both conditions have some common clinical features and they are pathologically associated with cerebral vasculopathy. Also, in Korea, SLE and Behçet's disease are the representative autoimmune diseases involving the nervous system. Therefore, this study compared the clinical characteristics, brain MRI findings and prognosis between NPSLE and NBD patients at a single center. We demonstrate here that NPSLE has a propensity to cause diffuse neuropsychiatric manifestations, and it shows different predilections for brain lesions compared with NBD. Moreover, the poorer outcome in NBD compared with NPSLE suggests the need for different treatments strategies for the two diseases.

MATERIALS AND METHODS

Patients

This study included 43 patients with NPSLE or NBD and these patients were monitored at Kangnam St. Mary's hospital between January 1999 and December 2002. The patients were identified from the hospital's automated information system. The patients' information was analyzed by retrospectively reviewing the data registered at regular intervals for at least 3 months. Of the patients who were screened, 25 NPSLE patients fulfilled the 1982 Revised Criteria for SLE as set forth by the American Rheumatism Association⁹, and 18 NBD patients met the 1990 criteria of the International Study Group for Behçet's disease¹⁰. Three of NPSLE patients had antiphospholipid syndrome that fulfilled both the laboratory and clinical Sapporo preliminary criteria¹¹. A written informed consent was obtained from each subject after giving a complete explanation of the study to the subjects. Three NPSLE patients and 3 NBD patients were referred to this center from local clinics as a result of their uncontrolled symptoms, and their medical records from those clinics were thoroughly reviewed.

Data collection and analysis

The clinical data was comprised of gender, the patient's age at the time of the neuropsychiatric event, the disease duration prior to the neuropsychiatric attack, the follow-up duration, the neuropsychiatric manifestations, the type and dosage of drugs and the clinical course. A team of rheumatologists, neurological and psychiatric consultants evaluated the level of neuropsychiatric involvement. Those patients with secondary neuropsychiatric events that were not directly related to SLE were excluded. The neuropsychiatric manifestations were classified according to the 1999 ACR Nomenclature and Case Definitions for neuropsychiatric lupus syndromes⁹, and all the enrolled patients met these criteria. Using this classification, the presentations were subdivided into one of the following groups; diffuse disease (including psychosis, mood disorder, cognitive dysfunction, acute confusional states, headaches other than migraine or cluster headache, and generalized seizures), focal disease (migraine or cluster headache, focal seizures and other neuropsychiatric manifestations) and complex presentations (cases where both diffuse and focal neuropsychiatric manifestations occurred simultaneously). For making comparison with NPSLE, the neuropsychiatric manifestations of NBD were also classified with using the same nomenclature used for NPSLE. All the NBD patients met these criteria. In particular, regarding headache, the patients who responded to conventional medication and had other explainable causes were excluded due to some discrepancy in the relationship between headache and NPSLE or NBD.

Table 1. Demographic data for the neuropsychiatric SLE (NPSLE) and neuroBehçet's disease (NBD) patients

* Demographics	NPSLE (n=25)	NBD (n=18)	<i>p</i>
Gender (male/female), number	3/22	11/7	0,001
Age at neuropsychiatric event, years	31±10	38±9	0,024
Disease duration prior to neuropsychiatric attack, months	50±55	36±26	0,644
Follow-up duration, months	42±36	36±15	0,166

*The data is presented as means±standard deviations (SD) except for gender.

As the part of the initial evaluation, all the patients underwent routine laboratory tests, chest radiographs and electrocardiograms. The sera of the NPSLE patients were tested for antinuclear antibodies, the C₃ and C₄ complement components, antibodies to extractable nuclear antigens, antibodies to double-stranded DNA as assessed by radioimmunoassay, and anticardiolipin antibodies (ACA) and anti- β 2-glycoprotein I antibodies (anti β 2-GPI antibodies) as assessed by ELISA. Positive levels of ACA and anti β 2-GPI antibodies were defined as being levels > 5 standard deviations above the mean levels of 100 healthy controls. Where indicated, some of the patients underwent cerebrospinal fluid analysis, electroencephalograms and echocardiograms.

Each patient was treated differently, according to their disease severity and possible causes. Treatment was classified as 1) conservative therapy, which was composed of neurological or psychiatric regimens, and 2) immune suppressive therapy with high dose oral prednisolone (1-2 mg/kg/day) and/or other immunosuppressive agents that included cyclophosphamide, azathioprine, chlorambucil, methotrexate, cyclosporine, interferon- α (IFN- α) and anti-tumor necrosis factor- α (anti-TNF- α). The treatment response and clinical course, that is, episodic (a single episode of neuropsychiatric manifestations), remittent (recurrent episodes of remission and relapse of neuropsychiatric manifestations), and sustained or progressive (persistent neuropsychiatric manifestations without remission), were also analyzed in each patient. The treatment response was classified into a good, partial and poor response. A good response was defined as the complete improvement of neuropsychiatric symptoms without any sequela. A partial response was defined as the initial improvement with later exacerbation and/or incomplete improvement with sequela. A poor response was defined as no improvement and/or exacerbations.

Brain magnetic resonance imaging (MRI)

All the patients underwent brain MRI to determine the causes of their neuropsychiatric symptoms, and the MRI included T1-weighted images, T2-weighted images and fluid-attenuated inversion-recovery (FLAIR) images. The MRI was performed using a 1,5 T MRI system (GE SIGNA Advantage version 4.8). The conventional spin echo pulse sequence with a TE of 20 ms and

a TR of 400 ms was used to obtain the T1-weighted MR images. The fast spin echo pulse sequence with a TE of 90 ms and a TR of 2,500 ms was used to obtain the T2-weighted MR images. Contrast medium was administered to all patients, and this was followed by obtaining the axial/sagittal/coronal T1-weighted images. Two neuroradiologists, who were unaware of the clinical data, evaluated the MRI. For analysis, the abnormal MRI findings were carefully classified into the following categories: an abnormal T2 weighted image, infarct-like lesions (moderate-size to large, roughly wedge-shaped areas of abnormal high signal on the T2-weighted images and/or encephalomalacia involving the gray and white matter), parenchymal hemorrhage, loss of brain volume, abnormal intracranial enhancement and meningeal enhancement. The location of the brain lesions was also analyzed. The lesions were classified as stable, resolving or progressing if the patients underwent MRI more than once.

Statistical analysis

Comparisons of the numerical data between the groups were performed using the Mann-Whitney rank sum test, and the categorical data was analyzed using chi-square tests or Fisher's exact probability tests. *p* values < 0,05 were considered to be significant.

RESULTS

Demographic and extra-neuropsychiatric features

The demographic characteristics of the 43 patients (25 NPSLE patients and 18 NPBS patients) are summarized in Table 1. The NPSLE patients showed a female predominance (*p*=0,001). The age at the time of the neuropsychiatric event was higher for the NBD patients (38±9 years) than for the NPSLE patients (31±10 years) (*p*=0,024). The disease duration prior to the neuropsychiatric attack and the length of the follow-up period was similar for the two groups. For the NPSLE, 3 patients (12,0%) had antiphospholipid syndrome, 7 patients (28,0%) had lupus nephritis, 2 patients (8,0%) had mesenteric vasculitis and 5 patients (20,0%) had hematological abnormalities that affected the treatment strategies. For the NBD, all the patients had

Table 2. Comparison of the neuropsychiatric manifestations between the neuropsychiatric SLE (NPSLE) and neuroBehçet's disease (NBD) patients according to the ACR case definitions for NPSLE

* Neuropsychiatric manifestations	NPSLE	NBD	<i>p</i>
Mood disorder	8 (32.0)	3 (16.7)	0,309
Major depression	3	1	
Depressive features	3	2	
Manic features	2	0	
Mixed features	0	0	
Psychosis	1 (4.0)	0 (0)	1,000
Acute confusional states	2 (8.0)	0 (0)	0,502
Cognitive dysfunction	3 (12.0)	8 (44.4)	0,031
Seizure	8 (32.0)	3 (16.7)	0,309
Generalized	5	2	
Partial	3	1	
Headache	3 (12.0)	7 (38.9)	0,067
Migraine	0	4	
Tension	2	3	
Cluster	0	0	
Pseudotumor cerebri	0	0	
Nonspecific	1	0	
Cerebrovascular disease	5 (20.0)	2 (11.1)	0,680
Stroke	3	2	
Transient ischemic attack	0	0	
Multifocal disease	1	0	
Intracranial hemorrhage	1	0	
Sinus thrombosis	0	0	
Neuropathy, cranial	1 (4.0)	6 (33.3)	0,015
Aseptic meningitis	2 (8.0)	1 (5.6)	1,000
Myelopathy	2 (8.0)	1 (5.6)	1,000
Demyelinating syndrome	1 (4.0)	0 (0)	1,000
Mononeuropathy	1 (4.0)	0 (0)	1,000
Polyneuropathy	1 (4.0)	0 (0)	1,000
Movement disorder	1 (4.0)	1 (5.6)	1,000

* The data is presented as the number (%) of events.

recurrent oral ulcerations, 7 patients (38.9%) had genital ulcerations, 8 patients (44.4%) had eye lesions, 15 patients (83.3%) had skin lesions such as erythema nodosum and folliculitis, 1 patient had gastrointestinal involvement, 8 patients (44.4%) had arthritis and 1 patient had major arterial involvement.

Neuropsychiatric manifestations

Table 2 shows the neuropsychiatric manifestations in the two groups. As initial manifestations, the neuropsychiatric complications were the major symptoms and signs in 5 SLE patients and 3 Behçet's disease patients. Four NPSLE patients and 4 NBD patients had a history of previous neuropsychiatric complications. These include mononeuritis multiplex, seizure and transverse myelitis for the NPSLE patients, and aseptic meningitis, cerebrovascular disease (CVD) and cognitive dysfunction for the NBD patients. Sixteen (64.0%) NPSLE patients showed evidence of concomitant extra-neuropsychiatric complications (e.g. lupus nephritis and mesenteric vasculitis) and/or elevated SLE activity,

which was determined by the levels of C₃, C₄ and the anti-double-stranded DNA antibody.

The common features in the NPSLE patients were mood disorders (32.0%), seizure (32.0%), and CVD (20.0%). In contrast, the common features in the NBD patients were cognitive dysfunction (44.4%), headache (38.9%), and cranial neuropathy (33.3%). Cognitive dysfunction and cranial neuropathy were more common in the NBD patients. All the patients with cognitive dysfunction in both groups were associated with a variety of neurologic or psychiatric diseases, including neuropathy, headache, CVD, movement disorder and mood disorders. Half of the cranial neuropathy of the NBD patients (3 of 6) was associated with cognitive dysfunction. The types of cranial neuropathy of the NBD patients were vestibule-cochlear dysfunction (4 of 6 patients) and oculomotor dysfunction (2 of 6 patients). One NPSLE patient had optic nerve dysfunction.

Importantly, Table 3 showed the subgroup analysis, and this revealed that diffuse manifestations were more common in the

Table 3. Subgroup analysis of the neuropsychiatric manifestations

* Neuropsychiatric manifestations	NPSLE (n=25)	NBD (n=18)	<i>p</i>
Diffuse disease	14 (56,0)	3 (16,7)	0,013
Focal disease	8 (32,0)	9 (50,0)	0,234
Complex disease	3 (12,0)	6 (33,3)	0,133

* The data is presented as the number (%) of events.

Table 4. Comparison of the brain MRI findings in the neuropsychiatric SLE (NPSLE) patients and the neuroBehçet' s disease (NBD) patients

*Brain MRI findings	NPSLE (n=25)	NBD (n=18)	<i>p</i>
MRI abnormalities			
Abnormal T2 weighted image	15 (60)	15 (83,3)	0,178
Infarct like lesions	4 (16)	3 (16,7)	1,000
Parenchymal hemorrhage	2 (8)	0 (0)	0,502
Volume loss	4 (16)	3 (16,7)	1,000
Abnormal intracranial enhancement	5 (20)	3 (16,7)	1,000
Meningeal enhancement	3 (12)	0 (0)	0,252
Negative	8 (32)	3 (16,7)	0,309
Location of lesions			
Cerebral white matter	11 (48)	4 (22,2)	0,115
Subcortex	8 (32)	3 (16,7)	0,309
Deep white mater	5 (20)	1 (5,6)	0,375
Periventricular	2 (8)	0 (0)	0,502
Basal ganglia	6 (24)	6 (33,3)	0,516
Internal capsule	1 (4)	1 (5,6)	1,000
Thalamus	2 (8)	2 (11,1)	1,000
Brain stem	5 (20)	10 (55,6)	0,024
Pons	3 (12)	6 (33,3)	0,133
Mid brain	3 (12)	7 (38,9)	0,067
Medulla	1 (4)	0 (0)	1,000
Cerebellum	3 (12)	2 (11,1)	1,000
Meninges	3 (12)	0 (0)	0,252
Spinal cord	1 (4)	1 (5,6)	1,000

* The data is presented as the number (%).

NPSLE patients (56,0 versus 16,7%, respectively, $p=0,013$). The frequency of focal manifestations and complex manifestations was similar for both groups.

All the NPSLE patients underwent tests for the ACA and/or anti 2-GPI antibodies. A minimum of 2 positive tests (either ACA and/or anti 2-GPI antibodies) were required before the patient was confirmed to be positive for anti-phospholipid antibody. The result showed that 13 NPSLE patients (52,0%) had increased levels of the anti-phospholipid antibody with a high titer (> 5 SD over the mean levels of the healthy controls); 7 patients were positive for ACA and 13 patients tested positive for anti 2-GPI antibodies, respectively. Three of 8 patients with seizure disorder had increased levels of ACA and anti 2-GPI antibodies. In addition, 2 of 5 patients with CVD and all 3 patients with cognitive dysfunction tested positive for anti-phospholipid antibody. The other neuropsychiatric features that were associated with a positive test for anti-phospholipid antibody

included mood disorders, acute confusional states, psychosis, transverse myelitis, cranial neuropathy and movement disorders.

MRI findings

As shown in Table 4, the NBD and NPSLE patients had different predilections of brain lesions. For example, the brain stem lesions on MRI were more frequently encountered in the NBD patients (55,6 versus 20,2%, respectively, $p=0,024$), whereas the frequency of the cerebral white matter abnormalities tended to be higher in the NPSLE patients than in the NBD patients (44,0 versus 22,2%, respectively) (Table 4, Figure 1). Abnormalities in the cerebral white matter of the NPSLE patients were mainly located in the frontal and parietal lobes.

It's interesting that 8 (32,0%) of the 25 NPSLE patients and 3 (16,7%) of the 18 NBD patients had a normal brain MRI, despite having definite neuropsychiatric symptoms and signs. Of these, 5 (62,5%) of the 8 NPSLE patients had diffuse

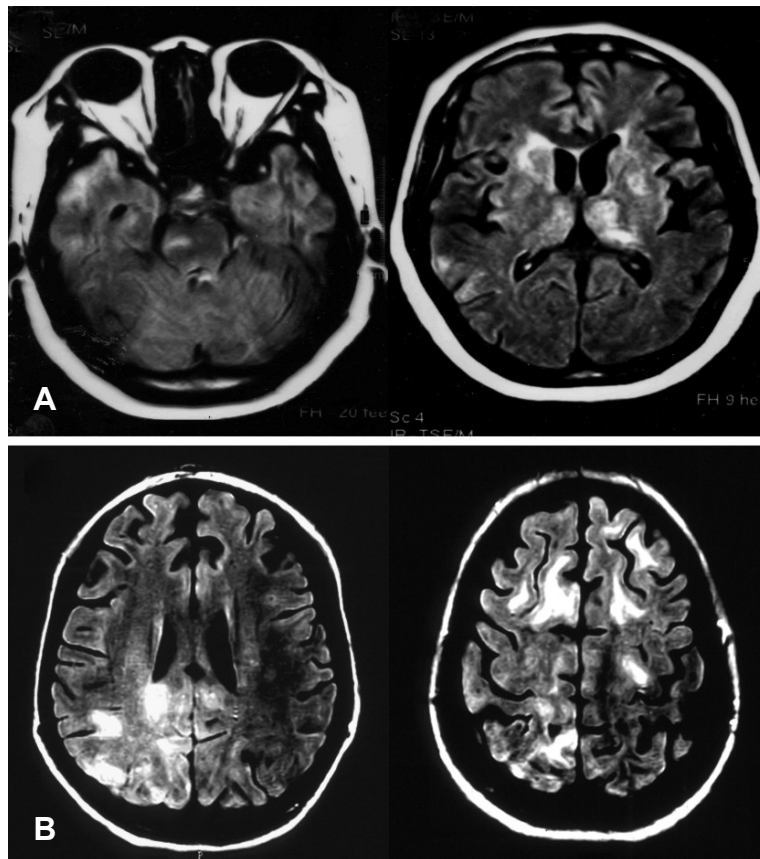


Figure 1. Representative MRI findings in a neuroBehçet's disease (NBD) patient and a neuropsychiatric SLE (NPSLE) patient. (A) Fluid-attenuated inversion-recovery (FLAIR) images of a 43-year-old male NBD patient with cranial neuropathy. There are abnormal signals in the brain stem and the left frontal white matter. (B) FLAIR images of a 15-year-old female NPSLE patient with generalized seizure. There are abnormal signals in the subcortical and periventricular white matter.

neuropsychiatric manifestations as their major symptom, whereas all 3 NBD patients presented with focal manifestations such as seizure and movement disorders. Parenchymal volume loss was observed in 4 NPSLE and 3 NBD patients. An abnormal high signal was typically high on the FLAIR and other T2-weighted images, and this was observed in 15 (60.0%) NPSLE patients and 15 (83.3%) NBD patients. However, this was frequently nonspecific, and this was interpreted as being consistent with focal ischemia, demyelination or vasculitis. Infarct-like lesions were observed in 4 NPSLE patients and 3 NBD patients. Parenchymal hemorrhage was observed in only 2 NPSLE patients. Five NPSLE patients and 3 NBD patients showed abnormal intracranial enhancement, mainly with focal and heterogenous distributions. Other minor abnormalities included meningeal contrast enhancement in the NPSLE patients, and internal carotid artery narrowing, venous angioma, lipoma and mega cisterna magna in the NBD patients.

The follow-up MRI, taken at an interval of from 1 month to 2 years, was available for 7 NPSLE patients and 3 NBD patients. For the NPSLE patients, two showed complete regression, two showed partial regression, two showed progression and one showed no change. For the NBD patients, two showed regression and one did not show any change on the follow-up MRI.

Therapy and clinical course

Table 5 and Figure 2 show the therapy, treatment response and clinical course of the patients. The maintenance therapy of all the patients included prednisolone at the time of the attack for treating a variety of causes. The percentage of patients receiving conservative or immune suppressive therapy was not significantly different between the NPSLE patients and NBD patients (e.g. conservative treatment: 32.0% for the NPSLE patients and 22.2% for the NBD patients). After the

Table 5. Comparison of the immune suppressants newly added and maintained after neuropsychiatric attack in the neuropsychiatric SLE (NPSLE) and neuroBehçet's disease (NBD) patients

*Characteristics	NPSLE (n=25)	NBD (n=18)	<i>p</i>
Treated with			
**Cyclophosphamide	6 (24)	1 (5,6)	0,209
Azathioprine	1 (4)	5 (27,8)	0,067
Methotrexate	1 (4)	0 (0)	1,000
Cyclosporine	0 (0)	4 (22,2)	0,025
Chlorambucil	0 (0)	2 (11,1)	0,169
Interferon- α	0 (0)	1 (5,6)	0,419
Anti-tumor necrosis factor- α	0 (0)	1 (5,6)	0,419
Number of second-line drugs			
≥ 4	0 (0)	1 (5,6)	0,419
≥ 3	1 (4)	2 (11,1)	0,562
≥ 2	5 (24)	4 (22,2)	1,000
≥ 1	17 (68)	14 (77,8)	0,481

* The data is presented as the number (%).

** Intravenous, 0,75-1,0 g/m² body surface area, monthly.

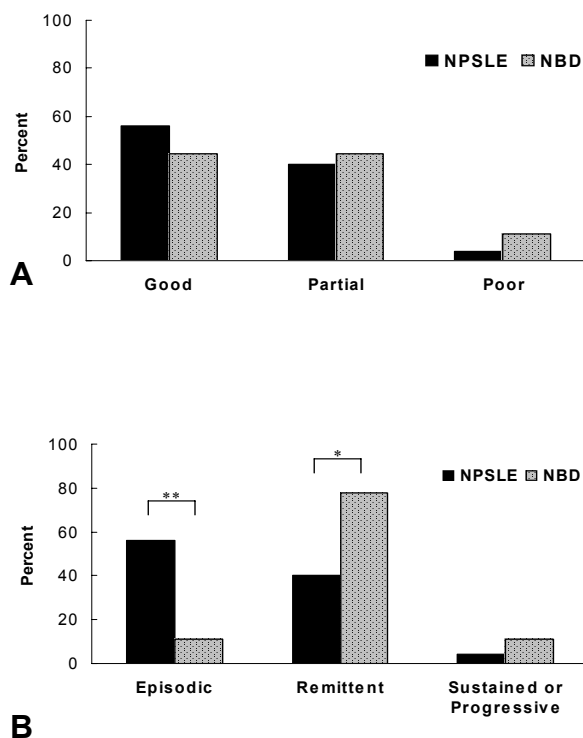


Figure 2. Comparison of the initial treatment response (A) and disease course (B) after conservative or immune suppressive treatment for neuropsychiatric SLE (NPSLE) and neuroBehçet's disease (NBD) patients. The data is presented as a percentage. *, $p < 0,05$; **, $p < 0,01$.

neuropsychiatric attack, 16 NPSLE patients (64%) and 7 NBD patients (38,9%) were given high dose oral prednisolone therapy (1-2 mg/kg/day) ($p=0,766$). Among them, 8 NPSLE patients (32%) and 5 NBD patients (27,8%) were given intravenous methylprednisolone pulse therapy (500 mg-1g daily for three days) ($p=0,153$). The number and type of immune suppressants (e.g. cyclophosphamide, azathioprine) that were newly added and then maintained after the neuropsychiatric attack was similar in the two groups with cyclosporine being the only exception (Table 5). Three NPSLE patients with anti-phospholipid syndrome were also treated with an anticoagulant. Three NPSLE patients with intractable thrombocytopenia or thrombotic thrombocytopenic purpura were treated with high dose prednisolone plus intravenous immunoglobulin and/or plasmapheresis. Two NBD patients (one with CVD and one with cranial neuropathy along with cognitive dysfunction) had progressive disease despite being treated with high dose prednisolone plus immune suppressants. Therefore, biological agents such as IFN- and anti-TNF- monoclonal antibody were added to the above-mentioned immune suppressants for treating these 2 patients.

For most patients, the neuropsychiatric manifestations improved after being treated with conservative or immune suppressive treatments (88,0% for the NPSLE patients and 88,9% for the NBD patients) (Figure 2A). However, the disease course was significantly different between the two groups after the initial improvement. Episodic cases were more common in the NPSLE patients (65,0 versus 22,2%, respectively, $p=0,012$), while remittent cases were more frequently noted in the NBD patients (72,2 versus 24,0%, respectively, $p=0,02$) (Figure 2B). Two NBD patients showed a good or partial response with the additional IFN- or anti-TNF- monoclonal antibody treatment. However, the biological agents failed to prevent further attacks

or progression of disease. The number of patients who showed a sustained or progressive course that was refractory to therapy was similar in the two groups.

DISCUSSION

Systemic immune-mediated diseases can often affect the nervous system^{12, 13}, and among them, SLE and Behçet's disease are the common autoimmune diseases of the nervous system in Korea. NPSLE is believed to have a particular propensity to cause diffuse manifestations or psychiatric disorders¹⁴. In contrast, NBD is commonly associated with CNS parenchyma and central venous sinus thrombosis, and it rarely presents as psychiatric disorders⁴. However, no trial has been carried out to compare the two diseases, even though both conditions have been associated with immune-mediated mechanisms and they have pathologically revealed small vessel vasculopathy in the parenchyma of the nervous system. The classic histopathological studies of the nervous system in SLE patients have shown vascular changes and the resultant microinfarcts, although any true vasculitis was rare¹⁴. As for NBD, vasculitis is believed to be the underlying pathological process of Behçet's disease and the pattern of the parenchymal lesions seen on cranial MRI was consistent with small vessel vasculitis and inflammation of veins. However, there are contradictory reports on the observed pathology and the observed histopathologic changes cover a wide spectrum, including vasculitis, low grade inflammation, demyelination and degenerative changes. Definite vasculitis has not been observed in all cases¹³. Our current study was performed in a single hospital, and it showed that the NPSLE patients had a female predominance, and they were generally younger than the NBD patients. In addition, the NPSLE patients had a greater propensity for diffuse manifestations than the NBD patients, even though the possibility of a referral bias cannot be completely ruled out. There is a serious doubt regarding the previously suggested relationship between headache and SLE⁷, whereas headache is considered the most common neurological symptom observed in Behçet's disease patients⁴. In contrast, the frequency of focal diseases such as cranial neuropathy or headache tended to be higher in the NBD patients. These findings show a different pattern of neuropsychiatric presentations between the NPSLE and NBD patients, and they suggest that NPSLE might be caused by a different immunologic process from NBD.

The main problem is how to plausibly explain this discrepancy. The spectrum of the syndromes seen in NPSLE and NBD patients probably reflects multiple pathological processes, but ischemia is widely accepted to play a major role

in causing CNS disorders in SLE patients, and reperfusion of an ischemic area carries the risk of edema and hemorrhage^{15, 16}. The wide range of antibodies is a distinctive immunological feature of SLE, which is in contrast to Behçet's disease. These autoantibodies are believed to play two different, but not mutually exclusive roles in mediating neurological injury; direct injury to the neural target cells and antibody-induced rheological disturbances leading to an infarction¹⁴. Of the two mechanisms, antibody-mediated diffuse neural damage might be a possible mechanism for the propensity of NPSLE patients to exhibit diffuse manifestations, while antibody-induced rheological disturbances are widely accepted to be the major event for causing CVD. In this study, the high prevalence (52%) of anti-phospholipid antibodies with a high titer in the NPSLE patients supports this hypothesis.

MRI is a useful tool for detecting CNS lesions in patients suffering with SLE and Behçet's disease^{17, 18}. Up to 70% of NPSLE patients have multiple white matter lesions seen on brain MRI¹⁸. The lesions appear on the T2 images as high signal areas in the periventricular and subcortical white matter, and they usually appear as normal in the T1-weighted images¹⁷. Neuro-imaging studies on NBD patients have shown that these lesions are generally located within the brain stem, occasionally with an extension to the diencephalons, or less commonly within the periventricular and subcortical white matter^{4, 18}. These lesions are generally observed as high signal intensity on the T2-weighted images¹⁸. This current study also showed different predilections of MRI involvement in the NPSLE patients versus the NBD patients, which is consistent with earlier reports^{4, 17-19}. The lesion predilection for the brain stem together with the sparseness of cortical lesions might explain the rarity or lack of higher cortical function disturbances in the NBD patients. The reason for the lesion predilection in the brain stem, basal ganglia and diencephalons is not known. It has been hypothesized that inflammation of the small-to-medium sized veins of those regions might be responsible for causing venous infarcts²⁰. Although this appears to be reasonable, more pathological studies are needed to support this hypothesis.

In this study, 8 (32%) of the 25 NPSLE patients and 3 (16.7%) of the 18 NBD patients had a normal MRI, despite having definite neuropsychiatric complications. Of note, 5 of the 8 NPSLE patients with a normal MRI had diffuse manifestations. A neuronolytic effect of the antibodies in SLE patients would be difficult to reconcile with the transient nature of many of the neurological features, as well as with the absence of clear pathological changes of the selective neuronal cell loss. One possibility would be the presence of non-lethal autoantibodies in the SLE patients, which could elicit a transient alteration of the cell function without causing cell death or inflammation. This non-lethal injury might present as an absence of specific MRI

abnormalities in many SLE patients who have diffuse presentations. In parallel with this hypothesis, a more sensitive imaging tool such as ^1H magnetic resonance spectroscopy is currently being introduced to detect the neurometabolite changes that precede permanent neuronal loss²¹.

The treatment for NPSLE and NBD should be adjusted according to the requirements of the individual patient because the neurological involvement in SLE and Behçet's disease is not uniform^{4, 22}. Symptomatic, immunosuppressive and anticoagulant therapies are the main strategies for managing NPSLE and NBD. In this study, the neuropsychiatric manifestations were at least partially improved in almost all patients of both groups. However, the prognosis was significantly different between the patients of the two groups. The NBD patients, who showed a good response initially, they tended to be remittent, while the NPSLE patients tended to be episodic. This discrepancy suggests that NBD should be treated more aggressively in order to prevent its recurrence or progression. Unfortunately, there is little evidence on the efficacy of various treatment modalities for any form of neurological treatment in Behçet's disease⁴. Biological agents, including the IFN-antibody and anti-TNF- α antibody, have recently been anecdotally reported to be of benefit for treating some of the systemic manifestations of Behçet's disease. However, none of these agents have been shown to be effective in a properly designed study⁴. In this study, the IFN- α or anti-TNF- α antibody failed to prevent further neurological attacks or progression in the two NBD patients.

This report is the first to describe the clinical findings, brain MRI and prognosis of NPSLE patients and NBD patients in a single hospital. The differences in neuropsychiatric presentations, the location of the brain lesions on MRI and the clinical course between the NPSLE patients and NBD patients suggest that there might be a different pathological process involved in each disease, and these 2 diseases should be treated differently in order to prevent recurrent attacks or progression of disease. However, this study was limited by its retrospective nature and the small number of subjects. Prospective multi-center trials are needed to provide more clues for understanding the diseases' pathogenetic mechanisms, to guide further research on their cause and to find more effective treatments for these serious and potentially life-threatening diseases.

REFERENCES

- Nadeau SE. *Neurologic manifestations of connective tissue disease*. *Neurol Clin* 20:151-178, 2002
- Akman-Demir G, Serdaroglu P, Tasci B. *Clinical patterns of neurological involvement in Behçet's disease syndrome: evaluation of 200 patients*. *Brain* 122:2171-2182, 1999
- Siva A, Kantarci OH, Saip S, Altintas A, Hamuryudan V, Islak C, Kocer N, Yazici H. *Behçet's disease: diagnostic and prognostic aspects of neurological involvement*. *J Neurol* 248:95-103, 2001
- Siva A, Altintas A, Saip S. *Behçet's syndrome and the nervous system*. *Curr Opin Neurol* 17:347-357, 2004
- Salmon JE, Kimberly RP, Agarti VD. *Systemic lupus erythematosus: immunopathology*. In: Hochberg MC, Silman A, Smolen JS, Weinblatt ME, Weisman MH, eds. *Rheumatology*, vol. 2, 3rd ed, p. 1297-1315, London, Mosby, 2003
- Sanna G, Bertolaccini ML, Mathieu A. *Central nervous system lupus: a clinical approach to therapy*. *Lupus* 12:935-942, 2003
- Jennekens FG, Kater L. *The central nervous system in systemic lupus erythematosus: part 1, clinical syndromes: a literature investigation*. *Rheumatology* 41:605-618, 2002
- The American College of Rheumatology. *The American College of Rheumatology nomenclature and case definitions for neuropsychiatric lupus syndromes*. *Arthritis Rheum* 42:599-608, 1999
- Tan EM, Cohen AS, Fries JF, Masi AT, McShane DJ, Rothfield NF, Schaller JG, Talal N, Winchester RJ. *The 1982 revised criteria for the classification of systemic lupus erythematosus*. *Arthritis Rheum* 25:1271-1277, 1982
- International Study Group for Behçet's Disease. *Criteria for diagnosis of Behçet's disease*. *Lancet* 335:1078-1080, 1990
- Wilson WA, Gharavi AE, Koike T, Lockshin MD, Branch DW, Piette JC, Brey R, Derksen R, Harris EN, Hughes GR, Triplett DA, Khamashta MA. *International consensus statement on preliminary classification criteria for definite antiphospholipid syndrome: report of an international workshop*. *Arthritis Rheum* 42:1309-1311, 1999
- Fieschi C, Rasura M, Anzini A, Beccia M. *Central nervous system vasculitis*. *J Neurol Sci* 153:159-171, 1998
- Siva A. *Vasculitis of the nervous system*. *J Neurol* 248:451-468, 2001
- Scolding NJ, Joseph FG. *The neuropathology and pathogenesis of systemic lupus erythematosus*. *Neuropathol Appl Neurobiol* 28:173-189, 2002
- Jennekens FG, Kater L. *The central nervous system in systemic lupus erythematosus: part 2, pathogenetic mechanisms of clinical syndromes: a literature investigation*. *Rheumatology* 41:619-630, 2002
- Meroni PL, Tincani A, Sepp N, Raschi E, Testoni C, Corsini E, Cavazzana I, Pellegrini S, Salmaggi A. *Endothelium and the brain in CNS lupus*. *Lupus* 12:919-928, 2003
- Graham JW, Jan W. *MRI and the brain in systemic lupus erythematosus*. *Lupus* 12:891-896, 2003
- Akman-Demir G, Bahar S, Coban O, Tasci B, Serdaroglu P. *Cranial MRI in Behçet's disease: 134 examinations of 98 patients*. *Neuroradiology* 45:851-859, 2003
- Rovaris M, Viti B, Ciboddo G, Gerevini S, Capra R, Jaunucci G, Comi G, Filippi M. *Brain involvement in systemic immune mediated disease: magnetic resonance and magnetization transfer imaging study*. *J Neurol Psychiatry* 68:170-177, 2000
- Kocer N, Islak C, Siva A, Saip S, Akman C, Kantarci O, Hamuryudan V. *CNS involvement in neuro-Behçet's syndrome: an MR study*. *AJNR Am J Neuroradiol* 20:1015-1024, 1999
- Bosma GP, Steens SC, Petropoulos H, Admiraal-Behloul F, van den Haak A, Doornbos J, Huizinga TW, Brooks WM, Harville A, Sibbitt

WL Jr, van Buchem MA, *Multisequence magnetic resonance imaging study of neuropsychiatric systemic lupus erythematosus, Arthritis Rheum* 50:3195-3202, 2004

22) West SG, *Lupus and the central nervous system, Curr Opin Rheumatol* 8:408-414, 1996