

# Lessons in Care: Insights Into Recent Changes in the American Diabetes Association's Clinical Practice Recommendations

Erika Gebel Berg

In January, the American Diabetes Association (ADA) published the *Standards of Medical Care in Diabetes—2017* (1), its comprehensive evidence-based clinical practice recommendations for the care of people with or at risk for diabetes. The Standards are updated annually by the ADA's Professional Practice Committee (available at [http://care.diabetesjournals.org/content/40/Supplement\\_1](http://care.diabetesjournals.org/content/40/Supplement_1)) based on the latest clinical research and are funded from the ADA's general fund without industry support. In addition, the ADA publishes occasional position statements on a range of diabetes-related topics, most recently neuropathy (2), hypoglycemia (3), and physical activity (4). Following are some highlights from the ADA's 2017 Standards and from recent position statements, tailor-made for busy point-of-care providers.

## 2017 Standards Highlights

### Tap Into Community Resources

The latest Standards include new recommendations aimed at reducing health disparities stemming from discrimination, racism, socioeconomic status, lack of health care access, and language barriers, among other factors, by encouraging providers to refer patients to community resources. Furthermore, ADA makes the assertion, based on high-quality evidence for benefit, that patients should be provided self-management support from lay health coaches, navigators, or community health workers.

### More Candidates for Metabolic Surgery

Obesity management is a treatment for type 2 diabetes, and the specific approach—lifestyle, pharmacologic, or metabolic surgery—should be individualized according to a patient's characteristics and preferences. A big change for 2017 was the expansion of the pool of patients for which metabolic surgery is an appropriate treatment. Based on the findings of an international workgroup report, ADA now suggests metabolic surgery for:

- Appropriate surgical candidates with type 2 diabetes and a BMI  $\geq 40$  kg/m<sup>2</sup>, or  $\geq 37.5$  kg/m<sup>2</sup> in Asian Americans, *regardless of glycemic control.*
- Appropriate surgical candidates with type 2 diabetes, suboptimal glycemic control, and a BMI as low as 30.0 kg/m<sup>2</sup>, or 27.5 kg/m<sup>2</sup> in Asian Americans.

### Better Glucose-Lowering Agents for Patients With Cardiovascular Disease

Strong new evidence emerged in 2016 that, for patients with type 2 diabetes and overt cardiovascular disease, empagliflozin or liraglutide lowers the risk of death. Therefore, the 2017 Standards includes a new recommendation that these medications be considered in that specific patient population. More research is needed to see whether other agents in the same classes (sodium–glucose cotransporter 2 inhibitors and glucagon-like peptide 1 [GLP-1] receptor agonists)

American Diabetes Association,  
Arlington, VA

Corresponding author: Erika Gebel Berg,  
EBerg@diabetes.org

DOI: <https://doi.org/10.2337/cd17-0012>

©2017 by the American Diabetes Association. Readers may use this article as long as the work is properly cited, the use is educational and not for profit, and the work is not altered. See <http://creativecommons.org/licenses/by-nc-nd/3.0> for details.

**TABLE 1. Recommended Screening Criteria for Psychosocial/Emotional Disorders in People With Diabetes**

Condition	Screening Criteria
Anxiety disorders	<ul style="list-style-type: none"> <li>• Patient exhibiting anxiety regarding diabetes complications, insulin injections, medications, or hypoglycemia that affects self-management</li> <li>• Patient expressing fear, dread, or irrational thoughts</li> <li>• Patient showing anxiety symptoms (i.e., social withdrawal)</li> </ul>
Depression	<ul style="list-style-type: none"> <li>• Screen annually, especially in those with history or symptoms of depression</li> <li>• Screen at the beginning at diagnosis of complications or change in medical status</li> </ul>
Disordered eating behavior	<ul style="list-style-type: none"> <li>• Hyperglycemia and weight loss are unexplained based on self-reported behaviors</li> </ul>
Serious mental illness	<ul style="list-style-type: none"> <li>• Screen for prediabetes and diabetes annually in people prescribed atypical antipsychotics</li> </ul>

**TABLE 2. Situations That Warrant Referral of a Person With Diabetes to a Mental Health Provider for Evaluation and Treatment**

• If self-care remains impaired in a person with diabetes distress after tailored diabetes education
• If a person has a positive screen on a validated screening tool for depressive symptoms
• In the presence of symptoms or suspicions of disordered eating behavior, an eating disorder, or disrupted patterns of eating
• If intentional omission of insulin or oral medication to cause weight loss is identified
• If a person has a positive screen for anxiety or fear of hypoglycemia
• If a serious mental illness is suspected
• In youth and families with behavioral self-care difficulties, repeated hospitalizations for diabetic ketoacidosis, or significant distress
• If a person screens positive for cognitive impairment
• Declining or impaired ability to perform diabetes self-care behaviors
• Before undergoing bariatric or metabolic surgery and after surgery if assessment reveals an ongoing need for adjustment support

also have this benefit or whether people at lower cardiovascular risk would similarly benefit from these agents.

### **Assess and Refer for Mental Health Issues**

Psychological disorders, including anxiety disorders, depression, disordered eating behavior, and serious mental illness, are more common in people with diabetes than those without diabetes. Furthermore, symptoms of psychological conditions can compromise diabetes self-management and must be addressed. To tackle this critical issue and provide additional guidance, the Standards now include psychosocial disorders in their expanded list of common comorbidities of diabetes. Screening, using validated and age-appropriate measures, is recommended using the criteria shown in Table 1.

After a patient screens positive in a mental health assessment, the question becomes, what next? The Standards provides a list of situations that warrant referral to a mental health provider, preferably one with experience in diabetes who will work in conjunction with the patient's diabetes treatment team (Table 2).

### **First-Line Treatment Options for Hypertension Expanded**

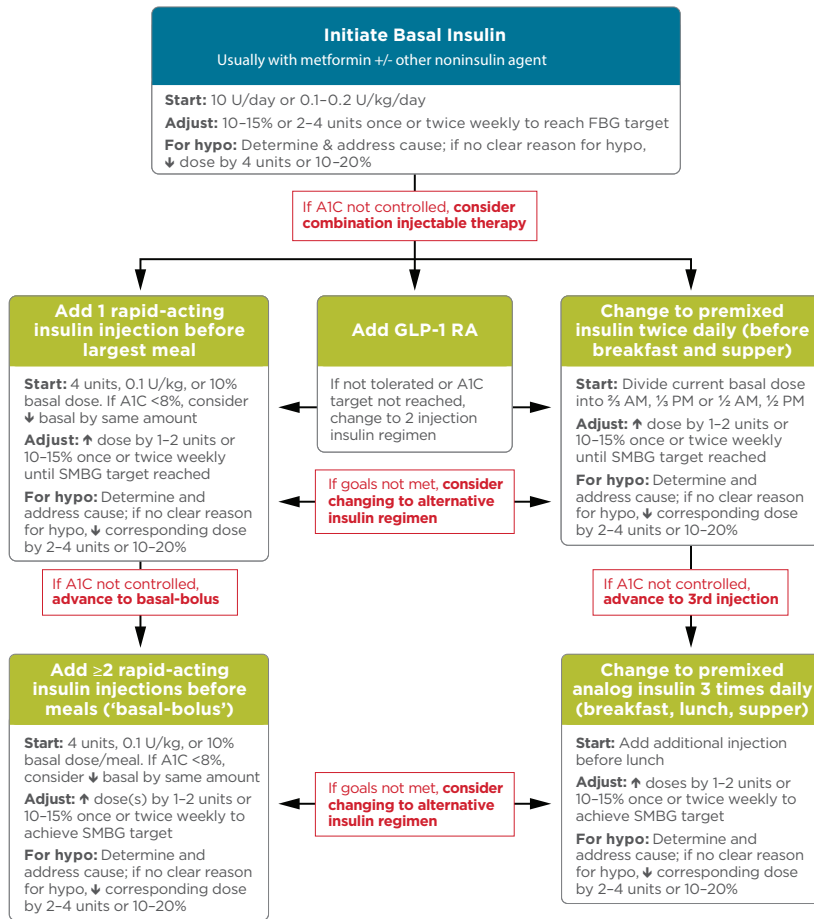
- Any of four drug classes—ACE inhibitors, angiotensin II receptor blockers (ARBs), thiazide-like diuretics, or dihydropyridine calcium channel blockers—shown to lower the risk of cardiovascular events may be used as first-line agents to treat hypertension (blood pressure >140/90 mmHg) *in people with diabetes who don't have albuminuria (urinary albu-*

*min-to-creatinine ratio*  $\geq 30$  mg/g creatinine).

- Patients with albuminuria and hypertension should be prescribed an ACE inhibitor or ARB.
- If a patient has a blood pressure >160/100 mmHg, starting with two antihypertension medications—either as two pills or as a single-pill combination therapy—is recommended.

### **Consider the Cost to the Patient**

The 2017 Standards section on pharmacologic approaches to glycemic treatment includes two new tables (6) that provide a comparison of medication list prices with the primary goal of highlighting the importance of cost considerations when prescribing antihyperglycemic treatments.



**FIGURE 1.** Combination injectable therapy for type 2 diabetes. FBG, fasting blood glucose; GLP-1 RA, GLP-1 receptor agonist; hypo, hypoglycemia; SMBG, self-monitoring of blood glucose. Adapted with permission from Inzucchi et al. (5).

**Metformin Linked to B12 Deficiency**

A new study prompted the addition of a recommendation to consider the periodic measurement of vitamin B12 levels in patients taking metformin long term due to an elevated risk for deficiency.

**Additional Insulin Treatment Pathways for Type 2 Diabetes**

A new insulin treatment algorithm (Figure 1) was unveiled in 2017 that gives providers and patients more options in terms of treatment strategy.

- As before, start with basal insulin, with or without other agents.
- If the A1C target is not reached after optimally titrating basal insulin, proceed with any of three similarly effective intensification strategies:

- Add a rapid-acting insulin injection before largest meal
- Add a GLP-1 receptor agonist
- Change to premixed insulin twice daily (before breakfast and supper).
- If goals are not met, additional insulin injections (basal-bolus or three times daily premixed insulin) may be added or an alternative insulin regimen of the same intensity may be considered (e.g., switching from premixed insulin to a basal-bolus insulin regimen).

**Position Statement Highlights**

**Neuropathy Statement**

Effective Treatments for Pain  
There are effective ways to treat neuropathic pain, and this position statement (1) makes a major contri-

bution in clarifying recommendations for pain management. Pregabalin or duloxetine are recommended as the initial approach to the treatment of neuropathic pain, whereas gabapentin and cyclic antidepressants may also be considered, although each has drawbacks. Tapentadol ER, a long-acting opioid analgesic, is approved by the U.S. Food and Drug Administration for the treatment of neuropathic pain; however, there is a high risk for addiction and safety concerns, so this medication is not generally recommended as a first- or second-line treatment.

**Physical Activity/Exercise Statement**

Vigorous Exercise Gets Nod  
The core recommendations for adults with diabetes remain unchanged—150 minutes of physical activity spread over 3 or more days, with no more than 2 consecutive days without activity—but the details have changed. Whereas in previous years “moderate-intensity” exercise was recommended, ADA has now opened the door to “moderate-to-vigorous” intensity activity. Furthermore, younger or more physically fit individuals may, instead of 150 min/week, exercise for 75 min/week at a vigorous intensity.

**Standing Up for Blood Glucose Benefits**

Whereas previously the ADA recommended breaking up sedentary activity every 90 minutes, new evidence for blood glucose benefits prompted a change to this recommendation, which now says that prolonged sitting should be interrupted every 30 minutes.

**Finding Balance in Older Adults**

The position statement provides new guidance on the types of physical activity that are particularly beneficial for older adults, who are at increased risk of developing functional limitations. Flexibility and balance training, particularly yoga and tai chi, are recommended for older adults 2–3 times weekly.

**TABLE 3. Classification of Hypoglycemia**

Level	Glycemic Criteria	Description
Glucose alert value (level 1)	≤70 mg/dL (3.9 mmol/L)	Sufficiently low for treatment with fast-acting carbohydrate and dose adjustment of glucose-lowering therapy
Clinically significant hypoglycemia (level 2)	<54 mg/dL (3.0 mmol/L)	Sufficiently low to indicate serious, clinically important hypoglycemia
Severe hypoglycemia (level 3)	No specific glucose threshold	Hypoglycemia associated with severe cognitive impairment requiring external assistance for recovery

### Hypoglycemia Statement

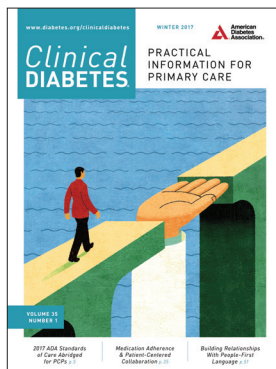
#### New Definitions

Although the ADA's definition of hypoglycemia has changed (Table 3) (2), characterizing blood glucose levels <54 mg/dL as "clinically significant hypoglycemia" mainly for the purposes of clinical research, the message to patients remains the same: a blood glucose ≤70 mg/dL is sufficiently low for treatment with a fast-acting carbohydrate. For providers, if a patient reports a blood glucose level ≤70 mg/dL,

dose adjustment may be warranted as well.

### References

- American Diabetes Association. *Standards of Medical Care in Diabetes—2017*. Diabetes Care 2017;40(Suppl. 1):S1–S135
- Pop-Busui R, Boulton AJM, Feldman EL, et al. Diabetic neuropathy: a position statement by the American Diabetes Association. Diabetes Care 2017;40:136–154
- International Hypoglycaemia Study Group. Glucose concentrations of less than 3.0 mmol/L (54 mg/dL) should be reported in clinical trials: a joint position statement of the American Diabetes Association and the European Association for the Study of Diabetes. Diabetes Care 2017;40:155–157
- Colberg, SR, Sigal RJ, Yardley JE, et al. Physical activity/exercise and diabetes: a position statement of the American Diabetes Association. Diabetes Care 2016;39:2065–2079
- Inzucchi SE, Bergenstal RM, Buse JB, et al. Management of hyperglycemia in type 2 diabetes, 2015: a patient-centered approach: update to a position statement of the American Diabetes Association and the European Association for the Study of Diabetes. Diabetes Care 2015;38:140–149
- American Diabetes Association. Pharmacologic approaches to glycemic treatment. Sec. 8. In *Standards of Medical Care in Diabetes—2017*. Diabetes Care 2017;40(Suppl. 1):S64–S74



On the cover: "Bridging the Gap." By James Steinberg. ©James Steinberg 2013.

## IMAGES WANTED FOR THE COVER OF CLINICAL DIABETES

You are invited to submit images for use on the cover of *Clinical Diabetes*.

### Submission and Selection

Cover image submission and selection is completely independent of article submission and the peer-review process. Images sent for consideration on the cover are not required to be related to an article submitted to or published in the journal.

### Specifications

You must own copyright to the image and, if chosen, must grant ADA unrestricted free use of the image to be published on the cover of the journal as well as in other ADA publications and marketing materials. If your image is selected, you must be able to provide the file in TIFF or EPS format, with a minimum resolution of 300 dpi and no larger than 2 MB.

### More Information

Send cover image submissions to [khok@diabetes.org](mailto:khok@diabetes.org).

More details at <http://clinical.diabetesjournals.org/content/images-wanted-cover-clinical-diabetes>.