



# Deficits of Tactile Passive Perception Acuity in Patients With Schizophrenia

Dan Liu<sup>1</sup>, Hong Zhen Fan<sup>1</sup>, Wen Xuan Zhao<sup>1</sup>, Yun Hui Wang<sup>1</sup>, Dong Li<sup>1</sup>, Jing Long Wu<sup>2</sup>, Tian Yi Yan<sup>3\*</sup> and Shu Ping Tan<sup>1\*</sup>

<sup>1</sup> Huilongguan College of Clinical Medicine, Peking University, Beijing Huilongguan Hospital, Beijing, China, <sup>2</sup> School of Mechatronical Engineering, Intelligent Robotics Institute, Beijing Institute of Technology, Beijing, China, <sup>3</sup> School of Life Science, Beijing Institute of Technology, Beijing, China

**Background:** Scarce literature has yet to characterize the tactile discrimination capability as well as the underlying mechanism of tactile deficits in psychotic disorder. In particular, very little is known regarding the tactile perception acuity in schizophrenia.

**Methods:** A total of 131 clinically stable patients with schizophrenia (SCZ) and 79 healthy control (HC) volunteers were enrolled in the study. All the participants were tested on a tactile stimulus device which could quantify the tactile discrimination capability with right index finger scanned over the angles via the passive finger-movement apparatus. The MATRICS Consensus Cognitive Battery (MCCB) was adapted to assess the neurocognition of the participants. Correlation analysis and multivariate linear regression analysis were performed to investigate the relationship between tactile perception performance and neurocognitive function.

**Results:** It was discovered that there existed a significant deficits in the tactile passive perception acuity (i.e., tactile angle discrimination threshold) in patients with schizophrenia compared with their healthy controls ( $F_{(3,206)} = 11.458, P = 0.001$ , partial  $\eta^2 = 0.053$ ). The MCCB total score and its six domains were significantly lower in SCZ patients than those in HCs (all  $p < 0.001$ ). In the SCZ group, the composite score of the MCCB ( $r = -0.312, P < 0.001$ ) and domains of neurocognition including speed of processing ( $r = -0.191, P = 0.031$ ), attention/vigilance ( $r = -0.177, P = 0.047$ ), working memory ( $r = -0.316, P < 0.001$ ), verbal learning ( $r = -0.332, P < 0.001$ ), visual learning ( $r = -0.260, P = 0.004$ ), and reasoning and problem solving ( $r = -0.209, P = 0.018$ ) showed significant negative correlations with the tactile angle discrimination threshold. Multivariate linear regression analysis revealed that neurocognition impairment, especially the decline of working memory ( $B = -0.312, P < 0.001$ ), underpin the tactile perception discrimination deficits in patients with SCZ.

**Conclusion:** To the best of our knowledge, this is the first study to unravel the deficits of tactile passive perception acuity and its underlying neurocognition basis in patients with SCZ. This finding adds novel evidence to the subtle variation in haptic discrimination skills in schizophrenia which contributes to a more comprehensive understanding of the sensory profiles of this disorder.

**Keywords:** schizophrenia, tactile passive perception acuity, angle discrimination thresholds, cognition, working memory

## OPEN ACCESS

### Edited by:

Kiyoto Kasai,  
University of Tokyo, Japan

### Reviewed by:

Baoci Shan,  
Chinese Academy of Sciences, China  
Yuan-Jian Yang,  
Jiangxi Mental Hospital, China

### \*Correspondence:

Shu Ping Tan  
shupingt@126.com  
Tian Yi Yan  
yantianyi@bit.edu.cn

### Specialty section:

This article was submitted to  
Schizophrenia,  
a section of the journal  
Frontiers in Psychiatry

**Received:** 11 December 2019

**Accepted:** 09 September 2020

**Published:** 27 October 2020

### Citation:

Liu D, Fan HZ, Zhao WX, Wang YH,  
Li D, Wu JL, Yan TY and Tan SP (2020)  
Deficits of Tactile Passive Perception  
Acuity in Patients With Schizophrenia.  
Front. Psychiatry 11:519248.  
doi: 10.3389/fpsy.2020.519248

## INTRODUCTION

Schizophrenia (SCZ) is a major psychiatric disorder characterized by a wide range of neurocognitive deficits (1, 2) and somatosensory disturbances (3). Patients with SCZ exhibit reduced sensory gating in the somatosensory domain (4) and attenuated pain sensitivity (5, 6). Somatosensory disturbances precede the onset of psychosis and can be found in drug-naïve patients (7). In addition, lack of somatosensory attenuation is related to aberrant sense of agency, which may spawn a misattribution of self-generated actions to external sources, thus contributing to development of psychotic symptoms, such as auditory hallucinations and delusions of control (8). For instance, some studies showed that the classical rubber hand illusion (RHI) (9–11), in which individuals misattribute tactile sensations “felt” by their real hand hidden from view to a rubber prosthetic hand that they “see” being tactilely stimulated in synchrony, was enhanced in SCZ patients compared with normal controls (12). Other studies using a new induction procedure of the RHI relying on tactile expectation rather than proper visuo-tactile stimulation further demonstrated that schizophrenia individuals exhibited a weaker sense of ownership over the rubber hand than did healthy controls (13). Moreover, decreased spatial acuity and impaired perceived intensity in the processing of tactile stimuli are observed in the biological relatives of SCZ patients (14), and the tactile extinction phenomenon, a repetitively-reported clinical sign of parietal lobe disease (15), has been found in schizophrenia patients (16). These findings suggest impaired tactile perception in SCZ patients and its potential “trait” characteristic.

Tactile perception involves the complementary interaction of the bottom-up peripheral sensory process and top-down central cognitive mechanisms for detection and sensation of objects and discrimination and evaluation of their size, shapes, and surface characteristics (17, 18). It is well-documented that tactile perceptual skills decline with aging (17, 19–23), and age seems to have a stronger influence on the perceptive-evaluative capacities (i.e., top-down processes, such as cortical neuronal tuning properties, lateral inhibition, attention, and working memory) than on the stimulus-driven sensitivity (i.e., bottom-up processes, such as skin characteristic and receptor density) (17). In addition, studies have shown that geometric properties of objects, which are generally composed of shape and size, typically necessitate the cutaneous and kinesthetic input to serve the haptic processing (24). In other words, shape discrimination of objects under certain circumstances can be revealed by skin indentation because they fit within the fingertip, whereas shape perception of objects with contours that extend beyond the fingertip scale frequently relies on the kinesthetic inputs. Moreover, albeit Gibson et al. (25) posited that active touch deemed as active exploration and manipulation of surfaces and objects with our hand (26) is more likely to yield objective percepts and veridical perception, whereas passive touch referred to stimulating the stationary finger or hand with a moving or static external stimulus (26) tends toward subjectivity (27), neuroimaging evidence suggests that somatosensory regions activated by active shape discrimination

are highly in concordance with passive shape discrimination (28). Furthermore, it is of great indispensability to be aware of the extent to which the cutaneous system is limited by its ability to resolve spatial and temporal details presented on the skin. Notably, accumulating evidence indicates that tactile spatial acuity varies significantly across the body surface, and the fingertip is far more sensitive than the palm and other superficial parts of the body, such as nose, forehead, belly, thigh, or sole (24).

Studies with regard to somatosensory discrimination, such as discrimination between different textures, sizes, and shapes of objects; two-point tactile discrimination; stereognosis; and graphesthesia are scarce, reflecting a critical gap since the somatosensory system serves as an important foundation for many aspects of human development, including fine motor skills (e.g., grasp) and social and communication skills (29). Of striking note, impaired sensory discrimination task performance has been demonstrated in autism spectrum disorder (ASD) patients compared with typically developing (TD) controls (30–33); for example, high-functioning people with ASD exhibited defective right-handed graphesthesia (34) and poorer stereognosis performances (35) compared with TD individuals. Originated from severe neurodevelopmental disorders, sensory perception dysfunction, which is characterized by failing to perceive and integrate multisensory modality information, is one of the most vital characteristics shared by SCZ and ASD. This inability to process multisensory system information may lead to misinterpretation of social information, therefore contributing to the social cognition deficits across these two mental disorders.

Tactile spatial discrimination is deemed as one of the main manual learning and memory skills in humans. Studies have demonstrated that abnormal somatosensory information processing contributes to the functional decline of tactile shape discrimination in patients with mild cognitive impairments and Alzheimer’s disease (36). The somatosensory system is a diverse sensory system that comprises the receptors and processing centers, which make up sensory modalities (37, 38), and the skin, as the body’s largest organ, is the first point of contact with the environment and encodes information from many different sources in addition to providing a sense of boundary or self and non-self discrimination; thus, the skin is a backdrop to all perceptual experiences (39). However, to the best of our knowledge, tactile angle acuity discrimination in patients with SCZ has not yet been characterized, and its underlying neurocognitive basis remains poorly understood. With this above-mentioned consideration in mind, we hypothesized that (1) tactile angle discrimination thresholds would be significantly higher in SCZ patients than in their healthy counterparts, and that (2) well-accepted neurocognitive deficits in the SCZ [i.e., in whom impaired cognition is a hallmark (40)] are negatively associated with the tactile perception acuity, especially in certain domains of neurocognition, such as working memory.

## MATERIALS AND METHODS

### Participants

This study enrolled 131 clinical stable patients with a diagnosis of schizophrenia or schizoaffective disorder (41) who were being

treated with stable antipsychotic medication during the study period and 79 healthy controls without personal or family history of psychiatric illness assessed with the Mini-International Neuropsychiatric Interview (42, 43). All the patients were recruited from Beijing Huilongguan Hospital (Huilongguan College of Clinical Medicine, Peking University, Beijing, China) from November 1, 2017 to December 31, 2018, and healthy controls were volunteers in the surrounding communities. SCZ or schizoaffective disorder was diagnosed based on the Structured Clinical Interview for the criteria of the Diagnostic and Statistical Manual of Mental disorders, Fourth Edition (41). Inclusive criteria were as follows: (1) age between 18 and 60 years, (2) more than 6 years of full-time education to ensure that participants can understand task instructions, (3) normal or corrected-to-normal auditory and visual acuity to eliminate tactile dominance due to other modality defects, (4) sufficient command of the Mandarin Chinese language without dysarthria, and (5) right handedness measured by the Edinburgh Handedness Inventory (44). Participants with remarkable abnormality in motor or sensory systems and deep tendon reflexes, loss of tactile sensation or any unusual experiences with haptic input, mental retardation or neurological illness, severe depression or anxiety symptoms, alcohol/substance dependence or abuse, or presence of any physical disease that could impair tactile sensation, and pregnant or lactating women were excluded in this study. The study was approved by the Ethics Committee of Beijing Huilongguan Hospital and was conducted in line with the Declaration of Helsinki. All the participants provided written informed consent after full explanation of the study procedure. Study participants were given a certain monetary inconvenience allowance for their full participation.

## Clinical Assessment

Clinical characteristics of SCZ patients were collected by two experienced psychiatrists in a direct interview. When it was difficult to obtain clinical information via the patients *per se*, medical records, as well as the information provided by their caregivers, would be combined. Socio-demographic and clinical variables, including duration of the psychosis and current pharmacological treatment, were assessed. The dose of antipsychotics was converted to the chlorpromazine equivalent (45). The Positive and Negative Symptom Scale (PANSS) (46) was adopted to assess the severity of the psychotic symptoms of SCZ by four attending psychiatrists, with an accepted inter-rater consistency (Kappa value, 0.85). In addition, the severity of affective symptoms was assessed using the Calgary Depression Scale for Schizophrenia (CDSS) (47, 48), with CDSS score of  $\geq 6$  points as significant depression in SCZ. The CDSS evaluates depression, hopelessness, self-depreciation, guilty ideas of references, pathological guilt, morning depression, early wakening, suicide, and observed depression. Each item is scored from 0 to 3, with a higher score indicating more severe depression. Healthy controls were assessed using the 9-item Patient Health Questionnaire (PHQ-9) (49) and the Generalized Anxiety Disorder (GAD-7) scale (50) ( $\geq 5$  points as the cut-off points for both scales) to screen concomitant serious depression and anxiety symptoms.

## Neurocognition Measurement

Neurocognitive function of the participants was assessed using the Measurement and Treatment Research to Improve Cognition in Schizophrenia (MATRICS) Consensus Cognitive Battery (MCCB) (51), which derives from the National Institute of Mental Health's MATRICS, and was initially used as a primary outcome measure for clinical trials of cognitive assessment in SCZ. The MCCB neuropsychological measure consists of 10 tests which converged into seven cognitive domains: (1) Speed of Processing, which is measured with the Trail Making Test Part A, the Brief Assessment of Cognition in Schizophrenia-symbol coding, and Category Fluency Test-Animal Naming and mainly reflects the visual scanning speed or visuo-motor tracking and verbal processing speed; (2) Attention/vigilance, which is depicted with Continuous Performance Test-Identical Pairs; (3) Working Memory, which is assessed with Wechsler Memory Scale-III-Spatial Span (nonverbal working memory), and Digit Sequencing (verbal working memory); (4) Verbal Learning, which is portrayed with the Hopkins Verbal Learning Test-Revised; (5) Visual Learning, which is measured with the Brief Visuospatial Memory Test-R; (6) Reasoning and Problem Solving, which is assessed with Maze Test (Neuropsychological Assessment Battery-Mazes), a reflection of planning and executive function; and (7) Social cognition, which is measured with the Mayer-Salovey-Caruso Emotional Intelligence Test. MCCB performances were converted to T scores (mean, 50; standard deviation, 10) based on the raw scores adjusted for age, sex, and years of education, with higher scores indicating better neurocognitive performance. The MCCB cognition assessment was administrated by two trained clinical psychologists who had over 5 years of experience in psychometric testing, with a satisfactory inter-rater consistency (Intraclass Correlation Coefficient, 0.92).

## TASK PARADIGM AND PROCEDURE

The tactile angle discrimination apparatus via finger sensation was employed to detect the haptic perception acuity of the participants in the current study, as previously described (36, 52). The tactile perception device is composed of an electric conveyer belt that moves the angles varying in size along the horizontal axis in the transverse plane. Within each trial, a pair of angles with one reference angle and another comparison angle were successively presented to the participant to make an angle-comparison judgment (there were three alternative choices, i.e., "great than," "smaller than," and "equal to," after the presence of the second angle). The least reference angle was  $60^\circ$ , and the predetermined comparison angles were larger than the reference angle by  $4^\circ$ ,  $8^\circ$ ,  $12^\circ$ ,  $16^\circ$ ,  $20^\circ$ ,  $24^\circ$ ,  $32^\circ$ , and  $50^\circ$ . The angles were mounted below an imaginary bisector such that two raised arms (i.e., 0.5 mm) were symmetrically horizontally placed above, with the apex of the angles always pointing to the right. In other words, all of the angles moved in the fixed parallel plane over a 40.0-mm square base, and the angle size was set as the sole difference. The electric conveyer belt movement was confined to a maximum range of 200.0 mm, and the movement speed of the

angles was maintained at 5.0 mm/s. All angles were moved from the end-points toward the apex. A pseudorandom order was used to present the reference angle and the comparison angle to the participants. Participants were instructed to render their right hand immobile so that only their right index finger was able to contact with the angles, and the participants were asked to avoid using any visual feedback during the task as best as possible. Each participant underwent at least 10 practice trials prior to the start of the test. Subsequently, each pair of angles was presented 10 times in a pseudorandom order, and each participant completed 80 angle discrimination trials.

## Statistical Analysis

Demographics of participants, including age and years of education, were compared using a Student's *t*-test, and chi-squared test was used for categorical variables, such as sex. The duration of psychosis, antipsychotics, and the PANSS scale scores were described, and analysis of covariance was employed for the comparison of MCCB scores between groups, with sex and years of education as the covariates. A two-way of analysis of variance (ANOVA) was performed to investigate the differences in the tactile angle discrimination threshold between the two groups, with group (patient vs. control) as an inter-subject factor, sex (male vs. female) as a within-subject factor, and age and years of education as covariates. Moreover, partial correlation analysis and multiple linear regression were performed to analyze the relationship between neurocognition function and angle discrimination threshold. All statistical analyses were performed using SPSS for Windows version 20.0 (IBM Corp, Armonk, NY, USA). For all tests, significance was set at *P*-value < 0.05.

## RESULTS

### Demographic, Clinical, and Neurocognitive Characteristics of Participants

A total of 131 schizophrenia patients (the SCZ group) and 79 healthy controls (HCs) participants (the HC group) were included in the current study. There was a higher proportion of males in SCZ group than in HC group (54.96% vs. 36.71%;  $\chi^2 = 6.975$ ,  $P = 0.008$ ). Moreover, schizophrenia patients had lower years of education than their healthy counterparts ( $13.09 \pm 2.95$  vs.  $14.24 \pm 3.01$ ;  $t = 2.714$ ,  $P = 0.007$ ). No significant age difference was observed between groups ( $t = 1.698$ ,  $P = 0.091$ ). Both schizophrenia patients (CDSS:  $2.95 \pm 3.72$ ) and healthy controls (PHQ-9:  $1.68 \pm 2.68$  vs. GAD-7:  $1.50 \pm 2.31$ ) did not show notable affective symptoms. All the participants were right-handed. As for the neurocognition assessment, SCZ patients showed significant poorer performances in the domains of processing speed, attention/vigilance, working memory, verbal learning, visual learning, reasoning and problem solving, and the composite scores than did HCs (Table 1).

### Tactile Perception Acuity (Angle Discrimination Threshold) Deficits in Schizophrenia

In our study, the results of the tactile perception trial reported by the participants were logarithmically transformed to the angle

discrimination threshold via plotting a logistic curve function of the angular differences between the comparison and reference angles; the obtained angle discrimination threshold indicates the minimum angle size that participants could distinguish, and the smaller value of angle discrimination threshold indicates the better capability of tactile perception to distinguish the angle differences. Results of the tactile perception task performance are shown in Figure 1. The two-way ANOVA revealed a significant main effect of group ( $F_{(3, 206)} = 11.458$ ,  $P = 0.001$ , partial  $\eta^2 = 0.053$ ), but no significant main effect of sex ( $F_{(3, 206)} = 0.053$ ,  $P = 0.818$ , partial  $\eta^2 = 0.000$ ) or group\*sex interaction ( $F_{(3, 206)} = 1.676$ ,  $P = 0.197$ , partial  $\eta^2 = 0.008$ ) was observed. Male ( $30.66 \pm 20.09$ ) and female ( $27.22 \pm 16.77$ ) SCZ patients exhibited poorer performances in angle discrimination threshold than male ( $18.85 \pm 13.20$ ) and female ( $22.70 \pm 15.19$ ) HCs, respectively, indicating deficits in the tactile perception acuity in SCZ patients.

### Correlation Analysis Between Neurocognition Function, Clinical Symptoms, and Angle Discrimination Threshold

In the SCZ group, domains of neurocognition including speed of processing ( $r = -0.191$ ,  $P = 0.031$ ), attention/vigilance ( $r = -0.177$ ,  $P = 0.047$ ), working memory ( $r = -0.316$ ,  $P < 0.001$ ), verbal learning ( $r = -0.332$ ,  $P < 0.001$ ), visual learning ( $r = -0.260$ ,  $P = 0.004$ ), and reasoning and problem solving ( $r = -0.209$ ,  $P = 0.018$ ) showed significant negative correlations with the tactile angle discrimination threshold. In addition, the composite score of the MCCB ( $r = -0.312$ ,  $P < 0.001$ ) was negatively correlated with the angle discrimination threshold as well (Figure 2), revealing that poorer neurocognition performance was associated with severer deficits in the angle discrimination threshold in schizophrenic patients. However, no significant correlation was observed between social cognition ( $r = -0.056$ ,  $P = 0.530$ ) and the angle discrimination threshold. Moreover, there was no relationships between clinical symptoms obtained using the PANSS positive ( $r = 0.123$ ,  $P = 0.173$ ), PANSS negative ( $r = 0.084$ ,  $P = 0.352$ ), PANSS general psychopathology ( $r = 0.097$ ,  $P = 0.285$ ), or PANSS total score ( $r = 0.137$ ,  $P = 0.129$ ) and tactile angle discrimination threshold. In the HC group, neurocognition domains of reasoning and problem solving were marginally negatively associated with the tactile angle discrimination threshold ( $r = -0.224$ ,  $P = 0.053$ ), and no correlation between the other domains of the MCCB or the MCCB total score and tactile angle discrimination threshold was observed ( $r = -0.002$  to  $-0.110$ , all  $P > 0.05$ ) (Figure 2).

### Multivariate Linear Regression Analysis of the Tactile Angle Discrimination Threshold

A multivariate regression analysis was conducted to further assess the relationship between neurocognition domains and tactile angle discrimination thresholds in SCZ, with the angle discrimination threshold as a dependent variable and seven cognition domains as independent variables. The neurocognition domains explained 9.8% of the variance ( $R^2 = 0.098$ ,  $P < 0.001$ ; adjusted  $R^2 = 0.090$ ,  $P < 0.001$ ), and the working memory had a significant negative predictive effect on the deficits in the angle



**TABLE 1** | Demographic and clinical characteristics.

	SCZ (n = 131)	HC (n = 79)	t/ $\chi^2$	P
Age (mean/SD)	44.38 (12.34)	41.67 (10.46)	1.698	0.091
Years of education (years, mean/SD)	13.09 (2.95)	14.24 (3.01)	2.714	0.007
Sex, n (%)			6.975	0.008
Male	72 (54.96)	29 (36.71)		
Female	59 (45.04)	50 (63.29)		
Handedness, Right, n (%)	131 (100)	79 (100)		
Duration of illness (years, mean/SD)	16.87 (11.97)			
PANSS (mean $\pm$ SD)				
Positive Scores	14.06 (6.10)			
Negative Scores	21.08 (5.90)			
General Psychopathology Scores	30.89 (8.56)			
Total Scores	66.03 (15.16)			
CDSS	2.95 (3.72)			
PHQ-9		1.68 (2.68)		
GAD-7		1.50 (2.31)		
Antipsychotics, n (%)				
Typical	6 (4.58)			
Atypical	117 (89.31)			
Combination of typical and atypical	8 (6.11)			
CPZ equivalent (mean/SD, mg)	565.79 (227.73)			
MCCB measure (mean/SD)				
Speed of processing (TMT-A/BACS/CFT) <sup>a</sup>	43.58 (9.71)	57.53 (7.62)	103.513	<0.001
Attention/Vigilance (CPT-IP) <sup>a</sup>	44.31 (9.27)	56.24 (7.44)	79.048	<0.001
Working memory (SS/DS) <sup>a</sup>	46.05 (11.92)	57.08 (7.87)	42.470	<0.001
Verbal learning (HVL) <sup>a</sup>	46.04 (11.30)	56.76 (8.06)	45.066	<0.001
Visual learning (BVMT) <sup>a</sup>	44.26 (10.17)	52.62 (8.97)	29.475	<0.001
Executive function (NAB-Maze) <sup>a</sup>	44.02 (0.99)	52.62 (8.97)	53.929	<0.001
Social cognition (MSCEIT) <sup>a</sup>	47.03 (0.28)	50.16 (10.23)	2.491	0.116
Composite Score <sup>a</sup>	43.55 (9.88)	56.51 (6.89)	89.251	<0.001

CPZ equivalent: chlorpromazine equivalent. PANSS, Positive and Negative Symptoms Scale; CDSS, Calgary Depression Scale for Schizophrenia; PHQ-9, 9-item Patient Health Questionnaire; GAD-7, 7-item Generalized Anxiety Disorder Scale; MCCB, the MATRICS Consensus Cognitive Battery; TMT-A, Trail Making Test Part A; BACS, the Brief Assessment of Cognition in Schizophrenia (BACS) -symbol coding; CFT, Category Fluency Test-Animal Naming; CPT-IP, Continuous Performance Test-Identical Pairs; SS, Spatial Span; DS, Digit Sequencing; HVL, Hopkins Verbal Learning Test; BVMT, Brief Visuospatial Memory Test; NAB-Maze, Neuropsychological Assessment Battery-Mazes, NAB-MAZES; MSCEIT, Mayer-Salovey-Caruso Emotional Intelligence Test. <sup>a</sup>ANCOVA was employed to compare the differences of MCCB between groups, with gender and years of education as covariates, and statistic F value were shown.

discrimination threshold ( $B = -0.312$ ,  $P < 0.001$ ) in SCZ, while neither of the other six domains made a contribution to the model (Figure 3, Table 2).

## DISCUSSION

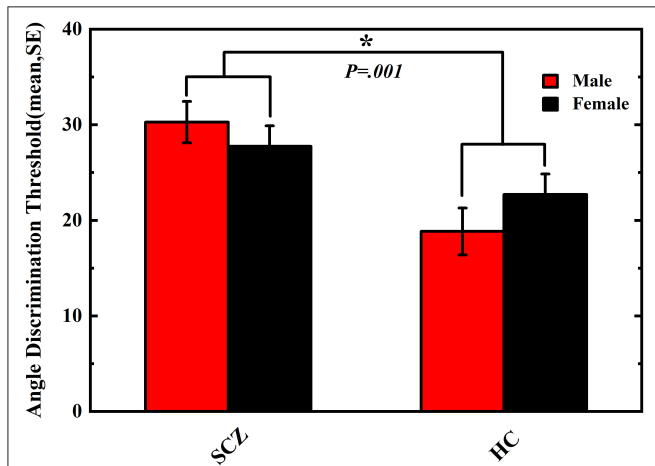
While a considerable amount of studies have investigated somatosensory disturbance and motor incoherence in SCZ, much less is known about fine haptic skills of this population. Accordingly, we investigated the tactile angle discrimination capability in schizophrenia patients with a special angle discrimination device that could quantify tactile perception acuity. The current study revealed significant deficits in the angle discrimination threshold capacities in schizophrenia patients compared with age-matched HCs. Moreover, we found

that neurocognitive function, especially working memory, was negatively related to the angle discrimination threshold performance, suggesting that neurocognitive impairment underlies the deficits in tactile perception acuity (measured as tactile angle discrimination threshold) in SCZ. The findings shed new light on the underlying characteristics of the somatosensory disorder in patients with SCZ.

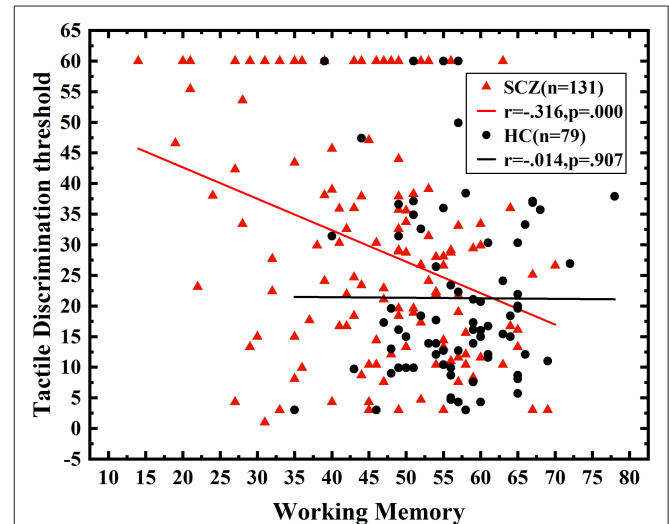
Our angle discrimination threshold paradigm with a pair of angles randomly presented to participants via passive touch without visual feedback includes the following possible procedures: (i) encoding the first angle, extracting the relevant parameter, and storing the parameter value in memory; (ii) encoding the second angle, extracting the relevant parameter, and comparing the second angle parameter with the memory of the first angle parameter; and (iii) making a decision based on the outcome of the comparison (53). Although neural

mechanisms underlying deficits in haptic perception acuity and its relationship with working memory impairment remain unclear, we speculate that the tactile angle discrimination

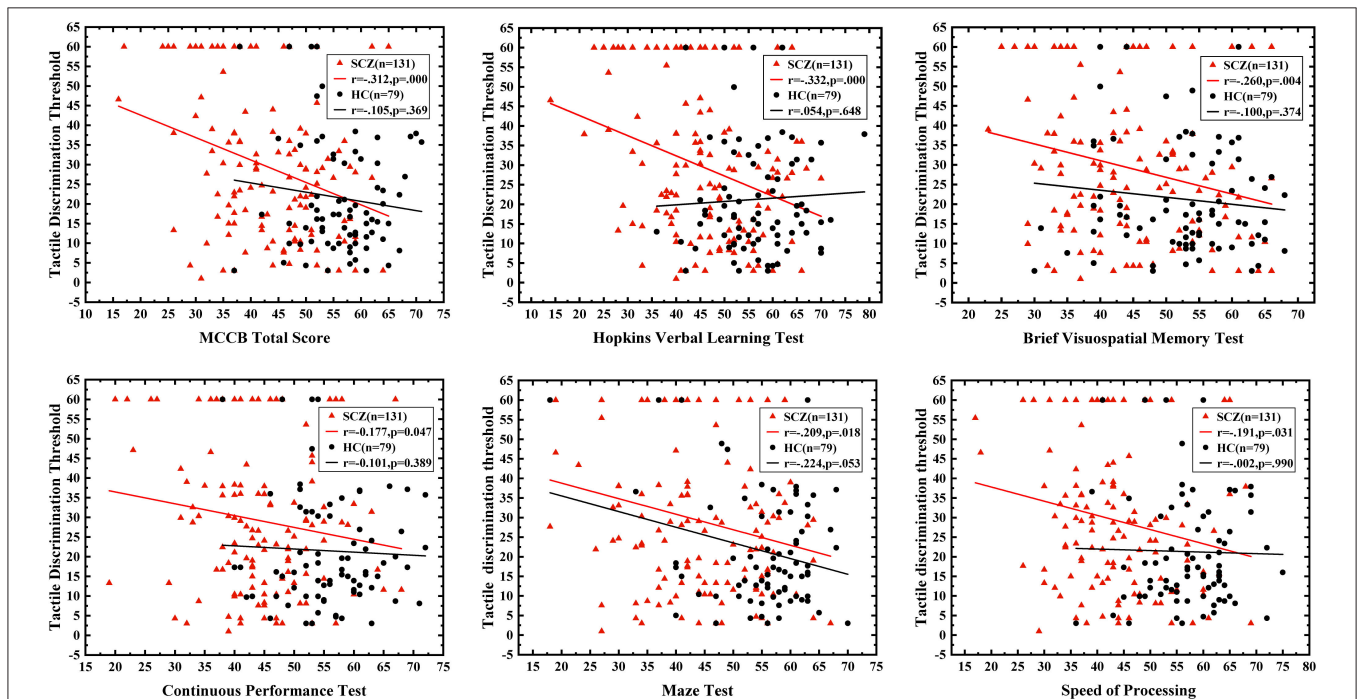
procedure activates a widely distributed cerebral network that mainly includes areas involved in the initial processing of skin indentations (i.e., primary and secondary somatosensory cortex)



**FIGURE 1 |** Angle discrimination threshold of schizophrenia patients and healthy controls. Comparison of angle discrimination thresholds in male and female participants between schizophrenia and healthy control. Vertical error bar represents standard error of the mean. Asterisk means  $P < 0.05$ . The difference of tactile angle discrimination threshold between SCZ group and HC group was significant ( $P = 0.001$ ).



**FIGURE 3 |** The correlation between working memory and angle discrimination threshold. Correlation analysis between working memory and tactile angle discrimination thresholds. The performance of working memory was negatively correlated with the angle discrimination threshold in SCZ ( $r = -0.316, P < 0.001$ ).



**FIGURE 2 |** The correlation between neurocognition function and tactile angle discrimination threshold. The red triangle represents schizophrenic patients, and the black circle refers to healthy controls. The correlation between neurocognition domains and tactile angle discrimination threshold of the two groups was shown. All the MCCB domain except for the social cognition were negatively associated with tactile angle discrimination threshold, and the correlation was only significant in patients group.

**TABLE 2 |** The multivariate linear regression (Enter) model of tactile angle discrimination threshold.

	Coefficients		<i>t</i>	<i>P</i>	95%CI for B
	B	Std.Error			
Speed of Processing	0.143	0.242	1.158	0.249	−0.199~0.760
Attention/Vigilance	0.017	0.214	0.155	0.877	−0.390~0.457
Working memory	<b>−0.312</b>	<b>0.134</b>	<b>−3.691</b>	<b>&lt;0.001</b>	<b>−0.757~−0.229</b>
Verbal learning	−0.204	0.196	−1.641	0.103	−0.710~0.067
Visual learning	−0.032	0.232	−0.249	0.804	−0.517~0.401
Executive function	−0.110	0.178	−1.054	0.294	−0.540~0.165
Social cognition	0.028	0.166	0.301	0.764	−0.279~0.379

Standardized beta coefficients were displayed. Working memory had significant negative predict effect to the deficits in tactile angle discrimination threshold in SCZ ( $B = -0.312$ ,  $P < 0.001$ ).

(54, 55), higher-order areas for computation and elaborate reconstruction of shapes [i.e., anterior part of the intraparietal sulcus (25)], and the prefrontal cortex (56), which is activated in tactile working memory processing. In line with the pre-existing findings showing that working memory contributes to the performance of somatosensory discrimination (53), our study revealed that SCZ patients (but not healthy controls) with more severe working memory impairment exhibited poorer tactile angle discrimination ability. The findings indicate that brain regions involved in basic neurocognitive processing underpinned by a more cohesive pattern of brain activation are activated in schizophrenic patients, but not in healthy controls, and the cognitive load is significantly increased in patients with SCZ for better identification of the magnitude between a comparison angle and a reference angle.

Although the pathophysiology of SCZ remains to be determined, accumulating evidences have demonstrated elevated presynaptic dopamine function in the striatum (57) as well as the neuroanatomical and electrophysiological alterations in the medial temporal lobe, including the hippocampus and different areas of the prefrontal cortex (58), in SCZ patients. And current findings on genetic and environmental causes of SCZ have linked this disorder to abnormal neurodevelopment (59, 60). Human brain development lasts more than two decades, from embryonic patterning *in utero* to synaptic pruning in adolescence (61), and there are several sensitive windows when even the most subtle variation in the organization of brain circuits could contribute to functional alterations that persist throughout one's lifetime (62); some functional alterations are linked to primary functions, such as vision and touch, and others are associated with more complex tasks that involve cognitive experiences, such as language acquisition or specific social behaviors (63).

Similar to neurons in the central nervous system, epithelial tissues, such as tactile corpuscles in the skin's dermal papillae that function in tactile sensation, derive from the ectoderm. It is presumable that tactile perception acuity deficits are associated with neurocognitive impairment caused by neurodevelopmental abnormality from phylogenetic and ontogenetic perspectives. Notably, the duration of disease

and PANSS scores, which could partly reflect the severity of the disease, are not associated with the tactile perception acuity in SCZ, suggesting that subtle variations of haptic discrimination skills in SCZ are not linked to the course or severity of the disease, which in line with the previous studies showing that tactile perception disturbance precedes the onset of disease (7). Therefore, rather than as a "state" indicator that varies with the course of the disease, tactile perception acuity deficits in SCZ are more likely to be linked to the disease risk and promises to be used as an potential "trait" biomarker for assisting disease diagnoses and prediction of the efficacy and outcomes.

The present study has some strengths. To the best of our knowledge, few studies have focused on tactile perception acuity capability in SCZ, and this study is the first to investigate the tactile angle discrimination performance and its neurocognitive basis in SCZ. In addition, we used continuous measurements of angle discrimination thresholds to define tactile variations, which would otherwise be difficult to assess. Further, the sample size is sufficient for a behavioral paradigm study, further supporting the robustness of our findings. However, our study has some limitations. First, both visuo-spatial and somatic codes are involved in the tactile sensation (64), and the interaction between the visual and tactile modalities might influence haptic perception (65). However, in this study, we attempted to avoid visual feedback in the current tactile stimulus task, thus the effects of vision or visual attention on tactile discrimination differences between groups could be partly negligible. Second, tactile perceptual learning (66, 67) was not investigated in the current study. However, the randomized stimulus presentation helps to attenuate the learning effects, and perceptual learning involves relatively long-lasting changes rather than only a disposable practice in an organism's perceptual system to improve the ability of the system to respond to its environment (66). Thus, the differences between SCZ patients and healthy controls are not likely to be the results of learning effects. Third, the included participants were chronic schizophrenia patients, and the effects of drugs on the present findings cannot be ruled out. Further studies are needed to determine whether there are tactile perception acuity deficits in first-episode schizophrenia patients. Fourth, since our study was a cross-sectional study without longitudinal follow-up, it is difficult to derive causal relationships based on the present findings. Further longitudinal studies are needed to determine the generalizability of the present findings.

In conclusion, this study found tactile perception acuity deficits and their association with neurocognitive impairment in schizophrenia patients. This finding adds novel evidence to the subtle variation in haptic discrimination skills in schizophrenia which contributes to a more comprehensive understanding of the sensory profiles of this disorder. Future studies examining basic perception processing capacities and their relevance to underlying genetic and molecular mechanisms are needed to determine whether the angle discrimination threshold could be used as a "trait" biomarker in SCZ for assistance in the diagnosis of diseases or the prediction of treatment efficacy and outcomes.

## DATA AVAILABILITY STATEMENT

The datasets analyzed in this article are not publicly available. Requests to access the datasets should be directed to Star950214@126.com.

## ETHICS STATEMENT

The studies involving human participants were reviewed and approved by Ethics Committee of Beijing Huilongguan Hospital. The patients/participants provided their written informed consent to participate in this study.

## AUTHOR CONTRIBUTIONS

DLiu executed the analyses, interpreted the data, and wrote the first draft of the manuscript. ST and TY conceived and designed the study, supervised the project, and gave important suggestions for the revision of the manuscript. HF undertook the statistical analyses. WZ, YW, and DLI collected the clinical data

and aided with angle discrimination trial. JW provided important technical support. All authors contributed to and have approved the final manuscript.

## FUNDING

This study was funded by the National Natural Science Foundation of China (31671145), Beijing Natural Science Foundation (7162087), and Beijing Municipal Administration of Hospitals Clinical Medicine Development of special funding (XMLX201609).

## ACKNOWLEDGMENTS

We are grateful to all authors for their technical and statistical assistance. Appreciation is also owed to the patients, clinical psychiatrists and nursing staff in Beijing Huilongguan Hospital for their participation and collaboration. The authors also thank center for psychiatric research of Beijing Huilongguan Hospital for technology platform and the reviewers for helpful comments.

## REFERENCES

- Sheffield JM, Karcher NR, Barch DM. Cognitive deficits in psychotic disorders: A lifespan perspective. *Neuropsychol Rev.* (2018) 28:509–33. doi: 10.1007/s11065-018-9388-2
- Jirsaraie RJ, Sheffield JM, Barch DM. Neural correlates of global and specific cognitive deficits in schizophrenia. *Schizophr Res.* (2018) 201:237–42. doi: 10.1016/j.schres.2018.06.017
- Carter O, Bennett D, Nash T, Arnold S, Sundram S. Sensory integration deficits support a dimensional view of psychosis and are not limited to schizophrenia. *Transl Psychiatry.* (2017) 7:e1118. doi: 10.1038/tp.2017.69
- Thoma RJ, Hanlon FM, Huang M, Miller GA, Moses SN, Weisend MP, et al. Impaired secondary somatosensory gating in patients with schizophrenia. *Psychiatry Res.* (2007) 151:189–99. doi: 10.1016/j.psychres.2006.10.011
- Chuang JY. Diminished pain perception in schizophrenia. *Lancet.* (2010) 376:87–. doi: 10.1016/S0140-6736(10)61067-7
- Boettger MK, Grossmann D, Bär K. Increased cold and heat pain thresholds influence the thermal grill illusion in schizophrenia. *Eur J Pain.* (2013) 17:200–9. doi: 10.1002/j.1532-2149.2012.00188.x
- Cristina M, Francesco R, Shergill Sukhwinder S. Aberrant force processing in schizophrenia. *Schizophr Bull.* (2017) 43:417–24. doi: 10.1093/schbul/sbw092
- Frith CD, Done DJ. Towards a neuropsychology of schizophrenia. *Br J Psychiatry.* (1988) 153:437–43. doi: 10.1192/bjp.153.4.437
- Matthew B, Jonathan C. Rubber hands 'feel' touch that eyes see. *Nature.* (1998) 391:756. doi: 10.1038/35784
- Ehrsson HH, Spence C, Passingham RE. That's my hand! activity in premotor cortex reflects feeling of ownership of a limb. *Science.* (2004) 305:875–7. doi: 10.1126/science.1097011
- Durgin FH, Evans L, Dunphy N, Klostermann S, Simmons K. Rubber hands feel the touch of light. *Psychol Sci.* (2007) 18:152–7. doi: 10.1111/j.1467-9280.2007.01865.x
- Peled A, Ritsner M, Hirschmann S, Geva AB, Modai I. Touch feel illusion in schizophrenic patients. *Biol Psychiatry.* (2000) 48:1105–8. doi: 10.1016/S0006-3223(00)00947-1
- Ferri F, Costantini M, Salone A. Upcoming tactile events and body ownership in schizophrenia. *Schizophr Res.* (2014) 152:51–7. doi: 10.1016/j.schres.2013.06.026
- Chang BP, Lenzenweger MF. Somatosensory processing in the biological relatives of schizophrenia patients: a signal detection analysis of two-point discrimination. *J Abnorm Psychol.* (2001) 110:433–42. doi: 10.1037/0021-843X.110.3.433
- Schwartz AS, Marchok PL, Flynn RE. A sensitive test for tactile extinction: results in patients with parietal and frontal lobe disease. *J Neurol Neurosurg Psychiatry.* (1977) 40:228–33. doi: 10.1136/jnnp.40.3.228
- Gambini O, Cazzullo CL, Scarone S. Interpretation of abnormal responses to the quality extinction test in schizophrenia. *J Neurol Neurosurg Psychiatry.* (1986) 49:997–1001. doi: 10.1136/jnnp.49.9.997
- Godde B, Bruns P, Wendel V, Trautmann M. Effects of age and individual experiences on tactile perception over the life span in women. *Acta Psychol (Amst).* (2018) 190:135–41. doi: 10.1016/j.actpsy.2018.08.004
- Lacey S, Sathian K. *Haptically Evoked Activation of Visual Cortex. Human Haptic Perception: Basics and Applications.* Birkhäuser Basel: Die Deutsche Bibliothek (2008).
- Dinse HR, Kleibel N, Kalisch T, Ragert P, Wilimzig C, Tegenthoff M. Tactile coactivation resets age-related decline of human tactile discrimination. *Ann Neurol.* (2006) 1:88–94. doi: 10.1002/ana.20862
- Wickremaratchi, M. Effects of ageing on touch. *Postgrad Med J.* (2006) 82:301–4. doi: 10.1136/pgmj.2005.039651
- Brodoehl S, Klingner C, Stieglitz K, Witte OW. Age-related changes in the somatosensory processing of tactile stimulation—an fMRI study. *Behav Brain Res.* (2013) 238:259–64. doi: 10.1016/j.bbr.2012.10.038
- Francisco V, Johnson KO. Spatial acuity after digit amputation. *Brain.* (2002) 125:1256–64. doi: 10.1093/brain/awf129
- Vega-Bermudez F, Johnson KO. Fingertip skin conformance accounts, in part, for differences in tactile spatial acuity in young subjects, but not for the decline in spatial acuity with aging. *Percept Psychophys.* (2004) 66:60–7. doi: 10.3758/BF03194861
- Lederer SJ, Klatzky RL. Haptic perception: a tutorial. *Atten Percept Psychophys.* (2009) 71:1439–59. doi: 10.3758/APP.71.7.1439
- Bodegård A, Geyer S, Grefkes C, Zilles K, Roland PE. Hierarchical processing of tactile shape in the human brain. *Neuron.* (2001) 31:317–28. doi: 10.1016/S0896-6273(01)00362-2
- Gibson, James J. Observations on active touch. *Psychol Rev.* (1962) 69:477–91. doi: 10.1037/h0046962
- Ballesteros S, Heller MA. *Haptic Object Identification. Human Haptic Perception: Basics and Applications.* Birkhäuser Basel: Die Deutsche Bibliothek (2008).



28. Gibson JJ. *The Senses Considered as Perceptual Systems*. New York, NY: Greenwood Press Reprint (1966). doi: 10.2307/1571911
29. Bröring T RN, Sergeant J SE. Sex differences in tactile defensiveness in children with aDHD and their siblings. *Dev Med Child Neurol*. (2008) 50:129–33. doi: 10.1111/j.1469-8749.2007.02024.x
30. Minshew NJ, Hobson JA. Sensory sensitivities and performance on sensory perceptual tasks in high-functioning individuals with autism. *J Aut Dev Disord*. (2008) 38:1485–98. doi: 10.1007/s10803-007-0528-4
31. Nakano T, Kato N, Kitazawa S. Superior haptic-to-visual shape matching in autism spectrum disorders. *Neuropsychologia*. (2012) 50:696–703. doi: 10.1016/j.neuropsychologia.2011.12.024
32. O’Riordan M, Passetti F. Discrimination in autism within different sensory modalities. *J Aut Dev Disord*. (2006) 36:665–75. doi: 10.1007/s10803-006-0106-1
33. Inmaculada R, Hatem SM, Pedro M. Abnormal pressure pain, touch sensitivity, proprioception, and manual dexterity in children with autism spectrum disorders. *Neural Plasticity*. (2016) 2016:1723401. doi: 10.1155/2016/1723401
34. Demopoulos C, Brandes-Aitken AN, Desai SS, Hill SS, Antovich AD, Harris J, et al. Shared and divergent auditory and tactile processing in children with autism and children with sensory processing dysfunction relative to typically developing peers. *J Int Neuropsychol Soc*. (2015) 21:444–54. doi: 10.1017/S1355617715000387
35. Abu-Dahab SM, Skidmore ER, Holm MB, Rogers JC, & Minshew NJ. Motor and tactile-Perceptual skill differences between individuals with high-functioning autism and typically developing individuals ages 5-21. *J Aut Dev Disord*. (2013) 43:2241–8. doi: 10.1007/s10803-011-1439-y
36. Yang J, Ogasa T, Ohta Y, Abe K, Wu J. Decline of human tactile angle discrimination in patients with mild cognitive impairment and alzheimer’s disease. *J Alzheimers Dis*. (2010) 22:225–34. doi: 10.3233/JAD-2010-100723
37. Stevens JC, Patterson MQ. Dimensions of spatial acuity in the touch sense: changes over the life span. *Somatosens Res*. (1995) 12:29–47. doi: 10.3109/08990229509063140
38. Stevens JC, Choo KK. Spatial acuity of the body surface over the life span. *Somatosens Mot Res*. (1996) 13:153–66. doi: 10.3109/08990229609051403
39. Allen M, Dietz MJ. Anterior insula coordinates hierarchical processing of tactile mismatch responses. *Neuroimage*. (2016) 127:34–43. doi: 10.1016/j.neuroimage.2015.11.030
40. Reichenberg A, Weiser M, Rapp MA. Elaboration on premorbid intellectual performance in schizophrenia: premorbid intellectual decline and risk for schizophrenia. *Arch Gen Psychiatry*. (2005) 62:1297–1304. doi: 10.1001/archpsyc.62.12.1297
41. Psychiatric AA. *Diagnostic Criteria From DSM-IV*. Washington, DC: The American Psychiatric Association Publication (1994).
42. Lecrubier Y, Sheehan D V, Hergueta T, Weiller E. The mini-International neuropsychiatric interview(MINI). *Eur Psychiatry*. (1998) 13:9. doi: 10.1016/S0924-9338(99)80239-9
43. Sheehan DV, Lecrubier Y, Sheehan KH, Amorim P, and Dunbar GC. The mini-international neuropsychiatric interview (M.I.N.I.): the development and validation of a structured diagnostic psychiatric interview for dSM-IV and ICD-10. *J Clin Psychiatry*. (1998) 59:20–3. doi: 10.1037/t1859-7-000
44. Oldfield R C. The assessment and analysis of handedness: the edinburgh inventory. *Neuropsychologia*. (1971) 9:97–113. doi: 10.1016/0028-3932(71)90067-4
45. Gardner DM, Murphy AL, O’donnell H, Centorrino F, Baldessarini RJ. International consensus study of antipsychotic dosing. *Am J Psychiatry*. (2010) 167:686–93. doi: 10.1176/appi.ajp.2009.09060802
46. Kay SR, Fiszbein A, Opler LA. The positive and negative syndrome scale (PANSS) for schizophrenia. *Schizophr Bull*. (1987) 13:261–76. doi: 10.1093/schbul/13.2.261
47. Donald A, Jean A, Eleanor MT. Assessing depression in schizophrenia: the calgary depression scale. *Br J Psychiatry Suppl*. (1993) 163:39–44. doi: 10.1192/S0007125000292581
48. Ping Z, Lianqi L, Bin Z, Fujun J. Reliability and validity of calgary schizophrenia depression scale (Chinese version). *Chinese J Mental Health*. (2009) 23:638–42. doi: 10.3969/j.issn.1000-6729.2009.09.008
49. Spitzer RL KK, &Williams JB. Validation and utility of a self-report version of pRIME-MD: The pHQ primary care study. *JAMA*. (1999) 282:1737–44. doi: 10.1001/jama.282.18.1737
50. Spitzer RL, Kroenke K, Williams JB, Lwe B. A brief measure for assessing generalized anxiety disorder: the gAD-7. *Arch Intern Med*. (2006) 166:1092. doi: 10.1001/archinte.166.10.1092
51. Nuechterlein KH, Green MF, Kern RS, Baade LE, Barch DM, Cohen JD, et al. The mATRICES consensus cognitive battery, part 1: Test selection, reliability, and validity. *Am J Psychiatry*. (2008) 165:203–13. doi: 10.1176/appi.ajp.2007.07010042
52. Wu J, Yang J, Ogasa T. Raised-angle discrimination under passive finger movement. *Perception*. (2010) 39:993–1006. doi: 10.1068/p6264
53. Fassihi A, Akrami A, Esmaili V, Diamond ME. Tactile perception and working memory in rats and humans. *Proc Natl Acad Sci USA*. (2014) 111:2331–6. doi: 10.1073/pnas.1315171111
54. Blatow M, Nennig E, Durst A, Sartor K, Stippich C. fMRI reflects functional connectivity of human somatosensory cortex. *Neuroimage*. (2007) 37:927–36. doi: 10.1016/j.neuroimage.2007.05.038
55. Roland PE, O’Sullivan B, & Kawashima R. Shape and roughness activate different somatosensory areas in the human brain. *Proc Natl Acad Sci USA*. (1998) 95:3295–300. doi: 10.1073/pnas.95.6.3295
56. Kitada R, Kito T, Saito DN, Kochiyama T, Matsumura M, Sadato N, et al. Multisensory activation of the intraparietal area when classifying grating orientation: a Functional magnetic resonance imaging study. *J Neurosci*. (2006) 26:7491–501. doi: 10.1523/JNEUROSCI.0822-06.2006
57. Howes OD, Kambeitz J, Kim E, Stahl D, Kapur S. The nature of dopamine dysfunction in schizophrenia and what this means for treatment: Meta-analysis of imaging studies. *Arch Gen Psychiatry*. (2012) 69:776–86. doi: 10.1001/archgenpsychiatry.2012.169
58. Honea R, Crow TJ, Passingham D, Mackay CE. Regional deficits in brain volume in schizophrenia: a meta-analysis of voxel-based morphology studies. *Am J Psychiatry*. (2005) 162:2233–45. doi: 10.1176/appi.ajp.162.12.2233
59. Rapoport JL GJN, Gogtay N. Neurodevelopmental model of schizophrenia: update 2012. *Mol Psychiatry*. (2012) 17:1228–38. doi: 10.1038/mp.2012.23
60. Weinberger DR. Implications of normal brain development for the pathogenesis of schizophrenia. *Arch Gen Psychiatry*. (1987) 44:660–9. doi: 10.1001/archpsyc.1987.01800190080012
61. Silbereis J, Pochareddy S, Zhu Y, Li M, Sestan N. The cellular and molecular landscapes of the developing human central nervous system. *Neuron*. (2016) 89:248–68. doi: 10.1016/j.neuron.2015.12.008
62. Greenhill SD, de Haan AM, Fox K. Adult cortical plasticity depends on an early postnatal critical period. *Science*. (2015) 349:424–7. doi: 10.1126/science.aaa8481
63. Marin O. Developmental timing and critical windows for the treatment of psychiatric disorders. *Nat Med*. (2016) 22:1229–38. doi: 10.1038/nm.4225
64. Honma M, Koyama S, Osada Y. Double tactile sensations evoked by a single visual stimulus on a rubber hand. *Neurosci Res*. (2009) 65:307–11. doi: 10.1016/j.neures.2009.08.005
65. Ju Y. The tactile detection threshold changes when a visual stimulus is presented with a short temporal gap. *J Phys Ther Sci*. (2018) 30:92–5. doi: 10.1589/jpts.30.92
66. Dinse HR, Wilimzig C, Kalisch T. *Learning Effects in Haptic Perception. Human Haptic Perception: Basics and Applications*. Birkhäuser Basel (2008).
67. Sathian K, Zangaladze A. Tactile learning is task specific but transfers between fingers. *Percept Psychophys*. (1997) 59:119–28. doi: 10.3758/BF03206854

**Conflict of Interest:** The authors declare that the research was conducted in the absence of any commercial or financial relationships that could be construed as a potential conflict of interest.

Copyright © 2020 Liu, Fan, Zhao, Wang, Li, Wu, Yan and Tan. This is an open-access article distributed under the terms of the Creative Commons Attribution License (CC BY). The use, distribution or reproduction in other forums is permitted, provided the original author(s) and the copyright owner(s) are credited and that the original publication in this journal is cited, in accordance with accepted academic practice. No use, distribution or reproduction is permitted which does not comply with these terms.