

RESEARCH ARTICLE

Open Access



Efficacy of galcanezumab in patients with migraine who did not benefit from commonly prescribed preventive treatments

Dulanji K. Kuruppu^{1*}, Joshua Tobin², Yan Dong¹, Sheena K. Aurora³, Laura Yunes-Medina¹ and A. Laine Green⁴

Abstract

Background: Galcanezumab is a calcitonin gene-related peptide (CGRP) monoclonal antibody (mAb) indicated for the preventive treatment of migraine. While galcanezumab has demonstrated efficacy in patients who did not respond to prior preventive medications in general, its efficacy in patients who did not benefit from individual, commonly prescribed preventive treatments due to inadequate efficacy or safety/tolerability remains unknown.

Methods: CONQUER was a 3-month, randomized, double-blind, placebo-controlled, phase 3b study that enrolled patients with episodic or chronic migraine who had 2 to 4 migraine preventive medication category failures in the past 10 years. Patients were randomly assigned 1:1 to receive placebo ($N = 230$) or galcanezumab 120 mg/month (240 mg loading dose; $N = 232$). Post hoc analyses were conducted to determine the efficacy of galcanezumab in patients who had not benefited from six of the most commonly prescribed migraine preventive medications. The mean change from baseline in monthly migraine headache days and $\geq 50\%$ response rates were assessed over months 1–3. Improvement in Migraine-Specific Questionnaire Role Function-Restrictive (MSQ-RFR) scores were assessed at month 3. The endpoints were estimated via mixed model with repeated measures.

Results: The most common treatment failures due to inadequate efficacy or safety/tolerability, which at least 20% of patients reported trying without benefit, included topiramate, amitriptyline, propranolol, valproate or divalproex, onabotulinum toxin A, and metoprolol. Patients who had not previously benefited from these treatments had a greater mean reduction in monthly migraine headache days across months 1–3 in the galcanezumab group compared to placebo (all $p < 0.01$). More patients treated with galcanezumab experienced a $\geq 50\%$ reduction from baseline in monthly migraine headache days across months 1–3 compared to placebo (all $p < 0.05$). Galcanezumab-treated patients had a greater improvement in mean MSQ-RFR scores at month 3 compared to placebo (all $p < 0.01$).

(Continued on next page)

* Correspondence: kuruppu_dulanji@lilly.com

¹Eli Lilly and Company, Indianapolis, IN, USA

Full list of author information is available at the end of the article



© The Author(s). 2021 **Open Access** This article is licensed under a Creative Commons Attribution 4.0 International License, which permits use, sharing, adaptation, distribution and reproduction in any medium or format, as long as you give appropriate credit to the original author(s) and the source, provide a link to the Creative Commons licence, and indicate if changes were made. The images or other third party material in this article are included in the article's Creative Commons licence, unless indicated otherwise in a credit line to the material. If material is not included in the article's Creative Commons licence and your intended use is not permitted by statutory regulation or exceeds the permitted use, you will need to obtain permission directly from the copyright holder. To view a copy of this licence, visit <http://creativecommons.org/licenses/by/4.0/>. The Creative Commons Public Domain Dedication waiver (<http://creativecommons.org/publicdomain/zero/1.0/>) applies to the data made available in this article, unless otherwise stated in a credit line to the data.

(Continued from previous page)

Conclusions: In this population, galcanezumab was effective in reducing monthly migraine headache days, improving response rates, and enhancing quality of life in patients who had not previously benefited from topiramate, amitriptyline, propranolol, valproate or divalproex, onabotulinum toxin A, and/or metoprolol due to inadequate efficacy or safety/tolerability.

Trial registration: ClinicalTrials.gov [NCT03559257](https://clinicaltrials.gov/ct2/show/study/NCT03559257) (CONQUER).

Keywords: Galcanezumab, CGRP, Monoclonal antibody, Migraine, Fail preventive, Efficacy, Quality of life, CGRP mAb

Introduction

Migraine is a chronic neurologic disease characterized by moderate-to-severe headaches with associated symptoms including nausea, vomiting, photophobia, or phonophobia that can be disabling [1]. Patients who experience four or more migraine headache days per month with some degree of impairment should be offered a migraine preventive medication [2]. While 39% of patients with migraine qualify for prevention, only 13% of patients currently use one [2]. The most commonly prescribed migraine preventive medication classes are antiepileptics (e.g., topiramate), beta blockers (e.g., propranolol), and tricyclic antidepressants (e.g., amitriptyline), none of which were specifically developed for the preventive treatment of migraine [3, 4]. Many oral preventive therapies require a slow titration schedule and more than one-half of patients who receive a prescription migraine preventive medication discontinue its use within 6 months of initiation [5–7]. Previous studies that assessed adherence to migraine standard-of-care treatments found that 6 months after treatment initiation with antidepressants, antiepileptics, or beta blockers, 68–73% of patients were no longer taking these medications for migraine prevention [6].

In a cross-sectional study of US patients with migraine, 26.4% of patients with episodic migraine (EM) and 53.3% of patients with chronic migraine (CM) discontinued or switched their preventive treatment at least once. The main reasons for discontinuation/switching were inadequate efficacy and safety/tolerability [8]. Patients highlight efficacy and tolerability as the most important features of a preventive treatment; therefore, selecting a medication with these characteristics is crucial to ensuring optimal adherence [9, 10]. Persistence on migraine prophylaxis can, in turn, improve quality of life and patient outcomes [11–13].

Galcanezumab is a humanized monoclonal antibody (mAb) that selectively binds to calcitonin gene-related peptide (CGRP). The efficacy, safety, and tolerability of galcanezumab has been established for both EM and CM prevention [14–16]. However, these clinical trials excluded patients with a history of failure of three or more classes of migraine preventive treatments as defined by the American Academy of Neurology/American

Headache Society treatment guidelines Level (A) and (B) evidence [17]. The CONQUER study demonstrated galcanezumab's efficacy and safety in patients with EM and CM who had not benefited from 2 to 4 migraine preventive medication categories, with patients in the galcanezumab group experiencing 4.1 fewer monthly migraine headache days compared to 1.0 fewer in the placebo group from a baseline of 13.2 monthly migraine headache days [18]. This article assesses galcanezumab's efficacy in the CONQUER study subpopulation who did not benefit from individual, commonly prescribed, migraine preventive medications.

Methods

Study design

This study includes post hoc analyses from the CONQUER trial that assessed galcanezumab's efficacy in patients who had not benefited from 2 to 4 classes of migraine preventive treatments. A detailed description of the study design was reported previously [18]. Briefly, CONQUER (ClinicalTrials.gov registration number: NCT03559257; first posted date: 18/06/2018) was a phase 3b, multicenter (hospitals, clinics, or research centers in North America, Europe, and Asia), randomized, double-blind, placebo-controlled study. The trial included four study periods: (1) a 3–30 day screening period and washout of all preventive treatments; (2) a 1-month prospective baseline period; (3) a 3-month double-blind treatment period; and (4) a 3-month open-label treatment period. Participants were randomly assigned 1:1 to receive monthly subcutaneous injections of placebo or galcanezumab 120 mg following a loading dose of 240 mg. Randomization was done by a computer-generated random sequence and stratified by country and migraine frequency during the baseline period (low frequency EM, 4 to < 8 migraine headache days/month; high frequency EM, 8–14 migraine headache days/month and < 15 headache days/month; CM, ≥ 8 migraine headache days/month and ≥ 15 headache days/month). The study protocol was reviewed and approved by the appropriate institutional review board for each site and was conducted according to Good Clinical Practice and the Declaration of Helsinki guidelines.

Patients provided written informed consent prior to initiating the study.

Trial population

Participants were 18 to 75 years of age with a diagnosis of migraine as defined by International Classification of Headache Disorders – Third edition [1], a history of migraine for at least one year, and migraine onset prior to age 50. Eligible participants had to experience at least four migraine headache days and at least one headache-free day per month on average within the past 3 months. Patients were eligible if they had a history of documented failure of 2 to 4 migraine preventive medication categories in the past 10 years due to inadequate efficacy and/or tolerability. The medication categories included propranolol or metoprolol, topiramate, valproate or divalproex, amitriptyline, flunarizine, candesartan, botulinum toxin A or B (if taken for CM), and medications locally approved for prevention of migraine. Participants could continue the use of acute medications for migraine throughout the study. Patients with serious cardiovascular risk were not permitted to participate. The full list of inclusion and exclusion criteria was previously published [18].

Outcomes measured

The post hoc analyses assessed change from baseline in mean monthly migraine headache days across months 1–3, proportion of patients achieving a $\geq 50\%$ response rate across months 1–3, and mean Migraine-Specific Questionnaire Role Function-Restrictive (MSQ-RFR) at month 3 for patients who did not benefit from individual, commonly prescribed, migraine preventive medications. The MSQ-RFR domain assesses migraine's impact on patients' ability to perform daily activities. The MSQ items are rated on a scale of 1 to 6 and then converted to a scale of 0 to 100, with higher scores indicating an improvement in functioning [19]. The individual preventive medications selected for this analysis were those that 20% or more participants reported trying without adequate efficacy or tolerability. If patients did not benefit from or tolerate multiple medications, they could be assigned to more than one medication in this analysis. The efficacy of galcanezumab was further assessed for each prior migraine preventive based on failure due to (1) inadequate efficacy and (2) safety/tolerability.

Statistical analysis

Analyses were performed in patients with an individual medication failure due to lack of efficacy or safety/tolerability in the total intent-to-treat population, which included all patients who were randomly assigned and received at least one dose of study drug. Mean change from baseline in number of monthly

migraine headache days across months 1–3 and mean change in MSQ-RFR domain scores at month 3 were analyzed using a linear mixed model with repeated measures analysis. The model included treatment category, baseline migraine frequency category (low frequency EM, high frequency EM, and CM) [for MSQ-RFR outcome only], pooled country, month, and treatment-by-month interaction as well as baseline value and baseline value-by-month interaction. Baseline value referred to the baseline assessment for the analyzed outcome in the model. Proportion of patients achieving a $\geq 50\%$ response rate was assessed by a generalized linear mixed model with repeated measures. The model included fixed, categorical effects of treatment, month, and treatment-by-month interaction as well as baseline monthly migraine headache days. Unstructured covariance matrix was implemented in both linear and generalized linear mixed models to measure the correlation among repeated measures obtained on the same individuals. All statistical tests conducted were two-sided and p -values ≤ 0.05 were assumed to be statistically significant. No adjustments were made for multiple comparisons. Analyses were implemented using SAS Enterprise Guide 7.2 (SAS Institute, Cary, NC).

Results

Patient demographics and baseline disease characteristics

Patients were randomly assigned to placebo ($N = 230$) or galcanezumab 120 mg ($N = 232$). On average, patients were 46 years old, 86% were female, and 82% were Caucasian. Of the participants, 58% had EM and 42% had CM. The baseline number of monthly migraine headache days was 13.2, baseline MSQ-RFR score was 44.9, and patients averaged 3.5 preventive medication failures in their lifetime. These values were similar between treatment groups. The six most commonly failed migraine preventive medications in CONQUER, which at least 20% of patients reported trying without adequate efficacy or tolerability, were topiramate, amitriptyline, propranolol, valproate or divalproex, onabotulinum toxin A, and metoprolol. The baseline monthly migraine headache days, MSQ-RFR scores, number of prior preventive medication failures, and the number of patients who did not benefit from treatment due to inadequate efficacy or safety/tolerability for each of these preventive medications are presented in Table 1.

Reduction in monthly migraine headache days

Patients who had not previously benefited from the six most commonly failed preventive medications in CONQUER (topiramate, amitriptyline, propranolol, valproate or divalproex, onabotulinum toxin A, or

Table 1 Baseline disease characteristics by previous preventive medication treatment failure^a

Preventive medication	Number of monthly migraine headache days, mean (SD)		MSQ-RFR score, mean (SD)		Number of prior migraine preventive medications failed in lifetime, mean (SD)		Number of patients who did not benefit from treatment, n (%)	
	PBO	GMB 120 mg	PBO	GMB 120 mg	PBO	GMB 120 mg	due to inadequate efficacy ^b	due to safety/tolerability
Topiramate	13.1 (5.8)	13.5 (6.1)	42.4 (16.7)	43.9 (15.6)	3.6 (1.8)	3.7 (1.8)	270 (58.4)	95 (20.6)
Amitriptyline	13.4 (5.8)	14.3 (6.2)	43.8 (18.8)	45.5 (17.5)	3.7 (1.9)	3.9 (1.8)	215 (46.5)	69 (14.9)
Propranolol	14.4 (6.3)	14.4 (5.9)	44.3 (19.0)	44.0 (17.8)	4.3 (2.0)	4.1 (2.0)	135 (29.2)	26 (5.6)
Valproate or divalproex	12.6 (5.8)	13.2 (5.6)	46.7 (19.0)	49.1 (16.9)	3.8 (1.8)	3.8 (1.9)	123 (26.6)	39 (8.4)
Onabotulinum toxin A	15.9 (5.4)	16.5 (5.6)	40.3 (19.2)	42.2 (15.5)	4.8 (2.5)	4.3 (2.0)	94 (20.3)	1 (0.2)
Metoprolol	12.7 (5.3)	12.2 (5.8)	40.4 (18.0)	43.8 (14.9)	3.5 (1.5)	3.9 (1.8)	82 (17.7)	18 (3.9)

Abbreviations: GMB galcanezumab, MSQ-RFR Migraine-Specific Questionnaire Role Function-Restrictive domain, n number of patients within each specific category, PBO placebo, SD standard deviation

^aBased on patients who did not benefit from treatment due to inadequate efficacy or safety/tolerability

^bIncludes inadequate response and/or no response

metoprolol) and were assigned to galcanezumab had a greater mean reduction in monthly migraine headache days across months 1–3 compared to placebo (all $p < 0.01$; Table 2). The mean change difference between galcanezumab and placebo was at least 2.5 monthly migraine headache days, regardless of the previously failed migraine preventive medication. The largest mean change difference between galcanezumab and placebo was seen in patients previously treated with onabotulinum toxin A (-6.3 monthly migraine headache days in the galcanezumab group vs. -1.5 in placebo).

50% response rates

A greater proportion of patients treated with galcanezumab who previously did not benefit from the six most commonly failed preventive medications in CONQUER experienced a $\geq 50\%$ reduction relative to baseline in monthly migraine headache days across months 1–3 compared to placebo (all $p < 0.05$; Table 2). Patients who did not benefit from topiramate, amitriptyline, propranolol, or metoprolol were over two times more likely to achieve a $\geq 50\%$ response on galcanezumab compared to placebo. Patients who did not benefit from valproate/divalproex or onabotulinum toxin A were over three times more likely to achieve a $\geq 50\%$ response on galcanezumab compared to placebo.

MSQ-RFR domain scores

There was a significant improvement in quality of life as measured by MSQ-RFR at month 3 in galcanezumab-treated patients who previously had not benefited from the six most commonly failed preventive medications in CONQUER compared to placebo (all $p < 0.01$; Table 2). For each of these prior preventive medications, patients who received galcanezumab had at least a 10-point

greater increase in mean MSQ-RFR scores compared to patients who received placebo.

Reduction in monthly migraine headache days by failure due to inadequate efficacy and safety/tolerability

Treatment failure was more often due to inadequate efficacy than safety/tolerability, regardless of prior preventive (Table 1). The most commonly failed preventive medications due to inadequate efficacy were topiramate (58.4%), amitriptyline (46.5%), and propranolol (29.2%), while the most commonly failed preventive medications due to safety/tolerability were topiramate (20.6%), amitriptyline (14.9%), and valproate or divalproex (8.4%) (Table 1).

Galcanezumab-treated patients who experienced inadequate efficacy with topiramate, amitriptyline, propranolol, valproate or divalproex, onabotulinum toxin A, or metoprolol all had a significant reduction in overall mean monthly migraine headache days across months 1–3 compared to placebo (all $p < 0.01$; Fig. 1).

Galcanezumab-treated patients who did not tolerate topiramate, amitriptyline, or propranolol all had a significant reduction in overall mean monthly migraine headache days across months 1–3 compared to placebo (all $p < 0.05$; Fig. 2). Patients previously treated with valproate/divalproex or metoprolol experienced a larger numerical reduction in mean monthly migraine headache days with galcanezumab, but the reduction was not statistically significant, likely due to the small number of patients in these subgroups. Only one patient discontinued onabotulinum toxin A due to safety/tolerability reasons; therefore, no statistical analyses were performed. This patient was assigned to the galcanezumab group, had 8 monthly migraine headache days at baseline, and experienced an average

Table 2 Mean reduction in monthly migraine headache days, 50 % response rates, and improvement in MSQ-RFR scores among patients who did not benefit from individual preventive medications

Preventive medication	PBO	GMB 120 mg	p value
Topiramate			
LS mean change from baseline in monthly migraine headache days across months 1–3 (SE)	-1.0 (0.4)	-4.2 (0.4)	< 0.0001
≥ 50 % reduction in monthly migraine headache days across months 1–3, % (SE)	14.7 (2.2)	37.8 (3.0)	< 0.0001
LS mean change from baseline in MSQ-RFR at month 3 (SE)	+ 10.4 (1.9)	+ 22.5 (1.9)	< 0.0001
Amitriptyline			
LS mean change from baseline in monthly migraine headache days across months 1–3 (SE)	-1.2 (0.5)	-4.3 (0.5)	< 0.0001
≥ 50 % reduction in monthly migraine headache days across months 1–3, % (SE)	13.9 (2.4)	37.4 (3.3)	< 0.0001
LS mean change from baseline in MSQ-RFR at month 3 (SE)	+ 10.4 (2.0)	+ 23.6 (2.1)	< 0.0001
Propranolol			
LS mean change from baseline in monthly migraine headache days across months 1–3 (SE)	-1.7 (0.6)	-4.3 (0.6)	0.0005
≥ 50 % reduction in monthly migraine headache days across months 1–3, % (SE)	14.9 (3.3)	34.5 (4.3)	0.0008
LS mean change from baseline in MSQ-RFR at month 3 (SE)	+ 10.4 (2.8)	+ 22.9 (2.7)	0.0001
Valproate or divalproex			
LS mean change from baseline in monthly migraine headache days across months 1–3 (SE)	-0.4 (0.5)	-3.6 (0.5)	< 0.0001
≥ 50 % reduction in monthly migraine headache days across months 1–3, % (SE)	10.6 (3.1)	33.8 (4.7)	0.0002
LS mean change from baseline in MSQ-RFR at month 3 (SE)	+ 6.1 (2.2)	+ 17.0 (2.3)	< 0.0001
Onabotulinum toxin A			
LS mean change from baseline in monthly migraine headache days across months 1–3 (SE)	-1.5 (1.0)	-6.3 (0.9)	< 0.0001
≥ 50 % reduction in monthly migraine headache days across months 1–3, % (SE)	9.9 (3.9)	38.7 (5.7)	0.0008
LS mean change from baseline in MSQ-RFR at month 3 (SE)	+ 5.4 (5.4)	+ 24.0 (5.2)	< 0.0001
Metoprolol			
LS mean change from baseline in monthly migraine headache days across months 1–3 (SE)	-0.3 (0.9)	-3.0 (0.9)	0.0023
≥ 50 % reduction in monthly migraine headache days across months 1–3, % (SE)	14.7 (4.1)	33.1 (5.4)	0.0112
LS mean change from baseline in MSQ-RFR at month 3 (SE)	+ 5.8 (3.4)	+ 16.5 (3.4)	0.0025

Abbreviations: *GMB* galcanezumab, *LS* least-squares, *MSQ-RFR* Migraine-Specific Questionnaire Role Function-Restrictive domain, *PBO* placebo, *SE* standard error

reduction of 2 monthly migraine headache days over months 1–3.

Discussion

Prescribing a migraine preventive medication that is efficacious and well-tolerated has the potential to increase adherence, reduce multiple medication switches, and ultimately improve patient outcomes [8–10, 12]. Many oral standard-of-care treatments are borrowed from other disease states, have suboptimal efficacy and poor tolerability, and require long titration periods [3–5]. Galcanezumab specifically targets the underlying mechanism of migraine, effectively reduces migraine headache frequency, is well-tolerated, and does not require titration or laboratory monitoring [20].

Galcanezumab was effective in reducing mean monthly migraine headache days in patients who had not previously benefited from topiramate, amitriptyline, propranolol, valproate or divalproex, onabotulinum toxin A, and metoprolol due to lack of efficacy or safety/

tolerability. Efficacy was also demonstrated by a greater proportion of galcanezumab-treated patients with ≥ 50 % reduction in monthly migraine headache days compared to placebo. This threshold was used because it is widely considered to be clinically meaningful [21, 22].

Effect size tends to be larger when patients have failed multiple prior preventive medications. This is due to a low placebo response, likely because this patient population has lower expectations [18, 23, 24]. In this post hoc analysis, the effect size is largest in the group of patients who previously did not benefit from onabotulinum toxin A, most of whom experienced inadequate efficacy on this prior preventive. In this subgroup, patients treated with galcanezumab experienced 6.3 fewer mean monthly migraine headache days compared to 1.5 in placebo. These patients also achieved the largest 50 % response rate despite having the highest baseline monthly migraine headache days. This large effect size may be attributed to the greater number of prior preventive failures because patients often have to demonstrate inadequate response or intolerability to oral standard-of-care

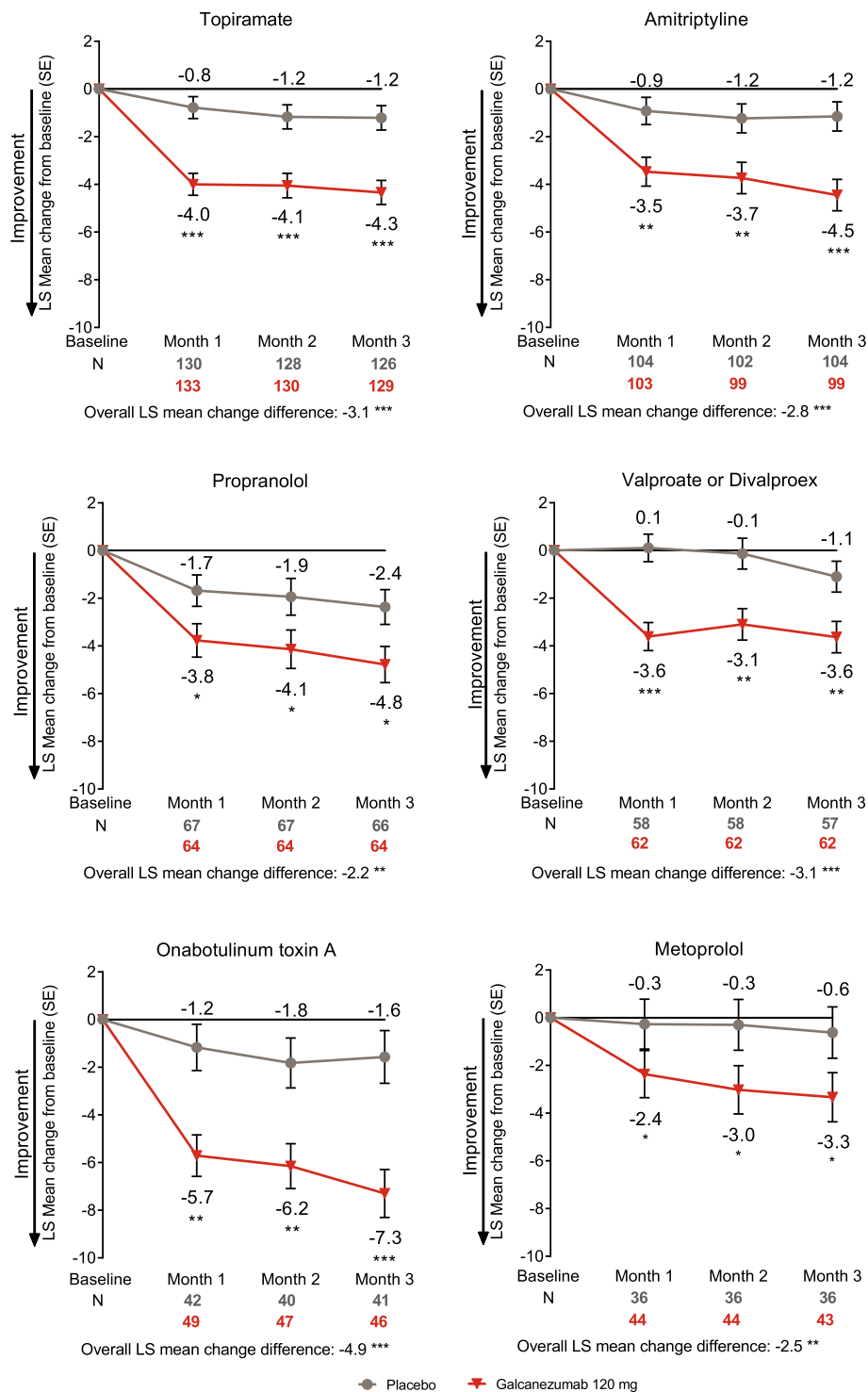


Fig. 1 LS mean change from baseline in the number of monthly migraine headache days in patients who did not benefit from migraine preventive medication due to inadequate efficacy. * $p < 0.05$, ** $p < 0.01$, *** $p < 0.0001$ vs placebo. Abbreviations: LS least-squares, N number of intent-to-treat patients, SE standard error

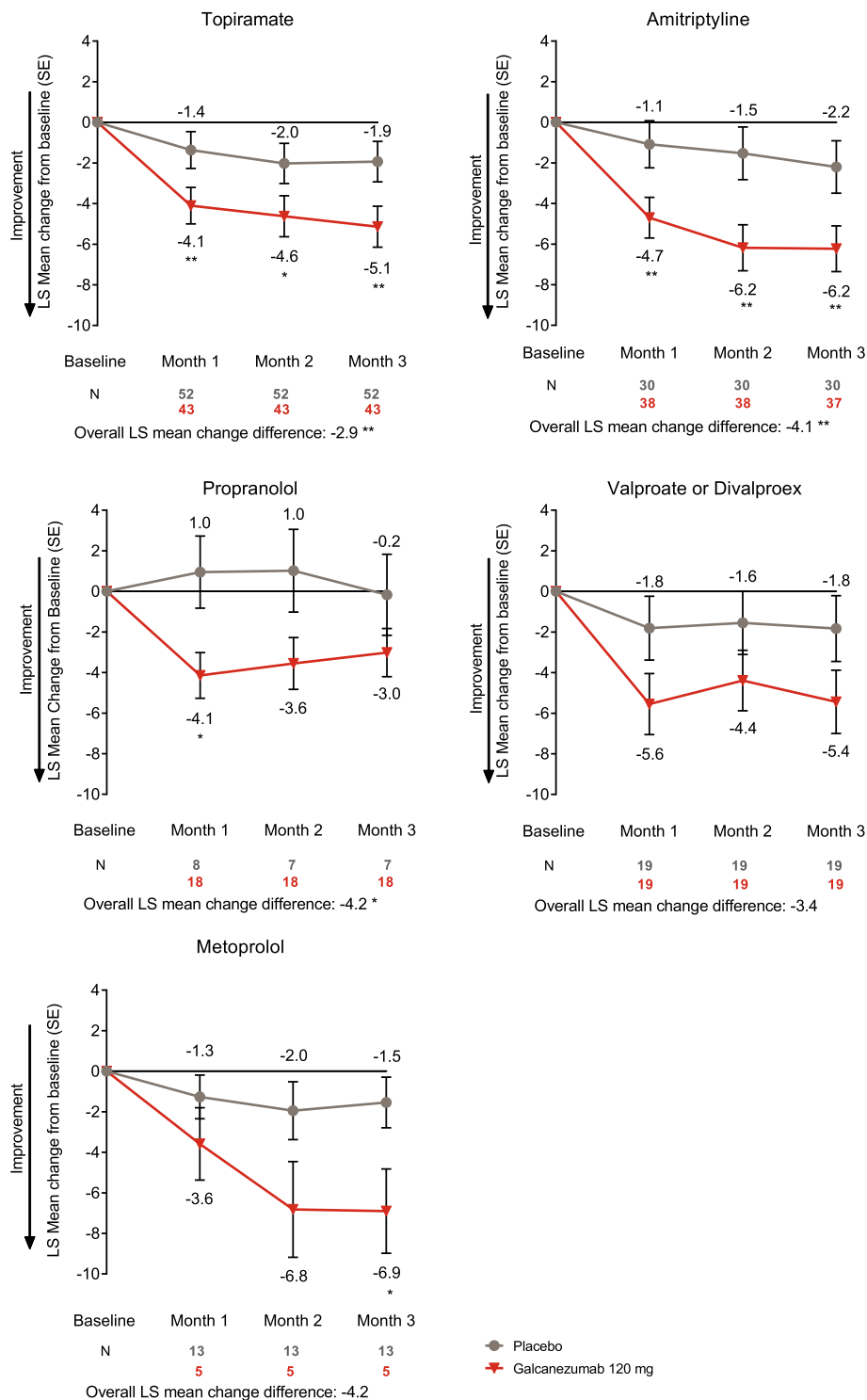


Fig. 2 LS mean change from baseline in the number of monthly migraine headache days in patients who did not benefit from migraine preventive medication due to safety or tolerability. * $p < 0.05$, ** $p < 0.01$ vs placebo. ^aOnly one patient discontinued onabotulinum toxin A due to safety/tolerability reasons; therefore, no statistical analyses were performed. Change from baseline showed a numerical reduction in monthly migraine headache days. Abbreviations: LS least-squares, N number of intent-to-treat patients, SE standard error

migraine preventive treatments in order to qualify for onabotulinum toxin A. These findings are consistent with a prior published post hoc analysis of patients treated with galcanezumab that had previous onabotulinum toxin A treatment failure [25], although the effect size in this analysis is even larger than previously reported.

The reduction in monthly migraine headache days with galcanezumab treatment was accompanied by an improvement in patients' quality of life as measured by the MSQ-RFR, which assesses the effect of migraine on daily social and work-related activities [19]. The minimal important difference for group-level analyses of MSQ-RFR is 3.2 [26]. Patients treated with galcanezumab experienced an increase in their mean score by at least 10 points compared to patients in the placebo group, regardless of previous preventive medication failure. Prior studies have shown that despite taking standard-of-care preventive therapy, 29.2% of patients with EM and 73.2% of patients with CM have moderate-to-severe headache-related disability, indicating ongoing burden of disease despite treatment [8]. Improvement in quality of life, as seen in MSQ-RFR scores with galcanezumab, demonstrate the potential to help relieve this burden and improve patients' lives.

The current American Headache Society guidelines state that patients should experience inadequate efficacy or intolerability of a six-week trial of at least two standard-of-care preventive treatments (and moderate disability in patients with 4–7 monthly headache days) before initiating a CGRP mAb [27]. Patients enrolled in this trial had an average of 3.5 prior preventive treatment failures in their lifetime and a baseline MSQ-RFR of approximately 45, which is indicative of poor quality of life. Starting galcanezumab earlier in a patient's course of treatment could reduce monthly migraine headache days and improve quality of life sooner, leading to reduced disability and improved patient outcomes.

Limitations of this study include the post hoc nature of these analyses. The study was not powered for the analyses presented in this manuscript. Patients who had treatment failure of more than four standard-of-care migraine preventive medication categories in the past 10 years and patients with serious or unstable medical conditions such as serious cardiovascular conditions were excluded from the study. Enrolled patients were primarily female, Caucasian, and middle-aged, which may limit generalizability of the results. The effect of galcanezumab on patients who did not benefit from certain prior preventive treatments due to intolerability may be limited by the small sample size. Further, the three-month duration of these post hoc analyses may not be long enough to demonstrate the full effect of treatment. Nonetheless, consistency of efficacy across multiple

outcome measures including migraine headache day reduction, response rates, and improvement in quality of life support the efficacy of galcanezumab in this difficult-to-treat patient population.

Conclusions

In this population, galcanezumab 120 mg monthly (with a 240 mg loading dose) was effective for patients who previously did not benefit from topiramate, amitriptyline, propranolol, valproate or divalproex, onabotulinum toxin A, and/or metoprolol. This efficacy was consistent whether it was measured by reduction in monthly migraine headache days, $\geq 50\%$ response rates, or improvement in quality of life based on MSQ-RFR. This analysis supports the clinical value of galcanezumab in patients who have tried, but not benefited from commonly prescribed migraine preventive medications.

Abbreviations

CGRP: Calcitonin gene-related peptide; CM: Chronic migraine; EM: Episodic migraine; GMB: Galcanezumab; LS: Least-squares; mAb: Monoclonal antibody; MSQ-RFR: Migraine-Specific Questionnaire Role Function-Restrictive; n: Number of patients within each specific category; N: Number of intent-to-treat patients; PBO: Placebo; SD: Standard deviation; SE: Standard error

Acknowledgements

The authors thank all the study participants, site investigators, and personnel involved in the CONQUER study. The authors thank Robert Nicholson, PhD, FAHS, and Mallik Rettiganti, PhD (Eli Lilly and Company) for review of final manuscript content.

Authors' contributions

DKK, YD, and LYM drafted the initial manuscript. DKK, JT, YD, SA, LYM, and ALG contributed to revising and editing the manuscript. The authors read and approved the final manuscript.

Funding

Eli Lilly and Company funded the studies in whole and its employees and assignees were involved in study design, data collection, data analysis, data interpretation, and writing of all related reports and publications. The corresponding author had full access to all study data and had final responsibility for the decision to submit for publication.

Availability of data and materials

Lilly provides access to all individual participant data collected during the trial, after anonymization, with the exception of pharmacokinetic or genetic data. Data are available to request 6 months after the indication studied has been approved in the United States and European Union and after primary publication acceptance, whichever is later. No expiration date of data requests is currently set once data are made available. Access is provided after a proposal has been approved by an independent review committee identified for this purpose and after receipt of a signed data sharing agreement. Data and documents, including the study protocol, statistical analysis plan, clinical study report, blank or annotated case report forms, will be provided in a secure data sharing environment. For details on submitting a request, see the instructions provided at www.vivli.org.

Declarations

Ethics approval and consent to participate

This study was reviewed and approved by appropriate institutional review boards and was conducted according to the Declaration of Helsinki. All participants gave written informed consent. The ethical review boards included Quorum Review, Inc., IRB Services, NRES Committee London – City and East, Egeszegugyi Tudományos Tanács, Bimetra -UZ Gent, CPP Tours - Région Centre (Ouest-1), Hospital Universitario La Fe de Valencia, Eticka

komise IKEM a Thomayerova nemocnice, Landesamt für Gesundheit und Soziales (LAGeSo), Isala Kliniken METC, Tatsuoka Neurology Clinic, Dr. Mano Medical Clinic, Nihonbashi Sakura Clinic, Sugiura Clinic Institutional Review Board, Oita Central Institutional Review Board, Tominaga Hospital, Dokkyo Medical University Hospital, Tokyo-Eki Center-Building Clinic, NPO Clinical research promotion network Japan IRB, Severance Hospital Yonsei University Health System, Nowon Eulji Medical Center, Eulji University, Seoul National University Hospital, and Kangbuk Samsung Hosp.

Consent for publication

Not applicable.

Competing interests

DKK, YD, and LYM are full-time employees of Eli Lilly and Company, and/or minor stockholders of the sponsor of the work, Eli Lilly and Company. JT has received compensation from Eli Lilly and Company for speaking and advisory board service, and indirect compensation for work related to clinical trials. SKA is an employee of Impel NeuroPharma. ALG has received compensation from Allergan Canada, Eli Lilly and Company, and Novartis.

Author details

¹Eli Lilly and Company, Indianapolis, IN, USA. ²Xenoscience, Phoenix, AZ, USA. ³Impel NeuroPharma, Seattle, WA, USA. ⁴Geisel School of Medicine at Dartmouth, Hanover, NH, USA.

Received: 29 January 2021 Accepted: 7 April 2021

Published online: 23 April 2021

References

- Headache Classification Committee of the International Headache Society (IHS). The International Classification of Headache Disorders, 3rd edition. *Cephalalgia*. 2018;38(1):1–211.
- Lipton RB, Bigal ME, Diamond M, Freitag F, Reed ML, Stewart WF, et al. Migraine prevalence, disease burden, and the need for preventive therapy. *Neurology*. 2007;68(5):343–349.
- Silberstein SD. Preventive Migraine Treatment. *Continuum (Minneapolis)*. 2015;21(4 Headache):973–989.
- Blumenfeld AM, Bloudek LM, Becker WJ, Buse DC, Varon SF, Maglante GA, et al. Patterns of use and reasons for discontinuation of prophylactic medications for episodic migraine and chronic migraine: results from the second international burden of migraine study (IBMS-II). *Headache*. 2013; 53(4):644–655.
- Loder E, Rizzoli P. Pharmacologic Prevention of Migraine: A Narrative Review of the State of the Art in 2018. *Headache*. 2018;58 Suppl 3:218–229.
- Berger A, Bloudek LM, Varon SF, Oster G. Adherence with migraine prophylaxis in clinical practice. *Pain Pract*. 2012;12(7):541–549.
- Hepp Z, Bloudek LM, Varon SF. Systematic review of migraine prophylaxis adherence and persistence. *J Manag Care Pharm*. 2014;20(1):22–33.
- Ford JH, Jackson J, Milligan G, Cotton S, Ahl J, Aurora SK. A Real-World Analysis of Migraine: A Cross-Sectional Study of Disease Burden and Treatment Patterns. *Headache*. 2017;57(10):1532–1544.
- Peres MF, Silberstein S, Moreira F, Corchs F, Vieira DS, Abraham N, et al. Patients' preference for migraine preventive therapy. *Headache*. 2007;47(4): 540–545.
- Mansfield C, Gebben DJ, Sutphin J, Tepper SJ, Schwedt TJ, Sapra S, et al. Patient preferences for preventive migraine treatments: A discrete-choice experiment. *Headache*. 2019;59(5):715–726.
- Bordini CA, Mariano da Silva H, Garbelini RP, Teixeira SO, Speciali JG. Effect of preventive treatment on health-related quality of life in episodic migraine. *J Headache Pain*. 2005;6(5):387–391.
- D'Amico D, Solari A, Usai S, Santoro P, Bernardoni P, Frediani F, et al. Improvement in quality of life and activity limitations in migraine patients after prophylaxis. A prospective longitudinal multicentre study. *Cephalalgia*. 2006;26(6):691–696.
- Diamond M, Dahlof C, Papadopoulos G, Neto W, Wu SC. Topiramate improves health-related quality of life when used to prevent migraine. *Headache*. 2005;45(8):1023–1030.
- Stauffer VL, Dodick DW, Zhang Q, Carter JN, Ailani J, Conley RR. Evaluation of Galcanezumab for the Prevention of Episodic Migraine: The EVOLVE-1 Randomized Clinical Trial. *JAMA Neurol*. 2018;75(9):1080–1088.
- Skljarevski V, Matharu M, Millen BA, Ossipov MH, Kim BK, Yang JY. Efficacy and safety of galcanezumab for the prevention of episodic migraine: Results of the EVOLVE-2 Phase 3 randomized controlled clinical trial. *Cephalalgia*. 2018;38(8):1442–1454.
- Detke HC, Goadsby PJ, Wang S, Friedman DI, Selzer KJ, Aurora SK. Galcanezumab in chronic migraine: The randomized, double-blind, placebo-controlled REGAIN study. *Neurology*. 2018;91(24):e2211–e2221.
- Silberstein SD, Holland S, Freitag F, Dodick DW, Argoff C, Ashman E, et al. Evidence-based guideline update: pharmacologic treatment for episodic migraine prevention in adults: report of the Quality Standards Subcommittee of the American Academy of Neurology and the American Headache Society. *Neurology*. 2012;78(17):1337–1345.
- Mulleners WM, Kim BK, Láinez MJA, Lanteri-Minet M, Pozo-Rosich P, Wang S, et al. Safety and efficacy of galcanezumab in patients for whom previous migraine preventive medication from two to four categories had failed (CONQUER): a multicentre, randomised, double-blind, placebo-controlled, phase 3b trial. *Lancet Neurology*. 2020;19:814–825.
- Jhingran P, Osterhaus JT, Miller DW, Lee JT, Kirchdoerfer L. Development and validation of the Migraine-Specific Quality of Life Questionnaire. *Headache*. 1998;38(4):295–302.
- Emgality (galcanezumab-gnlm) [package insert]. Indianapolis: Eli Lilly and Company; 2019.
- Diener HC, Tassorelli C, Dodick DW, Silberstein SD, Lipton RB, Ashina M, et al. Guidelines of the International Headache Society for controlled trials of preventive treatment of migraine attacks in episodic migraine in adults. *Cephalalgia*. 2020;40(10):1026–1044.
- Tassorelli C, Diener HC, Dodick DW, Silberstein SD, Lipton RB, Ashina M, et al. Guidelines of the International Headache Society for controlled trials of preventive treatment of chronic migraine in adults. *Cephalalgia*. 2018; 38(5):815–832.
- Reuter U, Goadsby PJ, Lanteri-Minet M, Wen S, Hours-Zesiger P, Ferrari MD, et al. Efficacy and tolerability of erenumab in patients with episodic migraine in whom two-to-four previous preventive treatments were unsuccessful: a randomised, double-blind, placebo-controlled, phase 3b study. *Lancet*. 2018;392(10161):2280–2287.
- Ferrari MD, Diener HC, Ning X, Galic M, Cohen JM, Yang R, et al. Fremezumab versus placebo for migraine prevention in patients with documented failure to up to four migraine preventive medication classes (FOCUS): a randomised, double-blind, placebo-controlled, phase 3b trial. *Lancet*. 2019;394(10203):1030–1040.
- Ailani J, Pearlman E, Zhang Q, Nagy AJ, Schuh K, Aurora SK. Positive response to galcanezumab following treatment failure to onabotulinumtoxinA in patients with migraine: post hoc analyses of three randomized double-blind studies. *Eur J Neurol*. 2020;27(3):542–549.
- Cole JC, Lin P, Rupnow MF. Minimal important differences in the Migraine-Specific Quality of Life Questionnaire (MSQ) version. *Cephalalgia*. 2009; 29(11):1180–1187.
- American Headache Society. The American Headache Society Position Statement On Integrating New Migraine Treatments Into Clinical Practice. *Headache*. 2019;59(1):1–18.

Publisher's Note

Springer Nature remains neutral with regard to jurisdictional claims in published maps and institutional affiliations.

Ready to submit your research? Choose BMC and benefit from:

- fast, convenient online submission
- thorough peer review by experienced researchers in your field
- rapid publication on acceptance
- support for research data, including large and complex data types
- gold Open Access which fosters wider collaboration and increased citations
- maximum visibility for your research: over 100M website views per year

At BMC, research is always in progress.

Learn more biomedcentral.com/submissions

