





## Article

# Towards the Preparation of a Hydrogel from Lyophilisates of the *Aloe arborescens* Aqueous Extract

Kamil Pawłowicz <sup>1,2</sup>, Magdalena Paczkowska-Walendowska <sup>1</sup>, Tomasz Osmalek <sup>3</sup>  
and Judyta Cielecka-Piontek <sup>1,\*</sup>

<sup>1</sup> Department of Pharmacognosy, Poznan University of Medical Sciences, Rokietnicka 3, 60-806 Poznan, Poland; kamil.pawlowicz@europlant-group.pl (K.P.); mpaczowska@ump.edu.pl (M.P.-W.)

<sup>2</sup> Phytopharm Kleka S.A., Kleka 1, 63-040 Nowe Miasto nad Warta, Poland

<sup>3</sup> Department of Pharmaceutical Technology, Faculty of Pharmacy, Poznan University of Medical Sciences, Grunwaldzka 6, 60-780 Poznan, Poland; tosmalek@ump.edu.pl

\* Correspondence: jpiontek@ump.edu.pl

**Abstract:** *Aloe* gel is a medicinal raw material with proven pharmacological activity. The health-promoting properties of other species of *Aloe* upon topical application prompted us to develop a formulation for the topical application of *A. arborescens* species. As a result of the gel preparation from the aqueous lyophilized extracts of three-year-old leaves of *A. arborescens*, no changes in the composition of the content of aloins A and aloenin A were found. The potential to neutralize free radicals was tested using DPPH and CUPRAC techniques, which confirmed the anti-radical activity of the lyophilisate. Screening of the inhibition of enzymes, the hyperactivity of which is associated with adverse changes in the skin of a pro-inflammatory nature, was performed. Importantly, using the PAMPA SKIN model, the possibility of the penetration of selected extract compounds (aloin A and aloenin A) through the skin was proven. Then, two formulations were prepared based on sodium alginate and hydroxypropyl methylcellulose (HPMC) and the hydrogels were characterized (rheological analysis, drug release profiles, permeability, and stability studies). HPMC-based hydrogel was the one with a targeted release of active substances and greater stability. *Aloe arborescens* hydrogel matrices seem to be a promising treatment strategy for inflammatory surface damage based on “green technology” at the stage of extract preparation and development of the drug form for topical application.

**Keywords:** *Aloe arborescens*; hydrogel; antioxidant activity; anti-hyaluronidase activity



**Citation:** Pawłowicz, K.; Paczkowska-Walendowska, M.; Osmalek, T.; Cielecka-Piontek, J. Towards the Preparation of a Hydrogel from Lyophilisates of the *Aloe arborescens* Aqueous Extract. *Pharmaceutics* **2022**, *14*, 1489. <https://doi.org/10.3390/pharmaceutics14071489>

Academic Editors: Giulia Auriemma and Tiziana Esposito

Received: 8 June 2022

Accepted: 15 July 2022

Published: 18 July 2022

**Publisher's Note:** MDPI stays neutral with regard to jurisdictional claims in published maps and institutional affiliations.



**Copyright:** © 2022 by the authors. Licensee MDPI, Basel, Switzerland. This article is an open access article distributed under the terms and conditions of the Creative Commons Attribution (CC BY) license (<https://creativecommons.org/licenses/by/4.0/>).

## 1. Introduction

Plant materials contain active compounds that may show synergistic action. There are many reports in the literature studying the possibility of plants causing pharmacological effects due to active compounds with different chemical structures, for example, the activity of the plant material from *Cannabis* sp. or *Calendula* sp. [1,2]. The critical step in obtaining the appropriate composition of compounds is their proper extraction. Organic solvents are still often used in its implementation. When obtaining a specific extraction efficiency, one should remember the consequences of their use, such as the possibility of their residues influencing living cells or environmental contamination related to their use [3,4].

Ecologically friendly extraction techniques include those with the use of water as the extraction factor [5,6] or the application of procedures that are safe for the natural environment, e.g., supercritical fluid extraction (SFE) [7,8]. The number of works reporting ecological extraction methods is constantly increasing. Srivastava and Gupta described the biological activity of aqueous extracts of chamomile flowers towards anti-proliferative and apoptotic activity in various human cancer cells [9]. The number of cases using supercritical extraction as a green technique to obtain extracts with a composition ensuring biological

activity is also increasing. Recently, an example of the use of SFE in getting extracts from medicinal cannabis has been reported [10].

One of the valued ingredients with a multi-pharmacological effect is the leaves of various species of *Aloe*. Aloe leaf gel is widely used in the pharmaceutical and cosmetic industries. The rationale is the composition of the active compounds. *Aloe* spp. contain almost 100 different compounds, including polysaccharides (e.g., acemannan, glucomannan), glycoproteins (e.g., aloctin), anthraquinones (e.g., aloin, emodin, aloenin), phenolic acids (e.g., salicylic acid), fatty acids (e.g., lupeol and campesterol), enzymes (e.g., amylase, catalase, and peroxidase), and others such vitamins and minerals [11,12]. It has been proven that the composition of these compounds can have anti-inflammatory and antiseptic properties and is therefore helpful in the healing of wounds and burns [12–14]. It is worth considering the exact mechanism by which aloe gel improves wound healing. Its therapeutic properties are linked to glucomannan, a molecule that affects fibroblast growth factor and boosts the activity and proliferation of these cells, resulting in increased collagen formation and secretion [15]. Aloe gel has also been found to not only increase the amount of collagen in wounds but also to affect collagen composition and cross-linking, promoting wound healing [16]. It also had significant stimulatory effects on cell proliferation and migration of both fibroblasts and keratinocytes [17]. According to clinical trials, aloe gel has also been used to prevent skin ulcers and cure burn wounds, surgical wounds, cracked nipples, genital herpes, psoriasis, and chronic wounds such as pressure ulcers [16,18].

When considering the possibility of topical and skin application of aloe extracts, it is worth paying attention to the pharmaceutical form of providing extracts in the form of hydrogels. Hydrogels appear to be one of the most promising classes of biomaterials due to their good physicochemical features, biocompatibility, and planned interaction with biological surroundings. They can be successfully used in the technology of highly controlled active substance release systems to the target site for a long period of time [19].

While the activity of other aloe species is well understood, there is still little information about the composition of the active compounds in *A. arborescens* and its biological activity. Therefore, our previous research has focused mainly on evaluating the performance of the *A. arborescens* garland. Leaves from control crops were used as the raw material for the tests. In the first phase of the research, we compared the composition of leaves obtained from one, two, three and four-year-old plants. Leaves obtained from three-year-old plants were indicated as the most worthwhile as they had the highest total phenolic concentration and total antioxidant activity [20]. For them, ethanol extracts were obtained, for which the safety of their use and effectiveness in relation to fibroblasts was also proven [21]. Bearing in mind the eco-friendly development of the Aloe leaf hydrogel, in this study, we have shown that aqueous extracts of *A. arborescens* allow for the obtention of biological activity, inhibiting enzymes whose overexpression promotes skin lesions. Additionally, the hydrogel has been proposed as a convenient and modern form of topical administration with a prolonged release of active substances and effective local action.

## 2. Materials and Methods

### 2.1. Plant Material

The leaves of three-year-old *Aloe arborescens* plants were obtained from plants from the controlled cultivation of Phytopharm Klęka S.A. (Nowe Miasto nad Wartą, Poland).

### 2.2. Chemicals and Reagents

Aloin A and Aloein A (phyproof<sup>®</sup> Reference Substance) were obtained from Sigma-Aldrich (Poznan, Poland), as well as all reagents for activity assays: (Sigma-Aldrich). 2,2-Diphenyl-1-picrylhydrazyl (DPPH), neocuproine, acetate buffer, copper(II) chloride ( $\text{CuCl}_2 \cdot \text{H}_2\text{O}$ ), kaempferol, sodium chloride, bovine serum albumin, hexadecyltrimethylammonium bromide (CTAB), hyaluronic acid (HA), hyaluronidase, sodium hydroxide, tyrosinase, L-DOPA, hydroquinone, Tris-HCl buffer, galantamine, acetylcholinesterase (AChE) and butyrylcholinesterase (BChE), 5,5-dithio-bis-(2-nitrobenzoic acid (DTNB), and

phosphate buffer. The hydration solution and acceptor Prisma™ buffer were obtained from Pion Inc. (Billerica, MA, USA), whereas HPLC grade methanol and water were obtained from Merck. High-quality pure water and ultra-high quality pure water were prepared using a Direct-Q 3 UV Merck Millipore purification system.

### 2.3. Preparation and Analysis of Aloe Gel Lyophilizate and Extract–Preformulation Studies

#### 2.3.1. Aloe Aqueous Gel Lyophilization and Extract Preparation

To obtain aloe gel in a stable form, the leaves were thoroughly washed and dried, then the base of the leaves was cut off and separated the inner part from the peel. Then, the aloe gel was frozen at  $-20\text{ }^{\circ}\text{C}$  and subjected to the lyophilization process (Heto PowerDry PL3000 Freeze Dryer, Thermo Scientific, Waltham, MA, USA) for 72 h under vacuum conditions at a temperature of about  $-55\text{ }^{\circ}\text{C}$ .

This obtained lyophilized aloe gel was rehydrated with water in the ratio 5:95 ( $w/v$ ) at the temperature  $40\text{ }^{\circ}\text{C}$  in an ultrasonic bath to a gel close to its fresh state to obtain water-soluble compounds.

#### 2.3.2. Determination of Active Compound Content

The concentrations of main active compounds (aloin A and aloenin A) were determined by using the HPLC-Diode-Array Detection method (equipment LC system, Dionex Thermoline Fisher Scientific) with Chromeleon software version 7.0) described previously [20]. Briefly, separations were performed on a LiChrospher RP-18 column,  $5\text{ }\mu\text{m}$  particle size,  $250\text{ mm} \times 4\text{ mm}$  LiChroCART® 250-4 (Merck, Darmstadt, Germany). The detection was performed using a diode array detector at a wavelength maximum ( $\lambda_{\text{max}}$ ) of 295 nm. The following mobile phase was composed of water (A) and methanol (B) with a gradient elution: 0–35 min, 35–95% B; 35–40 min, 95% B; 40–45 min, 35 B with a flow rate of the mobile phase set at 1.0 mL/min and the column temperature was maintained at  $30\text{ }^{\circ}\text{C}$ .

The presence of aloin A and aloenin A in the lyophilizate and extract was confirmed by comparison of the retention time and UV spectra of analyzed substances with their reference standards.

#### 2.3.3. Antioxidant Activity

##### Assay with 2,2-Diphenyl-1-picrylhydrazyl (DPPH)

The DPPH assay was conducted according to Paczkowska-Walendowska et al. [22].  $25\text{ }\mu\text{L}$  of water extracts at concentrations 4.17–66.67 mg plant material per mL were mixed with a  $175\text{ }\mu\text{L}$  of 0.2 mmol/L DPPH solution. The reaction mixture was shaken and incubated in the dark at room temperature for 30 min. Absorbance was measured at 517 nm against the blank ( $25\text{ }\mu\text{L}$  of water and  $175\text{ }\mu\text{L}$  of methanol). The control sample contained  $25\text{ }\mu\text{L}$  of water and  $175\text{ }\mu\text{L}$  of DPPH solution. Six replicates were performed for each assay. The percent of DPPH scavenging activity was calculated according to the following formula:

$$DPPH_{\text{scavenging activity}} (\%) = \frac{A_0 - A_1}{A_0} \times 100\%$$

where  $A_0$  is the absorbance of the control and  $A_1$  is the absorbance of the sample.

##### Cupric Reducing Antioxidant Capacity (CUPRAC) Assays

The CUPRAC assay was conducted according to Paczkowska-Walendowska et al. [22]. The solutions of the CUPRAC reagent included equal parts of 7.5 mM neocuproine solution in 96% ethanol, acetate buffer (pH = 7.0), and 10 mM copper (II) chloride solution. Briefly,  $50\text{ }\mu\text{L}$  of water extract was mixed with  $150\text{ }\mu\text{L}$  of CUPRAC solution, mixed, and incubated in the dark condition at room temperature for 30 min. Then, absorbance was measured at 450 nm against the control ( $50\text{ }\mu\text{L}$  of water and  $150\text{ }\mu\text{L}$  of CUPRAC reagent). The analysis was performed in six replicates. The results were expressed as the  $IC_{0.5}$ , which corresponds to the extract concentration required to obtain the absorbance value 0.5.

### 2.3.4. Anti-Hyaluronidase Activity

The inhibition of hyaluronidase was determined by a turbidimetric method described by Studzińska-Sroka et al. [23]. Twenty-five  $\mu\text{L}$  of hyaluronidase enzyme (30 U/mL of acetate buffer pH 7.0), 25  $\mu\text{L}$  of acetate buffer (50 mM, pH 7.0, with 77 mM NaCl and 1 mg/mL of bovine albumin), 15  $\mu\text{L}$  of acetate buffer (pH 4.5), and 10  $\mu\text{L}$  solutions of the gel were combined in order to produce reagent mixtures. All the reaction mixtures were incubated at 37 °C for 10 min. Next, 25  $\mu\text{L}$  of hyaluronic acid solution (HA; 0.3 mg/mL of acetate buffer pH 4.5) was added and incubated at 37 °C for 45 min. The undigested HA was precipitated with the addition of 200  $\mu\text{L}$  2.5% CTAB in 2% NaOH. The mixture was kept at room temperature for 10 min. Turbidity of the reaction mixture was measured as the absorbance at 600 nm (Multiskan GO 1510, Thermo Fisher Scientific, Vantaa, Finland). Kaempferol was used as the positive control (final concentration 0.5–1.0 mg/mL).

Also, five blank samples have been prepared:

- blank 1: enzyme and hyaluronic acid solution were replaced with acetate buffer (25.0  $\mu\text{L}$ ) and the test solution was replaced with the water (10.0  $\mu\text{L}$ ),
- blank 2: the enzyme solution was replaced with acetate buffer (25.0  $\mu\text{L}$ ) and the test solution was replaced with the water (10.0  $\mu\text{L}$ ),
- blank 3: the test solution was replaced with water (10, 0  $\mu\text{L}$ ),
- blank 4: hyaluronic acid solution replaced with acetate buffer (25.0  $\mu\text{L}$ ),
- blank 5: the enzyme solution was replaced with acetate buffer (25.0  $\mu\text{L}$ ).

The percentage of inhibition of hyaluronidase activity was determined according to the following equation:

$$I\% = \frac{(A_S - A_{B4}) - (A_{B3} - A_{B1})}{(A_{B5} - A_{B4}) - (A_{B3} - A_{B1})} \times 100\%$$

where  $I\%$  is the % inhibition of hyaluronidase,  $A_S$  is the absorbance of the sample,  $A_{B1}$  is the absorbance of blank 1,  $A_{B3}$  is the absorbance of blank 3,  $A_{B4}$  is the absorbance of blank 4, and  $A_{B5}$  is the absorbance of blank 5.

### 2.3.5. Anti-Tyrosinase Activity

Seventy-five  $\mu\text{L}$  of phosphate buffer (pH 6.8), 50  $\mu\text{L}$  of 192 U/mL tyrosinase solution, and 25  $\mu\text{L}$  of appropriate concentrations of the extract were combined in order to produce reagent mixtures. All the reaction mixtures were incubated at 37 °C for 10 min. Next, 25  $\mu\text{L}$  of HA (0.3 mg/mL of acetate buffer pH 4.5) was added and incubated at room temperature for 8 min. Then, 50  $\mu\text{L}$  of 2 mM/L L-DOPA solution was added to the mixture and incubated again at room temperature for 20 min. The absorbance was measured at 475 nm (Multiskan GO 1510, Thermo Fisher Scientific, Vantaa, Finland). Hydroquinone was used as the positive control (final concentration 5.0 mg/mL).

The tyrosinase inhibitory activity was calculated according to the formula below:

$$I\% = \left[ \frac{A_{PK} - A_{PB}}{A_{PK}} \right] \times 100\%$$

where  $I\%$  is the % inhibition of tyrosinase,  $A_{PK}$  is the control sample absorbance—control background absorbance,  $A_{PB}$  is the test sample absorbance – sample background absorbance.

### 2.3.6. Effect on Acetylcholinesterase (AChE) and Butyrylcholinesterase (BChE) Activity

In order to perform the analysis, the following were measured into each of the wells of the plate: 60  $\mu\text{L}$  of Tris-HCl buffer (0.05 M/L), then 5  $\mu\text{L}$  of galantamine solution or test extract of the appropriate concentration and 30  $\mu\text{L}$  of AChE or BChE enzyme solution (0.2 U/mL) were added to the test samples and incubated for 5 min at room temperature. Then, 30  $\mu\text{L}$  of ATCI or BTCl solution (1.5 mM/L) and 125  $\mu\text{L}$  of DTNB solution (0.3 mM/L) were added to each well and the plate was incubated for 20 min for AChE or 30 min for BChE at room temperature. The absorbance measurement at 405 nm. In the blank for the

test samples, the enzyme solution was replaced with a buffer; in the control, the medium used for the extraction was used instead of the test solution; in the blank for the control, in addition to changing the extract to a pure medium, the enzyme was replaced with an appropriate volume of the buffer. The result was calculated according to the formula:

$$\text{enzyme inhibition (\%)} = 100 - \frac{(A_S - A_{SB}) \times 100}{A_C - A_{CB}}$$

where  $A_S$  is the absorbance of the sample,  $A_{SB}$  is the absorbance of the sample's blank,  $A_C$  is the absorbance of the control, and  $A_{CB}$  is the absorbance of the control's blank.

### 2.3.7. Permeability Assay

Permeability of aloe gel active compounds through artificial biological membranes was investigated by using the PAMPA™ (skin parallel artificial membrane permeability assay) SKIN assays (Pion Inc.) as received by the manufacturer, without further evaluation of the membrane permeability. In brief, the PAMPA™ model consists of a two-chamber PAMPA™ sandwich composed of two 96-well plates, with donor on the bottom plate and acceptor on top plate. In the case of the Skin model, before use, pre-coated Skin PAMPA™ sandwich plates were hydrated overnight by placing 200 µL of the hydration solution in each well (Hydration Solution, Pion Inc.). Standards (aloein A and aloin A) were dissolved in donor solutions. The acceptor plates were loaded with an acceptor Prisma buffer with pH 7.4. The plates were put together and incubated under the following conditions: temperature of 32 °C for 5 h with continuous stirring at 60 rpm. Each experiment was repeated at least three times. The amount of permeated active compounds was determined using the HPLC method.

The apparent permeability coefficients ( $P_{app}$ ) were calculated from the following equation:

$$P_{app} = \frac{-\ln\left(1 - \frac{C_A}{C_{equilibrium}}\right)}{S \times \left(\frac{1}{V_D} + \frac{1}{V_A}\right) \times t}$$

where  $V_D$  is the donor volume,  $V_A$  is the acceptor volume,  $C_{equilibrium}$  is the equilibrium concentration  $C_{equilibrium} = \frac{C_D \times V_D + C_A \times V_A}{V_D + V_A}$ ,  $C_D$  is the donor concentration,  $C_A$  is the acceptor concentration,  $S$  is the membrane area, and  $t$  is the incubation time (in seconds).

### 2.4. Formulation Studies

For hydrogel formulations, the following composition was proposed (Table 1).

**Table 1.** Chemical composition of hydrogels.

	Formulation 1 (F1)	Formulation 2 (F2)
Lyophilized aloe gel	1.50 g (3%)	1.50 g (3%)
Hyaluronic acid	0.75 g (1.5%)	0.75 g (1.5%)
Sodium alginate	1.50 g (3%)	-
Hydroxypropyl methylcellulose (HPMC)	-	1.00 g (2%)
Water	up to 50.00 g	up to 50.00 g

To obtain a hydrogel, sodium alginate or HPMC was added to the distilled water and stirred for 1 h with a magnetic stirrer, maintaining the temperature at 40 °C or 65 °C, respectively. After this time, the heat was turned off and hyaluronic acid was added and stirred for another hour. Finally, lyophilized aloe gel was added and mixed again for 1 h.



#### 2.4.1. Rheological Analysis

Examination of the rheological properties of formulation 1 and formulation 2 was performed at a temperature of  $32.0 \pm 0.5$  °C with the use of HAAKE™ RheoStress1 (Thermo Scientific Corp., Waltham, MA, USA) rotational rheometer equipped with parallel plate geometry (PP35Ti; diameter: 35 mm, gap size: 1 mm).

In flow behavior studies, the investigated samples were subjected to shearing at controlled rate (CR) and controlled stress (CS) modes. In CR mode, the shear rate increased from 1.0 to 200.0 1/s in 100 s. In CS mode, the shear stress value increased from 1.0 to 200.0 Pa in 100 s.

In the oscillatory stress sweeping assay, the samples were subjected to the increasing oscillatory stress in the values from 1.0 to 50.0 Pa under a constant frequency of 1 Hz. Storage ( $G'$ ) and loss ( $G''$ ) moduli were plotted as a function of oscillatory stress.

#### 2.4.2. Drug Release Profiles

The in vitro release experiments were performed for the formulation 1 and 2 with the use of vertical Franz diffusion cells (SES GmbH–Analysesysteme, V6A-02 model), each containing 8 mL of acceptor solution (phosphate buffer; pH = 7.4). The cells were equipped with regenerated cellulose membranes (Visking® dialysis tubing, SERVA Electrophoresis GmbH, Heidelberg, Germany) with pore diameter ca. 25 Å. Gel samples (1.0 mL) were placed at the donor compartment and spread evenly on the surface of the artificial membrane (immersed in the acceptor fluid at  $32.0 \pm 0.5$  °C for 24 h before the experiment). Each gel sample (1.0 mL) contains 0.04 mg of aloin A and 0.03 mg of aloenin A. The solubility of aloin A is 1 mg/mL while aloenin A is freely soluble in the water; therefore, sink conditions were retained. The effective diffusion area of the employed cells was 0.999 cm<sup>2</sup>. The temperature of the receptor fluid was set at  $32.0 \pm 0.5$  °C. The samples (1.0 mL) were taken from the acceptor compartment after every hour, up to 6 h, and replaced immediately with an equal volume of fresh acceptor fluid. The concentrations of active compounds in the collected samples were determined with the UHPLC-DAD method described above.

#### 2.4.3. Biological Assays

Antioxidant activity using DPPH assay was performed according to Section 2.3.3.

Anti-hyaluronidase and anti-tyrosinase activities of formulation 1 and 2 were also tested. An appropriate volume of formulations 1 and 2 was added to the reagent mixture and thoroughly dispersed according to Sections 2.3.4 and 2.3.5. The percentage of inhibition was converted to the content of the lyophilized aqueous gel to make the results comparable.

A permeability test was performed according to Section 2.3.7. Formulation 1 and 2 were dispersed in donor solution. The other conditions were as described above.

#### 2.4.4. Stability Test

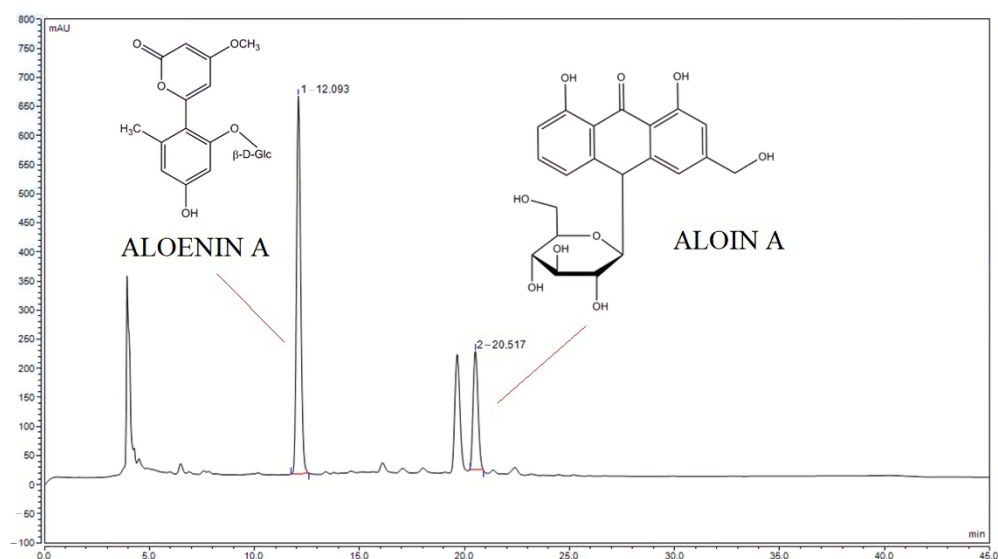
Both original lyophilized aloe aqueous gel (semi-product) as well as formulations 1 and 2 have undergone stability testing. The samples were placed in a stability chamber with intermediate conditions (temperature:  $30 \pm 2$  °C, humidity:  $65 \pm 5\%$  RH). The content of active ingredients was assessed at the time points 0, 10, and 20 days by using the HPLC method.

#### 2.5. Statistical Analysis

Statistical analysis was carried out with Statistica 13.3 software (Cracow, Poland). The normality of the results was checked using the Shapiro–Wilk test. The differences among the mean values were tested using the ANOVA test with post hoc Tukey's range test for multiple comparisons (when comparing three or more groups, e.g., in the case of biological activity of extracts) or using the Student's *t*-test (when comparing two groups, e.g., in the case of permeability assay of formulations). Differences between groups were considered to be significant at  $p < 0.05$ .

### 3. Results and Discussion

The literature reports on the biological properties of alcoholic aloe extracts [20]. Rather than helping wounds heal, alcohol can cause pain and irritation and slow down the healing process, so, unfortunately, the use of alcoholic extracts in the treatment of hard-to-heal wounds may be limited [24]. Therefore, the aim was to prepare water extracts and assess their biological activity profile. To prepare the extracts, three-year-old leaves were used because in our earlier study, it was shown that they have the highest content of active compounds with the most potent antioxidant properties [20]. In order to assess the qualitative and quantitative composition, the previously developed HPLC method was used, in which the content of aloin A and aloenin A was evaluated (Figure 1) [20]. Identification of the additional peaks was not possible due to limited access to the analytical standards. Aloin A and aloenin A contents were 1.49 mg and 1.19 mg per 1 g of lyophilizate, respectively.



**Figure 1.** The HPLC chromatogram of lyophilized aloe gel with selected patterns of aloenin A and aloin A.

The next stage of the research was to evaluate the properties of the prepared aqueous aloe extract. The DPPH and CUPRAC methods were used in the assessment of antioxidant properties (Table 2). It was shown that the prepared extract is even more active than the alcoholic extract, with  $IC_{50} = 22$  vs.  $37$  mg/mL for water and alcoholic extract for CUPRAC assay, respectively [20]. The antioxidant activity does not only result from the presence of polyphenolic compounds; hence, a synergy between the action of polyphenols and anthranoid compounds can be suggested. This is confirmed by the previously obtained test results, where rind extracts, much richer in anthranoid compounds, show higher antioxidant activity [25].

**Table 2.** The antioxidant effect of water extracts of lyophilized aloe gel.

	DPPH $IC_{50}$ [mg/mL]	CUPRAC $IC_{0.5}$ [mg/mL]
Water extract of lyophilized aloe gel	$35.50 \pm 0.57$	$22.35 \pm 0.35$

When considering the use of aloe arborescence extract in the treatment of hard-to-heal wounds, an anti-inflammatory effect is also a critical property. For this purpose, the ability of the extract to inhibit the hyaluronidase enzyme was assessed. The presence of hyaluronic acid supports and accelerates the healing process of both superficial and deep wounds of various origins, resulting in faster wound healing, while hyaluronidase is an enzyme that

catalyzes the degradation of hyaluronic acid [26]. Therefore, the hyaluronidase inhibitory properties of aloe gel water extract were assessed (Table 3). The hyaluronidase inhibition by *A. arborescens* extract is lower (7.03% at a concentration of 66.67 mg/mL, Table 3) than that of the other varieties: *A. camperi*—771.78 µg/mL, *A. percrassa* latex—664.47 µg/mL [27], and *A. arborescens* ethanol extract—660.00 µg/mL [21]. The effect of the prepared lyophilized gel was weaker than the positive control, kaempferol (IC<sub>50</sub> = 713 µg/mL). Such a significant difference in activity may result from the method of obtaining the extract; in the above, the extraction mixture was ethanol or ethanol-water (7:3 v/v), while in this test, it was water. It is believed that the inhibition of skin-related enzymes (hyaluronidases, but also elastase, collagenase, and tyrosinase), which mainly act as spreading agents that reduce the tension in the connective tissue, is a crucial strategy for good skin integrity and wound healing [28]. While there are no direct literature reports on the effect of aloin on hyaluronidase, there is information about its anti-collagenase activity [29]. It can be supposed that aloin will also be responsible for the anti-hyaluronidase activity of the said extracts. It is aloin that is one of the compounds that determine the anti-inflammatory effect of the plant material, probably through the blocking of iNOS and COX-2 mRNA expression [30]. Furthermore, deregulation of hyaluronic acid metabolism is one of the features of diabetes mellitus, where the leading cause of this phenomenon is elevated glucose levels. This phenomenon is the cause of poor wound healing and many of its complications observed in diabetics [31]. Therefore, it can be concluded that aloe extract, which is characterized by high hyaluronidase-inhibiting properties, may become a promising treatment strategy for these wounds.

**Table 3.** Inhibition of hyaluronidase and tyrosinase activity.

	% Inhibition of Hyaluronidase	% Inhibition of Tyrosinase
Water extract of lyophilized aloe gel at concentration 66.67 mg/mL	7.03 ± 0.43	14.43 ± 1.03

On the other hand, tyrosinase is an enzyme that plays a role in the formation of pigments such as melanin. Overactivity of the tyrosinase enzyme leads to hyperpigmentation and is associated with aging [32]. Therefore, its inhibitors can be attractive skin-lightening agents [33] and they can be used in wound and scar treatment. Therefore, the anti-tyrosinase activity of water aloe gel extracts was also assessed (Table 3). Interestingly, aloe gel extract at a concentration of 66.67 mg/mL inhibits tyrosinase by 14.43% (Table 3) and the extract described in the literature at a concentration of 600 µg/mL does not, so the effect is dose dependent. The effect is weaker than the positive control, hydroquinone (42% at a concentration 5 mg/mL). Whereas Gupta et al. showed that methanolic extracts at a concentration of 6 mg/mL inhibits tyrosinase by 41.18% [34]; thus, a significant influence of the extraction solvent on the activity is apparent. Another study conducted by Jones et al. showed that aloesin, another anthranoid compound isolated from the Aloe plant, modulates melanogenesis by competitive inhibition of tyrosinase at the site of dihydroxyphenylalanine oxidation, inhibiting melanin synthesis in vitro, and its action is dose dependent [35,36].

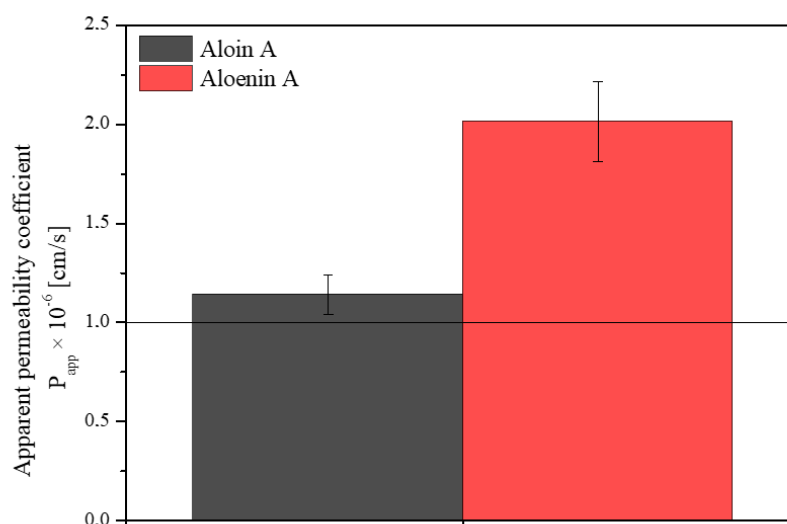
When considering the use of aloe gel extract in patients with diabetes, it is worth noting that acetylcholinesterase deficiency contributes to neuromuscular junction dysfunction in diabetic neuropathy [37]. Therefore the influence of the prepared extract on AChE and BChE activity was also examined (Table 4). Some activity was shown against both enzymes; however, it is several hundred times weaker than the standard, whereas in the case of peripheral neuropathies, preservation of enzyme activity is indicated. The inhibitory activity of ethanol extracts is much higher [38], which proves the suitability of using water extracts as indicated in this study.



**Table 4.** Inhibition of AChE and BChE activity.

	AChE Inhibition IC <sub>50</sub> [mg/mL]	BChE Inhibition IC <sub>50</sub> [mg/mL]
Water extract of lyophilized aloe gel	265.37 ± 1.87	120.87 ± 2.37
Galantamine	0.02 ± 0.01	0.13 ± 0.01

Knowing the health-promoting properties of the aloe gel water extract, it is worth considering whether its action is limited only to the surface effect or whether the active compounds can penetrate the skin barrier. The PAMPA-SKIN model was used to predict the transdermal penetration of compounds (aloin A and aloenin A). Figure 2 shows the apparent permeability coefficients for active ingredients. Both in the case of aloin A and aloenin A,  $P_{app} > 1$  cm/s was obtained, which proves a high passive permeability through the skin barrier. However, aloin has been shown to be photocytotoxic when absorbed at a dose of 500  $\mu$ M and irradiated with UV light, so a topical application must be limited to the skin surface or at a dose of 500  $\mu$ M and irradiated with UV light and/or exposure to UV light should be avoided [39,40]. It is worth bearing in mind that the design of a pharmaceutical form should limit aloin's absorption and allow it to show its action on the skin surface. Otherwise, due to a matter of safeness, an additional purification step should be added to the methodology to remove the aloin.

**Figure 2.** Apparent permeability coefficients for aloin A (black) and aloenin A (red) from lyophilized aloe gel using the SKIN model.

Many properties of the aqueous extract of aloe gel have been demonstrated, such as antioxidant, anti-hyaluronidase, and anti-tyrosinase effects, as well as an effect on cholinesterases. All these properties lead to the possibility of using the extract in the treatment of hard-to-heal diabetic wounds. It is essential to formulate an appropriate pharmaceutical form that, on the one hand, ensures the stability of the product and, on the other hand, limits the absorption of aloin, as described above. Therefore, the second part of the work aimed to create a semi-solid pharmaceutical form in the hydrogel form with the targeted release of active compounds. Hydrogels have been chosen as the pharmaceutical dosage form with the controlled release of active ingredients. Because of their ability to cleanse the wound by absorbing exudate as well as impurities, maintain the wound surface wet, and regulate the entry of water vapor and oxygen, hydrogels are regarded as good topical solutions for the treatment of chronic wounds [41]. Sodium alginate (formulation 1) and hydroxypropyl methylcellulose (HPMC) (formulation 2) were proposed as the base for hydrogels (Table 1). Alginate hydrogels offer exceptional features, such as a high water content, nontoxicity, soft consistency, biocompatibility, and biodegradability, making them

ideal candidates for drug delivery [42]. Alginates are already described as an aloe vera gel carrier, where the possibility of diffusing the aloe vera gel by dissolving the film into the wound bed during swelling or when stimulating the healing process is indicated [43]. Meanwhile, HPMC was selected as a widely used cellulose derivative in controlled release products due to its thickening, gelling, and swelling properties [44], and it has also already been described as an aloe gel vehicle [45,46].

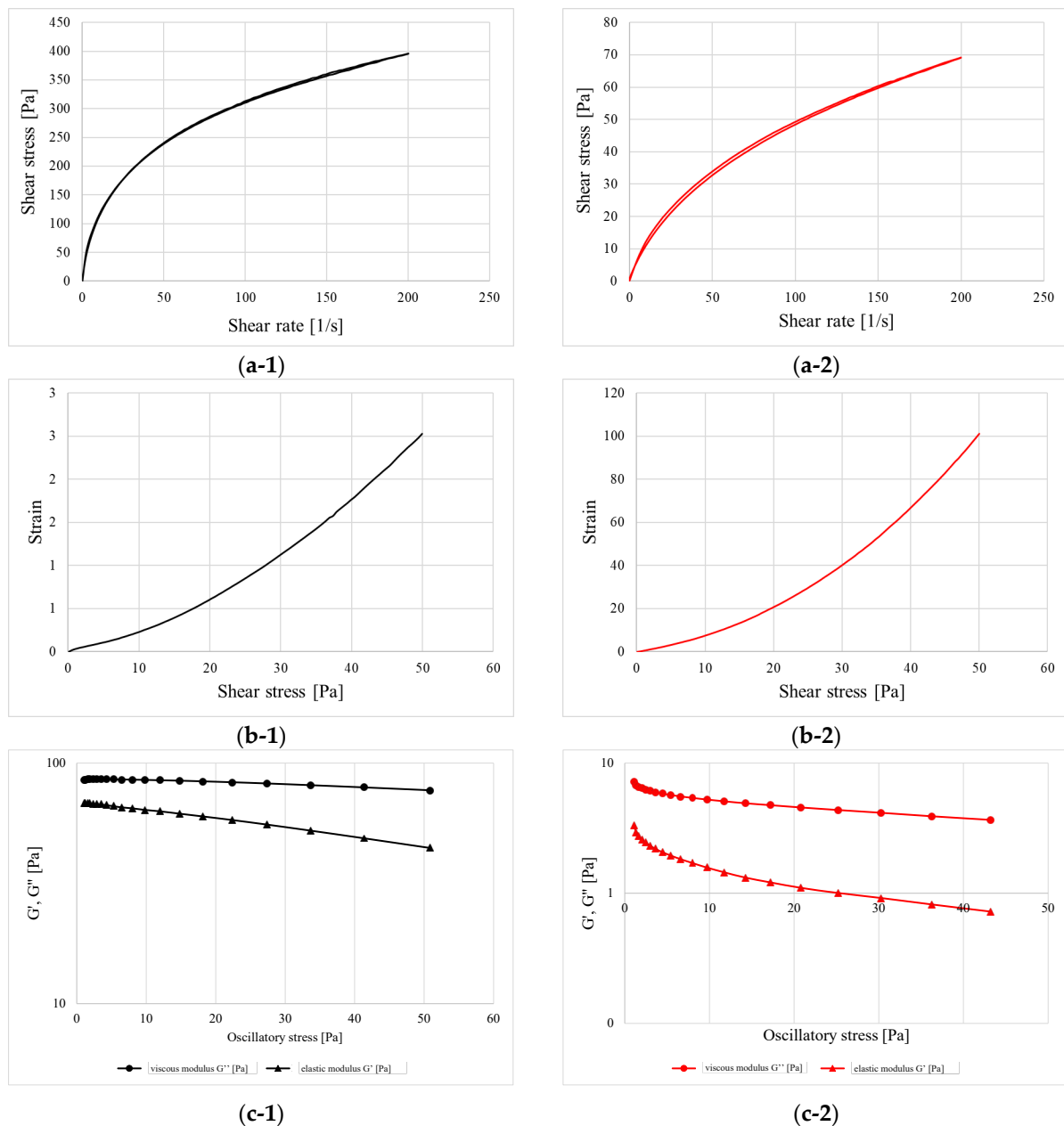
Fresh-prepared alginate- and HPMC-based hydrogels have undergone rheological tests, divided into two parts: steady shear and oscillatory shear measurements (Figure 3). As can be observed in Figure 3(a-1,a-2), the shape of the flow curves indicated that both formulations revealed the shear-thinning properties with the loss of viscosity upon increasing the shear rate, which is typical for most polymer-based hydrogels and viscous liquids. From the values of shear stress reached at the maximum shearing rate, it can be concluded that the addition of sodium alginate contributed to the stiffening of the structure by more than five-fold when compared to the HPMC. The curves showed the best fitting to Ostwald–de Waele model, depicted by the equation:  $\tau = K \cdot n$ , where  $n$  is a power-law index [47]. Its value corresponds to the fluidity degree of a given material and represents the departure from Newtonian behavior ( $n = 1$ ). When  $n$  reaches values beyond unity, the material starts thinning upon the applied shearing force and when it exceeds the value of unity, the material starts shear thickening and reacts to the viscosity increase. In the first case, the lower the  $n$  value, the higher the deviation from Newtonian flow [48]. The  $K$  parameter, in turn, is described as the consistency coefficient and is equal to the shear stress at a shear rate of  $1.0 \text{ s}^{-1}$ . As presented in Table 5, the consistency of the alginate-based sample turned out to be more than ten times greater than the HPMC-containing sample. This is the effect of both a higher polymer concentration but also the interaction of functional groups with the ions present in the formulation and the formation of cross-links. In this aspect, the HPMC is not capable of creating this type of connection, and the way of reacting to the applied force depends to the greatest extent on the concentration and the degree of chain entanglement [49].

**Table 5.** The calculated rheological parameters from the course of the flow-curves.

	Ostwald–de Waele			Thixotropy
	Power Law Index ( $n$ )	Consistency ( $K$ ) [Pa·s <sup><math>n</math></sup> ]	Correlation Coefficient	
Formulation 1	0.384 ± 0.005	51.92 ± 1.97	0.9979	165.75 ± 1.20
Formulation 2	0.533 ± 0.006	4.20 ± 0.00	0.9989	180.80 ± 5.94

The overlapping of the up- and down ramps on the plots a-1 and a-2, as well as data from Table 5, clearly shows that the thixotropy of both gels was negligible and the structure, after being disrupted, rebuilds almost instantly. According to the CS mode measurements (Figure 3(b-1,b-2)), it can be stated that the samples possessed no apparent yield point, which can be concluded from the fact that even when applying the minimum amount of force, the formulations already began to deform and flow without putting up any significant resistance [50].

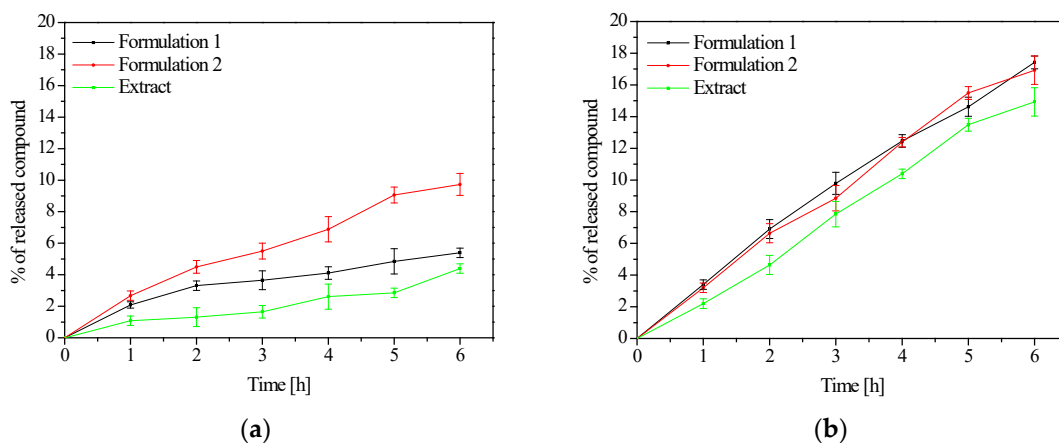
Figure 3(c-1,c-2) represent the behavior of samples upon increasing oscillatory stress. In both cases, the value of the viscosity modulus being higher than the elasticity modulus indicate that the samples do not contain a distinct three-dimensional polymer network and the structure is the result of a mutual entanglement of individual chains and other components. Therefore, the tested systems exhibit the characteristics of viscous liquids without a rigid internal structure.



**Figure 3.** Flow curves obtained in controlled rate (CR) mode (a-1,a-2), flow curves obtained in controlled stress (CS) mode (b-1,b-2) and the oscillatory stress sweeping (c-1,c-2) for formulation 1 (black) and 2 (red).

When analyzing the dissolution profiles of aloin, it was noted that its behavior changed depending on the formulation, while aloenin was released at a comparable degree from both forms (Figure 4). The release of analyzed standards did not reach 10% in the case of aloin A and 20% in aloenin A, which is a very low score. This is a significant discovery considering the need to retain aloin on the skin surface as described above. The slower drug release in the buffer phase for alginate matrices could be due to the formation of a more viscous and erosion-resistant ionic gel barrier [51]. Similarly, the slowed-down release of aloin from the HPMC matrix can be explained by the formation of an osmotic gradient which results in a quicker swelling rate of the polymer and a considerable increase in the thickness of the gel, consequently increasing the viscosity of the gel matrix and lowering the effective coefficient of drug diffusion [52]. There are no data in the literature showing release from a single alginate matrix or HPMC. However, Bialik-Waś et al. proposed sodium alginate/poly(vinyl alcohol) (SA/PVA) hydrogel films, obtaining a prolonged

release of Aloe vera up to five days. However, the method based on the polysaccharides was used, which did not contain the release behavior of individual active compounds [53]. The literature also describes the use of other polymers such as water-soluble and non-toxic polyvinyl alcohol (PVA) and carboxymethyl cellulose (CMC) for the formation of aloin hydrogels where 80% of aloin was released after 6 h [54]. On the contrary, aloin was not released at all from 1% gels based on Carbopol 974P and Sepigel 305, most likely by hydrogen bonds between the molecule and the aqueous environment [55]. The results of the research and literature data clearly indicate the significant impact of the selection of the hydrogel vehicle.

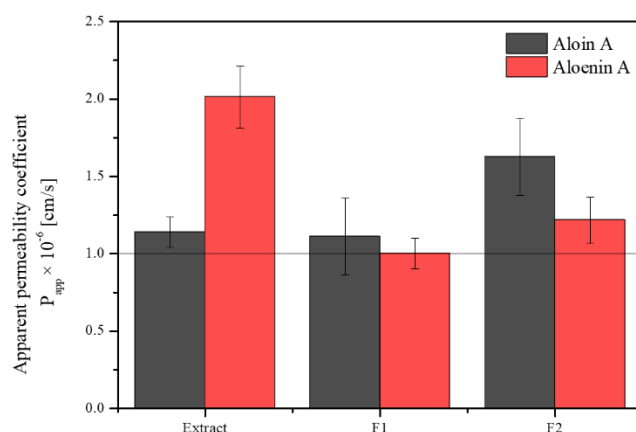


**Figure 4.** Released profiles of aloin A (a) and aloenin A (b) from formulation 1 and 2.

It is worth adding that, despite the low level of aloenin A release, the prepared formulations 1 and 2 showed comparable activity to the starting lyophilized aqueous gel. In the case of antioxidant activity (DPPH assay),  $IC_{50}$  was  $34.24 \pm 0.71$  and  $33.45 \pm 1.49$  mg/mL for formulation 1 and 2, respectively. Inhibition of hyaluronidase was  $5.80 \pm 1.12\%$  and  $6.02 \pm 0.59\%$ , whereas the inhibition of tyrosinase was  $11.23 \pm 2.32\%$  and  $12.56 \pm 1.54\%$ , for formulation 1 and 2, respectively. The obtained results do not differ statistically from those obtained for the starting lyophilized aqueous gel, which confirms the lack of influence of the hydrogel base on the activity of the finished formulation.

Finally, the permeation of active compounds from the hydrogels was also assessed (Figure 5). A decrease in the penetration of both active compounds was observed, more significantly in the case of aloenin. Again, this may be due to sticky gel formation and limited diffusion from the form. It is worth noting that both hydrogels limit the release and penetration of aloin. In the case of aloin, it is desirable to minimize its absorption to restrict the drug to the diseased area of application, avoiding the potential side effects associated with absorption. Aloin skin permeation was restricted (higher for formulation 1) because of its high affinity for the vehicle, which causes not only a slow release but also poor skin transfer [55]. It would also be appropriate to add an additional purification step to the extract to completely eliminate the aloin.

The last stage included stability studies of the developed formulations. The changes in the concentrations of both active compounds were assessed on days 0, 10, and 20 for both the lyophilized extracts and formulations 1 and 2 (Table 6). In no case was the compound content maintained at  $100 \pm 10\%$  at  $30^\circ\text{C}$ . Therefore, refrigerated storage is worth considering, as also indicated by Suriati et al. [56]. Importantly, no changes in color or consistency were observed during storage. Moreover, the addition of HPMC has little effect on the difference in the formulation stability, while the addition of sodium alginate significantly reduces this stability.



**Figure 5.** Apparent permeability coefficients for aloin A (black) and aloenin A (red) from formulation 1 (F1) and formulation 2 (F2) using the SKIN model.

**Table 6.** Stability of aloin A and aloenin A.

Formulation	Days	Aloin A	Aloenin A
		mg of Aloin A per g Dry Weight	mg of Aloenin A per g Dry Weight
Lyophilized extract	0	1.49 mg (100.00%)	1.19 mg (100.00%)
	10	1.22 ± 0.05 mg (81.88 ± 3.36%)	0.74 ± 0.02 mg (62.18 ± 1.68%)
	20	0.75 ± 0.03 mg (50.34 ± 2.01%)	0.75 ± 0.03 mg (63.03 ± 2.52%)
Formulation 1	0	0.14 mg (100.00%)	0.16 mg (100.00%)
	10	0.11 ± 0.01 mg (78.57 ± 7.14%)	0.06 ± 0.01 mg (37.50 ± 6.25%)
	20	0.05 ± 0.01 mg (35.71 ± 7.14%)	0.04 ± 0.01 mg (25.00 ± 6.25%)
Formulation 2	0	1.40 mg (100.00%)	1.02 mg (100.00%)
	10	1.07 ± 0.04 mg (76.43 ± 2.86%)	0.90 ± 0.02 mg (88.24 ± 1.96%)
	20	1.01 ± 0.03 mg (72.14 ± 2.14%)	0.81 ± 0.03 mg (79.41 ± 2.94%)

Taking into account all the studies carried out, the HPMC-based hydrogel (formulation 2) can be indicated as the one with a targeted release of active substances and greater stability. Therefore, it is worth developing this pharmaceutical form further.

#### 4. Conclusions

Both the aqueous gel from *Aloe arborescence* as well as the hydrogel as a pharmaceutical dosage form containing aqueous gel *Aloe arborescence* did not involve the use of organic solvents. For the aqueous gel from *Aloe arborescence*, significant biological activity was confirmed, indicating the obtained leaf processing as a valuable starting substrate for the hydrogel formulation. The prepared hydrogel meets the functional criteria in terms of the maintenance required activity and rheological parameters, therefore, it can be suggested that the hydrogel with *Aloe Arborescence* is a promising approach form of the treatment of skin wounds.

**Author Contributions:** Conceptualization, K.P. and J.C.-P.; methodology, K.P. and T.O.; writing—original draft preparation, K.P., M.P.-W., T.O. and J.C.-P.; writing—review and editing, M.P.-W. and J.C.-P.; supervision, J.C.-P.; funding acquisition, J.C.-P. All authors have read and agreed to the published version of the manuscript.

**Funding:** This research was funded by the Ministry of Science and Higher Education, grant number 0052/DW/2018/2.

**Institutional Review Board Statement:** Not applicable.

**Informed Consent Statement:** Not applicable.



**Data Availability Statement:** Not applicable.

**Acknowledgments:** The authors would like to thank Dominika Ludowicz for her help in carrying out the research.

**Conflicts of Interest:** The authors declare no conflict of interest. The company supplied the raw material for research, but it had no role in the design of the study; in the collection, analyses, or interpretation of data; in the writing of the manuscript, and in the decision to publish the results.

## References

1. Russo, E.B. The Case for the Entourage Effect and Conventional Breeding of Clinical Cannabis: No “Strain”, No Gain. *Front. Plant Sci.* **2019**, *9*, 1969. [[CrossRef](#)] [[PubMed](#)]
2. Ferber, S.G.; Namdar, D.; Hen-Shoval, D.; Eger, G.; Koltai, H.; Shoval, G.; Shbiro, L.; Weller, A. The “Entourage Effect”: Terpenes Coupled with Cannabinoids for the Treatment of Mood Disorders and Anxiety Disorders. *Curr. Neuropharmacol.* **2020**, *18*, 87–96. [[CrossRef](#)]
3. Chemat, F.; Vian, M.A.; Cravotto, G. Green Extraction of Natural Products: Concept and Principles. *Int. J. Mol. Sci.* **2012**, *13*, 8615–8627. [[CrossRef](#)] [[PubMed](#)]
4. Tchabo, W.; Ma, Y.; Kwaw, E.; Xiao, L.; Wu, M.; Apaliya, M.T. Impact of Extraction Parameters and Their Optimization on the Nutraceuticals and Antioxidant Properties of Aqueous Extract Mulberry Leaf. *Int. J. Food Prop.* **2018**, *21*, 717–732. [[CrossRef](#)]
5. Castro-Puyana, M.; Marina, M.L.; Plaza, M. Water as Green Extraction Solvent: Principles and Reasons for Its Use. *Curr. Opin. Green Sustain. Chem.* **2017**, *5*, 31–36. [[CrossRef](#)]
6. Płotka-Wasyłka, J.; Rutkowska, M.; Owczarek, K.; Tobiszewski, M.; Namieśnik, J. Extraction with Environmentally Friendly Solvents. *TrAC Trends Anal. Chem.* **2017**, *91*, 12–25. [[CrossRef](#)]
7. Uwineza, P.A.; Waśkiewicz, A. Recent Advances in Supercritical Fluid Extraction of Natural Bioactive Compounds from Natural Plant Materials. *Molecules* **2020**, *25*, 3847. [[CrossRef](#)]
8. Carpentieri, S.; Soltanipour, F.; Ferrari, G.; Pataro, G.; Donsi, F. Emerging Green Techniques for the Extraction of Antioxidants from Agri-Food By-Products as Promising Ingredients for the Food Industry. *Antioxidants* **2021**, *10*, 1417. [[CrossRef](#)]
9. Srivastava, J.K.; Gupta, S. Extraction, Characterization, Stability and Biological Activity of Flavonoids Isolated from Chamomile Flowers. *Mol. Cell. Pharmacol.* **2009**, *1*, 138. [[CrossRef](#)]
10. Rochfort, S.; Isbel, A.; Ezernieks, V.; Elkins, A.; Vincent, D.; Deseo, M.A.; Spangenberg, G.C. Utilisation of Design of Experiments Approach to Optimise Supercritical Fluid Extraction of Medicinal Cannabis. *Sci. Rep.* **2020**, *10*, 9124. [[CrossRef](#)]
11. Heś, M.; Dziejczak, K.; Górecka, D.; Jędrusek-Golińska, A.; Gujska, E. *Aloe vera* (L.) Webb.: Natural Sources of Antioxidants—A Review. *Plant Foods Hum. Nutr.* **2019**, *74*, 255–265. [[CrossRef](#)] [[PubMed](#)]
12. Sánchez, M.; González-Burgos, E.; Iglesias, I.; Gómez-Serranillos, M.P. Pharmacological Update Properties of Aloe Vera and Its Major Active Constituents. *Molecules* **2020**, *25*, 1324. [[CrossRef](#)] [[PubMed](#)]
13. Kupnik, K.; Primožič, M.; Knez, Ž.; Leitgeb, M. Antimicrobial Efficiency of *Aloe arborescens* and *Aloe Barbadosis* Natural and Commercial Products. *Plants* **2021**, *10*, 92. [[CrossRef](#)]
14. Arbab, S.; Ullah, H.; Weiwei, W.; Wei, X.; Ahmad, S.U.; Wu, L.; Zhang, J. Comparative Study of Antimicrobial Action of Aloe Vera and Antibiotics against Different Bacterial Isolates from Skin Infection. *Vet. Med. Sci.* **2021**, *7*, 2061–2067. [[CrossRef](#)] [[PubMed](#)]
15. Hashemi, S.A.; Madani, S.A.; Abediankenari, S. The Review on Properties of Aloe Vera in Healing of Cutaneous Wounds. *BioMed Res. Int.* **2015**, *2015*, e714216. [[CrossRef](#)]
16. Hekmatpou, D.; Mehrabi, F.; Rahzani, K.; Aminian, A. The Effect of Aloe Vera Clinical Trials on Prevention and Healing of Skin Wound: A Systematic Review. *Iran. J. Med. Sci.* **2019**, *44*, 1–9.
17. Teplicki, E.; Ma, Q.; Castillo, D.E.; Zarei, M.; Hustad, A.P.; Chen, J.; Li, J. The Effects of Aloe Vera on Wound Healing in Cell Proliferation, Migration, and Viability. *Wounds* **2018**, *30*, 263–268.
18. Burusapat, C.; Supawan, M.; Pruksapong, C.; Pitiseree, A.; Suwantemee, C. Topical Aloe Vera Gel for Accelerated Wound Healing of Split-Thickness Skin Graft Donor Sites: A Double-Blind, Randomized, Controlled Trial and Systematic Review. *Plast. Reconstr. Surg.* **2018**, *142*, 217–226. [[CrossRef](#)]
19. Zagórska-Dziok, M.; Sobczak, M. Hydrogel-Based Active Substance Release Systems for Cosmetology and Dermatology Application: A Review. *Pharmaceutics* **2020**, *12*, 396. [[CrossRef](#)]
20. Pawłowicz, K.; Ludowicz, D.; Karaźniewicz-Łada, M.; Wdowiak, K.; Cielecka-Piontek, J. Analysis of the Composition of Lyophilisates Obtained from *Aloe arborescens* Gel of Leaves of Different Ages from Controlled Crops. *Molecules* **2021**, *26*, 3204. [[CrossRef](#)]
21. Pawłowicz, K.; Sip, S.; Plech, T.; Kaproń, B.; Kobus-Cisowska, J.; Cielecka-Piontek, J. *Aloe arborescens*: In Vitro Screening of Genotoxicity, Effective Inhibition of Enzyme Characteristics for Disease Etiology, and Microbiological Activity. *Molecules* **2022**, *27*, 2323. [[CrossRef](#)] [[PubMed](#)]
22. Paczkowska-Walendowska, M.; Gościński, A.; Szymanowska, D.; Szwałgier, D.; Baranowska-Wójcik, E.; Szulc, P.; Dreczka, D.; Simon, M.; Cielecka-Piontek, J. Blackberry Leaves as New Functional Food? Screening Antioxidant, Anti-Inflammatory and Microbiological Activities in Correlation with Phytochemical Analysis. *Antioxidants* **2021**, *10*, 1945. [[CrossRef](#)] [[PubMed](#)]

23. Studzińska-Sroka, E.; Dudek-Makuch, M.; Chanaj-Kaczmarek, J.; Czepulis, N.; Korybalska, K.; Rutkowski, R.; Łuczak, J.; Grabowska, K.; Bylka, W.; Witowski, J. Anti-Inflammatory Activity and Phytochemical Profile of *Galinsoga parviflora* Cav. *Molecules* **2018**, *23*, 2133. [CrossRef] [PubMed]
24. Radek, K.A.; Ranzer, M.J.; DiPietro, L.A. Brewing Complications: The Effect of Acute Ethanol Exposure on Wound Healing. *J. Leukoc. Biol.* **2009**, *86*, 1125–1134. [CrossRef] [PubMed]
25. Mahadi, S.B.; Handayani, R.A.S.; Widowati, W.; Wilsen, W.; Dewani, Y.; Fachrial, E.; Lister, I.N.E. Antioxidant and Anti-Tyrosinase Activities of Aloe Vera Rind and Gel Extracts. *Glob. Med. Health Commun.* **2019**, *7*, 170–176. [CrossRef]
26. Fronza, M.; Caetano, G.F.; Leite, M.N.; Bitencourt, C.S.; Paula-Silva, F.W.G.; Andrade, T.A.M.; Frade, M.A.C.; Merfort, I.; Faccioli, L.H. Hyaluronidase Modulates Inflammatory Response and Accelerates the Cutaneous Wound Healing. *PLoS ONE* **2014**, *9*, e112297. [CrossRef]
27. İlhan, M.; Zengin, G.; Küpeli Akkol, E.; Aktümsek, A.; Süntar, İ. The Importance of Asphodeline Species on Enzyme Inhibition: Anti-Elastase, Anti-Hyaluronidase and Anti-Collagenase Potential. *Turk. J. Pharm. Sci.* **2016**, *13*, 323–327. [CrossRef]
28. Jiratchayamaethasakul, C.; Ding, Y.; Hwang, O.; Im, S.T.; Jang, Y.; Myung, S.W.; Lee, J.M.; Kim, H.; Ko, S.; Lee, S. In Vitro Screening of Elastase, Collagenase, Hyaluronidase, and Tyrosinase Inhibitory and Antioxidant Activities of 22 Halophyte Plant Extracts for Novel Cosmeceuticals. *Fish. Aquat. Sci.* **2020**, *23*, 6. Available online: <https://fas.biomedcentral.com/articles/10.1186/s41240-020-00149-8> (accessed on 28 February 2022). [CrossRef]
29. Barrantes, E.; Guinea, M. Inhibition of Collagenase and Metalloproteinases by Aloins and Aloe Gel. *Life Sci.* **2003**, *72*, 843–850. [CrossRef]
30. Park, M.-Y.; Kwon, H.-J.; Sung, M.-K. Evaluation of Aloin and Aloe-Emodin as Anti-Inflammatory Agents in Aloe by Using Murine Macrophages. *Biosci. Biotechnol. Biochem.* **2009**, *73*, 828–832. [CrossRef]
31. Aya, K.L.; Stern, R. Hyaluronan in Wound Healing: Rediscovering a Major Player. *Wound Repair Regen.* **2014**, *22*, 579–593. Available online: <https://onlinelibrary.wiley.com/doi/10.1111/wrr.12214> (accessed on 28 February 2022). [CrossRef] [PubMed]
32. Mapunya, M.B.; Nikolova, R.V.; Lall, N. Melanogenesis and Antityrosinase Activity of Selected South African Plants. *Evid. Based Complement. Altern. Med.* **2012**, *2012*, e374017. [CrossRef]
33. Zolghadri, S.; Bahrami, A.; Hassan Khan, M.T.; Munoz-Munoz, J.; Garcia-Molina, F.; Garcia-Canovas, F.; Saboury, A.A. A Comprehensive Review on Tyrosinase Inhibitors. *J. Enzym. Inhib. Med. Chem.* **2019**, *4*, 279–309. Available online: <https://www.tandfonline.com/doi/full/10.1080/14756366.2018.1545767> (accessed on 28 February 2022). [CrossRef] [PubMed]
34. Gupta, S.D.; Masakapalli, S.K. Mushroom Tyrosinase Inhibition Activity of *Aloe vera* L. Gel from Different Germplasms. *Chin. J. Nat. Med.* **2013**, *11*, 616–620. [CrossRef]
35. Jones, K.; Hughes, J.; Hong, M.; Jia, Q.; Orndorff, S. Modulation of Melanogenesis by Aloesin: A Competitive Inhibitor of Tyrosinase. *Pigment Cell Res.* **2002**, *15*, 335–340. [CrossRef] [PubMed]
36. Wu, X.; Yin, S.; Zhong, J.; Ding, W.; Wan, J.; Xie, Z. Mushroom Tyrosinase Inhibitors from *Aloe Barbadensis* Miller. *Fitoterapia* **2012**, *83*, 1706–1711. [CrossRef]
37. Garcia, C.C.; Potian, J.G.; Hognason, K.; Thyagarajan, B.; Sultatos, L.G.; Souayah, N.; Routh, V.H.; McArdle, J.J. Acetylcholinesterase Deficiency Contributes to Neuromuscular Junction Dysfunction in Type 1 Diabetic Neuropathy. *Am. J. Physiol. Endocrinol. Metab.* **2012**, *303*, E551–E561. [CrossRef] [PubMed]
38. Shaker, M.A. The Effect of Aloe Vera Extract on Acetylcholinesterase AchE and Monoamine Oxidase MAO Enzymes. *MJS* **2019**, *29*, 88–92. [CrossRef]
39. Wamer, W.G.; Vath, P.; Falvey, D.E. In Vitro Studies on the Photobiological Properties of Aloe Emodin and Aloin A. *Free Radic. Biol. Med.* **2003**, *34*, 233–242. [CrossRef]
40. Vath, P.; Wamer, W.G.; Falvey, D.E. Photochemistry and Phototoxicity of Aloe Emodin. *Photochem. Photobiol.* **2002**, *75*, 346–352. [CrossRef]
41. Sannino, A.; Demitri, C.; Madaghiele, M. Biodegradable Cellulose-Based Hydrogels: Design and Applications. *Materials* **2009**, *2*, 353–373. [CrossRef]
42. Lee, K.Y.; Mooney, D.J. Alginate: Properties and Biomedical Applications. *Prog. Polym. Sci.* **2012**, *37*, 106–126. [CrossRef] [PubMed]
43. Pereira, R.; Mendes, A.; Bártolo, P. Alginate/Aloe Vera Hydrogel Films for Biomedical Applications. *Procedia CIRP* **2013**, *5*, 210–215. [CrossRef]
44. Zainal, S.H.; Mohd, N.H.; Suhaili, N.; Anuar, F.H.; Lazim, A.M.; Othaman, R. Preparation of Cellulose-Based Hydrogel: A Review. *J. Mater. Res. Technol.* **2021**, *10*, 935–952. [CrossRef]
45. Passafiume, R.; Gaglio, R.; Sortino, G.; Farina, V. Effect of Three Different Aloe Vera Gel-Based Edible Coatings on the Quality of Fresh-Cut “Hayward” Kiwifruits. *Foods* **2020**, *9*, 939. [CrossRef]
46. Khan, A.W.; Kotta, S.; Ansari, S.H.; Sharma, R.K.; Kumar, A.; Ali, J. Formulation Development, Optimization and Evaluation of Aloe Vera Gel for Wound Healing. *Pharmacogn. Mag.* **2013**, *9* (Suppl. 1), S6–S10. [CrossRef]
47. Osmalek, T.; Milanowski, B.; Froelich, A.; Górska, S.; Białas, W.; Szybowicz, M.; Kapela, M. Novel Organogels for Topical Delivery of Naproxen: Design, Physicochemical Characteristics and in Vitro Drug Permeation. *Pharm. Dev. Technol.* **2017**, *22*, 521–536. [CrossRef]
48. Ansari, S.; Rashid, M.; Ibney, A.; Waghmare, P.R.; Nobes, D.S. Measurement of the Flow Behavior Index of Newtonian and Shear-Thinning Fluids via Analysis of the Flow Velocity Characteristics in a Mini-Channel. *SN Appl. Sci.* **2020**, *2*, 1787. [CrossRef]

49. Yoo, Y.J.; Um, I.C. Examination of Thermo-Gelation Behavior of HPMC and HEMC Aqueous Solutions Using Rheology. *Korea-Aust. Rheol. J.* **2013**, *25*, 67–75. [[CrossRef](#)]
50. Rogovina, L.Z.; Vasil'ev, V.G.; Braudo, E.E. Definition of the Concept of Polymer Gel. *Polym. Sci. Ser. C* **2008**, *50*, 85–92. [[CrossRef](#)]
51. Liew, C.V.; Chan, L.W.; Ching, A.L.; Heng, P.W.S. Evaluation of Sodium Alginate as Drug Release Modifier in Matrix Tablets. *Int. J. Pharm.* **2006**, *309*, 25–37. [[CrossRef](#)] [[PubMed](#)]
52. Enayatifard, R.; Saeedi, M.; Akbari, J.; Tabatabaee, Y.H. Effect of Hydroxypropyl Methylcellulose and Ethyl Cellulose Content on Release Profile and Kinetics of Diltiazem HCl from Matrices. *Trop. J. Pharm. Res.* **2009**, *8*, 425–432. [[CrossRef](#)]
53. Bialik-Waś, K.; Pluta, K.; Malina, D.; Barczewski, M.; Malarz, K.; Mrozek-Wilczkiewicz, A. Advanced SA/PVA-Based Hydrogel Matrices with Prolonged Release of Aloe Vera as Promising Wound Dressings. *Mater. Sci. Eng. C* **2021**, *120*, 111667. [[CrossRef](#)] [[PubMed](#)]
54. Lee, K.-Y.; Kim, J.; Jeong, I.-s. Aloin Loaded Wound Dressing Composition Based on Hydrogel and Manufacturing Method Thereof. KR20150056725A. Available online: <https://patents.google.com/patent/KR20150056725A/en> (accessed on 27 May 2015).
55. Bergamante, V.; Ceschel, G.C.; Marazzita, S.; Ronchi, C.; Fini, A. Effect of Vehicles on Topical Application of Aloe Vera and Arnica Montana Components. *Drug Deliv.* **2007**, *14*, 427–432. [[CrossRef](#)]
56. Suriati, L.; Utama, I.M.S.; Harjosuwono, B.A.; Gunam, I.B.W. Stability Aloe Vera Gel as Edible Coating. *IOP Conf. Ser. Earth Environ. Sci.* **2020**, *411*, 012053. [[CrossRef](#)]