

Immune-Mediated Myocarditis in Fabry Disease Cardiomyopathy

Andrea Frustaci, MD; Romina Verardo, PhD; Claudia Grande, PhD; Nicola Galea, MD, PhD; Pierluca Piselli, ScDMPH; Iacopo Carbone, MD; Maria Alfarano, MD; Matteo Antonio Russo, MD; Cristina Chimenti, MD, PhD

Background—Glycosphingolipid accumulation in Fabry cells generates a proinflammatory response that may influence disease evolution and responsiveness to enzyme replacement therapy. This study evaluated incidence, mechanism, and impact of myocarditis in Fabry disease cardiomyopathy (FDCM).

Methods and Results—Myocarditis, defined as CD3⁺ T lymphocytes >7/mm² associated with necrosis of glycolipid-laden myocardiocytes, was retrospectively evaluated in endomyocardial biopsies from 78 patients with FDCM: 13 with maximal wall thickness (MWT) <11 mm (group 1), 17 with MWT 11 to 15 mm (group 2), 30 with MWT 16 to 20 mm (group 3), and 18 with MWT >20 mm (group 4). Myocarditis was investigated by polymerase chain reaction for cardiotropic viruses, by serum antiheart and antimyosin antibodies, and by cardiac magnetic resonance. Myocarditis was recognized at histology in 48 of 78 patients with FDCM (38% of group 1, 41% of group 2, 66% of group 3, and 72% of group 4). Myocarditis was characterized by positive antiheart and antimyosin antibodies and negative polymerase chain reaction for viral genomes. CD3⁺ cells/mm² correlated with myocyte necrosis, antimyosin autoantibody titer, and MWT ($P<0.001, r=0.79$; $P<0.001, r=0.84$; $P<0.001, r=0.61$, respectively). Cardiac magnetic resonance showed myocardial edema in 24 of 78 patients (31%): 0% of group 1, 23% of group 2, 37% of group 3, and 50% of group 4.

Conclusions—Myocarditis is detectable at histology in up to 56% of patients with FDCM. It is immune mediated and correlates with disease severity. It can be disclosed by antiheart/antimyosin autoantibodies and in the advanced phase by cardiac magnetic resonance. It may contribute to progression of FDCM and resistance to enzyme replacement therapy. (*J Am Heart Assoc.* 2018;7:e009052. DOI: 10.1161/JAHA.118.009052.)

Key Words: cardiomyopathy • Fabry disease • heart failure • myocarditis

Fabry disease (FD) is an X-linked inborn error of glycosphingolipid catabolism caused by deleterious mutations in the *GLA* (α -galactosidase A) gene encoding the lysosomal hydrolase GAL.^{1,2} The marked deficiency or absence of GAL activity results in the systemic accumulation

of globotriaosylceramide and related glycosphingolipids within the lysosomes, particularly in microvascular endothelial cells, vascular smooth muscle cells, renal tubular cells, podocytes, and cardiomyocytes.^{3–7}

FD cardiomyopathy (FDCM) is a major determinant of patient survival, and its management represents a main therapeutic challenge. Indeed, the impact of enzyme replacement therapy (ERT) on FDCM is still controversial,^{8–12} and although there is agreement that early ERT administration, particularly in prehypertrophic FDCM, prevents progression of the disease, the advanced form is believed to be irreversible.

Mechanisms of resistance to ERT are still unclear, although expansion of interstitial space and myocardial fibrosis appear to be implicated.

Glycosphingolipid accumulation in Fabry cardiomyocytes promotes a proinflammatory response that may influence disease progression and responsiveness to ERT. In this report, myocarditis is assessed, characterized, and tested for possible infectious and/or autoimmune origin in a large FDCM series. Inflammatory damage at histology is compared with cardiac magnetic resonance (CMR) features.

From the Department of Cardiovascular, Nephrologic, Anesthetic and Geriatric Sciences, La Sapienza University of Rome, Italy (A.F., C.G., M.A., C.C.); Molecular and Cellular Cardiology Lab (A.F., R.V., C.C.), and Department of Epidemiology and Preclinical Research (P.P.), IRCCS ‘L. Spallanzani’, Rome, Italy; Department of Radiological, Oncological and Pathological Sciences, Sapienza University, Rome, Italy (N.G., I.C.); MEBIC Consortium, San Raffaele 21 University, Rome, Italy (M.A.R.).

Correspondence to: Andrea Frustaci, MD, Department of Cardiovascular, Respiratory, Nephrologic, Anesthesiologic and Geriatric Sciences, La Sapienza University, Viale del Policlinico 155, 00161 Rome, Italy. E-mail: biocard@inmi.it

Received March 1, 2018; accepted June 25, 2018.

© 2018 The Authors. Published on behalf of the American Heart Association, Inc., by Wiley. This is an open access article under the terms of the Creative Commons Attribution-NonCommercial-NoDerivs License, which permits use and distribution in any medium, provided the original work is properly cited, the use is non-commercial and no modifications or adaptations are made.

Clinical Perspective

What Is New?

- Pathophysiology of Fabry disease is still elusive.
- This study demonstrates that the highly immunogenic globotriaosylceramide released by Fabry myocytes through a constitutional secretory pathway or cell necrosis activates immune-mediated myocardial inflammation that occurs with disease progression and may limit the impact of enzyme replacement therapy.

What Are the Clinical Implications?

- In patients with Fabry disease cardiomyopathy in whom an overlapping inflammatory process is shown by T2-mapping signals at cardiac magnetic resonance and/or histology, further studies may be warranted to determine whether immunosuppressive therapy may improve the disease and perhaps the response to enzyme replacement therapy.

Methods

The data, analytic methods, and study materials will not be made available to other researchers for purposes of reproducing the results or replicating the procedure.

Patient Population

From January 2000 to May 2016 in our department, 78 patients (51 male, 27 female; mean age 45.5 ± 9.7 years) received a diagnosis of FDCM. Among them, 60 had classic FD mutations, whereas 18 had a late-onset cardiac variant due to N215S mutation. The diagnosis was based on detection of a pathogenic mutation of *GLA* and the identification of low-level *GLA* enzyme activity in the peripheral leukocytes of male participants and on an abnormal endomyocardial biopsy (EMB) showing accumulation of glycosphingolipids in the cardiac cells. Of the diagnosed patients, 13 were in a prehypertrophic phase (maximal wall thickness [MWT] < 11 mm), 17 had mild hypertrophy (MWT 11–15 mm), 30 had moderate left ventricular (LV) hypertrophy (MWT 16–20 mm), and 18 had advanced disease (MWT > 20 mm). MWT was defined as the greatest thickness of any segment of the LV wall. All clinical and pathological data were obtained at the time of diagnosis when patients were not yet on ERT. The study was approved by the ethics committee of our institution, and the participants gave written informed consent.

Cardiac Studies

Extensive clinical examination, including FD systemic manifestations, noninvasive (resting ECG, Holter monitoring,

echocardiography with tissue Doppler analysis, CMR) and invasive cardiac studies, was performed in all patients, as described.¹³

Invasive cardiac exams were performed after patient written informed consent and approval by the ethics committee of our institution and included cardiac catheterization, coronary and LV angiography, and biventricular or LV EMB. The presence of slow coronary flow, defined as the delayed opacification of the distal vasculature in angiographically normal or nearly normal coronary arteries, was determined and defined in accordance with TIMI (Thrombolysis in Myocardial Infarction) frame counting.¹⁴

CMR Image Acquisition

All CMR exams were performed on a 1.5-T scanner (Magnetom Avanto; Siemens Medical Systems) using body and phase-array coils.

The CMR protocol included the following elements:

1. Cine balanced steady-state free precession images were acquired during breath holds in the short-axis, 2-chamber, and 4-chamber planes.
2. Black blood T2-weighted short τ inversion recovery (T2w-STIR) images for myocardial edema detection used a triple-inversion recovery preparation module; the body coil was adapted for the measurement of a relative myocardial-to-skeletal muscle signal intensity (SI) ratio because of its more homogeneous signal (repetition time, 2 R-to-R intervals (the interval between two consecutive normal ECG waveforms); echo time, 75 ms; flip angle, 180° ; inversion time, 170 ms; slice thickness, 8 mm; no interslice gap; field of view, 340–400 mm; matrix, 256×256 ; voxel size, $2.3 \times 1.3 \times 8$ mm). The T2w-STIR images were acquired on short-axis planes covering the entire left ventricle during 6 to 8 consecutive breath holds.
3. ECG-gated single-shot modified Look-Locker inversion recovery sequence with the original 3(3)3(3)5 scheme and motion-correction postprocessing algorithm (Siemens WIP package no. 448) for native T1 mapping was acquired on 2 basal and midventricular short-axis planes.
4. Late gadolinium-enhanced (LGE) imaging was performed 15 minutes after bolus injection of 0.2 mmol/kg of body weight of gadoterate meglumine (gadolinium-DOTA; Dotarem), using a segmented phase-sensitive inversion recovery gradient echo pulse sequence, setting the acquisition window to mid-end diastole and paying extreme care in setting the inversion time to null for the signal of normal myocardium (values ranging from 250 to 300 ms) Sequence parameters were as follows: repetition time, 9.6/4.4; matrix, 256×208 ; flip angle, 25° ; slice thickness, 8.0 mm; slice spacing, 2.0 mm.

Gadolinium injection was avoided in 6 patients because of severe chronic renal failure (estimated glomerular filtration rate <30 mL/min per 1.73 m²).

CMR Image Analysis

Image analysis was performed using dedicated software (Cvi42, v5.3.0; Circle Cardiovascular Imaging). End-diastolic MWT, LV myocardial mass, ventricular volumes (indexed to body surface area), and ejection fraction were measured in short-axis cine balanced steady-state free precession images.

Myocardial edema was assessed in T2w-STIR images by comparing the LV myocardial SI against skeletal muscle included in the same slice, as recommended in the “Lake Louise Criteria.”¹⁵ The T2 SI ratio was calculated as T2 SI ratio=SI myocardium/SI skeletal muscle. Myocardial edema was diagnosed when the global or focal T2 SI ratio was >1.9.

Native T1 maps were automatically elaborated by applying a nonlinear curve fitting, using the 3-parameter signal method. Global T1 value was measured as the mean of T1 values calculated in all 3 planes, avoiding LGE areas and leaving adequate margins of separation from tissue interfaces with adipose epicardial tissue and ventricular cavity. In addition, the T1 value of a 1-cm² region of interest within the midventricular septum was calculated as a more reproducible measure to minimize in-plane and through-plane partial volume effects.¹⁶

LGE areas were defined as a myocardial zone of SI >5 SD above the remote myocardium, as reported elsewhere.¹⁷

Invasive and EMB Studies

Cardiac catheterization with LV or biventricular ventriculography and coronary angiography was obtained in all patients. EMB was performed in the septal–apical region of the left or both ventricles approached using a 7F (501-613A Cordis) long sheath introduced from a femoral access. The site of the biopsy was identified on a radiographic view using flashing of contrast medium. Three to 6 right ventricular biopsies or 3 to 6 LV biopsies (from 2 to 5 mm³) were drawn from each patient. Myocardial samples were processed for routine histological and histochemical analysis and for transmission electron microscopy. Two frozen endomyocardial samples per patient were processed for real-time polymerase chain reaction screening of the most common cardiotropic viruses in the presence of myocardial inflammation at histology.

Histology and Electron Microscopy

For histological analysis, the EMB samples were fixed in 10% buffered formalin and paraffin embedded. Sections 5- μ m thick were stained with hematoxylin and eosin, Masson trichrome,

and Miller’s elastic van Gieson. Histochemistry with periodic acid–Schiff and Sudan black stains was obtained in frozen sections to evaluate the presence of intracellular glycolipid material.

For the phenotypic characterization of the inflammatory infiltrates, immunohistochemistry for CD3, CD43, CD45RO, and CD68 was performed. Briefly, myocardial sections were incubated with mouse monoclonal primary antibodies and a peroxidase/antiperoxidase complex, followed by labeling with the chromogen diaminobenzidine. The presence of an inflammatory infiltrate ≥ 14 leukocytes/mm² including up to 4 monocytes/mm², with the presence of CD3⁺ T lymphocytes ≥ 7 cells/mm² associated with evidence of degeneration and/or necrosis of the adjacent cardiomyocytes, was considered diagnostic for myocarditis. The number of CD3⁺ cells was manually counted using a tally counter on a high-power field ($\times 400$) scanning the entire slide. The area of tissue samples was measured using a computerized system (Imaging Software/NIS-Elements AR 4.30; Nikon Instruments). The number of CD3⁺ cells was expressed as the number of cells/mm². Morphometric evaluation was performed by a pathologist blinded to clinical data.

For transmission electron microscopy, additional samples were fixed in 2% glutaraldehyde in 0.1 mol/L phosphate buffer (pH 7.3), post fixed in osmium tetroxide, and processed following a standard schedule for embedding in Epon resin. Ultrathin sections were stained with uranyl acetate and lead hydroxyde. A Philips CM-10 transmission electron microscope was used for observation and photographic analysis.

Molecular Biology Studies

Real-time polymerase chain reaction was performed on 2 frozen EMB tissue samples to search for the most common DNA (adenovirus, cytomegalovirus, parvovirus B19, Epstein–Barr virus, human herpes virus 6, and herpes simplex virus 1 and 2) and RNA (enterovirus, influenza virus A and B, hepatitis C virus) for cardiotropic viruses in patients with histological evidence of myocarditis.¹⁸

Antiheart Autoantibodies

Patient sera were tested for the presence of circulating cardiac autoantibodies using a standard indirect immunofluorescence technique with a substrate of 4- μ m-thick unfixed cryostat sections of human atrium and intercostal skeletal muscle of blood group O patients.^{18,19}

Briefly, patient sera were diluted 1/10 in pH 7.2 phosphate-buffered saline solution, and fluorescein isothiocyanate-labeled rabbit antihuman immunoglobulin was used at 1:100 dilution. The intensity of immunofluorescence of the

positive control (known positive serum) at 1/40 dilution was used as the cutoff point for positivity. Omission of the patient serum and known negative serum were included in every assay (negative controls).

ELISA Test for Antimyosin Antibodies

Patient sera were screened for the presence of antimyosin antibodies, detected by a human myosin ELISA kit. As controls, we used a pool of normal sera from participants matched with patients for age and sex. Standards and undiluted samples were added to the micro-ELISA plate wells and combined with the specific antibody. The optical density proportional to the concentration of human myosin was measured spectrophotometrically at a wavelength of $450\text{ nm} \pm 2\text{ nm}$. The detection range of the human myosin ELISA kit is 1.56 to 100 ng/mL. The concentration in the samples was calculated comparing the optical density of the samples with the standard curve using the software interface GraphExpert Professional 1.4.0 (Hyams Development) and expressed as ng/mL.

Statistical Analysis

Descriptive analysis was conducted using median and interquartile range for numeric variables and proportions for qualitative variables. Statistical analysis was performed with a nonparametric Kruskal–Wallis test to evaluate differences within groups. Multiple comparisons of the median values were performed with the Dunn post test. Significance was set as $P < 0.05$. The χ^2 test was used for comparison of categorical variables. The correlations between CD3 grading and human myosin antibodies, MWT, age, and enzyme activity were explored with the Spearman ρ test. Data analysis was performed using GraphPad Prism v6.04 for Windows (GraphPad Software).

Results

Figure 1 shows the main clinical, histological, and immunological characteristics of 78 patients with FDCM enrolled in the study and divided in 4 groups depending on the extent of LV MWT at CMR. Age, sex, genetic mutation, enzymatic activity, cardiac symptoms, and extracardiac manifestations are reported in Table.

Participant age increased among groups. Patients in groups 1 and 2 were younger (median ages of 31 and 42 years, respectively) than those in groups 3 and 4 (median ages of 50 and 53 years, respectively); differences were significant for group 1 versus groups 3 and 4 and for group 2 versus group 4 ($P < 0.05$; Table).

Cardiac Studies

Group 1 patients presented normal ECG voltages and normal LV wall thickness and motion at 2-dimensional echocardiogram. They were biopsied because of persistent chest pain with abnormal ST-segment deflection at stress ECG (5 patients) or palpitations and Lown class >3 ventricular ectopic beats at ECG/Holter (8 patients) associated with a pathogenic mutation of *GLA*.

In group 2, increased ECG voltages (Sokolov–Lyon criteria) were observed in 10 patients, and major complaints were palpitation and chest pain; ventricular ectopic beats with Lown class ≥ 3 were documented in 6 patients.

Group 3 patients complained of dyspnea on effort, and 14 in the group also reported anginal pain. LV hypertrophy was observed at ECG in 24 patients, and left bundle-branch block was observed in 6 patients. Lown class ≥ 4 ventricular arrhythmias requiring antiarrhythmics were relieved in 4 patients.

Group 4 patients were always symptomatic, showing New York Heart Association class II–IV and often chest pain. Occurrence of pain was usually associated with increase of serum troponin I. ECG was systematically abnormal with elevated QRS voltages, suggesting LV hypertrophy and ventricular repolarization abnormalities in 14 patients, left bundle-branch block in 4 patients, and atrial fibrillation in 5 patients. Ventricular arrhythmias at ECG/Holter required antiarrhythmic drugs for 3 patients (nonsustained ventricular tachycardia) and implantable converter–defibrillator implantation for 2 patients (because of sustained ventricular tachycardia). Pacemaker implantation was needed for 2 patients.

Cardiac Magnetic Resonance

CMR features are reported in Figure 1. CMR images are reported in Figures 2 through 5 (panels A–C) representing groups 1 through 4, respectively.

The analysis of T2w-STIR images showed evidence of myocardial edema in 24 of 78 patients (31%) that increased with the degree of LV hypertrophy. No significant differences were found in the global myocardium-to-skeletal muscle T2 SI ratio values among 4 groups, ranging from 1.43 (group 1) to 1.78 (group 4).

In 87% (21/24) of patients, myocardial edema areas in T2w-STIR images were evident in hypertrophic myocardium (myocardial segments with MWT $>11\text{ mm}$); 17 of 24 patients (70%) had patchy midwall distribution in the basal anteroseptal wall and 7 of 24 had involvement of the anterolateral wall. LGE was documented in 53 patients (68%). In 46 of 53 patients (87%), LGE was located in the inferolateral wall with subendocardial midwall distribution

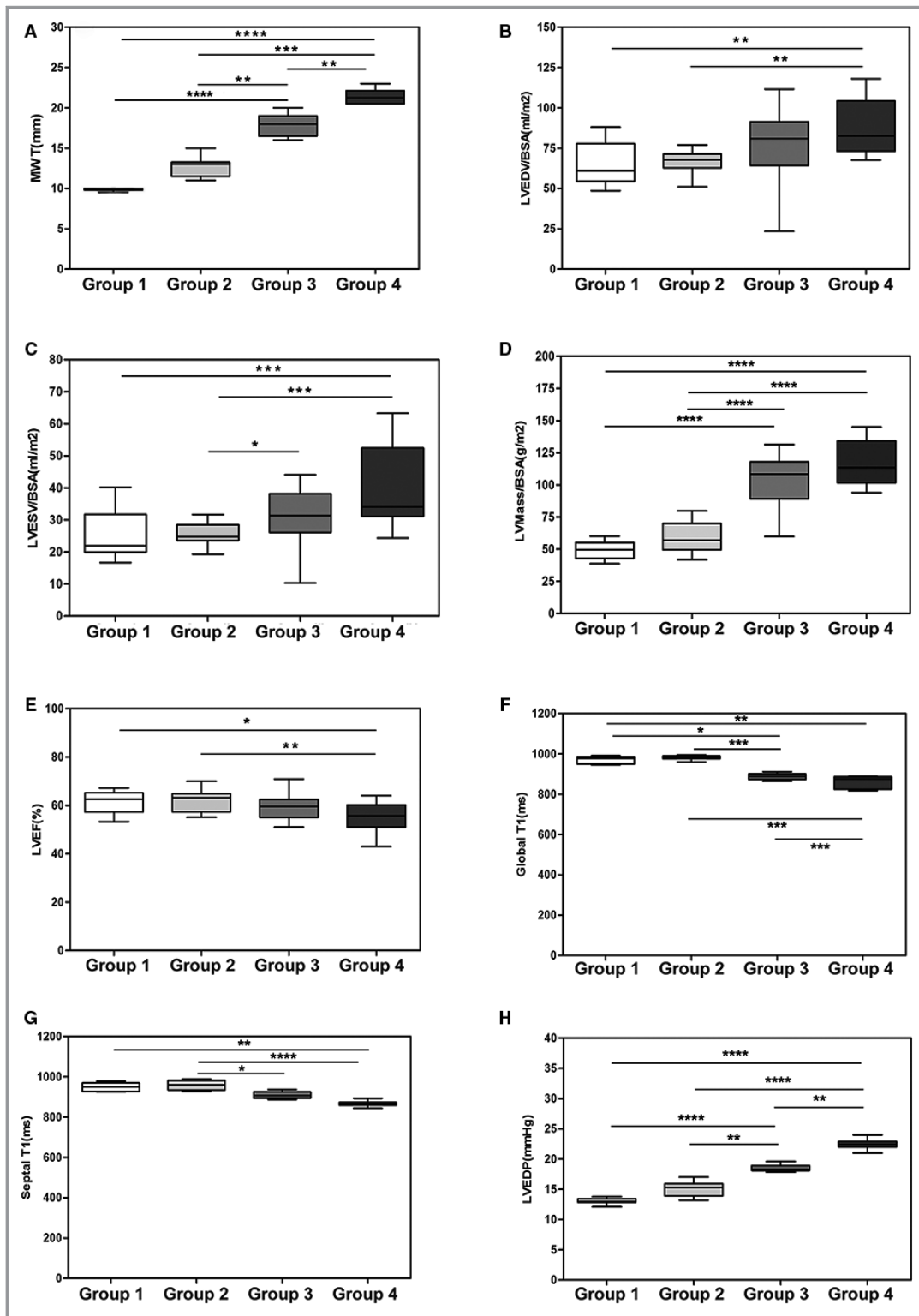


Figure 1. Box plot distribution by group for definition of relevant variables. A, Maximal wall thickness (MWT; mm). B, Left ventricular end-diastolic volume/body surface area (LVEDV/BSA; mL/m²). C, Left ventricular end-systolic volume/body surface area (LVESV/BSA; mL/m²). D, Left ventricular mass/body surface area (LV mass/BSA; g/m²). E, Left ventricular ejection fraction (LVEF; %). F, Global T1 (ms). G, Septal T1 (ms). H, Left ventricular end-diastolic pressure (LVEDP; mm Hg). I, Troponin I (μg/L). L, CD3⁺ cells/high-power field (HPF). J, Apoptosis (nuclei/10⁶). K, Necrosis (nuclei/10⁶). L, Antimyosin autoantibodies (ng/mL). M, Enzymatic activity (nmol/h/mL). Comparison among groups was performed using the Dunn test. **P*<0.05; ***P*<0.01; ****P*<0.001; *****P*<0.0001.

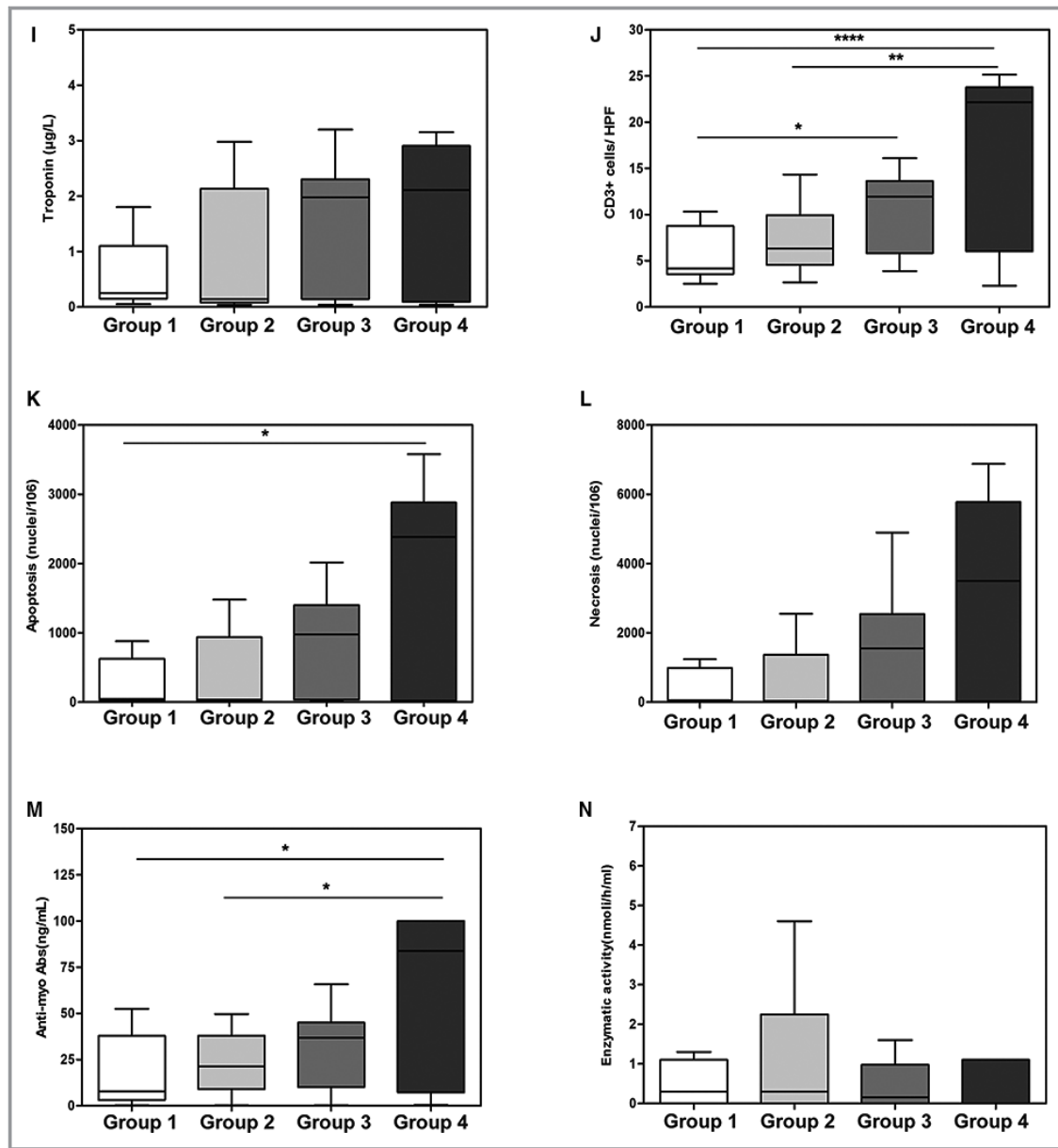


Figure 1. Continued

and was not associated with segments in which MWT was measured, which was mainly the basal septum. LGE increased with increasing severity by group and was detected in 23% of group 1 patients, 53% of group 2 patients, 77% of group 3 patients, and 100% of group 4 patients ($P < 0.05$ versus group 1).

T1 measurements were available in only 34 of 78 patients (44%) because the sequence package became available at our institution in 2013. Both global and septal mean T1 values were higher in pre- and mild hypertrophic groups compared with the groups with moderate and advanced disease ($P < 0.05$), reflecting the greater tissue accumulation of glycosphingolipids in patterns with MWT > 14 mm.

Invasive Cardiac Studies

Cardiac catheterization showed an increased LV or biventricular end-diastolic pressure (> 12 mm Hg) in 7 of 13 patients in group 1 and in all patients in groups 2 through 4. LV end-diastolic pressure was increasingly raised from group 1 to group 4. LV ejection fraction was reduced ($< 50\%$) in 6 patients in group 4. Coronary angiography showed epicardial coronary stenosis in 4 patients, requiring percutaneous transluminal coronary angioplasty and stenting in 3 and coronary artery bypass grafting in 1. Coronary flow was usually slow in patients in groups 3 and 4, in 4 patients in group 1, and in 7 patients in group 2 (TIMI frame count, mean \pm SD: 45.3 ± 7.3

Table. Gene Mutation, Enzymatic Activity, and Clinical Manifestations of the 4 Groups of Patients With Fabry Disease

Patient	Age y/Sex	Cardiac Symptoms	Extracardiac Manifestations	Enzymatic Activity nmol/h/mL (n.v >3)	Genotype
Group 1					
1	36/F	P, A	K	4.6	R220X
2	20/M	P	Ap, Ak	0	R220X
3	28/M	P	...	0.5	N215S
4	35/M	P	Ap, Ak, K, E	0	Q279K
5	39/F	P, A	...	0.3	N215S
6	29/M	P	CV, Ap	0.1	G328R
7	22/M	A	Ap, Ak, CV, K	0	c946delG
8	25/M	P	Ap, Ak, CV, E	0	Q279K
9	39/F	A, D	Ap, CV	1.3	C378Y
10	44/F	P	CV	0.9	R220X
11	31/M	P	...	0.2	N215S
12	26/M	A	...	0.3	N215S
13	37/F	A	CV, Ap	3.5	R227Q
Group 2					
1	38/M	D, P	K, Ap, CNS, E	0	G328R
2	43/M	A, P	K, Ap, CNS	0	G238R
3	46/F	P	CV, K	2.5	C223Y
4	35/F	P	...	6.3	N215S
5	38/F	A, P	...	1.0	N215S
6	39/F	P	CV, Ap	3.2	R227Q
7	60/F	D, P	CV, Ap	0.5	C223Y
8	53/F	D, P	CV, Ap	2.0	R227Q
9	36/F	A, D, P	K, Ap, CNS	0	C946delG
10	28/M	P	CV, Ak, Ap	0	Q279K
11	52/F	D, P	K, CV	1.4	C378Y
12	42/M	D, P	K, Ap, E	0	R220X
13	48/M	A	...	0.2	N215S
14	38/M	A	K, CV, Ak	0.1	Q279K
15	52/F	A	K, Ap, CNS	4.6	C378Y
16	42/M	A, D	K, Ap, Ak, CV	0	R220X
17	48/M	A, D	...	0.3	N215S
Group 3					
1	50/M	A, D, P	K, E, CV	0	R220X
2	53/M	D	...	0.9	N215S
3	45/M	D, P	CNS, E	0	Q279K
4	59/F	D, P	...	2.8	N215S
5	44/M	A, D, P	K, Ap, Ak, E	0	G328R
6	58/F	D, P	CV	1.2	C223Y
7	50/M	D	...	0.3	N215S
8	41/M	A, D	Ap, E, CV	0	C378Y
9	52/M	D, P	...	0.5	N215S

Continued

Table. Continued

Patient	Age y/Sex	Cardiac Symptoms	Extracardiac Manifestations	Enzymatic Activity nmol/h/mL (n.v >3)	Genotype
10	39/M	D, P	...	0.1	N215S
11	49/F	D, P	K, Ap	5.6	R227Q
12	44/F	D	Ap, CV	3.5	C378Y
13	60/M	A, D, P	K, CNS, Ap, E, CV	0	C946delG
14	51/M	D, P	K, Ap, Ak, E, CV	0	Q279K
15	53/M	D, P	K, Ap, Ak, E, CV	0	Q279K
16	54/M	A, D, P	K, CNS, Ap, CV	0.1	R220X
17	52/M	D, P	...	0.2	N215S
18	59/F	A, D, P	K, CNS, Ap, Ak, E	0.5	C946delG
19	39/M	P	K, Ap, Ak, E	0	Q279K
20	46/M	A, P	K, Ap, CV	0	C378Y
21	55/F	A, P	Ap, CNS,	1.2	R220X
22	43/M	D	...	0	N215S
23	44/M	D	K, Ak, E	0	C378Y
24	44/M	D	K, CNS, CV, E	0.2	R220X
25	47/M	D, P	...	0.2	N215S
26	49/F	A, D, P	K, CNS, CV	0.6	C946delG
27	39/M	A, P	K, Ap, Ak, E, CV	0	Q279K
28	46/F	A, P	E, CV	0	C378Y
29	55/F	A, P	E, CV	1.6	R220X
30	63/M	A, D, P	...	1.3	N215S
Group 4					
1	55/M	A, D, P	K, Ak, CV, E	0	pR227X
2	52/M	A, D, P	K, CNS, Ap, E	0	C427delACTT
3	53/M	D, P	K, CNS, Ak, Ap, E	0	C946delG
4	48/M	D, P	...	0.2	N215S
5	53/M	A, D, P	K, Ap, E	0	Y216C
6	57/F	A, D, P	K, Ap, E	4.1	Q279K
7	62/M	D, P	K, Ak, Ap, E	0.2	R227Q
8	50/F	A, D, P	K, CV, E, Ak, Ap, CNS	0	C946delG
9	56/M	D, P	CV, Ak, Ap	0	Q279k
10	47/M	A, D, P	K, Ak, Ap, CV, E, CNS, E	0	C946delG
11	51/M	A, D, P	K, Ap, CV	0	Q279K
12	60/F	D, P	K, Ap, Ak, CV	0	C946delG
13	69/F	A, D, P	K, CV	3.8	Q279K
14	48/M	A, D, P	K, Ap, Ak, CNS, CV, E	0	C946delG
15	52/M	D, P	K, Ap, E	0	pR227X
16	54/F	D, P	...	0	N215S
17	53/F	D, P	K, E	5.1	R22XQ
18	52/M	D, P	K, Ap, Ak, E	4.8	C378Y

A indicates angina; Ak, angiokeratoma; Ap, acroparesthesia; CNS, central nervous system (transient ischemic attack and/or stroke and/or progressive white matter lesions and/or dolichoectasia of the basilar artery); CV, cornea verticillata; D, dyspnea; E, ear; F, female; K, kidney involvement (ie, pathological microalbuminuria, and/or proteinuria and/or estimated glomerular filtration rate reduction); M, male; P, palpitation.

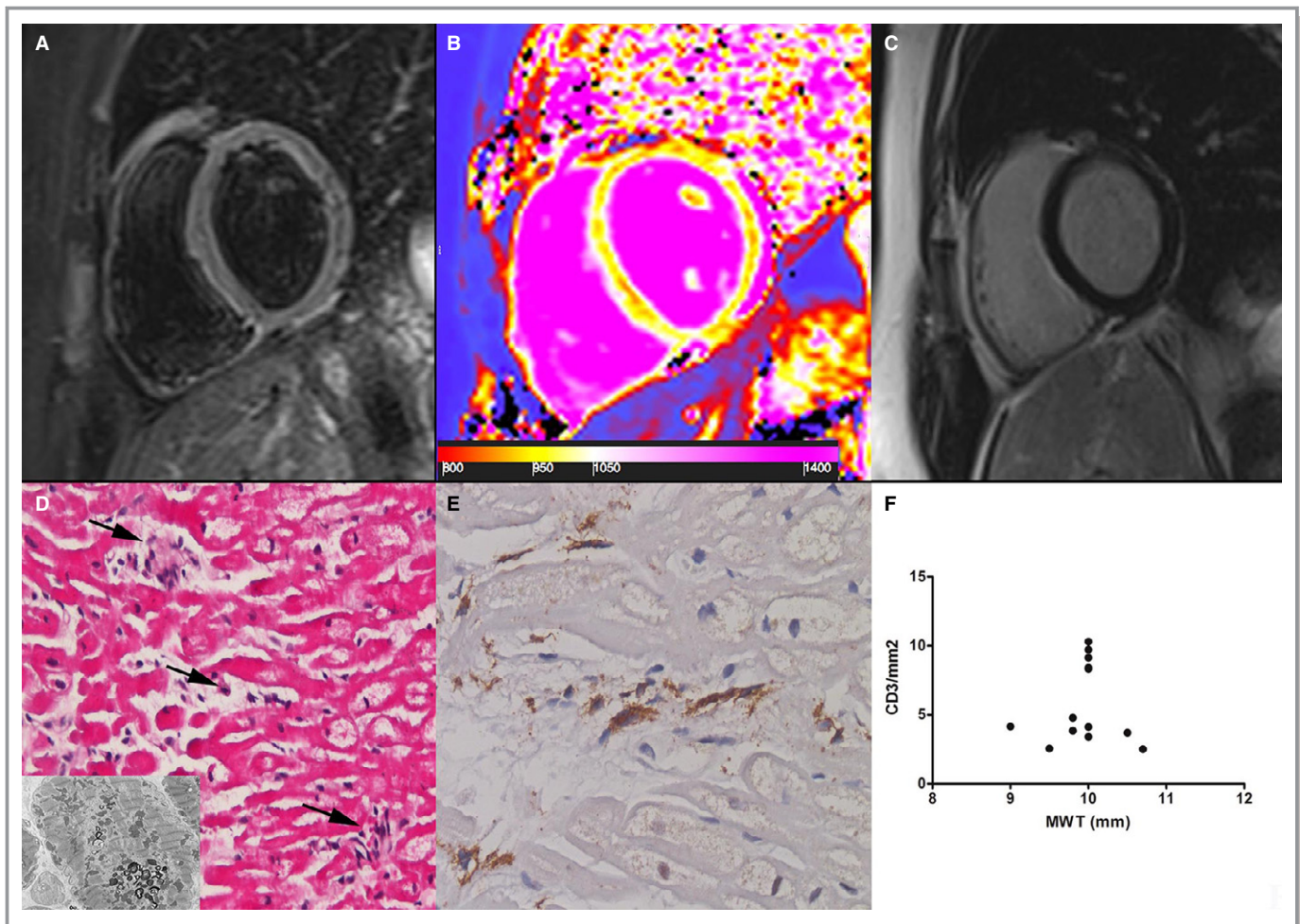


Figure 2. Group 1 patient. A 22-year-old woman with prehypertrophic Fabry disease cardiomyopathy (maximal wall thickness [MWT]: 8 mm) showing normal myocardium in a T2-weighted short τ inversion recovery image (A) and a late gadolinium-enhanced image (C). Analysis of T1 mapping (B) showed a reduced septal T1 value (923 ± 30 ms, n.v. 960–990 ms), reflecting initial tissue lipid accumulation. D, At histology (hematoxylin and eosin, $\times 200$), cardiomyocytes are intermittently enlarged because of cytoplasm vacuoles that, at electron microscopy, consist of myelin bodies (insert) and are focally (arrows) surrounded by CD3⁺ infiltrates (E) with cell necrosis. F, Correlation between MWT and CD3 count ($P=ns$) in all group 1 patients ($n=13$).

for left anterior descending artery, 43.6 ± 8.2 for circumflex artery, and 42.2 ± 8.7 for right coronary artery).

EMB was devoid of major complications. Two patients reported transient headache with visual disturbances, likely from brain microembolism following LV biopsy.

Histology and Electron Microscopy

In all patients, cardiomyocytes showed perinuclear and/or cytoplasmic vacuoles stained positively with periodic acid–Schiff and Sudan black and consisting, at electron microscopy, of myelin bodies (Figures 2 through 5, panel D).

Interstitial and replacement fibrosis was absent or mild in patients in groups 1 and 2, whereas it was pronounced in patients in groups 3 and 4. Inflammatory infiltrates consisting mainly of CD3⁺ T lymphocytes $>7/\text{mm}^2$ focally associated

with necrosis of adjacent glycolipid-laden myocytes were observed in 38% of group 1, 41% of group 2, 66% of group 3, and 72% of group 4 (Figures 2 through 5, panel E). The number of CD3⁺ cells was not correlated with enzyme activity, whereas it was weakly correlated with age ($P < 0.05$, Spearman $\rho = 0.3292$) and mainly with the extent of LV MWT at CMR ($P < 0.001$, Spearman $\rho = 0.6133$) globally and in groups 2 through 4 separately (Figures 2 through 5, panel F). In group 4 patients, myocarditis was associated with focal inflammatory infiltration of small coronary vessels (mostly capillaries and venules; Figure 6).

Molecular Studies

No viral genome was detectable in real-time polymerase chain reaction for any patients in groups 1 through 4.

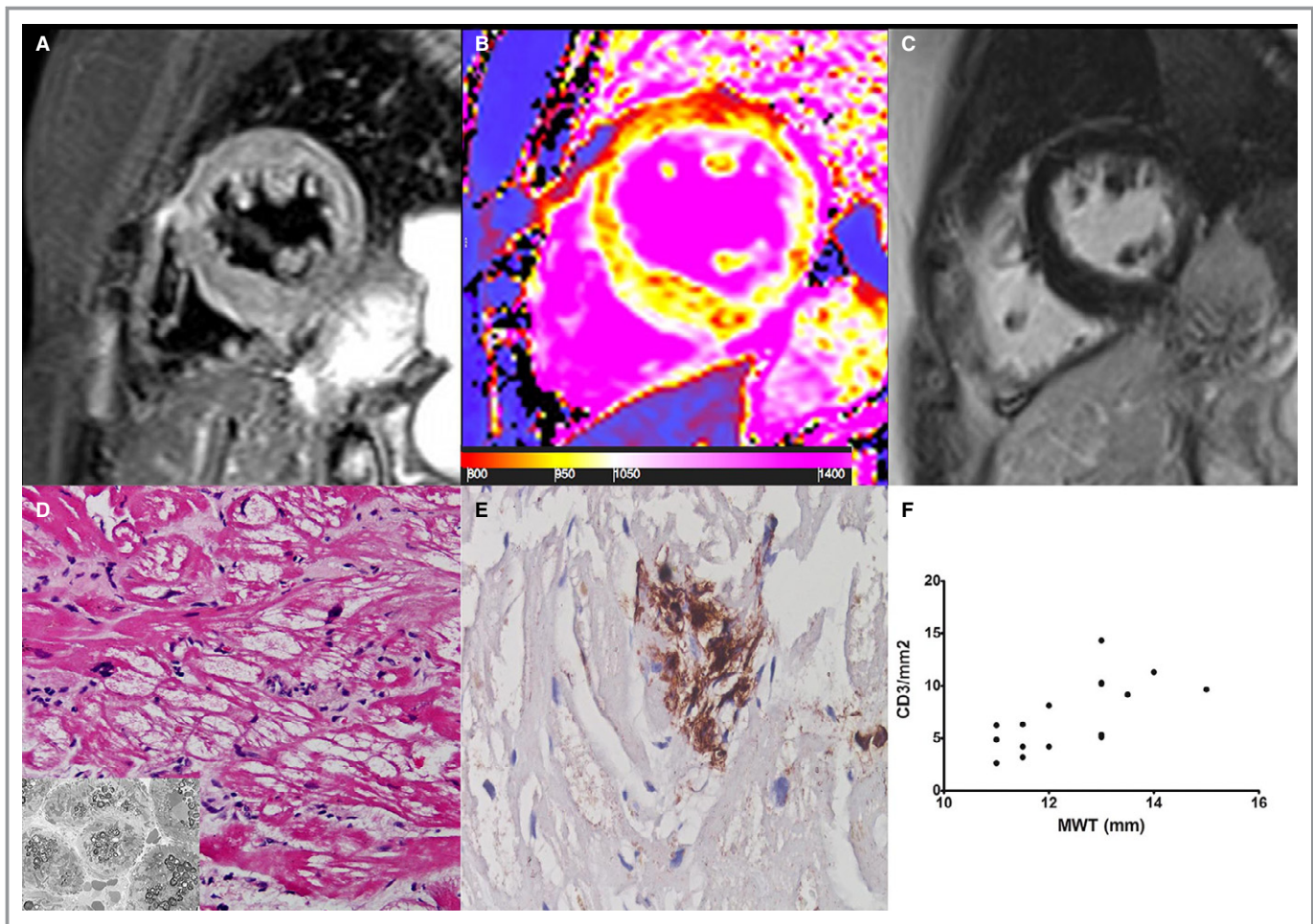


Figure 3. Group 2 patient. A 61-year-old woman with Fabry disease cardiomyopathy and mild hypertrophy (maximal wall thickness [MWT]: 14 mm). A T2-weighted short τ inversion recovery image (A) and a late gadolinium-enhanced image (C) do not show clear areas of myocardial edema or enhancement (T2 ratio: 1.7). Native T1 map (B) shows some patchy areas of focal reduction of T1 (red spots within septum and ventricular wall) with a global mild decrease in myocardial T1 value (946 ± 39 ms, n.v. 960–990 ms) as an expression of tissue accumulation of sphingolipids. D, At histology (hematoxylin and eosin, $\times 200$), cardiomyocytes are intermittently hypertrophied and vacuolated. Vacuoles, consisting of myelin bodies (insert), are focally damaged by $CD3^+$ inflammatory cells (E). F, Correlation between MWT and CD3 count ($P < 0.001$, $\rho = 0.70$) in all group 2 patients ($n = 17$).

Circulating Autoantibodies

Antiheart and antimyosin autoantibodies were detectable in all patients with myocarditis. Antiheart autoantibodies showed a partially organ-specific (or cross-reactive 1) pattern in all patients (increasing with severity; 38% of group 1, 41% of group 2, 67% of group 3, 72% of group 4), with a strongly positive fine striational pattern on human heart tissue and a weak positive fine striational pattern on human skeletal muscle¹⁹ (Figure 7). Antimyosin autoantibodies were documented in 38% of patients in prehypertrophic FDCM (group 1), suggesting an easy and sensitive marker for early assessment of myocarditis, particularly following the negative results of CMR. In patients with myocarditis, serum concentration of antimyosin autoantibodies correlated with the number of $CD3^+$ cells/mm² ($P < 0.001$, Spearman $\rho = 0.8476$).

Discussion

Accumulation of glycosphingolipids in Fabry cells is known to generate a proinflammatory response by the human immune system. In particular, self-glycosphingolipids, released in the systemic circulation by a constitutional secretory pathway, are recognized as antigens and are exposed by the CD1d molecule on dendritic antigen-presenting cells, which, under the action of TLR4 (Toll-like receptor 4), activate the invariant natural killer T cells to a humoral (including probably anti-glycosphingolipid antibodies) and cellular immune response.²⁰ What is poorly known is the incidence of tissue inflammation in the affected organs and the impact it may have on disease progression and responsiveness to ERT. The heart is a major target of FD, and its involvement strongly influences life expectancy that was reduced, before ERT introduction, to

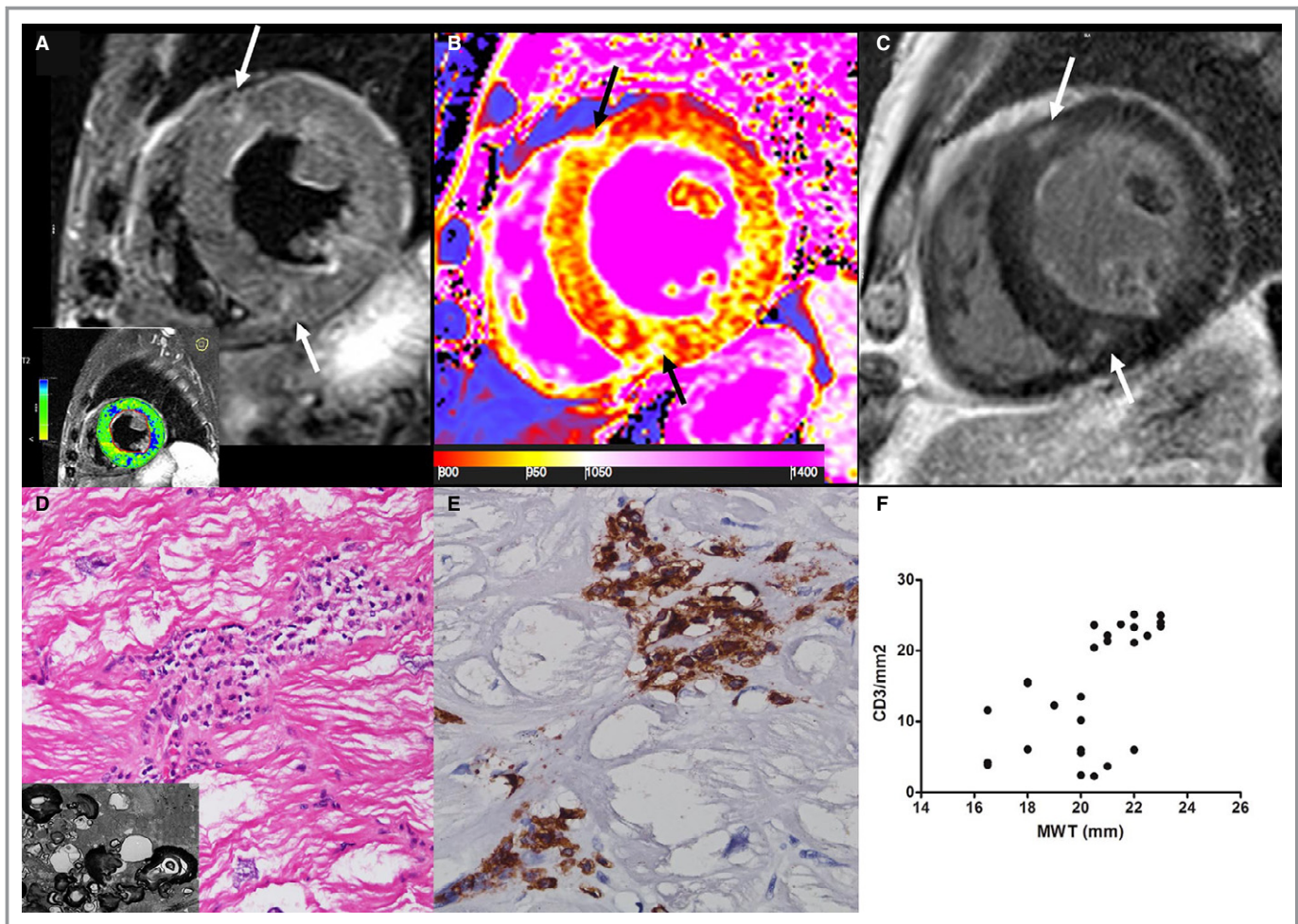


Figure 4. Group 3 patient. A 65-year-old man with Fabry disease cardiomyopathy and moderate cardiac hypertrophy (maximal wall thickness [MWT]: 19 mm). On a T2-weighted short τ inversion recovery image (A), some mesocardial foci (arrows) of myocardial edema are detectable at anterior and inferior interventricular junctions, matching enhanced areas (arrows) on a late gadolinium-enhanced image (C); analysis of T2-weighted myocardium-over-skeletal muscle signal intensity ratio reveals myocardial edema in the inferolateral wall (blue myocardium in the lower box is T2 ratio ≥ 2.0). B, A diffuse marked decrease of T1 value (septum: 834 ± 57 ms) is represented by a predominant red color in myocardium with areas of increase signal (1093–1170 ms) of fibrous replacement at interventricular insertions (black arrows). D, At histology (hematoxylin and eosin, $\times 200$), severely hypertrophied and vacuolated cardiomyocytes are surrounded by CD3⁺ inflammatory cells (D and E). Insert in D shows vacuoles consisting of glycolipid bodies. F, Correlation between MWT and CD3 count ($P < 0.001$, $\rho = 0.62$) in all group 3 patients ($n = 30$).

58.2 years for men and to 75.4 years for women.²¹ The impact of ERT on FDCM is still controversial because some studies show benefits from ERT administration in terms of relief,^{8–10} and others deny benefits, reporting an unaffected progressive trend.^{11,12} Most experts agree on evidence showing that early ERT administration, particularly in prehypertrophic FDCM (MWT < 11 mm), prevents disease progression, whereas the advanced form (MWT > 15 mm) appears to be irreversible.¹² The cause of FDCM resistance to ERT is unknown, although the expansion of myocardial interstitium and the advent of fibrosis are believed to play roles. In this regard, myocarditis may occur with interstitial widening through inflammatory cell infiltration, edema, and cell necrosis and may also be a source of myocardial fibrosis through

the activation of Smad and TGF- $\beta 1$ (transforming growth factor $\beta 1$). Interstitial expansion may then impair ERT pharmacokinetics, particularly through glycosphingolipids that may block and inactivate the infused enzyme with a basic pH, compromising its entrance into cardiomyocytes and lysosomal targeting.

Our study reports, for the first time, a high histological incidence (56%) of myocarditis in a large series of patients with FDCM undergoing EMB. The diagnosis followed the indications of Dallas criteria implemented by immunohistochemical characterization of inflammatory infiltrates.¹⁸ Notably, inflammatory cells were mostly CD3⁺ T lymphocytes $> 7 / \text{mm}^2$, and their increasing number correlated with degree of MWT, severity of cell necrosis, and serum antimyosin antibody

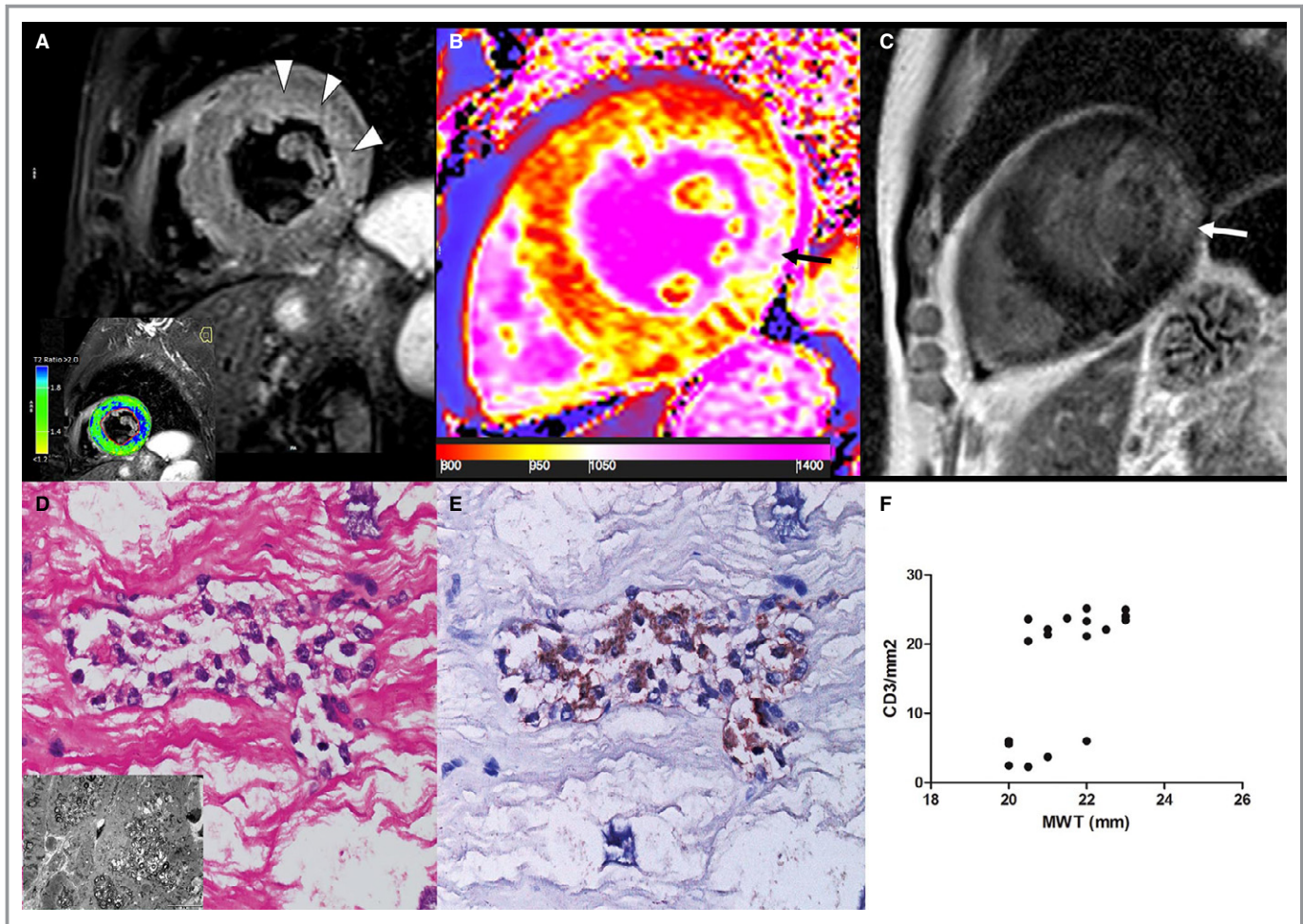


Figure 5. Group 4 patient. A 65-year-old man with Fabry disease cardiomyopathy (FDCM) and severe hypertrophy (maximal wall thickness [MWT]: 22 mm). A, T2-weighted short τ inversion recovery shows a diffuse hyperintense signal of subendocardial midwall layers of lateral wall (arrowheads), as detected by the comparison with skeletal muscle signal (blue color, T2 ratio ≥ 2.0), reflecting myocardial edema. Native T1 map (B) and a late gadolinium-enhanced (LGE) image (C) demonstrate a severe decrease of myocardial T1 (septum: 867 ± 42 ms), reflecting lipid accumulation and an LGE area at inferolateral wall (arrows), as a distinctive cardiac magnetic resonance hallmark of FDCM, corresponding to fibrous replacement (nT1: 1131 ± 64 ms). D, Inflammatory infiltrate (hematoxylin and eosin, $\times 200$), mainly of CD3+ lymphocytes (E), was associated with necrosis of adjacent glycolipid-laden myocytes. Insert in D shows vacuoles consisting of myelin bodies. F, Correlation between MWT and CD3 count ($P < 0.001$, $\rho = 0.67$) in all group 4 patients ($n = 18$).

titer. Specifically, myocarditis was detected in 38% of FDCM patients in the prehypertrophic phase, 41% with MWT of 11 to 15 mm, 66% with MWT between 16 and 20 mm, and 72% with MWT > 20 mm. This progressive inflammatory trend can be explained by the increasing amount of glycosphingolipids likely released by larger cardiomyocytes activating a parallel immune response and proportional immune-mediated myocardial damage. Release from damaged cardiomyocytes of segregated antigens such as myosin may contribute to enhancement and perpetuation of myocardial inflammation. Indeed, in our study, myocarditis was associated with negative polymerase chain reaction for viral genomes and positive antiheart and antimyosin, suggesting an immune-mediated mechanism of damage. Furthermore, the severity of myocarditis strictly correlated with the serum concentration of antimyosin

antibodies, which appeared to be a sensitive marker revealing the early phase of inflammation. In this regard, the consistent incidence (38%) of myocarditis in prehypertrophic FDCM patients suggests that presenting symptoms like chest pain and cardiac arrhythmias, often associated with increased serum troponin I, can be caused by an immunological response to glycosphingolipid exposition rather than to FD itself. Finally, the partially organ-specific pattern of autoantibodies detected in our patients suggests that, in addition to cardiomyocyte antigens like myosin, other non-organ-specific autoantigens, such as GB3, can be involved with a widespread autoimmune inflammatory reaction.

The presence of myocarditis in FDCM had a negative impact on the disease being associated with disturbing symptoms like chest pain and palpitations, occurrence of

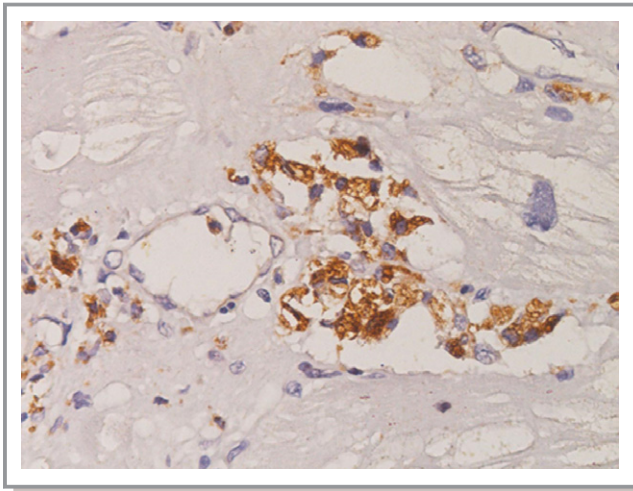


Figure 6. CD3⁺ T lymphocytes infiltrating myocardial capillaries in advanced (group 4) Fabry disease cardiomyopathy ($\times 200$ magnification, immunoperoxidase for T lymphocyte CD3 antigen).

arrhythmias at ECG, and detrimental biological features such as elevation of troponin I and increased cell necrosis. At CMR, myocardial inflammation was detected as a focal increase of myocardial signal on T2w-STIR images, reflecting tissue edema, in 31% of cases. Incidence of myocardial edema at T2w-STIR imaging was low in patients with MWT ≤ 15 mm but appreciable, reaching 50%, in those with MWT > 20 mm (ie, 0% in group 1, 29% in group 2, 43% in group 3, and 56% in group 4; $P < 0.05$ versus group 1).

The limited sensitivity of T2-weighted CMR imaging has been already reported in other clinical settings¹⁶ and explained by the low-resolution power of the technique and the variable contribution of cell necrosis to the expansion of interstitial space.

In addition, it is conceivable that the inflammation mechanism in FDCM may also involve the skeletal muscle²²; therefore, the resulting reduction of T2 myocardium-to-skeletal muscle SI ratio, which is commonly used to assess myocardial edema on CMR, may be an additional reason for underestimation. Conversely, the importance of CMR in detecting myocardial inflammation in FDCM has been raised recently.²³ Our report correlating CMR findings with histology and immunological profile confirms this observation, particularly for patients with MWT > 15 mm, and adds a new topic for recently published guidelines on hypertrophic cardiomyopathy.²⁴

Study Limitations

A limitation of this research was the small sample size; however, given the rarity of the disease, the study benefited from the possibility of analyzing cardiac biopsies from these patients. We acknowledge that the differences in age among the 4 groups might affect some of the comparisons of clinical

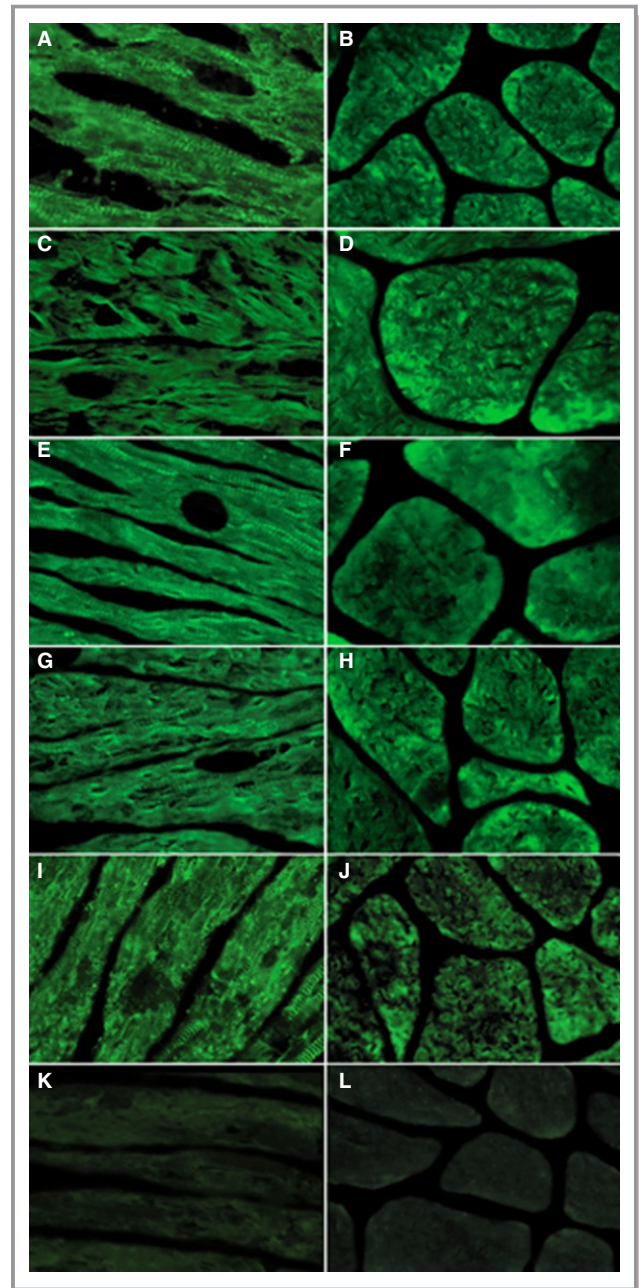


Figure 7. Antiheart autoantibodies in Fabry disease patients by indirect immunofluorescence. A, C, E and G, Strongly positive fine striational pattern of positivity on human heart tissue in sera from groups 1, 2, 3, and 4, respectively ($\times 400$). B, D, F and H, Weakly positive fine striational pattern on human skeletal muscle in sera from groups 1, 2, 3, and 4, respectively ($\times 400$), suggesting a partially organ-specific (or cross-reactive 1) pattern. I, Positive antiheart autoantibodies control serum on heart tissue ($\times 400$). J, Positive antiheart autoantibodies control serum on human skeletal muscle ($\times 400$). K, Negative antiheart autoantibodies control serum on human heart tissue ($\times 400$). L, Negative control serum on human skeletal muscle ($\times 400$).

CMR and histopathological measures, independent of LV wall thickness. Nevertheless, it is inherent to the progressive nature of the disease that clinical and histological severity

increases with age. A proper analysis that could account for age differences was not performed, given the small number of observations.

Perspectives

Clinicopathological evidence of myocarditis potentially contributing to disease progression and ERT resistance may change the therapeutic approach to FDCM. Immunosuppressive therapy (ie, a combination of prednisone with azathioprine¹⁷) or immunomodulating therapy (ie, immunoadsorption²⁵) can be associated with ERT in those FDCM patients with advanced disease (groups 3 and 4) and CMR and/or histological evidence of myocarditis and refractory to the conventional management. The impact of immunosuppression can be relieved with improvement of major symptoms like chest pain, dyspnea, and cardiac arrhythmias and with the decrease or disappearance of serum anti-myosin and anti-heart antibodies.

CMR can be a valuable tool for evaluation of inflammatory response to immunosuppression. Reduction of LV mass and improvement in diastolic and systolic dysfunction associated with edema reabsorption would suggest efficacy of immunosuppression and a major pathogenetic role of myocarditis in FDCM.

Finally, inflammation is believed to affect other organs with FD, including kidney,²⁶ vessels,²⁷ and brain.²⁸ Control of systemic inflammation in FD may result in the improvement of patient prognosis and quality of life.

Conclusions

Myocarditis is detectable at histology in up to 56% of patients with FDCM. It is immune mediated and correlates with disease severity. It can be disclosed by serum anti-heart or anti-myosin autoantibodies and, in the advanced stage, by CMR. It may contribute to disease progression and ERT resistance.

Sources of Funding

The study was supported by Shire International GmbH project number IIR-ITA-00169, “Myocardial Inflammation in Fabry Disease and the Mechanism of Therapeutical Responsiveness and/or Resistance to Enzyme Replacement Therapy” and Telethon Foundation project number GGP17055.

Disclosures

None.

References

- Desnick RJ, Ioannou YA, Eng CM. Alpha-galactosidase a deficiency: Fabry disease. In: Scriver CR, Beaudet AL, Sly WS, Valle D, eds. *The metabolic and molecular bases of inherited disease*. New York, NY: McGraw-Hall; 2001:3733–3774.
- Desnick RJ. Fabry's disease (α Galactosidase A Deficiency): an X-linked Nephropathy. In: Lifton R, Somlo S, Giebisch G, Seldin D, eds. *Genetic Diseases of the Kidney*. San Diego, CA: Elsevier Academic Press; 2009:597–616.
- Germain DP. Fabry disease. *Orphanet J Rare Dis*. 2010;5:1–49.
- Thurberg BL, Fallon JT, Mitchell R, Aretz T, Gordon RE, O'Callaghan MW. Cardiac microvascular pathology in Fabry disease: evaluation of endomyocardial biopsies before and after enzyme replacement therapy. *Circulation*. 2009;119:2561–2567.
- Najafian B, Savarstad E, Bostad L, Gubler MC, Tondel C, Whitley C, Mauer M. Progressive podocyte injury and globotriaosylceramide (GL-3) accumulation in young patients with Fabry disease. *Kidney Int*. 2011;79:663–670.
- Chimenti C, Morgante E, Tanzilli G, Mangieri E, Critelli G, Russo MA, Frustaci A. Angina in Fabry disease reflects coronary small vessel disease. *Circ Heart Fail*. 2008;1:161–169.
- von Scheidt W, Eng CM, Fitzmaurice TF, Erdmann E, Hubner G, Olsen EG, Christomanou H, Kandolf R, Bishop DF, Desnick RJ. An atypical variant of Fabry's disease with manifestations confined to the myocardium. *N Engl J Med*. 1991;324:395–399.
- Shiffmann R, Murray GJ, Treco D, Daniel P, Sellos-Moura M, Quirk JM, Zinzow GC, Borowski M, Loveday K, Anderson T, Gillespie F, Oliver KL, Jeffries NO, Doo E, Liang TJ, Kreps C, Gunter K, Frei K, Crutchfield K, Selden RF, Brady RO. Infusion of alphasgalactosidase A reduces tissue globotriaosylceramide storage in patients with Fabry disease. *Proc Natl Acad Sci USA*. 2000;97:365–370.
- Shiffmann R, Floeter MK, Dambrosia JM, Gupta S, Moore DF, Sharabi Y, Khurana RK, Brady RO. Enzyme replacement improves peripheral nerve and sweat function in Fabry disease. *Muscle Nerve*. 2003;28:703–710.
- Tondel C, Bostad L, Larsen K. Agalsidase benefits renal histology in young patients with Fabry disease. *J Am Soc Nephrol*. 2013;24:137–148.
- Rombach SM, Smid BE, Bouwman MG, Linthorst GE, Dijkgraaf MG, Hollak CE. Longterm enzyme replacement therapy for Fabry disease: effectiveness on kidney, heart and brain. *Orphanet J Rare Dis*. 2013;8:47.
- Weidemann F, Niemann M, Stork S, Breunig F, Beer M, Sommer C, Hermann S, Ertl G, Wanner C. Long-term outcome of enzyme replacement therapy in advanced Fabry disease: evidence for disease progression towards serious complications. *J Intern Med*. 2013;274:331–341.
- Pieroni M, Chimenti C, De Cobelli F, Morgante E, Gaudio C, Russo MA, Frustaci A. Fabry cardiomyopathy: echocardiographic detection of endomyocardial glycosphingolipids compartmentalization. *J Am Coll Cardiol*. 2006;47:1663–1671.
- Gibson CM, Cannon CP, Daley WL, Dodge JT, Alexander B, Marble SJ, McCabe CH, Raymond L, Fortin T, Poole WK, Braunwald E, for the TIMI 4 Study Group. TIMI Frame Count: a quantitative method of assessing coronary artery flow. *Circulation*. 1996;93:879–888.
- Friedrich MG, Sechtem U, Schulz-Menger J, Holmvang G, Alakija P, Cooper LT, White JA, Abdel-Aty H, Gutberlet M, Prasad S, Aletras A, Laissy JP, Paterson I, Filipchuk NG, Kumar A, Pauschinger M, Liu P. Cardiovascular magnetic resonance in myocarditis: a JACC White Paper. *J Am Coll Cardiol*. 2009;53:1475–1487.
- Liu S, Han J, Nacif MS, Jones J, Kawel N, Kellman P, Sibley CT, Bluemke DA. Diffuse myocardial fibrosis evaluation using cardiac magnetic resonance T1 mapping: sample size considerations for clinical trials. *J Cardiovasc Magn Reson*. 2012;14:90.
- Moon JC, Messroghli DR, Kellman P, Piechnik SK, Robson MD, Ugander M, Gatehouse PD, Arai AE, Friedrich MG, Neubauer S, Schulz-Menger J, Schelbert EB; Society for Cardiovascular Magnetic Resonance Imaging; Cardiovascular Magnetic Resonance Working Group of the European Society of Cardiology. Myocardial T1 mapping and extracellular volume quantification: a Society for Cardiovascular Magnetic Resonance (SCMR) and CMR Working Group of the European Society of Cardiology consensus statement. *J Cardiovasc Magn Reson*. 2013;15:92.
- Frustaci A, Chimenti C, Calabrese F, Pieroni M, Thiene G, Maseri A. Immunosuppressive therapy for active lymphocytic myocarditis: virological and immunologic profile of responders versus nonresponders. *Circulation*. 2003;107:857–863.
- Caforio AL, Goldman JH, Baig MK, Keeling PJ, Bottazzo GF, McKenna WJ. Organspecific cardiac autoantibodies in dilated cardiomyopathy—an update. *Eur Heart J*. 1995;16 suppl O:68–70.
- Mauhin W, Lidove O, Masat E, Mingozzi F, Mariampillai K, Ziza JM, Benveniste O. Innate and adaptive immune response in Fabry disease. *J Inher Metab Dis*. 2015;22:1–10.

21. Waldek S, Patel MR, Banikazemi M, Lemay R, Lee P. Life expectancy and cause of death in males and females with Fabry disease: findings from the Fabry registry. *Genet Med*. 2009;11:790–796.
22. Chimenti C, Padua L, Pazzaglia C, Morgante E, Centurion C, Antuzzi D, Russo MA, Frustaci A. Cardiac and skeletal myopathy in Fabry disease: a clinicopathologic correlative study. *Hum Pathol*. 2012;43:1444–1452.
23. Nordin S, Kozor R, Bulluck H, Castelletti S, Rosmini S, Abdel-Gadir A, Baig S, Mehta A, Hughes D, Moon JC. Cardiac Fabry disease with late gadolinium enhancement is a chronic inflammatory cardiomyopathy. *J Am Coll Cardiol*. 2016;68:1707–1708.
24. Elliott PM, Anastasakis A, Borger MA, Borggrefe M, Cecchi F, Charron P, Hagege AA, Lafont A, Limongelli G, Mahrholdt H, McKenna WJ, Mogensen J, Nihoyannopoulos P, Nistri S, Pieper PG, Pieske B, Rapezzi C, Rutten FH, Tillmanns C, Watkins H. 2014 ESC Guidelines on diagnosis and management of hypertrophic cardiomyopathy: the Task Force for the Diagnosis and Management of Hypertrophic Cardiomyopathy of the European Society of Cardiology (ESC). *Eur Heart J*. 2014;35:2733–2779.
25. Felix SB, Beug D, Dörr M. Immunoabsorption therapy in dilated cardiomyopathy. *Expert Rev Cardiovasc Ther*. 2015 Feb;13:145–152.
26. Barbey F, Lidove O, Schwarting A. Fabry nephropathy: 5 years of enzyme replacement therapy- a short review. *NDT Plus*. 2008;1:11–19.
27. Rombach SM, Twickler TB, Aerts JM, Linthorst GE, Wijburg FA, Hollak CE. Vasculopathy in patients with Fabry disease: current controversies and research directions. *Mol Genet Metab*. 2010;99:99–108.
28. De Francesco PN, Mucci JM, Ceci R, Fossati CA, Rozenfeld PA. Fabry disease peripheral blood immune cells release inflammatory cytokines: role of globotriaosylceramide. *Mol Genet Metab*. 2013;109:93–99.