


CONTEMPORARY REVIEW

Clinical Potential of Targeting Fibroblast Growth Factor-23 and α Klotho in the Treatment of Uremic Cardiomyopathy

Jonathan P. Law, MBChB; Anna M. Price, MBChB; Luke Pickup, MBChB; Ashwin Radhakrishnan, BM; Chris Weston, BSc, PhD; Alan M. Jones, BSc, PhD; Helen M. McGettrick, BSc, MSc, PhD; Winnie Chua, BA, PhD; Richard P. Steeds, MD; Larissa Fabritz, MD; Paulus Kirchhof, MD; Davor Pavlovic, BSc, DPhil*; Jonathan N. Townend, MD*; Charles J. Ferro , MD*

ABSTRACT: Chronic kidney disease is highly prevalent, affecting 10% to 15% of the adult population worldwide and is associated with increased cardiovascular morbidity and mortality. As chronic kidney disease worsens, a unique cardiovascular phenotype develops characterized by heart muscle disease, increased arterial stiffness, atherosclerosis, and hypertension. Cardiovascular risk is multifaceted, but most cardiovascular deaths in patients with advanced chronic kidney disease are caused by heart failure and sudden cardiac death. While the exact drivers of these deaths are unknown, they are believed to be caused by uremic cardiomyopathy: a specific pattern of myocardial hypertrophy, fibrosis, with both diastolic and systolic dysfunction. Although the pathogenesis of uremic cardiomyopathy is likely to be multifactorial, accumulating evidence suggests increased production of fibroblast growth factor-23 and α Klotho deficiency as potential major drivers of cardiac remodeling in patients with uremic cardiomyopathy. In this article we review the increasing understanding of the physiology and clinical aspects of uremic cardiomyopathy and the rapidly increasing knowledge of the biology of both fibroblast growth factor-23 and α Klotho. Finally, we discuss how dissection of these pathological processes is aiding the development of therapeutic options, including small molecules and antibodies, directly aimed at improving the cardiovascular outcomes of patients with chronic kidney disease and end-stage renal disease.

Key Words: α Klotho ■ cardiorenal syndrome ■ FGF23 ■ fibroblast growth factor ■ growth factor ■ kidney ■ treatment

Chronic kidney disease (CKD) and end-stage renal disease (ESRD) requiring dialysis are complex, chronic conditions with a combined prevalence of 10% to 15% of the adult population worldwide.^{1–3} Cardiovascular events and mortality increase exponentially with reduced estimated glomerular filtration rate (eGFR) independent of age, sex, and other risk factors.^{4–6} In the early stages of CKD, the risks of occlusive atheromatous disease are increased and account for the majority of cardiovascular events observed.⁷ Arterial atheroma remains an important modifiable pathophysiological process in CKD, as

evidenced by trials in early CKD showing benefit from lipid-lowering therapies in modifying the risk of atherosclerotic events.^{8–10} However, the same treatments appear much less effective in patients with advanced stages of CKD, including ESRD.^{10–12} As CKD worsens, there is a shift from atherosclerotic complications to morbidity due to heart failure and sudden cardiac death (SCD).^{7,13,14} Atrial fibrillation (AF) is also common, detected in up to 41% of patients requiring hemodialysis.¹⁴ The pathophysiological basis of these events is a unique cardiovascular phenotype consisting primarily of the development of uremic cardiomyopathy with

Correspondence to: Charles J. Ferro, MD, Department of Nephrology, Queen Elizabeth Hospital Birmingham, Mindelsohn Way, Edgbaston, Birmingham B15 2WB, United Kingdom. E-mail: charles.ferro@uhb.nhs.uk

*Dr Pavlovic, Prof Townend, and Prof Ferro share senior authorship.

For Sources of Funding and Disclosures, see page 10.

© 2020 The Authors. Published on behalf of the American Heart Association, Inc., by Wiley. This is an open access article under the terms of the Creative Commons Attribution License, which permits use, distribution and reproduction in any medium, provided the original work is properly cited.

JAHA is available at: www.ahajournals.org/journal/jaha

Nonstandard Abbreviations and Acronyms

AF	atrial fibrillation
ESRD	end-stage renal disease
FGF23	fibroblast growth factor 23
LV	left ventricular
LVH	left ventricular hypertrophy
SCD	sudden cardiac death

associated increased arterial stiffness and widespread atheroma.

The purpose of this article is to review the current state of the art on 2 newly postulated drivers of uremic cardiomyopathy, elevated circulating fibroblast growth factor-23 (FGF23) and reduced α Klotho, and discuss how recent insights into the pathophysiological processes has led to development of potential therapeutic options aimed at reducing the cardiovascular risk of patients with CKD/ESRD.

UREMIC CARDIOMYOPATHY

The term uremic cardiomyopathy arose in the 1980s with reports of common abnormalities in cardiac function and structure in patients with CKD/ESRD, including increased left ventricular (LV) mass and left ventricular hypertrophy (LVH); diastolic and systolic dysfunction; as well as profound myocardial fibrosis on histology.^{15–20} Uremic cardiomyopathy has been linked to conditions causing both heart failure and CKD, especially hypertension. Chronic stimulation of cardiac cells by renin, angiotensin, parathyroid hormone (PTH), cardiotonic steroids, and other uremic toxins, has also been proposed.²⁰ The severity of uremic cardiomyopathy as measured by LV mass is a powerful predictor of cardiovascular mortality probably as a result of the factors discussed below.

Increased LV Mass and Hypertrophy

Increased LV mass and LVH are common manifestations of uremic cardiomyopathy. Forty percent of patients with an eGFR <30 mL/min per 1.73 m² have LVH on echocardiography,²¹ increasing to \approx 80% in ESRD.^{22,23} In patients with CKD/ESRD, LVH is strongly associated with death; diastolic and systolic heart failure; and cardiac arrhythmias.^{22,23} However, LV mass is a continuous variable, with a graded relationship with adverse cardiovascular outcomes.^{24–28} It is also important to emphasize that cardiac structural changes occur early in the course of CKD, with a linear association between worsening renal function and a higher prevalence of LVH.^{29,30} While elevated blood pressure is an important determinant of LV mass,³¹ evidence

from both animal and human studies supports the presence of mechanisms that are independent of pressure overload and hypertension in driving cardiac hypertrophy in CKD/ESRD.^{32–36}

Diastolic and Systolic Dysfunction

Diastolic dysfunction is highly prevalent in patients with CKD, with over two thirds affected in CKD stages 2 to 4³⁰ and up to 85% in ESRD.³⁷ Diastolic dysfunction is strongly associated with increased LV mass and LVH,⁷ as well as myocardial fibrosis,^{20,38} and correlates with increased mortality.^{37,38} Furthermore, the presence of diastolic dysfunction is considered to be a major cause for the frequent presentation of hemodialysis patients with pulmonary edema or intradialytic hypotension, despite only minor changes in fluid status.^{7,38}

Overt LV systolic dysfunction, as manifested by reduced ejection fraction, is uncommon in predialysis CKD with a reported prevalence of 8% and no association with eGFR.^{17,30} However, several studies using echocardiography have shown changes in LV deformation in early stages of CKD, indicating the presence of subnormal LV systolic function.^{39–41} In ESRD, LV systolic dysfunction is very common, with a reported prevalence 10 to 30 times greater than in the general population.^{42,43}

Myocardial Fibrosis

It has been suggested that increased interstitial myocardial fibrosis may be the unifying pathophysiological process underlying uremic cardiomyopathy.⁴⁴ In the 1990s, a postmortem study found that myocardial fibrosis was present in 91% of CKD/ESRD patients without significant flow-limiting coronary lesions. The severity of fibrosis was related to the length of time on dialysis, but independent of hypertension, blood pressure, diabetes mellitus, or anemia.¹⁵ Over a decade later, Aoki et al.¹⁶ performed endocardial biopsies in 40 ESRD patients with reduced LV ejection fraction without coronary artery disease. The predominant pathologic findings were extensive interstitial fibrosis and cardiomyocyte hypertrophy and disarray.

Studying myocardial fibrosis in CKD/ESRD has been challenging given that myocardial biopsies are not without risk, especially in multimorbid patients and therefore are not always clinically and ethically justified.^{45,46} Late gadolinium enhancement cardiac magnetic resonance imaging, a validated noninvasive method, allows in vivo quantification of myocardial fibrosis in conditions such as myocardial infarction,⁴⁷ dilated⁴⁸ and hypertrophic cardiomyopathies.⁴⁹ This technique has also been used to characterize myocardial tissue in patients with ESRD demonstrating midwall patterns of late gadolinium enhancement consistent with replacement myocardial

fibrosis not associated with large vessel coronary artery disease.¹⁷ Noncontrast myocardial native T1 relaxation time, or T1 mapping, has emerged as a novel viable technique to quantify diffuse interstitial myocardial fibrosis in CKD/ESRD⁵⁰ correlating with histological interstitial fibrosis in a number of disease states, including cardiomyopathy and valvular disease.⁵¹ Indeed, native T1 times are increased in early CKD,¹⁹ increasing with worsening CKD stages⁵² and correlates with increased LV mass.^{18,53} Native T1 mapping offers an exciting opportunity to investigate novel mechanisms of cardiac fibrosis (eg, FGF23-mediated changes), in patients with CKD and in animal models.

FIBROBLAST GROWTH FACTOR-23 AND α KLOTHO

The hormone FGF23, first discovered in 2000, is a circulating growth factor secreted by osteocytes whose main physiological role is to increase urinary phosphate excretion.^{54,55} The 4 mammalian FGF receptors (FGFR1-4) are membrane-bound receptor tyrosine kinases.^{56,57} FGFR1 is suggested to be the primary FGF23 receptor in target organs—the kidneys and parathyroid glands.^{58–61} Crystallography studies clearly demonstrate that the presence of α Klotho is required for the efficient binding of FGF23 to FGFR1.⁶² α Klotho is a cell-surface protein, mainly expressed in the kidneys and parathyroid glands.^{63–65} In addition to the membrane-associated full-length protein, the ectodomain of α Klotho can exist in a soluble form.^{66–69} In the presence of membrane-bound α Klotho or soluble α Klotho, FGF23 can activate Fibroblast Growth Factor Receptor Substrate-2 (FRS2 α)/Ras/Mitogen-Activated Protein Kinase signaling (Figure 1).^{62,70,71} Soluble α Klotho, therefore, may act as a circulating FGF23 coreceptor in cells that do not express α Klotho. Such a mechanism has been reported in osteoblasts.⁷² However, its role in the heart is yet to be fully characterized as neither cardiomyocytes nor cardiac fibroblasts express α Klotho.⁵⁵ It is possible that FGF23 might act on these cells with circulating α Klotho as a cofactor. Treatment of cardiac myofibroblasts with full-length α Klotho resulted in upregulated proliferation and ERK phosphorylation, which was suppressed by FGFR1 antagonism.⁷³ This suggests the presence of FGFR1 in cardiac myofibroblasts for which soluble Klotho acts as a circulating co-receptor, although the authors did not comment on endogenous FGFR1/FGF23 expression.

FGF23 can also exert cellular effects via α Klotho-independent mechanisms.⁷⁴ FGF23 has been shown to stimulate phospholipase C γ (PLC γ)/calcineurin/nuclear factor of activated T-cells (NFAT) via FGFR4 in cells that lack α Klotho (Figure 1).^{74–77} Such increases

in PLC γ /calcineurin/NFAT signaling appear to be important in pathological, as opposed to physiological, cardiac hypertrophy.^{78,79} Clearly further mechanistic studies are warranted to delineate mechanisms that can be targeted therapeutically in patients with elevated FGF23 levels.

FGF23, α KLOTHO, AND KIDNEY DISEASE

One of the first clinically detectable signs of CKD is an elevation in serum FGF23, probably in response to increased extracellular phosphate, although the details of the stimulus and its detection are still unclear, with levels rising steeply as kidney function worsens^{54,80} (Figure 2). Indeed, elevations are observed as early as eGFR 75 mL/min per 1.73 m², long before increased concentrations in PTH or phosphate are observed.⁸⁰ Circulating FGF23 levels are 2- to 5-fold above the normal range in early/intermediate CKD, but can reach levels of 1000-fold above normal in ESRD.^{80–82} Increased FGF23 levels are also found in heart failure^{83–88} and AF,^{89–93} and are associated with all-cause and cardiovascular mortality in patients with and without CKD.^{87,88,94–99} Ongoing research therefore explores FGF23 as both a potential biomarker¹⁰⁰ and a causative factor for cardiac mechano-electrical dysfunction. However, effective quantification of circulating FGF23 is not currently standardized. Several FGF23 assay kits utilize differing detection techniques, epitope binding regions, analytical ranges and measurement units, making direct comparisons challenging.¹⁰¹

The kidney is the principal source of circulating soluble α Klotho.^{69,102} Its levels are downregulated in the presence of albuminuria,¹⁰³ inflammation,¹⁰⁴ and with the progression of CKD. α Klotho levels start to decline in CKD stage 2 and precede the elevation of FGF23, PTH, and serum phosphate.¹⁰⁵ Low levels of circulating α Klotho are associated with increased cardiovascular events and mortality in patients with CKD/ESRD.^{106–109} It is, therefore, conceivable that some of the adverse physiological effects that have been attributed to increased FGF23 may be either caused by, or compounded by, lower α Klotho (Figure 2). These mechanistic complexities require further investigation and need to be considered when developing FGF23/ α Klotho-directed therapies.

FGF23, α KLOTHO, AND LEFT VENTRICULAR MASS/HYPERTROPHY

The heart has been shown to respond to FGF23, increasing LV mass independently of blood pressure,

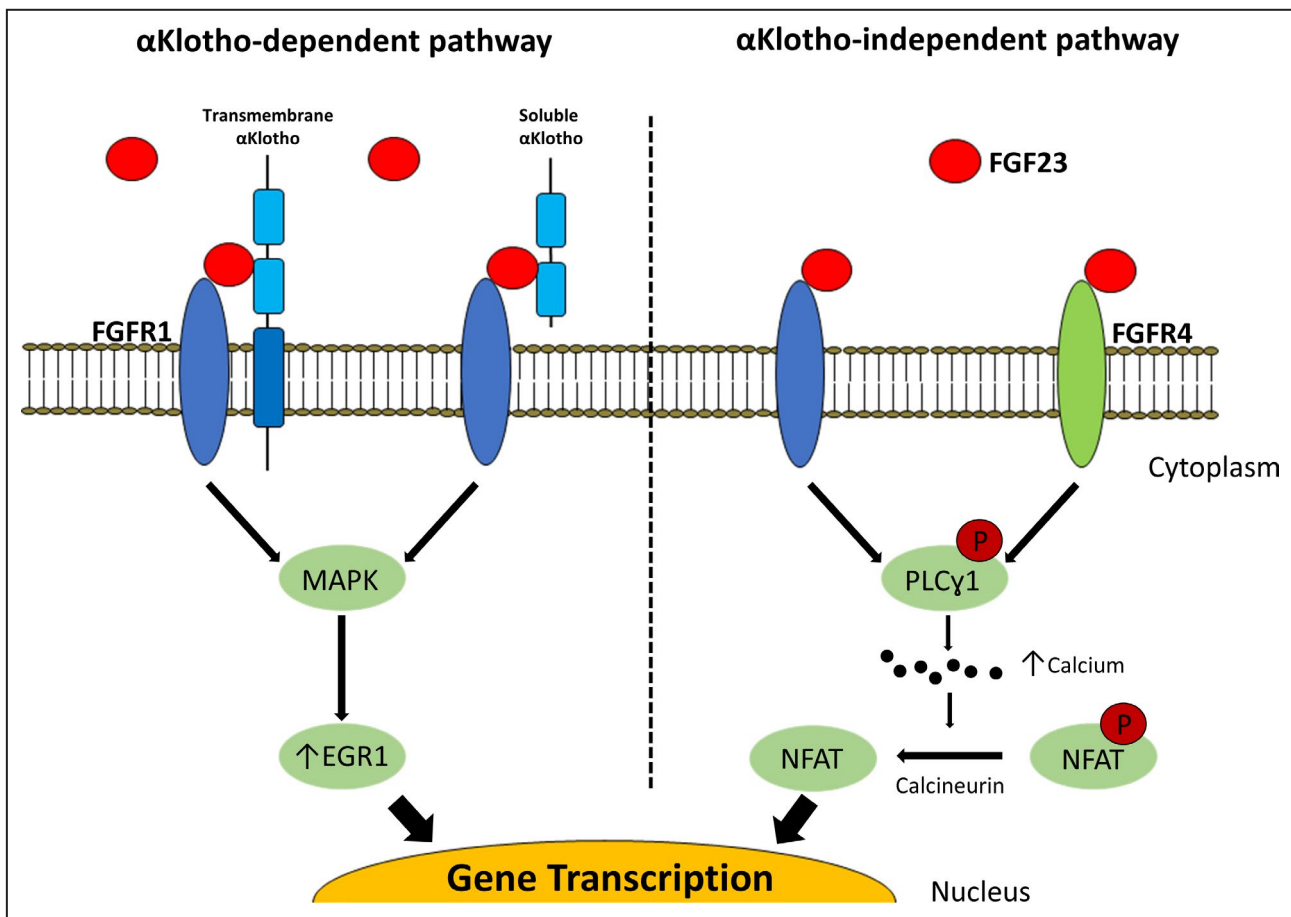


Figure 1. Potential mechanisms of fibroblast growth factor-23 (FGF23) signal transduction and signaling pathways.

Fibroblast growth factor-23 (FGF23) acts on cells that constitutively express fibroblast growth factor receptor-1 (FGFR1) and its coreceptor α Klotho. In cells that do not constitutively express α Klotho, such as cardiac myocytes and fibroblasts, circulating α Klotho is thought to perform a role similar to membrane-bound α Klotho. Circulating FGF23 can also bind to other FGFR1 and other FGFR independently of α Klotho. In cardiac myocytes, this is thought to be FGFR4 predominantly. The binding of FGF23 to an FGFR1- α Klotho complex activates MAPK (mitogen-activated protein kinase), upregulating early growth response protein-1 (EGR1), thereby modulating physiological gene expression. In the absence of α Klotho, FGF23 binding to either FGFR1 or FGFR4 activates phospholipase γ 1 (PLC γ 1), increasing intracellular calcium. This in turn activates calcineurin to dephosphorylate (P, in red) nuclear factor of activated T-cells (NFAT), which induces pathophysiological gene transcription.

promoting cardiac fibrosis and reducing LV systolic function in animal models.^{74,75,77,110,111} Elevations of cardiac FGFR4 and enhanced PLC γ /calcineurin/NFAT signaling have been observed in both animal models of CKD and in patients with CKD/ESRD.^{75,112–114} Several studies have shown that repetitive administration of FGF23 in wild-type mice, either intravenous or intraperitoneal, induced cardiac hypertrophy within 5 days.^{74,110,111} The signaling actions of FGF23 on the heart are still not fully characterized. However, several independent experimental approaches demonstrate the involvement of the α Klotho-independent FGFR4-PLC γ /calcineurin/NFAT signaling pathway in cardiomyocytes.^{74,75,77} On the other hand, independent studies demonstrate that α Klotho may be cardioprotective and that subnormal levels may be required for FGF23 to induce LVH.^{115–118} Although many of the studies indicate

that elevation of FGF23 and reduction in α Klotho are involved in the development of LVH, recent studies by Leifheit-Nestler and Slavic have not recapitulated these findings.^{119,120} Chronic FGF23 overexpression (via myocardial gene transfer), or genetic ablation of FGF23 or α Klotho on the background of transverse aortic constriction did not affect cardiac function or morphology.^{119,120}

FIBROBLAST GROWTH FACTOR-23, α KLOTHO, AND MYOCARDIAL FIBROSIS

Every third to fourth cell in the heart is a fibroblast. Fibroblasts produce the extracellular matrix in the heart and act as regulators of the cardiac interstitium.^{121,122} In the injured myocardium, inflammation and

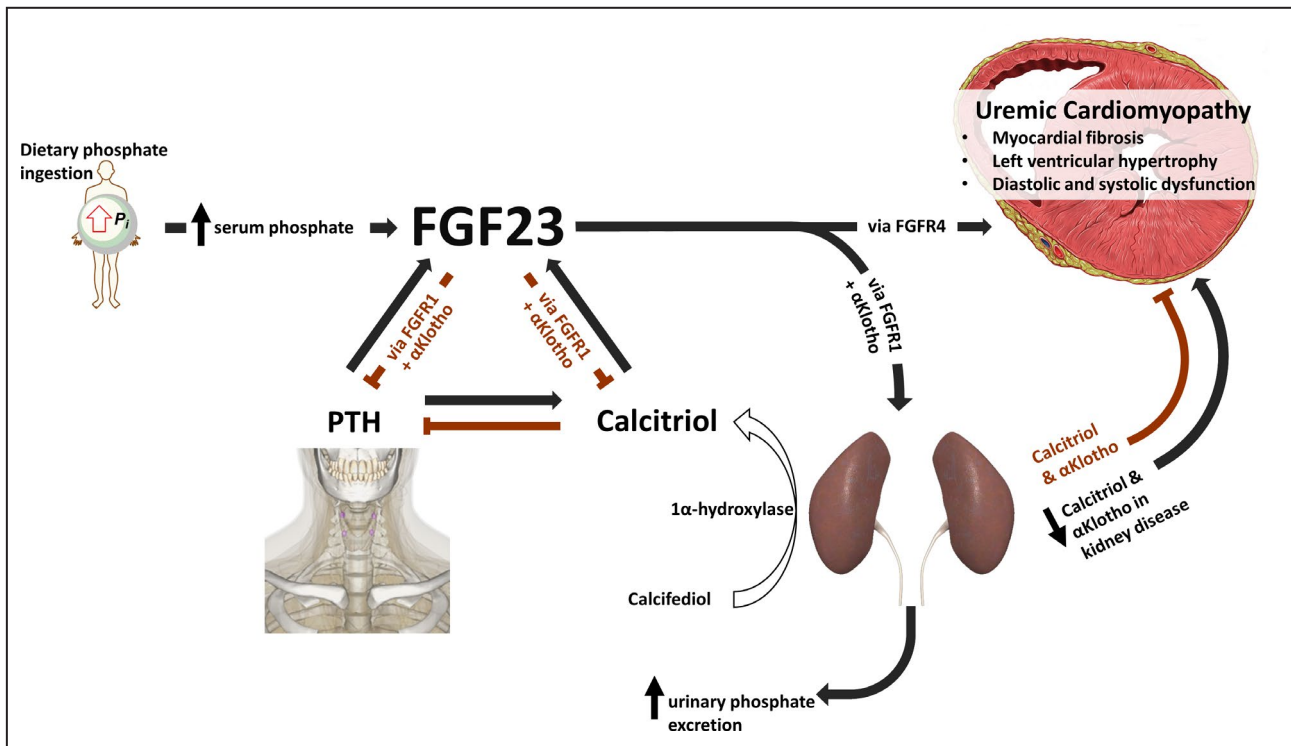


Figure 2. Dynamic interplay of fibroblast growth factor-23- α Klotho axis.

Dietary phosphate (Pi) ingestion and absorption leads to osteocytes secreting fibroblast growth factor-23 (FGF23). It is not clear how osteocytes detect circulating phosphate, but the sensing of calciprotein particles (nanoparticles consisting of calcium, phosphate, and fetuin A) has been proposed as a potential mechanism. Increased FGF23 leads to increased phosphate excretion by downregulating sodium-dependent phosphate cotransporter IIa/c, via mitogen-activated protein kinase signaling, in the renal proximal tubules expressing FGF-receptor 1 (FGFR1) in an α Klotho-dependent manner. In addition, FGF23 lowers renal vitamin D hydroxylation and decreases parathyroid hormone (PTH) secretion, both actions also being α Klotho-dependent, reducing calcium entry into the circulation. In the context of reducing renal function, FGF23 production increases to compensate for reduced renal phosphate excretion, decreased activated vitamin D levels, and rising PTH secretion. High levels of circulating FGF23 have been implicated in the development of uremic cardiomyopathy through α Klotho-independent mechanisms via either the FGFR1 or, more likely, FGFR4. Circulating α Klotho may mitigate some of the pathophysiological actions of FGF23 on the myocardium. However, the kidneys are the main source of circulating α Klotho and levels decrease with reducing renal function.

mechanical stress promote activation of fibroblasts to myofibroblasts, leading to maladaptive deposition of extensively cross-linked extracellular matrix, which drives increased stiffness and impaired mechano-electrical coupling of cardiomyocytes. This loss of cardiomyocyte coupling not only leads to attenuated cardiac function, but also provides a substrate for arrhythmias.^{123–126} Although recent studies have shown that FGF23 can activate cardiac fibroblasts, neither the underlying mechanism^{127,128} nor its role in the development of cardiac fibrosis are fully defined.^{127,129} As cardiac fibroblasts do not express α Klotho,^{74,102,113,114} the alternative pathway of α Klotho-independent FGF23 signaling through FGFR4-PLC γ /calcineurin/NFAT is likely to play a role (Figure 1). Future studies are required to examine which FGF receptors are expressed in cardiac fibroblasts, whether FGF23 contributes to cardiac fibrosis, and whether these mechanisms are dependent on α Klotho.

FGF23, α KLOTHO, AND CARDIAC ARRHYTHMIAS

Patients with CKD/ESRD are at increased risk of a wide spectrum of cardiac arrhythmias, including supraventricular tachycardias, particularly AF, and potentially lethal ventricular arrhythmias.^{14,130,131} All 3 components of uremic cardiomyopathy (increased LV mass/LVH; diastolic and systolic dysfunction; and especially myocardial fibrosis) are associated with arrhythmogenesis.^{131,132} While emerging evidence from implantable loop recorder studies is beginning to implicate bradyarrhythmias as the major cause of SCD in ESRD, rather than the previously assumed tachyarrhythmias, the precise causes of SCD in ESRD are the subject of investigation.¹⁴ α Klotho has been found in sinoatrial node pacemaker cells in mice¹³³ and α Klotho-deficient animals exhibit sinoatrial node dysfunction, and higher rates of bradyarrhythmias and SCD.¹³³

FGF23 disrupts intracellular calcium cycling within the cardiomyocyte, which is an important risk factor for arrhythmogenesis.^{134–136} Administration of FGF23 to rat ventricular cardiomyocytes caused calmodulin-dependent protein kinase II-dependent aberrant intracellular calcium, resulting in *in vitro* and *in vivo* arrhythmogenicity.¹³⁷ Administration of recombinant α Klotho or a pan-FGFR blocker prevented contractile dysfunction and reduced pro-arrhythmogenic activity.¹³⁷

Large observational studies in patients with CKD or AF and in the general population have found an association between elevated FGF23 and increased risk of developing AF.^{89,138} High FGF23 and low α Klotho levels are associated with periods of AF in patients with paroxysmal or persistent AF.⁹¹ Increased expression of FGF23, FGFR4 mRNA, and FGFR4 protein in the right atrial appendages of patients with AF has been reported and positively correlate with atrial collagen fraction. Collectively these data/studies suggest that FGF23/FGFR4 may play a role in promoting AF through atrial fibrosis.¹³⁹

REVERSING OR PREVENTING UREMIC CARDIOMYOPATHY BY TARGETING THE FGF23 AND α KLOTHO AXIS

Several therapies exist that directly or indirectly target FGF23, α Klotho, and abnormalities in bone metabolism. These are reviewed below and summarized in Table.

Targeting Phosphate Levels in the Body

Studies in healthy subjects have shown that circulating FGF23 levels are associated with dietary phosphate intake levels,^{140,141} and can be further increased by acute phosphate loading.¹⁴² This can be reduced, in the short-term, by aggressive reduction of dietary phosphate absorption^{141,143–146} and restriction.¹⁴⁷ Overall, in relatively short-term studies, noncalcium-based phosphate binders lower FGF23 in patients with CKD/ESRD, whereas calcium-based binders do not.^{148–152} Calcium is thought to be a secondary stimulus for FGF23 synthesis.^{153,154} However, lowering intestinal phosphate absorption with dietary change, phosphate binders, nicotinamide,¹⁵⁵ tenapanor,^{156–158} or combination therapy¹⁵⁹ produces only modest decreases in FGF23 that do not appear to be sustained in the long term.^{150,159} Whether this is because of increased total intestinal phosphate absorption by active phosphate transport,^{160–162} high pill burden, or intolerability of the medications is unknown.

Targeting Vitamin D

There is strong experimental data supporting vitamin D as a potential treatment for FGF23-mediated uremic cardiomyopathy. Calcitriol, the synthetic analogue of

vitamin D₃, blocks FGF23-induced activation of FGFR4 and cardiomyocyte growth.¹¹⁴ Increases in FGF23 expression, FGFR4-induced calcineurin/NFAT signaling, and LVH in 5/6 nephrectomized rats are reduced by calcitriol.¹¹⁴ Vitamin D also increases α Klotho expression.^{163,164} Observational studies demonstrate a survival advantage of vitamin D therapy in patients with CKD/ESRD despite raising calcium and phosphate levels.^{165,166} However, in a randomized, placebo-controlled study in patients with CKD stages 4 to 5, paricalcitol (activated vitamin D₂ analogue) treatment did not reduce LV mass.¹⁶⁷ Taken together, these data suggest combining vitamin D receptor activation with FGF23/FGFR4 signaling blockade could have beneficial synergistic actions on uremic cardiomyopathy.

Targeting Parathyroid Hormone

In patients on dialysis, the clinically available allosteric modulators (calcimimetics) of the calcium-sensing receptor, cinacalcet and etelcalcetide, are used to treat hyperparathyroidism and consistently lower circulating FGF23.^{168–172} In secondary analyses of the large and well-designed EVOLVE (Evaluation of Cinacalcet HCl Therapy to Lower Cardiovascular Events) trial, a >30% reduction in FGF23 in patients randomized to cinacalcet was associated with a reduction in cardiovascular mortality, SCD, and admissions for heart failure. The findings were amplified in those with a >50% reduction in FGF23.⁸⁷

In CKD patients not requiring dialysis, randomized-controlled trials of cinacalcet have reported significant reductions in FGF23, but also poor suppression of PTH as well as high rates of hypocalcemia and hyperphosphatemia.^{173,174} These actions are thought to negate many of the clinical benefits of calcimimetics and these agents are not licensed for use in patients with non-end-stage CKD. Nevertheless, cinacalcet remains a promising therapeutic option for the treatment of uremic cardiomyopathy in ESRD.

Other Indirect Targets

Intensified dialysis treatment,¹⁷⁵ renal transplantation,¹⁷⁶ reduced inflammation,^{147,177,178} and treatment of iron deficiency^{152,178–180} all reduce circulating FGF23 levels. Angiotensin-receptor antagonists,¹⁸¹ statins,¹⁸² peroxisome proliferator-activated receptor gamma agonists,¹⁸³ and exercise^{184,185} all increase α Klotho expression. The clear indications for these treatments remain and may well continue to give further insights into the pathophysiology of FGF23, but it is unlikely that these interventions will be used to directly target FGF23 and α Klotho.

DIRECTLY TARGETING FGF23

The mechanism(s) regulating FGF23 synthesis are poorly understood and no “phosphate-sensor” has

Table. Potential Therapies for Reversing or Preventing Uremic Cardiomyopathy by Targeting the Fibroblast Growth Factor-23 and α Klotho Axis

Treatment	Study	Species	CKD Status	Outcome
Targeting phosphate				
Dietary phosphate restriction	Burnett et al ¹⁴¹	Human	No renal impairment	Reduction in serum FGF23
	Antoniucci et al ¹⁴³	Human	No renal impairment	
	Moe et al ¹⁴⁴	Human	CKD Stage 3B to 4	
	Di Iorio et al ¹⁴⁵	Human	CKD Stage 3A to 4	
	Sigrist et al ¹⁴⁶	Human	No CKD & Stage 3A to 4	
	Rodriguez-Ortiz et al ¹⁴⁷	Rat	5/6 Nx	
Calcium-sparing phosphate binders (eg, sevelamer)	Oliveira et al ¹⁴⁸	Human	CKD Stage 3A to 4	
	Block et al ¹⁴⁹	Human	CKD Stage 3B to 4	
	Chue et al ¹⁵⁰	Human	CKD Stage 3	
	Rodelo-Haad et al ¹⁵¹	Human	ESRD on HD	
	Sprague et al ¹⁵²	Human	ESRD on HD/PD	
Nicotinamide	Shahbazian et al ¹⁵⁵	Human	ESRD on HD	
Tenapanor	Block et al ¹⁵⁷	Human	ESRD on HD	
	Labonte et al ¹⁵⁶	Rat	5/6 Nx	
Combination therapy with lanthanum and nicotinamide	Ix et al ¹⁵⁹	Human	CKD Stage 3B to 4	No sustained reduction in serum FGF23
Targeting Vitamin D				
Calcitriol	Leifheit-Nestler et al ¹¹⁴	Rat	5/6 Nx	Reduction in LVH, cardiac FGF23 & FGFR4 expression, and NFAT/calcineurin activation
	Leifheit-Nestler et al ¹¹⁴	Rat (NRVM)	n/a	In vitro reduction in FGF23-induced cardiomyocyte hypertrophy
Calcitriol & paricalcitol	Lau et al ¹⁶³	Mice	Partial renal ablation, phosphate loaded	Increase in serum α Klotho. No effect on renal/parathyroid α Klotho expression
Paricalcitol	Ritter et al ¹⁶⁴	Rat	5/6 Nx	Preservation of renal α Klotho, and increase in parathyroid α Klotho expression in uremia
Targeting parathyroid hormone				
Cinacalcet	Moe et al ¹⁶⁷	Human	ESRD on HD	Reduction in serum FGF23, cardiovascular death, SCD, and heart failure
	Charytan et al ¹⁷³	Human	CKD Stage 3A to 4	Reduction in FGF23 and PTH
	Chonchol et al ¹⁷⁴	Human	CKD Stage 3A to 4	Reduction in FGF23 and PTH; increase in hypocalcemia
Other indirect targets				
Intensified (daily) hemodialysis	Zaritsky et al ¹⁷⁵	Human	ESRD on HD	Reduction in FGF23 vs conventional hemodialysis
Renal transplantation	Barros et al ¹⁷⁶	Human	ESRD (½ on HD)	Reduction in FGF23 and phosphate
Treatment of iron deficiency (eg, ferric citrate)	Block et al ^{179,180}	Human	CKD Stage 3A to 5	Reduction in serum FGF23
Inhibition of inflammation (eg, NF κ B inhibitor)	Rodriguez-Ortiz et al ¹⁴⁷	Rat	No renal impairment	Attenuation of LPS-induced FGF23 elevation
ATII receptor blockade	Yoon et al ¹⁸¹	Mice	CsA-induced renal injury	Increase in renal α Klotho expression
Statins (eg, atorvastatin, pitavastatin)	Narumiya et al ¹⁸²	Mouse (IMCD3)	n/a	In vitro upregulation of α Klotho mRNA expression
PPAR γ agonist (eg, pioglitazone)	Yang et al ¹⁸³	Rat	No renal impairment	Increase in renal α Klotho expression
Exercise	Matsubara et al ¹⁸⁴	Human	No renal impairment	Increase in serum/plasma α Klotho
	Tan et al ¹⁸⁵			

(Continued)

Table. Continued

Treatment	Study	Species	CKD Status	Outcome
Directly targeting FGF23				
FGF23 neutralizing antibodies	Hasegawa et al ¹⁸⁹	Rat	Anti-GBM nephritis	Decrease in PTH; increase in vitamin D, calcium and phosphate
	Shalhoub et al ¹⁸⁸	Rat	5/6 Nx	In addition to above, increase in mortality & aortic calcification
FGFR antagonists				
FGFR4 antibody	Grabner et al ¹⁷⁵	Rat	5/6 Nx	Attenuation of LVH
		Rat (NRVM)	n/a	In vitro inhibition of FGF23-induced cardiac myocyte hypertrophy
Pan-FGFR antibody	Faul et al ⁷⁴	Rat	5/6 Nx	Attenuation of LVH
		Rat (NRVM)	n/a	In vitro inhibition of FGF23-induced cardiac myocyte hypertrophy
	Di Marco et al ¹⁹¹	Rat	5/6 Nx	Reduction in LV mass and fibrosis; improvement in ejection fraction
	Yanochko et al ¹⁹²	Rat	No renal impairment	Cardiac toxicity, hyperphosphatemia and ectopic calcification
Sodium-phosphate co-transporter PiT2 knockout	Bon et al ¹⁸⁷	Mice	No renal impairment	PiT2 regulates FGF23 synthesis; potential target for therapeutics
Directly targeting α Klotho				
Intravenous α Klotho transgene	Xie et al ¹⁹⁸	Mice	5/6 Nx±heterozygous Klotho	Attenuation of cardiac hypertrophy and fibrosis
Recombinant α Klotho	Hu et al ¹⁹⁶	Mice	Uni-nephrectomy + contralateral IR injury	Preservation of cardiac function, reduced hypertrophy and fibrosis; attenuation of renal fibrosis
	Yang et al ¹¹⁸	Mice	5/6 Nx	Inhibition of LVH and reduction in myocardial reactive oxygen species production
	Yu et al ²⁰⁰	Mice	No renal impairment	Attenuation of angiotensin II-induced cardiac hypertrophy, fibrosis, and dysfunction
	Suassuna et al ¹⁹⁹	Rat	5/6 Nx	Reduction of uremic cardiac remodeling (hypertrophy and fibrosis)
	Yang et al ¹¹⁸	Rat (NRVM)	n/a	In vitro inhibition of uremic toxin-induced (indoxyl sulphate) myocyte hypertrophy
Small molecule α Klotho modulators	King et al ²⁰¹	Human (HEK293)	n/a	In vitro elevation of α Klotho protein expression

5/6 Nx indicates 5/6 nephrectomized; anti-GBM, anti-glomerular basement membrane; ATII, angiotensin II; CKD, chronic kidney disease; CM, cardiomyocyte; CsA, cyclosporine A; eGFR, estimated glomerular filtration rate; ESRD, end-stage renal disease; FGF23, fibroblast growth factor-23; FGFR, fibroblast growth factor receptor; HD, hemodialysis; HEK293, human embryonic kidney 293 cells; IR, ischemia-reperfusion; LPS, lipopolysaccharide; LV, left ventricle; LVH, left ventricular hypertrophy; n/a, not applicable; NFAT, nuclear factor of activated T-cells; NRVM, neonatal rat ventricular myocytes; PD, peritoneal dialysis; PPAR γ , peroxisome proliferator-activated receptor γ ; PTH, parathyroid hormone; and SCD, sudden cardiac death.

yet been found in mammals.^{186,187} Animal data have recently suggested that sodium-phosphate cotransporter PiT2 found in bone might regulate phosphate-dependent FGF23 synthesis and that targeting PiT2 could potentially reduce FGF23 synthesis.¹⁸⁷ The development of novel small molecules against PiT2 or the yet-to-be characterized PiT2-FGF23 pathway would give a proof of principle approach in animals for blocking FGF23 synthesis.

Indiscriminate FGF23 neutralization with monoclonal antibodies has been shown to worsen hyperphosphatemia, and increase vascular calcification and mortality in rat models of CKD.^{188,189} Use of anti-FGF23 monoclonal antibodies such as burosumab,

currently approved for the treatment of x-linked hypophosphatemia, causes severe side effects in patients with CKD by decreasing phosphaturia.¹⁹⁰ Analogous to the use of calcimimetics, total blockade of FGF23 may theoretically be of benefit in ESRD. From a clinical therapeutic and drug development perspective, the ideal target would be the FGFR responsible for the adverse cardiac effects of FGF23 and not FGFR1, which is critical for maintaining normal phosphate levels. Indiscriminate blockade of FGFRs, although shown to be effective at preventing the development of,¹⁹¹ and reversing LVH in rodents,⁷⁴ results in cardiac toxicity, hyperphosphatemia, and ectopic calcium deposition.¹⁹² Targeting cardiac FGFR4, especially

its α Klotho-independent activation of downstream signaling pathways, represents an exciting possibility. Indeed, FGFR4-blocking antibodies have been shown to inhibit FGF23-induced hypertrophy of isolated rat cardiomyocytes in vitro, and attenuated LVH in a 5/6 nephrectomy rat model of CKD.⁷⁵ Currently, very little is known about the specific FGFRs mediating the actions of FGF23 in nonmyocyte cardiac cells including fibroblasts, or whether blocking FGFR4 prevents or reverses cardiac fibrosis.¹²⁸ Several anti-FGF small molecule tyrosine kinase inhibitors and related compounds, monoclonal antibodies, and FGFR-analogues currently in development are mainly for use in oncology.¹⁹³ Development of these agents specifically for the treatment of uremic cardiomyopathy is, therefore, a real possibility.

DIRECTLY TARGETING α KLOTHO

In animal studies, administration of α Klotho protein has been shown to be effective in protecting against progression of CKD.^{194–197} Intravenous administration of a transgene-encoding soluble α Klotho reduces LVH in α Klotho-deficient mice.¹⁹⁸ Recombinant α Klotho also attenuates cardiac remodeling, fibrosis,^{195,199} reactive oxygen species production, and LVH¹¹⁷ induced by CKD in mice. In another study, α Klotho improved cardiac function and reduced hypertrophy and fibrosis in a mouse model of hypertension, although decreasing FGF23 expression.²⁰⁰ However, it remains unclear whether α Klotho is cardioprotective in the absence of increased FGF23.

Elevated FGF23 and decreased circulating α Klotho are observed in both aging and in CKD,^{116,197,198} leading to speculation that both CKD and the age-related decline in this and other physiological functions are caused in part by increased FGF23 and decreased α Klotho.⁵⁵ If true, this would assume soluble α Klotho acts as an inhibitor of α Klotho-independent actions of FGF23. Potential mechanisms include inhibiting FGF23/FGFR4 signaling by either binding first to FGFR4 or via an initial interaction with FGF23 (decoy receptor). An alternative mechanism involves FGF23 and FGFR4 forming a complex in the presence of soluble α Klotho but activating FRS2 α /Ras/mitogen-activated protein kinase rather than PLC γ /calcineurin/NFAT signaling (Figure 1).⁵⁵ Therefore, development of α Klotho-mimetics, through the development of protein–protein inhibitors, provides another potential therapeutic option. Trials of such agents to prevent progression of CKD are expected to start in the next couple of years.

To date, small molecule α Klotho modulators have been identified from a high-throughput screen of 150 000 compounds with those showing most

promise being α Klotho transcription activators. Furthermore, extracellular signal-regulated kinase phosphorylation in FGFR-transfected cells increased, demonstrating an effect on FGF23 signaling.²⁰¹ The recently discovered crystal structure of α Klotho:FGF23:FGFR1 in a 1:1:1 relationship has provided new insight into this dynamic interplay of factors and may reveal new therapeutic options.⁶² Although clearly at an early stage of exploration, the identification of new small molecules demonstrates the potential of drugs acting via α Klotho.

CONCLUSIONS

While patients with early stages of CKD are at increased risk of atherosclerotic complications, later stages of kidney disease are associated with heart failure and sudden death caused by uremic cardiomyopathy. Significant progress has been made over the past 2 decades in our understanding of, and ability to study the pathological basis of uremic cardiomyopathy using native T1 mapping. There are clear clinical data illustrating an association of increased FGF23 and reduced α Klotho with uremic cardiomyopathy in patients with CKD, and in heart failure and AF in subjects without known CKD. However, whether FGF23 has a truly causal relationship in uremic cardiomyopathy remains controversial. Characterization of the receptors and molecular pathways by which FGF23 might mediate LVH, cardiac fibrosis, and arrhythmias will help to identify therapeutic targets. Further work is required to identify the interplay between FGF23, cardiomyocytes and fibroblasts, and the effects of these interactions on the subsequent cardiac remodeling to reveal the molecular and cellular targets of FGF23 and α Klotho. Improved understanding is likely to enable the development of novel therapeutic interventions capable of effectively reducing the excess cardiovascular risk associated with CKD/ESRD, and perhaps even the risk of AF and heart failure in patients without CKD.

ARTICLE INFORMATION

Affiliations

From the Birmingham Cardio-Renal Group, University Hospitals Birmingham, University of Birmingham, United Kingdom (J.P.L., A.M.P., L.P., A.R., W.C., R.P.S., L.F., P.K., D.P., J.N.T., C.J.F.); Institute of Cardiovascular Sciences (J.P.L., A.M.P., L.P., W.C., R.P.S., L.F., P.K., D.P., J.N.T., C.J.F.), Institute of Immunology and Immunotherapy (C.W.), School of Pharmacy (A.M.J.), and Institute of Inflammation and Ageing (H.M.M.), University of Birmingham, United Kingdom; NIHR Birmingham Biomedical Research Centre, University Hospitals Birmingham NHS Foundation Trust and University of Birmingham, United Kingdom (C.W.); Department of Cardiology (R.P.S., L.F., J.N.T.), and Department of Nephrology (J.P.L., A.M.P., C.J.F.), University Hospitals Birmingham NHS Foundation Trust, Birmingham, United Kingdom.

Sources of Funding

This work was supported by the British Heart Foundation Accelerator Award (AA/18/2/34218 to Kirchhof and The Institute of Cardiovascular Sciences, University of Birmingham); British Heart Foundation Clinical Research Training Fellowships (FS/19/16/34169 to Law, FS/16/73/32314 to Price, and FS/18/29/44554 to Pickup); and British Heart Foundation Grants (PG/17/55/33087 to Pavlovic, RG/17/15/33106, to Pavlovic, FS/19/12/34204 to Pavlovic).

Disclosures

None.

REFERENCES

- Bruck K, Stel VS, Gambaro G, Hallan S, Volzke H, Arnlov J, Kastarinen M, Guessous I, Vinhas J, Stengel B, et al. CKD prevalence varies across the European general population. *J Am Soc Nephrol*. 2016;27:2135–2147.
- Levin A, Tonelli M, Bonventre J, Coresh J, Donner JA, Fogo AB, Fox CS, Gansevoort RT, Heerspink HJL, Jardine M, et al. Global kidney health 2017 and beyond: a roadmap for closing gaps in care, research, and policy. *Lancet*. 2017;390:1888–1917.
- Thomas B, Matsushita K, Abate KH, Al-Aly Z, Arnlov J, Asayama K, Atkins R, Badawi A, Ballew SH, Banerjee A, et al. Global cardiovascular and renal outcomes of reduced GFR. *J Am Soc Nephrol*. 2017;28:2167–2179.
- Go AS, Chertow GM, Fan D, McCulloch CE, Hsu CY. Chronic kidney disease and the risks of death, cardiovascular events, and hospitalization. *N Engl J Med*. 2004;351:1296–1305.
- Chronic Kidney Disease Prognosis C, Matsushita K, van der Velde M, Astor BC, Woodward M, Levey AS, de Jong PE, Coresh J, Gansevoort RT. Association of estimated glomerular filtration rate and albuminuria with all-cause and cardiovascular mortality in general population cohorts: a collaborative meta-analysis. *Lancet*. 2010;375:2073–2081.
- Methven S, Steenkamp R, Fraser S. UK Renal Registry 19th Annual Report: Chapter 5 Survival and Causes of Death in UK Adult Patients on Renal Replacement Therapy in 2015: National and Centre-specific Analyses. *Nephron*. 2017;137(suppl 1):117–150.
- Wanner C, Amann K, Shoji T. The heart and vascular system in dialysis. *Lancet*. 2016;388:276–284.
- Tonelli M, Isles C, Curhan GC, Tonkin A, Pfeffer MA, Shepherd J, Sacks FM, Furberg C, Cobbe SM, Simes J, et al. Effect of pravastatin on cardiovascular events in people with chronic kidney disease. *Circulation*. 2004;110:1557–1563.
- Baigent C, Landray MJ, Reith C, Emberson J, Wheeler DC, Tomson C, Wanner C, Krane V, Cass A, Craig J, et al. The effects of lowering LDL cholesterol with simvastatin plus ezetimibe in patients with chronic kidney disease (Study of Heart and Renal Protection): a randomised placebo-controlled trial. *Lancet*. 2011;377:2181–2192.
- Ferro CJ, Mark PB, Kanbay M, Sarafidis P, Heine GH, Rossignol P, Massy ZA, Mallamaci F, Valdivielso JM, Malyszko J, et al. Lipid management in patients with chronic kidney disease. *Nat Rev Nephrol*. 2018;14:727–749.
- Wanner C, Krane V, Marz W, Olschewski M, Asmus HG, Kramer W, Kuhn KW, Kutemeyer H, Mann JF, Ruf G, et al. Randomized controlled trial on the efficacy and safety of atorvastatin in patients with type 2 diabetes on hemodialysis (4D study): demographic and baseline characteristics. *Kidney Blood Press Res*. 2004;27:259–266.
- Fellstrom BC, Jardine AG, Schmieder RE, Holdaas H, Bannister K, Beutler J, Chae DW, Chevaile A, Cobbe SM, Gronhagen-Riska C, et al. Rosuvastatin and cardiovascular events in patients undergoing hemodialysis. *N Engl J Med*. 2009;360:1395–1407.
- Thompson S, James M, Wiebe N, Hemmelgarn B, Manns B, Klarenbach S, Tonelli M; Alberta Kidney Disease N. Cause of death in patients with reduced kidney function. *J Am Soc Nephrol*. 2015;26:2504–2511.
- Kalra PA, Green D, Poulikakos D. Arrhythmia in hemodialysis patients and its relation to sudden death. *Kidney Int*. 2018;93:781–783.
- Mall G, Huther W, Schneider J, Lundin P, Ritz E. Diffuse intermyocardial fibrosis in uraemic patients. *Nephrol Dial Transplant*. 1990;5:39–44.
- Aoki J, Ikari Y, Nakajima H, Mori M, Sugimoto T, Hatori M, Tanimoto S, Amiya E, Hara K. Clinical and pathologic characteristics of dilated cardiomyopathy in hemodialysis patients. *Kidney Int*. 2005;67:333–340.
- Mark PB, Johnston N, Groenning BA, Foster JE, Blyth KG, Martin TN, Steedman T, Dargie HJ, Jardine AG. Redefinition of uremic cardiomyopathy by contrast-enhanced cardiac magnetic resonance imaging. *Kidney Int*. 2006;69:1839–1845.
- Rutherford E, Talle MA, Mangion K, Bell E, Rauhalampi SM, Roditi G, McComb C, Radjenovic A, Welsh P, Woodward R, et al. Defining myocardial tissue abnormalities in end-stage renal failure with cardiac magnetic resonance imaging using native T1 mapping. *Kidney Int*. 2016;90:845–852.
- Hayer MK, Price AM, Liu B, Baig S, Ferro CJ, Townend JN, Steeds RP, Edwards NC. Diffuse myocardial interstitial fibrosis and dysfunction in early chronic kidney disease. *Am J Cardiol*. 2018;121:656–660.
- Wang X, Shapiro JL. Evolving concepts in the pathogenesis of uraemic cardiomyopathy. *Nat Rev Nephrol*. 2019;15:159–175.
- Levin A, Singer J, Thompson CR, Ross H, Lewis M. Prevalent left ventricular hypertrophy in the predialysis population: identifying opportunities for intervention. *Am J Kidney Dis*. 1996;27:347–354.
- Parfrey PS, Foley RN, Harnett JD, Kent GM, Murray DC, Barre PE. Outcome and risk factors for left ventricular disorders in chronic uraemia. *Nephrol Dial Transplant*. 1996;11:1277–1285.
- Foley RN, Parfrey PS, Harnett JD, Kent GM, Martin CJ, Murray DC, Barre PE. Clinical and echocardiographic disease in patients starting end-stage renal disease therapy. *Kidney Int*. 1995;47:186–192.
- Levy D, Garrison RJ, Savage DD, Kannel WB, Castelli WP. Prognostic implications of echocardiographically determined left ventricular mass in the Framingham Heart Study. *N Engl J Med*. 1990;322:1561–1566.
- Haider AW, Larson MG, Benjamin EJ, Levy D. Increased left ventricular mass and hypertrophy are associated with increased risk for sudden death. *J Am Coll Cardiol*. 1998;32:1454–1459.
- Schillaci G, Verdecchia P, Porcellati C, Cuccurullo O, Cosco C, Perticone F. Continuous relation between left ventricular mass and cardiovascular risk in essential hypertension. *Hypertension*. 2000;35:580–586.
- Devereux RB, Wachtell K, Gerdts E, Boman K, Nieminen MS, Papademetriou V, Rokkedal J, Harris K, Aurup P, Dahlöf B. Prognostic significance of left ventricular mass change during treatment of hypertension. *JAMA*. 2004;292:2350–2356.
- Simpson HJ, Gandy SJ, Houston JG, Rajendra NS, Davies JI, Struthers AD. Left ventricular hypertrophy: reduction of blood pressure already in the normal range further regresses left ventricular mass. *Heart*. 2010;96:148–152.
- Edwards NC, Hirth A, Ferro CJ, Townend JN, Steeds RP. Subclinical abnormalities of left ventricular myocardial deformation in early-stage chronic kidney disease: the precursor of uremic cardiomyopathy? *J Am Soc Echocardiogr*. 2008;21:1293–1298.
- Park M, Hsu CY, Li Y, Mishra RK, Keane M, Rosas SE, Dries D, Xie D, Chen J, He J, et al. Associations between kidney function and subclinical cardiac abnormalities in CKD. *J Am Soc Nephrol*. 2012;23:1725–1734.
- Hammond IW, Devereux RB, Alderman MH, Lutas EM, Spitzer MC, Crowley JS, Laragh JH. The prevalence and correlates of echocardiographic left ventricular hypertrophy among employed patients with uncomplicated hypertension. *J Am Coll Cardiol*. 1986;7:639–650.
- Wolf WC, Yoshida H, Agata J, Chao L, Chao J. Human tissue kallikrein gene delivery attenuates hypertension, renal injury, and cardiac remodeling in chronic renal failure. *Kidney Int*. 2000;58:730–739.
- McMahon AC, Greenwald SE, Dodd SM, Hurst MJ, Raine AE. Prolonged calcium transients and myocardial remodeling in early experimental uraemia. *Nephrol Dial Transplant*. 2002;17:759–764.
- Suzuki H, Nakamoto H, Okada H, Sugahara S, Kanno Y. A selective angiotensin receptor antagonist, Valsartan, produced regression of left ventricular hypertrophy associated with a reduction of arterial stiffness. *Adv Perit Dial*. 2003;19:59–66.
- Tai DJ, Lim TW, James MT, Manns BJ, Tonelli M, Hemmelgarn BR; Alberta Kidney Disease N. Cardiovascular effects of angiotensin converting enzyme inhibition or angiotensin receptor blockade in hemodialysis: a meta-analysis. *Clin J Am Soc Nephrol*. 2010;5:623–630.
- Hammer F, Malzahn U, Donhauser J, Betz C, Schneider MP, Grupp C, Pollak N, Stork S, Wanner C, Krane V, et al. A randomized controlled

- trial of the effect of spironolactone on left ventricular mass in hemodialysis patients. *Kidney Int.* 2019;95:983–991.
37. Farshid A, Pathak R, Shadbolt B, Arnolda L, Talaulikar G. Diastolic function is a strong predictor of mortality in patients with chronic kidney disease. *BMC Nephrol.* 2013;14:280.
 38. Pecoits-Filho R, Bucharles S, Barberato SH. Diastolic heart failure in dialysis patients: mechanisms, diagnostic approach, and treatment. *Semin Dial.* 2012;25:35–41.
 39. Rakhit DJ, Zhang XH, Leano R, Armstrong KA, Isbel NM, Marwick TH. Prognostic role of subclinical left ventricular abnormalities and impact of transplantation in chronic kidney disease. *Am Heart J.* 2007;153:656–664.
 40. Edwards NC, Ferro CJ, Townend JN, Steeds RP. Aortic distensibility and arterial-ventricular coupling in early chronic kidney disease: a pattern resembling heart failure with preserved ejection fraction. *Heart.* 2008;94:1038–1043.
 41. Hensen LCR, Goossens K, Delgado V, Abou R, Rotmans JI, Jukema JW, Bax JJ. Prevalence of left ventricular systolic dysfunction in pre-dialysis and dialysis patients with preserved left ventricular ejection fraction. *Eur J Heart Fail.* 2018;20:560–568.
 42. Stack AG, Bloembergen WE. A cross-sectional study of the prevalence and clinical correlates of congestive heart failure among incident US dialysis patients. *Am J Kidney Dis.* 2001;38:992–1000.
 43. Sood MM, Pauly RP, Rigatto C, Komenda P. Left ventricular dysfunction in the haemodialysis population. *NDT Plus.* 2008;1:199–205.
 44. Zannad F, Rossignol P. Cardiorenal syndrome revisited. *Circulation.* 2018;138:929–944.
 45. Becker AE, Heijmans CD, Essed CE. Chronic non-ischaemic congestive heart disease and endomyocardial biopsies. Worth the extra? *Eur Heart J.* 1991;12:218–223.
 46. Cooper LT, Baughman KL, Feldman AM, Frustaci A, Jessup M, Kuhl U, Levine GN, Narula J, Starling RC, Towbin J, et al. The role of endomyocardial biopsy in the management of cardiovascular disease: a scientific statement from the American Heart Association, the American College of Cardiology, and the European Society of Cardiology. *Circulation.* 2007;116:2216–2233.
 47. Simonetti OP, Kim RJ, Fieno DS, Hillenbrand HB, Wu E, Bundy JM, Finn JP, Judd RM. An improved MR imaging technique for the visualization of myocardial infarction. *Radiology.* 2001;218:215–223.
 48. McCrohon JA, Moon JC, Prasad SK, McKenna WJ, Lorenz CH, Coats AJ, Pennell DJ. Differentiation of heart failure related to dilated cardiomyopathy and coronary artery disease using gadolinium-enhanced cardiovascular magnetic resonance. *Circulation.* 2003;108:54–59.
 49. Moon JC, Reed E, Sheppard MN, Elkington AG, Ho SY, Burke M, Petrou M, Pennell DJ. The histologic basis of late gadolinium enhancement cardiovascular magnetic resonance in hypertrophic cardiomyopathy. *J Am Coll Cardiol.* 2004;43:2260–2264.
 50. Edwards NC, Moody WE, Chue CD, Ferro CJ, Townend JN, Steeds RP. Defining the natural history of uremic cardiomyopathy in chronic kidney disease: the role of cardiovascular magnetic resonance. *JACC Cardiovasc Imaging.* 2014;7:703–714.
 51. Bull S, White SK, Piechnik SK, Flett AS, Ferreira VM, Loudon M, Francis JM, Karamitsos TD, Prendergast BD, Robson MD, et al. Human non-contrast T1 values and correlation with histology in diffuse fibrosis. *Heart.* 2013;99:932–937.
 52. Hayer M, Price A, Liu B, Baig S, Ferro CJ, Townend JN, Steeds RP, Edwards NC. Progression of myocardial fibrosis in chronic kidney disease. *Nephrol Dial Transplant.* 2019;34:i35–i36.
 53. Graham-Brown MP, March DS, Churchward DR, Stensel DJ, Singh A, Arnold R, Burton JO, McCann GP. Novel cardiac nuclear magnetic resonance method for noninvasive assessment of myocardial fibrosis in hemodialysis patients. *Kidney Int.* 2016;90:835–844.
 54. Ito M, Sakai Y, Furumoto M, Segawa H, Haito S, Yamanaka S, Nakamura R, Kuwahata M, Miyamoto K. Vitamin D and phosphate regulate fibroblast growth factor-23 in K-562 cells. *Am J Physiol Endocrinol Metab.* 2005;288:E1101–1109.
 55. Richter B, Faul C. FGF23 actions on target tissues-with and without klotho. *Front Endocrinol (Lausanne).* 2018;9:189.
 56. Ornitz DM, Itoh N. Fibroblast growth factors. *Genome Biol.* 2001;2:REVIEWS3005.
 57. Eswarakumar VP, Lax I, Schlessinger J. Cellular signaling by fibroblast growth factor receptors. *Cytokine Growth Factor Rev.* 2005;16:139–149.
 58. Ben-Dov IZ, Galitzer H, Lavi-Moshayoff V, Goetz R, Kuro-o M, Mohammadi M, Sirkis R, Naveh-Mony T, Silver J. The parathyroid is a target organ for FGF23 in rats. *J Clin Invest.* 2007;117:4003–4008.
 59. Krajcsnik T, Bjorklund P, Marsell R, Ljunggren O, Akerstrom G, Jonsson KB, Westin G, Larsson TE. Fibroblast growth factor-23 regulates parathyroid hormone and 1 α -hydroxylase expression in cultured bovine parathyroid cells. *J Endocrinol.* 2007;195:125–131.
 60. Gattineni J, Bates C, Twombly K, Dwarakanath V, Robinson ML, Goetz R, Mohammadi M, Baum M. FGF23 decreases renal NaPi-2a and NaPi-2c expression and induces hypophosphatemia in vivo predominantly via FGF receptor 1. *Am J Physiol Renal Physiol.* 2009;297:F282–291.
 61. Olauson H, Lindberg K, Amin R, Sato T, Jia T, Goetz R, Mohammadi M, Andersson G, Lanske B, Larsson TE. Parathyroid-specific deletion of Klotho unravels a novel calcineurin-dependent FGF23 signaling pathway that regulates PTH secretion. *PLoS Genet.* 2013;9:e1003975.
 62. Chen G, Liu Y, Goetz R, Fu L, Jayaraman S, Hu MC, Moe OW, Liang G, Li X, Mohammadi M. α -Klotho is a non-enzymatic molecular scaffold for FGF23 hormone signalling. *Nature.* 2018;553:461–466.
 63. Kuro-o M, Matsumura Y, Aizawa H, Kawaguchi H, Suga T, Utsugi T, Ohya Y, Kurabayashi M, Kaname T, Kume E, et al. Mutation of the mouse klotho gene leads to a syndrome resembling ageing. *Nature.* 1997;390:45–51.
 64. Kato Y, Arakawa E, Kinoshita S, Shirai A, Furuya A, Yamano K, Nakamura K, Iida A, Anazawa H, Koh N, et al. Establishment of the anti-Klotho monoclonal antibodies and detection of Klotho protein in kidneys. *Biochem Biophys Res Commun.* 2000;267:597–602.
 65. Lim K, Groen A, Molostov G, Lu T, Lilley KS, Sneed D, James S, Wilkinson IB, Ting S, Hsiao LL, et al. α -Klotho expression in human tissues. *J Clin Endocrinol Metab.* 2015;100:E1308–1318.
 66. Chen CD, Podvin S, Gillespie E, Leeman SE, Abraham CR. Insulin stimulates the cleavage and release of the extracellular domain of Klotho by ADAM10 and ADAM17. *Proc Natl Acad Sci USA.* 2007;104:19796–19801.
 67. Bloch L, Sineschekova O, Reichenbach D, Reiss K, Saftig P, Kuro-o M, Kaether C. Klotho is a substrate for α -, β - and γ -secretase. *FEBS Lett.* 2009;583:3221–3224.
 68. Chen CD, Tung TY, Liang J, Zeldich E, Tucker Zhou TB, Turk BE, Abraham CR. Identification of cleavage sites leading to the shed form of the anti-aging protein klotho. *Biochemistry.* 2014;53:5579–5587.
 69. Hu MC, Shi M, Zhang J, Addo T, Cho HJ, Barker SL, Ravikummar P, Gillings N, Bian A, Sidhu SS, et al. Renal production, uptake, and handling of circulating α -klotho. *J Am Soc Nephrol.* 2016;27:79–90.
 70. Urakawa I, Yamazaki Y, Shimada T, Iijima K, Hasegawa H, Okawa K, Fujita T, Fukumoto S, Yamashita T. Klotho converts canonical FGF receptor into a specific receptor for FGF23. *Nature.* 2006;444:770–774.
 71. Kurosu H, Ogawa Y, Miyoshi M, Yamamoto M, Nandi A, Rosenblatt KP, Baum MG, Schiavi S, Hu MC, Moe OW, et al. Regulation of fibroblast growth factor-23 signaling by klotho. *J Biol Chem.* 2006;281:6120–6123.
 72. Hum JM, O'Bryan LM, Tatiparthi AK, Cass TA, Clinkenbeard EL, Cramer MS, Bhaskaran M, Johnson RL, Wilson JM, Smith RC, et al. Chronic hyperphosphatemia and vascular calcification are reduced by stable delivery of soluble Klotho. *J Am Soc Nephrol.* 2017;28:1162–1174.
 73. Liu X, Chen Y, McCoy CW, Zhao T, Quarles DL, Pi M, Bhattacharya SK, King G, Sun Y. Differential regulatory role of soluble klothos on cardiac fibrogenesis in hypertension. *Am J Hypertens.* 2016;29:1140–1147.
 74. Faul C, Amaral AP, Oskouei B, Hu MC, Sloan A, Isakova T, Gutierrez OM, Aguillon-Prada R, Lincoln J, Hare JM, et al. FGF23 induces left ventricular hypertrophy. *J Clin Invest.* 2011;121:4393–4408.
 75. Grabner A, Amaral AP, Schramm K, Singh S, Sloan A, Yanucil C, Li J, Shehadeh LA, Hare JM, David V, et al. Activation of cardiac fibroblast growth factor receptor 4 causes left ventricular hypertrophy. *Cell Metab.* 2015;22:1020–1032.
 76. Singh S, Grabner A, Yanucil C, Schramm K, Czaya B, Krick S, Czaya MJ, Bartz R, Abraham R, Di Marco GS, et al. Fibroblast growth factor 23 directly targets hepatocytes to promote inflammation in chronic kidney disease. *Kidney Int.* 2016;90:985–996.
 77. Grabner A, Schramm K, Silswal N, Hendrix M, Yanucil C, Czaya B, Singh S, Wolf M, Hermann S, Stypmann J, et al. FGF23/FGFR4-mediated left ventricular hypertrophy is reversible. *Sci Rep.* 2017;7:1993.
 78. Samak M, Fatullayev J, Sabashnikov A, Zerrouh M, Schmack B, Farag M, Popov AF, Dohmen PM, Choi YH, Wahlers T, et al. Cardiac

- hypertrophy: an introduction to molecular and cellular basis. *Med Sci Monit Basic Res.* 2016;22:75–79.
79. Molkenin JD. Calcineurin-NFAT signaling regulates the cardiac hypertrophic response in coordination with the MAPKs. *Cardiovasc Res.* 2004;63:467–475.
 80. Isakova T, Wahl P, Vargas GS, Gutierrez OM, Scialla J, Xie H, Appleby D, Nessel L, Bellovich K, Chen J, et al. Fibroblast growth factor 23 is elevated before parathyroid hormone and phosphate in chronic kidney disease. *Kidney Int.* 2011;79:1370–1378.
 81. Gutierrez OM, Mannstadt M, Isakova T, Rauh-Hain JA, Tamez H, Shah A, Smith K, Lee H, Thadhani R, Juppner H, et al. Fibroblast growth factor 23 and mortality among patients undergoing hemodialysis. *N Engl J Med.* 2008;359:584–592.
 82. Shimada T, Urakawa I, Isakova T, Yamazaki Y, Epstein M, Wesseling-Perry K, Wolf M, Salusky IB, Juppner H. Circulating fibroblast growth factor 23 in patients with end-stage renal disease treated by peritoneal dialysis is intact and biologically active. *J Clin Endocrinol Metab.* 2010;95:578–585.
 83. Kestenbaum B, Sachs MC, Hoofnagle AN, Siscovick DS, Ix JH, Robinson-Cohen C, Lima JA, Polak JF, Blondon M, Ruzinski J, et al. Fibroblast growth factor-23 and cardiovascular disease in the general population: the Multi-Ethnic Study of Atherosclerosis. *Circ Heart Fail.* 2014;7:409–417.
 84. Lutsey PL, Alonso A, Selvin E, Pankow JS, Michos ED, Agarwal SK, Loehr LR, Eckfeldt JH, Coresh J. Fibroblast growth factor-23 and incident coronary heart disease, heart failure, and cardiovascular mortality: the Atherosclerosis Risk in Communities study. *J Am Heart Assoc.* 2014;3:e000936. DOI: 10.1161/JAHA.114.000936.
 85. Scialla JJ, Xie H, Rahman M, Anderson AH, Isakova T, Ojo A, Zhang X, Nessel L, Hamano T, Grunwald JE, et al. Fibroblast growth factor-23 and cardiovascular events in CKD. *J Am Soc Nephrol.* 2014;25:349–360.
 86. Seiler S, Rogacev KS, Roth HJ, Shafein P, Emrich I, Neuhaus S, Floege J, Fliser D, Heine GH. Associations of FGF-23 and sKlotho with cardiovascular outcomes among patients with CKD stages 2–4. *Clin J Am Soc Nephrol.* 2014;9:1049–1058.
 87. Moe SM, Chertow GM, Parfrey PS, Kubo Y, Block GA, Correa-Rotter R, Drueke TB, Herzog CA, London GM, Mahaffey KW, et al. Cinacalcet, fibroblast growth factor-23, and cardiovascular disease in hemodialysis: the evaluation of cinacalcet hcl therapy to lower cardiovascular events (EVOLVE) trial. *Circulation.* 2015;132:27–39.
 88. Marthi A, Donovan K, Haynes R, Wheeler DC, Baigent C, Rooney CM, Landray MJ, Moe SM, Yang J, Holland L, et al. Fibroblast growth factor-23 and risks of cardiovascular and noncardiovascular diseases: a meta-analysis. *J Am Soc Nephrol.* 2018;29:2015–2027.
 89. Mathew JS, Sachs MC, Katz R, Patton KK, Heckbert SR, Hoofnagle AN, Alonso A, Chonchol M, Deo R, Ix JH, et al. Fibroblast growth factor-23 and incident atrial fibrillation: the Multi-Ethnic Study of Atherosclerosis (MESA) and the Cardiovascular Health Study (CHS). *Circulation.* 2014;130:298–307.
 90. Mehta R, Cai X, Lee J, Scialla JJ, Bansal N, Sondheimer JH, Chen J, Hamm LL, Ricardo AC, Navaneethan SD, et al. Association of fibroblast growth factor 23 with atrial fibrillation in chronic kidney disease, from the chronic renal insufficiency cohort study. *JAMA Cardiol.* 2016;1:548–556.
 91. Mizia-Stec K, Wiecek J, Polak M, Wybraniec MT, Wozniak-Skowerska I, Hoffmann A, Nowak S, Wikarek M, Wnuk-Wojnar A, Chudek J, et al. Lower soluble Klotho and higher fibroblast growth factor 23 serum levels are associated with episodes of atrial fibrillation. *Cytokine.* 2018;111:106–111.
 92. Dong Q, Li S, Wang W, Han L, Xia Z, Wu Y, Tang Y, Li J, Cheng X. FGF23 regulates atrial fibrosis in atrial fibrillation by mediating the STAT3 and SMAD3 pathways. *J Cell Physiol.* 2019;234:19502–19510.
 93. Chua W, Purmah Y, Cardoso VR, Gkoutos GV, Tull SP, Neculau G, Thomas MR, Kotecha D, Lip GYH, Kirchhof P, et al. Data-driven discovery and validation of circulating blood-based biomarkers associated with prevalent atrial fibrillation. *Eur Heart J.* 2019;40:1268–1276.
 94. Arnlov J, Carlsson AC, Sundstrom J, Ingelsson E, Larsson A, Lind L, Larsson TE. Higher fibroblast growth factor-23 increases the risk of all-cause and cardiovascular mortality in the community. *Kidney Int.* 2013;83:160–166.
 95. Westerberg PA, Tivesten A, Karlsson MK, Mellstrom D, Orwoll E, Ohlsson C, Larsson TE, Linde T, Ljunggren O. Fibroblast growth factor 23, mineral metabolism and mortality among elderly men (Swedish MrOs). *BMC Nephrol.* 2013;14:85.
 96. Brandenburg VM, Kleber ME, Vervloet MG, Tomaschitz A, Pilz S, Stojakovic T, Delgado G, Grammer TB, Marx N, Marz W, et al. Fibroblast growth factor 23 (FGF23) and mortality: the Ludwigshafen Risk and Cardiovascular Health Study. *Atherosclerosis.* 2014;237:53–59.
 97. Masson S, Agabiti N, Vago T, Miceli M, Mayer F, Letizia T, Wienhues-Thelen U, Mureddu GF, Davoli M, Bocconelli A, et al. The fibroblast growth factor-23 and Vitamin D emerge as nontraditional risk factors and may affect cardiovascular risk. *J Intern Med.* 2015;277:318–330.
 98. Souma N, Isakova T, Lipiszko D, Sacco RL, Elkind MS, DeRosa JT, Silverberg SJ, Mendez AJ, Dong C, Wright CB, et al. Fibroblast growth factor 23 and cause-specific mortality in the general population: the Northern Manhattan study. *J Clin Endocrinol Metab.* 2016;101:3779–3786.
 99. Bergmark BA, Udell JA, Morrow DA, Cannon CP, Steen DL, Jarolim P, Budaj A, Hamm C, Guo J, Im K, et al. Association of fibroblast growth factor 23 with recurrent cardiovascular events in patients after an acute coronary syndrome: a secondary analysis of a randomized clinical trial. *JAMA Cardiol.* 2018;3:473–480.
 100. Chua W, Easter CL, Guasch E, Sitch A, Casadei B, Crijns H, Haase D, Hatem S, Kaab S, Mont L, et al. Development and external validation of predictive models for prevalent and recurrent atrial fibrillation: a protocol for the analysis of the CATCH ME combined dataset. *BMC Cardiovasc Disord.* 2019;19:120.
 101. Smith ER. The use of fibroblast growth factor 23 testing in patients with kidney disease. *Clin J Am Soc Nephrol.* 2014;9:1283–1303.
 102. Olauson H, Mencke R, Hillebrands JL, Larsson TE. Tissue expression and source of circulating alphaKlotho. *Bone.* 2017;100:19–35.
 103. Fernandez-Fernandez B, Izquierdo MC, Valino-Rivas L, Nastou D, Sanz AB, Ortiz A, Sanchez-Nino MD. Albumin downregulates Klotho in tubular cells. *Nephrol Dial Transplant.* 2018;33:1712–1722.
 104. Moreno JA, Izquierdo MC, Sanchez-Nino MD, Suarez-Alvarez B, Lopez-Larea C, Jakubowski A, Blanco J, Ramirez R, Selgas R, Ruiz-Ortega M, et al. The inflammatory cytokines TWEAK and TNFalpha reduce renal Klotho expression through NFkappaB. *J Am Soc Nephrol.* 2011;22:1315–1325.
 105. Lu X, Hu MC. Klotho/FGF23 axis in chronic kidney disease and cardiovascular disease. *Kidney Dis.* 2017;3:15–23.
 106. Otani-Takei N, Masuda T, Akimoto T, Honma S, Watanabe Y, Shiizaki K, Miki T, Kusano E, Asano Y, Kuro OM, et al. Association between serum soluble Klotho levels and mortality in chronic hemodialysis patients. *Int J Endocrinol.* 2015;2015:406269.
 107. Marcais C, Maucort-Boulch D, Drai J, Dantony E, Carlier MC, Blond E, Genet L, Kuentz F, Lataillade D, Legrand E, et al. Circulating Klotho associates with cardiovascular morbidity and mortality during hemodialysis. *J Clin Endocrinol Metab.* 2017;102:3154–3161.
 108. Memmos E, Sarafidis S, Pateinakis P, Tsiantoulas A, Faitatzidou D, Giamalis P, Vasilikos V, Papagianni A. Low plasma Klotho is associated with cardiovascular events in hemodialysis independently of major risk factors, FGF23, arterial stiffness and intima-medial-thickness. *Nephrol Dial Transplant.* 2019;34:i38.
 109. Gao S, Xu J, Zhang S, Jin J. Meta-analysis of the association between fibroblast growth factor 23 and mortality and cardiovascular events in hemodialysis patients. *Blood Purif.* 2019;47(suppl 1):24–30.
 110. Andrukhova O, Slavic S, Smorodchenko A, Zeit U, Shalhoub V, Lanske B, Pohl EE, Erben RG. FGF23 regulates renal sodium handling and blood pressure. *EMBO Mol Med.* 2014;6:744–759.
 111. Han X, Ross J, Kolumam G, Pi M, Sonoda J, King G, Quarles LD. Cardiovascular effects of renal distal tubule deletion of the FGF receptor 1 gene. *J Am Soc Nephrol.* 2018;29:69–80.
 112. Di Marco GS, Reuter S, Kentrup D, Ting L, Ting L, Grabner A, Jacobi AM, Pavenstadt H, Baba HA, Tiemann K, et al. Cardioprotective effect of calcineurin inhibition in an animal model of renal disease. *Eur Heart J.* 2011;32:1935–1945.
 113. Leifheit-Nestler M, Grosse Siemer R, Flasbart K, Richter B, Kirchhoff F, Ziegler WH, Klitschar M, Becker JU, Erbersdobler A, Aufricht C, et al. Induction of cardiac FGF23/FGFR4 expression is associated with left ventricular hypertrophy in patients with chronic kidney disease. *Nephrol Dial Transplant.* 2016;31:1088–1099.
 114. Leifheit-Nestler M, Grabner A, Hermann L, Richter B, Schmitz K, Fischer DC, Yanucil C, Faul C, Haffner D. Vitamin D treatment attenuates cardiac FGF23/FGFR4 signaling and hypertrophy in uremic rats. *Nephrol Dial Transplant.* 2017;32:1493–1503.

115. Xie J, Cha SK, An SW, Kuro OM, Birnbaumer L, Huang CL. Cardioprotection by Klotho through downregulation of TRPC6 channels in the mouse heart. *Nat Commun*. 2012;3:1238.
116. Hu MC, Shi M, Cho HJ, Adams-Huet B, Paek J, Hill K, Shelton J, Amaral AP, Faul C, Taniguchi M, et al. Klotho and phosphate are modulators of pathologic uremic cardiac remodeling. *J Am Soc Nephrol*. 2015;26:1290–1302.
117. Grabner A, Faul C. The role of fibroblast growth factor 23 and Klotho in uremic cardiomyopathy. *Curr Opin Nephrol Hypertens*. 2016;25:314–324.
118. Yang K, Wang C, Nie L, Zhao X, Gu J, Guan X, Wang S, Xiao T, Xu X, He T, et al. Klotho protects against indoxyl sulphate-induced myocardial hypertrophy. *J Am Soc Nephrol*. 2015;26:2434–2446.
119. Slavic S, Ford K, Modert M, Becirovic A, Handschuh S, Baierl A, Katica N, Zeitz U, Erben RG, Andrukova O. Genetic Ablation of Fgf23 or Klotho does not modulate experimental heart hypertrophy induced by pressure overload. *Sci Rep*. 2017;7:11298.
120. Leifheit-Nestler M, Wagner MA, Nowak J, Richter B, Böckmann I, Foinquinos A, Thum T, Meier M, Müller OJ, Haffner D. Fo083chronic Fgf23 overload fails to induce cardiac dysfunctions. *Nephrol Dial Transplant*. 2019;34:i37.
121. Souders CA, Bowers SL, Baudino TA. Cardiac fibroblast: the renaissance cell. *Circ Res*. 2009;105:1164–1176.
122. Fan D, Takawale A, Lee J, Kassiri Z. Cardiac fibroblasts, fibrosis and extracellular matrix remodeling in heart disease. *Fibrogenesis Tissue Repair*. 2012;5:15.
123. de Bakker JM, van Capelle FJ, Janse MJ, Tasseron S, Vermeulen JT, de Jonge N, Lahpor JR. Fractionated electrograms in dilated cardiomyopathy: origin and relation to abnormal conduction. *J Am Coll Cardiol*. 1996;27:1071–1078.
124. Weber KT. Fibrosis and hypertensive heart disease. *Curr Opin Cardiol*. 2000;15:264–272.
125. Espira L, Czubyrt MP. Emerging concepts in cardiac matrix biology. *Can J Physiol Pharmacol*. 2009;87:996–1008.
126. Chaturvedi RR, Herron T, Simmons R, Shore D, Kumar P, Sethia B, Chua F, Vassiliadis E, Kentish JC. Passive stiffness of myocardium from congenital heart disease and implications for diastole. *Circulation*. 2010;121:979–988.
127. Hao H, Li X, Li Q, Lin H, Chen Z, Xie J, Xuan W, Liao W, Bin J, Huang X, et al. FGF23 promotes myocardial fibrosis in mice through activation of beta-catenin. *Oncotarget*. 2016;7:64649–64664.
128. Leifheit-Nestler M, Haffner D. Paracrine effects of FGF23 on the heart. *Front Endocrinol*. 2018;9:278.
129. Faul C. Cardiac actions of fibroblast growth factor 23. *Bone*. 2017;100:69–79.
130. Roberts PR, Green D. Arrhythmias in chronic kidney disease. *Heart*. 2011;97:766–773.
131. Boriani G, Savelieva I, Dan GA, Deharo JC, Ferro C, Israel CW, Lane DA, La Manna G, Morton J, Mitjans AM, et al. Chronic kidney disease in patients with cardiac rhythm disturbances or implantable electrical devices: clinical significance and implications for decision making—a position paper of the European Heart Rhythm Association endorsed by the Heart Rhythm Society and the Asia Pacific Heart Rhythm Society. *Europace*. 2015;17:1169–1196.
132. Turakhia MP, Schiller NB, Whooley MA. Prognostic significance of increased left ventricular mass index to mortality and sudden death in patients with stable coronary heart disease (from the Heart and Soul Study). *Am J Cardiol*. 2008;102:1131–1135.
133. Takeshita K, Fujimori T, Kurotaki Y, Honjo H, Tsujikawa H, Yasui K, Lee JK, Kamiya K, Kitaichi K, Yamamoto K, et al. Sinoatrial node dysfunction and early unexpected death of mice with a defect of klotho gene expression. *Circulation*. 2004;109:1776–1782.
134. Touchberry CD, Green TM, Tchikrizov V, Mannix JE, Mao TF, Carney BW, Girgis M, Vincent RJ, Wetmore LA, Dawn B, et al. FGF23 is a novel regulator of intracellular calcium and cardiac contractility in addition to cardiac hypertrophy. *Am J Physiol Endocrinol Metab*. 2013;304:E863–873.
135. Hsueh CH, Chen NX, Lin SF, Chen PS, Gattone VH 2nd, Allen MR, Fishbein MC, Moe SM. Pathogenesis of arrhythmias in a model of CKD. *J Am Soc Nephrol*. 2014;25:2812–2821.
136. Glukhov AV, Kalyanasundaram A, Lou Q, Hage LT, Hansen BJ, Belevych AE, Mohler PJ, Knollmann BC, Periasamy M, Gyorke S, et al. Calsequestrin 2 deletion causes sinoatrial node dysfunction and atrial arrhythmias associated with altered sarcoplasmic reticulum calcium cycling and degenerative fibrosis within the mouse atrial pacemaker complex 1. *Eur Heart J*. 2015;36:686–697.
137. Navarro-Garcia JA, Delgado C, Fernandez-Velasco M, Val-Blasco A, Rodriguez-Sanchez E, Aceves-Ripoll J, Gomez-Hurtado N, Bada-Bosch T, Merida-Herrero E, Hernandez E, et al. Fibroblast growth factor-23 promotes rhythm alterations and contractile dysfunction in adult ventricular cardiomyocytes. *Nephrol Dial Transplant*. 2019;34:1864–1875.
138. Mehta R, Cai X, Hodakowski A, Lee J, Leonard M, Ricardo A, Chen J, Hamm L, Sondheimer J, Dobre M, et al. Fibroblast growth factor 23 and anemia in the chronic renal insufficiency cohort study. *Clin J Am Soc Nephrol*. 2017;12:1795–1803.
139. Dong QB, Tang YH, Wang WX, Wu YB, Han L, Li JX, Hong K, Wu YQ, Wu QH, Cheng XS. [Relationship between FGF23/FGFR4 expression in atrial tissue and atrial fibrosis in patients with atrial fibrillation]. *Zhonghua Yi Xue Za Zhi*. 2018;98:1003–1007.
140. Ferrari SL, Bonjour JP, Rizzoli R. Fibroblast growth factor-23 relationship to dietary phosphate and renal phosphate handling in healthy young men. *J Clin Endocrinol Metab*. 2005;90:1519–1524.
141. Burnett SM, Gunawardene SC, Bringham FR, Juppner H, Lee H, Finkelstein JS. Regulation of C-terminal and intact FGF-23 by dietary phosphate in men and women. *J Bone Miner Res*. 2006;21:1187–1196.
142. Scanni R, vonRotz M, Jehle S, Hulter HN, Krapf R. The human response to acute enteral and parenteral phosphate loads. *J Am Soc Nephrol*. 2014;25:2730–2739.
143. Antonucci DM, Yamashita T, Portale AA. Dietary phosphorus regulates serum fibroblast growth factor-23 concentrations in healthy men. *J Clin Endocrinol Metab*. 2006;91:3144–3149.
144. Moe SM, Zidehsarai MP, Chambers MA, Jackman LA, Radcliffe JS, Trevino LL, Donahue SE, Asplin JR. Vegetarian compared with meat dietary protein source and phosphorus homeostasis in chronic kidney disease. *Clin J Am Soc Nephrol*. 2011;6:257–264.
145. Di Iorio B, Di Micco L, Torraca S, Sirico ML, Russo L, Pota A, Mirengi F, Russo D. Acute effects of very-low-protein diet on FGF23 levels: a randomized study. *Clin J Am Soc Nephrol*. 2012;7:581–587.
146. Sigrist M, Tang M, Beaulieu M, Espino-Hernandez G, Er L, Djurdjev O, Levin A. Responsiveness of FGF-23 and mineral metabolism to altered dietary phosphate intake in chronic kidney disease (CKD): results of a randomized trial. *Nephrol Dial Transplant*. 2013;28:161–169.
147. Rodriguez-Ortiz ME, Diaz-Tocados JM, Munoz-Castaneda JR, Herencia C, Pineda C, Martinez-Moreno JM, Montes de Oca A, Lopez-Baltanas R, Alcalá-Diaz J, Ortiz A, et al. Inflammation both increases and causes resistance to FGF23 in normal and uremic rats. *Clin Sci*. 2020;134:15–32.
148. Oliveira RB, Cancela AL, Gracioli FG, Dos Reis LM, Draibe SA, Cuppari L, Carvalho AB, Jorgetti V, Canziani ME, Moyses RM. Early control of PTH and FGF23 in normophosphatemic CKD patients: a new target in CKD-MBD therapy? *Clin J Am Soc Nephrol*. 2010;5:286–291.
149. Block GA, Wheeler DC, Persky MS, Kestenbaum B, Ketteler M, Spiegel DM, Allison MA, Asplin J, Smits G, Hoofnagle AN, et al. Effects of phosphate binders in moderate CKD. *J Am Soc Nephrol*. 2012;23:1407–1415.
150. Chue CD, Townend JN, Moody WE, Zehnder D, Wall NA, Harper L, Edwards NC, Steeds RP, Ferro CJ. Cardiovascular effects of sevelamer in stage 3 CKD. *J Am Soc Nephrol*. 2013;24:842–852.
151. Rodelo-Haad C, Rodriguez-Ortiz ME, Martin-Malo A, Pendon-Ruiz de Mier MV, Aguera ML, Munoz-Castaneda JR, Soriano S, Caravaca F, Alvarez-Lara MA, Felsenfeld A, et al. Phosphate control in reducing FGF23 levels in hemodialysis patients. *PLoS One*. 2018;13:e0201537.
152. Sprague SM, Ketteler M, Covic AC, Floege J, Rakov V, Walpen S, Rastogi A. Long-term efficacy and safety of sucroferric oxyhydroxide in African American dialysis patients. *Hemodial Int*. 2018;22:480–491.
153. Shimada T, Yamazaki Y, Takahashi M, Hasegawa H, Urakawa I, Oshima T, Ono K, Kakitani M, Tomizuka K, Fujita T, et al. Vitamin D receptor-independent FGF23 actions in regulating phosphate and vitamin D metabolism. *Am J Physiol Renal Physiol*. 2005;289:F1088–1095.
154. Rodriguez-Ortiz ME, Lopez I, Munoz-Castaneda JR, Martinez-Moreno JM, Ramirez AP, Pineda C, Canalejo A, Jaeger P, Aguilera-Tejero E, Rodriguez M, et al. Calcium deficiency reduces circulating levels of FGF23. *J Am Soc Nephrol*. 2012;23:1190–1197.

155. Shahbazian H, Zafar Mohtashami A, Ghorbani A, Abbaspour MR, Belladi Musavi SS, Hayati F, Lashkarara GR. Oral nicotinamide reduces serum phosphorus, increases HDL, and induces thrombocytopenia in hemodialysis patients: a double-blind randomized clinical trial. *Nefrologia*. 2011;31:58–65.
156. Labonte ED, Carreras CW, Leadbetter MR, Kozuka K, Kohler J, Koo-McCoy S, He L, Dy E, Black D, Zhong Z, et al. Gastrointestinal inhibition of sodium-hydrogen exchanger 3 reduces phosphorus absorption and protects against vascular calcification in CKD. *J Am Soc Nephrol*. 2015;26:1138–1149.
157. Block GA, Rosenbaum DP, Yan A, Greasley PJ, Chertow GM, Wolf M. The effects of tenapanor on serum fibroblast growth factor 23 in patients receiving hemodialysis with hyperphosphatemia. *Nephrol Dial Transplant*. 2019;34:339–346.
158. Block GA, Rosenbaum DP, Yan A, Chertow GM. Efficacy and safety of tenapanor in patients with hyperphosphatemia receiving maintenance hemodialysis: a randomized phase 3 trial. *J Am Soc Nephrol*. 2019;30:641–652.
159. Ix JH, Isakova T, Larive B, Raphael KL, Raj DS, Cheung AK, Sprague SM, Fried LF, Gassman JJ, Middleton JP, et al. Effects of nicotinamide and lanthanum carbonate on serum phosphate and fibroblast growth factor-23 in CKD: the COMBINE trial. *J Am Soc Nephrol*. 2019;30:1096–1108.
160. Marks J, Churchill LJ, Srai SK, Biber J, Murer H, Jaeger P, Debnam ES, Unwin RJ, Epithelial T, Cell Biology G. Intestinal phosphate absorption in a model of chronic renal failure. *Kidney Int*. 2007;72:166–173.
161. Sabbagh Y, O'Brien SP, Song W, Boulanger JH, Stockmann A, Arbeeny C, Schiavi SC. Intestinal npt2b plays a major role in phosphate absorption and homeostasis. *J Am Soc Nephrol*. 2009;20:2348–2358.
162. Giral H, Caldas Y, Sutherland E, Wilson P, Breusegem S, Barry N, Blaine J, Jiang T, Wang XX, Levi M. Regulation of rat intestinal Na-dependent phosphate transporters by dietary phosphate. *Am J Physiol Renal Physiol*. 2009;297:F1466–1475.
163. Lau WL, Leaf EM, Hu MC, Takeno MM, Kuro-o M, Moe OW, Giachelli CM. Vitamin D receptor agonists increase klotho and osteopontin while decreasing aortic calcification in mice with chronic kidney disease fed a high phosphate diet. *Kidney Int*. 2012;82:1261–1270.
164. Ritter CS, Zhang S, Delmez J, Finch JL, Slatopolsky E. Differential expression and regulation of Klotho by paricalcitol in the kidney, parathyroid, and aorta of uremic rats. *Kidney Int*. 2015;87:1141–1152.
165. Teng M, Wolf M, Ofsthun MN, Lazarus JM, Hernan MA, Camargo CA Jr, Thadhani R. Activated injectable vitamin D and hemodialysis survival: a historical cohort study. *J Am Soc Nephrol*. 2005;16:1115–1125.
166. Shoben AB, Rudser KD, de Boer IH, Young B, Kestenbaum B. Association of oral calcitriol with improved survival in nondialyzed CKD. *J Am Soc Nephrol*. 2008;19:1613–1619.
167. Thadhani R, Appelbaum E, Pritchett Y, Chang Y, Wenger J, Tamez H, Bhan I, Agarwal R, Zoccali C, Wanner C, et al. Vitamin D therapy and cardiac structure and function in patients with chronic kidney disease: the PRIMO randomized controlled trial. *JAMA*. 2012;307:674–684.
168. Wetmore JB, Liu S, Krebill R, Menard R, Quarles LD. Effects of cinacalcet and concurrent low-dose vitamin D on FGF23 levels in ESRD. *Clin J Am Soc Nephrol*. 2010;5:110–116.
169. Koizumi M, Komaba H, Nakanishi S, Fujimori A, Fukagawa M. Cinacalcet treatment and serum FGF23 levels in haemodialysis patients with secondary hyperparathyroidism. *Nephrol Dial Transplant*. 2012;27:784–790.
170. Kim HJ, Kim H, Shin N, Na KY, Kim YL, Kim D, Chang JH, Song YR, Hwang YH, Kim YS, et al. Cinacalcet lowering of serum fibroblast growth factor-23 concentration may be independent from serum Ca, P, PTH and dose of active vitamin D in peritoneal dialysis patients: a randomized controlled study. *BMC Nephrol*. 2013;14:112.
171. Sprague SM, Wetmore JB, Gurevich K, Da Roza G, Buerkert J, Reiner M, Goodman W, Cooper K. Effect of cinacalcet and Vitamin D analogs on fibroblast growth factor-23 during the treatment of secondary hyperparathyroidism. *Clin J Am Soc Nephrol*. 2015;10:1021–1030.
172. Block GA, Bushinsky DA, Cunningham J, Drueke TB, Ketteler M, Kewalramani R, Martin KJ, Mix TC, Moe SM, Patel UD, et al. Effect of etelcalcetide vs placebo on serum parathyroid hormone in patients receiving hemodialysis with secondary hyperparathyroidism: two randomized clinical trials. *JAMA*. 2017;317:146–155.
173. Charytan C, Coburn JW, Chonchol M, Herman J, Lien YH, Liu W, Klassen PS, McCary LC, Pichette V. Cinacalcet hydrochloride is an effective treatment for secondary hyperparathyroidism in patients with CKD not receiving dialysis. *Am J Kidney Dis*. 2005;46:58–67.
174. Chonchol M, Locatelli F, Abboud HE, Charytan C, de Francisco AL, Jolly S, Kaplan M, Roger SD, Sarkar S, Albizem MB, et al. A randomized, double-blind, placebo-controlled study to assess the efficacy and safety of cinacalcet HCl in participants with CKD not receiving dialysis. *Am J Kidney Dis*. 2009;53:197–207.
175. Zaritsky J, Rastogi A, Fischmann G, Yan J, Kleinman K, Chow G, Gales B, Salusky IB, Wesseling-Perry K. Short daily hemodialysis is associated with lower plasma FGF23 levels when compared with conventional hemodialysis. *Nephrol Dial Transplant*. 2014;29:437–441.
176. Barros X, Torregrosa JV, Martinez de Osaba MJ, Casals G, Paschoalin R, Duran CE, Campistol JM. Earlier decrease of FGF-23 and less hypophosphatemia in preemptive kidney transplant recipients. *Transplantation*. 2012;94:830–836.
177. David V, Francis C, Babitt JL. Ironing out the cross talk between FGF23 and inflammation. *Am J Physiol Renal Physiol*. 2017;312:F1–F8.
178. Babitt JL, Sitaru D. Crosstalk between fibroblast growth factor 23, iron, erythropoietin, and inflammation in kidney disease. *Curr Opin Nephrol Hypertens*. 2019;28:304–310.
179. Block GA, Fishbane S, Rodriguez M, Smits G, Shemesh S, Pergola PE, Wolf M, Chertow GM. A 12-week, double-blind, placebo-controlled trial of ferric citrate for the treatment of iron deficiency anemia and reduction of serum phosphate in patients with CKD Stages 3-5. *Am J Kidney Dis*. 2015;65:728–736.
180. Block GA, Pergola PE, Fishbane S, Martins JG, LeWinter RD, Uhlig K, Neylan JF, Chertow GM. Effect of ferric citrate on serum phosphate and fibroblast growth factor 23 among patients with nondialysis-dependent chronic kidney disease: path analyses. *Nephrol Dial Transplant*. 2019;34:1115–1124.
181. Yoon HE, Ghee JY, Piao S, Song JH, Han DH, Kim S, Ohashi N, Kobori H, Kuro-o M, Yang CW. Angiotensin II blockade upregulates the expression of Klotho, the anti-ageing gene, in an experimental model of chronic cyclosporine nephropathy. *Nephrol Dial Transplant*. 2011;26:800–813.
182. Narumiya H, Sasaki S, Kuwahara N, Irie H, Kusaba T, Kameyama H, Tamagaki K, Hata T, Takeda K, Matsubara H. HMG-CoA reductase inhibitors up-regulate anti-aging klotho mRNA via RhoA inactivation in IMCD3 cells. *Cardiovasc Res*. 2004;64:331–336.
183. Yang HC, Deleuze S, Zuo Y, Potthoff SA, Ma LJ, Fogo AB. The PPARγ agonist pioglitazone ameliorates aging-related progressive renal injury. *J Am Soc Nephrol*. 2009;20:2380–2388.
184. Matsubara T, Miyaki A, Akazawa N, Choi Y, Ra SG, Tanahashi K, Kumagai H, Oikawa S, Maeda S. Aerobic exercise training increases plasma Klotho levels and reduces arterial stiffness in postmenopausal women. *Am J Physiol Heart Circ Physiol*. 2014;306:H348–355.
185. Tan SJ, Chu MM, Toussaint ND, Cai MM, Hewitson TD, Holt SG. High-intensity physical exercise increases serum alpha-klotho levels in healthy volunteers. *J Circ Biomark*. 2018;7:1849454418794582.
186. Bergwitz C, Juppner H. Phosphate sensing. *Adv Chronic Kidney Dis*. 2011;18:132–144.
187. Bon N, Frangi G, Sourice S, Guicheux J, Beck-Cormier S, Beck L. Phosphate-dependent FGF23 secretion is modulated by PIT2/Slc20a2. *Mol Metab*. 2018;11:197–204.
188. Shalhoub V, Shatzen EM, Ward SC, Davis J, Stevens J, Bi V, Renshaw L, Hawkins N, Wang W, Chen C, et al. FGF23 neutralization improves chronic kidney disease-associated hyperparathyroidism yet increases mortality. *J Clin Invest*. 2012;122:2543–2553.
189. Hasegawa H, Nagano N, Urakawa I, Yamazaki Y, Iijima K, Fujita T, Yamashita T, Fukumoto S, Shimada T. Direct evidence for a causative role of FGF23 in the abnormal renal phosphate handling and vitamin D metabolism in rats with early-stage chronic kidney disease. *Kidney Int*. 2010;78:975–980.
190. Perwad F, Portale AA. Burosumab therapy for X-linked hypophosphatemia and therapeutic implications for CKD. *Clin J Am Soc Nephrol*. 2019;14:1097–1099.
191. Di Marco GS, Reuter S, Kentrup D, Grabner A, Amaral AP, Fobker M, Stypmann J, Pavenstadt H, Wolf M, Faul C, et al. Treatment of established left ventricular hypertrophy with fibroblast growth factor receptor blockade in an animal model of CKD. *Nephrol Dial Transplant*. 2014;29:2028–2035.
192. Yanochko GM, Vitisky A, Heyen JR, Hirakawa B, Lam JL, May J, Nichols T, Sace F, Trajkovic D, Blasi E. Pan-FGFR inhibition leads to

- blockade of FGF23 signaling, soft tissue mineralization, and cardiovascular dysfunction. *Toxicol Sci.* 2013;135:451–464.
193. Katoh M. Therapeutics targeting FGF signaling network in human diseases. *Trends Pharmacol Sci.* 2016;37:1081–1096.
 194. Doi S, Zou Y, Togao O, Pastor JV, John GB, Wang L, Shiizaki K, Gotschall R, Schiavi S, Yorioka N, et al. Klotho inhibits transforming growth factor-beta1 (TGF-beta1) signaling and suppresses renal fibrosis and cancer metastasis in mice. *J Biol Chem.* 2011;286:8655–8665.
 195. Shi M, Flores B, Gillings N, Bian A, Cho HJ, Yan S, Liu Y, Levine B, Moe OW, Hu MC. alphaKlotho mitigates progression of AKI to CKD through activation of autophagy. *J Am Soc Nephrol.* 2016;27:2331–2345.
 196. Hu MC, Shi M, Gillings N, Flores B, Takahashi M, Kuro OM, Moe OW. Recombinant alpha-Klotho may be prophylactic and therapeutic for acute to chronic kidney disease progression and uremic cardiomyopathy. *Kidney Int.* 2017;91:1104–1114.
 197. Kuro OM. The Klotho proteins in health and disease. *Nat Rev Nephrol.* 2019;15:27–44.
 198. Xie J, Yoon J, An SW, Kuro-o M, Huang CL. Soluble Klotho protects against uremic cardiomyopathy independently of fibroblast growth factor 23 and phosphate. *J Am Soc Nephrol.* 2015;26:1150–1160.
 199. Suassuna PGA, Cherem PM, de Castro BB, Maquigussa E, Cenedeze MA, Lovisi JCM, Custodio MR, Sanders-Pinheiro H, de Paula RB. Highlight article: alphaKlotho attenuates cardiac hypertrophy and increases myocardial fibroblast growth factor 21 expression in uremic rats. *Exp Biol Med (Maywood).* 2020;245:66–78.
 200. Ding J, Tang Q, Luo B, Zhang L, Lin L, Han L, Hao M, Li M, Yu L, Li M. Klotho inhibits angiotensin II-induced cardiac hypertrophy, fibrosis, and dysfunction in mice through suppression of transforming growth factor-beta1 signaling pathway. *Eur J Pharmacol.* 2019;859:172549.
 201. King GD, Chen C, Huang MM, Zeldich E, Brazee PL, Schuman ER, Robin M, Cuny GD, Glicksman MA, Abraham CR. Identification of novel small molecules that elevate Klotho expression. *Biochem J.* 2012;441:453–461.