

RESEARCH

Open Access



Transplantation of human induced pluripotent stem cell-derived cardiomyocytes improves myocardial function and reverses ventricular remodeling in infarcted rat hearts

Xumin Guan^{1†}, Wanzi Xu^{2†}, He Zhang^{3†}, Qian Wang⁴, Jiuyang Yu⁴, Ruyi Zhang⁵, Yamin Chen⁴, Yunlong Xia¹, Jiaxian Wang^{4,6*} and Dongjin Wang^{7*}

Abstract

Background: Human-induced pluripotent stem cell-derived cardiomyocytes (iPSC-CMs) have shed great light on cardiac regenerative medicine and specifically myocardial repair in heart failure patients. However, the treatment efficacy and the survival of iPSC-CMs in vivo after transplantation have yielded inconsistent results.

Objectives: The objective of this study was to evaluate the ability of human iPSC-CMs to improve myocardial function in a rat postinfarction heart failure model.

Methods: Eight-week-old male Sprague-Dawley rats were randomly selected to receive an intramyocardial injection of 5% albumin solution with or without 1×10^7 human iPSC-CMs 10 days after undergoing left anterior descending (LAD) coronary artery ligation. Cyclosporine A and methylprednisolone were administered before iPSC-CM injection and until the rats were killed to prevent graft rejection. Cardiac function was evaluated by echocardiography. The survival of grafted cardiomyocytes was confirmed by observing the fluorescent cell tracer Vybrant™ CM-Dil or expression of the enhanced green fluorescent protein (eGFP) in transplanted cells, or survival was demonstrated by polymerase chain reaction (PCR)-based detection of human mitochondrial DNA. Sirius red stain was used to evaluate the fibrosis ratio. Hematoxylin-eosin staining was used to observe the formation of teratomas.

(Continued on next page)

* Correspondence: wangjx@helpsci.com.cn; wangdongjin@njgly.com

[†]Xumin Guan, Wanzi Xu and He Zhang contributed equally to this work.

⁴HELP Therapeutics, Nanjing 211166, Jiangsu, China

⁷Department of Cardio-Thoracic Surgery, Nanjing Drum Tower Hospital Affiliated to Medical School of Nanjing University, Nanjing, China

Full list of author information is available at the end of the article



(Continued from previous page)

Results: Four weeks after intramyocardial injection of iPSC-CMs, animals undergoing iPSC-CM transplantation had lower mortality than the control group. Animals injected with cell-free solution (control group) demonstrated significant left ventricular (LV) functional deterioration, whereas grafting of iPSC-CMs attenuated this remodeling process. In the control group, the ejection fraction deteriorated by 10.11% (from 46.36 to 41.67%), and fractional shortening deteriorated by 9.23% (from 24.37 to 22.12%) by 4 weeks. In the iPSC-CM injection group, the ejection fraction improved by 18.86% (from 44.09 to 52.41%), and fractional shortening improved by 23.69% (from 23.08 to 28.54%). Cell labeling, tracking, and molecular biology techniques indicated that the grafted cardiomyocytes survived in the rat heart 1 month after iPSC-CM transplantation. Myocardial fibrosis was also attenuated in the iPSC-CM treatment group.

Conclusions: Human iPSC-CM grafts survived in infarcted rat hearts and restored myocardial function 4 weeks after transplantation. Cell replacement therapy also reversed ventricular remodeling, indicating the potential of iPSC-CMs for cardiac repair strategies.

Keywords: Human induced pluripotent stem cell, Cardiomyocytes, Regenerative medicine, Remodeling, Heart failure

Background

Heart failure remains the leading cause of morbidity and mortality worldwide [1]. In patients with chronic heart failure, especially in those with III-IV symptoms, as defined by the New York Heart Association, the prognosis is extremely poor due to irreversibly impaired left ventricular function [2]. The treatment of heart failure remains a challenging problem as conventional treatments (drug therapy, interventional therapy, and surgery) have difficulty in restoring the function of the heart. Myocardial infarction (MI), the most common heart disease, is characterized by a significant reduction in the number of functional cardiomyocytes and leads to the development of progressive heart failure. Adult hearts have little ability to regenerate [3] and traditional treatments fail to address the fundamental problem of muscle deficiency. Heart regenerative therapy, such as transplantation of myocytes [4] and cardiomyocytes to replace lost cells, has become a new strategy for the treatment of heart failure caused by MI [5].

Pluripotent stem cells (PSCs), including embryonic stem cells (ESCs) and induced pluripotent stem cells (iPSCs), are potential sources of therapeutic cardiomyocytes [6–8]. They have the capacity for unlimited proliferation in vitro while maintaining the potential to differentiate into derivatives of the three germ layers. A well-established method of cardiomyocyte differentiation from PSCs provides an ideal source of cardiomyocytes and makes regenerative therapy for myocardial muscle damage a promising strategy. The methods of cardiomyocyte differentiation, purification, and maturation from iPSCs or ESCs have been established both by our lab [9–12] and other labs [13–17]. Recently, transplantation of human ESC-derived cardiomyocytes (ESC-CMs) has been proven to significantly improve cardiac function in infarcted rat and nonhuman primate hearts [18,

19] due to the capacity of PSC-CMs to remuscularize the infarcted hearts and form electromechanical junctions with the host hearts [15]. Human iPSC-CMs have great potential in disease treatment because they avoid the social ethical issues of ESCs and avoid the possibility of immune rejection [20]. Although some investigators reported that transplantation of iPSC-CMs reduced remodeling of the heart after ischemic damage [21–24], the field is still at the preclinical stage due to technical and surgical hurdles. In addition, the treatment efficacy and the survival of iPSC-CMs in vivo after transplantation is debatable. Chow et al. demonstrated that no grafted iPSC-CMs were detected after 1 month of transplantation [22]. In the present study, we aimed to evaluate the ability of human iPSC-CM transplantation to improve myocardial function in the rat MI model and to determine the fate of transplanted cells in the rat heart.

Methods

Differentiation of iPSC-CMs and cell preparation

Human iPSC line was derived from a healthy man (32 years old) and transduced with Oct3/4–Sox2, cMyc, and Klf4. Informed consent was obtained from the donor prior to all experiments. The iPSC reprogramming and cardiomyocytes manufacturing were conducted under GMP-grade lab at HELP Therapeutics. Undifferentiated human iPSCs were grown to 90% confluence and subsequently differentiated into beating cardiomyocytes. In brief, on day 0 and day 1, iPSCs were given #1 medium (RPMI 1640 [Gibco] and B27 supplement minus insulin [Gibco]) supplemented with 6 μ M CHIR-99021 [Sigma-Aldrich], which is a selective inhibitor of glycogen synthase kinase 3 β that activates the canonical Wnt signaling pathway. On day 2, the medium was replaced with #1 medium without CHIR99021. On day 3 and day 4, cells were supplemented with #1 medium with 5 μ M of IWR-1 [Sigma-Aldrich],

which is a Wnt antagonist. Then, the medium was replaced with #1 medium every day until day 8, and the medium was replaced with #2 medium (RPMI 1640 [Gibco] and B27 supplement [Gibco]) every other day. Usually, the cells began to have spontaneous contractions after 8–10 days of differentiation. On days 16–20 of differentiation, purified iPSC-CMs were dissociated and 1×10^7 cells were cryopreserved per cryogenic tube. Cryopreserved cardiomyocytes were thawed in a 37 °C water bath (for approximately 2 min) and suspended in 75 μ l 5% albumin solution before transplantation.

Animal model of MI and cell transplantation

The experimental flow chart is shown in supplementary Figure 1. After undergoing a left thoracotomy, 8-week-old male Sprague-Dawley rats (approximately 250 g) underwent MI by ligation of the left anterior descending (LAD) coronary artery 10 days before receiving an injection of cells. Electrocardiogram (ECG) data were used to confirm the establishment of the MI model by ST segment elevation (Fig. 2c, d). Ten days after MI, the rats underwent echocardiography, and a second thoracotomy was performed in the rats that met the inclusion criteria: Ejection fraction was reduced by between 15 and 50%. Then, 1×10^7 human iPSC-CMs in 5% albumin solution or a control solution containing only 5% albumin were transplanted to the infarcted area and infarcted margins at two to three different sites. Two groups were studied: (1) a control group in which 5% albumin solution (75 μ l) was injected ($n = 13$) and (2) a group in which 1.0×10^7 iPSC-CMs in 5% albumin solution were grafted ($n = 18$). To prevent graft rejection, animals from all groups were treated with cyclosporine A (15 mg/kg/day) and methylprednisolone (2 mg/kg/day) from the day before iPSC-CM delivery until rats were dissected. Most rat hearts were harvested 4 weeks later (day 28).

Echocardiography

As shown in supplementary Figure 1, transthoracic echocardiography was performed at baseline (before MI model established), day 0 (10 days after LAD coronary artery ligation and before iPSC-CM grafting), and day 28 (4 weeks after iPSC-CM grafting) using the Vevo LAB 3.1.0 (FUJIFILM VisualSonics, Inc.). The following parameters were measured: (1) left ventricular end-diastolic and end-systolic diameters (LVEDD and LVESD, respectively); (2) left ventricular end-diastolic and end-systolic volume (LVEDV and LVESV, respectively); (3) ejection fraction (EF); (4) fractional shortening (FS); (5) left ventricular end-diastolic and end-systolic anterior wall thickness. All measurements were averaged over three cardiac cycles and assessed by an experienced operator blinded to the treatment group.

Tracking of iPSC-CMs

To identify the transplanted cells, we used a number of labeling, tracking, and molecular biological techniques: (1) labeling with the fluorescent cell tracer Vybrant™ CM-DiI (5 μ M, Molecular Probes, Invitrogen, V22888); (2) tagging with the genetic marker enhanced green fluorescent protein (eGFP), the introduction of which was achieved using lentiviral transduction; (3) measuring human mitochondrial DNA via polymerase chain reaction (PCR) and qPCR at different times following transplantation (supplementary Figure 1).

Histological examination

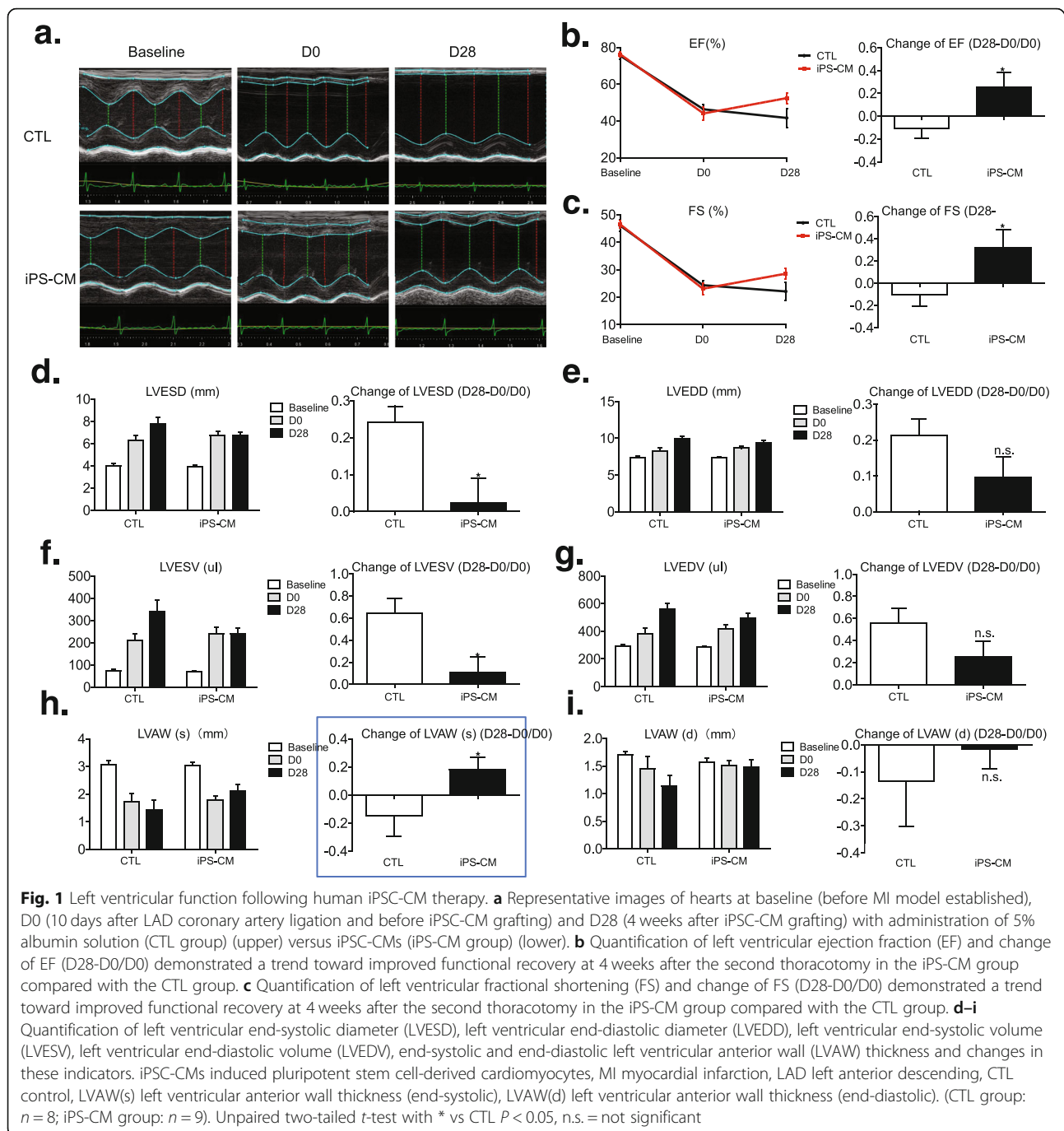
For histological examination, hearts were fixed with 4% paraformaldehyde in PBS for Sirius red staining or HE staining and cryosectioned for immunostaining. For immunostaining, fixed hearts were immersed in 30% sucrose overnight, embedded in an optimal cutting temperature compound, frozen, and cryosectioned (4.5- μ m sections). Immunostaining was performed, and primary antibodies were used at dilutions of 1:200 for anti-sarcomeric alpha-actinin (Abcam, ab137346) and 1:100 for anti-GFP (Abcam, ab1218). Secondary antibodies, including goat anti-rabbit IgG (H + L) (Alexa Fluor Plus 555, Invitrogen, A32732), were used at dilutions of 1:500 for detecting alpha-actinin, and goat anti-mouse IgG (H + L) (Thermo Fisher, F2761) was used at dilutions of 1:500 for detecting eGFP. Slides were imaged with an inverted fluorescence microscope (Leica inverted microscope DMi8).

PCR and qPCR analysis

The rats were dissected at 24 h, 7 days, and 28 days after cell grafting. For PCR and qPCR, hearts and other organs were frozen in liquid nitrogen. The presence of iPSC-CMs within the rat hearts or other organs was evaluated using PCR and qPCR-based amplification of human mitochondria DNA. Genomic DNA was produced using the DNeasy Blood & Tissue Kit (Qiagen, 69504). PCR was carried out using Platinum™ Green Hot Start PCR Master Mix (Invitrogen™, 13001012). The sequence of the forward primer was CACCGGCGCA GTCATTCTCATA, and the reverse primer sequence was GAGTCCTGTAAGTAGGAGA.

Statistical analysis

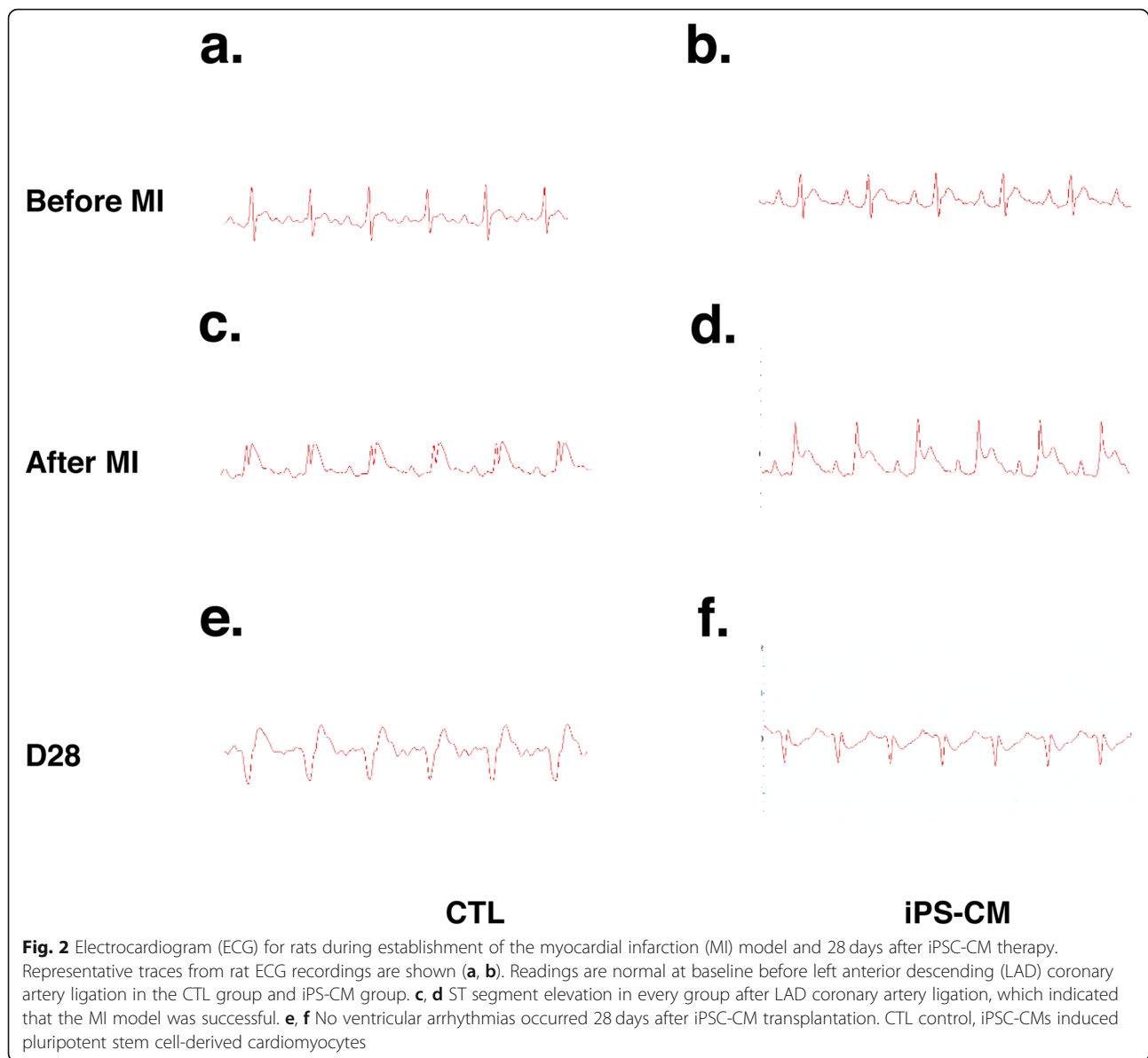
Data are expressed as the mean \pm standard error of the mean (SEM). We tested data for normality by Shapiro-Wilk test. Independent samples *T* test was used to assess the difference between the two groups. Statistical analyses were performed using SPSS 13.0 (SPSS Inc., Chicago, IL). $P < 0.05$ (two-tailed) was considered to be statistically significant.



Results

A total of 46 rats underwent MI surgery by ligation of the LAD coronary artery; six died after the first operation and nine rats were excluded because the results of the transthoracic echocardiography did not meet our inclusion criteria before cell grafting (eight rats: ejection fraction reduced $< 15\%$, one rat: ejection fraction reduced $> 50\%$). Hence, 31 rats underwent a second thoracotomy, of which 18 were placed in the iPSC-CM group, involving transplantation with 1.0×10^7 iPSC-

CMs; 13 were placed in the control group and were injected with a 5% albumin solution. In the control group, two rats died within 24 h, and another three died within 15 days of the second operation (38.46% postoperative mortality). In the iPSC-CM group, three rats were killed 24 h and 7 days after cell transplantation. In the other 12 rats, one died on the fourth day because of a cotton ball left in the chest, and another two died during the 15 days that followed the second operation (25% postoperative mortality).



iPSC-CM injection improves cardiac function

At 1 month after ligation, 5% albumin solution-treated infarcted rats had a significantly decreased left ventricular ejection fraction (LVEF) of 10.11% (from 46.36 to 41.67%) (Fig. 1a, b) and decreased fractional shortening (FS) of 9.23% (from 24.37 to 22.12%) (Fig. 1a, c). While animals injected with iPSC-CMs attenuated this remodeling process, improving the ejection fraction by 18.86% (from 44.09 to 52.41) (Fig. 1a, b), fractional shortening improved by 23.69% (from 23.08 to 28.54%) (Fig. 1a, c). Moreover, left ventricular end-systolic diameter (LVESD) and left ventricular end-systolic volume (LVESV) also had a significant increase in the control group and showed no significant increase in the iPSC-CM group (Fig. 1a, d, f). The wall of the infarcted myocardium was significantly less

thick in the control group but was improved in the iPSC-CM group (Fig. 1a, h). Cell therapy tended to attenuate left ventricular end-diastolic diameter (LVEDD) and left ventricular end-diastolic volume (LVEDV) enlargement and increase the wall thickness of the infarcted myocardium in end-diastolic compared with the control group but the difference was not significant (Fig. 1a, e, g, i).

ECG for rats during MI model establishment and 28 days after iPSC-CM therapy

ECG indicated the establishment of the MI model by ST segment elevation after LAD coronary artery ligation (Fig. 2a–d). Twenty-eight days after iPSC-CM transplantation, no ventricular arrhythmias occurred after several minutes of ECG recordings (Fig. 2e, f).

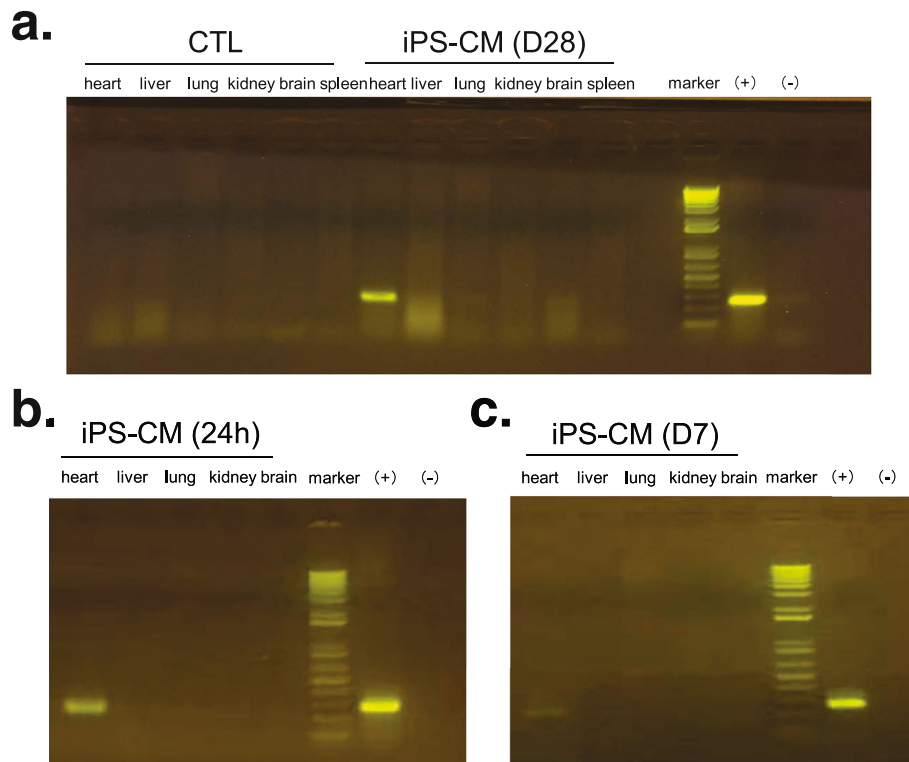


Fig. 3 Detection of human cells within rat hearts and other organs by polymerase chain reaction (PCR) of human mitochondria DNA at different timepoints after cell transplantation. **a** PCR of human mitochondrial DNA in the heart and other organs of rats at 28 days after cell transplantation in the CTL group ($n = 2$) and iPS-CM group ($n = 4$). **b** PCR of human mitochondrial DNA in the heart and other organs of rats at 24 h after cell transplantation in the iPS-CM group ($n = 3$). **c** PCR of human mitochondria DNA in the heart and other organs of rats at 7 days after cell transplantation in the iPS-CM group ($n = 3$). (+) indicates positive control with iPSC-CMs. (-) indicates a negative control with DEPC water. CTL control, iPSC-CMs induced pluripotent stem cell-derived cardiomyocytes

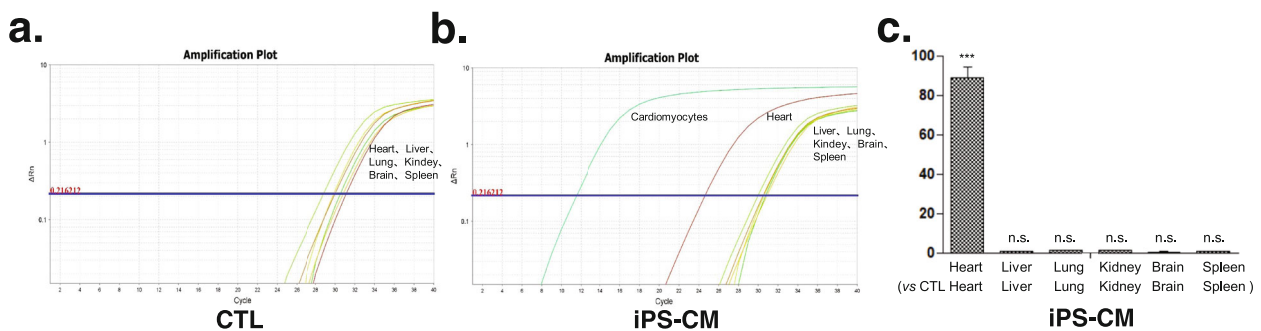
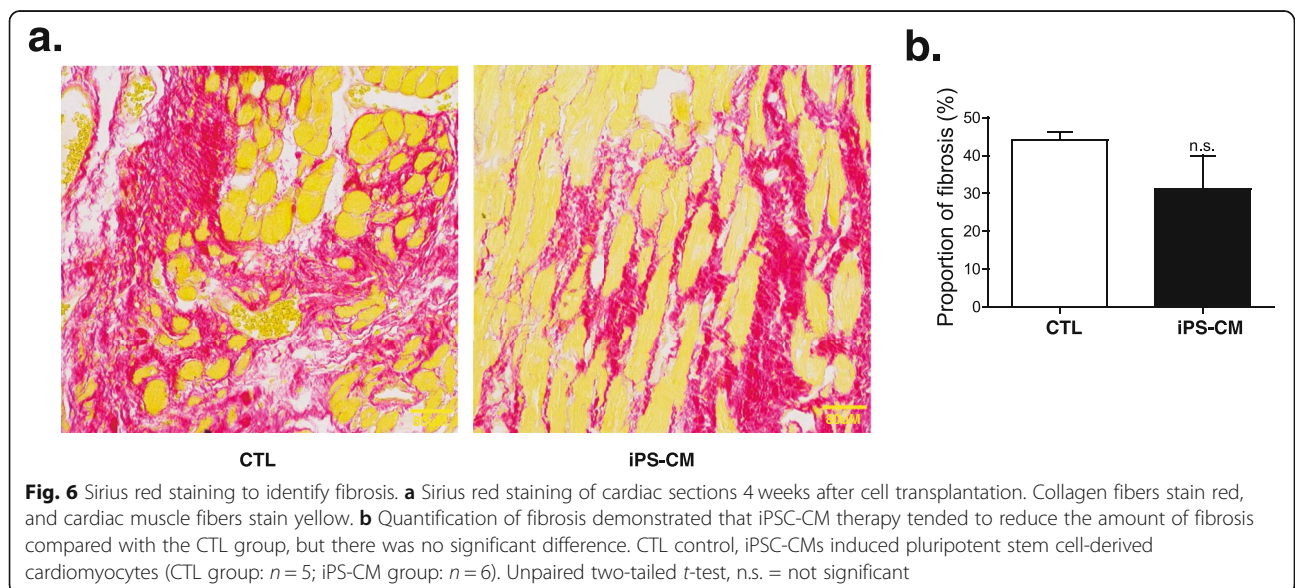
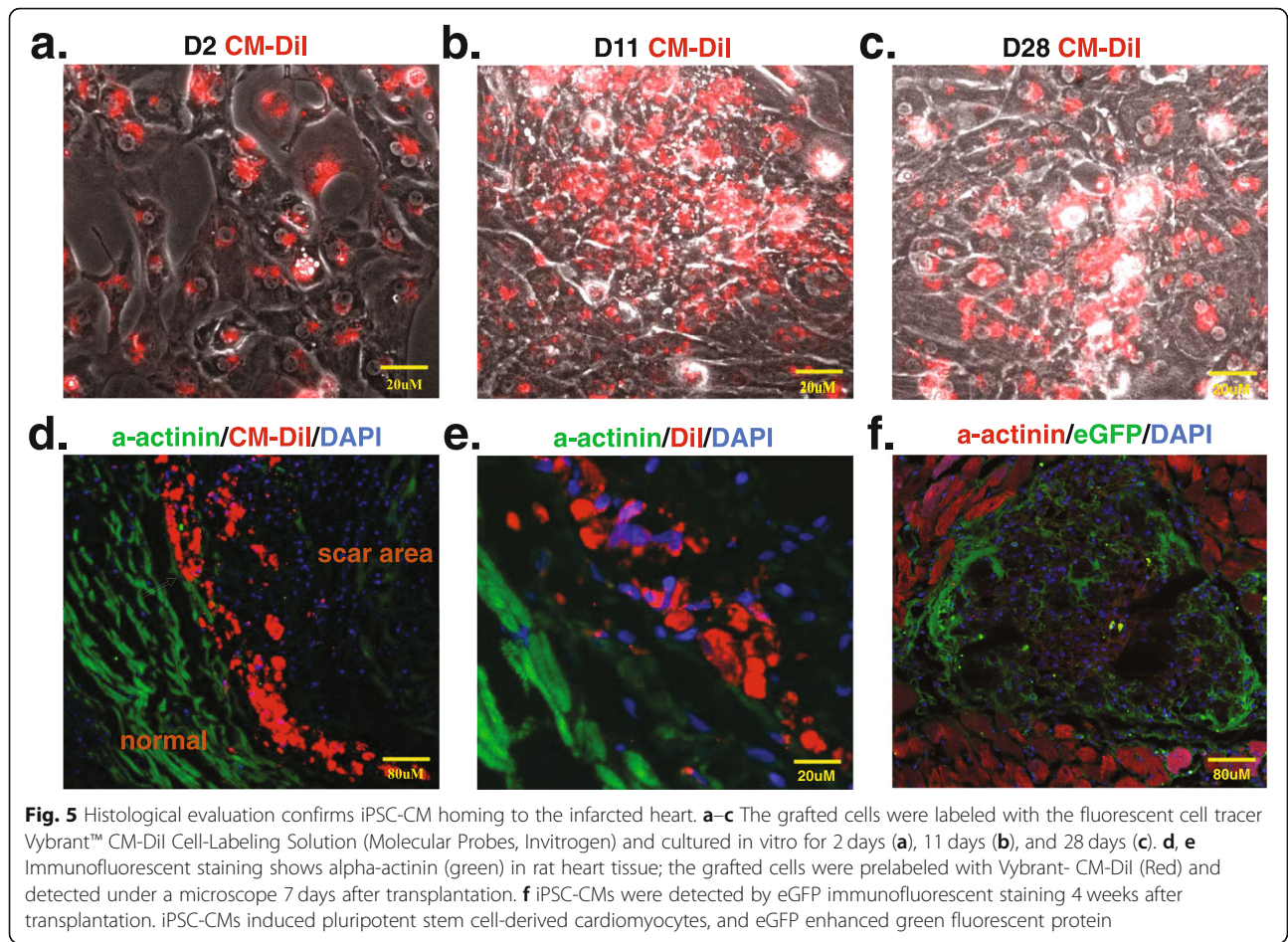


Fig. 4 Quantitative polymerase chain reaction (qPCR) quantification of human mitochondrial DNA confirms the presence of human cells within rat hearts but not other organs 4 weeks after cell transplantation. **a** Plot of SYBR-based human mitochondrial DNA quantification demonstrated human cell distribution in each organ of rats in the CTL group. **b** Plot of SYBR-based human mitochondrial DNA quantification demonstrated human cell distribution in each organ of the iPS-CM group. Cardiomyocytes were used as a positive control. **c** qPCR quantification analysis of human mitochondria DNA demonstrated that human cells survived in rat hearts but not in other organs in the iPS-CM group (vs control group at 4 weeks following iPSC-CM transplantation) ($n = 3$ per group). CTL control, iPSC-CMs induced pluripotent stem cell-derived cardiomyocytes. Unpaired two-tailed t -test with * vs CTL $P < 0.05$, *** vs CTL $P < 0.005$, n.s. = not significant



Distribution of iPSC-CMs within rat hearts and other organs after transplantation

PCR and qPCR-based amplification of the human mitochondria DNA within rat hearts and other organs demonstrated that most organs (liver, lung, kidney, brain, spleen) did not have signs of iPSC-CMs, but positive signals were detected in the heart at 24 h ($n = 3$), 7 days ($n = 3$), and 28 days ($n = 4$) following t0072ansplantation (Fig. 3a–c and Fig. 4a–c).

Histological evaluation of iPSC-CMs surviving in the heart

The grafted cells were labeled with the fluorescent cell tracer Vybrant™ CM-DiI, and almost all cells still had this dye after being cultured in vitro for 28 days (Fig. 5c). To track the injected cells, three rats receiving iPSC-CM injections were dissected after 24 h, and three were dissected 7 days after cell transplantation. At 1 week after cell injection, the grafted cells were detected in the rat heart by Vybrant-CM-DiI prelabeling iPSC-CMs before cell transplantation (Fig. 5d, e). Although we did not detect pre-labeled Vybrant-CM-DiI cells in the rat heart 4 weeks after cell transplantation, confocal laser microscopy confirmed the presence of transplanted cells within the myocardium by eGFP immunofluorescent staining (Fig. 5f).

Sirius red staining and hematoxylin-eosin staining

Fibrosis was evaluated by Sirius red staining (Fig. 6a, b). There was a tendency for the iPSC-CM group to

have a reduced percentage of fibrosis compared with that observed in the control group, but there was no significant difference (Fig. 6b). Hematoxylin-eosin staining demonstrated no teratoma formation within the infarcted area after transplantation (data not shown).

Tumorigenicity study

Tumorigenicity was evaluated by subcutaneous injection of 1×10^7 iPSC-CMs ($n = 13$) in Nude mice. Hela cells (1×10^7 , $n = 12$) were used as positive control. All animals were reevaluated 4 months later. While all mice injected with Hela cells developed tumor at the site of injection (Fig. 7b, d), no rats from iPSC-CM group developed tumors (Fig. 7a, c).

Discussion

In the current study, permanent LAD coronary artery ligation was employed to establish a post-MI heart failure model in rodents. All animals developed pathophysiological changes typical of heart failure, including reduced left ventricular function and dilated cardiac geometry. Our results demonstrated that transplantation with iPSC-CMs not only significantly improved heart function in terms of LVEF and FS but also reduced overall mortality during the observation period compared with that observed in the control animals. Cardiac remodeling, including changes in ventricular volume, thickness and shape of the myocardial wall, was

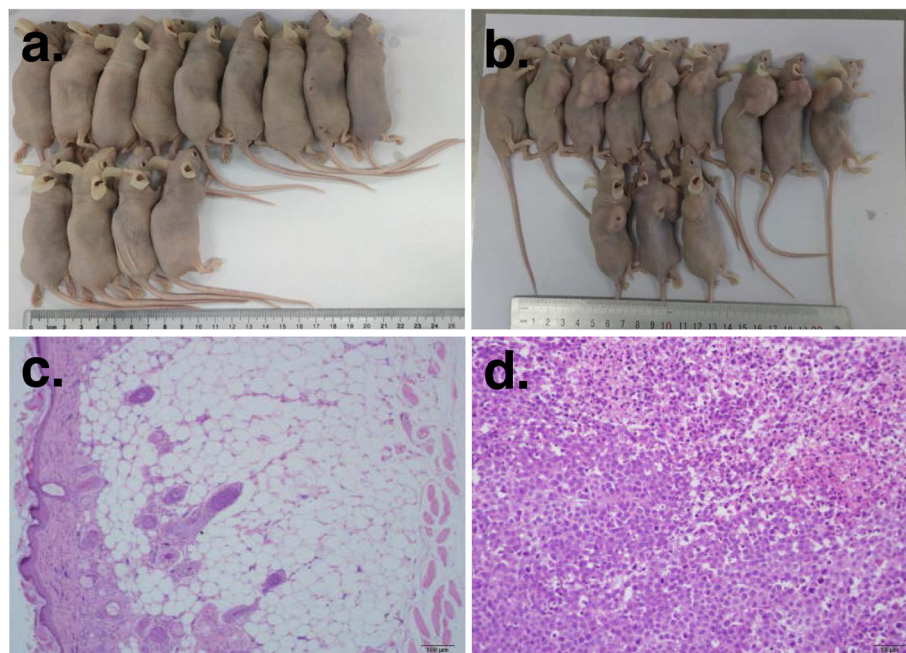


Fig. 7 Tumorigenicity was evaluated by subcutaneous injection of 1×10^7 iPSC-CMs in nude mice. **a** Thirteen Nude mice were injected with 1×10^7 iPSC-CMs and did not develop tumors. **b** Twelve nude mice were injected with Hela cells (1×10^7) and were used as positive control group, which developed tumor at the site of injection. **c, d** Hematoxylin-eosin staining of the injected site in iPSC-CM group (**c**) and positive control group (**d**)

observed in an attempt to compensate for the reduced ventricular function [19, 22, 24]. Interestingly, implantation with iPSC-CMs rescued or even reversed the progression of cardiac remodeling. Compared with the control, the LVESD was significantly reduced after cell therapy. Similarly, left ventricular volume continued to increase throughout the observation period (Fig. 1f) in the control group. However, iPSC-CM transplantation completely stopped the worsening of left ventricular dilation, resulting in a significantly reduced LVESV. Cardiac remodeling is identified as an important marker of mortality [25, 26]. Our results demonstrated an association between higher mortality and the worsening of ventricular dilation.

Despite the promising results of PSC-CMs in heart regeneration [19, 21, 23, 24], the cellular fate of PSC-CMs after implantation has not been thoroughly assessed. Chow et al. indicated that grafted human cells were not able to be detected after iPSC-CM injection [22]. Here, we utilized three methods to monitor the engraftment of iPSC-CMs: the fluorescent cell tracer Vybrant™ CM-DiI, labeling iPSCs with eGFP expression and human mitochondrial DNA detection. The highlight of our study was providing strong evidence that grafts persisted in rat hearts after 1 month and in some individuals even 2 months (data not shown) after transplantation, but the results were based on appropriate usage of immunosuppressive agents. We found that the dose of immunosuppressants was a key factor for cell engraftment in immunocompetent animals. When immunosuppressants were reduced to half dosage, iPSC-CMs could not be detected in rat hearts 1 month after transplantation (data not shown). Four rats were sacrificed at 2 months to study long-term cell engraftment after adequate immunosuppressant treatment. However, cell grafts were only detected in one of the four rats, which may be due to rejection between different species or the position of tissue extraction. It is worth noting that the duration of Vybrant™ in vivo after 1 month remains uncertain, while human mitochondrial DNA detection by PCR is unable to confirm cell viability. In infarcted areas, immunofluorescent staining of eGFP was susceptible to nonspecific signal interference. As such, further imaging techniques, such as improved reporter gene imaging, may be required to identify the fate of stem cells in vivo [27]. Despite the strong association between cell engraftment and heart function improvement demonstrated by our results, the beneficial mechanisms may also involve paracrine effects and angiogenesis [24, 28, 29].

Cardiomyocytes derived from PSCs are a promising source of cells for heart failure therapy. Cell delivery methods were reported to be associated with cell retention [22, 30] as well as potential circulation to other organs. Hou et al. evaluated the short-term fate of peripheral blood mononuclear cells after intramyocardial, intracoronary, and interstitial retrograde coronary venous delivery

in an ischemic swine model and found by whole-body γ -scans that a significant fraction of cells were delivered into the lungs [31] in each delivery method. Improving cell retention in the heart after transplantation is hypothesized to increase therapeutic efficacy. In our study, iPSC-CMs were delivered by direct intramyocardial injection during open-chest surgery, and we did not find cell retention in any organs (liver, lung, kidney, brain, spleen) except heart after 1, 7, and 28 days of cell delivery.

Ventricular arrhythmias, not surprisingly, are not detected in our study. Compared with rat myocytes, human iPSC-CMs possess much slower spontaneous beating rhythm (50–80 bpm) and prolonged action potential duration. Thus, the fast beating rat myocytes overdrives the automaticity of human iPSC-CMs, refraining the implanted cells from eliciting arrhythmogenic ectopic events.

There are several limitations in our study. First, due to technical limitations and the fast beating rate in the rodent heart failure model, MRI was not performed in the current study. However, MRI in future studies may highlight that iPSC-CM transplantation improves myocardial performance by providing infarct size and perfusion defect data. Second, the use of human iPSC-CMs to treat immunocompetent rats may induce severe rejection caused by species differences despite the use of immunosuppressants. Further study may consider either the use of infarcted RNU rats or iPSC-CMs derived from rats to reveal the long-term therapeutic effects of allograft transplantation. Third, although we demonstrated the presence of human iPSC-CMs in rat hearts by several means, future studies are needed to specifically quantify the engraftment and proliferation of cells.

Conclusions

In summary, we report that intramuscular transplantation of human iPSC-CMs improves myocardial function, reverses ventricular remodeling, and reduces mortality in infarcted rats. We also showed that grafted cardiomyocytes can be detected in rat hearts 1 month after transplantation, which highlights the therapeutic potential of iPSC-CMs in myocardial regeneration.

Additional file

Additional file 1 : Figure S1. Experimental flow chart. The myocardial infarction (MI) model was established on day -10. Cell transplantation finished on day 0. Cardiac functional measurements were obtained at baseline, day 0 (before cell transplantation) and day 28 (days after transplantation) using echocardiography. Human cells were tracked by PCR and qPCR-based amplification of the human mitochondrial DNA within rat hearts and other organs at days 1, 7, and 28 after transplantation.

Abbreviations

LAD: Left anterior descending; ECG: Electrocardiogram; EF: Ejection fraction; eGFP: Enhanced green fluorescent protein; ESCs: Embryonic stem cells; ESC-

CMs: ESC-derived cardiomyocytes; FS: Fractional shortening; LVEDD: Left ventricular end-diastolic diameter; LVEDV: Left ventricular end-diastolic volume; LVESD: Left ventricular end-systolic diameter; LVESV: Left ventricular end-systolic volume; LV: Left ventricular; LVAW: Left ventricular anterior wall; iPSC-CMs: Induced pluripotent stem cell-derived cardiomyocytes; MI: Myocardial infarction; PCR: Polymerase chain reaction; PSCs: Pluripotent stem cells

Acknowledgements

We thank all of the participants of the study.

Funding

This work was supported by grants from the National Natural Science Foundation of China (NSFC: 81900253).

Availability of data and materials

The datasets used and/or analyzed during the current study are available from the corresponding author on reasonable request.

Authors' contributions

GX contributed to the design experiments, collection of data, data analysis and interpretation, manuscript writing, and final approval of manuscript; XW and ZH performed the experiments and contributed to the collection of data and data analysis; WQ contributed to the cell preparation; ZR, CY, and YJ performed the experiments and contributed to the collection of data; XY final approval of the manuscript; WJ and WD contributed to the design of the experiments, financial support, provision of study material, data analysis and interpretation, manuscript modifying, and final approval of manuscript. The authors read and approved the final manuscript.

Ethics approval and consent to participate

All animal experiments were approved by the Institutional Animal Care and Use Committee (IACUC-1805001) of Nanjing Medical University and in accordance with the Regulations for the Administration of Affairs Concerning Experimental Animals.

Consent for publication

Not applicable.

Competing interests

The authors declare that they have no competing interests

Publisher's Note

Springer Nature remains neutral with regard to jurisdictional claims in published maps and institutional affiliations.

Author details

¹Department of Cardiology, The First Affiliated Hospital of Dalian Medical University, Dalian 116011, Liaoning, China. ²Department of Thoracic and Cardiovascular Surgery, Nanjing Drum Tower Hospital, Clinical College of Traditional Chinese and Western Medicine, Nanjing University of Chinese Medicine, Nanjing 210008, Jiangsu, China. ³Department of Thoracic and Cardiovascular Surgery, Peking Union Medical College Nanjing Drum Tower Hospital, Nanjing 210008, Jiangsu, China. ⁴HELP Therapeutics, Nanjing 211166, Jiangsu, China. ⁵The Laboratory Animal Center, The First Affiliated Hospital of Nanjing Medical University, Nanjing 210029, Jiangsu, China. ⁶Department of Cardiology, The First Affiliated Hospital of Nanjing Medical University, Nanjing 210029, Jiangsu, China. ⁷Department of Cardio-Thoracic Surgery, Nanjing Drum Tower Hospital Affiliated to Medical School of Nanjing University, Nanjing, China.

Received: 11 November 2019 Revised: 21 January 2020

Accepted: 12 February 2020 Published online: 21 February 2020

References

- Lozano R, Naghavi M, Foreman K, et al. Global and regional mortality from 235 causes of death for 20 age groups in 1990 and 2010: a systematic analysis for the Global Burden of Disease Study 2010. *Lancet*. 2012; 380(9859):2095–128.
- Jones NR, Roalfe AK, Adoki I, et al. Survival of patients with chronic heart failure in the community: a systematic review and meta-analysis. *Eur J Heart Fail*. 2019;21(11):1306–1325.
- Laflamme MA, Murry CE. Heart regeneration. *Nature*. 2011;473(7347):326–35.
- Sawa Y. Surgical regeneration therapy using myoblast sheets for severe heart failure. *Kyobu Geka*. 2017;70(1):9–13.
- Murry CE, Reinecke H, Pabon LM. Regeneration gaps: observations on stem cells and cardiac repair. *J Am Coll Cardiol*. 2006;47(9):1777–85.
- Burridge PW, Keller G, Gold JD, et al. Production of de novo cardiomyocytes: human pluripotent stem cell differentiation and direct reprogramming. *Cell Stem Cell*. 2012;10(1):16–28.
- Takahashi K, Tanabe K, Ohnuki M, et al. Induction of pluripotent stem cells from adult human fibroblasts by defined factors. *Cell*. 2007;131(5):861–72.
- Thomson JA, Itskovitz-Eldor J, Shapiro SS, et al. Embryonic stem cell lines derived from human blastocysts. *Science*. 1998;282(5391):1145–7.
- Wang J, Cui C, Nan H, et al. Graphene sheet-induced global maturation of cardiomyocytes derived from human induced pluripotent stem cells. *ACS Appl Mater Interfaces*. 2017;9(31):25929–40.
- Cui C, Wang J, Qian D, et al. Binary colloidal crystals drive spheroid formation and accelerate maturation of human-induced pluripotent stem cell-derived cardiomyocytes. *ACS Appl Mater Interfaces*. 2019;11(4):3679–89.
- Wang J, Chen A, Lieu DK, et al. Effect of engineered anisotropy on the susceptibility of human pluripotent stem cell-derived ventricular cardiomyocytes to arrhythmias. *Biomaterials*. 2013;34(35):8878–86.
- Chen A, Lieu DK, Freschauf L, et al. Shrink-film configurable multiscale wrinkles for functional alignment of human embryonic stem cells and their cardiac derivatives [J]. *Adv Mater*. 2011;23(48):5785–91.
- Cashman TJ, Josowitz R, Gelb BD, et al. Construction of defined human engineered cardiac tissues to study mechanisms of cardiac cell therapy. *J Vis Exp*. 2016;109:e53447.
- Kehat I, Kenyagin-Karsenti D, Snir M, et al. Human embryonic stem cells can differentiate into myocytes with structural and functional properties of cardiomyocytes. *J Clin Invest*. 2001;108(3):407–14.
- Chong JJ, Yang X, Don CW, et al. Human embryonic-stem-cell-derived cardiomyocytes regenerate non-human primate hearts. *Nature*. 2014; 510(7504):273–7.
- Tohyama S, Hattori F, Sano M, et al. Distinct metabolic flow enables large-scale purification of mouse and human pluripotent stem cell-derived cardiomyocytes. *Cell Stem Cell*. 2013;12(1):127–37.
- Burridge PW, Matsa E, Shukla P, et al. Chemically defined generation of human cardiomyocytes. *Nat Methods*. 2014;11(8):855–60.
- Caspi O, Huber I, Kehat I, et al. Transplantation of human embryonic stem cell-derived cardiomyocytes improves myocardial performance in infarcted rat hearts. *J Am Coll Cardiol*. 2007;50(19):1884–93.
- Liu YW, Chen B, Yang X, et al. Human embryonic stem cell-derived cardiomyocytes restore function in infarcted hearts of non-human primates. *Nat Biotechnol*. 2018;36(7):597–605.
- Hirschi KK, Li S, Roy K. Induced pluripotent stem cells for regenerative medicine. *Annu Rev Biomed Eng*. 2014;16(undefiend):277–94.
- Shiba Y, Gomibuchi T, Seto T, et al. Allogeneic transplantation of iPSC cell-derived cardiomyocytes regenerates primate hearts. *Nature*. 2016;538(7625): 388–91.
- Chow A, Stuckey DJ, Kidher E, et al. Human induced pluripotent stem cell-derived cardiomyocyte encapsulating bioactive hydrogels improve rat heart function post myocardial infarction. *Stem Cell Rep*. 2017;9(5):1415–22.
- Carpenter L, Carr C, Yang CT, et al. Efficient differentiation of human induced pluripotent stem cells generates cardiac cells that provide protection following myocardial infarction in the rat. *Stem Cells Dev*. 2012; 21(6):977–86.
- Zhao X, Chen H, Xiao D, et al. Comparison of non-human primate versus human induced pluripotent stem cell-derived cardiomyocytes for treatment of myocardial infarction. *Stem Cell Rep*. 2018;10(2):422–35.
- Jugdutt BI. Ventricular remodeling after infarction and the extracellular collagen matrix: when is enough enough? *Circulation*. 2003;108(11):1395–403.
- Pfeffer MA, Braunwald E. Ventricular remodeling after myocardial infarction. Experimental observations and clinical implications. *Circulation*. 1990;81(4): 1161–72.
- Cao F, Lin S, Xie X, et al. In vivo visualization of embryonic stem cell survival, proliferation, and migration after cardiac delivery. *Circulation*. 2006;113(7): 1005–14.

28. Tachibana A, Santoso MR, Mahmoudi M, et al. Paracrine effects of the pluripotent stem cell-derived cardiac myocytes salvage the injured myocardium. *Circ Res*. 2017;121(6):e22–36.
29. Stempien-Otero A, Helterline D, Plummer T, et al. Mechanisms of bone marrow-derived cell therapy in ischemic cardiomyopathy with left ventricular assist device bridge to transplant. *J Am Coll Cardiol*. 2015;65(14):1424–34.
30. Laflamme MA, Chen KY, Naumova AV, et al. Cardiomyocytes derived from human embryonic stem cells in pro-survival factors enhance function of infarcted rat hearts. *Nat Biotechnol*. 2007;25(9):1015–24.
31. Hou D, Youssef EA, Brinton TJ, et al. Radiolabeled cell distribution after intramyocardial, intracoronary, and interstitial retrograde coronary venous delivery: implications for current clinical trials. *Circulation*. 2005;112(9 Suppl):1150–6.

Ready to submit your research? Choose BMC and benefit from:

- fast, convenient online submission
- thorough peer review by experienced researchers in your field
- rapid publication on acceptance
- support for research data, including large and complex data types
- gold Open Access which fosters wider collaboration and increased citations
- maximum visibility for your research: over 100M website views per year

At BMC, research is always in progress.

Learn more biomedcentral.com/submissions

