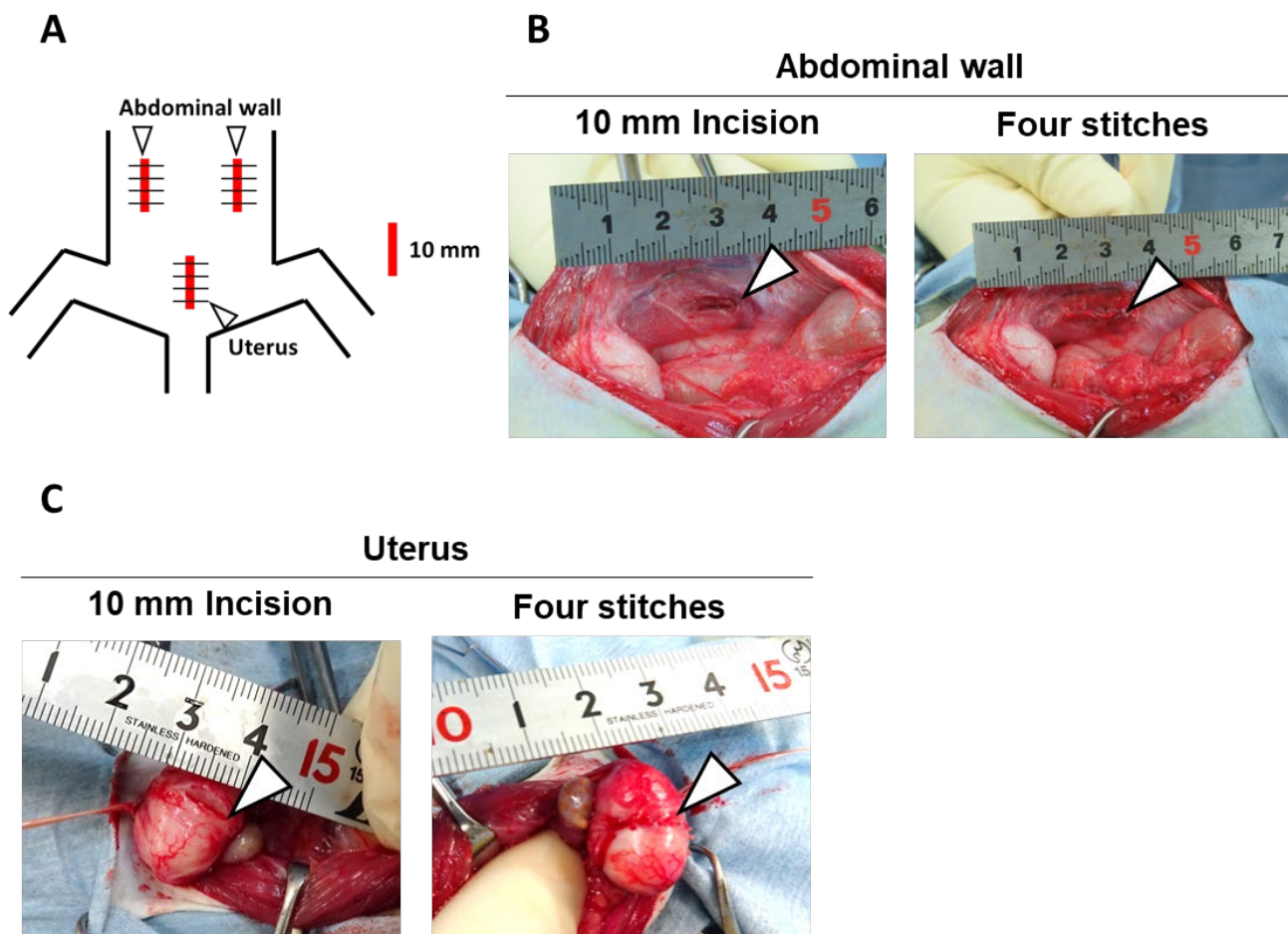
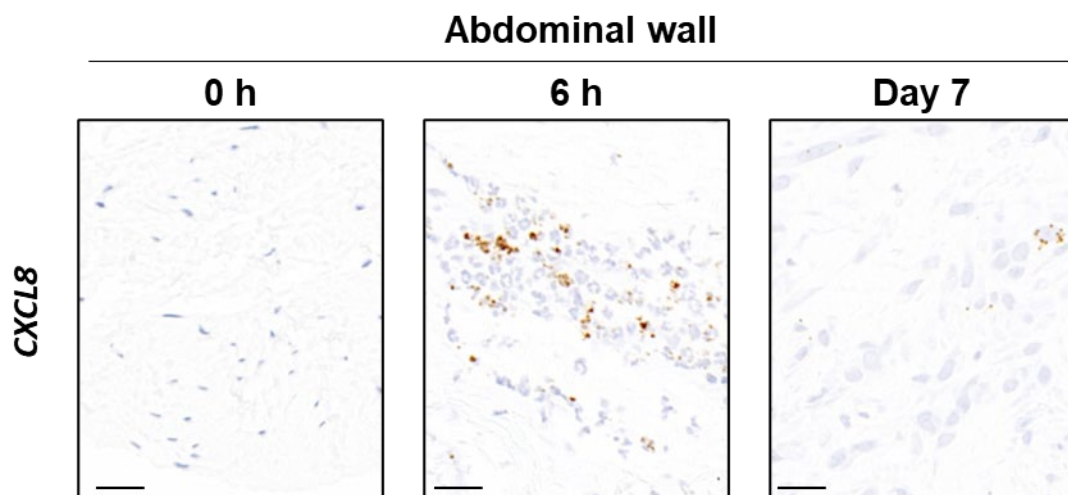


Supplementary information



Supplementary Figure S1

Methods for surgically inducing postoperative adhesions (PA) in cynomolgus monkeys. **(A)** PA were surgically induced at the right and left abdominal walls and uterus in female monkeys. **(B)** Procedures to induce PA in abdominal walls. After a midline incision, abdominal walls about 20 mm from midline were dissected for 10 mm (Left), abraded, and sutured four times (Right). Arrowheads show the injured site. **(C)** The same procedure was also performed at the uterus in the female monkeys. Arrowheads indicate the injured site.



Supplementary Figure S2

Evaluation of *CXCL8* positive cells in the monkeys following PA induction surgery. Representative images of in situ hybridization staining for *CXCL8*. Scale bars, 20 μ m.