

CORRECTION

# Correction: Modeling Reef Fish Biomass, Recovery Potential, and Management Priorities in the Western Indian Ocean

Timothy R. McClanahan, Joseph M. Maina, Nicholas A. J. Graham, Kendall R. Jones

Due to an image conversion error, Figs [3–6](#) erroneously show the letters “fl” in their upper right-hand corners, rather than a compass symbol. Please view the corrected Figs [3–6](#) here.

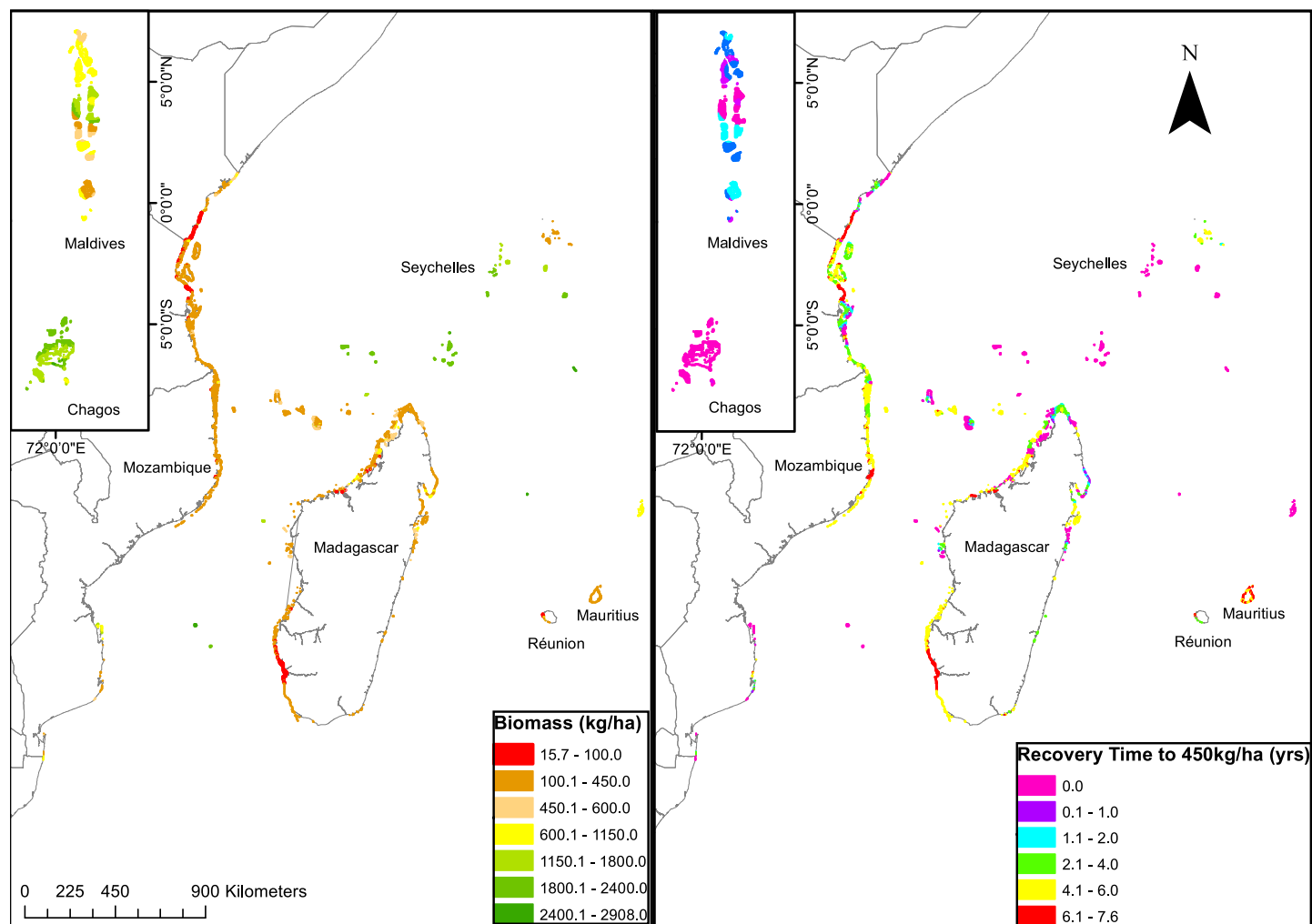


## OPEN ACCESS

**Citation:** McClanahan TR, Maina JM, Graham NAJ, Jones KR (2016) Correction: Modeling Reef Fish Biomass, Recovery Potential, and Management Priorities in the Western Indian Ocean. PLoS ONE 11 (6): e0156920. doi:10.1371/journal.pone.0156920

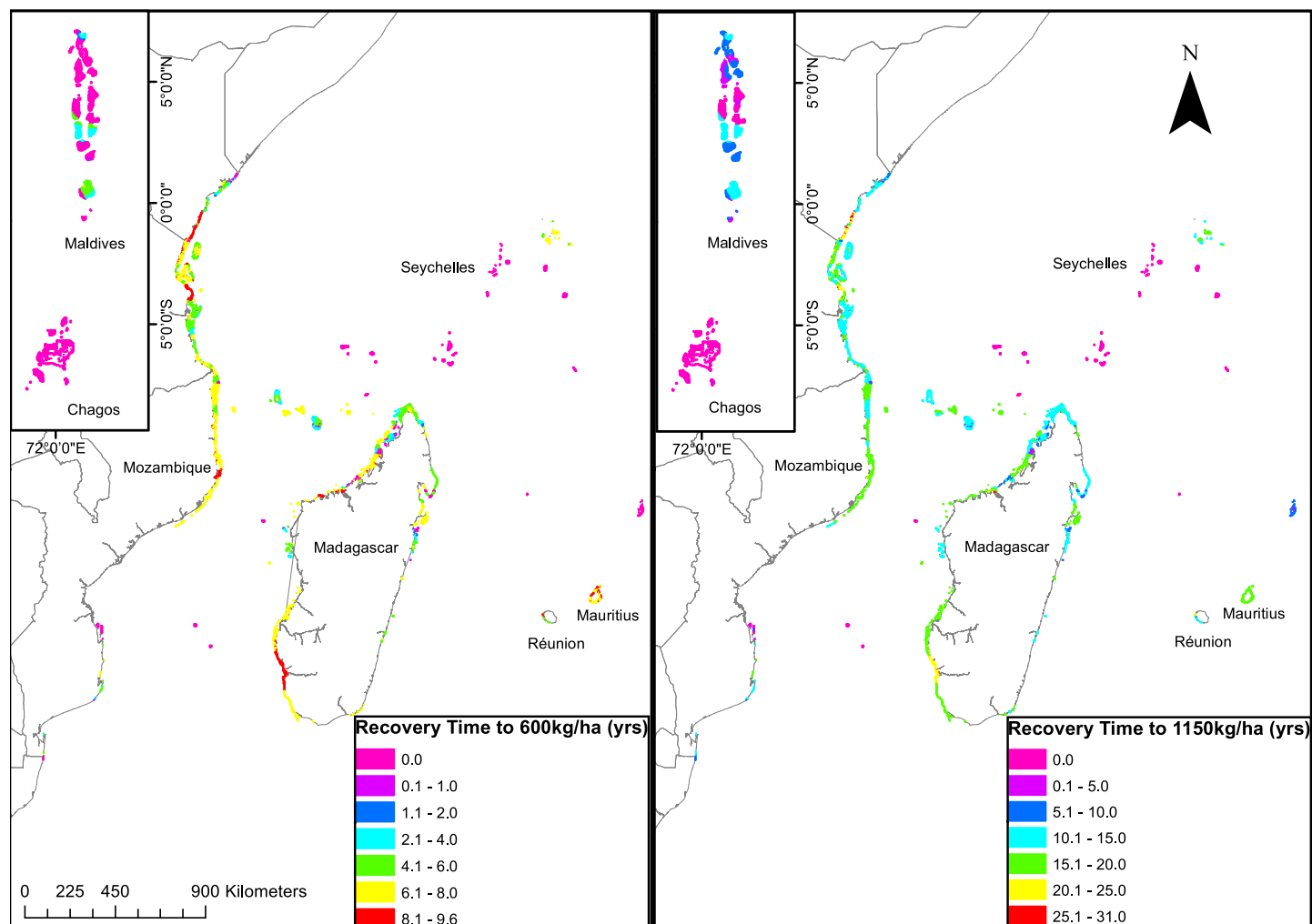
**Published:** June 1, 2016

**Copyright:** © 2016 McClanahan et al. This is an open access article distributed under the terms of the [Creative Commons Attribution License](#), which permits unrestricted use, distribution, and reproduction in any medium, provided the original author and source are credited.



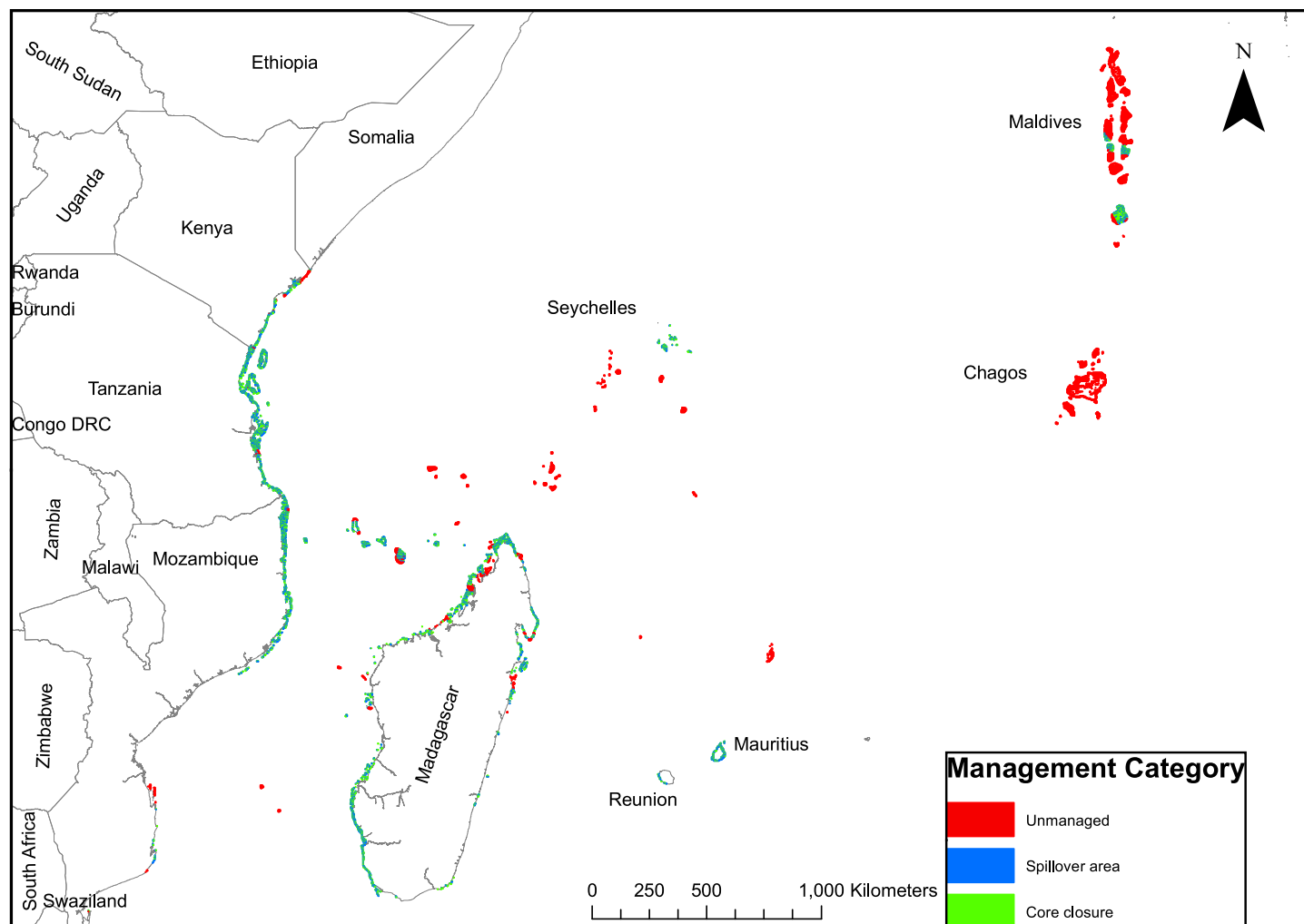
**Fig 3. Map of the western Indian Ocean for (a) modeled biomass based on the empirical relationship established in Fig 1, and (b) the estimated time to recover biomass to a mean estimated sustainability level (450 kg/ha).**

doi:10.1371/journal.pone.0156920.g001



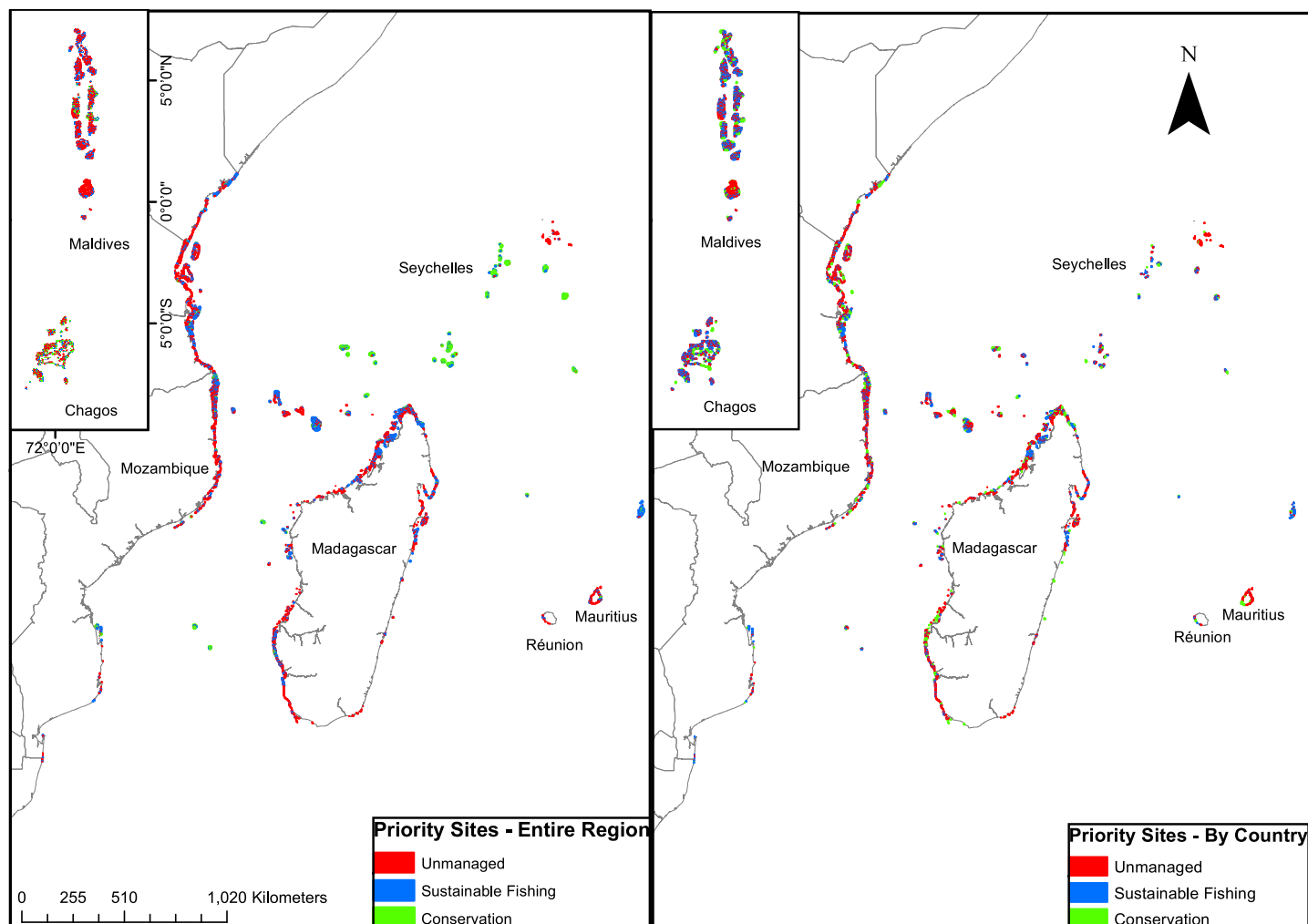
**Fig 4. Map of (a) the estimated time to recover biomass to a mean estimated sustainability level (600 kg/ha), and (b) the estimated conservation target of 1150 kg/ha in fully protected fisheries closures studied over a 20-year period (McClanahan et al. 2007).**

doi:10.1371/journal.pone.0156920.g002



**Fig 5. Map derived from algorithm identifying and prioritizing the most depleted fish biomass for small closures and adjacent spillover reefs until all reefs with biomass <450 kg/ha are classified.**

doi:10.1371/journal.pone.0156920.g003



**Fig 6. Western Indian Ocean maps of Marzone maximum probability priority selections for 50% sustainability, 20% conservation, and 30% unmanaged where to time to recovery was the cost and minimized if (a) countries collaborated to reach these goals, and (b) there was no collaboration between countries.**

doi:10.1371/journal.pone.0156920.g004

## Reference

1. McClanahan TR, Maina JM, Graham NAJ, Jones KR (2016) Modeling Reef Fish Biomass, Recovery Potential, and Management Priorities in the Western Indian Ocean. PLoS ONE 11(5): e0154585. doi: [10.1371/journal.pone.0154585](https://doi.org/10.1371/journal.pone.0154585) PMID: [27149673](https://pubmed.ncbi.nlm.nih.gov/27149673/)