

Clinicopathologic Significance of Gastric Adenocarcinoma with Neuroendocrine Features

Jang Jin Kim, June Young Kim, Hoon Hur¹, Yong Kwan Cho¹, and Sang-Uk Han¹

Department of Surgery, National Police Hospital, Seoul, ¹Ajou University School of Medicine, Suwon, Korea

Purpose: Composite neuroendocrine-exocrine carcinomas are malignancies that have two distinct components residing within the same tumor: an adenocarcinomatous portion and a neuroendocrine portion. This is rare in gastric cancers; however, poorly differentiated adenocarcinomas can sometimes reveal evidence of neuroendocrine features (NEF) or be 'mixed endocrine and exocrine carcinomas'. This study aimed to review NEF in gastric adenocarcinoma and to evaluate its prognostic significance.

Materials and Methods: We selected 29 patients who were diagnosed with gastric adenocarcinoma with NEF and received gastrectomies at the Department of Surgery, Ajou University Hospital between January 2001 and December 2009. We analyzed the clinicopathologic features of gastric cancer with NEF and the prognosis associated with such tumors.

Results: The pathologic result with respect to TNM staging of the gastric cancers with NEF were as follows: 5 cases of T1, 5 cases of T2, 10 cases of T3, and 9 cases of T4. There were 7 cases of N0, 7 cases of N1, 8 cases of N2 and 7 cases of N3. The staging of patients with NEF was higher than that of patients without NEF. Especially tumor lymphovascular invasion rate was 82.8%. The overall survival of patients with gastric cancer characterized by NEF was 73.8 months.

Conclusions: Positive NEF status might be correlated with clinicopathologic parameters such as a high stage and high frequency of regional lymph node metastasis.

Key Words: Stomach neoplasms; Adenocarcinoma; Neuroendocrine tumors

Introduction

Neuroendocrine tumors originating from diffuse neuroendocrine cells are only partially classified under the same scheme, while in part follows the classification of the tumors of the specific site of origin (i.e., in the respiratory and urogenital tract); such almost contradictory state of affairs concerns also the group of mixed neuroendocrine and non-neuroendocrine neoplasms.(1) Neuroendocrine tumors may give rise to pure endocrine tumors or

neoplasms that have aspects of both neuroendocrine differentiation and non-neuroendocrine features.(2)

Gastric epithelial tumors that are composed of exocrine cells and neuroendocrine cells can be divided into two broad groups: pure endocrine tumors, i.e., adenomas or adenocarcinomas with interspersed neuroendocrine cells, and typical endocrine tumors, i.e., mixed exocrine-neuroendocrine tumors in which neuroendocrine components represent at least one-third to half of the tumor tissue. (2-4) Both 'pure or typical' carcinomas are rare in gastric cancer. However, sometimes gastric adenocarcinomas show evidence of 'neuroendocrine features (NEF)' or act as 'mixed endocrine and exocrine carcinomas'.(1)

Histological differentiation of gastric cancer has long been accepted as one of the indicators of prognosis. More specifically, the degree of tumor cell differentiation correlates with neoplasm ag-

Correspondence to: Sang-Uk Han

Department of Surgery, Ajou University School of Medicine, San-5, Woncheon-dong, Yeongtong-gu, Suwon 422-749, Korea

Tel: +82-31-219-5195, Fax: +82-31-219-5756

E-mail: hansu@ajou.ac.kr

Received August 19, 2011

Revised October 26, 2011

Accepted October 27, 2011

© This is an open-access article distributed under the terms of the Creative Commons Attribution Non-Commercial License (<http://creativecommons.org/licenses/by-nc/3.0>) which permits unrestricted noncommercial use, distribution, and reproduction in any medium, provided the original work is properly cited.

gressiveness.(5–8) However, there have been few studies concerning the correlation between NEF and disease progression.

This study aimed to review NEF in gastric adenocarcinoma and to evaluate the prognostic significance of this diagnosis.

Materials and Methods

1. Patient population

We selected 29 patients who were diagnosed gastric adenocarcinoma with NEF and who received a gastrectomy at the Depart-

ment of Surgery, Ajou University Hospital between January 2001 and December 2009. We retrospectively collected data using medical records and telephone interviews. We analyzed patient's age, gender, tumor location, gross findings, tumor size, cancer stage, pathologic classification (i.e., Lauren classification, lymphatic or vascular invasion) and overall survival.

2. Diagnosis of neuroendocrine feature

All tumors were fixed with 10% formalin and embedded in paraffin immediately after resection. They were then stained with

Table 1. Clinicopathological characteristics of the gastric adenocarcinoma with neuroendocrine features (NEF)

No	Age	Sex	Location	Gross type	Size (cm)	T stage	N stage	Stage
1	69	F	Lower	B-III	10	T4b	N3a	IIIc
2	72	M	Lower	B-II	5	T3	N1	IIb
3	80	M	Lower	B-II	5.5	T4a	N0	IIb
4	65	M	Lower	EGC IIa	3	T1a	N0	Ia
5	59	M	Lower	B-III	6	T3	N1	IIb
6	57	M	Middle	B-II	3	T2	N2	IIb
7	54	F	Lower	B-III	4	T3	N2	IIIa
8	49	M	Lower	B-III	2.5	T4a	N3b	IIIc
9	77	M	Middle	B-II	12	T3	N2	IIIa
10	50	M	Lower	EGC IIb+IIc	3.5	T1a	N0	Ia
11	53	M	Lower	B-II	3.5	T2	N1	IIa
12	43	M	Lower	B-III	7.5	T4a	N3b	IIIc
13	48	F	Upper	B-II	5.3	T3	N1	IIb
14	30	F	Middle	B-III	4.5	T2	N3a	IIIa
15	59	M	Lower	B-I	4.5	T3	N2	IIIa
16	66	M	Lower	EGC IIb+IIc	2.5	T1b	N2	IIa
17	50	M	Upper	B-II	8.5	T4a	N1	IIIa
18	51	M	Lower	B-III	7	T4a	N3b	IIIc
19	64	M	Lower	B-III	5	T3	N2	IIIa
20	52	M	Lower	B-III	5	T3	N1	IIb
21	76	M	Middle	B-III	3.5	T4a	N3b	IIIc
22	62	M	Lower	B-III	2.8	T2	N2	IIb
23	31	M	Middle	B-II	5.5	T4a	N2	IIIb
24	63	F	Lower	EGC IIb+IIc	2.5	T1b	N0	Ia
25	69	F	Lower	B-III	7.5	T3	N0	IIa
26	50	M	Lower	B-III	4	T3	N0	IIa
27	40	M	Middle	B-IV	4.5	T4a	N0	IIb
28	69	M	Lower	EGC IIc	2	T1b	N1	Ib
29	74	M	Lower	B-III	2.5	T2	N3b	IIIa

Tumor (T) and node (N) were defined as described in the seventh edition of the American Joint Committee on Cancer classification of gastric carcinomas. M = male; F = female; B = Borrmann; EGC = early gastric cancer.

hematoxylin and eosin and evaluated with respect to the histological classification of the lesion. When the tumor consisted of both neuroendocrine and adenocarcinomatous components juxtaposed within the individual tumor and the neuroendocrine components occupied at least 30% of the tumor tissue, we diagnosed NEF in the adenocarcinoma. Following this, we performed additional immunohistochemistry of the NEF tumor. NEF stained a particular color when stained with chromogranin A or synaptophysin.

3. Follow-up and statistical analysis

Outcomes were determined by tumor location, tumor size, pathologic stage, local invasion and disease progression. The overall survival rates with respect to NEF were estimated using the Kaplan–Meier method.

Results

1. Clinicopathologic findings

There were 23 men and 6 women who were enrolled in the

study with NEF of the gastric adenocarcinoma. The mean age of the sample was 58 years old (range: 30 to 80 years old). The tumor size ranged from 2.0 to 12.0 cm in maximal diameter, with a median of 4.5 cm. Two of the tumors were situated in the upper third; six tumors were situated in the middle third; and twenty-one were situated in the lower third. According to the Borrmann gross type classification, there was 1 Borrmann type I case, 8 Borrmann type II cases, 14 Borrmann type III cases, 1 Borrmann type IV case and 5 early gastric cancer cases. The pathologic result of gastric cancer with NEF was classified using the tumor–nod–metastasis (TNM) staging system. There were 5 T1 cases, 5 T2 cases, 10 T3 cases, 8 T4a cases, and 1 T4b case. There were 7 N0 cases, 7 N1 cases, 8 N2 cases, 2 N3a cases and 5 N3b cases. Finally, there were 4 stage I cases (13.8%), 12 stage II cases (41.4%), and 13 stage III cases (44.8%) (Table 1).

2. Histological finding

On histological examination, lymphatic invasion was evident in 24 cases (82.8%), vascular invasion was evident in 17 cases (58.6%)

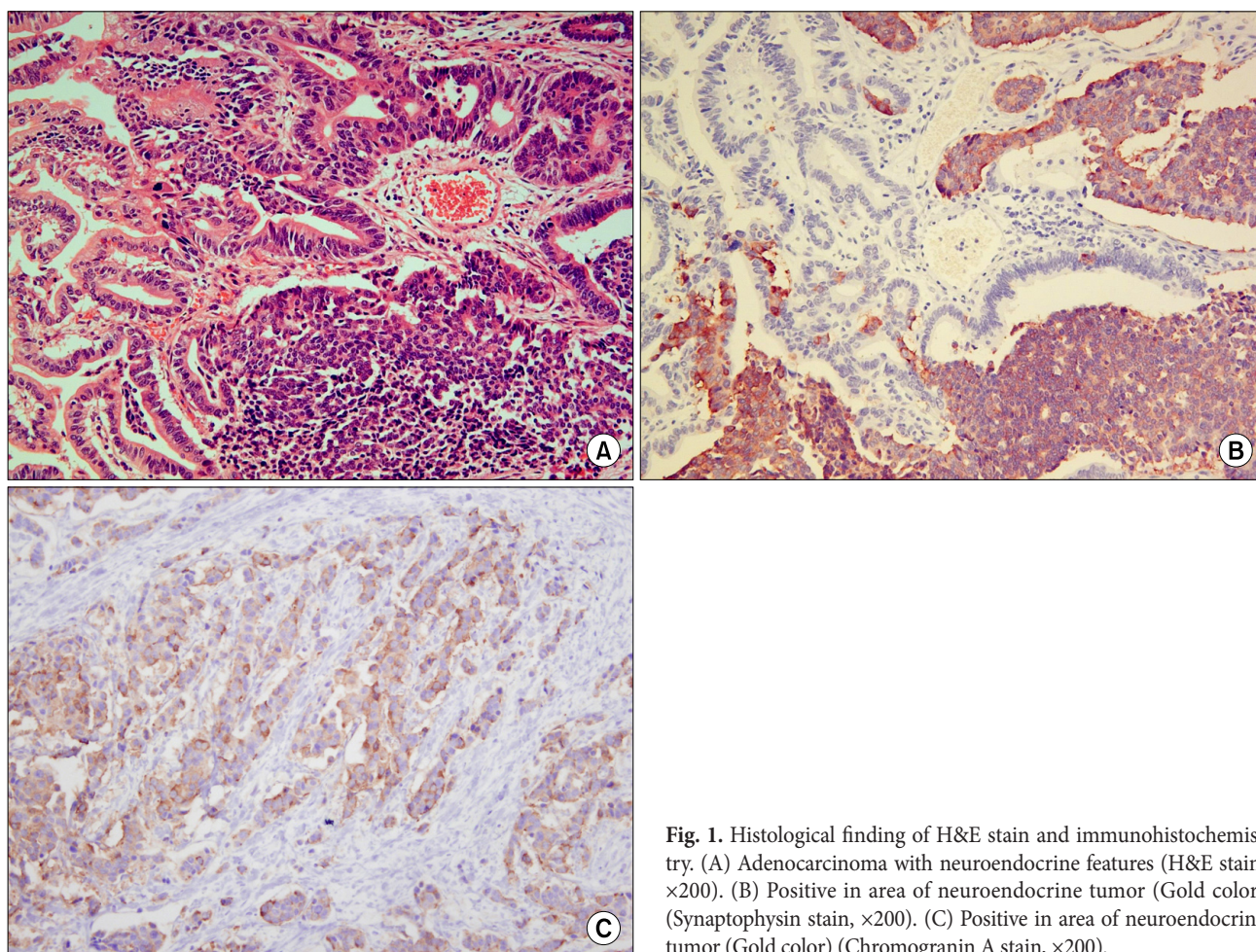


Fig. 1. Histological finding of H&E stain and immunohistochemistry. (A) Adenocarcinoma with neuroendocrine features (H&E stain, $\times 200$). (B) Positive in area of neuroendocrine tumor (Gold color) (Synaptophysin stain, $\times 200$). (C) Positive in area of neuroendocrine tumor (Gold color) (Chromogranin A stain, $\times 200$).

and neural invasion was evident in 11 cases (37.9%). By Lauren classification, there were 12 diffuse-type cases (41.4%), 13 intestinal-type cases (44.8%), 4 mixed-type cases (13.8%) (Table 2).

After we diagnosed NEF, sometimes we subsequently performed additional Chromogranin A and synaptophysin immunohistochemical staining. Chromogranin A was performed on 16 cases, and 10 tumors (62.5%) were positive for chromogranin A. Synaptophysin was performed on 17 cases, and 13 tumors (76.5%) were positive for synaptophysin (Fig. 1).

3. Treatment outcomes

All patients were treated using gastrectomy with lymph node dissection adopted by adenocarcinoma in gastric cancer. If the final pathologic stage of the tumor was greater than stage II, we performed adjuvant chemotherapy. No patients had post-operative mortality or critical complications. The median follow-up length was 22 months (range: 3 to 108 months), and the mean survival time was 73.8 months (Fig. 2).

Discussion

According to the '2009 Nationwide survey on surgically treated gastric cancer patients in South Korea', the proportion of nodal metastasis was 37.4%.⁽⁹⁾ However, we found that a higher proportion

of tumors with NEF showed lymph node metastasis (75.9%) and lymphatic invasion (82.8%). We compared these data with another study data of '*Helicobacter pylori* related gastric cancer' which received gastrectomy at our institute between January 2006 and December 2006. These result also showed NEF had more lymphatic or vascular invasion (Table 2). However these data had limitation, which was difference of the time period between two groups. Kim et al.⁽¹⁰⁾ suggest that there is a paracrine effect of tumor growth factor that is caused by neuroendocrine tumors. Eren et al.⁽¹¹⁾ also suggest that neuroendocrine cells may contribute to angiogenesis by expressing VEGF, especially in advanced stage cases. We noticed that there were more advanced stage tumors among the NEF group than the non-NEF group.⁽⁹⁾ This finding was also observed in the study by Ooi et al.⁽⁴⁾ for gastric carcinomas, Tamura et al.⁽¹²⁾ for endometrial adenocarcinomas and Allen et al.⁽¹³⁾ for prostatic adenocarcinomas. Similar to these studies, we think that this is likely due to the expression of multi potent stem cells, which are more common in advanced stage tumors.

In our study, their mean survival time was 73.8 months and seven (24%) of them had died of disease within 2 years. Generally, the survival time was strongly correlated with tumor stage, however we did not have sufficient NEF data for individual stages to compare survival time between NEF and non-NEF tumors.

We used two neuroendocrine markers, chromogranin A and synaptophysin. Chromogranin A is widely distributed in the secretory granules of most polypeptide-producing endocrine tissues and is considered to be very useful as a diagnostic aid for normal neuroendocrine and tumor cells.⁽¹⁴⁾ In our study, 62.5% of the NEF showed immunoreactivity for chromogranin A. Synaptophysin is an integral membrane glycoprotein that was originally isolated from bovine neuronal presynaptic vesicles and is considered to be a

Table 2. Histological characteristics of gastric adenocarcinomas with neuroendocrine features (NEF)

	NEF (n=29)	Non-NEF* (n=189)	P-value
Lauren			0.523
Diffuse	12 (41.4%)	84 (44.4%)	
Intestinal	13 (44.8%)	75 (39.7%)	
Mixed	4 (13.8%)	30 (15.9%)	
Lymphatic invasion			0.023
Present	24 (82.8%)	115 (60.8%)	
Not identified	5 (17.2%)	74 (39.2%)	
Vascular invasion			<0.001
Present	17 (58.6%)	21 (11.1%)	
Not identified	12 (41.4%)	168 (88.9%)	
Neural invasion			0.675
Present	11 (37.9%)	63 (33.3%)	
Not identified	18 (62.1%)	126 (66.7%)	

*189 cases of non-NEF adenocarcinoma which received gastrectomy at the Department of Surgery, Ajou University Hospital between January 2006 and December 2006.

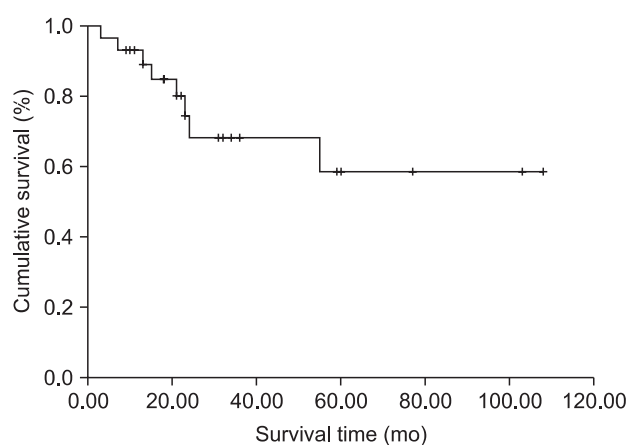


Fig. 2. Kaplan-Meier survival curves of gastric adenocarcinoma with neuroendocrine features.

significant neuroendocrine marker.(15) In our study, 76.5% of NEF were positive for synaptophysin. Therefore, both chromogranin A and synaptophysin have been shown to be valuable markers for detecting neuroendocrine cells. However, we did not perform this immunohistochemical stain for all tumor cells. Only 29 tumors had the exact diagnosis of NEF, although we performed more than two thousand gastrectomies. Eren et al.(11) found neuroendocrine differentiation in tumor cells among 45% of the conventional gastric adenocarcinomas. Waldum et al.(16) suggested a correlation between diffuse-type gastric carcinomas and those with neuroendocrine differentiation. Compare with our another data (*H. pylori* related gastric cancer), NEF and non-NEF showed similar Lauren classification (Table 2).

In conclusion, NEF was more frequent in advanced stage gastric adenocarcinomas and was more commonly associated with lymph node metastasis. If preoperative biopsy show the presence of NEF in gastric adenocarcinomas should thus raise concern for lymph node metastasis, and a lymph node dissection should be completed in such patients.

References

- Volante M, Righi L, Asioli S, Bussolati G, Papotti M. Goblet cell carcinoids and other mixed neuroendocrine/nonneuroendocrine neoplasms. *Virchows Arch* 2007;451 Suppl 1:S61-69.
- Rindi G, Arnold R, Bosman FT. Nomenclature and classification of neuroendocrine neoplasms of the digestive system. In: Bosman FT, Carneiro F, Hruban RH, Theise ND, et al., eds. *WHO classification of tumors of the digestive system*. Lyon: IARC, 2010.
- Lewin K. Carcinoid tumors and the mixed (composite) glandular-endocrine cell carcinomas. *Am J Surg Pathol* 1987;11 Suppl 1:71-86.
- Ooi A, Hayashi H, Katsuda S, Nakanishi I. Gastric carcinoma cells with endocrine differentiation show no evidence of proliferation. *Hum Pathol* 1992;23:736-741.
- Park JM, Jang YJ, Kim JH, Park SS, Park SH, Kim SJ, et al. Gastric cancer histology: clinicopathologic characteristics and prognostic value. *J Surg Oncol* 2008;98:520-525.
- Wanebo HJ, Kennedy BJ, Chmiel J, Steele G Jr, Winchester D, Osteen R. Cancer of the stomach. A patient care study by the American College of Surgeons. *Ann Surg* 1993;218:583-592.
- Sim YK, Kim CY, Jeong YJ, Kim JH, Hwang Y, Yang DH. Changes of the clinicopathological characteristics and survival rates of gastric cancer with gastrectomy: 1990s vs early 2000s. *J Korean Gastric Cancer Assoc* 2009;9:200-206.
- Seo WH, Seo BJ, Yu HJ, Lee WY, Lee HK. Analysis of prognostic factors in 1,435 surgically treated patients with gastric cancer. *J Korean Gastric Cancer Assoc* 2009;9:143-151.
- Jeong O, Park YK. Clinicopathological features and surgical treatment of gastric cancer in South Korea: the results of 2009 nationwide survey on surgically treated gastric cancer patients. *J Gastric Cancer* 2011;11:69-77.
- Kim KM, Kim MJ, Cho BK, Choi SW, Rhyu MG. Genetic evidence for the multi-step progression of mixed glandular-neuroendocrine gastric carcinomas. *Virchows Arch* 2002;440:85-93.
- Eren F, Celikel C, Güllüoğlu B. Neuroendocrine differentiation in gastric adenocarcinomas; correlation with tumor stage and expression of VEGF and p53. *Pathol Oncol Res* 2004;10:47-51.
- Tamura T, Jobo T, Watanabe J, Kanai T, Kuramoto H. Neuroendocrine features in poorly differentiated endometrioid adenocarcinomas of the endometrium. *Int J Gynecol Cancer* 2006;16:821-826.
- Allen FJ, Van Velden DJ, Heyns CF. Are neuroendocrine cells of practical value as an independent prognostic parameter in prostate cancer? *Br J Urol* 1995;75:751-754.
- Wilson BS, Lloyd RV. Detection of chromogranin in neuroendocrine cells with a monoclonal antibody. *Am J Pathol* 1984;115:458-468.
- Gould VE, Wiedenmann B, Lee I, Schwechheimer K, Dockhorn-Dworniczak B, Radosevich JA, et al. Synaptophysin expression in neuroendocrine neoplasms as determined by immunocytochemistry. *Am J Pathol* 1987;126:243-257.
- Waldum HL, Aase S, Kvetnoi I, Brenna E, Sandvik AK, Syversen U, et al. Neuroendocrine differentiation in human gastric carcinoma. *Cancer* 1998;83:435-444.