



Cite this: *RSC Adv.*, 2018, 8, 26764

# Gadolinium-labelled iron/iron oxide core/shell nanoparticles as $T_1$ - $T_2$ contrast agent for magnetic resonance imaging†

Kaili Wang, Lu An, Qiwei Tian,\* Jiaomin Lin and Shiping Yang \*

Magnetic resonance imaging (MRI) is indispensable and powerful in modern clinical diagnosis and has some advantages such as non-invasiveness and high penetration depth. Furthermore, dual  $T_1$ - $T_2$  MR imaging has attracted crucial interest as it can decrease the risk of pseudo-positive signals in diagnosing lesions. And it's worth nothing that the dual-mode MR imaging displays a vital platform to provide relatively comprehensive diagnosis information and receive accurate results. Herein, we report a dual  $T_1$ - $T_2$  MR imaging contrast agent (CA) grounded on the iron/iron oxide core/shell nanomaterials conjugated with gadolinium chelate. The Gd-labeled Fe@Fe<sub>3</sub>O<sub>4</sub> NPs reveal the feasibility to utilize them to serve as a dual  $T_1$ - $T_2$  MR imaging CA, and the relaxivity results in a 0.5 T MR system showed a longitudinal relaxivity value ( $r_1$ ) and transverse relaxivity value ( $r_2$ ) of 7.2 mM<sup>-1</sup> s<sup>-1</sup> and 109.4 mM<sup>-1</sup> s<sup>-1</sup>, respectively. The MTT results demonstrate the Gd-labeled Fe@Fe<sub>3</sub>O<sub>4</sub> NPs have no obvious cytotoxicity and a good compatibility. The *in vitro* and *in vivo* MRI generated a brighter effect and darkening in  $T_1$ -weighted MR imaging and  $T_2$ -weighted images, respectively. The results clearly indicate that Gd-labeled Fe@Fe<sub>3</sub>O<sub>4</sub> NPs have potential as a magnetic resonance imaging contrast reagent.

Received 28th May 2018

Accepted 17th July 2018

DOI: 10.1039/c8ra04530e

rsc.li/rsc-advances

## 1. Introduction

Cancer has become a predominant cause of death across the world and seriously threatens human health.<sup>1,2</sup> Hence, exact diagnosis of cancer becomes extremely important. During the past few decades, the representative imaging modalities in either preclinical research or clinical settings are magnetic resonance imaging (MRI), computed tomography (CT), positron emission tomography (PET), optical fluorescence imaging (FI), single-photon emission computed tomography (SPECT), ultrasound (US), and photoacoustic imaging (PA).<sup>3-5</sup> Even so, when we need precise small animal imaging, such a single imaging mode is defective and more challenges arise in complex environments.<sup>6</sup> To settle this problem and achieve accurate molecular imaging, a multi-mode imaging technique is one of the promising ways.<sup>7</sup> Therefore, multifunctional CAs are usually indispensable as the complementary information of different imaging modes can be obtained at one time.<sup>8</sup>

As one of the most excellent modern clinical imaging techniques, MRI has become an extremely important part due

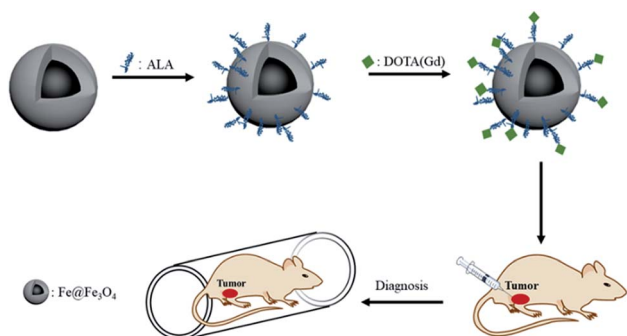
to its noninvasive character, high soft tissue contrast, large penetration depth and outstanding spatial resolution.<sup>9-11</sup> Therefore, MRI integrated multi-mode imaging techniques including MR-PET/SPECT, MR-Optical, MR-Ultrasound and MR-Photoacoustic were investigated widely.<sup>12-16</sup> However, it is worth noting that these multi-mode imaging techniques must be performed on different imaging devices, which cost much more. Recently, multi-mode imaging carried out on one device, such as the  $T_1$ - $T_2$  dual-weighted MRI, has attracted more attention.<sup>17-20</sup> Furthermore, the difficulties of image matching in the multiple imaging instruments could be eliminated when a single imaging system was selected, in other words, the accuracy of tumor detection was improved.<sup>21,22</sup> Thus, it is necessary to design and synthesis of the dual  $T_1$ - $T_2$  MRI CAs for realizing dual-modal imaging on a single instrument.<sup>6,11,23</sup> To date, a great deal of work in effects have already been carried out to prepare  $T_1$ - $T_2$  dual-weighted CAs for MRI *via* the combination of iron materials with Gd elements. For example, Liang *et al.* prepared the core/shell Fe<sub>3</sub>O<sub>4</sub>/Gd<sub>2</sub>O<sub>3</sub> nanocubes and put it into use for heightened contrast effect.<sup>24</sup> Zhang *et al.* applied Fe<sub>3</sub>O<sub>4</sub> as a core, SiO<sub>2</sub> as a separating layer, Gd<sub>2</sub>O(CO<sub>3</sub>)<sub>2</sub> as the outer shell to synthesis core/shell/shell nanoparticles and explored the potential of images.<sup>25,26</sup> Chen *et al.* used hydrophobic interaction between gadolinium with iron oxide to gain a new nanocrystal (GdIO). This novel GdIO nanocluster showed an important MRI monitoring capability.<sup>27</sup>

The Key Laboratory of Resource Chemistry of the Ministry of Education, The Shanghai Key Laboratory of Rare Earth Functional Materials, The Shanghai Municipal Education Committee Key Laboratory of Molecular Imaging Probes and Sensors, Shanghai Normal University, Shanghai 200234, China. E-mail: qiweitian@shnu.edu.cn; shipingy@shnu.edu.cn

† Electronic supplementary information (ESI) available. See DOI: 10.1039/c8ra04530e



Besides, Long *et al.* also reported an underlying  $T_1$ - $T_2$  MRI probe of gadolinium-labelled  $\text{Fe}_3\text{O}_4$  nanoparticles but did not further used especially *in vivo*.<sup>28</sup> Inspired by this, in order to get even more in-depth imaging information and expand the application of the probe, we conjugated the Gd chelates onto  $\text{Fe@Fe}_3\text{O}_4$  nanoparticles to create a platform for dual modal detection. Because iron has a good biocompatibility, so  $\text{Fe@Fe}_3\text{O}_4$  core/shell NPs have been widely treated on  $T_2$ -weight MRI CAs. Our group have developed several  $T_2$ -weight MRI guided therapy agents based on the excellent  $T_2$ -weight MRI properties of the  $\text{Fe@Fe}_3\text{O}_4$  core/shell NPs. Gadolinium(III) containing MRI CAs are the commercial and most commonly used  $T_1$ -MRI agents. The most used injection reagent of the Gd based  $T_1$ -MRI agents is a chelated compound due to the toxic of the free solubilized aqueous Gd ion.<sup>29</sup> Thus, it offers an opportunity for the Gd chelated compound to undergo ligand exchange with  $\text{Fe@Fe}_3\text{O}_4$  core/shell NPs, forming a dual  $T_1$ - $T_2$  MRI CA. Hence, to expand the application of CAs in MRI and increase the sensitivity detection of lesion sites, we fabricate a dual-functional Gd-labeled  $\text{Fe@Fe}_3\text{O}_4$  NPs for dual  $T_1$ - $T_2$  MR images. The formation process of NPs consisted of three procedures (Scheme 1). Firstly, the  $\text{Fe@Fe}_3\text{O}_4$ , capping with oleic and oleylamine, was formed through the thermal decomposition approach. In this procedure,  $\text{Fe}(\text{CO})_5$  was utilized as a precursor. Secondly, alendronate-coated  $\text{Fe@Fe}_3\text{O}_4$  was prepared *via* the ligand exchange based on the strong coordination ability of the Fe and phosphonic acid groups by mixing the obtained  $\text{Fe@Fe}_3\text{O}_4$  NPs and alendronate solution. Then, the acquired alendronate-coated  $\text{Fe@Fe}_3\text{O}_4$  NPs were combined with 1,4,7,10-tetraazacyclododecane-1,4,7,10-tetraacetic acid (DOTA), one of the typical Gd chelating agents, by activating with 3-(3-dimethylaminopropyl)-1-ethylcarbodiimide hydrochloride/*N*-hydroxysuccinimide (EDC/NHS) method. After purification by removing the unreacted reagent,  $\text{Gd}^{3+}$  was added to get DOTA(Gd)- $\text{Fe@Fe}_3\text{O}_4$  NPs by chelating with DOTA. The formed multifunctional DOTA(Gd)- $\text{Fe@Fe}_3\text{O}_4$  NPs were characterized by transmission electron microscopy (TEM), X-ray diffraction (XRD), Fourier transform infrared spectroscopy (FTIR), relaxivity measurements and MRI. At the same time, their effect of tumor diagnosis on 4T1 cells *in vitro* and *in vivo* were further evaluated. Our results indicated that DOTA(Gd)- $\text{Fe@Fe}_3\text{O}_4$  NPs played an important role in tumor diagnosis.



Scheme 1 Schematic of the MRI of the DOTA(Gd)- $\text{Fe@Fe}_3\text{O}_4$  NPs.

## 2. Experimental section

### 2.1. Apparatus and reagents

Oleic acid, 1-octadecene, oleylamine, 3-(3-dimethylaminopropyl)-1-ethylcarbodiimide hydrochloride (EDC) and *N*-hydroxysuccinimide (NHS) were supplied from Sigma-Aldrich.  $\text{GdCl}_3 \cdot 6\text{H}_2\text{O}$ , alendronate sodium (ALA) and DOTA were provided from Adamas-beta.  $\text{Fe}(\text{CO})_5$  was supplied from Development of Beijing Chemical Technology Co., Ltd. Branch. All the chemicals were used without further purify.

XRD of the  $\text{Fe@Fe}_3\text{O}_4$  was obtained on a Rigaku DMAX 2000 diffractometer (Cu/ $K\alpha$  radiation, 40 kV, 40 mA, scan range 20–80°). TEM images were measured on a JEOL JEM-2010 microscope with the accelerating voltage in 200 kV. The dynamic light scattering (DLS) and surface potential were collected utilizing a Malvern Zetasizer Nano ZS model ZEN3600 (Worcestershire, U.K.). FTIR spectra were captured by a Nicolet Avatar 370 FTIR spectrometer. The concentration of the metal in the samples was collected by inductively coupled plasma atomic emission spectroscopy (ICP-AES). The hysteresis loops were performed in a superconducting quantum interference device (SQUID) from Lake Shore.

### 2.2. Synthesis of ALA coated $\text{Fe@Fe}_3\text{O}_4$ NPs

Firstly, as previously reported, 12 nm  $\text{Fe@Fe}_3\text{O}_4$  samples were prepared.<sup>30</sup> Then, the ALA coated  $\text{Fe@Fe}_3\text{O}_4$  was prepared by a ligand exchange method. The details as follow: 100 mg ALA were dispersed in 15 mL mixture of water and DMF ( $v/v = 2 : 1$ ) in single-necked flask. Then, 8 mL oleic acid-coated NPs in DMF ( $3 \text{ mg mL}^{-1}$ ) and 0.4 mL KOH (1 M) was added to the above mixture. After shaking for 12 hours at room temperature, the ALA coated  $\text{Fe@Fe}_3\text{O}_4$  NPs was captured by centrifugation and washed with acetone *via* several times. At last, nanoparticles were dissolved in 10 mL water for next utilize.

### 2.3. Preparation of DOTA- $\text{Fe@Fe}_3\text{O}_4$ NPs

In details, 10 mL of double distilled water containing NHS (4.268 mg) and EDC (4.740 mg) was mixed with DOTA (10 mg, 5 mL) underneath magnetic stirring. After 2 h, the DOTA which activated was appended into ALA coated  $\text{Fe@Fe}_3\text{O}_4$  NPs water dispersion, and this mixture was reacted for overnight. After collecting by centrifugation and washed with acetone, the acquired product was dispersed in sodium acetate buffer (0.2 M, pH = 6.5) for subsequent use.

### 2.4. Preparation of DOTA(Gd)- $\text{Fe@Fe}_3\text{O}_4$ NPs

In a typical process, a  $\text{GdCl}_3 \cdot 6\text{H}_2\text{O}$  aqueous solution (10 mg, 5 mL) was appended to the prepared DOTA- $\text{Fe@Fe}_3\text{O}_4$  sodium acetate buffer solution dispersion. After stirring for 10 h, DOTA(Gd)- $\text{Fe@Fe}_3\text{O}_4$  NPs were obtained by centrifugal separation and washed with acetone *via* several times. At last, the obtained DOTA(Gd)- $\text{Fe@Fe}_3\text{O}_4$  NPs were dispersed in distilled water and preserved in 4 °C before utilization.

## 2.5. Cytotoxicity assay

Methyl thiazolyl tetrazolium (MTT) measurement was utilized to assess the cytotoxicity of the DOTA(Gd)-Fe@Fe<sub>3</sub>O<sub>4</sub> NPs by means of 4T1 cell line. 4T1 cells were seeded into 96-well culture plates ( $5 \times 10^4$  cells per well) in DMEM assisted by 1% penicillin-streptomycin and 10% fetal bovine serum at 37 °C under 5% CO<sub>2</sub>. After being cultured for 12 h, the DOTA(Gd)-Fe@Fe<sub>3</sub>O<sub>4</sub> NPs with different concentrations (0, 10, 20, 50, 100, 200  $\mu\text{g mL}^{-1}$  dispersed in DMEM) were added to culture the cells for a further 12 or 24 h, respectively. Thereafter, the cells were incubated for another 4 h when a certain amount of MTT solution (20  $\mu\text{L}$  5 mg  $\text{mL}^{-1}$ ) was appended to each well under a similar condition. After that, with the adding of DMSO (150  $\mu\text{L}$  per well), the blue formazan crystals were captured after shaking (150 rpm, 5 min). At last, the absorption was acquired by microplate reader.

## 2.6. Relaxivity measurements in solution

The relaxation characteristics of both DOTA(Gd)-Fe@Fe<sub>3</sub>O<sub>4</sub> NPs and ALA coated Fe@Fe<sub>3</sub>O<sub>4</sub> NPs at various iron concentrations were tested to evaluate the dual-model MR performance. All nanoparticles were dispersed in distilled water and carried out on the 0.5T NMI20 Analyst (Shanghai Niumag Electronic Technology Co., Ltd.). As to  $T_1$ -weighted relaxation time, it was collected by a spin-echo sequence, and parameters were as follows: TW = 10 000 ms, NS = 2, P1 = 10.48  $\mu\text{s}$ , SW = 100 KHz, RFD = 0.020 ms, RG1 = 20.0 db, DRG1 = 3, TD = 1024. For  $T_2$ -weighted relaxation time, TW/TE = 12 000/1.5 ms, SF = 18 MHz, P2 = 20.00  $\mu\text{s}$ , NECH = 15 000. The other parameters are similar to  $T_1$ -weighted MRI. The acquired fitted curves for  $1/T$  ( $\text{s}^{-1}$ ) against the Fe concentration (mM) were analyzed to calculate the relaxivity values of  $r$ .

## 2.7. MRI in cells

The *in vitro* dual-model MRI performance of the prepared DOTA(Gd)-Fe@Fe<sub>3</sub>O<sub>4</sub> NPs was tested by incubating the DOTA(Gd)-Fe@Fe<sub>3</sub>O<sub>4</sub> NPs with 4T1 cells on 0.5T NMI20 Analyst. In details, 4T1 cells were seeded in a 6-well plate at a cell density of  $1 \times 10^6$  cells per mL for 12 h. Then, the cells were incubated with DOTA(Gd)-Fe@Fe<sub>3</sub>O<sub>4</sub> NPs for 4 h. After that, the cells were resuspended in xanthan gum ( $1 \times 10^6$  cells per well) after washed with PBS buffer solution for several times. Given the above, the preparation of MRI in cells was completed. For  $T_1$ -weighted MRI, parameters were determined as follows: D0 = 500 ms, D4 = D5 = 50 ms, RFA1 = 5.5%, RFA2 = 9.5%, RP1Count = 2, RP2Count = 128. For  $T_2$ -weighted MRI, D0 = 5500 ms, D4 = D5 = 200 ms. The others of parameters were the same.

## 2.8. MRI *in vivo*

The *in vivo* dual-model MRI was performed by a 0.5 T system (MiniMR-60; Shanghai Niumag Electronic Technology Co., Ltd.). The prepared DOTA(Gd)-Fe@Fe<sub>3</sub>O<sub>4</sub> NPs was intertumoral injected in 4T1 tumor mouse. Noted, animal experiments were approved by the animal ethics committee of

Shanghai Normal University and in strict accordance with the policy of the Institutional Animal Care and Use Committee. Firstly, the 4T1 tumor bearing mice model was prepared by inoculating subcutaneously with 4T1 cells ( $3 \times 10^7$  cells per mL) for female BALB/c mice (6 weeks). After diameter of tumor reached  $\sim 1.2$  cm, the DOTA(Gd)-Fe@Fe<sub>3</sub>O<sub>4</sub> NPs (50  $\mu\text{L}$ , 2 mg  $\text{mL}^{-1}$ ) was injected into BALB/c mice *via* intertumoral injection. As to MRI *in vivo*, experiments were performed on the 0.5 T MRI system after injected for 30 min. For  $T_1$ -weighted MRI, a conventional spin-echo sequence was utilized, the parameters were as follows: TR/TE = 300/12 ms,  $192 \times 256$  matrices,  $80 \times 80$  mm field of view, P1 = 5.3, NS = 10, a slice thickness of 4 mm. For  $T_2$ -weighted MR imaging, TR/TE = 1000/18.125 ms,  $256 \times 256$  matrices,  $130 \times 130$  mm field of view, a slice thickness of 4 mm. All the tests were parallelly carried out for three times. Mouse selection and methods of care, welfare, and killing were authorized by the animal ethics committee of Shanghai Normal University, and were in strict accordance with the policy of the Institutional Animal Care and Use Committee.

# 3. Results and discussion

## 3.1. Characterization of the prepared NPs

According to the previous reports,<sup>30</sup> 12 nm Fe@Fe<sub>3</sub>O<sub>4</sub> nanoparticles were prepared firstly. To verify the crystal structure of the fabricated samples, XRD studies were performed on the obtained dry powder. The two diffraction peaks at 44.6 and 65.2 degree ( $2\theta$ ) of the obtained sample are a good match with the (110) and (200) of the body-centered cubic iron (JCPDS card no. 65-4899), respectively (Fig. 1). On the contrary, it is difficult to find the diffraction peak to index to the crystal Fe<sub>3</sub>O<sub>4</sub> (JCPDS card no. 1-111) due to the extremely poor crystallization of Fe<sub>3</sub>O<sub>4</sub> in the sample by the natural oxidation method used in the experiment. These results suggest the existence of the body-centered cubic iron, not the crystal Fe<sub>3</sub>O<sub>4</sub>.<sup>31</sup> In order to demonstrate that the body-centered cubic iron was coated with amorphous Fe<sub>3</sub>O<sub>4</sub>, the TEM was used to further characterize the structure of the prepared sample. The TEM image demonstrate that the obtained sample showed obvious core-shell structures with the shell thickness of  $\sim 2$  nm and a high uniformity particle size distribution with a diameter of 12 nm. The similar results with previous literature suggest that the Fe@Fe<sub>3</sub>O<sub>4</sub> NPs with a core shell structure were prepared successfully.

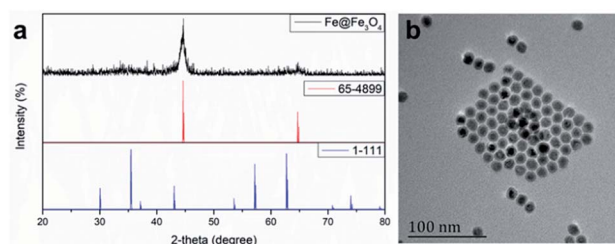


Fig. 1 (a) X-ray diffraction pattern and (b) TEM image of Fe@Fe<sub>3</sub>O<sub>4</sub> nanoparticles.

Then, the gadolinium chelate was conjugated to the  $\text{Fe}@Fe_3O_4$  NPs. In order to obtain the amino group to conjugate the DOTA, the ALA was used to modify the  $\text{Fe}@Fe_3O_4$  NPs *via* a ligand exchange method at beginning. The results were firstly characterized by the TEM. As shown in Fig. 2, both ALA coated  $\text{Fe}@Fe_3O_4$  NPs and DOTA(Gd)- $\text{Fe}@Fe_3O_4$  NPs are exhibit clearly core-shell structures and a high uniformity particle size distribution with a little bit increased diameter ( $\sim 13$  and  $\sim 14$  nm respectively) after modification, indicating that the modification will not affect structure and size of the  $\text{Fe}@Fe_3O_4$  NPs. Besides, their DLS results of nanoparticles are shown in Fig. 2c, and it showed that their hydrodynamic diameter were about 49 nm, 92 nm and 258 nm (ESI, Fig. S1†). As a kind of substance with large molecular weight, Gd-DOTA has a strong ability to combine with water, resulting a large size distribution for DOTA(Gd)- $\text{Fe}@Fe_3O_4$  NPs. Importantly, the zeta potential of the ALA coated  $\text{Fe}@Fe_3O_4$  is  $-22.8$  mV. Notably, the surface potential from measurement of DOTA- $\text{Fe}@Fe_3O_4$  and DOTA(Gd)- $\text{Fe}@Fe_3O_4$  is  $-37.4$  mV and  $24.6$  mV respectively (Fig. 2d, ESI,† Fig. S2†). The great change of the surface potential caused by the follow reasons. For the ALA coated  $\text{Fe}@Fe_3O_4$ , the observed potential is negative, which is due to the residual phosphate group in the solution is much than the amino group. After grafting with DOTA, the more negative potential can be attributed to the lot of carboxyl groups of DOTA. Once the DOTA(Gd)- $\text{Fe}@Fe_3O_4$  formed, the surface potential changed from negative to positive. The result of which advocate the fact that Gd(III) ions is coordination with the carboxylate groups of DOTA ligand. The great change of the surface potential also can demonstrate that the DOTA(Gd)- $\text{Fe}@Fe_3O_4$  was prepared successfully. In order to confirm the elements content of compound, the obtained nanoparticles were determined by ICP assay. According to the results of three parallel tests, the ratio of Fe to Gd is  $\sim 3 : 1$ .

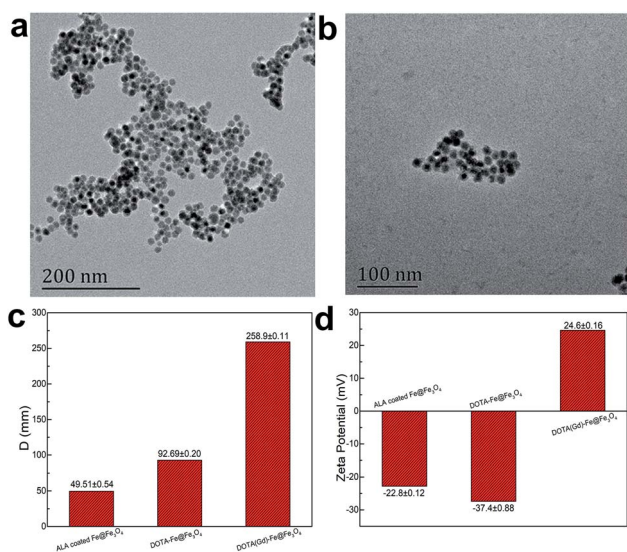


Fig. 2 TEM micrograph of (a) ALA coated  $\text{Fe}@Fe_3O_4$  NPs and (b) DOTA(Gd)- $\text{Fe}@Fe_3O_4$  NPs, the comparison images of (c) DLS and (d) zeta potential.

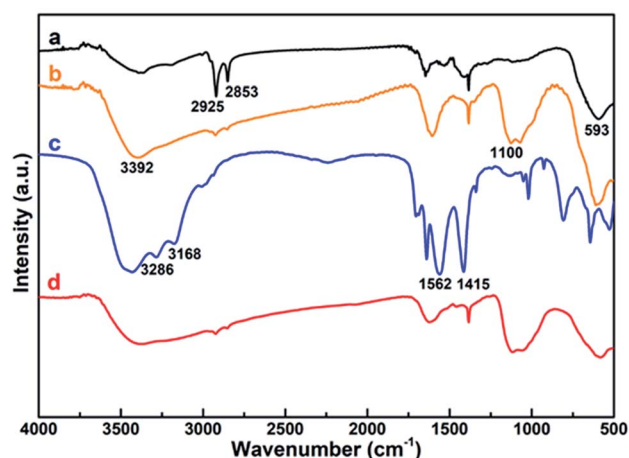


Fig. 3 FTIR spectroscopy of (a)  $\text{Fe}@Fe_3O_4$ , (b) ALA coated  $\text{Fe}@Fe_3O_4$ , (c) DOTA- $\text{Fe}@Fe_3O_4$  and (d) DOTA(Gd)- $\text{Fe}@Fe_3O_4$  NPs.

FTIR was utilized to further characterize the surface ligand of all the obtained NPs, including  $\text{Fe}@Fe_3O_4$ , ALA coated  $\text{Fe}@Fe_3O_4$ , DOTA- $\text{Fe}@Fe_3O_4$  and DOTA(Gd)- $\text{Fe}@Fe_3O_4$  (Fig. 3). Several characteristic peaks (Fig. 3, origin line a) were observed for  $\text{Fe}@Fe_3O_4$ :  $593$   $\text{cm}^{-1}$  (Fe–O stretch),  $2925$   $\text{cm}^{-1}$  and  $2853$   $\text{cm}^{-1}$  ( $-\text{CH}_2$  vibrations) similar with previous ref. 32 and 33. After coated by the ALA, the spectra showed a significantly band of phosphonate resonance in  $1100$   $\text{cm}^{-1}$  (Fig. 3, origin line b), suggesting the success of ligand exchange. After the attachment of DOTA ligands, two disubstituted amides peaks ( $3286$   $\text{cm}^{-1}$ ,  $3168$   $\text{cm}^{-1}$ ), a monosubstituted amides peak ( $1562$   $\text{cm}^{-1}$ ) and a strong ester group stretch vibrations ( $1415$   $\text{cm}^{-1}$ ) were observed (Fig. 3, origin line c). When it comes to the DOTA(Gd)- $\text{Fe}@Fe_3O_4$  NPs, the vibration absorption peak of the carboxyl group abruptly widens, which should be attributed to the coordination of  $\text{Gd}^{3+}$  and water.<sup>34</sup> All of the above results demonstrated that the three-step reaction is successful under the reaction conditions.

### 3.2. Magnetic measurement

The magnetic properties of  $\text{bcc-Fe}/\text{Fe}_3\text{O}_4$ , ALA coated  $\text{Fe}@Fe_3O_4$ , DOTA(Gd)- $\text{Fe}@Fe_3O_4$  was investigated by a SQUID magnetometer at room temperature (300 K) (Fig. 4). The results of hysteresis loops indicated that all the nanoparticles exhibit typically paramagnetic behaviors without magnetic hysteresis. The saturation magnetization ( $M_s$ ) values decrease with the gradual modification of materials. The obtained  $\text{Fe}@Fe_3O_4$  NPs exhibit strong paramagnetic behaviors with  $M_s$  value of  $55$   $\text{emu g}^{-1}$ , which is less than our previous results ( $\sim 100$   $\text{emu g}^{-1}$ ). The decreased  $M_s$  value can be assigned to more thickness of the  $\text{Fe}_3\text{O}_4$  shell. Once the ALA was utilized to decorate the obtained  $\text{Fe}@Fe_3O_4$  NPs, the  $M_s$  value reduced to  $48$   $\text{emu g}^{-1}$ . The reason for the decrease in  $M_s$  value of the NPs may be the phosphate disodium salt shell coating, which decreased magnetic anisotropy. Moreover, as for the DOTA(Gd)- $\text{Fe}@Fe_3O_4$  NPs, the  $M_s$  value decreased to  $32$   $\text{emu g}^{-1}$  which may be because of the content significantly diminishment of iron oxide in the NPs.<sup>35</sup>

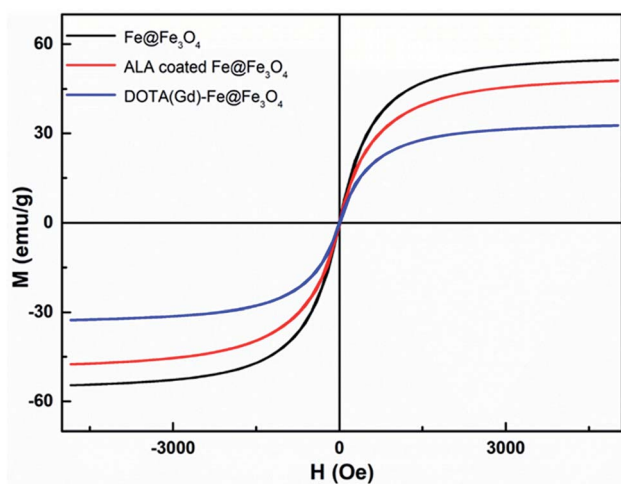


Fig. 4 Magnetization curves of bcc-Fe/Fe<sub>3</sub>O<sub>4</sub>, ALA coated Fe@Fe<sub>3</sub>O<sub>4</sub>, DOTA(Gd)-Fe@Fe<sub>3</sub>O<sub>4</sub>.

The saturation magnetization calculated by the terms of per gram Fe (ESI, Fig. S3†) suggests that the  $M_s$  value increased after conjugating DOTA(Gd) on Fe@Fe<sub>3</sub>O<sub>4</sub>, which is similar with the literature.<sup>28</sup> Nevertheless, Gd ions can realize the spin order at the same direction with the effect of paramagnetic Fe@Fe<sub>3</sub>O<sub>4</sub> NPs when exert an external magnetic field. Certainly, the aforementioned changes lead to form a local magnetic field. Hence, the relaxivity of Gd ions was augmented and the homogeneity of magnetic field for  $T_2$  CA was broke as well, and that is why it is always accompanied by improve the  $T_1$  or  $T_2$  contrast effect.<sup>36</sup> Therefore, we consider that Fe@Fe<sub>3</sub>O<sub>4</sub>@ALA-DOTA(Gd) NPs can show excellent  $T_1$ - $T_2$  dual-modal ability.

To further provide more evidences to support the capability of dual mode  $T_1$ - and  $T_2$ -weighted contrast, a 0.5 T MRI scanner was performed to detect the relaxivity of the ALA coated Fe@Fe<sub>3</sub>O<sub>4</sub> and DOTA(Gd)-Fe@Fe<sub>3</sub>O<sub>4</sub> NPs in aqueous media. The value of  $r_1$  and  $r_2$  were determined by analyzing the fitted curves for the reciprocal of relaxation time to the Fe concentration. As shown in the Fig. 5a and b, the  $r_1$  relaxivity values of ALA coated Fe@Fe<sub>3</sub>O<sub>4</sub> and DOTA(Gd)-Fe@Fe<sub>3</sub>O<sub>4</sub> are 4.1 and 7.2  $\text{mM}^{-1} \text{s}^{-1}$ , while the  $r_2$  relaxivity values are 57.7 and 109.4, respectively. Simultaneously, in order to evaluate the effect of

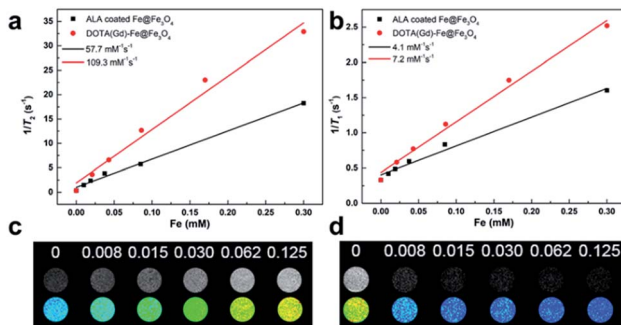


Fig. 5 (a)  $r_1$  and (b)  $r_2$  relaxivity values of ALA coated Fe@Fe<sub>3</sub>O<sub>4</sub> and DOTA(Gd)-Fe@Fe<sub>3</sub>O<sub>4</sub> NPs; (c)  $T_1$ -weighted and (d)  $T_2$ -weighted images of DOTA(Gd)-Fe@Fe<sub>3</sub>O<sub>4</sub> NPs in solution at 0.5 T MR system.

Gd element in NPs, we also made a plot of  $1/T_1$  against concentration of Gd ion. As shown in the picture (ESI, Fig. S4†), the  $r_1$  of DOTA(Gd)-Fe@Fe<sub>3</sub>O<sub>4</sub> NPs is much higher than DOTA(Gd). The results show that the DOTA(Gd)-Fe@Fe<sub>3</sub>O<sub>4</sub> exhibit better relaxivity both for  $r_1$  and  $r_2$ , which is benefit for MRI. To now, the highest  $r$  value for dual mode MR CAs is  $836.7 \pm 51.1$  and  $31.6 \pm 2.6$  for  $r_2$  and  $r_1$  respectively, which is obtained by Long *et al.*<sup>28</sup> at 1.47 T for DOTA conjugated Fe<sub>3</sub>O<sub>4</sub>. Compared with these reported highest values, the  $r$  value of DOTA(Gd)-Fe@Fe<sub>3</sub>O<sub>4</sub> is much lower. However, both of the  $r_2$  and  $r_1$  of DOTA(Gd)-Fe@Fe<sub>3</sub>O<sub>4</sub> are higher than that of the Fe@Fe<sub>3</sub>O<sub>4</sub> and DOTA(Gd) alone. These increased  $r_2$  and  $r_1$  are assigned to an alignment of the electronic spins of the paramagnetic ion by the induced magnetic field generated by the superparamagnetic particles.<sup>28</sup> These results suggest that the prepared DOTA(Gd)-Fe@Fe<sub>3</sub>O<sub>4</sub> shows great potential for MRI contrast.

Then, the  $T_1$ - and  $T_2$ -Weighted images of the DOTA(Gd)-Fe@Fe<sub>3</sub>O<sub>4</sub> was carried out at different Fe concentrations (0 to 0.125 mM) and presented in the Fig. 5c and d. With increasing molar concentration of Fe, the  $T_1$  signal became much brighter, while the  $T_2$  MR contrast became darker, indicating that the DOTA(Gd)-Fe@Fe<sub>3</sub>O<sub>4</sub> NPs could be utilized as a dual-mode MRI CA. Above all, these results show that the DOTA(Gd)-Fe@Fe<sub>3</sub>O<sub>4</sub> NPs will exhibit excellent MR signal both for  $T_1$  and  $T_2$ .

### 3.3. Cytotoxicity assay

To assess the cytotoxic potential effects of DOTA(Gd)-Fe@Fe<sub>3</sub>O<sub>4</sub> NPs *in vitro* and *in vivo* applications, the particles was evaluated *via* an MTT [3-(4,5-dimethylthiazol-2-yl)-2,5-diphenyltetrazolium bromide] assay for two cell lines, 4T1 (a mouse breast cancer cell lines) and HUVEC (a human umbilical vein endothelial cell lines) respectively. As displayed in Fig. 6, the cells that incubated with the NPs (10, 20, 50, 100, 200  $\mu\text{g mL}^{-1}$ ) compared to the contrasts hardly show the remarkable difference even for 24 h, which proved the favorable viability of cells. Furthermore, what counts is that the cell viability still remained above 90% when the concentration reaches to 200  $\mu\text{g mL}^{-1}$ . Above all, the high cell viability indicates that DOTA(Gd)-Fe@Fe<sub>3</sub>O<sub>4</sub> NPs exhibit excellent biocompatibility within the experimental concentration (ESI, Fig. S5†). These results establish the foundation of NPs for further biological applications.

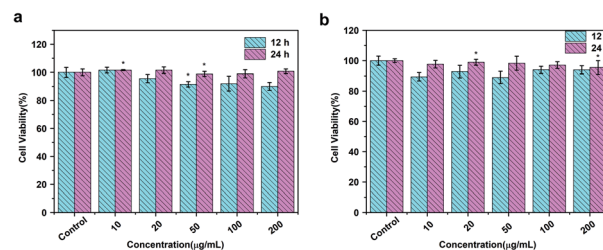


Fig. 6 MTT results of (a) 4T1 and (b) HUVEC cells incubated with DOTA(Gd)-Fe@Fe<sub>3</sub>O<sub>4</sub> NPs in different concentrations for 12 h and 24 h at 37 °C ( $n = 3$ ,  $*p < 0.05$ ).

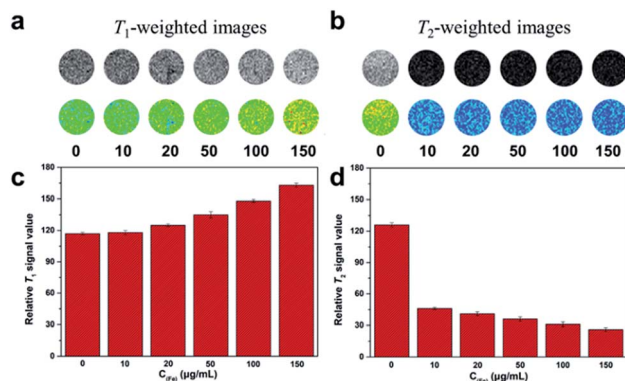


Fig. 7 (a)  $T_1$ - and (b)  $T_2$ -weighted MR imaging of 4T1 cells with various incubate concentration of DOTA(Gd)-Fe@Fe<sub>3</sub>O<sub>4</sub> NPs. (c) and (d) Signal intensity analysis for MR imaging.

### 3.4. Dual $T_1$ - $T_2$ MR imaging in cells

To validate the dual-mode MRI performance of the DOTA(Gd)-Fe@Fe<sub>3</sub>O<sub>4</sub> NPs, various concentrations samples from 10 to 150 µg mL<sup>-1</sup> were utilized to incubate the 4T1 cells for 4 h. The  $T_1$ - and  $T_2$ -weighted MR images and the corresponding signal value of the cells were measured. As displayed in Fig. 7, with DOTA(Gd)-Fe@Fe<sub>3</sub>O<sub>4</sub> NPs concentration increasing in 4T1 cells, as far as we can see, the positive contrast of  $T_1$ -weighted MR images demonstrated an obvious enhancement. Similarly, the 4T1 cells cultivated in particles exhibited a marked negative signal drop with dose-dependent. On the other hand, this point was confirmed *via* collecting the signal intensity changes by quantitative analysis as well. It is worth nothing that DOTA(Gd)-Fe@Fe<sub>3</sub>O<sub>4</sub> NPs (150 µg mL<sup>-1</sup>) enhance the signal value of  $T_1$  by ~39.87% compared to the blank group. Simultaneously, the MR signal intensity of  $T_2$  decreased by ~63.49% after incubation

with DOTA(Gd)-Fe@Fe<sub>3</sub>O<sub>4</sub> NPs even at the lowest concentration. This indicates that the DOTA(Gd)-Fe@Fe<sub>3</sub>O<sub>4</sub> NPs were successfully taken up by 4T1 cells, which indicated that the dipolar interaction of protons and the magnetic moments in the water and cell media. Besides, the MR contrast on both longitudinal ( $T_1$ ) and transverse ( $T_2$ ) proton relaxation time sequences was generated. These results demonstrate that the DOTA(Gd)-Fe@Fe<sub>3</sub>O<sub>4</sub> NPs can be utilized as a platform for dual  $T_1$ - $T_2$  MRI CAS *in vitro*.

### 3.5. MRI *in vivo*

The feasibility of DOTA(Gd)-Fe@Fe<sub>3</sub>O<sub>4</sub> NPs *in vivo* MRI for tumor was further captured by means of 4T1 murine tumor model. In order to realize the test *in vivo*, the mice were performed by DOTA(Gd)-Fe@Fe<sub>3</sub>O<sub>4</sub> NPs (50 µL 0.2 mg mL<sup>-1</sup>, 2 mg kg<sup>-1</sup> of mouse bodyweight) PBS dispersion *via* intratumor injection on a MR imaging scanner. Fig. 8 showed the  $T_1$ - and  $T_2$ -weighted images of tumor acquired before and 0.5 h post injection images, respectively. Through the comparison of these images,  $T_1$ -weighted MR images showed obvious brighter signal. At the same time,  $T_2$ -weighted MR images signal at 30 min become darker. This phenomenon is presumably because of the fact that the rapid diffusion of reagent in the tumor site. Furthermore, the  $T_1$  MR images signal intensity was increased by 70% when compared with pre-injection in tumor. While the  $T_2$  MR images signal intensity also exhibited obvious changes, it was decreased by 20% after 30 min post injection. These results declared that DOTA(Gd)-Fe@Fe<sub>3</sub>O<sub>4</sub> NPs can exhibit positive  $T_1$  or negative  $T_2$  contrast enhancement for tumor MR images simultaneously *via* selecting  $r_1$  or  $r_2$  relaxivities. Therefore, the developed multifunctional DOTA(Gd)-Fe@Fe<sub>3</sub>O<sub>4</sub> NPs are quite fit for a platform to dual  $T_1$ - $T_2$  MR imaging of tumors.

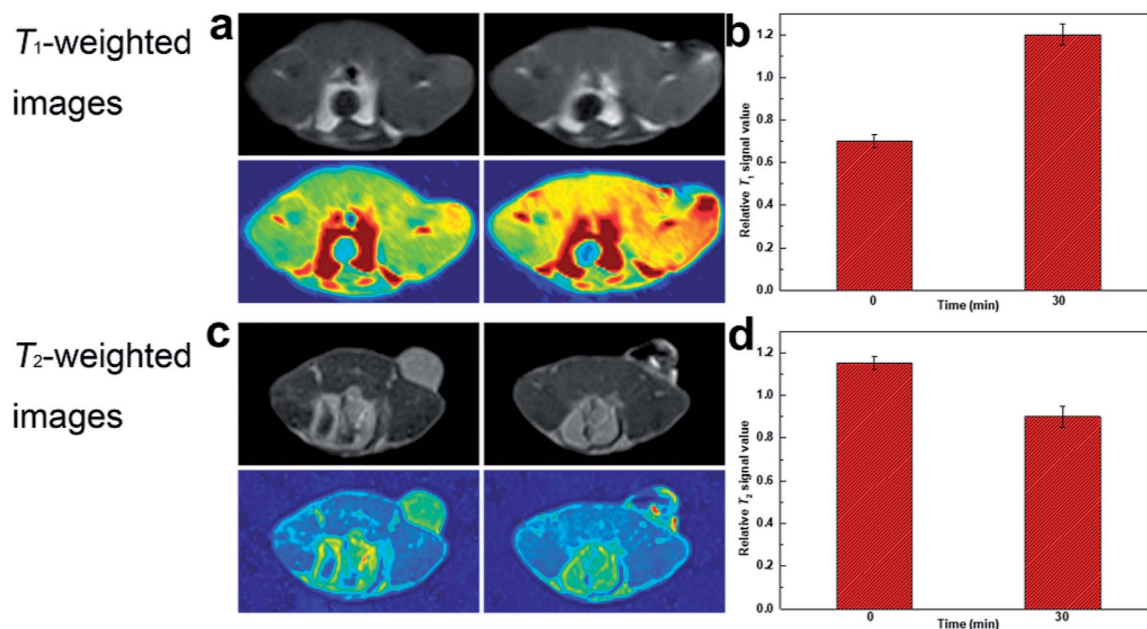


Fig. 8 (a)  $T_1$ -weighted and (c)  $T_2$ -weighted MR images of tumor injected with DOTA(Gd)-Fe@Fe<sub>3</sub>O<sub>4</sub> NPs; (b) and (d) relative signal intensity for  $T_1$ - and  $T_2$ -weighted MR images in tumor.

## 4. Conclusions

In summary, diagnosis is of necessity in clinical application and plays an important role in treatment to some extent. In this work, we successfully manufactured multifunctional Gd-labeled Fe@Fe<sub>3</sub>O<sub>4</sub> NPs that might act as a dual T<sub>1</sub>-T<sub>2</sub> MR CA to reciprocally enhance images of cancer cells both *in vitro* and *in vivo*. These promising NPs have a good biocompatibility and show a high cell viability even at the largest concentration of 200 μg mL<sup>-1</sup>. The accuracy of diagnosis is significantly improved both in positive T<sub>1</sub> and negative T<sub>2</sub> enhancement. The low toxicity and excellent contrast of the developed dual model MRI agents give it a bright future in the clinical application for tumor diagnosis.

## Conflicts of interest

There are no conflicts to declare.

## Acknowledgements

This work was partially supported by National Natural Science Foundation of China (No. 21601124 and 21671135), Program of Young Eastern Scholar from Shanghai Institutions of Higher Learning (QD2015038), Shanghai Rising-Star Program (17QA1402600), the Natural Science Foundation of Shanghai (16ZR1424700), Ministry of Education of China (PCSIRT\_IRT\_16R49), and International Joint Laboratory on Resource Chemistry (IJLRC).

## Notes and references

- 1 Y. Liu, K. Ai, J. Liu, M. Deng, Y. He and L. Lu, *Adv. Mater.*, 2013, **25**, 1353–1359.
- 2 R. Kumar, W. S. Shin, K. Sunwoo, W. Y. Kim, S. Koo, S. Bhuniya and J. S. Kim, *Chem. Soc. Rev.*, 2015, **44**, 6670–6683.
- 3 J. Estelrich, M. J. Sanchez-Martin and M. A. Busquets, *Int. J. Nanomed.*, 2015, **10**, 1727–1741.
- 4 M. Rudin and R. Weissleder, *Nat. Rev. Drug Discovery*, 2003, **2**, 123–131.
- 5 S. R. Cherry, *Annu. Rev. Biomed. Eng.*, 2006, **8**, 35–62.
- 6 B. R. Smith and S. S. Gambhir, *Chem. Rev.*, 2017, **117**, 901–986.
- 7 T. H. Shin, Y. Choi, S. Kim and J. Cheon, *Chem. Soc. Rev.*, 2015, **44**, 4501–4516.
- 8 H. Kobayashi, M. R. Longmire, M. Ogawa and P. L. Choyke, *Chem. Soc. Rev.*, 2011, **40**, 4626.
- 9 Y. Cao, L. Xu, Y. Kuang, D. Xiong and R. Pei, *J. Mater. Chem. B*, 2017, **5**, 3431–3461.
- 10 G. H. Im, S. M. Kim, D.-G. Lee, W. J. Lee, J. H. Lee and I. S. Lee, *Biomaterials*, 2013, **34**, 2069–2076.
- 11 A. Szpak, S. Fiejdasz, W. Prendota, T. Strączek, C. Kapusta, J. Szmyd, M. Nowakowska and S. Zapotoczny, *J. Nanopart. Res.*, 2014, **16**, 2678.
- 12 X. Gao, G. Ji, R. Cui, J. Liu and Z. Liu, *Dalton Trans.*, 2017, **46**, 13686–13689.
- 13 C.-T. Yang, P. Padmanabhan and B. Z. Gulyás, *RSC Adv.*, 2016, **6**, 60945–60966.
- 14 P. M. Robson, D. Dey, D. E. Newby, D. Berman, D. Li, Z. A. Fayad and M. R. Dweck, *JACC: Cardiovascular Imaging*, 2017, **10**, 1165–1179.
- 15 B. Zhou, Z. Xiong, P. Wang, C. Peng, M. Shen, S. Mignani, J.-P. Majoral and X. Shi, *Drug Delivery*, 2018, **25**, 178–186.
- 16 G. Angelovski, *Angew. Chem., Int. Ed.*, 2016, **55**, 7038–7046.
- 17 D. Yoo, J.-H. Lee, T.-H. Shin and J. Cheon, *Acc. Chem. Res.*, 2011, **44**, 863–874.
- 18 T. Tirusew, X. Wenlong, A. Md Wasi, B. Jong Su, C. Yongmin, B. Ji Eun, C. Kwon Seok, K. Tae Jeong and L. Gang Ho, *Nanotechnology*, 2015, **26**, 365102.
- 19 E.-K. Lim, T. Kim, S. Paik, S. Haam, Y.-M. Huh and K. Lee, *Chem. Rev.*, 2015, **115**, 327–394.
- 20 Z. Yi, X. Li, W. Lu, H. Liu, S. Zeng and J. Hao, *J. Mater. Chem. B*, 2016, **4**, 2715–2722.
- 21 J.-s. Choi, J.-H. Lee, T.-H. Shin, H.-T. Song, E. Y. Kim and J. Cheon, *J. Am. Chem. Soc.*, 2010, **132**, 11015–11017.
- 22 Z. Gao, T. Ma, E. Zhao, D. Docter, W. Yang, R. H. Stauber and M. Gao, *Small*, 2016, **12**, 556–576.
- 23 E. Peng, F. Wang and J. M. Xue, *J. Mater. Chem. B*, 2015, **3**, 2241–2276.
- 24 F. Li, D. Zhi, Y. Luo, J. Zhang, X. Nan, Y. Zhang, W. Zhou, B. Qiu, L. Wen and G. Liang, *Nanoscale*, 2016, **8**, 12826–12833.
- 25 M. Yang, L. Gao, K. Liu, C. Luo, Y. Wang, L. Yu, H. Peng and W. Zhang, *Talanta*, 2015, **131**, 661–665.
- 26 T.-H. Shin, J.-s. Choi, S. Yun, I.-S. Kim, H.-T. Song, Y. Kim, K. I. Park and J. Cheon, *ACS Nano*, 2014, **8**, 3393–3401.
- 27 X. Wang, Z. Zhou, Z. Wang, Y. Xue, Y. Zeng, J. Gao, L. Zhu, X. Zhang, G. Liu and X. Chen, *Nanoscale*, 2013, **5**, 8098–8104.
- 28 N. A. Keasberry, M. Banobre-Lopez, C. Wood, G. J. Stasiuk, J. Gallo and N. J. Long, *Nanoscale*, 2015, **7**, 16119–16128.
- 29 Z. Zhou, Y. Sun, J. Shen, J. Wei, C. Yu, B. Kong, W. Liu, H. Yang, S. Yang and W. Wang, *Biomaterials*, 2014, **35**, 7470–7478.
- 30 J. Wang, H. Zhao, Z. Zhou, P. Zhou, Y. Yan, M. Wang, H. Yang, Y. Zhang and S. Yang, *ACS Appl. Mater. Interfaces*, 2016, **8**, 19872–19882.
- 31 X. Mu, C. Yan, Q. Tian, J. Lin and S. Yang, *Int. J. Nanomed.*, 2017, **12**, 7207–7223.
- 32 Y. Leng, K. Sato, Y. Shi, J.-G. Li, T. Ishigaki, T. Yoshida and H. Kamiya, *J. Phys. Chem. C*, 2009, **113**, 16681–16685.
- 33 L. Wang, H. Zhang, Z. Zhou, B. Kong, L. An, J. Wei, H. Yang, J. Zhao and S. Yang, *J. Mater. Chem. B*, 2015, **3**, 1433–1438.
- 34 G. Zhang, R. Du, L. Zhang, D. Cai, X. Sun, Y. Zhou, J. Zhou, J. Qian, K. Zhong, K. Zheng, D. Kaigler, W. Liu, X. Zhang, D. Zou and Z. Wu, *Adv. Funct. Mater.*, 2015, **25**, 6101–6111.
- 35 K. H. Bae, Y. B. Kim, Y. Lee, J. Hwang, H. Park and T. G. Park, *Bioconjugate Chem.*, 2010, **21**, 505–512.
- 36 Z. Zhou, C. Wu, H. Liu, X. Zhu, Z. Zhao, L. Wang, Y. Xu, H. Ai and J. Gao, *ACS Nano*, 2015, **9**, 3012–3022.