



# Identification of areas of very high biodiversity value to achieve the EU Biodiversity Strategy for 2030 key commitments

Iulia V. Miu<sup>1</sup>, Laurentiu Rozyłowicz<sup>1,2</sup>, Viorel D. Popescu<sup>1,3</sup> and Paulina Anastasiu<sup>4</sup>

<sup>1</sup>Center for Environmental Research, University of Bucharest, Bucharest, Romania

<sup>2</sup>Chelonia Romania, Bucharest, Romania

<sup>3</sup>Department of Biological Sciences, Ohio University, Athens, OH, United States of America

<sup>4</sup>Dimitrie Brândză Botanical Garden, University of Bucharest, Bucharest, Romania

## ABSTRACT

**Background.** The European Union strives to increase protected areas of the EU terrestrial surface to 30% by year 2030, of which one third should be strictly protected. Designation of the Natura 2000 network, the backbone of nature protection in the EU, was mostly an expert-opinion process with little systematic conservation planning. The designation of the Natura 2000 network in Romania followed the same non-systematic approach, resulting in a suboptimal representation of invertebrates and plants. To help identify areas with very high biodiversity without repeating past planning missteps, we present a reproducible example of spatial prioritization using Romania's current terrestrial Natura 2000 network and coarse-scale terrestrial species occurrence.

**Methods.** We used 371 terrestrial Natura 2000 Sites of Community Importance (Natura 2000 SCI), designated to protect 164 terrestrial species listed under Annex II of Habitats Directive in Romania in our spatial prioritization analyses (marine Natura 2000 sites and species were excluded). Species occurrences in terrestrial Natura 2000 sites were aggregated at a Universal Traverse Mercator spatial resolution of 1 km<sup>2</sup>. To identify priority terrestrial Natura 2000 sites for species conservation, and to explore if the Romanian Natura 2000 network sufficiently represents species included in Annex II of Habitats Directive, we used Zonation v4, a decision support software tool for spatial conservation planning. We carried out the analyses nationwide (all Natura 2000 sites) as well as separately for each biogeographic region (i.e., Alpine, Continental, Pannonian, Steppic and Black Sea).

**Results.** The results of spatial prioritization of terrestrial Natura 2000 vary greatly by planning scenario. The performance of national-level planning of top priorities is minimal. On average, when 33% of the landscape of Natura 2000 sites is protected, only 20% of the distribution of species listed in Annex II of Habitats Directive are protected. As a consequence, the representation of species by priority terrestrial Natura 2000 sites is lessened when compared to the initial set of species. When planning by taxonomic group, the top-priority areas include only 10% of invertebrate distribution in Natura 2000. When selecting top-priority areas by biogeographical region, there are significantly fewer gap species than in the national level and by taxa scenarios; thusly, the scenario outperforms the national-level prioritization. The designation of strictly

Submitted 14 July 2020

Accepted 8 September 2020

Published 30 September 2020

Corresponding author

Laurentiu Rozyłowicz,  
laurentiu.rozylowicz@g.unibuc.ro

Academic editor

Sheila Colla

Additional Information and  
Declarations can be found on  
page 15

DOI 10.7717/peerj.10067

© Copyright  
2020 Miu et al.

Distributed under  
Creative Commons CC-BY 4.0

OPEN ACCESS

protected areas as required by the EU Biodiversity Strategy for 2030 should be followed by setting clear objectives, including a good representation of species and habitats at the biogeographical region level.

**Subjects** Conservation Biology, Ecology, Natural Resource Management, Spatial and Geographic Information Science

**Keywords** Protected areas, Spatial prioritization, Biogeographic regions, Designation of strictly protected areas, Systematic conservation planning, Natura 2000, Romania

## INTRODUCTION

Protected areas, a critical tool for nature conservation strategies, are intended to ensure the long-term persistence and viability of biodiversity. These areas should support many rare, threatened, or endemic taxa, particularly those with low mobility and high sensitivity to environmental alterations (*Geldmann et al., 2013; Gray et al., 2016; Possingham et al., 2006; Rodrigues et al., 2004*). When planning protected areas, states around the world are guided by supranational policies such as Convention on Biological Diversity and EU Biodiversity Strategy for 2030, which issue ambitious objectives to increase the extent of protected areas. For example, Convention on Biological Diversity (CDB) Aichi Target on Protected Areas calls for the protection of 17% of the world's terrestrial and inland water areas in key regions for biodiversity and ecosystem services (*UNEP, 2011*), while the EU Member States seek to increase by 2030 the Natura 2000 network to 30% of which one third should be under strict protection as areas of very high biodiversity and climate value (*European Commission, 2020*).

A promising tool to help build an ecologically-sound network of protected areas meeting the CDB or EU targets is systematic conservation planning (*Margules & Pressey, 2000*). Systematic conservation planning maximizes conservation benefits while minimizing impacts on other resources, such as the availability of productive land. Spatial conservation prioritization, as a part of systematic conservation planning, customarily relies on the complementarity concept (i.e., selection of complementary areas to avoid duplication of conservation effort) and is considered an efficient instrument for identifying spatial priorities and achieving conservation goals (*Margules & Pressey, 2000; Pressey et al., 2007*).

One of the most extensive networks of conservation areas in the world is the Natura 2000 network, which has been created to operationalize EU Birds (*Directive 2009/147/EC, 2020*) and Habitats Directives (*Council Directive 92/43/EEC, 2020*). To date, Natura 2000 encompasses 18% of EU terrestrial area, thus meeting the CDB Aichi Target on Protected Areas (*UNEP, 2011*). The effectiveness and representativity of Natura 2000 were evaluated for different taxonomic groups and geographic areas, and the conclusions tended to highlight suboptimal planning (*D'Amen et al., 2013; Dimitrakopoulos, Memtsas & Troumbis, 2004; Kukkala et al., 2016; Lisón, Palazón & Calvo, 2013; Müller, Schneider & Jantke, 2018; Müller, Schneider & Jantke, 2020; Votsi, Zomeni & Pantis, 2016*). The suboptimal planning of Natura 2000 at the EU and at Member States levels originates from an uncoordinated process (*Apostolopoulou & Pantis, 2009; Iojă et al., 2010*;

*Lisón et al., 2017; Orlikowska et al., 2016*), which was partially resolved by selecting new sites after expert-opinion evaluations during the Natura 2000 biogeographical seminars (*Kenig-Witkowska, 2017; Manolache et al., 2017*). Furthermore, the efficacy of the Natura 2000 network was extensively re-evaluated from other perspectives, for example, for understanding the effect of climate change on representativity (*Araújo et al., 2011; Popescu et al., 2013*) and for coordinating conservation investments (*Hermoso et al., 2017; Nita et al., 2016*).

The designation of the Natura 2000 network in Romania followed the same non-systematic approach. The process started in 2007 with the designation of 273 Sites of Community Importance covering Habitats Directive and 108 Special Protection Areas under Birds Directive. This process continues in the present; nowadays, there are 606 designated Natura 2000 sites (Sites of Community Importance and Special Protection Areas) that encompass 23% of the total country's land area (54,214 km<sup>2</sup>) (*Directorate-General for the Environment, 2020; Manolache et al., 2017*). Of these, 426 are terrestrial Natura 2000 Sites of Community Importance, covering 40,310 km<sup>2</sup> (17% of Romania's terrestrial surface) (*Directorate-General for the Environment, 2020; EIONET, 2020*). During the first two designation stages, the process was highly biased towards overlapping existing national protected areas (*Ioja et al., 2010; Manolache et al., 2017*), and thus, even if the CBD 17% target is met, the effectiveness of Natura 2000 in representing habitats and species is questionable. For example, *Ioja et al. (2010)* confirmed that overlapping existing national protected areas resulted in a suboptimal representation of plants and invertebrates; *Miu et al. (2018)* highlighted underrepresentation of agricultural landscape in Dobrogea, while *Mânzu et al. (2013)* and *Popescu et al. (2013)* concluded that the Natura 2000 network would not protect plants, reptiles, or amphibians if species ranges shift under climate change scenarios.

With the latest extensions, the Romanian Natura 2000 network encompasses all species and habitats listed in Habitats and Birds Directives (*Directorate-General for the Environment, 2020; Manolache et al., 2017*); however, the new EU Biodiversity Strategy for 2030 requires an increase from 23% to 30% of the total terrestrial country's area of which one third should be under strict protection as areas of very high biodiversity and climate value (*European Commission, 2020*). To help identify areas with very high biodiversity and to provide an example of systematic planning of a protected area network, we present a reproducible spatial prioritization case study using Romania's current terrestrial Natura 2000 network and coarse-scale terrestrial species occurrence (marine Natura 2000 sites and species were excluded). The objectives of this study are (1) to identify candidate sites for designation as areas of very high biodiversity within the Romanian terrestrial Natura 2000 network in national, taxa-specific and biogeographical levels spatial prioritization scenarios and (2) to investigate the extent to which the areas of very high biodiversity within terrestrial Natura 2000 network cover the species listed in Annex II of Habitats Directive in national, taxa-specific and biogeographical levels spatial prioritization scenarios. The European Union assesses the effectiveness of Natura 2000 network in protecting species and habitats listed in Birds and Habitats Directives at the Member State level but also at the

biogeographic level ([Evans, 2012](#)); thus, we performed the analyses at both administrative levels.

## METHODS

### Natura 2000 sites and species

The dataset used in our planning analysis included 371 terrestrial Natura 2000 Sites of Community Importance (Natura 2000 SCI), designated to protect 164 terrestrial species listed under Annex II of Habitats Directive in Romania. The initial database included 426 Natura 2000 SCI and 166 species ([EIONET, 2020](#)), from which we excluded seven sites with a small area ( $<1 \text{ km}^2$ , the spatial resolution of our data), 48 terrestrial sites designed only for habitat protection, and two marine species (the common bottlenose dolphin - *Tursiops truncatus*, and the harbor porpoise - *Phocoena phocoena*) ([Data S1](#)). We used only terrestrial sites and species to match the EU commitment to designate by 2030 as strictly protected one-third of protected areas separately on land and at sea ([European Commission, 2020](#)). Of the 164 species protected by this terrestrial Natura 2000 network, 26 are mammals, six are reptiles, six are amphibians, 26 are fish, 54 are invertebrates, and 46 are plants. The number of species protected within a Natura 2000 site varies between one (46 sites protect only one species) and 62 (Iron Gates). The terrestrial sites with the largest number of protected species ( $>40$  species) are Iron Gates, Domogled—Valea Cernei, Calimani—Gurghiu, Danube Delta, Cheile Nerei—Beusnita, Fagaras Mountains, and Tur River. The largest Natura 2000 sites in terms of surface area ( $>1,200 \text{ km}^2$ ) are Danube Delta, Fagaras Mountains, Frumoasa, Calimani—Gurghiu, and Iron Gates ([Rozyłowicz et al., 2019](#)).

To map species occurrences in terrestrial Natura 2000, we used site-level occurrence data included in the Natura 2000 Standard Data Forms ([EIONET, 2020](#)). Site-level occurrence records were aggregated at a Universal Traverse Mercator spatial resolution of  $1 \text{ km}^2$  (UTM  $1 \times 1 \text{ km}$ ). Thus, if a species was included in the Standard Data Form (recorded for the respective Natura 2000 site), each cell of that site was considered as having that species present. We followed this approach due to the absence of finer scale species distribution data in Romania for Natura 2000 taxa, which makes species distribution modelling impractical for all Natura 2000 taxa. While the coarse spatial resolution likely overestimates the distribution of several range-restricted taxa, data at protected area level, rather than within protected areas, is currently used for official biogeographical assessments of conservation status of species and habitats in Romania under Article 17 of the Habitats Directive ([EIONET, 2020](#)). The likely outcome of overestimating the distribution of some species for this prioritization study, which focuses on species-rich areas (Additive Benefit Function algorithm, see section *Priority ranking of terrestrial Natura 2000 sites*), is that some protected areas may emerge as top priorities despite the fact that some species are occurring only within a relatively small area within those respective protected areas. Thus, the prioritization results should be interpreted as a Natura 2000 site with a certain proportion to be designated as strictly protected areas and not as the exact position of top priority grid cells. As such, this approach closely matches the approach to conservation

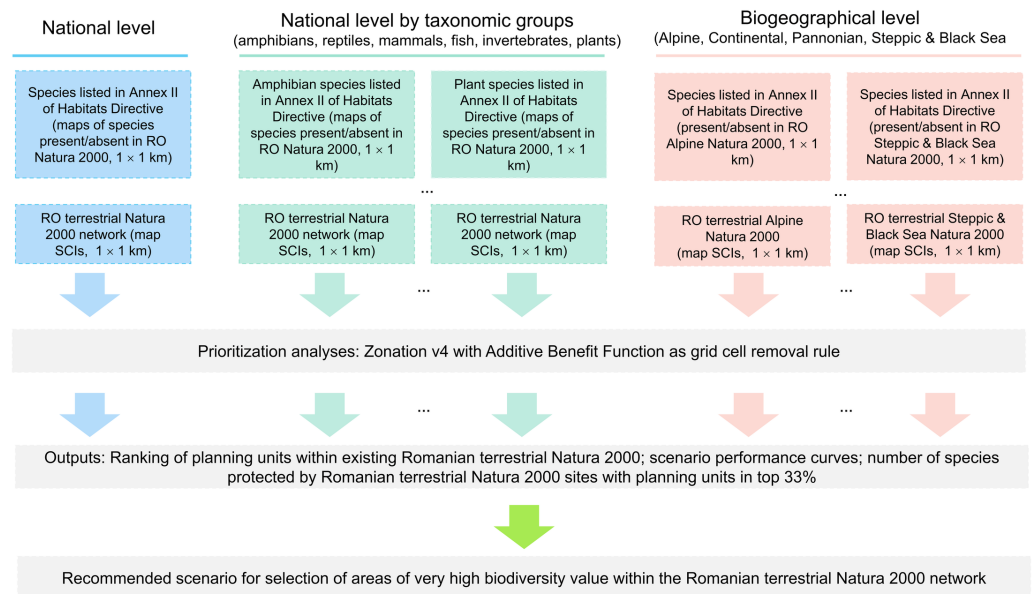
planning in Romania, which uses species lists to establish protected areas of various sizes and acknowledges that species may only occur in discrete units within a given protected area (EIONET, 2020).

The Natura 2000 sites and species considered here were further sorted by biogeographic region. Because Romania lies at the geographic center of Europe (Rey et al., 2007), Natura 2000 network overlaps five terrestrial biogeographical regions, out of the nine regions recognized by the European Union, i.e., Alpine, Continental, Pannonian, Steppic and Black Sea (Rozyłowicz et al., 2019). Due to its small size, the terrestrial part of Black Sea region was merged with the Steppic biogeographic region (Steppic and Black Sea region in our analysis). Of the 164 terrestrial species, 110 are found in the Alpine Biogeographic Region, 143 in the Continental Biogeographic Region, 76 in the Pannonian Biogeographic Region, and 78 in the Steppic and Black Sea Biogeographic Region. Several species were found in 2 or 3 biogeographic regions due to their wide geographic range (e.g., *Bombina bombina*, *Bombina variegata*, *Emys orbicularis*) or because they inhabit a greater range of habitats (e.g., *Lutra lutra*) (Data S1).

### Priority ranking of terrestrial Natura 2000 sites

To identify priority terrestrial Natura 2000 sites for species conservation and to explore these areas adequately representing species included in Annex II of Habitats Directive, we used Zonation v4, a decision-support software tool for spatial conservation planning with Natura 2000 sites as planning units (Lehtomäki & Moilanen, 2013; Moilanen, 2007). We analyzed three priority ranking scenarios: (1) nationwide, (2) nationwide for several taxonomic groups separately (amphibians, reptiles, mammals, fish, invertebrates and plants), and (3) separately for each biogeographic region across all taxonomic groups (Alpine, Continental, Pannonian, Steppic and the Black Sea biogeographic regions) (Fig. 1). Zonation produces a priority ranking by iteratively removing planning units (Natura 2000 sites in our case) with the lowest total marginal loss of conservation value while accounting for total and remaining distributions of protected species (Moilanen et al., 2014). Priority ranking starts from the full Natura 2000 network, and the planning units are iteratively removed until there are none remaining. Least valuable sites (e.g., low species richness) are removed first, while the valuable sites (e.g., high species richness) are kept until the end (Di Minin et al., 2014).

Zonation provides four cell removal rules (Core-area Zonation, Additive benefit function, Target-based planning and Generalized benefit function). For our case study, we used additive benefit function with exponent  $z = 0.25$  (the default value for species sensitivity to habitat loss), a cell removal rule with a summation structure (Moilanen et al., 2014; Moilanen, 2007; Moilanen et al., 2005), which gives higher priority to planning units with a higher number of species present and tended to remove biodiversity-poor cells even if they include rare species. Thus, planning with additive benefit function may result in a selection of top priority areas that have higher performance on average, but retains a lower minimum proportion of original distributions for rare species (Arponen et al., 2005; Moilanen et al., 2014). The additive benefit function fits well to our prioritization



**Figure 1** Flowchart illustrating the spatial prioritization process (national, taxa-specific and biogeographical levels spatial prioritization scenarios).

Full-size DOI: [10.7717/peerj.10067/fig-1](https://doi.org/10.7717/peerj.10067/fig-1)

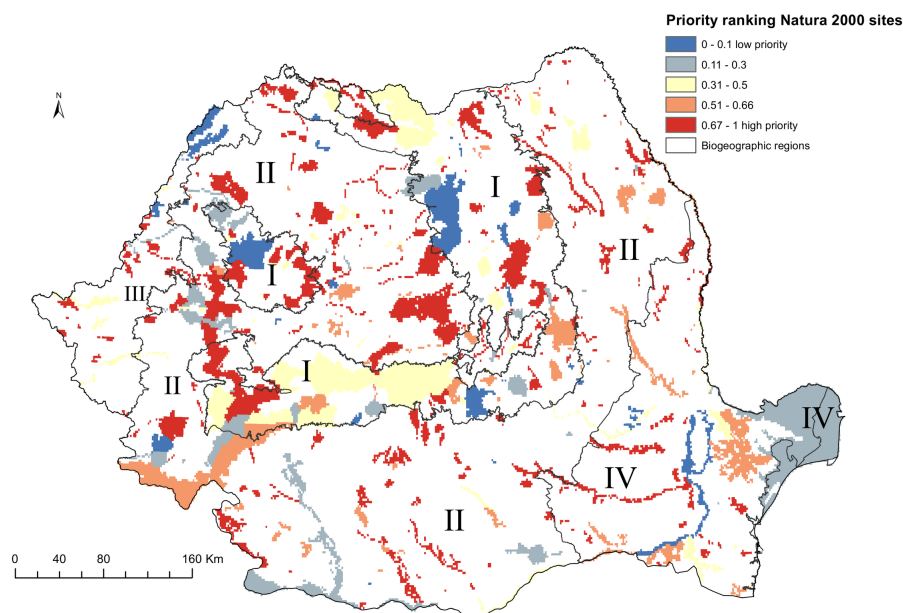
objective—identification of high biodiversity value protected areas within the Romanian terrestrial Natura 2000 network.

The outputs of the priority analyses provide the ranking of grid cells within Natura 2000 sites according to their contribution in covering protected species (0 = cells with the lowest priority; 1 = cells with the highest priority). The ranking scores exhibit a uniform distribution; thus, the top spatial conservation priorities (e.g., top 33% of the Natura 2000 network) have a Zonation ranking of  $\geq 0.67$ . The ranking maps are paired with the performance curves that describe the extent to which each species is retained in any given high-priority or low-priority fraction of the Natura 2000 network (Moilanen *et al.*, 2005; Moilanen, Leathwick & Quinn, 2011). Because we used Natura 2000 as a planning unit layer, our analysis can be used to infer how much of a Natura 2000 site should be designated as strictly protected in order to reach one third objective at network level.

## RESULTS

### Prioritization of Natura 2000 sites at the national level

Terrestrial Natura 2000 sites represented as 1 × 1 km grid cells cover 48954 cells (20.24% of Romanian territory), of which 4920 overlaps less than 5% with the respective protected area. The Natura 2000 sites with high priority grid cells extend over the Carpathians and Transylvania (Fig. 2). Outside of Carpathians (Eastern and Southern Romania), the top-priority Natura 2000 sites were principally located along river corridors. The sites with the largest number of grid cells labeled as priority for conservation ( $>400 \text{ km}^2$ ) are Sighisoara Tarnava Mare, Muntii Ciucului, Trascau, Valea Izei si Dealul Solovan, Muntele Ses, Retezat, Podisul Lipovei Poiana Rusca, Dealurile Tarnavei Mici Biches, Semenic Cheile



**Figure 2** High priority sites for designation as areas under strict protection (national level prioritization scenario). Grid cells within the Romanian terrestrial Natura 2000 network have been graded according to their priority, with the highest-priority sites (top 33%) shown in red. Biogeographic regions are numbered as follows: I (Alpine), II (Continental), III (Pannonian), IV (Steppic and terrestrial Black Sea).

Full-size [DOI: 10.7717/peerj.10067/fig-2](https://doi.org/10.7717/peerj.10067/fig-2)

Carasului. A notable exception is the Natura 2000 site overlapping the lower course of Ialomita river in Eastern Romania (Fig. 2, Data S2).

Top-priority sites in national level scenario cover 37% of Natura 2000 protected grid cells in Alpine biogeographic region, 28% of protected grid cells in Continental biogeographic region, 22% in Pannonian biogeographic region, and 12% of Natura 2000 protected grid cells in the Steppic and the Black Sea biogeographic region (Fig. 2, Data S2).

The performance of national-level planning of top priorities is minimal. On average, when 33% of landscape of Natura 2000 sites is protected, only 20% of distribution of species listed in Annex II of Habitats Directive are protected (Fig. S1). As a consequence, the representation of species by priority terrestrial Natura 2000 sites is lessened when compared to the initial set of species, with 20 species (12%) not covered by the top 33% of protected grid cells. The missed species include plants (12 species), invertebrates (4 species), fish (2 species) and mammals (2 species) (Table 1, Data S3).

### Prioritization of Natura 2000 sites at national level by taxonomic group

When priority ranking maps are organized by taxonomic group, the top-priority sites are dissimilar to the results of national level prioritization (Fig. 3). For amphibians, the ranking map (Fig. 3B) indicates that sites with high priority grid cells for conservation are spatially grouped in the western and central parts of Romania, while for reptiles, the sites were clustered in the southwestern and southeastern part of Romania (Fig. 3B). For mammals and plants, most of the high-priority sites are spatially grouped in the Carpathians and

**Table 1** Representation of protected species by Natura 2000 sites with grid cells selected as high priority in national level prioritization scenario (gap and most represented species).

Taxonomic group	Species	Number of top 33% Natura 2000 sites covering the species
Plants	<i>Centaurea jankae</i> , <i>Potentilla emilii-poppii</i> , <i>Centaurea pontica</i> , <i>Dracocephalum austriacum</i> , <i>Ferula sadleriana</i> , <i>Gladiolus palustris</i> , <i>Stipa danubialis</i> , <i>Thlaspi jankae</i> , <i>Tulipa hungarica</i> , <i>Paeonia officinalis</i> subsp. <i>banatica</i> , <i>Colchicum arenarium</i> , <i>Saxifraga hirculus</i>	0
	<i>Ligularia sibirica</i>	17
	<i>Graphoderus bilineatus</i> , <i>Stenobothrus eurasius</i> , <i>Isophya harzi</i> , <i>Vertigo moulinsiana</i>	0
Invertebrates	<i>Lucanus cervus</i>	41
	<i>Cobitis elongata</i> , <i>Rutilus pigus</i>	0
Fish	<i>Barbus meridionalis</i>	62
	–	0
Amphibians	<i>Bombina variegata</i>	108
	–	0
Reptiles	<i>Emys orbicularis</i>	24
	<i>Mustela lutreola</i> , <i>Rhinolophus mehelyi</i>	0
Mammals	<i>Lutra lutra</i>	110

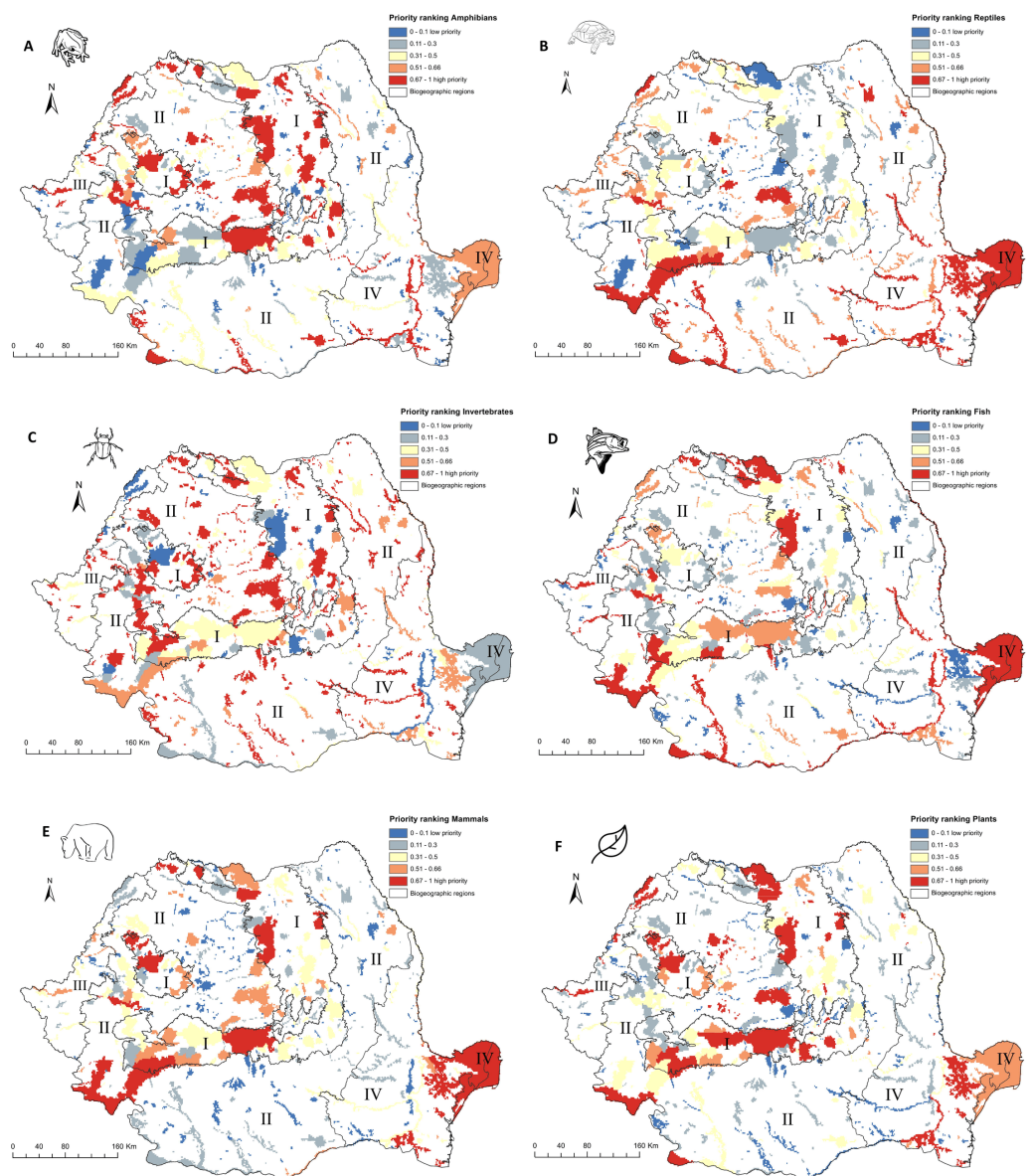
Dobrogea areas, regions with large protected areas and high species richness. High priority Natura 2000 sites for invertebrates and fish are dispersed within the country (Figs. 3C–3F).

The performance of top-priority Natura 2000 sites in representing species distribution varies by taxonomic group (Fig. S2). For invertebrates, the prioritization ranking indicates that if the top 33% of the landscape included in Natura 2000 sites is strictly protected, on average only 20% of the invertebrate distributions in Natura 2000 are also protected; this is followed by the amphibian group, with over 50% of the amphibian distribution in Natura 2000 protected. For reptiles, Natura 2000 performs better, with over 90% of the distribution of reptiles in strictly protected areas. For mammals, fish, and plants, the Romanian Natura 2000 network performs very well, with more than 75% of distribution of the respective species strictly protected when the identified top priority 33% of Natura 2000 area is protected.

### Prioritization of Natura 2000 sites at biogeographical level

Within the Alpine biogeographic region, the high-priority areas are in Western Carpathians (Natura 2000 sites overlapping Trascau and Apuseni Mountains), Southern Carpathians (Natura 2000 sites overlapping Retezat, Domogled, Cerna, Cozia Mountains), and Eastern Carpathians (Natura 2000 sites overlapping Maramures and Gurghiu Mountains) (Fig. 4A, Data S2). Within the Continental biogeographic region, the main high-priority areas overlap Natura 2000 sites in Iron Gates, Semenic, Cheile Nerei (SW Romania), Sighisoara Tarnava Mare (center of Romania), Dealurile Clujului de Est (center of Romania), Tur

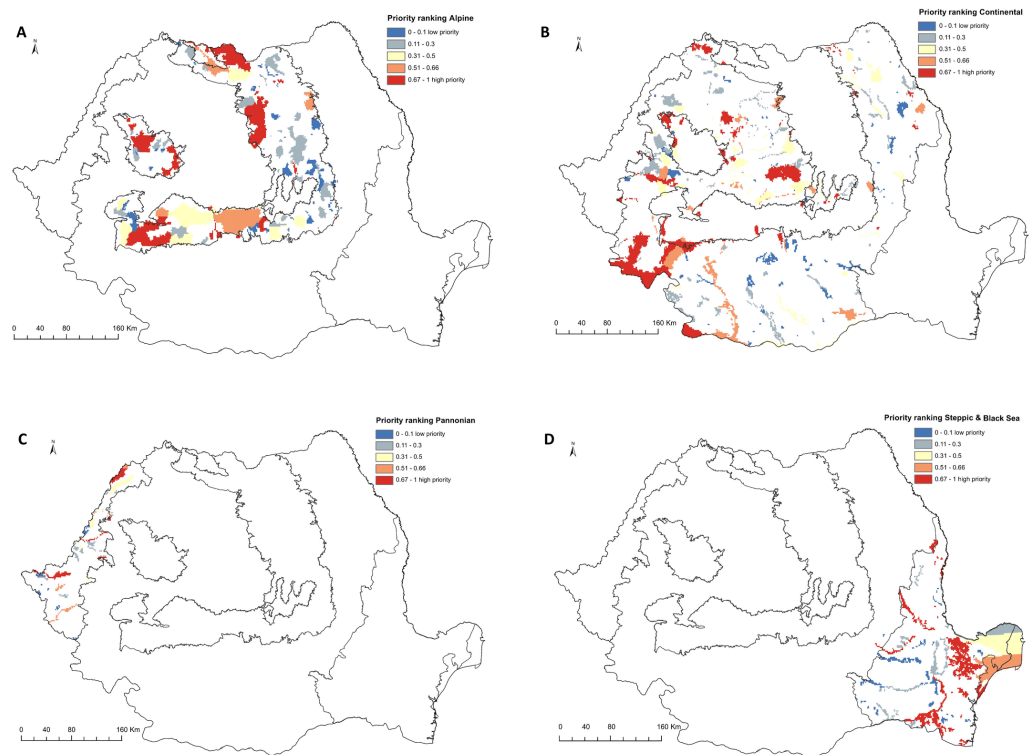




**Figure 3** High priority sites for designation as areas under strict protection (taxonomic level prioritization scenario). Grid cells within the Romanian terrestrial Natura 2000 network have been graded according to their priority, with the highest-priority sites (top 33%) shown in red. Biogeographic regions are numbered as follows: I (Alpine), II (Continental), III (Pannonian), IV (Steppic and terrestrial Black Sea). (A) Amphibians. (B) Reptiles. (C) Invertebrates. (D) Fish. (E) Mammals. (F) Plants.

Full-size [DOI: 10.7717/peerj.10067/fig-3](https://doi.org/10.7717/peerj.10067/fig-3)

River (northwest of Romania), and Ciuperceni - Desa (south) (Fig. 4B, Data S2). In the Pannonian biogeographic region, the main high-priority area is in the Lower Mures Floodplain and Carei Plain (western part of Romania) (Fig. 4C, Data S2). In the Steppic and terrestrial Black Sea biogeographic regions, the high-priority areas are North-Dobrogea Tableland, Macin Mountains, Canaralele Dunarii, and Padurea si Valea Canaraua Fetii -Iortmac and Lower Siret Floodplain (Fig. 4D, Data S2).

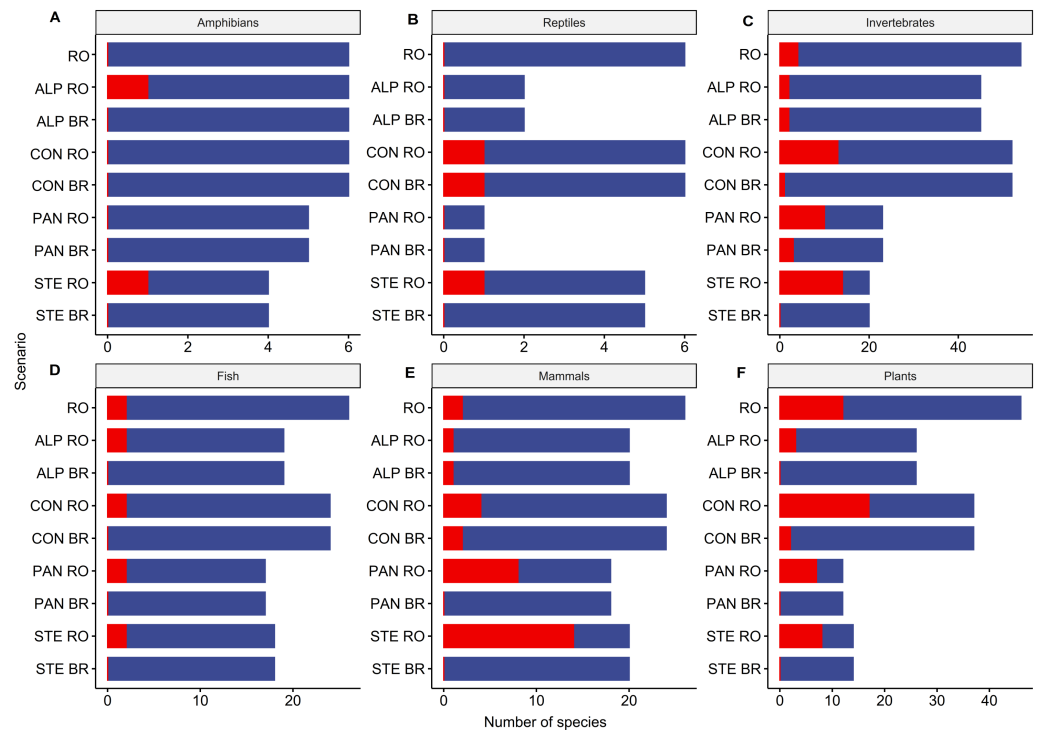


**Figure 4** High priority sites for designation as areas under strict protection (biogeographical level prioritization scenario). Grid cells within the Romanian terrestrial Natura 2000 network have been graded according to their priority, with the highest-priority sites (top 33%) shown in red. (A) Alpine biogeographic region. (B) Continental biogeographic region. (C) Pannonian biogeographic region. (D) Steppic and terrestrial Black Sea biogeographic region.

Full-size [DOI: 10.7717/peerj.10067/fig-4](https://doi.org/10.7717/peerj.10067/fig-4)

The performance of Natura 2000 by biogeographical region is similar for Alpine, Steppic & terrestrial Black Sea and Pannonian. In these regions, when the top 33% of the respective region is strictly protected, between 55% and 65% of the distribution of covered species is strictly protected. The Continental biogeographic region performs better when considering that 33% of landscape of Natura 2000 sites are strictly protected; nearly 75% of the distribution of species listed in Annex II of HD are strictly protected (Fig. S3).

The biogeographic level planning scenario produced fewer gap species (i.e., not covered within the strictly protected area network) than the national level scenario when selecting top priorities (Fig. 5, Data S3). Out of 118 species included in Alpine biogeographic region, 9 are gap species if planning is done at the national level and 3 if planning is done at the biogeographical level. Of 149 species in Continental biogeographic region, 37 are gap species when prioritization is done at the national level and 6 when it is done at the biogeographical level. Furthermore, out of 75 species represented in Pannonian biogeographic region, 27 are gap species in national-level scenario and only 3 in biogeographical level scenario. Also, the number of gap species is reduced when planning is done at the Steppic and terrestrial Black Sea biogeographic region level, with no gap species out of 38 in national-level scenarios and only 12 species in biogeographical level scenarios.



**Figure 5** Species representation in the top 33% planning units by prioritization scenarios. (A) Amphibians, (B) Reptiles, (C) Invertebrates, (D) Fish, (E) Mammals, (F) Plants. Red = gap species (never included in Natura 2000 sites with high priority grid cells in the respective scenario), Blue = covered species (included in Natura 2000 sites with high priority grid cells in the respective scenario). RO = national level scenario. ALP RO = Alpine EBR in national level scenario. ALP BR = Alpine EBR in biogeographical level scenario; CON RO = Continental EBR in national level scenario. CON BR = Continental EBR in biogeographical level scenario; PAN RO = Pannonian EBR in national level scenario. PAN BR = Pannonian EBR in biogeographical level scenario; STE RO = Steppic and terrestrial Black Sea EBR in national level scenario. STE BR = Steppic and terrestrial Black Sea EBR in biogeographical level scenario.

Full-size DOI: [10.7717/peerj.10067/fig-5](https://doi.org/10.7717/peerj.10067/fig-5)

## DISCUSSION

The EU Biodiversity Strategy for 2030 acknowledges that the current network of protected areas, including those under strict protection, is not sufficiently large to safeguard Europe's biodiversity in the face of multiple stressors. To overcome this issue, the European Commission set ambitious conservation objectives for Member States, such as the enlargement of protected areas to at least 30% of terrestrial national territory in Europe, of which one-third should be strictly protected (*European Commission, 2020*). To support policymakers in establishing criteria and guidance for meeting the objective of one-third of protected areas under strict protection, we tested three spatial conservation prioritization scenarios using the Romanian terrestrial Natura 2000 network as a case study. Our analyses suggest that selecting strictly protected areas at the European Biogeographical Region level performs better than nationwide or taxa-specific planning scenarios in terms of species representation and spatial evenness of selected sites.

The EU Biodiversity Strategy for 2030 outlines key principles designation of areas of very high biodiversity value, such as including carbon-rich ecosystems (old-growth forests, peatlands) or outermost regions. The strategy also stipulates potential planning scenarios, e.g., at EU biogeographical regions, national level ([European Commission, 2020](#)). Because the backbone of strictly protected areas will be within the Natura 2000 network, which already covers over 17% of EU land, these areas with high biodiversity value should also ensure the long-term survival of species and habitats listed in Birds and Habitats Directives ([Evans, 2012](#)), therefore contributing to the implementation of the two Directives by the EU Member States.

In the case of Romanian terrestrial protected areas, when spatial conservation prioritization is done at the national level, the top 33% protected grid cells cover, on average, less than 18% of Habitats Directive-listed species occurrences within the existing Natura 2000 (see [Fig. 2, Data S2](#)). The limited coverage of most species indicates that prioritization at a national level is insufficient to ensure that the favorable conservation status is maintained for most species listed in Habitats Directive. Most species that would not be represented in strictly protected areas are plants; 46 plant species will be strictly protected in areas of less than 10 km<sup>2</sup>, which may be sufficient only for some range-restricted species since efficient management requires specific measures such as fencing or manual mowing ([Heywood, 2019](#)). National-level prioritization will also lead to a lack of representation of endangered mammals, such as the European mink *Mustela lutreola* and the marbled polecat *Vormela peregusna*. Under the national level prioritization, most of Natura 2000 sites are located within the Continental biogeographic region (51% of priority areas and 48% of the region). The Alpine biogeographic region, which harbors most of the remaining old-growth forests in the Carpathian Mountains ([Veen et al., 2010](#)), had a relatively low contribution to high-value priority areas (27% of Alpine region) (see [Data S1](#)). The Continental region, which in this scenario would constitute the backbone of strictly protected areas, include many common species when compared to other biogeographic regions ([Gruber et al., 2012](#); [Rozyłowicz et al., 2019](#)); thus, rare species inhabiting Alpine, Steppic and terrestrial Black Sea regions would not be represented in strictly protected areas without a significant expansion of protected areas network. This finding corroborates previous work that found that more than 50% of sites from Alpine, Steppic, and terrestrial Black Sea regions are important for the cohesion of the Natura 2000 network at the national level ([Rozyłowicz et al., 2019](#)).

The limited contribution of the national-level prioritization scenario may be due to the prioritization algorithm selected for this analysis (Additive Benefit Function), which favors Natura 2000 sites with high species richness ([Di Minin et al., 2014](#)). Using other removal rules, such as Core-Area Zonation, which strives to provide the best representation for each individual species, would result in better representation of range-restricted species; as a result, Natura 2000 sites with a high number of endemic species would be retained as areas of high biodiversity value ([Kukkala et al., 2016](#)); however, forests and other important carbon-rich ecosystems would be missed, thus limiting more their contribution to achieve the EU Biodiversity Strategy for 2030 of one-third under strict protection objective.

Spatial conservation prioritization relies on the quality of species distribution data (Wiersma & Sleep, 2016). Studies typically opt to limit planning exercises to the best available species data set (e.g., Kukkala et al., 2016; D'Amen et al., 2013); however, drawing conclusions on data-rich taxa likely limits the application of systematic conservation planning at a continental level that consider species across all taxonomic groups (see Jung et al., 2020 for a comprehensive global analysis). Our analysis, while coarse, does explore several taxonomic groups (amphibians, reptiles, fish, mammals, invertebrates, plants), thus providing a national-level perspective on protecting many levels of biodiversity. For example, we found a limited value of applying spatial conservation prioritization algorithms at national level by taxonomic group (see Fig. 3, Fig. S2, Data S2). In our taxa specific scenarios, the top 33% priority areas overlap 295 Natura 2000 sites, of which 222 sites include priority areas for invertebrates, 92 sites for amphibians, 73 sites for plants, 63 sites for fish species, 58 sites for reptiles, and 42 sites for mammals. Achieving the EU Biodiversity Strategy targets will result in overshooting the one-third strictly protected target, and will require significant land availability and funding to implement, neither being a feasible and efficient prerequisite to conservation in Romania and the EU (Hermoso et al., 2019). Despite their limited value for the EU biodiversity targets, the taxonomic group-based scenarios can be used to identify key areas for a specific taxon and could be used to complement the more realistic, biogeographic regional-based scenarios. This type of prioritization can also be used to understand the data gaps across taxonomic groups. For example, in our case, the top 33% planning units for 53 invertebrate species include 222 Natura 2000 sites out of 371, while for 46 plant species, the prioritization algorithm will select planning units for 73 Natura 2000 sites. The large number of sites selected in the top 33% for invertebrates is a direct result of insufficient monitoring efforts for these species, and a lack of taxonomists (Brodie et al., 2019; Cardoso et al., 2011; D'Amen et al., 2013). Data gaps likely resulted in a lower than expected species per site, thus affecting the outcomes of our prioritization exercise.

The biogeographical region level prioritization resulted in a balanced distribution of top-priority planning units across the country. This is an expected result, as prioritization using biologically-significant administrative borders will reduce the lower coverage of areas with many range-restricted species (Kukkala et al., 2016). The biogeographic region level planning scenarios also resulted in a smaller number of sites with planning units in top 33%, with 104 Natura 2000 sites when planning region by region (19 sites belong to more than a region) compared to 222 sites under the national level scenario (see Fig. 4, Data S2). Most sites with top-priority grid cells occur in the Continental region (56 sites) and the Alpine region (38 sites), followed by the Steppic and terrestrial Black Sea (23 sites), and the Pannonian regions (8 sites). Biogeographic-focused planning scenarios also performs better in terms of species representation, with only 12 species not covered by top-priority planning units (see Data S3, Fig. 5). Only one species is missed by all biogeographic regions - European bison, *Bison bonasus* - which would require only one new Natura 2000 site for complete representation (e.g., Tarcu Mountains in SW Romania is on of them, and there are ongoing efforts to reintroduce bison in the Southern Carpathians, Fagaras Mountains).

Our prioritization is constrained by the limited availability of occurrence data for most of the Annex II Habitats Directive species. With few exceptions, such as reptiles, amphibians, mammals in the Dobrogea region, large carnivores (*Birsan et al., 2017*; *Cogălniceanu et al., 2013a*; *Cogălniceanu et al., 2013b*; *Cristescu et al., 2019*; *Miu et al., 2018*) species distribution data are available as extent of occurrence, rather than specific locations or modeled species distributions (*EIONET, 2020*). Also, other sources extensively used in prioritization research, such as GBIF (e.g., *Guo et al., 2020*), include low numbers of occurrence data for Romania. To overcome this shortcoming we used Natura 2000 Standard Data Form, the technical documentation of a Natura 2000 which includes species for which it was designated (*Lisón et al., 2017*), and the spatial resolution of data reported by the Romanian authorities for biogeographical assessments of the conservation status of species and habitats under Article 17 of the Habitats Directive (*EIONET, 2020*). While this is less than ideal for systematic conservation planning, it showcases the real-world decision-making process in Eastern European conservation. This is why we support the existing calls for obtaining robust species distribution data prior to establishing and planning strictly protected areas, especially for overlooked species such as invertebrates (*Cardoso et al., 2011*).

## CONCLUSIONS

The EU Biodiversity Strategy for 2030 requires an expansion of protected areas network in Europe, of which one third should be under strict protection as areas of very high biodiversity and climate value. The strategy outlines key principles for designation of strictly protected areas but without providing clear guidelines. To support policymakers in establishing criteria and guidance for meeting the target of one-third of protected areas under strict protection, we provide here a reproducible spatial prioritization case study using Romania's current terrestrial Natura 2000 network and coarse-scale terrestrial species occurrence. Our results indicate that designation of strictly protected areas using a systematic conservation planning approach at biogeographic region-level would result not only in a good representation of all species protected by EU legislation in a country but also in spatial evenness of selected sites. The species-specific approach used in our example may be easily expanded to include other dimensions of biodiversity, such as carbon-rich areas and old-growth forests, ecological corridors, etc. However, because the results are dependent not only on setting clear targets but also on data quality, we urge policymakers to invest in producing high-quality biodiversity data before proceeding to the designation of new areas of strict protection.

## ACKNOWLEDGEMENTS

We thank the two reviewers for comments and suggestions and Edward F. Rozyłowicz for proofreading and suggestions, which helped us to improve the quality of the manuscript.

## ADDITIONAL INFORMATION AND DECLARATIONS

### Funding

This work was supported by a grant of Executive Agency for Higher Education, Research, Development and Innovation Funding (PN-III-P4-ID-PCE-2016-0483). The funders had no role in study design, data collection and analysis, decision to publish, or preparation of the manuscript.

### Grant Disclosures

The following grant information was disclosed by the authors:

Executive Agency for Higher Education, Research, Development and Innovation Funding: PN-III-P4-ID-PCE-2016-0483.

### Competing Interests

The authors declare there are no competing interests.

### Author Contributions

- Iulia V. Miu and Laurentiu Rozyłowicz conceived and designed the experiments, performed the experiments, analyzed the data, prepared figures and/or tables, authored or reviewed drafts of the paper, and approved the final draft.
- Viorel D. Popescu and Paulina Anastasiu conceived and designed the experiments, authored or reviewed drafts of the paper, and approved the final draft.

### Data Availability

The following information was supplied regarding data availability:

The data underpinning the prioritization analyses are available at Zenodo: Miu, Iulia V, Rozyłowicz, Laurentiu, Popescu, Dan V, & Anastasiu, Paulina. (2020). Data from: Identification of top-priority areas to achieve EU Biodiversity Strategy for 2030 key commitments (Version 2) [Data set]. Zenodo. <http://doi.org/10.5281/zenodo.3999171>.

### Supplemental Information

Supplemental information for this article can be found online at <http://dx.doi.org/10.7717/peerj.10067#supplemental-information>.

## REFERENCES

- Apostolopoulou E, Pantis JD. 2009.** Conceptual gaps in the national strategy for the implementation of the European Natura 2000 conservation policy in Greece. *Biological Conservation* **142**:221–237 DOI [10.1016/j.biocon.2008.10.021](https://doi.org/10.1016/j.biocon.2008.10.021).
- Araújo MB, Alagador D, Cabeza M, Nogués-Bravo D, Thuiller W. 2011.** Climate change threatens European conservation areas. *Ecology Letters* **14**:484–492 DOI [10.1111/j.1461-0248.2011.01610.x](https://doi.org/10.1111/j.1461-0248.2011.01610.x).
- Arponen A, Heikkinen RK, Thomas CD, Moilanen A. 2005.** The value of biodiversity in reserve selection: representation, species weighting, and benefit functions. *Conservation Biology* **19**:2009–2014 DOI [10.1111/j.1523-1739.2005.00218.x](https://doi.org/10.1111/j.1523-1739.2005.00218.x).

- Bîrsan C, Iosif R, Szekely P, Cogălniceanu D. 2017.** Spatio-temporal Bias in the perceived distribution of the European Pond Turtle, *Emys orbicularis* (Linnaeus, 1758), in Romania. *Acta Zoologica Bulgarica* **10**:37–41.
- Brodie BS, Popescu VD, Iosif R, Ciocanea C, Manolache S, Vanau G, Gavriliadis AA, Serafim R, Rozyłowicz L. 2019.** Non-lethal monitoring of longicorn beetle communities using generic pheromone lures and occupancy models. *Ecological Indicators* **101**:330–340 DOI [10.1016/j.ecolind.2019.01.038](https://doi.org/10.1016/j.ecolind.2019.01.038).
- Cardoso P, Erwin TL, Borges PA, New TR. 2011.** The seven impediments in invertebrate conservation and how to overcome them. *Biological Conservation* **144**:2647–2655 DOI [10.1016/j.biocon.2011.07.024](https://doi.org/10.1016/j.biocon.2011.07.024).
- Cogălniceanu D, Rozyłowicz L, Székely P, Samoilă C, Stănescu F, Tudor M, Székely D, Iosif R. 2013a.** Diversity and distribution of reptiles in Romania. *ZooKeys* **341**:49–76 DOI [10.3897/zookeys.341.5502](https://doi.org/10.3897/zookeys.341.5502).
- Cogălniceanu D, Székely P, Samoila C, Iosif R, Tudor M, Plăiașu R, Stănescu F, Rozyłowicz L. 2013b.** Diversity and distribution of amphibians in Romania. *ZooKeys* **296**:35–57 DOI [10.3897/zookeys.296.4872](https://doi.org/10.3897/zookeys.296.4872).
- Council Directive 92/43/EEC. 2020.** Council Directive 92/43/EEC of 21 May 1992 on the conservation of natural habitats and of wild fauna and flora. Available at <https://eur-lex.europa.eu/legal-content/EN/TXT/?uri=celex:31992L0043> (accessed on 24 August 2020).
- Cristescu B, Domokos C, Teichman KJ, Nielsen SE. 2019.** Large carnivore habitat suitability modelling for Romania and associated predictions for protected areas. *PeerJ* **7**:e6549 DOI [10.7717/peerj.6549](https://doi.org/10.7717/peerj.6549).
- D’Amen M, Bombi P, Campanaro A, Zapponi L, Bologna MA, Mason F. 2013.** Protected areas and insect conservation: questioning the effectiveness of Natura 2000 network for saproxylic beetles in Italy. *Animal Conservation* **16**:370–378 DOI [10.1111/acv.12016](https://doi.org/10.1111/acv.12016).
- Di Minin E, Veach V, Lehtomäki J, Pouzols FP, Moilanen A. 2014.** A quick introduction to Zonation. Version 1 (for Zv4). University of Helsinki. Available at <https://github.com/cbig/zonation-core/releases/> (accessed on 24 August 2020).
- Dimitrakopoulos PG, Memtsas D, Troumbis AY. 2004.** Questioning the effectiveness of the Natura 2000 special areas of conservation strategy: the case of Crete. *Global Ecology and Biogeography* **13**:199–207 DOI [10.1111/j.1466-822X.2004.00086.x](https://doi.org/10.1111/j.1466-822X.2004.00086.x).
- Directive 2009/147/EC. 2020.** Directive 2009/147/EC of the European Parliament and of the Council of 30 November 2009 on the conservation of wild birds. Available at <https://eur-lex.europa.eu/legal-content/EN/TXT/?uri=CELEX:02009L0147-20190626> (accessed on 24 August 2020).
- European Commission. 2020.** Natura 2000 barometer. *Natura 2000 Nature and Biodiversity Newsletter* **47**:8–9.
- EIONET. 2020.** Central data repository. Natura 2000 network (Birds Directive and Habitats Directive). Natura 2000 updating 2019. Available at [https://cdr.eionet.europa.eu/ro/eu/n2000/envxdvb\\_a/](https://cdr.eionet.europa.eu/ro/eu/n2000/envxdvb_a/) (accessed on 5 March 2020).
- European Commission. 2020.** EU Biodiversity Strategy for 2030. Bringing nature back into our lives. Communication from the Commission to the European Parliament,



the Council, the European Economic and Social Committee and the Committee of the Regions. Available at <https://eur-lex.europa.eu/legal-content/EN/TXT/?uri=CELEX:52020DC0380> (accessed on 24 August 2020).

- Evans D. 2012. Building the European Union's Natura 2000 network. *Nature Conservation* 1:11–26 DOI 10.3897/natureconservation.1.1808.
- Geldmann J, Barnes M, Coad L, Craigie ID, Hockings M, Burgess ND. 2013. Effectiveness of terrestrial protected areas in reducing habitat loss and population declines. *Biological Conservation* 161:230–238 DOI 10.1016/j.biocon.2013.02.018.
- Gray CL, Hill SLL, Newbold T, Hudson LN, Börger L, Contu S, Hoskins AJ, Ferrier S, Purvis A, Scharlemann JPW. 2016. Local biodiversity is higher inside than outside terrestrial protected areas worldwide. *Nature Communications* 7:12306 DOI 10.1038/ncomms12306.
- Gruber B, Evans D, Henle K, Bauch B, Schmeller D, Dziock F, Henry P-Y, Lengyel S, Margules C, Dormann C. 2012. “Mind the gap”!—How well does Natura 2000 cover species of European interest? *Nature Conservation* 3:45–62 DOI 10.3897/natureconservation.3.3732.
- Guo W-Y, Serra-Diaz JM, Schrodt F, Eiserhardt WL, Maitner BS, Merow C, Violle C, Anand M, Belluau M, Bruun HH, Byun C, Catford JA, Cerabolini BEL, Chacón-Madrigal E, Ciccarelli D, Cornelissen JHC, Dang-Le AT, Frutos Ade, Dias AS, Giroldo AB, Guo K, Gutiérrez AG, Hattingh W, He T, Hietz P, Hough-Snee N, Jansen S, Kattge J, Klein T, Komac B, Kraft N, Kramer K, Lavorel S, Lusk CH, Martin AR, Mencuccini M, Michaletz ST, Minden V, Mori AS, Niinemets Ü, Onoda Y, Onstein RE, Peñuelas J, Pillar VD, Pisek J, Robroek BJM, Schamp B, Slot M, Sosinski Ê, Soudzilovskaia NA, Thiffault N, Van Bodegom P, Van der Plas F, Wright IJ, Xu W-B, Zheng J, Enquist BJ, Svenning J-C. 2020. Half of the world's tree biodiversity is unprotected and is increasingly threatened by human activities. *bioRxiv*. DOI 10.1101/2020.04.21.052464.
- Hermoso V, Clavero M, Villero D, Brotons L. 2017. EU's conservation efforts need more strategic investment to meet continental commitments. *Conservation Letters* 10:231–237 DOI 10.1111/cons.12248.
- Hermoso V, Morán-Ordóñez A, Canessa S, Brotons L. 2019. Realising the potential of Natura 2000 to achieve EU conservation goals as 2020 approaches. *Scientific Reports* 9:16087 DOI 10.1038/s41598-019-52625-4.
- Heywood VH. 2019. Conserving plants within and beyond protected areas—still problematic and future uncertain. *Plant Diversity* 41:36–49 DOI 10.1016/j.pld.2018.10.001.
- Ioja CI, Pătroescu M, Rozyłowicz L, Popescu VD, Vergheș M, Zotta M, Felciuc M. 2010. The efficacy of Romania's protected areas network in conserving biodiversity. *Biological Conservation* 143:2468–2476 DOI 10.1016/j.biocon.2010.06.013.
- Jung M, Arnell A, De Lamo X, García-Rangel S, Lewis M, Mark J, Merow C, Miles L, Ondo I, Pironon S, Ravilious C, Rivers M, Schepashenko D, Tallwin O, Van Soesbergen A, Govaerts R, Boyle BL, Enquist BJ, Feng X, Gallagher RV, Maitner B, Meiri S, Mulligan M, Ofer G, Hanson JO, Jetz W, Di Marco M, McGowan J, Rinnan DS, Sachs JD, Lesiv M, Adams V, Andrew SC, Burger JR, Hannah L, Marquet PA, McCarthy JK, Morueta-Holme N, Newman EA, Park DS, Roehrdanz PR, Svenning

- JC, Violle C, Wieringa JJ, Wynne G, Fritz S, Strassburg BBN, Obersteiner M, Kapos V, Burgess N. 2020. Areas of global importance for terrestrial biodiversity, carbon, and water. *bioRxiv*. DOI [10.1101/2020.04.16.021444](https://doi.org/10.1101/2020.04.16.021444).
- Kenig-Witkowska MM. 2017. Natura 2000—the European Union mechanism for nature conservation: some legal issues. *Journal of Comparative Urban Law and Policy* 2:198–214.
- Kukkala AS, Arponen A, Maiorano L, Moilanen A, Thuiller W, Toivonen T, Zupan L, Brotons L, Cabeza M. 2016. Matches and mismatches between national and EU-wide priorities: examining the Natura 2000 network in vertebrate species conservation. *Biological Conservation* 198:193–201 DOI [10.1016/j.biocon.2016.04.016](https://doi.org/10.1016/j.biocon.2016.04.016).
- Lehtomäki J, Moilanen A. 2013. Methods and workflow for spatial conservation prioritization using Zonation. *Environmental Modelling and Software* 47:128–137 DOI [10.1016/j.envsoft.2013.05.001](https://doi.org/10.1016/j.envsoft.2013.05.001).
- Lisón F, Altamirano A, Field R, Jones G. 2017. Conservation on the blink: deficient technical reports threaten conservation in the Natura 2000 network. *Biological Conservation* 209:11–16 DOI [10.1016/j.biocon.2017.02.003](https://doi.org/10.1016/j.biocon.2017.02.003).
- Lisón F, Palazón JA, Calvo JF. 2013. Effectiveness of the Natura 2000 Network for the conservation of cave-dwelling bats in a Mediterranean region. *Animal Conservation* 16:528–537 DOI [10.1111/acv.12025](https://doi.org/10.1111/acv.12025).
- Manolache S, Ciocanea CM, Rozyłowicz L, Nita A. 2017. Natura 2000 in Romania—a decade of governance challenges. *European Journal of Geography* 8:24–34.
- Mânzu C, Gherghel I, Zamfirescu Ş, Zamfirescu O, Roşca I, Strugariu A. 2013. Current and future potential distribution of glacial relict *Ligularia sibirica* (Asteraceae) in Romania and temporal contribution of Natura 2000 to protect the species in light of global change. *Carpathian Journal of Earth and Environmental Sciences* 8:77–87.
- Margules CR, Pressey RL. 2000. Systematic conservation planning. *Nature* 405:243–253 DOI [10.1038/35012251](https://doi.org/10.1038/35012251).
- Miu IV, Chisamera GB, Popescu VD, Iosif R, Nita A, Manolache S, Gavril VD, Cobzaru I, Rozyłowicz L. 2018. Conservation priorities for terrestrial mammals in Dobrogea Region, Romania. *ZooKeys* 158:133–158 DOI [10.3897/zookeys.792.25314](https://doi.org/10.3897/zookeys.792.25314).
- Moilanen A. 2007. Landscape Zonation, benefit functions and target-based planning: unifying reserve selection strategies. *Biological Conservation* 134:571–579 DOI [10.1016/j.biocon.2006.09.008](https://doi.org/10.1016/j.biocon.2006.09.008).
- Moilanen A, Franco AMA, Early RI, Fox R, Wintle B, Thomas CD. 2005. Prioritizing multiple-use landscapes for conservation: methods for large multi-species planning problems. 57:1885–1891 DOI [10.1098/rspb.2005.3164](https://doi.org/10.1098/rspb.2005.3164).
- Moilanen A, Leathwick JR, Quinn JM. 2011. Spatial prioritization of conservation management. *Conservation Letters* 4:383–393 DOI [10.1111/j.1755-263X.2011.00190.x](https://doi.org/10.1111/j.1755-263X.2011.00190.x).
- Moilanen A, Pouzols FM, Meller L, Veach V, Arponen A, Leppänen J, Kujala H. 2014. Spatial conservation planning methods and software ZONATION. *User Manual Available at <https://github.com/cbig/zonation-core/releases/>* (accessed on 5 March 2020).
- Müller A, Schneider UA, Jantke K. 2018. Is large good enough? Evaluating and improving representation of ecoregions and habitat types in the European Union's

- protected area network Natura 2000. *Biological Conservation* **227**:292–300  
[DOI 10.1016/j.biocon.2018.09.024](https://doi.org/10.1016/j.biocon.2018.09.024).
- Müller A, Schneider UA, Jantke K. 2020.** Evaluating and expanding the European Union's protected-area network toward potential post-2020 coverage targets. *Conservation Biology* **34**:654–665 [DOI 10.1111/cobi.13479](https://doi.org/10.1111/cobi.13479).
- Nita A, Rozyłowicz L, Manolache S, Ciocănea MC, Miu VI, Popescu DV. 2016.** Collaboration networks in applied conservation projects across Europe. *PLOS ONE* **11**:e0164503:116 [DOI 10.1371/journal.pone.0164503](https://doi.org/10.1371/journal.pone.0164503).
- Orlikowska EH, Roberge JM, Blicharska M, Mikusiński G. 2016.** Gaps in ecological research on the world's largest internationally coordinated network of protected areas: a review of Natura 2000. *Biological Conservation* **200**:216–227  
[DOI 10.1016/j.biocon.2016.06.015](https://doi.org/10.1016/j.biocon.2016.06.015).
- Popescu VD, Rozyłowicz L, Cogălniceanu D, Niculae IM, Cucu AL. 2013.** Moving into protected areas? Setting conservation priorities for Romanian reptiles and amphibians at risk from climate change. *PLOS ONE* **8**:e79330  
[DOI 10.1371/journal.pone.0079330](https://doi.org/10.1371/journal.pone.0079330).
- Possingham HP, Wilson KA, Andelman SJ, Vynne CH. 2006.** Protected areas: goals, limitations, and design. In: Groom MJ Meffe GK, Carroll RC, ed. *Principles of conservation biology*. Boston: Sinauer Associates, 509–533.
- Pressey RL, Cabeza M, Watts ME, Cowling RM, Wilson KA. 2007.** Conservation planning in a changing world. *Trends in Ecology & Evolution* **22**:583–592  
[DOI 10.1016/j.tree.2007.10.001](https://doi.org/10.1016/j.tree.2007.10.001).
- Rey V, Ianos I, Groza O, Patroescu M. 2007.** *Atlas de la Roumanie*. Nouvelle edition. Montpellier: Reclus.
- Rodrigues ASL, Andelman SJ, Bakarr MI, Boitani L, Brooks TM, Cowling RM, Fishpool LDC, Da Fonseca GAB, Gaston KJ, Hoffmann M, Long JS, Marquet PA, Pilgrim JD, Pressey RL, Schipper J, Sechrest W, Stuart SN, Underhill LG, Waller RW, Watts MEJ, Yan X. 2004.** Effectiveness of the global protected area network in representing species diversity. *Nature* **428**:640–643 [DOI 10.1038/nature02422](https://doi.org/10.1038/nature02422).
- Rozyłowicz L, Nita A, Manolache S, Popescu VD, Hartel T. 2019.** Navigating protected areas networks for improving diffusion of conservation practices. *Journal of Environmental Management* **230**:413–421 [DOI 10.1016/j.jenvman.2018.09.088](https://doi.org/10.1016/j.jenvman.2018.09.088).
- UNEP. 2011.** *Strategic Plan for Biodiversity 2011–2020: Further Information Related to the Technical Rationale for the Aichi Biodiversity Targets, Including Potential Indicators and Milestones*. New York: UNEP, 2011–2020.
- Veen P, Fanta J, Raev I, Biriş I-A, De Smidt J, Maes B. 2010.** Virgin forests in Romania and Bulgaria: results of two national inventory projects and their implications for protection. *Biodiversity and Conservation* **19**:1805–1819  
[DOI 10.1007/s10531-010-9804-2](https://doi.org/10.1007/s10531-010-9804-2).
- Votsi NEP, Zomeni MS, Pantis JD. 2016.** Evaluating the effectiveness of Natura 2000 network for wolf conservation: a case-study in Greece. *Environmental Management* **57**:257–270 [DOI 10.1007/s00267-015-0621-y](https://doi.org/10.1007/s00267-015-0621-y).

**Wiersma YF, Sleep DJH. 2016.** A review of applications of the six-step method of systematic conservation planning. *The Forestry Chronicle* **92**:322–335  
[DOI 10.5558/tfc2016-059](https://doi.org/10.5558/tfc2016-059).