

# Seasonal and predator-prey effects on circadian activity of free-ranging mammals revealed by camera traps

Anthony Caravaggi<sup>1,2</sup>, Maria Gatta<sup>3</sup>, Marie-Claire Valley<sup>1,4</sup>, Kayleigh Hogg<sup>1</sup>, Marianne Freeman<sup>1</sup>, Erfan Fadaei<sup>1,5</sup>, Jaimie T.A. Dick<sup>1,5</sup>, W. Ian Montgomery<sup>1,5</sup>, Neil Reid<sup>1,5</sup> and David G. Tosh<sup>1,6</sup>

<sup>1</sup> School of Biological Sciences, Queen's University Belfast, UK

<sup>2</sup> School of Biological Earth and Environmental Sciences, University College Cork, Cork, Ireland

<sup>3</sup> School of Animal, Plant and Environmental Sciences, University of Witwatersrand, South Africa

<sup>4</sup> Northern Ireland Environment Agency, UK

<sup>5</sup> Institute of Global Food Security (IGFS), Queen's University Belfast, UK

<sup>6</sup> National Museums Northern Ireland, UK

## ABSTRACT

Endogenous circadian and seasonal activity patterns are adapted to facilitate effective utilisation of environmental resources. Activity patterns are shaped by physiological constraints, evolutionary history, circadian and seasonal changes and may be influenced by other factors, including ecological competition and interspecific interactions. Remote-sensing camera traps allow the collection of species presence data throughout the 24 h period and for almost indefinite lengths of time. Here, we collate data from 10 separate camera trap surveys in order to describe circadian and seasonal activity patterns of 10 mammal species, and, in particular, to evaluate interspecific (dis)associations of five predator-prey pairs. We recorded 8,761 independent detections throughout Northern Ireland. Badgers, foxes, pine martens and wood mice were nocturnal; European and Irish hares and European rabbits were crepuscular; fallow deer and grey and red squirrels were diurnal. All species exhibited significant seasonal variation in activity relative to the timing of sunrise/sunset. Foxes in particular were more crepuscular from spring to autumn and hares more diurnal. Lagged regression analyses of predator-prey activity patterns between foxes and prey (hares, rabbits and wood mice), and pine marten and prey (squirrel and wood mice) revealed significant annual and seasonal cross-correlations. We found synchronised activity patterns between foxes and hares, rabbits and wood mice and pine marten and wood mice, and asynchrony between squirrels and pine martens. Here, we provide fundamental ecological data on endemic, invasive, pest and commercially valuable species in Ireland, as well as those of conservation importance and those that could harbour diseases of economic and/or zoonotic relevance. Our data will be valuable in informing the development of appropriate species-specific methodologies and processes and associated policies.

Submitted 21 March 2018  
Accepted 25 September 2018  
Published 21 November 2018

Corresponding author  
Anthony Caravaggi,  
ar.caravaggi@gmail.com

Academic editor  
Valery Forbes

Additional Information and  
Declarations can be found on  
page 19

DOI 10.7717/peerj.5827

© Copyright  
2018 Caravaggi et al.

Distributed under  
Creative Commons CC-BY 4.0

**OPEN ACCESS**

**Subjects** Animal Behavior, Ecology, Zoology, Population Biology

**Keywords** Temporal co-occurrence, Mammal species, Circadian activity, Camera traps, Citizen science, Seasonality, Wildlife

## INTRODUCTION

Animal activity patterns are influenced by a variety of environmental pressures, including food availability (*Larivière, Huot & Samson, 1994; Pereira, 2010*), foraging efficiency (*Lode, 1995; Prugh & Golden, 2014*), predator/prey activity (*Fenn & Macdonald, 1995; Middleton et al., 2013*), human disturbance (*Van Doormaal et al., 2015; Wang, Allen & Wilmers, 2015*), mate availability and activity (*Thompson et al., 1989; Halle & Stenseth, 2000*), and ecological competition (*Rychlik, 2005; Monterroso, Alves & Ferreras, 2014*). Circadian (i.e. recurring every 24 h) and seasonal patterns of activity are adaptive behavioural traits which allow species to effectively exploit their environment and the resources contained therein (*Hetem et al., 2012; Phillips et al., 2013*). Mammals exhibit a great diversity and flexibility in their activity patterns. A recent study of 4,477 mammal species classified 69% as nocturnal (i.e. night-active), 20% diurnal (i.e. day-active), 8.5% cathemeral (i.e. active throughout the 24 h cycle) and 2.5% crepuscular (i.e. dawn- and/or dusk-active, e.g. lesser mouse deer; *Bennie et al., 2014*).

Activity patterns evolved in response to cyclical changes in the environment that encouraged organisms to respond on a physiological and behavioural basis (*Daan, 1981; Kronfeld-Schor & Dayan, 2003; Roll, Dayan & Kronfeld-Schor, 2006; Bennie et al., 2014*). Activity patterns are frequently related to daily oscillation in illumination (e.g. changes in sunrise/sunset; *Halle & Stenseth, 2000*) and, hence, the time(s) of the day during which species are active may vary according to season (i.e. spring, summer, autumn and winter). Indeed, it has been suggested that photic cues are the dominant factor underlying behavioural rhythmicity and that a species' potential to adapt to non-photoc cues (e.g. ecological competitors, predators) may be constrained such that responses are manifest within the normal active period rather than as a shift to a different rhythm (*Kronfeld-Schor & Dayan, 2003*). The capacity for adaptive behavioural plasticity, while limited in some species (*Kronfeld-Schor & Dayan, 2003*), is demonstrated in others by observations of intraspecific variation of activity patterns (*Ashby, 1972; Hertel et al., 2016*) that can result in temporal niche switching (*Fenn & Macdonald, 1995; Ensing et al., 2014*). For example, *Ensing et al. (2014)* found that red deer (*Cervus elaphus*) were mostly diurnal in Canada, while conspecifics in the Netherlands were mostly nocturnal. The difference in activity patterns was attributed to higher levels of human disturbance and a lack of natural predators in the Netherlands.

The island of Ireland has a depauperate terrestrial mammalian community due to its prolonged isolation since the last Glacial Maximum (*Montgomery et al., 2014*). The behavioural ecologies of mammals in Ireland are almost entirely unknown and assumptions of behavioural equivalence between Ireland and locations elsewhere in the species' range may not apply given differences in land use, human activity and ecosystem composition. Quantifying fundamental ecological parameters such as activity patterns has direct relevance to the management of endemic (e.g. Irish hare, *Lepus timidus hibernicus*, Bell 1837; *Reid & Montgomery, 2007*), invasive (e.g. European brown hares, *L. europaeus*, Pallas 1778; *Caravaggi, Montgomery & Reid, 2015*), pest (e.g. red foxes, *Vulpes vulpes*, Linnaeus 1758; *Baker & Harris, 2006*) and commercially valuable (e.g. deer;

*Carden et al., 2011*) species, as well as those that could harbour diseases of economic (e.g. badgers, *Meles meles*, Linnaeus 1758; *Griffin et al., 2005*) and/or zoonotic relevance. The relative dearth of mammalian herbivores and their predators in Ireland also makes the island an ideal study system in which to investigate predator-prey relationships. However, recording and quantifying daily activity patterns of wild, free-ranging mammals presents significant challenges, including overcoming the observer effect whereby the presence of an observer influences the behaviour of the subject (*Stewart, Ellwood & Macdonald, 1997*), and collecting sufficient data to address scientific and conservation questions (*sensu Cagnacci et al., 2010*). A number of methodological techniques have been used to overcome such challenges such as radio-tracking, GPS collars and live trapping, each with varying degrees of success (*Bridges & Noss, 2011*). Radio-tracking has inherent limitations, including periodic (i.e. non-constant) sampling (*Lovari, Valier & Lucchi, 1994*) and the application of considerable survey effort (*Palomares & Delibes, 1991; Reid, McDonald & Montgomery, 2010*). Furthermore, they may result in small sample sizes (*Bridges & Noss, 2011*), capture a limited proportion of the population (*Sadlier et al., 2004*), and may be subject to signal-based error and/or omission (*Cagnacci et al., 2010*) or alter the behaviour of tagged animals (*Wilson et al., 2011*). GPS collars have similar constraints to radio-tracking, particularly with regards to sample sizes and potential signal issues. Moreover, inferences made from GPS collar data can lead to misleading results and much depends on the frequency with which location fixes are obtained (*Merrill & Mech, 2003*). Live trapping has been used to investigate activity patterns of small mammals, where each successful capture (i.e. the presence of an animal in a trap) is taken as indicating activity (e.g. *Elton et al., 1931; Bradley, 1967; Hoogenboom et al., 1984*). However, live trapping requires considerable time and effort, is relatively inefficient, may have implications with regards to animal welfare (*Torre, Guixe & Sort, 2010*), and is subject to species- and trap-specific variations in capture probability (*Leso & Kropil, 2010*).

Remote-sensing camera traps (i.e. remotely activated cameras that are activated via motion or infra-red sensors or light beams; *Swann et al., 2004*) are increasingly popular in conservation and ecological studies (*Kucera & Barrett, 2011*) as they are non-invasive and are subject to continuing technological improvements and decreasing costs (*Tobler et al., 2008a*). They have been used in studies investigating population densities (*Trolle & Kéry, 2003; Karanth et al., 2006; Caravaggi et al., 2016*), behaviour (*Maffei et al., 2005*), ecosystem biodiversity (*Silveira, Jácomo & Diniz-Filho, 2003; Tobler et al., 2008b*), and site occupancy of rare or cryptic species (*Linkie et al., 2007*). Camera traps afford researchers the means to conduct long-term surveys while minimising in situ survey effort and disturbance of the focal species (*Kays & Slauson, 2008*). As such, data derived from camera trap surveys of common species and/or conducted at high camera densities are well suited to investigations of wildlife activity patterns (*Di Cerbo & Biancardi, 2013; Carbajal-Borges, Godínez-Gómez & Mendoza, 2014; Allen, Peterson & Kropfel, 2018*). The size and scope of camera trap surveys are limited only by the cost of equipment and personnel to conduct fieldwork and review and analyse data, while the length of time cameras can be left in situ is restricted by available memory, battery life and the possibility of mechanical failure. There may be a trade-off between the proximity and angle of

cameras with regards to targets, and the likelihood of detecting and identifying species of varying size (Hofmeester, Rowcliffe & Jansen, 2017). Downward-facing cameras, for example, are more efficient at detecting small mammals (De Bondi et al., 2010). However, species identification is difficult where similar species occur in sympatry (Claridge, Paull & Barry, 2010; Meek, Vernes & Falzon, 2013; Oliveira-Santos et al., 2010). This is often particularly true of small mammals (Claridge, Paull & Barry, 2010; Meek & Vernes, 2016). However, Ireland is home to six species of rodent and two species of shrew, few of which occur in sympatry and all of which are uniquely identifiable.

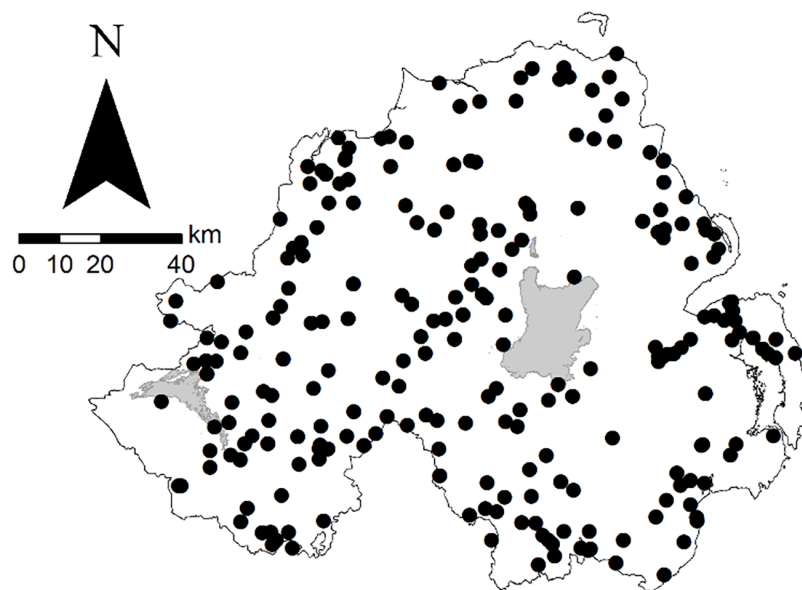
Here, we describe the first study into temporal activity patterns of 10 mammal species found in Ireland, from 14 g (wood mouse, *Apodemus sylvaticus*, Linnaeus 1758) to 60 kg (fallow deer, *Dama dama*, Linnaeus 1758), captured via camera traps. In addition, we investigate interspecific relationships, specifically whether predator-prey activity patterns demonstrate (a)synchrony, demonstrating temporal (dis)association between ecologically-linked species. We hypothesised that predator-prey pairs would exhibit non-random, interrelated distribution of activity throughout the diel cycle. This distribution would either display a considerable overlap between predators and prey (i.e. predators are attracted to prey), or asynchrony between the species (i.e. temporal avoidance of predators by prey).

## MATERIALS AND METHODS

We collated data from 10 camera trap studies conducted in Northern Ireland, where land use is predominantly agricultural (75%) and forest cover, mixed and deciduous woodland and coniferous forest plantations, is 8% of land area (Department of Agriculture, Environment and Rural Affairs, 2018; Forestry Commission, 2018). The focal species of the 10 studies were fallow deer (*Dama dama*, Linnaeus 1758;  $n = 6$ ), Eurasian red squirrel (*Sciurus vulgaris*, Linnaeus 1758) and Eastern North American grey squirrel (*S. carolinensis*, Gmelin 1788;  $n = 2$ ) and European brown hare and Irish mountain hare ( $n = 2$ ). However, as is common for camera trap studies, non-target species were also detected. Therefore, in addition to the five focal species, we present additional information on a further five species: (i) European badger; (ii) European rabbit (*Oryctolagus cuniculus*, Linnaeus 1758); (iii) wood mouse; (iv) pine marten (*Martes martes*, Linnaeus 1758); and (v) red fox (hereafter 'fox'). The data presented here resulted from a total of 1,164 camera deployments at 431 locations (defined herein as broad study areas, rather than individual camera placements; Fig. 1). Deer surveys were conducted from June 2013 to November 2016, squirrel surveys from January to March 2014 and January to May 2015 and hare surveys from April 2013 to August 2015, non-inclusive. Constituent surveys were independent thus methodologies were not standardised. There was no evidence of intrageneric variation in the activity patterns of hare (Fig. S1) and squirrel (Fig. S2) species, and, hence, both were grouped (i.e. 'hares' and 'squirrels') for the purposes of the current study.

### Species surveys

We included data from six independent deer studies (D1–6) in our analyses. D1 was conducted over 15 1 km<sup>2</sup> squares with an average of 10 cameras per km<sup>2</sup> and five



**Figure 1** Locations of sites used in camera trap wildlife studies in Northern Ireland from 2013 to 2016. For species-specific maps, see Fig. S3. [Full-size](#) DOI: 10.7717/peerj.5827/fig-1

**Table 1** Number of remote-sensing camera traps deployed (i.e. ‘camera locations’) by mammal studies carried out in Northern Ireland between 2013 and 2016.

Focal species	Year	Total survey area (km <sup>2</sup> )	Active cameras	Deployments	Total camera locations
Deer (D1)	2013–2014	20.00	38	23	255
Deer (D2)	2015	0.05	10	4	40
Deer (D3)	2015	0.02	10	2	20
Deer (D4)	2015	0.04	10	2	20
Deer (D5)	2015	0.05	17	1	17
Deer (D6)	2015	0.02	21	1	21
Hares	2013–2014	17.00	20	17	340
Hares	2015	6.00	12	6	72
Squirrels (S1)	2014	n/a	16	63	63
Squirrels (S2)	2015	n/a	65	314	314

**Note:**

Contributory studies were independent, thus methodologies were not standardised; study locations (size, shape) and camera array densities varied considerably. For more information, see the main Methods section. Squirrel surveys were focussed on presence and did not attempt to quantify the effective survey area of all camera placements.

additional one km<sup>2</sup> squares set at a higher density of 20 camera traps per km<sup>2</sup>.

In total 38 camera trap units were randomly deployed over 255 individual camera trap placements (Table 1) using a combination of Bushnell Trophy Cam (119467), Bushnell Trophy Cam HD (119477), Reconyx (HC600) and Scoutguard Camera (SG560P-8M)—the number of each model used differed between sites. Camera traps were set at a height of 30 cm, perpendicular to the ground. Cameras were set to capture the maximum photographs per trigger (3–10 photographs depending on camera model) and no delay between triggers. Cameras were left for 14 days before being collected

and relocated. D2–D4 surveyed smaller areas of 0.02, 0.04 and 0.05 km<sup>2</sup> using 10 Bushnell Trophy Cam HD (119677) at each site. Each camera was set at a height of 40 cm from the ground and set to capture bursts of three still pictures and a 60 s video per trigger, with a delay of 1 s between triggers. Cameras were left in situ for 7 days. D5–D6 were focussed on areas of 0.05 and 0.02 km<sup>2</sup>, respectively and used Bushnell Trophy Cam HDs (119477, 119577, 119676, 119677). Cameras were set at a height of 40 cm and set to capture either three still pictures or a 30 s video, depending on the camera model, with a 1 s delay between triggers. Cameras were deployed for 7 days.

Hare surveys were conducted over two independent studies (Table 1) across a total of 23 1 km<sup>2</sup> squares. Each square contained 20 randomly placed Bushnell Trophy Cam HD (119477) camera traps that were positioned on vertical aspects of linear features (i.e. trees in hedgerows, fence posts), to a total of 412 camera locations (Table 1). Cameras were set at a height of 30 cm from the ground, at a 45–90° angle away from the linear feature, with a 10–15° downward tilt. Cameras were set to record video for a period of 60 s with a 60 s delay between triggers. Cameras were deployed for 7 days. The use of video footage allowed the detection of closely-associated conspecifics (see *Caravaggi et al., 2016* for more on this study).

Data from two arboreal squirrel surveys are presented in this study. The first survey (S1) was undertaken in 2014, within 63 forested areas >5 ha in size within Co. Fermanagh. A total of 16 Bushnell Trophy Cameras (119438) were deployed by seven volunteers ('citizen scientists') and one scientist during a 3-month period (Table 1). Cameras were attached to trees at a height of three to four m and positioned up to four m distant from and opposite a wooden squirrel feeder (Northumbrian Wildlife Trust design) baited with peanuts and sunflower seeds. Cameras were left in situ for a minimum of seven and maximum of 24 days (median = 8). The second survey (S2) was conducted in 314 forested areas >5 ha in size across Northern Ireland by 70 citizen scientists and one scientist during a 5-month period in 2015. A total of 65 Bushnell Trophy Cameras (16 × 119438; 12 × 119577; 37 × 119676) were deployed during this time for a minimum of six and maximum of 33 days (median = 7). Cameras were deployed at head height (1.5–2 m) on a tree opposite either a wooden (as in 2014) or metal squirrel feeder (CJ Wildlife Product code 12335). In both years, cameras were set to take three photos per burst with an interval of 1–20 s between triggers. In these surveys all citizen scientists were trained in the use of camera traps by the scientist (DT) overseeing the research.

In deer and hare surveys, cameras were placed according to  $n_i$  randomly generated points within each focal area and a clear field of view was ensured by clearing prominent vegetation where appropriate. The density of deployed camera trap arrays means that it was possible that the same individual would be captured more than once during the sampling period. Similarly, cameras were pseudo-randomly placed during squirrel surveys according to suitably paired trees (one for the camera, one for the feeder) of which there were an abundance in all locations. Recaptures were highly likely given the use of baited stations. Surveys with >1 camera trap model did not systematically deploy models predictably within and across arrays. In all surveys, cameras were equipped with eight GB

HDSD cards, secured with Python security cables, motion detectors were set to medium sensitivity and each capture was stamped with the date and time.

### Activity analysis

We assumed that images were independent when separated by 1 h (Cusack *et al.*, 2015) and that temporal detection frequency was a true reflection of circadian activity patterns of the focal species. Animals can only be detected on camera traps when active, specifically, when in motion. The number of detections per hour therefore reflects the level of activity across the circadian period. Prior to analysis, data for individual species were grouped into 1 h time intervals, beginning at the hour mark (e.g. 11:00–11:59). In cases where a group of individuals of the same species (e.g. fallow deer) was detected in one image, a single event was recorded. Detection frequencies were normalised to ease plot interpretation using the formula  $z_i = \frac{x_i - x_{\min}}{x_{\max} - x_{\min}}$ , where  $z_i$  = normalised detection frequency at the  $i$ th interval, and  $x = (x_1 \dots, x_n)$ .

Variations in day length throughout the year has direct consequences for wildlife (Nouvellet *et al.*, 2012). For example, an ostensibly nocturnal species may be more likely to remain active into daylight hours during the summer months due to shortening nights in order to meet its energetic requirements (Schai-Braun, Rödel & Hackländer, 2012). To investigate intra-annual variation in activity relative to sunrise/sunset (i.e. whether nocturnal/diurnal activity differed between seasons; solar cycle historical data obtained from the *HM Nautical Almanac Office*, 2016), data were grouped according to season: spring (March–May); summer (June–August); autumn (September–November); and winter (December–February). Detections between 00:00 and 11:59 were offset relative to sunrise; detections between 12:00 and 23:59 were offset relative to sunset. All daytime offsets were converted to positive integers, night-time to negative. For example, a detection timed at 22:10, with sunset at 20:00, would have an offset value of –2 h and 10 min, indicating nocturnal activity. We investigated intraspecific differences in seasonal offsets via one-way Analysis of Variance with post hoc Tukey tests where the dependent variable was the sunrise/sunset offset, and season was the explanatory variable.

We defined the diurnal period as the time between 1 h after sunrise and 1 h before sunset, and the nocturnal period as the time between 1 h before sunrise and 1 h after sunset. We defined the crepuscular periods, dawn and dusk, as the hour before and the hour after sunrise and sunset, respectively, (after Theuerkauf *et al.*, 2003; Ross *et al.*, 2013). Species activity patterns were classified according to the diel period with the most activity.

We used overlap metrics and lagged regression cross-correlation functions (CCFs) to examine annual and seasonal relationships between predator-prey pairs (i.e. autocorrelation), specifically: fox and hare; fox and rabbit; fox and wood mouse; pine marten and squirrel; and pine marten and wood mouse. These relationships were explored due to dietary studies indicating the potential for predator-prey dynamics within the 24 h period. Lagomorphs are primary prey items of the red fox in Ireland (Fairley, 1970). In Britain the field vole (*Microtus agrestis*, Linnaeus, 1761) is a secondary prey item for the red fox (Webbon *et al.*, 2006) and primary item for the pine marten (Caryl *et al.*, 2012) but this species does not occur in NI where the wood mouse is the most

abundant small mammal species (J. P. Twining, 2018, unpublished data). Data used to examine predator prey relationships were restricted to locations where both species in each pair were detected. Sample CCFs facilitate the identification of lags in the  $x$  variable which may be predictive of  $y$ . Positive lag ( $h+$ ) is the result of a correlation between  $x_{a+i}$  and  $y_a$ , where  $a$  = time. Conversely, negative lag ( $h-$ ) is the result of a correlation between  $x_{a-i}$  and  $y_a$ . Significant correlations describe a non-random association between species detections at interval(s)  $h_i$ . Lagged regressions were calculated using the CCF function in the core library of R (*R Core Team, 2016*). The CCF function, however, does not return quantified measures of significance. The significance of the correlation coefficient,  $r$ , therefore, was established by calculating the  $t$  value, where  $t = r\sqrt{\frac{n-2}{1-r^2}}$  and where the critical  $t$  value ( $p = 0.05$ , 22 degrees of freedom, one-tailed) = 1.72. We calculated the degree of overlap between each species pair on an annual basis and for each season using the *overlap* package (*Meredith & Ridout, 2017*). Data were resampled 1,000 times per pair, per category, to generate 95% Confidence Intervals (CIs). We defined overlap <0.5 as low overlap, 0.5–0.75 as moderate overlap and > 0.75 as high overlap (*Monterroso, Alves & Ferreras, 2014*). All statistical analyses were carried out in R 3.4.3 (*R Core Team, 2017*; see *Caravaggi et al., 2018*, for data and code).

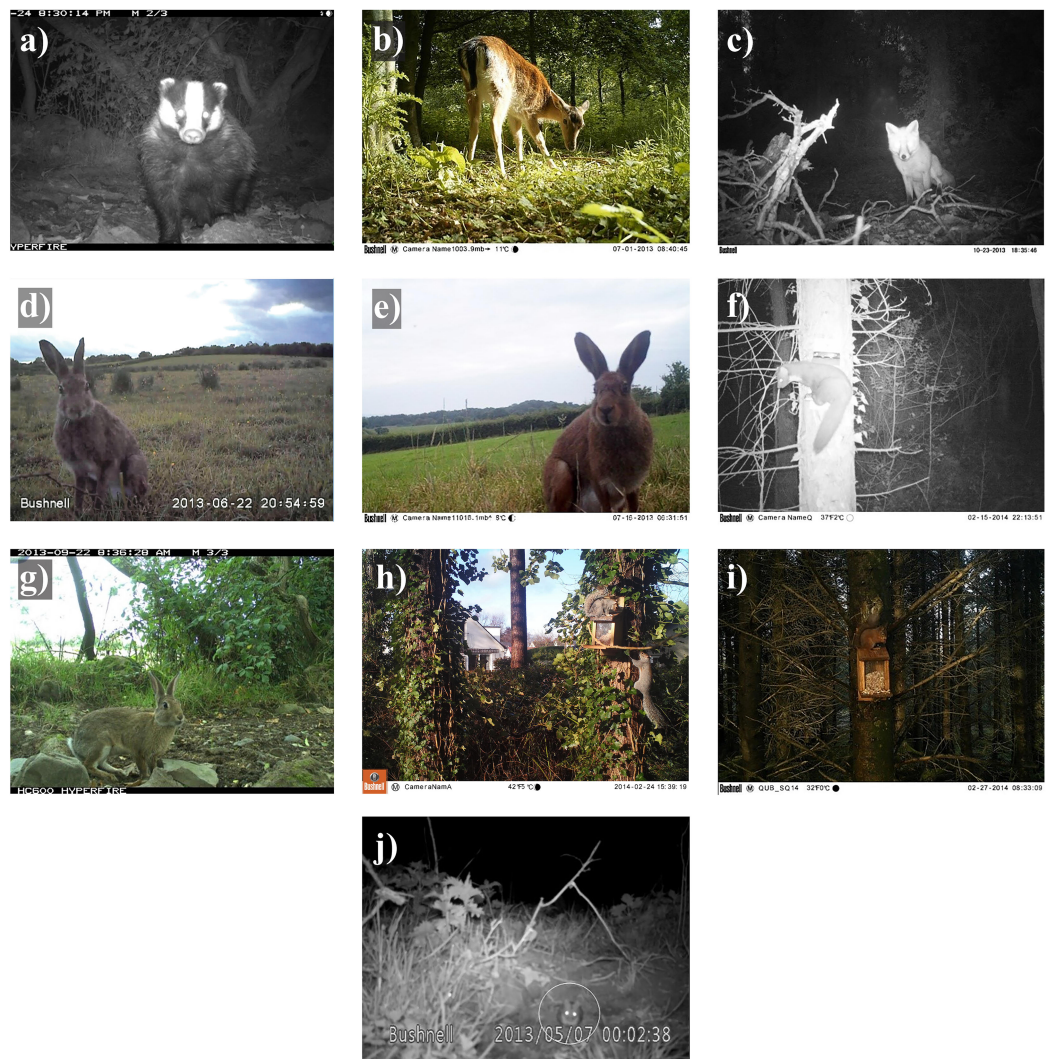
## RESULTS

A total of 8,761 independent detections of the 10 species were recorded across 324 camera days (i.e. 24-hour periods across all deployed cameras). Squirrel sightings ( $n = 2,870$ ; [Fig. 2G](#)) comprised 33% of all records, rabbits 13% ( $n = 1,175$ ; [Fig. 2F](#)), pine martens 11% ( $n = 966$ ; [Fig. 2E](#)), badgers 11% ( $n = 947$ ; [Fig. 2A](#)), wood mice 9% ( $n = 816$ ; [Fig. 2H](#)), hares 9% ( $n = 751$ ; [Fig. 2D](#)), foxes 7% ( $n = 645$ ; [Fig. 2D](#)) and fallow deer 7% ( $n = 591$ ; [Fig. 2B](#); [Table 2](#)). Seasonal variations in the number of detections recorded reflected the time and duration of the constituent studies: 47% in spring, 24% in summer, 18% in autumn and 11% in winter ([Table 2](#)).

### Species-specific activity patterns

Foxes exhibited a nocturnal activity pattern, with some irregular diurnal activity. Nearly three-quarters of all fox activity (73%) occurred between 21:00 and 07:00 ([Fig. 3A](#)). Pine marten activity was nocturnal, with 70% of all detections occurring between 21:00 and 06:00 ([Fig. 3B](#)). Badgers were nocturnal with a unimodal pattern of activity; the number of detections increased rapidly after dusk and decreased rapidly around dawn. Fewer than 15% of all badger detections were recorded between 06:00 and 19:00, indicating little diurnal activity ([Fig. 3C](#)). Hare activity patterns were bimodal, demonstrating predominantly crepuscular behaviour with 71% of all activity occurring between 04:00 and 08:00 (47%) and 20:00–23:00 (24%; [Fig. 3A](#)). Rabbits were also crepuscular, with 35% and 32% of all detections occurring between 04:00 and 08:00 and 17:00–23:00, respectively ([Fig. 3A](#)). Squirrels were diurnal, being active from dawn to dusk with fewer than 5% of triggers occurring between 19:00 and 05:00 ([Fig. 3B](#)). Wood mice were nocturnal with 81% of activity occurring between 21:00 and 06:00 ([Fig. 3B](#)). Fallow deer were diurnal with 63% of detections occurring between 06:00 and 18:00 ([Fig. 3C](#)).





**Figure 2** Camera trap images of 10 mammal species detected in Northern Ireland between 2013 and 2016. (A) Badger, (B) fallow deer, (C) fox, (D) European hare, (E) Irish hare, (F) pine marten, (G) rabbit, (H) grey squirrel, (I) red squirrel and (J) wood mouse (circled). Images provided by A. Caravaggi A, D, E, J, K. Hogg and M. Freeman (B, C, G) and D.G. Tosh F, H, I.

Full-size DOI: [10.7717/peerj.5827/fig-2](https://doi.org/10.7717/peerj.5827/fig-2)

There were significant differences in offsets across seasons in fox activity patterns ( $F_{33,641} = 23.36$ ,  $p < 0.0001$ ); winter was significantly different from all other seasons due to decreased activity during daylight and crepuscular periods (Fig. 4C). Significant differences were observed across and between all seasons ( $F_{3,962} = 86.28$ ,  $p < 0.0001$ ), except spring-autumn in pine marten activity patterns (Fig. 4B). Badger activity patterns exhibited significant differences in offsets across seasons ( $F_{3,943} = 32.54$ ,  $p < 0.0001$ ; Fig. 4C) except for winter-autumn and summer-spring. Seasonal offsets differed significantly in hare activity patterns ( $F_{3,747} = 19.33$ ,  $p < 0.0001$ ), specifically between spring and summer ( $p < 0.0001$ ) and summer and autumn ( $p < 0.001$ ; Fig. 4D); hares exhibited more diurnal activity both in spring and in autumn. There were significant differences in offsets across and between seasons in rabbit ( $F_{3,1171} = 12.93$ ,  $p < 0.0001$ ;

**Table 2** Total number of species detections during camera trap surveys in Northern Ireland from 2013 to 2016.

Species			Season				$\Sigma$
Common name	Latin name	BM (kg)	Spring	Summer	Autumn	Winter	
Fallow deer	<i>Dama dama</i>	57.00	38	484	61	8	591
Badger	<i>Meles meles</i>	11.00	618	225	36	68	947
Fox	<i>Vulpes vulpes</i>	4.80	198	183	149	115	645
Hare	<i>Lepus sp.</i>	3.46	301	339	105	6	751
Rabbit	<i>Oryctolagus cuniculus</i>	1.59	492	417	238	28	1,175
Pine marten	<i>Martes martes</i>	1.30	251	73	356	286	966
Squirrel	<i>Sciurus sp.</i>	0.44	1,798	317	462	293	2,870
Wood mouse	<i>Apodemus sylvaticus</i>	0.02	449	57	119	191	816

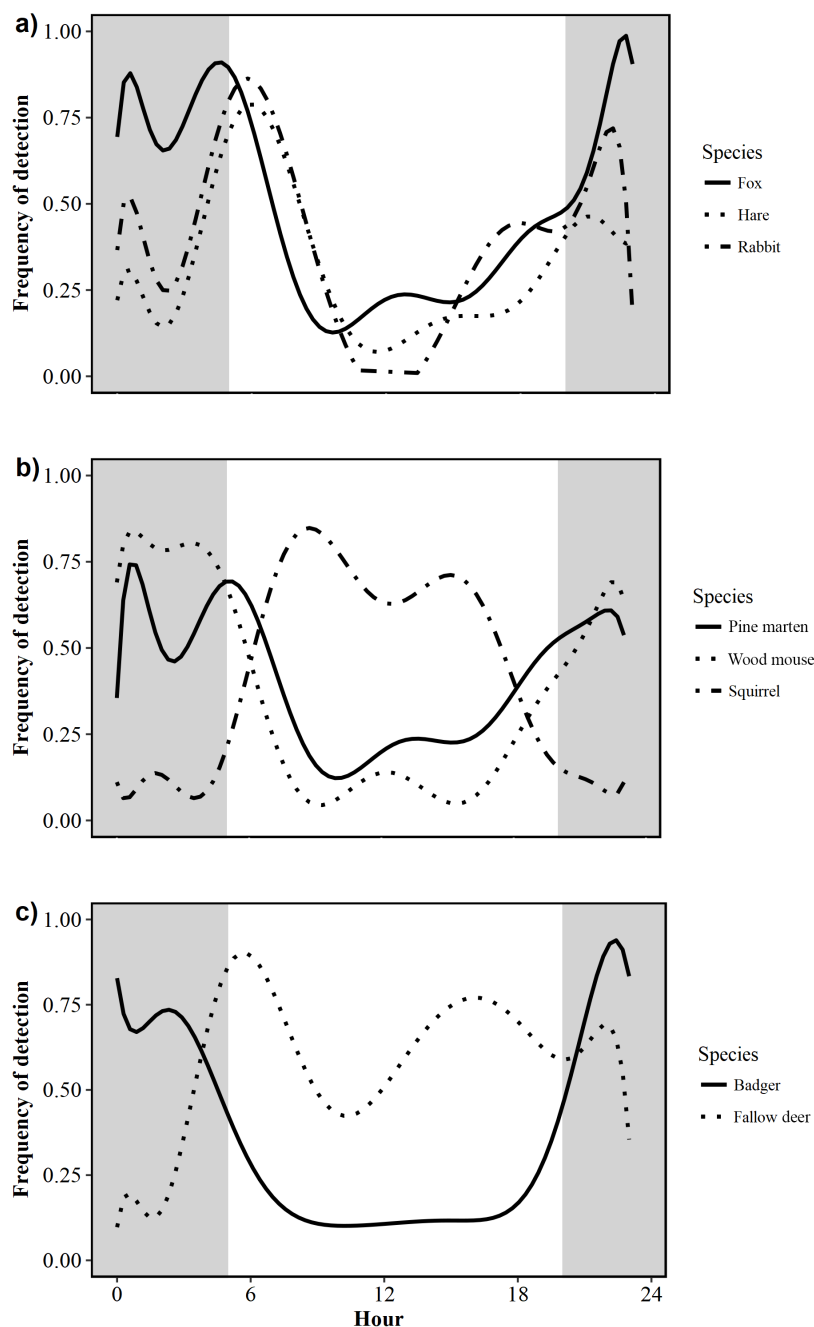
**Note:**

Hare = Irish hare (*Lepus timidus hibernicus*) and European hare (*L. europaeus*); squirrel = grey squirrel (*Sciurus carolinensis*) and red squirrel (*S. vulgaris*). BM = body mass (Jones et al., 2009). Hare and squirrel body mass are given as a mean of the two detected species: European hare = 3.82 kg; Irish hare = 3.11 kg; grey squirrel = 0.55 kg; red squirrel = 0.33 kg. Species are ordered according to body mass.

Fig. 4F) and squirrel activity patterns ( $F_{3,2866} = 76.52$ ,  $p < 0.0001$ ; Fig. 4G). Offsets were significantly different across seasons in wood mouse activity patterns ( $F_{3,812} = 39.31$ ,  $p < 0.0001$ ), with diurnal activity increasing in summer (Fig. 4H). Fallow deer activity patterns exhibited significant differences in offsets across seasons ( $F_{3,587} = 16.7$ ,  $p < 0.0001$ ), specifically between spring and autumn ( $p < 0.0001$ ) and summer and autumn ( $p > 0.0001$ ; Fig. 4B).

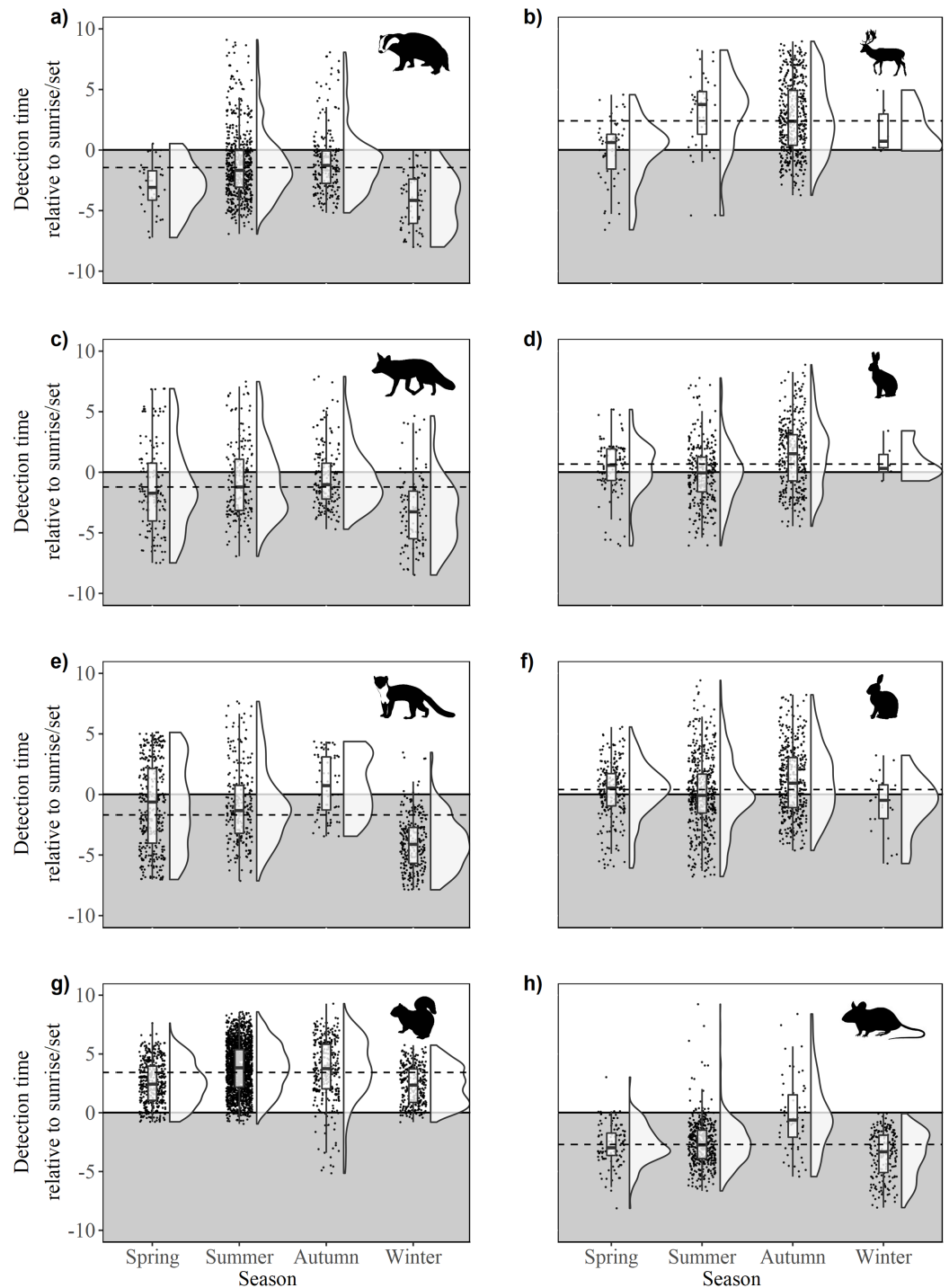
### Predator-prey relationships

There was evidence of correlative relationships between all predator-prey pairs, both annually and between seasons. Fox and hare annual activity patterns showed 73% overlap (CI [68–77%]; Table 3) and were significantly positively correlated with a peak at  $-2$  h (peak lag =  $pl$ , hereafter;  $r = 0.663$ ,  $t_{22} = 4.15$ ,  $p < 0.0005$ ; Table 4). The degree of overlap peaked in spring at 75% (CI [64–84%]; Table 3;  $pl = 1$  h,  $r = -0.554$ ,  $t_{22} = 3.12$ ,  $p < 0.005$ ; Table 4). There were significant correlations in the summer (Table 4). Annual activity patterns of foxes and rabbits overlapped by 80% (CI [75–83%]; Table 3) and were significantly correlated, with a peak at  $-1$  h ( $pl = -1$  h,  $r = 0.661$ ,  $t_{22} = 4.13$ ,  $p < 0.0005$ ; Table 4). Overlap was greatest during spring at 89% (CI [86–98%]; Table 3;  $pl = 1$  h,  $r = 0.701$ ,  $t_{22} = 4.61$ ,  $p < 0.0005$ ; Table 4) and lowest during winter (51 CI [31–71%]; Table 3). Seasonal activity patterns between foxes and rabbits were positively correlated during spring and summer (Table 4), but there were no significant correlations evident during the rest of the year. Fox and wood mouse annual activity patterns overlapped by 81% (CI [75–87%]; Table 3). Overlap was high in all seasons but was greatest in summer with at 85% (CI [81–92%]; Table 3). Annual activity was significantly correlated ( $pl = 1$  h,  $r = 0.754$ ,  $t_{22} = 5.39$ ,  $p \leq 0.0001$ ; Table 4), with similar peaks in cross-correlation coefficients in spring (Table 4) and autumn, with greatest correlation occurring in summer ( $pl = 0$  h,  $r = 0.761$ ,  $t_{22} = 5.50$ ,  $p \leq 0.0001$ ; Fig. 4; Table 4).



**Figure 3** Circadian activity patterns of 10 mammal species detected during camera trap surveys in Northern Ireland from 2013 to 2016. (A) Fox (*Vulpes vulpes*) hare (Irish hare, *Lepus timidus hibernicus* and European hare, *L. europaeus*; see Fig. S1) and rabbit (*Oryctolagus cuniculus*); (B) pine marten (*Martes martes*), wood mouse (*Apodemus sylvaticus*) and squirrel (grey squirrel, *Sciurus californicus* and red squirrel, *Sciurus vulgaris*; see Fig. S2); (C) badger (*Meles meles*) and fallow deer (*Dama dama*). Shaded areas represent night time. [Full-size !\[\]\(ba1b80118482ccef74a5d718ca4d7242\_img.jpg\) DOI: 10.7717/peerj.5827/fig-3](https://doi.org/10.7717/peerj.5827/fig-3)

Pine marten and wood mouse annual activity patterns were correlated with a 71% (CI [64–74%]) overlap ( $pl = 0$  h,  $r = 0.536$ ,  $t_{22} = 2.98$ ,  $p \leq 0.05$ ; Table 4). Overlap was greater than 50% for all seasons with a peak of 77% (CI [66–93%]) occurring in winter



**Figure 4** Time of detection relative to sunrise/sunset during spring, summer, autumn and winter for 10 mammal species observed during camera trap surveys in Northern Ireland between 2013 and 2016. (A) Badger, (B) fallow deer, (C) fox, (D) hare (Irish hare and European hare), (E) pine marten, (F) rabbit, (G) squirrel (grey squirrel and red squirrel), and (H) wood mouse. The upper, unshaded area denotes daytime, the lower, shaded area denotes night. Dashed lines indicate mean annual offset. Boxes represent the mean  $\pm$  Standard Deviation. Raincloud plots (Allen *et al.*, 2018a, 2018b) represent the density and spread of all contributing data points. [Full-size !\[\]\(5f471a71b78d7676bc356df190b88ab4\_img.jpg\) DOI: 10.7717/peerj.5827/fig-4](https://doi.org/10.7717/peerj.5827/fig-4)

**Table 3** Annual and seasonal overlap (% with 95% Confidence Intervals (CIs)) in the activity patterns of five predator-prey pairs.

Species		Season				
Predator	Prey	Annual	Spring	Summer	Autumn	Winter
Fox	Hare	73 (68–77)	75 (64–84)	67 (60–73)	48 (31–52)	–
Fox	Rabbit	80 (75–83)	89 (86–98)	78 (71–85)	52 (38–55)	51 (31–71)
Fox	Wood mouse	81 (75–87)	78 (67–89)	85 (81–92)	69 (57–74)	68 (65–98)
Marten	Squirrel	40 (33–41)	28 (16–30)	54 (41–60)	40 (32–41)	5 (0–5)
Marten	Wood mouse	71 (64–74)	69 (57–82)	71 (56–82)	63 (52–66)	77 (66–93)

**Note:**

Animals were detected during camera trap surveys in Northern Ireland between 2013 and 2016. Hare = Irish hare (*Lepus timidus hibernicus*) and European hare (*L. europaeus*); squirrel = grey squirrel (*Sciurus carolinensis*) and red squirrel (*S. vulgaris*). Few hares were detected during winter. Activity data were resampled 1,000 times per pair, per category, to generate CIs. For annual overlap plots, see Fig. S4.

months (Table 3). Activity patterns were significantly correlated in spring ( $pl = 10$  h,  $r = -0.44$ ,  $t_{22} = 2.29$ ,  $p \leq 0.05$ ; Table 4) and winter ( $pl = 3$  h,  $r = -0.503$ ,  $t_{22} = 2.73$ ,  $p \leq 0.05$ ). Pine marten and squirrel annual patterns overlapped by 40% (CI [33–41%]; Table 3) and their activity was significantly correlated ( $pl = 2$  h,  $r = -0.621$ ,  $t_{22} = 3.72$ ,  $p < 0.001$ ; Table 4). Seasonal overlap peaked during summer at 54% (CI [41–60%]) but was almost entirely absent during winter (Table 3). Significant correlations between seasonal activity patterns were observed in all seasons except during autumn: spring,  $pl = 1$  hr, ( $r = -0.625$ ,  $t_{22} = 3.76$ ,  $p > 0.001$ ); summer,  $pl = -2$  h ( $r = -0.512$ ,  $t_{22} = 2.79$ ,  $p < 0.001$ ); and winter,  $pl = -1$  h ( $r = -0.665$ ,  $t_{22} = 4.18$ ,  $p < 0.0005$ ; Table 4).

## DISCUSSION

This study describes the first investigation into the activity patterns of a range of mammal species on the island of Ireland, adding to information gathered from across the species' ranges and to those for which little is recorded. The study also contributes to the growing body of literature that uses remote camera traps to infer activity (Bridges & Noss, 2011; Monterroso, Alves & Ferreras, 2013; Ross et al., 2013; Carbajal-Borges, Godínez-Gómez & Mendoza, 2014; Allen, Peterson & Krofel, 2018) and reveals that our focal species exhibit differences in activity relative to sunrise/sunset and throughout the year. In some cases, activity changed markedly. For example, pine martens and rabbits were more diurnal in the summer while during the rest of the year they were nocturnal and cathemeral, respectively. Similarly, predator-prey relationships were also found to vary throughout the year. The temporal overlap between the activity patterns of foxes, lagomorphs (rabbits and hares) and wood mice, were high ( $>0.75$ ) during the spring and summer and declined during autumn and winter. It is important to acknowledge that a wide variety of factors affect activity patterns and, while our data show positive correlations in activity between some predator and prey species that could be indicative of a causal relationship, we do not attempt to describe observed patterns as being driven by any specific stimulus.

Foxes were nocturnal with their activity increasing during dusk and decreasing at dawn, although there was also some activity during daylight. The bimodal activity pattern

**Table 4** Temporal (dis)associations between activity patterns of five predator-prey pairs.

Predator	Prey	Season	Lag (hrs)		Peak lag	<i>t</i>	<i>r</i>
			From	To			
Fox	Hare	Annual	-4	0	-2	4.15	0.663**
Fox	Hare	Spring	-2	3	1	3.12	-0.554*
Fox	Hare	Summer	-5	0	-3	3.54	0.602**
Fox	Hare	Autumn	-3	-1	-3	2.08	0.405*
Fox	Rabbit	Annual	-10	-8	-9	2.13	0.413*
Fox	Rabbit	Annual	-3	1	-1	4.13	0.661**
Fox	Rabbit	Annual	8	11	10	2.10	-0.409*
Fox	Rabbit	Spring	-1	2	1	4.61	0.701***
Fox	Rabbit	Spring	-	-	11	2.14	-0.415*
Fox	Rabbit	Summer	-12	-9	-4	2.52	-0.473*
Fox	Rabbit	Summer	-4	1	-1	4.06	0.654**
Fox	Mouse	Annual	-12	-10	-11	2.56	-0.480*
Fox	Wood mouse	Annual	-2	3	1	5.39	0.754***
Fox	Wood mouse	Spring	-2	3	1	3.26	0.570*
Fox	Wood mouse	Summer	-10	-9	-10	2.09	-0.407*
Fox	Wood mouse	Summer	-1	1	0	5.50	0.761***
Fox	Wood mouse	Autumn	0	2	2	3.04	0.544*
Pine marten	Squirrel	Annual	-12	-7	-9	2.15	0.416*
Pine marten	Squirrel	Annual	-1	4	1	3.72	-0.621**
Pine marten	Squirrel	Spring	-10	-4	-6	2.50	0.470*
Pine marten	Squirrel	Spring	0	5	1	3.76	-0.625**
Pine marten	Squirrel	Summer	-4	-1	-2	2.79	-0.512*
Pine marten	Squirrel	Summer	-	-	8	2.46	0.464*
Pine marten	Squirrel	Winter	-9	-7	-8	2.79	0.511*
Pine marten	Squirrel	Winter	-2	3	-1	4.18	-0.665**
Pine marten	Squirrel	Winter	9	11	10	3.11	0.553*
Pine marten	Wood mouse	Annual	-1	1	0	2.98	0.536*
Pine marten	Wood mouse	Spring	7	11	10	2.29	-0.440*
Pine marten	Wood mouse	Summer	3	-2	-2	2.24	0.431*
Pine marten	Wood mouse	Summer	-	-	8	2.46	0.464*
Pine marten	Wood mouse	Winter	2	4	3	2.73	-0.503*
Pine marten	Wood mouse	Winter	6	7	6	2.05	0.400*

**Note:**

Lag range and peak lag were calculated using cross-correlation functions (CCFs). *t* = *t*-value, where the critical value ( $p = 0.05$ ,  $df = 22$ ) = 1.72. *r* = correlation coefficient. Positive values indicate that detections of predators preceded/succeeded those of prey species. Negative values indicate the opposite. Statistical significance is indicated by asterisks, where, \*  $\leq 0.05$ ; \*\*  $\leq 0.001$ ; \*\*\*  $\leq 0.0001$ .

suggested by previous studies (Reynolds & Tapper, 1995) was not evident. Rural fox activity may be influenced by anthropogenic disturbance; diurnal activity is more common where disturbance is low (Díaz-Ruiz et al., 2016). In the present study, however, diurnal activity may have been facilitated, not by a lack of disturbance, but by the timing of the disturbance. Foxes are subject to nocturnal lethal control (i.e. shooting, facilitated by

high-powered spot-lamps and other methods) across Northern Ireland, such that nocturnal disturbance by hunting parties is likely to be considerably greater than that which occurs during the day, albeit periodically. However, nocturnal control, while frequent, is regionally variable and intermittent. Furthermore, the most abundant and commonly taken prey animals are nocturnal (e.g. small rodents) or crepuscular (e.g. lagomorphs). Irregularities in the activity patterns described herein may therefore be indicative of the true activity signal along with occasional temporal displacement.

Hares were active throughout the night, with peaks of activity occurring between 20:00 and 23:00, and 04:00 and 08:00. Diurnal activity was most commonly recorded in the summer months, when nights are shortest (*sensu Flux & Angermann, 1990; Holley, 1992; Langbein et al., 1999*). This study is the first to quantify activity patterns of the Irish hare, which exhibited the same bimodal crepuscular-nocturnal behaviour as the European hare. The Irish hare is a subspecies of mountain hare that is endemic to Ireland while the European hare is almost exclusively found in Mid-Ulster, likely having been introduced in the 1970s (*Caravaggi, Montgomery & Reid, 2015*). Previous studies have demonstrated that the species are ecologically similar (*Reid, 2011; Caravaggi, Montgomery & Reid, 2015*), occur in sympatry (*Caravaggi et al., 2016*) and exhibit a high degree of bidirectional hybridisation (*Prodohl et al., 2013*). The similarity in activity patterns described herein adds additional support to the suggestion that strong interspecific competition is likely where they occur in sympatry where resources are limiting. The activity patterns of rabbits were similar to those in the Mediterranean region where rabbits were active throughout the day, but most activity occurred in the early morning and late afternoon (*Monterroso, Alves & Ferreras, 2013*). However, while our data suggest a similar bimodal pattern, the second, evening peak was weak in our dataset.

Overall, pine marten were nocturnal with activity becoming more diurnal between spring and early autumn, similar to patterns reported elsewhere in the species' range (*Monterroso, Alves & Ferreras, 2013; Zalewski, 2007; Zielinski, Spencer & Barrett, 1983*). Previous studies have suggested that pine marten activity patterns may be linked to those of prey species (*Zielinski, Spencer & Barrett, 1983*). The relationship between predator and prey is highlighted by the suggestion that pine martens may play a role in the control of the invasive grey squirrel, to the benefit of the native red (*Sheehy & Lawton, 2014*). Pine marten activity in this study overlapped considerably with that of the wood mouse in summer and winter. Studies indicate the importance of wood mice to pine marten in Ireland in the absence of field voles (*Lynch & McCann, 2007; O'Meara et al., 2013; J. P. Twining, 2018, unpublished data*) and seasonal comparisons, in particular, show that wood mice are a major food source in all seasons but autumn (*J. P. Twining, 2018, unpublished data*) which is reflected in the correlation of activity reported here.

Squirrel activity peaked several hours after dawn and ceased before sunset. The species were almost exclusively diurnal between seasons, with detections occurring throughout the day (*Tonkin, 1983; Gurnell & Hare, 2008*). There was some evidence of variation of circadian patterns between seasons, with detections suggesting a bimodal pattern in the summer, and a unimodal pattern in the winter. The bimodality observed in summer was caused by low activity around midday, possibly in response to

increased temperatures (Tonkin, 1983; Zub et al., 2013). Similar seasonal variation in activity has been observed in previous studies (Thompson, 1977; Tonkin, 1983; Gurnell & Hare, 2008). Sunrise/set offsets revealed some crepuscular/diurnal activity, particularly during autumn and winter, behaviour that has not been reported previously (Tonkin, 1983; Wauters & Dhondt, 1987; Wauters, Swinnen & Dhondt, 1992). Foraging animals balance the risk of predation against the benefits of energy gains (Dammhahn & Almeling, 2012) and the acuity of squirrel eyesight is sub-optimal in low-light conditions (i.e. dawn/dusk; Jacobs, Birch & Blakeslee, 1982). Crepuscular activity may, therefore, be a response to local, diurnal predator activity, thus rendering an apparently suboptimal strategy contextually advantageous (Dammhahn & Almeling, 2012). The drivers of the observed crepuscular behaviour are, however, unknown and are worthy of further study.

Wood mice were nocturnal, although there was an increase in crepuscular and diurnal activity recorded during summer when shorter nights may provide insufficient foraging time for lactating female wood mice to meet their daily energetic requirements. Juveniles recently out of the nest also may be active during daylight hours (I. Montgomery, 2018, personal observation). The species has previously been reported to exhibit temporal variability in activity patterns between seasons (Miller & Elton, 1955; Wolton, 1983). Wood mouse detections were chance occurrences as none of the camera trap projects that comprise this study specifically focussed on small mammals. While small mammals may present identification challenges to camera trap studies (Claridge, Paull & Barry, 2010; Meek & Vernes, 2016), wood mice were attracted to arboreal baiting stations, often being the most recorded species. In contrast to other small mammals in Ireland, wood mice are known to be arboreal, so the methodology used could be applied elsewhere in the world to improve our knowledge of cryptic small mammals.

Anti-predator behaviours, which include avoidance (Curé et al., 2013), facilitate the survival of prey by mitigating predation (Sih & Christensen, 2001). In the current study, foxes consistently occurred in sympatry with hares and rabbits, both of which are putative prey species (Reynolds & Aebischer, 1991). Both predator-prey annual cross-correlations indicated that foxes and lagomorphs are likely to be active simultaneously. In temperate zones, foxes typically mate in late winter/early spring; litters may contain up to 12 cubs, with food availability being a significant factor (Larivière & Pasitschniak-Arts, 1996). Here we describe foxes as becoming increasingly crepuscular in late-spring and summer, thus increasing the potential for temporal overlap with both species of lagomorph. This suggests that predation of these species may increase during the fox breeding season. Indeed, lagomorphs may become an increasingly important food source as the cubs grow, particularly if the vixen has many offspring, as both lagomorphs are amongst the most substantial meals available to a medium-sized terrestrial predator in Northern Ireland. Given the relative lack of carnivores in the country, we can be reasonably confident that the behavioural repertoires of both hares and rabbits in Northern Ireland include fox-specific anti-predator behaviours. Pine marten and squirrels showed a direct negative correlation in the annual comparison, as well as during spring, summer, and winter. Thus, predator and prey activity are simultaneously



different (i.e. when pine martens are most active, squirrels are least active and vice-versa). Squirrels are also subject to predation by diurnal birds of prey ([Petty, Lurz & Rushton, 2003](#)); by avoiding nocturnal predators, the animals become diurnally vulnerable. However, while squirrels have relatively poor nocturnal vision ([Arden & Silver, 1962](#)); their spatial acuity improves under brighter conditions ([Jacobs, Birch & Blakeslee, 1982](#)). Foraging during the night thus greatly increases the risk of predation.

It was not possible to optimise the present study *a priori*, comprising, as it does, several individually-designed surveys. For example, there was considerable variation in the effective densities of camera trapping arrays. Higher density arrays increase the chances of capturing an animal in-transit, being placed near a resting site (i.e. sett, drey, form, etc.), and capturing the focal species if it occurs at low densities. Camera trap surveys, therefore, would ideally consistently use high-density arrays to return an abundance of data. This is rarely feasible, however, given time, personnel, and financial constraints, all of which were limiting factors to the contributing surveys, though, the involvement of trained citizen scientists spreads workload and increases the amount of data available for analysis ([Swanson et al., 2015](#)). However, one of the key strengths of camera trap research is the ability to collate data from disparate, methodologically unique studies to describe fundamental ecological parameters. Moreover, the potential importance of bycatch data from camera trap surveys cannot be over-stated and it is important that data can be aggregated across independent surveys to answer relevant questions.

In contrast to terrestrial animals that move on a 2D plain, arboreal animals move within 3D space, thus decreasing the likelihood of a random capture in transit. Squirrels were enticed to specific locations for image capture by the use of baited stations. While baiting is certainly effective, it is not without its problems. For example, animals may identify bait stations as a reliable source of food, and thus frequently revisit them, thereby inflating counts ([Rowcliffe & Carbone, 2008](#)). Moreover, feeding animals may spend a considerable amount of time in front of the camera if undisturbed than those captured in transit, again affecting interpretations. The degree of uncertainty increases considerably where the focal species does not exhibit individually-identifiable colouration or markings. Captures from baited stations, therefore, may only represent one, or a handful of individuals ([Trolle & Kéry, 2003](#); [Weckel, Giuliano & Silver, 2006](#)). However, the present study is only concerned with activity, and, hence, the detection of any individual during a given time period was assumed to be representative of the species as a whole.

It should also be noted that the data used in the present study are uncorrected for detection probability. Thus, observed patterns could represent changes in animal activity, abundance or detectability over time. For example, ambient noise can affect individual behaviour ([Francis & Barber, 2013](#)), subsequently impacting the number of detections recorded during camera trap surveys along with associated data and inferences. While we acknowledge that many factors will impact the detectability of a species, including the height of emergent vegetation, camera placement, lighting condition (e.g. daytime/night time) and the density and behaviour of the focal species ([O'Brien, Kinnaird & Wibisono, 2003](#); [Royle & Nichols, 2003](#); [Silveira, Jácómo & Diniz-Filho, 2003](#); [Larrucea et al., 2007](#); [Harmsen et al., 2010](#); [O'Connell, Nichols & Karanth, 2010](#); [Chandler, Royle & King, 2011](#);

*Meek et al., 2014; Cusack et al., 2015; Meek, Ballard & Falzon, 2016*), we are confident that, given our sample sizes, the data presented herein reflect actual activity patterns of the reported species.

Understanding the activity patterns of wildlife, and seasonal variations thereof, is of considerable benefit in furthering our understanding of species ecologies and informing future research (e.g. the development and application of efficient ecological surveys), thus paving the way for the development of appropriate management policies and/or conservation programmes. Knowing when a species is most or least likely to be active can lead to considerable methodological improvements, including potentially reducing the probability of achieving false-negatives, particularly for scarce or cryptic species. Camera trap surveys seeking to investigate circadian and intra-annual species activity patterns should, ideally, be conducted over the course of an entire year, focussing on areas which the focal species are known to frequent, and employing a large number of traps. Furthermore, additional data such as climate, topography and habitat may further inform interpretations and facilitate the application of statistical models. While the temporal distribution of data herein are arguably suboptimal due to the application of varied (i.e. non-standardised) methodologies, and environmental data are lacking, they are nevertheless of great utility in describing fundamental aspects of species' ecologies.

## CONCLUSIONS

Camera traps allow practitioners to concurrently survey across a wide range of species and habitats, providing data that may be of great utility in informing subsequent investigations and/or answering important ecological questions. In the present study, we draw together several disparate, and very different camera trap surveys to describe fundamental behavioural parameters of 10 mammal species. We found that focal-species-specific and associated bycatch data derived from camera traps are effective in providing insight into the daily lives of mammals. In particular, they have provided an effective means of describing circadian activity patterns and seasonal variations in temporal activity. In addition, they have utility in investigating temporal aspects of interspecific interactions and directing further research into such relationships. Invasive alien species are an ongoing issue and mitigating the threats posed to Irish hares and red squirrels by their respective conspecifics and potential predators requires accurate ecological data to effectively guide conservation efforts. Furthermore, prey switching is an issue with regards to carnivores of conservation interest (e.g. pine martens) and shifts in the activity patterns of disease vectors (e.g. deer, badgers) are relevant to their control. As many of the species described herein are of economic, management and/or conservation interest, our data will help inform the development of appropriate species-specific methodologies and processes and associated policies.

## ACKNOWLEDGEMENTS

Thanks to the great many support staff, fieldworkers and landowners who were involved in the surveys which contributed to this manuscript. We also thank three reviewers, whose feedback helped guide improvements to the manuscript.

## ADDITIONAL INFORMATION AND DECLARATIONS

### Funding

Both squirrel studies were funded under the Northern Ireland Challenge Fund and supported by the Northern Ireland Environment Agency's Natural Heritage Research Partnership. Hare surveys were commissioned and funded by the Natural Heritage Research Partnership (NHRP), between the Northern Ireland Environment Agency (NIEA) and Quercus, Queen's University Belfast (QUB) with part-funding from the People's Trust for Endangered Species (PTES). Deer surveys were part of Department of Environment, Agriculture and Rural Affairs (DAERA) or Department for the Economy (DfE) funded PhD studentships. The funders had no role in study design, data collection and analysis, decision to publish, or preparation of the manuscript.

### Grant Disclosures

The following grant information was disclosed by the authors:

Northern Ireland Challenge Fund.

Northern Ireland Environment Agency's Natural Heritage Research Partnership.

Natural Heritage Research Partnership (NHRP).

Northern Ireland Environment Agency (NIEA) and Quercus.

Queen's University Belfast (QUB).

People's Trust for Endangered Species (PTES).

Department of Environment, Agriculture and Rural Affairs (DAERA) or Department for the Economy (DfE).

### Competing Interests

The authors declare that they have no competing interests.

### Author Contributions

- Anthony Caravaggi conceived and designed the experiments, performed the experiments, analysed the data, contributed reagents/materials/analysis tools, prepared figures and/or tables, authored or reviewed drafts of the paper, approved the final draft.
- Maria Gatta analysed the data, prepared figures and/or tables, authored or reviewed drafts of the paper, approved the final draft.
- Marie-Claire Valley contributed reagents/materials/analysis tools, authored or reviewed drafts of the paper, approved the final draft.
- Kayleigh Hogg performed the experiments, contributed reagents/materials/analysis tools, authored or reviewed drafts of the paper, approved the final draft.
- Marianne Freeman performed the experiments, contributed reagents/materials/analysis tools, authored or reviewed drafts of the paper, approved the final draft.
- Erfan Fadaei performed the experiments, contributed reagents/materials/analysis tools, authored or reviewed drafts of the paper, approved the final draft.
- Jaimie T.A. Dick conceived and designed the experiments, contributed reagents/materials/analysis tools, authored or reviewed drafts of the paper, approved the final draft.

- W. Ian Montgomery conceived and designed the experiments, contributed reagents/materials/analysis tools, authored or reviewed drafts of the paper, approved the final draft.
- Neil Reid conceived and designed the experiments, contributed reagents/materials/analysis tools, authored or reviewed drafts of the paper, approved the final draft.
- David G. Tosh conceived and designed the experiments, performed the experiments, contributed reagents/materials/analysis tools, authored or reviewed drafts of the paper, approved the final draft.

### Data Availability

The following information was supplied regarding data availability:

GitHub: [https://github.com/arcavaggi/PeerJ\\_mammal\\_activity](https://github.com/arcavaggi/PeerJ_mammal_activity)  
 Caravaggi A, Gatta M, Vallely M-C, Hogg K, Freeman M, Fadei E, Dick J, Montgomery WI, Reid N, Tosh D. 2018. arcavaggi/PeerJ\_mammal\_activity: Code & data archive (Version v1.0.0). Zenodo. <http://doi.org/10.5281/zenodo.1420397>.

### Supplemental Information

Supplemental information for this article can be found online at <http://dx.doi.org/10.7717/peerj.5827#supplemental-information>.

## REFERENCES

- Allen ML, Peterson B, Krofel M. 2018.** No respect for apex carnivores: distribution and activity patterns of honey badgers in the Serengeti. *Mammalian Biology* **89**:90–94 DOI [10.1016/j.mambio.2018.01.001](https://doi.org/10.1016/j.mambio.2018.01.001).
- Allen M, Poggiali D, Whitaker K, Marshall TR, Kievit R. 2018a.** Raincloud plots: a multi-platform tool for robust data visualization. *PeerJ Preprints* **6**:e27137v1 DOI [10.7287/peerj.preprints.27137v1](https://doi.org/10.7287/peerj.preprints.27137v1).
- Allen M, Poggiali D, Whitaker K, Marshall TR, Kievit R. 2018b.** RainCloudPlots tutorials and codebase. *Zenodo*. Version v1.0 DOI [10.5281/zenodo.1402959](https://doi.org/10.5281/zenodo.1402959).
- Arden GB, Silver PH. 1962.** Visual thresholds and spectral sensitivities of the grey squirrel (*Sciurus carolinensis leucotis*). *Journal of Physiology* **163**(3):540–557 DOI [10.1113/jphysiol.1962.sp006992](https://doi.org/10.1113/jphysiol.1962.sp006992).
- Ashby KR. 1972.** Patterns of daily activity in mammals. *Mammal Review* **1**(7–8):171–185 DOI [10.1111/j.1365-2907.1972.tb00088.x](https://doi.org/10.1111/j.1365-2907.1972.tb00088.x).
- Baker PJ, Harris S. 2006.** Does culling reduce fox (*Vulpes vulpes*) density in commercial forests in Wales, UK? *European Journal of Wildlife Research* **52**(2):99–108 DOI [10.1007/s10344-005-0018-y](https://doi.org/10.1007/s10344-005-0018-y).
- Bennie JJ, Duffy JP, Inger R, Gaston KJ. 2014.** Biogeography of time partitioning in mammals. *Proceedings of the National Academy of Sciences of the United States of America* **111**(38):13727–13732 DOI [10.1073/pnas.1216063110](https://doi.org/10.1073/pnas.1216063110).
- Bradley WG. 1967.** Home range, activity patterns, and ecology of the antelope ground squirrel in southern Nevada. *Southwestern Naturalist* **12**(3):231–251 DOI [10.2307/3669112](https://doi.org/10.2307/3669112).
- Bridges AS, Noss AJ. 2011.** Behaviour and activity patterns. In: O’Connell AF, Nichols JD, Karanth KU, eds. *Camera Traps in Animal Ecology: Methods and Analyses*. New York: Springer, 57–69.

- Cagnacci F, Boitani L, Powell RA, Boyce MS. 2010.** Animal ecology meets GPS-based radiotelemetry: a perfect storm of opportunities and challenges. *Philosophical Transactions of the Royal Society B: Biological Sciences* **365(1550)**:2157–2162 DOI [10.1098/rstb.2010.0107](https://doi.org/10.1098/rstb.2010.0107).
- Caravaggi A, Gatta M, Valley M-C, Hogg K, Freeman M, Fadei E, Dick J, Montgomery WI, Reid N, Tosh D. 2018.** arcaravaggi/PeerJ\_mammal\_activity: Code & data archive. Version v1.2.1. *Zenodo* DOI [10.5281/zenodo.1470320](https://doi.org/10.5281/zenodo.1470320).
- Caravaggi A, Montgomery WI, Reid N. 2015.** Range expansion and comparative habitat use of insular, congeneric lagomorphs: invasive European hares *Lepus europaeus* and endemic Irish hares *Lepus timidus hibernicus*. *Biological Invasions* **17(2)**:687–698 DOI [10.1007/s10530-014-0759-1](https://doi.org/10.1007/s10530-014-0759-1).
- Caravaggi A, Zaccaroni M, Riga F, Schai-Braun SC, Dick JT, Montgomery WI, Reid N. 2016.** An invasive-native mammalian species replacement process captured by camera trap survey random encounter models. *Remote Sensing in Ecology and Conservation* **2(1)**:45–58 DOI [10.1002/rse2.11](https://doi.org/10.1002/rse2.11).
- Carbajal-Borges JP, Godínez-Gómez O, Mendoza E. 2014.** Density, abundance and activity patterns of the endangered *Tapirus bairdii* in one of its last strongholds in southern Mexico. *Tropical Conservation Science* **7(1)**:100–114 DOI [10.1177/194008291400700102](https://doi.org/10.1177/194008291400700102).
- Carden RF, Carlin CM, Marnell F, McElholm D, Hetherington J, Gammell MP. 2011.** Distribution and range expansion of deer in Ireland. *Mammal Review* **41(4)**:313–325 DOI [10.1111/j.1365-2907.2010.00170.x](https://doi.org/10.1111/j.1365-2907.2010.00170.x).
- Caryl FM, Raynor R, Quine CP, Park K. 2012.** The seasonal diet of British pine marten determined from genetically identified scats. *Journal of Zoology* **288(4)**:252–259 DOI [10.1111/j.1469-7998.2012.00951.x](https://doi.org/10.1111/j.1469-7998.2012.00951.x).
- Chandler RB, Royle JA, King DI. 2011.** Inference about density and temporary emigration in unmarked populations. *Ecology* **92(7)**:1429–1435 DOI [10.1890/10-2433.1](https://doi.org/10.1890/10-2433.1).
- Claridge AW, Paull DJ, Barry SC. 2010.** Detection of medium-sized ground-dwelling mammals using infrared digital cameras: an alternative way forward? *Australian Mammalogy* **32(2)**:165–171 DOI [10.1071/am09039](https://doi.org/10.1071/am09039).
- Curé C, Antunes R, Alves AC, Visser F, Kvadsheim PH, Miller PJO. 2013.** Responses of male sperm whales (*Physeter macrocephalus*) to killer whale sounds: implications for anti-predator strategies. *Scientific Reports* **3(1)**:1579 DOI [10.1038/srep01579](https://doi.org/10.1038/srep01579).
- Cusack JJ, Dickman AJ, Rowcliffe JM, Carbone C, Macdonald DW, Coulson T. 2015.** Random versus game trail-based camera trap placement strategy for monitoring terrestrial mammal communities. *PLOS ONE* **10(5)**:e0126373 DOI [10.1371/journal.pone.0126373](https://doi.org/10.1371/journal.pone.0126373).
- Daan S. 1981.** Adaptive daily strategies in behavior. In: Aschoff J, ed. *Biological Rhythms*. Boston: Springer, 275–298.
- Dammhahn M, Almeling L. 2012.** Is risk taking during foraging a personality trait? A field test for cross-context consistency in boldness. *Animal Behaviour* **84(5)**:1131–1139 DOI [10.1016/j.anbehav.2012.08.014](https://doi.org/10.1016/j.anbehav.2012.08.014).
- De Bondi N, White JG, Stevens M, Cooke R. 2010.** A comparison of the effectiveness of camera trapping and live trapping for sampling terrestrial small-mammal communities. *Wildlife research* **37(6)**:456–465 DOI [10.1071/WR10046](https://doi.org/10.1071/WR10046).
- Department of Agriculture, Environment and Rural Affairs. 2018.** *Statistical Review of Northern Ireland Agriculture 2017*. Belfast: DAERA.
- Di Cerbo AR, Biancardi CM. 2013.** Monitoring small and arboreal mammals by camera traps: effectiveness and applications. *Acta Theriologica* **58(3)**:279–283 DOI [10.1007/s13364-012-0122-9](https://doi.org/10.1007/s13364-012-0122-9).

- Díaz-Ruiz F, Caro J, Delibes-Mateos M, Arroyo B, Ferreras P. 2016. Drivers of red fox (*Vulpes vulpes*) daily activity: prey availability, human disturbance or habitat structure? *Journal of Zoology* 298(2):128–138 DOI 10.1111/jzo.12294.
- Elton C, Ford EB, Baker JR, Gardner AD. 1931. The health and parasites of a wild mouse population. *Proceedings of the Zoological Society of London* 101(3):657–721 DOI 10.1111/j.1096-3642.1931.tb01037.x.
- Ensing EP, Ciuti S, De Wijs FA, Lentferink DH, Ten Hoedt A, Boyce MS, Hut RA. 2014. GPS based daily activity patterns in European red deer and North American elk (*Cervus elaphus*): indication for a weak circadian clock in ungulates. *PLOS ONE* 9(9):e106997 DOI 10.1371/journal.pone.0106997.
- Fairley JS. 1970. The food, reproduction, form, growth and development of the fox *Vulpes vulpes* (L.) in North-East Ireland. *Proceedings of the Royal Irish Academy* 69:103–137.
- Fenn MG, Macdonald DW. 1995. Use of middens by red foxes: risk reverses rhythms of rats. *Journal of Mammalogy* 76(1):130–136 DOI 10.2307/1382321.
- Flux JEC, Angermann R. 1990. The hares and jackrabbits. In: Chapman JA, Flux JEC, eds. *Rabbits, Hares and Pikas: Status Survey and Conservation Action Plan*. Oxford: IUCN/SSC Lagomorph Specialist Group, 76–78.
- Forestry Commission. 2018. *Woodland area, planting and publicly funded restocking. 2018 edition, first release*. Edinburgh: IFOS-Statistics, Forest Research.
- Francis CD, Barber JR. 2013. A framework for understanding noise impacts on wildlife: an urgent conservation priority. *Frontiers in Ecology and the Environment* 11(6):305–313 DOI 10.1890/120183.
- Griffin JM, Williams DH, Kelly GE, Clegg TA, O’Boyle I, Collins JD, More SJ. 2005. The impact of badger removal on the control of tuberculosis in cattle herds in Ireland. *Preventive Veterinary Medicine* 67(4):237–266 DOI 10.1016/j.prevetmed.2004.10.009.
- Gurnell J, Hare EJ. 2008. Rodents. In: Harris S, Yalden DW, eds. *Mammals of the British Isles*. Southampton: The Mammal Society, 54–199.
- Halle S, Stenseth NC. 2000. Introduction. In: Halle S, Stenseth NC, eds. *Activity Patterns in Small Mammals—An Ecological Approach*. Berlin: Springer, 3–17.
- Harmsen BJ, Foster RJ, Silver S, Ostro L, Doncaster CP. 2010. Differential use of trails by forest mammals and the implications for camera-trap studies: a case study from Belize. *Biotropica* 42(1):126–133 DOI 10.1111/j.1744-7429.2009.00544.x.
- Hertel AG, Zedrosser A, Mysterud A, Støen OG, Steyaert SM, Swenson JE. 2016. Temporal effects of hunting on foraging behavior of an apex predator: do bears forego foraging when risk is high? *Oecologia* 182(4):1019–1029 DOI 10.1007/s00442-016-3729-8.
- Hetem RS, Strauss WM, Fick LG, Maloney SK, Meyer LCR, Shobrak M, Fuller A, Mitchell D. 2012. Does size matter? Comparison of body temperature and activity of free-living Arabian oryx (*Oryx leucoryx*) and the smaller Arabian sand gazelle (*Gazella subgutturosa marica*) in the Saudi desert. *Journal of Comparative Physiology B* 182(3):437–449 DOI 10.1007/s00360-011-0620-0.
- HM Nautical Almanac Office. 2016. HM nautical almanac office: on-line data. Available at <http://astro.ukho.gov.uk/nao/online/> (accessed 17 February 2016).
- Hofmeester TR, Rowcliffe JM, Jansen PA. 2017. A simple method for estimating the effective detection distance of camera traps. *Remote Sensing in Ecology and Conservation* 3(2):81–89 DOI 10.1002/rse2.25.
- Holley AJF. 1992. Studies on the biology of the brown hare (*Lepus europaeus*) with particular reference to behaviour. PhD thesis. Durham University.

- Hoogenboom I, Daan S, Dallinga JH, Schoenmakers M. 1984.** Seasonal change in the daily timing of behaviour of the common vole, *Microtus arvalis*. *Oecologia* **61**(1):18–31 DOI [10.1007/bf00379084](https://doi.org/10.1007/bf00379084).
- Jacobs GH, Birch DG, Blakeslee B. 1982.** Visual acuity and spatial contrast sensitivity in tree squirrels. *Behavioural Processes* **7**(4):367–375 DOI [10.1016/0376-6357\(82\)90008-0](https://doi.org/10.1016/0376-6357(82)90008-0).
- Jones KR, Bielby J, Cardillo M, Fritz SA, O'Dell J, Orme CDL, Safi K, Sechrest W, Boakes E, Carbone C, Connolly C, Cutts MJ, Foster JK, Grenyer R, Habib M, Plaster CA, Price SA, Rigby EA, Rist R, Teacher A, Bininda-Emonds ORP, Gittleman JL, Mace GM, Purvis A. 2009.** PanTHERIA: a species-level database of life history, ecology, and geography of extant and recently extinct mammals. *Ecology* **90**(9):2648 DOI [10.1890/08-1494.1](https://doi.org/10.1890/08-1494.1).
- Karanth KU, Nichols JD, Kumar NS, Hines JE. 2006.** Assessing tiger population dynamics using photographic capture–recapture sampling. *Ecology* **87**(11):2925–2937 DOI [10.1890/0012-9658\(2006\)87\[2925:atpdup\]2.0.co;2](https://doi.org/10.1890/0012-9658(2006)87[2925:atpdup]2.0.co;2).
- Kays RW, Slauson KM. 2008.** Remote cameras. In: Long RA, MacKay P, Zielinski WJ, Ray JC, eds. *Noninvasive Survey Methods for Carnivores*. Washington, D.C.: Island Press.
- Kronfeld-Schor N, Dayan T. 2003.** Partitioning of time as an ecological resource. *Annual Review of Ecology, Evolution, and Systematics* **34**(1):153–181 DOI [10.1146/annurev.ecolsys.34.011802.132435](https://doi.org/10.1146/annurev.ecolsys.34.011802.132435).
- Kucera TE, Barrett R. 2011.** A history of camera trapping. In: O'Connell AF, Nichols JD, Karanth KU, eds. *Camera Traps in Animal Ecology: Methods and Analysis*. New York: Springer, 9–26.
- Langbein J, Hutchings MR, Harris S, Stoate C, Tapper SC, Wray S. 1999.** Techniques for assessing the abundance of brown hares *Lepus europaeus*. *Mammal Review* **29**(2):93–116 DOI [10.1046/j.1365-2907.1999.00040.x](https://doi.org/10.1046/j.1365-2907.1999.00040.x).
- Larivière S, Huot J, Samson C. 1994.** Daily activity patterns of female black bears in a northern mixed-forest environment. *Journal of Mammalogy* **75**(3):613–620 DOI [10.2307/1382508](https://doi.org/10.2307/1382508).
- Larivière S, Pasitschniak-Arts M. 1996.** *Vulpes vulpes*. *Mammalian Species* **537**:1–11 DOI [10.2307/3504236](https://doi.org/10.2307/3504236).
- Larrucea ES, Brussard PF, Jaeger MM, Barrett RH. 2007.** Cameras, coyotes, and the assumption of equal detectability. *Journal of Wildlife Management* **71**(5):1682–1689 DOI [10.2193/2006-407](https://doi.org/10.2193/2006-407).
- Leso P, Kropil R. 2010.** Influence of some methodological modifications on trapping efficiency and mortality of small terrestrial mammals (Rodentia). *Lynx* **41**:167–173.
- Linkie M, Dinata Y, Nugroho A, Haidir IA. 2007.** Estimating occupancy of a data deficient mammalian species living in tropical rainforests: Sun bears in the Kerinci Seblat region, Sumatra. *Biological Conservation* **137**(1):20–27 DOI [10.1016/j.biocon.2007.01.016](https://doi.org/10.1016/j.biocon.2007.01.016).
- Lode T. 1995.** Activity pattern of polecats *Mustela putorius* L. in relation to food habits and prey activity. *Ethology* **100**(4):295–308 DOI [10.1111/j.1439-0310.1995.tb00334.x](https://doi.org/10.1111/j.1439-0310.1995.tb00334.x).
- Lovari S, Valier P, Lucchi MR. 1994.** Ranging behaviour and activity of red foxes (*Vulpes vulpes*: Mammalia) in relation to environmental variables, in a Mediterranean mixed pinewood. *Journal of Zoology* **232**(2):323–339 DOI [10.1111/j.1469-7998.1994.tb01576.x](https://doi.org/10.1111/j.1469-7998.1994.tb01576.x).
- Lynch AB, McCann Y. 2007.** The diet of the pine marten (*Martes martes*) in Killarney National Park. *Biology & Environment: Proceedings of the Royal Irish Academy* **107**(2):67–76 DOI [10.3318/bioe.2007.107.2.67](https://doi.org/10.3318/bioe.2007.107.2.67).
- Maffei L, Noss AJ, Cuéllar E, Rumiz DI. 2005.** Ocelot (*Felis pardalis*) population densities, activity, and ranging behaviour in the dry forests of eastern Bolivia: data from camera trapping. *Journal of Tropical Ecology* **21**(3):349–353 DOI [10.1017/s0266467405002397](https://doi.org/10.1017/s0266467405002397).

- Meek PD, Ballard GA, Falzon G. 2016.** The higher you go the less you will know: placing camera traps high to avoid theft will affect detection. *Remote Sensing in Ecology and Conservation* **2(4)**:204–211 DOI [10.1002/rse2.28](https://doi.org/10.1002/rse2.28).
- Meek PD, Ballard G, Claridge A, Kays R, Moseby K, O'Brien T, O'Connell A, Sanderson J, Swann DE, Tobler M, Townsend S. 2014.** Recommended guiding principles for reporting on camera trapping research. *Biodiversity and Conservation* **23(9)**:2321–2343 DOI [10.1007/s10531-014-0712-8](https://doi.org/10.1007/s10531-014-0712-8).
- Meek PD, Vernes K. 2016.** Can camera trapping be used to accurately survey and monitor the Hastings River mouse (*Pseudomys oralis*)? *Australian Mammalogy* **38(1)**:44–51 DOI [10.1071/am15016](https://doi.org/10.1071/am15016).
- Meek PD, Vernes K, Falzon G. 2013.** On the reliability of expert identification of small-medium sized mammals from camera trap photos. *Wildlife Biology in Practice* **9(2)**:1–19 DOI [10.2461/wbp.2013.9.4](https://doi.org/10.2461/wbp.2013.9.4).
- Meredith M, Ridout M. 2017.** Overlap: estimates of coefficient of overlapping for animal activity patterns. R Package Version 0.3.0. Available at <https://CRAN.R-project.org/package=overlap> (accessed 7 January 2018).
- Merrill SB, Mech LD. 2003.** The usefulness of GPS telemetry to study wolf circadian and social activity. *Wildlife Society Bulletin* **31**:947–960.
- Middleton AD, Kauffman MJ, McWhirter DE, Jimenez MD, Cook RC, Cook JG, Albeke SE, Sawyer H, White PJ. 2013.** Linking anti-predator behaviour to prey demography reveals limited risk effects of an actively hunting large carnivore. *Ecology Letters* **16(8)**:1023–1030 DOI [10.1111/ele.12133](https://doi.org/10.1111/ele.12133).
- Miller RS, Elton C. 1955.** Activity rhythms in the Wood Mouse, *Apodemus sylvaticus* and the Bank Vole, *Clethrionomys glareolus*. *Proceedings of the Zoological Society of London* **125(3–4)**:505–519 DOI [10.1111/j.1096-3642.1955.tb00613.x](https://doi.org/10.1111/j.1096-3642.1955.tb00613.x).
- Monterroso P, Alves PC, Ferreras P. 2013.** Catch me if you can: diel activity patterns of mammalian prey and predators. *Ethology* **119(12)**:1044–1056 DOI [10.1111/eth.12156](https://doi.org/10.1111/eth.12156).
- Monterroso P, Alves PC, Ferreras P. 2014.** Plasticity in circadian activity patterns of mesocarnivores in Southwestern Europe: implications for species coexistence. *Behavioral Ecology and Sociobiology* **68(9)**:1403–1417 DOI [10.1007/s00265-014-1748-1](https://doi.org/10.1007/s00265-014-1748-1).
- Montgomery WI, Provan J, McCabe AM, Yalden SW. 2014.** Origin of British and Irish mammals: disparate post-glacial colonisation and species introductions. *Quaternary Science Reviews* **98**:144–165 DOI [10.1016/j.quascirev.2014.05.026](https://doi.org/10.1016/j.quascirev.2014.05.026).
- Nouvellet P, Rasmussen GSA, Macdonald DW, Courchamp F. 2012.** Noisy clocks and silent sunrises: measurement methods of daily activity pattern. *Journal of Zoology* **286(3)**:179–184 DOI [10.1111/j.1469-7998.2011.00864.x](https://doi.org/10.1111/j.1469-7998.2011.00864.x).
- O'Brien TG, Kinnaid MF, Wibisono HT. 2003.** Crouching tigers, hidden prey: sumatran tiger and prey populations in a tropical forest landscape. *Animal Conservation* **6(2)**:131–139.
- O'Connell AF, Nichols JD, Karanth KU. eds. 2010.** *Camera traps in animal ecology: methods and analyses*. Tokyo: Springer Science & Business Media.
- Oliveira-Santos LGR, Zucco CA, Antunes PC, Crawshaw PG Jr. 2010.** Is it possible to individually identify mammals with no natural markings using camera-traps? A controlled case-study with lowland tapirs. *Mammalian Biology* **75(4)**:375–378 DOI [10.1016/j.mambio.2009.08.005](https://doi.org/10.1016/j.mambio.2009.08.005).
- O'Meara D, Sheehy E, Turner PD, O'Mahony D, Harrington AP, Denman H, Lawton C, MacPherson J, O'Reilly C. 2013.** Non-invasive multi-species monitoring: real-time PCR



- detection of small mammal and squirrel prey DNA in pine marten (*Martes martes*) scats. *Acta Theriologica* **59**(1):111–117 DOI [10.1007/s13364-013-0155-8](https://doi.org/10.1007/s13364-013-0155-8).
- Palomares P, Delibes M. 1991.** Assessing three methods to estimate daily activity patterns in radio-tracked mongooses. *Journal of Wildlife Management* **55**(4):698–700 DOI [10.2307/3809521](https://doi.org/10.2307/3809521).
- Pereira JA. 2010.** Activity pattern of Geoffroy's cats (*Leopardus geoffroyi*) during a period of food shortage. *Journal of Arid Environments* **74**(9):1106–1109 DOI [10.1016/j.jaridenv.2010.03.017](https://doi.org/10.1016/j.jaridenv.2010.03.017).
- Petty SJ, Lurz PW, Rushton DIK. 2003.** Predation of red squirrels by northern goshawks in a conifer forest in northern England: can this limit squirrel numbers and create a conservation dilemma? *Biological Conservation* **111**(1):105–114 DOI [10.1016/s0006-3207\(02\)00254-9](https://doi.org/10.1016/s0006-3207(02)00254-9).
- Phillips AJK, Fulcher BD, Robinson PA, Klerman EB. 2013.** Mammalian rest/activity patterns explained by physiologically based modeling. *PLOS Computational Biology* **9**(9):e1003213 DOI [10.1371/journal.pcbi.1003213](https://doi.org/10.1371/journal.pcbi.1003213).
- Prodohl PA, Hughes MA, Hynes RA, Montgomery WI, Reid N. 2013.** Molecular evidence for bidirectional hybridisation between the endemic *Lepus timidus hibernicus* and the invasive *Lepus europaeus* in Ireland. In: Montgomery WI, ed. *Proceedings of the 11th International Mammalogical Congress*. Belfast: Queen's University Belfast, 77.
- Prugh LR, Golden CD. 2014.** Does moonlight increase predation risk? Meta-analysis reveals divergent responses of nocturnal mammals to lunar cycles. *Journal of Animal Ecology* **83**(2):504–514 DOI [10.1111/1365-2656.12148](https://doi.org/10.1111/1365-2656.12148).
- R Core Team. 2016.** *R: A language and environment for statistical computing*. Vienna: R Foundation for Statistical Computing. Available at <https://www.R-project.org/>.
- R Core Team. 2017.** *R: A language and environment for statistical computing*. Vienna: R Foundation for Statistical Computing. Available at <https://www.R-project.org/> (accessed 7 February 2018).
- Reid N. 2011.** European hare (*Lepus europaeus*) invasion ecology: implication for the conservation of the endemic Irish hare (*Lepus timidus hibernicus*). *Biological Invasions* **13**(3):559–569 DOI [10.1007/s10530-010-9849-x](https://doi.org/10.1007/s10530-010-9849-x).
- Reid N, McDonald RA, Montgomery WI. 2010.** Homogeneous habitat can meet the discrete and varied resource requirements of hares but may set an ecological trap. *Biological Conservation* **143**(7):1701–1706 DOI [10.1016/j.biocon.2010.03.041](https://doi.org/10.1016/j.biocon.2010.03.041).
- Reid N, Montgomery WI. 2007.** Is naturalisation of the brown hare in Ireland a threat to the endemic Irish hare? *Biology & Environment: Proceedings of the Royal Irish Academy* **107**(3):129–138 DOI [10.3318/bioe.2007.107.3.129](https://doi.org/10.3318/bioe.2007.107.3.129).
- Reynolds JC, Aebischer NJ. 1991.** Comparison and quantification of carnivore diet by faecal analysis: a critique, with recommendations, based on a study of the fox *Vulpes vulpes*. *Mammal Review* **21**(3):97–122 DOI [10.1111/j.1365-2907.1991.tb00113.x](https://doi.org/10.1111/j.1365-2907.1991.tb00113.x).
- Reynolds JC, Tapper SC. 1995.** Predation by foxes *Vulpes vulpes* on brown hares *Lepus europaeus* in central southern England, and its potential impact on annual population growth. *Wildlife Biology* **1**(1):145–158 DOI [10.2981/wlb.1995.019](https://doi.org/10.2981/wlb.1995.019).
- Roll U, Dayan T, Kronfeld-Schor N. 2006.** On the role of phylogeny in determining activity patterns of rodents. *Evolutionary Ecology* **20**(5):479–490 DOI [10.1007/s10682-006-0015-y](https://doi.org/10.1007/s10682-006-0015-y).
- Ross J, Hearn AJ, Johnson PJ, Macdonald DW. 2013.** Activity patterns and temporal avoidance by prey in response to Sunda clouded leopard predation risk. *Journal of Zoology* **290**(2):96–106 DOI [10.1111/jzo.12018](https://doi.org/10.1111/jzo.12018).
- Rowcliffe JM, Carbone C. 2008.** Surveys using camera traps: are we looking to a brighter future? *Animal Conservation* **11**(3):185–186 DOI [10.1111/j.1469-1795.2008.00180.x](https://doi.org/10.1111/j.1469-1795.2008.00180.x).

- Royle J, Nichols J. 2003. Estimating abundance from repeated presence-absence data or point counts. *Ecology* 84(3):777–790 DOI 10.1890/0012-9658(2003)084[0777:eafrrpa]2.0.co;2.
- Rychlik L. 2005. Overlap of temporal niches among four sympatric species of shrews. *Acta Theriologica* 50(2):175–188 DOI 10.1007/bf03194481.
- Sadlier LM, Webbon CC, Baker PJ, Harris S. 2004. Methods of monitoring red foxes *Vulpes vulpes* and badgers *Meles meles*: are field signs the answer? *Mammal Review* 34(1–2):75–98 DOI 10.1046/j.0305-1838.2003.00029.x.
- Schai-Braun SC, Rödel HG, Hackländer K. 2012. The influence of daylight regime on diurnal locomotor activity patterns of the European hare (*Lepus europaeus*) during summer. *Mammalian Biology* 77(6):434–440 DOI 10.1016/j.mambio.2012.07.004.
- Sheehy E, Lawton C. 2014. Population crash in an invasive species following the recovery of a native predator: the case of the American grey squirrel and the European pine marten in Ireland. *Biodiversity and Conservation* 23(3):753–774 DOI 10.1007/s10531-014-0632-7.
- Sih A, Christensen B. 2001. Optimal diet theory: when does it work, and when and why does it fail? *Animal Behaviour* 61(2):379–390 DOI 10.1006/anbe.2000.1592.
- Silveira L, Jácomo ATA, Diniz-Filho JAF. 2003. Camera trap, line transect census and track surveys: a comparative evaluation. *Biological Conservation* 114(3):351–355 DOI 10.1016/s0006-3207(03)00063-6.
- Stewart PD, Ellwood SA, Macdonald DW. 1997. Remote video-surveillance of wildlife—an introduction from experience with the European badger *Meles meles*. *Mammal Review* 27(4):185–204 DOI 10.1111/j.1365-2907.1997.tb00448.x.
- Swann DE, Hass CC, Dalton DC, Wolf SA. 2004. Infrared-triggered cameras for detecting wildlife: an evaluation and review. *Wildlife Society Bulletin* 32(2):357–365 DOI 10.2193/0091-7648(2004)32[357:icfdwa]2.0.co;2.
- Swanson A, Kosmala M, Lintott C, Simpson R, Smith A, Packer C. 2015. Snapshot Serengeti, high-frequency annotated camera trap images of 40 mammalian species in an African savanna. *Scientific Data* 2:150026 DOI 10.1038/sdata.2015.26.
- Theuerkauf J, Jędrzejewski W, Schmidt K, Okarma H, Ruczyński I, Śnieżko S, Gula R. 2003. Daily patterns and duration of wolf activity in the Białowieża Forest, Poland. *Journal of Mammalogy* 84(1):243–253 DOI 10.1644/1545-1542(2003)084<0243:dpadow>2.0.co;2.
- Thompson DC. 1977. Diurnal and seasonal activity of the grey squirrel (*Sciurus carolinensis*). *Canadian Journal of Zoology* 55(7):1185–1189 DOI 10.1139/z77-153.
- Thompson PM, Fedak MA, McConnell BJ, Nicholas KS. 1989. Seasonal and sex-related variation in the activity patterns of common seals (*Phoca vitulina*). *Journal of Applied Ecology* 26(2):521–535 DOI 10.2307/2404078.
- Tobler MW, Carrillo-Percestequi SE, Leite Pitman R, Mares R, Powell G. 2008a. An evaluation of camera traps for inventorying large- and medium-sized terrestrial rainforest mammals. *Animal Conservation* 11(3):169–178 DOI 10.1111/j.1469-1795.2008.00169.x.
- Tobler MW, Carrillo-Percestequi SE, Leite Pitman R, Mares R, Powell G. 2008b. Further notes on the analysis of mammal inventory data collected with camera traps. *Animal Conservation* 11(3):187–189 DOI 10.1111/j.1469-1795.2008.00181.x.
- Tonkin JM. 1983. Activity patterns of the Red squirrel (*Sciurus vulgaris*). *Mammal Review* 13(2–4):99–111 DOI 10.1111/j.1365-2907.1983.tb00271.x.
- Torre I, Guixé D, Sort F. 2010. Comparing three live trapping methods for small mammal sampling in cultivated areas of NE Spain. *Italian Journal of Mammalogy* 21:147–155.

- Trolle M, Kéry M. 2003.** Estimation of ocelot density in the Pantanal using capture–recapture analysis of camera-trapping data. *Journal of Mammalogy* **84**(2):607–614  
DOI [10.1644/1545-1542\(2003\)084<0607:eoodit>2.0.co;2](https://doi.org/10.1644/1545-1542(2003)084<0607:eoodit>2.0.co;2).
- Van Doormaal N, Ohashi H, Koike S, Kaji K. 2015.** Influence of human activities on the activity patterns of Japanese sika deer (*Cervus nippon*) and wild boar (*Sus scrofa*) in Central Japan. *European Journal of Wildlife Research* **61**(4):517–527 DOI [10.1007/s10344-015-0922-8](https://doi.org/10.1007/s10344-015-0922-8).
- Wang Y, Allen ML, Wilmers CC. 2015.** Mesopredator spatial and temporal responses to large predators and human development in the Santa Cruz Mountains of California. *Biological Conservation* **190**:23–33 DOI [10.1016/j.biocon.2015.05.007](https://doi.org/10.1016/j.biocon.2015.05.007).
- Wauters LA, Dhondt AA. 1987.** Activity budget and foraging behaviour of the red squirrel (*Sciurus vulgaris*, Linnaeus, 1758) in a coniferous habitat. *Zeitschrift für Säugetierkunde* **52**:341–353.
- Wauters L, Swinnen C, Dhondt AA. 1992.** Activity budget and foraging behaviour of red squirrels (*Sciurus vulgaris*) in coniferous and deciduous habitats. *Journal of Zoology* **227**(1):71–86  
DOI [10.1111/j.1469-7998.1992.tb04345.x](https://doi.org/10.1111/j.1469-7998.1992.tb04345.x).
- Webbon CC, Baker PJ, Cole NC, Harris S. 2006.** Macroscopic prey remains in the winter diet of foxes *Vulpes vulpes* in rural Britain. *Mammal Review* **36**(1):85–97  
DOI [10.1111/j.1365-2907.2006.00069.x](https://doi.org/10.1111/j.1365-2907.2006.00069.x).
- Weckel M, Giuliano W, Silver S. 2006.** Jaguar (*Panthera onca*) feeding ecology: distribution of predator and prey through time and space. *Journal of Zoology* **270**(1):25–30  
DOI [10.1111/j.1469-7998.2006.00106.x](https://doi.org/10.1111/j.1469-7998.2006.00106.x).
- Wilson CD, Arnott G, Reid N, Roberts D. 2011.** The pitfall with PIT tags: marking freshwater bivalves for translocation induces short-term behavioural costs. *Animal Behaviour* **81**(1):341–346 DOI [10.1016/j.anbehav.2010.10.003](https://doi.org/10.1016/j.anbehav.2010.10.003).
- Wolton RJ. 1983.** The activity of free-ranging wood mice *Apodemus sylvaticus*. *Journal of Animal Ecology* **52**(3):781–794 DOI [10.2307/4453](https://doi.org/10.2307/4453).
- Zalewski A. 2007.** Does size dimorphism reduce competition between sexes? The diet of male and female pine martens at local and wider geographical scales. *Acta Theriologica* **52**(3):237–250  
DOI [10.1007/bf03194220](https://doi.org/10.1007/bf03194220).
- Zielinski WJ, Spencer WD, Barrett RH. 1983.** Relationship between food habits and activity patterns of pine martens. *Journal of Mammalogy* **64**(3):387–396 DOI [10.2307/1380351](https://doi.org/10.2307/1380351).
- Zub K, Fletcher QE, Szafrńska PA, Konarzewski M. 2013.** Male weasels decrease activity and energy expenditure in response to high ambient temperatures. *PLOS ONE* **8**(8):e72646  
DOI [10.1371/journal.pone.0072646](https://doi.org/10.1371/journal.pone.0072646).