



## RESEARCH ARTICLE

# Rapid transcriptional responses to serum exposure are associated with sensitivity and resistance to antibody-mediated complement killing in invasive *Salmonella* Typhimurium ST313 [version 1; peer review: 2 approved]

Edna M. Ondari <sup>1-4</sup>, Elizabeth J. Klemm<sup>4</sup>, Chisomo L. Msefula <sup>4-6</sup>, Moataz Abd El Ghany<sup>4,7,8</sup>, Jennifer N. Heath<sup>9</sup>, Derek J. Pickard<sup>4</sup>, Lars Barquist <sup>4,10,11</sup>, Gordon Dougan<sup>4,12</sup>, Robert A. Kingsley<sup>13\*</sup>, Calman A. MacLennan<sup>9,14\*</sup>

<sup>1</sup>Swiss Tropical and Public Health Institute, University of Basel, Basel, Switzerland

<sup>2</sup>University of Basel, Basel, Switzerland

<sup>3</sup>Novartis Vaccines Institute for Global Health, Siena, Italy

<sup>4</sup>Wellcome Trust Sanger Institute, Hinxton, UK

<sup>5</sup>Malawi-Liverpool-Wellcome Trust Clinical Research Institute, Blantyre, Malawi

<sup>6</sup>Department of Microbiology, College of Medicine, University of Malawi, Blantyre, Malawi

<sup>7</sup>The Westmead Institute for Medical Research and Marie Bashir Institute for Infectious Diseases and Biosecurity, University of Sydney, Westmead, Australia

<sup>8</sup>King Abdullah University of Science and Technology, Thuwal, Saudi Arabia

<sup>9</sup>Institute of Immunology and Immunotherapy, University of Birmingham, Birmingham, UK

<sup>10</sup>Helmholtz Institute for RNA-based Infection Research, Würzburg, Germany

<sup>11</sup>Faculty of Medicine, University of Würzburg, Würzburg, Germany

<sup>12</sup>Department of Medicine, University of Cambridge Addenbrooke's Hospital Cambridge, Cambridge, UK

<sup>13</sup>Quadram Institute Bioscience, Norwich, UK

<sup>14</sup>Jenner Institute, Nuffield Department of Medicine, University of Oxford, Oxford, UK

\* Equal contributors

**V1** First published: 25 Apr 2019, 4:74 (<https://doi.org/10.12688/wellcomeopenres.15059.1>)

Latest published: 25 Apr 2019, 4:74 (<https://doi.org/10.12688/wellcomeopenres.15059.1>)

## Abstract

**Background:** *Salmonella* Typhimurium ST313 exhibits signatures of adaptation to invasive human infection, including higher resistance to humoral immune responses than gastrointestinal isolates. Full resistance to antibody-mediated complement killing (serum resistance) among nontyphoidal *Salmonellae* is uncommon, but selection of highly resistant strains could compromise vaccine-induced antibody immunity. Here, we address the hypothesis that serum resistance is due to a distinct genotype or transcriptome response in *S. Typhimurium* ST313.

**Methods:** Six *S. Typhimurium* ST313 bloodstream isolates, three of which were antibody resistant, were studied. Genomic content (single nucleotide polymorphisms and larger chromosomal modifications) of the strains was

## Open Peer Review

Reviewer Status

	Invited Reviewers	
	1	2
version 1 published 25 Apr 2019	 report	 report

1 **Manuela Raffatellu** , University of California San Diego, La Jolla, USA

determined by Illumina and PACBIO sequencing, and functionally characterized using RNA-seq, transposon directed insertion site sequencing (TraDIS), targeted gene deletion and transfer of selected point mutations in an attempt to identify features associated with serum resistance.

**Results:** Sequence polymorphisms in genes from strains with atypical serum susceptibility when transferred from strains that were highly resistant or susceptible to a strain that exhibited intermediate susceptibility did not significantly alter serum killing phenotype. No large chromosomal modifications typified serum resistance or susceptibility. Genes required for resistance to serum identified by TraDIS and RNA-seq included those involved in exopolysaccharide synthesis, iron scavenging and metabolism. Most of the down-regulated genes were associated with membrane proteins. Resistant and susceptible strains had distinct transcriptional responses to serum, particularly related to genes responsible for polysaccharide biosynthesis. There was higher upregulation of *wca* locus genes, involved in the biosynthesis of colanic acid exopolysaccharide, in susceptible strains and increased expression of *fepE*, a regulator of very long-chain lipopolysaccharide in resistant strains.

**Conclusion:** Clinical isolates of *S. Typhimurium* ST313 exhibit distinct antibody susceptibility phenotypes that may be associated with changes in gene expression on exposure to serum.

### Keywords

Invasive salmonellosis, serum resistance, antibody, complement, genome, transcriptome

2 **Mark A. Schembri**, The University of Queensland, Brisbane, Australia

Any reports and responses or comments on the article can be found at the end of the article.

**Corresponding author:** Calman A. MacLennan ([calman.maclennan@ndm.ox.ac.uk](mailto:calman.maclennan@ndm.ox.ac.uk))

**Author roles:** **Ondari EM:** Conceptualization, Formal Analysis, Investigation, Validation, Writing – Original Draft Preparation, Writing – Review & Editing; **Klemm EJ:** Conceptualization, Formal Analysis, Methodology, Validation, Writing – Original Draft Preparation, Writing – Review & Editing; **Msefula CL:** Conceptualization, Investigation, Writing – Review & Editing; **Ei Ghany MA:** Formal Analysis, Investigation, Writing – Review & Editing; **Heath JN:** Investigation, Writing – Review & Editing; **Pickard DJ:** Investigation, Writing – Review & Editing; **Barquist L:** Formal Analysis, Software, Writing – Review & Editing; **Dougan G:** Conceptualization, Funding Acquisition, Methodology, Supervision, Validation, Writing – Review & Editing; **Kingsley RA:** Conceptualization, Formal Analysis, Funding Acquisition, Investigation, Methodology, Supervision, Validation, Writing – Review & Editing; **MacLennan CA:** Conceptualization, Funding Acquisition, Methodology, Supervision, Validation, Writing – Original Draft Preparation, Writing – Review & Editing

**Competing interests:** EMO and CAMaCL are former employees of Novartis Vaccines Institute for Global Health (under ownership of GlaxoSmithKline at the time of data analysis and writing). CAMaCL has been the recipient of a Clinical Research Fellowship from GlaxoSmithKline.

**Grant information:** This work was supported by the Wellcome Trust [098051]. This research was supported by the European Community's Seventh Framework Programme [FP7/2007-2013] Industry and Academia Partnerships and Pathways award [251522] GENDRIVAX (Genome-Driven Vaccine Development for Bacterial Infections), through collaboration between the Novartis Vaccines Institute for Global Health, Wellcome Trust Sanger Institute, Swiss Tropical and Public Health Institute and the Kenya Medical Research Institute. Work at the Wellcome Trust Sanger Institute was supported by the Wellcome Trust [098051]. Work at the Quadram Institute was supported by BBSRC [BB/R012504/1]. GD was supported by Wellcome and the Cambridge BRC AMR theme.

*The funders had no role in study design, data collection and analysis, decision to publish, or preparation of the manuscript.*

**Copyright:** © 2019 Ondari EM *et al.* This is an open access article distributed under the terms of the [Creative Commons Attribution Licence](https://creativecommons.org/licenses/by/4.0/), which permits unrestricted use, distribution, and reproduction in any medium, provided the original work is properly cited.

**How to cite this article:** Ondari EM, Klemm EJ, Msefula CL *et al.* **Rapid transcriptional responses to serum exposure are associated with sensitivity and resistance to antibody-mediated complement killing in invasive *Salmonella* Typhimurium ST313 [version 1; peer review: 2 approved]** Wellcome Open Research 2019, 4:74 (<https://doi.org/10.12688/wellcomeopenres.15059.1>)

**First published:** 25 Apr 2019, 4:74 (<https://doi.org/10.12688/wellcomeopenres.15059.1>)

## Introduction

Invasive nontyphoidal *Salmonella* (iNTS) infections are estimated to cause ~3.4 million illnesses and over 680,000 deaths annually<sup>1</sup>, with a majority of these cases occurring in sub-Saharan Africa<sup>1,2</sup>. Predisposing factors include co-morbidities such as malaria<sup>3–6</sup>, HIV co-infection<sup>7–9</sup>, young age<sup>10,11</sup>, and malnutrition<sup>12–14</sup>. A clonal genotype of *Salmonella enterica* serovar Typhimurium (*S. Typhimurium*) of sequence type 313 (ST313)<sup>15</sup>, dominates iNTS disease in sub-Saharan Africa and this clone frequently encodes multiple drug resistance<sup>16–21</sup>. These factors likely contribute to the relatively high prevalence of invasive disease in the region compared to that observed with nontyphoidal *Salmonella* in other parts of the world, where gastroenteritis dominates.

A prominent signature in the genomes *S. Typhimurium* ST313 isolates is genetic degradation, associated with gene deletion and the accumulation of pseudogenes, resembling that observed in host-restricted *Salmonella* serovars such as *S. Typhi*, the causative agent of typhoid fever<sup>15</sup>. Nevertheless, the ST313 found in Africa are monophyletic, falling into two highly conserved clades known as clades or lineages I and II<sup>15</sup>. Phenotypically, ST313 isolates of both clades broadly exhibit decreased enteropathogenicity<sup>16,22</sup>, hyper-dissemination from the intestine<sup>23</sup>, hyper-resistance to phagocytic killing<sup>24</sup> and complement<sup>20,25</sup>, and altered multicellular behaviour<sup>17</sup>.

The predilection for invasive disease exhibited by ST313 underscores an important role for an effective humoral response to NTS during extra-intestinal infection<sup>11,26</sup>. Antibodies mediate opsonisation and killing by phagocytic cells<sup>26</sup>, and direct bacterial killing by complement during inter-macrophage spread<sup>11</sup>. Vaccines eliciting these responses, therefore, are a potentially promising means of protecting individuals from developing iNTS disease.

Multiple, and possibly redundant mechanisms for evading antibody responses have been described for *Salmonella*. These include survival in phagocytes associated with virulence factors such as *Salmonella* Pathogenicity Island (SPI-2)<sup>27</sup>, and the production of proteins that actively degrade or inhibit complement proteins such as PgtE<sup>28,29</sup>, Rck<sup>30</sup>, PagC<sup>31</sup>, and TraT<sup>32</sup>. Recently, a SNP was identified in the promoter of *pgtE* resulting in high expression of the PgtE virulence factor in lineage II African ST313 *S. Typhimurium*. PgtE increases degradation of factor B component of human complement, likely contributing to serum resistance of the ST313 pathovar of *S. Typhimurium*<sup>20</sup>.

Lipopolysaccharide (LPS) O-antigen length and composition can also play a key role in bacterial survival during bloodstream infection, by shielding bacteria against direct complement attack and killing by blood phagocytes<sup>33–35</sup>. Subunit vaccines that can induce antibodies capable of directing complement-mediated killing are under development for the prevention of iNTS disease in sub-Saharan Africa<sup>36–40</sup>. The presence of variants that evade antibody-mediated killing conferred by a vaccine could undermine this strategy. Here we address the

hypothesis that variation in genotype or transcriptional response to serum of clinical isolates of iNTS correlates with serum susceptibility.

## Methods

**Bacteria and culture conditions.** Six *S. Typhimurium* from a series of 329 iNTS isolates from bacteraemic children admitted to Queen Elizabeth Central Hospital, Blantyre, Malawi with defined susceptibility to complement-mediated bactericidal activity were used in this study. Bacteria were routinely maintained in normal (10 g/l) or low salt (5 g/l) Luria-Bertani broth (Invitrogen, catalogue numbers 12795027 and 12780052 respectively) and grown aerobically at 37°C. Where appropriate, derivative mutant strains were grown in LB media supplemented with 100 µg/ml of hygromycin, or 50 µg/ml of kanamycin (Sigma-Aldrich, catalogue numbers 10687010 and 11815032 respectively).

**Investigation of the stability of the serum susceptibility phenotype.** Suspensions of two isolates, D23005 (serum resistant) and D24545 (highly serum sensitive) were spread on Luria-Bertani (LB) agar plates at a density of approximately 500 cfu and grown overnight. 100 colonies of each isolate were then grown to log phase in LB broth and exposed to serum for three hours. Serum susceptibility phenotype was then determined using serum bactericidal assays (described below).

**Identification of single nucleotide polymorphisms.** Sequence read alignment and detection of single nucleotide polymorphisms (SNP's) were performed using paired-end Illumina sequence data mapped to the reference genomes *S. Typhimurium* D23580 and SL1344 with SMALT. SNPs were identified using samtools mpileup v0.2.0 and filtered with a minimum mapping quality of 30 and quality ratio cut-off of 0.75.

**Transfer of point mutations by transduction.** Nonsynonymous polymorphisms were transferred into *S. Typhimurium* D23580 by co-transduction with a selectable marker. A kanamycin resistance cassette was inserted into intergenic regions within 1kb of each selected point mutation in the donor strains by homologous recombination as described previously<sup>41</sup>, using primers designed to avoid disrupting gene promoters (Table S1, Extended data<sup>42</sup>). Phage P22 lysates of the resulting derivative strains were then used to infect D23580, using the kanamycin marker to select for transductants. Colonies were screened for the transfer of the desired allele using specific PCR oligonucleotide primers (Table S1, Extended data<sup>42</sup>) and confirmed by sequencing.

**Serum bactericidal assays.** Normal human serum was obtained from the blood of a healthy adult donor. Clotting was performed at room temperature within two hours of the blood draw. Serum was then separated from the clotted fraction by centrifugation and stored in aliquots at -80°C until use. Test *S. Typhimurium* strains were grown to mid-log phase by inoculating 100-fold dilutions of overnight cultures into fresh LB broth and grown aerobically for 135 minutes at 37°C. The bacteria were then washed twice with phosphate-buffered saline (PBS), and approximately 1×10<sup>6</sup> cfu/ml were incubated with serum for 3 hours at

37°C. Serum susceptibility was determined by the change in numbers of viable bacteria after 3 hours of serum exposure, using serial dilutions of the serum-bacteria mixtures plated on LB agar.

#### Transposon mutant library construction and screening.

A derivative of the transposon EZ-Tn5 (Epicentre, Catalogue number MOD1503) was phosphorylated with polynucleotide kinase (New England BioLabs Inc.), and incubated with EZ-Tn5 transposases (Epicentre, catalogue number TNP92110) at 37°C for 1 hour to prepare the transposome, which was stored at -20°C until ready for use. D23580 electrocompetent cells were mixed with 0.5 µL of transposomes and transformed by electroporation in a 0.2 cm cuvette (Bio-Rad Laboratories) using parameters (2.5 kV, 25 F and 200 Ω) in Gene Pulser Xcell Electroporation System (Bio-Rad Laboratories). Cells were immediately re-suspended in 1 mL of SOC medium (Invitrogen, catalogue number 1554034) and incubated at 37°C for 2 hr before being spread on LB agar supplemented with kanamycin (10 µg/mL). The D23580 library consisted of 6×10<sup>5</sup> mutants. Stationary phase cultures were then prepared by 1/200 dilution of mutant library in LB broth, vortexed briefly, and incubated aerobically at 37°C overnight with shaking. Log phase cultures (input library) were then prepared by 1/100 dilution of the overnight culture in LB broth and 2.5 hours of incubation at 37°C (without venting), on a rocker plate at 20 rev/sec. Viable counts of the input library were determined by serial dilution in PBS and plating of a sample of the neat input culture. An aliquot of the input library was harvested by centrifugation at 6000 rpm for 5 minutes. The supernatant was decanted, and the pellet washed three times in PBS (pH 7.4), then resuspended in PBS to a final concentration of 1×10<sup>8</sup>/ml bacteria. Serum bactericidal assays were performed as described above but using pooled serum from 10 healthy Malawian adults. After 180 minutes, the entire serum-bacteria suspension was transferred to 25 ml LB broth, vortexed and incubated overnight aerobically 37°C, to enable the surviving library to outgrow killed components. Viable counts were determined from the output library, and the remaining output culture pelleted at 6000 rpm for 20 minutes at 4°C, the supernatant removed, and frozen at -80°C until ready for use.

#### Transposon directed insertion site sequencing (TraDIS).

Genomic DNA (gDNA) of the initial (input) and selected (output) mutant pools was extracted using Qiagen Genomic-tip 100/G (Qiagen, Hilden, Germany, catalogue number 10043). Approximately 2µg of gDNA was fragmented to insert size of ~300 bp using E220 Evolution Somicator (Covaris). The fragmented DNA was end repaired, A-tailed and adapter-ligated using Illumina DNA fragment library preparation kit (New England BioLabs Inc., catalogue number E6177) according to the manufacturer's instructions. The libraries were then enriched by 10-20 PCR cycles using a transposon-specific forward primer and a reverse primer that included Illumina flow cell binding sites as described previously<sup>43</sup>. The enriched libraries were purified using the Agen court AMPure XP beads (Beckman Coulter, catalogue number A63882) and quantified on an Agilent DNA1000 chip (Agilent Technologies, Catalogue number 5067-1504) as per the manufacturer's instructions. The

libraries were sequenced on a HiSeq2000 Illumina platform as single-end reads of 100bp. The reads were processed using the [Bio::TraDIS toolkit v1.132190](#)<sup>44</sup>. Briefly, reads were filtered for 10 bases matching the expected transposon tag sequence. Filtered reads were then mapped against D23580 reference genome (GenBank accession number [FN424405](#)) using [SMALT](#) version 0.7.2, and transposon insertion sites and insertion indices (obtained by dividing the number of unique insertion sites by the gene length) were determined for every gene. Genes with read counts of less than 20 in all conditions were excluded from the analysis. Log<sub>2</sub> fold changes and significance of changes in mutant abundance before (input; the basic mutant pool) and after selection (output; biological replicates of mutant pool screened in the presence of bactericidal serum) were calculated using [edgeR v3.4.0](#) after normalization using TMM method<sup>45</sup>.

**Targeted gene deletion in D23580.** Deletion of genes in *S. Typhimurium* D23580 was performed by recombinase-mediated allelic exchange as described previously<sup>41</sup>. PCR fragments were made by amplifying the kanamycin resistance gene from plasmid pKD4, with each primer consisting of 50-mer homology arms flanking each targeted gene such that the entire open reading frame was deleted, and 20 nucleotides priming pKD4 at the 3'ends (primers in Table S1, Extended data<sup>42</sup>). A second round of PCR using gel-purified products from the first reactions as templates was performed to eliminate pKD4 from the material used for electroporation. Recombinase-proficient D23580 bacteria harbouring the pSIM18 helper plasmid were transformed using approximately 1 µg of PCR product. Transformants were then selected on LB plates with kanamycin, and the gene replacement verified by screening colonies using PCR from extracted genomic DNA and primers specified in Table S1 (Extended data<sup>42</sup>). Culture of transformants at 42°C (non-permissive temperature for pSIM18 replication), and isolation of kanamycin resistant and hygromycin sensitive colonies by replica plating was used to cure and verify loss of pSIM18.

**PacBio sequencing and assembly.** To prepare high molecular weight genomic DNA, log-phase cultures of each strain were prepared in 10 ml of LB broth as described above. Each culture was then centrifuged and the pellets resuspended in 2 ml of 25% (w/v) sucrose in TE buffer (10 mM Tris, 1 mM EDTA, pH 8.0). 5 mg of lysozyme (Roche, catalogue number 10837059001) was then added to each suspension, and incubated for 45 minutes at 37°C. 2 mg of proteinase K (Roche, catalogue number P4850), 300 µg of RNase A (Roche, catalogue number 10109169001), EDTA (pH 8.0) at a final concentration of 0.02 M, and 250 µl of 10% Sarkosyl NL30 (BDH/Fisher, catalogue number BP234-500) were added to the suspensions, then left on ice for 2 hours. Lysates were placed on a 50°C block overnight, then reconstituted to 5 ml using TE buffer. Samples were mixed with an equal volume of phenol:chloroform:isoamyl alcohol (25:24:1) in 15 ml phase-lock gel tubes (Eppendorf, catalogue number 0032005250), centrifuged for 15 minutes at 4000rpm, and the aqueous phases transferred to a fresh tube, and repeated three times. The aqueous phase was mixed with 2.5 volumes of 100% ethanol and incubated at -20°C for 1 hour

to precipitate the DNA. The DNA was separated from the ethanol by centrifugation, washed with 70% ethanol, resuspended in TE buffer, and stored at -80°C until use.

PacBio sequencing was performed on a PacBio RS sequencer. Sequence reads were assembled using [HGAP v3](#)<sup>46</sup> of the [SMRT-Analysis](#) software v2.3.0<sup>47</sup>. Sequence coverage for picking the minimum fragment length for assembly was set to 30, and the approximate genome size was set to 3 Mbp. The assembly was circularized using the pre-assembled reads in [Circlator](#) v1.1.3<sup>48</sup>. The circularized assembly was then improved using the PacBio RS\_Resequencing protocol and Quiver v1 of the SMRT analysis software v2.3.0<sup>47</sup>.

**RNA sequence analysis.** Log-phase ( $OD_{600}$  0.2, determined using an Ultrospec 10 spectrophotometer, Amersham Biosciences) cultures of each strain were prepared in 10 ml of LB broth as described previously. Bacteria were resuspended to an  $OD_{600}$  of 2.0. 100  $\mu$ l of this suspension was then inoculated into 900  $\mu$ l of LB and 900  $\mu$ l of normal human serum (to a final concentration of approximately  $10^8$  cfu/ml) in 2ml microcentrifuge tubes. The tubes were incubated in a horizontal position with shaking at 60rpm at 37°C for 10 minutes, after which the bacteria were pelleted by centrifuging at 13000 rpm for 2 minutes, and the media/serum discarded. The pellets were resuspended in 1ml of ice-cold PBS. RNA was immediately stabilized as described previously<sup>49</sup>, by adding 400 $\mu$ l (20%v/v) of a cold mixture of 100% ethanol and phenol saturated with 0.1 M citrate buffer at pH 4.3 (Sigma, catalogue number P4862) (19:1 v/v) to each sample and incubating on ice for 30 minutes. Extractions were performed using the FastRNA Pro Blue Kit (MP Biomedicals, catalogue number 116025050) according to the manufacturer's protocol. Genomic DNA was removed from the samples using Turbo DNase (Ambion, catalogue number AM2238) with 4% v/v of RNaseq RNase Inactivation Reagent (Ambion, catalogue number AM7005) added to each sample during DNase treatment to prevent RNA degradation. RNA was then purified using phenol-chloroform, with final elution in DEPC-treated water. Quality and concentration were checked by using a 2% agarose gel, and the Agilent 2100 Bioanalyzer RNA Nano protocol. Samples were then stored at -80°C until use. Extractions were performed in three biological replicates. RNA-seq was performed using an Illumina HiSeq 2000 sequencer, yielding 9-23 million reads per library from 100 cycles of paired-end sequencing (Sequencing and mapping statistics are in Table S2, Extended data<sup>42</sup>). Sequence reads from each sample were mapped against the *S. Typhimurium* D23580 genome (Genbank accession number: [FN424405](#)). The reference was indexed, and the reads aligned using default parameters, with read trimming quality threshold set to 15 ( $q=15$ ) and maximum insert size adjusted per library as the maximum requested fragment size of the sequencing library, implemented using [BWA](#) v0.7.12<sup>50</sup>. Expression values were computed from the read alignments to the coding sequence to generate the number of reads mapping<sup>51,52</sup>, including only reads with a mapping quality score of 10. Output spreadsheet files with features previously described<sup>53</sup> were obtained for each sample. Total read counts for each gene in every sample were used, with zero values in the

data thresholded to 1. Principal Component Analysis (PCA) plots of normalized counts were used to identify samples that did not cluster with their replicates, and one sample (run accession ERR731338) was excluded from subsequent analysis. Data normalization, filtering, and calculation of fold changes were performed using [DESeq2](#) (v.1.4.5)<sup>54</sup>, and heatmaps and cluster dendrograms created using the [heatmap.2](#) function of the [gplots](#) package (v.2.13.0), all implemented in [R](#) v.3.1.3.

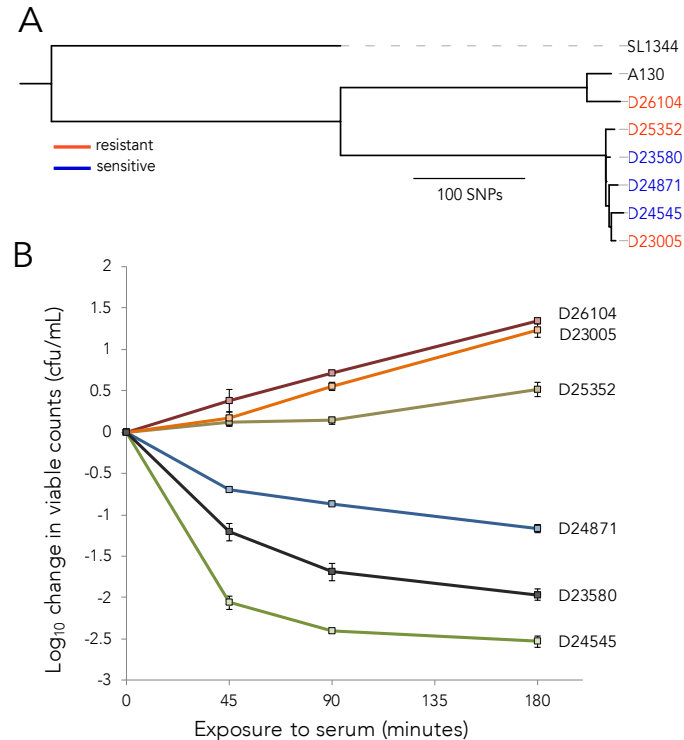
**Sequencing data accession number.** The RNA-seq and PacBio data generated in this study were submitted to the European Nucleotide Archive, available under study accession number [ERP005455](#).

**Ethical approval.** Ethical approval was from the College of Medicine Research and Ethics Committee, University of Malawi (Protocol Number P.05/06/388). Peripheral blood samples were obtained following written informed consent from each donor.

## Results

**S. Typhimurium isolates exhibit a stably inherited serum susceptibility phenotype.** We have noted that even phylogenetically highly related ST313, that vary by only a few SNPs, can exhibit reproducible differences in their resistance to serum killing. Thus, in order to investigate this further we selected five isolates of lineage II (D23580, D24545, D23005, D25352, D24871) and two (A130 (a reference isolate), D26104) of lineage I with different serum susceptibilities for detailed genotypic or phenotypic analysis. Two of these isolates, D23580 and D24871, were moderately susceptible to killing in normal serum. One isolate, D24545, was highly susceptible, while the other three had net growth after three hours of incubation in the same immune serum ([Figure 1 A and B](#)). To investigate if serum susceptibility was a stably inherited phenotype during culture, we performed serum killing assays on 100 independent colonies each of a serum resistant (D23005) and susceptible (D24545) isolate. No obvious differences in phenotype for either isolate was observed ([Figure S1, Extended data](#)<sup>42</sup>), therefore high frequency changes were considered unlikely to account for the observed variation in serum sensitivity.

**Complete genome analysis of the iNTS isolates with different serum susceptibility.** The genetic basis for variation in serum susceptibility between ST313 isolates is unknown. Therefore, to facilitate detailed genetic comparisons, we determined the complete genome sequence of each isolate using a combination of Illumina-generated short reads and PacBio long-read sequences<sup>55</sup>. No major alterations in chromosome arrangement were apparent in any isolate using D23580 as the reference ([Figure S2A \(Extended data](#)<sup>42</sup>) and [2B](#)). For example, there were no large chromosomal inversions and no major deletions involving multiple or single genes. The *traT* and *rck* genes, two known serum resistance genes, were both intact and had 100% sequence identity in all the six isolates. Similarly, no difference, other than single SNPs were found in the 88kb p14-95A plasmid between D23580 and other isolates was observed ([Figure S2C, Extended data](#)<sup>42</sup>). Differences between ST313 clade I and



**Figure 1. Characteristics of the six NTS isolates.** **A.** Phylogenetic tree representing the relationships between the six NTS isolates studied. **B.** Fold change in bacterial counts following 3 hours of exposure to immune serum from a healthy adult donor. Each isolate was incubated at 37°C for 180 minutes with sampling at 45, 90 and 180 minutes. Data represent mean  $\pm$  standard error of two independent experiments, performed in triplicate.

isolates from clade II reflected lineage-specific genome evolution reported previously<sup>56</sup> (Figure 1) (Figure S2, Extended data<sup>42</sup>). We therefore concluded that gene flux and major genome rearrangements do not obviously correlate with serum susceptibility phenotype.

To investigate whether nucleotide substitutions (SNPs) or small indels impact the degree of susceptibility to serum killing, SNPs in gene coding and promoter regions were analysed in five lineage II isolates with D23580 as the reference (Figure 1A). A total of 52 SNPs were identified (Table S3, Extended data<sup>42</sup>), confirming the high genetic similarity. Of these, 13 SNPs resulted in predicted nonsynonymous amino acid substitutions that were unique to either the highly sensitive (D24545) or one of two resistant isolates (D25352 and D23005) (Table 1).

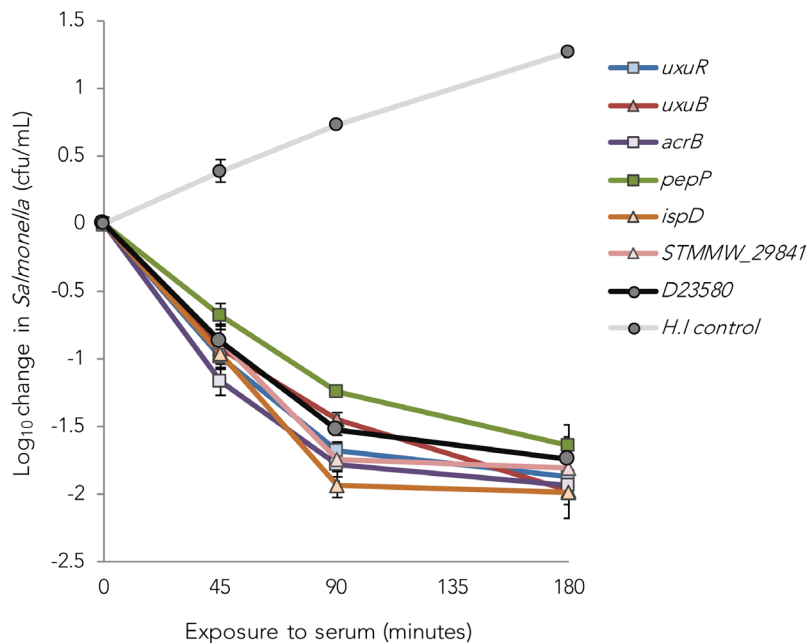
We tested whether these individual nonsynonymous SNPs accounted for the altered serum susceptibility phenotype by introducing them into D23580. Three of the SNPs (in *acrB*, *uxuR*, and *pepP*) were specific to D24545 which is highly susceptible to serum killing and three were present in resistant isolates D25352 or D23005 (*uxuB*, *ispD*, and *STMMW\_2984I*). All of the recombinant D23580 derivatives exhibited similar sensitivity to wild type D23580 at all sampled time points, indicating that these polymorphisms had no detectable impact on serum susceptibility (Figure 2).

For functional analysis of the 52 SNPs occurring in clade II isolates, we compared RNA-seq and TraDIS data corresponding to the regions where these SNPs occur. No significant changes, either in the viability of the corresponding transposon mutants or on the relative levels of transcription were observed (Table S3, Extended data<sup>42</sup>). D26104, a lineage I isolate, had significantly diminished expression of *pgtE* when compared to reference isolate D23580, consistent with lacking the promoter mutation known to increase serum resistance in lineage II isolates<sup>20</sup> (Table S8, Extended data<sup>42</sup>). Despite this, D26104 is a highly serum resistant isolate, suggesting an alternative mechanism of resistance in this isolate that is unlikely to be associated with the *pgtE* gene.

**Identification of genes required for full serum resistance of *S. Typhimurium* D23580.** By a complementary approach, we identified genes required for serum resistant ST313 using a whole genome functional screen with a saturating Tn5 transposon insertion library in D23580. The number of Tn5 transposon insertion mutants in each gene before and after exposure to serum for 180 minutes was determined by transposon directed insertion site sequencing (TraDIS). We classified genes as ‘serum resistance determinants’ if their disruption resulted in decreased viability in serum and therefore under-representation at the final timepoint. Under-representation was determined by a reduction in mapped read counts (relative to the library prior to serum exposure) of at least 2-fold and with an adjusted p-value of <0.05 or less.

**Table 1. Polymorphisms occurring in clade II strains with atypical serum susceptibility.** Only SNPs occurring in gene-coding regions and unique to each strain/phenotype are included. SNPs from *acrB*, *pepP*, *ispD*, *uxuB*, *uxuR*, and *STMMW\_29841* genes were transferred to D23580 and tested for their impact on resistance or sensitivity to serum killing by normal human serum.

Position in D23580	Systematic Gene ID	Gene name	Description	D23580 base	SNP base	D24545 (highly sensitive)	D23005 (resistant)	D25352 (resistant)	AA CHANGE
570516	STMMW_05451	<i>acrB</i>	acriflavin resistance protein B	C	T	T	.	.	G796S
1200631	STMMW_11271	<i>agp</i>	glucose-1-phosphatase precursor, secreted	T	C	C	.	.	L322P
1264174	STMMW_11931	<i>rne</i>	ribonuclease E	G	T	T	.	.	R1062S
4277479	STMMW_40091	-	alcohol dehydrogenase	T	C	C	.	.	K78E
4390204	STMMW_41061	<i>rpoB</i>	DNA-directed RNA polymerase, beta-subunit	G	A	A	.	.	D516N
4783703	STMMW_44531	<i>uxuR</i>	uxu operon transcriptional regulator	G	A	A	.	.	W221STOP
3211805	STMMW_30181	<i>pepP</i>	proline aminopeptidase II	C	A	A	.	.	E79D
3064062	STMMW_28931	<i>ispD</i>	2-C-methyl-D-erythritol4-phosphate cytidyltransferase	G	T	.	T	.	R128W
3175291	STMMW_29841	-	probable amino acid transport protein	T	G	.	G	.	S255L
1947840	STMMW_18471	-	putative membrane protein	T	A	.	.	A	D181E
1875804	STMMW_17771	-	conserved hypothetical protein	G	A	.	.	A	R349W
1966357	STMMW_18691	<i>pykA</i>	pyruvate kinase A	G	A	.	.	A	G124S
3289745	STMMW_30961	<i>uxuB</i>	D-mannonate oxidoreductase	A	C	.	.	C	N361T



**Figure 2. Relative serum sensitivity of D23580-derived strains with nonsynonymous polymorphisms transferred from serum resistant (D23005 and D25352) and susceptible (D24545) *Salmonella Typhimurium* strains.** Each strain was exposed to immune human serum at 37°C for 180 minutes with sampling at 45, 90 and 180 minutes. Squares represent strains with alleles from D24545, triangles from the resistant strains. Data represent means of two independent experiments, performed in triplicate. Error bars: Standard Error. HI control: Heat-inactivated control (Wild-type D23580 exposed to heat-inactivated serum).

Similarly, we defined genes as ‘serum susceptibility determinants’ if their disruption resulted in increased viability in serum and therefore over-representation at the final timepoint. We identified 555 serum resistance determinants and 82 serum susceptibility determinants (Complete results in Table S4, Extended data<sup>42</sup>).

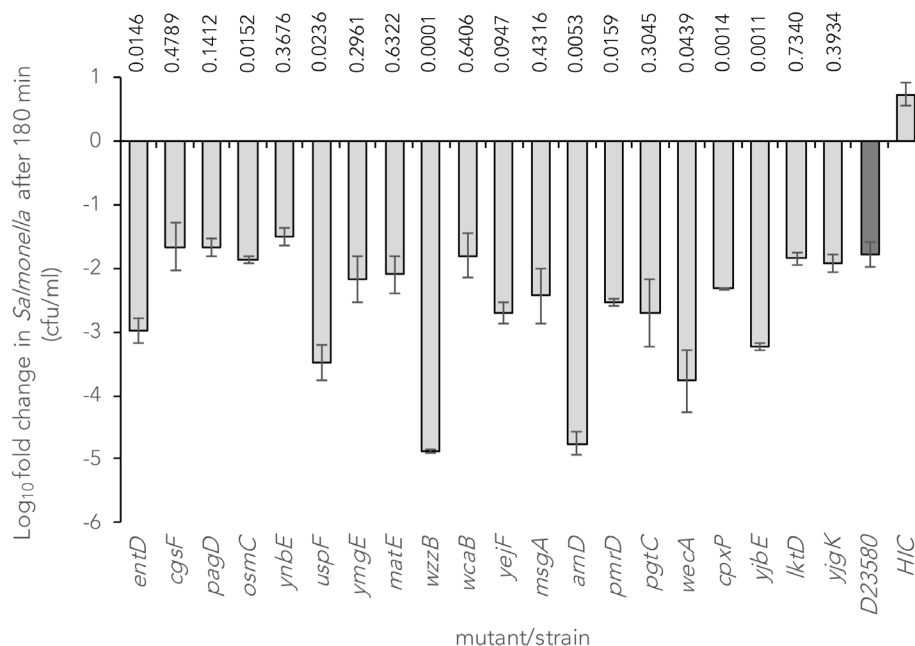
To validate the transposon insertion library screen, we constructed defined mutations in D23580 by independently replacing 20 of the serum-resistance determinants with the *aph* gene conferring kanamycin resistance, by allelic exchange. The deleted genes were from a broad range of functional categories. Nine of the mutants tested (*entD*, *osmC*, *uspF*, *wzzB*, *arnD*, *pmrD*, *wecA*, *cpxP* and *yjbE*) had significantly increased susceptibility to serum compared to wild-type D23580 (Figure 3).

Gene ontology (GO) terms associated with proteins encoded by serum-resistance determinants (Table S5) identified significant enrichment of membrane components, particularly genes responsible for membrane and extracellular polysaccharides such as lipopolysaccharide (LPS) and enterobacterial common antigen (ECA) synthesis (33 genes) (Figure 4). Also, genes involved in iron transport, iron ion binding, or iron-sulfur cluster assembly binding were significantly represented (30 genes total), consistent with the iron-limiting conditions of serum contributing to diminished bacterial viability (Figure 4, Table S5 (Extended data<sup>42</sup>)).

**Distinct transcriptional response is associated with serum susceptibility.** To investigate whether variation in gene

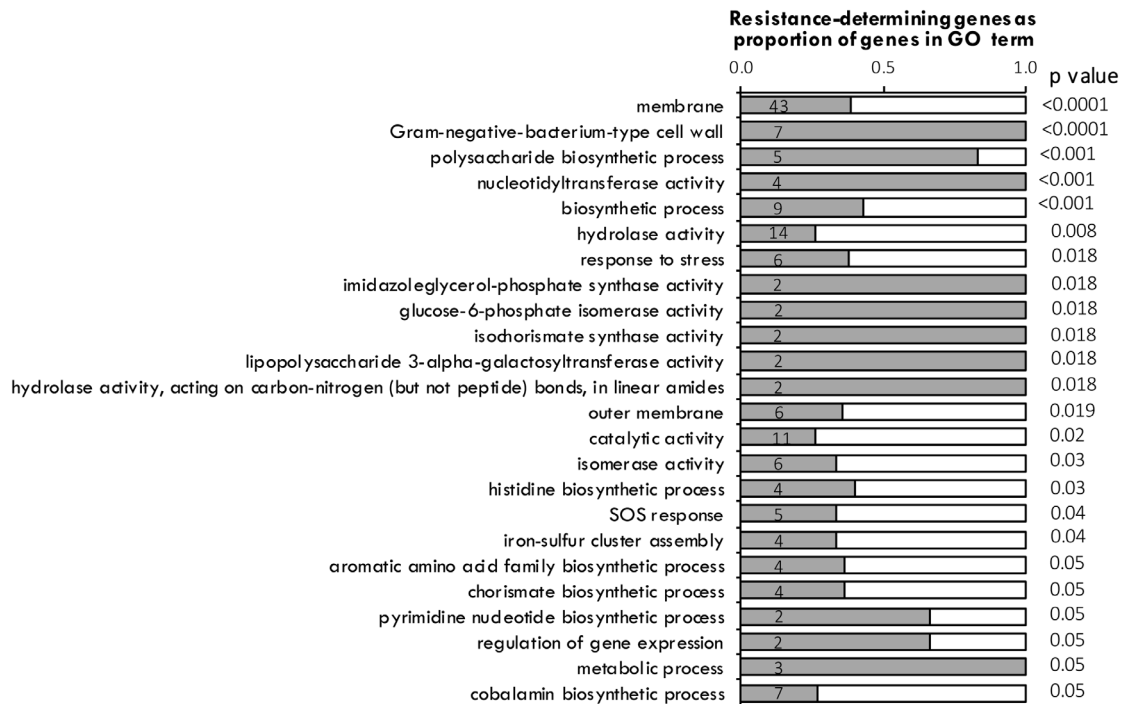
expression was associated with serum sensitivity in isolates with differential degrees of sensitivity, we analysed changes in transcription from bacteria exposed to normal human serum for 10 minutes relative to standard laboratory conditions (mid log culture in LB). This identified 170 genes as differentially expressed in all six isolates, 88 of which were up-regulated and 82 down-regulated (Tables S6, S7). A significant proportion (49%) of the up-regulated genes included ones involved in iron scavenging and iron-associated metabolism, including *fhu*, *ent*, *feh*, *suf*, *iro*, *exb*, *feo*, and the *sit* operon (Table S6, Extended data<sup>42</sup>). The second most abundant group (12.5%) consisted of genes involved in colanic acid biosynthesis, including the *rcaA* regulator (Table S6, Extended data<sup>42</sup>). A majority of the down-regulated genes (55%) were associated with the bacterial envelope (Table S7, Extended data<sup>42</sup>). Notably, *S. Typhimurium* serum resistance genes *rck*, *traT*, and *pgtE*<sup>20</sup>, were not significantly up-regulated in our experiments (Table S8, Extended data<sup>42</sup>).

We also identified transcriptional patterns that distinguished the isolates by serum susceptibility phenotype. Unsupervised clustering of the six *S. Typhimurium* strains based on the magnitude of change in expression for all chromosomal genes revealed a pattern that approximately grouped the isolates by relative serum sensitivity (Figure 5A). The transcriptional response to serum killing of D26104 and D23005 that had the greatest resistance to serum killing were most similar to one another, D25352, D24871 and D23580 that were moderately resistant or sensitive clustered, whilst the extremely susceptible strain D24545 had a distinct profile that was nonetheless most closely



**Figure 3. Susceptibility of D23580 mutants to the bactericidal activity of normal human serum relative to the wild-type strain.** Bars show the mean  $\log_{10}$  fold change  $\pm$  standard error of the mean in viable counts of twenty *S. Typhimurium* D23580 mutants following exposure to serum for 180 minutes. HIC: Heat-inactivated control (Wild-type D23580 exposed to heat-inactivated serum). P values above the bars represent t-test probabilities of pairwise comparisons of fold changes between each mutant strain and the wild-type strain.





**Figure 4. Significantly enriched gene ontology (GO) terms for 555 serum resistance-determining genes in D23580.** Genes included in the analysis were those whose corresponding mutants had a fold change of  $2^{-2}$  or lower from comparisons of input and output mutant libraries identified by TraDIS. P values are hypergeometric probabilities calculated using the *phyper* function in R. Comparisons were made using the number of genes associated with each term in the gene set versus the total number of genes associated with each term in the genome, using *Salmonella* Typhimurium LT2 GO annotation (<http://www.uniprot.org/proteomes/UP000001014>). Numbers within the bars represent the total number of genes in the essential gene set associated with each term.

related to other susceptible strains. Since both colanic acid and LPS polysaccharides are known to be associated with serum resistance in pathogenic Enterobacteria<sup>34,35,57</sup> we investigated the transcriptional profile genes involved in their biosynthesis in the six strains (Figure 5B and C). A modest level of clustering of resistant and susceptible strains was also observed for genes involved in colanic acid biosynthesis and to a greater degree LPS biosynthesis. Notably, despite significant induction of a majority of the *wca* locus genes in all the strains (Table S6, Extended data<sup>42</sup>), elevation of transcription of these genes was higher in serum susceptible than serum resistant strains (Figure 5B).

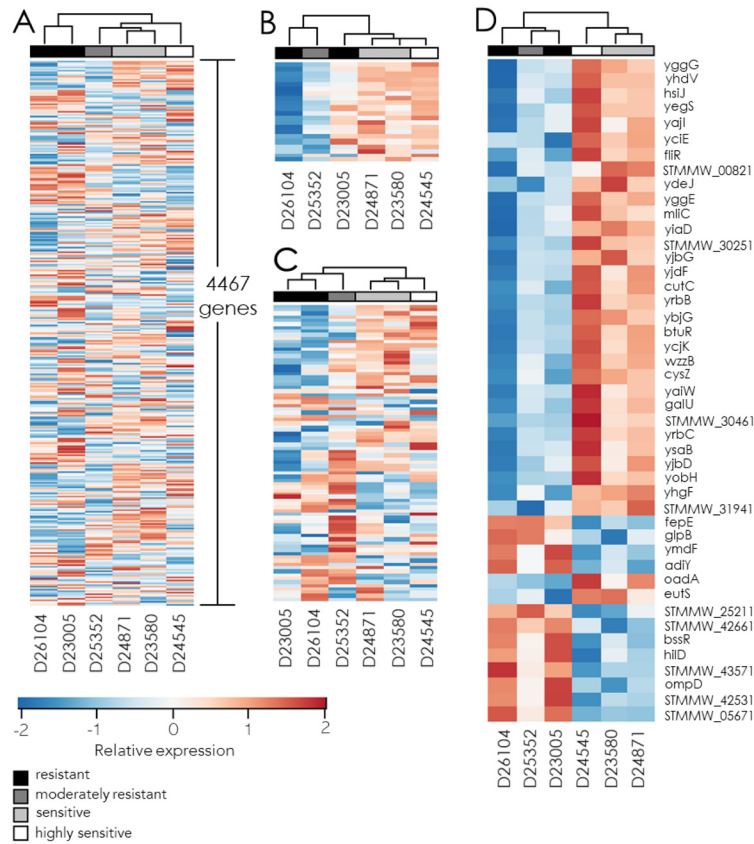
We also identified genes that exhibited a significant difference in mean expression greater than 2-fold in the three resistant strains compared to the three susceptible strains, ( $p < 0.05$ ). A total of 45 genes had a ratio of 2 or more from comparison of means of either group, most of which are associated with putative or uncharacterized proteins (Figure 5D). Genes more highly expressed in response to serum in sensitive compared with resistant strains included *yrbC*, *yiaD*, which is a putative outer membrane (*ompA*) family protein, *yibD*, which is expressed in response to phosphate starvation, *yggE*, an oxidative response protein, heat shock protein *hslJ*, homeostasis protein *cutC*, lysozyme inhibitor *mliC*, flagellar biosynthetic protein *fliR*,

metabolic proteins *eutS*, *btuR*, *galU* and *odaA*, *cysZ* transporter, *yjbG*, which increases resistance to bacitracin, and *yaiW*, a putative surface-exposed outer membrane lipoprotein. 12 genes were more highly up-regulated in response to serum in resistant compared with sensitive strains, and included *glpB*, porin protein *ompD*, *hilD*, a transcriptional regulator for multiple virulence genes, and *bssR*, which is induced in biofilms.

Notably, two LPS O-antigen genes, *wzzB* and *fepE* exhibited distinct responses to serum in resistant and susceptible strains. While the O-antigen polymerase *wzzB* was on average more highly up-regulated in serum-susceptible strains relative to serum-resistant ones, *fepE*, which modulates expression of very long O-antigen chains<sup>34</sup>, was on average 2-fold more highly expressed in serum-resistant strains than susceptible strains (Figure 5D).

## Discussion

*S. Typhimurium* ST313 isolates that are highly resistant to serum killing have been identified raising the possibility that these may be the basis of escape mutants capable of evading vaccine-mediated antibody and complement killing. To better understand this problem, we investigated the molecular basis of resistance to antibody-mediated complement killing among iNTS isolates. First, we analysed the genomic content of six bloodstream



**Figure 5. Relative gene expression in six invasive *Salmonella Typhimurium* strains in response to serum exposure.** Heat maps indicate  $\log_2$  fold changes in transcript abundance following a 10-minute growth in serum compared to log-phase cultures in LB. Patterns of transcriptional responses are clustered and their relationship indicated by dendrograms. The intensities of each cell colour represent the deviation (Z-score) of each strain from the average fold change (centered to zero, represented with white on the heatmap) per gene for higher (red) or lower (blue), for all chromosomal genes (A), genes in the *wca* (colanic acid biosynthesis) locus (B), LPS biosynthesis genes (C), or genes satisfying a t-test cut-off of  $\leq 0.05$  and a ratio of  $\geq 2$  (D).

isolates with differing levels of resistance, to identify SNPs or larger modifications that may have an impact on serum resistance. By this means, we were unable to find a basis for the differences in resistance.

TraDIS and transcriptomic profiling analyses revealed the repertoire of genes involved in survival and growth in serum in these *S. Typhimurium* ST313 isolates. Two major functional groups of differentially selected or expressed genes following serum exposure were identified: genes involved in nutrient scavenging, mainly the uptake and assimilation of iron, and genes involved in the synthesis of bacterial envelope components, particularly of extracellular polysaccharides. Several genes significantly up-regulated on exposure to serum, including *ent*, *iro*, *sit*, *feo* operons, *tonB*, *exbB* and *exbD* were essential for normal levels of viability in serum. For example, deletion of the *entD* gene in D23580 resulted in 40-fold lower viability than wild-type following 3 hours of exposure (Figure 3). Genes classically associated with serum resistance in *S. Typhimurium*, such as *rck*, *traT*, *pgtE*, however, were not significantly up-regulated at the time point investigated (Table S6, Extended data<sup>42</sup>).

The bacterial membrane and its associated components are important for viability in serum. Whilst LPS genes were not significantly up-regulated during serum exposure, we did observe differences in expression patterns of LPS genes between the serum resistant and susceptible strains. In particular, the expression of O-antigen polymerase genes *wzzB* and the very long O-chain determinant *fehE*, were significantly different among these strains, with an average two-fold higher expression of *fehE* detectable within 10 minutes in resistant compared with susceptible strains as determined by RNAseq. Differences in the induction of these two genes resulting in preferential polymerization of LPS into trimodal (including very-long) rather than bimodal (with long) O-chain lengths confer resistance to antibody-dependent complement-mediated serum bactericidal activity in *S. Typhimurium*<sup>34</sup>.

Increased expression of *wca* locus genes, responsible for the synthesis of colanic acid exopolysaccharide was observed. Twenty genes comprise this operon in *S. Typhimurium*<sup>58</sup>, ten of which were differentially expressed in all six strains, along with *rcaA*, which regulates their expression. Rcs-associated

up-regulation of colanic acid genes in response to serum has been observed in pathogenic *E. coli*<sup>57,59</sup>, and is also induced by exposure to antimicrobial peptides in *S. Typhimurium*<sup>60</sup>. Expression of colanic acid is thought to mediate serum resistance either through formation of a barrier against lysis by the membrane attack complex<sup>57</sup> or preventing complement activation by limiting access to LPS<sup>58</sup>. Although we found that colanic acid biosynthetic genes increased expression on exposure to serum, induction was greatest in susceptible strains. Furthermore, Tn5 insertions in colanic acid biosynthetic genes were not counter-selected in the TraDIS screen, and a null *wcaB* mutant was not more sensitive to antibody killing than the wild-type strain.

The relative lower induction of colanic acid biosynthetic gene in resistant strains may be linked to the higher increase in *fepE* expression in these strains. *FepE* is a positive regulator of very long LPS O-antigen chain associated with enhanced serum resistance<sup>34</sup>. In *S. Typhi*, *fepE* is a pseudo gene<sup>61</sup>, and very long LPS O-antigen chain interferes with the expression of the Vi exopolysaccharide capsule<sup>61</sup>. Lower expression of colanic acid biosynthesis genes may therefore facilitate the elaboration of very long LPS O-antigen chain and enhance serum resistance.

The large-scale genome-wide approaches used in this study provided a robust platform for investigating the full complement of genes necessary for survival of *S. Typhimurium* in serum. As with most high-throughput assay systems, some caveats apply. For instance, with mutant libraries, it is not possible to distinguish between mutations associated with an overall decrease in bacterial viability or fitness over ones specifically necessary for complement resistance during selection in serum. Additionally, since the environmental signals *ex vivo* or *in vitro* are not identical to those *in vivo*, the information from the assays may not fully recapitulate the *in vivo* response to antibody-dependent complement killing. However, complementary results from the multiple approaches used in this study, mitigate these limitations to an extent.

We have defined gene functional classes and specific genes associated with serum resistance in six *S. Typhimurium* bloodstream isolates. Investigation of the transcriptional response of resistant and sensitive isolates highlighted putative factors responsible for the diverse serum sensitivity phenotypes exhibited by isolates of *S. Typhimurium* ST313. While susceptibility to antibodies was not associated with an identifiable genotype, distinct transcriptional responses were evident in resistant and sensitive isolates, in particular transcriptional response of genes associated with surface polysaccharides. It is hoped that this study will provide a basis for further research into modes of escape from natural and vaccine-induced immunity among invasive *Salmonella* strains.

## Data availability

### Underlying data

Transcriptional profiling of *Salmonella Typhimurium* during serum exposure, Accession number ERP005455: <http://identifiers.org/ena.embl:ERP005455>

RNA-seq of *S. Typhimurium* bloodstream isolates following exposure to serum versus LB broth controls, Accession number: E-MTAB-7449: <http://identifiers.org/arrayexpress:E-MTAB-7449>

Open Science Framework: Genome and Transcriptome Analysis of invasive African *S. Typhimurium* isolates. <https://doi.org/10.17605/OSF.IO/TM5WN42>

This project contains the following underlying data:

- Count Data\_Serum Bactericidal Assays.xlsx (Raw counts from bactericidal assay)

### Extended data

Open Science Framework: Genome and Transcriptome Analysis of invasive African *S. Typhimurium* isolates. <https://doi.org/10.17605/OSF.IO/TM5WN42>

This project contains the following extended data:

- Fig\_S1.pdf (Susceptibility of 100 clones of *S. Typhimurium* ST313 strains, D23005 (serum resistant) and D24545 (serum susceptible) following exposure to normal human serum for 3 hours)
- Fig\_S2.pdf (Comparisons of chromosomes and major plasmids in six *S. Typhimurium* strains displaying different antibody sensitivities. Blocks represent pairwise blastn comparisons of A. chromosomes B. pSLT virulence plasmid and C. *S. Typhimurium* p14-95A from clade II strains. \*p14-95A was not found in D26104. Comparisons were made using the Artemis Comparison Tool (ACT))
- Table S1\_Primers Used in this study.docx (list of study primers)
- Table S2\_Mapping Statistics.csv (RNA-seq mapping statistics)
- Table S3\_SNP Analysis.xlsx (Extended analysis of single-nucleotide polymorphisms in lineage II isolates)
- Table S4\_D23580\_TraDIS\_Analysis.csv (D23580 TraDIS full analysis)
- Table S5\_GO Terms associated with TraDIS serum resistance determinants.csv (GO terms associated with serum resistance determinants)
- Table S6\_RNA\_Seq\_Upregulated.xlsx (Up-regulated genes determined by RNA-seq)
- Table S7\_RNA\_Seq\_Downregulated.xlsx (Down-regulated genes determined by RNA-seq)
- Table S8\_Expression of known *S. Typhimurium* serum resistance-associated genes.csv (Expression of serum resistance-associated genes *rck*, *traT*, and *pgtE*)

Data are available under the terms of the [Creative Commons Attribution 4.0 International license](https://creativecommons.org/licenses/by/4.0/) (CC-BY 4.0).

### Grant information

This work was supported by the Wellcome Trust [098051].

This research was supported by the European Community's Seventh Framework Programme [FP7/2007-2013] Industry and Academia Partnerships and Pathways award [251522] GEN-DRIVAX (Genome-Driven Vaccine Development for Bacterial Infections), through collaboration between the Novartis Vaccines Institute for Global Health, Wellcome Trust Sanger Institute, Swiss Tropical and Public Health Institute and the Kenya Medical Research Institute. Work at the Wellcome Trust Sanger Institute was supported by the Wellcome Trust [098051]. Work at the Quadram Institute was supported by BBSRC [BB/R012504/1].

GD was supported by Wellcome and the Cambridge BRC AMR theme.

*The funders had no role in study design, data collection and analysis, decision to publish, or preparation of the manuscript.*

## Acknowledgements

We wish to thank the Wellcome Trust Sanger Institute Sequencing Pipelines and Pathogen Informatics Team for their assistance with the experiments.

## References

- Ao TT, Feasey NA, Gordon MA, *et al.*: **Global burden of invasive nontyphoidal *Salmonella* disease, 2010(1).** *Emerg Infect Dis.* 2015; 21(6): 941–949. [PubMed Abstract](#) | [Publisher Full Text](#) | [Free Full Text](#)
- Reddy EA, Shaw AV, Crump JA: **Community-acquired bloodstream infections in Africa: a systematic review and meta-analysis.** *Lancet Infect Dis.* 2010; 10(6): 417–432. [PubMed Abstract](#) | [Publisher Full Text](#) | [Free Full Text](#)
- Cunnington AJ, de Souza JB, Walther M, *et al.*: **Malaria impairs resistance to *Salmonella* through heme- and heme oxygenase-dependent dysfunctional granulocyte mobilization.** *Nat Med.* 2011; 18(1): 120–127. [PubMed Abstract](#) | [Publisher Full Text](#) | [Free Full Text](#)
- Mooney JP, Butler BP, Lokken KL, *et al.*: **The mucosal inflammatory response to non-typhoidal *Salmonella* in the intestine is blunted by IL-10 during concurrent malaria parasite infection.** *Mucosal Immunol.* 2014; 7(6): 1302–11. [PubMed Abstract](#) | [Publisher Full Text](#) | [Free Full Text](#)
- Takem EN, Roca A, Cunningham A: **The association between malaria and nontyphoid *Salmonella* bacteraemia in children in sub-Saharan Africa: a literature review.** *Malar J.* 2014; 13: 400. [PubMed Abstract](#) | [Publisher Full Text](#) | [Free Full Text](#)
- Bronzan RN, Taylor TE, Mwenechanya J, *et al.*: **Bacteremia in Malawian children with severe malaria: prevalence, etiology, HIV coinfection, and outcome.** *J Infect Dis.* 2007; 195(6): 895–904. [PubMed Abstract](#) | [Publisher Full Text](#)
- Gordon MA: ***Salmonella* infections in immunocompromised adults.** *J Infect.* 2008; 56(6): 413–422. [PubMed Abstract](#) | [Publisher Full Text](#)
- Gordon MA, Gordon SB, Musaya L, *et al.*: **Primary macrophages from HIV-infected adults show dysregulated cytokine responses to *Salmonella*, but normal internalization and killing.** *AIDS.* 2007; 21(18): 2399–2408. [PubMed Abstract](#) | [Publisher Full Text](#)
- MacLennan CA, Gilchrist JJ, Gordon MA, *et al.*: **Dysregulated humoral immunity to nontyphoidal *Salmonella* in HIV-infected African adults.** *Science.* 2010; 328(5977): 508–512. [PubMed Abstract](#) | [Publisher Full Text](#) | [Free Full Text](#)
- Gondwe EN, Molyneux ME, Goodall M, *et al.*: **Importance of antibody and complement for oxidative burst and killing of invasive nontyphoidal *Salmonella* by blood cells in Africans.** *Proc Natl Acad Sci U S A.* 2010; 107(7): 3070–3075. [PubMed Abstract](#) | [Publisher Full Text](#) | [Free Full Text](#)
- MacLennan CA, Gondwe EN, Msefula CL, *et al.*: **The neglected role of antibody in protection against bacteremia caused by nontyphoidal strains of *Salmonella* in African children.** *J Clin Invest.* 2008; 118(4): 1553–1562. [PubMed Abstract](#) | [Publisher Full Text](#) | [Free Full Text](#)
- MacLennan CA, Msefula CL, Gondwe EN, *et al.*: **Presentation of life-threatening invasive nontyphoidal *Salmonella* disease in Malawian children: A prospective observational study.** *PLoS Negl Trop Dis.* 2017; 11(12): e0006027. [PubMed Abstract](#) | [Publisher Full Text](#) | [Free Full Text](#)
- Park SE, Pak GD, Aaby P, *et al.*: **The Relationship Between Invasive Nontyphoidal *Salmonella* Disease, Other Bacterial Bloodstream Infections, and Malaria in Sub-Saharan Africa.** *Clin Infect Dis.* 2016; 62 Suppl 1: S23–S31. [PubMed Abstract](#) | [Publisher Full Text](#) | [Free Full Text](#)
- Brent AJ, Oundo JO, Mwangi I, *et al.*: ***Salmonella* bacteremia in Kenyan children.** *Pediatr Infect Dis J.* 2006; 25(3): 230–236. [PubMed Abstract](#) | [Publisher Full Text](#)
- Kingsley RA, Msefula CL, Thomson NR, *et al.*: **Epidemic multiple drug resistant *Salmonella* Typhimurium causing invasive disease in sub-Saharan Africa have a distinct genotype.** *Genome Res.* 2009; 19(12): 2279–2287. [PubMed Abstract](#) | [Publisher Full Text](#) | [Free Full Text](#)
- Okoro CK, Barquist L, Connor TR, *et al.*: **Signatures of adaptation in human invasive *Salmonella* Typhimurium ST313 populations from sub-Saharan Africa.** *PLoS Negl Trop Dis.* 2015; 9(3): e0003611. [PubMed Abstract](#) | [Publisher Full Text](#) | [Free Full Text](#)
- Singleton LA, Karlinsey JE, Libby SJ, *et al.*: **Loss of Multicellular Behavior in Epidemic African Nontyphoidal *Salmonella enterica* Serovar Typhimurium ST313 Strain D23580.** *mBio.* 2016; 7(2): e02265. [PubMed Abstract](#) | [Publisher Full Text](#) | [Free Full Text](#)
- Parsons BN, Humphrey S, Salisbury AM, *et al.*: **Invasive non-typhoidal *Salmonella* typhimurium ST313 are not host-restricted and have an invasive phenotype in experimentally infected chickens.** *PLoS Negl Trop Dis.* 2013; 7(10): e2487. [PubMed Abstract](#) | [Publisher Full Text](#) | [Free Full Text](#)
- Ramachandran G, Panda A, Higginson EE, *et al.*: **Virulence of invasive *Salmonella* Typhimurium ST313 in animal models of infection.** *PLoS Negl Trop Dis.* 2017; 11(8): e0005697. [PubMed Abstract](#) | [Publisher Full Text](#) | [Free Full Text](#)
- Hammarlöf DL, Kröger C, Owen SV, *et al.*: **Role of a single noncoding nucleotide in the evolution of an epidemic African clade of *Salmonella*.** *Proc Natl Acad Sci U S A.* 2018; 115(11): E2614–E2623. [PubMed Abstract](#) | [Publisher Full Text](#) | [Free Full Text](#)
- Ramachandran G, Aheto K, Shirliff ME, *et al.*: **Poor biofilm-forming ability and long-term survival of invasive *Salmonella* Typhimurium ST313.** *Pathog Dis.* 2016; 74(5): pii: ftw049. [PubMed Abstract](#) | [Publisher Full Text](#) | [Free Full Text](#)
- Carden S, Okoro C, Dougan G, *et al.*: **Non-typhoidal *Salmonella* Typhimurium ST313 isolates that cause bacteremia in humans stimulate less inflammasome activation than ST19 isolates associated with gastroenteritis.** *Pathog Dis.* 2015; 73(4): pii: ftu023. [PubMed Abstract](#) | [Publisher Full Text](#) | [Free Full Text](#)
- Carden SE, Walker GT, Honeycutt J, *et al.*: **Pseudogenization of the Secreted Effector Gene *ssel* Confers Rapid Systemic Dissemination of S. Typhimurium ST313 within Migratory Dendritic Cells.** *Cell Host Microbe.* 2017; 21(2): 182–194. [PubMed Abstract](#) | [Publisher Full Text](#) | [Free Full Text](#)
- Ramachandran G, Perkins DJ, Schmidlein PJ, *et al.*: **Invasive *Salmonella* Typhimurium ST313 with naturally attenuated flagellin elicits reduced inflammation and replicates within macrophages.** *PLoS Negl Trop Dis.* 2015; 9(1): e3394. [PubMed Abstract](#) | [Publisher Full Text](#) | [Free Full Text](#)
- Goh YS, MacLennan CA: **Invasive African nontyphoidal *Salmonella* requires high levels of complement for cell-free antibody-dependent killing.** *J Immunol Methods.* 2013; 387(1–2): 121–129. [PubMed Abstract](#) | [Publisher Full Text](#)
- Gondwe EN, Molyneux ME, Goodall M, *et al.*: **Importance of antibody and complement for oxidative burst and killing of invasive nontyphoidal *Salmonella* by blood cells in Africans.** *Proc Natl Acad Sci U S A.* 2010; 107(7): 3070–3075. [PubMed Abstract](#) | [Publisher Full Text](#) | [Free Full Text](#)
- Vazquez-Torres A, Xu Y, Jones-Carson J, *et al.*: ***Salmonella* pathogenicity island 2-dependent evasion of the phagocyte NADPH oxidase.** *Science.* 2000; 287(5458): 1655–1658. [PubMed Abstract](#) | [Publisher Full Text](#)
- Ramu P, Tanskanen R, Holmberg M, *et al.*: **The surface protease PgtE of *Salmonella enterica* affects complement activity by proteolytically cleaving C3b, C4b and C5.** *FEBS Lett.* 2007; 581(9): 1716–1720. [PubMed Abstract](#) | [Publisher Full Text](#)
- Riva R, Korhonen TK, Meri S: **The outer membrane protease PgtE of *Salmonella enterica* interferes with the alternative complement pathway by cleaving factors B and H.** *Front Microbiol.* 2015; 6: 63. [PubMed Abstract](#) | [Publisher Full Text](#) | [Free Full Text](#)

30. Cirillo DM, Heffernan EJ, Wu L, *et al.*: Identification of a domain in Rck, a product of the *Salmonella typhimurium* virulence plasmid, required for both serum resistance and cell invasion. *Infect Immun.* 1996; **64**(6): 2019–2023. [PubMed Abstract](#) | [Free Full Text](#)
31. Nishio M, Okada N, Miki T, *et al.*: Identification of the outer-membrane protein PagC required for the serum resistance phenotype in *Salmonella enterica* serovar Choleraesuis. *Microbiology.* 2005; **151**(Pt 3): 863–873. [PubMed Abstract](#) | [Publisher Full Text](#)
32. Rhen M, Sukupolvi S: The role of the *traT* gene of the *Salmonella typhimurium* virulence plasmid for serum resistance and growth within liver macrophages. *Microb Pathog.* 1988; **5**(4): 275–285. [PubMed Abstract](#) | [Publisher Full Text](#)
33. Liang-Takasaki CJ, Mäkelä PH, Leive L: Phagocytosis of bacteria by macrophages: changing the carbohydrate of lipopolysaccharide alters interaction with complement and macrophages. *J Immunol.* 1982; **128**(3): 1229–1235. [PubMed Abstract](#)
34. Murray GL, Attridge SR, Morona R: Inducible serum resistance in *Salmonella typhimurium* is dependent on *wzz*<sub>regE</sub>-regulated very long O antigen chains. *Microbes Infect.* 2005; **7**(13): 1296–1304. [PubMed Abstract](#) | [Publisher Full Text](#)
35. Murray GL, Attridge SR, Morona R: Altering the length of the lipopolysaccharide O antigen has an impact on the interaction of *Salmonella enterica* serovar Typhimurium with macrophages and complement. *J Bacteriol.* 2006; **188**(7): 2735–2739. [PubMed Abstract](#) | [Publisher Full Text](#) | [Free Full Text](#)
36. Rondini S, Lanzilao L, Necchi F, *et al.*: Invasive African *Salmonella typhimurium* induces bactericidal antibodies against O-antigens. *Microb Pathog.* 2013; **63**: 19–23. [PubMed Abstract](#) | [Publisher Full Text](#)
37. Svenson SB, Lindberg AA: Artificial *Salmonella* vaccines: *Salmonella typhimurium* O-antigen-specific oligosaccharide-protein conjugates elicit protective antibodies in rabbits and mice. *Infect Immun.* 1981; **32**(2): 490–496. [PubMed Abstract](#) | [Free Full Text](#)
38. MacLennan CA, Martin LB, Micoli F: Vaccines against invasive *Salmonella* disease: current status and future directions. *Hum Vaccin Immunother.* 2014; **10**(6): 1478–1493. [PubMed Abstract](#) | [Publisher Full Text](#) | [Free Full Text](#)
39. Baliban SM, Curtis B, Toema D, *et al.*: Immunogenicity and efficacy following sequential parenterally-administered doses of *Salmonella* Enteritidis COPS: FliC glycoconjugates in infant and adult mice. *PLoS Negl Trop Dis.* 2018; **12**(5): e0006522. [PubMed Abstract](#) | [Publisher Full Text](#) | [Free Full Text](#)
40. Micoli F, Rondini S, Alfini R, *et al.*: Comparative immunogenicity and efficacy of equivalent outer membrane vesicle and glycoconjugate vaccines against nontyphoidal *Salmonella*. *Proc Natl Acad Sci USA.* 2018; **115**(41): 10428–10433. [PubMed Abstract](#) | [Publisher Full Text](#) | [Free Full Text](#)
41. Datsenko KA, Wanner BL: One-step inactivation of chromosomal genes in *Escherichia coli* K-12 using PCR products. *Proc Natl Acad Sci U S A.* 2000; **97**(12): 6640–6645. [PubMed Abstract](#) | [Publisher Full Text](#) | [Free Full Text](#)
42. Ondari E, Klemm EJ, Msefula CL, *et al.*: Genome and Transcriptome Analysis of invasive African *S. Typhimurium* isolates. 2019. <http://www.doi.org/10.17605/OSF.IO/TMSWN>
43. Langridge GC, Phan MD, Turner DJ, *et al.*: Simultaneous assay of every *Salmonella* Typhi gene using one million transposon mutants. *Genome Res.* 2009; **19**(12): 2308–2316. [PubMed Abstract](#) | [Publisher Full Text](#) | [Free Full Text](#)
44. Barquist L, Mayho M, Cummins C, *et al.*: The TraDIS toolkit: sequencing and analysis for dense transposon mutant libraries. *Bioinformatics.* 2016; **32**(7): 1109–1111. [PubMed Abstract](#) | [Publisher Full Text](#) | [Free Full Text](#)
45. Robinson MD, McCarthy DJ, Smyth GK: edgeR: a Bioconductor package for differential expression analysis of digital gene expression data. *Bioinformatics.* 2010; **26**(1): 139–140. [PubMed Abstract](#) | [Publisher Full Text](#) | [Free Full Text](#)
46. Chin CS, Alexander DH, Marks P, *et al.*: Nonhybrid, finished microbial genome assemblies from long-read SMRT sequencing data. *Nat Meth.* 2013; **10**(6): 563–569. [PubMed Abstract](#) | [Publisher Full Text](#)
47. PacificBiosciences: SMRT-Analysis, vv.2.3.0. [Reference Source](#)
48. Hunt M, Silva ND, Otto TD, *et al.*: Circlator: automated circularization of genome assemblies using long sequencing reads. *Genome Biol.* 2015; **16**: 294. [PubMed Abstract](#) | [Publisher Full Text](#) | [Free Full Text](#)
49. Tedin K, Bläsi U: The RNA chain elongation rate of the lambda late mRNA is unaffected by high levels of ppGpp in the absence of amino acid starvation. *J Biol Chem.* 1996; **271**(30): 17675–17686. [PubMed Abstract](#) | [Publisher Full Text](#)
50. Li H, Durbin R: Fast and accurate long-read alignment with Burrows-Wheeler transform. *Bioinformatics.* 2010; **26**(5): 589–595. [PubMed Abstract](#) | [Publisher Full Text](#) | [Free Full Text](#)
51. Pathogen Informatics W: Bio-RNaseq. [Reference Source](#)
52. Mortazavi A, Williams BA, McCue K, *et al.*: Mapping and quantifying mammalian transcriptomes by RNA-Seq. *Nat Methods.* 2008; **5**(7): 621–628. [PubMed Abstract](#) | [Publisher Full Text](#)
53. Vergara-Irigaray M, Fookes MC, Thomson NR, *et al.*: RNA-seq analysis of the influence of anaerobiosis and FNR on *Shigella flexneri*. *BMC Genomics.* 2014; **15**: 438. [PubMed Abstract](#) | [Publisher Full Text](#) | [Free Full Text](#)
54. Love MI, Huber W, Anders S: Moderated estimation of fold change and dispersion for RNA-seq data with DESeq2. *Genome Biol.* 2014; **15**(12): 550. [PubMed Abstract](#) | [Publisher Full Text](#) | [Free Full Text](#)
55. Makendi C, Page AJ, Wren BW, *et al.*: A Phylogenetic and Phenotypic Analysis of *Salmonella enterica* Serovar Weltevreden, an Emerging Agent of Diarrheal Disease in Tropical Regions. *PLoS Negl Trop Dis.* 2016; **10**(2): e0004446. [PubMed Abstract](#) | [Publisher Full Text](#) | [Free Full Text](#)
56. Okoro CK, Kingsley RA, Connor TR, *et al.*: Intracontinental spread of human invasive *Salmonella typhimurium* pathovariants in sub-Saharan Africa. *Nat Genet.* 2012; **44**(11): 1215–1221. [PubMed Abstract](#) | [Publisher Full Text](#) | [Free Full Text](#)
57. Miajlovic H, Cooke NM, Moran GP, *et al.*: Response of extraintestinal pathogenic *Escherichia coli* to human serum reveals a protective role for Rcs-regulated exopolysaccharide colanic acid. *Infect Immun.* 2014; **82**(1): 298–305. [PubMed Abstract](#) | [Publisher Full Text](#) | [Free Full Text](#)
58. Wang S, Shi H, Li Y, *et al.*: A colanic acid operon deletion mutation enhances induction of early antibody responses by live attenuated *Salmonella* vaccine strains. *Infect Immun.* 2013; **81**(9): 3148–3162. [PubMed Abstract](#) | [Publisher Full Text](#) | [Free Full Text](#)
59. Phan MD, Peters KM, Sarkar S, *et al.*: The serum resistome of a globally disseminated multidrug resistant uropathogenic *Escherichia coli* clone. *PLoS Genet.* 2013; **9**(10): e1003834. [PubMed Abstract](#) | [Publisher Full Text](#) | [Free Full Text](#)
60. Bader MW, Navarre WW, Shiau W, *et al.*: Regulation of *Salmonella typhimurium* virulence gene expression by cationic antimicrobial peptides. *Mol Microbiol.* 2003; **50**(1): 219–230. [PubMed Abstract](#) | [Publisher Full Text](#)
61. Crawford RW, Wangdi T, Spees AM, *et al.*: Loss of very-long O-antigen chains optimizes capsule-mediated immune evasion by *Salmonella enterica* serovar Typhi. *mBio.* 2013; **4**(4): pii: e00232-13. [PubMed Abstract](#) | [Publisher Full Text](#) | [Free Full Text](#)

# Open Peer Review

Current Peer Review Status:  

## Version 1

Reviewer Report 10 June 2019

<https://doi.org/10.21956/wellcomeopenres.16429.r35440>

© 2019 Schembri M. This is an open access peer review report distributed under the terms of the [Creative Commons Attribution Licence](#), which permits unrestricted use, distribution, and reproduction in any medium, provided the original work is properly cited.



### Mark A. Schembri

School of Chemistry and Molecular Biosciences, The University of Queensland, Brisbane, Australia

This manuscript describes an analysis of 3 serum-resistant and 3 serum-sensitive *S. Typhimurium* ST313 bloodstream isolates using a combination of genome sequence analysis, TraDIS and RNA-seq. Several large datasets were generated and analysed. Based on genome analysis, no chromosomal modifications could be attributed to serum resistance or susceptibility. In contrast, the combination of TraDIS and RNA-seq analysis identified genes involved in exopolysaccharide synthesis, iron scavenging and metabolism that were required for resistance to serum.

The manuscript is generally well written and my comments are all minor. Overall, I think this work represents a valuable contribution that will be of interest to other researchers in the field.

#### Comments

- It is stated that phylogenetically related ST313 that vary by only a few SNPs can exhibit reproducible differences in their resistance to serum killing. Do the authors mean core SNPs?
- Five isolates of lineage II (D23580, D24545, D23005, D25352, D24871) and two of lineage I (A130 and D26104) with different serum susceptibilities were studied. Are these strains of the same serotype?
- The *traT* and *rck* genes, two known serum resistance genes, were both intact and had 100% sequence identity in all the six isolates. Identity is used to compare amino acid sequences. Therefore, it would be more accurate to refer to the nucleotide sequences as 100% conserved.
- It wasn't clear if the TraDIS reads have been deposited to the SRA. Please clarify and if not provide accession numbers.
- The application of TraDIS and RNA-seq provides a powerful combination to understand serum resistance. I think the authors could discuss how the combining these two methods enhanced their overall findings.

**Is the work clearly and accurately presented and does it cite the current literature?**

Yes

**Is the study design appropriate and is the work technically sound?**

Yes

**Are sufficient details of methods and analysis provided to allow replication by others?**

Yes

**If applicable, is the statistical analysis and its interpretation appropriate?**

Yes

**Are all the source data underlying the results available to ensure full reproducibility?**

Partly

**Are the conclusions drawn adequately supported by the results?**

Yes

**Competing Interests:** No competing interests were disclosed.

**Reviewer Expertise:** Bacterial pathogenesis, molecular microbiology.

**I have read this submission. I believe that I have an appropriate level of expertise to confirm that it is of an acceptable scientific standard.**

Reviewer Report 29 May 2019

<https://doi.org/10.21956/wellcomeopenres.16429.r35647>

© 2019 Raffatellu M. This is an open access peer review report distributed under the terms of the [Creative Commons Attribution Licence](#), which permits unrestricted use, distribution, and reproduction in any medium, provided the original work is properly cited.



**Manuela Raffatellu** 

Division of Host-Microbe Systems & Therapeutics, Department of Pediatrics, University of California San Diego, La Jolla, CA, USA

Ondari *et al.* investigate mechanisms of serum resistance/sensitivity in six *S. Typhimurium* ST313 isolates. Sequence polymorphisms were identified, but their transfer to a strain with intermediate resistance did not affect serum resistance. TraDIS and RNAseq identified genes required for serum resistance, including those involved in exopolysaccharide synthesis, O-antigen length, colonic acid biosynthesis, and iron metabolism.

Overall, this is an important study that aims to address key mechanisms of pathogenicity of African *Salmonella* isolates. The manuscript is clearly written, the experiments are well conducted, and the results are carefully interpreted and discussed.

1. One question that remains to be addressed is the mechanisms underlying the differences in gene expression between isolates that are serum resistant and the ones that are serum sensitive. Based on the authors' data, it appears that the differences in the genomes are relatively minor, while differences in gene expression (e.g., Fig. 5) are quite dramatic. How do the authors explain these differences in gene expression, despite very similar genomes? Are there SNPs in the promoter of key regulators? Differences in the expression of key regulators? If the current data do not reveal

differences in key regulatory mechanisms, then the authors should discuss possible mechanisms underlying the differences in gene expression between isolates.

2. One of the authors' conclusions is that iron uptake genes are associated to serum resistance. Included in this list is the *sit* operon. Although initially identified as an iron transporter, *sitABCD* is primarily a manganese transporter. Also, the authors' datasets list another manganese transporter, *mntH*. Thus, the authors data indicate that both iron and manganese uptake genes are associated to serum resistance. I suggest that the results and discussion sections are updated to include manganese transport genes (*sit* and *mntH*).

**Is the work clearly and accurately presented and does it cite the current literature?**

Yes

**Is the study design appropriate and is the work technically sound?**

Yes

**Are sufficient details of methods and analysis provided to allow replication by others?**

Yes

**If applicable, is the statistical analysis and its interpretation appropriate?**

Yes

**Are all the source data underlying the results available to ensure full reproducibility?**

Yes

**Are the conclusions drawn adequately supported by the results?**

Yes

**Competing Interests:** No competing interests were disclosed.

**I have read this submission. I believe that I have an appropriate level of expertise to confirm that it is of an acceptable scientific standard.**

---