

BMJ Open Vascular endothelial growth factor as a predictive marker for POEMS syndrome treatment response: retrospective cohort study

S Misawa,¹ Y Sato,² K Katayama,² H Hanaoka,² S Sawai,⁴ M Beppu,⁴ F Nomura,⁴ K Shibuya,¹ Y Sekiguchi,¹ Y Iwai,¹ K Watanabe,¹ H Amino,¹ C Ohwada,³ M Takeuchi,³ E Sakaida,³ C Nakaseko,³ S Kuwabara¹

To cite: Misawa S, Sato Y, Katayama K, *et al.* Vascular endothelial growth factor as a predictive marker for POEMS syndrome treatment response: retrospective cohort study. *BMJ Open* 2015;**5**:e009157. doi:10.1136/bmjopen-2015-009157

► Prepublication history for this paper is available online. To view these files please visit the journal online (<http://dx.doi.org/10.1136/bmjopen-2015-009157>).

Received 22 June 2015
Revised 1 October 2015
Accepted 20 October 2015



CrossMark

¹Department of Neurology, Graduate School of Medicine, Chiba University, Chiba, Japan

²Clinical Research Center, Chiba University Hospital, Chiba, Japan

³Department of Hematology, Chiba University Hospital, Chiba, Japan

⁴Department of Molecular Diagnosis, Graduate School of Medicine, Chiba University, Chiba, Japan

Correspondence to

Dr Sonoko Misawa;
sonoko.m@mb.infoweb.ne.jp

ABSTRACT

Objective: POEMS (polyneuropathy, organomegaly, endocrinopathy, M-protein and skin changes) syndrome is a rare multisystem disease characterised by plasma cell dyscrasia and overproduction of vascular endothelial growth factor (VEGF). VEGF is assumed to be useful in monitoring disease activity, because VEGF levels usually decrease after treatment. However, there is no study to investigate whether the extent of decrease in VEGF correlates with clinical outcome. We tested the predictive efficacy of serum VEGF levels in POEMS syndrome.

Method: This was an institutional review board approved retrospective observational cohort study of 20 patients with POEMS monitored regularly for more than 12 months (median follow-up, 87 months) after treatment onset using our prospectively accumulated database of POEMS from 1999 to 2015. Patients were treated by autologous peripheral blood stem cell transplantation or thalidomide administration. Serum VEGF was measured by ELISA. Outcome measures included clinical and laboratory findings and relapse-free survival.

Results: Serum VEGF levels decreased rapidly after treatment, and stabilised by 6 months post treatment. Patients with normalised serum VEGF levels (<1040 pg/mL) at 6 months showed prolonged relapse-free survival (HR=12.81, 95% CI 2.691 to 90.96; p=0.0001) and greater later clinical improvement. The rate of serum VEGF reduction over the first 6 months post treatment correlated with increased grip strength, serum albumin levels, and compound muscle action potential amplitudes at 12 months.

Conclusions: Serum VEGF level at 6 months post treatment is a predictive biomarker for disease activity and prognosis in POEMS syndrome. Serum VEGF could be used as a surrogate endpoint for relapse-free survival or clinical or laboratory improvement of POEMS syndrome for clinical trials.

INTRODUCTION

POEMS (polyneuropathy, organomegaly, endocrinopathy, M-protein and skin changes)

Strengths and limitations of this study

- This study showed the extent of serum vascular endothelial growth factor (VEGF) reduction after treatment significantly correlates with the prognosis in POEMS (polyneuropathy, organomegaly, endocrinopathy, M-protein, and skin changes) syndrome.
- VEGF can be used as a surrogate marker in prospective clinical trials for POEMS syndrome.
- This is a retrospective study, including a small number of patients of different background and age.

syndrome is a rare (prevalence 0.3 per 100 000) multisystemic disorder associated with plasma cell dyscrasia.^{1 2} Potentially fatal clinical manifestations include progressive demyelinating polyneuropathy leading to tetraplegia.³⁻⁵ Overproduction of vascular endothelial growth factor (VEGF), a multifunctional cytokine that induces angiogenesis and microvascular hyperpermeability,⁶ may be involved in the pathogenesis of many POEMS symptoms. Serum VEGF is markedly and specifically elevated in this syndrome,⁷⁻¹⁰ and major diagnostic criteria include increased VEGF.¹¹⁻¹³ Moreover, serum VEGF concentration usually decreases following successful therapeutic intervention.¹⁴⁻¹⁷ However, no study has investigated whether changes in VEGF levels after treatment are predictive of clinical improvement or outcome.

New therapeutic interventions, such as autologous peripheral blood stem cell transplantation and immunomodulatory drug regimens, have improved POEMS prognosis,^{14 15 18 19} but comparative evaluations of treatment efficacy are lacking. Most POEMS studies are retrospective case series or case reports rather than prospective randomised controlled clinical trials due to the rarity of

this disease.¹² A reliable early biomarker of long-term outcome could facilitate clinical trials even with a limited patient sample. Therefore, we examined whether VEGF levels are predictive of longer-term clinical improvement.

METHODS

Subjects

This observational study was approved by the institutional review board of Chiba University Graduate School of Medicine. The diagnosis of POEMS was established using the published criteria.¹² Study subjects for this retrospective cohort study were drawn from our database of 85 consecutive patients with POEMS (57 men) treated from 1999 to 2015. From this database, we identified 21 consecutive patients who started primary POEMS syndrome treatment, peripheral blood stem cell transplantation or thalidomide, during the 10-year period 1999–2009 because in 2010 we began an ongoing clinical trial of POEMS syndrome in which serum VEGF levels are blinded.

From the 21 patients, we excluded one patient treated with bevacizumab (anti-VEGF monoclonal antibody) because bevacizumab strongly suppresses VEGF levels for several months. In the 20 patients, VEGF levels were measured regularly (at least once every 3–6 months) for more than 1 year after transplantation or thalidomide treatment and the median follow-up period is 87 months (range 24–133 months). Clinical signs (performance status, overall neuropathy limitation scale and grip strength (sum of both hands)) and blood tests were checked at each visit and nerve conduction studies were performed every 3–6 months. Eight patients were pre-treated with low to moderate dose steroids (n=7) or immunoglobulin (n=1) prior to transplantation or thalidomide. Clinical and laboratory profiles of the 20 patients are shown in [table 1](#). Changes in serum VEGF levels after treatment were measured and correlations

with clinical/laboratory findings, relapse-free survival and complete remission were calculated. We defined relapse as clinical deterioration attributable to POEMS syndrome, such as extravascular overload (oedema/effusions/ascites) or neuropathy, and censoring was defined as the last visit during the observation period. Complete remission was defined according to the International Myeloma Working Group criteria: negative immunofixation with disappearance of any plasma cytomata and >5% plasma cells in the bone marrow.^{17 20} One author (SM) selected the patients from the database and reviewed medical records. YS, who was blinded to the clinical information, mainly performed statistical analysis.

Treatments for POEMS syndrome

Patients were treated with transplantation (n=12) or thalidomide and dexamethasone (n=8). Autologous peripheral blood stem cell collection was performed after mobilisation by subcutaneous granulocyte colony-stimulating factor with or without high-dose cyclophosphamide (2 g/m²/day for 2 consecutive days). High-dose melphalan chemotherapy (140–200 mg/m²) and stem-cell transplantation were performed approximately 1 month after blood cell collection according to the standard treatment regimen for multiple myeloma. Melphalan dose was reduced in patients with performance status 4 (completely disabled). The median follow-up period after transplantation was 90 months (range 35–133 months). Combination thalidomide (100–300 mg/day on days 1–28) and dexamethasone (12 mg/m² on days 1–4) was administered every 4 weeks for 19–42 cycles (median 32 cycles). The median follow-up period after thalidomide administration was 87 months (range 24–106 months).

VEGF measurements

Serum VEGF levels were measured by ELISA commercially (Special Reference Laboratory Co., Tokyo, Japan).

Table 1 Patient characteristics (n=20)

	Auto-PBSCT (n=12)	Thalidomide (n=8)
Clinical profiles		
Age (years)	48 (36–61)	69 (59–84)
Gender (male:female)	9:3	5:3
Time from symptoms to therapy (months)	17 (2–120)	25 (4–101)
Performance status	1 (1–4)	2 (1–3)
Overall Neuropathy Limitation Scale	5 (1–11)	6 (2–9)
Laboratory data		
Albumin (g/dL)	3.8 (2.7–4.5)	3.4 (2.7–3.9)
Creatinine (mg/dL)	0.7 (0.5–1.2)	0.9 (0.4–2.0)
Immunoglobulin (IgA:IgG)	4:6	2:5
Vascular endothelial growth factor	2950 (126–7870)	2520 (1430–7970)
Nerve conduction study (median nerve)		
CMAP amplitude (mV)	5.3 (0–12.8)	5.2 (0.1–9.4)
Motor conduction velocity (m/s)	33.0 (23–45)	26 (14–48)

Data are given as median (range).

CMAP, compound muscle action potential; PBSCT, peripheral blood stem cell transplantation.

The cut-off values for diagnosis of POEMS was established using data from 50 untreated patients with POEMS (33 men; age range 34–76 years) from our retrospective cohort and samples from 120 healthy subjects (61 men; age range 21–79 years). The cut-off value for diagnosis (1040 pg/mL) was defined as the point with 100% sensitivity and 99% specificity by plotting receiver operating characteristic curves.

Statistical analyses

For the baseline variables, summary statistics were constructed employing frequencies and proportions for categorical data, and means and SDs for continuous variables. Univariate analyses were carried out using the t test or Mann–Whitney U test for continuous variables and Fisher's exact test for categorical variables. For time-to-event outcomes, the Kaplan–Meier method was used to estimate relapse-free survival for each group, and the difference in survival between groups was

compared by the log-rank test. The HRs and 95% CIs were estimated by the Cox proportional hazards model.

All comparisons were planned and the tests were two sided. A p value of less than 0.05 was considered to indicate a statistically significant difference. All statistical analyses were conducted using JMP, Japanese V.5.1.1 for Windows (SAS Institute Inc., Cary, North Carolina, USA).

RESULTS

Changes in VEGF levels after treatment and relapse-free survival

Before the start of autologous peripheral blood stem cell transplantation or thalidomide treatment for POEMS syndrome, serum VEGF was elevated above the cut-off value (1040 pg/mL) in all but one patient. The one pretreated for 6 months with moderate-dose steroid (prednisone 20–30 mg daily) exhibited low VEGF levels throughout the study period following primary POEMS syndrome treatment (transplantation). Serum VEGF levels decreased steadily over 6 months after primary treatment and eventually stabilised in all patients (figure 1). Patients treated by transplantation (n=12) had a mean \pm SD baseline VEGF of 3186 ± 2072 pg/mL, decreasing to 668 ± 481 pg/mL at 3 months, 664 ± 584 pg/mL at 6 months, and 541 ± 635 pg/mL at 12 months post treatment. The rate of decrease among patients treated with transplantation was steeper than those treated with thalidomide (3273 ± 2244 pg/mL at baseline, 1770 ± 1352 pg/mL at 3 months, 1223 ± 857 pg/mL at 6 months, and 1350 ± 993 pg/mL at 12 months). All patients with serum VEGF ≥ 1040 pg/mL (cut-off value) at 6 months post treatment relapsed with a median time of 36 months. The Kaplan–Meier estimates of relapse-free survival at 3 years were 93% in patients with VEGF levels <1040 pg/mL and 40% in patients with VEGF levels ≥ 1040 pg/mL

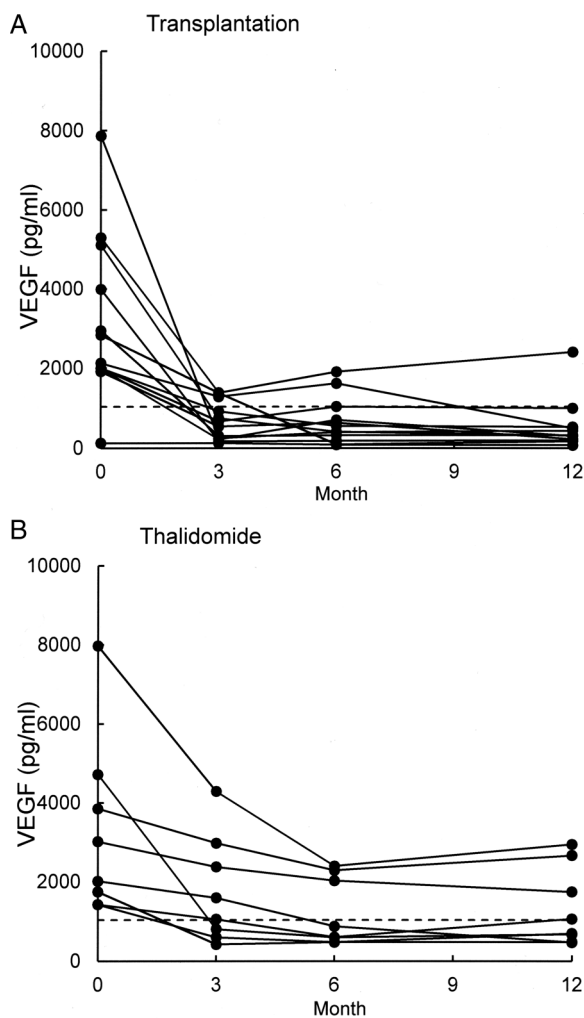


Figure 1 Changes in serum vascular endothelial growth factor (VEGF) after treatment. (A) Autologous peripheral blood stem cell transplantation with high-dose chemotherapy (n=12). (B) Thalidomide–dexamethasone therapy (n=8).

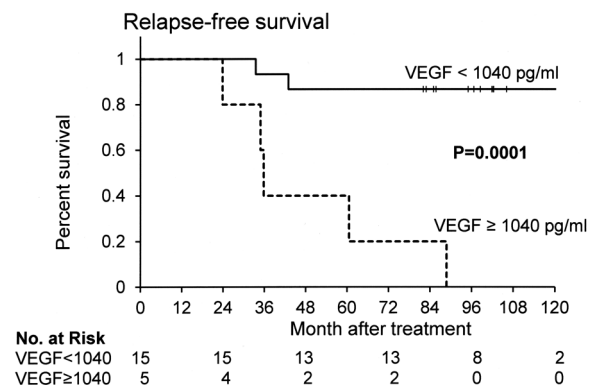


Figure 2 Kaplan–Meier plot for relapse-free survival. Patients with vascular endothelial growth factor (VEGF) <1040 pg/mL at 6 months after treatment showed significant longer relapse-free survival than patients with VEGF ≥ 1040 pg/mL (HR=12.81, 95% CI 2.691 to 90.96; p=0.0001).

Table 2 Changes in clinical and laboratory parameters after treatment (n=20)

	A	B	C	p Value	
	Baseline	6 months	12 months	A vs B	A vs C
Performance status	1.5 (1–4)	1 (1–4)	1 (1–4)	1.0	0.19
Overall Neuropathy Limitation Scale					
Arm scale	2 (0–4)	2 (0–4)	1 (0–4)	0.069	0.0016
Leg scale	3 (1–7)	3 (1–7)	2.5 (0–7)	0.15	0.025
Grip	28 (6–85)	32 (0–93)	40 (0–107)	0.052	0.014
Laboratory data					
Albumin (g/dL)	3.8 (2.7–4.5)	3.55 (2.7–4.8)	4.3 (2.7–5.1)	0.056	0.013
Creatinine (mg/dL)	0.77 (0.42–2.02)	0.77 (0.37–1.13)	0.84 (0.38–1.63)	0.13	0.44
Nerve conduction study (median nerve)					
CMAP amplitude (mV)	5.3 (0–12.8)	6.2 (0–14.1)	8.2 (0–4.6)	0.31	0.0005
Motor conduction velocity (m/s)	32 (17–48)	39 (20–50)	39 (20–50)	0.19	0.008

Data are given as median (range).

CMAP, compound muscle action potential.

at 6 months post treatment (HR=12.81; 95% CI 2.691 to 90.96; $p=0.0001$, [figure 2](#)). These findings suggest that suppression of serum VEGF levels to within the normal range at 6 months post treatment may prolong relapse-free survival. All of the seven patients with relapsed disease were treated with thalidomide. The complete remission rate did not differ significantly between the two groups.

VEGF reduction and clinical improvement

Significant clinical and laboratory improvement could not be detected at 6 months post treatment. However, at 12 months multiple clinical and laboratory parameters significantly improved ([table 2](#)). The extent of improvement in grip strength, serum albumin and compound muscle action potential amplitude of the median nerve were significantly greater in patients with VEGF levels <1040 pg/mL than in patients with serum VEGF \geq 1040 pg/mL at 6 months post treatment ([figure 3](#)). In addition, rate of decrease over the first 6 months post treatment was correlated with the extent of clinical and laboratory improvements at 12 months ([figure 4](#)). These findings suggest that significant clinical and laboratory improvement can be obtained several months after VEGF levels decrease, and that the greater the decrease by 6 months post treatment, the greater the delayed improvement in laboratory findings and clinical outcome. No significant correlations between decreases in VEGF and improvement in performance status, overall neuropathy limitation scale, pleural effusion or creatinine could be detected.

DISCUSSION

We show that serum VEGF levels decreased and reached a plateau over the 6 months following treatment of peripheral blood stem cell transplantation or thalidomide. Patients with normal VEGF levels at 6 months post treatment showed significantly longer relapse-free survival and greater delayed clinical and laboratory

improvements. The rate of reduction in serum VEGF over the first 6 months after treatment correlated with the extent of clinical and laboratory improvement at 12 months. These findings suggest that the extent of reduction in VEGF correlates with improvement of the disease and treatments for POEMS syndrome should aim to decrease serum VEGF within the normal range. In addition, the fact that decreased serum VEGF reached a plateau over 6 months after treatment indicates that at least 6 months are required to determine the effect of treatment, and a change in therapeutic strategy should be considered if VEGF levels do not decrease sufficiently at 6 months post treatment. This is the first study to demonstrate that serum VEGF level can be used as a surrogate biomarker to monitor disease activity and predict clinical outcome of POEMS syndrome. A reliable early predictive marker of long-term outcome will facilitate clinical trials for POEMS syndrome treatment given the inherent difficulty in larger scale prospective studies for such rare and severe diseases.

Since the first demonstration of elevated serum VEGF levels in POEMS syndrome patients,⁷ numerous studies have confirmed that VEGF levels increase in untreated POEMS syndrome and decrease after treatment, implicating elevated VEGF in disease pathophysiology.^{14–19} Indeed, the physiological effects of VEGF, such as vascular hyperpermeability and angiogenesis,⁶ are consistent with the characteristic symptoms of POEMS syndrome (eg, pleural effusion, oedema or angiomas). However, whether lower VEGF levels after treatment represent suppression of the disease itself or a mere epiphenomenon had not been unequivocally demonstrated. The present study clearly shows that the extent of the decreases in VEGF reflects later clinical improvement; a greater reduction at 6 months post treatment predicts better prognosis at 1 year. Moreover, if VEGF levels are suppressed below the upper limit of the normal range, longer remission can be achieved. Therefore, treatment for POEMS should aim to control VEGF within the

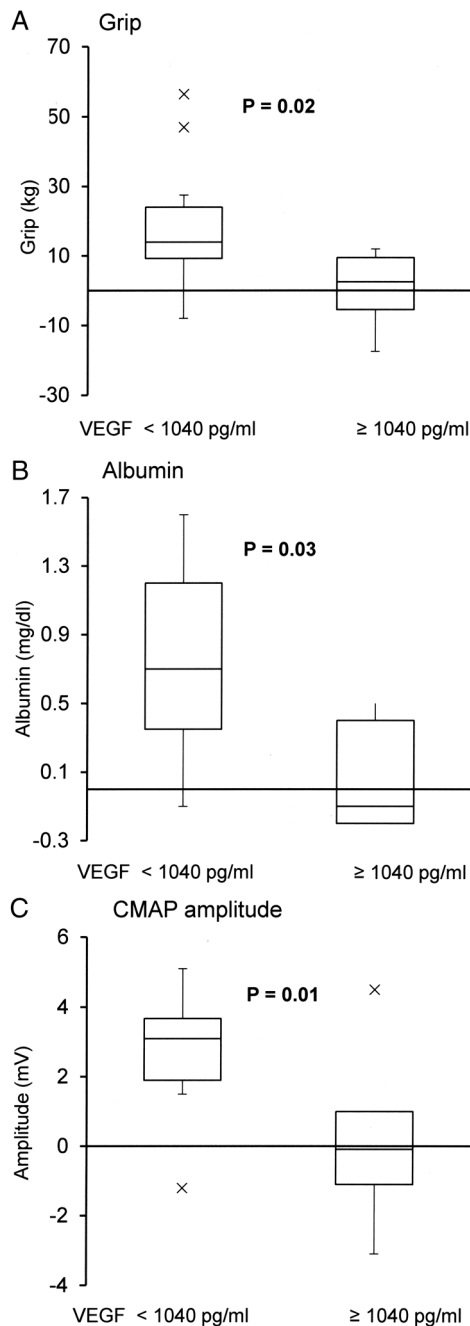


Figure 3 Changes in clinical or laboratory measures at 12 months post treatment. (A) Grip strength. (B) Serum albumin. (C) Compound muscle action potential (CMAP) amplitude of the median nerve. Patients with serum vascular endothelial growth factor (VEGF) <1040 pg/mL at 6 months after treatment showed significant improvements in all parameters compared with patients with VEGF \geq 1040 pg/mL.

normal range. These findings strongly suggest that overproduction of VEGF plays a central role in the pathophysiology of POEMS syndrome.

This retrospective study has several limitations. First, we retrospectively investigated a small number of patients with POEMS with different backgrounds. The difference in mean age of the two groups of studied patients (transplanted and thalidomide treated) may

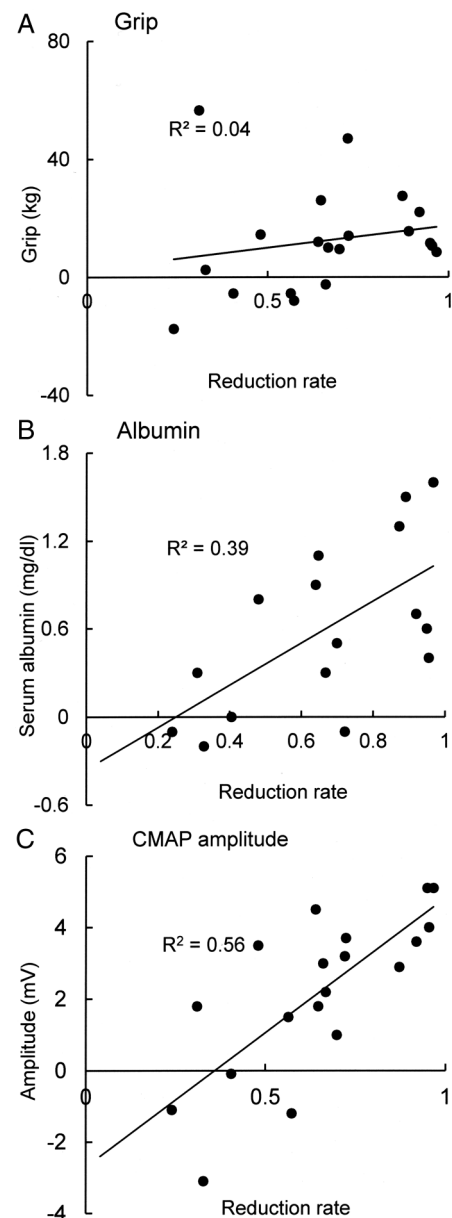


Figure 4 Correlation between reduction rate of vascular endothelial growth factor (VEGF) at 6 months after treatment and changes in grip strength (A), serum albumin (B), and CMAP amplitude of the median nerve (C) at 12 months after treatment. The greater the rate of VEGF decline at 6 months of treatment, the better the clinical and laboratory findings at 12 months.

substantially influence treatment response and VEGF level. However, we aimed to study whether VEGF could be used as a predictive marker, irrespective of the patients' background and treatment modality. We believe that this was achieved by our data. Second, we investigated whether only serum VEGF levels reflect disease activity and prognosis of POEMS syndrome, or whether other proinflammatory cytokines, such as TNF- α , IL-6 and IL-12, are also upregulated during active disease and IL-12 levels decrease after treatment.²¹

Inhibition of VEGF alone by a monoclonal antibody (bevacizumab) does not appear to be effective, particularly in advanced cases,^{22–24} further implicating other proinflammatory factors in disease progression. Future prospective studies are necessary to investigate which cytokines are most appropriate for monitoring disease activity. Third, the present study evaluated serum levels of VEGF, and it is controversial whether serum or plasma VEGF is a better indicator of disease activity.^{11 17 25} While plasma level of VEGF is less affected by platelets, serum VEGF levels can be reflected from the serous and platelet compartments. Since the origin of VEGF in POEMS syndrome has not yet been clarified, VEGF stored in platelets may play an important role in the pathophysiology of POEMS syndrome. Therefore, we consider that monitoring serum VEGF may better indicate the total amount of VEGF in the patient.²⁶ However, further investigations may be required to evaluate the relationship between serum and plasma VEGF levels in the treatment course of POEMS syndrome.

The prognosis for patients with POEMS syndrome was very poor when only corticosteroids were available as treatments.^{3 4} However, a number of case series and reports have demonstrated improved prognosis using treatments originally developed for multiple myeloma.^{12 14 15 18 19} The next step is to perform well designed prospective clinical trials and establish evidence-based therapeutic guidelines.^{12 13} To confirm the efficacy of a therapeutic intervention, so-called hard endpoints are expected, such as overall survival or progression-free survival. However, such studies take several years and require large sample sizes,^{11 27} and are generally not feasible for rare diseases. Surrogate endpoints to assess therapeutic efficacy in a brief period could allow short-term clinical trials involving smaller patient groups. This study demonstrates that serum VEGF at 6 months post treatment can be used as a primary endpoint for POEMS syndrome treatment outcome. In addition, VEGF is suitable for an endpoint of clinical trials from the view point that VEGF measurement is quantitative and objective and can be blinded by measurement at a central laboratory.

Additional agents for multiple myeloma, such as proteasome inhibitors, monoclonal antibodies, cell cycle specific drugs, deacetylase inhibitors and signalling transduction pathway inhibitors will be available in the near future²⁸ and could be applied to POEMS syndrome.¹³ While the adequacy of serum VEGF as a surrogate endpoint needs further confirmation, this marker may facilitate prospective clinical trials on the safety and efficacy of these newer drugs despite the rarity of this syndrome. In fact, we are now conducting a multicentre, double-blind and randomised controlled clinical trial²⁹ to evaluate the efficacy and safety of thalidomide for POEMS syndrome using the rate of VEGF decrease over 6 months post treatment as the primary endpoint (declared and registered to the Japan Pharmaceuticals and Medical Devices Agency).

Contributors SM and YS analysed the data. SM, YS, KK, HH and SK designed the research, collected and wrote the manuscript. SS, MB, FN, KS, YS, YI, KW, HA, CO, MT, ES and CN assisted in data collection and manuscript preparation. All authors approved the final draft of the paper.

Funding This study is supported in part by a Research Grant from the Ministry of Education, Culture, Sports, Science, and Technology of Japan (SM, Kakenhi 23790975).

Competing interests SM is funded by a Grant-in-Aid for Scientific Research from the Ministry of Education, Culture, Sports, Science and Technology of Japan. SK is funded by Grants-in-Aid for Scientific Research from the Ministry of Education, Culture, Sports, Science and Technology of Japan and a Grant-in-Aid for Scientific Research from the Ministry of Health, Labour, and Welfare of Japan, and served as Associate Editor of *Journal of Neurology, Neurosurgery, and Psychiatry*, and as an Editorial Board member of *Journal of the Neurological Sciences*.

Ethics approval The protocol was approved by the institutional review board of Chiba University Graduate School of Medicine.

Provenance and peer review Not commissioned; internally peer reviewed

Data sharing statement No additional data are available.

Open Access This is an Open Access article distributed in accordance with the Creative Commons Attribution Non Commercial (CC BY-NC 4.0) license, which permits others to distribute, remix, adapt, build upon this work non-commercially, and license their derivative works on different terms, provided the original work is properly cited and the use is non-commercial. See: <http://creativecommons.org/licenses/by-nc/4.0/>

REFERENCES

1. Bardwick PA, Zvaifler NJ, Gill GN, *et al.* Plasma cell dyscrasia with polyneuropathy, organomegaly, endocrinopathy, M protein, and skin changes: the POEMS syndrome. Report on two cases and a review of the literature. *Medicine* 1980;59:311–22.
2. Arimura K, Hashiguchi T. Crow–Fukase syndrome: clinical features, pathogenesis and treatment in Japan. In: Yamamura T, Kira J, Tabira T, eds. *Current Topics in Neuroimmunology*. 2007:241–5.
3. Nakanishi T, Sobue I, Toyokura Y, *et al.* The Crow–Fukase syndrome: a study of 102 cases in Japan. *Neurology* 1984;34:712–20.
4. Kuwabara S, Hattori T, Shimoe Y, *et al.* Long term melphalan-prednisolone chemotherapy for POEMS syndrome. *J Neurol Neurosurg Psychiatry* 1997;63:385–7.
5. Iose S, Misawa S, Kanai K, *et al.* POEMS syndrome with Guillain–Barre syndrome-like acute onset: a case report and review of neurological progression in 30 cases. *J Neurol Neurosurg Psychiatry* 2011;82:678–80.
6. Dvorak HF, Brown LF, Detmar M, *et al.* Vascular permeability factor/vascular endothelial growth factor, microvascular hyperpermeability, and angiogenesis. *Am J Pathol* 1995;146:1029–39.
7. Watanabe O, Arimura K, Kitajima I, *et al.* Greatly raised vascular endothelial growth factor (VEGF) in POEMS syndrome. *Lancet* 1996;347:702.
8. Soubrier MJ, Dubost JJ, Sauvezie BJ. POEMS syndrome: a study of 25 cases and a review of the literature. French Study Group on POEMS Syndrome. *Am J Med* 1994;97:543–53.
9. Watanabe O, Maruyama I, Arimura K, *et al.* Overproduction of vascular endothelial growth factor/vascular permeability factor is causative in Crow–Fukase (POEMS) syndrome. *Muscle Nerve* 1998;21:1390–7.
10. Nobile-Orazio E, Terenghi F, Giannotta C, *et al.* Serum VEGF levels in POEMS syndrome and in immune-mediated neuropathies. *Neurology* 2009;72:1024–6.
11. Dispenzieri A. POEMS syndrome: update on diagnosis, risk-stratification, and management. *Am J Hematol* 2012;87:804–14.
12. Kuwabara S, Dispenzieri A, Arimura K, *et al.* Treatment for POEMS (polyneuropathy, organomegaly, endocrinopathy, M-protein, and skin changes) syndrome. *Cochrane Database Syst Rev* 2012;6:CD006828.
13. Misawa S, Kuwabara S. Polyneuropathy, organomegaly, endocrinopathy, monoclonal gammopathy and skin changes (Crow–Fukase) syndrome: diagnostic criteria and treatment perspectives POEMS syndrome. *Clin Exp Neuroimmunol* 2013;4:318–25.

14. Kuwabara S, Misawa S, Kanai K, *et al.* Autologous peripheral blood stem cell transplantation for POEMS syndrome. *Neurology* 2006;66:105–7.
15. Kuwabara S, Misawa S, Kanai K, *et al.* Thalidomide reduces serum VEGF levels and improves peripheral neuropathy in POEMS syndrome. *J Neurol Neurosurg Psychiatry* 2008;79:1255–7.
16. Kuwabara S, Misawa S, Kanai K, *et al.* Neurologic improvement after peripheral blood stem cell transplantation in POEMS syndrome. *Neurology* 2008;71:1691–5.
17. D'Souza A, Hayman SR, Buadi F, *et al.* The utility of plasma vascular endothelial growth factor levels in the diagnosis and follow-up of patients with POEMS syndrome. *Blood* 2011;118:4663–5.
18. Dispenzieri A, Moreno-Aspitia A, Suarez GA, *et al.* Peripheral blood stem cell transplantation in 16 patients with POEMS syndrome, and a review of the literature. *Blood* 2004;104:3400–7.
19. Dispenzieri A, Klein CJ, Mauermann ML. Lenalidomide therapy in a patient with POEMS syndrome. *Blood* 2007;110:1075–6.
20. Rajkumar SV, Harousseau JL, Durie B, *et al.*, International Myeloma Workshop Consensus Panel 1. Consensus recommendations for the uniform reporting of clinical trials: report of the International Myeloma Workshop Consensus Panel 1. *Blood* 2011;117:4691–5.
21. Kanai K, Sawai S, Sogawa K, *et al.* Markedly upregulated serum interleukin-12 as a novel biomarker in POEMS syndrome. *Neurology* 2012;79:575–82.
22. Straume O, Bergheim J, Ernst P. Bevacizumab therapy for POEMS syndrome. *Blood* 2006;107:4972–3.
23. Samaras P, Bauer S, Stenner-Liewen F, *et al.* Treatment of POEMS syndrome with bevacizumab. *Haematologica* 2007;92:1438–9.
24. Sekiguchi Y, Misawa S, Shibuya K, *et al.* Ambiguous effects of anti-VEGF monoclonal antibody (bevacizumab) for POEMS syndrome. *J Neurol Neurosurg Psychiatry* 2013;84:1346–8.
25. Tokashiki T, Hashiguchi T, Arimura K, *et al.* Predictive value of serial platelet count and VEGF determination for the management of DIC in the Crow–Fukase (POEMS) syndrome. *Intern Med* 2003;42:1240–3.
26. Hashiguchi T, Arimura K, Matsumuro K, *et al.* Highly concentrated vascular endothelial growth factor in platelets in Crow–Fukase syndrome. *Muscle Nerve* 2000;23:1051–6.
27. Dispenzieri A, Kyle RA, Lacy MQ, *et al.* POEMS syndrome: definitions and long-term outcome. *Blood* 2003;101:2496–506.
28. Ocio EM, Richardson PG, Rajkumar SV, *et al.* New drugs and novel mechanisms of action in multiple myeloma in 2013: a report from the International Myeloma Working Group (IMWG). *Leukemia* 2014;28:525–42.
29. Katayama K, Misawa S, Sato Y, *et al.* Japanese POEMS syndrome with Thalidomide (J-POST) Trial: study protocol for a phase II/III multicentre, randomised, double-blind, placebo-controlled trial. *BMJ Open* 2015;5:e007330.