

Circulating immune complexes of A β and IgM in plasma of patients with Alzheimer's disease

Andrea Marcello · Oliver Wirths · Thomas Schneider-Axmann ·
Malin Degerman-Gunnarsson · Lars Lannfelt · Thomas A. Bayer

Received: 23 January 2009 / Accepted: 21 March 2009 / Published online: 5 May 2009
© The Author(s) 2009. This article is published with open access at Springerlink.com

Abstract It has previously been shown that immune complexes (IC) of a given biomarker with class M immunoglobulins (IgM) provide better performances compared to the unbound biomarker in a number of cancer entities. In the present work, we investigated IC of IgM-A β as a potential biomarker for Alzheimer's disease (AD). A β -IgM concentration has been measured in 75 plasma samples from patients with AD, individuals with mild cognitive impairment (MCI), and healthy age- and sex-matched controls (HC). To characterize the fractions associated with A β , pooled plasma samples were subjected to gel-filtration analysis. Size-separated fractions were analyzed for the presence of A β using a sandwich ELISA assay. A strong reactivity was observed in the high molecular weight IgM (>500 kDa) and 150 kDa (IgG) fractions indicating that blood A β is strongly associated with antibodies. Using an ELISA assay detecting A β -IgM complexes, we observed that high levels of A β -IgMs were detectable in HC and MCI patients; however, there was no significant difference to the AD group.

Keywords Alzheimer's disease · Immune complexes · A β · Biomarkers · Plasma

Introduction

The earliest pathological events leading to Alzheimer's disease (AD) are estimated to occur 10–20 years before the appearance of the first cognitive changes in affected patients (Price and Morris 1999; Yamaguchi et al. 2001). Therefore, identification of biomarkers predictive for AD might allow screening for individuals who may benefit from preventive therapies before the development of cognitive impairment. The A β 42 peptide is supposed to have a central role in the pathogenesis of AD (Hardy and Selkoe 2002), and its measurement in the cerebrospinal fluid (CSF) became nowadays a routine diagnostic procedure with 75–95% sensitivity and specificity (Blennow 2004; Jensen et al. 1999; Lewczuk et al. 2004). Unfortunately, CSF and blood levels of A β do not correlate, neither in AD patients (Mehta et al. 2001) nor in healthy controls (Mehta and Pirttila 2005). On the other side, it has been also shown that there is a correlation between CSF and plasma levels of A β 40 and A β 42 in healthy individuals, whereas no such correlation could be seen for AD or MCI cases (Giedraitis et al. 2007).

Studies on plasma A β levels have shown contradictory results, ranging from increased A β 40 and decreased A β 42 in AD patients compared to healthy controls (Xu and Gaskin 2008), no differences (Fukumoto et al. 2003; Vanderstichele et al. 2000) or increased A β 42 in AD patients (Matsubara et al. 1999). The different findings in these studies may be due to differences in study designs, including variations in age and disease severity of included subjects. A longitudinal study showed that plasma A β 40

A. Marcello · O. Wirths · T. Schneider-Axmann · T. A. Bayer
Department of Psychiatry, University Medicine Goettingen,
Göttingen, Germany

M. Degerman-Gunnarsson · L. Lannfelt
Department of Public Health and Geriatrics,
Uppsala University Hospital, Uppsala, Sweden

T. A. Bayer (✉)
Division of Molecular Psychiatry, Department of Psychiatry
and Psychotherapy, University Medicine Goettingen,
von-Siebold-Strasse 5, 37075 Göttingen, Germany
e-mail: tbayer@gwdg.de

and A β 42 levels measured at age 70 years were not significantly associated with incident AD (Sundelof et al. 2008). All of the studies though, have shown substantial overlap in plasma A β 40 and A β 42 levels between patients and controls, thus limiting the diagnostic value of plasma A β assessment. Although the significance of A β for diagnosing Alzheimer's disease is controversial, high plasma concentrations of A β 40 and low plasma concentrations of A β 42 indicate an increased risk of dementia (reviewed in Kawarabayashi and Shoji 2008). Nonetheless, analysis of plasma instead of CSF would be highly desirable because of its better accessibility and less invasive sampling procedure. Plasma A β levels are commonly quantified with enzyme-linked immunoabsorbent assays (ELISA) using antibodies against a variety of A β epitopes (for example Mehta et al. 2000; Suzuki et al. 1994). Quantification of A β in blood is technically difficult and limited by the fact that most of it is bound to blood components, including lipids serum albumin, α 2-macroglobulin, immunoglobulins, apolipoprotein J, transthyritin, apoferritin, as well as complement components C1q and C3 (Biere et al. 1996; Kuo et al. 2000).

Besides the detection of biochemical AD markers, autoimmune responses to molecules specific to AD pathology have become a current research focus (Gruden et al. 2004; Nath et al. 2003). There seems to be a reduction in the magnitude of lymphocyte stimulation by APP in AD patients (Trieb et al. 1996), and naturally occurring anti-A β antibodies seem to be present in sera and CSF of AD patients and healthy controls (Du et al. 2001). However, whether autoimmunity plays a direct role in the pathogenesis of AD is still open to debate (McGeer and McGeer 2001; Singh 1997; Tarkowski et al. 2003).

In the present study, the level of circulating immune complexes (ICs) between A β and class M immunoglobulins (IgM) has been investigated, because ICs have been shown to be relevant biomarkers for different types of cancers (Beneduce et al. 2005, 2006; Castaldi et al. 2005), showing an improved diagnostic power compared to the free biomarker protein.

Materials and methods

Patients and samples

Plasma samples (stored at -70°C) from 30 out-patients with mild to moderate AD, 15 patients with mild cognitive impairment (MCI) and 30 healthy controls (HC) were analyzed. The patients were recruited at the Memory Clinic at the Department of Geriatrics, Uppsala University Hospital. All AD patients were diagnosed according to DSM IV (American Psychiatric Association 2000) and NINCDS-

ADRDA (McKhann et al. 1984). The MCI patients met the Petersen criteria (Winblad et al. 2004) for MCI.

Gel filtration

Plasma samples from five AD patients and five healthy controls showing high reactivity to A β -IgM immune complexes in a preliminary assay were grouped and analyzed by gel-filtration HPLC. 500 μl of pooled samples were analyzed using a gel-filtration column Superdex 200 10/300 GL (GE Healthcare, Freiburg, Germany) on an ACTA Basic system (GE Healthcare, Freiburg, Germany). The elution was carried out in PBS at a flow rate of 1 ml per minute, and sample absorbance was monitored at 280 nm. Fractions were collected every 30 s, immunoreactivity was tested by ELISA and the fractions corresponding to the highest immunoreactivity were pooled and used as reference standard. Before running the samples, a calibration run was carried out according to the manufacturer's instructions.

ELISA assay to detect A β

The A β level in gel-filtration fractions was determined as follows: 96-well ELISA plates were coated with 50 μl per well of 1 $\mu\text{g}/\text{ml}$ of mouse anti-human A β antibody directed against residues 17-24 (4G8, Signet Laboratories, Dedham, MA, USA) in PBS at 4°C overnight and then blocked for 2 h with 3% BSA in PBS at 37°C . After blocking, 50 μl of gel-filtration fractions in PBS containing 1% BSA and 0.05% Tween 20 (PBS-B-T) were incubated for 1.5 h at 37°C . The wells were then washed with PBS containing 0.05% Tween 20 and incubated with 50 μl of rabbit polyclonal anti-A β 692 (generous gift from Gerd Multhaup, Free University of Berlin) at a 1:1,000 dilution in PBS-B-T for 1.5 h at 37°C . A β was revealed using peroxidase-conjugated goat anti-rabbit IgG (Dako, Glostrup, Denmark) in a 1:1,000 dilution in PBS-B-T and developed with TMB (Pierce manufacturing, Appleton, IL, USA) and hydrogen peroxide as substrate. The results of A β determination in the gel-filtration fractions were reported in optical density.

ELISA assay to detect A β -IgM immune complexes

96-well ELISA plates were coated with 50 μL per well of 1 $\mu\text{g}/\text{mL}$ 4G8 antibody (Signet Laboratories, Dedham, MA, USA) in PBS at 4°C overnight and then blocked for 2 h with 3% BSA in PBS. After blocking, 50 μl of serially diluted reference standard or samples in PBS-B-T were incubated for 1.5 h at 37°C . The A β -IgM complex was revealed using peroxidase-conjugated anti-human IgM (Sigma-Aldrich, Munich, Germany) at a dilution of 1:3,000

Table 1 Demographic data of the studied groups

	AD		MCI		HC		Chi ²	df	P
Gender (male, female)	M: 12, F: 18		M: 8, F: 7		M:11, F: 19		1.2	2	0.55
Dementia in family	Yes: 16, no: 12		Yes: 6, no: 8				0.8	1	0.38
	n	m \pm SD	n	m \pm SD	n	m \pm SD	F	df	P
Age (years)	30	72.3 \pm 6.7	15	73.7 \pm 4.3	30	72.5 \pm 5.2	0.3	2, 72	0.74
Age at onset (years)	30	67.9 \pm 7.9	14	71.4 \pm 4.9			2.3	1, 42	0.13
MMSE (at screening)	27	17.3 \pm 6.1	15	27.9 \pm 1.3			44.3	1, 40	<0.0005

AD Alzheimer's disease, MCI mild cognitive impaired individuals, HC healthy controls, *m* mean, *SD* standard deviation, *Chi*² Chi-square statistic, *F* F-statistic, *df* degrees of freedom, *P* probability, *M* male, *F* female

in PBS-B-T and developed with TMB and hydrogen peroxide as the substrate. A β -IgM IC levels in the plasma were expressed in arbitrary units/ml (AU/ml) by using gel-filtration-purified A β -IgM reference standards to design a calibration curve, where the undiluted standard was assigned 1,000 AU/ml; concentration was determined by interpolation of samples absorbance on the calibration curve. The linear range of the assay was between 3.9 and 62.5 AU/ml. The samples with values above 62.5 AU/ml were further diluted and re-measured. The assay was standardized and its analytical performance evaluated: inter- and intra-assay coefficient of variation (CV) was less than 10%. A β -IgM cut-off was selected as the best combination of specificity and sensitivity according to the receiver-operating characteristic (ROC) curve.

Western blot

Gel-filtration fractions corresponding to 280 nm absorbance peaks were separated on a 4–12% variogel (Anamed, Groß-Bieberau, Germany) and then transferred to a nitrocellulose membrane. The membrane was heated in PBS in a microwave for 5 min and then blocked in 10% non-fat dry milk in TBS containing 0.05% Tween (TBS-T) for 1 h at room temperature. Blots were then incubated with peroxidase-conjugated goat anti-human IgM (Sigma-Aldrich) at 1:1,000 in TBS-T for 2 h or, alternatively, with a primary antibody directed against A β residues 4–10 (W0-2, The Genetics Company, Switzerland) overnight at 4°C and secondary peroxidase-conjugated antibodies for 2 h at room temperature. Protein bands were revealed using chemiluminescence solution and peroxide hydrogen as substrates on a Curix60 developing machine (Agfa-Gevaert N.V., Mortsel, Belgium).

Data analysis

All biomarker values were expressed as mean values \pm standard deviation. Differences between the groups were determined by ANOVA followed by Student *t* tests.

The diagnostic powers were determined by ROC curve analysis. Chi-square test on independence was used to analyze, if the gender distribution was significantly different between the three groups and if there is a difference between the two patient groups in relation to the number of family members with dementia. All analyses were performed using GraphPad Prism (GraphPad software, Inc., La Jolla, CA, USA and SPSS 16 for Windows). Significance level was $\alpha = 0.05$. All tests were two-tailed.

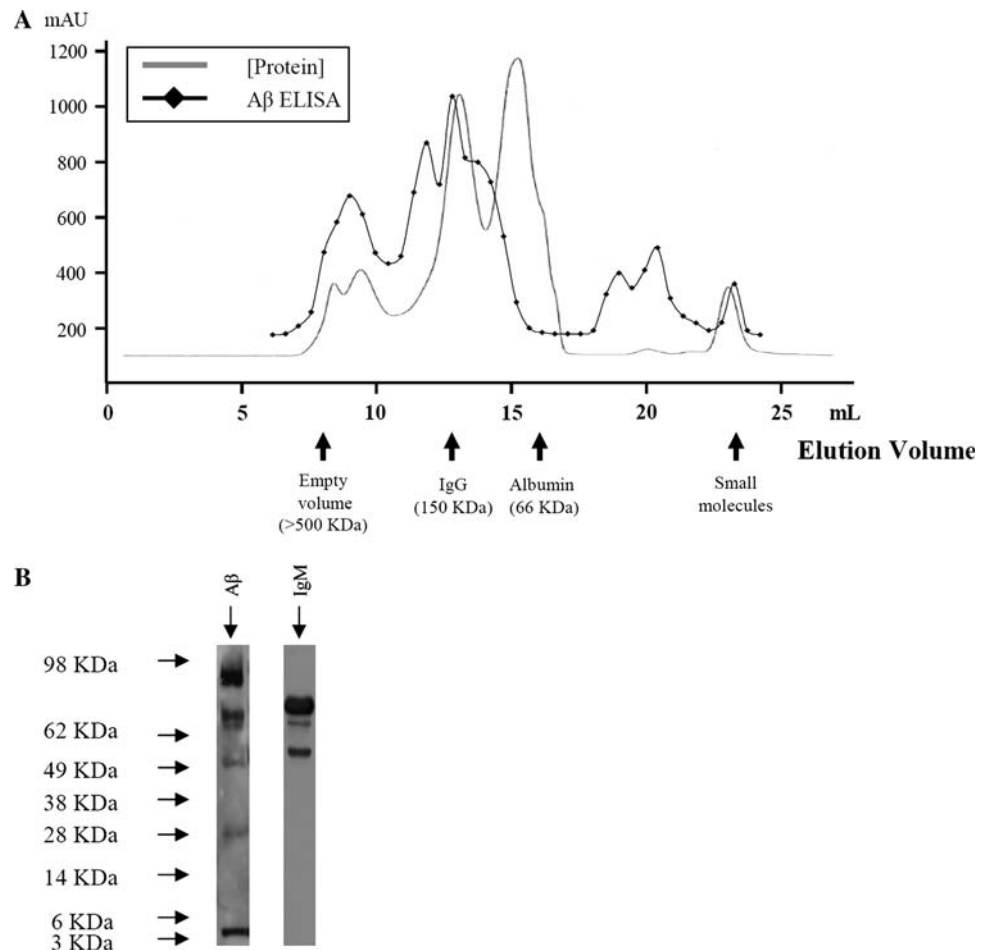
Results

There were no significant age differences between the three groups [Alzheimer patients (AD), MCI and healthy controls] ($F = 0.3$, $df = 2$, 72; $P = 0.74$). Patients with MCI diagnosis were not significantly older at onset of the disease than AD patients ($F = 2.3$, $df = 1$, 42; $P = 0.13$). As expected, the mean MMSE score was higher in MCI compared to AD patients ($F = 44.3$, $df = 1$, 40; $P < 0.0005$). Gender distribution was not significantly different between the three groups ($\text{Chi}^2 = 1.2$, $df = 2$; $P = 0.55$) and the proportion of family members with dementia did not differ significantly between the two patients groups ($\text{Chi}^2 = 0.8$, $df = 1$; $P = 0.38$) (Table 1).

In order to identify circulating A β -IgM complexes, plasma samples from ten individuals were pooled and analyzed by gel filtration. Fractions collected from the column were tested for the presence of generic A β and A β -IgM complexes using ELISA assays. A strong immunoreactivity against A β was observed in the fraction eluting at high molecular weight (>500 kDa) (Fig. 1a). In the same fraction high reactivity for ICs of A β with IgM was also found, thus providing the first evidence of the occurrence of circulating A β -IgM complexes (Fig. 2c). Reactivity for generic A β was also found in the fractions eluting at 150 kDa (IgG fraction) and at low molecular weight (not shown). Reactivity against the monomeric form of A β has been found in all fractions, confirming previous observations (Kuo et al. 2000). The fractions contained components

Fig. 1 a Gel-filtration HPLC of pooled plasma samples. Proteins are separated according to their molecular weight, with the larger proteins eluting first. Total protein concentration of each fraction was measured at 280 nm (gray line). The characteristic peaks were as follows: empty volume with a MW > 500 kDa (IgMs), IgGs with a MW of ~150 kDa, and the albumin peak at ~66 kDa. A direct ELISA performed on each fraction to measure the quantity of generic A β (diamonds) shows that most of A β elutes in the empty volume and IgG fractions suggesting that A β in the blood is strongly associated with antibodies.

b Western blot against A β in the empty volume (IgM) fraction and IgM showing the presence of A β in the IgM fraction



migrating at the expected molecular weight for reduced IgM that were stained by antihuman IgM antibodies (Fig. 1b).

To assess the relevance of these findings, plasma samples from 75 patients with AD, MCI, and from healthy donors were analyzed for the presence of A β -IgM ICs. Serial dilutions of the gel filtration-purified IC fraction have been used to draw a reference calibration curve. By interpolation with the standard curve, A β -IgM IC concentration in the plasma samples has been expressed in arbitrary units (AU)/ml. According to ANOVA test, no significant differences among the three diagnostic groups were observed (Student *t* test *P* value AD vs. HC = 0.18, AD vs. MCI = 0.61, MCI vs. HC = 0.10) (Fig. 3).

ROC curve analysis showed that specificity was only 46.67% when sensitivity was set at 80%, and by setting specificity above 80%, sensitivity was 26.67% (Table 2).

Discussion

The aim of the present study was to analyze the serological profile of samples from AD and MCI patients, and healthy

controls, regarding the levels of A β -IgM complexes, and to evaluate a possible correlation between the immunological profiles of individuals with AD. Immune complexes, in fact, have recently been proven to correlate better than unbound biomarkers with pathology in different cancer entities (Beneduce et al. 2005, 2007, 2008; Castaldi et al. 2005), which are characterized by an over- or mis-production of an endogenous protein. At present, only CSF A β 42 levels is a well established A β -related AD biomarker with high sensitivity and specificity (Andreasen et al. 2001; Galasko et al. 1998; Kanai et al. 1998; Lewczuk et al. 2004; Tapiola et al. 2000). Unfortunately, there seems to be no correlation between CSF and blood A β level, as shown by several groups (Matsumoto et al. 2007; Mehta et al. 2000, 2001; Vanderstichele et al. 2000). A longitudinal study showed that CSF A β 42 decreases within 12 months significantly in AD patients, while Tau and Phospho-Tau did not (Kessler et al. 2008). Although much better for clinical practice, blood-based A β levels are controversially discussed as a useful biomarker for AD. Studies have shown a decreased level of A β in AD subjects (Pesaresi et al. 2006; Xu and Gaskin 2008), while others showed an

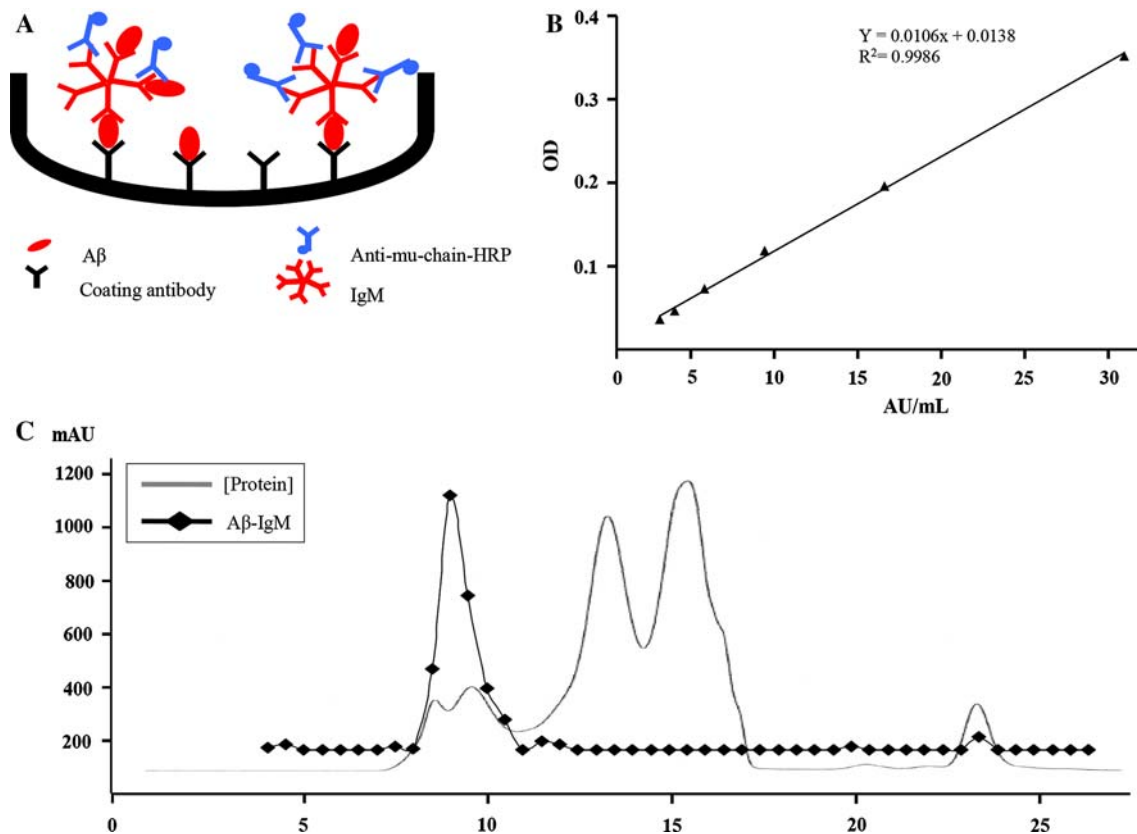


Fig. 2 **a** Sandwich ELISA. 96-well titer plates are coated with anti-A β (4G8). After incubation with plasma samples, the wells are washed and incubated with an anti-IgM heavy chain antibody conjugated with HRP. Signal of bound molecules is therefore only

produced by complexes of both IgM and antigen. **b** Calibration curve obtained by serial dilutions of the IgM fraction. **c** A β -IgM (diamonds) immune complexes in the fractions derived from gel-filtration HPLC compared to total protein concentration (solid line)

increase of A β concentration in the plasma of AD patients (Kosaka et al. 1997; Matsubara et al. 1999), or no statistical differences (Fukumoto et al. 2003; Tamaoka et al. 1996). The same inconsistency emerged from a series of prospective studies, in which a higher risk for developing AD has been associated both with higher baseline plasma A β 42 concentration (Pomara et al. 2005) or higher A β 40 with no effect on A β 42 (van Oijen et al. 2006). Finally, Graff-Radford et al. (2007) linked a high risk for developing AD to a lower A β 42/40 ratio. Plasma anti-A β autoantibody concentration has also been investigated by several groups. Titers of anti-A β 42 autoantibodies were reported to be lower in AD patients compared to healthy individuals (Du et al. 2001; Weksler et al. 2002), or higher in AD patients (Nath et al. 2003). One study reported no correlation between autoantibodies titers and plasma A β 40 or 42 levels (Hyman et al. 2001).

The initial goal of this study was to characterize the occurrence of ICs of A β in the plasma of AD and MCI patients and HC, as seen with many cancer biomarkers. It is well known that IgM complexes are in equilibrium in blood with the unbound respective antigen and are used as reliable blood biomarkers for diagnosis of different cancer

entities. It would make sense that the same equilibrium holds true for any IgM complex in blood. Already established immune complexes as biomarkers include: PSA-IgM for prostate cancer (Beneduce et al. 2007), carcino-embryonic antigen-IgM for colorectal cancer (Castaldi et al. 2005) alpha fetoprotein-IgM and squamous cell carcinoma antigen-IgM for liver cancer (Beneduce et al. 2004, 2005). Moreover, IgM immune complexes have also been shown to be uncorrelated with basal IgM levels (Beneduce 2008). Nydegger (2007) discussed in a review article biochemical properties of immune complexes in general, their formation and their equilibrium state, stating that immune complex interaction is extremely high compared to other biochemical interactions.

Plasma samples from 30 AD patients, 15 MCI patients, and 30 age- and sex-matched HC have been analyzed to determine the levels of circulating A β -IgM ICs. After gel-filtration and size fractionation, A β was primarily found to be associated with the IgM and the IgG fractions using an ELISA. This is the first characterization of circulating A β -IgM complexes in AD. The A β -IgM assay did not show any significant difference among the three groups, in contrast with previous findings (Gruden et al. 2007),

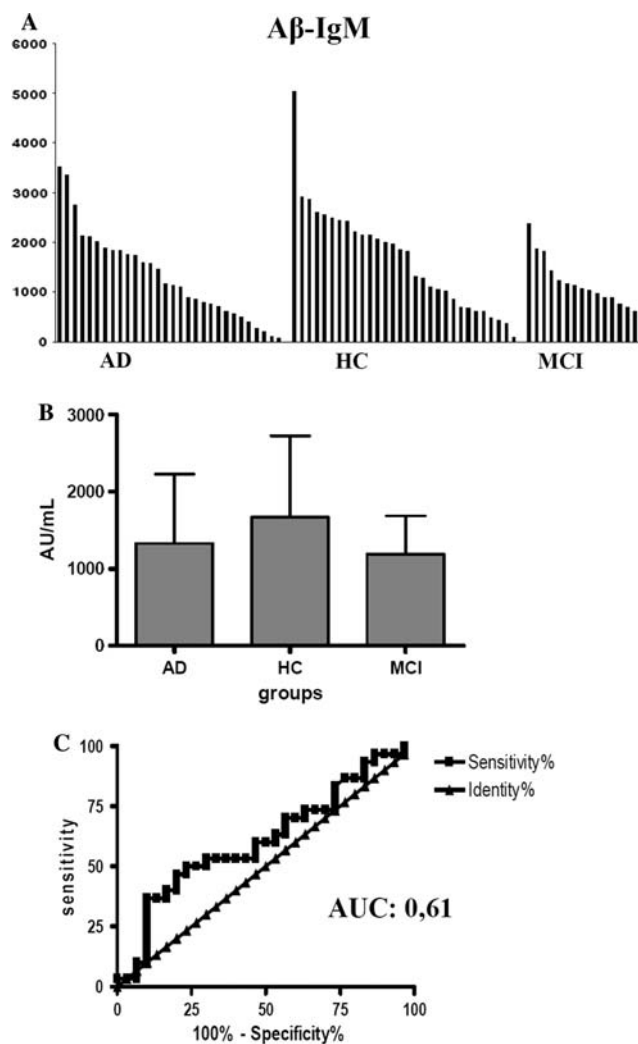


Fig. 3 Analysis of $A\beta$ -IgM immune complexes. **a** Levels of $A\beta$ -IgM immune complexes in the different diagnostic groups. **b** The comparison of the mean values do not show any significant difference. **c** ROC curve analysis shows a certain difference in the distribution of the immune complexes plasma concentration between AD and HC groups, which however was not significant

Table 2 Comparison of specificity, sensitivity, positive predictive value (PPV = true positive (TP)/TP + false positive), negative predictive value (NPV = true negative (TN)/TN + false negative) of $A\beta$ -IgM comparing AD patients with the healthy control (HC) group

Biomarker	Cut-off (AU/mL)	Sensitivity	Specificity	PPV	NPV
$A\beta$ -IgM	<1926	80% (24/30)	46.67% (16/30)	60%	70%
	<648.5	26.67% (8/30)	80% (6/30)	57%	52%

proving that although there is great interest around autoimmunity in AD, IC levels cannot be used as a diagnostic marker. It should be noted, however, that variability of IC level was high within the groups. This high variance leading to an overlap between AD patients and healthy

controls might be partly due to biological variability. Consensus criteria for a suitable biomarker (Trojanowski et al. 1998) for AD were however not met.

On the other hand, the presence of circulating ICs against neuronal antigens supports the notion that autoimmune-mediated processes may be involved in neurodegenerative disorders. Further investigations are needed to elucidate the pathophysiological role of these complexes and the significance of autoantibodies in AD in general. Whether their role is neuroprotective or neurotoxic is still unknown. They may be seen both as a possible protective factor for AD, or as a risk factor in case of an unbalanced level. In any case, autoimmunity-driven homeostasis is a natural process and its understanding may be useful in both diagnosing and treating AD; there are evidences for a therapeutic use of anti- $A\beta$ antibodies as it is being shown by current experimental immunotherapeutic approaches. Hock et al. (2003) showed that active immunization against aggregated $A\beta_{42}$ led to a slower cognitive decline in a dose-dependent fashion; patients generating a higher titer of anti- $A\beta$ antibodies performed better in cognitive test than patients who did not respond to the immunization protocol. The increase in antibody titer did not correspond to a decrease in $A\beta$ blood levels. In contrast, significant changes were observed in serum and CSF of patients with AD after treatment with intravenous $A\beta$ IgGs (Dodel et al. 2002).

The levels of $A\beta$ autoantibodies of the IgG class for monitoring the effect of passive or active immunization in AD have already been evaluated by recent studies. It is speculative to discuss a possible role of $A\beta$ -IgM levels as a predictive indicator of immunotherapy efficacy. A possible hypothesis includes that they serve as a “buffering system” to keep free potential toxic endogenous peptides and proteins under homeostatic control and lead to their clearance (Gruden et al. 2007). Previous studies have shown the presence of anti- $A\beta$ autoantibodies (Xu and Gaskin 1997) and circulating IC of $A\beta$ and IgGs of different classes (Gruden et al. 2004). APP transgenic mice injected intravenously with monoclonal anti- $A\beta$ antibody showed a rapid and massive increase of CNS-derived $A\beta$ in the plasma suggesting that antibodies may participate in $A\beta$ clearance from the brain (DeMattos et al. 2001). However, whether this immune activity is defensive or toxic is still a matter of debate (Geylis et al. 2005; Nath et al. 2003; Woulfe et al. 2002). It will be interesting to evaluate in future studies possible relationships of $A\beta$ -IC levels with the clinical development of MCI patients, and with AD patients’ response to immune therapies.

Acknowledgments The excellent technical help of Petra Tucholla is gratefully acknowledged. Financial support was provided by the European Commission, Marie Curie Early Stage Training, MEST-

CT-2005-020013 (NEURAD), International Alzheimer Ph.D. Graduate School.

Open Access This article is distributed under the terms of the Creative Commons Attribution Noncommercial License which permits any noncommercial use, distribution, and reproduction in any medium, provided the original author(s) and source are credited.

References

- American Psychiatric Association (2000) Diagnostic and statistical manual of mental disorders—DSM-IV, 4th edn. American Psychiatric Association, Washington
- Andreassen N, Minthon L, Davidsson P, Vanmechelen E et al (2001) Evaluation of CSF-tau and CSF-A β 42 as diagnostic markers for Alzheimer disease in clinical practice. *Arch Neurol* 58(3):373–379
- Beneduce L, Castaldi F, Marino M, Tono N et al (2004) Improvement of liver cancer detection with simultaneous assessment of circulating levels of free alpha-fetoprotein (AFP) and AFP-IgM complexes. *Int J Biol Markers* 19(2):155–159
- Beneduce L, Castaldi F, Marino M, Quarta S et al (2005) Squamous cell carcinoma antigen-immunoglobulin M complexes as novel biomarkers for hepatocellular carcinoma. *Cancer* 103(12):2558–2565
- Beneduce L, Prayer-Galetti T, Giustinian AM, Gallotta A et al (2007) Detection of prostate-specific antigen coupled to immunoglobulin M in prostate cancer patients. *Cancer Detect Prev* 31(5):402–407
- Beneduce L, Pesce G, Gallotta A, Zampieri F et al (2008) Tumour-specific induction of immune complexes: DCP-IgM in hepatocellular carcinoma. *Eur J Clin Invest* 38(8):571–577
- Biere AL, Ostaszewski B, Stimson ER, Hyman BT et al (1996) Amyloid beta-peptide is transported on lipoproteins and albumin in human plasma. *J Biol Chem* 271(51):32916–32922
- Blennow K (2004) Cerebrospinal fluid protein biomarkers for Alzheimer's disease. *NeuroRx* 1(2):213–225
- Castaldi F, Marino M, Beneduce L, Belluco C et al (2005a) Detection of circulating CEA-IgM complexes in early stage colorectal cancer. *Int J Biol Markers* 20(4):204–208
- Castaldi F, Marino M, Beneduce L, Belluco C et al (2005b) Detection of circulating CEA-IgM complexes in early stage colorectal cancer Squamous cell carcinoma antigen-immunoglobulin M complexes as novel biomarkers for hepatocellular carcinoma. *Int J Biol Markers* 20(4):204–208
- DeMattos RB, Bales KR, Cummins DJ, Dodart JC et al (2001) Peripheral anti-A beta antibody alters CNS and plasma A beta clearance and decreases brain A beta burden in a mouse model of Alzheimer's disease. *Proc Natl Acad Sci USA* 98(15):8850–8855
- Dodel R, Hampel H, Depboylu C, Lin S et al (2002) Human antibodies against amyloid beta peptide: a potential treatment for Alzheimer's disease. *Ann Neurol* 52(2):253–256
- Du Y, Dodel R, Hampel H, Buerger K et al (2001) Reduced levels of amyloid beta-peptide antibody in Alzheimer disease. *Neurology* 57(5):801–805
- Fukumoto H, Tennis M, Locascio JJ, Hyman BT et al (2003) Age but not diagnosis is the main predictor of plasma amyloid beta-protein levels. *Arch Neurol* 60(7):958–964
- Galasko D, Chang L, Motter R, Clark CM et al (1998) High cerebrospinal fluid tau and low amyloid beta42 levels in the clinical diagnosis of Alzheimer disease and relation to apolipoprotein E genotype. *Arch Neurol* 55(7):937–945
- Geylis V, Kourilov V, Meiner Z, Nennesmo I et al (2005) Human monoclonal antibodies against amyloid-beta from healthy adults. *Neurobiol Aging* 26(5):597–606
- Giedraitis V, Sundelof J, Irizarry MC, Garevik N et al (2007) The normal equilibrium between CSF and plasma amyloid beta levels is disrupted in Alzheimer's disease. *Neurosci Lett* 427(3):127–131
- Graff-Radford NR, Crook JE, Lucas J, Boeve BF et al (2007) Association of low plasma A β 42/A β 40 ratios with increased imminent risk for mild cognitive impairment and Alzheimer disease. *Arch Neurol* 64(3):354–362
- Gruden MA, Davudova TB, Malisaukas M, Zamotin VV et al (2004) Autoimmune responses to amyloid structures of A β (25–35) peptide and human lysozyme in the serum of patients with progressive Alzheimer's disease. *Dement Geriatr Cogn Disord* 18(2):165–171
- Gruden MA, Davidova TB, Malisaukas M, Sewell RD et al (2007) Differential neuroimmune markers to the onset of Alzheimer's disease neurodegeneration and dementia: autoantibodies to A β (25–35) oligomers, S100b and neurotransmitters. *J Neuroimmunol* 186(1–2):181–192
- Hardy J, Selkoe DJ (2002) The amyloid hypothesis of Alzheimer's disease: progress and problems on the road to therapeutics. *Science* 297(5580):353–356
- Hock C, Konietzko U, Streffer JR, Tracy J et al (2003) Antibodies against beta-amyloid slow cognitive decline in Alzheimer's disease. *Neuron* 38(4):547–554
- Hyman BT, Smith C, Buldyrev I, Whelan C et al (2001) Autoantibodies to amyloid-beta and Alzheimer's disease. *Ann Neurol* 49(6):808–810
- Jensen M, Schroder J, Blomberg M, Engvall B et al (1999) Cerebrospinal fluid A beta42 is increased early in sporadic Alzheimer's disease and declines with disease progression. *Ann Neurol* 45(4):504–511
- Kanai M, Matsubara E, Isoe K, Urakami K et al (1998) Longitudinal study of cerebrospinal fluid levels of tau, A beta1–40, and A beta1–42(43) in Alzheimer's disease: a study in Japan. *Ann Neurol* 44(1):17–26
- Kawarabayashi T, Shoji M (2008) Plasma biomarkers of Alzheimer's disease. *Curr Opin Psychiatry* 21(3):260–267
- Kessler H, Pajonk FG, Bach D, Schneider-Axmann T et al (2008) Effect of copper intake on CSF parameters in patients with mild Alzheimer's disease: a pilot phase 2 clinical trial. *J Neural Transm* 115(12):1651–1659
- Kosaka T, Imagawa M, Seki K, Arai H et al (1997) The beta APP717 Alzheimer mutation increases the percentage of plasma amyloid-beta protein ending at A beta42(43). *Neurology* 48(3):741–745
- Kuo YM, Kokjohn TA, Kalback W, Luehrs D et al (2000a) Amyloid-beta peptides interact with plasma proteins and erythrocytes: implications for their quantitation in plasma. *Biochem Biophys Res Commun* 268(3):750–756
- Kuo YM, Kokjohn TA, Kalback W, Luehrs D et al (2000b) Amyloid-beta peptides interact with plasma proteins and erythrocytes: implications for their quantitation in plasma. *Biochem Biophys Res Commun* 268(3):750–756
- Lewczuk P, Esselmann H, Otto M, Maler JM et al (2004) Neurochemical diagnosis of Alzheimer's dementia by CSF A β 42, A β 42/A β 40 ratio and total tau. *Neurobiol Aging* 25(3):273–281
- Matsubara E, Ghiso J, Frangione B, Amari M et al (1999) Lipoprotein-free amyloidogenic peptides in plasma are elevated in patients with sporadic Alzheimer's disease and Down's syndrome. *Ann Neurol* 45(4):537–541
- Matsumoto Y, Yanase D, Noguchi-Shinohara M, Ono K et al (2007) Blood-brain barrier permeability correlates with medial temporal lobe atrophy but not with amyloid-beta protein transport across

- the blood–brain barrier in Alzheimer’s disease. *Dement Geriatr Cogn Disord* 23(4):241–245
- McGeer PL, McGeer EG (2001) Inflammation, autotoxicity and Alzheimer disease. *Neurobiol Aging* 22(6):799–809
- McKhann G, Drachman D, Folstein M, Katzman R et al (1984) Clinical diagnosis of Alzheimer’s disease: report of the NINCDS-ADRDA Work Group under the auspices of Department of Health and Human Services Task Force on Alzheimer’s Disease. *Neurology* 34(7):939–944
- Mehta PD, Pirttila T (2005) Increased cerebrospinal fluid A beta38/A beta42 ratio in Alzheimer disease. *Neurodegener Dis* 2(5):242–245
- Mehta PD, Pirttila T, Mehta SP, Sersen EA et al (2000) Plasma and cerebrospinal fluid levels of amyloid beta proteins 1-40 and 1-42 in Alzheimer disease. *Arch Neurol* 57(1):100–105
- Mehta PD, Pirttila T, Patrick BA, Barshatzky M et al (2001) Amyloid beta protein 1-40 and 1-42 levels in matched cerebrospinal fluid and plasma from patients with Alzheimer disease. *Neurosci Lett* 304(1–2):102–106
- Nath A, Hall E, Tuzova M, Dobbs M et al (2003) Autoantibodies to amyloid beta-peptide (Abeta) are increased in Alzheimer’s disease patients and Abeta antibodies can enhance Abeta neurotoxicity: implications for disease pathogenesis and vaccine development. *Neuromolecular Med* 3(1):29–39
- Nydegger UE (2007) Immune complex pathophysiology. *Ann N Y Acad Sci* 1109:66–83
- Pesaresi M, Lovati C, Bertora P, Mailland E et al (2006) Plasma levels of beta-amyloid (1-42) in Alzheimer’s disease and mild cognitive impairment. *Neurobiol Aging* 27(6):904–905
- Pomara N, Willoughby LM, Sidtis JJ, Mehta PD (2005) Selective reductions in plasma Abeta 1-42 in healthy elderly subjects during longitudinal follow-up: a preliminary report. *Am J Geriatr Psychiatry* 13(10):914–917
- Price JL, Morris JC (1999) Tangles and plaques in nondemented aging and “preclinical” Alzheimer’s disease. *Ann Neurol* 45(3):358–368
- Singh VK (1997) Neuroautoimmunity: pathogenic implications for Alzheimer’s disease. *Gerontology* 43(1–2):79–94
- Sundelof J, Giedraitis V, Irizarry MC, Sundstrom J et al (2008) Plasma beta amyloid and the risk of Alzheimer disease and dementia in elderly men: a prospective, population-based cohort study. *Arch Neurol* 65(2):256–263
- Suzuki N, Cheung TT, Cai X-D, Oodaka A et al (1994) An increased percentage of long amyloid β protein is secreted by familial amyloid β protein precursor (β APP717) mutants. *Science* 264:1336–1340
- Tamaoka A, Fukushima T, Sawamura N, Ishikawa K et al (1996) Amyloid beta protein in plasma from patients with sporadic Alzheimer’s disease. *J Neurol Sci* 141(1–2):65–68
- Tapiola T, Pirttila T, Mehta PD, Alafuzoff I et al (2000) Relationship between apoE genotype and CSF beta-amyloid (1-42) and tau in patients with probable and definite Alzheimer’s disease. *Neurobiol Aging* 21(5):735–740
- Tarkowski E, Andreassen N, Tarkowski A, Blennow K (2003) Intrathecal inflammation precedes development of Alzheimer’s disease. *J Neurol Neurosurg Psychiatry* 74(9):1200–1205
- Trieb K, Ransmayr G, Sgonc R, Lassmann H et al (1996) APP peptides stimulate lymphocyte proliferation in normals, but not in patients with Alzheimer’s disease. *Neurobiol Aging* 17(4):541–547
- Trojanowski JQ, Growdon JH (1998) A new consensus report on biomarkers for the early antemortem diagnosis of Alzheimer disease: current status, relevance to drug discovery, and recommendations for future research. *J Neuropathol Exp Neurol* 57(6):643–644
- van Oijen M, Hofman A, Soares HD, Koudstaal PJ et al (2006) Plasma Abeta(1-40) and Abeta(1-42) and the risk of dementia: a prospective case–cohort study. *Lancet Neurol* 5(8):655–660
- Vanderstichele H, Van Kerschaver E, Hesse C, Davidsson P et al (2000) Standardization of measurement of beta-amyloid(1-42) in cerebrospinal fluid and plasma. *Amyloid* 7(4):245–258
- Weksler ME, Relkin N, Turkenich R, LaRusse S et al (2002) Patients with Alzheimer disease have lower levels of serum anti-amyloid peptide antibodies than healthy elderly individuals. *Exp Gerontol* 37(7):943–948
- Winblad B, Palmer K, Kivipelto M, Jelic V et al (2004) Mild cognitive impairment—beyond controversies, towards a consensus: report of the International Working Group on Mild Cognitive Impairment. *J Intern Med* 256(3):240–246
- Woulfe JM, Duke R, Middeldorp JM, Stevens S et al (2002) Absence of elevated anti-alpha-synuclein and anti-EBV latent membrane protein antibodies in PD. *Neurology* 58(9):1435–1436
- Xu S, Gaskin F (1997) Increased incidence of anti-beta-amyloid autoantibodies secreted by Epstein-Barr virus transformed B cell lines from patients with Alzheimer’s disease. *Mech Ageing Dev* 94(1–3):213–222
- Xu W, Kawarabayashi T, Matsubara E, Deguchi K et al (2008) Plasma antibodies to Abeta40 and Abeta42 in patients with Alzheimer’s disease and normal controls. *Brain Res* 1219:169–179
- Yamaguchi H, Sugihara S, Ogawa A, Oshima N et al (2001) Alzheimer beta amyloid deposition enhanced by apoE epsilon4 gene precedes neurofibrillary pathology in the frontal association cortex of nondemented senior subjects. *J Neuropathol Exp Neurol* 60(7):731–739