

RESEARCH ARTICLE

# Efficacy of Tumor-Targeting *Salmonella* A1-R on a Melanoma Patient-Derived Orthotopic Xenograft (PDOX) Nude-Mouse Model

Mako Yamamoto<sup>1,2</sup>, Ming Zhao<sup>1</sup>, Yukihiro Hiroshima<sup>1,2</sup>, Yong Zhang<sup>1</sup>, Elizabeth Shurell<sup>4</sup>, Fritz C. Eilber<sup>4</sup>, Michael Bouvet<sup>2</sup>, Makoto Noda<sup>3</sup>, Robert M. Hoffman<sup>1,2\*</sup>

**1** AntiCancer, Inc., Ostrow Street, San Diego, California, United States of America, **2** Department of Surgery, University of California San Diego, West Arbor Drive, San Diego, California, United States of America, **3** Department of Molecular Oncology, Kyoto University Graduate School of Medicine, Yoshida-Konoe-cho, Sakyo-ku, Kyoto, Japan, **4** Division of Surgical Oncology, University of California Los Angeles, Los Angeles, California, United States of America

\* [all@anticancer.com](mailto:all@anticancer.com)



OPEN ACCESS

**Citation:** Yamamoto M, Zhao M, Hiroshima Y, Zhang Y, Shurell E, Eilber FC, et al. (2016) Efficacy of Tumor-Targeting *Salmonella* A1-R on a Melanoma Patient-Derived Orthotopic Xenograft (PDOX) Nude-Mouse Model. PLoS ONE 11(8): e0160882. doi:10.1371/journal.pone.0160882

**Editor:** Fabrizio Mattei, Istituto Superiore di Sanità, ITALY

**Received:** February 22, 2016

**Accepted:** July 22, 2016

**Published:** August 8, 2016

**Copyright:** © 2016 Yamamoto et al. This is an open access article distributed under the terms of the [Creative Commons Attribution License](https://creativecommons.org/licenses/by/4.0/), which permits unrestricted use, distribution, and reproduction in any medium, provided the original author and source are credited.

**Data Availability Statement:** Per the journal requirements, please note that all data underlying the findings in our study are freely available in the manuscript.

**Funding:** This study was supported by National Cancer Institute grant number CA183280. The funders had no role in study design, data collection and analysis, decision to publish, or preparation of the manuscript. AntiCancer Inc. provided support in the form of salary for authors [MZ and YZ], but did not have any additional role in the study design, data collection and analysis, decision to publish, or

## Abstract

Tumor-targeting *Salmonella enterica* serovar Typhimurium A1-R (*Salmonella* A1-R) had strong efficacy on a melanoma patient-derived orthotopic xenograft (PDOX) nude-mouse model. GFP-expressing *Salmonella* A1-R highly and selectively colonized the PDOX melanoma and significantly suppressed tumor growth ( $p = 0.021$ ). The combination of *Salmonella* A1-R and cisplatin (CDDP), both at low-dose, also significantly suppressed the growth of the melanoma PDOX ( $P = 0.001$ ). *Salmonella* A1-R has future clinical potential for combination chemotherapy with CDDP of melanoma, a highly-recalcitrant cancer.

## Introduction

Melanoma is a recalcitrant cancer. When melanoma metastasizes to regional lymph nodes, the 5-year survival rate is 29% and when it metastasizes to organs, the survival rate is 7% [1]. Although recently-developed immunotherapy has extended survival to some extent, the 5-year survival rates have not been significantly increased [2]. Decarbazine and cisplatin have been used to treat melanoma with limited efficacy [3, 4]. Therefore, more effective approaches to melanoma treatment are needed.

Immunotherapy involving PD-1/PD-L1 blockade has had some success with melanoma but is limited by lack of sufficient tumor infiltration of activated lymphocytes to kill the cancer cells within the tumor in the majority of patients tested [5].

Tumor-targeting *Salmonella* A1-R developed by our laboratory is auxotrophic (leucine-arginine dependent) which prevents it from continuously infecting normal tissues. Monotherapy using *Salmonella* A1-R was able to regress or eliminate primary and/or metastatic tumors in models of mouse highly aggressive of prostate [6, 7], breast [8–10], lung [11, 12], pancreatic [13–17], ovarian [18, 19], stomach [20], and cervical cancer [21], as well as sarcoma [22–26] and glioma [27, 28].

preparation of the manuscript. The specific roles of these authors are articulated in the 'author contributions' section.

**Competing Interests:** MZ and YZ are employees of AntiCancer Inc. MY and RMH are unpaid affiliates of AntiCancer Inc. YH was a former unpaid affiliate of AntiCancer Inc. RMH is a PLOS ONE Editorial Board Member. AntiCancer Inc. markets animal models of cancer. There are no other competing interests. There are no patents, products in development or marketed products to declare. This does not alter the authors' adherence to all the PLOS ONE policies on sharing data and materials. The specific roles of these authors are articulated in the 'author contributions' section.

Patient-derived orthotopic xenograft (PDOX) models were developed by our laboratory [29, 30]. In the PDOX models, the patient's tumor is transplanted in the organ of nude or other immunocompetent mice corresponding to its origin and thereby metastasizes such that the tumor mimics the complexity of tumor behavior in patients. Our laboratory has developed PDOX models of all major tumor types including colon [29], pancreatic [31], breast [32], ovarian [33], lung [34], cervical [21], stomach cancer [35], as well as mesothelioma [36] and sarcoma [25, 26, 37, 38].

The aim of the current study was to determine the efficacy of *Salmonella* A1-R on a PDOX model of melanoma compared to and in combination with standard chemotherapy.

## Materials and Methods

### Animal Experiments and Ethics Statement

All animal studies were conducted with an AntiCancer Institutional Animal Care and Use Committee (IACUC) protocol specifically approved for this study and in accordance with the principles and procedures outlined in the National Institutes of Health Guide for the Care and Use of Animals under Assurance Number A3873-1. Athymic nu/nu nude mice (AntiCancer, Inc., San Diego, CA), 4–6 weeks old, were used in this study. Animals were housed in a barrier facility on a high-efficiency particulate arrestance (HEPA)-filtered rack under standard conditions of 12-hour light/dark cycles. The animals were fed an autoclaved laboratory rodent diet (S1 File). In order to minimize any suffering of the animals, anesthesia and analgesics were treated for all surgical procedures. Animals were anesthetized by subcutaneous (s.c.) injection of a 0.02 ml solution of 20 mg/kg ketamine, 15.2 mg/kg xylazine, and 0.48 mg/kg acepromazine maleate. The response of animals during surgery was monitored to ensure adequate depth of anesthesia. Ibuprofen (7.5 mg/kg orally in drinking water every 24 hours for 3 days post-surgery) was used in order to provide analgesia post-operatively in the surgically-treated animals. The animals were carefully observed on a daily basis and would be humanely sacrificed by CO<sub>2</sub> inhalation if they met the following humane endpoint criteria: prostration, skin lesions, significant bodyweight loss, difficulty breathing, epistaxis, and rotational motion. Individual cages housed animals only in the same treatment group with no more than five mice per cage.

### Melanoma Specimen Collection

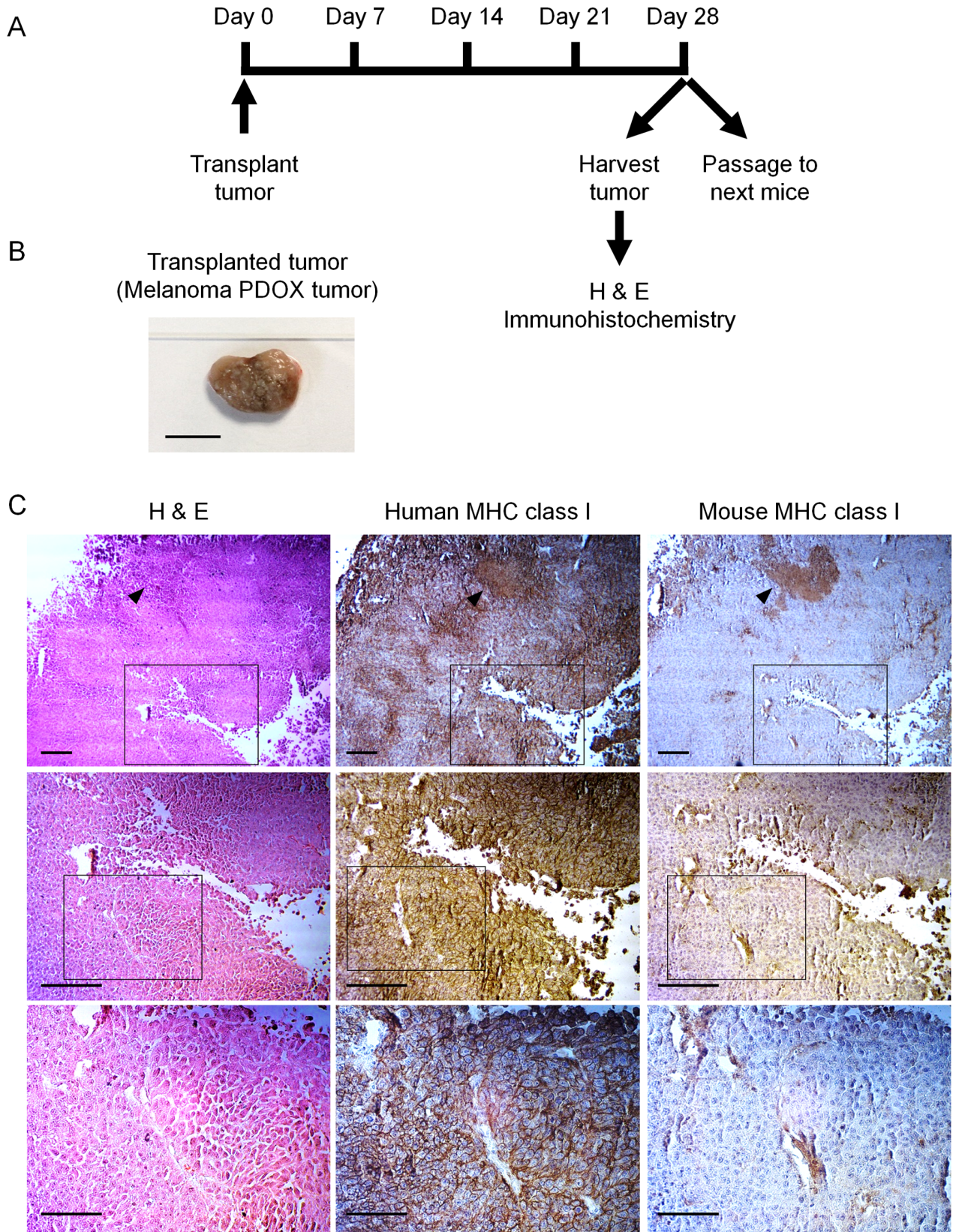
The patient had given written informed consent for experimental research on residual tumor tissue available after histopathologic and cytogenetic analyses. The written informed consent document was recorded in a special binder for such documents. The consent procedure was approved by the Institutional Review Board of the UC San Diego Medical Center. This study was also conducted under the approval of the UCSD IRB.

### Patient-Derived Orthotopic Xenograft (PDOX) Melanoma Model

Tumor tissue was obtained from a patient at the time of surgery at the UCSD Medical Center. The harvested tumor was cut into fragments (3-mm<sup>3</sup>) and transplanted into the back skin of five nude mice with two mice transplanted with two tumors. Animals were sacrificed at the end of the experiment. Tumors were harvested and fragments were transplanted to one or two sides of the back skin for the next passage and/or for analysis.

### Histology

Four tumors were harvested from four mice. Harvested tumor samples were fixed with 10% formalin solution, embedded into paraffin and sectioned. Hematoxylin and eosin (H&E)



**Fig 1. Establishment of a melanoma patient-derived orthotopic xenograft (PDOX) model. A)** Schematic diagram of the experimental protocol. **B)** Representative cross-sections of transplanted tumor 28 days after transplantation obtained from an orthotopically-transplanted patient's melanoma. Scale bar: 10 mm. **C)** Immunohistochemical characterization of PDOX melanoma after being grown in nude mice. H&E-stained sections (left column) and immunohistochemistry for human MHC class I (HLA; middle column) and mouse MHC class I (H2 KdH2 Dd; right column). Strong staining for HLA was observed in the cancer cells (middle column), whereas strong staining for H2 KdH2 Dd was observed in the stromal cells (right column). Magnified views of boxed region in the upper rows are indicated at the middle rows and magnified views of boxed region in the middle rows are indicated in the lower rows. Black arrowhead indicates necrotic region of the tumor. Scale bars: (top and middle row) 200  $\mu$ m; (bottom row) 100  $\mu$ m.

doi:10.1371/journal.pone.0160882.g001

staining was performed with standard protocol. For immunohistochemistry, paraffin-embedded tumor sections were stained with a rabbit anti-human MHC class I antibody (1:100; ab52922, Abcam, Cambridge, MA) and a mouse anti-MHC class I H2 Kd + H2 Dd antibody (1:100; ab24229, Abcam). Immunohistochemistry was performed using anti-rabbit and anti-mouse secondary antibodies and avidin/biotin/horseradish peroxidase complex (Dako Denmark A/S, Glostrup, Denmark) and developed with the DAB kit (BD Biosciences, San Diego, CA) [16]. Five microscopic fields were inspected for each tumor.

### *Salmonella* A1-R and Chemotherapy Drugs

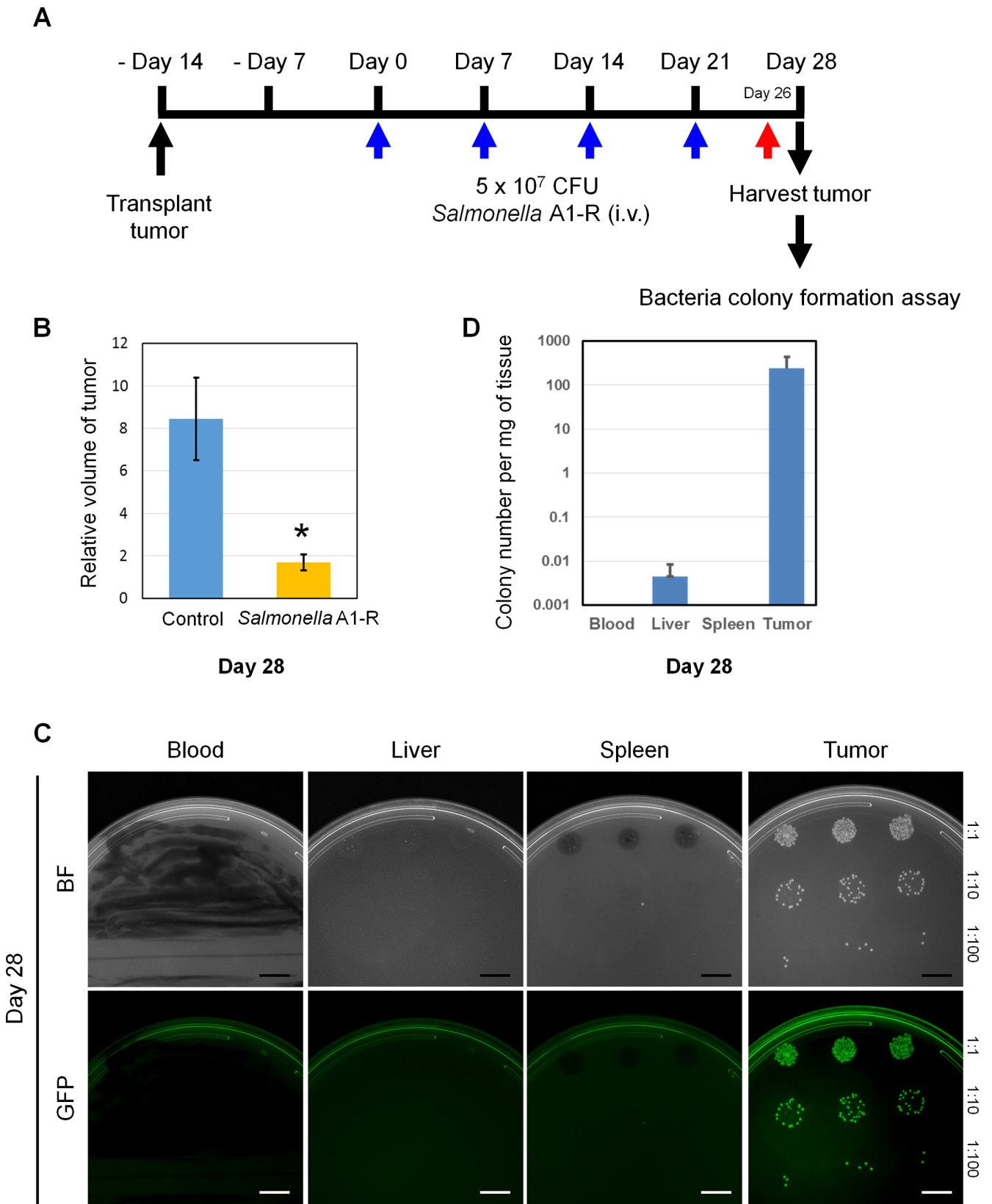
Green fluorescent protein (GFP)-expressing *Salmonella* A1-R bacteria were grown overnight in LB medium and then diluted in 1:10 with LB medium. Bacteria were harvested at late-log phase, washed with phosphate buffered saline (PBS), and diluted in PBS [6–8]. Two weeks after transplantation, bacteria and/or chemotherapy were started. 5-fluorouracil (5-FU, Kyowa Hakko Kirin, Co., Tokyo, Japan) and cisplatin (CDDP, Nippon Kayaku, Co., Tokyo, Japan) solutions were administered via intraperitoneal (i.p.) injection at a dose of 10 mg/kg (5-FU) and 3 or 5 mg/kg (CDDP) once a week. *Salmonella* A1-R was injected intravenously (i.v.) at a dose of  $3$  or  $5 \times 10^7$  CFU/body once a week. The approximate volume of the mass was measured with a caliper twice a week and calculated with the following formula: Tumor volume =  $\frac{4}{3}\pi \times (d/2)^2 \times D/2$ , where  $d$  is the minor tumor axis and  $D$  is the major tumor axis. Treatment efficacy was indicated as a ratio of the tumor volume at each time point compared with the tumor volume at the beginning of the treatment. Body weight of the mice was measured on a balance twice a week.

### Detection of GFP-Labeled *Salmonella* A1-R Bacteria in Tumor and Organs

Two days before harvesting tumors and normal organs, mice were injected intravenously with *Salmonella* A1-R ( $5 \times 10^7$  CFU/body). Two days later, PDOX tissues from melanoma tumor and normal organs (liver, spleen and blood) were harvested and weighed. The tumor and organs were minced and diluted in 1:1, 1:10 and 1:100 with 100  $\mu$ l PBS, respectively. Each dilution (10  $\mu$ l) was spotted on an LB agar plate containing 50  $\mu$ g/mL ampicillin and the plates were incubated at 37°C for 24 hours. Relative colony numbers are calculated by actual colony number divided by mg of tissue. One tumor and normal organs from one mouse were harvested and the experiment was repeated three times.

### Imaging

The iBox Imaging System (UVP LLC, Upland, CA) was used for imaging GFP-labeled *S. typhimurium* A1-R [39–42]. The BHS System Microscope (Olympus) was used for H&E staining and immunohistochemistry.



**Fig 2. *Salmonella* A1-R targeting and efficacy on the melanoma PDOX model.** **A)** Schematic diagram of the experimental protocol. **B)** Efficacy of *Salmonella* A1-R is indicated by the volume ratio of the transplanted tumor at day 28 after injection compared with the tumor at the beginning of the treatment. Tumor size of the *Salmonella* A1-R-treated group was significantly decreased compared with the untreated control group. The values are mean relative tumor volume  $\pm$  SEM (bars). There were five mice per group. \* $p < 0.05$  compared to the untreated group. **C)** Distribution of GFP-labeled *Salmonella* A1-R in tumor and organs. Representative images of GFP-labeled *Salmonella* A1-R bacteria isolated and cultured from the tumor and the normal organs (blood, liver and spleen) of the mice treated with *Salmonella* A1-R. Fluorescence imaging with the iBox small animal imaging system (UVP LLC). Scale bar: 10 mm. **D)** Colony number of each sample is indicated per mg of harvested tissue. Tissues were collected from three different mice. GFP-labeled *Salmonella* A1-R was clearly detected in the tumor. A small number of GFP-labeled *Salmonella* A1-R was detected in the liver and no GFP-labeled *Salmonella* A1-R was detected in blood and spleen.

doi:10.1371/journal.pone.0160882.g002

## Statistical Analysis

STATA 12.0 SE was used for further data analysis. Time points were chosen a priori: 28 days was selected as a final end point, and 10 days was chosen as a midway representative time point. However, data were collected from 9 time points throughout the 28 days, at regular intervals. A repeated-measures regression model was used to assess the tumor volume of the animals over these regular intervals. The within-subject covariance structure of the data was compound symmetric, therefore we proceeded with repeated measure ANOVA including the repeated option to compute p-values for conservative F-tests. Greenhouse-Geisser correction was performed to correct for any violations of sphericity. The treatment-by-time interaction was significant ( $p = 0.0000$ ) as were the main-effects for treatment and time ( $p = 0.0000$ ) for *Salmonella* A1-R, CDDP and *Salmonella* A1-R and CDDP combined. The specific comparisons of interest remained significant within this model. Graph of adjusted predictions of interaction of treatment group and time with 95%CI and graph of mean change in tumor volume over time.

## Results

### Patient-Derived Melanoma Growing Orthotopically in Nude Mice

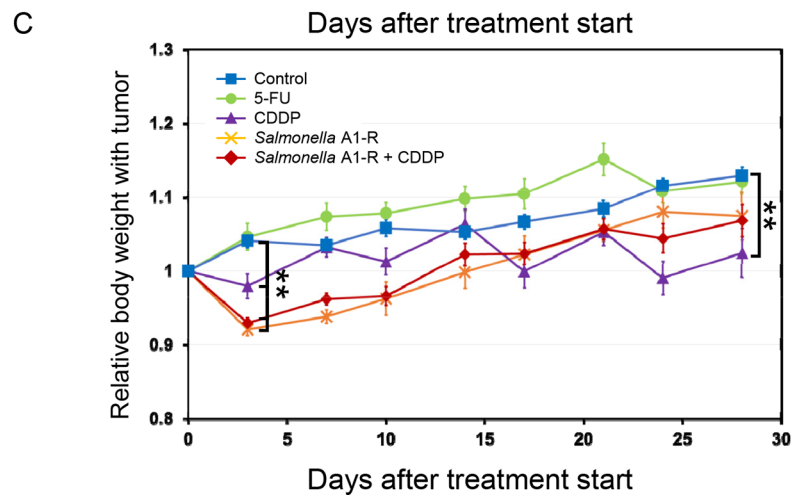
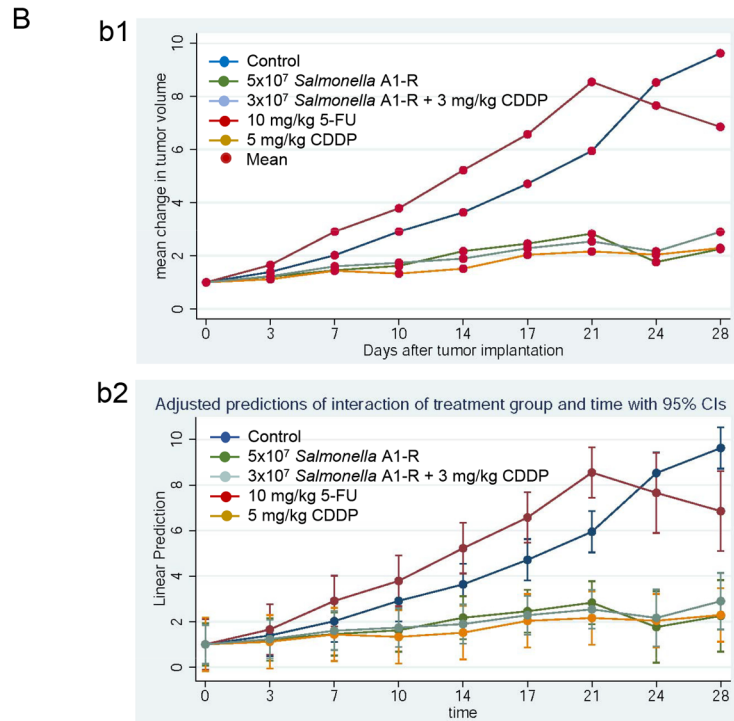
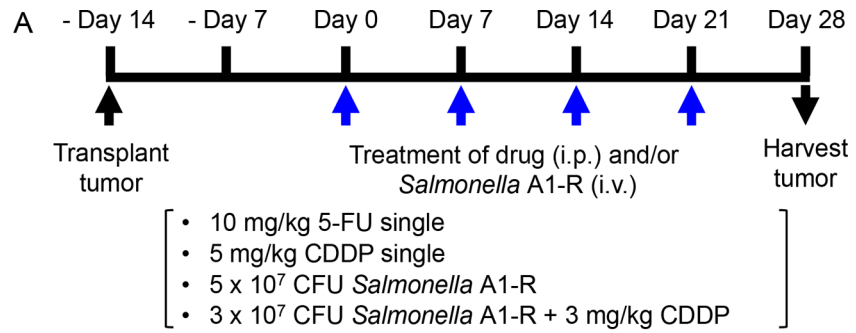
Four weeks after transplantation of the patient melanoma, solid tumors were found growing in the back skin of the nude mice. The tumors were harvested from the mice and used for the next passage and histological analysis (Fig 1A).

To determine whether the grown tumor is completely derived from melanoma patients' specimen, immunohistochemistry analysis was performed. The melanoma PDOX strongly expressed human MHC class I protein (Fig 1C), whereas cells around blood vessels or stromal cells only reacted with mouse MHC class I antibody (Fig 1C). These data indicate that the growing PDOX tumor was human.

### *Salmonella* A1-R is Highly Effective on the PDOX Melanoma in Nude Mice

*Salmonella* A1-R was administrated intravenously to the melanoma PDOX two weeks after transplantation at a dose of  $5 \times 10^7$  CFU/body, qW $\times$ 4. The relative tumor volume on day-28, compared to day-0, of untreated control was  $8.46 \pm 1.95$  and in the *Salmonella* A1-R-treated mice, the tumor volume ratio was  $1.68 \pm 0.37$  ( $p = 0.021$ ) (Fig 2B). There were five mice in each group and the experiment was repeated twice.

Extensive GFP-labeled *Salmonella* A1-R could be isolated from the tumor and could not be isolated from the blood and spleen and only very small amounts could be isolated from the liver (Fig 2C and 2D). These results indicated that *Salmonella* A1-R selectively and effectively colonized and targeted the tumor.



**Fig 3. Effect of a tumor-targeting *Salmonella* A1-R and chemotherapy on the melanoma PDOX. A)** Schematic diagram of the experimental protocol. (1) untreated control (Control); (2) 5-fluorouracil (5-FU; 10 mg/kg, intraperitoneal injection (i.p.), qW×4); (3) cisplatin (CDDP; 5 mg/kg, i.p., qW×4); (4) *Salmonella* A1-R ( $5 \times 10^7$  CFU/body, intravenously (i.v.), qW×4) and (5) *Salmonella* A1-R ( $3 \times 10^7$  CFU/body, i.v., qW×4) + CDDP (CDDP; 3 mg/kg, i.p., qW×4). **B)** Growth curves of the melanoma PDOX tumor treated with various drugs as described above. B1: Mean change in tumor volume plotted against time; Control,  $n = 9$ ; 5-FU,  $n = 4$ ; CDDP,  $n = 5$ ; *Salmonella* A1-R,  $n = 9$ ; *Salmonella* A1-R + CDDP,  $n = 8$ . B-2: Data plotted are linear prediction versus time with adjusted predictions of interaction of treatment group and time with 95% Cis. The treatment-by-time interaction was significant ( $p = 0.0000$ ) as were the main-effects for treatment and time ( $p = 0.0000$ ) for *Salmonella* A1-R, CDDP and *Salmonella* A1-R and CDDP combined. **C)** Comparison of body weight of nude mice transplanted PDOX tumors after *Salmonella* A1-R and/or chemotherapy. All values represent mean  $\pm$  SEM; Control,  $n = 8$ ; 5-FU,  $n = 4$ ; CDDP,  $n = 4$ ; *Salmonella* A1-R,  $n = 7$ ; *Salmonella* A1-R + CDDP,  $n = 4$ . \*\* $p < 0.01$ , compared with the untreated control group.

doi:10.1371/journal.pone.0160882.g003

## Efficacy of *Salmonella* A1-R and Chemotherapy on the PDOX Melanoma

Two weeks after tumor transplantation, mice were treated with the following groups: (1) untreated control (Control); (2) 5-fluorouracil (5-FU; 10 mg/kg, i.p., qW×4); (3) cisplatin (CDDP; 5 mg/kg, i.p., qW×4); (4) *Salmonella* A1-R ( $5 \times 10^7$  CFU/body, i.v., qW×4) and (5) *Salmonella* A1-R ( $3 \times 10^7$  CFU/body, i.v., qW×4) + CDDP (CDDP, 3 mg/kg, i.p., qW×4) (Fig 3A).

The relative tumor volume on day 28, compared with day 0, of each group was as follows: (1) untreated control:  $9.63 \pm 1.37$ ; (2) 5-FU:  $6.86 \pm 0.52$ ; (3) CDDP:  $2.25 \pm 0.32$  ( $p = 0.0001$ ); (4) *Salmonella* A1-R:  $2.29 \pm 0.35$  ( $p = 0.0001$ ); (5) *Salmonella* A1-R + CDDP:  $2.90 \pm 0.47$ . The treatment-by-time interaction was significant ( $p = 0.0000$ ) as were the main-effects for treatment and time ( $p = 0.0000$ ) for *Salmonella* A1-R, CDDP and *Salmonella* A1-R and CDDP combined. These data suggest that *Salmonella* A1-R and/or CDDP treatment is highly effective in the melanoma PDOX and the efficacy appears from the very early period of the treatment (Fig 3). Regarding the choice of chemotherapy drugs, CDDP was used as a positive control and 5-FU as a negative control in addition to the untreated control, since 5-FU is known not to be effective against melanoma [43].

The relative body weight on day 28 compared with day 0, of each group was as follows: (1) untreated control:  $1.13 \pm 0.012$ ; (2) 5-FU:  $1.12 \pm 0.016$ ; (3) CDDP:  $1.02 \pm 0.033$ ; (4) *Salmonella* A1-R:  $1.07 \pm 0.032$  and (5) *Salmonella* A1-R + CDDP:  $1.07 \pm 0.022$ . Only the body weight of CDDP-treated mice was significantly decreased compared with untreated control ( $p = 0.0001$ ) at the end of this experiment (Fig 3C).

## Discussion

*Salmonella* has been previously used for effective cancer therapy of a melanoma and other cell lines [44–58]. The *Salmonella* strain (VNP20009) was attenuated by a lipid A–mutation (msbB), purine auxotrophy (purI) and amino acid auxotrophy [44]. VNP20009 was safely administered to patients in a Phase I clinical trial on patients with metastatic melanoma. However it was poorly colonized in the tumors since it might be over-attenuated [58]. Our results are the first to demonstrate efficacy of *Salmonella* treatment on a patient melanoma tumor models (PDOX).

*Salmonella* A1-R was also previously shown to be active in syngeneic mouse tumor models: we recently determined the efficacy of *Salmonella* A1-R on the Lewis lung (LLC) in C57BL/6 (C57) immunocompetent mice and observed anti-metastatic efficacy [59] as well as against primary tumors [60]. These results suggest that *Salmonella* A1-R is also active in animals with an intact immune system and a syngeneic rather than xenografted tumor. The present and



previous results suggest the potential of *Salmonella* A1-R alone or in combination with CDDP to treat melanoma patients in the future.

## Supporting Information

**S1 File. ARRIVE checklist.**  
(PDF)

## Acknowledgments

### Dedication

This paper is dedicated to the memory of A. R. Moossa, M.D., and Sun Lee, M.D.

## Author Contributions

**Conceptualization:** MY MZ YH RMH.

**Data curation:** MY RMH.

**Formal analysis:** MY ES FCE.

**Funding acquisition:** RMH MB.

**Investigation:** MY MZ YH YZ.

**Methodology:** MY MZ YH RMH.

**Project administration:** RMH.

**Resources:** RMH MB MN.

**Supervision:** RMH MN MB.

**Validation:** MY MZ YH ES FCE.

**Visualization:** MY MZ YH YZ.

**Writing - original draft:** MY RMH.

**Writing - review & editing:** MY RMH.

## References

1. Hauschild A, Grob JJ, Demidov LV, Jouary T, Gutzmer R, Millward M, et al. (2012) Dabrafenib in BRAF-mutated metastatic melanoma: a multicentre, open-label, phase 3 randomised controlled trial. *Lancet* 380:358e365.
2. Gandidi S, Massi D, Mandala M. (2016) PD-L1 expression in cancer patients receiving anti PD-1/PD-L1 antibodies: a systemic review and meta-analysis. *Crit Rev Oncol Hematol*, in press. doi: [10.1016/j.critrevonc.2016.02.001](https://doi.org/10.1016/j.critrevonc.2016.02.001)
3. Chapman PB, Einhorn LH, Meyers ML, Saxman S, Destro AN, Panageas KS, et al. (1999) Phase III multicenter randomized trial of the Dartmouth regimen versus dacarbazine in patients with metastatic melanoma. *J Clin Oncol* 17:2745–2751. PMID: [10561349](https://pubmed.ncbi.nlm.nih.gov/10561349/)
4. Rabik CA, Dolan ME. (2007) Molecular mechanisms of resistance and toxicity associated with platinating agents. *Cancer Treatment Rev* 33:9–23.
5. Tang H, Wang Y, Chlewicki LK, Zhang Y, Guo J, Liang W, et al. (2016) Facilitating T Cell infiltration in tumor microenvironment overcomes resistance to PD-L1 blockade. *Cancer Cell* 29:285–296. doi: [10.1016/j.ccell.2016.02.004](https://doi.org/10.1016/j.ccell.2016.02.004) PMID: [26977880](https://pubmed.ncbi.nlm.nih.gov/26977880/)

6. Zhao M, Yang M, Li XM, Jiang P, Baranov E, Li S, et al. (2005) Tumor-targeting bacterial therapy with amino acid auxotrophs of GFP-expressing *Salmonella typhimurium*. *Proc Natl Acad Sci USA* 102:755–760. PMID: [15644448](#)
7. Zhao M, Geller J, Ma H, Yang M, Penman S, Hoffman RM. (2007) Monotherapy with a tumor-targeting mutant of *Salmonella typhimurium* cures orthotopic metastatic mouse models of human prostate cancer. *Proc Natl Acad Sci USA* 104:10170–10174. PMID: [17548809](#)
8. Zhao M, Yang M, Ma H, Li X, Tan X, Li S, et al. (2006) Targeted therapy with a *Salmonella typhimurium* leucine-arginine auxotroph cures orthotopic human breast tumors in nude mice. *Cancer Res* 2006; 66:7647–7652. PMID: [16885365](#)
9. Zhang Y, Tome Y, Suetsugu A, Zhang L, Zhang N, Hoffman RM, et al. (2012) Determination of the optimal route of administration of *Salmonella typhimurium* A1-R to target breast cancer in nude mice. *Anticancer Res* 2012; 32:2501–2508. PMID: [22753706](#)
10. Zhang Y, Miwa S, Zhang N, Hoffman RM, Zhao M. (2015) Tumor-targeting *Salmonella typhimurium* A1-R arrests growth of breast-cancer brain metastasis. *Oncotarget* 6:2615–2622. PMID: [25575815](#)
11. Uchugonova A, Zhao M, Zhang Y, Weinigel M, König K, Hoffman RM. (2012) Cancer-cell killing by engineered *Salmonella* imaged by multiphoton tomography in live mice. *Anticancer Res* 32:4331–4339. PMID: [23060555](#)
12. Liu F, Zhang L, Hoffman RM, Zhao M. (2010) Vessel destruction by tumor-targeting *Salmonella typhimurium* A1-R is enhanced by high tumor vascularity. *Cell Cycle* 9:4518–4524. PMID: [21135579](#)
13. Nagakura C, Hayashi K, Zhao M, Yamauchi K, Yamamoto N, Tsuchiya H, et al. (2009) Efficacy of a genetically-modified *Salmonella typhimurium* in an orthotopic human pancreatic cancer in nude mice. *Anticancer Res* 29:1873–1878. PMID: [19528442](#)
14. Yam C, Zhao M, Hayashi K, Ma H, Kishimoto H, McElroy M, et al. (2010) Monotherapy with a tumor-targeting mutant of *S. typhimurium* inhibits liver metastasis in a mouse model of pancreatic cancer. *J Surg Res* 164:248–255. doi: [10.1016/j.jss.2009.02.023](#) PMID: [19766244](#)
15. Hiroshima Y, Zhao M, Zhang Y, Maawy A, Hassanein MK, Uehara F, et al. (2013) Comparison of efficacy of *Salmonella typhimurium* A1-R and chemotherapy on stem-like and non-stem human pancreatic cancer cells. *Cell Cycle* 12:2774–2780. doi: [10.4161/cc.25872](#) PMID: [23966167](#)
16. Hiroshima Y, Zhao M, Maawy A, Zhang Y, Katz MH, Fleming JB, et al. (2014) Efficacy of *Salmonella typhimurium* A1-R versus chemotherapy on a pancreatic cancer patient-derived orthotopic xenograft (PDOX). *J Cell Biochem* 115:1254–1261. doi: [10.1002/jcb.24769](#) PMID: [24435915](#)
17. Hiroshima Y, Zhang Y, Murakami T, Maawy AA, Miwa S, Yamamoto M, et al. (2014) Efficacy of tumor-targeting *Salmonella typhimurium* A1-R in combination with anti-angiogenesis therapy on a pancreatic cancer patient-derived orthotopic xenograft (PDOX) and cell line mouse models. *Oncotarget* 5:12346–12357. PMID: [25402324](#)
18. Matsumoto Y, Miwa S, Zhang Y, Hiroshima Y, Yano S, Uehara F, et al. (2014) Efficacy of tumor-targeting *Salmonella typhimurium* A1-R on nude mouse models of metastatic and disseminated human ovarian cancer. *J Cell Biochem* 115:1996–2003. doi: [10.1002/jcb.24871](#) PMID: [24924355](#)
19. Matsumoto Y, Miwa S, Zhang Y, Zhao M, Yano S, Uehara F, et al. (2015) Intraperitoneal administration of tumor-targeting *Salmonella typhimurium* A1-R inhibits disseminated human ovarian cancer and extends survival in nude mice. *Oncotarget* 6:11369–11377. PMID: [25957417](#)
20. Yano S, Zhang Y, Zhao M, Hiroshima Y, Miwa S, Uehara F, et al. (2014) Tumor-targeting *Salmonella typhimurium* A1-R decoys quiescent cancer cells to cycle as visualized by Fucci imaging and become sensitive to chemotherapy. *Cell Cycle* 13:3958–3963. doi: [10.4161/15384101.2014.964115](#) PMID: [25483077](#)
21. Hiroshima Y, Zhang Y, Zhao M, Zhang N, Murakami T, Maawy A, et al. (2015) Tumor-targeting *Salmonella typhimurium* A1-R in combination with Trastuzumab eradicates HER-2-positive cervical cancer cells in patient-derived mouse models. *PLoS One* 10: e0120358. doi: [10.1371/journal.pone.0120358](#) PMID: [26047477](#)
22. Hayashi K, Zhao M, Yamauchi K, Yamamoto N, Tsuchiya H, Tomita K, et al. (2009) Cancer metastasis directly eradicated by targeted therapy with a modified *Salmonella typhimurium*. *J Cell Biochem* 106:992–998. doi: [10.1002/jcb.22078](#) PMID: [19199339](#)
23. Hayashi K, Zhao M, Yamauchi K, Yamamoto N, Tsuchiya H, Tomita K, et al. (2009) Systemic targeting of primary bone tumor and lung metastasis of high-grade osteosarcoma in nude mice with a tumor-selective strain of *Salmonella typhimurium*. *Cell Cycle* 8:870–875. PMID: [19221501](#)
24. Miwa S, Zhang Y, Baek K-E, Uehara F, Yano S, Yamamoto M, et al. (2014) Inhibition of spontaneous and experimental lung metastasis of soft-tissue sarcoma by tumor-targeting *Salmonella typhimurium* A1-R. *Oncotarget* 5:12849–12861. PMID: [25528763](#)

25. Murakami T, DeLong J, Eilber FC, Zhao M, Zhang Y, Zhang N, et al. (2016) Tumor-targeting *Salmonella typhimurium* A1-R in combination with doxorubicin eradicate soft tissue sarcoma in a patient-derived orthotopic xenograft PDOX model. *Oncotarget* 7:12783–12790. doi: [10.18632/oncotarget.7226](https://doi.org/10.18632/oncotarget.7226) PMID: [26859573](https://pubmed.ncbi.nlm.nih.gov/26859573/)
26. Kiyuna T, Murakami T, Tome Y, Kawaguchi K, Igarashi K, Zhang Y, et al. (2016) High efficacy of tumor-targeting *Salmonella typhimurium* A1-R on a doxorubicin- and dactolisib-resistant follicular dendritic-cell sarcoma in a patient-derived orthotopic xenograft nude mouse model. *Oncotarget*, in press.
27. Kimura H, Zhang L, Zhao M, Hayashi K, Tsuchiya H, Tomita K, et al. (2010) Targeted therapy of spinal cord glioma with a genetically-modified *Salmonella typhimurium*. *Cell Proliferation* 43:41–48. doi: [10.1111/j.1365-2184.2009.00652.x](https://doi.org/10.1111/j.1365-2184.2009.00652.x) PMID: [19922490](https://pubmed.ncbi.nlm.nih.gov/19922490/)
28. Momiyama M, Zhao M, Kimura H, Tran B, Chishima T, Bouvet M, et al. (2012) Inhibition and eradication of human glioma with tumor-targeting *Salmonella typhimurium* in an orthotopic nude-mouse model. *Cell Cycle* 11:628–632. doi: [10.4161/cc.11.3.19116](https://doi.org/10.4161/cc.11.3.19116) PMID: [22274398](https://pubmed.ncbi.nlm.nih.gov/22274398/)
29. Fu X, Besterman JM, Monosov A, Hoffman RM (1991) Models of human metastatic colon cancer in nude mice orthotopically constructed by using histologically intact patient specimens. *Proc Natl Acad Sci USA* 88:9345–9349. PMID: [1924398](https://pubmed.ncbi.nlm.nih.gov/1924398/)
30. Hoffman RM. (2015) Patient-derived orthotopic xenografts: better mimic of metastasis than subcutaneous xenografts. *Nature Reviews Cancer* 15:451–452. PMID: [26422835](https://pubmed.ncbi.nlm.nih.gov/26422835/)
31. Fu X, Guadagni F, Hoffman RM (1993) A metastatic nude-mouse model of human pancreatic cancer constructed orthotopically from histologically intact patient specimens. *Proc Natl Acad Sci USA* 89:5645–5649.
32. Fu X, Le P, Hoffman RM (1993) A metastatic orthotopic-transplant nude-mouse model of human patient breast cancer. *Anticancer Res* 13:901–904. PMID: [8352558](https://pubmed.ncbi.nlm.nih.gov/8352558/)
33. Fu X, Hoffman RM (1993) Human ovarian carcinoma metastatic models constructed in nude mice by orthotopic transplantation of histologically-intact patient specimens. *Anticancer Res* 13:283–286. PMID: [8517640](https://pubmed.ncbi.nlm.nih.gov/8517640/)
34. Wang X, Fu X, Hoffman RM (1992) A new patient-like metastatic model of human lung cancer constructed orthotopically with intact tissue via thoracotomy in immunodeficient mice. *Int J Cancer* 51:992–995. PMID: [1639545](https://pubmed.ncbi.nlm.nih.gov/1639545/)
35. Furukawa T, Fu X, Kubota T, Watanabe M, Kitajima M, Hoffman RM (1993) Nude mouse metastatic models of human stomach cancer constructed using orthotopic implantation of histologically intact tissue. *Cancer Res* 53:1204–1208. PMID: [8439965](https://pubmed.ncbi.nlm.nih.gov/8439965/)
36. Astoul P, Wang X, Colt HG, Boutin C, Hoffman RM (1996) A patient-like human malignant pleural mesothelioma nude-mouse model. *Oncology Reports* 3:483–487. PMID: [21594397](https://pubmed.ncbi.nlm.nih.gov/21594397/)
37. Hiroshima Y, Zhang Y, Zhang N, Uehara F, Maawy A, Murakami T, et al. (2015) Patient-derived orthotopic xenograft (PDOX) nude mouse model of soft-tissue sarcoma more closely mimics the patient behavior in contrast to the subcutaneous ectopic model. *Anticancer Research* 35:697–701. PMID: [25667448](https://pubmed.ncbi.nlm.nih.gov/25667448/)
38. Hiroshima Y, Zhao M, Zhang Y, Zhang N, Maawy A, Murakami T, et al. (2015) Tumor-targeting *Salmonella typhimurium* A1-R arrests a chemo-resistant patient soft-tissue sarcoma in nude mice. *PLoS One* 10:e0134324. doi: [10.1371/journal.pone.0134324](https://doi.org/10.1371/journal.pone.0134324) PMID: [26237416](https://pubmed.ncbi.nlm.nih.gov/26237416/)
39. Miwa S, Yano S, Zhang Y, Matsumoto Y, Uehara F, Yamamoto M, et al. (2014) Tumor-targeting *Salmonella typhimurium* A1-R prevents experimental human breast cancer bone metastasis in nude mice. *Oncotarget* 5:7119–7125. PMID: [25216526](https://pubmed.ncbi.nlm.nih.gov/25216526/)
40. Miwa S, Matsumoto Y, Hiroshima Y, Yano S, Uehara F, Yamamoto M, et al. (2014) Fluorescence-guided surgery of prostate cancer bone metastasis. *J. Surgical Research* 192:124–133.
41. Miwa S, Zhang Y, Baek K-E, Uehara F, Yano S, Yamamoto M, et al. (2014) Inhibition of spontaneous and experimental lung metastasis of soft-tissue sarcoma by tumor-targeting *Salmonella typhimurium* A1-R. *Oncotarget* 5:12849–12861. PMID: [25528763](https://pubmed.ncbi.nlm.nih.gov/25528763/)
42. Uehara F, Hiroshima Y, Miwa S, Tome Y, Yano S, Yamamoto M, et al. (2015) Fluorescence-guided surgery of retroperitoneal-implanted human fibrosarcoma in nude mice delays or eliminates tumor recurrence and increases survival compared to bright-light surgery. *PLoS One* 10:e0116865. doi: [10.1371/journal.pone.0116865](https://doi.org/10.1371/journal.pone.0116865) PMID: [25710463](https://pubmed.ncbi.nlm.nih.gov/25710463/)
43. Holland-Frei Cancer Medicine, 6th edition. Kufe, DW, Pollock, RE, Weichselbaum, RR, Bast, Jr, RC, Gansler, TS, Holland, JF, Frei, III, E, eds. Hamilton (ON), BC Decker, 2003.
44. Pawelek JM, Low KB, Bermudes D. (2003) Bacteria as tumour-targeting vectors. *Lancet Oncol* 4:548–556. PMID: [12965276](https://pubmed.ncbi.nlm.nih.gov/12965276/)
45. Forbes NS (2010). Engineering the perfect (bacterial) cancer therapy. *Nature Reviews Cancer* 10:785–794. doi: [10.1038/nrc2934](https://doi.org/10.1038/nrc2934) PMID: [20944664](https://pubmed.ncbi.nlm.nih.gov/20944664/)

46. Kasinskas RW, Forbes NS (2006). *Salmonella typhimurium* specifically chemotax and proliferate in heterogeneous tumor tissue in vitro. *Biotechnology and Bioengineering* 94:710–721. PMID: [16470601](#)
47. Kasinskas RW, Forbes NS (2007). *Salmonella typhimurim* lacking ribose chemoreceptors localize in tumor quiescence and induce apoptosis. *Cancer Res* 67:3201–3209. PMID: [17409428](#)
48. Ganai S, Arenas RB, Sauer JP, Bentley B, Forbes NS (2011). In tumors *Salmonella* migrate away from vasculature toward the transition zone and induce apoptosis. *Cancer Gene Ther* 18:457–466. doi: [10.1038/cgt.2011.10](#) PMID: [21436868](#)
49. Forbes NS, Munn LL, Fukumura D, Jain RK (2003). Sparse initial entrapment of systemically injected *Salmonella typhimurium* leads to heterogeneous accumulation within tumors. *Cancer Res* 63:5188–5193. PMID: [14500342](#)
50. Pawelek JM, Low KB, Bermudes D (1997). Tumor-targeted *Salmonella* as a novel anticancer vector. *Cancer Res* 57:4537–4544. PMID: [9377566](#)
51. Low KB, Ittensohn M, Le T, Platt J, Sodi S, Amoss M, et al. (1999) Lipid A mutant *Salmonella* with suppressed virulence and TNFalpha induction retain tumor-targeting in vivo. *Nature Biotechnol* 17:37–41.
52. Zheng LM, Luo X, Feng M, Li ZJ, Le T, Ittensohn M, et al. (2000) Tumor amplified protein expression therapy: *Salmonella* as a tumor-selective protein delivery vector. *Oncology Res* 12:127–135.
53. Platt J, Sodi S, Kelley M, Rockwell S, Bermudes D, Low KB, et al. (2000) Antitumour effects of genetically engineered *Salmonella* in combination with radiation. *Euro J Cancer* 36:2397–2402.
54. Clairmont C, Lee KC, Pike J, Ittensohn M, Low KB, Pawelek J, et al. (2000) Biodistribution and genetic stability of the novel antitumor agent VNP20009, a genetically modified strain of *Salmonella typhimurium*. *J Infect Dis* 181:1996–2002. PMID: [10837181](#)
55. Luo X, Li ZJ, Lin S, Le T, Ittensohn M, Bermudes D, et al. (2001) Antitumor effect of VNP20009, an attenuated *Salmonella*, in murine tumor models. *Oncol Res* 12:501–508. PMID: [11939414](#)
56. Li YH, Xie YM, Guo KY, Chen H, Wei Y, Huang JS, et al. (2001) Treatment of tumor in mice by oral administration of cytosine deaminase gene carried in live attenuated *Salmonella*. *Acta Biochim Biophys Sinica* 33:233–237.
57. Yuhua L, Kunyuan G, Hui C, Yongmei X, Chaoang S, Xun T, et al. (2001) Oral cytokine gene therapy against murine tumor using attenuated *Salminella typhiurium*. *Int J Cancer* 94:438–443. PMID: [11745427](#)
58. Toso JF, Gill VJ, Hwu P, Marincola FM, Restifo NP, Schwartzentruber DJ, et al. (2002) Phase I study of the intravenous administration of attenuated *Salmonella typhimurium* to patients with metastatic melanoma. *J Clin Oncol* 20:142–152. PMID: [11773163](#)
59. Zhao M, Suetsugu A, Ma H, Zhang L, Liu F, Zhang Y, et al. (2012) Efficacy against lung metastasis with a tumor-targeting mutant of *Salmonella typhimurium* in immunocompetent mice. *Cell Cycle* 11:187–193. doi: [10.4161/cc.11.1.18667](#) PMID: [22186786](#)
60. Tome Y, Zhang Y, Momiyama M, Maehara H, Kanaya F, Tomita K, et al. (2013) Primer dosing of *S. typhimurium* A1-R potentiates tumor-targeting and efficacy in immunocompetent mice. *Anticancer Res* 33:97–102. PMID: [23267132](#)