

# Protein patterning by microcontact printing using pyramidal PDMS stamps

Luisa Filipponi<sup>1</sup> · Peter Livingston<sup>1</sup> · Ondřej Kašpar<sup>2</sup> · Viola Tokárová<sup>2</sup> · Dan V. Nicolau<sup>1,2</sup>

Published online: 19 January 2016

© The Author(s) 2016. This article is published with open access at Springerlink.com

**Abstract** Micro-contact printing,  $\mu$ CP, is a well-established soft-lithography technique for printing biomolecules.  $\mu$ CP uses stamps made of Poly(dimethylsiloxane), PDMS, made by replicating a microstructured silicon master fabricated by semiconductor manufacturing processes. One of the problems of the  $\mu$ CP is the difficult control of the printing process, which, because of the high compressibility of PDMS, is very sensitive to minute changes in the applied pressure. This over-sensitive response leads to frequent and/or uncontrollable collapse of the stamps with high aspect ratios, thus decreasing the printing accuracy and reproducibility. Here we present a straightforward methodology of designing and fabricating PDMS structures with an architecture which uses the collapse of the stamp to reduce, rather than enlarge the variability of the printing. The PDMS stamp, organized as an array of pyramidal micro-posts, whose ceiling collapses when pressed on a flat surface, replicates the structure of the silicon master fabricated by anisotropic wet etching. Upon application of pressure, depending on the size of, and the pitch between, the PDMS pyramids, an air gap is formed surrounding either the entire array, or individual posts. The printing technology,

which also exhibits a remarkably low background noise for fluorescence detection, may find applications when the clear demarcation of the shapes of protein patterns and the distance between them are critical, such as microarrays and studies of cell patterning.

**Keywords** Poly(dimethylsiloxane) microstructures · Protein patterning · Microcontact printing · Soft-lithography · Protein microarrays

## 1 Introduction

Patterning proteins on surfaces have multiple applications in the area of biomedical microdevices, such as microarrays (Allison et al. 2006; Müller and Nicolau 2005), lab-on-a-chip (Chin et al. 2012), biosensors and bioMEMS (Mujahid et al. 2013), as well in the area of functional studies for cell and tissue development (Kane et al. 1999; Nicolau et al. 1996; Nicolau et al. 1999a). The patterning of proteins can be achieved by their immobilisation from solution in contact with surfaces presenting pre-fabricated patterns, using either selective covalent binding (Ivanova et al. 2002; Lenci et al. 2011; Nicolau et al. 1998, 1999b), or more rarely selective adsorption (Lan et al. 2005; Nicolau et al. 1999b). This strategy, which typically uses photolithographic techniques (Fodor et al. 1991), and even standard resist materials (Ivanova et al. 2002; Nicolau et al. 1998, 1999b), has the inherent advantage of high resolution of printing, at the expense of high cost of ownership and possible low signal/noise ratio due to the non-specific binding from protein solutions on areas outside the pattern of interest. Alternatively, protein patterns can be created by direct deposition methods, such as projection-based printing, e.g., ink-jet printing (Pardo et al. 2003), or based on laser microablation (Dobroiu et al. 2010), or

---

**Electronic supplementary material** The online version of this article (doi:10.1007/s10544-016-0036-4) contains supplementary material, which is available to authorized users.

---

✉ Dan V. Nicolau  
dan.nicolau@mcgill.ca

<sup>1</sup> Industrial Research Institute Swinburne, Faculty of Engineering and Industrial Science, Swinburne University of Technology, PO Box 218, VIC 3122, Australia

<sup>2</sup> Faculty of Engineering, Department of Bioengineering, McGill University, Macdonald Engineering Building, Room 378, 817 Sherbrooke Street West, Montreal, QC H3A 0C3, Canada

contact-based printing, e.g., classical pin printing (Rowland et al. 2012), dip pen lithography (Huo et al. 2008), or microcontact printing,  $\mu$ CP (Bernard et al. 1998; Kumar et al. 1994).  $\mu$ CP has a special place in the panoply of direct deposition methods, because it is capable of very high resolution of printing, at a low cost of ownership, thus making it widely used in exploratory research (Delamarche et al. 2003; Delamarche et al. 1997; Kane et al. 1999; Renault et al. 2003). These advantages have led to attempts of applying  $\mu$ CP in many various applications, e.g., patterning neuronal cells (Nicolau et al. 1996; Thiebaud et al. 2002), fundamental studies of cell viability and growth as a function of available space (Amirpour et al. 2001; Chen et al. 1997; Ghosh et al. 2008; Nicolau et al. 1999a), and various microarray and lab-on-a-chip applications (Didar et al. 2012; Hoshino et al. 2014). Protein  $\mu$ CP can be applied to a large variety of substrates such as glass (plain or treated) (Bou Chakra et al. 2008), SAM-coated gold slides (Lee et al. 2008), and polymers, such as polystyrene (Bernard et al. 1998; Bernard et al. 2000).

Although there are several variations of  $\mu$ CP technology (Kaufmann and Ravoo 2010; Kim et al. 2008; Wolfe et al. 2010), all are based on a core process: (i) fabrication of a ‘master’, usually made of silicon using standard microlithography, which presents profiled topographies on its surface; (ii) casting a viscous pre-polymer, usually Poly(dimethylsiloxane), PDMS, on the master; (iii) hardening, by curing, of this “relief stamp” followed by the detachment from the master; (iv) immersion of the stamp in the solution of an ‘ink’, e.g., a solution of a protein; and finally (v) application of the stamp against a flat surface, thus selectively transferring the ink from the elevated features to the target surface (Bernard et al. 2000).

Despite these advantages, the central feature of the  $\mu$ CP, i.e., the high compressibility of PDMS, is also the cause of one of important disadvantages: the collapse of the stamp, which leads to deleterious features, e.g., irregular shapes and sizes of the patterns (Huang et al. 2005; Zhou et al. 2005). The present work proposes a design of the master comprising pyramidal wells, which offers a better management of the collapse of the stamp, and better lithographic parameters.

## 2 Experimental details

### 2.1 Fabrication of the silicon masters and PDMS stamps

**Silicon master** The silicon master was fabricated by photolithography (spin coating the wafer with positive resist followed by pattern exposure and development), followed by anisotropic etching with a 28 % KOH solution along the  $\langle 100 \rangle$  crystallographic face of a silicon wafer, resulting in arrays of pyramidal wells (Ayeyard et al. 2010). The master comprised a variety of geometries, i.e., three series of arrays arranged in

two rows, each including three arrays of  $5 \times 5$  pyramidal wells. The wells forming the arrays in each row have same size (4 and 8  $\mu\text{m}$ ) but increasing inter-well distance (8, 16, 32  $\mu\text{m}$  for 4  $\mu\text{m}$  well size; and 10, 20, 40  $\mu\text{m}$  for 8  $\mu\text{m}$  well size; for detailed design of the silicon master see Supplementary Information – Fig. S11). The following nomenclature will be used throughout the text; i.e., [number1  $\mu\text{m}$  base]/[number2  $\mu\text{m}$  pitch] representing [the pyramidal base size]/[pitch size between two pyramids]. The wafers were cut into 1 cm  $\times$  1 cm chips, each comprising 60 microarrays, and further used as masters for the replication of PDMS stamps.

**PDMS stamp** The PDMS stamp was fabricated using polydimethylsiloxane (PDMS; Sylgard 184, Dow-Corning) following a well-known procedure (Duffy et al. 1998) with minor modifications. Briefly, ten parts of pre-polymer were mixed with one part of the cross-linker and degassed under vacuum for one hour. The mixture was then gently poured on top of the silicon master and cured for two hours at 65  $^{\circ}\text{C}$ . The cured polymer was then peeled off from the master and left at 85  $^{\circ}\text{C}$  overnight.

### 2.2 Protein patterning

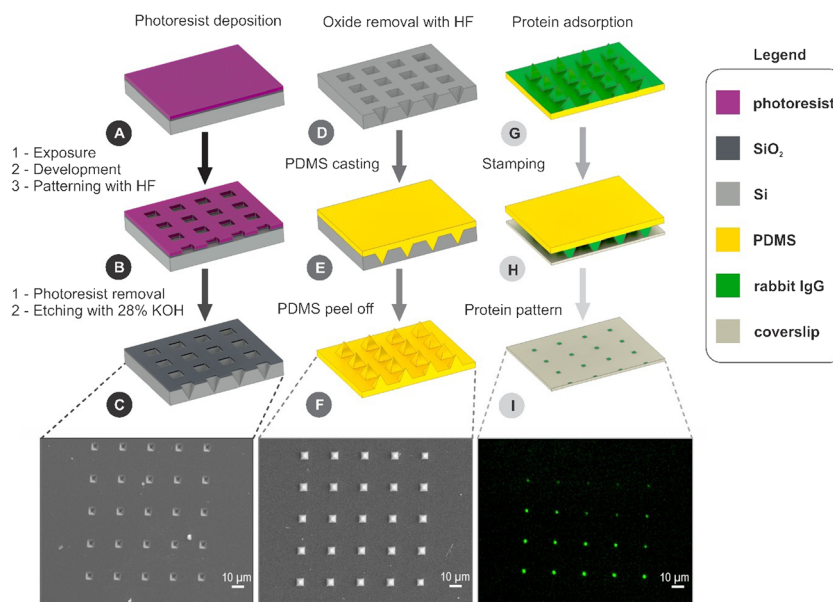
Rabbit IgG (2 mg/ml in PBS 10 mM, Molecular Probes), was diluted to 50  $\mu\text{g}/\text{mL}$  with PBS 10 mM (0.1 M phosphate buffer, 10 mM NaCl) and adsorbed over a freshly prepared PDMS stamp (100  $\mu\text{L}$ ) for 40 min. The stamp was subsequently rinsed thoroughly with PBS 10 mM ( $3 \times 100$  mL) and MilliQ water ( $3 \times 100$  mL), air dried and immediately stamped over a cleaned glass coverslip. Conformal contact was allowed to occur spontaneously and stamping was carried out for 60 s, at room temperature, without the use of additional pressure. Subsequently, the IgG-printed substrates have been incubated with a solution of secondary anti-rabbit IgG, Fluorescein labelled (same protocols as above) for 1 h. The fabrication of the Si masters, the PDMS stamps, and the  $\mu$ CP of protein patterns are presented in Scheme 1.

To compare the image quality of the  $\mu$ CP patterns and those obtained by classical microarrays, identical chemicals and solutions, (buffers, protein concentration, fluorophores) and processing conditions (humidity), have been also used to fabricate a microarray using an Inkjet robotic spotting MicroArraying System (PerkinElmer Piezorray) according to methodology described elsewhere (Abdo et al. 2005).

### 2.3 Imaging and analysis of the masters, stamps and protein patterns

The AFM imaging and analysis was carried out on an Explorer system (Thermo Microscopes) in the normal contact mode, captured by the SPMLab Version 5.01 software.

**Scheme 1** Graphical illustration and microscope images of silicon master fabrication (left column with SEM image), PDMS stamp preparation step (middle column with SEM image of the pyramidal features) and protein patterning steps (right column with fluorescent image of protein stamped on a glass slide)



Images were obtained using an 8 μm Z, linearized scanner (100 μm × 100 μm) under air conditions of temperature of 23 °C and 45 % relative humidity. The AFM probes used for this study were pyramidal-tipped, silicon nitride cantilevers with a spring constant of 0.032 N/m. The image analysis was performed using the program WSxM V3.0 Beta 9.3 (Nanotec Electronica S.L.) with the topographical and lateral force images processed by subtraction of background and adjustment of brightness and contrast.

The collapsed stamps have been imaged with an inverted microscope (Olympus IX71), at 40× magnification. Protein fluorescent patterns have been imaged using the same microscope with epifluorescence optics (FITC filter setting), and mercury light source. Images were collected using a Coolview FDI high-resolution camera (Photronics Science Ltd.) controlled by Image-Pro Plus software (Ver. 5.0, Media Cybernetics). Image analysis of the fluorescent images allowed the calculations of the Signal/Noise (S/N).

### 3 Results and discussion

#### 3.1 Analysis of the Si masters and PDMS stamps

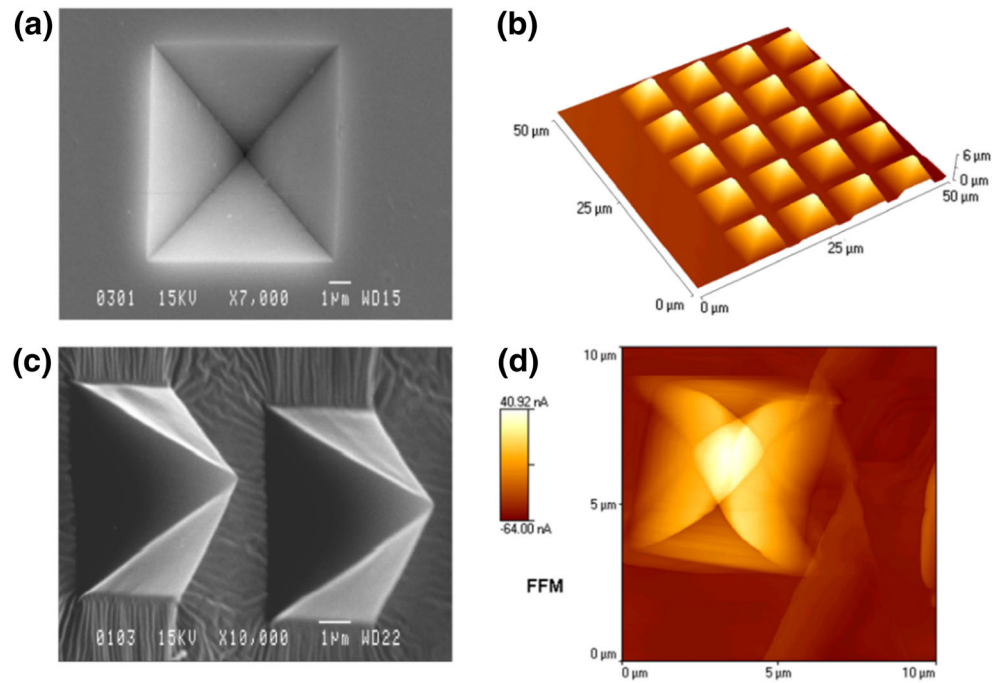
The designs of the Si masters to be replicated in PDMS stamps comprise calibrated features in the expectation that the dimensions of the footprint of the stamps will be replicated in the final patterns. However, the collapse of the PDMS stamps results in deviations from the designed geometry either in size, or shape, or both. For contact printing, the aspect ratio of the PDMS features, described as the ratio of the height to the width, of the feature, respectively (Delamarche et al. 1997), is usually in the range of 0.2 to 2. For pyramidal wells, the

aspect ratio can be defined as [height of the pyramid]/[width of the contact area during printing]. By applying different printing pressure, the width of the contact area increases and the height of the pyramid decreases (Hong et al. 2008). The design of Si masters presenting pyramidal wells has been used before (Filipponi et al. 2009; Hong et al. 2008; Schwinger et al. 2008), largely as a method to achieve very high resolution of the patterns without the high cost of ownership, or the need to fabricate very fine features in the Si master for PDMS replication.

The pyramidal wells replicate in the PDMS stamps with excellent fidelity, i.e., with less than 5 % variation between the dimensions of the master and those of the replica. Size analysis of the PDMS pyramids was confirmed by the AFM measurement as in agreement with the designed dimensions of the master (summarised in Tab. SI 1 of the Supporting Information). The aspect ratio of the PDMS stamps, as defined above, ranges from 22.5 when no pressure is applied on the stamp (Fig. 1) to 1.3 after collapse of pyramids in the process of printing (Fig. 2).

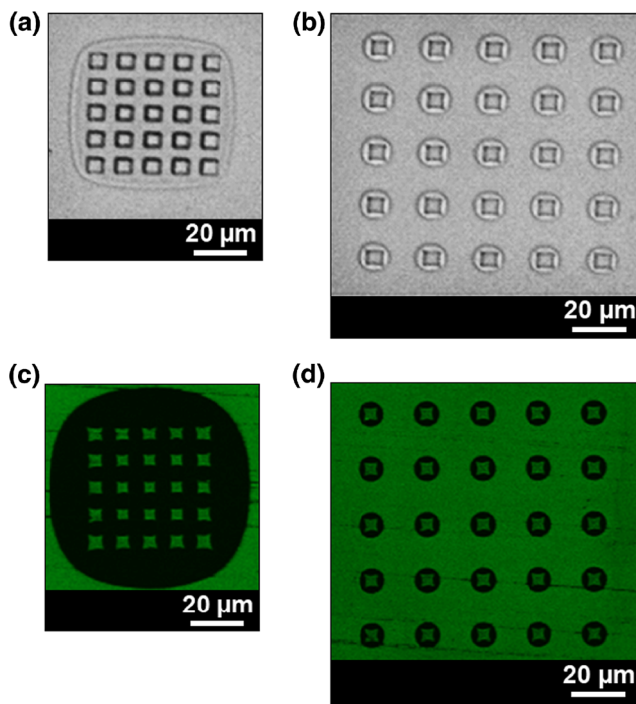
AFM analysis, performed by Lateral Force Mode (LFM), offers more insight into the nano-mechanics of the material of the PDMS stamp (Fig. 1d). LFM has been used to identify and localise different states and/or compositions of materials patches at nm-level, e.g., hybridization of DNA (Nicolau et al. 2005), localisation of protein immobilisation on polymers (Nicolau et al. 2010), composition of hair (Smith and Swift 2002), and, importantly, the morphology of polymer blends (Tsou and Waddell 2002; Žukiene et al. 2006). Recently it has been shown (Nikogeorgos et al. 2012) that the AFM contact mechanics are best modelled by treating the friction force as the sum of a load-dependent term (attributed to “ploughing”) and an area-dependent term (attributed

**Fig. 1** Imaging and analysis of the silicon masters and PDMS stamps. Left panel: SEM images of a well in the Si master (a) and of a PDMS pyramid (c). Right panel: AFM imaging and analysis of PDMS stamps. AFM imaging of an array of PDMS pyramids (b). Lateral Force Mode (LFM) scanning of an individual PDMS pyramid. While the topography of the PDMS structures presents a nearly perfect pyramidal shape (b), the analysis by LFM reveals the existence of a soft tip at the apex of the pyramid, which reversibly bends when in contact with the AFM tip (d)



to shearing, i.e., adsorption). Because the PDMS stamps are chemically-homogenous, and because the slope of their surface is constant, the LFM will only ‘read’ the local mechanical

properties of the stamp, via a “ploughing” factor (Nikogeorgos et al. 2012).



**Fig. 2** Top: Transmission images of controlled collapse of all size classes of the PDMS stamps for pyramidal features [4  $\mu\text{m}$  base/8  $\mu\text{m}$  pitch] (a) and [4  $\mu\text{m}$  base/16  $\mu\text{m}$  pitch] (b). The inter-well distance together with pyramidal dimensions result in air being trapped around the whole arrays (a and c), or around individual pyramids (b and d). Bottom: Epifluorescent images of two protein arrays, with the same dimensions as (a) and (b), fabricated via  $\mu\text{CP}$

### 3.2 PDMS stamp collapse

For elastomeric stamps, such as PDMS, which presents a high compressibility (Young’s modulus  $\approx 3$  MPa (Bietsch and Michel 2000)); and for features with high aspect ratios, the collapse of the stamp is an inherent process. This process often leads to deleterious effects, e.g., deviations in size and shape from the intended pattern, variations of concentrations in various parts of the printed area, and even printing in areas that should have been ink-free. Finally, the collapse of the stamp can take various forms (Sharp et al. 2004): (i) roof collapse of low aspect ratio recesses (Decré et al. 2005), (ii) buckling of high aspect ratio plates (Hui et al. 2002), and (iii) lateral sticking of high aspect ratio plates (Bietsch and Michel 2000), each with their specific negative impacts on the quality of printing. Because of its importance, the collapse of the PDMS stamps has been thoroughly investigated (Bietsch and Michel 2000; Decré et al. 2005; Hui et al. 2002; Jagota et al. 2002; Petrzela and Hardt 2012). As described elsewhere (Delamarche et al. 1997), in order to avoid or mitigate the unwanted structural deformations during  $\mu\text{CP}$ , the aspect ratio of PDMS features has to be in the range of 0.2 to 2, and the inter-feature distance should not exceed 20 times their height. While the pyramidal profile of the PDMS stamps have been used occasionally in the past (Filipponi et al. 2009; Hong et al. 2008; Schwinger et al. 2008), most of the above mentioned analyses refer to rectangular, or cylindrical profiles of the stamps.

Similarly to previous studies using rectangular (or cylindrical) PDMS pillar, when collapsing occurs, the base plane of the PDMS pattern makes contact with the substrate, and an air gap is trapped between the base plane and the printing substrate (Bietsch and Michel 2000). Depending on the size of the PDMS and the distance between them, the collapse of the stamp results in two types of architectures. If the distance between the pyramids is large enough, e.g., 16  $\mu\text{m}$  and 40  $\mu\text{m}$  for pyramidal structures with 4  $\mu\text{m}$  and 8  $\mu\text{m}$  base size, respectively, the roof collapses around the rectangular imprint of the pyramidal tip. Conversely, when the distance between pyramids is small enough, e.g., 8  $\mu\text{m}$  for pyramidal base of 4  $\mu\text{m}$  and 10 and 20  $\mu\text{m}$  for 8  $\mu\text{m}$  base size, the roof collapses around the group of PDMS features (Fig. SI 2).

The use of the pyramidal architecture for the PDMS stamps has several advantages. First, the fabrication of the silicon masters is straightforward, as wet anisotropic etching avoids the use of Reactive Ion Etching, and it can be performed in essentially any laboratory. Second, and more importantly, the pyramidal shape of the stamp makes the collapse by buckling and by lateral sticking, i.e., two of the main collapse modes of PDMS stamps (Sharp et al. 2004), irrelevant. Third, the confinement of the softer material at the apex of the pyramids, as indicated by LFM analysis, has the potential to self-regulate the pattern size. Finally, the air trapped either around individual, or around groups of PDMS pillars, clearly demarcates the stamped patterns, thus potentially making their quantification easier.

### 3.3 $\mu\text{CP}$

PDMS is a highly hydrophobic elastomer, which efficiently adsorbs proteins from solution. Once the stamp is “inked” with a protein solution and placed in conformal contact with a surface, the protein layer is transferred from the stamp to the receiving substrate. During  $\mu\text{CP}$ , an air gap is formed around

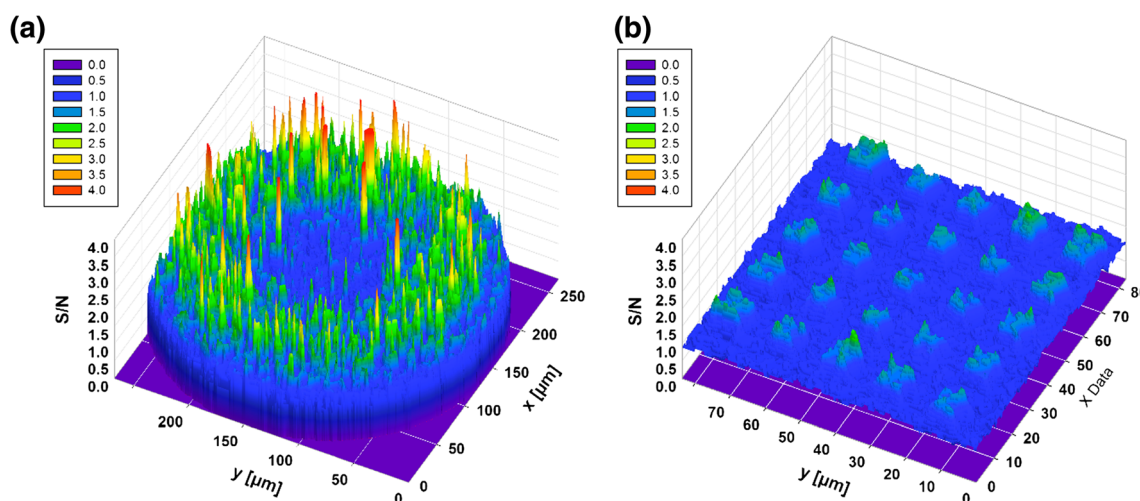
the densely packed arrays, and the result is an array of protein patterns with very sharp contours on a background with essentially no fluorescence. Consequently, the signal/noise ratio is very high. Figure 2 presents  $\mu\text{CP}$  protein patterns over a glass substrate using a protein solution of fluorescein-labelled anti-rabbit IgG.

These results suggest how  $\mu\text{CP}$  can be further used to pattern protein- or, more generally- biomolecule microarrays, where the single elements of the array are either individually separated, or enclosed in an area having same surface properties. The incubation of the patterned array with a second biomolecule solution would allow the fabrication of multiple patterns that could be useful in studies where biomolecule co-patterns are required, e.g., cell patterning.

### 3.4 Comparison between $\mu\text{CP}$ and ink jet-printed spots

Robotic spotting is one of the methods currently employed for the fabrication of protein microarrays, since it allows fast printing over large surfaces using pL quantities of protein solutions. Unfortunately, the method often leads to uneven adsorption of the protein within the spotted area, which is a result of a combination of effects, i.e., the temperature of the substrate, solution and printing environment, the viscosity of the solution, the type of protein spotted, and the type of substrate used, just to mention few. This creates spots having a typical ‘donut shape’. Also, surfaces that allow uniform and global attachment of a wide variety of proteins are not currently available, therefore the method requires optimizing the type of substrate used for the specific protein to be printed.

$\mu\text{CP}$  has been used to print a wide range of proteins over large areas with bioactivity retention and is therefore a possible alternative to robotic spotting for the fabrication of protein microarrays. In this context,  $\mu\text{CP}$  with pyramidal PDMS features allows the fabrication of arrays where its individual elements are similar in shape and intensity.



**Fig. 3** S/N 3D surface plot of a robotically printed spot (250  $\mu\text{m}$  wide) (a) and a  $\mu\text{CP}$  array [8  $\mu\text{m}$  base/20  $\mu\text{m}$  pitch] (b)

While the mean values of S/N are comparable (i.e., 1.42 for inkjet printing, and 1.54 for  $\mu$ CP), the standard deviation, and the variance of the fluorescence signal on a classical, ink jet-printed spot is considerably higher, i.e., 3 $\times$  and 9 $\times$ , respectively, than that of the array printed by  $\mu$ CP, for identical operational conditions, e.g., proteins, concentrations, washing, humidity, etc. (Fig. SI 3). This is also confirmed by 3D S/N graph visualization (Fig. 3).

## 4 Conclusions

A PDMS stamp having pyramid-like relief microfeatures organized in arrays collapses when placed over a flat substrate, with the consequent formation of a large air gap around the entire array or around each post composing the array, depending on the distance between the posts. A method that exploits the collapsing of such a PDMS pattern is presented. When high-density arrays are used,  $\mu$ CP allows the printing of patterns of labelled proteins in an array format, where the elements of the array have similar shape and similar fluorescent signal, with excellent signal-to-noise ratio. The method could be used for the fabrication of protein microarrays that are often fabricated with a robotic spotting method, frequently leading to spots having uneven protein adsorption.

**Acknowledgments** The study has been funded by Nanotechnology Victoria; DEST International Science Linkages Program (Grant CG090203), an European FP6 Programme (FP6/2002-2006) project Charged Particle Nanotechnology (CHARPAN, under grant agreement number 15803) and by the Canadian Foundation for Innovation (CFI) project BioNanoFactory. The authors wish to thank Dr. Michael Abdo and Prof. Peter Hudson of CSIRO Division of Health Sciences and Nutrition, Australia, for microarray experiments.

**Open Access** This article is distributed under the terms of the Creative Commons Attribution 4.0 International License (<http://creativecommons.org/licenses/by/4.0/>), which permits unrestricted use, distribution, and reproduction in any medium, provided you give appropriate credit to the original author(s) and the source, provide a link to the Creative Commons license, and indicate if changes were made.

## References

- M. Abdo, B. Irving, P. Hudson, H. Zola, Development of a cluster of differentiation antibody-based protein microarray. *J. Immunol. Methods* **305**(1), 3–9 (2005)
- D. B. Allison, X. Q. Cui, G. P. Page, M. Sabripour, Microarray data analysis: from disarray to consolidation and consensus. *Nat. Rev. Genet.* **7**(1), 55–65 (2006)
- M. L. Amirpour, P. Ghosh, W. M. Lackowski, R. M. Crooks, M. V. Pishko, Mammalian cell cultures on micropatterned surfaces of weak-acid, polyelectrolyte hyperbranched thin films on gold. *Anal. Chem.* **73**(7), 1560–1566 (2001)
- J. Ayeyard, T. Hedegaard, B. Bilenberg, D. V. Nicolau, Microfabricated magnetic bead polydimethylsiloxane microarrays. *Microelectron. Eng.* **87**(5–8), 760–764 (2010)
- A. Bernard, E. Delamarche, H. Schmid, B. Michel, H. R. Bosshard, H. Biebuyck, Printing patterns of proteins. *Langmuir* **14**(9), 2225–2229 (1998)
- A. Bernard, J. P. Renault, B. Michel, H. R. Bosshard, E. Delamarche, Microcontact printing of proteins. *Adv. Mater.* **12**(14), 1067–1070 (2000)
- A. Bietsch, B. Michel, Conformal contact and pattern stability of stamps used for soft lithography. *J. Appl. Phys.* **88**(7), 4310–4318 (2000)
- E. Bou Chakra, B. Hannes, G. Dilosquer, C. D. Mansfield, M. Cabrera, A new instrument for automated microcontact printing with stamp load adjustment. *Rev. Sci. Instrum.* **79**(6), 064102 (2008)
- C. S. Chen, M. Mrksich, S. Huang, G. M. Whitesides, D. E. Ingber, Geometric control of cell life and death. *Science* **276**(5317), 1425–1428 (1997)
- C. D. Chin, V. Linder, S. K. Sia, Commercialization of microfluidic point-of-care diagnostic devices. *Lab Chip* **12**(12), 2118–2134 (2012)
- M. M. J. Decré, P. H. M. Timmermans, O. Van Der Sluis, R. Schroeders, Numerical and experimental study of critical roof collapse conditions in soft lithography. *Langmuir* **21**(17), 7971–7978 (2005)
- E. Delamarche, C. Donzel, F. S. Kamounah, H. Wolf, M. Geissler, R. Stutz, P. Schmidt-Winkel, B. Michel, H. J. Mathieu, K. Schaumburg, Microcontact printing using poly(dimethylsiloxane) stamps hydrophilized by poly(ethylene oxide) silanes. *Langmuir* **19**(21), 8749–8758 (2003)
- E. Delamarche, H. Schmid, B. Michel, H. Biebuyck, Stability of molded polydimethylsiloxane microstructures. *Adv. Mater.* **9**(9), 741–746 (1997)
- T. F. Didar, A. M. Foudeh, M. Tabrizian, Patterning multiplex protein microarrays in a single microfluidic channel. *Anal. Chem.* **84**(2), 1012–1018 (2012)
- S. Dobroiu, F. C. M. J. M. van Delft, E. van Thiel, K. L. Hanson, D. V. Nicolau, Laser-assisted structuring of metal-polymer bilayers for protein patterning. *Microelectron. Eng.* **87**(5–8), 1190–1194 (2010)
- D. C. Duffy, J. C. McDonald, O. J. A. Schueller, G. M. Whitesides, Rapid prototyping of microfluidic systems in poly(dimethylsiloxane). *Anal. Chem.* **70**(23), 4974–4984 (1998)
- L. Filipponi, P. D. Sawant, F. Fulga, D. V. Nicolau, Microbeads on microposts: an inverted architecture for bead microarrays. *Biosens. Bioelectron.* **24**(7), 1850–1857 (2009)
- S. P. A. Fodor, J. L. Read, M. C. Pirrung, L. Stryer, A. T. Lu, D. Solas, Light-directed, spatially addressable parallel chemical synthesis. *Science* **251**(4995), 767–773 (1991)
- M. Ghosh, C. Alves, Z. Tong, K. Tettey, K. Konstantopoulos, K. J. Stebe, Multifunctional surfaces with discrete functionalized regions for biological applications. *Langmuir* **24**(15), 8134–8142 (2008)
- J. M. Hong, F. M. Ozkeskin, J. Zou, A micromachined elastomeric tip array for contact printing with variable dot size and density. *J. Micromech. Microeng.* **18**(1) (2008)
- K. Hoshino, G. Bhave, E. Ng, X. J. Zhang, Micro patterned quantum dots excitation and imaging for cellular microarray screening. *Sensor Actuat a-Phys* **216**, 301–307 (2014)
- Y. G. Y. Huang, W. X. Zhou, K. J. Hsia, E. Menard, J. U. Park, J. A. Rogers, A. G. Alleyne, Stamp collapse in soft lithography. *Langmuir* **21**(17), 8058–8068 (2005)
- C. Y. Hui, A. Jagota, Y. Y. Lin, E. J. Kramer, Constraints on microcontact printing imposed by stamp deformation. *Langmuir* **18**(4), 1394–1407 (2002)
- F. W. Huo, Z. J. Zheng, G. F. Zheng, L. R. Giam, H. Zhang, C. A. Mirkin, Polymer pen lithography. *Science* **321**(5896), 1658–1660 (2008)
- E. P. Ivanova, J. P. Wright, D. Pham, L. Filipponi, A. Viezzoli, D. V. Nicolau, Polymer microstructures fabricated via laser ablation used for multianalyte protein microassay. *Langmuir* **18**(24), 9539–9546 (2002)

- Jagota, A., Sharp, K.G., Kristunas, D.F., 2002. Stamp deformation during microcontact printing. pp. 93–99.
- R. S. Kane, S. Takayama, E. Ostuni, D. E. Ingber, G. M. Whitesides, Patterning proteins and cells using soft lithography. *Biomaterials* **20**(23–24), 2363–2376 (1999)
- T. Kaufmann, B. J. Ravoo, Stamps, inks and substrates: polymers in microcontact printing. *Polym. Chem.* **1**(4), 371–387 (2010)
- P. Kim, K. W. Kwon, M. C. Park, S. H. Lee, S. M. Kim, K. Y. Suh, Soft lithography for microfluidics: a review. *Biochip Journal* **2**(1), 1–11 (2008)
- A. Kumar, H. A. Biebuyck, G. M. Whitesides, Patterning self-assembled monolayers - applications in materials science. *Langmuir* **10**(5), 1498–1511 (1994)
- S. Lan, M. Veiseh, M. Q. Zhang, Surface modification of silicon and gold-patterned silicon surfaces for improved biocompatibility and cell patterning selectivity. *Biosens Bioelectron* **20**(9), 1697–1708 (2005)
- T. C. Lee, P. C. Chen, T. Y. Lai, W. Tuntiwechapikul, J. H. Kim, T. R. Lee, Aliphatic dithiocarboxylic acids: new adsorbates for soft lithographic patterning. *Appl. Surf. Sci.* **254**(21), 7064–7068 (2008)
- S. Lenci, L. Tedeschi, F. Pieri, C. Domenici, UV lithography-based protein patterning on silicon: towards the integration of bioactive surfaces and CMOS electronics. *Appl. Surf. Sci.* **257**(20), 8413–8419 (2011)
- A. Mujahid, N. Iqbal, A. Afzal, Bioimprinting strategies: from soft lithography to biomimetic sensors and beyond. *Biotechnol. Adv.* **31**(8), 1435–1447 (2013)
- U. R. Müller, D. V. Nicolau, *Microarray technology and its applications* (Springer, 2005)
- D. V. Nicolau, E. P. Ivanova, F. Fulga, L. Filippini, A. Viezzoli, S. Dobroiu, Y. V. Alekseeva, D. K. Pham, Protein immobilisation on micro/nanostructures fabricated by laser microablation. *Biosens. Bioelectron.* **26**(4), 1337–1345 (2010)
- D. V. Nicolau, D. K. Plam, E. P. Ivanova, J. P. Wright, R. Lenigk, T. Smekal, P. Grodzinski, Tone reversal of an AFM lateral force image due to hybridization of oligonucleotides immobilized on polymers. *Small* **1**(6), 610–613 (2005)
- D. V. Nicolau, T. Taguchi, H. Tanigawa, S. Yoshikawa, Control of the neuronal cell attachment by functionality manipulation of diazonaphthoquinone/novolak photoresist surface. *Biosens Bioelectron* **11**(12), 1237–1252 (1996)
- D. V. Nicolau, T. Taguchi, H. Taniguchi, H. Tanigawa, S. Yoshikawa, Patterning neuronal and glia cells on light-assisted functionalised photoresists. *Biosens Bioelectron* **14**(3), 317–325 (1999a)
- D. V. Nicolau, T. Taguchi, H. Taniguchi, S. Yoshikawa, Micron-sized protein patterning on diazonaphthoquinone/novolak thin polymeric films. *Langmuir* **14**(7), 1927–1936 (1998)
- D. V. Nicolau, T. Taguchi, H. Taniguchi, S. Yoshikawa, Negative and positive tone protein patterning on e-beam/deep-UV resists. *Langmuir* **15**(11), 3845–3851 (1999b)
- N. Nikogeorgos, C. A. Hunter, G. J. Leggett, Relationship between molecular contact thermodynamics and surface contact mechanics. *Langmuir* **28**(51), 17709–17717 (2012)
- L. Pardo, W. C. Wilson, T. J. Boland, Characterization of patterned self-assembled monolayers and protein arrays generated by the ink-jet method. *Langmuir* **19**(5), 1462–1466 (2003)
- J. E. Petrzalka, D. E. Hardt, Static load-displacement behavior of PDMS microfeatures for soft lithography. *J. Micromech. Microeng.* **22**(7) (2012)
- J. P. Renault, A. Bernard, A. Bietsch, B. Michel, H. R. Bosshard, E. Delamarche, M. Kreiter, B. Hecht, U. P. Wild, Fabricating arrays of single protein molecules on glass using microcontact printing. *J Phys Chem B* **107**(3), 703–711 (2003)
- M. M. Rowland, D. H. Gong, H. E. Bostic, N. Lucas, W. Cho, M. D. Best, Microarray analysis of Akt PH domain binding employing synthetic biotinylated analogs of all seven phosphoinositide headgroup isomers. *Chem. Phys. Lipids* **165**(2), 207–215 (2012)
- W. Schwinger, E. Lausecker, I. Bergmair, M. Grydlik, T. Fromherz, C. Hasenfuß, R. Schöftner, Fabrication of Nano-gold islands with  $\mu\text{m}$  spacing using 2.5 dimensional PDMS stamps. *Microelectron. Eng.* **85**(5–6), 1346–1349 (2008)
- K. G. Sharp, G. S. Blackman, N. J. Glassmaker, A. Jagota, C. Y. Hui, Effect of stamp deformation on the quality of microcontact printing: theory and experiment. *Langmuir* **20**(15), 6430–6438 (2004)
- J. R. Smith, J. A. Swift, Lamellar subcomponents of the cuticular cell membrane complex of mammalian keratin fibres show friction and hardness contrast by AFM. *J. Microsc.* **206**(3), 182–193 (2002)
- P. Thiebaud, L. Lauer, W. Knoll, A. Offenhausser, PDMS device for patterned application of microfluids to neuronal cells arranged by microcontact printing. *Biosens Bioelectron* **17**(1–2), 87–93 (2002)
- A. H. Tsou, W. H. Waddell, Morphology of elastomer blends by dynamic AFM. *KGK-Kautschuk und Gummi Kunststoffe* **55**(7–8), 382–387 (2002)
- Wolfe, D.B., Qin, D., Whitesides, G.M., 2010. Rapid prototyping of microstructures by soft lithography for biotechnology. *Methods in molecular biology* (Clifton, N.J.) 583, 81–107.
- W. Zhou, Y. Huang, E. Menard, N. R. Aluru, J. A. Rogers, A. G. Alleyne, Mechanism for stamp collapse in soft lithography. *Appl. Phys. Lett.* **87**(25) (2005)
- K. Žukienė, V. Jankauskaite, S. Petraitienė, AFM lateral force imaging of modified polychloroprene: a study based on roughness analysis. *Appl. Surf. Sci.* **253**(2), 966–973 (2006)