

CORRIGENDUM

DOI: 10.3892/or.2019.7055

NHE1 is upregulated in gastric cancer and regulates gastric cancer cell proliferation, migration and invasion

RUI XIE, HAIBO WANG, HAI JIN, GUORONG WEN, BIGUANG TUO and JINGYU XU

Oncol Rep 37: 1451-1460, 2017; DOI: 10.3892/or.2017.5386

After the publication of the article, the authors informed us that they had consent from the patients involved in the study, but not from the next-of-kin of the patients, for their clinical data to have been published (Fig. 1A-E). Following on from a request made by the Ethics Committee of the Affiliated Hospital of Zunyi Medical College that these data either be replaced in the article, or that the article be retracted, the authors identified 10 new volunteers and asked the patients and their families to sign informed consent according to ethical requirements. The experiments were repeated according to the previous experimental design, and novel data were obtained. The results obtained were consistent with the previous clinical data. The revised version of Fig. 1, including the data from the new patients, is shown opposite. As stated, the revised data shown for Fig. 1A-E do not affect the overall conclusions reported in the paper. The authors apologize to the Editor of *Oncology Reports* and to the readership for any inconvenience caused.



This work is licensed under a Creative Commons Attribution 4.0 International (CC BY 4.0) License.

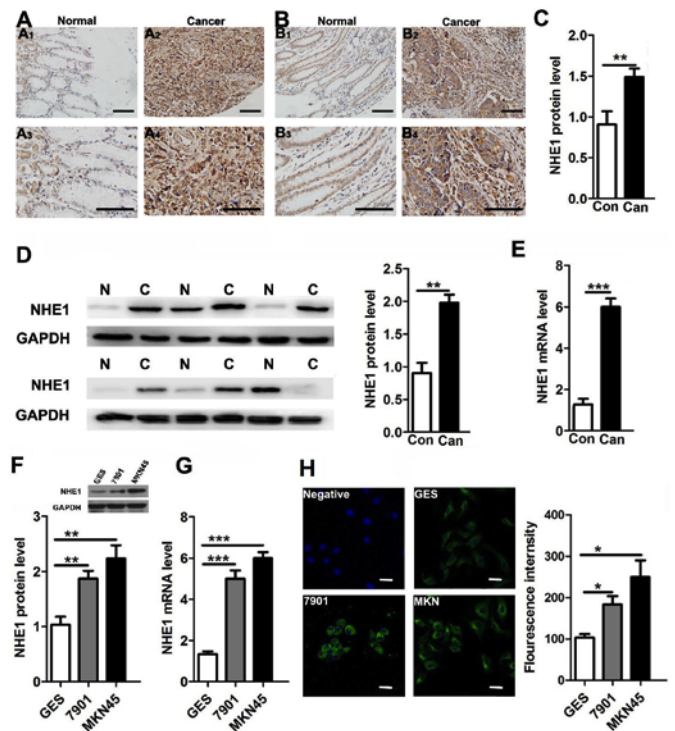


Figure 1. Enhanced expression of NHE1 in human gastric cancer (GC) tissues and cell lines. (A-C) Comparison of NHE1 protein expression through immunohistochemical analysis of human gastric cancer biopsy tissues (Can) and paraneoplastic normal tissues (Con) (** $P < 0.01$, $n = 10$ pairs of samples for NHE1 expression analysis). The scale bars in A1, A3, B1 and B3 represent 50 μm . The scale bars in A2, A4, B2 and B4 represent 25 μm . (D) Western blot analysis of the NHE protein in human GC (C) (six samples shown) and normal (N) (six samples shown) tissues probed with anti-NHE1 (91 kDa) antibodies. GAPDH served as the protein loading control (** $P < 0.01$, $n = 15$). (E) Histogram showing summary data on NHE1 mRNA expression in human gastric cancer biopsy tissues (Can) and paraneoplastic normal tissues (Con) (*** $P < 0.001$, $n = 15$). (F and G) Western blot and qPCR analyses of NHE1 protein and mRNA expression in a human normal gastric epithelial cell line (GES-1) and gastric cancer cell lines (SGC-7901 and MKN-45) (** $P < 0.01$, *** $P < 0.001$, $n = 3$ independent experiments). (H) Representative immunofluorescence imaging of NHE1 protein staining in GES-1, sGC-7901 and MKN-45 cells and a negative control. The scale bar is 25 μm ($P < 0.05$, $n = 3$ independent experiments).