


 Cite this: *RSC Adv.*, 2021, 11, 899

The importance of intramolecular hydrogen bonds on the translocation of the small drug piracetam through a lipid bilayer†

 João T. S. Coimbra,¹ Ralph Feghali, Rui P. Ribeiro,[‡] Maria J. Ramos¹ and Pedro A. Fernandes^{1*}

The number of hydrogen bond donors and acceptors is a fundamental molecular descriptor to predict the oral bioavailability of small drug candidates. In fact, the most widely used oral bioavailability rules (such as the Lipinsky's rule-of-five and the Veber rules) make use of this molecular descriptor. It is generally assumed that hydrogen bond donors and acceptors impact on passive diffusion across cell membranes, a fundamental event during drug absorption and distribution. Although the relationship between the number of these motifs and the probability of having good oral bioavailability has been studied and described for more than 20 years, little attention has been given to their spatial distribution in the molecule. In this paper, we used molecular dynamics to describe the effect of intramolecular hydrogen bonding on the passive diffusion of a small drug (piracetam) through a lipid membrane. The results indicated that the formation of an intramolecular hydrogen bond decreases the barrier for translocation by ca. 4 kcal mol⁻¹ and increases the permeability of the tested molecule, partially compensating the desolvation penalty arising from the penetration of the drug into the biological membrane core. This effect was apparent in simulations where the formation of this interaction was prevented with the help of modified potentials, and in simulations with a similar compound to piracetam that was not able to form this intramolecular hydrogen bond due to a larger distance between the hydrogen bond donor and acceptor groups. These results were also supported by coarse-grained methods, which are becoming an important resource for sampling a larger chemical space of molecules, with reduced computational effort. Furthermore, entropy and enthalpy derived profiles were also obtained as the compounds translocated across the membrane, suggesting that, even though the process of formation of internal hydrogen bonds is entropically unfavorable, the enthalpic gain is such that the formation of these interactions is beneficial for the passive diffusion across cell membranes.

 Received 25th November 2020
 Accepted 2nd December 2020

DOI: 10.1039/d0ra09995c

rsc.li/rsc-advances

Introduction

Hydrogen bonds are important interactions in biochemistry as these can play key roles in molecular recognition,^{1–3} structural stability,^{3,4} enzyme catalysis,^{5–7} and drug partition and permeability.^{8–11} The existence of functional groups in a drug that are capable of forming hydrogen bonds, can increase its solubility and the ability to establish important interactions with its biomolecular targets, driving potent binding and selectivity.¹²

However, too many hydrogen bond donors/acceptors can have a deleterious effect on the drug's membrane partition and

permeability.¹² These polar groups can decrease the affinity toward the hydrophobic membrane region and also increase the water desolvation penalty upon penetration of the drug.¹² Since a drug, apart from having the desired bioactivity, needs to demonstrate favorable pharmacokinetics, a proper balance between lipophilicity and hydrophilicity is thus crucial. In that regard, drug-like character predictors, such as Lipinski's rule-of-five (Ro5)¹³ or Veber's rules¹⁴ have been using the number of hydrogen bond donors/acceptors as a molecular descriptor. Conversely, recent studies have shown that in the post Ro5 era, drug candidate attrition due to poor pharmacokinetics and/or bioavailability has decreased significantly.^{15–17}

More recently, interest has been spiking for drugs that lie outside the Ro5 criteria.¹⁸ There have been a few compounds that while outside the Ro5 chemical space, have still shown favorable cell permeation and oral bioavailability. Furthermore, it has been also shown that the Ro5 properties have been inflating with time.¹⁹

LAQV, REQUIMTE, Departamento de Química e Bioquímica, Faculdade de Ciências, Universidade do Porto, Rua do Campo Alegre, s/n, 4169-007 Porto, Portugal. E-mail: paferman@fc.up.pt

† Electronic supplementary information (ESI) available: Complementary figures (Fig. S1–S3) and coarse-grained topology files. See DOI: 10.1039/d0ra09995c

‡ Current address: Department of Biotechnology, University of Verona, Strada Le Grazie 15, I-37134 Verona, Italy.



There have been a few strategies to increase the cell permeability outside the Ro5 chemical space, and these are mainly related to the reduction or shielding of polarity by *N*-methylation, bulky side chains and intramolecular hydrogen bonds (IMHBs).¹⁸ IMHBs can be formed, when a hydrogen bond donor and acceptor are in proximity in the same molecule. These interactions can work as molecular switches in drugs and may create two sets of conformations: (i) open conformations that should be more soluble in water, and (ii) closed conformations that can shield polarity relative to the open conformation, and thus result in higher lipophilicity and membrane permeability.²⁰ IMHBs have been recognized as an efficient strategy to limit the negative impact on the pharmacokinetics of a drug, while not necessarily preventing the adoption of a different conformation upon binding with its biomolecular target.⁹ Several studies have now shown improved membrane permeability resultant from IMHBs, including small molecules and compounds outside the Ro5 chemical space, such as cyclic peptides and macrocycles.²¹

Due to the intrinsic flexibility that is granted by IMHB, their experimental characterization is still limited.²² In this regard, computational simulations have provided important information on these interactions extending the limits of current experiments.^{18,22} Molecular dynamics (MD) simulations, for instance, can offer a practical solution to efficiently sample the conformational space of molecules that are able to form IMHBs, and that can display different sets of conformations depending on the properties of the surrounding media.²³

This work attempts to get a finer, atomic-level understanding of the influence of IMHB on the membrane translocation with MD simulations. For that, we have chosen a small drug, 2-oxo-1-pyrrolidine acetamide (**PCT**, piracetam) that serves as a good model for the study. **PCT** is a small and polar molecule that shows a bioavailability close to 100%, despite its hydrophilicity ($\log P_{\text{oct}}$ of -1.54 determined by the “shake flask” method).^{24,25} In previous MD simulations we have already shown that **PCT** is able to form an IMHB between the oxo group in the pyrrolidine ring structure and the amide group, while at the center of the bilayer.²⁶

In this work, we have employed all-atom MD simulations to quantify the impact of the IMHB in the free energy profile of the membrane translocation of **PCT**, which has not been previously addressed. We have done so by also studying the translocation of a related compound, 3-oxo-1-pyrrolidine acetamide (here labelled as **PCM**). The two studied molecules are represented in Fig. 1. The two molecules are isomers that share most properties important for permeation (molecular weight, number of HBDA, number of rotatable bonds), but **PCM** cannot form an IMHB due to a higher distance between the donor and acceptor groups in the molecule. By comparing the free energy profiles for the translocation of the two molecules, we highlight the influence of this IMHB on the membrane translocation process. Using flat-bottom potentials, we have also restrained **PCT** and prevented the formation of the IMHB as the compound migrates from the water phase to the bilayer's center. In this way, we wanted to evaluate how much the chemical

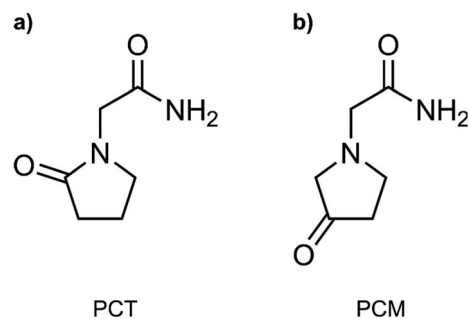


Fig. 1 Compounds evaluated in this study. (a) 2-oxo-1-pyrrolidine acetamide (**PCT**, piracetam); (b) 3-oxo-1-pyrrolidine acetamide (here labelled as **PCM**).

modification in **PCM** was affecting the free energy profile due to collateral electronic or stereochemical effects.

Lastly, to get a better understanding of the thermodynamic driving forces for the membrane translocation of **PCT** and **PCM**, and using both all-atom and coarse-grained (CG) MD simulations, we have also spatially resolved the entropy and enthalpy profiles upon translocation. Coarse-grained (CG) models have been successfully employed in the past to explore drug-membrane translocation.²⁷ Due to its reduced computational effort, the CG approach is often considered when one needs to work with large scale models and/or if the system requires extensive sampling. The latter applies here, as a proper thermodynamic characterization of the translocation process requires extensive sampling. Hence, the combination of all-atom and CG MD simulations would increase the confidence in our conclusions. Furthermore, these near-atomic resolution methods have been successfully employed in high-throughput MD simulations to explore the drug-membrane permeability across a large chemical space of drug-like compounds.²⁸

Methodology

System modeling

Our all-atom hydrated bilayer model system was composed of 64 1,2-dioleoyl-*sn*-glycero-3-phosphocholine (DOPC) lipids (32 lipids per leaflet), a hydration level of 70 water molecules per lipid, and NaCl ions (*ca.* 0.15 M). It was assembled using the CHARMM-GUI interface.^{29–31} For describing the lipids, we have used the SLipids force field,^{32,33} which has been shown to reproduce very accurately the structure of biological membranes and the energetics of membrane associated events, such as drug partition.³⁴ This force field has been also demonstrated to be compatible with the AMBER force fields.³⁵ We employed the TIP3P water model³⁶ and used ff99SBildn³⁷ ion parameters present in GROMACS.^{38–40} After an initial minimization and equilibration of the system, we have inserted two replicas of the studied compounds at different bilayer depths in the simulation box: one of the replicas was inserted in the water phase, and the other at the center of the lipid bilayer (see next sections for details). The compounds were parameterized with the general AMBER force field (GAFF)⁴¹ following a standard procedure, *i.e.* the atomic point charges were derived following

a restrained electrostatic potential (RESP) procedure⁴² at the HF/6-31G(d) level of theory, to be coherent with the rest of the force field. The antechamber⁴³ and Gaussian09 (ref. 44) software were used for this regard. Structure and topology files were converted to GROMACS compatible extension by using the ACPYPE tool.⁴⁵

Coarse-grained (CG) hydrated bilayer systems were also generated with the CHARMM-GUI interface, and using the MARTINI 2.0 force field for lipids and polarizable water.^{46,47} A total of 128 DOPC lipids (64 lipids per leaflet), and 2562 polarizable water beads were employed, again with a 0.15 M ionic concentration. The PCT and PCM molecules were also parameterized with the MARTINI force field, using the AUTO-MARTINI scheme.⁴⁸ The CG topology files for PCT and PCM are provided in the ESI.† For adding the solute molecules in the hydrated bilayer system, we have employed the same protocol as for the all-atom simulations.

Molecular dynamics simulations parameters

The all-atom simulations were performed with the GROMACS 2018 software, with the Verlet cut-off scheme. A non-bonded cut-off value of 1.2 nm was employed. The LINCS constraint algorithm⁴⁹ was applied to all bonds involving hydrogen atoms, which allowed for an integration time step of 2 fs. Temperature was set to 298.15 K with the Nose-Hoover thermostat (1.0 ps time constant for coupling),^{50,51} and a semi-isotropic pressure scaling to 1 atm was maintained with the Parrinello-Rahman barostat (5 ps time constant for coupling).^{52,53} During the NPT equilibration, the Berendsen barostat was employed.⁵⁴ Dispersion corrections were applied to energy and pressure terms. Periodic boundary conditions were considered, and long range electrostatic interactions were treated by a Particle Mesh Ewald (PME) scheme.⁵⁵ The center of mass motion was removed in a linear fashion and individually for the upper and lower leaflets and the rest of the system (including the solvent, ions and the two solute molecules).

The CG MD simulations were also performed with GROMACS 2018 software using the Verlet cut-off scheme. A non-bonded cut-off of 1.1 nm was employed. Temperature was set to 298.15 K with the v-rescale thermostat (1.0 ps time constant for coupling),⁵⁶ and a semi-isotropic pressure scaling to 1 atm was maintained with the Parrinello-Rahman barostat (12 ps time constant for coupling). A 10 fs integration time step was employed. Long range electrostatic interactions were treated by a reaction-field scheme using a relative dielectric constant of 2.5. The center of mass motion was removed in a linear fashion for the entire system.

Umbrella sampling simulations and analysis

The hydrated bilayers coming from CHARMM-GUI were minimized and equilibrated in the NVT and NPT ensembles. Subsequently, an NPT conventional MD simulation of 300 ns was run. From the density profiles and as in previous works,⁵⁷⁻⁵⁹ we have defined a four-region model to aid in the analysis of the PMFs. Region I contained only the hydrophobic lipid tails. Region II contained both hydrophobic tails and the initial

portion of the polar headgroup density, ending where the lipid tail density intercepted the choline density. Region III contained most of the charged phosphate and choline density. Finally, region IV was composed primarily of bulk water, and a small portion of the lipid's headgroup density.

Two replicas of each compound were inserted at different bilayer depths using the last structure of the previous run – one in the water phase and the other near the bilayer's center. The interactions with the hydrated bilayer system were then gradually switched on during 20 ns, with the compounds harmonically restrained to the initial positions relative to the bilayer's COM (with a harmonic force constant of 477.7 kcal mol⁻¹ nm⁻²). Afterwards, a constant pulling simulation of 50 ns was performed to sample the desired translocation coordinate (pulling rate of -0.000074 nm ps⁻¹). The translocation coordinate in this case was defined by the COM distance between the solute and the lipid bilayer and was discretized into 38 sampling windows spaced by 0.1 nm. This comprised the COM distances of [-3.5; 0.2] nm and [-0.2; 3.5] nm, depending on whether the compound started in the water phase or near the center of the bilayer. Then production runs were performed for 160 ns (with a harmonic force constant of 358.3 kcal mol⁻¹ nm⁻²). The binding free energy, $\Delta G_{\text{bind}}^{\circ}$, was then derived from the energy profile using eqn (1):⁶⁰⁻⁶²

$$\Delta G_{\text{bind}}^{\circ} = -k_{\text{B}}T \ln \left(\frac{1}{2z_{\text{b}}} \int_{-z_{\text{b}}}^{z_{\text{b}}} e^{-\beta w(z)} dz \right) \quad (1)$$

where $z_{\text{b}} = 3.4$ nm represents the distance at which the potential of mean force (PMF), $w(z)$, is zero and $\beta = 1/k_{\text{B}}T$, where T is adjusted to the temperature in which the profiles were generated, and k_{B} represents the Boltzmann constant. The partition coefficient, P can then be derived using eqn (2):⁶¹

$$P = e^{-\beta \Delta G_{\text{bind}}^{\circ}} \quad (2)$$

For the calculation of the binding free energies we have considered the energy profiles produced from the last 100 ns of each window of the production runs. These were assessed with the weighted histogram analysis method (WHAM) tool^{63,64} present in GROMACS 2018. A bootstrapping analysis (200 bootstraps) was also performed to assess for the error of the energy profile. Unsymmetrized energy profiles are shown as ESI† to assess convergence (see ESI, Fig. S1†).

For spatially resolving the enthalpy and entropy profiles as the compounds translocate the bilayer, we have used the finite difference (FD) of the free energy with respect to temperature.^{60,65} The free energy was decomposed in its entropic and enthalpic components using eqn (3) and (4):

$$-T\Delta S = T \frac{dG}{dT} \approx \frac{T}{2\Delta T} (G(T + \Delta T) - G(T - \Delta T)) \quad (3)$$

$$\Delta H = \Delta G + T\Delta S \quad (4)$$

The FD approach has been described to perform generally well, provided that enough sampling is performed and that sufficiently large temperature gaps are considered.⁶⁵ In this

case, the umbrella sampling simulations were run at three additional temperatures – 283.15 K, 313.15 K and 328.15 K. A total of 180 ns per window were run for each of the mentioned temperatures (with a harmonic force constant of $358.3 \text{ kcal mol}^{-1} \text{ nm}^{-2}$). Initial configurations of each umbrella window were obtained after the previous production runs at 298.15 K. By combining different temperature pairs to calculate the entropic component of translocation, we were able to estimate the uncertainty of our calculations from the standard deviation of these multiple estimates.

The protocol for the coarse-grained simulations was very similar to the all-atom simulations. The only difference resided on the simulated time scales. For the umbrella sampling production runs at 298.15 K, each window was simulated for 220 ns. For the spatially resolved entropy and enthalpy profiles, each window from the three additional temperatures was also simulated for 220 ns. In the case of the coarse-grained simulations a harmonic force constant of $477.7 \text{ kcal mol}^{-1} \text{ nm}^{-2}$ was always employed. Analysis of the free energy profiles was conducted using the last 150 ns of the production runs.

The permeability coefficient was calculated using the inhomogeneous solubility-diffusion model (ISDM),^{66,67} in which the resistivity, R , and permeability, P_m , are obtained *via* eqn (5):

$$R = \frac{1}{P} = \int_{z_1}^{z_2} \frac{\exp[\beta w(z)]}{D(z)} dz \quad (5)$$

where $D(z)$ is the local diffusivity coefficient, β is the thermodynamic beta ($\beta = 1/k_B T$), and z the collective variable describing the position of the permeant along the bilayer's normal.

For the position-dependent diffusivities, $D(z)$, we have used the generalized Langevin method, using eqn (6):

$$D(z = \langle z \rangle) = \frac{\text{var}(z)^2}{\int_0^\infty C_{zz}(t) dt} \quad (6)$$

in which the diffusion coefficient is estimated from the integral of the auto-correlation function, C_{zz} , of z and the variance of z .⁶⁸ A more detailed discussion can be found in the literature.^{27,69–72} In our case, the auto-correlation function and from it the $D(z)$ estimates were performed using 5 ns intervals for the last 100 ns of the MD simulations. When the autocorrelation function dropped to values below 0.05 times the variance, the calculation of integral of this function was stopped. We ended up with 20 estimates for $D(z)$ per window, which were then averaged.

Although the ISDM has led to varied results for the permeability of large solutes,⁸ its applicability to small permeants has been deemed fit.⁷² So, for the purposes of this study we have decided to include the permeability data for **PCT** and **PCM** using only the ISDM.

Using flat-bottom potentials, we have also restrained **PCT** and prevented the formation of the IMHB as the compound migrates from the water phase to the bilayer's center. Therefore, for the entire translocated distance, we have defined a flat-bottom potential, where at an interatomic distance of the oxo group of the pyrrolidine ring and the nitrogen atom of the amide group below *ca.* 0.4 nm, a harmonic potential with a force constant of $1194.2 \text{ kcal mol}^{-1} \text{ nm}^{-2}$ was employed.

We used the GROMACS native analysis tools to analyze other aspects, such as the polar surface area (PSA) and hydrogen bonds along the bilayer's normal. Visual inspection was attained with the VMD 1.9.3 software.⁷³

Results and discussion

In this study, we have explored the translocation of the small drug piracetam (**PCT**) across a hydrated phospholipidic bilayer

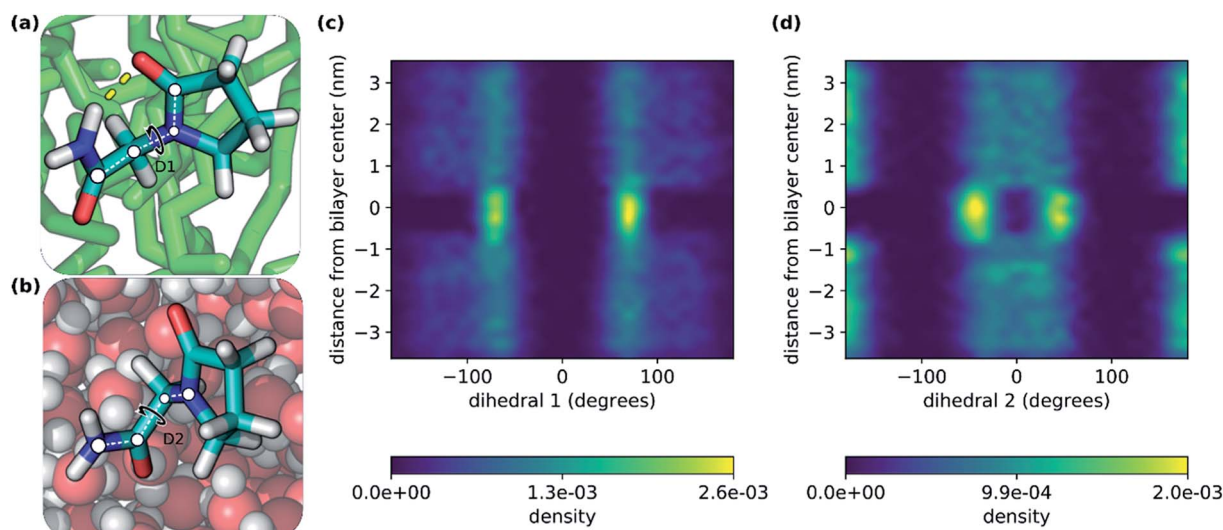


Fig. 2 Dihedral angle and conformational analysis of **PCT** as it translocated the bilayer. (a and b) representation of two conformers of piracetam – in the middle of the membrane and in water, respectively; (c and d) representation of the D1 and D2 dihedral angles populations along the axis perpendicular to the plane of the bilayer. The range of *ca.* –1 to 1 nm with respect to the *y* axis, contains only the hydrophobic lipid tails, and has the lowest density of the entire system. The dihedral angles, D1 and D2, and the IMHB that was formed in (a), were also represented (IMHB, dashed yellow line; D1 and D2, white circles and white dashed lines).

model system, to study the impact of an IMHB in the permeation of this molecule. In a previous study, we have observed that, in aqueous solvent, the hydrogen donor and acceptor groups of **PCT** form hydrogen bonds with water molecules. But, when **PCT** dives deeply into the center of the membrane, its hydrogen bond donor and acceptor groups make an IMHB, compensating, at least in part, for the desolvation cost, reducing its polar surface area and overall favoring the interaction with the bilayer's hydrophobic core.²⁶

In Fig. 2, we can see two conformations of **PCT** derived from the MD simulations done here: (i) where the IMHB is formed and that is more prevalent in the hydrophobic core of the bilayer (Fig. 2a); and (ii) an extended conformation where the IMHB is not formed (Fig. 2b). In Fig. 2, we have also represented the behavior of two dihedral angles that describe the two flexible bonds present in **PCT** (Fig. 2c and d). In accordance with previous studies, we saw that as **PCT** approached the bilayer center, the populations for the two dihedral angles were more focused around the specific values that allow for the formation of an IMHB.

We have decided to extend this study, to quantify the impact of the IMHB to the translocation of **PCT** (including its partition and permeability) and also measure the thermodynamic quantities that are influencing this process, by decomposing the free energy profile into its enthalpic and entropic components.

Fig. 3a shows the representation of the hydrated bilayer system and partial density profiles for the different functional groups or molecules in the system, followed by the translocation profile of **PCT** in Fig. 3b, in which we have obtained a profile similar to the one of our previous work.²⁶ As **PCT** approaches the bilayer from the water phase, and after a small decrease in the free energy profile to $-0.2 \text{ kcal mol}^{-1}$, we observed a very small increase in region III to $0.1 \text{ kcal mol}^{-1}$. Then, we saw a shallow minimum (*ca.* $-0.9 \text{ kcal mol}^{-1}$) in the most heterogeneous region of the lipid bilayer, region II, that should dominate the partition of this compound to the bilayer. Then the free energy profile increased to a maximum of $6.1 \text{ kcal mol}^{-1}$ in region I of the bilayer, finding a plateau while at the center.

From the analysis of the hydrogen bonds (h-bond) profiles along the translocated coordinate in Fig. 3c, we observed the formation of an IMHB in region I of the hydrated bilayer system. We also observed that at *ca.* 0.5 nm from the bilayer center, **PCT** was not establishing any h-bonds with water or lipid molecules. The polar surface area (PSA) analysis (see ESI, Fig. S1†), also shows that while in region I, **PCT** decreases its PSA (from $64.8 \pm 1.6 \text{ \AA}^2$ in the water phase to $60.0 \pm 1.6 \text{ \AA}^2$ in the center), thus, in principle, this should favor the affinity for this region.

To measure the impact of the IMHB in the partition and permeability of **PCT**, we have then modified the chemical structure of **PCT**, by changing the oxo group to a different position in the pyrrolidine ring structure (see Fig. 1b). In this way, the modified compound, which we have labelled as **PCM**, was not able to form the IMHB due to the distance between the hydrogen bond donor and acceptor groups.

As the modified **PCM** molecule went from the water phase to the lipid bilayer headgroups (region IV, III and II), we observed a very similar profile to that of **PCT** (see Fig. 3b). However, as the compound penetrated deeply into the membrane and approached the bilayer center (region I), the free energy profile changed in relation to **PCT**, increasing more and up to a maximum of $10.1 \text{ kcal mol}^{-1}$ (4 kcal mol^{-1} above **PCT**). Furthermore, and in contrast with **PCT**, we did not observe a plateau for **PCM**, while in region I. The free energy of transfer

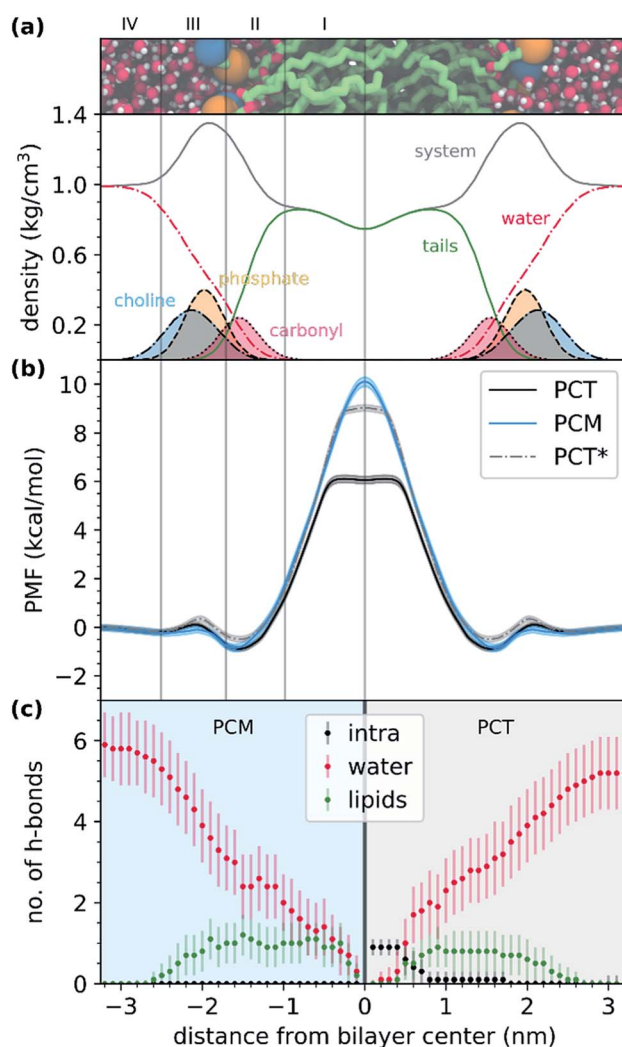


Fig. 3 Free energy and hydrogen bond profiles of **PCT** and **PCM** in a DOPC hydrated bilayer model system. (a) Representation of the hydrated bilayer system and partial density profiles for the different functional groups or molecules in the system. (b) Free energy profiles for the translocation of the two tested compounds (**PCT**, black and **PCM**, blue) and for the simulation of **PCT** where a flat-bottom potential was employed to hold the donor and acceptor groups at a distance that hinders the formation of the IMHB (**PCT***, grey). (c) Number of hydrogen bonds (h-bonds) along the translocated distance. We have outlined the number of h-bonds established between the compounds and water (red) or membrane (green), and the number of intramolecular h-bonds considering both compounds (black). In the right (with a grey background), we show the results for **PCT**; and in the left (with a blue background), we show the results for **PCM**.

of **PCM** rose continually. This can be explained by looking at the h-bond profiles in Fig. 3c, because **PCT** replaces the lost hydrogen bonds it was making with the solvent by an IMHB, whereas **PCM** cannot make such compensation. Comparing the two free energy profiles, and if the difference comes essentially from the IMHB, this means that an IMHB can lower the free energy barrier for translocation by as much as 4 kcal mol⁻¹.

In Table 1, we summarize the partition and permeability coefficients for both compounds, together with the average PSA in water (at 3.4 nm from the bilayer center) and at the bilayer's center (at 0.0 nm). Altogether, our results suggest that **PCM** and **PCT** have a very similar partition to this bilayer system, but they present distinct permeability coefficients, dominated by the high energy barrier at the middle of the bilayer. In fact, **PCT** showed a log P_m almost 2 times higher than **PCM**, when determined by the ISDM. We also saw that the permeability estimate should be dominated by the free energy profile, because the diffusivity calculations gave essentially the same results for both molecules, as expected by their similar structure (see ESI, Fig. S2†). The constant PSA profile of **PCM** and the hydrogen bond analysis along the translocation coordinate, also indicated that **PCM** was not forming an IMHB.

Then, we have studied the translocation of **PCT**, while applying a flat-bottom potential to impair the formation of the IMHB in this molecule. We have done so, by restraining the interatomic distance of the nitrogen atom of the amide group and the oxo group of the pyrrolidine ring, to values that do not allow the formation of the IMHB in **PCT** (see Methods section). Even though we focused the discussion in the **PCM** molecule in this work, because **PCM** is synthesizable and experimentally testable, the artificially restrained **PCT** molecule, confirms that the difference in the translocation profiles of **PCT** and **PCM** was due to the IMHB and not due to the different chemical properties that the modification could induce (for instance, due to different point charges of the molecules).

We observed that the PMF for the restrained **PCT** molecule increased to 9.0 kcal mol⁻¹ in the middle of the bilayer (3 kcal mol⁻¹ more than **PCT** and close to the **PCM** value of 10.1 kcal mol⁻¹). This result suggested that the main difference in the free energy profiles of **PCT** and **PCM** was mainly due to the formation of the IMHB.

Additionally, we have also decomposed the free energy profile in its two components: enthalpic and entropic. We have done so, for both **PCT** and **PCM** molecules. Since the enthalpic and entropic components are difficult to obtain due to their difficult convergence,^{60,65} we proposed to evaluate these profiles

using both all-atom simulations and coarse-grained molecular dynamics (CGMD) simulations. In CGMD, the molecular representation of the system was simplified, and we ended up with less degrees of freedom.

First, we evaluated the PMF of **PCT** and **PCM** using a coarse-grained model. Comparing the results with those from all-atom simulations in Fig. 4, we observed a very similar trend. Even though the free energy minimum are more pronounced for the CG simulations and the **PCT** and **PCM** molecules differ in their partition to the bilayer, the energy barrier for crossing, measured by the difference between the minimum and maximum values of the free energy profile, is still higher for the **PCM** molecule, by almost 2.0 kcal mol⁻¹. A different perspective of Fig. 4 is given in ESI (see Fig. S3†) for comparing the free energy profiles and their components as calculated by the all-atoms and coarse-grained physical models.

In Fig. 4, we have represented the entropic ($-T\Delta S$) and enthalpic (ΔH) profiles that have been derived from coarse-grained (Fig. 4a) and all-atom (Fig. 4b) MD simulations. These

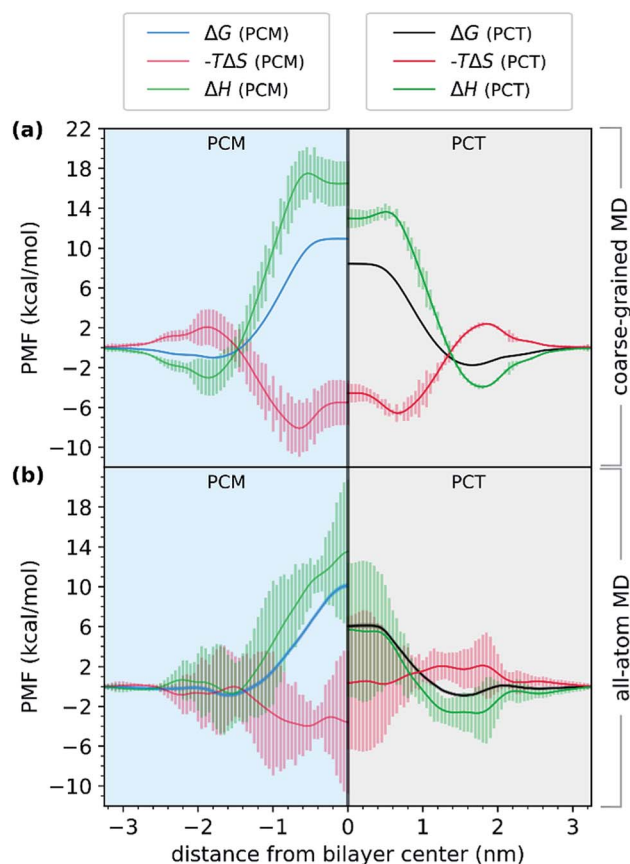


Fig. 4 Thermodynamic profiles of **PCT** and **PCM** in a DOPC hydrated bilayer model system. (a) Thermodynamic profiles derived from the CGMD simulations (ΔG , black and blue; $-T\Delta S$, red; ΔH , green). (b) Thermodynamic profiles derived from the all-atom MD simulations (ΔG , black and blue; $-T\Delta S$, red; ΔH , green). In the right panels (with a grey background), we show the energy profiles for **PCT**; and in the left panels (with a blue background), we show the results for **PCM**. Vertical bars represent the uncertainty of the estimates and were derived from the multiple determinations of entropy per system that were made (see Methods section for details).

Table 1 Partition (log P), permeability (log P_m) and polar surface area (PSA) of the tested compounds (**PCT** and **PCM**) in the DOPC hydrated bilayer system

Compound	log P	log P_m / cm s ⁻¹	PSA	PSA
			(at $z = 3.4$ nm)/ Å ²	(at $z = 0.0$ nm)/ Å ²
PCT	0.07 ± 0.05	-3.34	64.8 ± 1.6	60.0 ± 1.6
PCM	0.05 ± 0.04	-5.82	65.6 ± 1.4	65.2 ± 1.5

profiles were calculated for both **PCT** and **PCM** compounds. Considering the CGMD simulations results, we observed that the major difference between the **PCT** and **PCM** molecules was in the ΔH component. We saw that in the center of the bilayer, ΔH increased to $18.2 \text{ kcal mol}^{-1}$ in the case of **PCM**, and just $14.1 \text{ kcal mol}^{-1}$ in the case of **PCT**. Hence, the CGMD simulations indicated that the **PCM** translocation is enthalpically unfavorable in the center of the bilayer, when compared with **PCT**. The same tendency was found for the all-atom MD simulations, even though the errors of this estimate were much higher. This result would make sense, considering that **PCM**, in contrast to **PCT**, cannot establish an IMHB. Furthermore, **PCT** should also present more favorable interactions with the membrane hydrophobic core, because the IMHB that is formed while **PCT** is at the center of the bilayer also decreases the PSA of **PCT** in comparison with **PCM**.

As for the entropic component, represented as $-T\Delta S$, and considering the CGMD simulations, the profiles were very similar, with **PCM** showing only a slightly more favorable entropic profile (on average), as it approached the bilayer. When considering the all-atom MD simulations, the results were different. The entropic profile of **PCM** seemed to be more favorable than **PCT**, as both molecules approached the bilayer. However, we can see that the errors were higher for these estimates, so any conclusions should be drawn carefully. It would make sense that **PCM** would present a more favorable entropic profile, if considering that it presented (on average) one more h-bond with water molecules, and that it was not able to establish an IMHB while at the center. Consequently, the desolvation of **PCM** as it translocated the bilayer would release more water molecules and the conformational flexibility of **PCM** would be also higher than **PCT**'s, because the geometry of the molecule is not constrained by an IMHB. Nonetheless, the unfavorable enthalpic profile of **PCM** seemed to dominate the entropic gain, thus decreasing the permeability of this molecule when compared with **PCT**.

Altogether, our results suggested that the difference between the barriers of **PCT** and **PCM**, while at the center of the bilayer, are dominated by enthalpy. Furthermore, the partition of both molecules to the bilayer's polar region, seemed to be enthalpically favored. Compared to other studies in the literature,⁶⁰ we have also found a favorable entropic component ($-T\Delta S$) as the compounds approached the middle of the bilayer, and an unfavorable $-T\Delta S$ as the compound approached the highest density region of the system. Others have suggested that this effect was mostly due to the acyl chains' conformational entropy and the available free volume distribution in the membrane.⁶⁰ Even though, these estimates are affected by large errors (in particular for the all-atom simulations), a combination with CGMD simulations allowed us to provide a more robust interpretation to the enthalpic and entropic profiles, increasing the confidence in our conclusions.

Conclusions

In this study, we have used MD simulations to describe the effects of an intramolecular hydrogen bond (IMHB) on the

passive diffusion of a small drug (piracetam) through a lipid membrane. We have done so, by performing chemical modifications on the structure of piracetam (**PCT**), and in this way, preventing the formation of the IMHB. The new compound, **PCM**, presented the same partition constant to the membrane model, but showed a very different permeability coefficient. In fact, the permeability of **PCM** was much lower than **PCT**, due to the higher free energy for the transfer. The reduction in the free energy barrier for the transfer was calculated in 4 kcal mol^{-1} . This reinforced that this IMHB was very important for the translocation of piracetam.

These results were also confirmed, by using flat-bottom potentials to inhibit the formation of this IMHB in **PCT**. With this test, we confirmed that the differences in the transfer free energy profile between **PCT** and **PCM** were essentially due to the absence of the internal hydrogen bond, and not due to other factors, such as different point atomic charges on the molecules.

By combining all-atom and coarse-grained MD simulations, we also decomposed the free energy profiles into their enthalpic and entropic components. Our results suggested that the main free energy difference between **PCT** and **PCM** was enthalpically driven, with **PCM** showing a more unfavorable enthalpy in the middle of the membrane. This is supported by the fact that **PCT** forms an IMHB as it approaches the middle of the bilayer. The inherent reduction on the PSA upon formation of the IMHB should also protect polar groups from a very hydrophobic environment, thus favoring the interactions with the core of the membrane.

Altogether, we have shown the potential of MD simulations, from all-atom to coarse-grained levels of resolution, to spatially resolve thermodynamic profiles as the compounds translocate hydrated bilayer systems. This allowed us to extract both thermodynamic and kinetic information for the translocation process. We have also shown the potential of MD simulations, of not only measuring the effect of orthogonal degrees of freedom to the translocation of molecules, but also the effects of modifications in the permeant to the same process.

Conflicts of interest

There are no conflicts of interest to declare.

Acknowledgements

This work was supported by the Applied Molecular Biosciences Unit – UCIBIO, which is financed by national funds from FCT/MCTES – Portuguese Foundation for Science and Technology within the scope of the project UID/Multi/04378/2019 and by the Associate Laboratory for Green Chemistry Unit – LAQV, which is financed by national funds from FCT/MCTES within the scope of the project UIDB/50006/2020. The work was also supported by the European Union (FEDER funds through COMPETE), and by “Programa Operacional Regional do Norte” (NORTE 2020) under the PORTUGAL 2020 Partnership Agreement, through the European Regional Development Fund (ERDF): project NORTE-01-0145-FEDER-000024. JTSC has received financial support

from the scientific employment stimulus – individual call of 2018 (CEECIND/01374/2018). We acknowledge PRACE for awarding us access to MareNostrum at Barcelona Supercomputing Center (BSC), Spain. We thank Dr Óscar Passos for technical assistance.

References

- 1 D. Santos-Martins and S. Forli, Charting Hydrogen Bond Anisotropy, *J. Chem. Theory Comput.*, 2020, **16**(4), 2846–2856.
- 2 S. W. Pedersen, S. B. Pedersen, L. Anker, G. Hultqvist, A. S. Kristensen, P. Jemth and K. Stromgaard, Probing backbone hydrogen bonding in PDZ/ligand interactions by protein amide-to-ester mutations, *Nat. Commun.*, 2014, **5**, 3215.
- 3 A. V. Morozov and T. Kortemme, Potential Functions for Hydrogen Bonds in Protein Structure Prediction and Design, *Adv. Protein Chem.*, 2005, **72**, 1–38.
- 4 C. N. Pace, H. L. Fu, K. L. Fryar, J. Landua, S. R. Trevino, D. Schell, R. L. Thurlkill, S. Imura, J. M. Scholtz, K. Gajiwala, J. Sevcik, L. Urbanikova, J. K. Myers, K. Takano, E. J. Hebert, B. A. Shirley and G. R. Grimsley, Contribution of hydrogen bonds to protein stability, *Protein Sci.*, 2014, **23**(5), 652–661.
- 5 R. P. P. Neves, P. A. Fernandes and M. J. Ramos, Mechanistic insights on the reduction of glutathione disulfide by protein disulfide isomerase, *Proc. Natl. Acad. Sci. U.S.A.*, 2017, **114**(24), E4724–E4733.
- 6 A. R. Calixto, M. J. Ramos and P. A. Fernandes, Conformational diversity induces nanosecond-timescale chemical disorder in the HIV-1 protease reaction pathway, *Chem. Sci.*, 2019, **10**(30), 7212–7221.
- 7 L. Simon and J. M. Goodman, Enzyme Catalysis by Hydrogen Bonds: The Balance between Transition State Binding and Substrate Binding in Oxyanion Holes, *J. Org. Chem.*, 2010, **75**(6), 1831–1840.
- 8 C. J. Dickson, V. Hornak, R. A. Pearlstein and J. S. Duca, Structure-Kinetic Relationships of Passive Membrane Permeation from Multiscale Modeling, *J. Am. Chem. Soc.*, 2017, **139**(1), 442–452.
- 9 S. B. Rafi, B. R. Hearn, P. Vedantham, M. P. Jacobson and A. R. Renslo, Predicting and Improving the Membrane Permeability of Peptidic Small Molecules, *J. Med. Chem.*, 2012, **55**(7), 3163–3169.
- 10 W. Shinoda, Permeability across lipid membranes, *Biochim. Biophys. Acta Biomembr.*, 2016, **1858**(10), 2254–2265.
- 11 T. Rezai, J. E. Bock, M. V. Zhou, C. Kalyanaraman, R. S. Lokey and M. P. Jacobson, Conformational flexibility, internal hydrogen bonding, and passive membrane permeability: Successful in silico prediction of the relative permeabilities of cyclic peptides, *J. Am. Chem. Soc.*, 2006, **128**(43), 14073–14080.
- 12 A. Alex, D. S. Millan, M. Perez, F. Wakenhut and G. A. Whitlock, Intramolecular hydrogen bonding to improve membrane permeability and absorption in beyond rule of five chemical space, *Medchemcomm*, 2011, **2**(7), 669–674.
- 13 C. A. Lipinski, F. Lombardo, B. W. Dominy and P. J. Feeney, Experimental and computational approaches to estimate solubility and permeability in drug discovery and development settings, *Adv. Drug Delivery Rev.*, 1997, **23**(1–3), 3–25.
- 14 D. F. Veber, S. R. Johnson, H. Y. Cheng, B. R. Smith, K. W. Ward and K. D. Kopple, Molecular properties that influence the oral bioavailability of drug candidates, *J. Med. Chem.*, 2002, **45**(12), 2615–2623.
- 15 D. Cook, D. Brown, R. Alexander, R. March, P. Morgan, G. Satterthwaite and M. N. Pangalos, Lessons learned from the fate of AstraZeneca's drug pipeline: a five-dimensional framework, *Nat. Rev. Drug Discov.*, 2014, **13**(6), 419–431.
- 16 I. Khanna, Drug discovery in pharmaceutical industry: productivity challenges and trends, *Drug Discov. Today*, 2012, **17**(19–20), 1088–1102.
- 17 I. Kola and J. Landis, Can the pharmaceutical industry reduce attrition rates?, *Nat. Rev. Drug Discov.*, 2004, **3**(8), 711–715.
- 18 P. Matsson, B. C. Doak, B. Over and J. Kihlberg, Cell permeability beyond the rule of 5, *Adv. Drug Delivery Rev.*, 2016, **101**, 42–61.
- 19 P. D. Leeson and B. Springthorpe, The influence of drug-like concepts on decision-making in medicinal chemistry, *Nat. Rev. Drug Discov.*, 2007, **6**(11), 881–890.
- 20 B. Kuhn, P. Mohr and M. Stahl, Intramolecular Hydrogen Bonding in Medicinal Chemistry, *J. Med. Chem.*, 2010, **53**(6), 2601–2611.
- 21 G. Caron, J. Kihlberg and G. Ermondi, Intramolecular hydrogen bonding: An opportunity for improved design in medicinal chemistry, *Med. Res. Rev.*, 2019, **39**(5), 1707–1729.
- 22 F. Colizzi, A. Hospital, S. Zivanovic and M. Orozco, Predicting the Limit of Intramolecular Hydrogen Bonding with Classical Molecular Dynamics, *Angew. Chem. Int. Ed.*, 2019, **58**(12), 3759–3763.
- 23 J. Witek, B. G. Keller, M. Blatter, A. Meissner, T. Wagner and S. Riniker, Kinetic Models of Cyclosporin A in Polar and Apolar Environments Reveal Multiple Congruent Conformational States, *J. Chem. Inf. Model.*, 2016, **56**(8), 1547–1562.
- 24 C. Altomare, S. Cellamare, A. Carotti, G. Casini, M. Ferappi, E. Gavuzzo, F. Mazza, P. A. Carrupt, P. Gaillard and B. Testa, X-Ray Crystal-Structure, Partitioning Behavior, and Molecular Modeling Study of Piracetam-Type Nootropics - Insights into the Pharmacophore, *J. Med. Chem.*, 1995, **38**(1), 170–179.
- 25 B. Winblad, Piracetam: A review of pharmacological properties and clinical uses, *CNS Drug Rev.*, 2005, **11**(2), 169–182.
- 26 R. P. Ribeiro, J. T. S. Coimbra, M. J. Ramos and P. A. Fernandes, Diffusion of the small, very polar, drug piracetam through a lipid bilayer: an MD simulation study, *Theor. Chem. Acc.*, 2017, **136**, 46.
- 27 H. A. L. Filipe, M. Javanainen, A. Salvador, A. M. Galvao, I. Vattulainen, L. M. S. Loura and M. J. Moreno, Quantitative Assessment of Methods Used To Obtain Rate Constants from Molecular Dynamics Simulations-

- Translocation of Cholesterol across Lipid Bilayers, *J. Chem. Theory Comput.*, 2018, **14**(7), 3840–3848.
- 28 R. Menichetti, K. H. Kanekal and T. Bereau, Drug-Membrane Permeability across Chemical Space, *ACS Cent. Sci.*, 2019, **5**(2), 290–298.
- 29 S. Jo, T. Kim, V. G. Iyer and W. Im, CHARMM-GUI: a web-based graphical user interface for CHARMM, *J. Comput. Chem.*, 2008, **29**(11), 1859–1865.
- 30 E. L. Wu, X. Cheng, S. Jo, H. Rui, K. C. Song, E. M. Davila-Contreras, Y. F. Qi, J. M. Lee, V. Monje-Galvan, R. M. Venable, J. B. Klauda and W. Im, CHARMM-GUI Membrane Builder Toward Realistic Biological Membrane Simulations, *J. Comput. Chem.*, 2014, **35**(27), 1997–2004.
- 31 Y. F. Qi, H. I. Ingolfsson, X. Cheng, J. Lee, S. J. Marrink and W. Im, CHARMM-GUI Martini Maker for Coarse-Grained Simulations with the Martini Force Field, *J. Chem. Theory Comput.*, 2015, **11**(9), 4486–4494.
- 32 J. P. M. Jambeck and A. P. Lyubartsev, Derivation and Systematic Validation of a Refined All-Atom Force Field for Phosphatidylcholine Lipids, *J. Phys. Chem. B*, 2012, **116**(10), 3164–3179.
- 33 J. P. M. Jambeck and A. P. Lyubartsev, An Extension and Further Validation of an All-Atomistic Force Field for Biological Membranes, *J. Chem. Theory Comput.*, 2012, **8**(8), 2938–2948.
- 34 M. Paloncova, G. Fabre, R. H. DeVane, P. Trouillas, K. Berka and M. Otyepka, Benchmarking of Force Fields for Molecule-Membrane Interactions, *J. Chem. Theory Comput.*, 2014, **10**(9), 4143–4151.
- 35 A. P. Lyubartsev and A. L. Rabinovich, Force Field Development for Lipid Membrane Simulations, *Biochim. Biophys. Acta Biomembr.*, 2016, **1858**(10), 2483–2497.
- 36 W. L. Jorgensen, J. Chandrasekhar, J. D. Madura, R. W. Impey and M. L. Klein, Comparison of Simple Potential Functions for Simulating Liquid Water, *J. Chem. Phys.*, 1983, **79**(2), 926–935.
- 37 E. J. Sorin and V. S. Pande, Exploring the helix-coil transition via all-atom equilibrium ensemble simulations, *Biophys. J.*, 2005, **88**(4), 2472–2493.
- 38 M. J. Abraham, T. Murtola, R. Schulz, S. Páll, J. C. Smith, B. Hess and E. Lindahl, GROMACS: High performance molecular simulations through multi-level parallelism from laptops to supercomputers, *SoftwareX*, 2015, **1–2**, 19–25.
- 39 D. Van der Spoel, E. Lindahl, B. Hess, G. Groenhof, A. E. Mark and H. J. C. Berendsen, GROMACS: Fast, flexible, and free, *J. Comput. Chem.*, 2005, **26**(16), 1701–1718.
- 40 H. J. C. Berendsen, D. Vandespoel and R. Vandrunen, Gromacs - a Message-Passing Parallel Molecular-Dynamics Implementation, *Comput. Phys. Commun.*, 1995, **91**(1–3), 43–56.
- 41 J. M. Wang, R. M. Wolf, J. W. Caldwell, P. A. Kollman and D. A. Case, Development and testing of a general amber force field, *J. Comput. Chem.*, 2004, **25**(9), 1157–1174.
- 42 C. I. Bayly, P. Cieplak, W. D. Cornell and P. A. Kollman, A Well-Behaved Electrostatic Potential Based Method Using Charge Restraints for Deriving Atomic Charges - the Resp Model, *J. Phys. Chem.*, 1993, **97**(40), 10269–10280.
- 43 J. M. Wang, W. Wang, P. A. Kollman and D. A. Case, Automatic atom type and bond type perception in molecular mechanical calculations, *J. Mol. Graph. Model.*, 2006, **25**(2), 247–260.
- 44 M. J. Frisch, G. W. Trucks, H. B. Schlegel, G. E. Scuseria, M. A. Robb, J. R. Cheeseman, G. Scalmani, V. Barone, G. A. Petersson, H. Nakatsuji, X. Li, M. Caricato, A. Marenich, J. Bloino, B. G. Janesko, R. Gomperts, B. Mennucci, H. P. Hratchian, J. V. Ortiz, A. F. Izmaylov, J. L. Sonnenberg, D. Williams-Young, F. Ding, F. Lipparini, F. Egidi, J. Goings, B. Peng, A. Petrone, T. Henderson, D. Ranasinghe, V. G. Zakrzewski, J. Gao, N. Rega, G. Zheng, W. Liang, M. Hada, M. Ehara, K. Toyota, R. Fukuda, J. Hasegawa, M. Ishida, T. Nakajima, Y. Honda, O. Kitao, H. Nakai, T. Vreven, K. Throssell, J. A. Montgomery Jr, J. E. Peralta, F. Ogliaro, M. Bearpark, J. J. Heyd, E. Brothers, K. N. Kudin, V. N. Staroverov, T. Keith, R. Kobayashi, J. Normand, K. Raghavachari, A. Rendell, J. C. Burant, S. S. Iyengar, J. Tomasi, M. Cossi, J. M. Millam, M. Klene, C. Adamo, R. Cammi, J. W. Ochterski, R. L. Martin, K. Morokuma, O. Farkas, J. B. Foresman, and D. J. Fox, *Gaussian 09, Revision D.01*, Gaussian, Inc., Wallingford CT, 2016.
- 45 A. W. Sousa da Silva and W. F. Vranken, ACPYPE - AnteChamber PYthon Parser interfacE, *BMC Res. Notes*, 2012, **5**, 367.
- 46 S. O. Yesylevskyy, L. V. Schafer, D. Sengupta and S. J. Marrink, Polarizable Water Model for the Coarse-Grained MARTINI Force Field, *PLoS Comput. Biol.*, 2010, **6**(6), e1000810.
- 47 D. H. de Jong, G. Singh, W. F. D. Bennett, C. Arnarez, T. A. Wassenaar, L. V. Schafer, X. Periole, D. P. Tieleman and S. J. Marrink, Improved Parameters for the Martini Coarse-Grained Protein Force Field, *J. Chem. Theory Comput.*, 2013, **9**(1), 687–697.
- 48 T. Bereau and K. Kremer, Automated Parametrization of the Coarse-Grained Martini Force Field for Small Organic Molecules, *J. Chem. Theory Comput.*, 2015, **11**(6), 2783–2791.
- 49 B. Hess, H. Bekker, H. J. C. Berendsen and J. G. E. M. Fraaije, LINCS: A linear constraint solver for molecular simulations, *J. Comput. Chem.*, 1997, **18**(12), 1463–1472.
- 50 S. Nose, A Molecular-Dynamics Method for Simulations in the Canonical Ensemble, *Mol. Phys.*, 1984, **52**(2), 255–268.
- 51 W. G. Hoover, Canonical Dynamics - Equilibrium Phase-Space Distributions, *Phys. Rev. A*, 1985, **31**(3), 1695–1697.
- 52 M. Parrinello and A. Rahman, Polymorphic Transitions in Single-Crystals - a New Molecular-Dynamics Method, *J. Appl. Phys.*, 1981, **52**(12), 7182–7190.
- 53 S. Nose and M. L. Klein, Constant Pressure Molecular-Dynamics for Molecular-Systems, *Mol. Phys.*, 1983, **50**(5), 1055–1076.
- 54 H. J. C. Berendsen, J. P. M. Postma, W. F. Vangunsteren, A. Dinola and J. R. Haak, Molecular-Dynamics with Coupling to an External Bath, *J. Chem. Phys.*, 1984, **81**(8), 3684–3690.

- 55 T. Darden, D. York and L. Pedersen, Particle Mesh Ewald - an $N \log(N)$ Method for Ewald Sums in Large Systems, *J. Chem. Phys.*, 1993, **98**(12), 10089–10092.
- 56 G. Bussi, D. Donadio and M. Parrinello, Canonical sampling through velocity rescaling, *J. Chem. Phys.*, 2007, **126**(1), 014101.
- 57 J. L. MacCallum, W. F. D. Bennett and D. P. Tieleman, Distribution of amino acids in a lipid bilayer from computer simulations, *Biophys. J.*, 2008, **94**(9), 3393–3404.
- 58 J. T. S. Coimbra, N. F. Bras, P. A. Fernandes, M. Rangel and M. J. Ramos, Membrane partition of bis-(3-hydroxy-4pyridinonato) zinc(ii) complexes revealed by molecular dynamics simulations, *RSC Adv.*, 2018, **8**(48), 27081–27090.
- 59 S. J. Marrink, A. H. de Vries and A. E. Mark, Coarse grained model for semiquantitative lipid simulations, *J. Phys. Chem. B*, 2004, **108**(2), 750–760.
- 60 J. L. MacCallum and D. P. Tieleman, Computer simulation of the distribution of hexane in a lipid bilayer: Spatially resolved free energy, entropy, and enthalpy profiles, *J. Am. Chem. Soc.*, 2006, **128**(1), 125–130.
- 61 J. P. M. Jambeck and A. P. Lyubartsev, Implicit inclusion of atomic polarization in modeling of partitioning between water and lipid bilayers, *Phys. Chem. Chem. Phys.*, 2013, **15**(13), 4677–4686.
- 62 C. Neale, W. F. D. Bennett, D. P. Tieleman and R. Pomes, Statistical Convergence of Equilibrium Properties in Simulations of Molecular Solutes Embedded in Lipid Bilayers, *J. Chem. Theory Comput.*, 2011, **7**(12), 4175–4188.
- 63 S. Kumar, D. Bouzida, R. H. Swendsen, P. A. Kollman and J. M. Rosenberg, The Weighted Histogram Analysis Method for Free-Energy Calculations on Biomolecules .1. The Method, *J. Comput. Chem.*, 1992, **13**(8), 1011–1021.
- 64 J. S. Hub, B. L. de Groot and D. van der Spoel, g_wham-A Free Weighted Histogram Analysis Implementation Including Robust Error and Autocorrelation Estimates, *J. Chem. Theory Comput.*, 2010, **6**(12), 3713–3720.
- 65 S. Jo, C. Chipot and B. Roux, Efficient Determination of Relative Entropy Using Combined Temperature and Hamiltonian Replica-Exchange Molecular Dynamics, *J. Chem. Theory Comput.*, 2015, **11**(5), 2234–2244.
- 66 J. M. Diamond and Y. Katz, Interpretation of Nonelectrolyte Partition-Coefficients between Dimyristoyl Lecithin and Water, *J. Membr. Biol.*, 1974, **17**(2), 121–154.
- 67 S. J. Marrink and H. J. C. Berendsen, Simulation of Water Transport through a Lipid-Membrane, *J. Phys. Chem.*, 1994, **98**(15), 4155–4168.
- 68 G. Hummer, Position-dependent diffusion coefficients and free energies from Bayesian analysis of equilibrium and replica molecular dynamics simulations, *New J. Phys.*, 2005, **7**, 34.
- 69 D. Bemporad, J. W. Essex and C. Luttmann, Permeation of small molecules through a lipid bilayer: A computer simulation study, *J. Phys. Chem. B*, 2004, **108**(15), 4875–4884.
- 70 M. Orsi, W. E. Sanderson and J. W. Essex, Permeability of Small Molecules through a Lipid Bilayer: A Multiscale Simulation Study, *J. Phys. Chem. B*, 2009, **113**(35), 12019–12029.
- 71 T. S. Carpenter, D. A. Kirshner, E. Y. Lau, S. E. Wong, J. P. Nilmeier and F. C. Lightstone, A Method to Predict Blood-Brain Barrier Permeability of Drug-Like Compounds Using Molecular Dynamics Simulations, *Biophys. J.*, 2014, **107**(3), 630–641.
- 72 C. T. Lee, J. Comer, C. Herndon, N. Leung, A. Pavlova, R. V. Swift, C. Tung, C. N. Rowley, R. E. Amaro, C. Chipot, Y. Wang and J. C. Gumbart, Simulation-Based Approaches for Determining Membrane Permeability of Small Compounds, *J. Chem. Inf. Model.*, 2016, **56**(4), 721–733.
- 73 W. Humphrey, A. Dalke and K. Schulten, VMD: Visual molecular dynamics, *J. Mol. Graph. Model.*, 1996, **14**(1), 33–38.