

Original Article



OPEN ACCESS

Received: Apr 9, 2018

Revised: Apr 12, 2018

Accepted: Apr 14, 2018

Correspondence to

Hyo-Soo Kim, MD, PhD

Department of Internal Medicine, Seoul National University Hospital, 101, Daehak-ro, Jongno-gu, Seoul 03080, Korea.  
E-mail: hyosoo@snu.ac.kr

Kiyuk Chang, MD, PhD

Seoul St. Mary's Hospital, The Catholic University of Korea School of Medicine, 222 Banpo-daero, Seocho-gu, Seoul, Korea.  
E-mail: kiyuk@catholic.ac.kr

\*First 3 authors equally contributed to this article.

Copyright © 2018. The Korean Society of Cardiology

This is an Open Access article distributed under the terms of the Creative Commons Attribution Non-Commercial License (<https://creativecommons.org/licenses/by-nc/4.0/>) which permits unrestricted noncommercial use, distribution, and reproduction in any medium, provided the original work is properly cited.

ORCID iDs

Cheol Woong Yu <https://orcid.org/0000-0002-5871-4562>  
Won-Jang Kim <https://orcid.org/0000-0002-9915-3722>  
Jung-Min Ahn <https://orcid.org/0000-0003-4031-391X>  
Hyungdon Kook <https://orcid.org/0000-0003-1440-0462>  
Se Hun Kang <https://orcid.org/0000-0001-5876-1791>

# Trends and Outcomes of Transcatheter Aortic Valve Implantation (TAVI) in Korea: the Results of the First Cohort of Korean TAVI Registry

Cheol Woong Yu , MD, PhD<sup>1,\*</sup>, Won-Jang Kim , MD, PhD<sup>2,\*</sup>, Jung-Min Ahn , MD<sup>3,\*</sup>, Hyungdon Kook , MD<sup>1</sup>, Se Hun Kang , MD<sup>2</sup>, Jung-Kyu Han , MD, PhD<sup>4</sup>, Young-Guk Ko , MD, PhD<sup>5</sup>, Seung-Hyuk Choi , MD, PhD<sup>6</sup>, Bon-Kwon Koo , MD, PhD<sup>4</sup>, Kiyuk Chang , MD, PhD<sup>7</sup>, and Hyo-Soo Kim , MD, PhD<sup>4</sup>

<sup>1</sup>Department of Cardiology, Korea University Anam Hospital, Department of Internal Medicine, Korea University College of Medicine, Seoul, Korea

<sup>2</sup>Department of Cardiology, CHA Bundang Medical Center, Department of Internal Medicine, CHA University School of Medicine, Seongnam, Korea

<sup>3</sup>Department of Cardiology, Asan Medical Center, Department of Internal Medicine, University of Ulsan College of Medicine, Seoul, Korea

<sup>4</sup>Department of Cardiology, Seoul National University Hospital, Department of Internal Medicine, Seoul National University College of Medicine, Seoul, Korea

<sup>5</sup>Department of Cardiology, Severance Hospital, Department of Internal Medicine, Yonsei University College of Medicine, Seoul, Korea

<sup>6</sup>Department of Cardiology, Samsung Medical Center, Department of Internal Medicine, Sungkyunkwan University School of Medicine, Seoul, Korea

<sup>7</sup>Department of Cardiology, Seoul St. Mary's Hospital, Department of Internal Medicine, The Catholic University of Korea School of Medicine, Seoul, Korea

## ABSTRACT

**Background and Objectives:** There has been no nation-wide data on the outcomes of transcatheter aortic valve implantation (TAVI) after commercialization of TAVI in Korea. We report clinical features and outcomes of the first cohort of TAVI performed from Jun 2015 to Jun 2017 in Korea.

**Methods:** The first cohort of Korean-TAVI (K-TAVI) registry includes 576 consecutive patients with severe symptomatic aortic stenosis who underwent TAVI from 17 Korean hospitals for 2 years.


**Results:** Most of TAVI procedures were performed for septuagenarians and octogenarians (90.8%) through transfemoral approach (98.3%). The rate of device success was 92.5% and permanent pacemaker was implanted in 5.6%. In successive years, incidences of paravalvular leakage (PVL) and major bleeding declined. Society of Thoracic Surgeons (STS) score was 5.2 (3.0 to 9.0) and 34.7% of patients had high surgical risk (STS  $\geq$ 8). One-year all-cause death occurred in 8.9% and was significantly lower in low to intermediate risk one than in high risk (5.4% vs. 15.5%,  $p < 0.001$ ). The independent predictors of 1-year mortality were age (hazard ratio [HR], 1.087; 95% confidence interval [CI], 1.036–1.141;  $p = 0.001$ ), moderate or severe PVL (HR, 4.631; 95% CI, 1.624–13.203;  $p = 0.004$ ) and end-stage renal disease (HR, 5.785; 95% CI, 2.717–12.316;  $p < 0.001$ ).

**Conclusions:** K-TAVI registry showed favorable 1-year outcomes with decreasing complication rate over time in real-world Korean patients. Two-thirds of patients were low to intermediate surgical risk and showed a significantly lower mortality than the high-risk patients, suggesting the promising future on the expanded indications of TAVI.

**Keywords:** Aortic valve stenosis; Transcatheter aortic valve replacement; Mortality; Koreans

Jung-Kyu Han 


<https://orcid.org/0000-0002-0016-0747>

Young-Guk Ko 

<https://orcid.org/0000-0001-6245-9544>

Seung-Hyuk Choi 


<https://orcid.org/0000-0001-6716-4884>

Bon-Kwon Koo 

<https://orcid.org/0000-0002-8188-3348>

Kiyuk Chang 

<https://orcid.org/0000-0003-3456-8705>

Hyo-Soo Kim 

<https://orcid.org/0000-0003-2977-6323>

#### Conflict of Interest

The authors have no financial conflicts of interest.

#### Author Contributions

Conceptualization: Choi SH, Koo BK, Kim HS; Data curation: Yu CW, Ahn JM, Kang SH, Chang K, Kim HS; Formal analysis: Han JK; Investigation: Ahn JM, Chang K; Methodology: Han JK, Choi SH; Project administration: Chang K; Supervision: Ko YG, Koo BK; Validation: Kim WJ, Ko YG; Writing - original draft: Kim WJ, Kook H, Kang SH; Writing - review & editing: Yu CW, Koo BK, Kim HS.

## INTRODUCTION

Transcatheter aortic valve implantation (TAVI) has become a valid option for patients with severe symptomatic aortic stenosis (AS) who are in inoperable condition or at intermediate or high-risk for conventional surgical aortic valve (AV) replacement.<sup>1-4)</sup> TAVI was first introduced into Korea in March 2010. Thereafter, the Korean Food and Drug Administration (KFDA) approved use of a device for TAVI, with Medtronic CoreValve in November 2011 and Edwards Sapien XT valve in April 2012 for the treatment of severe, symptomatic AS. The TAVI procedure is now being performed in 26 hospitals in Korea. Although several randomized controlled trials including Placement of Aortic Transcatheter Valves (PARTNER), PARTNER 2 and Surgical Replacement and Transcatheter (SURTAVI) trial demonstrated efficacy and safety of TAVI within a selected cohort of patients and hospitals, there have been no large-scale reports on the clinical outcomes of TAVI after marketing approval in Korea.<sup>1-4)</sup> The multicenter Korean-TAVI (K-TAVI) registry aims to investigate the outcomes of this emerging therapy in real-world clinical practice in Korea. Here we report the results of the first cohort of K-TAVI registry that is enrolled during June 2015 and June 2017, and analyzed the 1-year mortality and other clinical outcomes in overall and subgroups depending on the surgical risk.

## METHODS

### The first cohort of K-TAVI registry

The first cohort of K-TAVI registry is a retrospective registry that enrolls consecutive patients undergoing TAVI at 17 participating hospitals in Korea for 24 months during June 2015 and June 2017. The registry complies with the Declaration of Helsinki, and the relevant review boards at all participating hospitals approved the study protocol (approval number: SNU IRB 1706-150-863). All patients underwent TAVI were requested to be enrolled in this nation-wide K-TAVI registry.

The current study population consisted of 576 patients who had severe AS and underwent TAVI using the Sapien XT or Sapien 3 balloon-expandable valves (Edwards Lifesciences, Irvine, CA, USA), CoreValve or Evolut R self-expandable valve (Medtronic, Seoul, Korea), and Lotus valve (Boston Scientific, Marlborough, MA, USA) via transfemoral (TF) or transapical (TA) approach between Jun 1, 2015 and Jun 30, 2017. Participating centers have collected clinical information on patient demographics, comorbidities, functional status, hemodynamics, procedural details, and in-hospital, 30-day, and 1-year outcomes. Data quality checks were implemented at the steering committee meeting of K-TAVI registry, including data quality feedback reports and data range and consistency checks. If the patients did not visit the clinic, the attending physician contacted the patient and/or family members by telephone.

### Patient selection for TAVI

Consecutive patients who underwent TAVI for severe symptomatic AS during June 2015 and June 2017 were included in this study. Patient eligibility for a TAVI procedure was decided in each center by a multidisciplinary team composed of interventional cardiologists, imaging cardiologists, cardiothoracic surgeons, radiologists and anesthesiologists. General criteria for severe AS included a mean gradient  $\geq 40$  mmHg, jet velocity  $\geq 4.0$  m/s, effective orifice area  $\leq 1.0$  cm<sup>2</sup>, or effective orifice area index  $\leq 0.8$  cm<sup>2</sup>/m<sup>2</sup>. Valve annulus size was measured using both computed tomography (CT) and echocardiography. All patients underwent a

pre-procedural CT scan. Vascular access and pre-procedural balloon aortic valvuloplasty (BAV) were determined per site protocol. Access site was chosen prior to the procedure, in a step-wise manner based on anatomical considerations such as the angle of the aortic root, vessel diameter, and aortic calcification severity. Iliofemoral access was considered as the first option for all available patients. The local heart team of each institution evaluated each patient's preoperative data and selected patients for whom TAVI was deemed to be the best treatment option.

### TAVI procedure

The TAVI procedures were conducted in a hybrid operating room or conventional catheterization laboratory room under general anesthesia or conscious sedation, with transesophageal echocardiography or bed side transthoracic echocardiography. Premedication with aspirin (100 mg) and clopidogrel (75 mg) was administered unless particular contraindications exist. In a TF approach, a 14–20 Fr sheath was inserted into the femoral artery by puncture. In case of TA approach, a 16–20 Fr sheath was inserted in the left ventricular (LV) apex through a minimal left anterior thoracotomy. BAV was performed under rapid ventricular pacing when needed. Dual antiplatelet therapy (aspirin 100 mg and clopidogrel 75 mg) was usually administered for at least 6 months after the procedure.

### Definitions and outcome measures

Device success was defined as: 1) successful vascular access, delivery, and deployment of the device, and successful retrieval of the delivery system; 2) correct position of the device in the proper anatomical location (placement in the annulus with no impedance on device function); (3) intended performance of the prosthetic valve without moderate or severe paravalvular leakage (PVL) assessed by echocardiography; and 4) only 1 valve implanted in a proper anatomical location.<sup>5-7)</sup> Procedural success was defined as device success with the absence of an in-hospital major adverse cardiovascular and cerebrovascular event (MACCE). Procedure time was defined as time elapsed from the first vascular puncture or skin incision to final closure.

Primary outcome of the present study was death from any cause. The secondary outcomes were death from cardiac cause, death from non-cardiac cause, stroke, disabling stroke, major bleeding, and composite of death from any cause and disabling stroke. Death was considered cardiac unless an unequivocal non-cardiac cause could be established. Stroke, as indicated by neurological deficits, was confirmed by a neurologist on the basis of imaging modalities. A disabling stroke is defined as a stroke with symptoms that last for more than 24 hours, leaving permanent disability. Major bleeding was defined according to the Valve Academic Research Consortium (VARC)-2 bleeding classification.<sup>6)</sup> All clinical events were based on clinical diagnoses assigned by the treating physician and centrally adjudicated according to the source documentation by an independent group of clinicians.

### Statistical analysis

Categorical variables are presented as numbers and percentages and compared with the  $\chi^2$  test or Fisher's exact test. Continuous variables are presented as mean $\pm$ standard deviation and compared using Student's t-test or the Wilcoxon rank sum test. To assess whether there was any trend in the occurrence of complications by the year of operation, a  $\chi^2$  test for trend was performed. Time-to-event data analysis was performed with the Cox proportional hazards model. Kaplan-Meier survival curves were drawn to assess differences between groups for the time to an event. A stepwise option was used to determine independent

predictors of the outcome variables. All tests were 2-tailed at the p-value of less than 0.05 as significance. All statistical analyses were conducted using the R statistical computing environment ver. 3.3.2 (R Development Core Team, Vienna, Austria) and the Statistical Package for Social Sciences, version 22 (IBM Corporation, Armonk, NY, USA).

## RESULTS

### The first cohort of K-TAVI

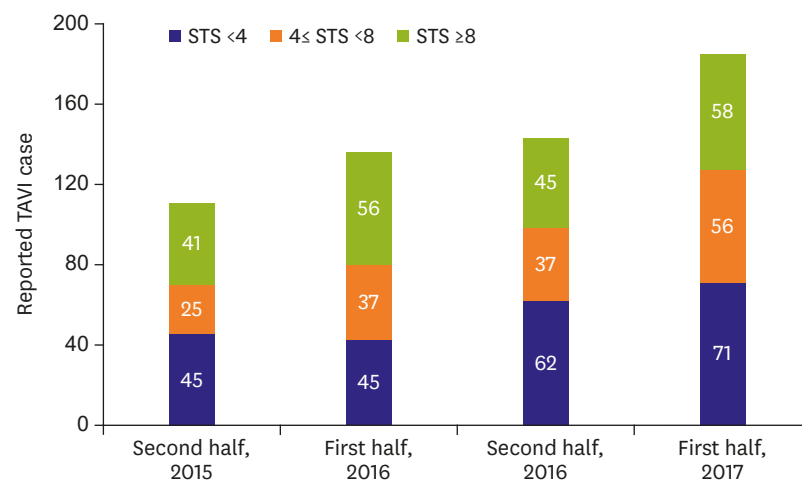
Total 576 TAVI cases were enrolled in the first cohort of K-TAVI registry and the case number increased throughout 2 years between June 2015 and June 2017 (**Figure 1**). Most of the TAVI procedures were done for septuagenarians and octogenarians (90.8%) and the median age was 79 years (**Table 1**). Median Society of Thoracic Surgeons (STS) predicted risk of mortality was 5.2 (3.0 to 9.0) and 144 patients (34.7%) had high surgical risk (STS  $\geq 8$ ). Mean effective orifice area of AV were  $0.69 \pm 0.18$  cm<sup>2</sup> with mean pressure gradient (PG) of  $54.0 \pm 19.2$  mmHg. AV morphology of bicuspid was 8.5% (n=49) (**Table 1**).

### Procedural characteristics

Most TAVI procedures were performed by the TF route (98.3%) and a total of 358 procedures (62.2%) were performed in hybrid rooms. The mean procedure time was  $76.3 \pm 33.4$  minutes and 83.5% of total procedures were performed under general anesthesia and (**Table 2**). Patients with high-risk associated with longer duration whole hospitalization and longer hospital stay after TAVI (**Table 2**). Device success for TAVI was achieved in 533 cases (92.5%). Seven cases required additional transcatheter heart valve implantation during the procedure. Two cases were converted to open-heart surgery due to aortic dissection and LV perforation.

### In-hospital and 30-day outcomes

Ninety-eight percent of patients (n=563) were discharged alive (**Table 3**). There was no difference in the incidence of in-hospital complications between the high surgical risk group and the others. There were 19 cases of VARC major bleeding (3.3%), 7 cases of stroke (1.2%), 5 cases of myocardial infarction (0.9%) and 4 cases of cardiac tamponade (0.7%). Permanent pacemaker (PPM) was implanted in 5.6%. Major bleeding was significantly decreased in the



**Figure 1.** Reported TAVI cases over time in Korea.

STS = Society of Thoracic Surgeons; TAVI = transcatheter aortic valve implantation.

**Table 1.** Baseline clinical and echocardiographic characteristics depending on the surgical risk profiles

Variables	All (n=576)	STS risk group		p value
		Low to intermediate (n=376)	High (n=200)	
Age (years)	79.0 (75.3–83.0)	78.0 (75.0–82.0)	80.0 (76.0–83.0)	0.085
Males	280 (48.6)	190 (50.5)	90 (45.0)	0.239
Hypertension	451 (78.3)	300 (79.8)	151 (75.5)	0.279
Diabetes mellitus	204 (35.4)	122 (32.4)	82 (41.0)	0.051
Chronic liver disease	22 (3.8)	18 (4.8)	4 (2.0)	0.152
Chronic lung disease	123 (21.4)	52 (13.8)	71 (35.5)	<0.001
Prior peripheral arterial disease	80 (13.9)	29 (7.7)	51 (25.5)	<0.001
Prior CABG	28 (4.9)	17 (4.75)	11 (5.5)	0.603
Prior Percutaneous coronary intervention	160 (27.8)	110 (29.3)	50 (25.0)	0.323
Prior stroke	88 (15.3)	45 (12.0)	43 (21.5)	0.004
NYHA classification				<0.001
1	127 (22.0)	118 (31.4)	9 (4.5)	
2	135 (23.4)	125 (33.2)	10 (5.0)	
3	204 (35.4)	117 (31.1)	87 (43.5)	
4	110 (19.1)	16 (4.3)	94 (47.0)	
Atrial fibrillation	70 (12.2)	36 (9.6)	34 (17.0)	0.014
Hemodialysis	37 (6.4)	8 (2.1)	29 (14.5)	<0.001
EuroSCORE	5.0 (2.0–15.0)	2.9 (1.5–5.6)	17.0 (12.9–22.6)	0.006
STS score	5.2 (3.0–9.0)	3.5 (2.4–5.0)	10.8 (9.0–15.4)	<0.001
Extent of CAD				0.006
1 vessel disease	106 (18.4)	68 (18.1)	38 (19.0)	
2 vessel disease	68 (11.8)	44 (11.7)	24 (12.0)	
3 vessel disease	59 (10.2)	27 (7.2)	32 (16.0)	
Presence of LM disease	37 (6.4)	16 (4.3)	21 (10.5)	0.010
Etiology				
Congenital	9 (1.6)	8 (2.1)	1 (0.5)	0.251
Degenerative	562 (97.7)	365 (97.1)	198 (99.0)	0.180
Rheumatic	4 (0.7)	3 (0.8)	1 (0.5)	1.000
Baseline echocardiographic data				
Mean PG (mmHg)	54.1±19.2	56.7±20.8	49.2±14.7	<0.001
Peak transaortic valve velocity (m/s)	4.9±3.2	4.8±0.9	5.0±5.3	0.673
AV area (cm <sup>2</sup> )	0.7±0.2	0.7±0.2	0.7±0.2	0.069
AV area index (cm <sup>2</sup> /m <sup>2</sup> )	0.5±0.4	0.5±0.4	0.5±0.2	0.766
LV ejection fraction	56.9±13.2	58.6±12.0	53.7±14.9	<0.001
AV annulus (mm)	21.8±3.2	21.8±3.5	21.7±2.4	0.689
Bicuspid AV	49 (8.5)	34 (9.0)	15 (7.5)	0.624
Aortic regurgitation > mild	92 (16.0)	54 (14.4)	38 (19.0)	0.148
Mitral regurgitation > mild	75 (13.0)	44 (11.7)	31 (15.5)	0.197

Data shown are median (IQR), mean±standard deviation, or number of patient (%).

AV = aortic valve; CABG = coronary artery bypass graft; CAD = coronary artery disease; EuroSCORE = European System for Cardiac Operative Risk Evaluation; IQR = interquartile range; LM = left main; LV = left ventricular; NYHA = New York Heart Association; PG = pressure gradient; STS, Society of Thoracic Surgeons.

second year compared with the first year (5.7% vs. 1.5%; p=0.006). Among 567 patients with available in-hospital echocardiographic follow-up data, moderate or severe PVL at discharge was observed in 6.0% with no significant differences between the first and the second year. Mean duration of hospitalization was 11.9±7.5 days with a trend of shortening over time (12.6±7.7 days vs. 11.4±7.2 days; p=0.060).

Among 532 patients who completed 30-day clinical follow-up, the incidences of all-cause death and the composite of all-cause death or disabling stroke were 2.6% and 3.5%, respectively (**Table 4**). The incidence of New York Heart Association (NYHA) class III or IV dyspnea 30-day after TAVI was only 0.6% (n=3). Among 399 patients with available 30-day echocardiographic follow-up data, moderate or severe PVL was observed in 6.0%. This incidence of moderate or severe PVL was significantly decreased in the second year (8.6% vs 3.7%; p=0.040).

**Table 2.** Procedural characteristics in subgroups depending on the surgical risk profiles

Variables	All (n=576)	STS risk group		p value
		Low to intermediate (n=376)	High (n=200)	
Approach				1.000
TF	566 (98.3)	369 (98.1)	197 (98.5)	
TA	10 (1.7)	7 (1.9)	3 (1.5)	
Anesthesia				<0.001
General	481 (83.5)	291 (77.4)	190 (95.0)	
Conscious sedation	95 (16.5)	85 (22.6)	10 (5.0)	
Valve type				<0.001
Sapien XT	119 (20.7)	78 (20.7)	41 (20.5)	
Sapien 3	178 (30.9)	135 (35.9)	43 (21.5)	
Lotus	41 (7.1)	34 (9.0)	7 (3.5)	
Core valve	71 (12.3)	44 (11.7)	27 (13.5)	
Evolut R	167 (29.0)	85 (22.6)	82 (41.0)	
Valve size (mm)				0.090
23	159 (27.6)	114 (30.3)	45 (22.5)	
25	17 (3.0)	13 (3.5)	4 (2.0)	
26	229 (39.8)	149 (39.6)	80 (40.0)	
27	11 (1.9)	8 (2.1)	3 (1.5)	
29	155 (26.9)	88 (23.4)	67 (33.5)	
31	5 (0.9)	4 (1.1)	1 (0.5)	
Room				0.028
Hybrid room	358 (62.2)	221 (58.8)	137 (68.5)	
Cath room	218 (37.8)	155 (41.2)	63 (31.5)	
Procedure success	574 (99.7)	376 (100.0)	198 (99.0)	0.231
Puncture to close time (min)	76.3±33.4	77.2±33.5	74.7±33.3	0.396
Anesthesia time (min)	127.2±39.3	130.0±39.5	121.9±38.5	0.019
Admission duration (days)	11.9±7.5	10.7±6.5	14.1±8.6	<0.001
TAVI to discharge duration (days)	7.5±6.1	6.9±5.2	8.7±7.3	0.002

Data shown are number of patient (%) or mean±standard deviation.

STS = Society of Thoracic Surgeons; TA = transapical; TAVI = transcatheter aortic valve implantation; TF = transfemoral.

### One-year outcomes depending on the surgical risk profiles

#### Overall patient

All-cause death occurred in 8.9% and cardiovascular death, in 3.3%. The cumulative incidence of the composite of all-cause death or disabling stroke was 10.8% (**Figure 2** and **Table 4**). There was no difference in the risk of all-cause death or disabling stroke at 1-year between bicuspid and tricuspid AV (**Supplementary Figure 1**). In 192 patients who completed transthoracic echocardiography follow-up to 1 year, only 9.9% of patients had moderate or severe PVL (**Figure 3A**). Echocardiographic parameters regarding mean PG and effective orifice area were well maintained up to 1 year (**Figure 3B**). Cox multivariate analysis showed age (hazard ratio [HR], 1.087; 95% confidence interval [CI], 1.036–1.141; p=0.001), moderate or severe PVL (HR, 4.631; 95% CI, 1.624–13.203; p=0.004) and ESRD (HR, 5.785; 95% CI, 2.717–12.316; p<0.001) were the main contributors for all-cause death at 1 year.

#### STS scores and outcomes

We analyzed the 1-year clinical outcomes depending on the surgical risk profiles, high-risk versus low to intermediate risk group (**Table 4** and **Figure 4**). Total mortality at 1 year was significantly better in low to intermediate surgical risk group than high-risk one (5.4% vs. 15.5%, p<0.001). Cardiovascular death was also numerically lower in low to intermediate risk group than high-risk one, which did not reach statistical significance. Mortality differences emerged early after the procedure and maintained in follow-up period up to 1 year.

**Table 3.** Procedural complications and in-hospital outcomes depending on the surgical risk profiles

Variables	All (n=576)	STS risk group		p value
		Low to intermediate (n=376)	High (n=200)	
All-cause death	13 (2.2)	7 (1.9)	8 (3.0)	0.125
Procedure related death	7 (1.2)	3 (0.8)	4 (2.0)	0.210
Non-procedure related death	6 (1.0)	4 (1.1)	2 (1.0)	0.943
Cardiac tamponade	4 (0.7)	2 (0.5)	2 (1.0)	0.907
Coronary obstruction	1 (0.2)	0 (0.0)	1 (0.5)	0.748
Periprocedural MI	4 (0.7)	3 (0.8)	1 (0.5)	0.682
Spontaneous MI	1 (0.2)	1 (0.3)	0 (0.0)	0.465
PPM insertion	32 (5.6)	26 (6.9)	6 (3.0)	0.051
PPM 1M	35 (6.1)	28 (7.4)	7 (3.5)	0.059
PPM 1Y	37 (6.4)	29 (7.7)	8 (4.0)	0.084
Any stroke	7 (1.2)	6 (1.6)	1 (0.5)	0.494
Disabling stroke	5 (0.9)	4 (1.1)	1 (0.5)	0.824
Major bleeding	19 (3.3)	12 (3.2)	7 (3.5)	0.843
Infective endocarditis	-	-	-	-
Valve thrombosis	-	-	-	-
Migration of valve	-	-	-	-
Injury of mitral valve	-	-	-	-
Aortic dissection	1 (0.2)	1 (0.3)	0 (0.0)	1.000
Rupture of aorta	1 (0.2)	1 (0.3)	0 (0.0)	1.000
Rupture of aortic annulus	-	-	-	-
Perforation of LV	2 (0.3)	1 (0.3)	1 (0.5)	1.000
Perforation of ventricular septum	-	-	-	-
LV apical pseudoaneurysm	-	-	-	-
Any complication of access site	39 (6.8)	26 (6.9)	13 (6.5)	0.850
Distal embolism (non-cerebral)	1 (0.2)	1 (0.3)	0 (0.0)	1.000
Bowel ischemia	-	-	-	-
Neurological Impairment	-	-	-	-
Limb ischemia	2 (0.3)	1 (0.3)	1 (0.5)	1.000

Data shown are number of patient (%) not otherwise specified.

LV = left ventricular; MI = myocardial infarction; PPM = permanent pacemaker; STS = Society of Thoracic Surgeons.

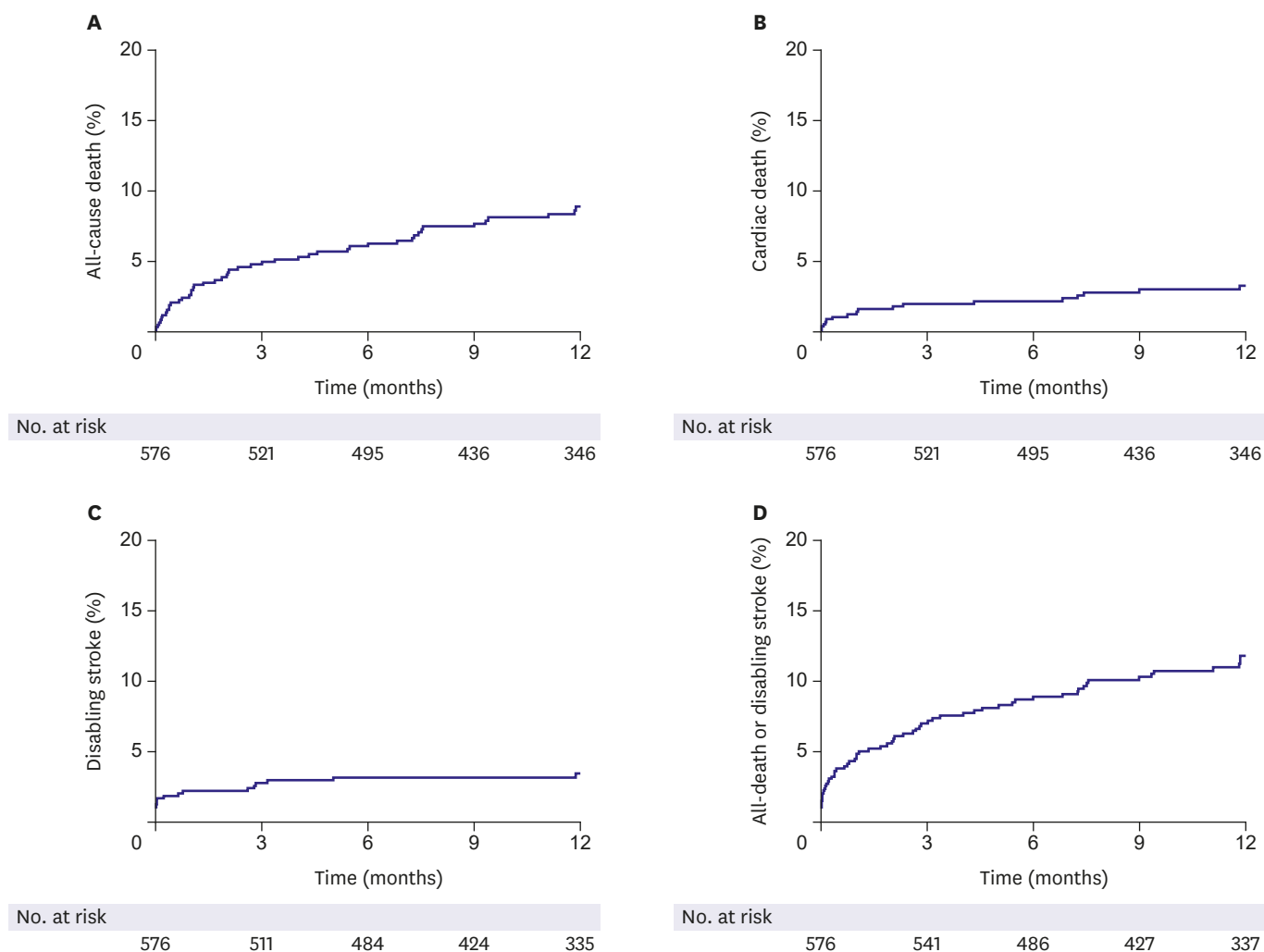
**Table 4.** Clinical outcomes at 1-month and 1-year depending on the surgical risk profiles

Variables	All patients (n=576)	STS risk group		p value*	HR (95% CI)	p value
		Low to intermediate (n=376)	High (n=200)			
<b>1-month follow-up</b>						
All-cause death	15 (2.6)	8 (2.1)	7 (3.5)	0.324	1.22 (0.43–3.48)	0.706
Cardiac death	7 (1.2)	3 (1.1)	4 (1.5)	0.211	1.06 (0.93–1.22)	0.510
Non-cardiac death	8 (1.4)	5 (1.1)	3 (2.1)	0.859	0.88 (0.20–3.82)	0.863
Stroke	9 (1.6)	8 (2.2)	1 (0.5)	0.137	0.20 (0.02–1.69)	0.140
Disabling stroke	7 (1.2)	6 (1.6)	1 (0.5)	0.256	0.24 (0.03–2.22)	0.210
Bleeding, major	18 (3.1)	12 (3.2)	6 (3.0)	0.906	0.79 (0.28–2.19)	0.648
All-cause death or disabling stroke	20 (3.5)	12 (3.2)	8 (4.0)	0.614	0.96 (0.38–2.43)	0.931
<b>1-year follow-up</b>						
All-cause death	47 (8.9)	19 (5.4)	28 (15.5)	<0.001	2.51 (1.37–4.63)	0.003
Cardiac death	17 (3.3)	9 (2.6)	8 (4.6)	0.249	1.12 (0.44–3.28)	0.727
Non-cardiac death	30 (5.8)	10 (2.9)	20 (11.5)	<0.001	3.94 (1.79–8.67)	0.001
Stroke	17 (3.2)	13 (3.6)	4 (2.5)	0.355	0.57 (0.18–1.80)	0.340
Disabling stroke	13 (2.2)	10 (2.8)	3 (2.0)	0.399	0.53 (0.14–2.01)	0.349
Bleeding, major	20 (3.6)	13 (3.5)	7 (3.8)	0.972	0.82 (0.31–2.18)	0.695
All-cause death or disabling stroke	57 (10.8)	26 (7.3)	31 (17.3)	0.001	2.12 (1.23–3.64)	0.007

Data shown are number of patient (%) not otherwise specified. Adjustment variables include age, sex, atrial fibrillation, bicuspid aortic valve, diabetes mellitus, hypertension, extent of coronary artery disease, and presence of left main disease.

CI = confidence interval; HR = hazard ratio; STS = Society of Thoracic Surgeons.

\*Events rates were estimated with the use of Kaplan-Meier estimates and p value was derived from the log-rank test.



**Figure 2.** Clinical outcomes in whole population of the first cohort of K-TAVI registry. K-TAVI = Korean-transcatheter aortic valve implantation.

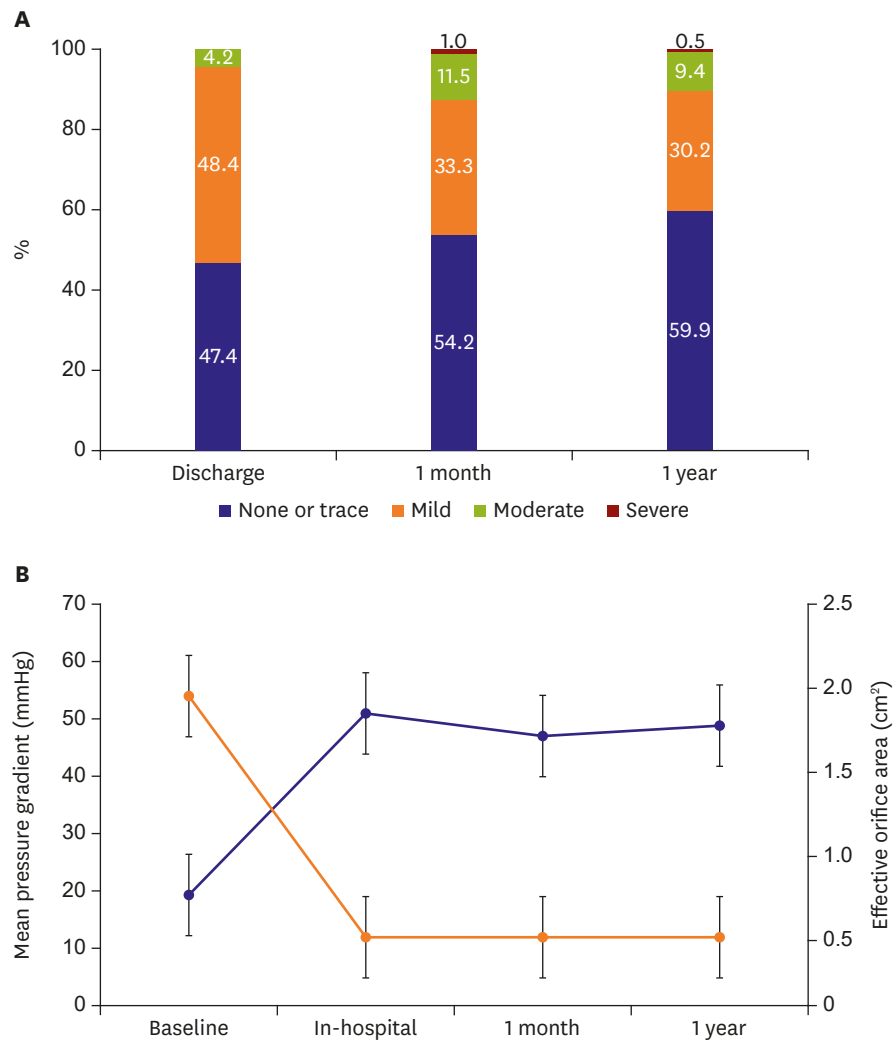
**The reasons for TAVI in patients with low STS score and age <75**

**Table 5** summarizes the causes of TAVI in patients with low surgical risk and age less than 75 years. Among total 60 patients, 32% have several comorbid conditions unfavorable to surgery while 68% refused surgery. Half of them received heart-team agreement while the other half did not.

**DISCUSSION**

The major findings of this study were as follows. In the first cohort of K-TAVI registry between June 2015 and June 2017, total number of TAVI was growing during study period. In-hospital, 1-month, and 1-year all-cause mortality were low, which was comparable or better than other studies. The 65% of TAVI procedures are performed in low to intermediate surgical risk population. The 1-year mortality was significantly better in the low to intermediate risk patients than the high-risk ones.

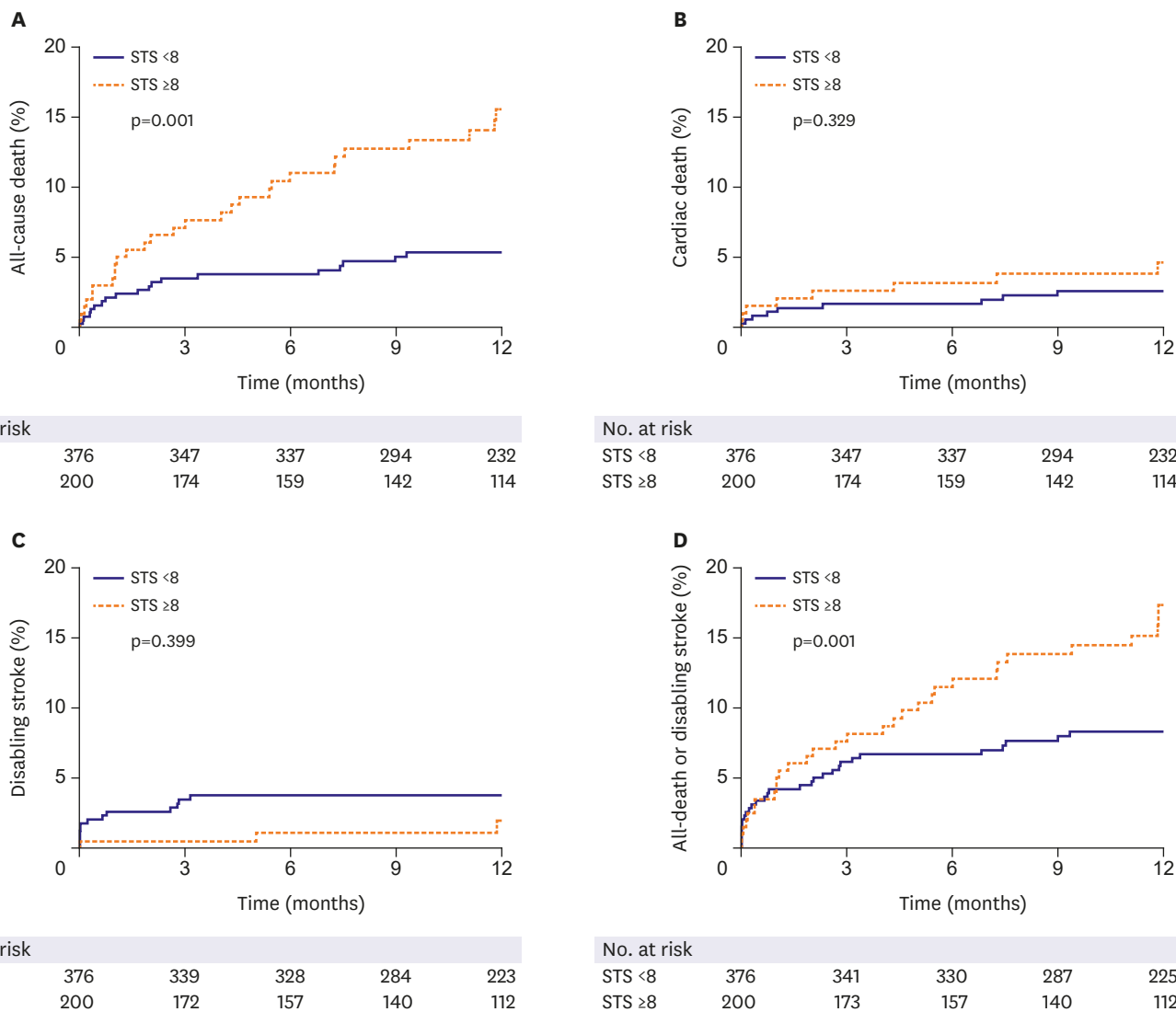




**Figure 3.** (A) Changes in the degree of PVL till 1-year in the patients who underwent echocardiographic examinations all 3-time points, at discharge, 1-month, and 1-year (n=192). (B) Changes in mean PG and effective orifice area over time (orange line = mean PG; blue line = effective orifice area). PG = pressure gradient; PVL = paravalvular leakage.

In this manuscript, we presented the result of the first cohort of K-TAVI program. In-hospital and 30-days all-cause death in our study were 2.3% and 2.6%, respectively. It was comparable with those in other reported registries.<sup>8-10)</sup> All-cause death and disabling stroke rate at 1-year was lower than those in other literatures.<sup>8-10)</sup>

In K-TAVI registry, the rate of peri-procedural complication was very low and VARC major bleeding was significantly decreased in the second year of study period. Introduction of a low-profile sheath and pre-procedural screening systems using multidetector CT can be the important contributing factors to these favorable outcomes. It is interesting to note that the rate of PPM implantation was only 5.6%. This may be due to the adequate device selection, meticulous procedure, high threshold for pacemaker implantation, relatively longer hospital stays, and low rate of pre-existing conduction disturbance. The association between post-procedural PVL and long-term prognosis has been widely reported. Our result



**Figure 4.** Kaplan-Meier curves of (A) all-cause death, (B) cardiac death, (C) disabling stroke, and (D) all-cause death or disabling stroke according to patient's STS risk score.

STS = Society of Thoracic Surgeons.

**Table 5.** The reasons for TAVI in patients with low STS score and age <75

Reasons	No. (%)
Heart team agreement	21 (35.0)
Refuse surgery	20 (33.3)
Inoperable condition	
Frailty	14 (23.3)
Severe COPD	3 (5.0)
Chest radiation	1 (1.7)
Prior CABG	1 (1.7)
Total	60

CABG = coronary artery bypass graft; COPD = chronic obstructive pulmonary disease; STS = Society of Thoracic Surgeons; TAVI = transcatheter aortic valve implantation.

also demonstrated that moderate or severe PVL was associated with 1-year mortality. The incidence of moderate or severe PVL decreased in the second year compared with the first which might be due to the development of devices with dedicated sealing skirts and improved valve selection process and procedural skill. Therefore, this issue will be of less clinical importance in the future.

The present analysis revealed significantly higher 1-year mortality rate in the high-risk patients than in the low to intermediate surgical risk ones. This phenomenon might be related with the higher prevalence of underlying co-morbidities such as high rates of hemodialysis which has been shown to be a very strong outcome predictor after TAVI.<sup>11)</sup> Previous studies that assessed the causes of death after TAVI have shown some variability of results; however, all agree that beyond the early period after TAVI, non-cardiac death account for a large proportion of all deaths.<sup>12),13)</sup> These non-cardiac deaths may be an important reason for the poor long-term survival of high-risk patients. Recent guidelines or expert opinions have expanded the indication of TAVI in patients with intermediate surgical risk or with age over 75. In the first cohort of K-TAVI registry, about 10% of patients were younger than 75 and had low-risk. The most frequent reason why non-high-risk patients underwent TAVI in K-TAVI registry was patients' refusal of surgery or comorbid conditions that were not well acknowledged in STS scoring system, such as chronic lung disease, frailty, or liver cirrhosis. In case of patients' refusal, the half got surgeons' agreement while the other half did not.

This study was a retrospective registry with a relatively small sample size. The follow-up duration was also short. However, as the K-TAVI registry is the ongoing program sponsored by Korean Society of Interventional Cardiology, the results of next cohorts will be presented in the future.

The first cohort of K-TAVI registry enrolled between June 2015 and June 2017 revealed that the 1-year outcomes of TAVI were favorable in real-world Korean patients demonstrating the very low rate of procedural complications and comparable mortality to other clinical studies. Two-thirds of patients were low to intermediate surgical risk group and demonstrated a significantly lower mortality at 1 year than the high-risk group.

## ACKNOWLEDGEMENTS

**List of K-TAVI investigators:** Asan Medical Center, University of Ulsan College of Medicine (Seung-Jung Park, MD, PhD), Seoul St. Mary's Hospital, The Catholic University of Korea College of Medicine (Kiyuk Chang, MD, PhD), Severance Hospital, Yonsei University College of Medicine (Myeong-Ki Hong, MD, PhD), Seoul National University Hospital, Seoul National University College of Medicine (Hyo-Soo Kim, MD, PhD), Samsung Medical Center, Sungkyunkwan University School of Medicine (Hyeon-Cheol Gwon, MD, PhD), Korea University Anam Hospital, Korea University College of Medicine (Cheol Woong Yu, MD, PhD), Chonnam National University Hospital, Chonnam National University College of Medicine (Ju Han Kim, MD, PhD), Sejong General Hospital (Young-Jin Choi, MD, PhD), Yeungnam University Medical Center, Yeungnam University College of Medicine (Jong-Sun Park, MD, PhD), Pusan National University Yangsan Hospital (June Hong Kim, MD, PhD), Chungnam National University Hospital (Jae-Hwan Lee, MD, PhD), Seoul National University Bundang Hospital (In Ho Choi, MD, PhD), CHA Bundang Medical Center, CHA University School of Medicine (Won-Jang Kim, MD, PhD), Yonsei University Gangnam

Severance Hospital (Young Won Yun, MD, PhD), Ajou University Hospital (Byeong-Joo Choi, MD, PhD), Gachon University Gil Medical center (Tae-Hoon Ahn, MD, PhD), and Pusan National University Hospital (Han-Cheol Lee, MD, PhD).

## SUPPLEMENTARY MATERIALS

### Supplementary Figure 1

Kaplan-Meier estimates of cumulative events for composite of disabling stroke or all-cause death for patients with bicuspid valve and with tricuspid valve.

[Click here to view](#)

### Supplementary Figure 2

Change in NYHA classification over time for 226 patients who completed clinical follow-up to 1 year.

[Click here to view](#)

## REFERENCES

1. Leon MB, Smith CR, Mack M, et al. Transcatheter aortic-valve implantation for aortic stenosis in patients who cannot undergo surgery. *N Engl J Med* 2010;363:1597-607.  
[PUBMED](#) | [CROSSREF](#)
2. Smith CR, Leon MB, Mack MJ, et al. Transcatheter versus surgical aortic-valve replacement in high-risk patients. *N Engl J Med* 2011;364:2187-98.  
[PUBMED](#) | [CROSSREF](#)
3. Leon MB, Smith CR, Mack MJ, et al. Transcatheter or surgical aortic-valve replacement in intermediate-risk patients. *N Engl J Med* 2016;374:1609-20.  
[PUBMED](#) | [CROSSREF](#)
4. Reardon MJ, Van Mieghem NM, Popma JJ, et al. Surgical or transcatheter aortic-valve replacement in intermediate-risk patients. *N Engl J Med* 2017;376:1321-31.  
[PUBMED](#) | [CROSSREF](#)
5. Grube E, Schuler G, Buellesfeld L, et al. Percutaneous aortic valve replacement for severe aortic stenosis in high-risk patients using the second- and current third-generation self-expanding CoreValve prosthesis: device success and 30-day clinical outcome. *J Am Coll Cardiol* 2007;50:69-76.  
[PUBMED](#) | [CROSSREF](#)
6. Kappetein AP, Head SJ, Genereux P, et al. Updated standardized endpoint definitions for transcatheter aortic valve implantation: the Valve Academic Research Consortium-2 consensus document. *Eur Heart J* 2012;33:2403-18.  
[PUBMED](#) | [CROSSREF](#)
7. Sawa Y, Saito S, Kobayashi J, et al. First clinical trial of a self-expandable transcatheter heart valve in Japan in patients with symptomatic severe aortic stenosis. *Circ J* 2014;78:1083-90.  
[PUBMED](#) | [CROSSREF](#)
8. Mack MJ, Brennan JM, Brindis R, et al. Outcomes following transcatheter aortic valve replacement in the United States. *JAMA* 2013;310:2069-77.  
[PUBMED](#) | [CROSSREF](#)
9. Ludman PE, Moat N, de Belder MA, et al. Transcatheter aortic valve implantation in the United Kingdom: temporal trends, predictors of outcome, and 6-year follow-up: a report from the UK Transcatheter Aortic Valve Implantation (TAVI) Registry, 2007 to 2012. *Circulation* 2015;131:1181-90.  
[PUBMED](#) | [CROSSREF](#)
10. Takimoto S, Saito N, Minakata K, et al. Favorable clinical outcomes of transcatheter aortic valve implantation in Japanese patients- first report from the Post-Approval K-TAVI Registry. *Circ J* 2016;81:103-9.  
[PUBMED](#) | [CROSSREF](#)

11. Sinning JM, Ghanem A, Steinhauser H, et al. Renal function as predictor of mortality in patients after percutaneous transcatheter aortic valve implantation. *JACC Cardiovasc Interv* 2010;3:1141-9.  
[PUBMED](#) | [CROSSREF](#)
12. Van Mieghem NM, van der Boon RM, Nuis RJ, et al. Cause of death after transcatheter aortic valve implantation. *Catheter Cardiovasc Interv* 2014;83:E277-82.  
[PUBMED](#) | [CROSSREF](#)
13. Barbash IM, Finkelstein A, Barsheshet A, et al. Outcomes of patients at estimated low, intermediate, and high risk undergoing transcatheter aortic valve implantation for aortic stenosis. *Am J Cardiol* 2015;116:1916-22.  
[PUBMED](#) | [CROSSREF](#)