


RESEARCH ARTICLE

Open Access



The use of data science to analyse physiology of oxygen delivery in the extracorporeal circulation

Marceli Lukaszewski^{1*} , Rafal Lukaszewski², Kinga Kosiorowska³ and Marek Jasinski³

Abstract

Background: Recent scientific reports have brought into light a new concept of goal-directed perfusion (GDP) that aims to recreate physiological conditions in which the risk of end-organ malperfusion is minimized. The aim of our study was to analyse patients' interim physiology while on cardiopulmonary bypass based on the haemodynamic and tissue oxygen delivery measurements. We also aimed to create a universal formula that may help in further implementation of the GDP concept.

Methods: We retrospectively analysed patients operated on at the Wroclaw University Hospital between June 2017 and December 2018. Since our observations provided an extensive amount of data, including the patients' demographics, surgery details and the perfusion-related data, the Data Science methodology was applied.

Results: A total of 272 (mean age 62.5 ± 12.4 , 74% male) cardiac surgery patients were included in the study. To study the relationship between haemodynamic and tissue oxygen parameters, the data for three different values of DO_{2i} (280 ml/min/m², 330 ml/min/m² and 380 ml/min/m²), were evaluated. Each set of those lines showed a descending function of CI in Hb concentration for the set DO_{2i} .

Conclusions: Modern calculation tools make it possible to create a common data platform from a very large database. Using that methodology we created models of haemodynamic compounds describing tissue oxygen delivery. The obtained unique patterns may both allow the adaptation of the flow in relation to the patient's unique morphology that changes in time and contribute to wider and safer implementation of perfusion strategy which has been tailored to every patient's individual needs.

Keywords: Extracorporeal circulation, Goal-directed perfusion, Data science, Oxygen delivery, Pump flow, Haemodynamics

Background

The emergence of extracorporeal circulation (ECC) has been a milestone in the history of heart surgery. Throughout the years, the ECC procedure of commencing the heart-lung machine and switching off the heart together with a pulmonary circulation from the bloodstream has been the gold standard of the majority of cardiac surgery procedures. Nonetheless, the ECC procedure is associated with significant postoperative complications, occurring either de novo or as an

exacerbation of existing organ dysfunctions. It may also influence the coagulation system and trigger the vasoplegic syndrome [1]. Recently, much attention has been devoted to the detrimental effects of inadequate organ perfusion on cardiopulmonary bypass (CPB) [2]. The current widely accepted CPB management strategies are based on simplified schemes including regulation of core perfusion parameters, thus not restoring the patient's unique physiological circulation. The pump flow rate usually remains constant and is set on 2.2–2.4 l/min/m² [3]. The perfusion pressure that optimizes transmembrane transport is maintained above 50 mmHg, which is the lowest value of cerebral blood flow autoregulation [4]. The problem of ECC management is aggravated by

* Correspondence: marceliluk@gmail.com

¹Department of Anaesthesiology and Intensive Therapy, Wroclaw Medical University, Borowska 213, 50-556 Wroclaw, Poland

Full list of author information is available at the end of the article



the lack of EBM-based standards covering basic haemodynamic parameters, i.e., pump flow rate and perfusion pressure, as well as haemodilution range or indications for the vasoconstrictors use. This has led clinicians to adapt different ranges of defined core parameters for guiding the perfusion throughout cardiac surgical units worldwide [1, 2, 4].

A haemodynamic patient – heart-lung machine model aims to study the disparity between the patient's unique haemodynamics during the ECC procedure and CPB settings. Currently applicable perfusion protocols are based solely on physiological haemodynamic parameters, such as CI or perfusion pressure. Consequently, they apply the same average parameters to each patient, which does not seem adequate since the initiation of the heart-lung machine changes the physiological haemodynamic conditions. Therefore, the implementation of non-invasive real-time monitoring of oxygen transport and haemodynamics has become an intrinsic factor for the newly introduced concept, the so-called Goal-Directed Perfusion (GDP). The aim of this concept is to restore the physiological conditions of cell and tissue respiration during the ECC by optimizing both tissue oxygen delivery and extraction. The evidence proving the effectiveness of this concept is very limited, with only a handful of articles demonstrating favourable clinical impact on the reduction of CPB-related complications, such as kidney or CNS injury. The oxygen supply threshold (DO_2), below which the deterioration of end-organ function can be observed, was set above 272 ml/m²/min [5, 6]. Additionally, new parameters determining adequate oxygen transport, such as percentage oxygen saturation of venous blood (SvO_2), oxygen consumption (VO_2), ratio of oxygen consumed to oxygen delivered (O_2ER) and oxygen delivery indexed to body surface area to carbon dioxide production indexed to body surface area ratio (DO_{2i}/VCO_{2i}) were adopted. Yet the DO_{2i}/VCO_{2i} ratio often remains blurred due to frequent CO_2 insufflations into the operating field for the anti-embolic purposes.

$$DO_2 = \text{pump flow} \times [(H_g \times \text{Sat} \times 1,36) + (0.003 \times PaO_2)]$$

DO_2 is directly proportional to the oxygen content in the blood and, therefore, the pump flow rate enables the adjustment of these two parameters to obtain satisfactory DO_2 value. Perfusion pressure depends on the cardiac output and the vascular tone, whereas on CPB it depends mainly on the flow rate and blood viscosity. Systemic vascular resistance, as usually practiced, can be modified through vasoactive agents [7].

The aim of our observational study was to find physiological relationships between the patient's haemodynamics and the heart-lung machine settings that would then allow to introduce the perfusion tailored to the

individual patient's needs and to spread the concept around the world.

Methods

We performed a retrospective analysis of 272 consecutive cardiac surgery patients operated on at the Wroclaw University Hospital between June 2017 and December 2018. Each procedure was conducted with the use of the S5 Heart-Lung Machine (*LivaNova PLC, London, UK*) equipped with the System M real-time non-invasive monitoring (*Spectrum Medical, Gloucester, UK*). All the procedures were carried out according to the ward standards in normothermia. The patients' agreement for treatment and data collection was approved by the local Bioethics Committee.

Data collection and statistical analysis

The dataset of 272 cases, which amounts to over 351 thousand rows of data, was collected from both electronic medical records and the VIPER data management system, where all the perfusion-related data were collected. Demographic data were expressed as mean values with either a standard deviation (SD) for continuous variable data or as a percentage of the total for categorical data (Table 1). We compared: patient baseline characteristics with operative details obtained from electronic medical records, results of sensors in-line monitoring and pump flow rate measurements. An enormous amount of data and the diversity of the data pattern determined the use of the Data Science calculation tools [8].

Table 1 Demographic characteristics of the study group

Number of patients (n)	272
Age (years), mean ± SD	62.5 ± 12.4
Gender male, n (%)	203 (73.6)
Body surface area (m ²), mean ± SD	1.95 ± 0.21
Body mass index, mean ± SD	28.38 ± 4.78
Risk factors, n (%)	
Coronary artery disease	190 (68.8)
Hypertension	188 (68.1)
Diabetes mellitus	79 (28.6)
Hypercholesterolemia	59 (21.4)
COPD	12 (4.3)
ESRD	3 (1.1)
Type of surgery, n (%)	
CABG	133 (48.9)
Other single procedure	95 (34.9)
Double procedure	43 (15.8)
Triple procedure	1 (0.4)

CABG Coronary bypass grafting, COPD Chronic obstructive pulmonary disease, ESRD End stage renal disease

According to Data Science nomenclature, our estimates are described as: structured data (e.g., laboratory results), semi-structured data (e.g., sensor data) and unstructured data (e.g., patient notes) [9–11]. Additionally, using the Data Science capabilities we looked for adequate pump flow rates for which relevant GDP conditions, such as $DO_2 > 280 \text{ ml/m}^2/\text{min}$, $SvO_2 > 68\%$ and $MAP > 60 \text{ mmHg}$, were met. Our toolset was based in on Anaconda Distribution (Anaconda Inc., <https://www.anaconda.com>), Python 3.6 (Python Software Foundation, <https://www.python.org>) and Jupyter Notebook (Jupyter Project, <https://jupyter.org>). Data cleaning and analysis was performed using Pandas (Python Data Analysis Library), whereas visualization was done with Matplotlib (Matplotlib Development Team, <https://matplotlib.org>) and Seaborn libraries (<https://seaborn.pydata.org>). All those applications use Berkeley Software Distribution (BSD) type of license, which means they are free for distribution, modification, and private and commercial use and do not require any liabilities in return. All the data, both structured and unstructured, were firstly gathered in a Microsoft Excel (Microsoft office package, <https://products.office.com/pl-pl/excel>) format with each patient bookmarked with a separate spreadsheet. From there it was imported into a Jupyter Notebook, where, using Python Pandas module, it was merged into one big dataset that used the time for its main index. It was then scrapped from duplications and empty rows, cleaned from unnecessary information and missing information was interpolated from nearby points. Those operations were necessary to create a data platform that was subsequently investigated by adding to it different set of constraints. Finally, visual analysis was made with the use of 2D and 3D plots.

Results

A total of 272 (mean age 62.5 ± 12.4 , 74% male) cardiac surgery patients were included in this study. Nearly half of them (49.5%) underwent isolated CABG procedure, whereas 34.4% underwent another single procedure. A double procedure was conducted on 15.6% of patients. One patient underwent a triple procedure. Demographic findings of the study population are presented in Table 1. The formation of heterogeneous information derived from patient baseline characteristics along with operative details and the results of in-line real-time CPB monitoring and pump flow rate measurements created a common platform for coherent multi-modal data processing. As the methodology of Data Science enables the analysis of various types of data, the rejection of erroneous readings and the use of regression methods, we employed it to identify and analyse diagnostic and therapeutic features for the ECC. It was ensured that the database was cleared from any duplications and empty rows. The first visual analysis

of the gathered data shows haemoglobin concentration and cardiac index (CI) value on x and y-axis respectively (Fig. 1). Oxygen delivery (DO_{2i}) was illustrated in colour, where darker shades correspond with lower values. The image reveals a predictable pattern in which the DO_{2i} level goes up with both Hb and CI. It also reveals that most of the measurements were taken for CI set between 1.3–2.8 L/min/m² and Hb values between 9 and 12 g/dL. The database contained a moderate amount of DO_{2i} values lower than 280 mL/min/m². In the majority of cases they resulted from short-term blood flow reductions from the CPB related to cardiac surgical procedures. Continuing data analysis, we carefully selected data for which the minimum value of DO_{2i} was at least 280 mL/min/m² and SvO_2 was above 68%. Additionally, the impact of outlier points that go out of the pattern at random due to various measurement uncertainties was reduced by shortening the database by those rows where CI values had less than 1 hundred corresponding Hb measurements. Those new constraints left a strong visible pattern in the data (Fig. 2). The arch-shaped cut on the lower part of the scattered data in Fig. 2 corresponds to the relationship between CI and Hb for our limit DO_2 value. To study the relation, we extracted the data for three different values (280 mL/min/m², 330 mL/min/m² and 380 mL/min/m²) of oxygen delivery (DO_{2i}), which were subsequently described with weighted linear regression of second order (Fig. 3). Each set of those lines shows a descending function of CI in Hb concentration for the set DO_{2i} .

Discussion

Recently accumulating evidence has suggested that the trends in current perfusion practice need to be improved as we experience tremendous technological improvement every day. The discussed new GDP concept provides an ideal opportunity to apply treatment which is tailored to the individual patient's needs and, therefore, aims to diminish the risk of complications throughout the entire surgical procedure. Consequently, the emerging concept jeopardizes the current widely accepted CPB strategies of organ perfusion based on a constant pump flow rate and the ubiquitous indicators of tissue perfusion, such as lactate concentration and urine output, with lactates representing effective tissue perfusion and metabolism balance, and urine output being a vital indicator of renal perfusion. The main goal of GDP is to optimize tissue oxygen delivery and extraction. Interestingly, adequate perfusion represented by the flow rate is a crucial component of DO_2 .

In current clinical practice, the haemodynamic values used by perfusionists are based solely on observational studies designed on the basis of the physiology of a healthy individual. For instance, the pump flow rate is the equivalent of the average calculated cardiac index

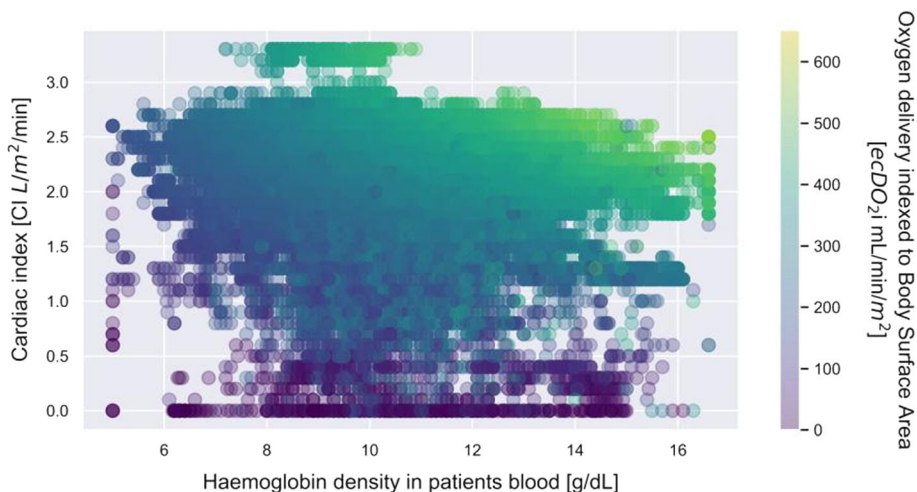


Fig. 1 A full set of the cardiac index data during extracorporeal circulation (ECC), in the function of haemoglobin density and tissue oxygen delivery for patients with mixed venous oxygen saturation (SvO₂) above 68% and mean arterial pressure (MAP) above 60 mmHg. Oxygen delivery (DO_{2i}) has been illustrated with colour, where the darker shades correspond with lower values

(CI). However, one should raise a question whether the haemodynamic parameters observed in a healthy individual can be adapted during the ECC when the heart and pulmonary circulation are switched off from the bloodstream and the tangible pump flow rate reflects the unique physiology of cardiac output only to a small extent. The advancement in System M in-line non-invasive monitoring provides an opportunity to conduct real-time observation of flow rates, both venous and arterial saturation, haemoglobin level, the extent of carbon dioxide production and also calculate all exponents of oxygen transport. The aim of our study was to find the

relationships between the set pump flow rates and the ultimate GDP conditions, such as DO₂ > 280 mL/min/m², SvO₂ > 68% and the minimum MAP of 60 mmHg. Statistical analysis was performed with Data Science calculation tool, which is more frequently introduced as codes that can assess with high probability if, for instance, a skin mole will turn into cancer or classify genes responsible for leukaemia [12, 13]. In our study, we strived to present how the application of this technology can help to easily visualise the correlation between factors that would be incalculable elsewhere. Using the described tools, the pattern in the data that corresponds to the relationship

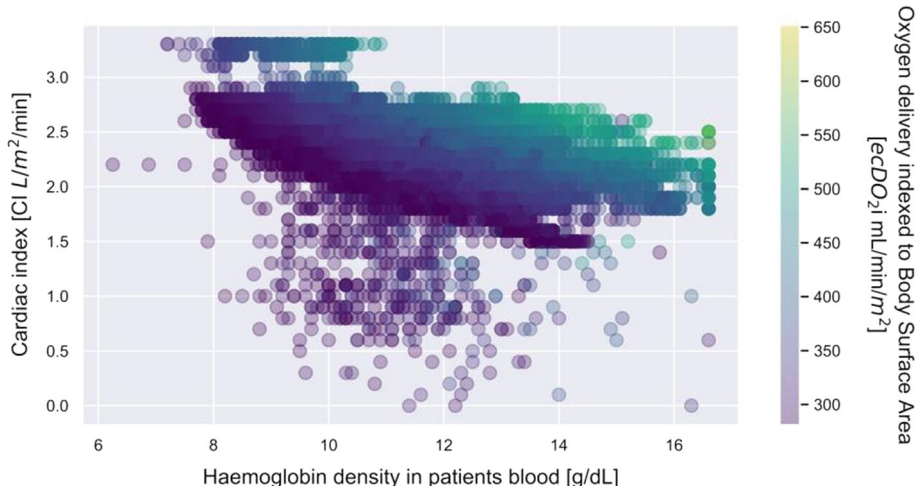


Fig. 2 A set of the cardiac index data during extracorporeal circulation (ECC) for patients with mixed venous oxygen saturation (SvO₂) above 68%, mean arterial pressure (MAP) above 60 mmHg and tissue oxygen delivery (DO₂) greater than 280 mL/min/m², in the function of haemoglobin density and tissue oxygen delivery

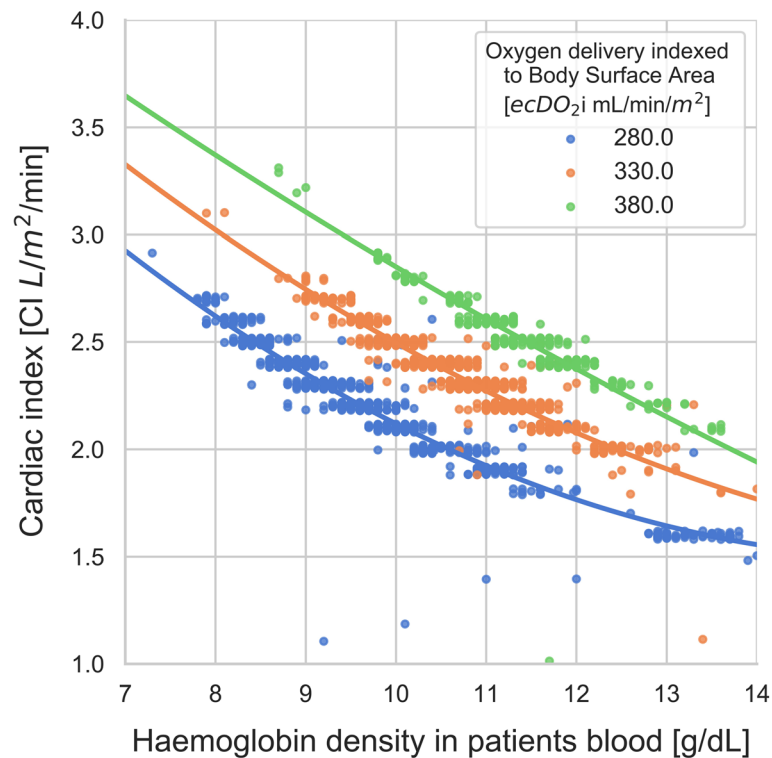


Fig. 3 The linear regression curves for three selected oxygen delivery (DO_2) levels showing the relationship between cardiac index (CI) and haemoglobin density

between CI and Hb for the same DO_{2i} value was derived (Fig. 3). Hence, to ensure a certain level of DO_2 at $MAP > 60$ mmHg, haemoglobin value necessitates the adjustment of the appropriate pump flow rate. The graph illustrates that at Hg of 10 g%, the initial pump flow rate within the study population was set on 2.2 l/min/m^2 , while at Hg level of 8 g% the pump flow rate should be sustained on approximately 2.6 l/min/m^2 . The described relationship is part of the GDP concept, however, the perfusion pressure above 60 mmHg is an additional parameter that was analysed.

Conclusions

The presented observations reflect substantial mechanisms in the newly created haemodynamic patient – heart-lung machine model. Nevertheless, the depicted concept requires further observation. Appropriate models dedicated to higher perfusion pressures and different DO_2 values should be evaluated as it would be extremely useful in managing patients concurrently affected by primary cerebral and visceral hypoperfusion in particular. The revealed relationship outlines basic values for the initial settings of the heart-lung machine to optimize perfusion during the ECC. Moreover, perfusion strategy should be individualized to match the patient's unique physiology that changes over time.

Abbreviations

CABG: Coronary artery bypass grafting; CI: Cardiac index; CPB: Cardiopulmonary bypass; DO_2 : Oxygen delivery; DO_{2i} : Oxygen delivery indexed to Body Surface Area; EBM: Evidence-based medicine; ec: extracorporeal; ECC: Extracorporeal circulation; GDP: Goal-directed perfusion; Hb: Haemoglobin; MAP: Mean arterial pressure; O_2ER : Ratio of oxygen consumed to oxygen delivered; SVO_2 : Mixed venous oxygen saturation; VCO_2 : Carbon dioxide production; VO_2 : Oxygen consumption

Acknowledgements

None.

Author's contribution

ML: Concept/design, Data analysis/interpretation, Data collection. RL: Concept/design, Data analysis/interpretation, Drafting article. KK: Concept/design, Data collection, Drafting article. MJ: Critical revision of article, Approval of article. All authors read and approved the final manuscript.

Funding

There was no funding received for this manuscript.

Availability of data and materials

The datasets used and/or analysed during the current study are available from the corresponding author on reasonable request.

Ethics approval and consent to participate

Not applicable.

Consent for publication

N/A.

Competing interests

The authors declare that they have no competing interests.

Author details

¹Department of Anaesthesiology and Intensive Therapy, Wrocław Medical University, Borowska 213, 50-556 Wrocław, Poland. ²Accenture Sp z o.o, Warsaw, Poland. ³Department and Clinic of Cardiac Surgery, Wrocław Medical University, Wrocław, Poland.

Received: 8 July 2019 Accepted: 5 December 2019

Published online: 13 December 2019

References

1. Murphy GS, Hessel EA, Groom RC. Optimal perfusion during cardiopulmonary bypass: an evidence-based approach. *Anesth Analg*. 2009;108(5):1394–417.
2. Shaefi S, Mittel A, Klick J, Evans A, Ivascu NS, Gutsche J, Augoustides JGT. Vasoplegia after cardiovascular procedures—pathophysiology and targeted therapy. *J Cardiothorac Vasc Anesth*. 2018;32(2):1013–22.
3. Clowes GHA, Neville WE, Sabga G, Shiboh Y. The relationship of oxygen consumption, perfusion rate, and temperature to acidosis associated with cardiopulmonary bypass. *Surgery*. 1958;44:220–3.
4. Barry AE, Chaney MA, London MJ. Anesthetic management during cardiopulmonary bypass: a systematic review. *Anesth Analg*. 2015;120(4):749–69.
5. Ranucci M, Johnson I, Willcox T, Baker RA, Boer C, Baumann A, et al. Goal-directed perfusion to reduce acute kidney injury: a randomized trial. *J Thorac Cardiovasc Surg*. 2018;156(5):1918–27.
6. Awad H, Essandoh M. Goal-directed oxygen delivery during cardiopulmonary bypass: can this perfusion strategy improve biochemical and clinical neurologic outcomes? *J Cardiothorac Vasc Anesth*. 2018;32(6):2493–4.
7. Groom RC. Is it time for goal-directed therapy in perfusion. *J Extra Corpor Technol*. 2017;49(2):P8–P12.
8. Gill J, Prasad V. Improving observational studies in the era of big data. *Lancet*. 2018;392(10149):716–7.
9. Kong HJ. Managing unstructured big data in healthcare system. *Heal Inf Res*. 2019;25(1):1–2.
10. Orphanidou C. A review of big data applications of physiological signal data. *Biophys Rev*. 2019;11:83.
11. Chung NC, Ping P, Mirza B, Wang W, Wang J, Choi H. Machine learning and integrative analysis of biomedical big data. *Genes*. 2019;10:87.
12. Walker BN, et al. Dermoscopy diagnosis of cancerous lesions utilizing dual deep learning algorithms via visual and audio (sonification) outputs: laboratory and prospective observational studies. *EBioMedicine*. 2019;40:176–83.
13. Castillo D, et al. Leukemia multiclass assessment and classification from microarray and RNA-seq technologies integration at gene expression level. *PLoS One*. 2019;14(2):e0212127.

Publisher's Note

Springer Nature remains neutral with regard to jurisdictional claims in published maps and institutional affiliations.

Ready to submit your research? Choose BMC and benefit from:

- fast, convenient online submission
- thorough peer review by experienced researchers in your field
- rapid publication on acceptance
- support for research data, including large and complex data types
- gold Open Access which fosters wider collaboration and increased citations
- maximum visibility for your research: over 100M website views per year

At BMC, research is always in progress.

Learn more biomedcentral.com/submissions

