

Crude Extracts of Marine-derived and Soil Fungi of the Genus *Neosartorya* Exhibit Selective Anticancer Activity by Inducing Cell Death in Colon, Breast and Skin Cancer Cell Lines

Alice Abreu Ramos^{1*}, Bruno Castro-Carvalho^{1,2*}, Maria Prata-Sena^{1,2}, Tida Dethoup³, Suradet Buttachon^{1,4}, Anake Kijjoa^{1,4}, Eduardo Rocha^{1,2}

¹Interdisciplinary Center for Marine and Environmental Research, University of Porto, ²Department of Microscopy, Institute of Biomedical Sciences Abel Salazar, University of Porto, Porto, Portugal, ³Department of Plant Pathology, Faculty of Agriculture, Kasetsart University, Bangkok, Thailand, ⁴Department of Chemistry, Institute of Biomedical Sciences Abel Salazar, University of Porto, Porto, Portugal

ABSTRACT

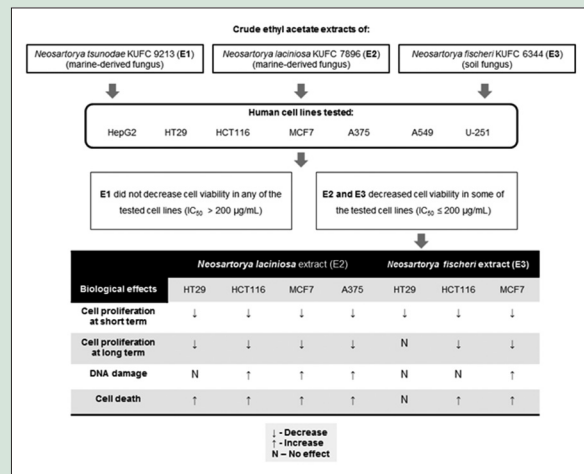
Background: The crude ethyl acetate extracts of marine-derived fungi *Neosartorya tsunodae* KUFC 9213 (E1) and *N. laciniosa* KUFC 7896 (E2), and soil fungus *N. fischeri* KUFC 6344 (E3) were evaluated for their *in vitro* anticancer activities on a panel of seven human cancer cell lines. **Materials and Methods:** The 3-(4,5-dimethylthiazol-2-yl)-2,5-diphenyltetrazolium bromide assay was performed, after 48 h treatments with different concentrations of extracts, to determine their concentration of the extract or Dox that inhibits cell viability by 50% for each cell line. The effects of the crude extracts on DNA damage, clonogenic potential and their ability to induce cell death were also assessed. **Results:** E1 was found to be void of anti-proliferative effects. E2 was shown to decrease the clonogenic potential in human colorectal carcinoma cell line (HCT116), human malignant melanoma cell line (A375), human breast adenocarcinoma cell line (MCF7), and human caucasian colon adenocarcinoma Grade II cell line (HT29) cells, whereas E3 showed such effect only in HCT116 and MCF7 cells. Both extracts were found to increase DNA damage in some cell lines. E2 was found to induce cell death in HT29, HCT116, MCF7, and A375 cells while extract E3 increased cell death in MCF7 and HCT116 cell lines. **Conclusion:** The results reveal that E2 and E3 possess anticancer activities in human colon carcinoma, breast adenocarcinoma, and melanoma cells, validating the interest for an identification of molecular targets involved in the anticancer activity.

Key words: Anticancer activity, anti-proliferative activity, cancer cell lines, cell death, marine-derived fungi, *Neosartorya*

SUMMARY

- The crude ethyl acetate extract of *N. tsunodae* (E1) did not decrease cell viability in any of the tested cell lines
- The crude ethyl acetate extracts of *N. laciniosa* (E2) and *N. fischeri* (E3) decreased cell proliferation in some human cancer cell lines tested at both short- and long-term
- *N. laciniosa* (E2) induced a significant increase in the number of cell death, in part, due to the induction of DNA damage
- *N. fischeri* (E3) induce cell death but in some cell lines without induction of DNA damage detected by comet assay
- Crude ethyl extracts of *N. laciniosa* (E2) and *N. fischeri* (E3) exert an anticancer activity in human colon carcinoma, breast adenocarcinoma, and malignant melanoma cells.

Abbreviations Used: A375: Human malignant melanoma cell line; A549: Human non-small lung cancer cell line; DAPI: 4,6-diamidino-2-phenylindole; DMEM: Dulbecco's Modified Eagle Medium; DMSO: Dimethylsulfoxide; Dox: Doxorubicin; E1: *Neosartorya tsunodae* KUFC 9213; E2: *Neosartorya*



laciniosa KUFC 7896; E3: *Neosartorya fischeri* KUFC 6344; FBS: Fetal bovine serum; HCT116: Human colorectal carcinoma cell line; HEPES: (N-[2-hydroxyethyl] piperazine-N'-[2-ethane-sulfonic acid]); HepG2: Human hepatocellular carcinoma cell line; HT29: Human caucasian colon adenocarcinoma Grade II cell line; IC₅₀: Concentration of the extract or Dox that inhibits cell viability by 50%; MCF7: Human breast adenocarcinoma cell line; MEM: Minimum Essential Medium Eagle; MTT: 3-(4,5-dimethylthiazol-2-yl)-2,5-diphenyltetrazolium bromide; NCI-H460: Human non-small lung cancer cell line; PBS: Phosphate buffered saline; PE: Plating efficiency; RPMI: Roswell park memorial institute medium; SF: Surviving fraction; U-251: Human malignant glioblastoma cell line.

*These authors contributed equally to this work.

Correspondence:

Prof. Eduardo Rocha,
Department Microscopy, Institute of Biomedical Sciences Abel Salazar, University of Porto,
Street Jorge Viterbo Ferreira, 228, 4050-313
Porto, Portugal.
E-mail: erocha@icbas.up.pt
DOI : 10.4103/0974-8490.171105

Access this article online

Website: www.phcogres.com

Quick Response Code:



INTRODUCTION

Cancer is one of the main causes of death in developed countries and is gaining lead in developing ones.^[1] Considering the increasing frequency of neoplastic lesions, resistance acquired to conventional commonly used therapeutic drugs,^[2] cross-resistance to structurally dissimilar and unused anticancer drugs,^[3] and undesirable side effects of current chemotherapeutic drugs, new bioactive substances are needed.

This is an open access article distributed under the terms of the Creative Commons Attribution-NonCommercial-ShareAlike 3.0 License, which allows others to remix, tweak, and build upon the work non-commercially, as long as the author is credited and the new creations are licensed under the identical terms.

For reprints contact: reprints@medknow.com

Cite this article as: Ramos AA, Castro-Carvalho B, Prata-Sena M, Dethoup T, Buttachon S, Kijjoa A, *et al.* Crude extracts of marine-derived and soil fungi of the genus *Neosartorya* exhibit selective anticancer activity by inducing cell death in colon, breast and skin cancer cell lines. Phcog Res 2016;8:8-15.

The marine environment is a prosperous and underexploited resource of bioactive natural compounds.^[4] Bioprospection of the oceans has brought to light numerous novel compounds with potential therapeutic applicability, for e.g., demonstrating bioactive profiles with anticancer, anti-inflammatory, anti-viral, anti-angiogenic, anti-oxidant, and anti-adhesion activity.^[5-7] Until now, only a few marine-derived drugs have been approved for anticancer clinical use, although many are currently in clinical trial phases.^[8,9]

Marine-derived fungi can be considered as key relevance in the quest for biopharmaceuticals since they produce metabolites with interesting biological activities such as cytotoxic and cytostatic effects on human cancer cell lines.^[10] Moreover, marine-derived fungi are also a source of compounds that may overcome the frequent limitation of production shortfall, since they have the potential to be easily produced under laboratorial/industrial conditions, and are, therefore, good candidates for compound extraction under mass-production. Additionally, compounds isolated from marine-derived fungi have been found to target different pathways involved in proliferation and cell death mechanisms and other hallmarks of cancer.^[11]

Fungi of the genus *Neosartorya*, which are sexual forms of the *Aspergillus* species, especially of the *Fumigati* section, have recently been revealed as potential sources for potential anticancer compounds.^[12-15] With this rationale, the aim of this study was to assess the *in vitro* anticancer activity of the crude ethyl acetate extract of three species of *Neosartorya*, that is, the marine-derived *N. tsunodae* KUFC 9213 (E1) and *N. laciniosa* KUFC 7896 (E2), and soil *N. fischeri* KUFC 6344 (E3) on a panel of seven human cancer cell lines: Colon carcinoma (HT29 and HCT116), liver hepatocellular carcinoma (HepG2), breast adenocarcinoma (MCF7), malignant melanoma (A375), lung carcinoma (A549), and glioblastoma (U-251) cells. The chemical composition of the crude extracts E1, E2, and E3 has been previously analyzed by members of our research team.^[13]

MATERIALS AND METHODS

Reagents

Doxorubicin (Dox), Dulbecco's Modified Eagle Medium (DMEM), Minimum Essential Medium Eagle (MEM), Roswell Park Memorial Institute medium (RPMI), penicillin/streptomycin, trypsin solution, 4,6-diamidino-2-phenylindole (DAPI) and 3-(4,5-dimethylthiazol-2-yl)-2,5-diphenyltetrazolium bromide (MTT) were purchased from Sigma-Aldrich (St. Louis, MO, USA). Dimethylsulfoxide (DMSO) was purchased from AMRESCO LLC (Solon, SO, USA). Fetal bovine serum (FBS) was purchased from Biochrom KG (Berlin, Germany). All other reagents and chemicals used were of analytical grade.

Fungal material

N. tsunodae (KUFC 9213) was isolated from the marine sponge *Aka coralliphaga*, *N. fischeri* (KUFC 6344) was isolated from coastal forest soil and *N. laciniosa* (KUFC 7896) was isolated from a diseased coral (ulcerative white spot *P. lutea*), as reported by Eamvijarn *et al.*^[13]

Preparation of the fungal crude ethyl acetate extracts

Crude ethyl acetate extracts of the fungi were obtained as previously described by Eamvijarn *et al.*^[13] Briefly, the marine-derived fungi were cultured in Petri dishes with malt extract agar (for the strains KUFC 9213 and KUFC 7896) or with potato dextrose agar (for the strain KUFC 6344) for 1-week. Then Erlenmeyer flasks containing rice and water were autoclaved, inoculated with the respective fungal mycelia, and incubated

for 30 days at 28°C. The mouldy rice was macerated in ethyl acetate, filtered, and then the two layers were separated by a separating funnel, and the ethyl acetate solution was concentrated at a reduced pressure.

Cell lines

HT29, HCT116 cells were kindly provided by Prof. Carmen Jerónimo, from CI-IPO, Porto. HepG2 cells were kindly provided by Prof. Rosário Martins, from ESTSP and CIIMAR, Porto. A375, A549, U-251, and MCF7 cell lines were obtained from the European Collection of Cell Cultures. Cells were maintained as monolayer cultures in DMEM (HT29, A375 and A549) in MEM (HepG2, U-251 and MCF7) or RPMI for HCT116 cell line. Media were supplemented with 10% FBS, 1% antibiotic solution (100 U/ml penicillin and 100 µg/ml streptomycin), 10 mM N-[2-hydroxyethyl] piperazine-N'-[2-ethane-sulfonic acid] and 0.1 mM sodium pyruvate. Cells were maintained in a humidified incubator with 5% CO₂ at 37°C. Cells were trypsinized when approaching confluence. For experiments, the test extracts and Dox were dissolved in DMSO (final concentration <0.5%) and controls received DMSO only.

Evaluation of cell viability/proliferation by 3-(4,5-dimethylthiazol-2-yl)-2,5-diphenyltetrazolium bromide assay

Effects of the fungal crude extracts on cell viability/proliferation were evaluated by the MTT reduction assay.^[16] Briefly, cells were seeded at a density of 0.8×10^4 to 1×10^4 cell/well in 96-well plates and incubated for 24 h in 5% CO₂ at 37°C. After adhesion, cells were exposed to fresh medium containing varying concentrations of the fungal extracts (0.1, 1, 10, 100, and 200 µg/mL) or Dox (0.001, 0.01, 0.1, 1, and 10 µM), used as a positive control. After 48 h of treatment, MTT solution at a final concentration of 0.5 mg/mL was added and incubated for 2 h at 37°C. Ethanol-DMSO (1:1) (v/v) solution was used to dissolve the formazan crystals, and the absorbance (A) was measured at 570 nm in a microplate reader (Multiskan EX, Labsystems, USA). The number of viable cells in each well was estimated by the cell's capacity to reduce MTT and produce formazan crystals.^[16] The concentration of the extracts or Dox that inhibits cell viability by 50% (IC₅₀) was calculated by analysing dose-response data with GraphPad Prism version 5.0 software (GraphPad Software, La Jolla, CA, USA).

To evaluate the effects of the fungal crude extracts on cell proliferation, absorbance at the beginning of incubation ($t = 0$ h) was subtracted from all experimental conditions, including the negative control (untreated cells) at the end of treatment ($t = 48$ h). Cell proliferation and cell inhibition percentages were calculated according to the following equations:

$$\text{Cell proliferation (\%)} = \left(\frac{[A_{\text{sample}} - A_{t=0\text{h}}] / (A_{t=48\text{h}} - A_{t=0\text{h}})} \right) \times 100$$

where A is the absorbance.

$$\text{Cell inhibition (\%)} = 100 - \text{Cell proliferation}$$

Negative values for cell proliferation imply direct cytotoxic effects of the extracts; positive values (between 0 and 100%) imply inhibition of cell proliferation. The results correspond to the mean of at least six independent experiments, each carried out in duplicate. Only the fungal crude extracts that presented an IC₅₀ lower than the arbitrary cut-off of 200 µg/mL and without direct cytotoxic effects were used in the following assays.

Evaluation of cytostatic effect by clonogenic cell survival assay

The long-term cytostatic effect was evaluated by the clonogenic cell survival assay. Cells were seeded in 24-well plates with a density of 1×10^6 cells/mL, and after adhesion, cells were incubated with the fungal

crude extracts and Dox at IC_{50} concentrations. After 48 h of treatment, cells were harvested by trypsinization and survival cells were seeded in 12-well plates at a density of 200 cells/well. Cells were incubated with a drug-free medium for 10 days under normal culture conditions. After the incubation period, cells were washed with Phosphate Buffered Saline (PBS) and fixed *in situ* with 4% paraformaldehyde (in PBS) for 15 min at room temperature. Then, cells were stained with 0.05% crystal violet for 30 min at room temperature, washed with distilled water, and the plates were left to dry. In each treatment condition, colonies made of more than ~50 cells were quantified by a stereomicroscope (Leica, ZOOM 2000), and the plating efficiency (PE) and surviving fraction (SF) were calculated according to the following equations:^[17,18]

PE = number of colonies counted/number of seeded cells

SF = (PE of treated cells/PE of control) × 100.

Evaluation of genotoxic effect by single cell electrophoresis assay (comet assay)

The effect of the fungal crude extracts on DNA damage was evaluated by the single cell electrophoresis assay or comet assay.^[19,20] Briefly, cells were seeded at a density of 0.1×10^6 cells/ml in 24-well plates. After adhesion, cells were treated with the respective IC_{50} concentrations of the fungal extracts and Dox for 4, 24 and 48 h at 37°C. By the end of each treatment, 2×10^4 cells were collected per sample, mixed with a 0.5% (w/v) low melting agarose, and mounted on slides previously coated with a 1% (w/v) normal melting agarose. Up to this point, all samples were maintained at 4°C to minimize further DNA repair. Slides were placed in lysis solution (2.5 M NaCl, 100 mM Na₂ EDTA, 10 mM Tris, pH 10) plus 1% (v/v) triton X-100 for 1 h at 4°C, and then incubated in an alkaline electrophoresis buffer (300 mM NaOH, 1 mM Na₂ EDTA, pH 13) for 40 min at 4°C to allow the DNA to unwind. After a 20 min electrophoresis at 21 V, slides were washed, fixed with 100% ethanol, and dried at room temperature. Afterward, slides were stained with DAPI solution (1 µg/ml), observed under a fluorescence microscope (Olympus IX 71) and the CometScore® software (Version 1.5., TriTek Corporation, Sumerduck, VA, USA.) was used to calculate the parameter of percentage of tail intensity.

Evaluation of cell death induction by nuclear condensation assay

Effects of the fungal crude extracts on the induction of cell death were evaluated by the nuclear condensation assay. Cells were seeded at a density of 1×10^6 cells/mL on 24-well plates, and incubated for 24 h at 37°C. After adhesion, cells were treated with the respective IC_{50} concentrations of the fungal crude extracts and Dox and incubated for 48 h. In each well, adherent and detached cells were collected, washed, centrifuged, and fixed with 4% (w/v) paraformaldehyde in PBS for 15 min at 37°C. Samples were stored at 4°C. Prior to analysis, cells were mounted on polylysine-treated slides using a Cell Spin Cytospin centrifuge and left to air dry. Ensuing, the slides were thrice washed with PBS for 5 min each and incubated for 10 min with DAPI (1 µg/mL) for nuclei staining. The cells with condensed nuclei were observed using a fluorescence microscope (Olympus IX 71) and at least 300 cells were scored per sample. The percentage of cells with condensed nuclei was determined from the ratio between cells with nuclear condensation and the total number of cells × 100.

Statistical analysis

Results are expressed as mean ± standard deviation from at least 3 independent experiments. Statistical tests were performed by one-way ANOVA, followed by the *post-hoc* Newman-Keuls multiple comparison

test or Dunnett's test by the Student's *t*-test, using the software GraphPad Prism version 5.0 (GraphPad Software, La Jolla, CA, USA). $P \leq 0.05$ were considered statistically significant.

RESULTS AND DISCUSSION

As a first step to ground further research, the fungal crude extracts were screened for anti-proliferative activity against HepG2, HT29, HCT116, A375, A549, MCF7, and U251 cancer cell lines. After 48 h of cell exposure to a range of concentrations of the fungal crude extracts and Dox (positive control), effects on cell viability/proliferation were measured by MTT reduction assay. Impacts of extract and Dox on cell viability were summarized in Table 1, by IC_{50} values that correspond to the concentration that was able to cause a 50% inhibition of viability. At the tested concentrations, E1 did not decrease cell viability in any of the tested cell lines (in all cases the IC_{50} was higher than 200 µg/mL). Although Eamvijarn *et al.*^[13] have recently reported the growth inhibitory activity of sartorypyrone B, isolated from the crude ethyl acetate extract of *N. tsunodae*, on breast adenocarcinoma (MCF7), melanoma (A375-C5), and non-small cell lung (NCI-H460) cancer cell lines, the crude ethyl acetate of this fungus (E1) did not exhibit any anti-proliferative effect on any cell lines tested in this experiment.

The extract of *N. laciniosa* (E2) was found to inhibit four of the human cancer cell lines tested, namely in HT29, HCT116, A375, and MCF7 cells. The IC_{50} values for this extract were 139, 141, 179, and 200 µg/mL for HCT116, A375, MCF7, and HT29, respectively, showing that HCT116 and A375 cells were the most sensitive to E2.

The extract of *N. fischeri* (E3) also presented relevant inhibitory activities ($IC_{50} \leq 200$ µg/mL) on HCT116 and HT29 (IC_{50} values of 189 µg/mL and 196 µg/mL, respectively), and MCF7 (IC_{50} of 189 µg/mL), although less active than E2. Dox was used as a positive control and was shown to decrease cell viability in all the tested cell lines in a dose-dependent manner, with the IC_{50} values ranging from 0.11 µM to 1.55 µM. The U251, HT29, and A549 cell lines were found to be the most resistant having the IC_{50} values of 1.55, 0.87, and 0.54 µM, respectively.

The effects of the fungal crude extracts on cell proliferation have been also inferred from the MTT results. As shown in Figure 1a, E2 significantly inhibited cell proliferation in HT29, HCT116, A375, and MCF7 in a dose-dependent manner. E3 was also found to decrease cell proliferation, in a dose-dependent manner, in HT29, HCT116, and MCF7 cells [Figure 1b].

Table 1: IC_{50} values^a of E1, E2 and E3 in seven cell lines determined by MTT assay

Cancer cell lines	IC_{50} (95% confidence interval)			
	E1 (µg/mL)	E2 (µg/mL)	E3 (µg/mL)	Doxorubicin (µM)
HepG2	>200	>200	>200	0.11 (0.07-0.17)
HT29	>200	200 (177-226)	196 (167-229)	0.87 (0.54-1.39)
HCT116	>200	139 (120-164)	189 (166-214)	0.13 (0.09-0.19)
U251	>200	>200	>200	1.55 (0.70-2.50)
A549	>200	>200	>200	0.54 (0.30-0.94)
A375	>200	141 (120-166)	>200	0.12 (0.09-0.16)
MCF7	>200	179 (154-205)	189 (156-225)	0.37 (0.27-0.50)

^a IC_{50} values are the mean at least 6 independent experiment each in duplicate. Doxorubicin was used as a positive control. E1: *Neosartorya tsunodae* KUFC 9213; E2: *Neosartorya laciniosa* KUFC 7896; E3: *Neosartorya fischeri* KUFC 6344; MTT: 3-(4,5-dimethylthiazol-2-yl)-2,5-diphenyltetrazoliumbromide; IC_{50} : Concentration of the extract or doxorubicin that inhibits cell viability by 50%; HepG2: Human hepatocellular carcinoma cell line; HT29: Human caucasian colon adenocarcinoma grade II cell line; HCT116: Human colorectal carcinoma cell line; A549: Human non-small lung cancer cell line; U251: Malignant glioblastoma human cell line; A375: Human malignant melanoma cell line; MCF7: Human breast adenocarcinoma cell line

Both extracts were found to induce a cytotoxic effect at concentrations higher than 200 µg/mL [Figure 1]. The percentage of inhibition of cell proliferation of E2 and E3 at the same concentration (e.g., 100 µg/ml) is summarized in Table 2. In HCT116 and MCF7 cells, E2 inhibited cell proliferation by 45% and 69%, while E3 inhibited proliferation by 26% and 39%, respectively. On the contrary, HT29 cells showed the lowest rates of inhibition of cell proliferation for both extracts (E2 - 24% and E3 - 19%).

Different IC₅₀ values and percentages of cell inhibition of the cell lines tested, suggest that the fungal crude extracts may act by different pathways, depending on the genetic characteristics of each cell line. This hypothesis is supported by the fact that the drug resistance demonstrated by several types of cancers, namely colorectal cancer, is often related with p53 mutations.^[21] In this work, both extracts (E2 and E3) were found to be more active (lower IC₅₀ values) in cell lines with wild-type p53, however, they also showed an anti-proliferative effect in the HT29 cell line (p53

mutant) indicating that both extracts may act by p53-dependent and/or independent mechanisms.

Interestingly, E2 was found to be more active than E3 in the most sensitive cell lines (HCT116, A375 and MCF7), which could be due to the difference in the chemical constituents of the two extracts. Recently, Eamvijarn *et al.*^[13] reported isolation of the meroditerpenes aszonapyrone A (4b) and sartorypyrone A (3), aszonalenin (1a), acetylazonalenin (1b), 13-oxofumitremorgin B (2), 1-formyl-5-hydroxyaszonalenin (1c), and helvolic acid from the ethyl extract of K3 and aszonapyrone A (4b) and B (4a), tryptoquivaline T and L (5) and 3'-(4-oxoquinazolin-3-yl) spiro [1H-indole-3,5'-oxo-lane]-2,2'-dione from the ethyl extract of K2.^[13,22] Compounds 1 to 5 were tested for the *in vitro* growth inhibition against MCF7, NCI-H460, and A375-C5 cancer cell lines, with compounds 2, 3, 4b demonstrating effect in the three cell lines^[13] and compound 5 in MCF7 cells.^[23] Interestingly, aszonapyrone A which is a constituent of both E2 and E3, was considered to be the most potent compound with GI₅₀ 10 µM for all the cell lines tested. Consequently, these compounds and, possibly others, may be responsible for the anti-proliferative effect of E2 and E3.

The two fungal crude extracts E2 and E3, revealed anti-proliferative effects throughout the tested concentrations, demonstrating a dose-response effect. These results are in line with morphological changes observed by phase contrast microscope after treatments either with the extracts or Dox (data not shown). The main changes were decreased cell density, increasing of rounded and detached cells (that may indicate cell death), and cell shrinkage.

Only extracts having an IC₅₀ ≤ 200 µg/mL and that did not induce direct cytotoxic effect were used in the following assays, namely to assess the clonogenic potential, the percentage of DNA damage and the ability to induce cell death. Therefore, extracts E2 and E3 were selected for HT29, HCT116, MCF7, and A375 (only for E2) cell lines.

A clonogenic assay was performed in order to assess whether the crude fungal extracts possess a long-term cytostatic effect on the ability of a single cell to proliferate into a viable colony.^[24] Cells previously exposed to the extracts for 48 h were allowed to grow in fresh medium for 10 days, dyed, and afterward all colonies formed by more than 50 cells were counted. As shown in Figure 2, E2 exhibited a significant decrease of clonogenic potential by over 90% in all tested cell lines, more specifically in HT29 (94%), HCT116 (97%), A375 (99%), and MCF7 (97%) cancer cell lines, when compared with the control (DMSO). E3 also exhibited a strong reduction of the proliferative ability of a single cell to form a viable colony in MCF7 (93%) and moderate inhibition in HCT116 (25%) cells. Dox showed nearly total inhibition of clonogenic potential in all cell lines tested. These results show that both E2 and E3 (except for E3 in HT29 cells) not only affect a short-term cell proliferation, which is in line with the MTT reduction assay, but also have an impact over indefinite proliferation mechanisms.

DNA damage was determined quantitatively by a single-cell electrophoresis assay or comet assay [Figure 3]. HCT116, MCF7, and A375 cells were exposed to the IC₅₀ concentrations of E2 and E3 [Table 1] and Dox (as a positive control) for 4, 24, and 48 h prior to the comet assay. Most of the cancer cell lines tested presented a consistent increase in DNA strand breaks by one or more of the extracts, with an exception of HT29 colon cell line (data not shown), in which neither extract (E2 and E3) produced the effect. In the MCF7 cells, E2 (26%) and E3 (13%) significantly induced DNA damage relative to untreated control cells. Moreover, E2 also induced significant DNA damage in A375 (22%) and HCT116 cells (11%) in relation to the negative control. However, E3 did not exhibit a significant difference as to the negative control in HCT116 cells. Drugs that are able to induce consistent DNA damage may lead to cell death induction if the DNA damage is not repaired and allowed to build up.^[25]

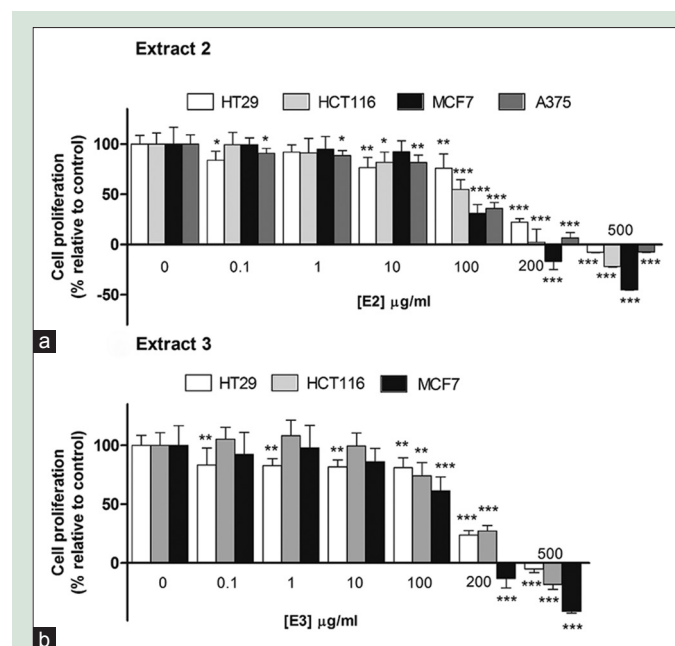


Figure 1: Dose-response effects of extracts *N. laciniosa* KUFC 7896 (a), *N. fischeri* KUFC 6344 (b) on cell proliferation in human caucasian colon adenocarcinoma Grade II cell line, human colorectal carcinoma cell line, human breast adenocarcinoma cell line and human malignant melanoma cell line cells after 48 h, evaluated by 3-(4,5-dimethylthiazol-2-yl)-2,5-diphenyltetrazolium bromide assay. Results are expressed as mean ± standard deviation of at least six independent experiments, in duplicate. Significant differences (* $P \leq 0.05$; ** $P \leq 0.01$ and *** $P \leq 0.001$), were determined by the *post-hoc* Newman-Keuls multiple comparison test

Table 2: Effect of 100 µg/mL E2 and E3 extracts on cell proliferation (percentage of cell inhibition) after 48 h of incubation

Cancer cell lines	Percentage of cell inhibition	
	E2 extract	E3 extract
HT29	24	19
HCT116	45	26
MCF7	69	39
A375	64	ND

ND: Not determined; E2: *Neosartorya laciniosa* KUFC 7896; E3: *Neosartorya fischeri* KUFC 6344; HT29: Human caucasian colon adenocarcinoma grade II cell line; HCT116: Human colorectal carcinoma cell line; MCF7: Human breast adenocarcinoma cell line; A375: Human malignant melanoma cell line

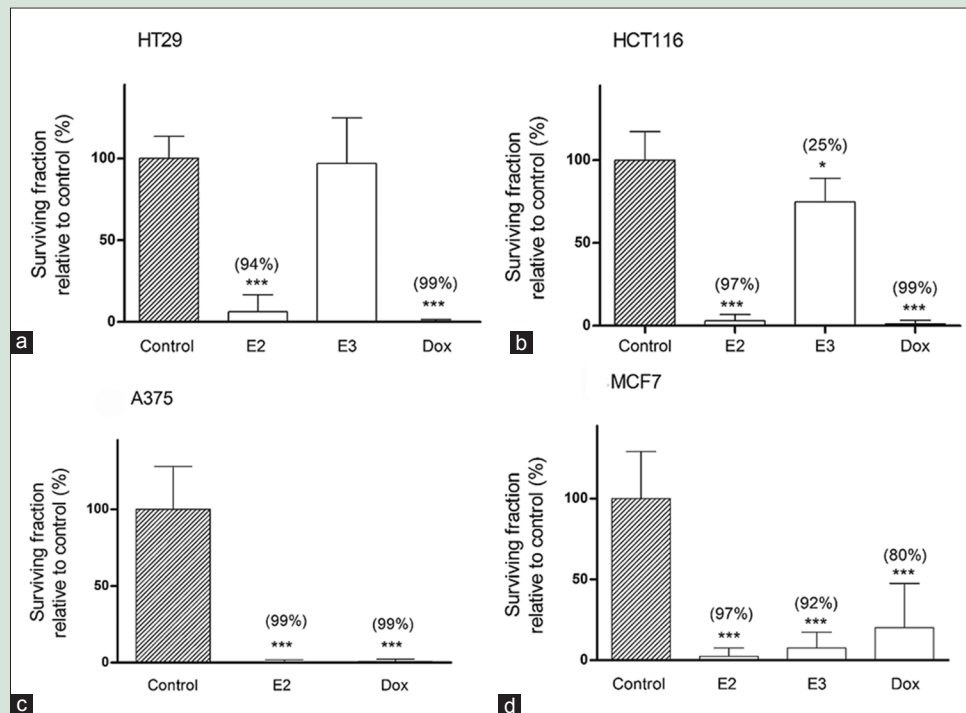


Figure 2: Effect of extract *N. laciniosa* KUFC 7896 and *N. fischeri* KUFC 6344 on the clonogenic potential of human tumour cell lines; (a) human caucasian colon adenocarcinoma Grade II cell line cell line; (b) human colorectal carcinoma cell line cell line; (c) human malignant melanoma cell line and (d) human breast adenocarcinoma cell line cell line. Percentages in brackets are shown as the increase in relation to negative control. Results are expressed as mean \pm standard deviation of at least three independent experiments. Significant differences (* $P \leq 0.05$; ** $P \leq 0.01$ and *** $P \leq 0.001$) when compared with negative control were determined by one-way ANOVA, followed by the *post-hoc* Dunnett's test

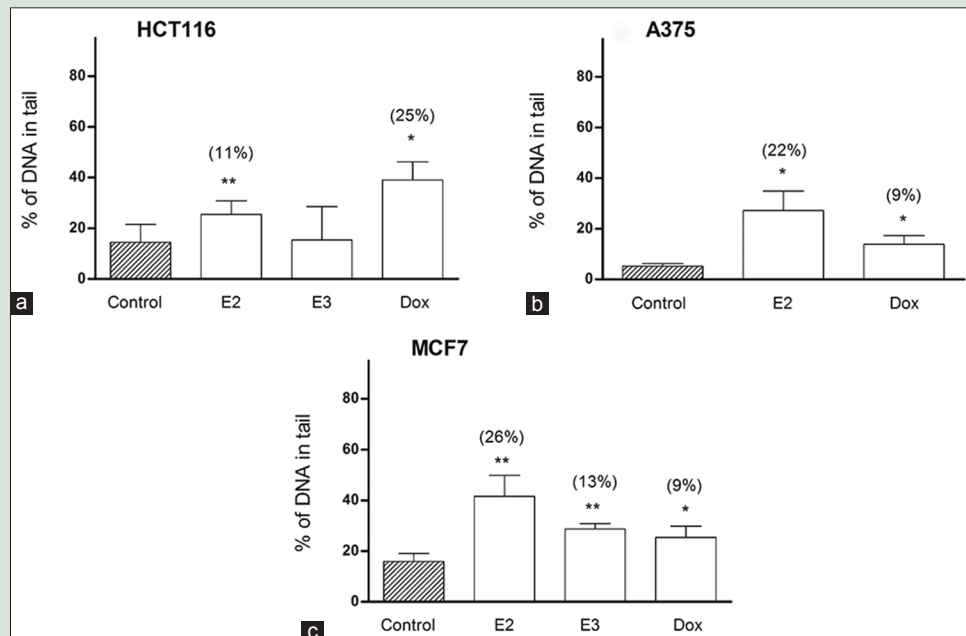


Figure 3: Effect of extract *N. laciniosa* KUFC 7896 and *N. fischeri* KUFC 6344 on DNA damage in (a) human colorectal carcinoma cell line, (b) human malignant melanoma cell line and (c) human breast adenocarcinoma cell line cells evaluated by comet assay. Results are the mean \pm standard deviation at least three independent experiments. Significant differences (* $P \leq 0.05$ and ** $P \leq 0.01$) when compared with negative control were determined by one-way ANOVA, followed by the *post-hoc* Dunnett's test. Additionally, a Student's *t*-test was selectively used to access significant differences in human colorectal carcinoma cell line (*N. laciniosa* KUFC 7896), human malignant melanoma cell line (doxorubicin) and human breast adenocarcinoma cell line (doxorubicin) in relation to the respective control.

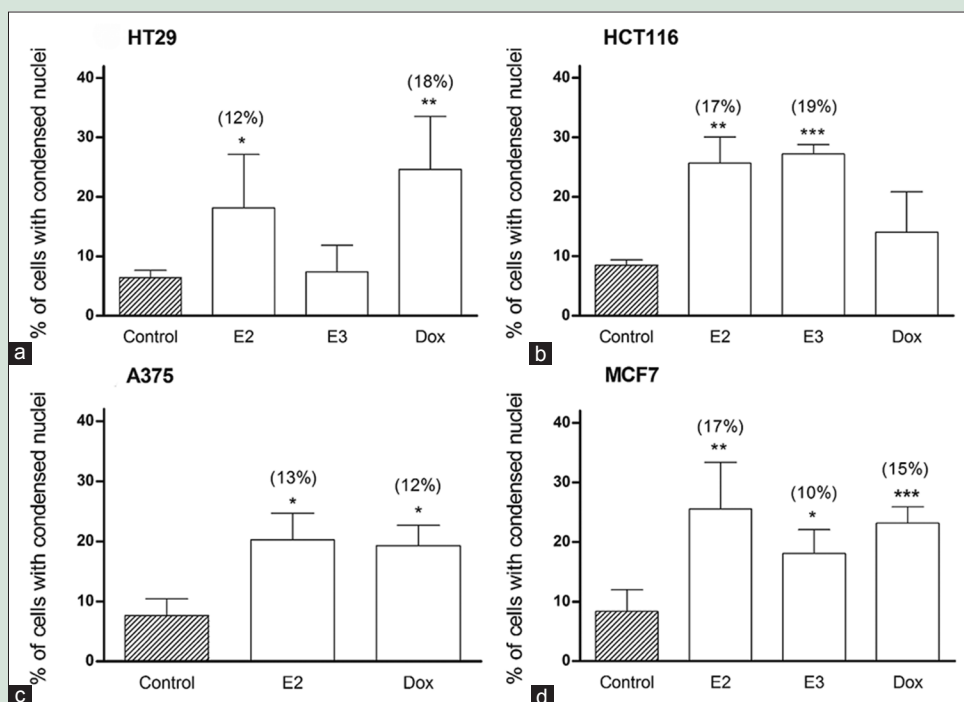


Figure 4: Effect of extract *N. laciniosa* KUFC 7896 and *N. fischeri* KUFC 6344 on cell death in (a) human caucasian colon adenocarcinoma Grade II cell line, (b) human colorectal carcinoma cell line, (c) human malignant melanoma cell line and (d) human breast adenocarcinoma cell line cells assessed by nuclear condensation assay. Percentages in brackets correspond to the increase in relation to negative control. Results are the mean \pm standard deviation of at least three independent experiments. Significant differences ($*P \leq 0.05$; $**P \leq 0.01$, and $***P \leq 0.001$) when compared with negative control were determined by one-way ANOVA, followed by the *post-hoc* Dunnett's test. In addition, a Student's *t*-test was selectively used to access significant differences in human caucasian colon adenocarcinoma Grade II cell line (*N. laciniosa* KUFC 7896) in relation to the control

In order to discern whether the anti-proliferative effect observed through the MTT reduction assay was due to the induction of cell death, nuclear condensation was analyzed after cells were subjected to a 48 h exposure to the respective IC_{50} concentrations of E2 and E3 [Figure 4]. When analyzing nuclear condensation, a significant increase in the number of cell death was detected in most of the tested cell lines after treatment with E2 and E3. E3 exhibited a 19% increase in cell death in HCT116 cells, and a 10% increase in MCF7 cells in relation to the negative control. E2 presented a broader induction of cell death, having induced a significant increase of cell death in all tested cell lines. In colon carcinoma cell lines, E2 leads to an increase of 12% in HT29 cells, and 17% in HCT116 cells in relation to the negative control. Moreover, E2 presented a 13% increase in A375 cells, and 17% in MCF7 cells, in comparison to the negative control. Interestingly, E2 showed higher induction of cell death than the positive control Dox in HCT116 and MCF7 cell lines. As referred earlier, some compounds are previously isolated from E2 and E3 showed anti-proliferative effects, however their effects on cell death are still unknown. In summary, E2 was found to decreased cell proliferation in HT29, HCT116, A375, and MCF7 cells at both short- and long-term, by decreasing the proliferative ability of a single cell to form a viable colony. Besides the anti-proliferative effects, E2 also showed an induction of cell death, in part, due to the induction of DNA damage. In turn, E3 demonstrated an anti-proliferative effect at both short- and long-term, and cell death induction in HCT116 and MCF7 cells. However, the mechanisms involved in the induction of cell death seem to be somewhat different since E3 did not induce DNA damage in HCT116 cells. E3 was also found to decrease proliferation in HT29 cells, however this decrease was only observed at short-term and without effect on cell death.

CONCLUSION

These results show, for the first time that, the crude ethyl extracts of *N. laciniosa* (KUFC 7896) and *N. fischeri* (KUFC 6344) exert an anticancer activity in human colon carcinoma, breast adenocarcinoma, and malignant melanoma cells by decreasing cell proliferation and increasing cell death. The investigation of transduction pathways and molecular targets involved in the anticancer effects of these extracts should be carried out.

Financial support and sponsorship

A Ramos was supported by project MARBIOTECH, grant NORTE-07-0124-FEDER-000047-BPD-2013-06. The work was partially funded by project MARBIOTECH (reference NORTE-07-0124-FEDER-000047), co-financed by the North Portugal Regional Operational Programme (ON.2 - O Novo Norte), under the National Strategic Reference Framework, through the European Regional Development Fund (ERDF). The study was additionally funded by the ERDF, through the Competitiveness and Trade Expansion Program, and by national funds provided by the Foundation for Science and Technology, through the project PEst-C/MARL-1A0015/2013. Finally, we thank the support of the Master of Marine Sciences - Marine Resources of the Institute of Biomedical Sciences Abel Salazar, University of Porto.

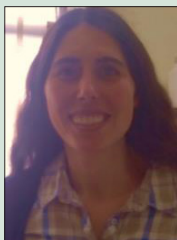
Conflicts of interest

There are no conflicts of interest.

REFERENCES

- Jemal A, Bray F, Center MM, Ferlay J, Ward E, Forman D. Global cancer statistics. *CA Cancer J Clin* 2011;61:69-90.
- Holohan C, Van Schaeybroeck S, Longley DB, Johnston PG. Cancer drug resistance: An evolving paradigm. *Nat Rev Cancer* 2013;13:714-26.
- İşeri OD, Kars MD, Eroğlu S, Gündüz U. Drug resistant MCF-7 cell lines also developed cross-resistance to structurally unrelated anticancer agents. *Int J Hematol Oncol* 2009;19:1-8.
- Mayer AM, Glaser KB, Cuevas C, Jacobs RS, Kem W, Little RD, *et al.* The odyssey of marine pharmaceuticals: A current pipeline perspective. *Trends Pharmacol Sci* 2010;31:255-65.
- García-Caballero M, Mari-Beffa M, Cañedo L, Medina MÁ, Quesada AR. Toluquinol, a marine fungus metabolite, is a new angiostatic that interferes with the Akt pathway. *Biochem Pharmacol* 2013;85:1727-40.
- Lind KF, Hansen E, Østerud B, Eilertsen KE, Bayer A, Engqvist M, *et al.* Antioxidant and anti-inflammatory activities of baretin. *Mar Drugs* 2013;11:2655-66.
- Mayer A, Rodríguez A, Tagliatela-Scafati O, Fusetani N. Marine pharmacology in 2009–2011: Marine compounds with antibacterial, antidiabetic, antifungal, anti-inflammatory, antiprotazoal, antituberculosis, and antiviral activities; affecting the immune and nervous systems, and other miscellaneous mechanisms of action. *Mar Drugs* 2013;11:2510-73.
- Newman DJ, Cragg GM. Marine-sourced anti-cancer and cancer pain control agents in clinical and late preclinical development. *Mar Drugs* 2014;12:255-78.
- Ribrag V, Caballero D, Fermé C, Zucca E, Arranz R, Briones J, *et al.* Multicenter phase II study of plitidepsin in patients with relapsed/refractory non-Hodgkin's lymphoma. *Haematologica* 2013;98:357-63.
- Pejin B, Jovanovic KK, Mojovic M, Savic AG. New and highly potent antitumor natural products from marine-derived fungi: Covering the period from 2003 to 2012. *Curr Top Med Chem* 2013;13:2745-66.
- Xie G, Zhu X, Li Q, Gu M, He Z, Wu J, *et al.* SZ-685C, a marine anthraquinone, is a potent inducer of apoptosis with anticancer activity by suppression of the Akt/FOXO pathway. *Br J Pharmacol* 2010;159:689-97.
- Buttachon S, Chandrapatya A, Manoch L, Silva A, Gales L, Bruyère C, *et al.* Sartorymensen, a new indole alkaloid, and new analogues of tryptoquivaline and fiscalins produced by *Neosartorya siamensis* (KUFC 6349). *Tetrahedron* 2012;68:3253-62.
- Eamvijarn A, Gomes NM, Dethoup T, Buaruang J, Manoch L, Silva A, *et al.* Bioactive meroditerpenes and indole alkaloids from the soil fungus *Neosartorya fischeri* (KUFC 6344), and the marine-derived fungi *Neosartorya lacinososa* (KUFC 7896) and *Neosartorya tsunodae* (KUFC 9213). *Tetrahedron* 2013;69:8583-91.
- Kijjoa A, Santos S, Dethoup T, Manoch L, Almeida AP, Vasconcelos MH, *et al.* Sartoryglabrin, analogs of ardeemins, from *Neosartorya glabra*. *Nat Prod Commun* 2011;6:807-12.
- Tan QW, Ouyang MA, Shen S, Li W. Bioactive metabolites from a marine-derived strain of the fungus *Neosartorya fischeri*. *Nat Prod Res* 2012;26:1402-7.
- Ramos AA, Lima CF, Pereira ML, Fernandes-Ferreira M, Pereira-Wilson C. Antigenotoxic effects of quercetin, rutin and ursolic acid on HepG2 cells: Evaluation by the comet assay. *Toxicol Lett* 2008;177:66-73.
- Franken NA, Rodermond HM, Stap J, Haveman J, van Bree C. Clonogenic assay of cells *in vitro*. *Nat Protoc* 2006;1:2315-9.
- Munshi A, Hobbs M, Meyn RE. Clonogenic cell survival assay. In: Blumenthal RD, editor. *Chemosensitivity*. Totowa, NJ: Humana Press; 2005. p. 21-8.
- Collins AR, Oscoz AA, Brunborg G, Gaivão I, Giovannelli L, Kruszewski M, *et al.* The comet assay: Topical issues. *Mutagenesis* 2008;23:143-51.
- Ramos AA, Azqueta A, Pereira-Wilson C, Collins AR. Polyphenolic compounds from *Salvia species* protect cellular DNA from oxidation and stimulate DNA repair in cultured human cells. *J Agric Food Chem* 2010;58:7465-71.
- Ravizza R, Gariboldi MB, Passarelli L, Monti E. Role of the p53/p21 system in the response of human colon carcinoma cells to Doxorubicin. *BMC Cancer* 2004;4:92.
- Gomes NM, Bessa LJ, Buttachon S, Costa PM, Buaruang J, Dethoup T, *et al.* Antibacterial and antibiofilm activities of tryptoquivalines and meroditerpenes isolated from the marine-derived fungi *Neosartorya paulistensis*, *N. lacinososa*, *N. tsunodae*, and the soil fungi *N. fischeri* and *N. siamensis*. *Mar Drugs* 2014;12:822-39.
- Sodngam S, Sawadstitang S, Suwannasai N, Mongkoltharuk W. Chemical constituents, and their cytotoxicity, of the rare wood decaying fungus *Xylaria humosa*. *Nat Prod Commun* 2014;9:157-8.
- Sumantran VN. Cellular chemosensitivity assays: An overview. *Methods Mol Biol* 2011;731:219-36.
- Lord CJ, Ashworth A. The DNA damage response and cancer therapy. *Nature* 2012;481:287-94.

ABOUT AUTHORS



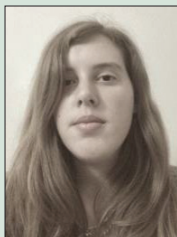
Alice Abreu Ramos

Alice Abreu Ramos, obtained a PhD degree in Biology in 2011, at the University of Minho, Portugal, under a project run in cooperation with the University of Oslo, Norway. She is postdoc fellow at the Interdisciplinary Center for Marine and Environmental Research (CIIMAR), and an invited lecturer at the ICBAS – University of Porto. Her scientific interests are related with the anticancer effects of natural compounds through effects on cell proliferation and cell death signaling pathways, and the protective effects of natural compounds through protection of DNA from damage and induction of DNA repair activity.



Bruno Castro-Carvalho

Bruno Castro-Carvalho, is a member of the Histomorphology, Pathophysiology and Applied Toxicology group at the Interdisciplinary Center of Marine and Environmental Research of the University of Porto. He has a Bachelor degree in Biology by the Faculty of Sciences of the University of Porto and a Master degree in Marine Sciences – Marine Resources by the Institute of Biomedical Sciences Abel Salazar of the University of Porto. His Master's dissertation was focused on the *in vitro* effect of marine derived products in human cancer cell lines.



Maria Prata-Sena

Maria Prata-Sena, has a Bachelor's degree in Biology and a Master's in Marine Sciences - Marine Resources by the University of Porto. Maria's Master's dissertation approached the *in vitro* effects of several marine-derived extracts and compounds in human cancer cell lines. Maria is currently a member of the Histomorphology, Pathophysiology and Applied Toxicology research group at the Interdisciplinary Center of Marine and Environmental Research of the University of Porto.



Tida Dethoup

Tida Dethoup, is an Assistant Professor at the Department of Plant Pathology, Faculty of Agriculture, Kasetsart University, Bangkok, Thailand. She received her PhD in Plant Pathology from same Faculty in 2007. In 2012, she spent ten months working on isolation and structure elucidation of fungal secondary metabolites with Prof. Anake Kijjoa at the Instituto de Ciências Biomédicas Abel Salazar of the University of Porto. Her current research interest focuses on biodiversity, taxonomy, and bioactive secondary metabolites produced by soil and marine-derived fungi against plant pathogens. She has expertise in taxonomic identification of fungi using morphological and molecular analyses.



Suradet Buttachon

Suradet Buttachon, obtained his PhD in Entomology from the Faculty of Agriculture, Kasetsart University, Bangkok, Thailand, in 2013. He participated in this work as a post-doctoral fellow of the project "MARBIOTECH", of the Interdisciplinary Centre of Marine and Environmental Research (CIIMAR) of the University of Porto. He has a vast experience in several chromatographic methods for isolation of Natural Products. He also has expertise in 1D (¹H, ¹³C) and 2D (COSY, HSQC, HMBC, NOESY) NMR analysis for structure elucidation. His current research interest is on bioactive secondary metabolites from marine-derived fungi.



Anake Kijjoa

Anake Kijjoa is a Professor of Chemistry of the ICBAS - UPorto, Portugal, and PI of the Chemistry and Biological Activity of Marine Natural Products group of the Interdisciplinary Centre of Marine and Environmental Research (CIIMAR). He is a member of Editorial Board of journals in the field of Natural Products and an Associate Editor of journal Marine Drugs. He has published over 120 research articles, review articles, as well as chapters of internationally circulated books.



Eduardo Rocha

Eduardo Rocha is a Full Professor of the ICBAS - UPorto, Portugal, and PI of the Histomorphology, Physiopathology and Applied Toxicology group at the CIIMAR - UPorto. He published about 130 research papers in international journals. His research focuses on impacts of sex-steroids in liver cellularity, peroxisome dynamics, ER-PPAR cross-talk and toxicopathology. Also, he is leading studies to unveil the potential and mechanisms underlying anticancer activity of compounds extracted and isolated from marine organisms.