

CORRECTION

Open Access

Correction: Transcriptomics and proteomics analyses of the PACAP38 influenced ischemic brain in permanent middle cerebral artery occlusion model mice

Motohide Hori^{1,2}, Tomoya Nakamachi^{2,4}, Randeep Rakwal^{2,4*}, Junko Shibato², Tetsuo Ogawa², Toshihiro Aiuchi², Tatsuaki Tsuruyama¹, Keiji Tamaki¹ and Seiji Shioda^{2*}

The Figure Two (Figure 1 here), X-axis description of each sample was inverted in the original publication [1].

With reference to corrected Figure Two (Figure 1 here), we have the following revised text.

On Page 9, left column: lines 19-24 should read as -

“Similarly, *Il6*, *S100a5*, *Il22*, *Il1b*, *Igf1*, and *Ccl2* were highly expressed at 6 h in the PACAP-treated ischemic brain, whereas their expression level decreased at 24 h compared to the PMCAO effect alone (Figure Two (Figure 1 here)). *Fgf21*, *Pitpnc1*, and *Epha3* genes showed an increase in expression at 24 h over PMCAO alone (Figure Two (Figure 1 here)).”

On Page 11, right column: lines 16-19 should read as -

“In the ischemic hemisphere at 24 h, the PACAP plus PMCAO expression level of *Il6* was also reduced compared to the PMCAO plus saline control.”

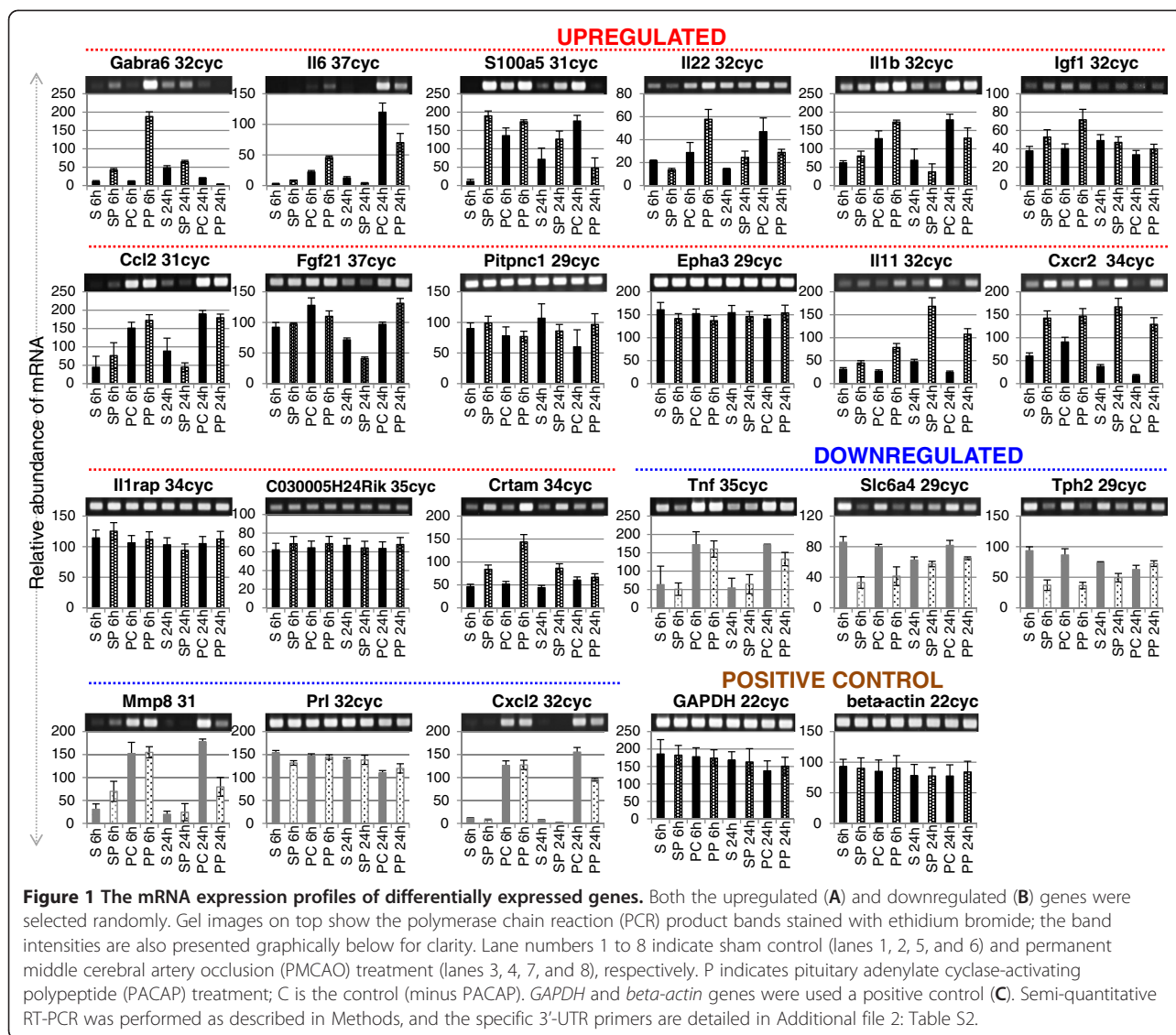
We regret any inconvenience that this inaccuracy in Figure Two (Figure 1 here) and therein the figure legend, which could not be properly corrected at the proof stage, in the originally published manuscript might have caused.

* Correspondence: plantproteomics@gmail.com; shioda@med.showa-u.ac.jp

²Department of Anatomy I, School of Medicine, Showa University, 1-5-8 Hatanodai, Shinagawa, Tokyo 142-8555, Japan

⁴Graduate School of Life and Environmental Sciences, University of Tsukuba, Tsukuba 305-8572, Japan

Full list of author information is available at the end of the article



Author details

¹Department of Forensic Medicine and Molecular Pathology, School of Medicine, Kyoto University, Kyoto 606-8315, Japan. ²Department of Anatomy I, School of Medicine, Showa University, 1-5-8 Hatanodai, Shinagawa, Tokyo 142-8555, Japan. ³Department of Center for Biotechnology, Showa University, 1-5-8 Hatanodai, Shinagawa, Tokyo 142-8555, Japan. ⁴Graduate School of Life and Environmental Sciences, University of Tsukuba, Tsukuba 305-8572, Japan.

Received: 31 January 2013 Accepted: 31 January 2013
 Published: 31 January 2013

References

- Hori M, Nakamachi T, Rakwal R, Shibata J, Ogawa T, Aiuchi T, Tsuruyama T, Tamaki K, Shioda S: Transcriptomics and proteomics analyses of the PACAP38 influenced ischemic brain in permanent middle cerebral artery occlusion model mice. *J Neuroinflammation* 2012, **9**:256.

doi:10.1186/1742-2094-10-18

Cite this article as: Hori et al.: Correction: Transcriptomics and proteomics analyses of the PACAP38 influenced ischemic brain in permanent middle cerebral artery occlusion model mice. *Journal of Neuroinflammation* 2013 **10**:18.

Submit your next manuscript to BioMed Central and take full advantage of:

- Convenient online submission
- Thorough peer review
- No space constraints or color figure charges
- Immediate publication on acceptance
- Inclusion in PubMed, CAS, Scopus and Google Scholar
- Research which is freely available for redistribution

Submit your manuscript at
www.biomedcentral.com/submit

