

RESEARCH ARTICLE

Prognostic Impact of Time to Ipsilateral Breast Tumor Recurrence after Breast Conserving Surgery

Marie Gosset¹, Anne-Sophie Hamy¹, Peter Mallon², Myriam Delomenie¹, Delphine Mouttet¹, Jean-Yves Pierga^{3,4}, Marick Lae⁵, Alain Fourquet⁶, Roman Rouzier¹, Fabien Reyat^{1,7,8*}, Jean-Guillaume Feron¹

1 Department of Surgery, Institut Curie, 75005, Paris, France, **2** Breast Unit, Belfast City Hospital, Lisburn Road, Belfast, BT9 7AB, Northern Ireland, **3** Department of Medical Oncology, 75005, Institut Curie, Paris, France, **4** Paris Descartes University, 75006, Paris, France, **5** Department of Tumor Biology, Institut Curie, 75005, Paris, France, **6** Department of Radiotherapy, Institut Curie, 75005, Paris, France, **7** Residual Tumor and Response to Treatment Lab, Translational Research Department, Institut Curie, 75005, Paris, France, **8** UMR932 Immunity and Cancer, INSERM, Institut Curie, 75005, Paris, France

* fabien.reyat@curie.fr



OPEN ACCESS

Citation: Gosset M, Hamy A-S, Mallon P, Delomenie M, Mouttet D, Pierga J-Y, et al. (2016) Prognostic Impact of Time to Ipsilateral Breast Tumor Recurrence after Breast Conserving Surgery. PLoS ONE 11(8): e0159888. doi:10.1371/journal.pone.0159888

Editor: Pei-Yi Chu, Fu Jen Catholic University, TAIWAN

Received: March 23, 2016

Accepted: July 8, 2016

Published: August 5, 2016

Copyright: © 2016 Gosset et al. This is an open access article distributed under the terms of the [Creative Commons Attribution License](https://creativecommons.org/licenses/by/4.0/), which permits unrestricted use, distribution, and reproduction in any medium, provided the original author and source are credited.

Data Availability Statement: All relevant data are within the paper and its Supporting Information files.

Funding: The authors have no support or funding to report.

Competing Interests: The authors have declared that no competing interests exist.

Abstract

Background

The poor prognosis of patients who experience ipsilateral breast tumor recurrence (IBTR) after breast conserving surgery (BCS) is established. A short time between primary cancer and IBTR is a prognostic factor but no clinically relevant threshold was determined. Classification of IBTR may help tailor treatment strategies.

Purpose

We determined a specific time frame, which differentiates IBTR into early and late recurrence, and identified prognostic factors for patients with IBTR at time of the recurrence.

Methods

We analyzed 2209 patients with IBTR after BCS. We applied the optimal cut-points method for survival data to determine the cut-off times to IBTR. A subgroup analysis was performed by hormone receptor (HR) status. Survival analyses were performed using a Cox proportional hazard model to determine clinical features associated with distant-disease-free survival (DDFS) after IBTR. We therefor built decision trees.

Results

On the 828 metastatic events observed, the majority occurred within the first 3 months after IBTR: 157 in the HR positive group, 98 in the HR negative group. We found different prognostic times to IBTR: 49 months in the HR positive group, 33 in the HR negative group. After multivariate analysis, time to IBTR was the first discriminant prognostic factor in both groups (HR 0.65 CI95% [0.54–0.79] and 0.42 [0.30–0.57] respectively). The other following variables were significantly correlated with the DDFS: the initial number of positive lymph nodes for both groups, the initial tumor size and grade for HR positive tumors.

Conclusion

A short interval time to IBTR is the strongest factor of poor prognosis and reflects occult distant disease. It would appear that prognosis after IBTR depends more on clinical and histological parameters than on surgical treatment. A prospective trial in a low-risk group of patients to validate the safety of salvage BCS instead of mastectomy in IBTR is needed.

Introduction

The oncological outcome (overall survival, distant metastasis, contralateral breast cancer rates) of breast-conserving surgery (BCS) combined with adjuvant radiotherapy is equivalent to mastectomy in the treatment of the early-stage breast cancer [1–5]. The incidence of ipsilateral breast tumor recurrence (IBTR) following BCS is estimated from 5 to 10% in studies with 10 years follow up from the initial tumor treatment [3,4,6–8].

Accurate estimation of prognosis for patients with IBTR is difficult due to complex interactions of multiple clinico-pathological features. Several authors have suggested that long-term prognosis remains good in recurrent lesions that are less than 2 cm, hormone receptor positive and absent nodal metastases [6,7,9–13]. Time from initial breast cancer treatment to IBTR was identified in several studies as a major prognostic factor. A short interval time is a strong determinant of risk for distant metastasis [6,7,10,14,15]. There is, however, no defined cut-off period to accurately categorize IBTR into early relapse and late relapse. Early and late IBTR may correspond to 2 distinct types of IBTR [11–13,16–18]: a) true recurrences, corresponding to re-growth of resistant cells after initial treatment, and b) new primary tumors, corresponding to *de novo* cancer (early relapse and late relapse respectively). Accurate classification of IBTR into early and late relapse may help better predict subsequent prognosis, as new primary tumors are considered to have an improved survival compared to true relapses [11–13,16–18].

In addition to increase prognostic accuracy, classification of IBTR may help tailor surgical treatment strategies. Current guidelines for the surgical management of all IBTR cases recommend performing a modified radical mastectomy [19,20]. In theory, however, surgical management of a new primary tumor could theoretically involve a further BCS procedure, provided that local condition would ensure an acceptable aesthetic result. Several retrospective studies have reported outcomes following “salvage” BCS for IBTR. Overall, the risk of second relapse was high (30%) but the five-year overall survival rate reached 80–90% [10,21–27]. These studies however identified a subset of cases with favorable characteristics (longer time to first relapse, smaller tumor size, node negativity) associated with a lower rate of further local relapse.

The aims of this study were to 1) determine a specific time frame, which differentiates IBTR into early relapse and late relapse. 2) identify prognostic factors for patients with IBTR at the time of the recurrence 3) Suggest options for the surgical management of early and late IBTR.

Material and Methods

Patients

All experiments were performed retrospectively and in accordance with the French Bioethics Law 2004–800, the French National Institute of Cancer (INCa) Ethics Charter and after approval by the Institut Curie review board and ethics committee (Comité de Pilotage of the Groupe Sein). In the French legal context, our institutional review board waived the need for written informed consent from the participants. Moreover, women were informed of the

research use of their tissues and did not declare any opposition for such researches. Data were analyzed anonymously. We identified in the Institut Curie prospective breast cancer database all patients with primary invasive breast cancer treated by breast conserving surgery from 1980 to 2010, and who experienced subsequent ipsilateral breast tumor recurrence (IBTR). Patients who were diagnosed with distant metastases within 3 months of IBTR were also included, whereas patients with metastases or lymph node recurrence diagnosed prior to IBTR were excluded. The following clinical and pathological variables of primary breast cancer were available for analysis: age, BMI, initial tumor size and histological grade, initial nodal and hormonal status and adjuvant treatment. Prognostic impact of a continuous variable is difficult to demonstrate so we used categorization of age, as most previous studies [6,9,10,14,15,21,23,28]. Estrogen receptor (ER) and progesterone receptor (PR) status were determined as follows. After rehydration and antigenic retrieval in citrate buffer (10mM, pH 6.1), the tissue sections were stained for ER (clone 6F11, Novocastra, Leica Biosystems, Newcastle, UK; 1/200) and PR (clone 1A6, Novocastra, 1/200). Revelation of staining was performed using the Vectastain Elite ABC peroxidase mouse IgG kit (Vector, Burlingame, CA, USA) and diaminobenzidine (Dako A/S, Glostrup, Denmark) as chromogen. Positive and negative controls were included in each slide run. Cases were considered positive for ER and PR according to the standardised guidelines using a cutoff of greater than or equal to 10% stained tumor nuclei. Hormone receptors (HR) positivity was defined by positivity of either ER or PR, and HR negativity was defined by the negativity of both ER and PR.

Following BCS for the primary cancer, patients had received external radiotherapy according to national and local guidelines [20]. Adjuvant chemotherapy and hormonal therapy were also administrated according to national guidelines [20].

At the time of recurrence, all the patients had a radical mastectomy and adjuvant treatment following discussion at multidisciplinary meeting. Hormone receptor (HR) status and histological characteristics of the recurrence were unknown. Patients were followed up by physical examination every 6 months and mammography with or without ultrasonography every year.

Statistical analysis

Baseline characteristics were described as a number (%) for qualitative variables and median (interquartile range, IQ) for quantitative variables. Data was compared using Chi-square tests for categorical variables and Student's t-tests for continuous variables.

We assumed from the literature that the time from initial treatment to IBTR diagnosis had prognostic significance on survival. Due to the possibility of a non-linear relationship between time to IBTR and survival, we applied the optimal cut-points method for survival data as defined by Contal et al [29] (R package *survMisc*). This method determines the cut-off time point yielding the most significant prognostic differences between two groups. The cut-off time point chosen minimizes the *p*-value linking the prognostic factor to outcome. Because of well-described differences of time-to relapse according to HR status [6,21,23,30], a subgroup analysis was performed by hormonal status.

Post relapse survival analyses were performed with the Kaplan-Meier estimate of the survival function. Primary endpoint was distant-disease-free survival (DDFS) after IBTR, defined as the time from first local relapse until distant disease. Survival curves were compared using log-rank tests. Estimation of hazard ratios and their associated 95% confidence interval was carried out using the Cox proportional hazard model. Age, initial adjuvant treatment, initial tumor size and histological grade, initial nodal and time to IBTR were included in the univariate analysis. Variables with a *p*-value of the log rank score test below 0.15 in univariate analysis were included in the multivariate model. Data were censored at 10 years. DDFS of each

subgroup were estimated by the Kaplan–Meier method, they were compared using the log-rank test and plotted accordingly. Significance level was 0.05. A decision tree was established to identify homogeneous subgroups of patients and have a better clinical representation of the model. The rules of the construction of the decision tree are: the log-rank test p-value has to be significant and each subgroup defined by the discrimination has to include at least ten patients. Between several factors we choose the factor which minimizes the log-rank test p-value. Survival and metastasis free survival rates of the subgroups identified by the decision tree were estimated by the Kaplan–Meier method, and were compared using the log-rank test. All these estimations were then plotted. Significance level was 0.05. Analyses were performed using R software, 2.13.2 version (<http://cran.rproject.org>) using the following packages: glm, survival and rpart.

Results and Discussion

Results

A total of 5837 patients treated at Institut Curie had an IBTR after an initial invasive breast cancer locally treated by breast conserving surgery plus radiotherapy. We excluded 2641 patients diagnosed with distant metastases or lymph node metastases before the diagnostic of local recurrence, and 987 patients with unknown initial hormonal receptor (HR) status. Overall, 2209 patients remained for the analysis. The patients and the tumor characteristics of the primary tumor are summarized in [Table 1](#), and are also described by hormone receptor (HR) status. Median age at cancer diagnosis was 49 years. The median tumor size was 2.0 cm, 67.8% had no lymph node involvement ($n = 1291$). Primary tumors were mostly HR positive (78.7%, $n = 1738$). HR negative tumors had a significantly larger tumor size ($p < 0.01$), higher histological Elston and Ellis grade ($p < 0.001$) and higher rates of lymph nodes involvement ($p < 0.01$) at time of the initial diagnosis. The median interval time to local recurrence in the whole population was 68 months and was significantly longer in the HR-positive subgroup (78 months), when compared to the HR-negative subgroup (38 months) ($p < 0.01$). After IBTR, the median follow-up after IBTR diagnostic was 54 months.

On 2209 patients with IBTR, 828 experience distant metastases (597 in HR positive group and 231 in HR negative group). The median time from IBTR to distant disease was 37 months, and was significantly different according to HR status (42 months in the HR-positive subgroup *versus* 23 months in the HR-negative subgroup, $p < 0.01$). Distant Disease Free survival after IBTR was 67% at five years (95% CI 0.65–0.69). The wide majority of distant metastasis occurred early after IBTR with a peak in the incidence within the first 3 months after IBTR. We observed 157 metastatic events in the HR positive group and 98 in the HR negative group. ([Fig 1](#), [S1A](#) and [S1B Fig](#)).

Timing of IBTR as predictor of DDFS. The delay from initial breast cancer diagnostic to IBTR significantly correlated with prognosis (Distant Disease Free Survival). We identified 34 months as the cut-off for time to IBTR minimizing the p -value linking the time to IBTR to DDFS. This cut-off was different according to HR status (HR positive: 49 months *versus* HR negative: 33 months ([Fig 2A](#) and [2B](#))).

Prognostic factors of post relapse DDFS. After univariate analysis, the following variables were significantly associated with the DDFS for patients with HR positive initial breast cancer: age, initial adjuvant treatment, initial tumor size and grade, number of positive lymph nodes and time to IBTR ([Table 2](#)). After multivariate analysis, the initial tumor size and grade, the number of positive lymph nodes and the time to IBTR (HR 0.65 CI95% [0.54–0.79]) remained significantly associated with DDFS ([Table 2](#)). After applying the regression partition algorithm, time to IBTR was the first discriminant prognostic factor, then the initial tumor

Table 1. Initial characteristics of the population with ipsilateral Breast Cancer Recurrence, at time of primary cancer.

Factors	Global population n = 2209	Hormone receptor Positive Tumors n = 1738	Hormone receptor Negative Tumors n = 471	p
Age (years)				
<40	389 (17.6%)	293 (16.9%)	96 (20.4%)	0.18
40–70	1723 (78.0%)	1366 (78.6%)	357 (75.8%)	
>70	97 (4.4%)	79 (4.5%)	18 (3.8%)	
BMI > 25	302 (23.6%)	244 (23.7%)	58 (23.3%)	0.51
Initial tumor size (cm)	2.0 (1.5–3.0)	2.0 (1.5–3.0)	2.5 (2.0–4.0)	<0.01
No of positive nodes at time of the primary cancer				
0 (pN0)	1291 (67.8%)	1051 (70.1%)	240 (59.3%)	< 0.01
1 or 3 (pN1)	441 (23.2%)	335 (22.3%)	106 (26.2%)	
> 3 (pN2)	172 (9.0%)	113 (7.5%)	59 (14.6%)	
Unknown	305	239	66	
Initial tumor grade (Elston Ellis classification)				
I	501 (23.8%)	470 (28.2%)	31 (7.1%)	< 0.01
II	804 (38.3%)	718 (43.1%)	86 (19.8%)	
III	796 (37.9%)	478 (28.57%)	318 (73.1%)	
Unknown	108	72	36	
Adjuvant treatment				
Radiotherapy	2177 (98.5%)	1713 (98.5%)	464 (98.5%)	0.99
Chemotherapy	832 (37.6%)	555 (31.9%)	277 (58.8%)	< 0.01
Endocrine therapy	895 (40.5%)	810 (46.6%)	85 (18.0%)	<0.01
Time to local recurrence (months)				
	68 (35–124)	78 (42–132)	38 (22–86)	< 0.01
Follow-up after local recurrence (months)				
	54 (22–107)	59 (25–113)	38 (17.5–81.5)	< 0.01
DDFS after local recurrence (months)				
	37 (11–89)	42 (14–93)	23 (4–68.5)	< 0.01

doi:10.1371/journal.pone.0159888.t001

grade. Three prognostic subgroups were identified (Fig 3A): patients with late recurrence (> 49 months, reference group), patients with early recurrence (\leq 49 months) and initial tumor grade 1 (HR = 1.29 (CI95% [1.06–1.60])), and patients with early recurrence and initial tumor grade 2 or 3 (HR = 2.37 (CI95% [1.98–2.96])). The latter group had the poorest prognosis. The Kaplan-Meier curve of the distant disease-free survival for each subgroup is shown in Fig 4A.

In HR negative tumors, after univariate analysis, the following variables were significantly correlated with the DDFS: initial adjuvant chemotherapy, initial tumor size and grade, number of positive lymph nodes and time to IBTR. In multivariate analysis, the initial number of positive lymph nodes and the time to IBTR remained significant (Table 3). As for positive HR tumors, time-to-IBTR was the first discriminant prognostic factor after applying the recursive partition tree algorithm, and then the initial lymph node status. Three prognostic subgroups were also identified (Fig 3B): patients with late recurrence (> 33 months, reference group), patients with early recurrence (\leq 33 months) and initial negative lymph node status (HR = 1.87 (CI95% [1.35–2.72])), and patients with early recurrence and positive lymph nodes (HR = 3.5 (CI95% [2.75–5.07])). The latter group had the poorest prognosis. The Kaplan-Meier plot of DDFS for each subgroup is presented in Fig 4B.

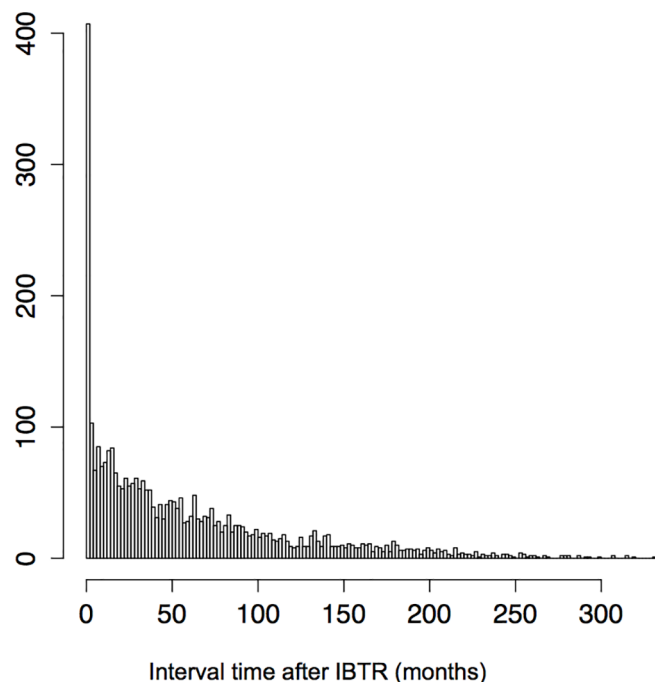


Fig 1. Distant disease occurrence according to time after IBTR for overall population. Vertical bars represent the number of events. Width of vertical bars stands for 3 months.

doi:10.1371/journal.pone.0159888.g001

Discussion

Using one of the largest datasets of patients with IBTR published to date, we confirmed the poor prognosis of patients with IBTR, since 37% of the patients developed metastasis and the majority occurred early after IBTR. We identified time from initial cancer to IBTR as a major prognostic factor. In addition to previous studies we have defined the interval time to local recurrence, which has the strongest significant prognostic factor for DDFS after an IBTR. We identified a delay to IBTR threshold with different cut-offs according to HR status (49 months for hormone positive tumors, and 33 months for hormone negative tumors). We subsequently developed simple decision trees to identify distinct prognostic subgroups, and time to IBTR remained the most important prognostic factor in both groups. Other prognostic factors identified differed according to HR status. The second discriminant prognostic factor was the initial tumor grade for HR positive tumors, but the initial lymph node status for HR negative tumors. The initial characteristics of the two populations were different: patients with HR negative tumors had higher initial tumor grade ($p < 0.01$) and a lymph node involvement more frequent ($p < 0.01$). As most of these patients had a high initial tumor grade (73.1% of grade 3), the initial tumor grade didn't remain a significant prognostic factor in the multivariate analysis for HR negative tumors. In contrast, most of patients with HR positive tumors had no lymph node involvement (70.1%) and this factor was consequently not found as the most discriminant.

The poor prognosis of patients who experience IBTR is well established [4,6,9,31,32]. About 10% of patients are diagnosed with distant disease at time of local relapse, before any local treatment [9,31,33,34]. In our study, more than a third of the patients developed metastasis and the majority of metastasis occurred early, within 3 months IBTR diagnosis. As we know, metastases diagnosed within 3 months of cancer are usually considered as synchronous metastases. This main result shows that isolated breast cancer recurrence is associated with undetected distant disease. But clinical situations are heterogeneous and accurate identification of

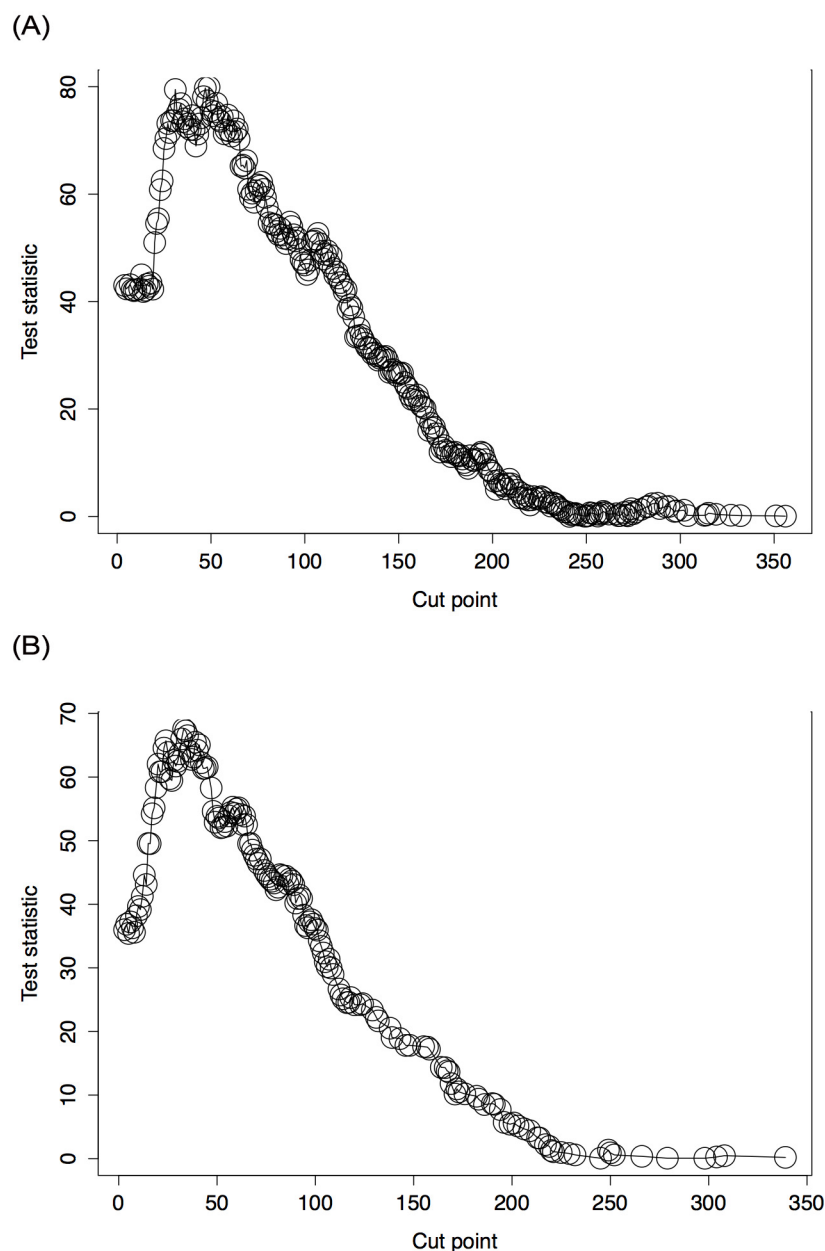


Fig 2. Cutpoint determination. (larger values indicate cut point more likely here). (A) Patients with hormone receptor positive tumors: 49 months. (B) Patients with hormone receptor negative tumors: 33 months.

doi:10.1371/journal.pone.0159888.g002

high-risk patients is difficult. We found that time to IBTR is the most important factor to discriminate prognostic subgroups.

There is evidence that time intervals between the treatment of primary breast cancer and IBTR affect survival [14,15]. As confirmed by our findings, a short time interval is a strong determinant of poor prognosis [6,9,10,23,35–37]. Many empirical interval time cut-off values were reported in the literature (one, 2 or 5 years) [6,9,10,14,23,35–37], but no single threshold clinically relevant was determined. The originality of our work was to use the cut-points method, which allows good discrimination between prognostic subgroups. Furthermore, to

Table 2. Prognostic factors for post relapse disease free survival—hormone receptor positive tumors.

Factors	Population	Event	Univariate analysis Hazard Ratio (CI 95%)	p	Multivariate analysis Hazard Ratio (CI 95%)	p
Age at initial diagnosis (years)						
< 40	293	136	1		1	
40–70	1366	438	0.72 [0.59–0.87]	< 0.001	0.8 [0.64–1]	0.05
>70	79	23	1.03 [0.66–1.61]	0.8	1.32 [0.78–2.25]	0.3
Initial adjuvant treatment						
Chemotherapy	271	113	1.54 [1.22–1.94]	< 0.001	1.04 [0.78–1.38]	0.8
Endocrine therapy	526	173	1.46 [1.19–1.80]	< 0.001	1.30 [1.01–1.67]	0.04
Chemo and endocrine therapy	284	117	2.13 [1.69–2.68]	< 0.001	1.24 [0.92–1.67]	0.038
Tumor size at initial diagnosis						
< or = 2cm	557	139	1		1	
2–5cm	1023	413	1.57 [1.3–1.91]	< 0.001	1.27 [1.03–1.57]	0.02
> 5cm	39	19	2.2 [1.36–3.56]	0.0001	1.37 [0.8–2.35]	0.3
Initial tumor grade						
1	470	106	1			
2	718	236	1.50 [1.19–1.88]	< 0.001	1.43 [1.11–1.87]	0.008
3	478	231	2.28 [1.81–2.87]	< 0.001	1.94 [1.48–2.56]	< 0.001
Positive nodes at initial diagnosis						
0	1051	306	1			
1 to 3	335	133	1.58 [1.29–1.94]	< 0.001	1.39 [1.10–1.76]	0.006
> 3	113	71	3.34 [2.58–4.33]	< 0.001	2.33 [1.72–3.17]	<0.001
Time to IBTR (< or = 49 months versus > 49 months)						
Early	557	279	1		1	
Late	1182	318	0.59 [0.5–0.69]	<0.001	0.65 [0.54–0.79]	<0.001

doi:10.1371/journal.pone.0159888.t002

our knowledge, no author took into account the HR status, while natural history and prognosis of positive and negative HR tumors are inherently different [6,21,23]. The magnitude of the prognostic impact of time to IBTR was higher in the HR-negative group (Hazard ratio: 0.65 [0.54–0.79]) than in the HR-positive tumors (0.42[0.30–0.57]). This is in line with the shape of the survival curves: for negative HR tumors, a clear breakpoint in the survival curves is obvious, while the slope of the curve in the positive HR tumors is more linear.

Such a prognostic impact of interval time to IBTR is in agreement with the concepts of true relapse versus new primitive tumor. It has been shown that patients with a new primary cancer have a better prognosis than those with a true relapse [10–13]. Early recurrences may indicate primary chemoresistant or radiotherapy-resistant tumors. In these cases, local recurrence refers to a true relapse related to resistant residual tumor cells and represents a high-risk subgroup of occult metastatic disease. In contrast, later recurrences may be more likely new primary tumors [11]. These “second primary cancers” represent a localized disease. Several studies have attempted to classify these two distinct types [11,17,38–40]. Most of the classifications are based on the location of the relapse and the histologic subtype. Huang et al classified relapse as

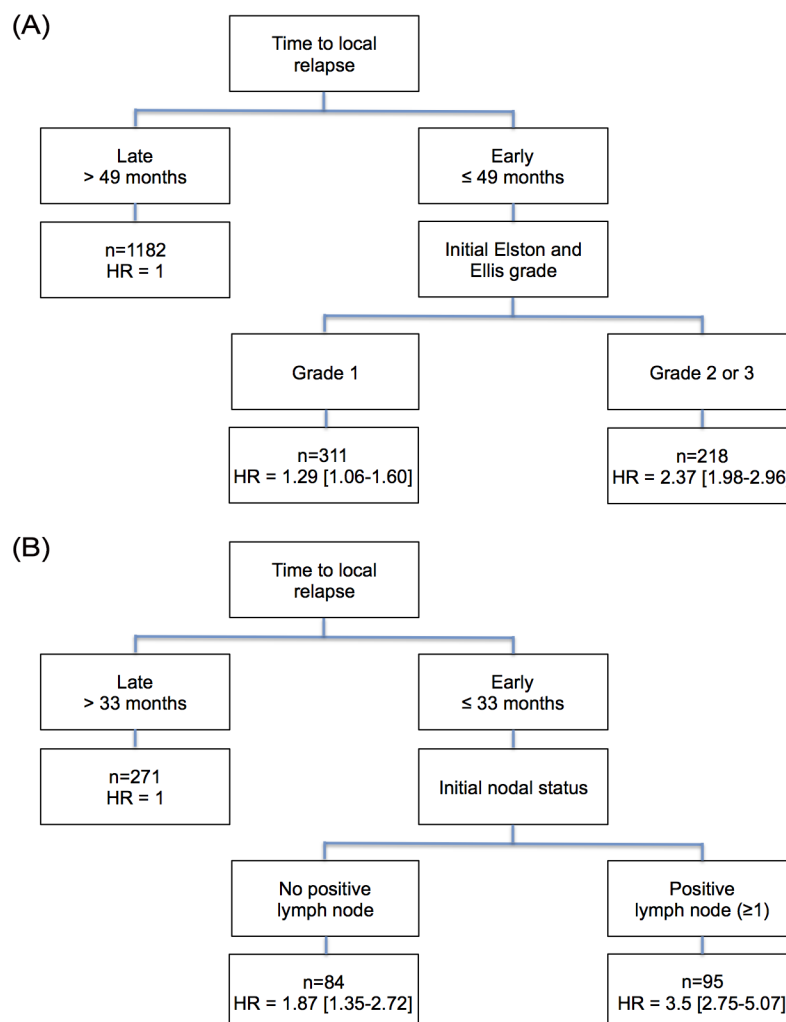


Fig 3. Decision tree algorithm HR = hazard ratio for distant disease at 10 years. (A) Patients with hormone receptor positive tumors. (B) Patients with hormone receptor negative tumors.

doi:10.1371/journal.pone.0159888.g003

true recurrence if it appears within 3cm of the primary cancer and is the same histology [11]. Others publications focused on the clonal stability between the primary cancer and the recurrence. For example, Smith et al. classified tumors as new primitive if the flow cytometry changed from aneuploid to diploid [17]. Based on allele imbalance or loss of heterozygosity, Schlechter et al. investigated whether quantitative DNA fingerprinting could distinguish second primary cancer from true recurrence [39]. However, these classifications based on cancer gene signature [41–45] are still debated and there is a lack of relevant signatures to predict the response to chemotherapy and targeted treatment [46,47]. Oncologists still continue to primarily rely on clinical and pathological characteristics to make decisions.

The main limit of this study is the lack of histologic and therapeutic knowledge of the recurrence. To assess prognostic impact of time to IBTR, systemic therapy after IBTR may be another important factor. All patients had a salvage mastectomy, but data are not available concerning chemotherapy. In addition, we should evaluate the decision tree algorithm to distinguish true recurrence from new primary. But no clinical and pathological characteristics were available concerning the local recurrence except the time of diagnosis. Nevertheless, our

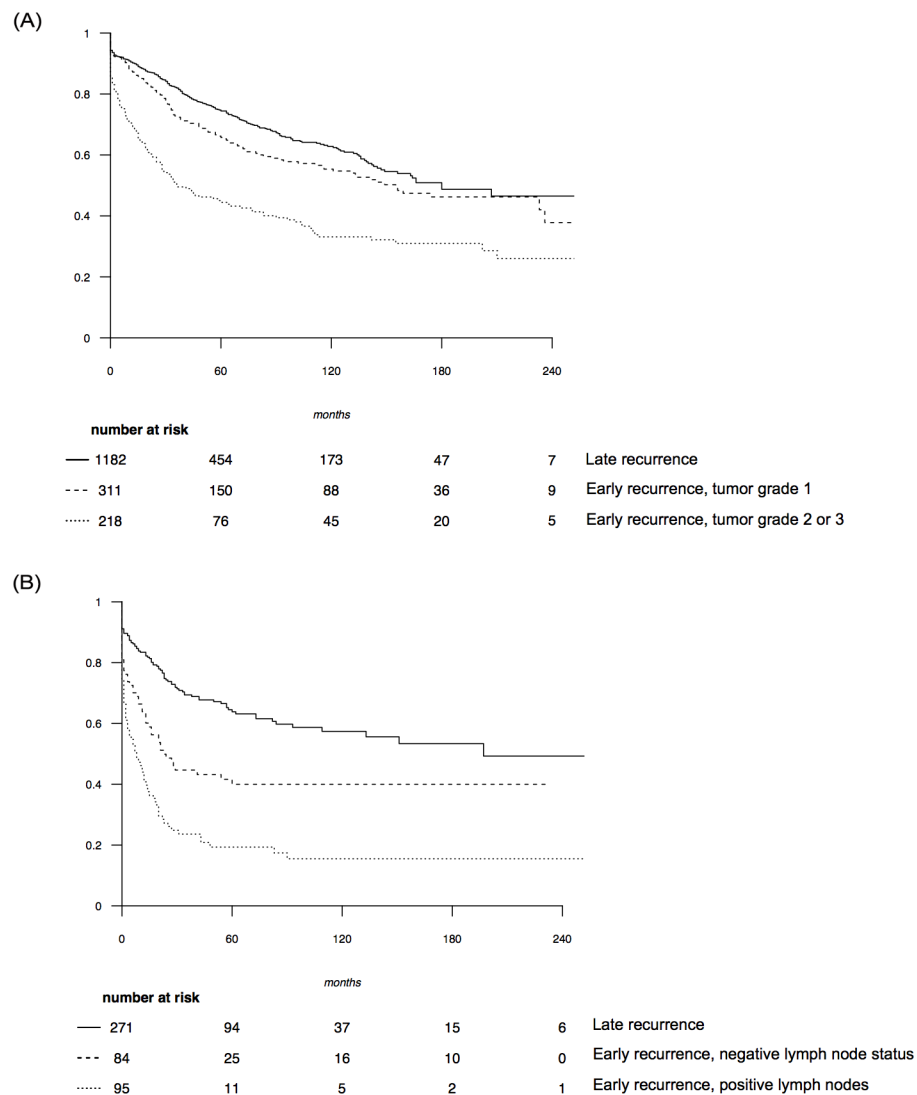


Fig 4. Distant disease free survival curves according prognostic subgroup. (A) Patients with hormone receptor positive tumors. (B) Patients with hormone receptor negative tumors.

doi:10.1371/journal.pone.0159888.g004

data suggests that the time interval between the treatment of primary cancer and IBTR could help to discriminate between true relapse and new primary cancer.

There is no standard management for patients who experience IBTR. Given the poor prognoses of these patients [4,6,9,31,32], new therapeutic strategies must be considered.

Concerning systemic treatment, the benefit of a second chemotherapy has been proven in one randomized trial [32,48,49]: CALOR is a randomized trial comparing adjuvant chemotherapy to simple monitoring for IBTR. The 5 years disease free survival was 69% with chemotherapy versus 57% without chemotherapy (HR 0.59 $p = 0.046$) [49]. The authors concluded that a second line adjuvant chemotherapy should be recommended for IBTR, because occult metastatic disease is present. But the subgroup analysis did not show any effect of chemotherapy in the HR positive group. There is no solid data concerning endocrine therapy. One randomized trial (SAKK23/82) compared tamoxifen versus control for “good prognosis” local relapse after mastectomy [50]. It did not show any difference in overall survival with a median follow-up

Table 3. Prognostic factors for post relapse disease free survival—hormone receptor negative tumors.

Factors	Population	Event	Univariate analysis Hazard Ratio (CI 95%)	p	Multivariate analysis Hazard Ratio (CI 95%)	p
Age at initial diagnosis (years)						
< 40	96	45	1			
40–70	357	179	1.15 [0.83–1.59]	0.4		
>70	18	7	1.06 [0.48–2.36]	0.9		
Initial adjuvant treatment						
Chemotherapy	240	127	1.79 [1.3–2.46]	< 0.001	1.14 [0.74–1.76]	0.6
Endocrine therapy	48	23	1.73 [1.09–2.75]	0.02	1.47 [0.83–2.6]	0.2
Chemo and endocrine therapy	37	27	2.24 [1.38–3.65]	0.001	1.25 [0.66–2.37]	0.5
Tumor size at initial diagnosis						
< or = 2cm	99	32	1		1	
2–5cm	310	168	1.91 [1.31–2.78]	< 0.001	1.39 [0.92–2.09]	0.1
> 5cm	37	21	2.63 [1.52–4.57]	< 0.001	1.43 [0.78–2.61]	0.2
Initial tumor grade						
1	31	9	1			
2	86	37	1.61 [0.78–3.35]	0.2	1.24 [0.47–3.27]	0.7
3	318	173	2.16 [1.11–4.23]	0.02	1.55 [0.62–3.88]	0.3
Positive nodes at initial diagnosis						
0	240	96	1			
1 to 3	106	62	1.61 [1.17–2.21]	0.004	1.39 [0.96–2.01]	0.09
> 3	59	45	2.98 [2.09–4.27]	< 0.001	2.23 [1.49–3.34]	<0.001
Time to IBTR (< or = 33 months versus > 33 months)						
Early	200	137	1		1	
Late	271	94	0.37 [0.29–0.48]	<0.001	0.42 [0.30–0.57]	<0.001

doi:10.1371/journal.pone.0159888.t003

time of 11.6 years. But data lead to believe that the use of adjuvant hormonotherapy in patients with HR-positive IBTR is justified. Patients who experienced recurrence on tamoxifen should be offered treatment with an aromatase inhibitor while patients who have progressed on an aromatase inhibitor may be reconsidered for tamoxifen [51].

Concerning locoregional treatment, the impact on metastatic risk is not demonstrated. Local recurrence is a strong independent predictor factor of distant disease and poor survival [35,52]. Currently, mastectomy is still considered the treatment of choice for IBTR [19,20] because of a high rate (30%) of second local relapse [10,21–25] but impact on distant disease remains unclear. The surgical margin is one of the most important risk factor of local recurrence [53–55]. However, especially thanks to oncoplastic technics, BCS allows large resections and free margin as total mastectomy. Total mastectomy with reconstruction is a therapeutic strategy increasingly used [56,57]. Skin sparing and nipple sparing mastectomies allow good cosmetic outcomes [58,59], but postoperative complications such as infections, necrosis exist. Plus, psychological impact of mastectomy is important, even after immediate reconstruction, and skin or nipple sparing cannot always be guaranteed [60]. Patients treated with BCS for primary cancer have a better body image [61] and there is no psychological or cosmetic advantage of one type of reconstruction over another. Surgery must be adapted to the patient morphology and psychological experience. We believe that second BCS represents a relevant option in

2016. The use of a second BCS was first described in the retrospective study of Kurtz et al. in 1991 [62] with no significant difference in 10 year OS between second BCS and mastectomy. Further conservative procedure was associated with 23% of second local relapse. Thereafter, several authors showed that for patients diagnosed with a local recurrence of less than 2 cm, hormone receptor positive and no lymph node involvement, the long-term prognostic remain good [6,7,9–13]. In such low-risk groups, a high rate of five-year overall survival is observed, between 80 and 90% [10,21–25]. In the retrospective study of Chen et Martinez [21] on 747 patients with IBTR, 179 patients experienced a second lumpectomy and 569 a mastectomy. After univariate analysis, patients undergoing second BCS had worse overall survival (with five-year survival of 67% versus 78% for the BCS and mastectomy groups respectively), but a subgroup analysis in HR positive tumors showed an opposite trend. For patients with a HR positive tumor less than 2cm, without lymph node involvement, the overall survival was 62% after lumpectomy and 57% after salvage mastectomy ($p = 0.09$). Likewise, the meta-analysis of Vila et al. [24] suggested that patients older than 50 years with a small unifocal recurrence ($< 2\text{cm}$) and time to IBTR longer than 48 months could undergo a second BCS. More recently, Lee et al. confirmed that clinical and histological criteria may be more important than the type of surgery regarding prognosis after IBTR [15]. These results are difficult to interpret because these retrospective studies included a small number of patients. Thus, neither selection bias nor lack of statistical power could be excluded. Indeed, patients treated with a second BCS are more likely to have smaller tumors with better prognostic factors than patients who underwent mastectomy. But all together, these data suggest that metastatic risk may be independent of the local treatment. Concerning radiotherapy, no guidelines exist. New emerging radiation techniques could provide effective local control while limiting toxicity of a repeat breast irradiation. Several strategies have been studied such as partial breast irradiation [63] or brachytherapy [64–66]. The RTOG (Radiation Therapy Oncology Group) phase II study of repeat breast preserving surgery and 3D-conformal partial breast re-irradiation is now closed to accrual [67]. Results are pending.

Conclusions

To conclude, a short interval time to IBTR is the strongest factor of poor prognosis. Early isolated breast cancer recurrence is a marker of undetected distant disease. Our decision trees suggest that only few criterions—time between primary cancer and IBTR, hormone status and tumor grade of the primary tumor, initial lymph nodes status—allow to discriminate prognostic subgroups. New therapeutic strategies for IBTR must be considered. Patients with late recurrence and good prognostic factors should be considered as having a local disease. In this group, second breast conserving surgery must be considered. The risk of a second local recurrence is then high, but close to the one after an initial BCS without radiotherapy [3,4]. Based on the literature and our results, it would appear that prognosis of patients after IBTR depends more on clinical and initial histological parameters than on surgical treatment. A prospective trial in a low-risk group of patients to validate the safety of salvage BCS instead of mastectomy in IBTR is therefore needed.

Supporting Information

S1 Fig. Distant disease occurrence according to time after IBTR for each hormone subgroup. Vertical bars represent the number of events. Width of vertical bars stands for 3 months. (A) Patients with hormone receptor positive tumors. (B) Patients with hormone receptor negative tumors.
(PDF)

Author Contributions

Conceived and designed the experiments: ASH FR JGF MG RR.

Performed the experiments: MG MD DM JYP AF.

Analyzed the data: MG ASH FR JGF.

Contributed reagents/materials/analysis tools: MD DM JYP ML AF RR.

Wrote the paper: MG ASH PM FR JGF.

Proofreading the English text: PM.

References

- Veronesi U (1977) Conservative treatment of breast cancer: a trial in progress at the Cancer Institute of Milan. *World J Surg* 1: 324–326. PMID: [883331](#)
- Veronesi U, Saccozzi R, Del Vecchio M, Banfi A, Clemente C, et al. (1981) Comparing radical mastectomy with quadrantectomy, axillary dissection, and radiotherapy in patients with small cancers of the breast. *N Engl J Med* 305: 6–11. PMID: [7015141](#)
- Veronesi U, Cascinelli N, Mariani L, Greco M, Saccozzi R, et al. (2002) Twenty-year follow-up of a randomized study comparing breast-conserving surgery with radical mastectomy for early breast cancer. *N Engl J Med* 347: 1227–1232. PMID: [12393819](#)
- Fisher B, Anderson S, Bryant J, Margolese RG, Deutsch M, et al. (2002) Twenty-year follow-up of a randomized trial comparing total mastectomy, lumpectomy, and lumpectomy plus irradiation for the treatment of invasive breast cancer. *N Engl J Med* 347: 1233–1241. PMID: [12393820](#)
- Clarke M, Collins R, Darby S, Davies C, Elphinstone P, et al. (2005) Effects of radiotherapy and of differences in the extent of surgery for early breast cancer on local recurrence and 15-year survival: an overview of the randomised trials. *Lancet* 366: 2087–2106. PMID: [16360786](#)
- Wapnir IL, Anderson SJ, Mamounas EP, Geyer CE Jr, Jeong JH, et al. (2006) Prognosis after ipsilateral breast tumor recurrence and locoregional recurrences in five National Surgical Adjuvant Breast and Bowel Project node-positive adjuvant breast cancer trials. *J Clin Oncol* 24: 2028–2037. PMID: [16648502](#)
- Bouganin N, Tsvetkova E, Clemons M, Amir E (2013) Evolution of sites of recurrence after early breast cancer over the last 20 years: implications for patient care and future research. *Breast Cancer Res Treat* 139: 603–606. doi: [10.1007/s10549-013-2561-7](#) PMID: [23681402](#)
- Sanghani M, Truong PT, Raad RA, Niemierko A, Lesperance M, et al. (2010) Validation of a web-based predictive nomogram for ipsilateral breast tumor recurrence after breast conserving therapy. *J Clin Oncol* 28: 718–722. doi: [10.1200/JCO.2009.22.6662](#) PMID: [20048188](#)
- Anderson SJ, Wapnir I, Dignam JJ, Fisher B, Mamounas EP, et al. (2009) Prognosis after ipsilateral breast tumor recurrence and locoregional recurrences in patients treated by breast-conserving therapy in five National Surgical Adjuvant Breast and Bowel Project protocols of node-negative breast cancer. *J Clin Oncol* 27: 2466–2473. doi: [10.1200/JCO.2008.19.8424](#) PMID: [19349544](#)
- Fodor J, Major T, Polgar C, Orosz Z, Sulyok Z, et al. (2008) Prognosis of patients with local recurrence after mastectomy or conservative surgery for early-stage invasive breast cancer. *Breast* 17: 302–308. PMID: [18082403](#)
- Huang E, Buchholz TA, Meric F, Krishnamurthy S, Mirza NQ, et al. (2002) Classifying local disease recurrences after breast conservation therapy based on location and histology: new primary tumors have more favorable outcomes than true local disease recurrences. *Cancer* 95: 2059–2067. PMID: [12412158](#)
- Komoike Y, Akiyama F, Iino Y, Ikeda T, Tanaka-Akashi S, et al. (2005) Analysis of ipsilateral breast tumor recurrences after breast-conserving treatment based on the classification of true recurrences and new primary tumors. *Breast Cancer* 12: 104–111. PMID: [15858440](#)
- Nishimura S, Takahashi K, Akiyama F, Oguchi M, Tada K, et al. (2005) Classification of ipsilateral breast tumor recurrence after breast-conserving therapy: new primary cancer allows a good prognosis. *Breast Cancer* 12: 112–117. PMID: [15858441](#)
- Melvin JC, Purushotham AD, Garmo H, Pinder SE, Fentiman IS, et al. (2016) Progression of breast cancer following locoregional ipsilateral recurrence: importance of interval time. *Br J Cancer* 114: 88–95. doi: [10.1038/bjc.2015.314](#) PMID: [26657655](#)

15. Lee JH, Lee SK, Park SM, Ryu JM, Paik HJ, et al. (2015) Independent Prognostic Factors for Overall Survival after Salvage Operation for Ipsilateral Breast Tumor Recurrence Following Breast-Conserving Surgery. *J Breast Cancer* 18: 386–393. doi: [10.4048/jbc.2015.18.4.386](https://doi.org/10.4048/jbc.2015.18.4.386) PMID: [26770246](https://pubmed.ncbi.nlm.nih.gov/26770246/)
16. Panet-Raymond V, Truong PT, McDonald RE, Alexander C, Ross L, et al. (2011) True recurrence versus new primary: an analysis of ipsilateral breast tumor recurrences after breast-conserving therapy. *Int J Radiat Oncol Biol Phys* 81: 409–417. doi: [10.1016/j.ijrobp.2010.05.063](https://doi.org/10.1016/j.ijrobp.2010.05.063) PMID: [21288654](https://pubmed.ncbi.nlm.nih.gov/21288654/)
17. Smith TE, Lee D, Turner BC, Carter D, Haffty BG (2000) True recurrence vs. new primary ipsilateral breast tumor relapse: an analysis of clinical and pathologic differences and their implications in natural history, prognoses, and therapeutic management. *Int J Radiat Oncol Biol Phys* 48: 1281–1289. PMID: [11121624](https://pubmed.ncbi.nlm.nih.gov/11121624/)
18. Veronesi U, Marubini E, Del Vecchio M, Manzari A, Andreola S, et al. (1995) Local recurrences and distant metastases after conservative breast cancer treatments: partly independent events. *J Natl Cancer Inst* 87: 19–27. PMID: [7666458](https://pubmed.ncbi.nlm.nih.gov/7666458/)
19. (2013) NCCN Guidelines(R) Updates. *J Natl Compr Canc Netw* 11: xxxii–xxxvi. PMID: [24029131](https://pubmed.ncbi.nlm.nih.gov/24029131/)
20. Roussy ICI (2011) REMAGUS.
21. Chen SL, Martinez SR (2008) The survival impact of the choice of surgical procedure after ipsilateral breast cancer recurrence. *Am J Surg* 196: 495–499. doi: [10.1016/j.amjsurg.2008.06.018](https://doi.org/10.1016/j.amjsurg.2008.06.018) PMID: [18809050](https://pubmed.ncbi.nlm.nih.gov/18809050/)
22. Ansink AC, Krul MR, De Weger RA, Kleyne JA, Pijpers H, et al. (1994) Human papillomavirus, lichen sclerosis, and squamous cell carcinoma of the vulva: detection and prognostic significance. *Gynecol Oncol* 52: 180–184. PMID: [8314136](https://pubmed.ncbi.nlm.nih.gov/8314136/)
23. Gentilini O, Botteri E, Veronesi P, Sangalli C, Del Castillo A, et al. (2012) Repeating conservative surgery after ipsilateral breast tumor reappearance: criteria for selecting the best candidates. *Ann Surg Oncol* 19: 3771–3776. doi: [10.1245/s10434-012-2404-5](https://doi.org/10.1245/s10434-012-2404-5) PMID: [22618719](https://pubmed.ncbi.nlm.nih.gov/22618719/)
24. Vila J, Garcia-Etienne CA, Vavassori A, Gentilini O (2014) Conservative surgery for ipsilateral breast tumor recurrence. *J Surg Oncol*.
25. Alpert TE, Kuerer HM, Arthur DW, Lannin DR, Haffty BG (2005) Ipsilateral breast tumor recurrence after breast conservation therapy: outcomes of salvage mastectomy vs. salvage breast-conserving surgery and prognostic factors for salvage breast preservation. *Int J Radiat Oncol Biol Phys* 63: 845–851. PMID: [16199315](https://pubmed.ncbi.nlm.nih.gov/16199315/)
26. Ishitobi M, Komoike Y, Nakahara S, Motomura K, Koyama H, et al. (2011) Repeat lumpectomy for ipsilateral breast tumor recurrence after breast-conserving treatment. *Oncology* 81: 381–386. doi: [10.1159/000335265](https://doi.org/10.1159/000335265) PMID: [22269927](https://pubmed.ncbi.nlm.nih.gov/22269927/)
27. Komoike Y, Motomura K, Inaji H, Kasugai T, Koyama H (2003) Repeat lumpectomy for patients with ipsilateral breast tumor recurrence after breast-conserving surgery. Preliminary results. *Oncology* 64: 1–6. PMID: [12457024](https://pubmed.ncbi.nlm.nih.gov/12457024/)
28. Galper S, Blood E, Gelman R, Abner A, Recht A, et al. (2005) Prognosis after local recurrence after conservative surgery and radiation for early-stage breast cancer. *Int J Radiat Oncol Biol Phys* 61: 348–357. PMID: [15667952](https://pubmed.ncbi.nlm.nih.gov/15667952/)
29. Contal C, OQJ (1999) An application of changepoint methods in studying the effect of age on survival in breast cancer. *Computational statistics and data analysis* 30: 253–270.
30. Kim HJ, Ahn SG, Lee HM, Park JT, Han K, et al. (2015) Metastasis-Free Interval Is Closely Related to Tumor Characteristics and Has Prognostic Value in Breast Cancer Patients with Distant Relapse. *J Breast Cancer* 18: 371–377. doi: [10.4048/jbc.2015.18.4.371](https://doi.org/10.4048/jbc.2015.18.4.371) PMID: [26770244](https://pubmed.ncbi.nlm.nih.gov/26770244/)
31. Clemons M, Danson S, Hamilton T, Goss P (2001) Locoregionally recurrent breast cancer: incidence, risk factors and survival. *Cancer Treat Rev* 27: 67–82. PMID: [11319846](https://pubmed.ncbi.nlm.nih.gov/11319846/)
32. Wapnir IL, Aebi S, Geyer CE, Zahrieh D, Gelber RD, et al. (2008) A randomized clinical trial of adjuvant chemotherapy for radically resected locoregional relapse of breast cancer: IBCSG 27–02, BIG 1–02, and NSABP B-37. *Clin Breast Cancer* 8: 287–292. doi: [10.3816/CBC.2008.n.035](https://doi.org/10.3816/CBC.2008.n.035) PMID: [18650162](https://pubmed.ncbi.nlm.nih.gov/18650162/)
33. Taghian A, Jeong JH, Mamounas E, Anderson S, Bryant J, et al. (2004) Patterns of locoregional failure in patients with operable breast cancer treated by mastectomy and adjuvant chemotherapy with or without tamoxifen and without radiotherapy: results from five National Surgical Adjuvant Breast and Bowel Project randomized clinical trials. *J Clin Oncol* 22: 4247–4254. PMID: [15452182](https://pubmed.ncbi.nlm.nih.gov/15452182/)
34. Vicini FA, Antonucci JV, Goldstein N, Wallace M, Kestin L, et al. (2007) The use of molecular assays to establish definitively the clonality of ipsilateral breast tumor recurrences and patterns of in-breast failure in patients with early-stage breast cancer treated with breast-conserving therapy. *Cancer* 109: 1264–1272. PMID: [17372920](https://pubmed.ncbi.nlm.nih.gov/17372920/)
35. Fisher B, Anderson S, Fisher ER, Redmond C, Wickerham DL, et al. (1991) Significance of ipsilateral breast tumour recurrence after lumpectomy. *Lancet* 338: 327–331. PMID: [1677695](https://pubmed.ncbi.nlm.nih.gov/1677695/)

36. van der Sangen MJ, van de Poll-Franse LV, Roumen RM, Rutten HJ, Coebergh JW, et al. (2006) The prognosis of patients with local recurrence more than five years after breast conservation therapy for invasive breast carcinoma. *Eur J Surg Oncol* 32: 34–38. PMID: [16305821](#)
37. Nottage MK, Kopciuk KA, Tzontcheva A, Andrulis IL, Bull SB, et al. (2006) Analysis of incidence and prognostic factors for ipsilateral breast tumour recurrence and its impact on disease-specific survival of women with node-negative breast cancer: a prospective cohort study. *Breast Cancer Res* 8: R44. PMID: [16859523](#)
38. Nimeus-Malmstrom E, Krogh M, Malmstrom P, Strand C, Fredriksson I, et al. (2008) Gene expression profiling in primary breast cancer distinguishes patients developing local recurrence after breast-conservation surgery, with or without postoperative radiotherapy. *Breast Cancer Res* 10: R34. doi: [10.1186/bcr1997](#) PMID: [18430221](#)
39. Schlechter BL, Yang Q, Larson PS, Golubeva A, Blanchard RA, et al. (2004) Quantitative DNA fingerprinting may distinguish new primary breast cancer from disease recurrence. *J Clin Oncol* 22: 1830–1838. PMID: [15143075](#)
40. Yi M, Buchholz TA, Meric-Bernstam F, Bedrosian I, Hwang RF, et al. (2011) Classification of ipsilateral breast tumor recurrences after breast conservation therapy can predict patient prognosis and facilitate treatment planning. *Ann Surg* 253: 572–579. doi: [10.1097/SLA.0b013e318208fc2a](#) PMID: [21209588](#)
41. Perou CM, Sorlie T, Eisen MB, van de Rijn M, Jeffrey SS, et al. (2000) Molecular portraits of human breast tumours. *Nature* 406: 747–752. PMID: [10963602](#)
42. Sorlie T, Perou CM, Tibshirani R, Aas T, Geisler S, et al. (2001) Gene expression patterns of breast carcinomas distinguish tumor subclasses with clinical implications. *Proc Natl Acad Sci U S A* 98: 10869–10874. PMID: [11553815](#)
43. Cheng SH, Horng CF, West M, Huang E, Pittman J, et al. (2006) Genomic prediction of locoregional recurrence after mastectomy in breast cancer. *J Clin Oncol* 24: 4594–4602. PMID: [17008701](#)
44. Moarii M, Pinheiro A, Sigal-Zafrani B, Fourquet A, Caly M, et al. (2014) Epigenomic alterations in breast carcinoma from primary tumor to locoregional recurrences. *PLoS One* 9: e103986. doi: [10.1371/journal.pone.0103986](#) PMID: [25098247](#)
45. Nuyten DS, Kreike B, Hart AA, Chi JT, Sneddon JB, et al. (2006) Predicting a local recurrence after breast-conserving therapy by gene expression profiling. *Breast Cancer Res* 8: R62. PMID: [17069664](#)
46. Weigelt B, Pusztai L, Ashworth A, Reis-Filho JS (2012) Challenges translating breast cancer gene signatures into the clinic. *Nat Rev Clin Oncol* 9: 58–64.
47. Prat A, Ellis MJ, Perou CM (2012) Practical implications of gene-expression-based assays for breast oncologists. *Nat Rev Clin Oncol* 9: 48–57.
48. Wapnir IL, Aebi S, Gelber S, Anderson SJ, Lang I, et al. (2008) Progress on BIG 1-02/IBCSG 27-02/NSABP B-37, a prospective randomized trial evaluating chemotherapy after local therapy for isolated locoregional recurrences of breast cancer. *Ann Surg Oncol* 15: 3227–3231. doi: [10.1245/s10434-008-0129-2](#) PMID: [18784962](#)
49. Aebi S, Gelber S, Anderson SJ, Lang I, Robidoux A, et al. (2014) Chemotherapy for isolated locoregional recurrence of breast cancer (CALOR): a randomised trial. *Lancet Oncol* 15: 156–163. doi: [10.1016/S1470-2045\(13\)70589-8](#) PMID: [24439313](#)
50. Waeber M, Castiglione-Gertsch M, Dietrich D, Thurlimann B, Goldhirsch A, et al. (2003) Adjuvant therapy after excision and radiation of isolated postmastectomy locoregional breast cancer recurrence: definitive results of a phase III randomized trial (SAKK 23/82) comparing tamoxifen with observation. *Ann Oncol* 14: 1215–1221. PMID: [12881382](#)
51. Ishitobi M, Nakahara S, Komoike Y, Motomura K, Koyama H, et al. (2011) Risk of Ipsilateral breast tumor recurrence in patients treated with Tamoxifen or Anastrozole following breast-conserving surgery with or without radiotherapy. *Anticancer Res* 31: 367–371. PMID: [21273625](#)
52. Kurtz JM, Amalric R, Brandone H, Ayme Y, Jacquemier J, et al. (1989) Local recurrence after breast-conserving surgery and radiotherapy. Frequency, time course, and prognosis. *Cancer* 63: 1912–1917. PMID: [2702564](#)
53. Houssami N, Macaskill P, Marinovich ML, Dixon JM, Irwig L, et al. (2010) Meta-analysis of the impact of surgical margins on local recurrence in women with early-stage invasive breast cancer treated with breast-conserving therapy. *Eur J Cancer* 46: 3219–3232. doi: [10.1016/j.ejca.2010.07.043](#) PMID: [20817513](#)
54. Park CC, Mitsumori M, Nixon A, Recht A, Connolly J, et al. (2000) Outcome at 8 years after breast-conserving surgery and radiation therapy for invasive breast cancer: influence of margin status and systemic therapy on local recurrence. *J Clin Oncol* 18: 1668–1675. PMID: [10764427](#)

55. Gage I, Schnitt SJ, Nixon AJ, Silver B, Recht A, et al. (1996) Pathologic margin involvement and the risk of recurrence in patients treated with breast-conserving therapy. *Cancer* 78: 1921–1928. PMID: [8909312](#)
56. Dragun AE, Pan J, Riley EC, Kruse B, Wilson MR, et al. (2013) Increasing use of elective mastectomy and contralateral prophylactic surgery among breast conservation candidates: a 14-year report from a comprehensive cancer center. *Am J Clin Oncol* 36: 375–380. doi: [10.1097/COC.0b013e318248da47](#) PMID: [22643566](#)
57. Kummerow KL, Du L, Penson DF, Shyr Y, Hooks MA (2015) Nationwide trends in mastectomy for early-stage breast cancer. *JAMA Surg* 150: 9–16. doi: [10.1001/jamasurg.2014.2895](#) PMID: [25408966](#)
58. Toth BA, Lappert P (1991) Modified skin incisions for mastectomy: the need for plastic surgical input in preoperative planning. *Plast Reconstr Surg* 87: 1048–1053. PMID: [1852020](#)
59. Murthy V, Chamberlain RS (2013) Defining a place for nipple sparing mastectomy in modern breast care: an evidence based review. *Breast J* 19: 571–581. doi: [10.1111/j.1524-4741.2011.01220.x](#) PMID: [22284266](#)
60. Nicholson RM, Leinster S, Sassoon EM (2007) A comparison of the cosmetic and psychological outcome of breast reconstruction, breast conserving surgery and mastectomy without reconstruction. *Breast* 16: 396–410. PMID: [17368026](#)
61. Spatuzzi R, Vespa A, Lorenzi P, Miccinesi G, Ricciuti M, et al. (2016) Evaluation of Social Support, Quality of Life, and Body Image in Women with Breast Cancer. *Breast Care (Basel)* 11: 28–32.
62. Kurtz JM, Jacquemier J, Amalric R, Brandone H, Ayme Y, et al. (1991) Is breast conservation after local recurrence feasible? *Eur J Cancer* 27: 240–244. PMID: [1827303](#)
63. Kuerer HM, Arthur DW, Haffty BG (2004) Repeat breast-conserving surgery for in-breast local breast carcinoma recurrence: the potential role of partial breast irradiation. *Cancer* 100: 2269–2280. PMID: [15160329](#)
64. Chadha M, Feldman S, Boolbol S, Wang L, Harrison LB (2008) The feasibility of a second lumpectomy and breast brachytherapy for localized cancer in a breast previously treated with lumpectomy and radiation therapy for breast cancer. *Brachytherapy* 7: 22–28. doi: [10.1016/j.brachy.2007.10.006](#) PMID: [18299110](#)
65. Hannoun-Levi JM, Houvenaeghel G, Ellis S, Teissier E, Alzieu C, et al. (2004) Partial breast irradiation as second conservative treatment for local breast cancer recurrence. *Int J Radiat Oncol Biol Phys* 60: 1385–1392. PMID: [15590169](#)
66. Trombetta M, Julian T, Bhandari T, Werts ED, Miften M, et al. (2008) Breast conservation surgery and interstitial brachytherapy in the management of locally recurrent carcinoma of the breast: the Allegheny General Hospital experience. *Brachytherapy* 7: 29–36. doi: [10.1016/j.brachy.2007.12.001](#) PMID: [18201940](#)
67. (RTOG-1014) RTOG A phase II study of repeat breast preserving surgery and 3D-conformal partial breast irradiation for local recurrence of breast carcinoma. NRG Oncology NCT01082211.