

Figure 2A. Sputum gene expression of ACE2 (angiotensin-converting enzyme 2) and TMPRSS2 (transmembrane protease serine 2) is strongly correlated in healthy participants. Best fit line was fitted using a cubic smoothing spline.

Author disclosures are available with the text of this article at www.atsjournals.org.

Michael C. Peters, M.D.
John V. Fahy, M.D., M.Sc.
University of California San Francisco
San Francisco, California

On behalf of all the authors

Reference

1. Peters MC, Sajuthi S, Deford P, Christenson S, Rios CL, Montgomery MT, Woodruff PG, Mauger DT, Erzurum SC, Johansson MW, Denlinger LC, Jarjour NN, Castro M, Hastie AT, Moore W, Ortega VE,

Bleecker ER, Wenzel SE, Israel E, Levy BD, Seibold MA; NHLBI Severe Asthma Research Program-3 Investigators. COVID-19-related genes in sputum cells in asthma: relationship to demographic features and corticosteroids. *Am J Respir Crit Care Med* 2020;202:83–90.

Copyright © 2020 by the American Thoracic Society



Erratum: A Chronic Obstructive Pulmonary Disease Susceptibility Gene, *FAM13A*, Regulates Protein Stability of β -Catenin

The *Journal* has been alerted to errors in two figures in the article by Jiang and colleagues (1), published in the July 15, 2016, issue.

In Figure 1A, an incorrect image was used for the lower left panel (Rb IgG, Goat IgG). In addition, the panels in the bottom row included scale bars that were incorrectly labeled; these should be 20 μ m instead of 40 μ m. A corrected version of the figure is included here.

In Figure E9B in the online supplement to the article, a duplicate image of the lower right panel (*Fam13a*^{−/−}, PKF118–310) was inadvertently used for the lower left panel (*Fam13a*^{+/+}, PKF118–310). A revised version of Figure E9B is included here that includes the correct version of the lower left panel.

The authors apologize to the *Journal's* readers for any confusion caused by these errors. ■

Reference

1. Jiang Z, Lao T, Qiu W, Polverino F, Gupta K, Guo F, Mancini JD, Naing ZZ, Cho MH, Castaldi PJ, Sun Y, Yu J, Lacho-Contreras ME, Kobzik L, Raby BA, Choi AM, Perrella MA, Owen CA, Silverman EK, Zhou X. A chronic obstructive pulmonary disease susceptibility gene, *FAM13A*, regulates protein stability of β -catenin. *Am J Respir Crit Care Med* 2016;194:185–197.

Copyright © 2020 by the American Thoracic Society

Ⓓ This article is open access and distributed under the terms of the Creative Commons Attribution Non-Commercial No Derivatives License 4.0 (<http://creativecommons.org/licenses/by-nc-nd/4.0/>). For commercial usage and reprints, please contact Diane Gern (dgern@thoracic.org).

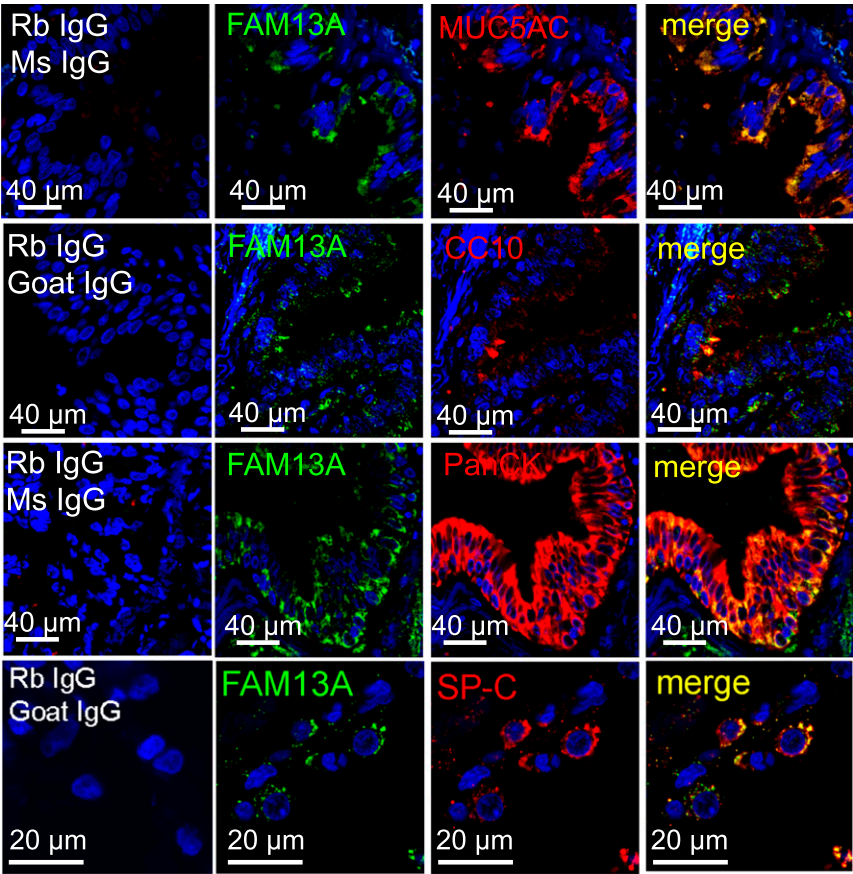


Figure 1A [revised].

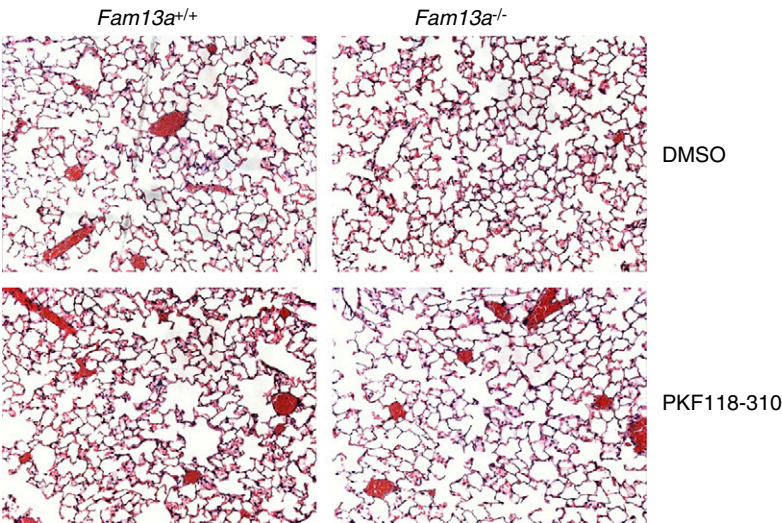


Figure E9B [revised].