

# Patterns of environmental variance across environments and traits in domestic cattle

Mads F. Schou<sup>1,2</sup>  | Torsten N. Kristensen<sup>1</sup>  | Ary A. Hoffmann<sup>3</sup> 

<sup>1</sup>Department of Chemistry and Bioscience, Aalborg University, Aalborg East, Denmark

<sup>2</sup>Department of Biology, Lund University, Lund, Sweden

<sup>3</sup>School of BioSciences, Bio21 Institute, The University of Melbourne, Melbourne, VIC, Australia

## Correspondence

Mads F. Schou, Department of Biology, Lund University, Lund SE-22362, Sweden.  
Email: mads.schou@biol.lu.se.

## Abstract

The variance in phenotypic trait values is a product of environmental and genetic variation. The sensitivity of traits to environmental variation has a genetic component and is likely to be under selection. However, there are few studies investigating the evolution of this sensitivity, in part due to the challenges of estimating the environmental variance. The livestock literature provides a wealth of studies that accurately partition components of phenotypic variance, including the environmental variance, in well-defined environments. These studies involve breeds that have been under strong selection on mean phenotype in optimal environments for many generations, and therefore represent an opportunity to study the potential evolution of trait sensitivity to environmental conditions. Here, we use literature on domestic cattle to examine the evolution of micro-environmental variance ( $CV_R$ —the coefficient of residual variance) by testing for differences in expression of  $CV_R$  in animals from the same breed reared in different environments. Traits that have been under strong selection did not follow a null expectation of an increase in  $CV_R$  in heterogeneous environments (e.g., grazing), a pattern that may reflect evolution of increased uniformity in heterogeneous environments. When comparing  $CV_R$  across environments of different levels of optimality, here measured by trait mean, we found a reduction in  $CV_R$  in the more optimal environments for both life history and growth traits. Selection aimed at increasing trait means in livestock breeds typically occurs in the more optimal environments, and we therefore suspect that the decreased  $CV_R$  is a consequence of evolution of the expression of micro-environmental variance in this environment. Our results highlight the heterogeneity in micro-environmental variance across environments and point to possible connections to the intensity of selection on trait means.

## KEYWORDS

cattle, directional selection, environmental variance, evolution, selection intensity, stabilizing selection

This is an open access article under the terms of the Creative Commons Attribution License, which permits use, distribution and reproduction in any medium, provided the original work is properly cited.

© 2020 The Authors. *Evolutionary Applications* published by John Wiley & Sons Ltd

## 1 | INTRODUCTION

The micro-environmental variance ( $V_e$ ) reflects the extent to which individuals living in a similar environment differ phenotypically due to small ("micro") differences that they encounter within that environment (Falconer & Mackay, 1996; Lynch & Walsh, 1998).  $V_e$  is expected to be low in stable environments and increase as environments become more variable. In the laboratory, environmental conditions can be controlled and kept constant, minimizing chances that individuals experience micro-environmental variation. Likewise, many animal and plant agricultural production units provide uniform environmental conditions in terms of factors such as temperature and access to similar food sources/nutrients throughout production life. In agroecosystems, environmental conditions are typically tuned to optimize production, but not necessarily fitness, and in such systems, uniformity in the product is typically economically advantageous. In evolutionary terms, this can be translated into an advantage of minimizing  $V_e$  (increasing uniformity within a defined environment) and potentially also the macro-environmental variation ( $V_E$ ) occurring among defined environments such as different climatic regions (Hill & Mulder, 2010; Mulder, Bijma, & Hill, 2008).

There is limited information about mechanisms controlling sensitivity to micro-environmental variation, but it appears to be trait-specific and under some degree of genetic control (Hill & Mulder, 2010) and may therefore be influenced by selection (Bruijning, Metcalf, Jongejans, & Ayroles, 2020). When Hill and Mulder (2010) reviewed body weight and litter traits from (predominantly) mice, rabbits and livestock, they found evidence for heritable variation of  $V_e$  in most studies, but narrow sense heritabilities were low: in the range 0.00–0.05. More recently, a study on great tits (*Parus major*) provided evidence for genetic variance underlying  $V_e$  for fledging weight, likely maintained by selection for increased trait mean as it correlates with clutch size (Mulder, Gienapp, & Visser, 2016). Another selection experiment on the variance in litter size in rabbits also found evidence of heritable variation of  $V_e$  (Blasco, Martínez-Álvarez, García, Ibáñez-Escriche, & Argente, 2017). Studies on *Drosophila melanogaster* comparing genetically homogeneous lines or subpopulations have reported high broad-sense heritabilities of micro-environmental variance in four environmental stress tolerance traits (Morgante, Sørensen, Sorensen, Maltecca, & Mackay, 2015; Ørsted, Rohde, Hoffmann, Sørensen, & Kristensen, 2018; Sørensen, de los Campos, Morgante, Mackay, & Sorensen, 2015) and sleep traits (Harbison, McCoy, & Mackay, 2013). Overall, this suggests an evolutionary capacity to change the magnitude of phenotypic responses to a given micro-environmental change, for example by increasing the micro-environmental canalization to reduce  $V_e$  for fitness traits.

This emerging empirical evidence fits with the notion that  $V_e$  is exposed to and shaped by evolutionary forces (Bull, 1987; Gavrilets & Hastings, 1994; Slatkin & Lande, 1976), although the direction of evolutionary change expected in  $V_e$  is not entirely clear. Under relaxed selection on the mean,  $V_e$  is expected due to a cost of producing homogenous phenotypes (Lerner, 1954). Reviews of empirical selection gradients on the mean in natural populations have

shown weak directional selection to be common (Blows & Brooks, 2003; Kingsolver, Diamond, Siepielski, & Carlson, 2012; Kingsolver et al., 2001). But many traits with a close connection to fitness are under strong stabilizing selection on the mean (for recent examples, see González Marín, Olave, Avila, Sites, & Morando, 2018; Sanjak, Sidorenko, Robinson, Thornton, & Visscher, 2018; Soulsbury, Siitari, & Lebigre, 2018). When stabilizing selection on the mean is strong and the trait mean approaches the optimum, genotypes increasing  $V_e$  will be at a disadvantage as they are likely to produce a nonoptimal phenotype (Bull, 1987; Gavrilets & Hastings, 1994; Slatkin & Lande, 1976). Hence, stabilizing selection on a trait's mean will cause correlated selection on  $V_e$ , because  $V_e$  affects the probability of expressing an optimal trait value, and the closer to the optimal trait value the stronger the correlated selection for a reduced  $V_e$ . Traits not directly linked to fitness may therefore have higher levels of  $V_e$ . An increased  $V_e$  can also be the case for traits under strong directional selection, either as an indirect effect as the variance typically scales with a trait's mean (Falconer & Mackay, 1996), or as a direct effect because of selection for a higher mean (Hill & Zhang, 2004; Mulder, Bijma, & Hill, 2007). In the latter case, directional selection for an increased trait mean may also increase  $V_e$  scaled by the mean ( $CV_e$ , coefficient of environmental variance) (Hill & Mulder, 2010).

When characterizing patterns of  $CV_e$  across environments, changes will reflect changes in  $V_e$  driven by environmental change or evolution, and not simply a correlated response to a change in trait mean. Hence, if a trait shows a reduction in  $CV_e$  in environments where selection on a trait's mean has been strong (a more optimal environment) compared to in environments where selection has been more relaxed (less optimal environment), we may expect this to be due to stabilizing or directional selection on a trait's mean. The expected magnitude of this reduction will depend on the environments compared, with a bigger reduction in  $CV_e$  when there is a large increase in optimality, and therefore a large increase in selection, from one environment to the other. However, strong directional selection might also lead to an increase in  $V_e$ , because individuals with large  $V_e$  can produce the extreme phenotypes favoured by selection (Hill & Zhang, 2004; Mulder et al., 2007), whereby  $CV_e$  would show an increase in environments where selection on a trait's mean has been strong. These expectations also apply in the case when the environment of strong selection is heterogeneous, with the requirement that the same phenotype is optimal across environments (Gillespie & Turelli, 1989).

We have limited understanding of how selection aimed at increasing the trait mean affects  $V_e$  across environments, and if such selection can reduce the effects of environmental heterogeneity (Bruijning et al., 2020). This is partly because most quantitative genetic studies performed on natural populations only report estimates of heritability and only in very rare cases estimates of genotype–environment interactions for  $V_e$ . When estimates of  $V_e$  are presented, they tend to have large confidence intervals due to low sample sizes. Estimates often lack clearly defined environmental contexts, limiting the ability to compare different sets of traits across studies. However, by focussing on livestock data, some of

these problems are circumvented. Livestock studies are usually based on sample sizes an order of magnitude or more than those available from studies on natural populations (e.g., Carabano, Wade, & Vleck, 1990; Jamrozik, Schaeffer, & Weigel, 2002). Moreover, environments are typically highly controlled and well defined, and directly linked to mean values of production traits, limiting some of the complications that arise when considering selection in natural environments (Hunter, Pemberton, Pilkington, & Morrissey, 2018).

Here, we survey livestock literature on domestic cattle to examine patterns for  $V_e$  associated with different levels of selection and environmental variability.  $V_e$  can be approximated by residual variance ( $V_R$ ) estimates provided in the literature, but as the variance scales with the mean in most biological traits we here use the coefficient of residual variance ( $CV_R$ , which is similar to  $CV_e$ ). Based on these data, we ask the following questions: (a) Does environmental heterogeneity increase trait  $CV_R$  or decrease it on the assumption that strong stabilizing selection on trait means buffer phenotypic heterogeneity in the environment? (b) Is there a consistent difference in  $CV_R$  in more optimal environments compared to less optimal environments for traits that are expected to have been under past stabilizing versus directional selection? and (c) Is there an association between  $CV_R$  and  $CV_E$  ( $V_E$  scaled by the trait mean) across traits, as might be expected if environmental variance components for different traits are influenced by the same processes (Debat & David, 2001)?

## 2 | MATERIALS AND METHODS

### 2.1 | The survey

In the livestock literature, studies of genotype by environment interactions typically consist of quantitative genetic analyses of traits across several well-defined environments, providing useful estimates of  $V_e$  (i.e.,  $V_R$ ) from each of these environments. Genotype-by-environment interactions are often assessed using the genetic correlation of a trait between two environments (Falconer, 1990). We undertook a literature survey with the search terms "environments" AND "genetic correlation\*" AND "cattle" (assessed: 15/09/17) on the Web of Science Core Selection ([www.webofknowledge.com](http://www.webofknowledge.com)). To identify useful papers with high-quality data, we set up the following strict criteria for a study to be added to our database: (a) the study comprises at least two different environments enabling direct comparison within study system; (b) the environments are clearly defined by geography, abiotic conditions or rearing conditions, allowing an assessment of the level of environmental quality (see below); (c) the study provides  $V_R$  or, if  $V_R$  is not provided, parameters necessary for estimation of  $V_R$  ( $h^2$ ,  $V_A$ ,  $V_p$ ); and (d) the paper provides mean trait values for each environment, allowing scaling of  $V_e$ . Studies where environments were solely defined by the grouping of herds according to differences in mean trait values of another trait than that of interest (typically

milk yield is used) were not considered. The reference lists of the identified papers were used to identify additional papers complying with the above requirements. When multiple papers presented similar analyses on the same dataset, we only included data from the first paper identified. Only papers written in English were included. These criteria reduced the number of papers from 377 to 33 papers containing 305 data points, and the large reduction in number of papers was mostly due to missing data (criteria 3 and 4) or because comparisons were between traits or within traits between different time-points (i.e., weaning, entry, parity, lactation, days in milk) instead of between environments. This literature search is based on strict criteria to ensure high-quality data and is not meant to be exhaustive. The literature search and several elements of data extraction as well as trait definitions described in the current study (and the description thereof) are shared with another study where we investigate the dependence of genetic correlations on environmental similarity (Schou, Hoffmann, & Kristensen, 2019).

From each study, we extracted trait mean and  $V_R$  or parameters necessary for the estimation of  $V_R$  ( $h^2$ ,  $V_A$ ,  $V_p$ ). We also extracted repeatability when available or estimated repeatability based on estimates of  $V_{e-perm}$  (the permanent environmental variance: the phenotypic variance among individuals which is permanent across multiple measurements) if this parameter was available. When estimates were only graphically available, we extracted numerical data using WebPlotDigitizer (<http://arohatgi.info/WebPlotDigitizer/app/>). Some of the studies that passed the above criteria used random regression analysis to estimate genetic correlations across a defined environmental dimension (e.g., ambient temperature in Ravagnolo, Misztal, & Hoogenboom, 2000). For these studies, we extracted estimates of trait mean and  $V_R$  from the most extreme environments (with a suitable sample size) and from an intermediate environment, according to the trait mean.

### 2.2 | Optimal environments

Environments in studies on domestic animals are typically defined by traits related to production. Environments are assumed more optimal when high milk yield or weight gain in cattle is observed. High trait values might also reflect genetic improvement although such effects are minimized by focussing on one breed or else controlling for breed effects. We therefore use trait mean as a measure of proximity to the optimal environment (optimality); that is, the most optimal environment for the trait of interest is the one giving the highest mean, and therefore, the environment targeted in the selection process.

As an alternative to describing an environment using trait mean, we also classified each environment into one of three levels of environmental quality (similarity to the environment targeted in the selection process) using country of rearing and environmental description provided in the study. We grouped countries according to latitude and level of development (Table S1). We

acknowledge that this grouping is artificial, but it is nevertheless useful as it disconnects trait mean from the inferred environmental optimality and thereby circumvents potential issues with genetic improvement affecting trait mean. Canada and countries from North-Western Europe were assumed to have highly technical and modern rearing conditions as well as high levels of animal welfare, resulting in high levels of environmental quality. Countries from Eastern and Mediterranean Europe as well as highly developed countries in the Americas (excluding Canada) and Africa including South Africa were assumed to have somewhat lower levels of quality and increased levels of grazing. These were therefore classified as having intermediate environmental quality. The remaining countries from the Americas and Africa as well as Middle Eastern countries were classified as having a low environmental quality. However, if a reference provided environmental details indicating lower quality, such as lack of environmental control due to grazing, we subsequently decreased the level of quality independent of location (Table S1). Conversely, if environments were described as being particularly high quality, for example, by intensive management or feedlot rearing, we incremented the level of quality again independent of location. Based on this classification, environments with low quality are also expected to be less optimal as measured by trait means, and this approach therefore provides a different way to rank environments. The two measures of optimality were compared in studies where traits of the same breeds were measured at several levels of quality (Figure S1). Across studies and traits, optimality measured by trait mean was higher in environments of intermediate than of low quality (Wilcoxon signed-rank test:  $V = 1,092$ ,  $p < .001$ ) and higher in environments of high compared to intermediate quality (Wilcoxon signed-rank test:  $V = 1$ ,  $p = .016$ ).

### 2.3 | Trait definitions

We excluded traits under direct farmer control such as age of culling, and traits that could not be related to a distinct biological trait such as lifetime net income (see Table S2 for trait definitions). If a paper provided data on milk yield in several lactations, we used data from the first lactation, as this was the most prevalent across studies, and reduced issues associated with culling of low production individuals (Banos & Shook, 1990). Trait estimates related to milk production were typically reported on Holstein cattle (denoted Holstein–Friesian, Friesian or Holstein), while trait estimates related to beef production were mostly reported from Angus and Hereford or various mixed breeds (Figure S2). To investigate how selection has affected  $V_R$  across traits having some shared evolutionary history, we grouped traits into five categories based on evolutionary principles: disease indicator, growth, life history, morphology and physiology (Hoffmann, Merilä, & Kristensen, 2016; Roff & Mousseau, 1987) (Table S2). The trait category disease indicator was omitted from all analyses as we only obtained four estimates of  $V_R$ .

## 2.4 | Statistical analyses

### 2.4.1 | Estimating differences in $V_e$ between environments (general approach)

To enable comparisons across and within traits, we scaled the variance by the mean by calculating  $CV_R$  (coefficient of residual variance that includes all terms except  $V_A$ ), which is therefore used as a proxy of  $V_e$  throughout the analyses. For each trait in a study, we estimated the difference in  $CV_R$  between two environments by the coefficient of variation ratio ( $\ln CV_R$ ) (Morrissey, 2016; equation 11 in Nakagawa et al., 2015):

$$\ln CV_{R\text{optimal}} = \ln \left( \frac{CV_{R\text{more optimal}}}{CV_{R\text{less optimal}}} \right) + \frac{1}{2(n_{\text{more optimal}} - 1)} - \frac{1}{2(n_{\text{less optimal}} - 1)}$$

Here, a negative  $\ln CV_{R\text{optimality}}$  reflects a decrease in  $CV_R$  in the more optimal environment, while a positive  $\ln CV_{R\text{optimality}}$  reflects an increase in  $CV_R$  in the more optimal environment. We considered the environment with the highest trait value of each pair of environments as the more optimal (see above). The first term in the formula is the natural logarithm of  $CV_R$  in the two environments, while the two additional terms are used to control for differences in sample size (i.e., the number of individuals). When the number of individuals was not provided in the reference, we used the number of records. The sampling variance of  $\ln CV_R$  was estimated using equation 12 in Nakagawa et al. (2015), which also relies on the sample size. This equation was not derived with the uncertainty of the estimated variances from animal models in mind and may therefore underestimate this variance estimate; however, this is negligible because of the large sample size. The use of  $\ln CV_R$  relies on the assumption that  $SD_R$  and trait mean are linearly correlated, which has been verified for this dataset (Figure S3). We estimated  $\ln CV_{R\text{optimality}}$  for all possible pairs of  $CV_R$  estimates within each trait in a study, and only within breeds. This meta-analytic approach incorporates sample size and circumvents several issues with the use of ratios ( $CV_R$  is a ratio) in statistical analyses. Comparing  $CV_R$  among traits of different dimensionalities can yield spurious differences as higher dimensionality causes higher  $CV_R$  (Houle, 1992). However, this is not a problem in our dataset as no 3D traits are included in the survey.

### 2.4.2 | Comparing $CV_R$ between heterogeneous and controlled environments

Eight studies reported estimates of  $CV_R$  from two contrasting environments, one more heterogeneous (*organic* or *grazing*) and the other more homogeneous (*conventional*, *confinement*, *total mixed ration* or *feedlot*). We compared  $CV_R$  between these environments by estimating  $\ln CV_{R\text{homogeneity}}$

$$\ln CV_{R\text{homogeneity}} = \ln \left( \frac{CV_{R\text{homogeneous}}}{CV_{R\text{heterogeneous}}} \right) + \frac{1}{2(n_{\text{homogeneous}} - 1)} - \frac{1}{2(n_{\text{heterogeneous}} - 1)}$$

Here, a negative  $\ln CV_{R \text{ homogeneity}}$  reflects a decrease in  $CV_R$  in the homogeneous environment, while a positive  $\ln CV_{R \text{ homogeneity}}$  reflects an increase in  $CV_R$  in the homogeneous environment. For this particular analysis, a limited number of estimates of  $\ln CV_R$  were available ( $n_{\text{Growth}} = 7$ ,  $n_{\text{Life history}} = 9$ ,  $n_{\text{Morphology}} = 15$  and  $n_{\text{Physiology}} = 20$ ), preventing usage of generalized linear mixed models (GLMMs) accounting for study, trait and breed, and we therefore undertook one-sample  $t$  tests to assess whether the  $\ln CV_R$  of each trait category differed from zero.

## 2.5 | Testing the dependence of $CV_{R \text{ optimality}}$ on the distance to trait optimum

To investigate the change in  $CV_R$  with increasing proximity to a trait optimum, we tested if the difference in trait mean between two environments correlated with their difference in  $CV_R$  ( $\ln CV_{R \text{ optimality}}$ ). The difference in trait mean ( $\bar{x}$ ) was estimated as the response ratio ( $\ln RR$ ), with the highest trait value being defined as closer to the optimum and therefore more optimal.

$$\ln RR = \ln \left( \frac{\bar{x}_{\text{more optimal}}}{\bar{x}_{\text{less optimal}}} \right)$$

As the numerator is by definition bigger than the denominator,  $\ln RR$  will always be positive, and a higher  $\ln RR$  will reflect a higher increase in optimality from one environment to the other.

We tested the effect of  $\ln RR$  on  $\ln CV_{R \text{ optimality}}$  in each of the trait categories using a linear mixed model (Gaussian distribution) in a Bayesian framework in the R-package MCMCglmm (v.2.25) (Hadfield, 2010). We specified  $\ln RR$  (continuous) and trait category (factorial) as well as their interaction as the fixed effects. Study, trait and breed were specified as random effects, with random slopes (unstructured covariance–variance matrix) of breed across  $\ln RR$ . We accounted for the estimated sampling variance by using the build-in argument *mev* that is specifically designed to handle sampling variance. We specified the random effects and residual priors as (uninformative) inverse gamma priors ( $V = 1$ ,  $nu = 0.002$ ) and performed 1,000,000 iterations of which the initial 20,000 were discarded and only one in 500 runs was used for estimating posterior probabilities. Convergence of the estimates was checked by running the model four times and inspecting trace plots and their overlap of the MCMC chain and the level of autocorrelation among posterior samples.

Within each trait category, some traits may show trait-specific responses to  $\ln RR$ . Our literature survey resulted in 368 estimates of  $\ln CV_{R \text{ optimality}}$  but with a highly skewed distribution across a high number of traits ( $n = 52$ ). 43 traits had less than seven estimates and only four traits had more than 15 estimates. As a consequence, we focused on the four traits with highest replication: yearly milk yield (*305-d milk yield*), birthweight, bodyweight at weaning (*200–210-d body weight*) and dry matter intake. To analyse the effect of  $\ln RR$  on  $\ln CV_{R \text{ optimality}}$  in each of these traits, we followed the same approach as for the trait category analysis (priors, iterations, sampling and

convergence check). We specified  $\ln RR$  as the sole fixed effect and study as a random effect. As three of the traits predominantly consisted of estimates from one breed (yearly milk yield:  $n_{\text{Holstein}} = 37$ ,  $n_{\text{Guernsey}} = 6$ ,  $n_{\text{Jersey}} = 1$ ; birthweight:  $n_{\text{Angus}} = 37$ ,  $n_{\text{Hereford}} = 3$ ; dry matter mass:  $n_{\text{Holstein}} = 28$ ) and the last trait from two breeds (bodyweight at weaning:  $n_{\text{Angus}} = 38$ ,  $n_{\text{Hereford}} = 21$ ;  $n_{\text{MixedTemperateMeat}} = 3$ ), we restricted the analysis to these breeds.

## 2.6 | Comparing $CV_R$ between environments of different quality

As an alternative to using trait mean as a measure of how optimal an environment is in terms of proximity to trait optimum, we investigated whether our classification into environmental quality was related to estimates of  $CV_R$  in each of the trait categories. We used the meta-analytic framework from above and compared  $CV_R$  of a trait measured at two different environmental qualities within a study using  $\ln CV_{R \text{ quality}}$ .

$$\ln CV_{R \text{ quality}} = \ln \left( \frac{CV_{R \text{ higher quality}}}{CV_{R \text{ lower quality}}} \right) + \frac{1}{2(n_{\text{higher quality}} - 1)} - \frac{1}{2(n_{\text{lower quality}} - 1)}$$

Here, a negative  $\ln CV_{R \text{ quality}}$  reflects a decrease in  $CV_R$  in the higher quality environment, while a positive  $\ln CV_{R \text{ quality}}$  reflects an increase in  $CV_R$  in the higher quality environment. To test whether the  $\ln CV_{R \text{ quality}}$  of the environmental contrasts was predominantly below or above zero, we used a linear mixed model with the same modelling approach as for  $\ln RR$  (priors, iterations, sampling and convergence check). We specified environmental contrast (High vs. Intermediate, High vs. Low or Intermediate vs. Low) and trait category as well as their interaction as fixed effects. Study, trait and breed were specified as random effects.

## 2.7 | Comparing $V_e$ and $V_E$

If micro-environmental change has the same phenotypic effects as macro-environmental change, a trait showing high  $V_e$  is predicted to also show high  $V_E$  and *vice versa*, resulting in a linear association between  $V_e$  and  $V_E$  across traits. To estimate  $V_E$ , we need measurements at multiple well-defined environments within a study, but a comparison across traits and studies is only possible if the same environments are tested for all traits, excluding the majority of the surveyed literature. The largest subset of our surveyed literature fulfilling these requirements was three studies encompassing a total of 17 traits, all measured in two different feedlot environments and one pasture-based environment (Johnston, Reverter, Burrow, Oddy, & Robinson, 2003; Johnston, Reverter, Ferguson, Thompson, & Burrow, 2003; Reverter, Johnston, Perry, Goddard, & Burrow, 2003). We estimated  $V_E$  as the variance of trait means in the three environments and standardized this measure by the trait mean across environments ( $CV_E$ ). Hence, for this analysis the data structure is one

estimate of  $CV_E$  and multiple estimates of  $CV_R$  (one for each of the three environments) for each trait in each study, preventing usage of  $\ln CV_R$  as a measure of difference in variability. We therefore investigated the relationship between  $CV_R$  and  $CV_E$  by fitting a linear mixed model with  $CV_R$  as the response variable and  $CV_E$  as the sole fixed effect. Study and trait were specified as random effects, whereas breed was not included as all data originated from one breed. The model was fitted using MCMCglmm (v.2.25) (Hadfield, 2010) using a similar modelling approach (priors, iterations, sampling and convergence check) as for the  $\ln RR$  analysis.

### 3 | RESULTS

#### 3.1 | Does the heterogeneity of environments affect $CV_R$ ?

When comparing  $CV_R$  in heterogeneous environments (i.e., free-ranging) and homogeneous environments (i.e., confined) (Figure S4 for trait-specific data), the production-related trait category of growth traits showed a higher  $CV_R$  in homogenous environments compared to heterogeneous environments (a positive  $\ln CV_{R \text{ homogeneity}}$ ;  $t_{(6)} = 2.93$ ,  $p = .027$ ; Figure 1). The other production-related trait category consisting of life history traits showed no difference between the two environments ( $t_{(8)} = -0.55$ ,  $p = .592$ ). However, morphological traits (a negative  $\ln CV_{R \text{ homogeneity}}$ ;  $t_{(14)} = -2.76$ ,  $p = .015$ ) and physiological traits (a negative  $\ln CV_{R \text{ homogeneity}}$ ;  $t_{(19)} = -2.85$ ,  $p = .010$ ) both had a lower  $CV_R$  in the homogenous than in the heterogeneous environment. It should be noted here that low levels of replication made us prefer simple one-sample  $t$  tests and not the more robust meta-analytic approach used for the other analyses, and the results should be interpreted with this mind.

#### 3.2 | Does $CV_R$ decrease in more optimal environments?

When testing the change in  $CV_R$  from suboptimal to more optimal environments ( $\ln CV_{R \text{ optimality}}$ ), one prediction is that no or a very small increase in optimality ( $\ln RR \sim 0$ ) should result in no or little change in  $CV_R$  ( $\ln CV_{R \text{ optimality}} \sim 0$ ). This prediction was confirmed across trait categories and traits (Figure 2) with intercepts estimated to be close to zero (Table 1). We hypothesized that as the increase in optimality becomes larger ( $\ln RR \gg 0$ ),  $CV_R$  should decrease due to historical selection in these environments, represented by a negative relationship between  $\ln RR$  and  $\ln CV_{R \text{ optimality}}$ . This prediction was confirmed for life history traits, whereas no significant effects were identified for the other trait categories (Figure 2, Table 1). The decrease in  $\ln CV_{R \text{ optimality}}$  was also found when focusing on the life history trait yearly milk yield (Figure 2, Table 1). Traits in the growth trait category are all traits measuring body weight at a certain age, except the trait dry matter intake which is a measure of feed intake. Both body weight at weaning and birthweight showed a decrease

in  $CV_R$  when measured in more optimal environments, but there was no effect on dry matter intake (Figure 2, Table 1). In line with this, a separate analysis of the growth category without dry matter intake resulted in a significant decrease in  $\ln CV_{R \text{ optimality}}$  with increasing difference in optimality ( $\ln RR = -1.55$ ;  $CI = -3.83$  to  $-0.04$ ;  $p_{MCMC} = .036$ ).

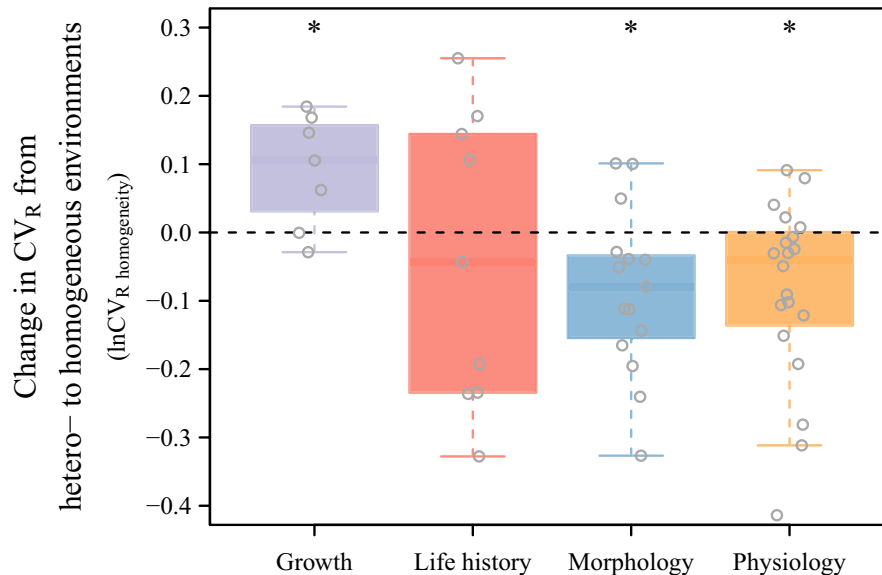
We also tested the impact of environmental quality on  $CV_R$ , as an alternative to the use of mean trait value as a measure of environmental optimality. Our assessment of quality was based on both geographical and environmental information provided in the studies, and resulted in 117 estimates of  $\ln CV_{R \text{ quality}}$  comparing different qualities. When we considered life history traits (Figure S5 for trait-specific  $CV_R$  estimates), we found a significantly lower  $CV_R$  at high compared to low environmental quality, represented by a negative  $\ln CV_{R \text{ quality}}$  (High vs. Low =  $-0.49$ ;  $CI = -0.71$  to  $-0.27$ ;  $p_{MCMC} < .001$ ; Figure 3, Table S3). This was also the case when comparing  $CV_R$  of growth traits between environments of intermediate and low quality (Intermediate vs. Low =  $-0.19$ ;  $CI = -0.38$  to  $-0.01$ ;  $p_{MCMC} = .048$ ; Figure 3, Table S3). None of the environmental contrasts were significant for the physiological or morphological trait categories (Figure 3, Table S3).

#### 3.3 | Is there an association between $CV_R$ and $CV_E$ across traits?

In the data extracted from three studies where all traits were measured in the same three environments, we found the traits with high within environmental variance ( $CV_R$ ) to also have significantly higher among environmental variance ( $CV_E$ ) (Figure 4).

#### 3.4 | Patterns of $CV_R$ across traits

From the literature survey, we obtained 306 estimates of  $CV_R$  (Table S4), which are grouped by traits and presented in a boxplot (Figure S6), along with within-individual environmental variance ( $CV_{WI}$ ) estimated from repeatability and  $V_p$ . Traits in the growth category had particularly low  $CV_R$  with the exception of two traits measuring growth in narrow time intervals (weight gain and daily weight gain). The same pattern was observed for production traits related to life history, where traits measured across long time intervals (305 days) showed relatively low  $CV_R$  in comparison with the limited time intervals of daily yield. The life history traits related to reproduction spanned the entire range of  $CV_R$ , with age at first calving and gestation period being as low as the production traits, while traits quantifying the time interval between two reproduction events had higher  $CV_R$ . Survival is dependent on farmer culling, and this trait also had a very high estimate of  $CV_R$ . Morphological traits were distributed in two groups, one consisting of classical morphological traits such of size of a given muscle, which had low  $CV_R$ , and a second describing the amount of fat in the muscles which had high  $CV_R$ . The physiological traits comprised both the per cent fat and protein of milk,



**FIGURE 1** Boxplot comparing  $CV_R$  between heterogeneous and homogeneous environments. Eight studies compared the performance of cattle in environments contrasted by their difference in rearing, where one was characterized as more heterogeneous (free-ranging, including organic or grazing) and the other environment as more homogenous and controlled (conventional, confinement, total mixed ration or feedlot).  $CV_R$  is a proxy of  $V_e$  and was estimated as the coefficient of residual variance that includes all terms except  $V_A$ . To compare the  $CV_R$  between the two environments within a study, we calculated the coefficient of variation ratio ( $\ln CV_{R \text{ homogeneity}}$ ).  $\ln CV_{R \text{ homogeneity}}$  measures the relative change in  $CV_R$  from a heterogeneous to a more homogeneous environment, and hence, negative values indicate lower  $CV_R$  in the more homogenous environment and vice versa. Trait-specific estimates are presented in Figure S4. \* $p < .05$

physiological characteristics of muscles as well as rectal temperature, which all generally had low  $CV_R$ .

## 4 | DISCUSSION

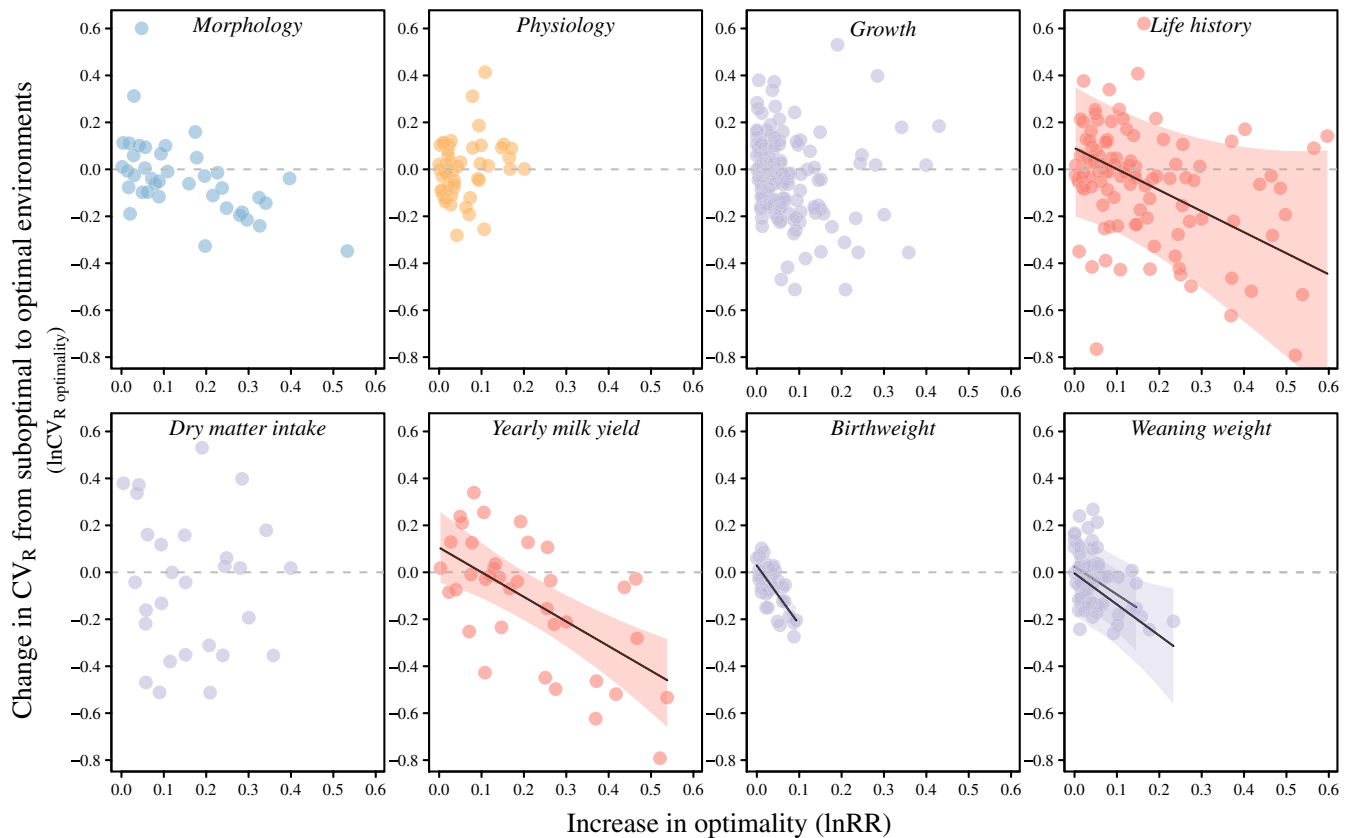
### 4.1 | $CV_R$ in heterogeneous environments

Adaptive evolution has long been thought to be involved in shaping phenotypic sensitivity to micro-environmental variance (Van Valen, 1962; Waddington, 1942). Here, we used estimates of  $V_e$  from the domestic cattle literature (estimated as  $CV_R$ ) to identify patterns of  $V_e$  across environments with different histories of selection and different micro-environmental variation. As expected, we found  $CV_R$  to increase when a cattle breed is reared in heterogeneous environments and spends more time in pastures, compared to when the cattle breed is reared in more controlled environments predominantly involving confinement (Figure 1). This fits well with the expectations for traits under relaxed selection, where a more heterogeneous environment is predicted to increase  $V_e$  due to increased chances of encountering different conditions each having distinct effects on the phenotype. However, this was not the case for traits linked to production (growth and life history traits). Here, environmental heterogeneity decreased  $CV_R$  (growth) or had no effect on  $CV_R$  (life history). Production traits are expected to be under the strongest selection towards a constant trait optimum across environments. Such stabilizing selection can potentially reduce or remove any association between heterogeneity and  $V_e$  (Gillespie & Turelli, 1989), resulting in evolution of a decreased influence of environmental

heterogeneity on  $V_e$  in these traits. The observed signature of selection in domestic cattle is unlikely to exist for similar traits in natural populations (Kingsolver et al., 2001) living in more heterogeneous environments. For instance, natural populations are likely to face fluctuating food availability and large variation in abiotic factors such as temperature and variation, which are reduced in livestock in confinement being fed ad libitum. However, in natural populations other traits such as those related to species recognition would be expected to be under strong stabilizing selection favouring the same optimal phenotype across environments.

### 4.2 | Selection for decreased CVR in more optimal environments

When using an increased trait value as a proxy for a more optimal environment, we found evidence for a decrease in  $CV_R$  in more optimal environments in life history and growth traits. This may reflect stabilizing selection; when the trait mean approaches the optimum trait value (or the optimum environment), high  $V_e$  becomes disadvantageous and a reduction in  $V_e$  may be expected under stabilizing and directional selection (Bull, 1987; Gavrilets & Hastings, 1994; Slatkin & Lande, 1976). On the other hand, strong directional selection may increase  $V_e$  as extreme phenotypes are favoured by selection (Hill & Zhang, 2004; Mulder et al., 2007), but this is not supported by the pattern we observed. Our findings suggest that strong selection on the mean trait value under optimal rearing conditions favours a reduced micro-environmental variance for these traits (Figure 2). Indeed, the life history and growth traits are typically associated



**FIGURE 2** Association between  $CV_R$  and proximity to trait optimum (optimality).  $CV_R$  is a proxy of  $V_e$  and was estimated as the coefficient of residual variance that includes all terms except  $V_A$ . We used trait mean as a measure of proximity to trait optimum (higher trait mean being more optimal) and measured the relative change in  $CV_R$  from a suboptimal to a more optimal environment using  $\ln CV_{R \text{ optimality}}$ . We then tested if  $\ln CV_{R \text{ optimality}}$  was affected by the difference in optimality between the two environments ( $\ln RR$ ). In traits from the life history category, we found a greater reduction in  $CV_R$  (negative  $\ln CV_{R \text{ optimality}}$ ) to correlate with the increase in optimality (increased  $\ln RR$ ). This was supported by a similar correlation in the production-related trait yearly milk yield (Holstein cattle). No relationship was found for the other trait categories; however, the production-related growth traits birthweight (Angus cattle) and weaning weight (upper line: Angus and lower line: Hereford) also showed a reduction in  $CV_R$  with increasing optimality of the rearing environment (Table 1). Colours illustrate the four trait categories: morphology (blue), physiology (yellow), growth (purple) and life history (red). The shaded area around the fitted line represents the 95% confidence interval

with milk production (e.g., yearly fat yield and yearly milk yield) and beef production (weaning weight and birthweight); traits that have all been under strong selection. It is however possible that optimal environments are also more homogenous, so that lower micro-environmental variation and not environmental optimality are driving lower  $CV_R$ . As we found an increase in  $CV_R$  of growth traits in more homogenous environments (Figure 1) and evidence for a reduction in  $CV_R$  in more optimal environments (Figure 2), we suspect that selection on  $V_e$  is involved.

We also considered another measure of environmental optimality which disregarded trait mean and instead assigned each  $CV_R$  to three quality levels (environmental quality). This approach puts the environment on one single scale across traits, allowing us to test for overall differences in each trait category. The grouping of environments was based on the grounds that the vast majority of estimates of  $CV_R$  used in this study originate from Holstein, Angus and Hereford cattle (or varieties hereof), all originally Northern European breeds (Decker et al., 2014) and still bred for performance in highly controlled environments. For both growth and life history traits, our

results supported a decrease in  $CV_R$  in environments classified as having a higher quality (Figure 3). This was not significant for all contrasts, but suggests some support for the findings obtained when using trait value as a proxy for a more optimal environment. The lower selection intensity and more variable nature of selection and trait-fitness associations in natural populations (Hunter et al., 2018) would make it much harder to detect such a signal in wild populations. Recently, a meta-analysis based predominantly on laboratory studies of fish and insects presented support for a reduced residual variance in benign compared to stressful environments (Rowiński & Rogell, 2017).

### 4.3 | Patterns of $CV_R$ across traits

Estimates of  $CV_R$  were relatively low for growth traits (Figure S6) likely to have been under strong directional selection during domestication (Rauw, Johnson, Gomez-Raya, & Dekkers, 2017) as well as for a subset of the morphological traits important for beef



Model	Fixed effect	Posterior mean (CI)	$p_{\text{MCMC}}$
Trait categories	Growth	0.02 (-0.24;0.28)	.836
	Growth: InRR	-0.67 (-1.44;0.13)	.075
	Physiology	-0.06 (-0.33;0.22)	.643
	Physiology: InRR	1.08 (-0.25;2.45)	.112
	Morphology	0.06 (-0.19;0.35)	.643
	Morphology: InRR	-0.37 (-1.34;0.77)	.444
	Life history	0.09 (-0.19, 0.37)	.472
	Life history: InRR	-0.91 (-1.76;-0.08)	<b>.021</b>
Dry matter intake	Intercept	-0.02 (-0.23;0.19)	.836
	InRR	-0.17 (-1.20;0.93)	.746
Body weight at weaning	Breed (Angus)	0.03 (-0.12;0.16)	.599
	Breed (Angus): InRR	-1.15 (-2.01;-0.28)	<b>.019</b>
	Breed (Hereford)	0.00 (-0.20;0.15)	.905
	Breed (Hereford): InRR	-1.33 (-2.64;0.17)	<b>.037</b>
Birthweight	Intercept	0.06 (-0.39;0.42)	.943
	InRR	-2.23 (-3.25;-1.22)	<b>&lt;.001</b>
Milk yield	Intercept	0.14 (-0.17;0.46)	.228
	InRR	-0.94 (-1.36;-0.51)	<b>&lt;.001</b>

**TABLE 1** Testing the change in  $CV_R$  from suboptimal to more optimal environments using GLMMs in MCMCglmm

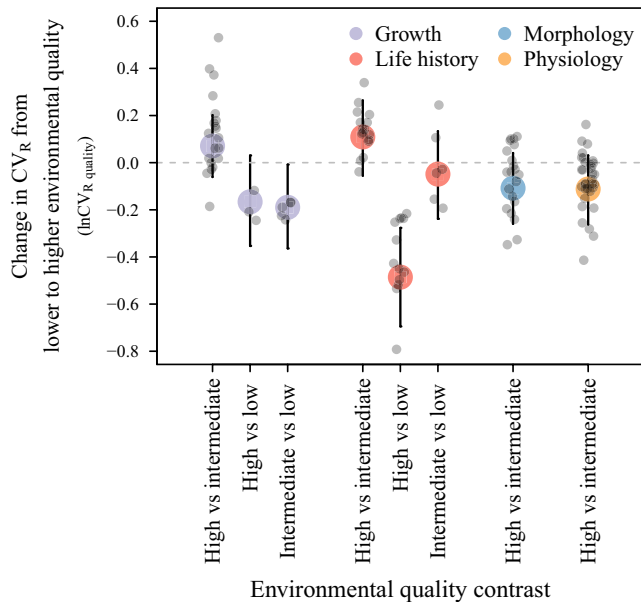
Note: A term was considered statistically significant when the  $p_{\text{MCMC}}$  value < .05 marked in bold.

The change in  $CV_R$  (a proxy of  $V_e$ ) from suboptimal to more optimal environments was measured by  $\ln CV_{R \text{ optimality}}$ , while the relative difference in optimality between two environments (always from suboptimal to optimal) was measured by InRR. Hence, a negative  $\ln CV_{R \text{ optimality}}$  reflects a decrease in  $CV_R$  in the more optimal environment. We tested the effect of InRR on  $\ln CV_{R \text{ optimality}}$  in a model with the four trait categories (growth, physiology, morphology and life history) and in trait-specific models for the four traits with  $n_{\text{estimates}} > 15$ . In these models, a negative relationship of InRR on  $\ln CV_{R \text{ optimality}}$  reflects that a greater reduction  $CV_R$  (negative  $\ln CV_{R \text{ optimality}}$ ) occurs when the increase in optimality is large (increased InRR). The models were constructed such that the regression lines and intercepts of each trait category/trait were compared to an  $\ln CV_{R \text{ optimality}}$  of zero.

production. In comparison, traits related to storage of energy surplus, both intra- and extra-muscular fat (P8 on Figure S6) had high estimates of  $CV_R$ . The phenotypic optimum of these traits may have varied in the past given that optimal levels of fat storage are expected to vary across seasons and years due to changing weather. Such fluctuating selection due to environmental heterogeneity has also been observed for male horn growth in a wild population of Soay sheep (Robinson, Pilkington, Clutton-Brock, Pemberton, & Kruuk, 2008) and is an example of how higher levels of  $V_e$  can be maintained by selection in natural populations. Patterns for life history traits fell into two groups. One group had a high  $CV_R$ , consisting of milk production traits measured over short time scale that likely have low repeatability (high  $CV_{\text{WI}}$ ) increasing the lower limit of  $CV_R$ . This group also included reproduction traits quantifying the time interval between two reproduction events that will vary between seasons and years. The other group of traits with lower  $CV_R$ s included yearly milk production and measures of gestation period and thus milk production, both traits expected to have been directionally selected under and after domestication. While these traits showed low micro-environmental sensitivity compared to the other life history traits,  $CV_R$  of milk production traits was surprisingly high given their

link to production. Perhaps  $CV_R$  is constrained by a low repeatability, but care should be taken here, as repeatability is measured across lactations, which may represent partly distinct traits (Haile-Mariam & Pryce, 2015; Yamazaki, Takeda, Osawa, Yamaguchi, & Hagiya, 2019).

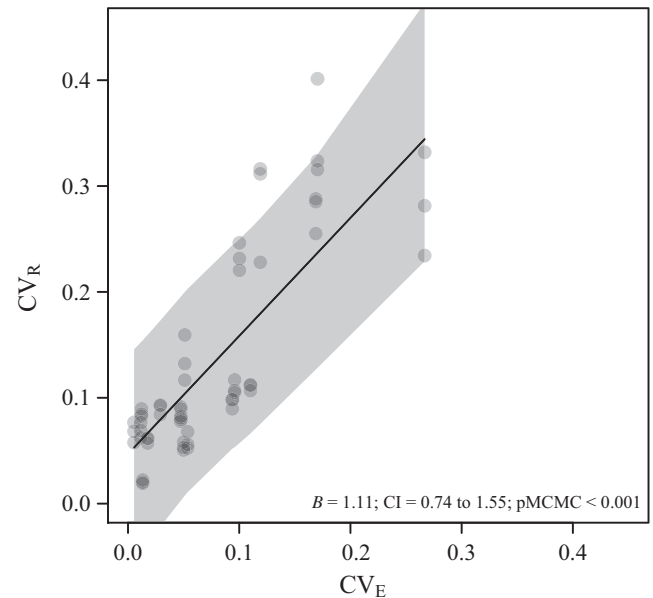
Relating these patterns to those measured in natural populations is challenged by the scarcity of studies on this subject. Some of the closest relatives to the domesticated cattle include the highly domesticated water buffalo, while nondomesticated species (or to a lesser extent) include the common eland, bison species, the African buffalo, the rare saola, the addax as well as wildebeest and gazelle species (Bibi, 2013). Few genetic analyses have been performed on these species, with the exception of a study on the highly inbred Cuvier's gazelle (Ibáñez, Cervantes, Gutiérrez, Goyache, & Moreno, 2014) in which estimates on the environmental variance are not provided. The only study we could find comparing  $CV_R$  across traits in a wild mammal population (red deer) also found higher  $CV_R$  in life history traits than for morphological traits (leg length and jaw length) and birthweight (Kruuk et al., 2000). However, measured life history traits were mostly fitness traits influenced by longevity, which is a complex phenotype that is also influenced by stochastic events.



**FIGURE 3** Change in  $CV_R$  from lower to higher environmental quality. Environmental quality (a measure of optimality) was assigned to each  $CV_R$  estimate using information on country of origin and environmental details from the reference.  $CV_R$  is a proxy of  $V_e$  and was estimated as the coefficient of residual variance that includes all terms except  $V_A$ . The change in  $CV_R$  from lower to higher environmental quality was measured by  $\ln CV_{R \text{ quality}}$ . Several of the environmental quality contrasts of growth and life history traits showed a decrease in  $CV_R$  in environments of higher quality (a negative  $\ln CV_{R \text{ quality}}$ ). Points and error bars show the posterior mean and 95% confidence intervals estimated in GLMMs in MCMCglmm

#### 4.4 | An association between $CV_R$ and $CV_E$ across traits

Macro-environmental variance ( $V_E$ ) is typically presented as reflecting large changes in a few controlled environmental parameters, while  $V_e$  reflects variation in an infinite number of environmental parameters. However, there may still be overlap in genetic factors contributing to  $V_e$  and  $V_E$ , which leads to the prediction that traits with low sensitivity to  $V_e$  will have a relatively low sensitivity to  $V_E$ . We found support for this relationship (Figure 4), but because such comparisons are only permissible when the same micro- and macro-environments are assessed across traits, the trait subset was rather restricted, which precludes comparisons among trait groups. In *Drosophila melanogaster*, partitioning of four different components of the environmental variance of cold tolerance revealed significant genetic correlations among these components (Ørsted et al., 2018). Although only performed on one trait, it suggests that components of environmental variation can be partly described by a common axis of environmental change (Debat & David, 2001). We speculate that in natural populations, traits under selection for a buffering of macro-environmental changes, will show a decreased micro-environmental sensitivity, and *vice versa*. Such buffering can be described as canalization of phenotypic perturbations, for example, by the expression of epistatic genes, a mechanism known to evolve and buffer



**FIGURE 4** Association between  $CV_E$  and  $CV_R$ . Meaningful comparisons of phenotypic variance among and within environments require that all traits are measured in the same combination of environments. Three of the studies in our literature survey measured performance across 17 traits, and all measured in two different feedlot environments and one pasture-based environment (Johnston, Reverter, Burrow, et al., 2003; Johnston, Reverter, Ferguson, et al., 2003; Reverter et al., 2003). Environmental variance across environments ( $V_E$ ) was estimated as the variance in trait means in the three environments. We tested the effect of  $CV_E$  on  $CV_R$  using a linear mixed model. The shaded grey area around the fitted line represents the 95% confidence interval

the influence of both small- and large-scale environmental variation across multiple environmental parameters (Flatt, 2005).

#### 4.5 | Livestock literature in evolutionary biology

Drawing general conclusions on the evolution of environmental sensitivity is often limited by restrictions on sample size and experimental constraints when investigating natural and laboratory populations. To overcome these issues, we have exploited the extensive livestock literature. However, we acknowledge that this approach is based on several assumptions and the relevance of the conclusions to natural populations remains to be tested.

In order to make  $V_e$  (approximated by  $V_R$ ) comparable across environments and studies, we followed typical practice and standardized  $V_e$  by the mean (Kruuk et al., 2000; Rowiński & Rogell, 2017). This relies on the assumption that the variance scales with the mean in biological traits and that selection for increased mean causes a correlated response in the variance (Falconer & Mackay, 1996); hence, we assume that deviations from this relationship therefore reflect evolutionary change in  $V_e$ . This assumption is supported by positive variance–mean relationships in most of the tested traits (Figure S3).

When interpreting differences in  $CV_R$  across environments, we assume a history of directional and/or stabilizing selection on a trait's mean, of varying strength across traits. However, the distinction between the two modes of selection may not be clear in cattle breeds. Mean levels of most production-related traits (milk and meat) have increased across the last century through strong directional selection aided by progeny testing (Robertson & Rendel, 1950) where superior bulls are selected on the basis of the performance of their offspring in a multiple trait index (Hazel, 1943). But due to morphological and/or physiological constraints, there are likely to be negative fitness consequences of very high production outputs (Rauw, Kanis, Noordhuizen Stassen, & Grommers, 1998). Therefore, an upper limit has likely been indirectly enforced during selection on these traits, resulting in some form of stabilizing selection (García-Ballesteros, Gutiérrez, Varona, & Fernández, 2017). Cattle were domesticated approximately 10,500 years ago (Bollongino et al., 2012; Scheu et al., 2015). Following this, processes of artificial selection were likely practised for thousands of years before selection became based on modern multi-trait progeny testing procedures. Our interpretations are therefore based on the assumption that traits have evolved substantially since domestication, also before modern selection programs were used, and that the current trait values have been shaped by some form of stabilizing selection.

The finding of a low  $CV_R$  in environments with high trait values and a high  $CV_R$  in environments with low trait values was interpreted to be a product of selection. This relies on the assumption that environments where high trait values are observed are more optimal and on the assumption that the most optimal environments are the environments where selection for production traits occurs in domestic cattle. In such a system, evolutionary theory predicts that if stabilizing selection on the mean is strong and the trait mean approaches the optimum, genotypes increasing  $V_e$  will be at a disadvantage as they are likely to produce a nonoptimal phenotype (Bull, 1987; Gavrillets & Hastings, 1994; Slatkin & Lande, 1976). Conversely, a less optimal environment reflects an environment where phenotypes are far from the phenotypic optimum. Since selection typically does not take place in such environments, relatively higher expression of  $V_e$  might then be expected.

We also consider each trait or trait group as independent, an assumption that is likely to be violated. Genetic correlations between the means of different traits that influence evolution of trait means can vary across environments (Rauw et al., 1998; Sgrò & Hoffmann, 2004), and we know very little of the potential for genetic correlations between micro-environmental variances across traits, or even between micro-environmental variance of one trait and mean of another trait (Mulder, Hill, & Knol, 2015).

Another assumption in our interpretation is that similar modes of selection (breeding goals) occur across countries and in different cattle breeds. Beef and dairy cattle are obviously selected for different traits, and within breeds, the emphasis of breeding programs can differ, such as for increased milk yield in one instance and increased milk fat percentage in another instance, leading to country-specific breeding goals and production levels (<http://www.interbull.org/ib/geforms>). However, while the weight given to different production

traits in a merit index will differ strongly between dairy and beef cattle, the general breeding goals are in the same direction in both groups (Cunningham, 1983; Miglior et al., 2017), and across breeds and countries, there is an overall focus on mild-mannered animals adapted to agricultural environments. For breeds exposed to a minor increase in the strength of selection for a given trait, phenotypes far from the optimum will be more disadvantageous, and a steeper decrease in  $V_e$  is therefore expected as the trait value approaches the optimum. With different strengths of selection acting on traits across breeds and countries, this may introduce some variance into the dataset, but the expectation of a reduction in  $V_e$  near the optimum still holds and should not affect the patterns detected. We suspect that livestock data constitute an important source of information, which complements theoretical and experimental approaches for answering key evolutionary questions.

## 5 | CONCLUSIONS

We quantified the environmental dependence of micro-environmental variance, with the aim of relating these patterns to past selection on trait means in optimal environments. Using livestock data, we found patterns of a decrease in  $CV_R$  in the environments where we expected strongest historical selection, a pattern that may reflect selection. Our findings send a clear signal to animal breeders and evolutionary biologists that micro-environmental variance likely evolves in response to selection on a trait's mean. Evidence for genetic variation underlying micro-environmental variance has been reported from several studies (Hill & Mulder, 2010; Ibáñez-Escriche, Sorensen, Waagepetersen, & Blasco, 2008). This suggests that future selection targeting micro-environmental variance could be successful in increasing animal robustness and welfare, and lead to more uniform production within environments (see also Blasco et al., 2017; Mulder et al., 2007; Mulder et al., 2008). Similar recommendations have recently been put forward for macro-environmental variance (Mulder, 2016). Thus, our approach and findings constitute examples of how evolutionary theory can guide applied sciences such as animal breeding while producing important evolutionary insights.

## ACKNOWLEDGEMENTS

This work was supported by the Danish Natural Research Council (Sapere Aude grants to TNK).

## CONFLICT OF INTEREST

None declared.

## DATA AVAILABILITY STATEMENT

Data for this study are available in the supplementary information.

## ORCID

Mads F. Schou  <https://orcid.org/0000-0001-5521-5269>

Torsten N. Kristensen  <https://orcid.org/0000-0001-6204-8753>

Ary A. Hoffmann  <https://orcid.org/0000-0001-9497-7645>

## REFERENCES

- Banos, G., & Shook, G. E. (1990). Genotype by environment interaction and genetic correlations among parities for somatic cell count and milk yield. *Journal of Dairy Science*, *73*, 2563–2573. [https://doi.org/10.3168/jds.S0022-0302\(90\)78942-4](https://doi.org/10.3168/jds.S0022-0302(90)78942-4)
- Bibi, F. (2013). A multi-calibrated mitochondrial phylogeny of extant Bovidae (Artiodactyla, Ruminantia) and the importance of the fossil record to systematics. *BMC Evolutionary Biology*, *13*, 166.
- Blasco, A., Martínez-Álvaro, M., García, M. L., Ibáñez-Escriche, N., & Argente, M. J. (2017). Selection for environmental variance of litter size in rabbits. *Genetics Selection Evolution*, *49*, 1–8. <https://doi.org/10.1186/s12711-017-0323-4>
- Blows, M. W., & Brooks, R. (2003). Measuring nonlinear selection. *The American Naturalist*, *162*, 815–820. <https://doi.org/10.1086/378905>
- Bollongino, R., Burger, J., Powell, A., Mashkour, M., Vigne, J. D., & Thomas, M. G. (2012). Modern taurine cattle descended from small number of near-eastern founders. *Molecular Biology and Evolution*, *29*, 2101–2104. <https://doi.org/10.1093/molbev/mss092>
- Bruijning, M., Metcalf, C. J. E., Jongejans, E., & Ayroles, J. F. (2020). The evolution of variance control. *Trends in Ecology & Evolution*, *35*(1), 22–33. <https://doi.org/10.1016/j.tree.2019.08.005>
- Bull, J. J. (1987). Evolution of phenotypic variance. *Evolution*, *41*, 303–315. <https://doi.org/10.1111/j.1558-5646.1987.tb05799.x>
- Carabano, M. J., Wade, K. M., & Van Vleck, L. D. (1990). Genotype by environment interactions for milk and fat production across regions of the United States. *Journal of Dairy Science*, *73*, 173–180. [https://doi.org/10.3168/jds.S0022-0302\(90\)78661-4](https://doi.org/10.3168/jds.S0022-0302(90)78661-4)
- Cunningham, E. P. (1983). Structure of dairy cattle breeding in Western Europe and comparisons with North America. *Journal of Dairy Science*, *66*, 1579–1587. [https://doi.org/10.3168/jds.S0022-0302\(83\)81975-4](https://doi.org/10.3168/jds.S0022-0302(83)81975-4)
- Debat, V., & David, P. (2001). Mapping phenotype: Canalization, plasticity and developmental stability. *Trends in Ecology & Evolution*, *16*, 555–561.
- Decker, J. E., McKay, S. D., Rolf, M. M., Kim, J. W., Molina Alcalá, A., Sonstegard, T. S., ... Taylor, J. F. (2014). Worldwide patterns of ancestry, divergence, and admixture in domesticated cattle. *PLoS Genetics*, *10*, e1004254.
- Falconer, D. S. (1990). Selection in different environments: Effects on environmental sensitivity (reaction norm) and on mean performance. *Genetical Research*, *56*, 57–70. <https://doi.org/10.1017/S001667230028883>
- Falconer, D. S., & Mackay, T. F. C. (1996). *Introduction to quantitative genetics*, 4th ed. Harlow, UK: Pearson.
- Flatt, T. (2005). The evolutionary genetics of canalization. *The Quarterly Review of Biology*, *80*, 287–316. <https://doi.org/10.1086/432265>
- García-Ballesteros, S., Gutiérrez, J. P., Varona, L., & Fernández, J. (2017). The influence of natural selection in breeding programs: A simulation study. *Livestock Science*, *204*, 98–103. <https://doi.org/10.1016/j.livsci.2017.08.017>
- Gavrilets, S., & Hastings, A. (1994). A quantitative-genetic model for selection on developmental noise. *Evolution*, *48*, 1478–1486. <https://doi.org/10.1111/j.1558-5646.1994.tb02190.x>
- Gillespie, J. H., & Turelli, M. (1989). Genotype-environment interactions and the maintenance of polygenic variation. *Genetics*, *121*, 129–138.
- González Marín, A., Olave, M., Avila, L. J., Sites, J. W., & Morando, M. (2018). Evidence of body size and shape stasis driven by selection in Patagonian lizards of the *Phymaturus patagonicus* clade (Squamata: Liolaemini). *Molecular Phylogenetics and Evolution*, *129*, 226–241. <https://doi.org/10.1016/j.ympev.2018.08.019>
- Hadfield, J. D. (2010). MCMC methods for multi-response generalized linear mixed models: The MCMCglmm R package. *Journal of Statistical Software*, *33*, 1–22.
- Haile-Mariam, M., & Pryce, J. E. (2015). Variances and correlations of milk production, fertility, longevity, and type traits over time in Australian Holstein cattle. *Journal of Dairy Science*, *98*, 7364–7379. <https://doi.org/10.3168/jds.2015-9537>
- Harbison, S. T., McCoy, L. J., & Mackay, T. F. C. (2013). Genome-wide association study of sleep in *Drosophila melanogaster*. *BMC Genomics*, *14*, 281. <https://doi.org/10.1186/1471-2164-14-281>
- Hazel, L. N. (1943). The genetic basis for constructing selection indexes. *Genetics*, *28*, 476–490.
- Hill, W. G., & Mulder, H. A. (2010). Genetic analysis of environmental variation. *Genetical Research*, *92*, 381–395. <https://doi.org/10.1017/S0016672310000546>
- Hill, W. G., & Zhang, X.-S. (2004). Effects on phenotypic variability of directional selection arising through genetic differences in residual variability. *Genetical Research*, *83*, 121–132. <https://doi.org/10.1017/S0016672304006640>
- Hoffmann, A. A., Merilä, J., & Kristensen, T. N. (2016). Heritability and evolvability of fitness and non-fitness traits: Lessons from livestock. *Evolution*, *70*, 1770–1779. <https://doi.org/10.1111/evo.12992>
- Houle, D. (1992). Comparing evolvability and variability of quantitative traits. *Genetics*, *130*, 195–204.
- Hunter, D. C., Pemberton, J. M., Pilkington, J. G., & Morrissey, M. B. (2018). Quantification and decomposition of environment-selection relationships. *Evolution*, *72*, 851–866. <https://doi.org/10.1111/evo.13461>
- Ibáñez, B., Cervantes, I., Gutiérrez, J. P., Goyache, F., & Moreno, E. (2014). Estimates of direct and indirect effects for early juvenile survival in captive populations maintained for conservation purposes: The case of Cuvier's gazelle. *Ecology and Evolution*, *4*, 4117–4129. <https://doi.org/10.1002/ece3.1280>
- Ibáñez-Escriche, N., Sorensen, D., Waagepetersen, R., & Blasco, A. (2008). Selection for environmental variation: A statistical analysis and power calculations to detect response. *Genetics*, *180*, 2209–2226. <https://doi.org/10.1534/genetics.108.091678>
- Jamrozik, J., Schaeffer, L. R., & Weigel, K. A. (2002). Estimates of genetic parameters for single and multiple-country test-day models. *Journal of Dairy Science*, *85*, 3131–3141. [https://doi.org/10.3168/jds.S0022-0302\(02\)74401-9](https://doi.org/10.3168/jds.S0022-0302(02)74401-9)
- Johnston, D. J., Reverter, A., Burrow, H. M., Oddy, V. H., & Robinson, D. L. (2003). Genetic and phenotypic characterisation of animal, carcass, and meat quality traits from temperate and tropically adapted beef breeds. 1. Animal measures. *Australian Journal of Agricultural Research*, *54*, 107–118.
- Johnston, D. J., Reverter, A., Ferguson, D. M., Thompson, J. M., & Burrow, H. M. (2003). Genetic and phenotypic characterisation of animal, carcass, and meat quality traits from temperate and tropically adapted beef breeds. 3. Meat quality traits. *Australian Journal of Agricultural Research*, *54*, 135–147.
- Kingsolver, J. G., Diamond, S. E., Siepielski, A. M., & Carlson, S. M. (2012). Synthetic analyses of phenotypic selection in natural populations: Lessons, limitations and future directions. *Evolutionary Ecology*, *26*, 1101–1118. <https://doi.org/10.1007/s10682-012-9563-5>
- Kingsolver, J. G., Hoekstra, H. E., Hoekstra, J. M., Berrigan, D., Vignieri, S. N., Hill, C. E., ... Beerli, P. (2001). The strength of phenotypic selection in natural populations. *The American Naturalist*, *157*, 245–261. <https://doi.org/10.1086/319193>
- Kruuk, L. E. B., Clutton-Brock, T. H., Slate, J., Pemberton, J. M., Brotherstone, S., & Guinness, F. E. (2000). Heritability of fitness in a wild mammal population. *Proceedings of the National Academy of Sciences of the United States of America*, *97*, 698–703. <https://doi.org/10.1073/pnas.97.2.698>
- Lerner, I. M. (1954). *Genetic homoestasis*. Edinburgh, UK: Oliver & Boyd.
- Lynch, M., & Walsh, B. (1998). *Genetics and analysis of quantitative traits*. Sunderland, MA: Sinauer Assoc.
- Miglior, F., Fleming, A., Malchiodi, F., Brito, L. F., Martin, P., & Baes, C. F. (2017). A 100-year review: Identification and genetic selection of

- economically important traits in dairy cattle. *Journal of Dairy Science*, 100, 10251–10271. <https://doi.org/10.3168/jds.2017-12968>
- Morgante, F., Sørensen, P., Sorensen, D. A., Maltecca, C., & Mackay, T. F. C. (2015). Genetic architecture of micro-environmental plasticity in *Drosophila melanogaster*. *Scientific Reports*, 5, 9785. <https://doi.org/10.1038/srep09785>
- Morrissey, M. B. (2016). Meta-analysis of magnitudes, differences and variation in evolutionary parameters. *Journal of Evolutionary Biology*, 29, 1882–1904. <https://doi.org/10.1111/jeb.12950>
- Mulder, H. A. (2016). Genomic selection improves response to selection in resilience by exploiting genotype by environment interactions. *Frontiers in Genetics*, 7, 178. <https://doi.org/10.3389/fgene.2016.00178>
- Mulder, H. A., Bijma, P., & Hill, W. G. (2007). Prediction of breeding values and selection responses with genetic heterogeneity of environmental variance. *Genetics*, 175, 1895–1910. <https://doi.org/10.1534/genetics.106.063743>
- Mulder, H. A., Bijma, P., & Hill, W. G. (2008). Selection for uniformity in livestock by exploiting genetic heterogeneity of residual variance. *Genetics Selection Evolution*, 40, 37–59.
- Mulder, H. A., Gienapp, P., & Visser, M. E. (2016). Genetic variation in variability: Phenotypic variability of fledging weight and its evolution in a songbird population. *Evolution*, 70, 2004–2016. <https://doi.org/10.1111/evo.13008>
- Mulder, H. A., Hill, W. G., & Knol, E. F. (2015). Heritable environmental variance causes nonlinear relationships between traits: Application to birth weight and stillbirth of pigs. *Genetics*, 199, 1255–1269. <https://doi.org/10.1534/genetics.114.173070>
- Nakagawa, S., Poulin, R., Mengersen, K., Reinhold, K., Engqvist, L., Lagisz, M., & Senior, A. M. (2015). Meta-analysis of variation: Ecological and evolutionary applications and beyond. *Methods in Ecology and Evolution*, 6, 143–152. <https://doi.org/10.1111/2041-210X.12309>
- Ørsted, M., Rohde, P. D., Hoffmann, A. A., Sørensen, P., & Kristensen, T. N. (2018). Environmental variation partitioned into separate heritable components. *Evolution*, 72, 136–152. <https://doi.org/10.1111/evo.13391>
- Rauw, W. M., Johnson, A. K., Gomez-Raya, L., & Dekkers, J. C. M. (2017). A hypothesis and review of the relationship between selection for improved production efficiency, coping behavior, and domestication. *Frontiers in Genetics*, 8, 134. <https://doi.org/10.3389/fgene.2017.00134>
- Rauw, W. M., Kanis, E., Noordhuizen Stassen, E. N., & Grommers, F. J. (1998). Undesirable side effects of selection for high production efficiency in farm animals: A review. *Livestock Production Science*, 56, 15–33. [https://doi.org/10.1016/S0301-6226\(98\)00147-X](https://doi.org/10.1016/S0301-6226(98)00147-X)
- Ravagnolo, O., Misztal, I., & Hoogenboom, G. (2000). Genetic component of heat stress in dairy cattle, development of heat index function. *Journal of Dairy Science*, 83, 2120–2125. [https://doi.org/10.3168/jds.S0022-0302\(00\)75094-6](https://doi.org/10.3168/jds.S0022-0302(00)75094-6)
- Reverter, A., Johnston, D. J., Perry, D., Goddard, M. E., & Burrow, H. M. (2003). Genetic and phenotypic characterisation of animal, carcass, and meat quality traits from temperate and tropically adapted beef breeds. 2. Abattoir carcass traits. *Australian Journal of Agricultural Research*, 54, 119–134. <https://doi.org/10.1071/AR02086>
- Robertson, A., & Rendel, J. M. (1950). The use of progeny testing with artificial insemination in dairy cattle. *Journal of Genetics*, 50, 21–31. <https://doi.org/10.1007/BF02986791>
- Robinson, M. R., Pilkington, J. G., Clutton-Brock, T. H., Pemberton, J. M., & Kruuk, L. E. B. (2008). Environmental heterogeneity generates fluctuating selection on a secondary sexual trait. *Current Biology*, 18, 751–757. <https://doi.org/10.1016/j.cub.2008.04.059>
- Roff, D. A., & Mousseau, T. A. (1987). Quantitative genetics and fitness: Lessons from *Drosophila*. *Heredity*, 58, 103–118. <https://doi.org/10.1038/hdy.1987.15>
- Rowiński, P. K., & Rogell, B. (2017). Environmental stress correlates with increases in both genetic and residual variances: A meta-analysis of animal studies. *Evolution*, 71, 1339–1351. <https://doi.org/10.1111/evo.13201>
- Sanjak, J. S., Sidorenko, J., Robinson, M. R., Thornton, K. R., & Visscher, P. M. (2018). Evidence of directional and stabilizing selection in contemporary humans. *Proceedings of the National Academy of Sciences of the United States of America*, 115, 151–156. <https://doi.org/10.1073/pnas.1707227114>
- Scheu, A., Powell, A., Bollongino, R., Vigne, J.-D., Tresset, A., Çakırlar, C., ... Burger, J. (2015). The genetic prehistory of domesticated cattle from their origin to the spread across Europe. *BMC Genetics*, 16, 54. <https://doi.org/10.1186/s12863-015-0203-2>
- Schou, M. F., Hoffmann, A. A., & Kristensen, T. N. (2019). Genetic correlations and their dependence on environmental similarity—Insights from livestock data. *Evolution*, 73, 1672–1678. <https://doi.org/10.1111/evo.13762>
- Sgrò, C. M., & Hoffmann, A. A. (2004). Genetic correlations, tradeoffs and environmental variation. *Heredity*, 93, 241–248. <https://doi.org/10.1038/sj.hdy.6800532>
- Slatkin, M., & Lande, R. (1976). Niche width in a fluctuating environment - density independent model. *The American Naturalist*, 110, 31–55. <https://doi.org/10.1086/283047>
- Sørensen, P., de los Campos, G., Morgante, F., Mackay, T. F. C., & Sorensen, D. (2015). Genetic control of environmental variation of two quantitative traits of *Drosophila melanogaster* revealed by whole-genome sequencing. *Genetics*, 201, 487–497.
- Soulsbury, C. D., Siitari, H., & Lebigre, C. (2018). Stabilising selection on immune response in male black grouse *Lyrurus tetrix*. *Oecologia*, 186, 405–414. <https://doi.org/10.1007/s00442-017-4014-1>
- Van Valen, L. (1962). A study of fluctuating asymmetry. *Evolution*, 16, 125–142. <https://doi.org/10.1111/j.1558-5646.1962.tb03206.x>
- Waddington, C. H. (1942). Canalization of development and the inheritance of acquired characters. *Nature*, 150, 563–565. <https://doi.org/10.1038/150563a0>
- Yamazaki, T., Takeda, H., Osawa, T., Yamaguchi, S., & Hagiya, K. (2019). Genetic correlations among fertility traits and lactation persistency within and across Holstein herds with different milk production during the first three lactations. *Livestock Science*, 219, 97–103. <https://doi.org/10.1016/j.livsci.2018.12.001>

## SUPPORTING INFORMATION

Additional supporting information may be found online in the Supporting Information section.

**How to cite this article:** Schou MF, Kristensen TN, Hoffmann AA. Patterns of environmental variance across environments and traits in domestic cattle. *Evol Appl*. 2020;13:1090–1102. <https://doi.org/10.1111/eva.12924>