

Available online at www.sciencedirect.com

Integrative Medicine Research

journal homepage: www.imr-journal.com

Original Article

Antiplatelet and antithrombotic effect of *Phyllostachys pubescens* leaves and Mume Fructus combinationWen Yi Jin^a, Seung-Hyung Kim^b, Ho Kyoung Kim^c, Dong Gyu Jang^a, Jeong Bum Nam^d, Young Min Kang^c, Bang Yeon Hwang^d, Dong-Seon Kim^{c,*}^a KOC Biotech Inc., Daejeon 306-791, South Korea^b Institute of Traditional Medicine and Bioscience, Daejeon University, Daejeon 300-716, South Korea^c Basic Herbal Medicine Research Group, Korea Institute of Oriental Medicine, Daejeon 305-811, South Korea^d College of Pharmacy, Chungbuk National University, Cheongju 361-763, South Korea

ARTICLE INFO

Article history:

Received 15 March 2013

Received in revised form

8 April 2013

Accepted 10 April 2013

Available online 23 April 2013

Keywords:

antiplatelet

antithrombosis

blood circulation

herbal combination

Mume Fructus

Phyllostachys pubescens

ABSTRACT

Background: Agents currently used for the treatment and prevention of thrombosis have a number of side effects. We conducted this study to develop antithrombotic agents from herbs that are used in food.

Methods: The 80% (v/v) ethanol extracts of *Phyllostachys pubescens* leaf (PL) and Mume Fructus (MF) and their combinations—2:1 (PM21), 1:1 (PM11), and 1:2 (PM12)—were evaluated on rat platelet aggregation induced by adenosine diphosphate (ADP) *in vitro* and on arteriovenous shunt thrombosis after 3 days of oral treatment in rats *in vivo*.

Results: At 100 $\mu\text{g}/\text{mL}$, PM21 and PM11 inhibited *in vitro* ADP-induced aggregation by $44.0 \pm 4.3\%$ and $30.0 \pm 3.2\%$, respectively, whereas PL, MF, and PM12 weakly or scarcely inhibited ADP-induced aggregation by $3.9 \pm 3.2\%$, $13.0 \pm 2.7\%$, and $5.2 \pm 1.3\%$, respectively. The IC_{50} values of PM21 on ADP-, collagen-, and thrombin-induced platelet aggregations were $135.6 \pm 7.4 \mu\text{g}/\text{mL}$, $142.7 \pm 5.8 \mu\text{g}/\text{mL}$, and $186.5 \pm 9.7 \mu\text{g}/\text{mL}$, respectively. In an *in vivo* rat arteriovenous-shunt thrombosis model, thrombus weight was significantly decreased after the oral administration of 400 mg/kg PL ($27.8 \pm 3.0\%$, $p < 0.01$) or MF ($35.2 \pm 2.1\%$, $p < 0.01$), and with a good accord to the *in vitro* results, the combination of PL and MF in the ratio of 2:1, PM21 ($60.9 \pm 1.2\%$, $p < 0.001$), showed a superior antithrombotic effect to those of individual extracts. At dosages of 200 mg/kg, 100 mg/kg, and 50 mg/kg, PM21 dose-dependently decreased thrombosis weight (ED_{50} , 314 mg/kg).

Conclusion: These results suggest that combination preparations of PL and MF, especially their 2:1 combination, can increase antiplatelet and antithrombotic effects more than PL and MF alone, offering evidence for a potential novel combination antithrombotic therapy.

© 2013 Korea Institute of Oriental Medicine. Published by Elsevier. This is an open access article under the CC BY-NC-ND license (<http://creativecommons.org/licenses/by-nc-nd/4.0/>).

* Corresponding author. Basic Herbal Medicine Research Group, Korea Institute of Oriental Medicine, Daejeon 305-811, South Korea
E-mail address: dskim@kiom.re.kr (D.-S. Kim).

<http://dx.doi.org/10.1016/j.imr.2013.04.005>

2213-4220/© 2013 Korea Institute of Oriental Medicine. Published by Elsevier. This is an open access article under the CC BY-NC-ND license (<http://creativecommons.org/licenses/by-nc-nd/4.0/>).

1. Introduction

Platelet aggregation is a physiological mechanism that seals off the damaged blood vessel wall to prevent blood loss. Various endogenous factors such as collagen, thrombin, adenosine diphosphate (ADP), serotonin, vasopressin, and epinephrine induce platelet activation followed by shape change and aggregation. Under pathological conditions, however, platelets also play a key role in the pathogenesis of coronary cardiovascular diseases, including artery disease and atherosclerosis. Most acute coronary syndromes are caused by platelet adhesion, aggregation, and thrombus formation in areas of ruptured atheromatous plaques.^{1,2} Since the discovery of acetylsalicylic acid, heparin, and warfarin, the use of antiplatelet and anticoagulation agents in the prevention and treatment of cardiac disease, especially during early treatment of acute myocardial infarction, has become widespread. The antiplatelet and antithrombotic agents of many plants such as *Veratrum patulum*,³ sesame seed,⁴ *Magnolia obovata*,⁵ *Angelica sinensis*,⁶ *Ginkgo biloba*,⁷ olive oil,⁸ Korean red ginseng,⁹ mulberries,¹⁰ Common thyme and rosemary,¹¹ *Lavandula hybrida*,¹² onion,¹³ *Glycyrrhiza glabra*,¹⁴ *Gardenia jasminoides*,¹⁵ *Evodia rutaecarpa*,¹⁶ and garlic,¹⁷ have been investigated.

Phyllostachys pubescens, which belongs to the Gramineae family, is an important bamboo species in Korea, Japan, and China. It has been commonly used throughout history in Chinese medicine for treating infections and for many forms of healing. Recently, it has been reported to contain agents of many kinds of biological activities, such as antioxidant activity,¹⁸ antiobesity activity,¹⁹ antitumor activity,²⁰ and antimicrobial activity.²¹

Mume Fructus (MF) is produced by baking unripe fruits, which are gathered at the beginning of summer, until their skins turn black. It has been used in Chinese medicine to astringe the lungs and stop coughing, to restrain the intestines and stop diarrhea, as well as to promote the production of body fluids, and to expel roundworms. It has been reported that MF has antimicrobial activity,²² hypouricemic effect,²³ antibacterial effect,²⁴ antioxidant activity,²⁵ antitumor activity,²⁶ and immune-enhancing effect,²⁷ etc.

The anticoagulant activity,²⁸ antiplatelet aggregation, and antithrombotic activity²⁹ of *P. pubescens* leaves have similarly been reported; however, their combined preparation has not been investigated until now. The aim of the present study was to investigate the ethanol extracts of *Phyllostachys pubescens* leaf (PL) and Mume Fructus (MF), and their combined preparations, on platelet aggregation *in vitro* and on rat arteriovenous (AV) shunt thrombosis *in vivo*.

2. Methods

2.1. Preparation of the ethanol extracts from the plants and their combinations

P. pubescens leaf was collected from Damyang, Korea, on July 27, 2012, and MF was purchased from the Bakjedang Herbal Medicine Shop in Daejeon, Korea. The voucher specimens were identified in the Basic Herbal Medicine Research

Group at the Korea Institute of Oriental Medicine. Authenticated voucher specimens (BL-20120727; MF-20120725) were deposited in the Herbarium of the Korea Institute of Oriental Medicine.

The pulverized *P. pubescens* leaves (100 g) and MF (100 g) were each soaked in 1 L of 80% (v/v) ethanol in water for 5 hours under mantle reflux. The extracts were filtered and then were evaporated under reduced pressure in a rotary evaporator (N-1000 S; EYELA, Tokyo, Japan) to obtain *P. pubescens* leaf extract (PL, 8.7 g) and MF extract (18.9 g). Three combinations of these extracts were prepared as follows: PM21, PM11, and PM12 were formulated by mixing PL and MF at a ratio of 2:1, 1:1, and 1:2, respectively.

2.2. High-performance liquid chromatography analysis of marker compounds

High-performance liquid chromatography (HPLC)-grade reagents, acetonitrile, and water were obtained from J. T. Baker (Phillipsburg, NJ, USA). All other chemicals were of reagent grade.

The sample was analyzed by reverse-phase HPLC using Waters Alliance 2695 system (Waters Co., Milford, MA, USA), coupled with a 2996 photodiode array detector. Phenomenex Luna C18 column (250 × 4.6 mm; particle size 5 μm; Phenomenex, Torrance, CA, USA) was used as the stationary phase, and the mobile phase was composed of 0.1% (v/v) trifluoroacetic aqueous solution (A) and acetonitrile (B). The elution conditions were as follows: at t=0 minute, the mobile phase consisted of 90% A/10% B and was held for 10 minutes. From 10 minutes to 30 minutes, a gradient was applied to 70% A/30% B, which was followed by a wash with 100% B for 5 minutes and a 15-minute equilibration period at 90% A/10% B. The separation temperature was kept at a constant 40 °C throughout the analysis, with a flow rate of 1.0 mL/min and injection volume of 20 μL.

Identification was based on retention time and UV spectra by comparison with commercial standards. For each compound, peak areas were determined at the wavelength providing maximal UV absorbance. Calibration curves of the standards ranging from 1.25 μg/mL to 40 μg/mL (6 levels) for 5-hydroxymethylfurfural and from 12.5 μg/mL to 400 μg/mL (6 levels) for isoorientin revealed good linearity, with R² values exceeding 0.99 (peak areas vs. concentration).

Quantitation was performed on the basis of external standards with a mixture of standards of known concentration that were analyzed in duplicate prior to and after the batch of samples, and the peak areas were used to calculate the sample contents of the compounds.

2.3. Preparations of platelet-rich plasma and platelet aggregation assay

Samples were prepared according to standard practice³⁰⁻³³. SD rat blood (10 mL) was obtained by cardiac puncture (by inserting a 23-gauge needle into the cardiac puncture), and samples were transferred to a 15-mL test tube containing 1 mL citrate phosphate dextrose solution (CPD: 90 mM Na₃ C₆H₅O₇·2H₂O, 14 mM C₆H₈O₇·H₂O, 128.7 mM NaH₂PO₄·H₂O, and 2.55 g/100 mL dextrose).

Platelet-rich plasma (PRP) was obtained after blood sample centrifugation at $170 \times g$ for 5 minutes. The PRP samples were again centrifuged at $120 \times g$ for 5 minutes to remove residual erythrocytes. In order to remove the CPD solution and to isolate the platelets, the PRP was centrifuged twice at $350 \times g$ for 10 minutes, and the supernatant was then isolated as a platelet-poor plasma fraction, which was used as a reference solution in aggregation assays. The platelets of the precipitate were adjusted to the proper number ($10^8/\text{mL}$) for the aggregation assay in Tyrode buffer (137 mM NaCl, 12 mM NaHCO_3 , 5.5 mM glucose, 2 mM KCl, 1 mM MgCl_2 , 0.3 mM NaH_2PO_4 , and $\text{pH}=7.4$). All platelet preparations were conducted at room temperature.

Samples and aspirin were dissolved in a 50% DMSO solution to obtain primary solutions of 0.2 g/L. These were then serially diluted with saline solution to obtain the required concentrations. The control was a saline solution with 0.5% DMSO solution. ADP, collagen, and thrombin (Sigma-Aldrich, St. Louis, MO, USA) were used to induce platelet aggregation. Aggregation was monitored by measuring light transmission via a platelet aggregometer (Chrono-Log corporation, Havertown, PA, USA). The washed platelets were preincubated at 37°C for 5 minutes with either samples or vehicle, and then ADP ($10\ \mu\text{M}$), collagen ($5\ \mu\text{g}/\text{mL}$), or thrombin ($0.5\ \text{unit}/\text{mL}$) was added. The aggregation curves were recorded for 6 minutes. Maximum aggregation was recorded for the control (CA) and for the tests (TA). The inhibition of aggregation (IA) was calculated as: $\text{IA} = (\text{CA} - \text{TA}/\text{CA}) \times 100$.

2.4. In vivo experiments

2.4.1. Animals

Male Sprague–Dawley rats weighing 300–350 g were purchased from Japan SLC (Hamamatsu, Japan). They were kept in a temperature-controlled environment (20°C) with a 12:12-hour light–dark cycle, and were fed with standard chow for at least 1 week prior to the initiation of any testing. Our study was approved by the committee for animal welfare at Daejeon University. Moreover, all animal procedures were conducted in accordance with the guidelines of the Institutional Animal Care and Use Committee of the Korea Research Institute of Bioscience and Biotechnology (Daejeon, South Korea).

2.4.2. Treatments

Rats were orally administered (by gavage) with 400 mg/kg, 200 mg/kg, 100 mg/kg, and 50 mg/kg crude extract dissolved in 0.25% carboxymethylcellulose solution (Sigma) at the same time of the day for 3 consecutive days. The shunt thrombosis model was tested 2 hours after the last administration. Six rats were used for each test.

2.4.3. In vivo effect on a rat model of AV shunt thrombosis

The model tested was a rat AV shunt thrombosis model.³⁴ After anesthesia with urethane ($1.25\ \text{g}/\text{kg}$, i.p.; Sigma), an 8-cm polyethylene tube was inserted between the left jugular vein and the right carotid artery. The saline-filled shunt was assembled by connecting two cannulae with slightly curved 6-cm-long tygon tubing (internal diameter, 2 mm) containing a 5-cm-long cotton thread (diameter, 0.25 mm) that had been scraped with a scalpel blade to make it more

thrombogenic. Extracorporeal circulation was maintained for 15 minutes, during which time a thrombus adhered to the cotton thread. The shunt was then removed and the thread, with its associated thrombus, was withdrawn and was immediately weighed. The thrombus wet weight was then determined by subtracting the weight of the dry 5 cm cotton thread.

2.5. Statistical analysis

Differences between treatment groups were examined using an unpaired Student *t* test. All data are presented as means \pm standard deviation (SD). Differences between groups were considered significant when $p < 0.05$.

3. Results

3.1. Chromatographic separation of PM21

Two marker compounds were determined from major peaks by comparison of retention time and UV spectra on HPLC/PDA chromatogram with commercial standards. As shown in Fig. 1, PLC analysis of PM21 revealed two standards—5-hydroxymethylfurfural and isoorientin—at a retention time of approximately 5.8 minutes and 21.5 minutes. PM21 contained $0.08 \pm 0.01\ \text{mg}/\text{g}$ for 5-hydroxymethylfurfural and $4.8 \pm 0.07\ \text{mg}/\text{g}$ for isoorientin.

3.2. In vitro effect on agonist-induced rat platelet aggregation

The 80% (v/v) ethanol extracts of PL and MF and their combinational preparations of 2:1 (PM21), 1:1 (PM11), and 1:2 (PM12) on ADP-induced platelet aggregation *in vitro* were evaluated using washed rat platelets. At the concentration of $100\ \mu\text{g}/\text{mL}$, PM21 and PM11 inhibited platelet aggregation by $44.0 \pm 4.3\%$ and $30.0 \pm 3.2\%$, respectively, whereas PL, MF, and PM12 weakly or scarcely inhibited platelet aggregation by $3.9 \pm 3.2\%$, $13.0 \pm 2.7\%$, and $5.2 \pm 1.3\%$, respectively, compared to control (Fig. 2). PM21 ($p < 0.001$, to both) and PM11 ($p < 0.001$ and $p < 0.05$, respectively) also showed a significant difference from PL or MF. We further determined the half-maximal inhibitory concentration (IC_{50}) of PM21 on collagen- and thrombin-induced platelet aggregations as well as ADP-induced platelet aggregation. The IC_{50} values of PM21 on ADP-, collagen-, and thrombin-induced platelet aggregations were $135.6 \pm 7.4\ \mu\text{g}/\text{mL}$, $142.7 \pm 5.8\ \mu\text{g}/\text{mL}$, and $186.5 \pm 9.7\ \mu\text{g}/\text{mL}$, respectively.

3.3. In vivo effect on a rat model of AV shunt thrombosis

The AV shunt thrombosis model has been commonly used to assess antithrombotic effects.³⁴ As shown in Fig. 3, after the oral administration of 400 mg/kg of PL or MF, thrombus weight was significantly decreased by $27.8 \pm 3.0\%$ ($p < 0.01$) and $35.2 \pm 2.1\%$, ($p < 0.01$), respectively, and in good agreement with *in vitro* results, the combination of PL and MF in the ratio of 2:1 (PM21; $60.9 \pm 1.2\%$, $p < 0.001$) showed a superior antithrombotic effect compared with that observed

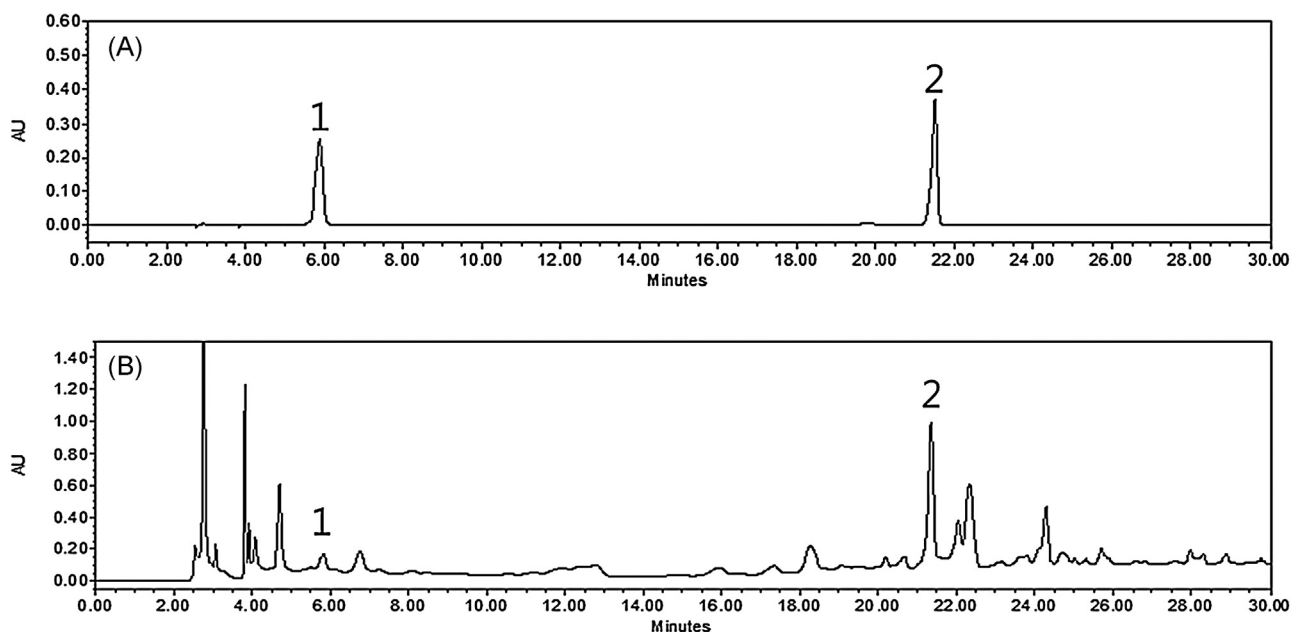


Fig. 1 – HPLC chromatogram of (A) two standards mixture and (B) the 80% (v/v) ethanol extracts combinational preparation PM21 at 280 nm. 5-Hydroxymethylfurfural (1) and isoorientin (2) appeared at a retention time of approximately 5.8 minutes and 21.5 minutes, respectively. PM21 contained 0.08 ± 0.01 mg/g for 5-hydroxymethylfurfural and 4.8 ± 0.07 mg/g for isoorientin. HPLC, high-performance liquid chromatography.

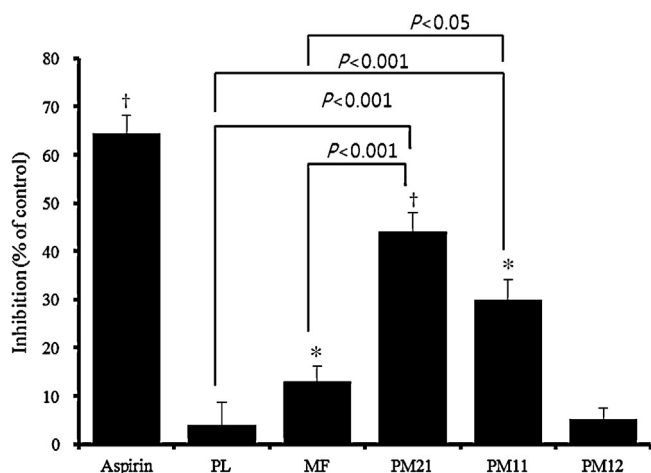


Fig. 2 – Effect of *Phyllostachys pubescens* leaf extract (PL), Mume Fructus extract (MF), and the 2:1, 1:1, and 1:1 combinations (PM21, PM11, and PM12, respectively) from these two extracts on adenosine diphosphate (ADP)-induced rat platelet aggregation *in vitro*. The washed platelets from SD rats were pre-incubated at 37°C for 5 minutes with either samples ($100\ \mu\text{g}/\text{mL}$) or vehicle, and then ADP ($10\ \mu\text{M}$) was added. The aggregation curves were recorded for 6 minutes. Maximum aggregation was recorded for the control (CA) and for the tests (TA). The inhibition of aggregation (IA) was calculated as: $\text{IA} = (\text{CA} - \text{TA}/\text{CA}) \times 100$. Data are presented as mean \pm SD. * $p < 0.05$, † $p < 0.01$.

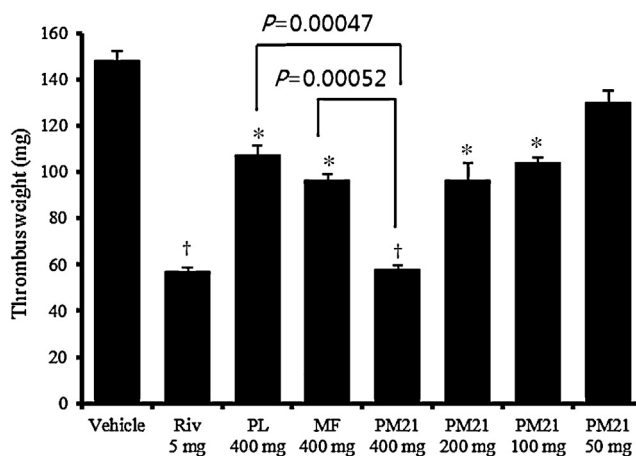


Fig. 3 – Effect of *Phyllostachys pubescens* leaf extract (PL), Mume Fructus extract (MF), and their 2:1 combination (PM21) of these two extracts on AV shunt thrombosis. Rivaroxaban (Riv) was used as a positive control. After anesthesia with urethane, an 8-cm polyethylene tube was inserted between the left jugular vein and the right carotid artery of SD rats. The saline-filled shunt was assembled by connecting two cannulae with slightly curved tubing containing a cotton thread that had been scraped with a scalpel blade to make it more thrombogenic. Extracorporeal circulation was maintained for 15 minutes, during which time a thrombus adhered to the cotton thread. The thrombus wet weight was then determined by subtracting the weight of the dry cotton thread. Data are shown as mean \pm SD. * $p < 0.01$, † $p < 0.001$ versus vehicle control.

for each extract. PM21 also achieved statistical significance, with $p=0.00047$ compared to PL and $p=0.00052$ compared to MF. At the additional dosages of 200 mg/kg, 100 mg/kg, and 50 mg/kg, PM21 dose-dependently decreased the thrombosis weight by $35.2 \pm 5.4\%$ ($p < 0.01$), $29.8 \pm 1.9\%$ ($p < 0.01$), and $12.2 \pm 3.6\%$, respectively, compared to the vehicle control (ED_{50} , 314 mg/kg).

4. Discussion

Arterial thrombi are well known to be largely composed of aggregated platelets. Platelets play a vital role in both the initiation and growth of thrombi. Thus, the inhibition of platelet function represents a promising approach for the prevention of thrombotic disorder. In the present study, PL and MF, which are used in Oriental herbal medicine, and their combination preparations (PM21, PM11, and PM12) were evaluated *in vitro* for their antiplatelet aggregation activity induced by ADP *in vitro*. MF showed weak inhibition, and PL showed scarcely any inhibition at 100 μ g/mL. By contrast, PM21 and PM11 showed significantly higher inhibition compared to PL or MF alone. Park et al²⁹ reported that MF weakly inhibited platelet aggregation, even at a high concentration of 1 mg/mL. The antiplatelet aggregation effect of PL was not previously reported, but the anticoagulant activity, as an intrinsic pathway of activated partial thromboplastin time, had previously been shown to be weak, even at a high concentration of 1.2 mg/mL.²⁸ This study suggests that the antiplatelet effect of PL or MF alone can be significantly increased by their combination.

Antithrombotic therapy has proven to be effective for the treatment of cardiovascular diseases. In the current study, PM21, which showed superior *in vitro* antiplatelet effects among the three combinations, was evaluated for its antithrombotic effect using the rat AV shunt thrombosis model *in vivo*, and in comparison with PL and MF used alone. PM21 showed a significantly ($p < 0.001$) higher antithrombotic effect compared to PL or MF alone. Considering the traditional applications of PL and MF in Oriental medicine, which have mostly been used to nourish the blood and improve blood circulation for the treatment of cardiovascular diseases, the antithrombotic effect of PM21 demonstrated in the present study might provide new evidence for the greater benefit of using this combined approach.

In conclusion, our results suggest that combined preparations of PL and MF, especially at a ratio of 2:1, can increase their antiplatelet and antithrombotic effects than when either agent is used alone, offering experimental evidence for a potential novel combination antithrombotic therapy. Further studies will be conducted to optimize the combination ratio of PL and MF and to investigate their synergistic mechanism.

Conflict of interest

All contributing authors declare no conflict of interest.

Acknowledgments

This work was supported by the Development of Medicinal Food for Blood Circulation Improvement from Oriental Herbal Medicine (project K13202), from the Ministry of Education, Science, and Technology of Korea.

REFERENCES

- Falk E. Plaque rupture with severe pre-existing stenosis precipitating coronary thrombosis. Characteristics of coronary atherosclerotic plaques underlying fatal occlusive thrombi. *Br Heart J* 1983;50:127-34.
- Willerson JT, Golino P, Eidt J, Campbell WB, Buja LM. Specific platelet mediators and unstable coronary artery lesions. Experimental evidence and potential clinical implications. *Circulation* 1989;80:198-205.
- Song Q, Wang S, Zhao W. Total steroidal alkaloids from *Veratrum patulum* L. inhibit platelet aggregation, thrombi formation and decrease bleeding time in rats. *J Ethnopharmacol* 2012;141:183-6.
- Kinugasa C, Naemura A, Hyodo K, Nakai Y, Katsuta M, Yamamoto J. Experimental antithrombotic effects of sesame seed whole grains and extracts. *Blood Coagul Fibrinolysis* 2011;22:526-31.
- Park ES, Lim Y, Lee SH, Kwon BM, Yoo HS, Hong JT, et al. Antiplatelet activity of obovatol, a biphenolic component of *Magnolia obovata*, in rat arterial thrombosis and rabbit platelet aggregation. *J Atheroscler Thromb* 2011;18:659-69.
- Zhang L, Du JR, Wang J, Yu DK, Chen YS, He Y, et al. Z-ligustilide extracted from *Radix Angelica sinensis* decreased platelet aggregation induced by ADP *ex vivo* and arterio-venous shunt thrombosis *in vivo* in rats. *Yakugaku Zasshi* 2009;129:855-9.
- Ryu KH, Han HY, Lee SY, Jeon SD, Im GJ, Lee BY, et al. *Ginkgo biloba* extract enhances antiplatelet and antithrombotic effects of cilostazol without prolongation of bleeding time. *Thromb. Res* 2009;124:328-34.
- Tsantila N, Karantonis HC, Perrea DN, Theocharis SE, Iliopoulos DG, Antonopoulou S, et al. Antithrombotic and antiatherosclerotic properties of olive oil and olive pomace polar extracts in rabbits. *Mediators Inflamm* 2007;2007:36204.
- Jin YR, Yu JY, Lee JJ, You SH, Chung JH, Noh JY, et al. Antithrombotic and antiplatelet activities of Korean red ginseng extract. *Basic Clin Pharmacol Toxicol* 2007;100:170-5.
- Yamatoto J, Naemura A, Ura M, Ijiri Y, Yamashita T, Kurioka A, et al. Testing various fruits and anti-thrombotic effect: I. Mulberries. *Platelets* 2006;17:555-64.
- Yamamoto J, Yamada K, Naemura A, Yamashita T, Arai R. Testing various herbs for antithrombotic effect. *Nutrition* 2005;21:580-7.
- Ballabeni V, Tognolini M, Chiavarini M, Impicciatore M, Bruni R, Bianchi A, et al. Novel antiplatelet and antithrombotic activities of essential oil from *Lavandula hybrida reverchon* "grosso". *Phytomedicine* 2004;11:596-601.
- Yamada K, Naemura A, Sawashita N, Noguchi Y, Yamamoto J. An onion variety has natural antithrombotic effect as assessed by thrombosis/thrombolysis models in rodents. *Thromb. Res* 2004;114:213-20.
- Mendes-Silva W, Assafim M, Ruta B, Monteiro RQ, Guimaraes JA, Zingali RB. Antithrombotic effect of Glycyrrhizin, a plant-derived thrombin inhibitor. *Thromb. Res* 2003;112:93-8.
- Suzuki Y, Kondo K, Ikeda Y, Umemura K. Antithrombotic effect of geniposide and genipin in the mouse thrombosis model. *Planta Med* 2001;67:807-10.

16. Sheu JR, Hung WC, Wu CH, Lee YM, Yen MH. Antithrombotic effect of rutaecarpine, an alkaloid isolated from *Evodia rutaecarpa*, on platelet plug formation in *in vivo* experiments. *Br. J. Haematol* 2000;110:110–5.
17. el-Sabban F, Fahim MA, Radwan GM, Zaghoul SS, Singh S. Garlic preserves patency and delays hyperthermia-induced thrombosis in pial microcirculation. *Int. J. Hyperthermia* 1996;12:513–25.
18. Wu D, Chen J, Lu B, Xiong L, He Y, Zhang Y. Application of near infrared spectroscopy for the rapid determination of antioxidant activity of bamboo leaf extract. *Food Chem* 2012;135:2147–56.
19. Koide CL, Collier AC, Berry MJ, Panee J. The effect of bamboo extract on hepatic biotransforming enzymes—findings from an obese–diabetic mouse model. *J. Ethnopharmacol* 2011;133:37–45.
20. Kuboyama N, Fujii A, Tamura T. antitumor activities of bamboo leaf extracts (BLE) and its lignin (BLL). *Nihon Yakurigaku Zasshi* 1981;77:579–96 [In Japanese, English abstract].
21. Jin YC, Yuan K, Zhang J. Chemical composition, and antioxidant and antimicrobial activities of essential oil of *Phyllostachys heterocyclus cv. pubescens* varieties from China. *Moecules* 2011;16:4318–27.
22. Seneviratne CJ, Wong RW, Hagg U, Chen Y, Herath TD, Samaranyake PL, et al. *Prunus mume* extract exhibits antimicrobial activity against pathogenic oral bacteria. *Int. J. Paediatr. Dent* 2011;21(4):299–305.
23. Yi LT, Li J, Su DX, Dong JF, Li CF. Hypouricemic effect of the methanol extract from *Prunus mume* fruit in mice. *Pharm Biol* 2012;50(11):1423–7.
24. Kwon HA, Kwon YJ, Kwon DY, Lee JH. Evaluation of antibacterial effects of a combination of *Coptis Rhizoma*, *Meme Fructus*, and *Schizandrae Fructus* against *Salmonella*. *Int. J. Food Microbiol* 2008;127:180–3.
25. Matsuda H, Morikawa T, Ishiwada T, Managi H, Kagawa M, Higashi Y, et al. Medicinal flowers: VIII. Radical scavenging constituents from the flowers of *Prunus mume*: structure of prunose III. *Chem. Pharm. Bull* 2003;51:440–3.
26. Shen H, Cheng T, Qiao C, Su Z, Li C. Antitumor effect in vitro and immuno-response in vivo of fructus *Mume*. *Zhongguo Zhong Yao Za Zhi* 1995;20:365–8 [In Chinese, English abstract].
27. Jung BG, Ko JH, Cho SJ, Koh HB, Yoon SR, Han DU, et al. Immune-enhancing effect of fermented *Maesil (Prunus mume)* with probiotics against *Bordetella bronchiseptica* in mice. *J. Vet. Med. Sci* 2010;72:1195–202.
28. Cho E, Kim S, Na I, Kim DC. In MJ, Chae HJ. Antioxidant and anticoagulant activities of water and ethanol extracts of *Phyllostachys pubescens* leaf produced in Geoje. *J Appl Chem* 2010;53:170–3.
29. Park SH, Park KJ, Kim JK. The effects of *Mume Fructus* extracts on blood flow improvement. *Yakhak Hoeji* 2009;53:298–302 [In Korean, English abstract].
30. Bengmark S, Elmer O, Goransson G, Zoucas E. In vitro effect of ethanol on ADP and collagen-induced platelet aggregation. *Thromb Haemast* 1981;46:673–5.
31. Komiya T, Higurashi K, Iizuka K, Mizuno Y. A novel free radical scavenger, nicaraven, inhibits human platelet aggregation in vitro. *Clin. Neuropharmacol* 1999;22:11–4.
32. Rand ML, Packham MA, Kinlough-Rathbone RL, Fraser Mustard J. Effects of ethanol on pathways of platelet aggregation in vitro. *Thromb. Haemost* 1988;59:383–7.
33. Xie ML, Lu Q, Gu ZL. Effect of quercetin on platelet aggregation induced by oxyradicals. *Zhongguo Yao Li Xue Bao* 1996;17:334–6.
34. Perzborn E, Strassburger J, Wilmen A, Pohlmann J, Roehing S, Schlemmer KH, et al. In vitro and in vivo studies of the novel antithrombotic agent BAY 59-7939—an oral, direct factor Xa inhibitor. *J Thromb Haemost* 2005;3:514–21.