

Identification of a *Drosophila* Homologue of α -Catenin and Its Association with the *armadillo* Protein

Hiroki Oda, Tadashi Uemura, Kensuke Shiomi, Akira Nagafuchi,* Shoichiro Tsukita,* and Masatoshi Takeichi

Department of Biophysics, Faculty of Science, Kyoto University, Kitashirakawa, Sakyo-ku, Kyoto 606-01, Japan; * Department of Information Physiology, National Institute for Physiological Sciences, Myodaiji, Okazaki 444, Japan

Abstract. The cadherin cell adhesion system plays a central role in cell-cell adhesion in vertebrates, but its homologues are not identified in the invertebrate. α -Catenins are a group of proteins associated with cadherins, and this association is crucial for the cadherins' function. Here, we report the cloning of a *Drosophila* α -catenin gene by low stringent hybridization with a mouse α E-catenin probe. Isolated cDNAs encoded a 110-kD protein with 60% identity to mouse α E-catenin, and this protein was termed D α -catenin. The gene of this protein was located at the chromosome band 80B. Immunostaining analysis using a mAb

to D α -catenin revealed that it was localized to cell-cell contact sites, expressed throughout development and present in a wide variety of tissues. When this protein was immunoprecipitated from detergent extracts of *Drosophila* embryos or cell lines, several proteins co-precipitated. These included the *armadillo* product which was known to be a *Drosophila* homologue of β -catenin, another cadherin-associated protein in vertebrates, and a 150-kD glycoprotein. These results strongly suggest that *Drosophila* has a cell adhesion machinery homologous to the vertebrate cadherin-catenin system.

CADHERINS are a family of Ca²⁺-dependent cell-cell adhesion receptors identified in vertebrates. Without cadherins, vertebrate cells dissociate and cannot maintain tissues, suggesting a central role in the organization of multicellular structures (for review see Takeichi, 1991). In the invertebrate, however, these molecules have not been identified, and it is even not known whether similar adhesion systems are present. Although some *Drosophila* genes encode proteins that contain sequences characteristic of the cadherins, their intracellular domains and overall size are quite different from those of the vertebrate cadherins (Mahoney et al., 1991; Hortsch and Goodman, 1991; S. Hirano, T. Uemura, and M. Takeichi, unpublished data). The *fat* product is one of these proteins, defined as members of the cadherin superfamily (Mahoney et al., 1991; for review see Magee and Buxton, 1991). *fat* appears to control the growth of imaginal discs, and whether its product has cell adhesion activity is not known. On the other hand, other types of vertebrate cell adhesion receptors or matrix proteins have been shown to be conserved in *Drosophila* (for review see Hortsch and Goodman, 1991). These include the position specific integrins (Bogaert et al., 1987; MacKrell et al., 1988; Leptin et al., 1989), laminin (Montell and Goodman, 1988), and immunoglobulin superfamily molecules (Seeger et al., 1988; Snow et al., 1989; Bieber et al., 1989; Grenningloh et al., 1990).

Vertebrate cadherins associate with a group of cytoplasmic proteins, α , β , and γ -catenin and plakoglobin, via the

cytoplasmic domain (Nagafuchi and Takeichi, 1989; Ozawa et al., 1989; McCrea et al., 1991; Knudsen and Wheelock, 1992). The association with α -catenin is indispensable for cadherins to exhibit cell-cell binding activity. This was shown by using lung carcinoma PC9 cells that expressed E-cadherin and β -catenin, but not α -catenin. While PC9 cells cannot significantly aggregate (Shimoyama et al., 1992), their transfectants with α -catenin cDNA acquire the ability to form epithelioid aggregates using the E-cadherin- α -catenin complex (Hirano et al., 1992). Obviously, the function of cadherins depends on the presence of these cytoplasmic proteins. Recently, one of the *Drosophila* segment polarity genes, *armadillo* (*arm*)¹, was found to encode a homologue of β -catenin or plakoglobin (Peifer and Wieschaus, 1990; McCrea et al., 1991; Peifer et al., 1992). In addition to these findings, two pieces of other information suggest that the cadherin adhesion system may exist in *Drosophila*. First, *Drosophila* cells have well developed adherens junctions (Poody and Schneiderman, 1970) which are similar to the vertebrate structures where cadherins are concentrated (for review see Tsukita et al., 1992). Those *Drosophila* adherens junctions are localized at the apical regions of cell-cell junctions, as found in the vertebrate. Secondly, *Drosophila* embryonic cells possess a Ca²⁺-dependent aggregating property, which resembles that described for vertebrate cells (Gratecos et al., 1990).

1. Abbreviations used in this paper: arm, armadillo; wg, wingless.

In the present study, we attempted to identify *Drosophila* genes that were homologous to cDNA of mouse α E-catenin, a subtype of α -catenins (Nagafuchi et al., 1991; Herrenknecht et al., 1991). Low stringency screening of a *Drosophila* genomic DNA library allowed us to detect a gene encoding a protein which was similar to α -catenins. This protein, termed $D\alpha$ -catenin (*Drosophila* α -catenin), localized at cell-cell contact sites in many *Drosophila* tissues. Most interestingly, *arm* protein co-immunoprecipitated with $D\alpha$ -catenin. These results strongly support the hypothesis that the *Drosophila* has a cell adhesion machinery similar to the vertebrate cadherin system in its molecular organization.

Materials and Methods

Cloning of $D\alpha$ -Catenin cDNA

The 1.5-kb HindIII-EcoRI fragment of mouse α E-catenin, originally termed CAPI02, cDNA (Nagafuchi et al., 1991) was used as a probe to screen the λ DASH *Drosophila* genomic DNA library (made by L. and Y. N. Jan, University of California, San Francisco, CA). This fragment represents the carboxyl half of the molecule. Hybridization solution contained 5 \times SSC, 1 \times Denhardt's solution, 1% SDS, 20 mM sodium phosphate (pH 7.2), 100 μ g/ml salmon sperm DNA, and 10 or 20% formamide. Filters were hybridized with the double-stranded DNA probe at 42°C overnight (longer than 16 h), and washed first with 5 \times SSC at room temperature, then with 5 \times SSC at 42°C and finally with 2 \times SSC at 42°C for 20-min each. One positive clone (λ D2-1) was obtained from 1.5×10^5 recombinants. Within a 14-kb insert of this phage clone, we found that the probe hybridized with a 0.7-kb AccI-XhoI fragment specifically, and partial sequences of the 0.7 kb DNA were shown to be homologous to those of mouse α E-catenin. The 0.7-kb fragment was used to screen several cDNA libraries. cDNA clone λ KZ was isolated from a library of 9–12-h-old embryos (K. Zinn, Pasadena, CA), λ E8 from a library of 3–12-h-old embryos (L. Kauvar and T. Kornberg, University of California, San Francisco, CA), and λ EYE from a library of eye imaginal discs (G. Rubin, University of California, Berkeley, CA). Sequencing double-stranded DNA was carried out using the Sequenase kit (U.S. Biochemical, Cleveland, OH).

For Northern blot analysis, total RNA was extracted by the CHAOS method (Jonas et al., 1985), and selection of poly(A)⁺ RNA was done batchwise using Oligotex (Takara Biochem., Inc., Japan). The RNA was run on formaldehyde gels, blotted onto Hybond N (Amersham Corp., Arlington Heights, IL) and ultraviolet cross-linked (Stratalinker, Stratagene, La Jolla, CA).

Chromosome In Situ Hybridization

To determine cytological position of the $D\alpha$ -catenin gene, the genomic phage clone λ D2-1 was digoxigenin labeled with random primers according to manufacturer's instructions (Boehringer Mannheim Biochemicals, Indianapolis, IN). For hybridization and signal detection, we followed a protocol of T. Tanimura, Kyushu University (T. Tanimura, personal communication).

Preparation of Antibodies to $D\alpha$ -Catenin

Antibodies to $D\alpha$ -catenin were produced by using a fusion protein as an antigen. The 2.0-kb BglIII-EcoRI fragment of a cDNA clone, that includes amino acids 258 to 928 of $D\alpha$ -catenin, was inserted into pGEMEX-1 vector (Promega Biotec, Madison, WI). Expression of the fusion protein was induced by adding isopropyl- β -D-thio-galactopyranoside (0.5 mM) to *Escherichia coli* cultures. Bacteria were disrupted by sonication in 50 mM Tris (pH 7.6) and 150 mM NaCl (TBS), and proteins in the extract were separated by SDS-PAGE. After brief staining with Coomassie blue, a band of the fusion protein was excised and the protein was electroeluted using a Bio-trap elution chamber (Schleicher & Schuell Inc., Keene, NH). The recovered solution was dialyzed against PBS and emulsified with complete Freund adjuvant.

The antigen was intraperitoneally injected into Donryu rats (40–50 μ g antigen per animal). These animals were boosted three times with the antigen mixed with incomplete Freund adjuvant at 3-wk intervals. 4 d after the

last boost, splenocytes of these animals were fused with P3U1 myeloma according to the method of Köhler and Milstein (1975). Hybridoma culture supernatants were screened by immunoblotting for specific reactivity to another $D\alpha$ -catenin fusion protein expressed using a fusion construct that was made by subcloning the 2.0-kb BglIII-EcoRI fragment into pMALcRI vector (NEB). One of the mAbs obtained, DCAT-1, showed the highest affinity to $D\alpha$ -catenin.

Immunoblot Analysis

Proteins were separated by SDS-PAGE (7.5% polyacrylamide) and transferred to nitrocellulose sheets. After incubating the blots with primary antibodies and HRP-linked secondary antibodies, signals were detected by the ECL Western blotting detection system (Amersham Corp.). Blots were repeatedly used by removing antibodies according to manufacturer's instructions. Con A binding assay was performed as described by Brower et al. (1984). Blots were incubated with biotin-Con A (Honen Corp., Japan) at the concentration of 50 μ g/ml. Polyvinylpyrrolidone-360 was used as a blocking agent.

Cell Culture

Drosophila cell line MLDmBG-1 (Hirano et al., 1991) was cultured with modified M3(BF) medium (Ui et al., 1987) that was supplemented with 10% heat-inactivated FCS and 10 μ g/ml insulin. Cells were incubated at 25°C under air.

Immunohistochemistry

MLDmBG-1 cells were fixed with 3.5% paraformaldehyde in C & G's balanced saline (55 mM NaCl, 40 mM KCl, 15 mM MgSO₄, 5 mM CaCl₂, 10 mM Tricine, 20 mM glucose, and 50 mM sucrose, pH 6.9). The fixed cells were rinsed with TBSC (50 mM Tris, pH 7.6, 150 mM NaCl, and 1 mM CaCl₂), treated with 0.3% Triton X-100 in TBSC, and rinsed again with TBSC. The samples were blocked with 1% BSA in TBSC. These samples were then treated with primary antibodies, species-specific biotinylated anti-rat Ig and finally with fluorescent dye-coupled streptavidin. After washing, the samples were mounted in 90% glycerol containing 1 μ g/ml paraphenylenediamine.

Fixation of embryos was performed in 3.5% paraformaldehyde, 0.1 M Pipes (pH 6.9), 2 mM MgSO₄, and 1 mM EGTA; 1.0% NP-40 was added to this solution when fixing larval tissues. The samples were blocked in TBSC containing 0.5% NP-40 and 0.5% BSA. All incubations with antibodies were done in this buffer except that BSA concentration was reduced to 0.1%. For double-immunostaining embryos, Texas red-conjugated anti-rat IgG was used for detecting DCAT-1, and the combination of biotinylated anti-mouse IgG and FITC-conjugated streptavidin was used for anti-*armadillo* mAb 7A1 (a gift of M. Peifer, University of North Carolina, Chapel Hill, NC). All secondary antibodies and fluorescent dye-coupled streptavidins were purchased from Amersham Corp.

Immunoprecipitation

To extract $D\alpha$ -catenin from cultured cells or embryos, we followed the protocol described by Hirano et al. (1992). MLDmBG-1 cells, cultured in a 100 mm dish, were metabolically labeled overnight with 100 μ Ci/ml tran ³⁵S (ICN Biochemicals, Irvine, CA). They were lysed in 1 ml of an extraction buffer containing 1% Triton X-100, 1% NP-40, 1 mM CaCl₂, and mixtures of protease inhibitors, and incubated for 30 min. After centrifugation, 50 μ l of 8% BSA and 60 μ l of 5 M NaCl were added to the supernatant, and this solution was preincubated with 400–500 μ l of Sepharose CL-4B (Pharmacia Fine Chemicals, Piscataway, NJ). After centrifugation, DCAT-1 hybridoma culture supernatant was added to one half of the extract in a ratio of 1:2, and, as a control, a fresh culture medium was added to the other half in the same ratio. After 1 h, 50 μ l of anti-rat IgG-conjugated Sepharose 4B beads (Zymed, S. San Francisco, CA) were added and incubated for 1 h. The immune complexes were washed several times with the extraction buffer without protease inhibitors, and then proteins were released from the beads by boiling for 3 min in 100 μ l of a SDS-PAGE sample buffer containing 5% β -mercaptoethanol. In case of extraction from embryos, about 0.4 g of 0–15 h-old dechorionated embryos were homogenized in 1 ml of the extraction buffer, and, to collect the antigens, Sepharose 4B beads to which DCAT-1 antibodies were directly coupled were used.

A

D α MLQPALPLHCHIIYSPVKEFMLKPDKMGTLTDFGQIALKNDPKNLEIRTSMSVEKTELEPLVLQ 60
 α E M TAVHAGNINFKWDPKSLKLEIRTLAVERRLEPLVLTQ 35
 α N M TSATSPII LKWDPKSLKLEIRTLVERLLEPLVLTQ 34

VTTLVNT KGPSKKKKSKRRASALVAAVEKATENFIQKGEQIAYENPDIQEMLTAVD 118
VTTLVNTNSKGPSNKKRRGRSKKAVHLAASVEQATENFLEKGGKIAKESQFLKEELVVAVE 95
VTTLVNTNSKGPSKKKKGRSKKAVHLAASVEQATQNFLEKGGQIAKESQDLKEELVVAVE 94

EVKKTGDAMSIAAREFSEDPCCSSLRKGNMVRRAARNLLSAVTRLLIADMDVHLLKLSLH 178
DVRKQDGLMKSAAAGEFADPCSSVKRGNMVRRAARLLSPVTRLLIADMDVYKLLVQLK 155
DVRKQGETHRISASEFADPCSSVKGRTMVRRAARLLSAVTRLLIADMDVMRLLSHLK 154

IVEDDLNKLKNASS QDELMDNMROFGRNAGELIKQAARQQEQLKDFQLRDDIAAARAME 237
VVEDGILKLRNAGNEQD LGIQYKALKPEVDKLNIMAAKRQOQLKDVGNRDQMAAARGIL 214
IVFEALFAVKNAATNEQD LANRFKFKGKEMVKLNVAARQQEQLKDFHCRDEMAAARGAL 213

KKHSMLLTASKVYVHRPELDLAKVNRDFILKQVCDVNTISDVAQGGKSSQPTDIYS G 295
QKNVPIIYASQACLQHPDVAAYKANRDLIYKQLQOAVTGISNAAGATASDDAAHQGGGS 274
KKNATMLYASQAFLRHPDVAATRANRDYVFKVQEAIAIGISNAAGATSPTDENKHTG 272

AGELAAALDDFDEGIVMDFMTYSEKRSRQLLEERLESTISAAALMADADCTRDERRERIV 355
GGELAYLNDFKQIIVDPLSFSEERFRPSLEERLESTISGAALMADSSCTRDDRRERIV 334
IGELAAALNEFDNKIILDFMPTSEARFRPSLEERLESTISGAALMADSSCTRDDRRKRIV 332

AECN AVRQALQDLLSEYMNSMOKDNPGLSRATDQCRKTRDLRRLRKAVMHDVSDS 414
AECN AVRQALQDLLSEYMGNAGRKERSDALNSAIDKMTKTRDLRRLRKAVMHDVSDS 393
AECRAVRQALQDLLSEYMNNTGRKKGDPINIATDKMTKTRDLRRLRKAVMHDVSDS 392

FLETTPLLDLIEAAKSGNEKVRKSEIFTKHAEKLVANLVCMSNNEDGVKVMVRYA 474
FLETNVPILVLIIEAAKNGNEKVEKVAQVREHANKLIIEVANLACSIENNEEGVKLVKMS 453
FLETNVPILVLIIEAAKSGNEKVRKSEIFTKHAEKLVANLVCISNNEEGVKLVKMS 452

AAQIESLCPQVINAASIIIVRPNKVAQENMTTYRQAKVEQVRIILTEAVDDITITDQFLA 534
ASQLEALCPQVINAALALAAKQSKLQENMDLFKEQKQVRLTDAVDDITSDQFLA 513
ATQDLSLCPQVINAALTAARPKSQVAQDNDVFKQKQKQVRLTDAVDDITSDQFLS 512

VSENHILEDVNVKVMALQVGDARDLRATAGATIGRSSRVNVEAEMDNYEPCIIYTKRVL 594
VSENHILEDVNVKCVIALQEKDVGDLDRTAGAIRGAAARVIRVVTSEMNDYEPGVYTEKVL 573
VSENHILEDVNVKCVIALQEKDVGDLDRTAGAIRGAAARVIRVIRNEMENYETGVYTEKVL 572

EAVKVLRDQVMKFOQRVGAAGALSNNSKNDVDENDFIDASRLVYDGVREIRRAVLMNR 654
EATKLLSNTVMPCFTEQVEAAVEALSSDPAQPMDENEFIDASRLVYDGIIRDIRKAVLMIR 633
EATKLLSETVMPREAEQVEVAIEALSANVPQPFENEFDASRLVYDGVROIRKAVLMIR 632

SSEDLDTDFEFEPVEDLTLETRSRSSAHTGDDQTVDEYDPSGICTAREAMRMTEDQKOR 714
TPEEL DSDSFEF EDFDV RSRTSVQTED DQIAGQ SARAIMAQLPOEQKAK 683
TPEELDSDSFEQ EDYDV RSRTSVQTED DQIAGQ SARAIMAQLPOEQKAK 683

IAQVELFRREKLTDFSEVAKWDDTGNDDIIFLAKHMCIMMEMTDFTRGKPLKNTSDVI 774
IAEQVASFQEEKSKLDAEVSKNWDSGNDIIVLAKQCMIMMEMTDFTRGKPLKNTSDVI 743
IAEQVEIFHQEKSKLDAEVAKWDDSGNDIIVLAKQCMIMMEMTDFTRGKPLKNTSDVI 743

NAAKKISEAGTKLDKLTREIAEQCPSESTKDDLLAYLQRIALYCHQIQITSKVKADVONI 834
SAAKKTAEAGSRMDKLGRTIADHCPDSACKQDLLAYLQRIALYCHQLNCSKVKAEVONL 803
NAAKKIAEAGSRMDKLARAVADQCPDSACKQDLLAYLQRIALYCHQLNCSKVKAEVONL 803

SGELIVSGDLSATSLIQAAKNLMNAVVLIVKSYVASTKYTR QGT VSSPIVVRMKA 891
GGELVSGVDSMSLIQAANKLMNAVVTVKASYVASTKYKSGMASLNLPAVSWMKA 863
GGELIVSGDLSATSLIQAAKNLMNAVVLIVKASYVASTKYKQVYGTAAVNSEVVSWMKA 863

PEKKPLVREKPEEVRKRVKSGSKRVQNPFIHALSEFQSPADAV 935
PEKKPLVREKQDETOTKIKRASQKHHVNPQALSEFKAM DSI 906
PEKKPLVREKPEEYOTVRVRGSKKHISPVQALSEFKAM DSF 906

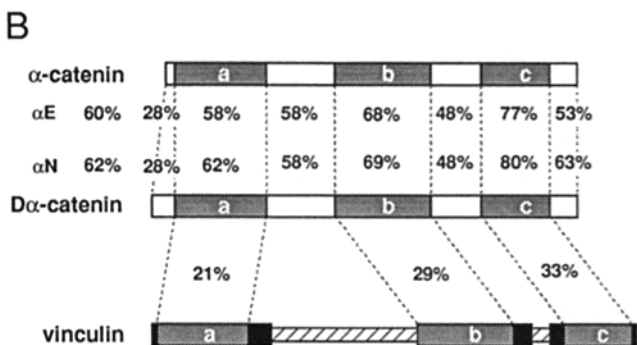


Figure 2. Sequence similarity of D α -catenin to vertebrate α -catenins and vinculin. (A) Alignment of the deduced amino acid sequences of D α -catenin (D α), mouse α E-catenin (α E; Nagafuchi et al., 1991), and chicken α N-catenin (α N; Hirano et al., 1992). Stippled are identical residues between D α and either α E or α N. Three domains which are conserved among α -catenins and vinculin are indicated with underlines. (B) Schematic diagram showing the three conserved regions (a, b, and c). Each α -catenin was divided

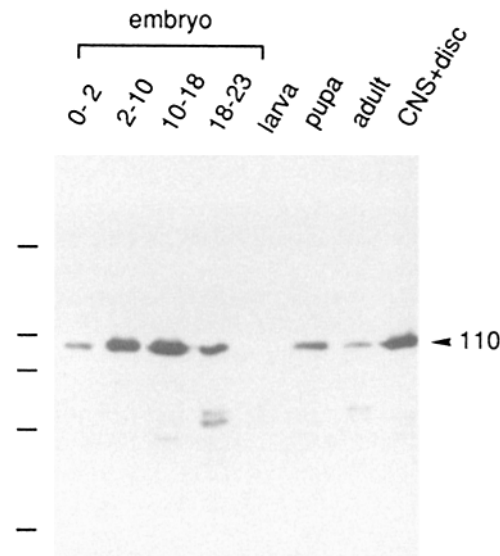


Figure 3. Immunoblot analysis of D α -catenin during development. The same amount of total protein (100 μ g) was loaded in each lane. Although the 110-kD band is hardly detectable in the extract of the whole bodies of late third instar larva (lane larva), a strong signal can be seen in the sample of CNS and imaginal discs (lane CNS+disc) isolated from the larvae. A 70-kD band in the lane of 18–23-h-old embryos appeared to be a degradation product. 110, the 110-kD D α -catenin band. Molecular weight markers for 200, 116, 97, 66, and 45 kD are indicated with bars.

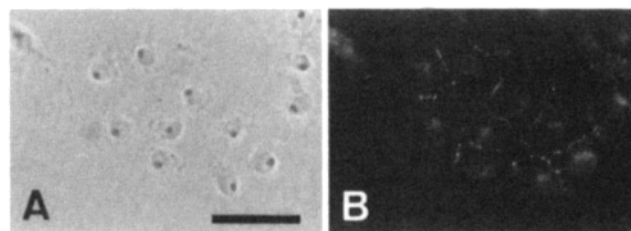


Figure 4. Subcellular localization of D α -catenin in a *Drosophila* cell culture. MLdMBG-1 cells were stained with DCAT-1. (A) Phase-contrast micrograph. (B) Immunofluorescence image of the same field shown in A. D α -catenin molecules are enriched at cell-cell boundaries, not in other parts of the cell surface. Bar, 20 μ m.

the anterior-posterior axis (Fig. 5 D), as reported (Riggleman et al., 1990). In contrast, D α -catenin was distributed rather homogeneously (Fig. 5 C), although we could detect a subtle periodical change of the D α -catenin level along the anterior-posterior axis. At stage 11, cells along the ventral midline strongly expressed both gene products (data not shown). Many differentiated organs of stage 16 embryos, which derived from different germ layers, also reacted with DCAT-1. These included the epidermis, the central nervous system (CNS) (Fig. 5 E), the peripheral nervous system and

into seven segments, and within every segment, identities were calculated between D α and either α E or α N. Percentage figures on the left represent overall identities. Comparison of D α -catenin with chicken vinculin (Coutu and Craig, 1988) are also shown. The domains a, b, and c are included in the three functionally distinct domains of vinculin, respectively (black boxes).

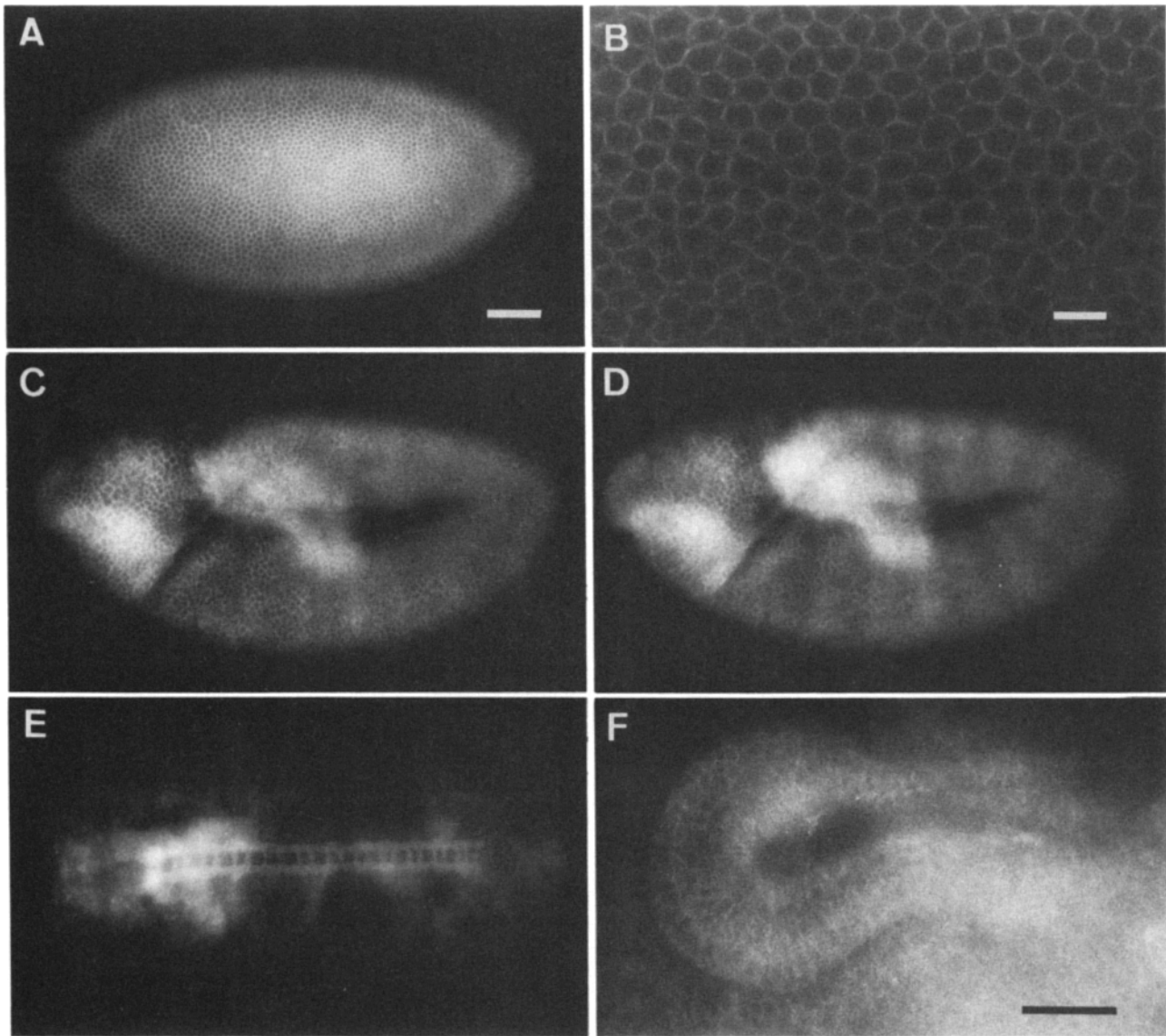


Figure 5. Distribution of $D\alpha$ -catenin during embryogenesis. (*A* and *B*) Cellular blastoderm stage (stage 5). *A* higher magnification clearly demonstrates the accumulation of $D\alpha$ -catenin at cell-cell junctions (*B*). (*C* and *D*) Lateral view of an embryo at stage 9, double-stained with DCAT-1 (*C*), and anti-*armadillo* antibody 7A1 (*D*). (*E*) Ventral view of an embryo at stage 16 stained with DCAT-1. Strong signals in the neuropile of CNS are observed. (*F*) Hindgut in an embryo at stage 16. Left is anterior in all panels. Bars: (*A* and *C-E*) 50 μ m; and (*B* and *F*) 10 μ m.

guts (Fig. 5 *F*). A prominent ladder-like structure in CNS was visualized by this antibody, suggesting that axons were enriched with $D\alpha$ -catenin.

$D\alpha$ -catenin was also found at cell-cell boundaries in many larval tissues. In the leg disc, interfaces of all epithelial cells stained for $D\alpha$ -catenin (Fig. 6, *A* and *B*). The eye disc expressed $D\alpha$ -catenin in a non-uniform fashion (Fig. 6 *C*). In the undifferentiated region in front of the morphogenetic furrow (Tomlinson and Ready, 1987), signals were present ubiquitously, while in the differentiating region, these were highly concentrated in the photoreceptor clusters in the ommatidia. The accumulation of $D\alpha$ -catenin was much stronger at the photoreceptor junctions than at the interfaces of non-neuronal cells such as pigment cells. In the salivary gland duct, sharp $D\alpha$ -catenin-positive cell boundaries were seen (Fig. 6 *D*). These expression patterns of $D\alpha$ -catenin in larval

organs were similar to those previously reported for *arm* protein (Peifer and Wieschaus, 1990).

Co-Immunoprecipitation of $D\alpha$ -Catenin with Other Proteins

In vertebrate cells, α -catenin associates with cadherin, β -catenin and some other proteins, and these proteins can be co-immunoprecipitated as a molecular complex (Nagafuchi and Takeichi, 1989; Ozawa et al., 1989; Nelson et al., 1990; McCrea et al., 1991; Knudsen and Wheelock, 1992). To reveal proteins that may associate with $D\alpha$ -catenin, we immunoprecipitated $D\alpha$ -catenin using DCAT-1 from a detergent extract of MLDmBG-1 cells that had been metabolically labeled with [35 S]methionine. Electrophoresis of the immunoprecipitated materials showed several bands including 150-, 110-, and 106-kD bands (Fig. 7 *A*, *arrows*).

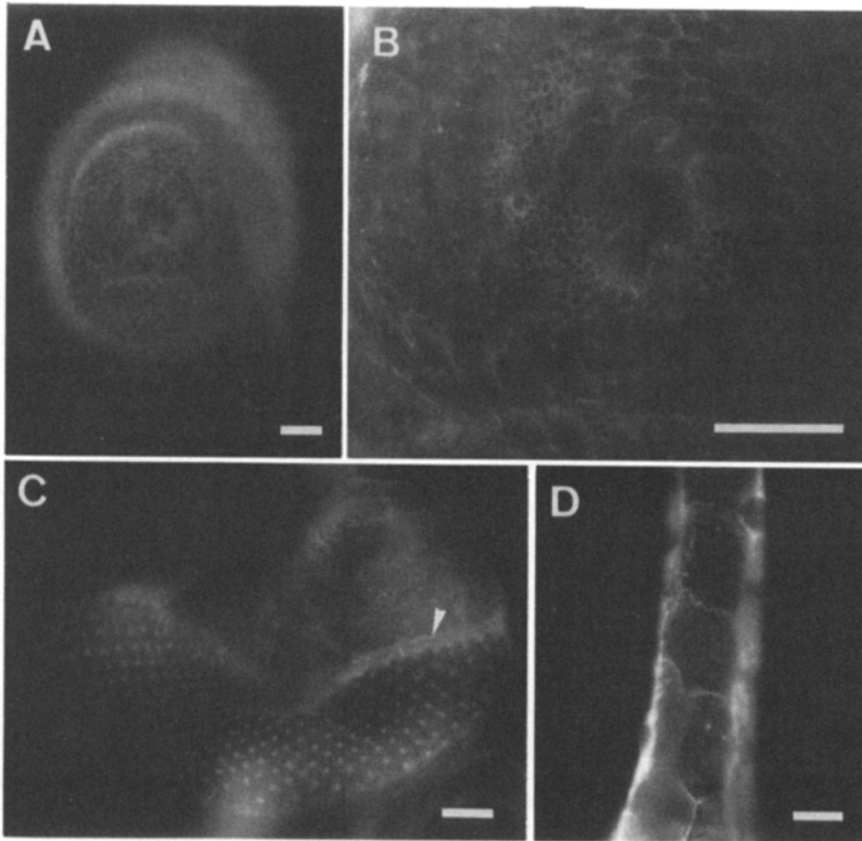


Figure 6. $D\alpha$ -catenin localization in larval tissues. (*A* and *B*) Leg imaginal disc. *A* high magnification of a central region of the same sample is shown in *B*. (*C*) Eye imaginal disc. Arrowhead indicates the morphogenetic furrow (MF), which divides the disc into the posterior (*below*) and the anterior (*above*) regions. In the undifferentiated region anterior to MF, $D\alpha$ -catenin is present homogeneously in all cell-cell borders, while in the differentiated region posterior to MF, it is condensed in the clusters of the photoreceptor cells in the ommatidia. (*D*) Salivary gland duct. Bars, 20 μ m.

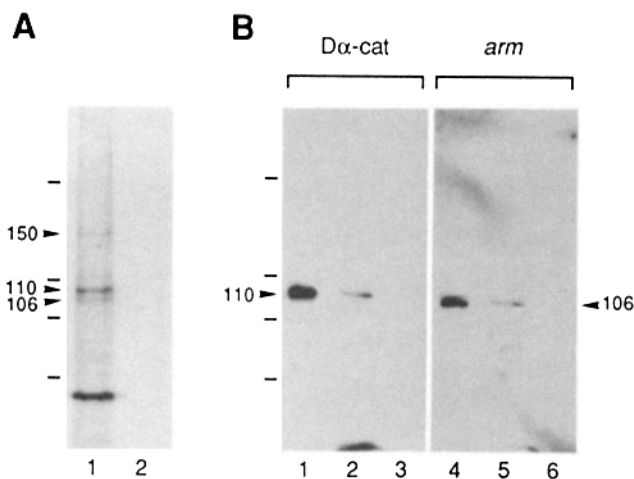


Figure 7. Co-immunoprecipitation of $D\alpha$ -catenin and the *arm* protein from MLDmBG-1 cell lysates. (*A*) Autoradiogram made after SDS-PAGE of an immunoprecipitate obtained with DCAT-1 (lane 1) or with control medium (lane 2) from a lysate of [35 S]methionine-labeled MLDmBG-1 cells. Molecular masses of major proteins are shown. (*B*) Immunoblotting detection of $D\alpha$ -catenin (*left*) and the *armadillo* protein (*right*). Whole MLDmBG-1 cell lysate (lanes 1 and 4), materials precipitated with DCAT-1 (lanes 2 and 5) and those prepared with control medium (lanes 3 and 6) were blotted, and probed with DCAT-1 (*left*) or anti-*arm* antibody 7A1 (*right*). The 106-kD form of the *armadillo* protein co-precipitated with $D\alpha$ -catenin. The same immunoprecipitated samples were used for *A* and *B*. To determine the relationships between the immunoreactive and radiolabeled bands, the filters in *B* were autoradiographed (not shown). Molecular mass markers (200, 116, 97, and 66 kD) are indicated with bars.

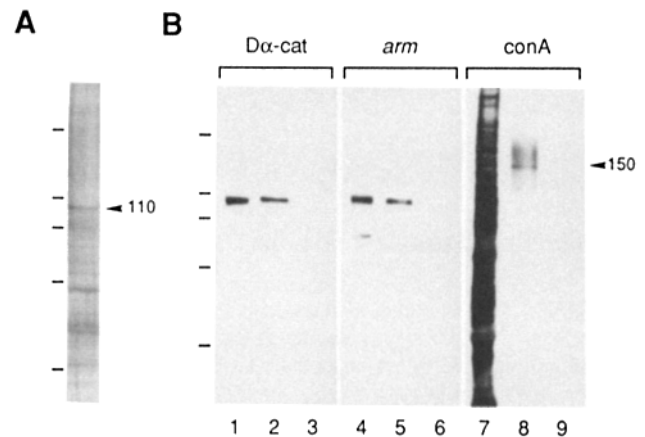


Figure 8. Co-immunoprecipitation of a 150-kD glycoprotein with $D\alpha$ -catenin from 0–15-h-old embryonic lysates. (*A*) Silver-stained pattern of materials immunoprecipitated with DCAT-1. (*B*) Detection of $D\alpha$ -catenin (*left*), the *armadillo* protein (*middle*), and Con A-binding proteins (*right*). Whole embryo lysate (lanes 1, 4, and 7), immunoprecipitate with DCAT-1 (lanes 2, 5, and 8) and control precipitate (lane 3, 6, and 9) were blotted. A 150-kD Con A-reactive band is detected in the immunoprecipitate with DCAT-1. Smear in higher molecular mass regions is not reproducible. Molecular mass markers (200, 116, 97, 66, and 45 kD) are indicated with bars.

To identify these bands, an immunoblot of the precipitated materials was first autoradiographed, and then repeatedly probed with DCAT-1 and an anti-*arm* mAb. On this blot, DCAT-1 recognized a single 110-kD band (Fig. 7 *B*, lane 2) and the anti-*arm* antibody reacted with a 106-kD band (Fig.

7 B, lane 5), that perfectly overlapped with the ^{35}S -labeled 110- and 106-kD proteins, respectively. In crude lysates of MLDmBG-1 cells, the anti-*arm* antibody detected a doublet of 109- and 106-kD bands (Fig. 7 B, lane 4), but the 109-kD form was not reproducibly detected in the materials coprecipitating with $\text{D}\alpha$ -catenin.

We also used extracts of 0–15-h-old embryos for immunoprecipitating $\text{D}\alpha$ -catenin. Fig. 8 A shows a silver-stained gel pattern of proteins precipitated with DCAT-1. As demonstrated in the above experiments, the precipitated materials contained both $\text{D}\alpha$ -catenin and the *arm* product (Fig. 8 B, lanes 2 and 5). On the silver-stained gel, these proteins probably corresponded to the 110-kD band (Fig. 7 C, arrow) and a faint band migrating just in front of the 110-kD band, respectively. All these results suggested a direct or indirect association of $\text{D}\alpha$ -catenin with the *arm* protein. Although a 63-kD protein was efficiently recovered from extracts of both the cell line (Fig. 7 A) and embryos (Fig. 8 A), its identity remains to be studied.

Finally, we tested whether any glycoproteins coprecipitated with $\text{D}\alpha$ -catenin; cadherins are glycosylated and at least E-cadherin is known to be recognized by Con A (McCrea and Gumbiner, 1991). Anti- $\text{D}\alpha$ -catenin immunoprecipitates from embryos contained a prominent Con A-binding protein, the molecular mass of which was 150-kD (Fig. 8 B, lane 8). This protein was not clearly identified at the corresponding position in the silver-stained gel (Fig. 8 A). The sample obtained from MLDmBG-1 cells did not give any Con A-positive bands (data not shown).

Discussion

α -Catenins constitute a small molecular family in vertebrates. At least two members, αE and αN -catenins, have been identified, and vinculin is also a relative of this molecular family (Nagafuchi et al., 1991; Herrenknecht et al., 1991; Hirano et al., 1992). Our recent work demonstrated that α -catenins played crucial roles in cadherin function via an interaction with the cadherin's cytoplasmic domain (Nagafuchi and Takeichi, 1988, 1989; Ozawa et al., 1990). α -Catenin is important not only for cadherin function but also for organizing the multicellular structures (Hirano et al., 1992). In the present study, we identified a *Drosophila* homologue of α -catenin ($\text{D}\alpha$ -catenin) which had 60 and 62% identities to the vertebrate αE and αN , respectively. This high similarity strongly suggests that this *Drosophila* molecule is functionally similar to the vertebrate homologues.

The cellular localization and tissue distribution of $\text{D}\alpha$ -catenin were studied in a cell line, embryos, and larval organs, and all results showed that it was localized at cell-cell junctions. This expression pattern of $\text{D}\alpha$ -catenin was quite similar to that of the *Drosophila* β -catenin homologue *arm*. The only difference we observed was during stage 9 of embryogenesis. While the *arm* protein showed a striped pattern in each parasegment, the distribution of $\text{D}\alpha$ -catenin was rather uniform.

The identification of α - and β -catenin homologues in *Drosophila* strongly supports the idea that *Drosophila* may have a cell adhesion system involving cadherins. In vertebrate cells, αE or αN -catenin is always co-expressed with some type of cadherin. Furthermore, in the present study, we found that $\text{D}\alpha$ -catenin coprecipitated with the *arm* protein.

This provided strong evidence, though circumstantial, for the presence of cadherin homologues in *Drosophila*. In the vertebrate cells so far studied, cadherin, α -, and β -catenins are always co-precipitated as a complex when they are extracted under mild conditions (Nagafuchi and Takeichi, 1989; Ozawa et al., 1989; McCrea and Gumbiner, 1991). We thus suspected that a cadherin-like molecule might coprecipitate with $\text{D}\alpha$ -catenin and *arm* protein.

To test this possibility, we analyzed the materials that immunoprecipitated with the anti- $\text{D}\alpha$ -catenin antibody from two different sources, embryos and a cell line MLDmBG-1. The embryo-derived sample contained a glycoprotein recognized by Con A. Cadherins are glycosylated and at least E-cadherin binds to Con A (McCrea and Gumbiner, 1991). We consider this Con A-reactive protein as a candidate of *Drosophila* cadherin. The immunoprecipitates obtained from the cell line also contained a protein of similar size, but this did not react with Con A. This cell line might have other subclasses of cadherin, as multiple subclasses of cadherin have been identified in vertebrates (Takeichi, 1990). Similar results were obtained when immunoprecipitates with anti-*arm* antibodies were examined for co-precipitation of $\text{D}\alpha$ -catenin and Con A-binding proteins (M. Peifer, personal communication). Future characterizations of these proteins should be most intriguing for identification of hypothetical *Drosophila* cadherins.

armadillo belongs to a subclass of the segment polarity genes. This subclass (*wingless* [*wg*] class) consists of at least eight loci, and mutations in any of these genes cause replacement of the posterior regions of each segment by anterior structures, producing mirror-symmetrical denticle patterns in embryos (Nüsslein-Volhard and Wieschaus, 1980; Wieschaus et al., 1984; Perrimon and Mahowald, 1987; Perrimon et al., 1989). With respect to both axis determination in embryos and development of imaginal discs, *wingless* (*wg*) mutants exhibit a nearly identical phenotype to that of *arm*; therefore, a functional interaction has been assumed (Peifer et al., 1991). Our finding that $\text{D}\alpha$ -catenin physically associates with *arm* protein suggests that $\text{D}\alpha$ -catenin or the putative cadherin with which it associates might play a role in the *wg* signaling pathway. Double immunostaining for $\text{D}\alpha$ -catenin and the *arm* protein in stage 9 embryos showed that their distributions are similar but not identical, indicating that the function of these molecules could be differential. We are currently unable to investigate the function of $\text{D}\alpha$ -catenin by means of genetic analysis, because no promising mutant candidate of this gene is available. We hope in the future to pursue isolation of mutations in the $\text{D}\alpha$ -catenin gene. These mutations, together with those in *arm*, would provide a genetic approach to the roles of these proteins and also the putative cadherin adhesion system in development and multicellular organization of the animals.

We are very grateful to Mark Peifer for anti-*armadillo* antibody, sharing unpublished data and critical comments on the manuscript. We also thank Lily and Yuh Nung Jan, Gerald Rubin, and Kai Zinn for genomic and/or cDNA libraries, and Shinji Hirano and Teiichi Tanimura for technical advice.

This work was supported by research grants from the Ministry of Education, Science and Culture of Japan, and a grant from the Human Frontier Science Program.

Received for publication 1 February 1993 and in revised form 12 March 1993.

References

- Bieber, A. J., P. M. Snow, M. Hortsch, N. H. Patel, J. R. Jacobs, Z. R. Traquina, J. Schilling, and C. S. Goodman. 1989. *Drosophila* neuroglian: a member of the immunoglobulin superfamily with extensive homology to the vertebrate neural adhesion molecule L1. *Cell*. 59:447-460.
- Bogaert, T., N. Brown, and M. Wilcox. 1987. The *Drosophila* PS2 antigen is an invertebrate integrin that, like the fibronectin receptor, becomes localized to muscle attachments. *Cell*. 51:929-940.
- Brower, D. L., M. Wilcox, M. Piovant, R. J. Smith, and L. A. Reger. 1984. Related cell-surface antigens expressed with positional specificity in *Drosophila* imaginal discs. *Proc. Natl. Acad. Sci. USA*. 81:7485-7489.
- Coutu, M. D., and S. W. Craig. 1988. cDNA-derived sequence of chicken embryo vinculin. *Proc. Natl. Acad. Sci. USA*. 85:8535-8539.
- Geiger, B. 1979. A 130K protein from chicken gizzard: its localization at the termini of microfilament bundles in cultured chicken cells. *Cell*. 18:193-205.
- Geiger, B., K. T. Tokuyasu, A. H. Dutton, and S. J. Singer. 1980. Vinculin, an intracellular protein localized at specialized sites where microfilament bundles terminate at cell membranes. *Proc. Natl. Acad. Sci. USA*. 77:4127-4131.
- Gratecos, D., E. Krejci, and M. Semeriva. 1990. Calcium-dependent adhesion of *Drosophila* embryonic cells. *Roux's Arch. Dev. Biol.* 198:411-419.
- Grenningloh, G., A. Bieber, J. Rehm, P. Snow, Z. Traquina, M. Hortsch, N. Patel, and C. S. Goodman. 1990. Molecular genetics of neuronal recognition in *Drosophila*: evolution and function of immunoglobulin superfamily cell adhesion molecules. *Cold Spring Harbor Symp. Quant. Biol.* 55:323-340.
- Herrenknecht, K., M. Ozawa, C. Eckerskorn, F. Lottspeich, M. Lenter, and R. Kemler. 1991. The uvomorulin-anchorage protein a catenin is a vinculin homologue. *Proc. Natl. Acad. Sci. USA*. 88:9156-9160.
- Hirano, S., N. Kimoto, Y. Shimoyama, S. Hirohashi, and M. Takeichi. 1992. Identification of a neural α -catenin as a key regulator of cadherin function and multicellular organization. *Cell*. 70:293-301.
- Hirano, S., K. Ui, T. Miyake, T. Uemura, and M. Takeichi. 1991. *Drosophila* PS integrins recognize vertebrate vitronectin and function as cell-substratum adhesion receptors in vitro. *Development*. 113:1007-1016.
- Hortsch, M., and C. S. Goodman. 1991. Cell and substrate adhesion molecules in *Drosophila*. *Ann. Rev. Cell Biol.* 7:505-557.
- Jonas, E., T. D. Sargent, and I. B. Dawid. 1985. Epidermal keratin gene expressed in embryos of *Xenopus laevis*. *Proc. Natl. Acad. Sci. USA*. 82:5413-5417.
- Knudsen, K. A., and M. J. Wheelock. 1992. Plakoglobin, or an 83-kD homologue distinct from β -catenin, interacts with E-cadherin and N-cadherin. *J. Cell Biol.* 118:671-679.
- Köhler, G., and G. Milstein. 1975. Continuous cultures of fused cells secreting antibody of predefined specificity. *Nature (Lond.)*. 256:495-497.
- Leptin, M., T. Bogaert, R. Lehman, and M. Wilcox. 1989. The function of PS integrins during *Drosophila* embryogenesis. *Cell*. 56:401-406.
- MacKrell, A. J., B. Blumberg, S. R. Haynes, and J. H. Fessler. 1988. The lethal myospheroid gene of *Drosophila* encodes a membrane protein homologous to vertebrate integrin β subunits. *Proc. Natl. Acad. Sci. USA*. 85:2633-2637.
- Magee, A. I., and R. S. Buxton. 1991. Transmembrane molecular assemblies regulated by the greater cadherin family. *Curr. Opin. Cell Biol.* 3:854-861.
- Mahoney, P. A., U. Weber, P. Onofrechuk, H. Biessmann, P. J. Bryant, and C. S. Goodman. 1991. The fat tumor suppressor gene in *Drosophila* encodes a novel member of the cadherin gene superfamily. *Cell*. 67:853-868.
- McCrea, P. D., and B. M. Gumbiner. 1991. Purification of a 92-kDa cytoplasmic protein tightly associated with the cell-cell adhesion molecule E-cadherin (Uvomorulin). *J. Biol. Chem.* 266:4514-4520.
- McCrea, P. D., C. W. Turck, and B. Gumbiner. 1991. A homolog of the armadillo protein in *Drosophila* (Plakoglobin) associated with E-cadherin. *Science (Wash. DC)*. 254:1359-1361.
- Montell, D. J., and C. S. Goodman. 1988. *Drosophila* substrate adhesion molecule: sequence of laminin B1 chain reveals domains of homology with mouse. *Cell*. 53:463-473.
- Nagafuchi, A., and M. Takeichi. 1988. Cell binding function of E-cadherin is regulated by the cytoplasmic domain. *EMBO (Eur. Mol. Biol. Organ.) J.* 7:3679-3684.
- Nagafuchi, A., and M. Takeichi. 1989. Transmembrane control of cadherin-mediated cell adhesion: a 94 kDa protein functionally associated with a specific region of the cytoplasmic domain of E-cadherin. *Cell Regul.* 1:37-44.
- Nagafuchi, A., M. Takeichi, and S. Tsukita. 1991. The 102 kd cadherin-associated protein: similarity to vinculin and posttranscriptional regulation of expression. *Cell*. 65:849-857.
- Nelson, W. J., E. M. Shore, A. Z. Wang, and R. W. Hammerton. 1990. Identification of a membrane-cytoskeletal complex containing the cell adhesion molecule uvomorulin (E-cadherin), ankyrin, and fodrin in Madin-Darby canine kidney epithelial cells. *J. Cell Biol.* 110:349-357.
- Nüsslein-Volhard, C., and E. Wieschaus. 1980. Mutations affecting segment number and polarity in *Drosophila*. *Nature (Lond.)*. 287:795-801.
- Ozawa, M., H. Baribault, and R. Kemler. 1989. The cytoplasmic domain of the cell adhesion molecule uvomorulin associates with three independent proteins structurally related in different species. *EMBO (Eur. Mol. Biol. Organ.) J.* 8:1711-1717.
- Ozawa, M., M. Ringwald, and R. Kemler. 1990. Uvomorulin-catenin complex formation is regulated by a specific domain in the cytoplasmic region of the cell adhesion molecule. *Proc. Natl. Acad. Sci. USA*. 87:4246-4250.
- Peifer, M., P. D. McCrea, K. J. Green, E. Wieschaus, and B. M. Gumbiner. 1992. The vertebrate adhesive junction proteins β -catenin and plakoglobin and the *Drosophila* segment polarity gene armadillo form a multigene family with similar properties. *J. Cell Biol.* 118:681-691.
- Peifer, M., C. Rauskolb, M. Williams, B. Riggelman, and E. Wieschaus. 1991. The segment polarity gene armadillo interacts with the wingless signaling pathway in both embryonic and adult pattern formation. *Development*. 111:1029-1043.
- Peifer, M., and E. Wieschaus. 1990. The segment polarity gene armadillo encodes a functionally modular protein that is the *Drosophila* homolog of human plakoglobin. *Cell*. 63:1167-1178.
- Perrimon, N., L. Engstrom, and A. P. Mahowald. 1989. Zygotic lethals with specific maternal effect phenotypes in *Drosophila melanogaster*. 1. Loci on the X chromosome. *Genetics*. 121:333-352.
- Perrimon, N., and A. P. Mahowald. 1987. Multiple functions of segment polarity genes in *Drosophila*. *Dev. Biol.* 119:587-605.
- Poodry, C. A., and H. A. Schneiderman. 1970. The ultrastructure of the developing leg of *Drosophila melanogaster*. *Roux's Arch. Dev. Biol.* 166:1-44.
- Riggelman, B., P. Schedl, and E. Wieschaus. 1990. Spatial expression of the *Drosophila* segment polarity gene armadillo is posttranscriptionally regulated by wingless. *Cell*. 63:549-560.
- Seeger, M. A., L. Haffley, and T. C. Kaufman. 1988. Characterization of amalgam: a member of the immunoglobulin superfamily from *Drosophila*. *Cell*. 55:589-600.
- Shimoyama, Y., A. Nagafuchi, S. Fujita, M. Gotoh, M. Takeichi, S. Tukita, and S. Hirohashi. 1992. Cadherin dysfunction in a human cancer cell line: possible involvement of loss of α -catenin expression in reduced cell-cell adhesiveness. *Cancer Res.* 52:1-5.
- Snow, P. M., A. J. Bieber, and C. S. Goodman. 1989. Fasciclin III: a novel homophilic adhesion molecule in *Drosophila*. *Cell*. 59:313-323.
- Takeichi, M. 1990. Cadherins: a molecular family important in selective cell-cell adhesion. *Annu. Rev. Biochem.* 59:237-252.
- Takeichi, M. 1991. Cadherin cell adhesion receptors as a morphogenetic regulator. *Science (Wash. DC)*. 251:1451-1455.
- Tomlinson, A., and D. F. Ready. 1987. Neuronal differentiation in the *Drosophila* ommatidium. *Dev. Biol.* 120:336-376.
- Tsukita, S., S. Tsukita, A. Nagafuchi, and S. Yonemura. 1992. Molecular linkage between cadherins and actin filaments in cell-cell adherens junctions. *Curr. Opin. in Cell Biol.* 4:834-839.
- Ui, K., R. Ueda, and T. Miyake. 1987. Cell lines from imaginal discs of *Drosophila melanogaster*. *In Vitro Cell Dev. Biol.* 23:707-711.
- Wieschaus, E., C. Nüsslein-Volhard, and G. Jürgens. 1984. Mutations affecting the pattern of the larval cuticle in *Drosophila melanogaster*: zygotic loci on the X-chromosome and the fourth chromosome. *Roux's Arch. Dev. Biol.* 193:296-307.