



Cancer Treatment by Caryophyllaceae-Type Cyclopeptides

Mohammad Hassan Houshdar Tehrani^{1*}, Mohammadreza Gholibeikian²,
Abdolhamid Bamoniri² and Bi Bi Fatemeh Mirjalili³

¹ Department of Pharmaceutical Chemistry, School of Pharmacy, Shahid Beheshti University of Medical Sciences, Tehran, Iran, ² Department of Organic Chemistry, Faculty of Chemistry, University of Kashan, Kashan, Iran, ³ Department of Chemistry, College of Sciences, Yazd University, Yazd, Iran

OPEN ACCESS

Edited by:

David Vaudry,
Institut National de la Santé et de la
Recherche Médicale (INSERM),
France

Reviewed by:

Wajid Zaman,
University of Chinese Academy of
Sciences, China
Farrokh Ghahremaninejad,
Kharazmi University, Iran
Fazal Ullah,
Chengdu Institute of Biology (CAS),
China

*Correspondence:

Mohammad Hassan Houshdar Tehrani
m_houshdar@sbmu.ac.ir

Specialty section:

This article was submitted to
Neuroendocrine Science,
a section of the journal
Frontiers in Endocrinology

Received: 31 August 2020

Accepted: 17 November 2020

Published: 14 January 2021

Citation:

Houshdar Tehrani MH, Gholibeikian M,
Bamoniri A and Mirjalili BBF (2021)
Cancer Treatment by
Caryophyllaceae-Type Cyclopeptides.
Front. Endocrinol. 11:600856.
doi: 10.3389/fendo.2020.600856

Cancer is one of the leading diseases, which, in the most cases, ends with death and, thus, continues to be a major concern in human beings worldwide. The conventional anticancer agents used in the clinic often face resistance among many cancer diseases. Moreover, heavy financial costs preclude patients from continuing treatment. Bioactive peptides, active in several diverse areas against man's health problems, such as infection, pain, hypertension, and so on, show the potential to be effective in cancer treatment and may offer promise as better candidates for combating cancer. Cyclopeptides, of natural or synthetic origin, have several advantages over other drug molecules with low toxicity and low immunogenicity, and they are easily amenable to several changes in their sequences. Given their many demanded homologues, they have created new hope of discovering better compounds with desired properties in the field of challenging cancer diseases. Caryophyllaceae-type cyclopeptides show several biological activities, including cancer cytotoxicity. These cyclopeptides have been discovered in several plant families but mainly are from the Caryophyllaceae family. In this review, a summary of biological activities found for these cyclopeptides is given; the focus is on the anticancer findings of these peptides. Among these cyclopeptides, information about Dianthins (including Longicalycinin A), isolated from different species of Caryophyllaceae, as well as their synthetic analogues is detailed. Finally, by comparing their structures and cytotoxic activities, finding the common figures of these kinds of cyclopeptides as well as their possible future place in the clinic for cancer treatment is put forward.

Keywords: anticancer activity, Caryophyllaceae-type cyclopeptides, dianthins, longicalycinin A, plant family, synthetic analogues

INTRODUCTION

Cancer cells, often present as malignant tumors, are described as compiled abnormal cells with fast growth and division in an uncontrolled manner (1). They may migrate and invade every part of the body, a phenomenon that is named metastasis (1). Cancer cells do not die, and so apoptosis, a programmed cell death that occurs in normal cells, does not happen in cancerous cells, and as a result, any old, damaged, and defective cells survive and come together with newly born unwanted cells (2). The progression of cancer and its metastasis ultimately ends with patient death. On the

basis of a WHO report, it is estimated that 1 in 6 deaths globally is due to cancer (3). As time passes, the incidence of cancer cases increases year by year such that it will involve 29.5 million people in 2040 (4).

Cancer treatment by traditional chemotherapeutics may have several drawbacks, including the danger of disease recurrence due to emerging resistance to these agents and the appearance of drug side effects during long-term usage (1). Therefore, cancer treatment requires changing of anticancer drug protocols many times, which obviously imposes high costs and a major economic burden on the patients and their relatives (5). The problem is compounded if there are social and emotional pressures on the patients (5).

The successful use of peptides for treating various diseases (6, 7) has attracted researchers to apply these agents to combating cancer (8, 9). That is because peptides have several advantages over other chemotherapeutics. These noticeable characteristics of peptides may be enumerated as good efficacy, high potency, and low immunogenicity (1). Peptides are amenable to many changes in their sequences in a way of showing selective action in targeted cells while causing low toxicity to normal cells (1). In addition, peptides cause low incidence of resistance in malignant cells (10). However, peptides contain some properties that are considered to be disadvantages (1, 9). Among these unfavorable characteristics, low intolerability against lytic enzymes is the most important feature (1). To improve low stability, some strategies have been suggested by researchers (11). These are reordering peptide sequences (12), choosing D-amino acid instead of L-amino acid (13, 14), and converting linear peptide into a cyclized form (15). Cyclization can also cause peptide conformation to become more suitable for binding to a peptide biologically active site (16).

Cyclic peptides (also called cyclopeptides) have many potential therapeutic properties (17) and are suitable to be used as drugs in the clinic (18). The plant cyclopeptides show many attractive biological activities. They are divided into eight types (19). Among them, Caryophyllaceae-type cyclopeptides composed of cyclo di-, penta-, hexa-, hepta-, octa-, nona-, deca-, undeca-, and dodeca-amino acid residues are mounted by more than 200 kinds (20). These cyclopeptides are extracted from several plant families, mainly from Caryophyllaceae. This is a large family of flowering plants that contains approximately 81 genera and 2625 species (21). Discovery of cyclopeptides from Caryophyllaceae dates back to 1959, when the first cyclopeptide, named Cyclolinopeptide A, was

extracted from the seeds of *Linum usitatissimum* (22). It is a potent immunosuppressive agent (23). Since then, Caryophyllaceae-type cyclopeptides, defined as homomonocyclopeptides, have been discovered from higher plants. These peptides show several biological activities, such as antimalarial, antiplatelet, immunomodulating, immunosuppressive, cyclooxygenase inhibitory, tyrosinase and melanogenesis inhibitory, Ca^{2+} antagonism, and estrogen-like and cytotoxic activities (19, 24). Demonstrating various activities, including an anticancer effect, by Caryophyllaceae-type cyclopeptides encouraged us to review and summarize the latest biological findings on these peptides. In this review, the focus is on discussing the cytotoxic action of Caryophyllaceae-type cyclopeptides, especially dianthins and their synthetic analogues. Moreover by this review, attempt will be made to obtain information about the relations between structure and anticancer activity (SAR) of the cyclic peptides, which is useful for finding good candidates among cyclopeptides as anticancer agents with optimum structures for application in the clinic.

SEGETALINS

Discovery of segetalin cyclopeptides from the seeds of *Vaccaria segetalis* (Caryophyllaceae) started in 1994, when the first cyclopeptide, called segetalin A, was isolated, and its structure was proved by instrumental analyses, i.e., two-dimensional nuclear magnetic resonance (2D NMR) and electrospray ionization mass spectrometry (ESI-MS)/MS as well as by chemical and enzymatic hydrolysis methods. The sequence of its structure was found to be cyclo(Ala-Gly-Val-Pro-Val-Trp-). It was shown that this cyclopeptide produces an estrogenic activity on the uterine weight of ovariectomized rats (25). Soon after, the isolation of other segetalins, such as segetalins B, C, and D, was reported from the same plant (26). The estrogenic activity of segetalin B was higher than segetalin A, whereas segetalins C and D did not show such activity noticeably (26). The resemblance of the part of the peptide sequence between segetalin A and segetalin B (Gly-Val and Trp-Ala) was suggested to be the reason for such similar activity. (The peptide sequences are given in **Table 1**.) Discovery of the natural segetalins E, F, G, and H from *Vaccaria segetalis* is documented in several reports (27–30). Further examining the biological activity, segetalins G and H in addition to A and B displayed estrogenic

TABLE 1 | Segetalin cyclopeptides with their sequences and biological activities.

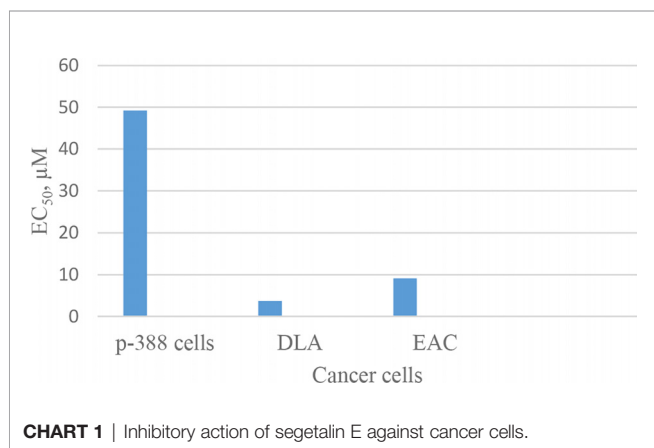
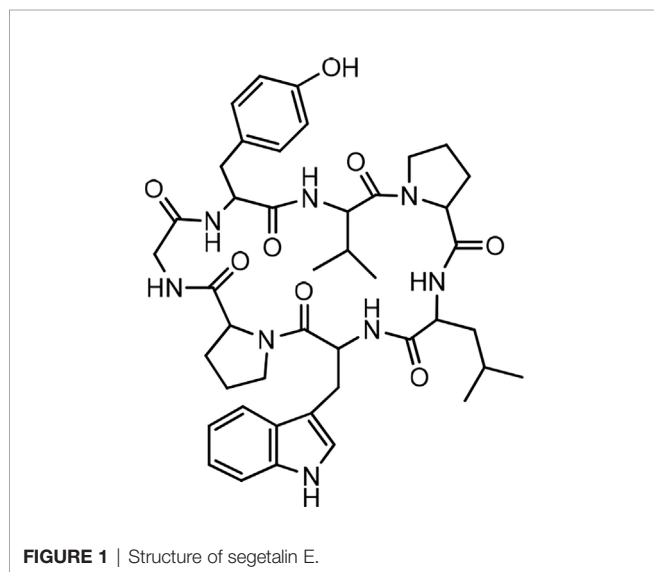
Peptide names	Peptide sequence	Cytotoxic activity	Pharmacological activities	Anti-infective activities
Segetalin A	Cyclo(-Gly-Val-Pro-Val-Trp-Ala-)	—	Estrogenic	
Segetalin B	Cyclo(-Gly-Val-Ala-Trp-Ala-)	—	Estrogenic, Contractile	
Segetalin C	Cyclo(-Gly-Leu-His-Phe-Ala-Phe-Pro-)	—		
Segetalin D	Cyclo(-Gly-Leu-Ser-Phe-Ala-Phe-Pro-)	—		
Segetalin E	Cyclo(-Gly-Tyr-Val-Pro-Leu-Trp-Pro-)	On P-388 cells, DLA cells, EAC cells		Anthelmintic
Segetalin F	Cyclo(-Tyr-Ser-Ser-Lys-Pro-Ser-Ala-Ser)		Vasorelaxant	
Segetalin G	Cyclo(-Gly-Val-Lys-Tyr-Ala)		Estrogenic, Vasorelaxant	
Segetalin H	Cyclo(-Gly-Tyr-Arg-Phe-Ser)		Estrogenic, Vasorelaxant	
Segetalin J	Cyclo(-Phe-Gly-Thr-His-Gly-Leu-Pro-Ala-Pro-)	—		
Segetalin K	Cyclo(-Gly-Arg-Val-Lys-Ala-)	—		

activity in ovariectomized rats (27, 31). It was assumed that this property was due to the kind of sequence as well as conformation of the peptides (31). The sequences of Trp-Ala-Gly-Val or Tyr-Ala-Gly-Val, β -turn occurring, one in segetalin B (between Trp⁴ and Ala⁵) and two in segetalin A (between Trp⁵ and Ala⁶ and between Val² and Pro³) as well as cyclic rather than acyclic shapes of the peptides are important factors in demonstrating estrogenic activity (31). When the biological activity of segetalin E (**Figure 1**) was examined on cancer cells using an MTT (3-(4,5-dimethylthiazol-2-yl)-2,5-diphenyltetrazolium bromide) assay, it was found that segetalin E had moderate inhibitory activity against the growth of lymphocytic leukemia P-388 cells (IC_{50} 40 $\mu\text{g}/\text{mL}^{-1} \approx 49.2 \mu\text{M}$) (32) and higher inhibitory actions against Dalton's lymphoma ascites (DLA) and Ehrlich's ascites carcinoma (EAC) cell lines (with IC_{50} values of 3.71 and 9.11 μM , respectively) (29) (**Chart 1**).

Segetalin E also showed antihelmintic activity against two earthworms *M. konkanensis* and *P. corethruses* by a dose of 2 mg/mL. In another study, the structure as well as absolute stereochemistry of segetalin F were determined by analytical and chemical means (30). In an experiment designed to determine the vasorelaxant activity of segetalins against rat aorta contraction induced by norepinephrine,

some segetalins, i.e., segetalins F, G, and H, isolated from *Vaccaria segetalis*, showed relatively strong relaxant activity, and segetalin B exhibited contractile activity. This interesting finding was interpreted as a result of the basic Lys and Arg residues being present in segetalins F, G, and H, whereas in segetalin B, there is no basic residue; instead, a Trp residue is present (27, 30).

As cyclopeptides may be produced biosynthetically by ribosomal- or nonribosomal-dependent peptide synthases, some authors investigated the biosynthesis of Caryophyllaceae-like cyclopeptides in the developing seeds of *Saponaria vaccaria*. They found that there are genes to encode the precursors of cyclic peptides, which ultimately are cyclized and result in the final products. This finding was further confirmed by expressing a cloned DNA (cDNA) in the roots of transformed *S. vaccaria* to encode a synthetic precursor of segetalin A. During the investigation, the authors predicted the presence of two more segetalins, i.e., segetalins J and K in *S. vaccaria* seeds. The prediction by sequence analysis also revealed the existence of genes for encoding cyclic peptide precursors in *Dianthus caryophyllus* and *Citrus* species (33). The sequences of all segetalins are shown in **Table 1**.



YUNNANININS

In 1994, the isolation of two cyclic peptides, yunnanin A and B, was reported from the root of *Stellaria yunnanensis* (Caryophyllaceae) (34). The peptide structures were confirmed by spectroscopic analysis and chemical methods (34, 35). Yunnanin A showed cytotoxic activity against p-338 cells (36). Yunnanin C, isolated from the root of the same plant (36), as well as yunnanin A, indicated *in vitro* antiproliferative activities against three cell lines—J774.A1 (murine monocyte/macrophage cell line), WEHI-164 (murine fibrosarcoma cell line), and HEK-293 (human epithelial kidney cell line)—after three days of incubation (IC_{50} s ranging from 2.1 to 7.5 $\mu\text{g}/\text{mL}$) (37). Interestingly, the synthetic counterparts of these cyclopeptides did not show the same level of cytotoxicity against the above cell lines (IC_{50} s less than 100 $\mu\text{g}/\text{mL}$). This discrepancy was discussed as it might be as a result of subtle conformational changes of proline units during the synthesis process, which ended by diverse arrangements of proline residues in the synthetic cyclopeptides (37). In another experiment, the synthesized yunnanin A showed weak antimicrobial, anti-inflammatory, and anthelmintic activities (38). Recently, a cyclic analogue of yunnanin A was synthesized by eliminating tyrosine residue and introducing a phthalimide structure instead, inside the ring structure, through photo inducing a single electron transfer reaction (SET) (**Figure 2**). The hydroxyl group attached to the isoindolinone part of the phthalimide structure could have a role similar to the hydroxyl group of the eliminated tyrosine residue. It is shown that this analogue exhibits strong toxicity against HepG-2 and Hela cell lines (IC_{50} s 29.25 $\mu\text{g}/\text{mL}$ and 65.01 $\mu\text{g}/\text{mL}$, respectively) (**Chart 2**). This cytotoxicity had almost no toxic activity against normal cells, L929 cell lines (IC_{50} 203.25 $\mu\text{g}/\text{mL}$) (**Chart 2**). It is suggested that special intramolecular hydrogen binding and γ , β -turn secondary structures of this cyclic peptide analogue could be possible reasons for producing such high activity (39).

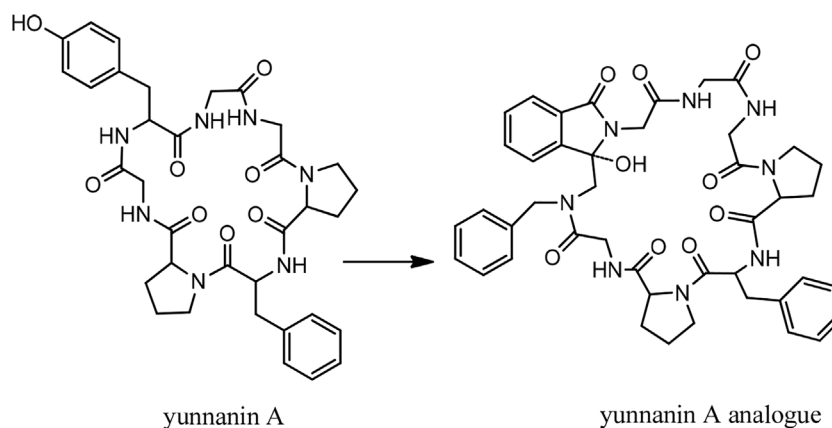


FIGURE 2 | The structure of yunnanin A and its designed analogue.

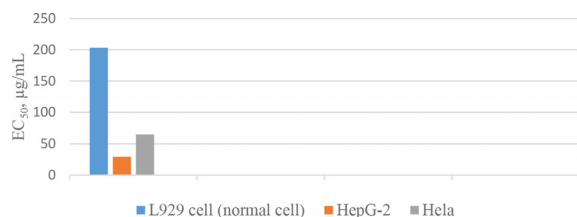


CHART 2 | Inhibitory action of the yunnanin A analogue against cell lines.

On the other hand, the synthesis of yunnanin C was also reconsidered along with the preparation of 9 related mutated analogues by the method of serine/threonine ligation (STL)-mediated cyclization (40). Three other yunnanins, named yunnanins D, E, and F, were isolated from *Stellaria yunnanensis*, and their structures were confirmed by spectroscopic and chemical analysis (41). Later, in 2005, the total synthesis of yunnanin F was reported using a disconnection approach (42). By screening for antimicrobial and pharmacological activities, yunnanin F showed moderate-to-good inhibitory activity against the growth of bacterial

cells and weak activity against fungal cells (42). Meanwhile, this cyclopeptide demonstrated a good anthelmintic activity against earthworms (42). From the point of pharmacological activity, yunnanin F produced moderate anti-inflammatory activity (42). The structures of yunnanin B, C, and D are shown in **Figure 3**. The peptide sequences and information on biological activities of all the yunnanin cyclopeptides are given in **Table 2**.

DICHOTOMINS

Dichotomins A to E were isolated from the roots of *Stellaria dichotoma* L. var. *lanceolata* Bge, and their structures were defined by 2D NMR spectroscopy, X-ray, and chemical analysis (43, 44). In addition, the biological activities of these cyclopeptides were also reported by the same authors. Dichotomins A, B, C, and E demonstrated inhibitory action against the growth of p-388 lymphocytic leukemia cells (IC_{50} s were 2.5, 3.5, 5.0, 2.0 µg/mL, respectively) (**Chart 3**). Interestingly, dichotomin D did not show such activity. It is argued that dichotomins A, B, and C, as hexacyclopeptides, have identical sequences except at the sixth residues. To show similarity between dichotomin E, a pentacyclopeptide, with the three dichotomins A, B, and C, the

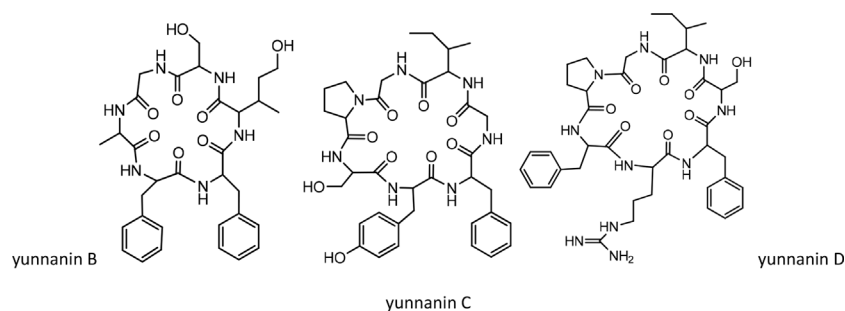
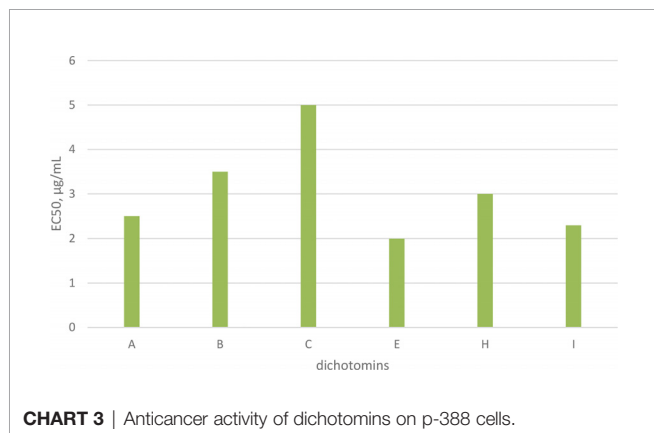


FIGURE 3 | The structures of yunnanin B, C, D.

TABLE 2 | Yunnanin cyclopeptides with their sequences and biological activities.

Peptide names	Peptide sequence	Cytotoxic activity	Pharmacological activities	Anti-infective activities
Yunnanin A	Cyclo(-Gly-Tyr-Gly-Gly-Pro-Phe-Pro)	+	weak anti-inflammatory	weak antimicrobial, anthelmintic
Yunnanin B	Cyclo(-Gly-Ser- δ -HO Ile-Phe-Phe-Ala)	+		
Yunnanin C	Cyclo(-Gly-Ile-Gly-Phe-Tyr-Ser-Pro)	+		
Yunnanin D	Cyclo(-Gly-Ile-Ser-Phe-Arg-Phe-Pro)	+		
Yunnanin E	Cyclo(-Gly-Ser- δ -HO Ile-Phe-Phe-Ser)			
Yunnanin F	Cyclo(-Gly-Val-Thr-Trp-Tyr-Pro-Ser-Ser)		anti-inflammatory	Antimicrobial, anthelmintic



sequence of Tyr-Ala-Phe in dichotomin E was compared with the sequence of Phe-Leu-Tyr in these hexacyclopeptides. By this comparison, a comment was made that a common feature exists as one aliphatic residue is present within two aromatic residues among A, B, C, and E cyclopeptides. Dichotomin D, as a hexacyclopeptide, had neither an identical sequence with the sequence of dichomins A, B, and C nor an aliphatic residue separating two aromatic residues. In fact, the two aromatic residues of dichotomin D were close together. Instead of cytotoxic activity, dichotomin D showed a strong

cyclooxygenase inhibitory action (about 73% inhibition at 100 μ M concentration compared with the control). Dichotomin A did not show activity against cyclooxygenase (44). Later on, dichotomins F and G were isolated from the same plant source, and their structures were confirmed by instrumental and chemical methods (45). Both dichotomin F and G demonstrated inhibitory action on cyclooxygenase. In another report, dichotomins H and I were found from the same plant, and their biological activities were studied (46). Using an MTT assay, dichotomins H and I were shown to have inhibitory activity against the growth of p-388 cells (IC_{50} s 3.0 and 2.3 μ g/mL, respectively) (**Chart 3**). In a further study, dichotomin J, naturally originated from the roots of *Stellaria dichotoma*, was synthesized and screened for antibacterial, antifungal, and anthelmintic activities and compared with the appropriate related standard drugs, such as ciprofloxacin, griseofulvin, and albendazole, respectively. It is shown that this cyclopeptide contains good inhibitory action against bacteria (*S. aureus*, *B. subtilis*) and moderate activity against fungi (*C. albicans*, *A. niger*) in 50 μ g/mL concentration and high killing activity against earthworm (27.65 min, mean death time comparable with 22.78 min mean death time found for albendazole) (47). The structures of anticancer dichotomins are shown in **Figure 4**. The peptide sequences and information on biological activities of all the dichotomin cyclopeptides are given in **Table 3**.

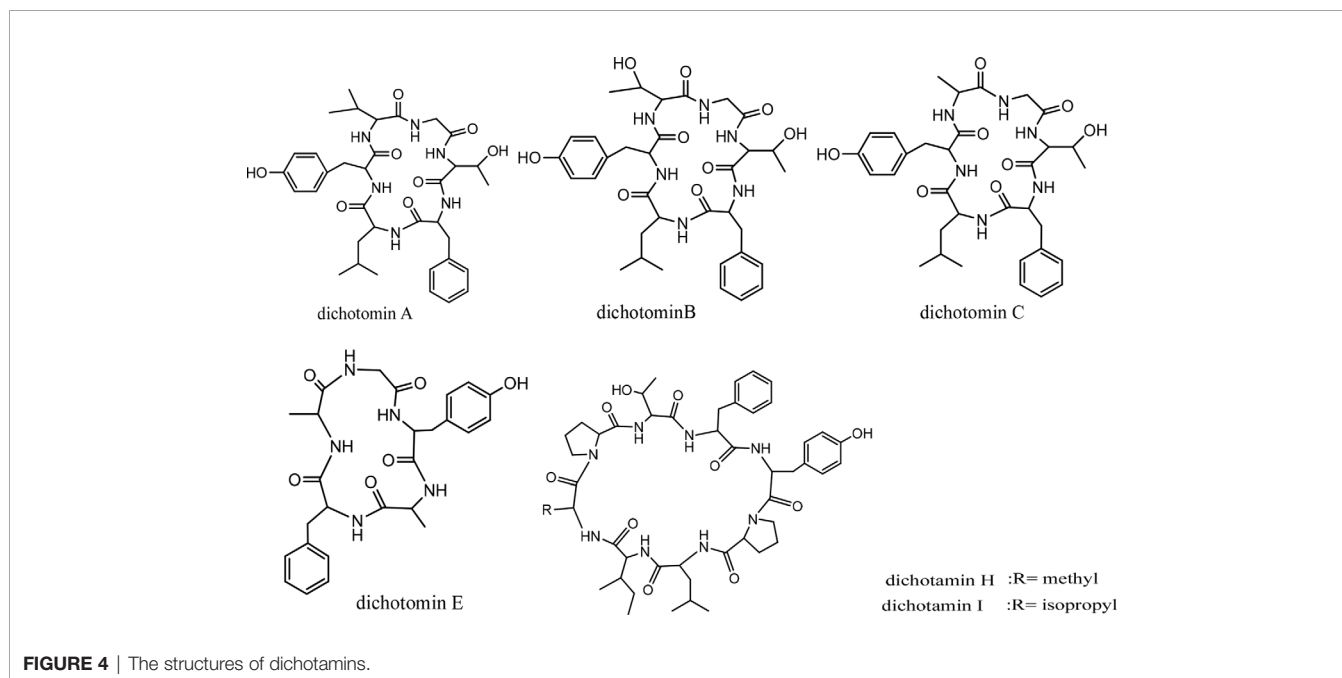
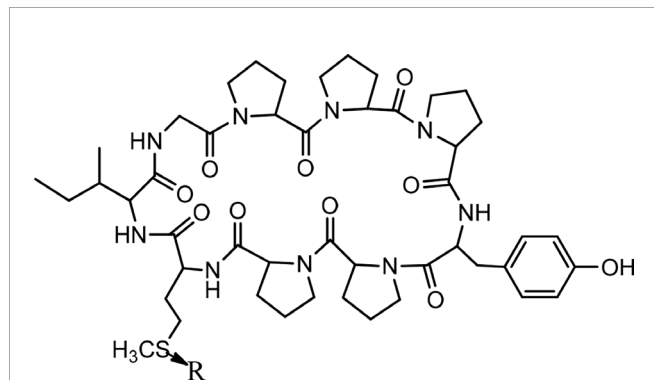
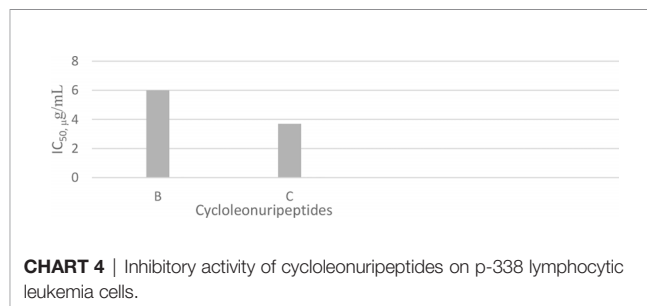


TABLE 3 | Dichotomin cyclopeptides with their sequences and biological activities.

Peptide names	Peptide sequence	Cytotoxic activity	Pharmacological activities	Anti-infective activities
Dichotomin A	Cyclo(-Gly-Thr-Phe-Leu-Tyr-Val)	+		
Dichotomin B	Cyclo(-Gly-Thr-Phe-Leu-Tyr-Thr)	+		
Dichotomin C	Cyclo(-Gly-Thr-Phe-Leu-Tyr-Ala)	+		
Dichotomin D	Cyclo(-Gly-Val-Gly-Phe-Tyr-Ile)		Cyclooxygenase inhibitor	
Dichotomin E	Cyclo(-Gly-Tyr-Ala-Phe-Ala)	+		
Dichotomin F	Cyclo(-Pro-Tyr-Phe-Val-Leu-Pro-Ser-Val-Tyr)		Cyclooxygenase inhibitor	
Dichotomin G	Cyclo(-Pro-Leu-Pro-Ile-Pro-Pro-Phe-Tyr-Ser)		Cyclooxygenase inhibitor	
Dichotomin H	Cyclo(Ala-Pro-Thr-Phe-Tyr-Pro-Leu-Ile)	+		
Dichotomin I	Cyclo(-Val-Pro-Thr-Phe-Tyr-Pro-Leu-Ile)	+		
Dichotomin J	Cyclo(-Gly-Ile-Phe-Leu-Tyr-Ala)			antibacterial, antifungal, anthelmintic

CYCLOLEONURIPETIDES

Cycloleonoripeptides as proline-rich cyclopeptides were discovered from the fruits of *Leonurus heterophyllus* (Labiatae). Cycloleonoripeptides A, B, and C are nonacyclopeptides (Figure 5). Among them, cycloleonoripeptide B is epimer with cycloleonoripeptide C. The structures of these cyclopeptides were elucidated by 2D NMR and chemical analysis (48). The presence of proline residues in the peptide backbone could end with several possible conformations as a result of cis-trans isomerization of amide bonds involving proline. Therefore, conformational analysis of the cyclopeptides were carried out by distance geometry calculation and restrained energy minimization using NMR data. Although five proline residues are present in these peptide sequences, a single stable conformer was observed for them. In addition, it was found that the skeleta of cycloleonoripeptides A, B, and C contain two β -turns (49). Cycloleonoripeptides B and C exhibit inhibitory action on the growth of p-338 lymphocytic leukemia cells (IC_{50} s 6.0 and 3.7 $\mu\text{g}/\text{mL}$, respectively) (Chart 4) (48). Further experiments on the fruit extract of *Leonurus heterophyllus* resulted in the discovery of cycloleonoripeptides D (50), E, and F (51). Cycloleonoripeptide D shows inhibitory action against a cyclooxygenase enzyme, and cycloleonoripeptides E and F demonstrate moderate activities as vasorelaxant agents in rat aorta (50, 51). The peptide sequences and information on biological activities of all the cycloleonoripeptides are given in Table 4.

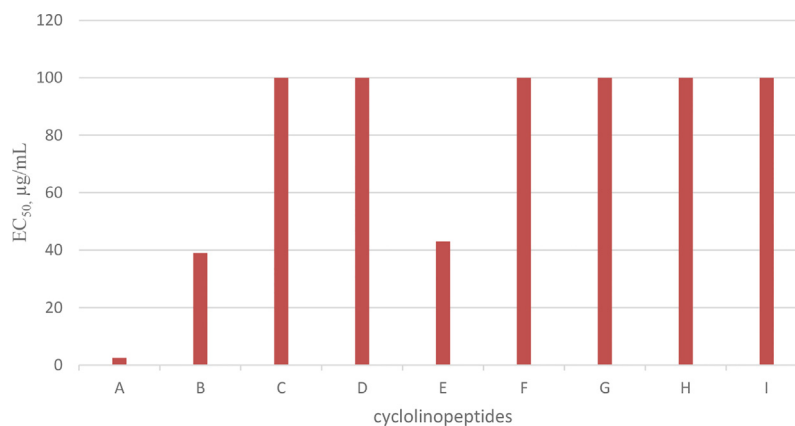
**FIGURE 5** | The structures of cycloleonoripeptides A, (B,C) (R=O). B and C are isomers.**CHART 4** | Inhibitory activity of cycloleonoripeptides on p-338 lymphocytic leukemia cells.

CYCLOLINOPEPTIDES

Cyclolinopeptide A (CLA), as a first natural cyclopeptide, was isolated from the seeds of *Linum usitatissimum* (linseed oil) in 1959 (52). Conformational analysis by NMR shows that cyclolinopeptide A occurs as at least four types of conformers in solution state, and none of them contains hydrogen binding intramolecularly. Therefore, high flexibility of the peptide molecule can result in solution (53). This peptide is active as a potent immunosuppressive compared with cyclosporine A (23). The search for more cyclolinopeptides was followed by the discovery of cyclolinopeptides B–E, and their structures were elucidated by 2D NMR and chemical analysis (54). Studying the biological activities of these cyclopeptides showed that cyclolinopeptide B possesses inhibitory activity against concanavalin A-induced mitogenic response of human peripheral blood lymphocytes (IC_{50} 44 ng/mL), comparable with cyclosporine A (55). Cyclolinopeptides A, B, and E also show moderate inhibition on the proliferation of mouse lymphocyte cells induced by concanavalin A (IC_{50} s 2.5, 39, and 43 $\mu\text{g}/\text{mL}$, respectively) (Chart 5) (54). In contrast, cyclolinopeptides C and D do not give such a level of activity (IC_{50} >100 $\mu\text{g}/\text{mL}$). In another study, four cyclolinopeptides F–I were found in the seeds of *Linum usitatissimum*. The structures of isolated cyclopeptides were determined by instrumental and chemical methods. In addition, the immunosuppressive activity of these compounds was evaluated against mouse splenocytes (56). Cyclolinopeptides F–I also do not show immunosuppressive activity (IC_{50} >100 $\mu\text{g}/\text{mL}$). For these different results between cyclolinopeptides A, B, and C on one hand and cyclolinopeptides C, D, and F–I on the other, it is inferred that the biological activity is very dependent on the sequence as well as conformation of the peptides. To confirm this hypothesis, the three-

TABLE 4 | The sequences of Cycloleonoripeptide cyclopeptides and related biological activities.

Peptide names	Peptide sequence	Cytotoxic activity	Pharmacological activities
Cycloleonoripeptide A	Cyclo(-Gly-Pro-Pro-Pro-Tyr-Pro-Pro-Met-Ile)		
Cycloleonoripeptide B	Cyclo(-Gly-Pro-Pro-Pro-Tyr-Pro-Pro-Met(O)-Ile)	+	
Cycloleonoripeptide C	Cyclo(-Gly-Pro-Pro-Pro-Tyr-Pro-Pro-Met(O)-Ile)	+	
Cycloleonoripeptide D	Cyclo(-Ser-Pro-Pro-Pro-Tyr-Phe-Gln-Thr-Pro-Ile)		Cyclooxygenase inhibitor
Cycloleonoripeptide E	Cyclo(-Ala-Pro-Ile-Val-Ala-Ala-Phe-Thr-Pro)		Vasorelaxant
Cycloleonoripeptide F	Cyclo(-Gly-Tyr-Pro-Leu-Pro-Phe-Tyr-Pro-Pro)		Vasorelaxant

**CHART 5** | Antiproliferative activity of cyclolinopeptides on mouse lymphocyte cells.

dimensional structure of cyclolinopeptide A, studied by X-ray, and its distance geometry calculations were compared with that of cyclolinopeptide B. It was found that, in the solid state, conformation of cyclolinopeptide A was similar to that of the

both cyclopeptides A and B in the solution state (57). The structures of cytotoxic cyclolinopeptides are shown in **Figure 6**. The peptide sequences and information on biological activities of all the cyclolinopeptides are given in **Table 5**.

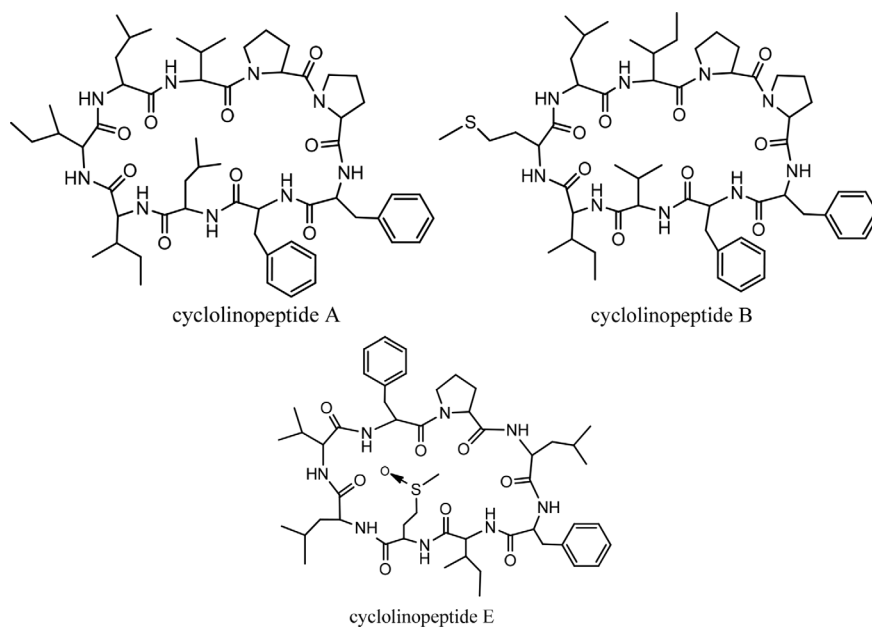
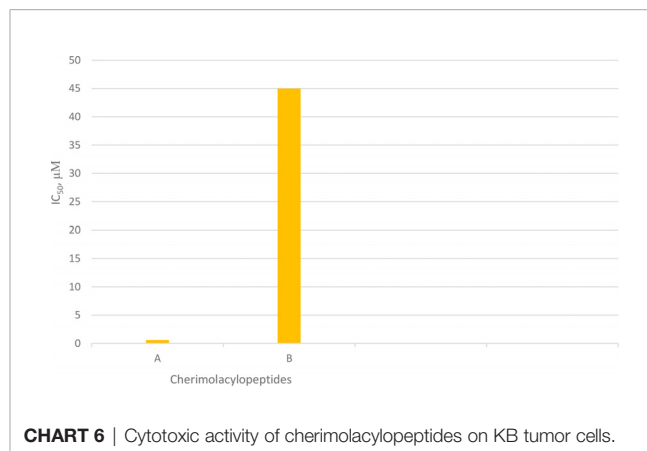
**FIGURE 6** | The structures of cyclolinopeptides.

TABLE 5 | The sequences of cyclolinopeptides and their biological activities.

Peptide names	Peptide sequence	Cytotoxic activity	Pharmacological activities
Cyclolinopeptide A	Cyclo(-Pro-Pro-Phe-Phe-Leu-Ile-Ile-Leu-Val)	+	immunosuppressive
Cyclolinopeptide B	Cyclo(-Pro-Pro-Phe-Phe-Val-Ile-Met-Leu-Ile)	+	immunosuppressive
Cyclolinopeptide C	Cyclo(-Pro-Pro-Phe-Phe-Val-Ile-Met(O)-Leu-Ile)		
Cyclolinopeptide D	Cyclo(-Pro-Phe-Phe-Trp-Ile-Met(O)-Leu)		
Cyclolinopeptide E	Cyclo(-Pro-Leu-Phe-Ile-Met(O)-Leu-Val-Phe)	+	immunosuppressive
Cyclolinopeptide F	Cyclo(-Pro-Phe-Phe-Trp-Val-Met(O)-Leu-Met(O)		
Cyclolinopeptide G	Cyclo(-Pro-Phe-Phe-Trp-Ile-Met(O)-Leu-OMet)		
Cyclolinopeptide H	Cyclo(-Pro-Phe-Phe-Trp-Ile-Met(O)-Leu-Met)		
Cyclolinopeptide I	Cyclo(-Pro-Phe-Phe-Trp-Val-Met-Leu-Met(O))		

CHERIMOLACYCLOPEPTIDES

Cherimolacyclopeptides A and B were isolated from the seeds of *Annona cherimola* Miller. Tandem mass spectrometry and 2D NMR spectroscopy were used to determine the peptide sequences (Figure 7). The solution state structure of cherimolacyclopeptide A was also studied. It is shown that this cyclopeptide contains two β -turns and one new type of β -bulge compared with other cyclopeptides. A cytotoxicity study showed that cherimolacyclopeptide A is a potent cytotoxic agent (IC_{50} 0.6 μ M), but cherimolacyclopeptide B is a weak cytotoxic agent against KB tumor cells (IC_{50} 45 μ M) (Chart 6) (58). The peptide sequences and information on biological activities of cherimolacyclopeptides are given in Table 6.

**CHART 6** | Cytotoxic activity of cherimolacyclopeptides on KB tumor cells.

DIANTHINS

Dianthus is a genus of *Caryophyllaceae* that includes 300 species (59). From some *Dianthus* species, three classes of compounds have been isolated and studied; 1) triterpenoid saponins, called dianosides A and B (60), C-F (61), and G-I (62); 2) dianthin proteins dianthin-30 and dianthin-32 (63) and dianthin-29 (64); and 3) dianthin cyclic peptides A and B (65), C-F (59), G and H (66), and I (67, 68). It should be noted that, because proteins and cyclopeptides of *Dianthus* have the common name of dianthin,

these two different classes must not be confused. In this review, isolation, synthesis, and biological activities of dianthin cyclopeptides are discussed. Discussion of the biological activities is focused on the anticancer activity of these cyclopeptides.

Dianthin Isolation and Synthesis

Historically, the plant *Dianthus superbus* L. has been used in China as a traditional medicine for its several biological activities, including diuretic, anti-inflammatory, urinary anti-infective, and

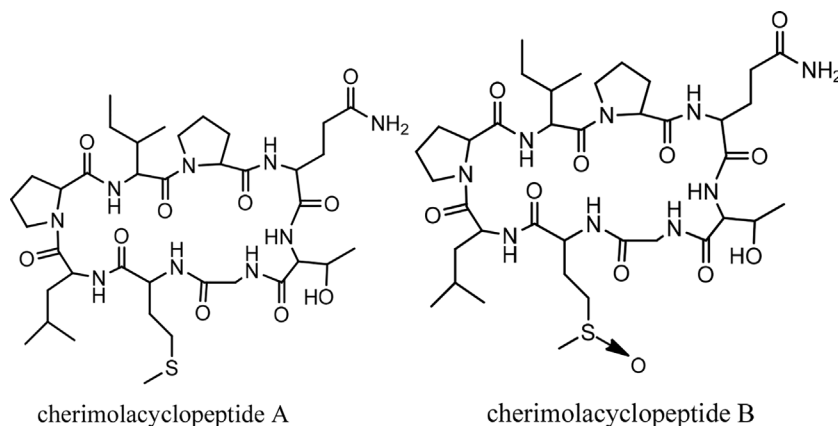
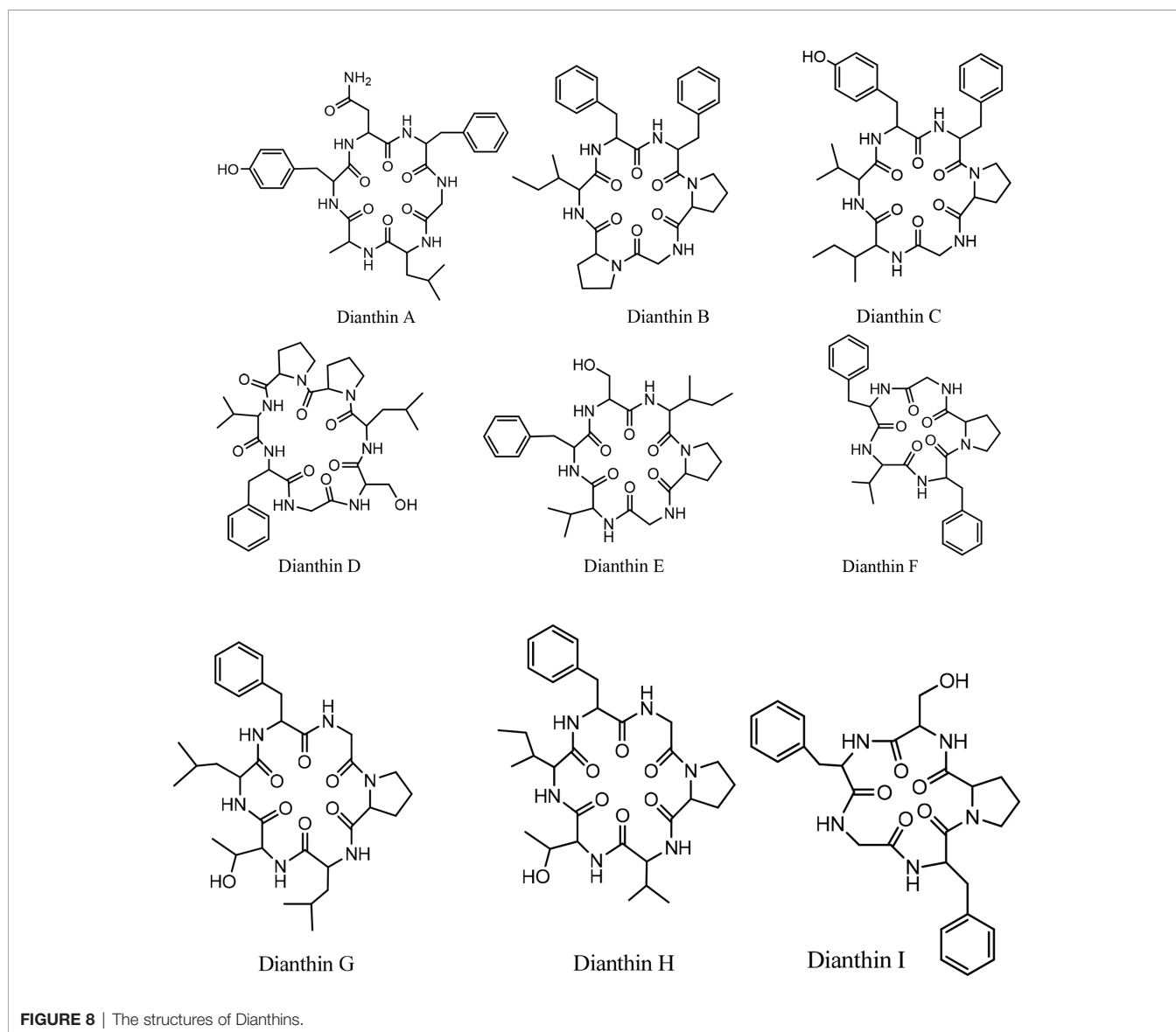
**FIGURE 7** | The structures of cherimolacyclopeptides.

TABLE 6 | The cherimolacyclopeptides, their sequences, and biological activities.

Peptide names	Peptide sequence	Cytotoxic activity
Cherimolacyclopeptide A	Cyclo(-Pro-Gln-Thr-Gly-Met-Leu-Pro-Ile)	+++ (high potency)
Cherimolacyclopeptide B	Cyclo(-Pro-Gln-Thr-Gly-OMt-Leu-Pro-Ile)	+ (low potency)

anticancer effects (69). In an initial study, two cyclopeptides were isolated from this plant, and their structures were determined as cyclo(-Ala-Tyr-Asn-Phe-Gly-Leu) (dianthin A) and cyclo(-Ile-Phe-Phe-Pro-Gly-Pro) (dianthin B), using instrumental analysis (65). In the following study, four cyclopeptides, dianthins C, D, E, and F, are isolated from the extract of the same plant, and their structures are documented by mass spectrometry, 2D NMR analysis, and some chemical methods (59). In this study cytotoxicity of dianthin E is

also reported. In another study, two other cyclopeptides are identified from the extract of *Dianthus superbus* by employing ESI tandem mass fragmentation, 2D NMR analysis, and X-ray diffraction (28). The proliferative activities of dianthins G and H are also evaluated in this study. A few years ago, the isolation of a new cyclopeptide named dianthin I was reported from *Dianthus chinensis*, and its structure was determined (67). From *Dianthus superbus* var. *longicalycinus*, along with six other known compounds, a cyclopeptide called longicalycinin A was isolated and its structure identified by instrumental analysis and reported as cyclo(-Gly-Phe-Tyr-Pro-Phe) (**Figure 1**). The biological evaluation of this compound shows its cytotoxicity against the HepG2 cancer cell line (70). So far, there are no other reports on the discovery of new longicalycinin although total synthesis of this and some other cyclopeptides from *Dianthus superbus* has been documented in several studies (71–75). The structures of dianthins and longicalycinin A are presented in **Figures 8** and **9**. The peptide



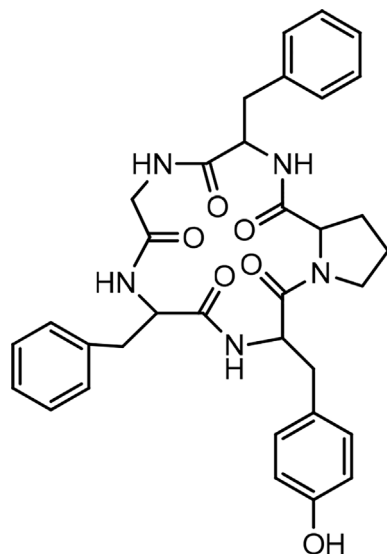


FIGURE 9 | Structure of Longicalycinin A.

sequences and information on biological activities of dianthins and longicalycinin A are given in **Table 7**.

Synthesis of Dianthins

Dianthin A, also called cyclopolypeptide (XIII), was synthesized through several chemical steps using a solution phase peptide synthesis strategy (71). The synthesis of dianthin I by the solid phase method was reported by a group of scientists (68). The synthesis of longicalycinin A was also reported through solution phase (72) as well as solid phase methods (73, 74). In addition, several analogues of longicalycinin A were synthesized in order to achieve information about relationships between structure and activity of this cyclopeptide (74). For the synthesis of longicalycinin A analogues, a two-step synthesis strategy was chosen. To explain more, linear peptides at first were synthesized on 2-chlorotrityl (2-CTC) resin and then detached from the resin as protected peptides in the partial cleavage step. In the second step, final deprotection was applied in the solution phase in order to achieve fully unprotected linear peptides. For preparing cyclic peptide analogues, after cleaving protected linear peptides from

the resin, conditions for peptide cyclization were employed in the solution phase followed by final deprotection. The reaction product was then solidified in cold diethyl ether. In the other effort, linear and cyclic heptapeptide analogues of longicalycinin A were also synthesized by employing two cysteine molecules (75). The cysteine molecules were added as one at the C-terminal and the other at the N-terminal position of the longicalycinin A linear peptide analogues. In this experiment, the peptide cyclization was performed in an oxidation condition in order to make a disulfide bond between two SH groups of cysteine residues of the linear peptides.

Biological Activities of Dianthin Cyclopeptides

Various biological activities have been reported in the literature concerning dianthins A–I and longicalycinin A. The studies were made on the evaluation of antiprotozoal, antifungal, antidiuretic, anti-inflammatory, and anticancer activities of these cyclopeptides. The survey of these studies is presented as follows.

Anticancer Activity of Dianthins

As previously mentioned, *Dianthus superbis*, a genus of plant family *Caryophyllaceae*, has been used for anticancer activity (69, 70). In one study, the antioxidant activity (free radical scavenging ability) and cytotoxic effect of several fractions from an ethanol extract of *Dianthus superbis* on three human cancerous cell lines, HepG2, HeLa, and Bel-7402, were reported (76). It was demonstrated that, among these fractions, the ethyl acetate part containing a high content of phenolic compounds with high reducing ability showed the most antioxidant activity. Using the MTT assay, the ethyl acetate part also showed considerable cytotoxicity (IC_{50} 20–36 $\mu\text{g/mL}$) against the three cell lines. In the other study, by employing the ethyl acetate fraction, apoptotic activation was observed in the HepG2 cell line (77). Treating with 80 $\mu\text{g/mL}$ of the fraction over 24 h caused a considerable increase in the percentage of cells in the sub-G1 phase in which a high amount of apoptotic nuclear fragment bodies was seen. In a further experiment exposing HepG2 cells to the ethyl acetate fraction for 48 h, it was shown that the expressions of Bcl-2 and NF- κ B were suppressed, and the amount of cytochrome c was increased in cytosol due to the release from mitochondria. Caspases-9 and -3 were also activated. All these data infer that the ethyl acetate fraction of the ethanol extract of *Dianthus superbis* induces apoptotic phenomena in Hep-G2 cells by a

TABLE 7 | Dianthins, their sequences, and biological activities.

Peptide names	Sequence	Anticancer activity	Pharmacological activities	Anti-infective activities
Dianthin A	cyclo-(Ala-Tyr-Asn-Phe-Gly-Leu)	+		Anthelmintic Antifungal
Dianthin B	cyclo-(Ile-Phe-Phe-Pro-Gly-Pro)			
Dianthin C	cyclo-(Gly-Pro-Phe-Tyr-Val-Ile)	+		
Dianthin D	cyclo-(Gly-Ser-Leu-Pro-Pro-Ile-Phe)	+		
Dianthin E	cyclo-(Gly-Pro-Ile-Ser-Phe-Val)	+	Proliferation stimulant	
Dianthin F	cyclo-(Gly-Pro-Phe-Val-Phe)	+		
Dianthin G	cyclo-(Gly-Pro-Leu-Thr-Leu-Phe)		Proliferation stimulant	
Dianthin H	cyclo-(Gly-Pro-Val-Thr-Ile-Phe)	+	Proliferation stimulant	
Dianthin I	cyclo-(Gly-Phe-Pro-Ser-Phe)			
Longicalycinin A	cyclo-(Gly-Phe-Tyr-Pro-Phe)	+		anthelmintic

mitochondrial intrinsic pathway (77). Also, there are several reports considering the anticancer activities of dianthin cyclopeptides originally isolated from *Dianthus superbis*. In one study, the biological activities of the synthesized dianthin A, previously isolated from the whole plant of *Dianthus superbis*, are reported (71). Dianthin A shows a noticeable cytotoxic activity against two cancer cell lines, DLA and EAC cells (cytotoxic concentration inhibitory of 50% growth as CTC_{50} , 15.1 and 18.6 μM , respectively) (Chart 7). 5-Fluorouracil (5-FU), as a standard drug, shows CTC_{50} , 37.36 and 90.55 μM against the two cell lines, respectively (71). In another study, MTT as a cytotoxicity assay was used to examine the anticancer activity of all the compounds isolated from the methanol extract of *Dianthus superbis* (59). By employing different cancerous cell lines, Hep G2, Hep 3B, A-549, MCF-7, and MDA-MB-231, it was shown that, among dianthins C–F, only cyclopeptide E was effective against HepG2 with IC_{50} , 2.37 $\mu\text{g}/\text{mL}$ (Chart 8). Doxorubicin was chosen as the control drug in this experiment (IC_{50} , 0.19 $\mu\text{g}/\text{mL}$) (59). Interestingly, by the MTT assay, it was shown that dianthins G, H, and E increased cell division (proliferation) of rat osteoblast cells, MC3T3-E1 *in vitro* (66). The highest cell stimulation activity for all three compounds was achieved at 1×10^{-5} mM. It was, therefore, suggested that these

cyclic peptides may be potential candidates for osteoporosis therapy. In one study, by isolating different compounds from *Dianthus superbis* var. *longicalycinus*, only longicalycinin A, as a cyclopeptide, showed cell toxicity against HepG2 with IC_{50} value 13.52 $\mu\text{g}/\text{mL}$ by MTT assay (Chart 8) although several cell lines were employed, including human hepatocellular carcinoma Hep G2, Hep 3B, human breast carcinoma MCF-7, MDA-MB-231, and human lung carcinoma A-549 (70). The cytotoxic activity of longicalycinin A was also examined against DLA (NCRC 101) and EAC (NCRC 69) cell lines. 5-FU was used as the reference drug. Cytotoxic concentration of longicalycinin A for 50% growth inhibition (CTC_{50}), determined by a graphical extrapolation method, was calculated as 2.62 and 6.37 μM for DLA and EAC cell lines, respectively (Chart 7) (72). The standard drug reported was also 5-FU with the previous CTC_{50} reports (71). In a recent publication, longicalycinin A and its several analogues were synthesized, and their cytotoxic activities were examined against HepG2 and HT-29 using different experiments, including MTT, flow cytometry analysis, and Lysosomal membrane integrity assays. The results show that the two cyclopeptide analogues of longicalycinin A, cyclo-(Thr-Val-Pro-Phe-Ala), and cyclo-(Phe-Ser-Pro-Phe-Ala) were effective cytotoxic agents that were even

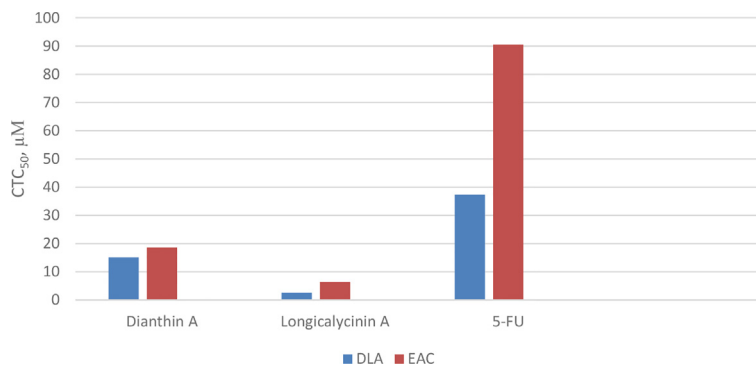


CHART 7 | Cytotoxicity of longicalycinin A, compared with dianthin A and 5-Fluorouracil (5-FU) as standard drug on cancer cells, Dalton's lymphoma ascites (DLA) and Ehrlich's ascites carcinoma (EAC).

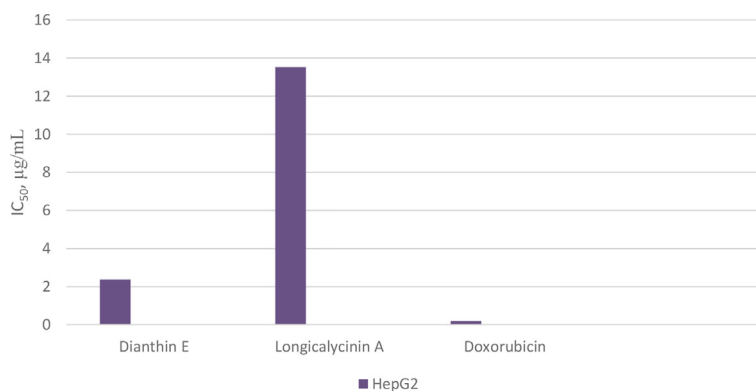


CHART 8 | Cytotoxicity of longicalycinin A on cancer cells, HepG2, compared with dianthin E and doxorubicin (as standard drug).

better than longicalycinin A (74). Cytotoxic activity of linear and cyclic heptapeptide analogues of longicalycinin A containing two cysteine residues were also examined on the two cell lines HepG2 and HT-29, using MTT assay and flow cytometry analysis. Skin fibroblast cells were included in the experiment to evaluate if any toxicity of these peptides occurs on normal cells. As a cytotoxic reference, 5-FU was chosen (75). The result of the MTT assay show that the cyclic heptapeptide analogue was toxic against the cancer cell lines more than the linear heptapeptide congener. In addition, flow cytometry analysis demonstrates that apoptosis of the cancer cells can occur by the cyclic heptapeptide in higher percentages than by the linear heptapeptide analogue. In fact, the linear peptide showed no harmful effect on cancer cells as well as on skin fibroblast cells, whereas the cyclic heptapeptide could impose an apoptotic event (about 90%) on all the cancerous and fibroblast cells (75). As a conclusion from this experiment, further

and better designed heptapeptide analogues of longicalycinin A containing a disulfide bond are needed to differentiate toxicity between cancer cells and normal cells. In the later study, various fractions of methanol extract of *Dianthus superbis*, i.e., ethyl acetate, butanol, and distilled water fractions as well as their bioactive compound content were evaluated *in vitro* from the points of antioxidant, anti-influenza, and cell toxicity activities (78). A cytotoxic activity assay against four cell lines, Hela (ovarian cancer cell), SKOV (ovarian cancer cell), Caski (cervical cancer cell), and NCL-H1299 (human lung cancer cell) showed that the ethyl acetate fraction was the most potent part of the methanol extract (with IC_{50} s 9.5, 9.6, 13.8, and 69.9 $\mu\text{g}/\text{mL}$ against the four cell lines, respectively). Because SKOV cells, as the most resistant ovarian cells, do not respond to the usual anticancer drugs such as Adriamycin and cis-platin, these results could be interesting. The authors show that the cyclic peptide content of the ethyl acetate

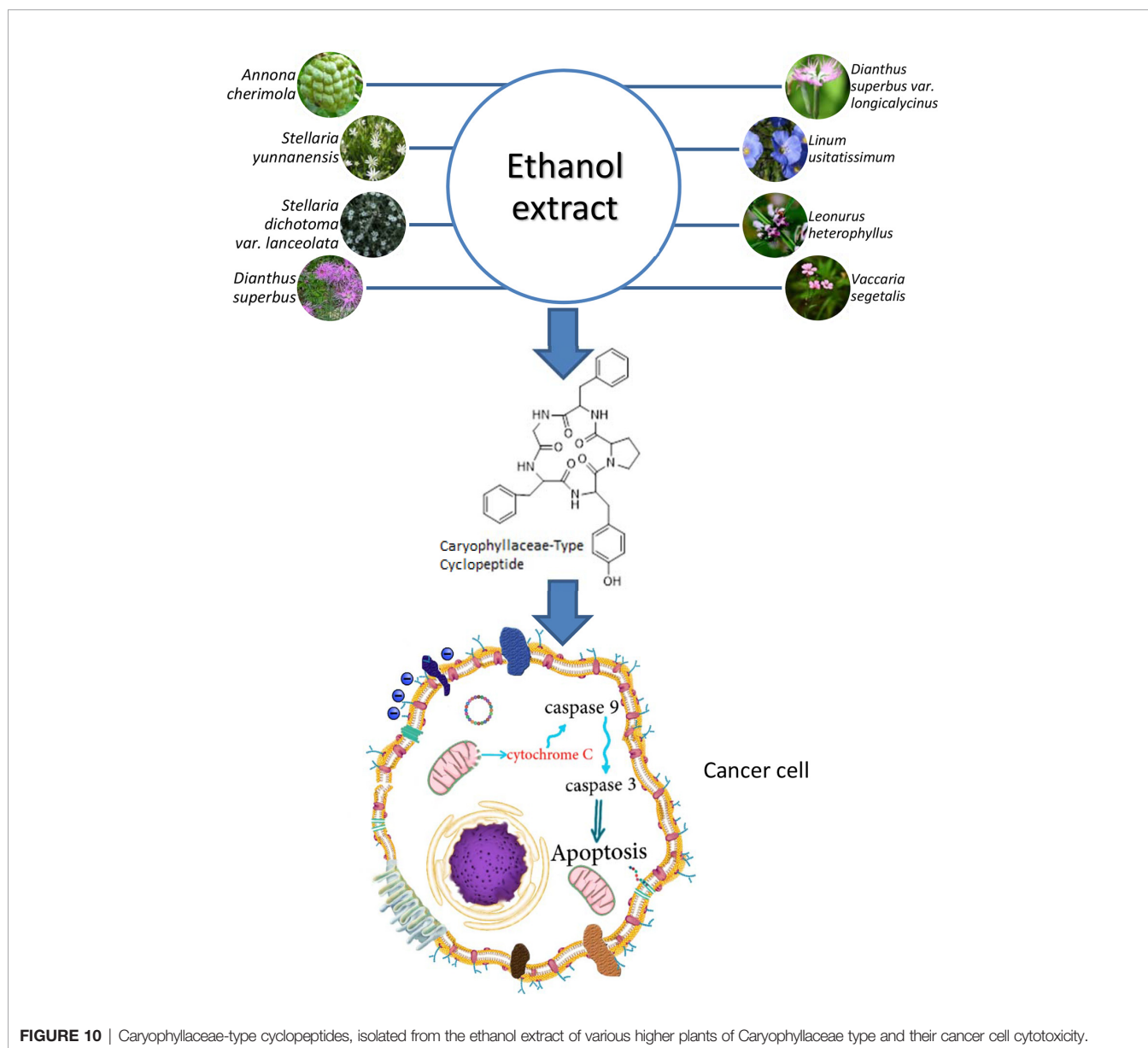


FIGURE 10 | Caryophyllaceae-type cyclopeptides, isolated from the ethanol extract of various higher plants of Caryophyllaceae type and their cancer cell cytotoxicity.

extract was more than that of the other extracts. The butanol extract is shown to be of secondary importance with fewer phenolic compounds and, thus, with less cyclic peptide content. Moreover, dianthines C, D, H, and F, identified in the extracts by LC-MS/MS and measured by the correlation study, are shown to have cytotoxicity effects in the range of 75.7% to 99.7% (78).

Other Biological Activities of Dianthins

Various species of *Dianthus* have been used in China, Korea, Iran, and Mongolia (78) for medicinal purposes other than carcinoma (65, 79). In one report, *Dianthus superbus* is shown to enhance cognition and improve memory in memory impaired mice under scopolamine induction. Thus, it is suggested that the plant could be useful in preventing Alzheimer disease (80).

Dianthus superbus has been also considered as a source of antioxidants for scavenging reactive oxygen radical species (ROS) (76, 81). That is because it contains phenolic compounds with high reducing power. These phenolic compounds mainly correlate with cyclic peptides' content of the plant. In fact, antimicrobial and cytotoxic activities of *Dianthus superbus* may be somehow in parallel with the kinds of dianthin cyclopeptides present in the plant (76, 78, 81). On the other hand, antiviral activity of *Dianthus superbus* has been also reported against influenza viruses, but this activity corresponded to the presence of flavonol glycosides detected in the butanol fraction of the methanolic extract of the plant (78).

There are reports concerning the utilization of dianthins as antiparasitic agents (71, 72). Dianthin A is shown to have a strong antifungal activity against *Candida albicans* (MIC, 6 µg/mL) compared with griseofulvin. This cyclopeptide also demonstrated a moderate anthelmintic activity on earthworms

in 2 mg/mL concentration, using mebendazole/piperazine citrate as the standard drugs (71). A good anthelmintic activity of longicalycinin A was also reported in the literature (72). In addition, longicalycinin A showed moderate activity against dermatophytes (72).

CONCLUDING REMARKS

Caryophyllaceae-type cyclopeptides, as natural peptides isolated from the ethanol extract of various higher plants of Caryophyllaceae type (Figure 10), have shown anticancer activity against several cancerous cell lines. The common feature in these peptides, apart from the cyclic structure, is the hydrophobic characteristic of their whole molecules due to the high amount of nonpolar amino acid residues present in their structures (≈80%). As can be roughly calculated from Table 8, proline, phenylalanine, and glycine, in order, make up the higher percentage of residue content in the cyclopeptide scaffolds compared with other residues. Polar amino acids make less contribution (around 20%) in the cyclic structures of peptides. Therefore, from the point of structure–activity relationship (SAR) studies, it may be estimated that these naturally occurring cyclopeptides insert their toxicity on cancer cells by a hydrophobic/hydrophilic characteristic balanced equal to a 4/1 ratio. This estimate is in accordance with a study that reports higher hydrophobic peptides infuse better into the cancer cells through the nonpolar part of the cell membrane, which results in cell disruption and necrosis (82, 83). Moreover, the presence of proline as well as glycine in the peptides is important for interaction with the cancer cell membrane (84). Phenylalanine residue can also

TABLE 8 | Caryophyllaceae-type cyclopeptides as cytotoxic agents, comparing the properties of amino acid (AA) content in their sequences. Each (+) stands for one AA. AAs with colored names indicate their importance in cytotoxic activity of the cyclopeptides.

Peptide name	Sequence	AA, acidic	AA, basic	AA, polar	AA, nonpolar
Segetalin E	Cyclo(-Gly-Tyr-Val-Pro-Leu-Trp-Pro-)			++	+++++
Yunnanin A	Cyclo(-Gly-Tyr-Gly-Gly-Pro-Phe-Pro)			++++	+++
Yunnanin B	Cyclo(-Gly-Ser-δ-HO Ile-Phe-Phe-Ala)			+++	+++
Yunnanin C	Cyclo(-Gly-Ile-Gly-Phe-Tyr-Ser-Pro)			++++	+++
Yunnanin D	Cyclo(-Gly-Ile-Ser-Phe-Arg-Phe-Pro)		+	++	++++
Dichotomin A	Cyclo(-Gly-Thr-Phe-Leu-Tyr-Val)			+++	+++
Dichotomin B	Cyclo(-Gly-Thr-Phe-Leu-Tyr-Thr)			++++	++
Dichotomin C	Cyclo(-Gly-Thr-Phe-Leu-Tyr-Ala)			+++	+++
Dichotomin E	Cyclo(-Gly-Tyr-Ala-Phe-Ala)			++	+++
Dichotomin H	Cyclo(Ala-Pro-Thr-Phe-Tyr-Pro-Leu-Ile)			++	+++++
Dichotomin I	Cyclo(-Val-Pro-Thr-Phe-Tyr-Pro-Leu-Ile)			++	+++++
Cycloleonoripeptide B	Cyclo(-Gly-Pro-Pro-Pro-Tyr-Pro-Pro-Met(O)-Ile)			+++	+++++
Cycloleonoripeptide C	Cyclo(-Gly-Pro-Pro-Pro-Tyr-Pro-Pro-Met(O)-Ile)			+++	+++++
Cherimolacyclopeptide A	Cyclo(-Pro-Gln-Thr-Gly-Met-Leu-Pro-Ile)			+++	+++++
Cherimolacyclopeptide B	Cyclo(-Pro-Gln-Thr-Gly-OMt-Leu-Pro-Ile)			++++	++++
Dianthin A	cyclo(-Ala-Tyr-Asn-Phe-Gly-Leu)			++	++++
Dianthin C	cyclo(-Gly-Pro-Phe-Tyr-Val-Ile)			++	++++
Dianthin D	cyclo(-Gly-Ser-Leu-Pro-Pro-Ile-Phe)			++	+++++
Dianthin E	cyclo(-Gly-Pro-Ile-Ser-Phe-Val)			++	++++
Dianthin F	cyclo(-Gly-Pro-Phe-Val-Phe)			+	++++
Dianthin H	cyclo(-Gly-Pro-Val-Thr-Ile-Phe)			++	++++
Longicalycinin A	cyclo(-Gly-Phe-Tyr-Pro-Phe)			++	+++
Cyclolinopeptide A	Cyclo(-Pro-Pro-Phe-Phe-Leu-Ile-Ile-Leu-Val)				+++++
Cyclolinopeptide B	Cyclo(-Pro-Pro-Phe-Phe-Val-Ile-Met-Leu-Ile)				+++++
Cyclolinopeptide E	Cyclo(-Pro-Leu-Phe-Ile-OMet-Leu-Val-Phe)			+	+++++

increase the affinity of the peptides for interaction with the membrane of cancer cells (85). On the other hand, tyrosine residue as a polar amino acid may raise the toxicity of the peptides toward cancer cells (83, 86). In addition, the cyclic form of the peptides with fixed conformational structure and less occupying space can cause peptides to face less of a physical barrier to enter the cells (87). However, modification of these cyclic peptides by chemical means, either in a hydrophobic direction (e.g., acylation) or in a hydrophilic way (e.g., phosphorylation to impose negative charge or replacing/adding lysine or arginine within the cyclic peptide structure to add positive charge), is needed (88). By such favorable modification, these cyclic peptides can meet most all the requirements of SAR data needed to make them good candidates for cancer treatment in the clinic. On the other hand, conjugation of these peptides through tyrosine residue with an anticancer drug may even increase their physicochemical properties. These peptides considered cell-penetrating/targeting peptides can improve specificity and reduce side effects of the present anticancer drugs.

Because medicinal plants containing cyclopeptides, including caryophyllaceae-type cyclopeptides, have been used traditionally for a long time, it is inferred that these cyclopeptides should not be toxic to healthy cells/tissues of human body, so this is another

reason for considering these cyclopeptides as safer compounds for cancer therapy compared with the conventional chemotherapy agents. However, modified caryophyllaceae-type cyclopeptides, like any other newly introduced agent as drugs, must pass all the requirements necessary to ensure that these cyclopeptides are safe as well as biologically active enough to add to the treatment schedules of cancer therapy.

AUTHOR CONTRIBUTIONS

A part of this manuscript concerning Longicalycinin A synthesis and its analogues was experimentally involved by MG, AB, and BM. All authors contributed to the article and approved the submitted version.

ACKNOWLEDGMENTS

Hereby, the contribution of Alireza Houshdar Tehrani (Medical School, Shahid Beheshti University of Medical Sciences, Tehran, Iran) for designing and preparing **Figure 2** is appreciated.

REFERENCES

- Shoombuatong W, Schaduagrang N, Nantasenam C. Unraveling the bioactivity of anticancer peptides as deduced from machine learning. *EXCLI J* (2018) 17:734–52. doi: 10.17179/excli2018-1447
- Gopinadh G. Cancer characteristics and its causes. *Res Rev J Med Health Sci* (2015) 4:1.
- <https://www.who.int/news-room/fact-sheets/detail/cancer>.
- Cancer Tomorrow - IARC. 150 Cours Albert Thomas, 69372 Lyon CEDEX 08, France.
- Wang L, Dong C, Li X, Han W, Su X. Anticancer potential of bioactive peptides from animal sources (Review). *Oncol Rep* (2017) 38:637–51. doi: 10.3892/or.2017.5778
- Sachdeva S. Peptides as 'Drugs': The Journey so Far. *Int J Pept Res Ther* (2017) 23:49–60. doi: 10.1007/s10989-016-9534-8
- Lau JL, Dunn MK. Therapeutic peptides: Historical perspectives, current development trends, and future directions. *Bioorg Med Chem* (2018) 26:2700–07. doi: 10.1016/j.bmc.2017.06.052
- Marqus S, Pirogova E, Piva TJ. Evaluation of the use of therapeutic peptides for cancer treatment. *J BioMed Sci* (2017) 24:21. doi: 10.1186/s12929-017-0328-x
- Bhunia SK, Maiti TK. Targeting tumors with peptides from natural sources. *Trends Biotechnol* (2008) 26:210–17. doi: 10.1016/j.tibtech.2008.01.002
- Schweizer F. Cationic amphiphilic peptides with cancer-selective toxicity. *Eur J Pharmacol* (2009) 625:190–94. doi: 10.1016/j.ejphar.2009.08.043
- Hu C, Chen X, Zhao W, Chen Y, Huang Y. Design and Modification of Anticancer Peptides. *Drug Des* (2016) 5:3. doi: 10.4172/2169-0138.1000138
- Yang QZ. Design of potent, non-toxic anticancer peptides based on the structure of the antimicrobial peptide, temporin-1Cea. *Arch Pharm Res (Seoul)* (2013) 36:1302–10. doi: 10.1007/s12272-013-0112-8
- Hilchie AL, Conrad DM, Coombs MRP, Zemlak T, Doucette CD, Liwski RS, et al. Pleurocidin-family cationic antimicrobial peptides mediate lysis of multiple myeloma cells and impair the growth of multiple myeloma xenografts. *Leuk Lymphoma* (2013) 54:2255–62. doi: 10.3109/10428194.2013.770847
- Hilchie AL, Conrad DM, Coombs MRP, Zemlak T, Doucette CD, Liwski RS, et al. Enhanced killing of breast cancer cells by a D-amino acid analog of the winter flounder-derived pleurocidin NRC-03. *Exp. Mol Pathol* (2015) 99:426–34. doi: 10.1016/j.yexmp.2015.08.021
- Tørfoss V, Isaksson J, Ausbacher D, Brandsdal BO, Flaten GE, Anderssen TE, et al. Improved anticancer potency by head-to-tail cyclization of short cationic anticancer peptides containing a lipophilic β ,2-amino acid. *J Pept Sci* (2012) 18:609–19. doi: 10.1002/psc.2441
- Roxin Á, Zheng G. Flexible or fixed: A comparative review of linear and cyclic cancer-targeting peptides. *Future Med Chem* (2012) 4:1601–18. doi: 10.4155/fmc.12.75
- Christopher JW, Andrei KY. Contemporary strategies for peptide Macrocyclization. *Nat Chem* (2011) 3:509–24. doi: 10.1038/nchem.1062
- Di L. Strategic Approaches to Optimizing Peptide ADME Properties. *AAPS* (2015) 17(1):134–43. doi: 10.1208/s12248-014-9687-3
- Tan NH, Zhou J. Plant cyclopeptides. *Chem Rev* (2006) 106:840–95. doi: 10.1021/cr040699h
- Zhao S, Kuang B, Peng W, He W, Xu H, Ji C, et al. Chemical Progress in Cyclopeptide-containing Traditional Medicines Cited in Chinese Pharmacopoeia. *Chin J Chem* (2012) 30:1213–25. doi: 10.1002/cjoc.201200508
- Christenhusz MJM, Byng JW. The number of known plants species in the world and its annual increase. *Phytotaxa* (2016) 261(3):201–17. doi: 10.11646/phytotaxa.261.3.1
- Kaufmann HP, Tobschirbel. An oligopeptide from linseed. *Chem Ber* (1959) 92:2805–09. doi: 10.1002/cber.19590921122
- Wieczorek Z, Bengtsson B, Trojnar J, Siemion IZ. Immunosuppressive activity of cyclinopeptide A. *Peptide Res* (1991) 4:275–83.
- Jia A-Q, Tan N-H, Zhou J. Cyclopeptides from *Sagina japonica* (Caryophyllaceae). *Chem Biodivers* (2007) 4:241–47. doi: 10.1002/cbdv.200790029
- Morita H, Yun YS, Takeya K, Itokawa H, Segetalin A. A new cyclic hexapeptide from *Vaccaria segetalis*. *Tetrahedron Lett* (1994) 35(51):9593–96. doi: 10.1016/0040-4039(94)88519-2
- Morita H, Yun YS, Takeya K, Itokawa H, Segetalins B. C and D, Three New Cyclic Peptides from *Vaccaria segetalis*. *Tetrahedron* (1995) 51(21):6003–14. doi: 10.1016/0040-4020(95)00278-G
- Yun YS, Morita H, Takeya K, Itokawa H. Cyclic Peptides from Higher Plants. 34.1 Segetalins G and H, Structures and Estrogen-like Activity of Cyclic Pentapeptides from *Vaccaria segetalis*. *J Nat Prod* (1997) 60(3):216–18. doi: 10.1021/np960617n
- Morita H, Yun YS, Takeya K, Itokawa H. Conformation of cyclic heptapeptides: conformational analysis of segetalins D and E by distance

- geometry calculations. *Chem Pharm Bull* (1997) 45(5):883–87. doi: 10.1248/cpb.45.883
29. Dahiya R, Kaur K. Synthetic and Biological Studies on Natural Cyclic Heptapeptide: Segetalin E. *Arch Pharm Res* (2007) 30(1):1380–86. doi: 10.1007/BF02977360
 30. Morita H, Eda M, Iizuka T, Hirasawa Y, Sekiguchi M, Yun YS, et al. Structure of a new cyclic nonapeptide, segetalin F, and vasorelaxant activity of segetalins from *Vaccaria segetalis*. *Bioorg Med Chem Lett* (2006) 16:4458–61. doi: 10.1016/j.bmcl.2006.06.083
 31. Sonnet P, Nascimento SD, Marty D, Franceschini N, Guillon J, Brion JD, et al. First synthesis of segetalins B and G: two cyclopentapeptides with estrogen-like activity. *Tetrahedron Lett* (2003) 44:3293–96. doi: 10.1016/S0040-4039(03)00583-5
 32. Morita H, Yun YS, Takeya K, Itokawa H, Shirota O. A cyclic heptapeptide from *Vaccaria segetalis*. *Phytochemistry* (1996) 42(2):439–41. doi: 10.1016/0031-9422(95)00911-6
 33. Condie JA, Nowak G, Reed DW, Balsevich JJ, Reaney MJT, Arnison PG, et al. The biosynthesis of Caryophyllaceae-like cyclic peptides in *Saponaria vaccaria* L. from DNA-encoded precursors. *Plant J* (2011) 67:682–90. doi: 10.1111/j.1365-3113X.2011.04626.x
 34. Morita H, Shishido A, Kayashita T, Shimomura M, Takeya K, Itokawa H. Two novel cyclic peptides, Yunnanin A and B from *Stellaria yunnanensis*. *Chem Lett* (1994) 23(12):2415–18. doi: 10.1246/cl.1994.2415
 35. Morita H, Kayashita T, Takeya K, Itokawa H, Shiro M. Conformation of Cyclic Heptapeptides: Solid and Solution State Conformation of Yunnanin A. *Tetrahedron* (1997) 53(5):1607–16. doi: 10.1016/S0040-4020(96)01098-8
 36. Morita H, Kayashita T, Shimomura M, Takeya K, Itokawa H. Cyclic Peptides from Higher Plants. 24.1 Yunnanin C, a Novel Cyclic Heptapeptide from *Stellaria yunnanensis*. *J Nat Prod* (1996) 59(3):280–82. doi: 10.1021/np960123q
 37. Napolitano A, Rodriguez M, Bruno I, Marzocco S, Autore G, Riccio R, et al. Synthesis, structural aspects and cytotoxicity of the natural cyclopeptides yunnanin A, C and phakellistatins 1, 10. *Tetrahedron* (2003) 59:10203–11. doi: 10.1016/j.tet.2003.11.073
 38. Poojary B, Belagali SL. Synthesis, Characterization and Biological Evaluation of Cyclic Peptides: Viscumamide, Yunnanin A and Evolidine. *Z. Naturforsch* (2005) 60b:1313–20. doi: 10.1515/znb-2005-1217
 39. Jiang S, Zhao L, Wu J, Bao Y, Wang Z, Jin Y. Photo-induced synthesis, structure and in vitro bioactivity of a natural cyclic peptide Yunnanin A analog. *RSC Adv* (2020) 10:210–14. doi: 10.1039/C9RA09163G
 40. Wong CTT, Lam HY, Li X. Effective synthesis of cyclic peptide yunnanin C and analogues via Ser/Thr ligation (STL)-mediated peptide cyclization. *Tetrahedron* (2014) 70:7770–73. doi: 10.1016/j.tet.2014.05.080
 41. Morita H, Kayashita T, Shimomura M, Takeya K, Itokawa H. Cyclic peptides from higher plants. Part 30. Three novel cyclic peptides, Yunnanin D, E and F from *Stellaria yunnanensis*. *Heterocycles* (1996) 43(6):1279–86. doi: 10.3987/COM-96-7459
 42. Poojary B, Belagali SL. Synthetic studies on cyclic octapeptides: Yunnanin F and Hymenistatin. *Eur J Med Chem* (2005) 40:407–12. doi: 10.1016/j.ejmech.2004.11.013
 43. Morita H, Kayashita T, Shishido A. Dichotomin A, A New Cyclic Hexapeptide from *Stellaria dichotoma* L. var. *lanceolata* Bge. *Bioorg Med Chem Lett* (1995) 57:2353–56. doi: 10.1016/0960-894X(95)00406-J
 44. Morita H, Kayashita T, Shishido A, Takeya K, Itokawa H, Shiro M. Dichotomins A - E, New Cyclic Peptides from *Stellaria dichotoma* L. var. *lanceolata* Bge. *Tetrahedron* (1996) 52(4):1165–76. doi: 10.1016/0040-4020(95)00974-4
 45. Morita H, Shishido A, Kayashita T, Takeya K, Itokawa H. Cyclic Peptides from Higher Plants. 39. Dichotomins F and G, Cyclic Peptides from *Stellaria dichotoma* var. *lanceolata*. *J Nat Prod* (1997) 60(4):404–07. doi: 10.1021/np9606714
 46. Morita H, Takeya K, Itokawa H. Cyclic octapeptides from *Stellaria dichotoma* var. *lanceolata*. *Phytochemistry* (1997) 45(4):841–45. doi: 10.1016/S0031-9422(97)00056-3
 47. Sharma M, Singhvi I, Ali ZM, Kumar M, Dev SK. Synthesis and biological evaluation of natural cyclic peptide. *Future J Pharm Sci* (2018) 4:220–28. doi: 10.1016/j.fjps.2018.07.001
 48. Morita H, Gonda A, Takeya K, Itokawa H. Cycloleonoripeptides A, B and C, Three New Proline-Rich Cyclic Nonapeptides from *Leonurus heterophyllus*. *Bioorg Med Chem Lett* (1996) 6(7):767–70. doi: 10.1016/0960-894X(96)00105-9
 49. Morita H, Gonda A, Takeya K, Itokawa H, Shirota O. Conformational preference of cycloleonoripeptides A, B, and C, three proline-rich cyclic nonapeptides from *Leonurus heterophyllus*. *Chem Pharm Bull* (1997) 45(1):161–64. doi: 10.1248/cpb.45.161
 50. Morita H, Gonda A, Takeya K, Itokawa H, Iitaka Y. Cycloleonoripeptide D, A New Proline-Rich Cyclic Decapeptide from *Leonurus heterophyllus*. *Tetrahedron* (1997) 53(5):1617–26. doi: 10.1016/S0040-4020(96)01099-X
 51. Morita H, Iizuka T, Gonda A, Itokawa H, Takeya K. Cycloleonoripeptides E and F, cyclic nonapeptides from *Leonurus heterophyllus*. *J Nat Prod* (2006) 69(5):839–41. doi: 10.1021/np050544k
 52. Kaufmann HP, Tobschirbel A. An oligopeptide from linseed. *Chem Ber* (1959) 92:2805–09. doi: 10.1002/cber.19590921122
 53. Tonelli AE. Approximate Treatment of the Conformational Characteristics of a Cyclic Nonapeptide, Cyclolinopeptide A. *Proc Nat Acad Sci U S A* (1971) 68(6):1203–07. doi: 10.1073/pnas.68.6.1203
 54. Morita H, Shishido A, Matsumoto T, Itokawa H, Takeya K. Cyclolinopeptides B - E. New Cyclic Peptides from *Linum usitatissimum*. *Tetrahedron* (1999) 55:967–76. doi: 10.1016/S0040-4020(98)01086-2
 55. Morita H, Shishido A, Matsumoto T, Takeya K, Itokawa H. A new immunosuppressive cyclic nonapeptide, cyclolinopeptide B from *Lium usitatissimum*. *Bioorg Med Chem Lett* (1997) 7(10):1269–72. doi: 10.1016/S0960-894X(97)00206-0
 56. Matsumoto T, Shishido A, Morita H, Itokawa H, Takeya K. Cyclolinopeptides F-I. cyclic peptides from linseed. *Phytochemistry* (2001) 57:251–60. doi: 10.1016/S0031-9422(00)00442-8
 57. Matsumoto T, Shishido A, Morita H, Itokawa H, Takeya K. Conformational analysis of cyclolinopeptides A and B. *Tetrahedron* (2002) 58:5135–40. doi: 10.1016/S0040-4020(02)00476-3
 58. Wele A, Landon C, Labbe H, Vovelle F, Zhang Y, Bodo B. Sequence and solution structure of cherimolacyclopeptides A and B, novel cyclooctapeptides from the seeds of *Annona cherimola*. *Tetrahedron* (2004) 60:405–14. doi: 10.1016/j.tet.2003.11.026
 59. Hsieh P-W, Chang F-R, Wu C-C, Wu KY, Li CM, Chen SL, et al. New Cytotoxic Cyclic Peptides and Dianthramide from *Dianthus superbus*. *J Nat Prod* (2004) 67:1522–27. doi: 10.1021/np040036v
 60. Oshima Y, Ohsawa T, Oikawa K, Konno C, Hikino H. Structures of Dianosides A and B, Analgesic Principles of *Dianthus superbus* var. *longicalycinus* Herbs. (part 46 in the series on the validity of Oriental medicines). *Planta Med* (1984) 40–3. doi: 10.1055/s-2007-969617
 61. Oshima Y, Ohsawa T, Hikino H. Structure of Dianosides C, D, E and F, Triterpenoid Saponins of *Dianthus superbus* var. *longicalycinus* Herb. (Part 55 in the series on the validity of the Oriental medicines). *Planta Med* (1984), 43–7. doi: 10.1055/s-2007-969618
 62. Oshima Y, Ohsawa T, Hikino H. Structures of Dianosides G, H and I, Triterpenoid Saponins of *Dianthus superbus* var. *longicalycinus* Herbs. (Part 66 in the series on the validity of the Oriental medicines). *Planta Med* (1984), 254–58. doi: 10.1055/s-2007-969692
 63. Stirpe F, Williams DG, Onyon LJ, Legg RF, Stevens WA. Dianthins, ribosome-damaging proteins with anti-viral properties from *Dianthus caryophyllus* L. (carnation). *Biochem J* (1981) 195:399–405. doi: 10.1042/bj1950399
 64. Prestle J, Hornung E, Schönfelder M, Mundry K-W. Mechanism and site of action of a ribosome-inactivating protein type 1 from *Dianthus barbatus* which inactivates *Escherichia coli* ribosomes. *FEBS Lett* (1992) 297:250–52. doi: 10.1016/0014-5793(92)80549-V
 65. Wang Y-C, Tan N-H, Zhou J, Wu H-M. Cyclopeptides from *dianthus superbus*. *Phytochemistry* (1998) 49:1453–56. doi: 10.1016/S0031-9422(97)00857-1
 66. Tong Y, Luo J-G, Wang R, Wang X-B, Kong L-Y. New cyclic peptides with osteoblastic proliferative activity from *Dianthus superbus*. *Bioorg Med Chem Lett* (2012) 22:1908–11. doi: 10.1016/j.bmcl.2012.01.058
 67. Han J, Huang M, Wang Z, Zheng Y, Zeng G, He W, et al. Cyclopentapeptides from *Dianthus chinensis*. *J Pept Sci* (2015) 21:550–53. doi: 10.1002/psc.2746
 68. Zhang S, Amso Z, Rodriguez LMDL, Kaur H, Brimble MA, Rodriguez LMDL. Synthesis of Natural Cyclopentapeptides Isolated from *Dianthus chinensis*. *J Nat Prod* (2016) 79:1769–74. doi: 10.1021/acs.jnatprod.6b00152
 69. Pharmacopoeia commission of People's Republic of China. Beijing [Pekin]: Guangdong Science and Technology Press (1992). p. 98.

70. Hsieh P-W, Chang F-R, Wu C-C, Li CM, Wu KY, Chen SL, et al. Longicalycinin A, a New Cytotoxic Cyclic Peptide from *Dianthus superbus* var. *longicalycinus* (MAXIM.) WILL. *Chem Pharm Bull* (2005) 53(3):336–38. doi: 10.1248/cpb.53.336
71. Dahiya R. Synthesis and biological activity of a cyclic hexapeptide from *Dianthus superbus*. *Chem Pap* (2008) 62(5):527–35. doi: 10.2478/s11696-008-0052-9
72. Dahiya R. Synthetic and pharmacological studies on longicalycinin A. *Pak J Pharm Sci* (2007) 20(4):317–23.
73. Waqar Ahmad W, Shaheen F, Zhou Y, Zhang L. Solid-phase total synthesis of cyclic pentapeptide Longicalycinin A, by using 2-chlorotriyl chloride resin. *J Cancer Res Exp Oncol* (2013) 5(1):8–19. doi: 10.5897/JCREO2013.0102
74. Gholibeikian M, Bamoniri A, Houshdar Tehrani MH, Mirjalili BBF, Bijanzadeh HR. Structure-activity relationship studies of Longicalycinin A analogues, as anticancer cyclopeptides. *Chem Biol Interact* (2020) 315:108902. doi: 10.1016/j.cbi.2019.108902
75. Houshdar Tehrani MH, Bamoniri A, Mirjalili BBF, Gholibeikian M. Synthesis of linear and cyclic disulfide heptapeptides of Longicalycinin A and evaluation of toxicity on cancerous cells HepG2 and HT-29. *Iran J Pharm Res* (2018) 17(3):956–63.
76. Yu J-O, Liao Z-X, Lei J-C, Hu X-M. Antioxidant and cytotoxic activities of various fractions of ethanol extract of *Dianthus superbus*. *Food Chem* (2007) 104:1215–9. doi: 10.1016/j.foodchem.2007.01.039
77. Yu JQ, Yin Y, Lei JC, Zhang XQ, Chen W, Ding CL, et al. Activation of apoptosis by ethyl acetate fraction of ethanol extract of *Dianthus superbus* in HepG2 cell line. *Cancer Epidemiol* (2012) 36:40–5. doi: 10.1016/j.canep.2011.09.004
78. Kim DH, Park GS, Nile AS, Kwon YD, Enkhtaivan G, Nile SH. Utilization of *Dianthus superbus* L and its bioactive compounds for antioxidant, anti-influenza and toxicological effects. *Food Chem Toxicol* (2019) 125:313–21. doi: 10.1016/j.fct.2019.01.013
79. Yun BR, Yang HJ, Weon JB, Lee J, Eom MR, Ma CJ. Simultaneous determination of eight bioactive compounds in *Dianthus superbus* by high-performance liquid chromatography. *Pharmacogn Mag* (2016) 12:S264–69. doi: 10.4103/0973-1296.182159
80. Weon JB, Jung YS, Ma CJ. Cognitive-Enhancing Effect of *Dianthus superbus* var. *Longicalycinus* on Scopolamine-Induced Memory Impairment in Mice. *Biomol Ther* (2016) 24(3):298–304. doi: 10.4062/biomolther.2015.083
81. Gou J, Zou Y, Ahn J. Enhancement of Antioxidant and Antimicrobial Activities of *Dianthus superbus*, *Polygonum aviculare*, *Sophora flavescens*, and *Lygodium japonicum* by Pressure-assisted Water Extraction. *Food Sci Biotechnol* (2011) 20(1):283–87. doi: 10.1007/s10068-011-0040-7
82. Huang YB, Wang XF, Wang HY, Liu Y, Chen Y. Studies on mechanism of action of anticancer peptides by modulation of hydrophobicity within a defined structural framework. *Mol Cancer Ther* (2011) 10:416–26. doi: 10.1158/1535-7163.MCT-10-0811
83. Chiangjong W, Chutipongtanate S, Hongeng S. Anticancer peptide: Physicochemical property, functional aspect and trend in clinical application (Review). *Int J Oncol* (2020) 57:678–96. doi: 10.3892/ijo.2020.5099
84. Shamova O, Orlov D, Stegemann C, Czihal P, Hoffmann R, Brogden K, et al. ChBac3.4:A Novel proline-rich antimicrobial peptide from goat leukocytes. *Int J Pept Res Ther* (2009) 15:107–19. doi: 10.1007/s10989-009-9170-7
85. Dennison SR, Whittaker M, Harris F, Phoenix DA. Anticancer alpha-helical peptides and structure/function relationships underpinning their interactions with tumour cell membranes. *Curr Protein Pept Sci* (2006) 7:487–99. doi: 10.2174/138920306779025611
86. Ahmadiataba MA, Shahosseini S, Daraei B, Zarghi A, Houshdar Tehrani MH. Design, synthesis, and biological evaluation of new peptide analogues as selective cox-2 inhibitors. *Arch Pharm (Weinheim)* (2017) 350:e1700158. doi: 10.1002/ardp.201700158
87. Zorzi A, Deyle K, Heinis C. Cyclic peptide therapeutics: past, present and future. *Curr Opin Chem Biol* (2017) 38:24–9. doi: 10.1016/j.cbpa.2017.02.006
88. Mandal PK, Gao F, Lu Z, Ren Z, Ramesh R, Birtwistle JS, et al. Potent and selective phosphopeptide mimetic prodrugs targeted to the Src homology 2 (SH2) domain of signal transducer and activator of transcription 3. *J Med Chem* (2011) 54:3549–63. doi: 10.1021/jm2000882

Conflict of Interest: The authors declare that the research was conducted in the absence of any commercial or financial relationships that could be construed as a potential conflict of interest.

Copyright © 2021 Houshdar Tehrani, Gholibeikian, Bamoniri and Mirjalili. This is an open-access article distributed under the terms of the Creative Commons Attribution License (CC BY). The use, distribution or reproduction in other forums is permitted, provided the original author(s) and the copyright owner(s) are credited and that the original publication in this journal is cited, in accordance with accepted academic practice. No use, distribution or reproduction is permitted which does not comply with these terms.