

Supplementary Figures

Supplementary Figure 1 Venn diagrams of A) 295 C-reactive protein (CRP) independent SNPs which are also genome-wide significantly associated with any of the other examined traits (high density lipoprotein levels, HDL; low density lipoprotein levels, LDL; triglyceride levels, TG; body mass index BMI; cigarettes per day, CPD) in multi-trait MTAG and B) the same focusing on the novel CRP SNPs only

Supplementary Figure 2 Circular dendrogram presenting the novel C-reactive protein (CRP) loci Starting from the center, the layers represent the chromosome, rsID, MTAG analysis (1 = multi-trait, 2 = bivariate on CRP-lipids, 3 = bivariate on CRP-BMI), and the mapped genes, respectively. The loci from multi-trait MTAG are colored with blue and from bivariate with red

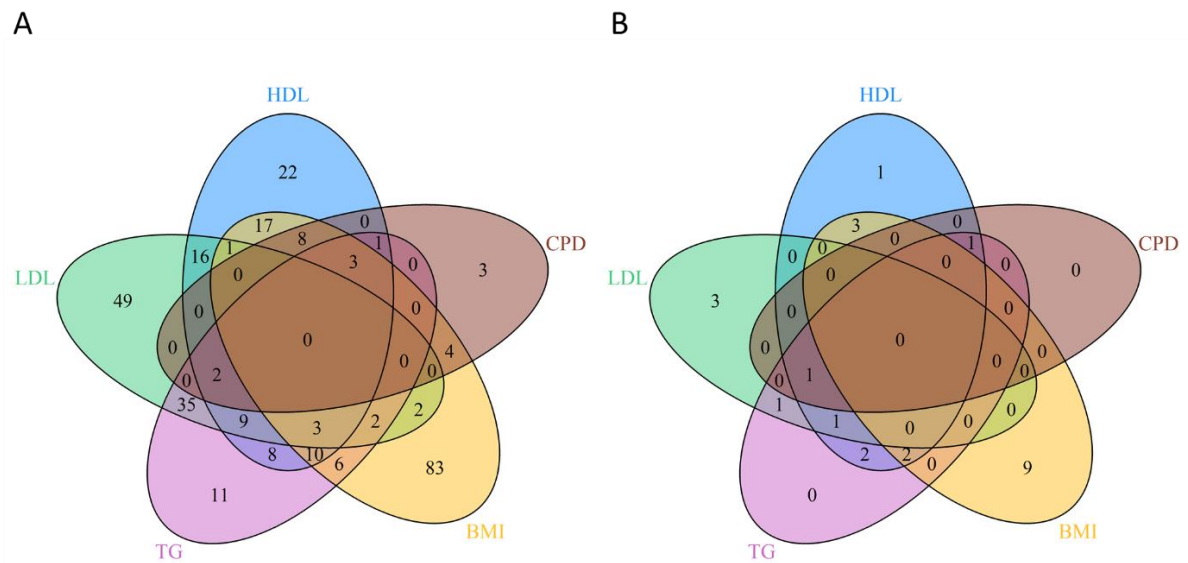
Supplementary Figure 3 Regional plots of the 41 novel C-reactive protein (CRP) loci comparing the results from the MTAG (blue) with the respective from the univariate UKB-CHARGE meta-analysis (yellow). The P-values come from two-sided statistical tests.

Supplementary Figure 4 Venn diagram of C-Reactive Protein (CRP) associated genes which are also associated with any of High-Density Lipoprotein (HDL), Low-Density Lipoprotein (LDL), Triglycerides (TG), Body Mass Index (BMI), and Cigarettes per day (CPD)

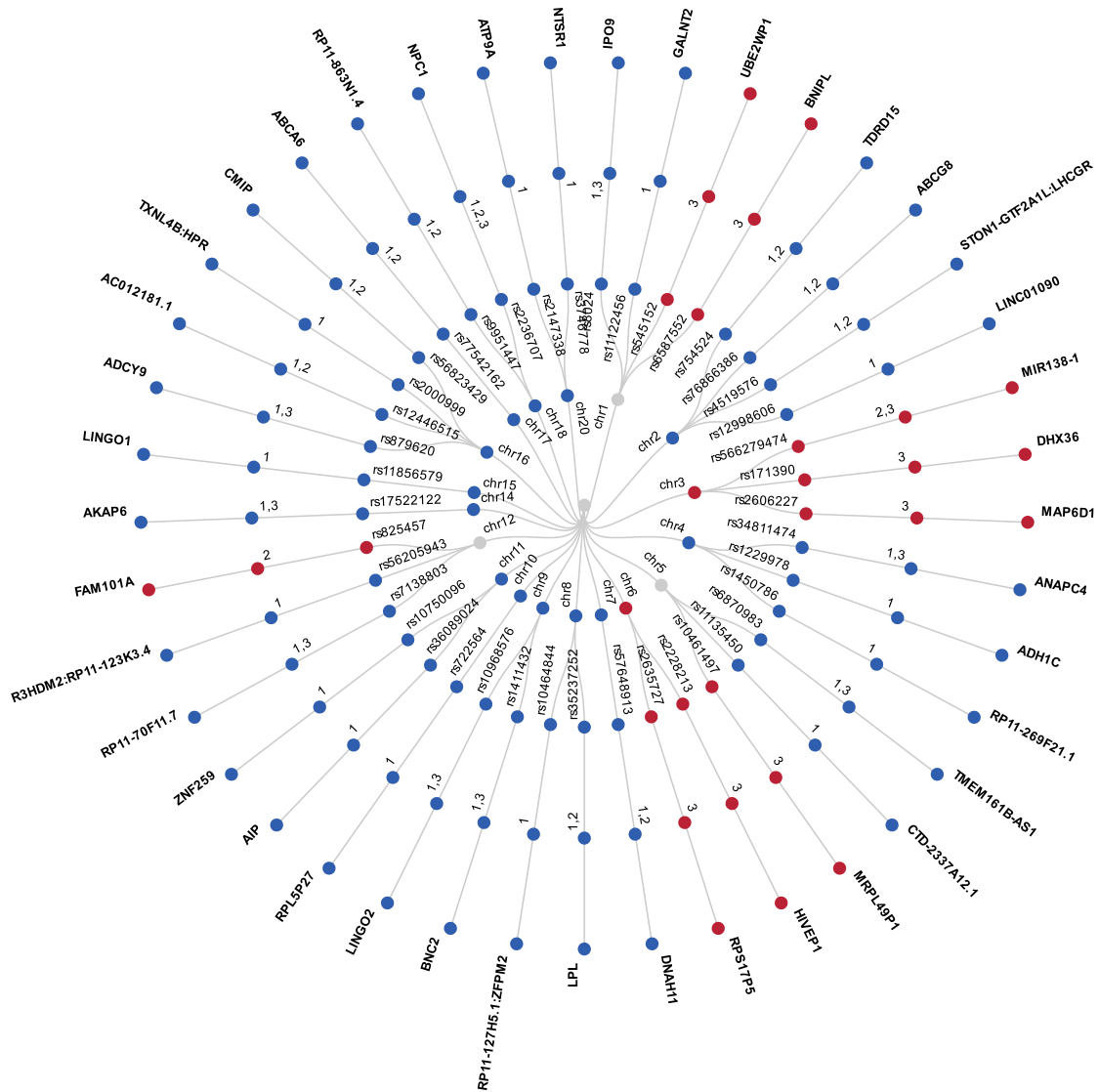
Supplementary Figure 5 Tissue expression analysis of a) 30 general and b) 54 more specific tissue types obtained from Genotype-Tissue Expression version 8 (GTEx v8) for C-Reactive Protein (CRP), Body Mass Index (BMI), High-Density Lipoprotein (HDL), Low-Density Lipoprotein (LDL), Triglycerides (TG), and Cigarettes per day (CPD) using MAGMA gene-property test. The P-values come from two-sided statistical tests. Horizontal line represents the Bonferroni threshold (a: $P=1.7 \times 10^{-3}$; b: $P=9.3 \times 10^{-4}$) and Bonferroni significant tissues are colored with red

Supplementary Figure 6 Venn diagram of the 41 candidate causal variants which colocalize between C-Reactive Protein levels (CRP) and any of the other examined traits: High-Density Lipoprotein (HDL), Low-Density Lipoprotein (LDL), Triglycerides (TG), Body Mass Index (BMI), and Cigarettes per day (CPD)

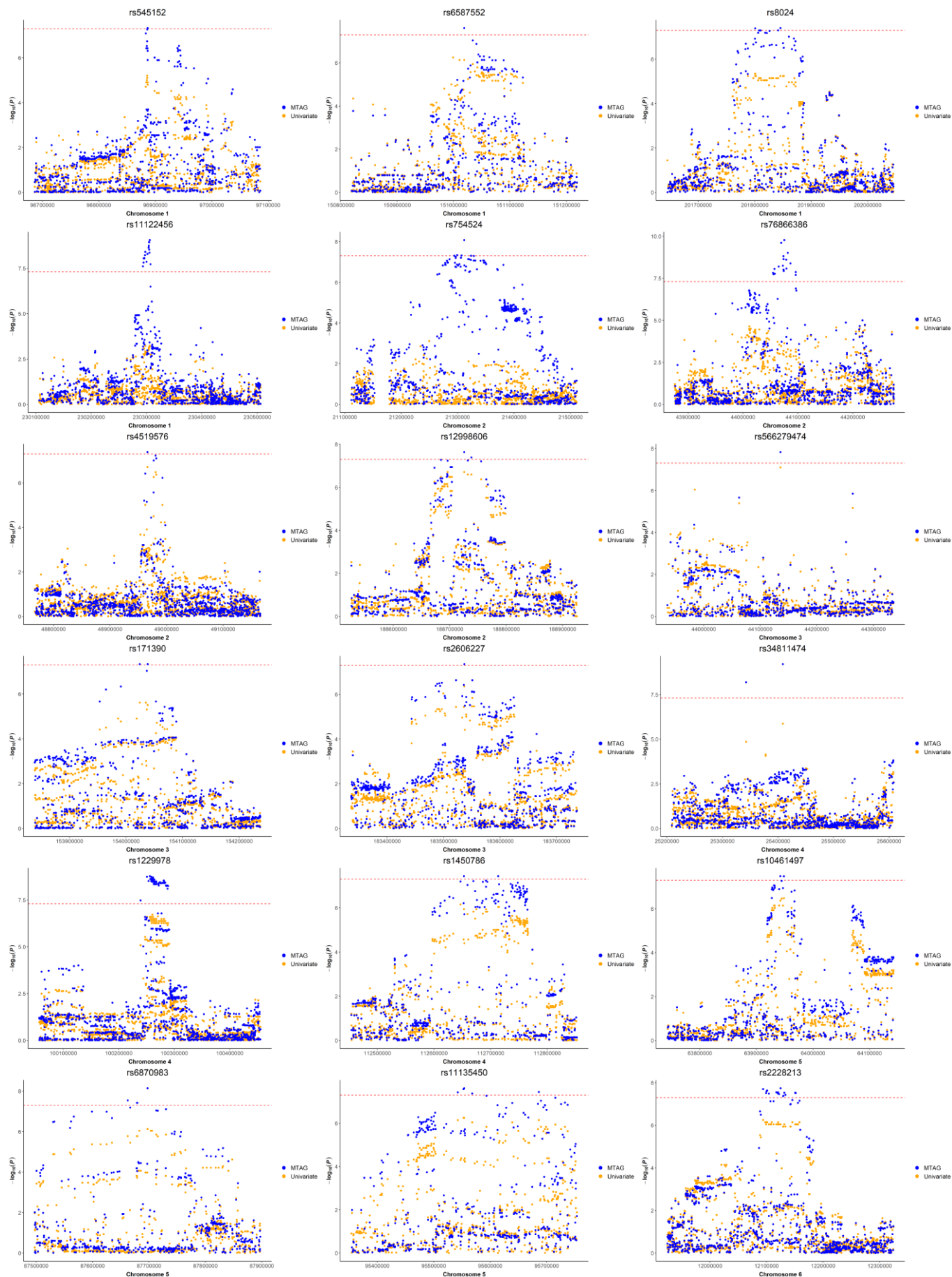
Supplementary Figure 7 Regional plots of the 41 loci found to colocalize between C-Reactive Protein levels (CRP) and any of the other examined traits: High-Density Lipoprotein (HDL), Low-Density Lipoprotein (LDL), Triglycerides (TG), Body Mass Index (BMI), and Cigarettes per day (CPD). The P-values come from two-sided statistical tests.

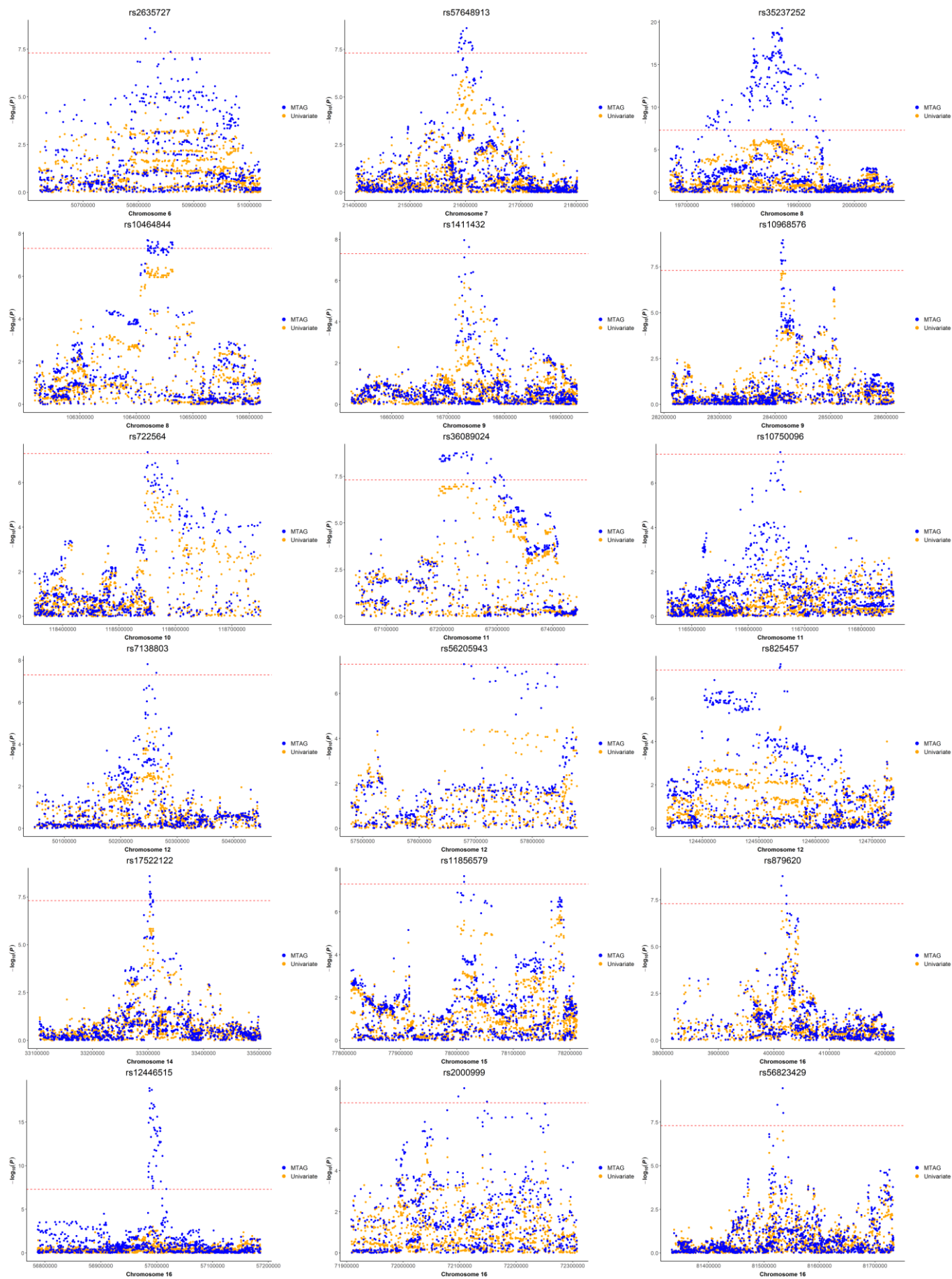


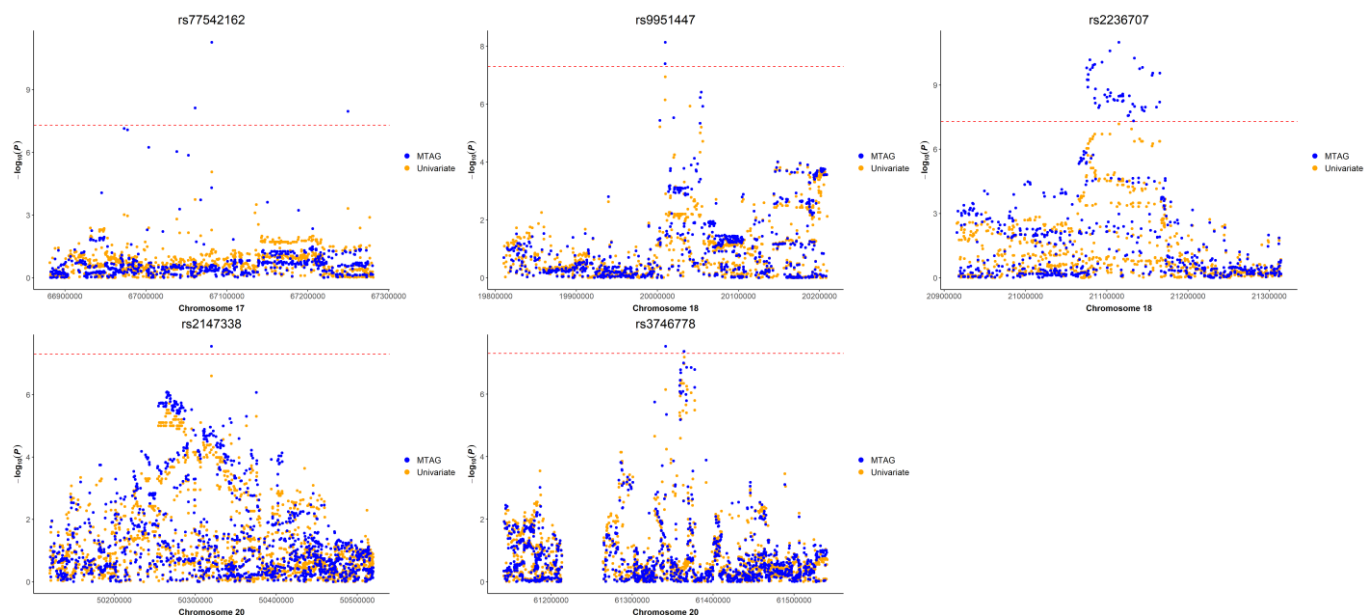
Supplementary Figure 1 Venn diagrams of A) 295 C-reactive protein (CRP) independent SNPs which are also genome-wide significantly associated with any of the other examined traits (high density lipoprotein levels, HDL; low density lipoprotein levels, LDL; triglyceride levels, TG; body mass index BMI; cigarettes per day, CPD) in multi-trait MTAG and B) the same focusing on the novel CRP SNPs only



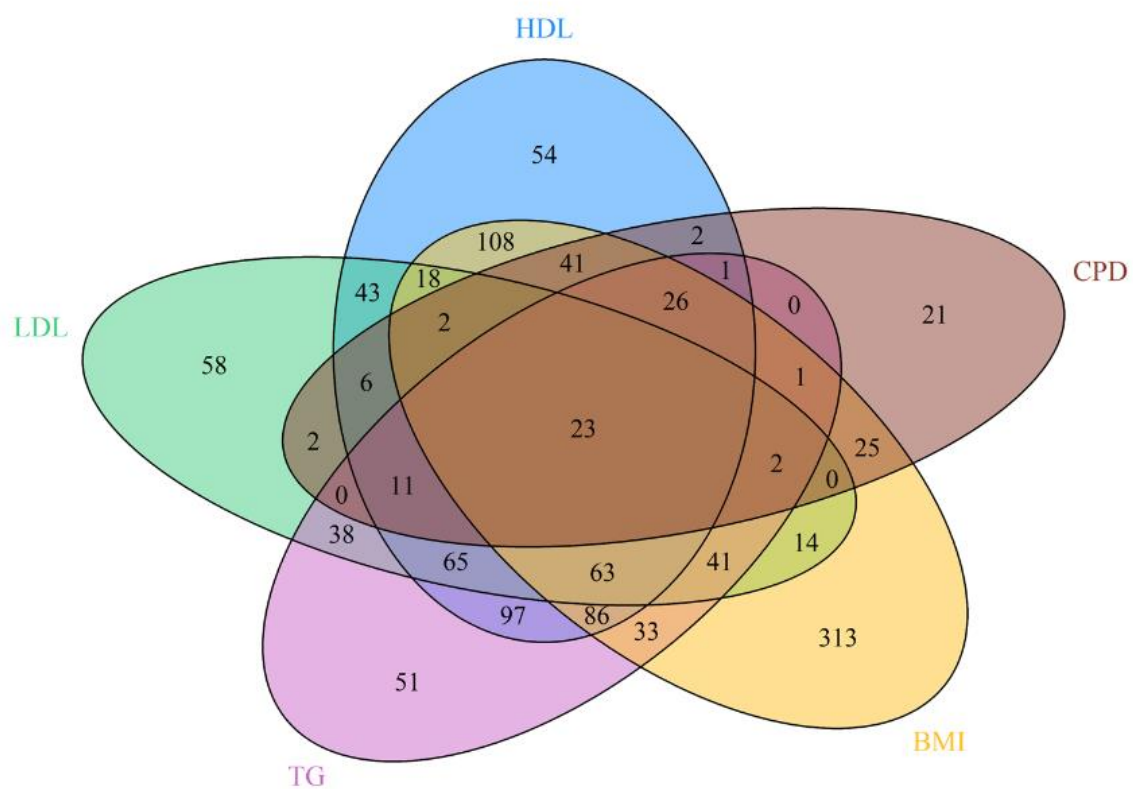
Supplementary Figure 2 Circular dendrogram presenting the novel C-reactive protein (CRP) loci. Starting from the center, the layers represent the chromosome, rsID, MTAG analysis (1 = multi-trait, 2 = bivariate on CRP-lipids, 3 = bivariate on CRP-BMI), and the mapped genes, respectively. The loci from multi-trait MTAG are colored with blue and from bivariate with red. BMI = Body mass index; CPD = Cigarettes per day; CRP = C-reactive protein; HDL = High-Density lipoprotein; LDL = Low-Density lipoprotein; TG = Triglycerides.



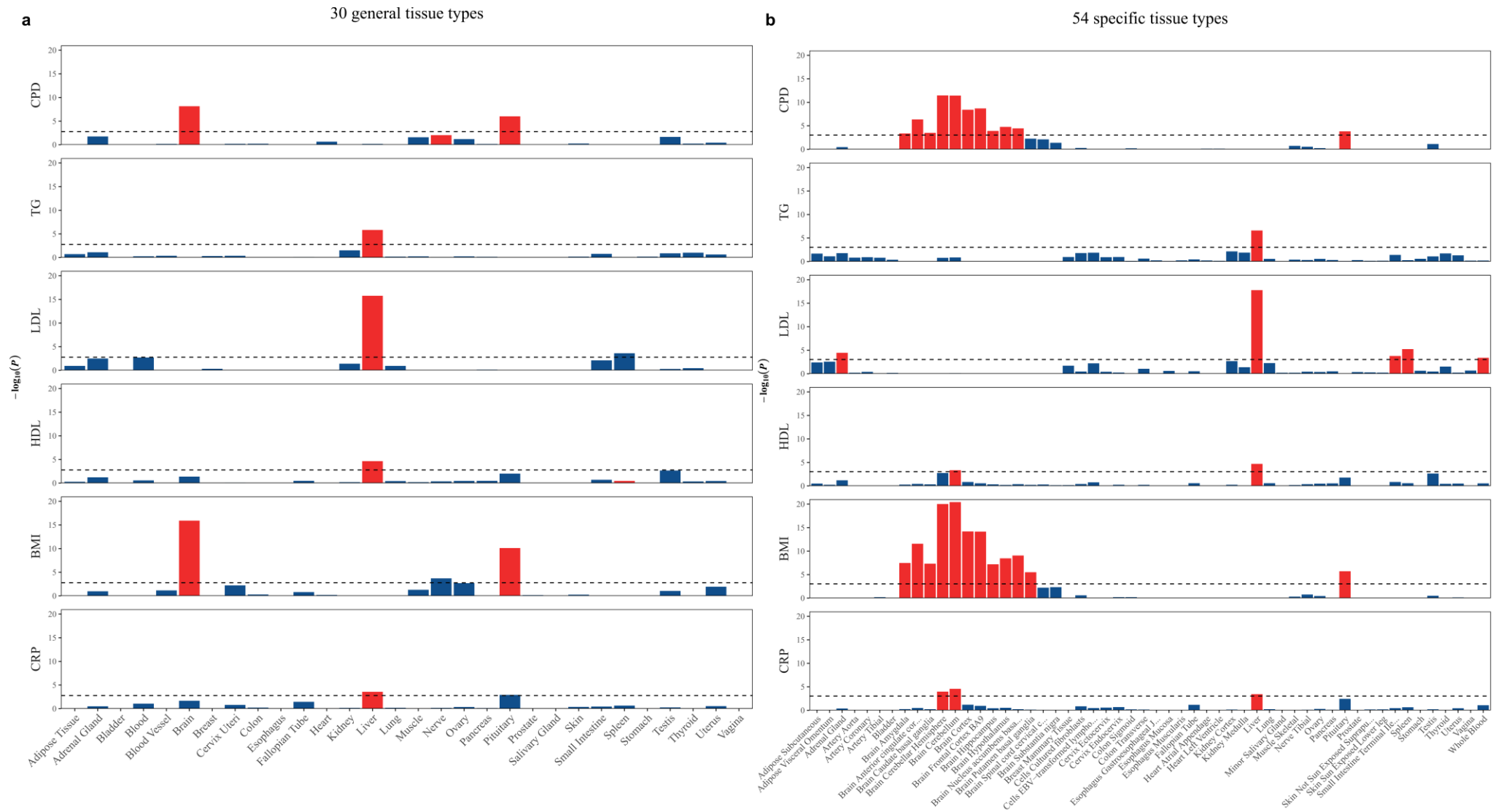




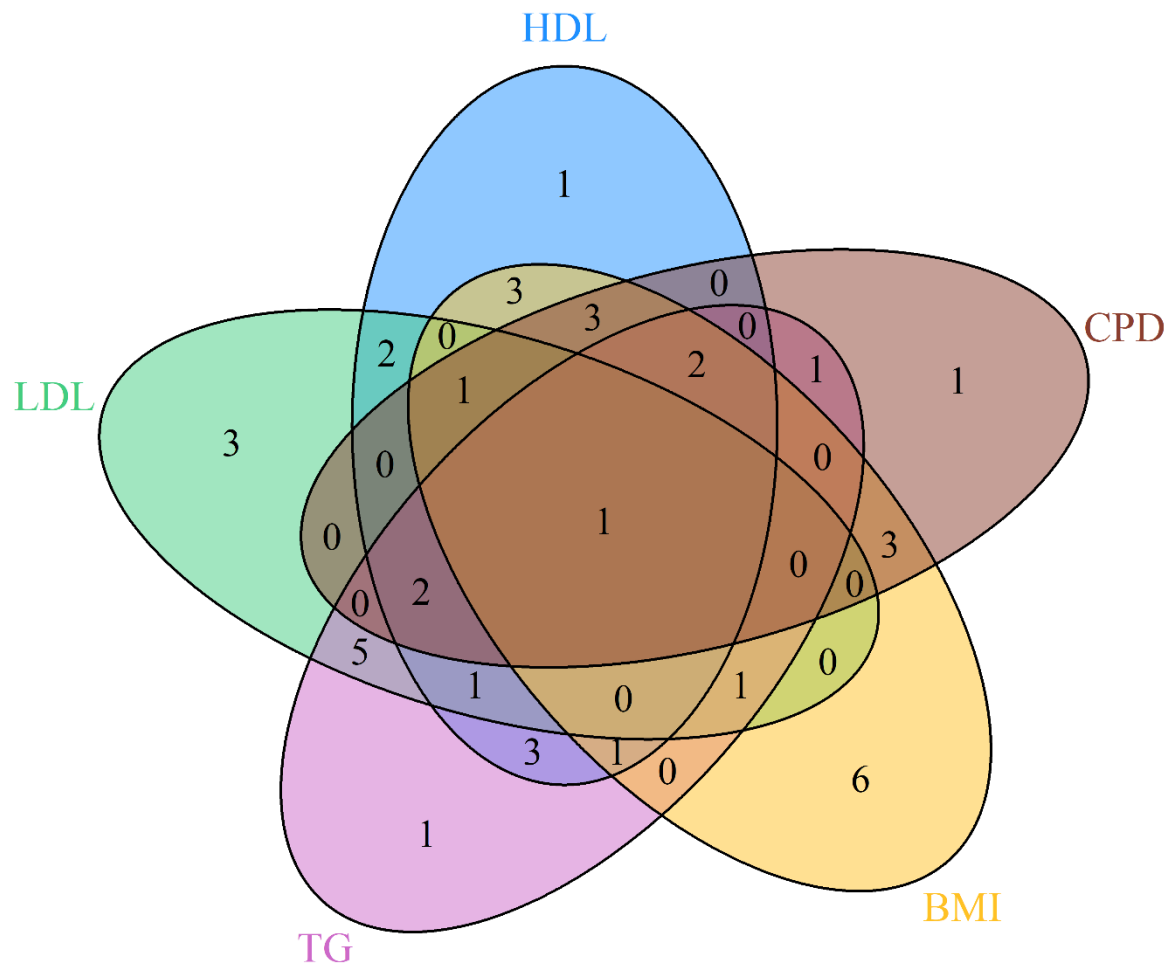
Supplementary Figure 3 Regional plots of the 41 novel C-reactive protein (CRP) loci comparing the results from the MTAG (blue) with the respective from the univariate UKB-CHARGE meta-analysis (yellow). The P-values come from two-sided statistical tests.



Supplementary Figure 4 Venn diagram of C-Reactive Protein (CRP) associated genes which are also associated with any of High-Density Lipoprotein (HDL), Low-Density Lipoprotein (LDL), Triglycerides (TG), Body Mass Index (BMI), and Cigarettes per day (CPD)

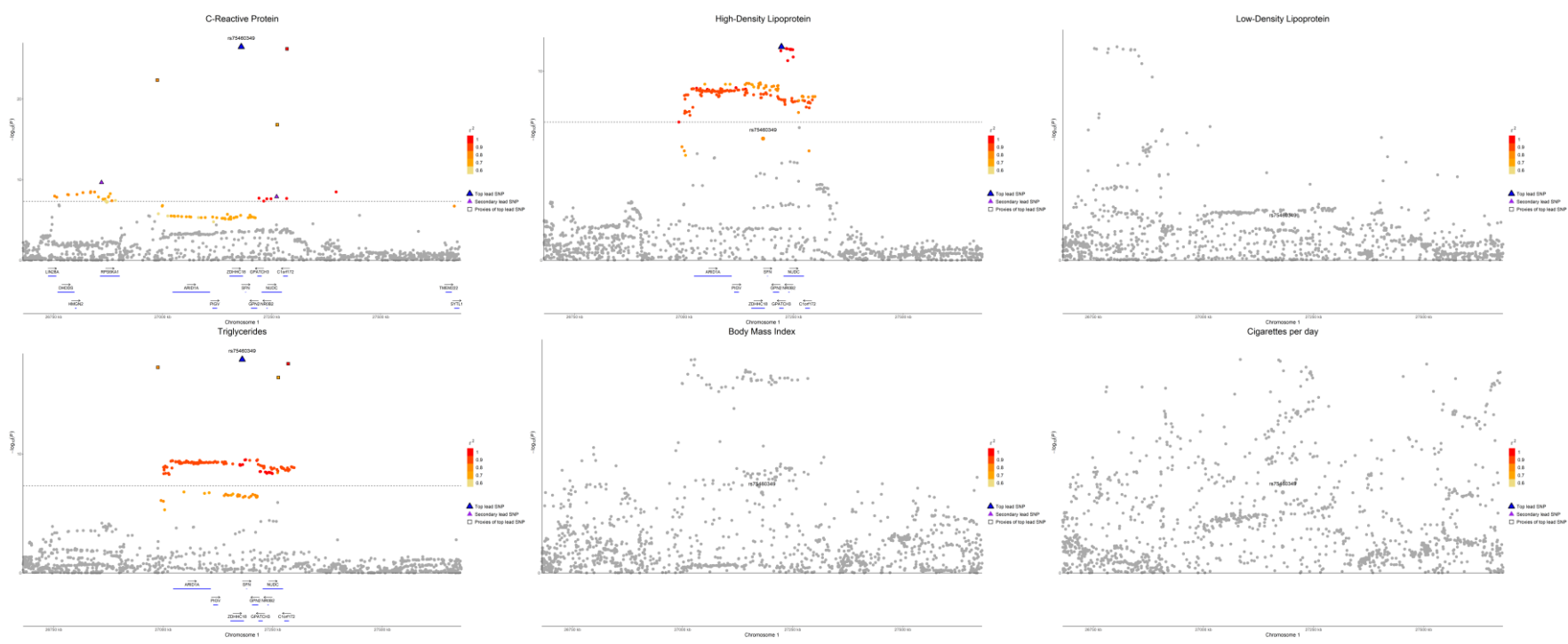


Supplementary Figure 5 Tissue expression analysis of a) 30 general and b) 54 more specific tissue types obtained from Genotype-Tissue Expression version 8 (GTEx v8) for C-Reactive Protein (CRP), Body Mass Index (BMI), High-Density Lipoprotein (HDL), Low-Density Lipoprotein (LDL), Triglycerides (TG), and Cigarettes per day (CPD) using MAGMA gene-property test. The P-values come from two-sided statistical tests. Horizontal line represents the Bonferroni threshold (a: $P=1.7 \times 10^{-3}$; b: $P=9.3 \times 10^{-4}$) and Bonferroni significant tissues are colored with red

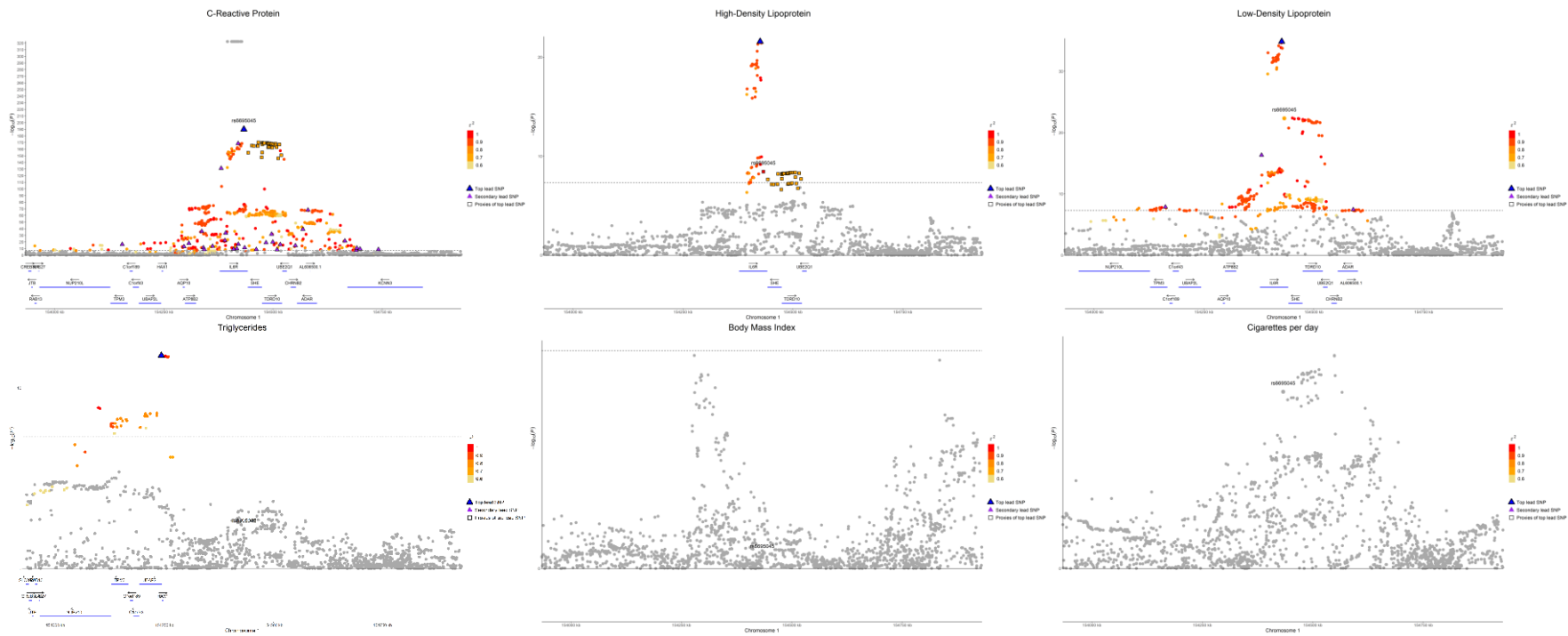


Supplementary Figure 6 Venn diagram of the 41 candidate causal variants which colocalize between C-Reactive Protein levels (CRP) and any of the other examined traits: High-Density Lipoprotein (HDL), Low-Density Lipoprotein (LDL), Triglycerides (TG), Body Mass Index (BMI), and Cigarettes per day (CPD)

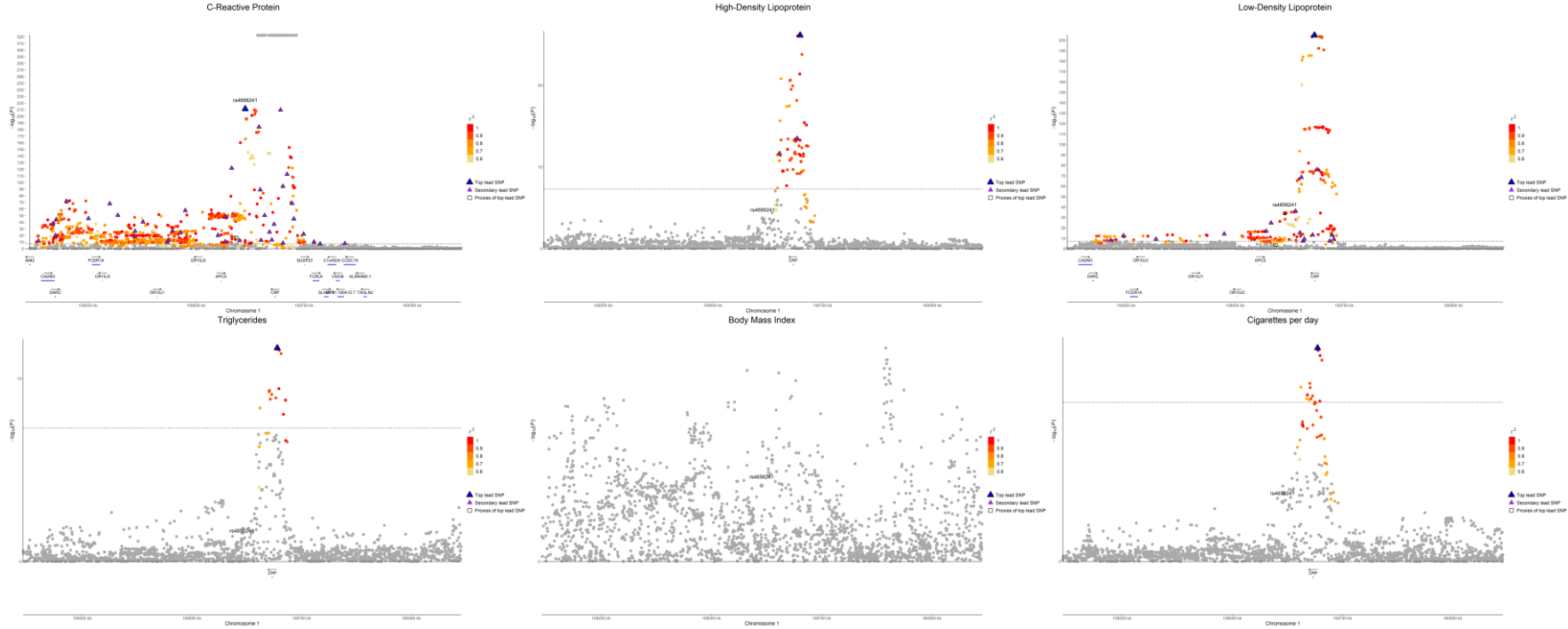
rs75460349



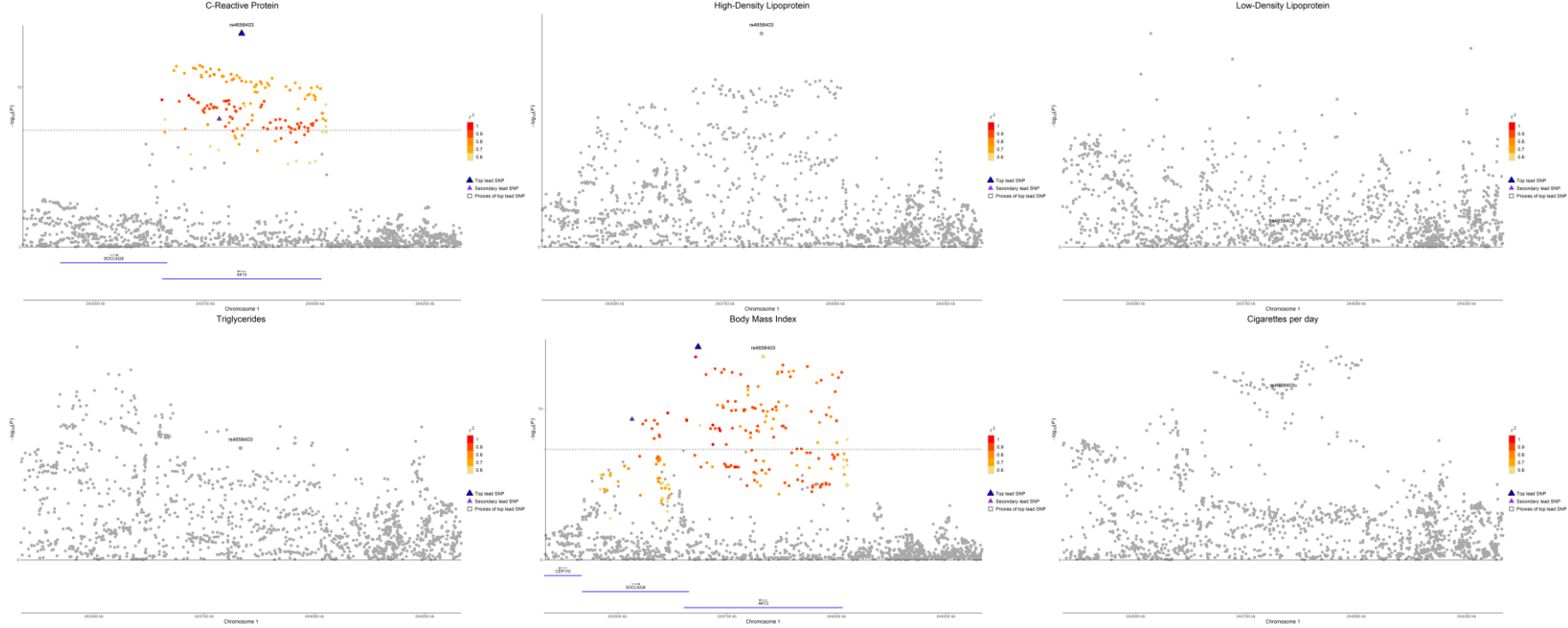
rs61812598



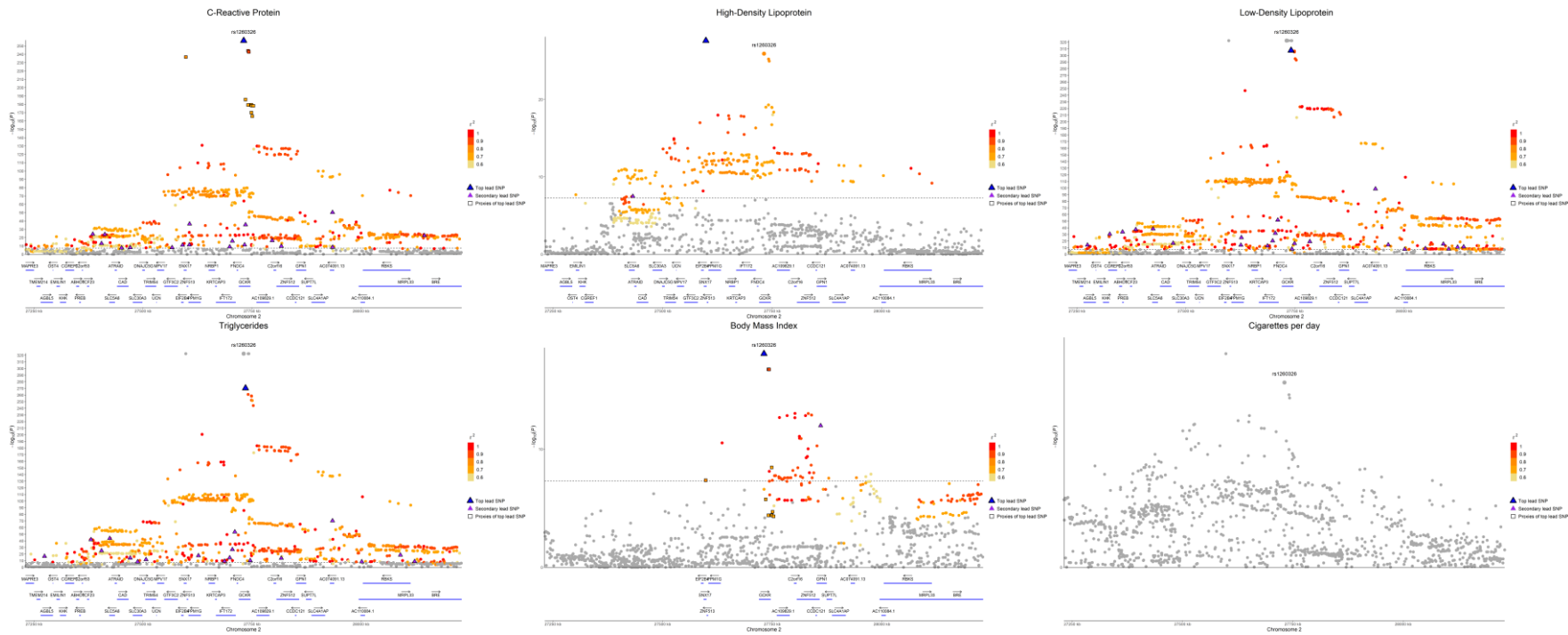
rs2211320



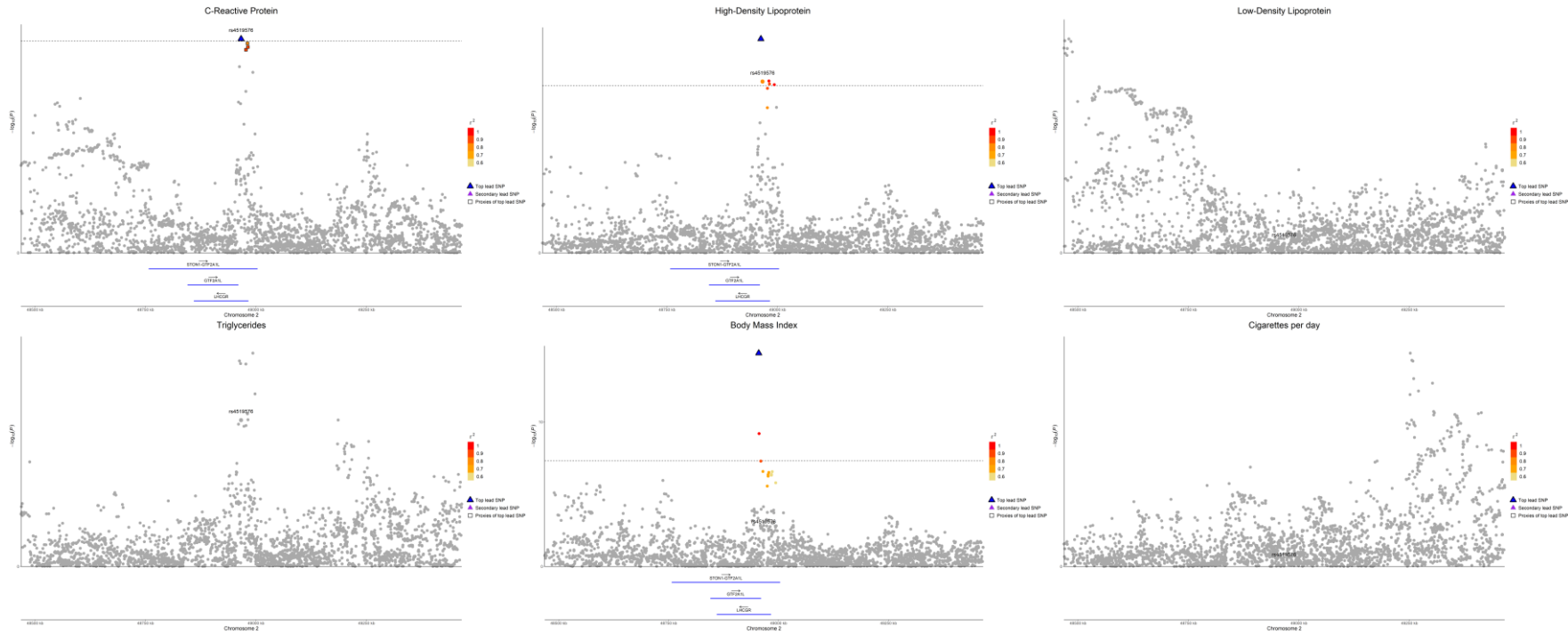
rs4658403



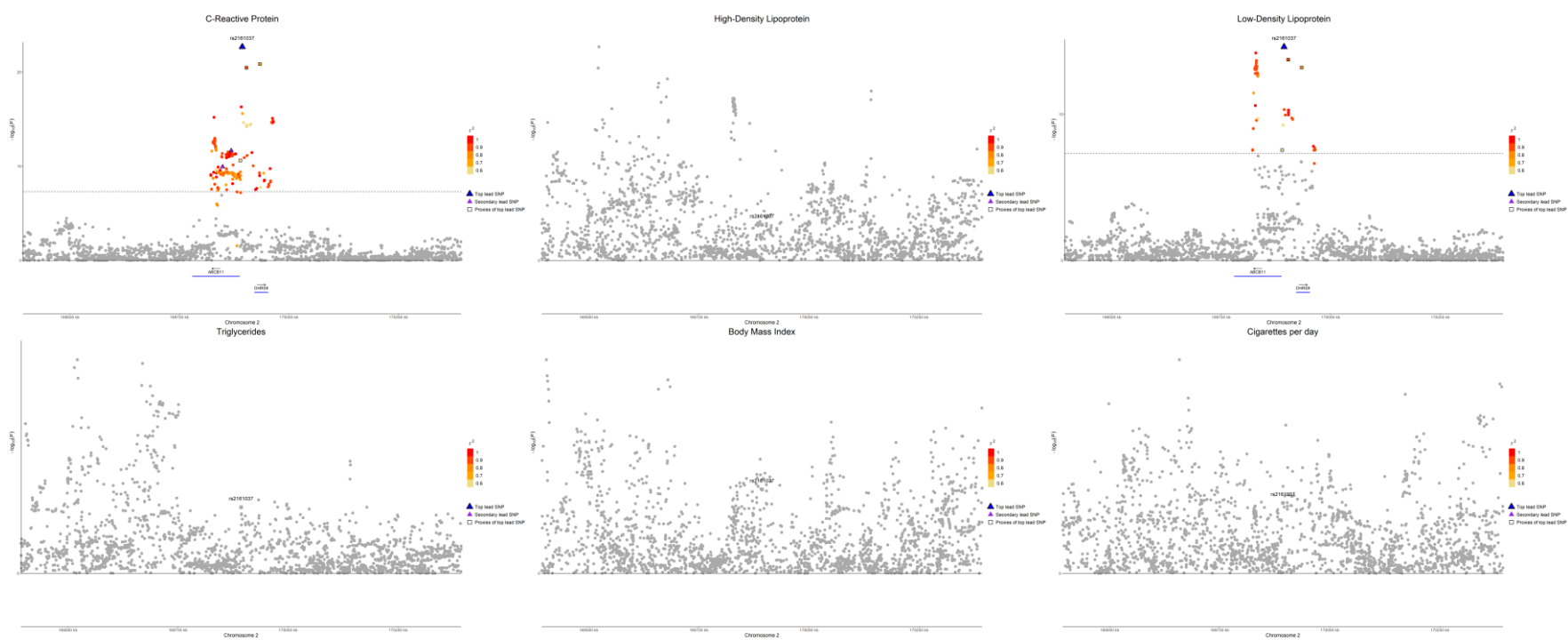
rs1260326



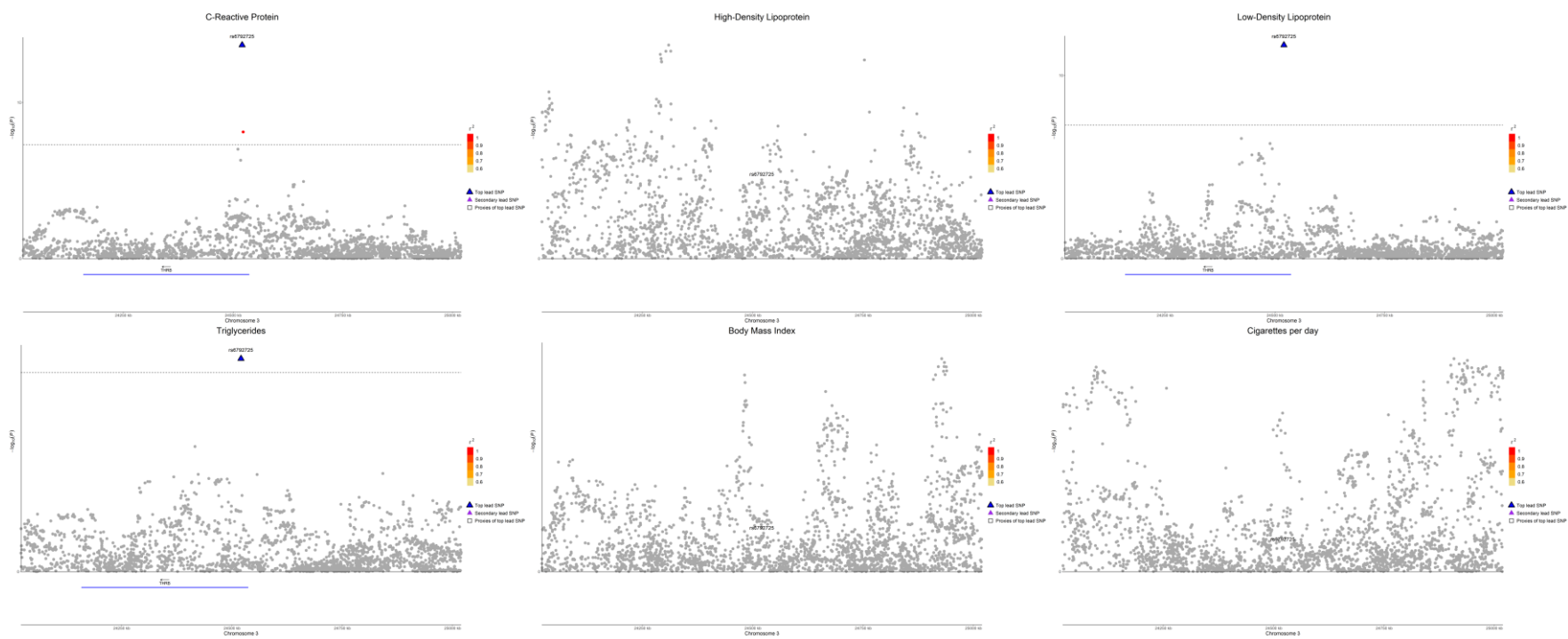
rs17326656



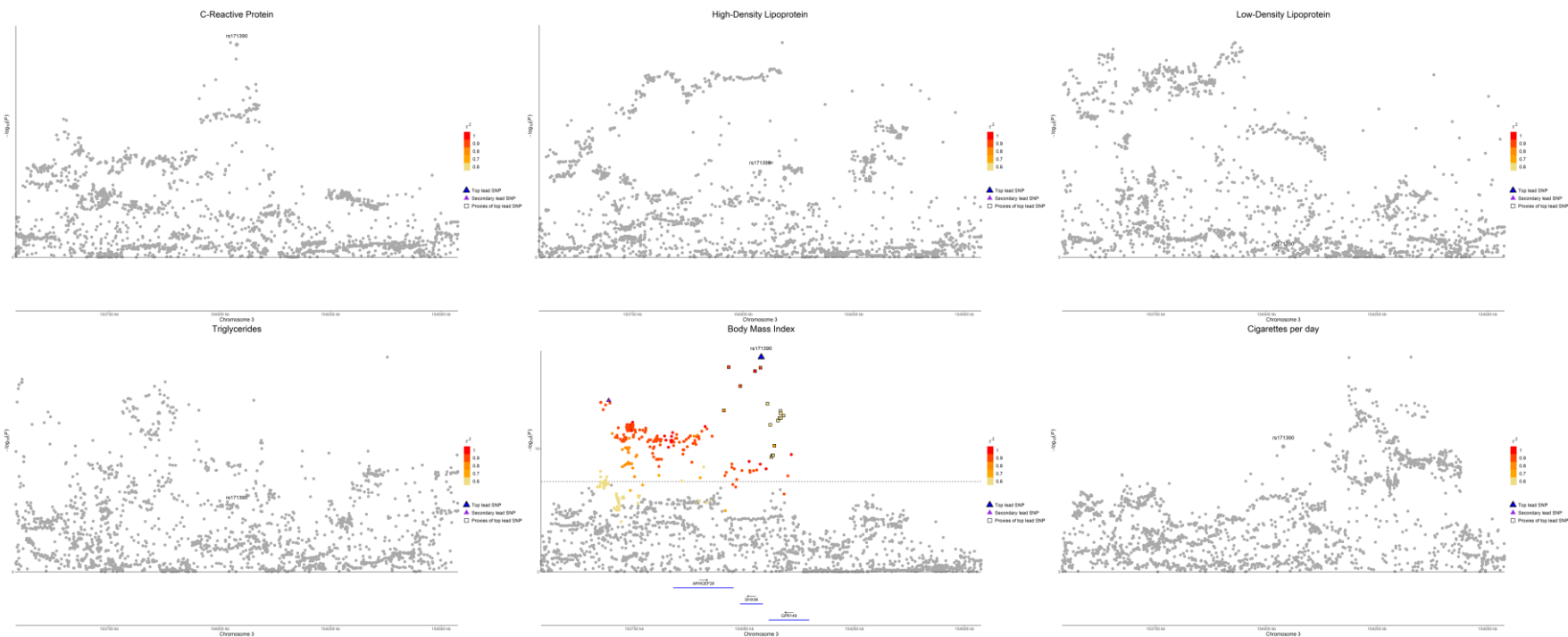
rs2161037



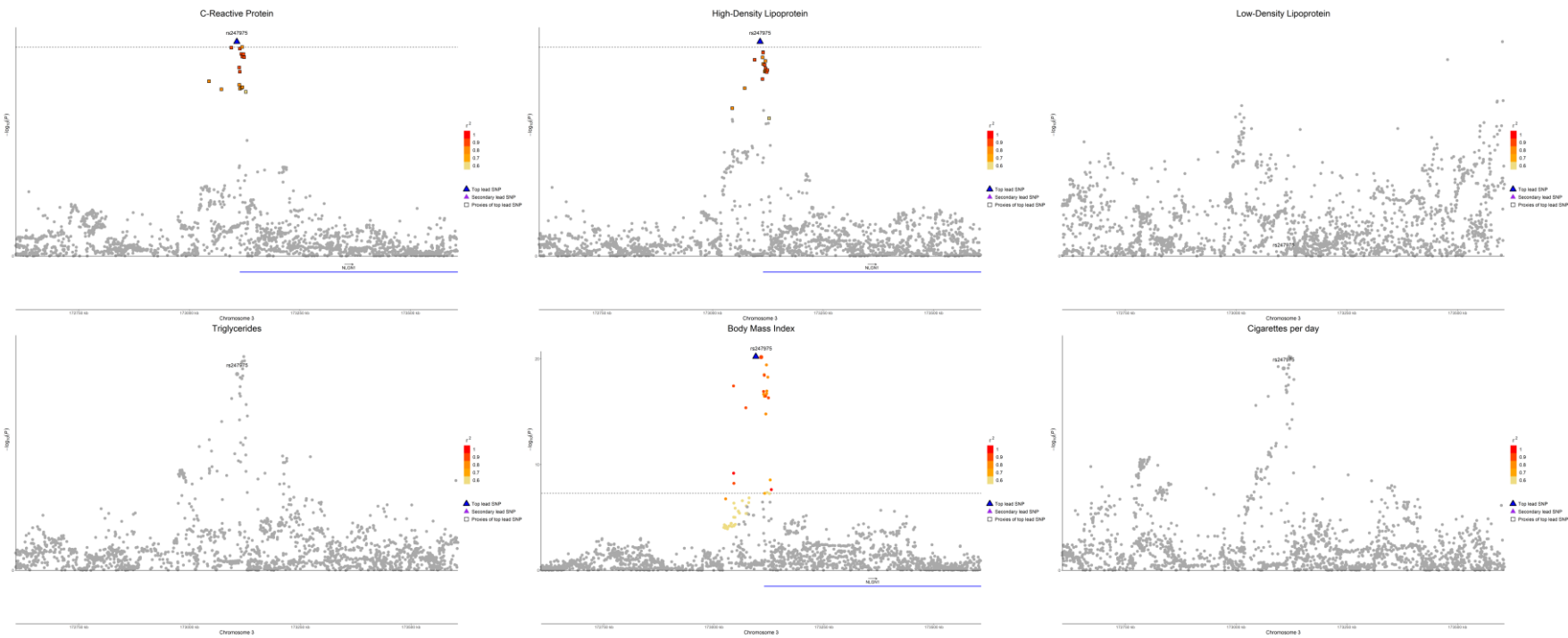
rs6792725



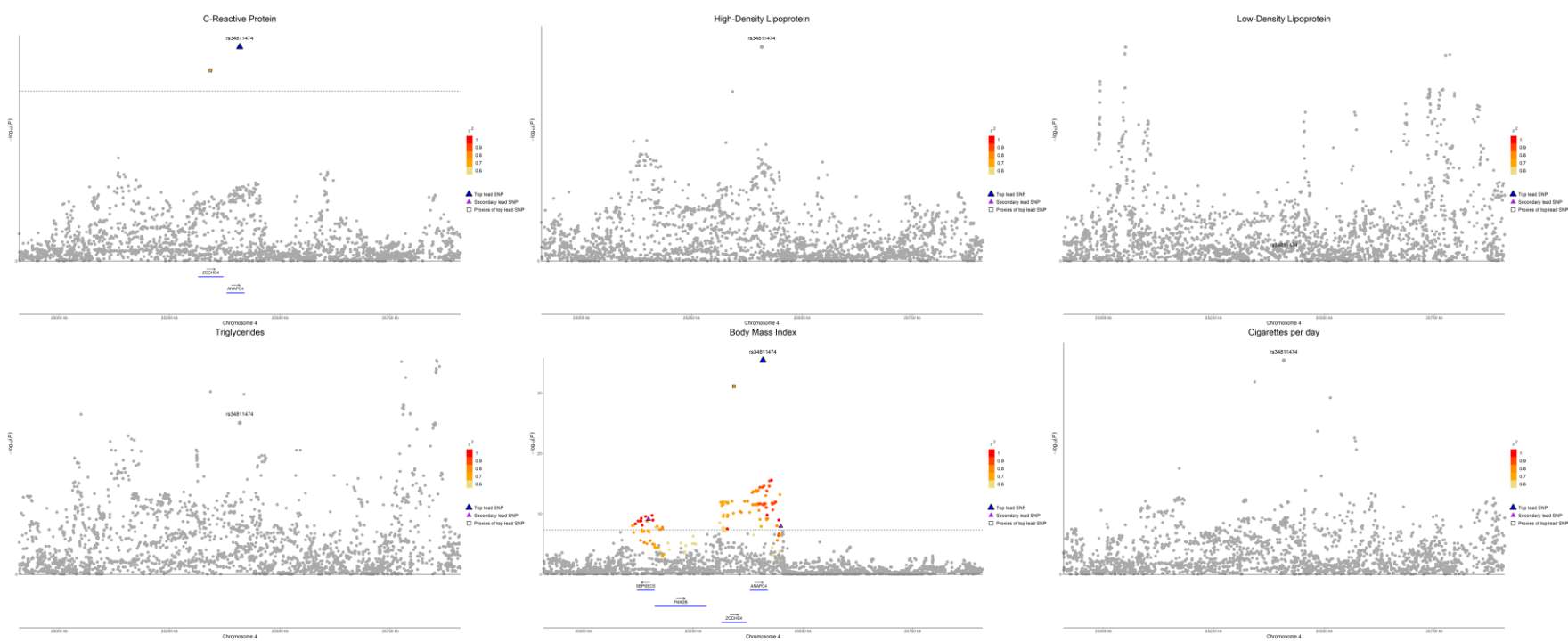
rs171390



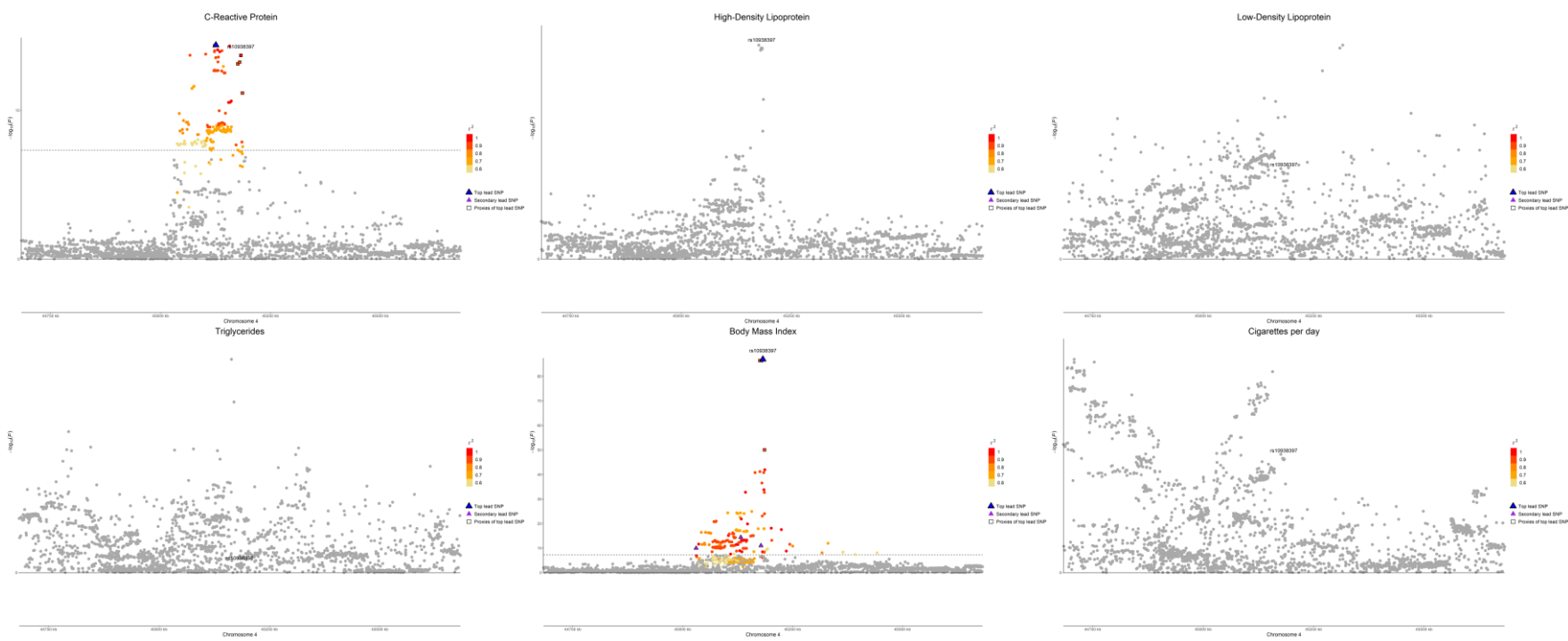
rs247975



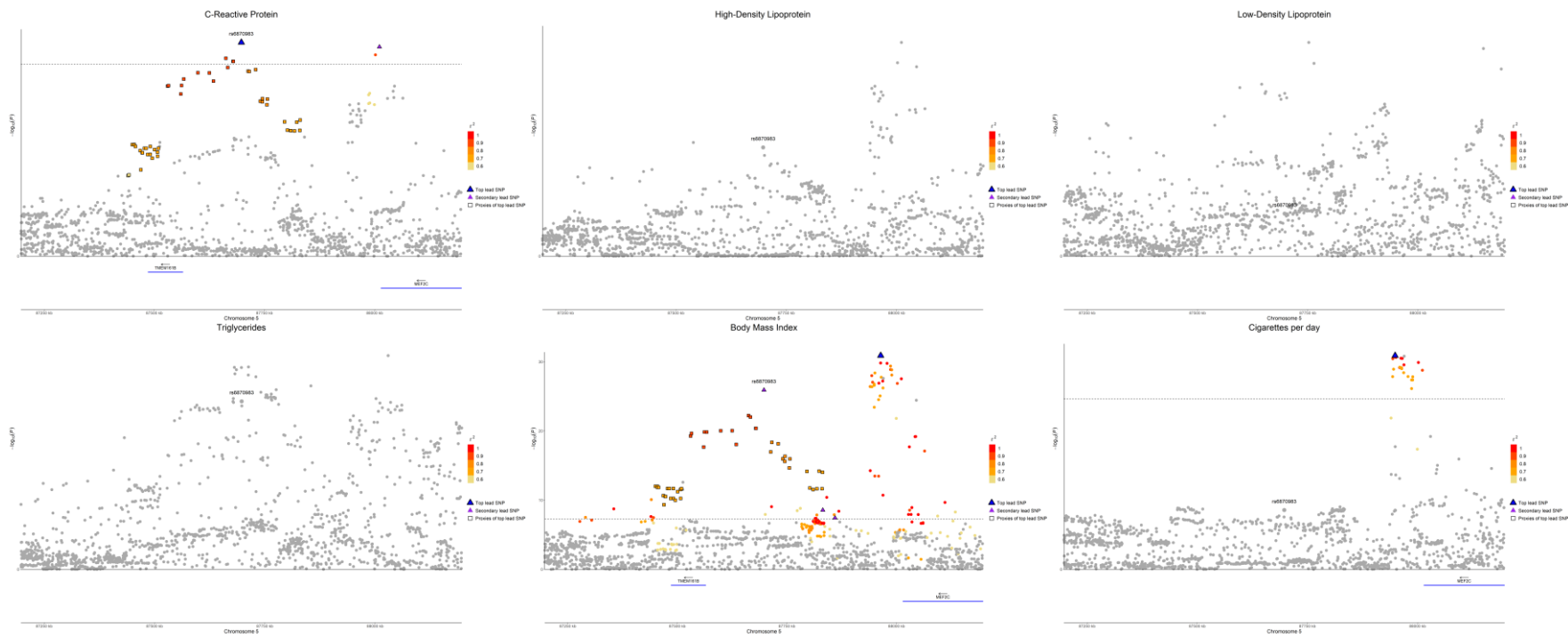
rs34811474



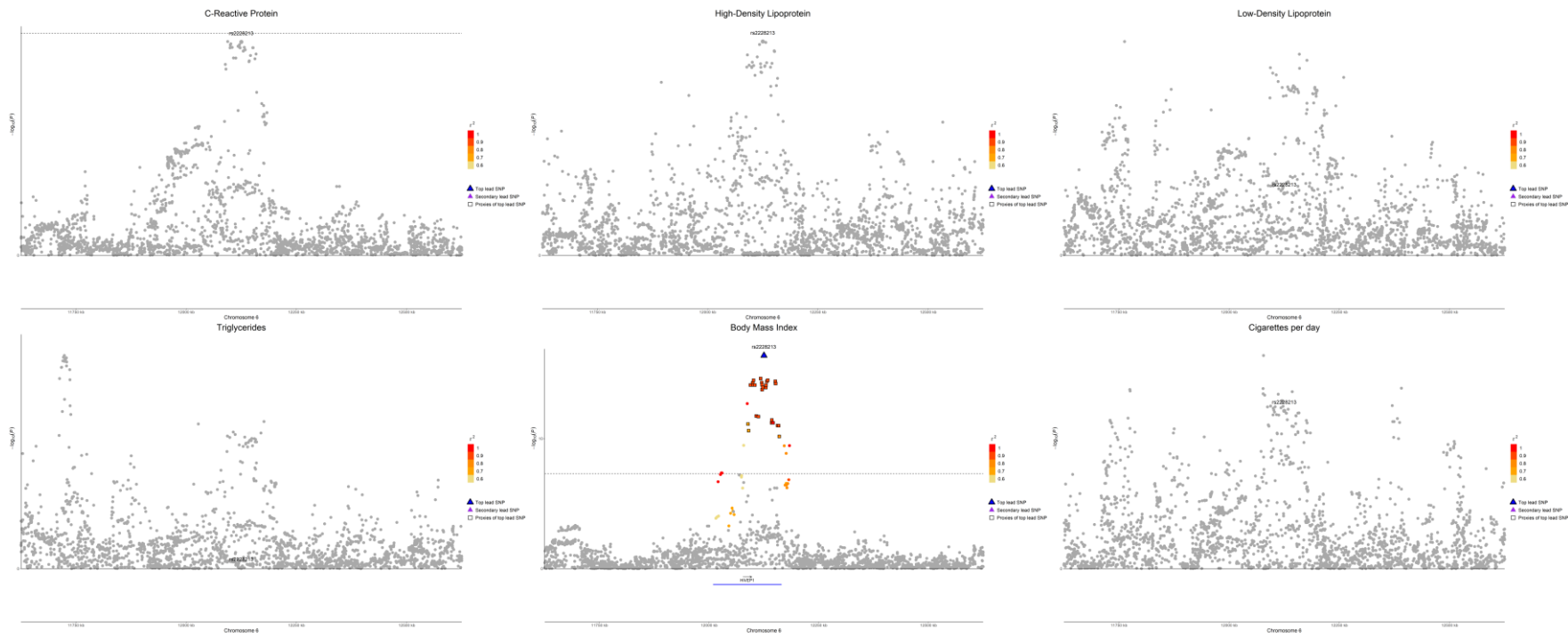
rs10938397



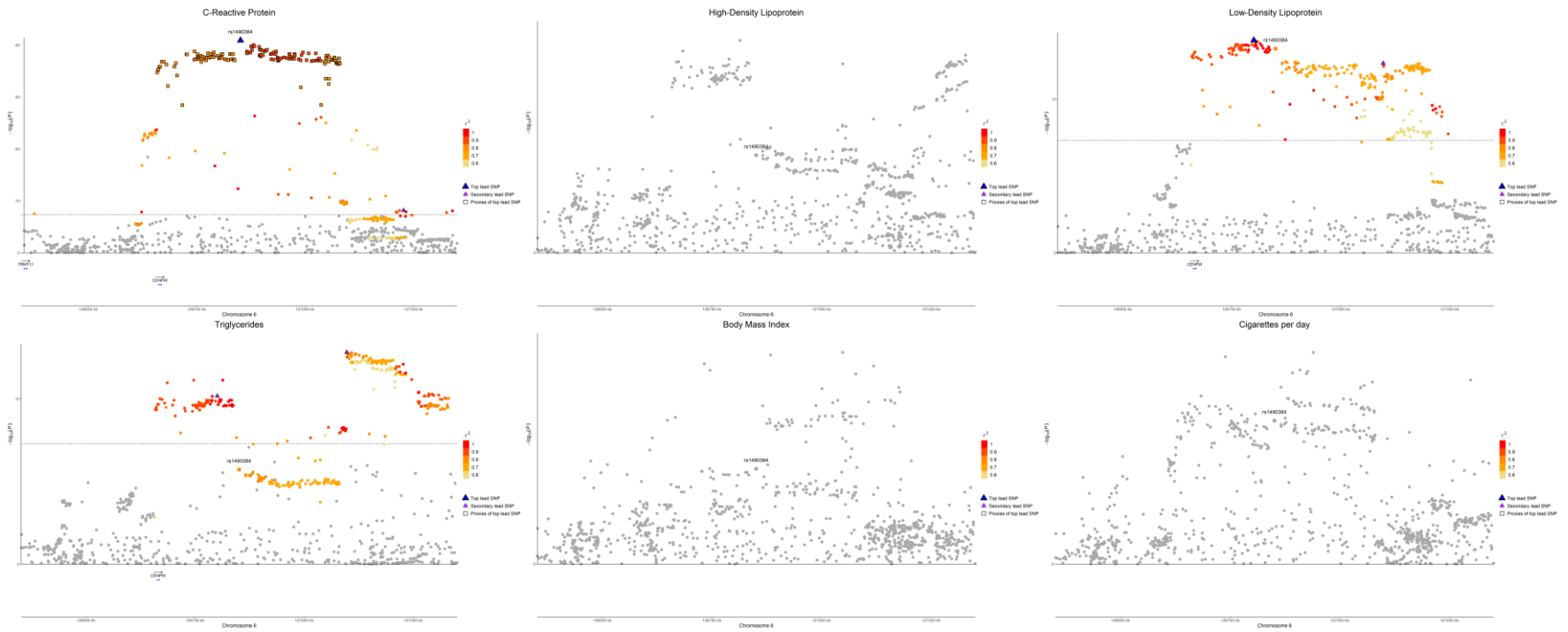
rs6870983



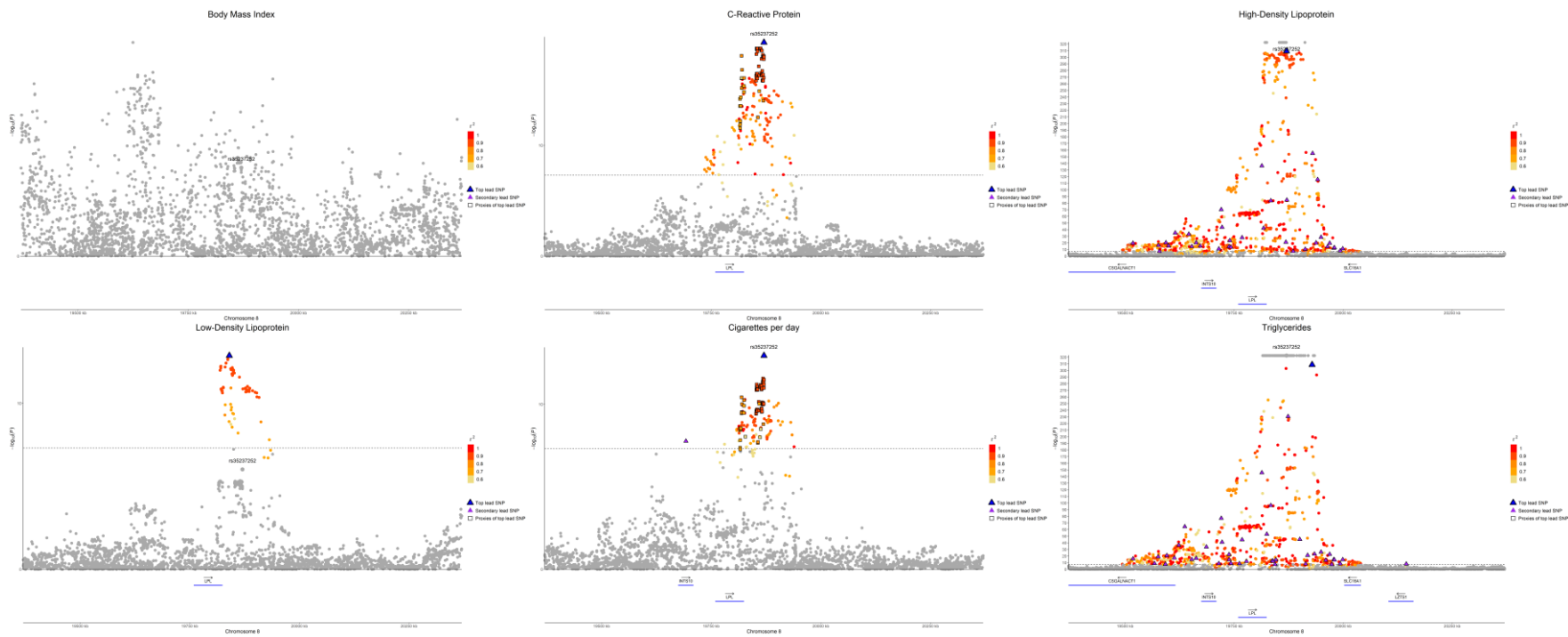
rs2228213



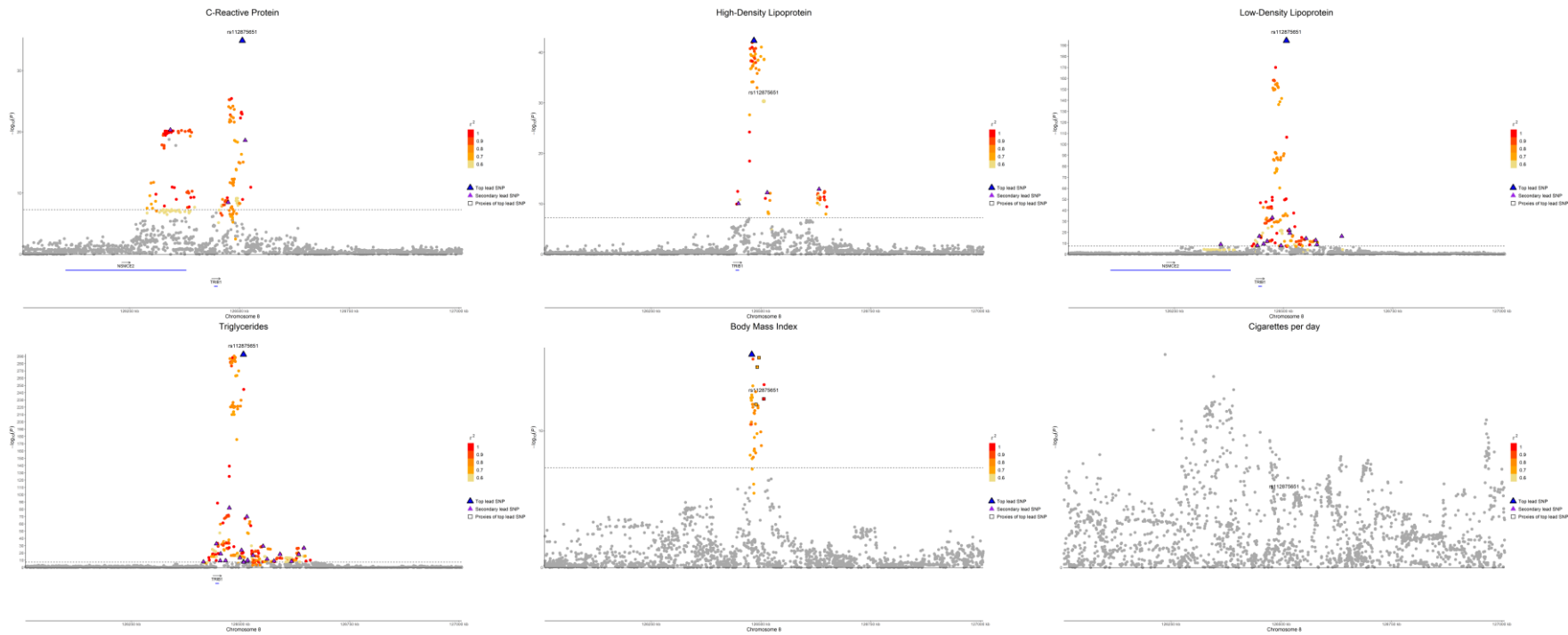
rs1490384



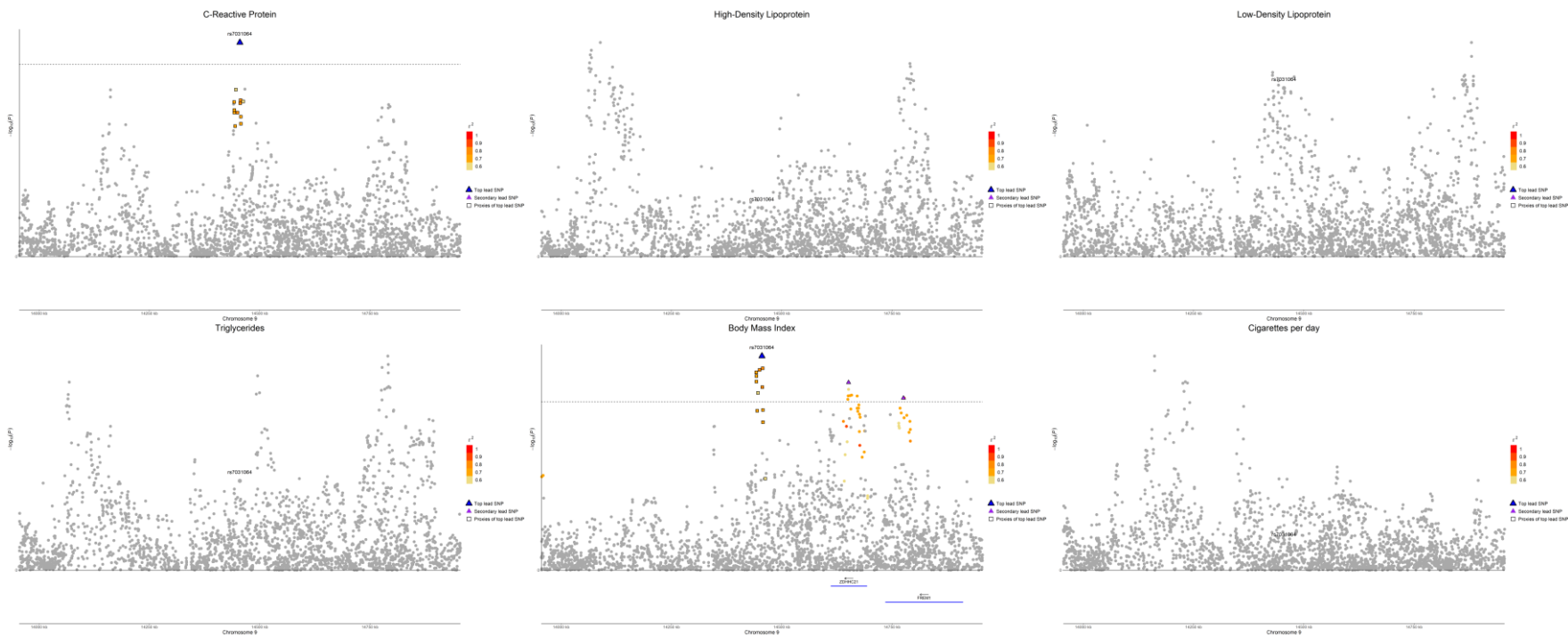
rs35237252



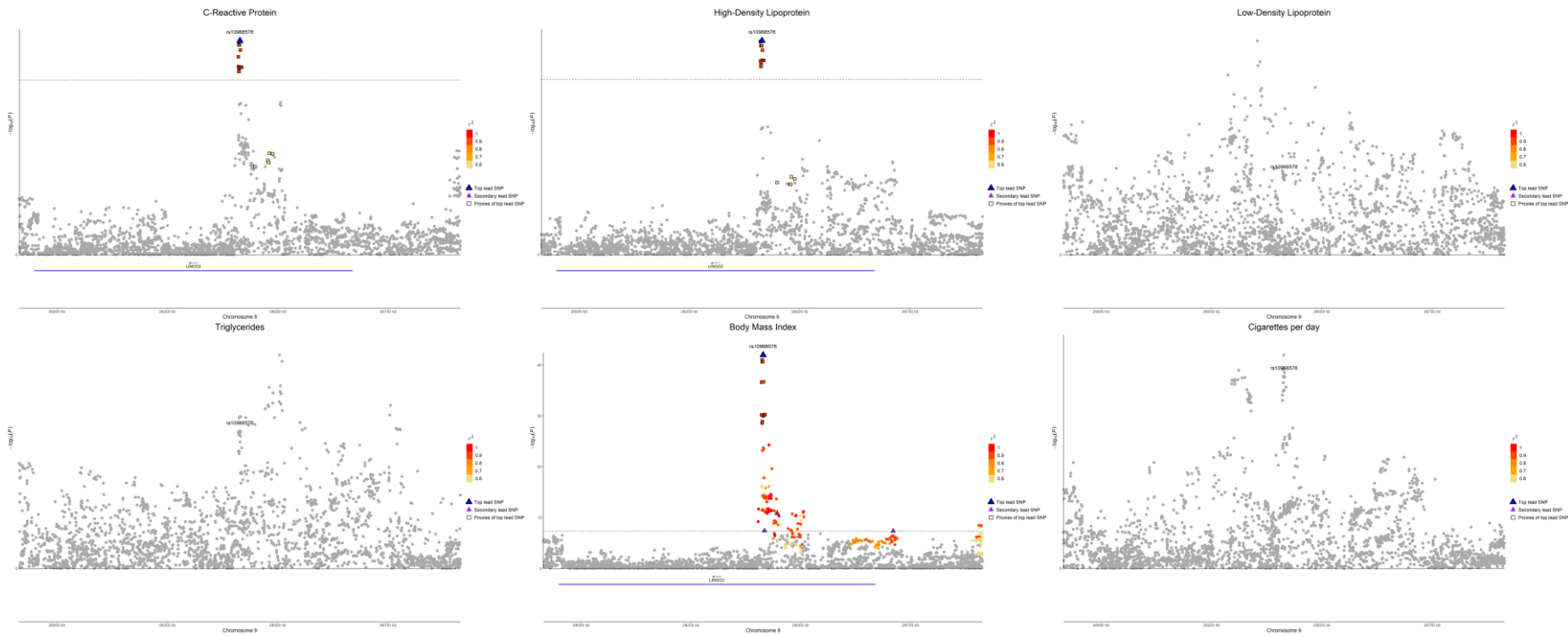
rs112875651



rs7031064



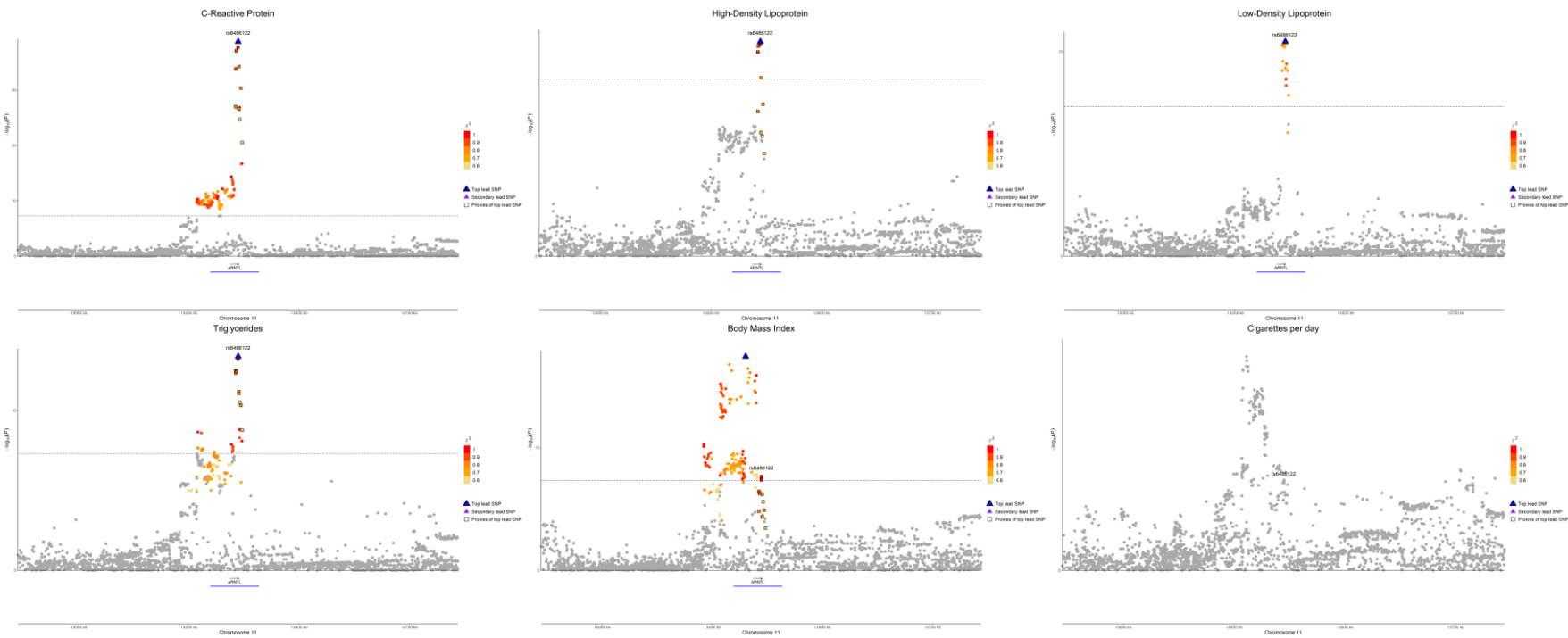
rs10968576



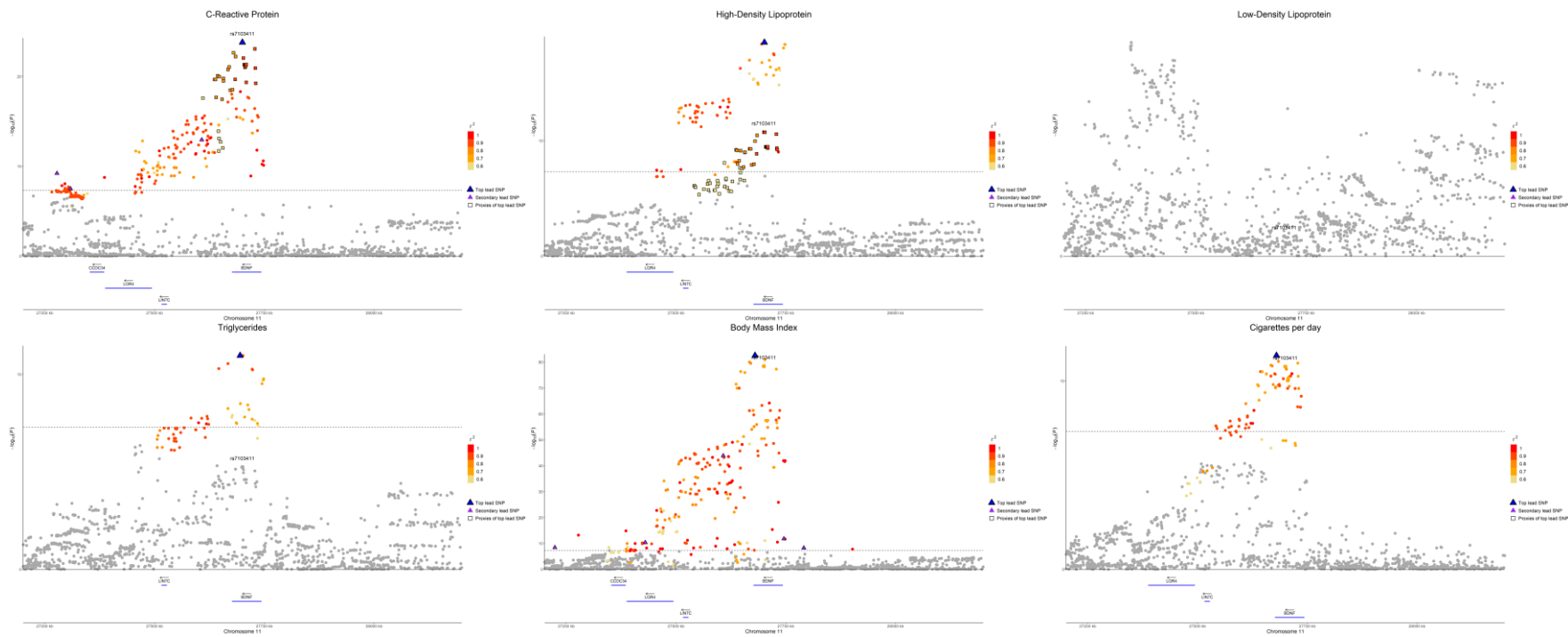
rs11012732



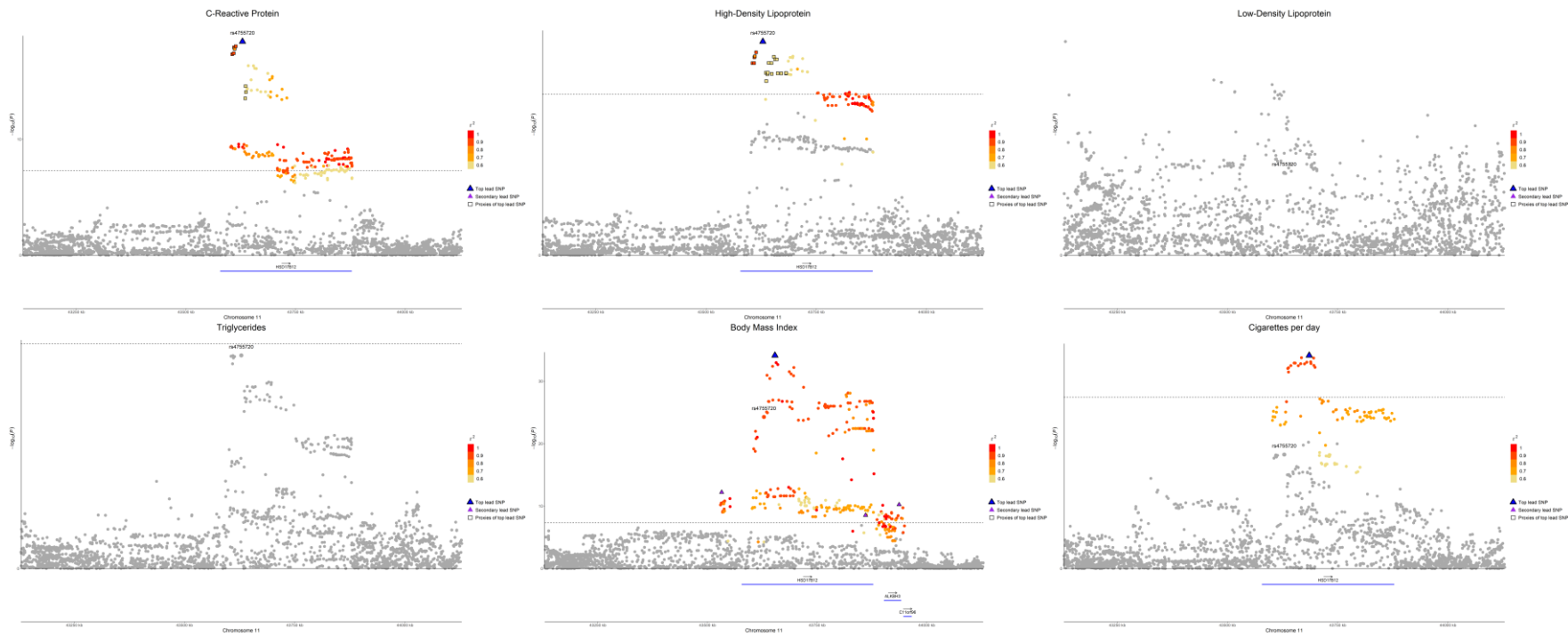
rs6486122



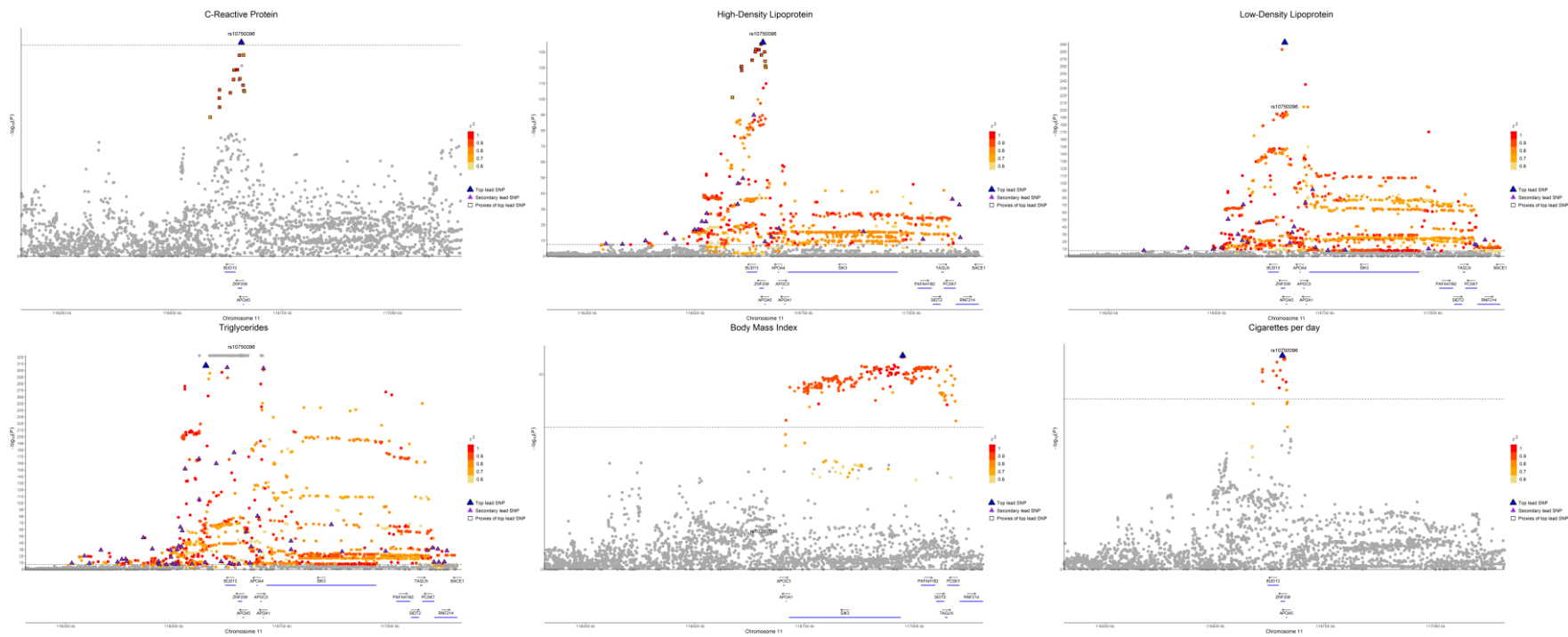
rs6265



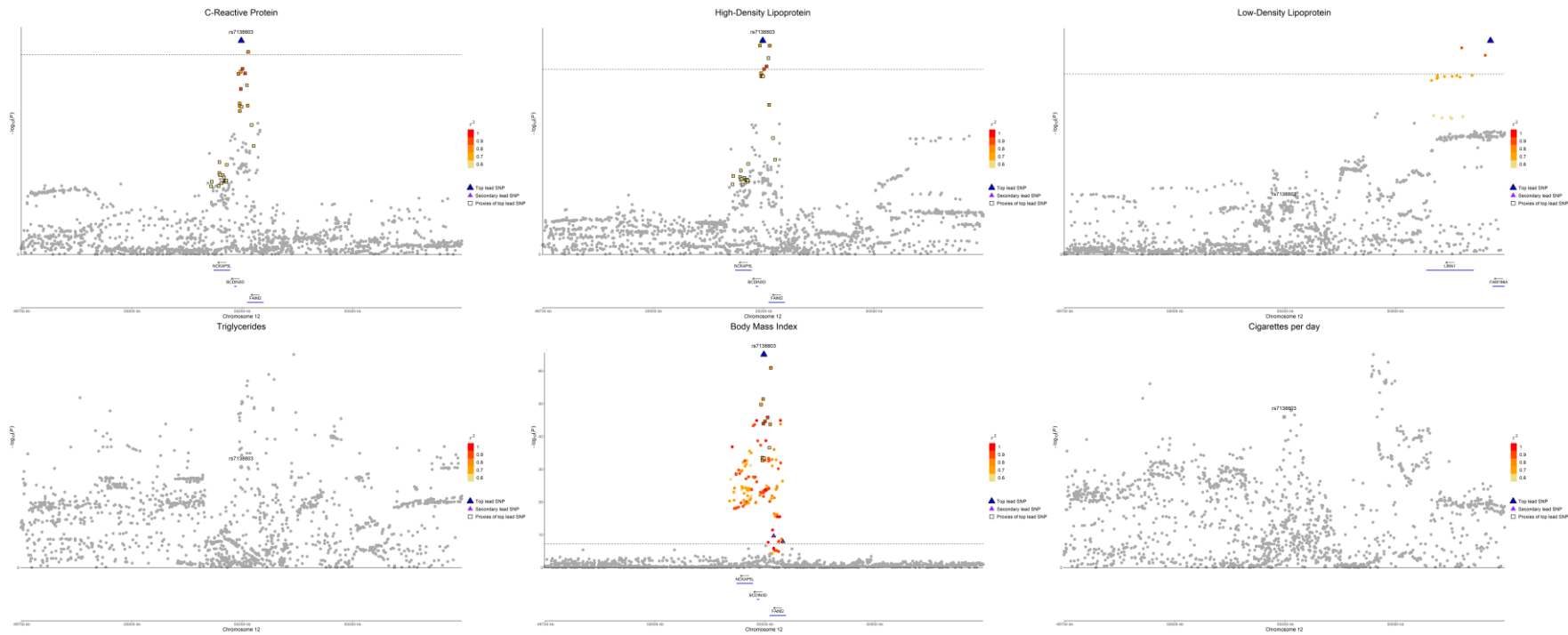
rs4755720



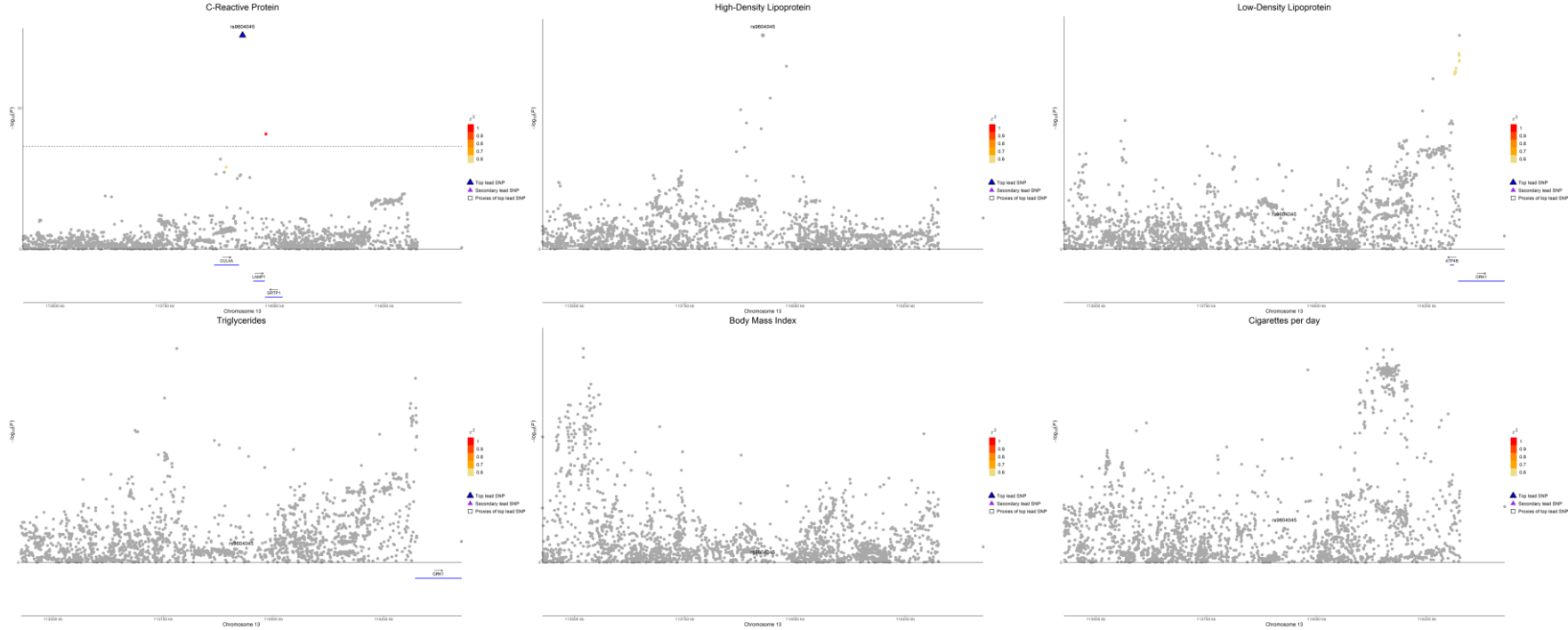
rs3741298



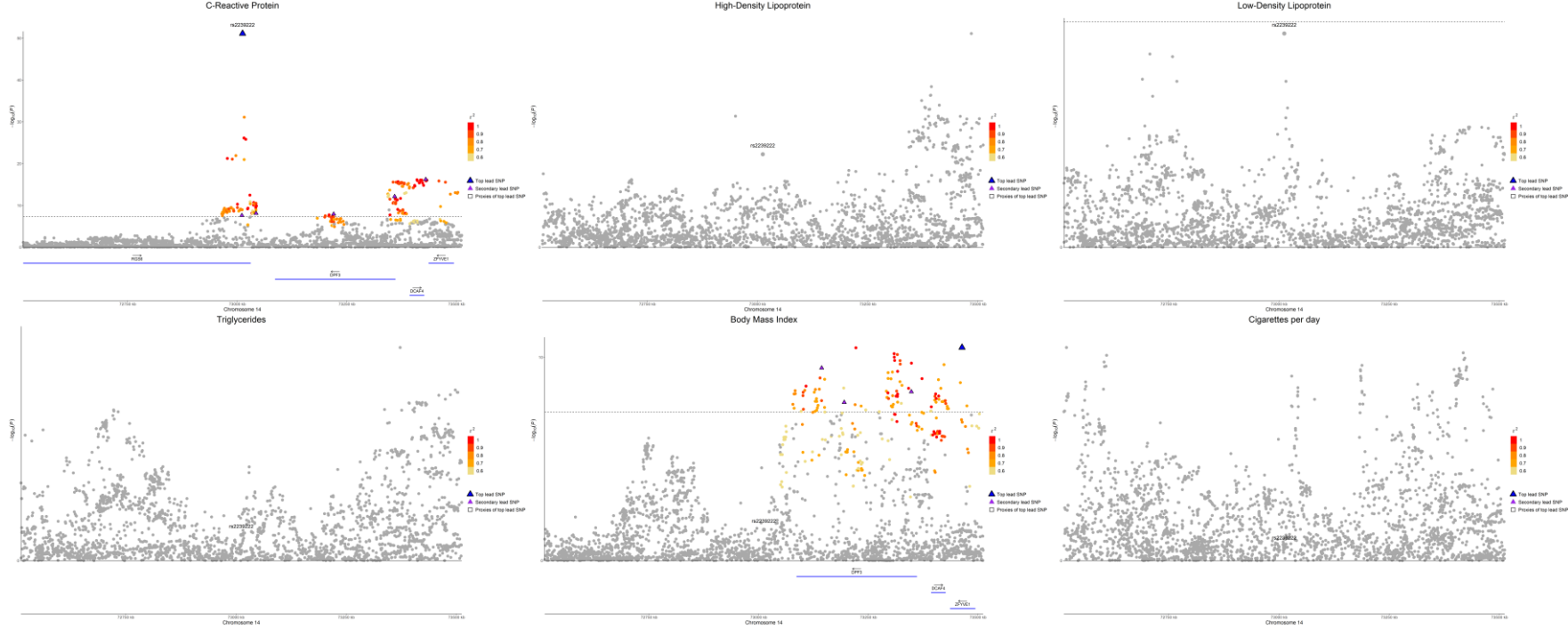
rs7138803



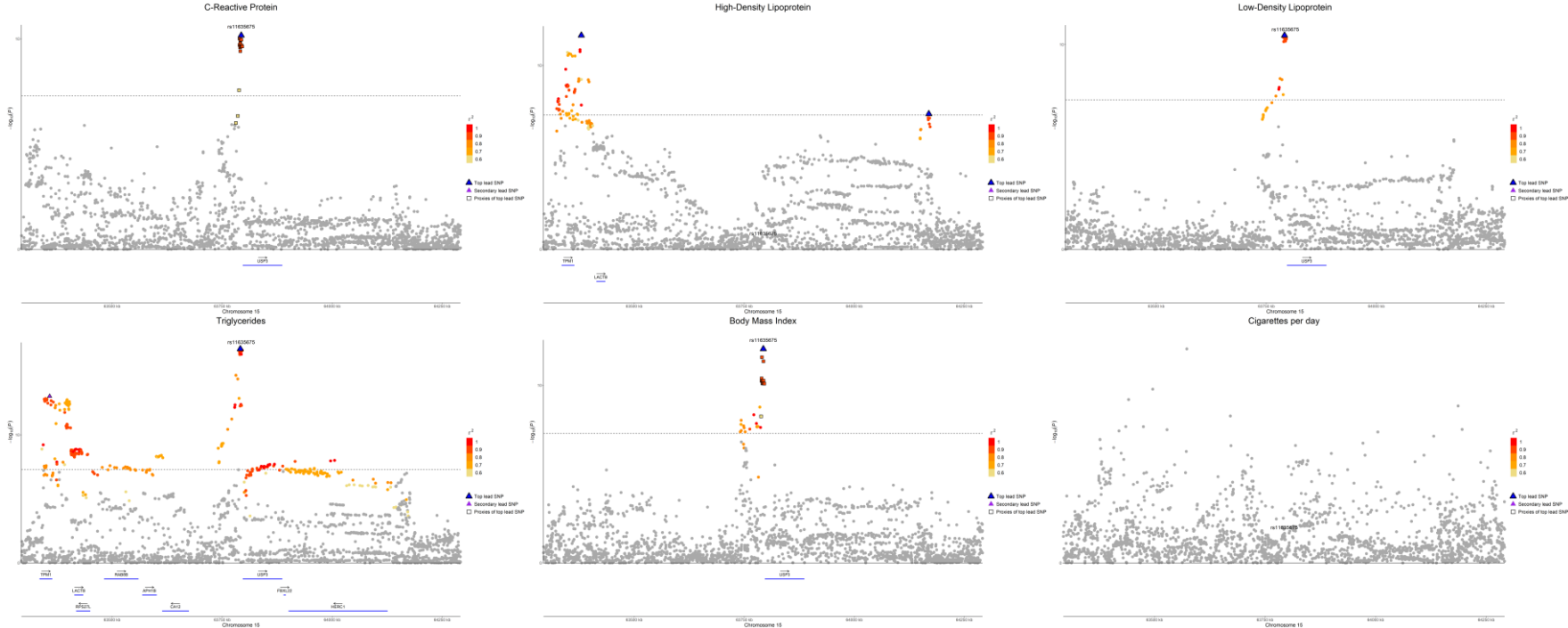
rs9604045



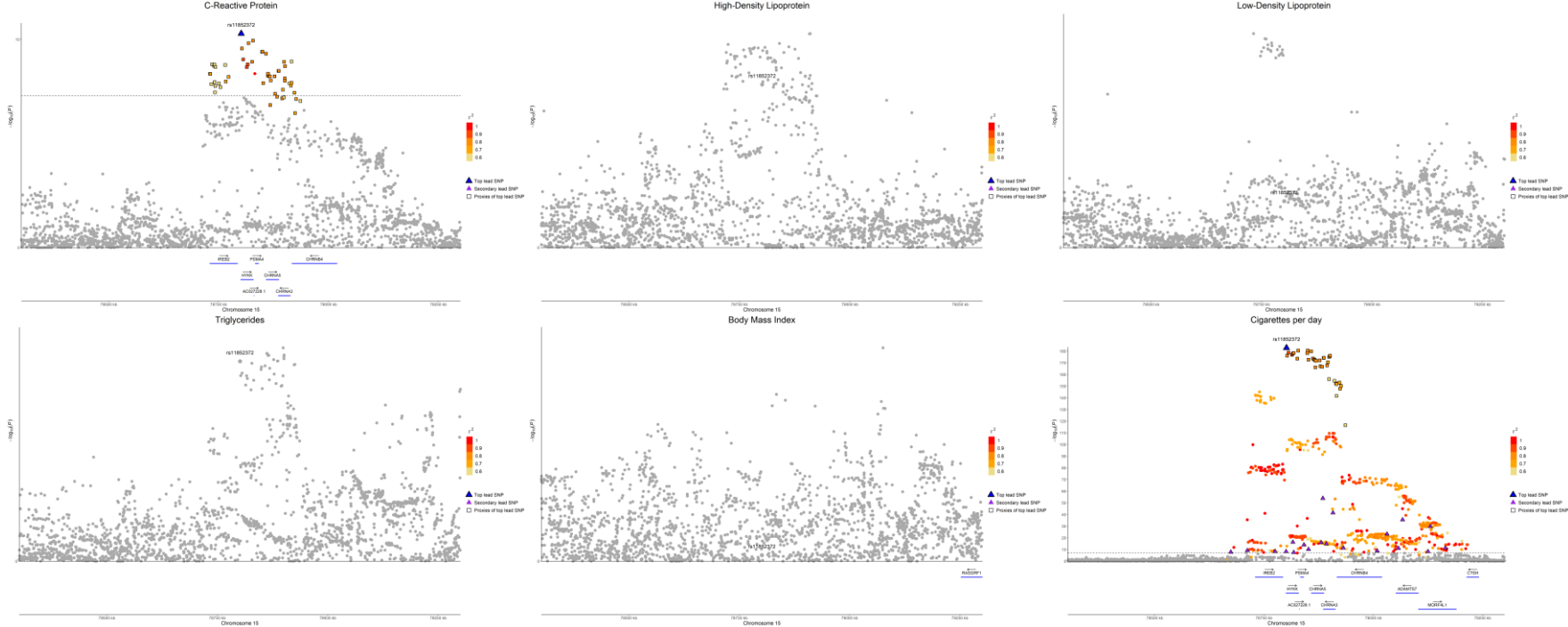
rs2239222



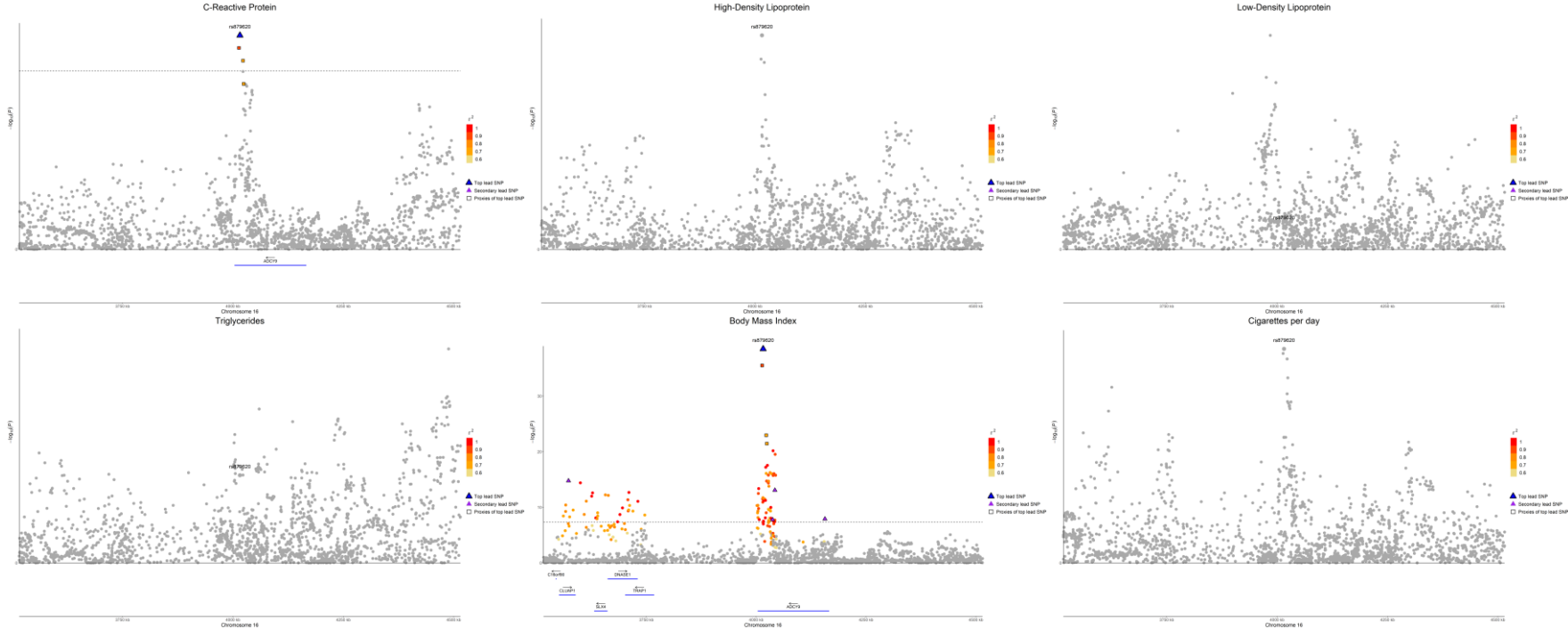
rs11635675



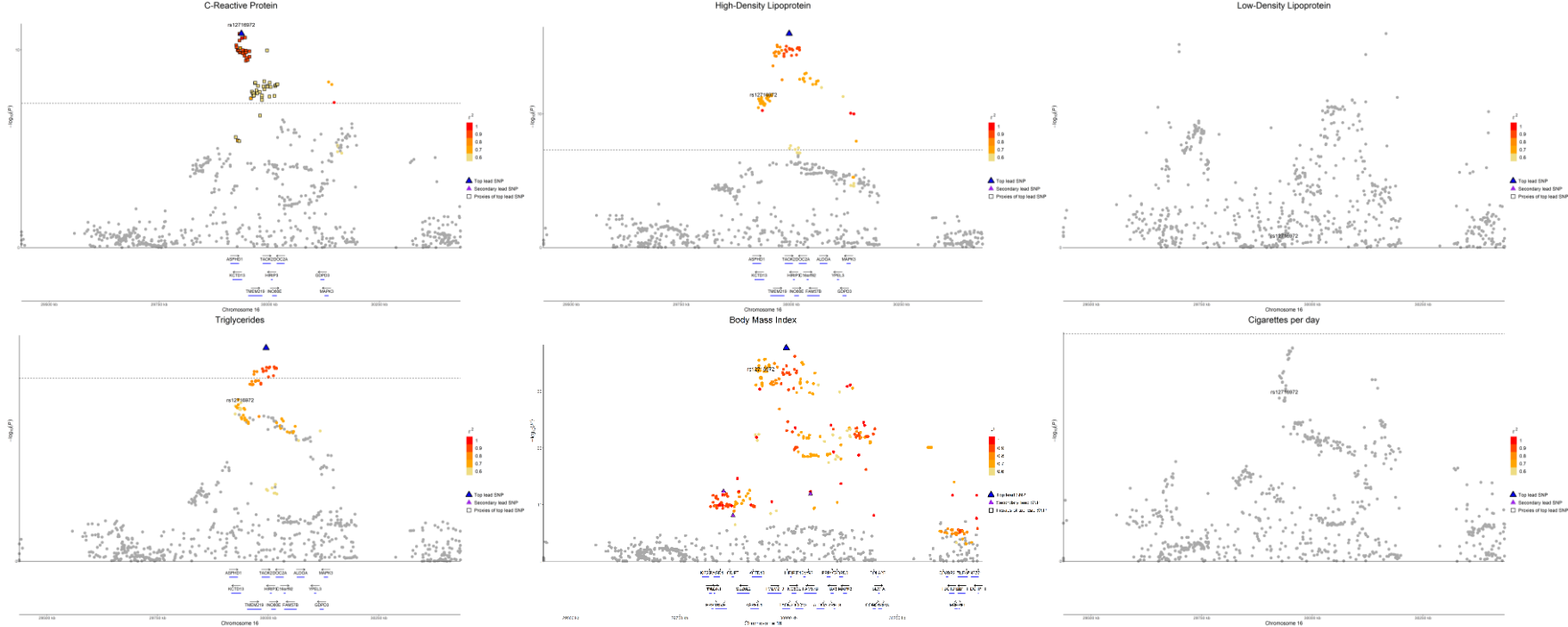
rs11852372



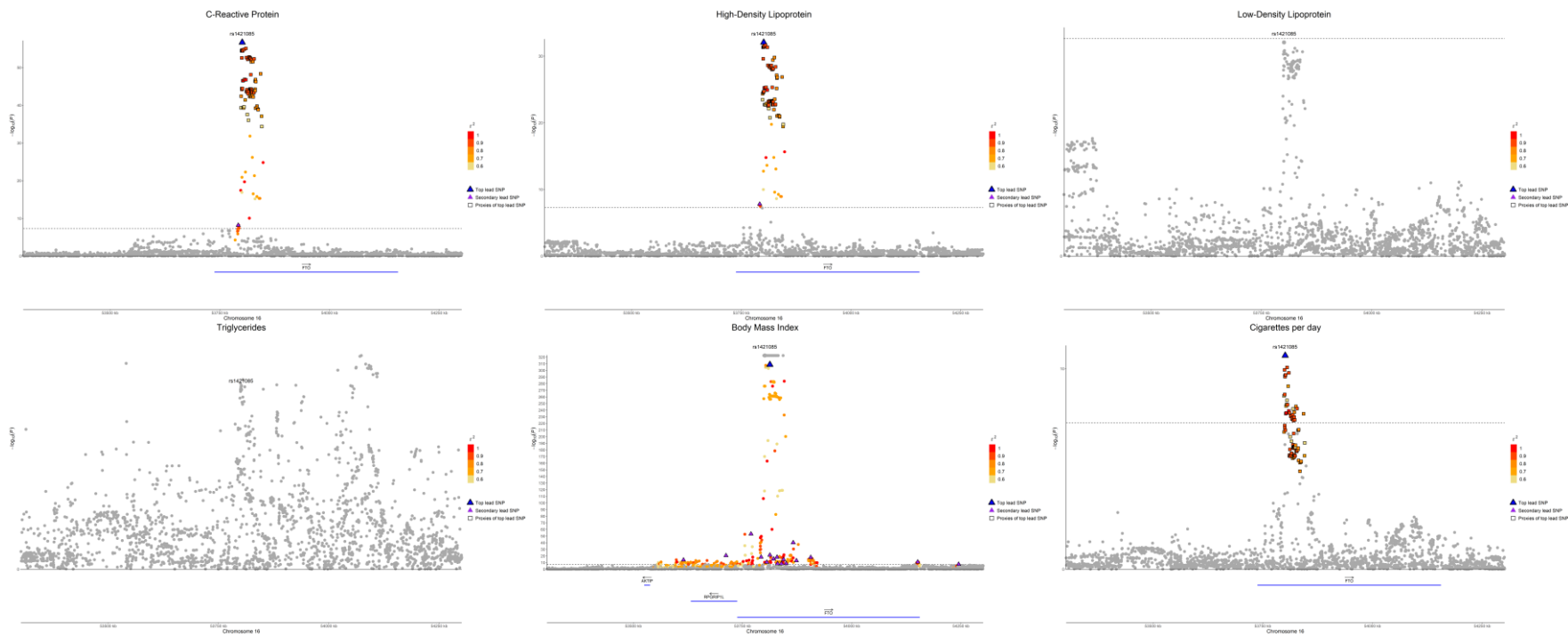
rs879620



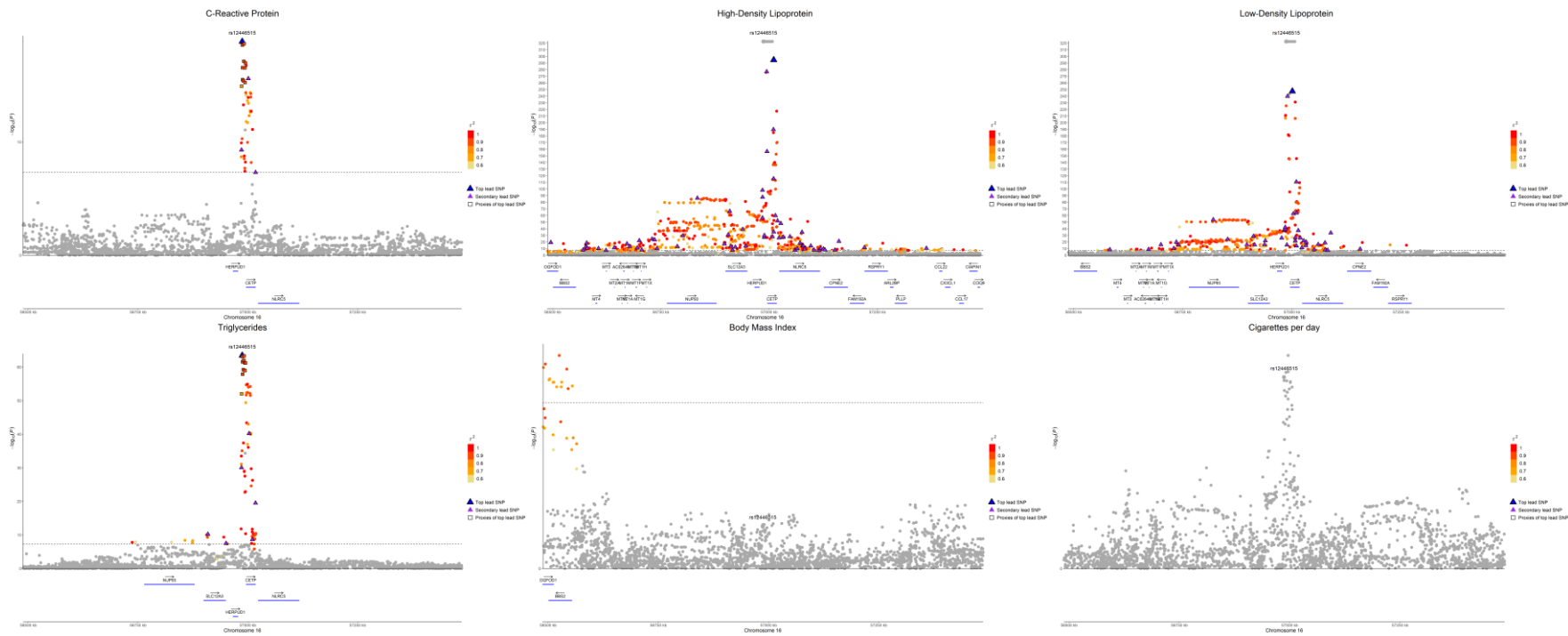
rs3814883



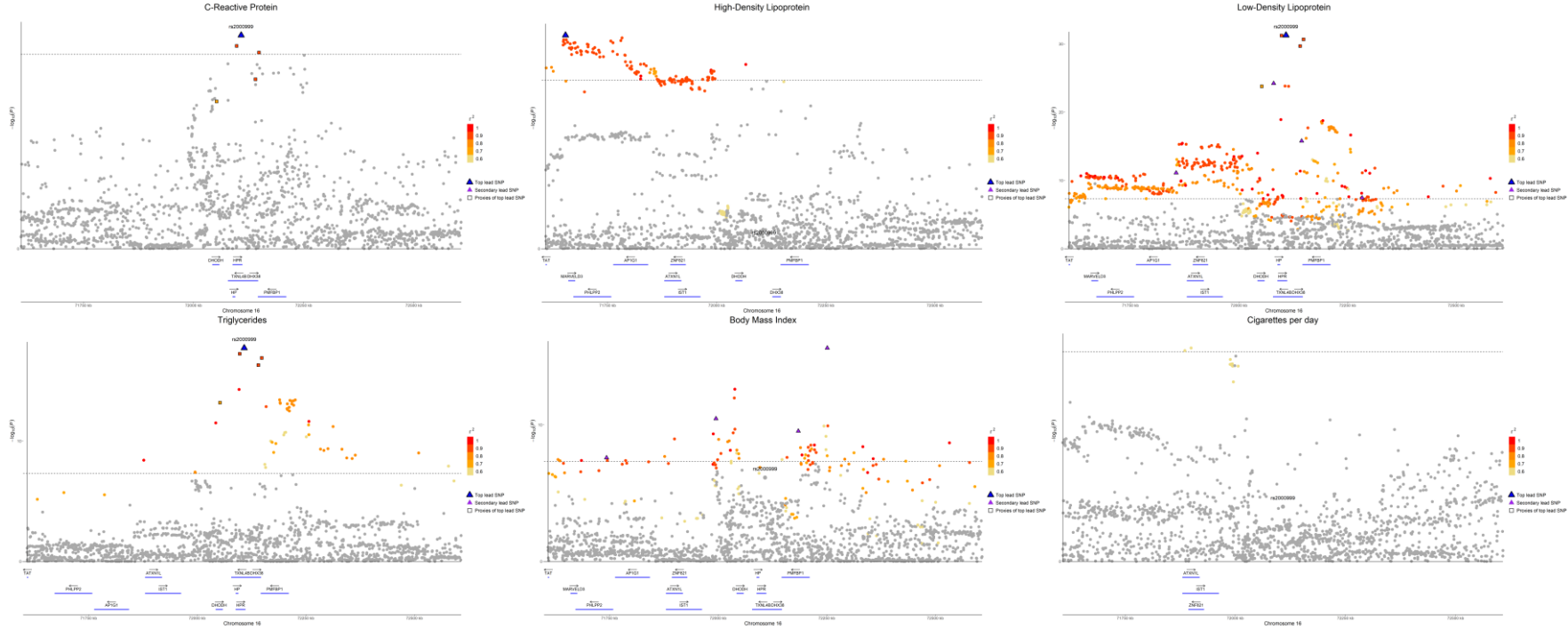
rs1421085



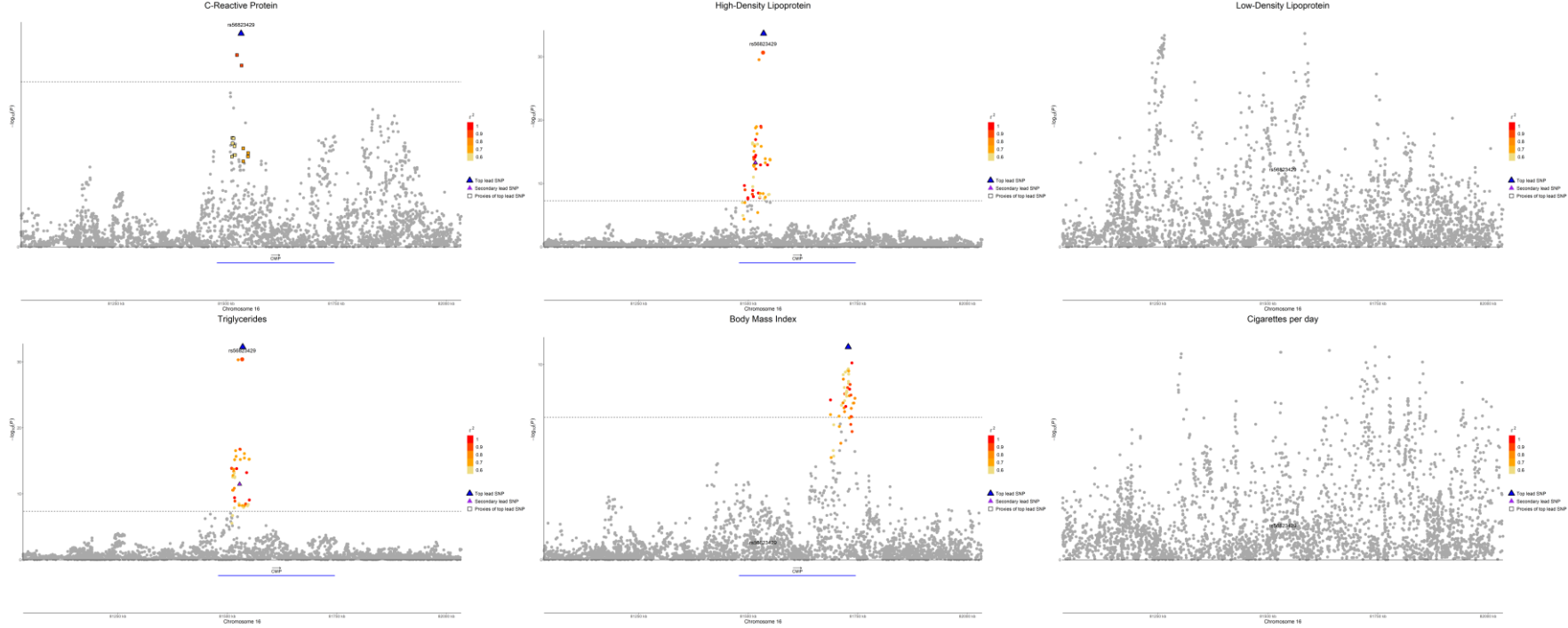
rs183130



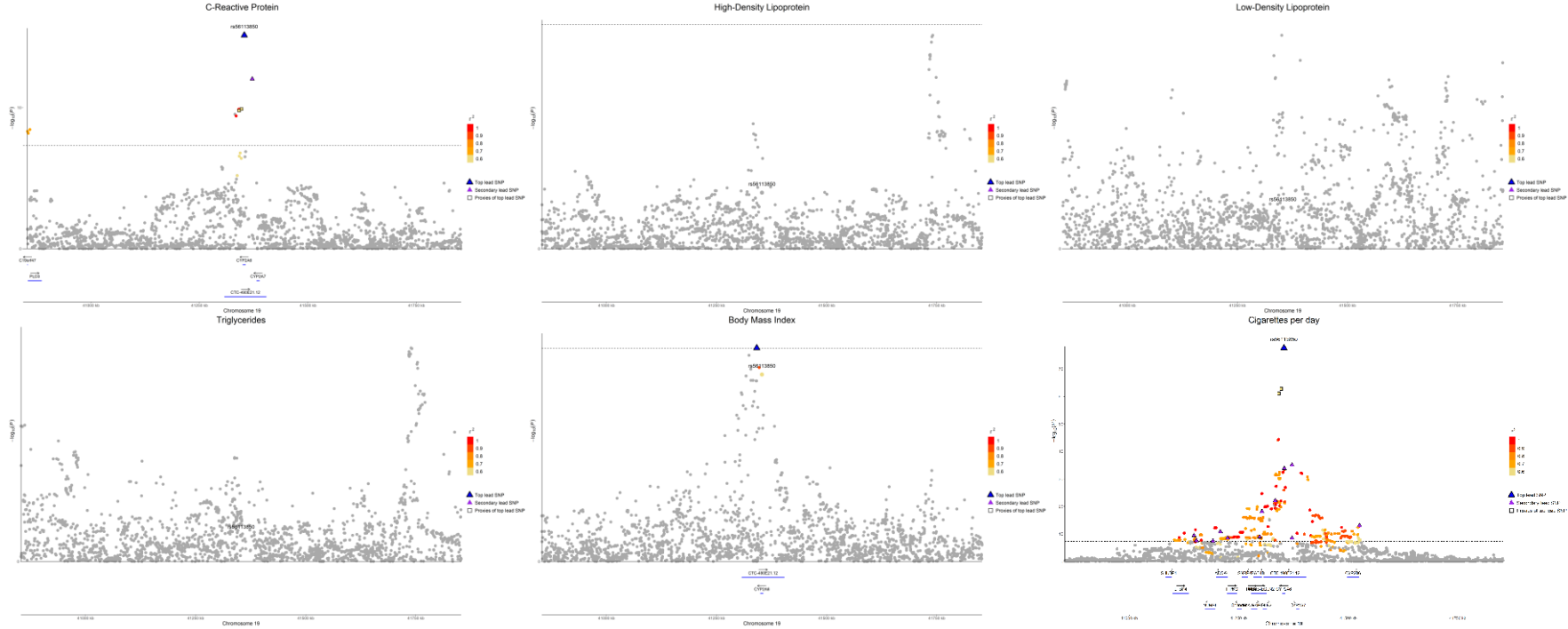
rs2000999



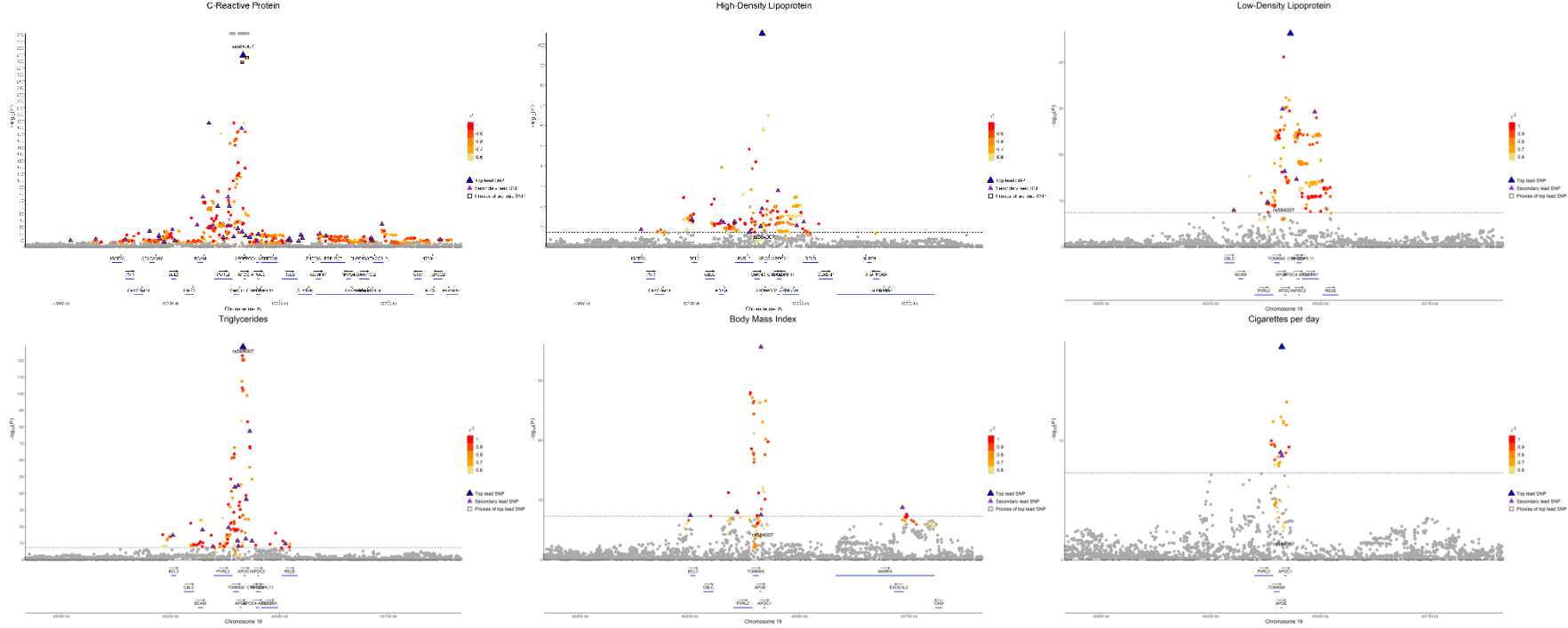
rs2925979



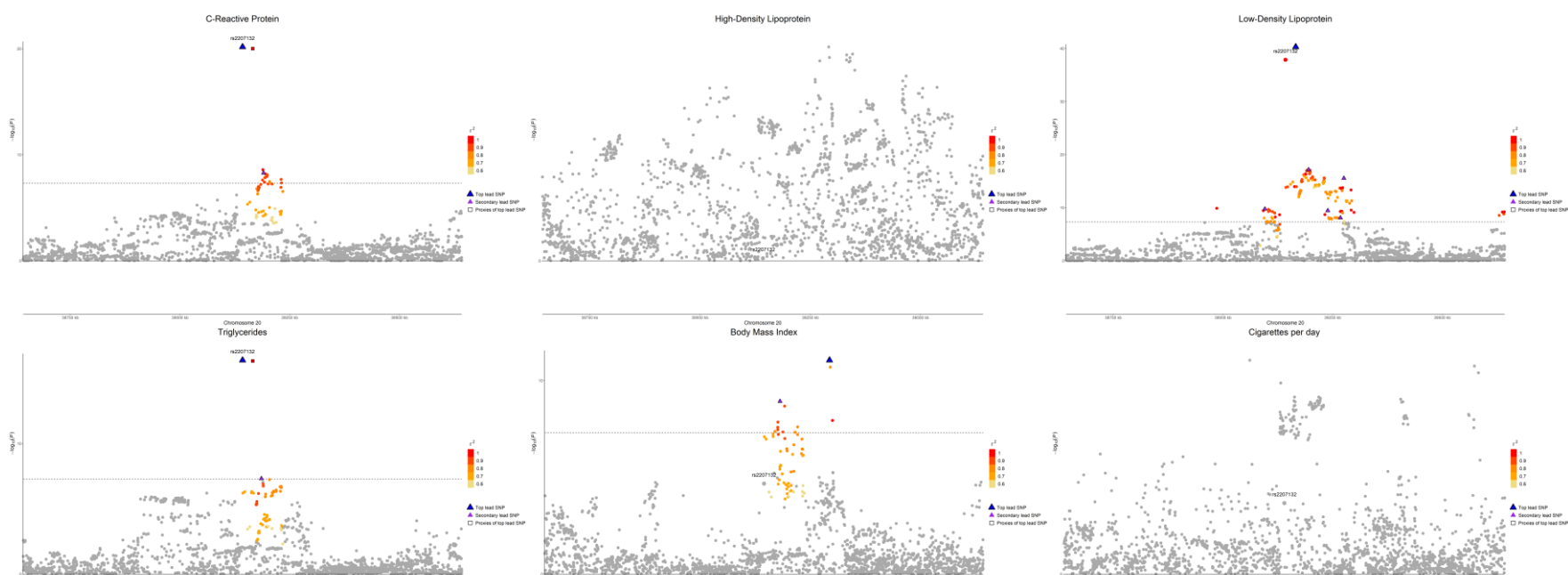
rs56113850



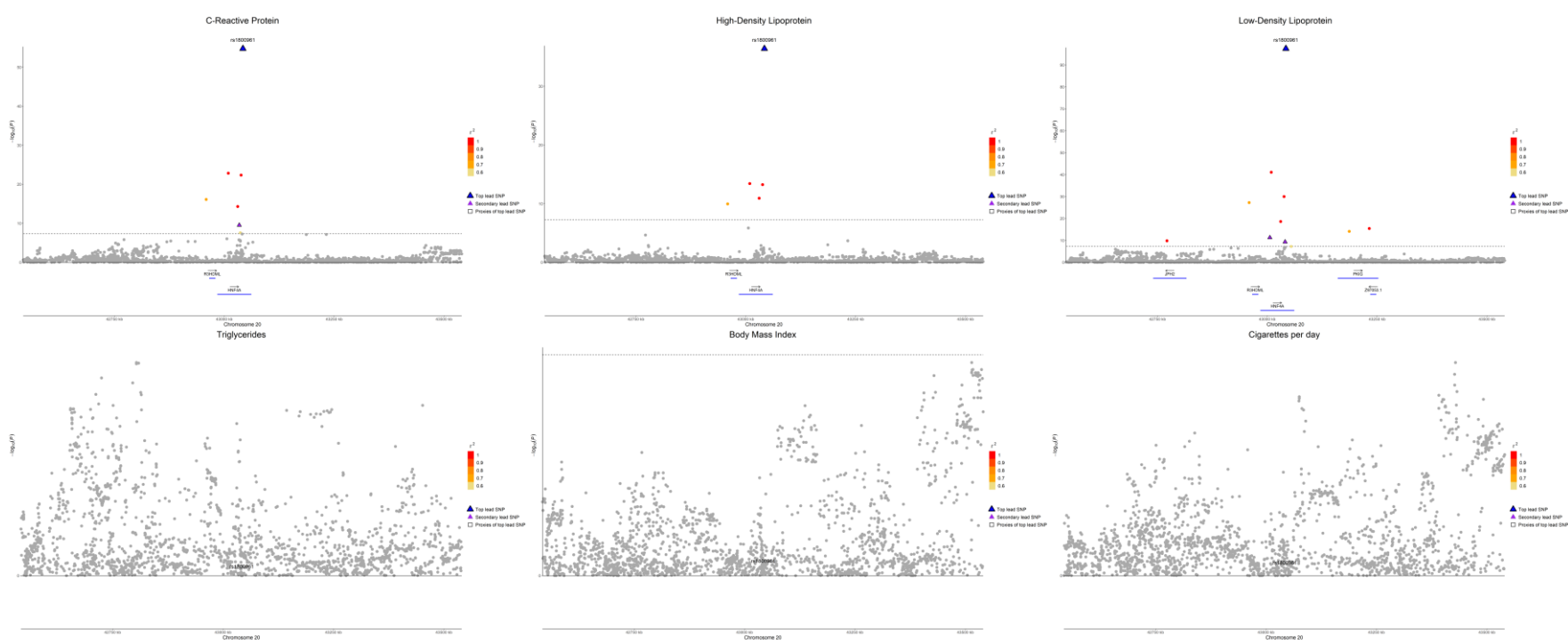
rs429358

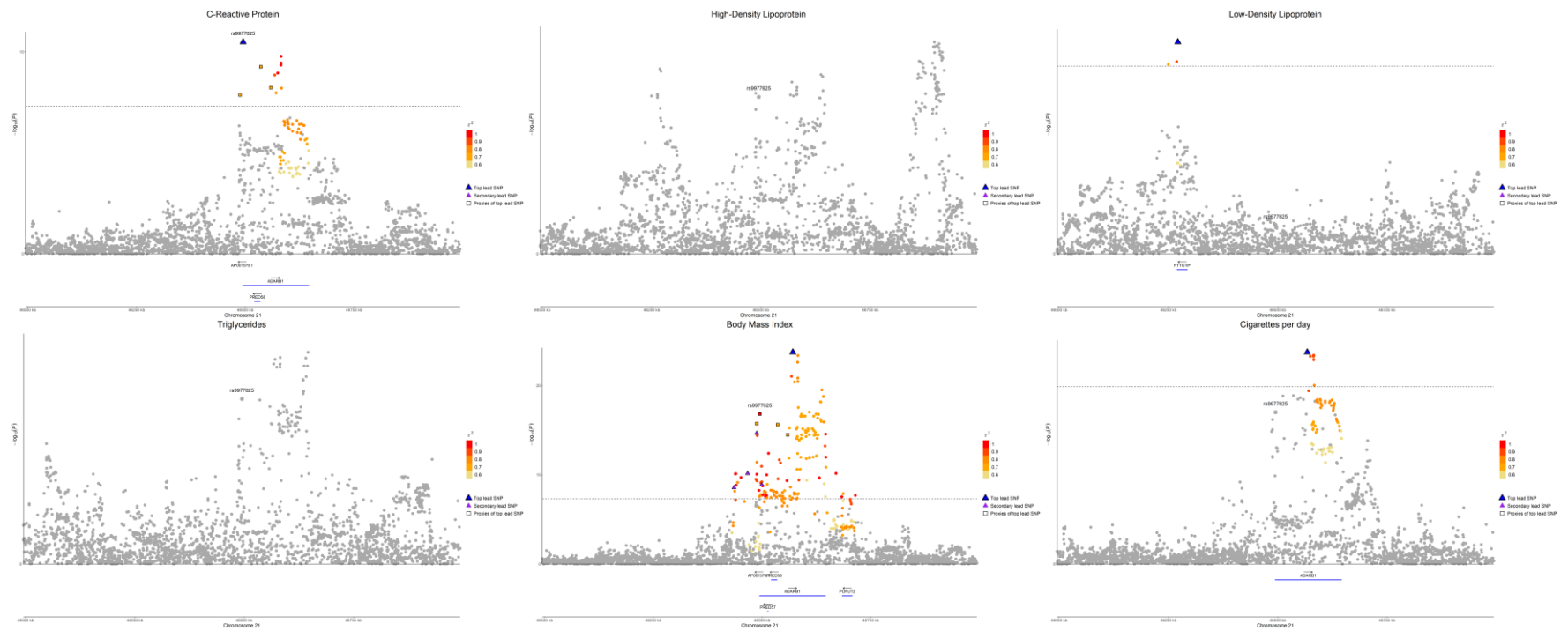


rs117113213



rs1800961





Supplementary Figure 7 Regional plots of the 41 loci found to colocalize between C-Reactive Protein levels (CRP) and any of the other examined traits: High-Density Lipoprotein (HDL), Low-Density Lipoprotein (LDL), Triglycerides (TG), Body Mass Index (BMI), and Cigarettes per day (CPD). The P-values come from two-sided statistical tests.