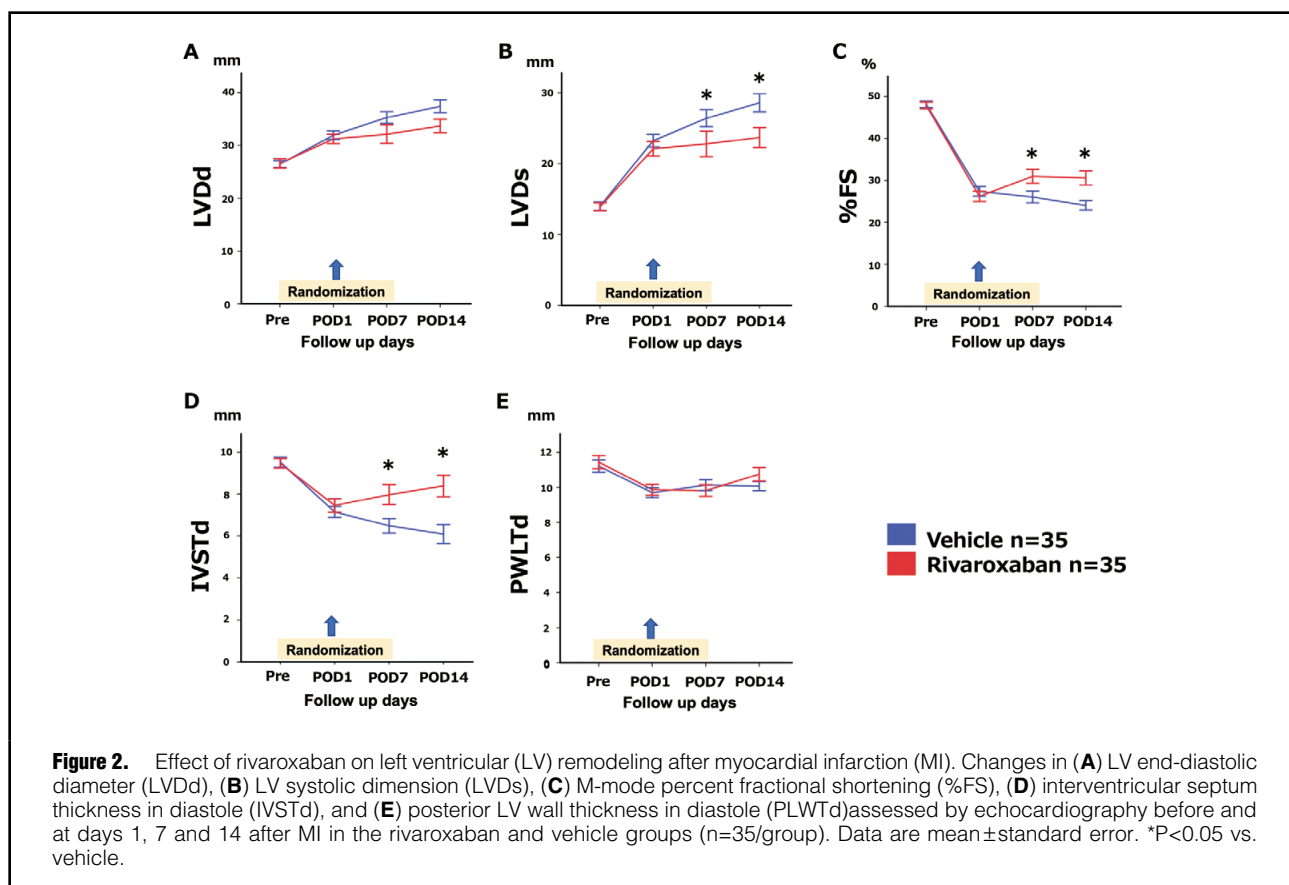


Cardioprotective Effects of Rivaroxaban on Cardiac Remodeling After Experimental Myocardial Infarction in Mice

Nobuhiro Nakanishi, MD; Koichi Kaikita, MD, PhD; Masanobu Ishii, MD, PhD;
Yu Oimatsu, MD, PhD; Tatsuro Mitsuse, MD; Miwa Ito, MD, PhD;
Kenshi Yamanaga, MD, PhD; Koichiro Fujisue, MD, PhD; Hisanori Kanazawa, MD, PhD;
Daisuke Sueta, MD, PhD; Seiji Takashio, MD, PhD; Yuichiro Arima, MD, PhD;
Satoshi Araki, MD, PhD; Taishi Nakamura, MD, PhD; Kenji Sakamoto, MD, PhD;
Satoru Suzuki, MD, PhD; Eiichiro Yamamoto, MD, PhD;
Hiroyuki Soejima, MD, PhD; Kenichi Tsujita, MD, PhD

The authors apologize for the written mistakes in the Result section; previous line graphs in Figure 2 showed mean \pm 2 standard error (SE). We corrected line graphs in Figure 2 with mean \pm SE. Corrections are shown below.

Page 159, Figure 2



Original article: *Circ Rep* 2020; 2: 158–166 doi:10.1253/circrep.CR-19-0117

Mailing address: Koichi Kaikita, MD, PhD, Department of Cardiovascular Medicine, Graduate School of Medical Sciences, Kumamoto University, 1-1-1 Honjo, Chuo-ku, Kumamoto 860-8556, Japan. E-mail: kaikitak@kumamoto-u.ac.jp

All rights are reserved to the Japanese Circulation Society. For permissions, please e-mail: cr@j-circ.or.jp

ISSN-2434-0790

