



Pelagic larval duration, growth rate, and population genetic structure of the tidepool snake moray *Uropterygius micropterus* around the southern Ryukyu Islands, Taiwan, and the central Philippines

Wen-Chien Huang^{1,2}, Jui-Tsung Chang³, Chun Liao³, Atsushi Tawa⁴, Yoshiyuki Iizuka⁵, Te-Yu Liao² and Jen-Chieh Shiao¹

¹Institute of Oceanography, National Taiwan University, Taipei, Taiwan

²Department of Oceanography, National Sun Yat-Sen University, Kaohsiung, Taiwan

³Institute of Bioinformatics and Structural Biology, National Tsing Hua University, Hsinchu, Taiwan

⁴National Research Institute of Far Seas Fisheries, Japan Fisheries Research and Education Agency, Ordo, Shimizu, Shizuoka, Japan

⁵Institute of Earth Sciences, Academia Sinica, Taipei, Taiwan

ABSTRACT

The relationships between pelagic larval duration (PLD) and geographic distribution patterns or population genetic structures of fishes remain obscure and highly variable among species. To further understand the early life history of the tidepool snake moray *Uropterygius micropterus* and the potential relationship between PLD and population genetic structure of this species, otolith microstructure and population genetics based on concatenated mtDNA sequence (cytochrome *b* and cytochrome oxidase subunit I, 1,336 bp) were analyzed for 195 specimens collected from eight locations around the southern Ryukyu Islands, Taiwan, and the central Philippines. Eels with longer PLD and lower otolith growth rates were observed at relatively higher latitudes with lower water temperatures (54.6 ± 7.7 days and $1.28 \pm 0.16 \mu\text{m day}^{-1}$ on Ishigaki Island, Japan, vs. 43.9 ± 4.9 days and $1.60 \pm 0.19 \mu\text{m day}^{-1}$ on Badian, the Philippines), suggesting that leptocephali grew faster and had shortened pelagic periods in warmer waters. Meanwhile, the eels along the southwest coast of Taiwan had relatively longer PLD (57.9 ± 10.5 days), which might be associated with the more complex ocean current systems compared to their counterparts collected along the east coast of Taiwan (52.6 ± 8.0 days). However, the southwestern and eastern Taiwan groups had similar otolith growth rates ($1.33 \pm 0.19 \mu\text{m day}^{-1}$ vs. $1.36 \pm 0.16 \mu\text{m day}^{-1}$). Despite the intergroup variation in PLD, genetic analysis revealed fluent gene flow among the tidepool snake morays in the study regions, implying that intraspecific PLD variation had a weak effect on genetic structure. The leptocephalus stage might have ensured the widespread gene flow among the study areas and leptocephalus growth was likely influenced by regional water temperature.

Submitted 23 February 2018

Accepted 19 April 2018

Published 9 May 2018

Corresponding authors

Te-Yu Liao, swp0117@gmail.com

Jen-Chieh Shiao, jcshiao@ntu.edu.tw

Academic editor

D. Ross Robertson

Additional Information and
Declarations can be found on
page 16

DOI 10.7717/peerj.4741

© Copyright
2018 Huang et al.

Distributed under
Creative Commons CC-BY 4.0

OPEN ACCESS

Subjects Aquaculture, Fisheries and Fish Science, Marine Biology, Population Biology

Keywords Muraenidae, Otolith microstructure, Pelagic larval duration, Population genetic structure

INTRODUCTION

The population structure of fishes with pelagic larvae is influenced by biological and environmental factors (Leis *et al.*, 2013; Nanninga *et al.*, 2014). However, many of these factors are difficult to parameterize (Nanninga *et al.*, 2014) and pelagic larval duration (PLD) is used as a direct predictor of dispersal potential and population connectivity, especially for site-attached coral reef fishes that do not display migratory behaviors during their juvenile and adult stages (Bowen *et al.*, 2006; Macpherson & Raventos, 2006). Although PLD has been found to strongly influence population genetic structure only in extreme cases with very short or very long PLD (Thresher, Colin & Bell, 1989; Bowen *et al.*, 2001; Weersing & Toonen, 2009), some studies have still suggested that PLD may be a strong determinant for evaluating larval dispersal and population connectivity (e.g., Faurby & Barber, 2012). Variation in PLD may be affected by numerous factors at inter- and intraspecific levels, including genotypes (Tsukamoto, Aoyama & Miller, 2002), physiological conditions of larvae (Reveillac *et al.*, 2008; Han *et al.*, 2010) and environmental changes (Searcy & Sponaugle, 2000; Sponaugle & Pinkard, 2004; Bergenius *et al.*, 2005). Therefore, larval fishes that experience different environmental conditions could have varied early life history traits, leading to specific PLDs among populations (Bay *et al.*, 2006). However, the effects of variable PLDs on population genetics remain unclear and infrequently evaluated for many fish.

Most true eels (Anguilliformes) are demersal fish with limited migration during the juvenile to adult stages (Bassett & Montgomery, 2011; Correia *et al.*, 2012), except for temperate anguillids and some congrid that have offshore spawning areas (Tsukamoto, 2006; Kurogi *et al.*, 2012). The long pelagic larval stage of leptocephalus may play an important role in their distribution and population genetic structures (Miller & McCleave, 2007; Kuroki *et al.*, 2009; Reece *et al.*, 2011). Moreover, variations in the intraspecific PLD of anguillids have been observed within and among geographic regions without genetic divergence. These variations in PLD are likely influenced by nutrition status among individuals (Reveillac *et al.*, 2008; Han *et al.*, 2010). Few studies have been conducted on intraspecific variation in PLDs in marine eels. Kimura *et al.* (2004) found various PLDs and growth rates for *Conger myriaster* leptocephali along the east coast of central Japan. Despite the various PLDs, *C. myriaster* breed in specific spawning areas (Kurogi *et al.*, 2012), which may counteract the influence of PLD variation on their genetic structure. For other marine eel taxa with near-shore spawning strategies, the correlations between variable PLD and genetic structure among geographic areas have yet to be explored thoroughly.

The family Muraenidae, known as moray eels, is the second largest family after the Ophichthidae in the Anguilliformes, with approximately 200 species in 15 genera and two subfamilies (Smith, 2012). Moray eels are broadly distributed in tropical and temperate oceans. Most muraenids inhabit rocky ledges and coral reefs from the intertidal zone to

depths of over 300 m, and some species are occasionally found in sandy or freshwater habitats (Tsukamoto et al., 2014). Moray eels have high fidelity to their habitats (Bassett & Montgomery, 2011) and spawn without migrations (Moyer & Zaiser, 1982). Therefore, moray eels are solely dispersed in the pelagic leptocephalus stage, providing an effective means of evaluating the effects of PLD on genetic divergence for marine eels with a local spawning strategy. For example, the tidepool snake moray *Uropterygius micropterus* (Bleeker, 1852) usually resides in the rocky intertidal zone at depths shallower than 3 m (Chen, 1997), leading to fragmented habitat use across the Indo–Pacific oceans from East Africa to Samoa, north to southern Japan, and south to Australia (Froese & Pauly, 2016). *Uropterygius micropterus* is a small species measuring less than 40 cm in length (Loh, Shao & Chen, 2011) that has a local spawning strategy. *U. micropterus* were observed to reproduce in the rocky intertidal zone of Taitung, Taiwan during summer. Numerous males followed and entwined with a female, snapping at the female's head and trunk. Afterward, a cloud of sperm and transparent, buoyant eggs were discharged into the water (HM Chen, 1994, unpublished data). Due to its small size, local spawning strategy, and specific habitat use, *U. micropterus* would be a favorable candidate for evaluating larval dispersal and its effects on genetic structure. The present study aimed to (1) examine the otolith microstructure of *U. micropterus* to evaluate variation in PLD among sampling sites and (2) to test the relationship of differences in PLD to genetic structure.

MATERIALS AND METHODS

Sample collection

One hundred and ninety-five juvenile and adult *U. micropterus* were collected by dip net and hand-lining at rocky intertidal zones along Ishigaki Island, Japan ($n = 14$), six Taiwanese sites ($n = 142$), and Badian, the Philippines ($n = 39$) during 2014–2016 (Table 1; Fig. 1). Shitiping ($n = 36$), Jihui ($n = 32$), and Green Island ($n = 20$) are located on the east coast of Taiwan and are influenced by the strong, constant Kuroshio Current that flows northward year-round. Checheng ($n = 31$), Wanlitong ($n = 11$), and Liuqiu ($n = 12$) are located on the southwest coast of Taiwan, in a more complex ocean environment that is affected by numerous water masses on a seasonal basis (Shaw, 1991; Farris & Wimbush, 1996; Hu et al., 2010). Ishigaki is also affected by the Kuroshio Current, and Badian is a relatively closed environment located on Cebu in the central Philippines.

Otolith preparation and analysis

Left sagittal otoliths were extracted under stereo microscope, cleaned with deionized water, dried at 55 °C overnight, embedded in Epofix resin, and fixed on microscope slides. The prepared otoliths were grounded along the sagittal plane with 2000 and 2400 grit sandpapers until the core was revealed on the surface, and then polished until smooth with 0.05 μm alumina powder. The ground otoliths were photographed and the growth increments were counted under a compound light microscope (BX-51; Olympus, Tokyo, Japan) from the first feeding check (FFC) to the growth check (GC) (Fig. 2). The otolith growth increments during the leptocephalus stage of *U. micropterus* were distinguishable and the narrowest rings (approx. 1 μm) were larger than the resolution limitation of the

Table 1 Summary of collection data and sample size for the otoliths and mtDNA analysis of *U. micropterus* used in this study. The number of alleles, variable sites (S), haplotype diversity (h), and nucleotide diversity (π).

Country	Location	Code	N	N	N	No.	S	h	π
				otolith	mtDNA	alleles			
Japan	Ishigaki	IG	14	14	14	14	44	1.0000	0.0063
Taiwan	Shitiping	ST	36	36	36	31	74	0.9921	0.0060
	Jihui	JH	32	31	32	31	88	0.9980	0.0073
	Green Island	GI	20	20	10	10	35	1.0000	0.0067
	Checheng	CC	31	31	31	30	73	0.9979	0.0061
	Wanlitong	KT	11	11	11	11	42	1.0000	0.0062
	Liuqiu	LQ	12	12	12	12	32	1.0000	0.0069
	Taiwan total		142	141	132	99	157	0.9940	0.0066
Philippines	Badian	BD	39	39	39	37	85	0.9973	0.0064
		All specimens	195	194	185	132	179	0.9938	0.0065

compound light microscope. The GC was defined by [Ling, Iizuka & Tzeng \(2005\)](#) as the prominent check at which the growth increments change from a circular to a radiating pattern, accompanied by a lowered Sr/Ca ratio. This prominent check has been assumed to be associated with the beginning of metamorphosis in leptocephalus and has been used in several studies of marine eel species ([Ling, Iizuka & Tzeng, 2005](#); [Lee et al., 2008](#)). Otolith growth increments from the first feeding ring to the GC were expressed as T_{GC} (i.e., PLD). Meanwhile, the radius of GC was measured along the longest axis and divided by T_{GC} to calculate the mean otolith growth rate ($\mu\text{m increment}^{-1}$, as G_{GC}). Some sub-increments between the wide increments before GC may be ignored, and the blurred rings before FFC were excluded from the count, which may have led to a slight underestimation of the actual number of increments. Fourteen otoliths were randomly chosen for the Sr/Ca ratio analysis to assist in the judgment of GC. Polished otoliths were coated with a layer of carbon and analyzed by an electron probe microanalyzer (EPMA, JXA-8900R; JEOL, Peabody, MA, USA). The Sr/Ca ratios were measured from the core to the edge of each otolith under electron beam conditions of 15 kV and 3 nA, beam size $5 \times 4 \mu\text{m}$, and 10 μm of spot intervals. Since the otolith growth increments of anguillid species are typically deposited daily in the early leptocephalus and glass eel stages ([Sugeha et al., 2001](#); [Shinoda et al., 2004](#)), the otolith increments counted in this study were assumed to be deposited daily (i.e., $T_{GC} = \text{days}$ and $G_{GC} = \mu\text{m day}^{-1}$).

The daily ages and otolith growth rates of *U. micropterus* at different latitudes were divided into three groups (Ishigaki, Taiwan, and Badian) for statistical analysis. The Taiwanese sampling sites were additionally divided into eastern and southwestern groups, representing different oceanic current conditions at similar latitudes, to test whether ocean currents affected the early life characteristics of *U. micropterus* despite the small geographic scale. The statistical differences in daily ages and mean daily otolith growth rates between groups were tested by analysis of variance (ANOVA) and the post hoc Tukey HSD test in R ([R Development Core Team, 2013](#)). The mean increment widths of sagittal otoliths for intervals of every three rings were also estimated in ImageJ ([Abràmoff, Magalhães & Ram, 2004](#)).

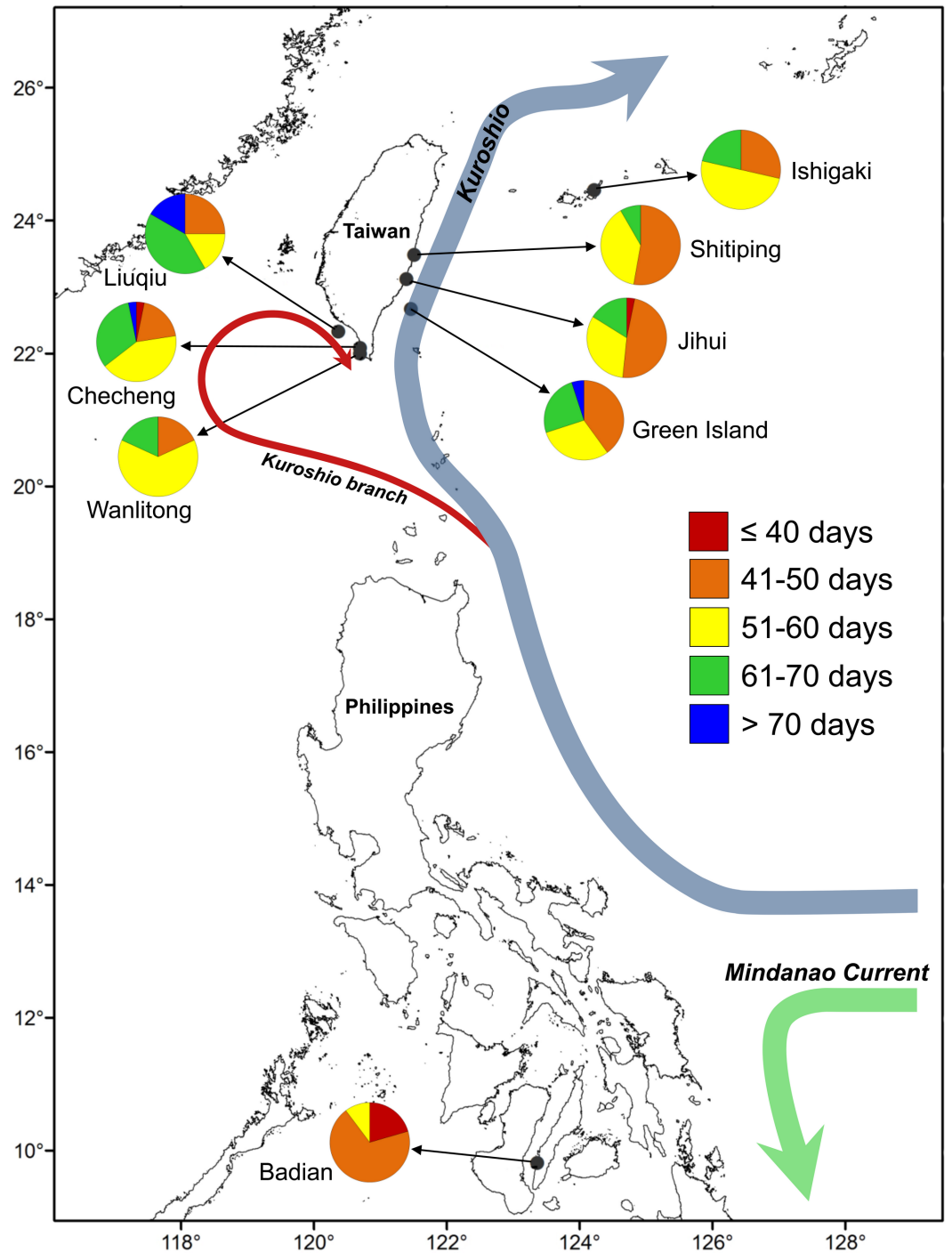


Figure 1 Map of sampling sites for *U. micropterus*. Within the pie charts, colors indicate the percentages of pelagic larval duration (PLD) for each sampling site.

Full-size  DOI: [10.7717/peerj.4741/fig-1](https://doi.org/10.7717/peerj.4741/fig-1)

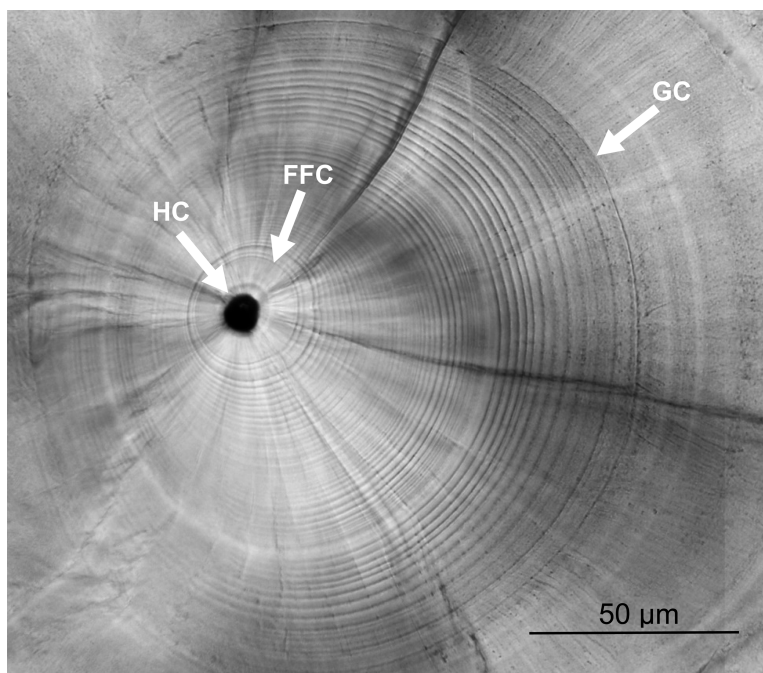


Figure 2 Otolith microstructure. Otolith microstructure showing the hatch check (HC), first feeding check (FFC), and growth check (GC).

Full-size  DOI: [10.7717/peerj.4741/fig-2](https://doi.org/10.7717/peerj.4741/fig-2)

along the longest axis. The percentages of daily ages for five-day intervals are shown in bar charts.

Population genetic analysis

DNA was extracted from muscle tissue using a Qiagen DNA extraction kit (Qiagen, Hilden, Germany) following the manufacturer's protocols. Polymerase chain reactions (PCRs) were run in a total volume of 50 μL , including 6 μL of TaKaRa (<http://www.clontech.com>) 10 \times buffer, 4 μL of 2.5 mM dNTPs, 4 μL of 10 μm of each primer, 0.25 μL of TaKaRa *Ex Taq* DNA polymerase, 6 μL of template DNA at 50 ng/ μL , and 25.75 μL of deionized water. The fragments of cytochrome *b* (*cyt b*) 680-bp and cytochrome oxidase subunit I (*COI*) 656-bp were respectively amplified using the primers *cyt b*: L14725 (5'-GTG ACT TGA AAA ACC ACC GTT G-3') (Song, Near & Page, 1998) and H15573 (5'-AAT AGG AAG TAT CAT TCG GGT TTG ATG-3') (Taberlet, Meyer & Bouvet, 1992); and *COI*: FishF2 (5'-TCG ACT AAT CAT AAA GAT ATC GGC AC-3') and FishR2 (5'-ACT TCA GGG TGA CCG AAG AAT CAG AA-3') (Ward et al., 2005). The annealing temperatures of *cyt b* and *COI* were 47 $^{\circ}\text{C}$ and 50 $^{\circ}\text{C}$, respectively. The thermal profiles of PCR were 94 $^{\circ}\text{C}$ for 5 min, followed by 37 cycles of 94 $^{\circ}\text{C}$ for 1 min, annealing temperature for 45 s, and 72 $^{\circ}\text{C}$ for 1 min, with a final extension at 72 $^{\circ}\text{C}$ for 10 min. The quality of PCR products was checked by electrophoresis with 1.5% agarose gel and then purified using a Macherey-Nagel purification kit (<http://www.mn-net.com>) according to the manufacturer's protocols. DNA sequences were generated by an ABI 3730 automated

sequencer at the Center for Biotechnology, National Taiwan University. Sequences were assembled and edited manually and aligned using MEGA version 6.0 (Tamura et al., 2013).

Sequences of *cyt b* and *COI* were concatenated as a single genetic marker and the analyses that followed were based on this data set. The genetic diversity indexes of haplotype diversity (h) and nucleotide diversity (π) were calculated in DnaSP version 5.0 (Librado & Rozas, 2009) according to Nei (1987). Pairwise Φ_{ST} comparisons among sampling sites and among groups with different classes of T_{GC} were estimated in Arlequin version 3.5 (Excoffier & Lischer, 2010), and 10,000 permutations were used to estimate the departure from the null hypothesis of genetic homogeneity. The statistical significance of pairwise Φ_{ST} values was adjusted with Bonferroni correction (Rice, 1989) for multiple comparisons. The hierarchical levels of genetic diversity were tested through analysis of molecular variance (AMOVA; Excoffier, Smouse & Quattro, 1992), and the proportions of variations among groups (Φ_{CT}), among populations within groups (Φ_{SC}), and within populations (Φ_{ST}) were calculated in Arlequin; 10,000 permutations were used to estimate statistical significance. Two hypothetical grouping treatments were used for AMOVA: (1) based on the three different latitudinal groups of Ishigaki, Taiwan, and Badian; and (2) based on the sampling sites that were associated with three different ocean current conditions, namely the Kuroshio Current system (Ishigaki, Shitiping, Jihui, and Green Island), mixed effect by numerous water masses (Checheng, Wanlitong, and Liuqiu), and the interior current systems of the Philippine archipelago (Badian). The minimum spanning network (MSN) of haplotypes was built using Arlequin version 3.5 and HapStar version 0.7 (Teacher & Griffiths, 2011) to connect haplotypes based on the minimum differences between sequences.

RESULTS

Otolith microstructure and microchemistry

The otolith microstructure of *U. micropterus* was similar to those of other marine eels (Correia et al., 2004; Ling, Iizuka & Tzeng, 2005; Lee et al., 2008). After polishing, the otolith core became a hole surrounded by a thick ring, referred to as a hatch check (HC; Fig. 2). The first feeding check (FFC) was assumed to form when yolks were absorbed completely and the leptocephali began to ingest external food. There were three to five blurry increments between HC and FFC in some individuals. The increments beyond FFC were circular, and the increment widths gradually increased to a peak of 1.1–2.0 μm at approximately the 10th to 20th increments, followed by a gradual decrease to a minimum of 0.5–0.9 μm . Then, the growth increment width abruptly increased to 1.5–4.0 μm by three to 28 increments and formed a profound growth check (GC). The growth increments after GC were wider (5–15 μm), diffused, and radiative. The Sr/Ca ratios of 14 *U. micropterus* fluctuated between 3 and 16×10^{-3} from the core to the GC, with no apparent pattern. The Sr/Ca ratios then dropped rapidly, accompanied by the appearance of the GC in all but one individual (Fig. 3).

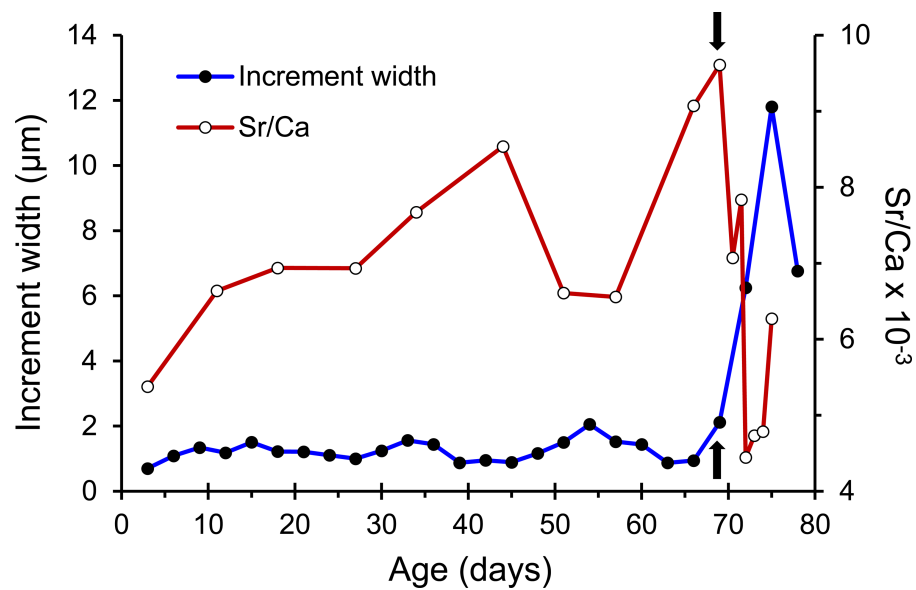


Figure 3 Patterns of otolith increment widths and Sr/Ca ratios from a Jihui specimen. Arrows represent the position of the growth check (GC).

Full-size DOI: [10.7717/peerj.4741/fig-3](https://doi.org/10.7717/peerj.4741/fig-3)

Genetic data

One hundred and thirty-two haplotypes from 1,336 bp concatenated mtDNA sequences from 195 *U. micropterus* were identified (GenBank accession number [MF190188–MF190364](#)). In total, 179 polymorphic sites, 112 parsimony informative sites, and 67 singleton variable sites were found. Haplotype diversity (h) and nucleotide diversity (π) ranged from 0.9921 to 1 (average = 0.9938) and 0.0060 to 0.0073 (average = 0.0065), respectively ([Table 1](#)). The minimum spanning network showed many unique haplotypes, with only 28 of the 132 haplotypes shared by more than one individual. These unique haplotypes were connected to the center haplotype that occurred in Ishigaki, Shitiping, Checheng, and Badian. The most common haplotype consisted of seven individuals from all locations except Liuqiu and Wanlitong. Closely related haplotypes consisted of individuals from distinct regions, revealing no obvious geographic pattern ([Fig. 4](#)).

The pairwise Φ_{ST} values among sampling sites ranged from -0.025 to 0.121 . Liuqiu revealed low but significant genetic variations with all sampling sites except Green Island. Only Liuqiu versus Checheng was statistically significant after the most conservative Bonferroni correction ([Table 2](#)). All pairwise Φ_{ST} values among groups with different classes of T_{GC} remained low and insignificant ([Table S1](#)). The AMOVA results showed that over 99% of variations occurred at the population level under both groupings. Only the Φ_{SC} of different ocean current conditions revealed low but statistically significant structure ($\Phi_{SC} = 0.017$, $P < 0.05$) ([Table 3](#)). The results of genetic analysis support the conclusion that *U. micropterus* in the study areas should be considered genetically homogeneous with weak genetic structure.

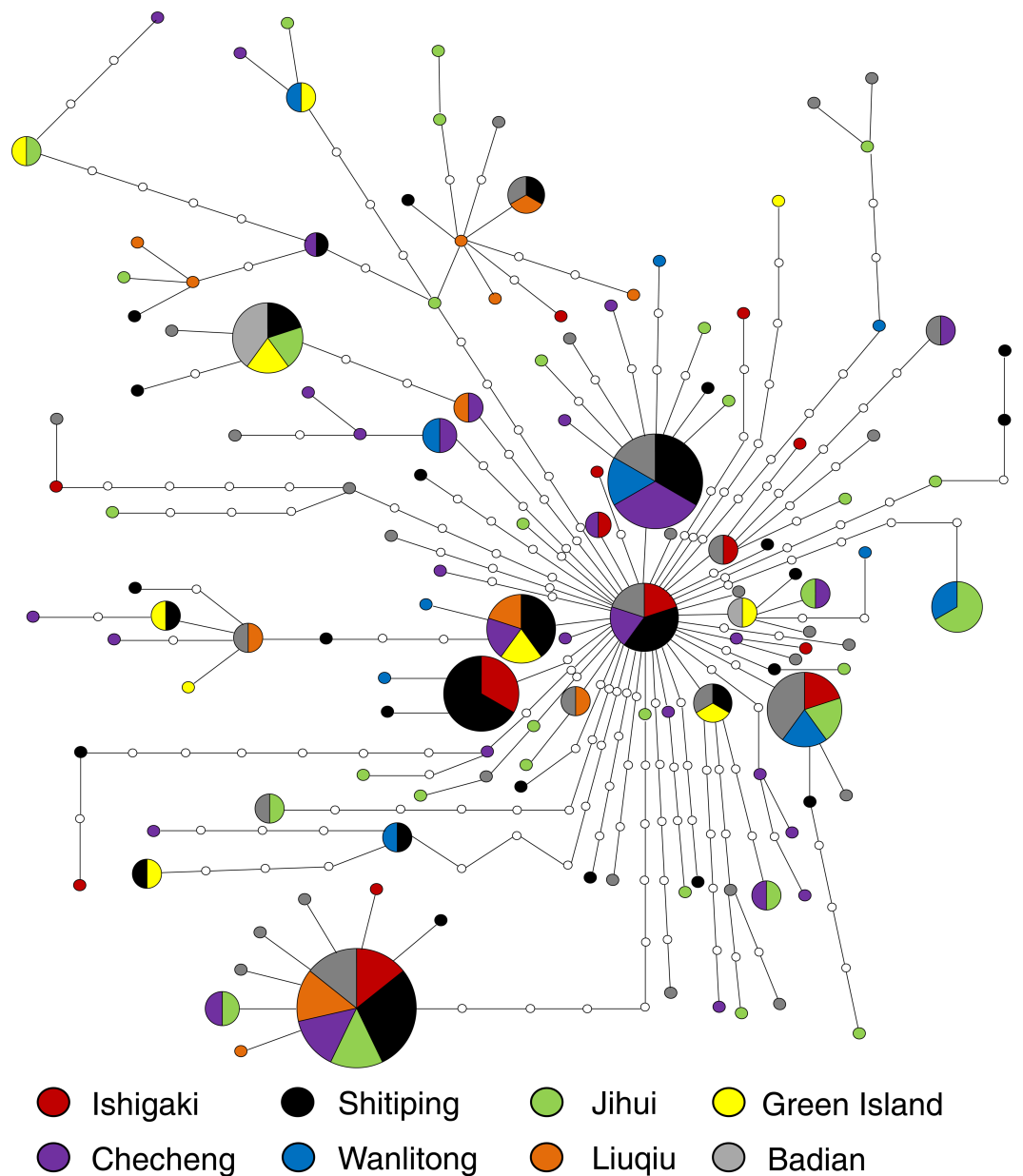


Figure 4 Minimum spanning network built from 185 concatenated mtDNA sequence (1,336 bp) of *U. micropterus* with 132 haplotypes. Colors represent correspondent sampling sites; the size of each pie chart is proportional to the number of individuals; hollow circles are haplotypes that were not collected in this study.

Full-size DOI: [10.7717/peerj.4741/fig-4](https://doi.org/10.7717/peerj.4741/fig-4)

Pelagic larval duration and growth rate

The pelagic larval duration represented by the T_{GC} ranged from 33 to 98 days for the eels examined (Table 4). The maximum T_{GC} of 98 days occurred in Liuqiu and the minimum of 33 days occurred in Badian. Liuqiu specimens had the longest and most variable T_{GC} . Ishigaki and Taiwanese specimens had significantly longer T_{GC} than those from Badian

Table 2 Pairwise Φ_{ST} values between locations analyzed from the concatenated mtDNA sequence (1,336 bp).

	Japan	Taiwan						Philippines
	IG	ST	JH	GI	CC	KT	LQ	BD
IG								
ST	-0.015							
JH	-0.014	-0.006						
GI	0.010	-0.014	-0.016					
CC	-0.009	-0.004	-0.004	-0.005				
KT	-0.009	-0.011	-0.016	-0.009	-0.020			
LQ	0.089*	0.090**	0.044*	0.065	0.116***	0.121**		
BD	-0.025	-0.002	-0.002	0.005	-0.003	-0.004	0.102**	

Notes.

IG, Ishigaki; ST, Shitiping; JH, Jihui; GI, Green Island; CC, Checheng; KT, Wanlitong; LQ, Liuqiu; BD, Badian.

* $P < 0.05$.** $P < 0.01$.*** $P < 0.001$.

Bold, significant after Bonferroni correction.

Table 3 AMOVA results for the concatenated mtDNA sequence (1,336 bp) based on two hypothetical groupings.

Source of variations	Degree of freedom	Sum of squares	% of variation	Fixation index
Three different latitudinal groups: Ishigaki (IG) vs. Taiwan (ST, JH, GI, CC, KT, LQ) vs. Badian (BD)				
Among groups	2	8.4	-0.97	-0.010 (Φ_{CT})
Among populations within groups	5	28.3	1.35	0.013 (Φ_{SC})
Within populations	177	781.3	99.61	0.004 (Φ_{ST})
Three different ocean current conditions: (IG, ST, JH, GI) vs. (CC, KT, LQ) vs. (BD)				
Among groups	2	7.7	-1.12	-0.011 (Φ_{CT})
Among populations within groups	5	29.1	1.67	0.017* (Φ_{SC})
Within populations	177	781.3	99.45	0.006 (Φ_{ST})

Notes.

IG, Ishigaki; ST, Shitiping; JH, Jihui; GI, Green Island; CC, Checheng; KT, Wanlitong; LQ, Liuqiu; BD, Badian.

* $P < 0.05$.

(Tukey HSD, $P < 0.01$). The otolith growth rate from the first feeding ring to the GC represented by G_{GC} ranged from 0.91 to 2.40 $\mu\text{m day}^{-1}$. The maximum G_{GC} of 2.40 $\mu\text{m day}^{-1}$ occurred in Badian and the minimum value of 0.91 $\mu\text{m day}^{-1}$ occurred in Jihui. Significantly lower G_{GC} were observed in Ishigaki and Taiwanese specimens compared with Badian (Tukey HSD, $P < 0.01$).

The eels were divided into three latitudinal groups according to sampling site, namely Ishigaki ($n = 14$), Taiwan (Shitiping, Jihui, Green Island, Checheng, Wanlitong, and Liuqiu; $n = 141$) and Badian ($n = 39$). The respective mean \pm SD daily age and otolith growth rate were 54.6 ± 7.7 days with $1.28 \pm 0.16 \mu\text{m day}^{-1}$, 54.6 ± 9.3 days with $1.35 \pm 0.18 \mu\text{m day}^{-1}$, and 43.9 ± 4.9 days with $1.60 \pm 0.19 \mu\text{m day}^{-1}$. Ishigaki specimens had the lowest growth rate, whereas the Badian specimens had the highest growth rate and shortest mean T_{GC} (Table 5, Figs. 5A & 6). There were no significant differences in T_{GC} and G_{GC} between the Ishigaki and Taiwanese specimens (Tukey HSD, $P > 0.05$), and both were significantly

Table 4 Detailed data on ranges, means, and statistical analyses of otolith growth rates and increments for all locations used in this study.

Otolith increments calculated from first feeding check (FFC) to growth check (GC) are represented as T_{GC} , and otolith growth rate is represented as G_{GC} .

		Ishigaki	Taiwan						Badian
		IG	ST	JH	GI	CC	KT	LQ	BD
T_{GC}	Range	41–68	42–69	39–69	44–74	40–85	41–66	46–98	33–56
(days)	Mean ^{***}	54.6 ± 7.7 ^{ab}	51.8 ± 7.2 ^b	51.7 ± 7.9 ^b	55.2 ± 9.1 ^{ab}	57.6 ± 9.7 ^{ab}	55.2 ± 6.9 ^{ab}	61.2 ± 14.6 ^a	43.9 ± 4.9 ^c
G_{GC}	Range	1.04–1.55	0.95–1.58	0.91–1.87	0.99–1.66	0.93–1.73	1.16–1.57	0.98–1.79	1.22–2.40
($\mu\text{m day}^{-1}$)	Mean ^{***}	1.28 ± 0.16 ^a	1.36 ± 0.14 ^a	1.39 ± 0.17 ^a	1.32 ± 0.18 ^a	1.31 ± 0.21 ^a	1.33 ± 0.11 ^a	1.38 ± 0.22 ^a	1.60 ± 0.19 ^b
	N	14	36	31	20	31	11	12	39

Notes.

IG, Ishigaki; ST, Shitiping; JH, Jihui; GI, Green Island; CC, Checheng; KT, Wanlitong; LQ, Liuqiu; BD, Badian.

^{***} $P < 0.001$ (ANOVA test).

Numbers with the same superscript letters (i.e., a, b, ab) are not significantly different (Tukey HSD test, $P \geq 0.05$).

Table 5 Otolith increments and growth rates from first feeding check (FFC) to growth check (GC) based on three latitudinal groups.

		Ishigaki	Taiwan	Badian
		IG	ST, JH, GI, CC, KT, LQ	BD
T_{GC}	Range	41–68	39–98	33–56
(days)	Mean ^{***}	54.6 ± 7.7 ^a	54.6 ± 9.3 ^a	43.9 ± 4.9 ^b
G_{GC}	Range	1.04–1.55	0.91–1.87	1.22–2.40
($\mu\text{m day}^{-1}$)	Mean ^{***}	1.28 ± 0.16 ^a	1.35 ± 0.18 ^a	1.60 ± 0.19 ^b
	N	14	141	39

Notes.

IG, Ishigaki; ST, Shitiping; JH, Jihui; GI, Green Island; CC, Checheng; KT, Wanlitong; LQ, Liuqiu; BD, Badian.

^{***} $P < 0.001$ (ANOVA test).

Numbers with the same superscript letters (i.e., a, b) are not significantly different (Tukey HSD test, $P \geq 0.05$).

different from the Badian specimens (Tukey HSD, $P < 0.001$). The percentage of T_{GC} peaked at 56–60 days (29%) in the Ishigaki specimens, 46–50 days (24%) in the Taiwanese specimens, and 41–45 days (44%) in the Badian specimens (Fig. 5A). *U. micropterus* tended to have longer T_{GC} and lower G_{GC} at higher latitudes.

The Taiwanese specimens were further divided into eastern (Shitiping, Jihui, and Green Island; $n = 87$) and southwestern groups (Checheng, Wanlitong, and Liuqiu; $n = 54$), which had mean ± SD days and otolith growth rates of 52.6 ± 8.0 days ($1.36 \pm 0.16 \mu\text{m day}^{-1}$) and 57.9 ± 10.5 days ($1.33 \pm 0.19 \mu\text{m day}^{-1}$), respectively. The specimens collected in southwestern Taiwan had significantly longer T_{GC} than those collected in eastern Taiwan (Tukey HSD, $P < 0.01$), whereas there was no significant difference in G_{GC} (Tukey HSD, $P > 0.05$) (Table 6). The percentage of T_{GC} peaked at 46–50 days (30%) for the eastern Taiwan group and 51–55 days (22%) for the southwestern Taiwan group (Fig. 5B). *U. micropterus* from southwestern Taiwan had longer T_{GC} .

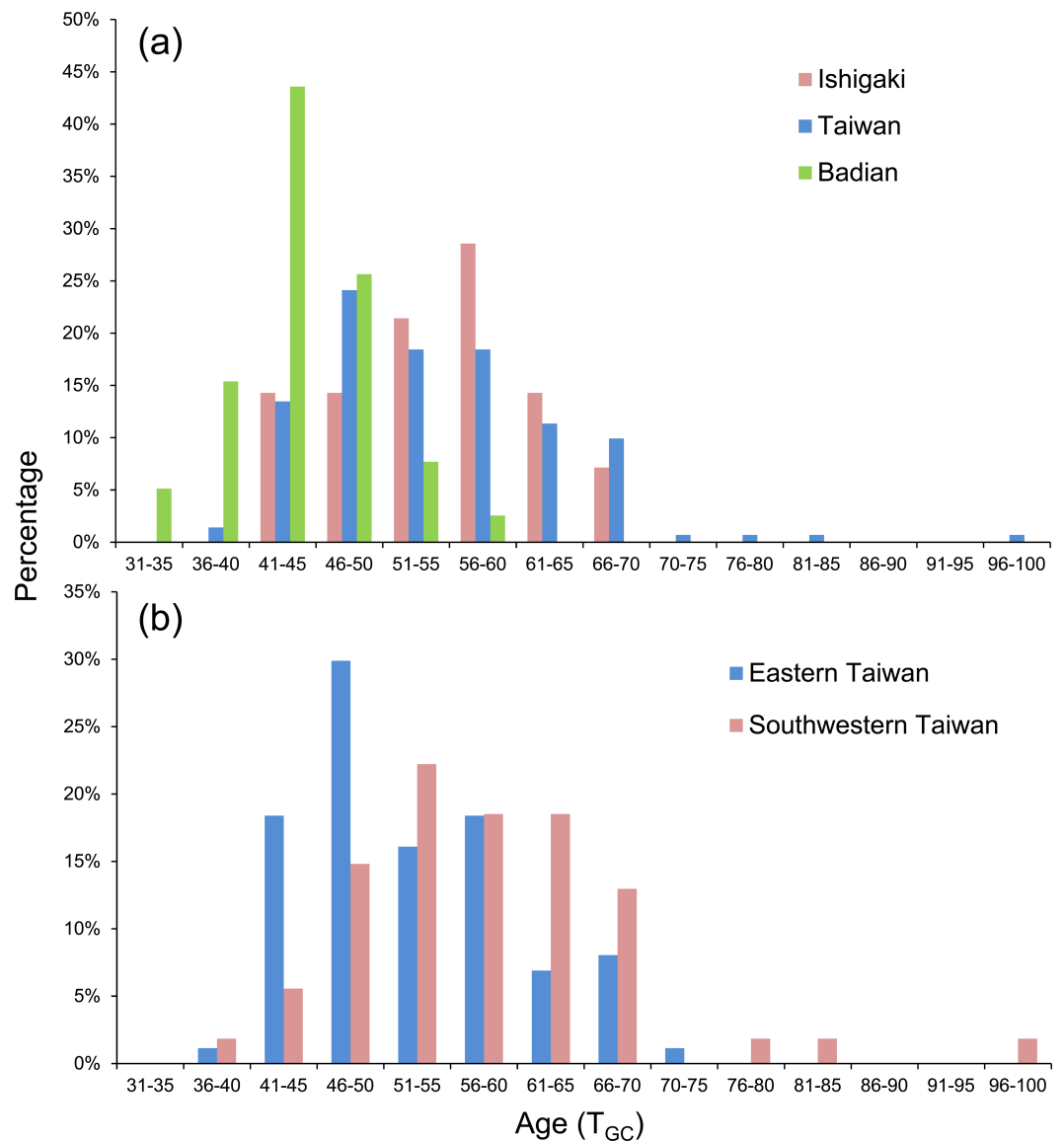


Figure 5 Frequency distributions of PLD based on (A) Ishigaki ($n = 14$), Taiwan ($n = 141$), and Badian ($n = 39$) and (B) Eastern (Shitiping, Jihui, and Green Island, $n = 87$) and Southwestern Taiwan (Checheng, Wanlitong, and Liuqiu, $n = 54$).

Full-size DOI: [10.7717/peerj.4741/fig-5](https://doi.org/10.7717/peerj.4741/fig-5)

DISCUSSION

Early life history traits

The diameters of fertilized eggs and total lengths of newly hatched preleptocephalus larvae of *U. micropterus* were 3.0–3.5 and 10.0 mm (CH Chen, 1994, unpublished data). The total lengths of *U. micropterus* leptocephali are approximately 60.0 mm at metamorphosis, based on observations of two *Uropterygius* spp. in the early metamorphosis stage with total lengths of 51.1 and 56.5 mm (Okiyama, 2014). Therefore, the larval growth rates of *U. micropterus* with PLD of 33–98 days are likely to be between 0.5 and 1.5 mm day⁻¹.

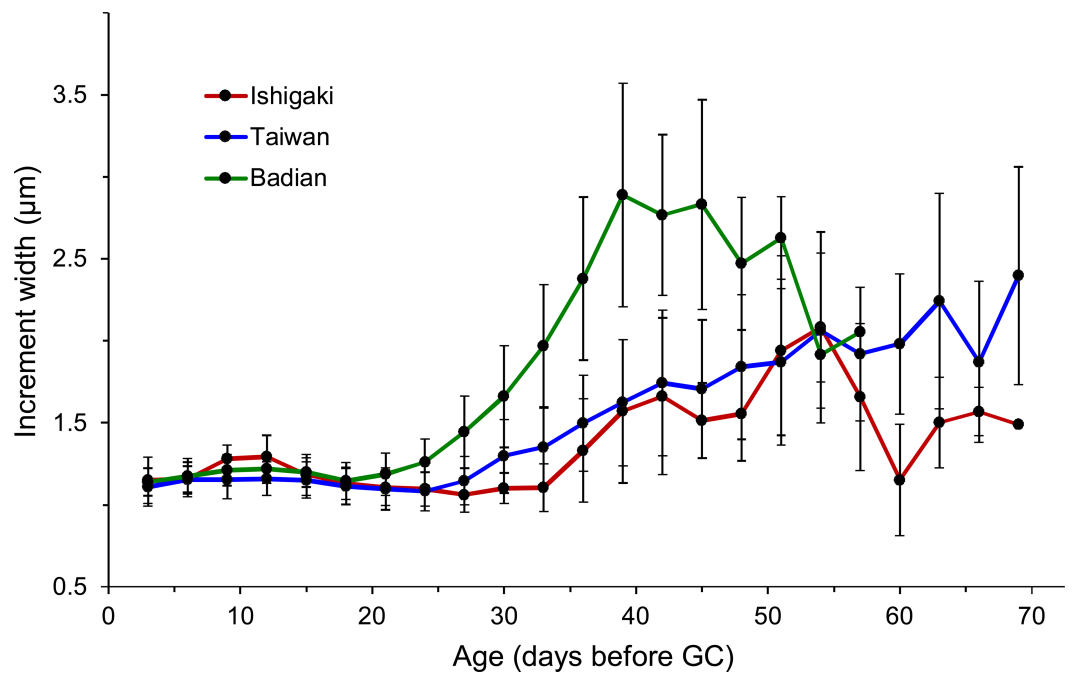


Figure 6 Sequential changes of increment widths from first feeding check (FFC) to growth check (GC) based on three latitudinal groups. Ishigaki ($n = 13$), Taiwan ($n = 126$), and Badian ($n = 37$).

Full-size [DOI: 10.7717/peerj.4741/fig-6](https://doi.org/10.7717/peerj.4741/fig-6)

Table 6 Otolith increments and growth rates from first feeding check (FFC) to growth check (GC). Specimens from Taiwan are divided into eastern and southwestern groups to test the effect of different current conditions on early life history traits.

		Ishigaki IG	Southwestern Taiwan CC, KT, LQ	Eastern Taiwan ST, JH, GI	Badian BD
T_{GC}	Range	41–68	40–98	39–74	33–56
(days)	Mean ^{***}	54.6 ± 7.7^{ab}	57.9 ± 10.5^a	52.6 ± 8.0^b	43.9 ± 4.9^c
G_{GC}	Range	1.04–1.55	0.93–1.79	0.91–1.87	1.22–2.40
($\mu\text{m day}^{-1}$)	Mean ^{***}	1.28 ± 0.16^c	1.33 ± 0.19^a	1.36 ± 0.16^a	1.60 ± 0.19^b
	N	14	54	87	39

Notes.

IG, Ishigaki; ST, Shitiping; JH, Jihui; GI, Green Island; CC, Checheng; KT, Wanlitong; LQ, Liuqiu; BD, Badian.

^{***} $P < 0.001$ (ANOVA test).

Numbers with the same superscript letters (i.e., a, b, ab) are not significantly different (Tukey HSD test, $P \geq 0.05$).

This fast larval growth rate greater than 1 mm day^{-1} was also observed in four other eel species in the eastern Gulf of Mexico (*Gymnothorax saxicola*, *Ophichthus gomesii*, *Ariosoma balearicum*, and *Paraconger caudilimbatus*) (Bishop, Torres & Crabtree, 2000).

In the present study, the commencement of leptocephalus metamorphosis was defined by the GC where the Sr/Ca ratio drastically decreased and the otolith growth increment widths abruptly increased, similar to findings in other muraenids and eel species (Marui et al., 2001; Correia et al., 2004; Ling, Iizuka & Tzeng, 2005). Although the biological meaning of GC remains unclear, the first growth increment to this check should contain most of the

leptocephalus stage and sufficiently represent the PLD of *U. micropterus* among sampling locations.

Insignificant pairwise Φ_{ST} values among groups with different PLDs (Table S1) indicate that the plasticity of the PLD is likely due to individual acclimatization rather than different genotypes. Although PLD variation can be explained by the different growth conditions or birthplaces of the larvae, clearly characteristic PLDs were still observed among the groups in this study, indicating that regional environmental factors may influence tendencies in early life history traits (Searcy & Sponaugle, 2000; Sponaugle & Pinkard, 2004; Bay et al., 2006). Leis et al. (2013) suggested three general classes of factors that might lead to differences in larval dispersal, including biological (e.g., spawning mode and PLD), physical (water movement and habitat fragmentation) and biophysical differences (principally temperature). In this study, *U. micropterus* at relatively higher latitudes tend to have lower otolith growth rates and longer PLDs compared with specimens at lower latitudes, potentially owing to water temperature. The sea surface temperatures (SSTs) during the spawning season and pelagic leptocephalus stage of *U. micropterus* (Chen, 1997) were derived from Global Sea Temperature (<http://www.seatemperature.org/>) (Fig. S1). The SST of Itoman (Japan) is 5 °C lower than that of Guihulngan (the Philippines) in May and December, indicating that the leptocephali in the different study areas experienced different SSTs regardless of whether the eels were self-recruited or transported from other habitats. The effects of temperature on larval development were discussed in rearing experiments that demonstrated positive correlations in *Anguilla japonica* glass eels and elvers (Fukuda et al., 2009). Leptocephali at lower latitudes with higher SSTs may grow faster and require less time to reach the minimum size for metamorphosis (Reveillac et al., 2008). Because the latitude of Ishigaki is similar to that of eastern Taiwan, neither the mean PLDs nor the otolith growth rates were expected to be different.

Since the effect of SST on larval growth can be excluded from the sampling sites in Taiwanese waters, the relatively longer PLD in the southwestern specimens might be attributable to different current systems or recruitment routes. Larval dispersal route is considered to be strongly influenced by ocean currents (Kim et al., 2007). For instance, newly hatched larvae of *C. myriaster* can be retained in mesoscale eddies for several months, resulting in longer PLD than expected (Kurogi et al., 2012). The strong Kuroshio Current flows northward along the east coast of Taiwan year-round (Rudnick et al., 2011). When leptocephali competent to metamorphose drift to this area, they can instantly metamorphose and settle. However, the current system in southwestern Taiwan is affected by different water masses seasonally, including the intrusion of the Kuroshio branch, the substitution of South China Sea surface water mass into the Taiwan Strait, and other transient oceanographic events (Shaw, 1991; Farris & Wimbush, 1996; Hu et al., 2010). In addition, a weak anticyclonic eddy with a diameter of 100–200 km was identified in this area (Fig. 1, Fig. S2). The leptocephali might entrain in the anticyclonic eddy or complicated current system and therefore require a longer time to settle along the southwest coast of Taiwan.

Population structure and larval dispersal

Previous studies have shown that the dispersal or retention of larvae may greatly influence gene flow for demersal fishes (Taylor & Hellberg, 2003). During the field collection stage, we found that *U. micropterus* inhabited shallow water close to the upper tidal zone, which was usually shallower than 1 m and was exposed to air during low tide. These habitats are usually fragmented, but each has an extremely high density of individuals, suggesting that some larvae hatched in the upper tidal zone may remain in nearshore areas and contribute to local habitats. However, the fast-flowing Kuroshio Current is frequently used by the larvae of many eel species for transportation to a wide range of areas (Miller et al., 2002), which may facilitate *U. micropterus* gene flow. The sampling site at Badian is relatively isolated from the main oceanic current systems around the Philippine archipelago. Compared with the Taiwanese sites in this study, there may be fewer *U. micropterus* leptocephali drifting away from Badian per generation. It is likely that a handful of migrants have sufficiently contributed to the genetic homogenization among the study regions over timescales of tens to hundreds of thousands of years (Reece et al., 2010).

Nevertheless, it seems that limited larval exchange over time is inadequate to explain the significant genetic divergence of Liuqiu from all locations but Green Island with Φ_{ST} before Bonferroni correction. Unknown environmental mechanisms that restrict larval dispersal and enhance massive self-recruitment may be a possible explanation. Previous studies have suggested that the self-recruitment of larvae is a common phenomenon for marine fishes and invertebrates, disregarding larval dispersal capabilities (Taylor & Hellberg, 2003; Teske et al., 2015). Self-recruitment of leptocephali is also surmised more often than dispersal in some areas and is attributed to local current systems, semi-enclosed ocean environments, or the swimming ability of the larvae (Miller et al., 2011; Miller et al., 2016). Furthermore, the PLD of Liuqiu specimens was the longest and most variable (46 to 98 days) of all sampling sites, indicating that *U. micropterus* larvae had more complicated composition and different transportation routes to Liuqiu. The longer PLD implies that some larvae might recruit from places with cooler water or remote populations not included in this study. Further studies with larger-scale sampling among a range of habitats may provide more details on the population genetic structure of *U. micropterus*.

CONCLUSION

In the present study, intraspecific variations in PLD were found in *U. micropterus* among defined groups without obvious population genetic structure. These variations were likely acclimatization-dependent rather than genotype-dependent. Weak divergence of *U. micropterus* was observed in Liuqiu, southwestern Taiwan, most likely owing to the different recruiting routes of the leptocephali. This study suggests that the intraspecific variation in the PLDs of the eels might have resulted from different seawater temperatures and complex ocean conditions.

ACKNOWLEDGEMENTS

We are grateful to Dr. Yuichi Kano, Florence Evacitas, Jiunn-Shiun Chiou, Ming-Tai Chou, Ying-Ching Yuan, Li-Chi Cheng, Yun-Ting Hsieh, Zen-Wei Lin, Kai-Chiang Chang, Po-Wei Huang, Yu-Wei Liu, Chu-Feng Lu and Chang-Chun Liu for their assistance in specimen collection; Dr. Hong-Ming Chen for providing reproductive information on the eels; and Sih-Yu Chen, Han-Ting Huang, and Jhen Hsu for assistance in map drawing. We specially thank Joel Corush and Margaret Scholten for assistance in English editing.

ADDITIONAL INFORMATION AND DECLARATIONS

Funding

The authors received no funding for this work.

Competing Interests

The authors declare there are no competing interests.

Author Contributions

- Wen-Chien Huang conceived and designed the experiments, performed the experiments, analyzed the data, prepared figures and/or tables, authored or reviewed drafts of the paper, approved the final draft.
- Jui-Tsung Chang conceived and designed the experiments, authored or reviewed drafts of the paper, approved the final draft.
- Chun Liao conceived and designed the experiments, performed the experiments, authored or reviewed drafts of the paper, approved the final draft.
- Atsushi Tawa performed the experiments, contributed reagents/materials/analysis tools, authored or reviewed drafts of the paper, approved the final draft.
- Yoshiyuki Iizuka analyzed the data, contributed reagents/materials/analysis tools, authored or reviewed drafts of the paper, approved the final draft.
- Te-Yu Liao and Jen-Chieh Shiao conceived and designed the experiments, contributed reagents/materials/analysis tools, prepared figures and/or tables, authored or reviewed drafts of the paper, approved the final draft.

Animal Ethics

The following information was supplied relating to ethical approvals (i.e., approving body and any reference numbers):

The experimental species is a non-regulated animal, and there is no relevant provision for ethical review process in Taiwan.

Data Availability

The following information was supplied regarding data availability:

The COI and Cytb sequences described here are deposited in GenBank with accession numbers to [MF190188](#) to [MF190364](#).

Supplemental Information

Supplemental information for this article can be found online at <http://dx.doi.org/10.7717/peerj.4741#supplemental-information>.

REFERENCES

- Abràmoff MD, Magalhães PJ, Ram SJ. 2004. Image processing with ImageJ. *Biophotonics International* 11:36–42.
- Bassett D, Montgomery J. 2011. Home range use and movement patterns of the yellow moray eel *Gymnothorax prasinus*. *Journal of Fish Biology* 79:520–525 DOI 10.1111/j.1095-8649.2011.03018.x.
- Bay LK, Buechler K, Gagliano M, Caley MJ. 2006. Intraspecific variation in the pelagic larval duration of tropical reef fishes. *Journal of Fish Biology* 68:1206–1214 DOI 10.1111/j.0022-1112.2006.01016.x.
- Bergenius MAJ, McCormick MI, Meekan MG, Robertson DR. 2005. Environmental influences on larval duration, growth and magnitude of settlement of a coral reef fish. *Marine Biology* 147:291–300 DOI 10.1007/s00227-005-1575-z.
- Bishop RE, Torres JJ, Crabtree RE. 2000. Chemical composition and growth indices in leptocephalus larvae. *Marine Biology* 137:205–214 DOI 10.1007/s002270000362.
- Bleeker P. 1852. Bijdrage tot de kennis der ichthijologische fauna van de Moluksche Eilanden. Visschen van Amboina en Ceram. *Natuurkundig Tijdschrift voor Nederlandsch Indië* 3(2):229–309.
- Bowen BW, Bass AL, Muss A, Carlin J, Robertson DR. 2006. Phylogeography of two Atlantic squirrelfishes (Family Holocentridae): exploring links between pelagic larval duration and population connectivity. *Marine Biology* 149:899–913 DOI 10.1007/s00227-006-0252-1.
- Bowen BW, Bass AL, Rocha LA, Grant WS, Robertson DR. 2001. Phylogeography of the trumpetfishes (*Aulostomus*): ring species complex on a global scale. *Evolution* 55:1029–1039 DOI 10.1111/j.0014-3820.2001.tb00619.x.
- Chen HM. 1997. Systematic studies on the muraenid fishes (Muraenidae) from the waters around Taiwan. D Phil. Thesis, National Taiwan Ocean University.
- Correia AT, Able KW, Antunes C, Coimbra J. 2004. Early life history of the American conger eel (*Conger oceanicus*) as revealed by otolith microstructure and microchemistry of metamorphosing leptocephali. *Marine Biology* 145:477–488 DOI 10.1007/s00227-004-1349-z.
- Correia AT, Ramos AA, Barros F, Silva G, Hamer P, Morais P, Cunha RL, Castilho R. 2012. Population structure and connectivity of the European conger eel (*Conger conger*) across the north-eastern Atlantic and western Mediterranean: integrating molecular and otolith elemental approaches. *Marine Biology* 159:1509–1525 DOI 10.1007/s00227-012-1936-3.
- Excoffier L, Lischer HE. 2010. Arlequin suite ver 3.5: a new series of programs to perform population genetics analyses under Linux and Windows. *Molecular Ecology Resources* 10:564–567 DOI 10.1111/j.1755-0998.2010.02847.x.

- Excoffier L, Smouse PE, Quattro JM. 1992.** Analysis of molecular variance inferred from metric distances among DNA haplotypes: application to human mitochondrial DNA restriction data. *Genetics* **131**:479–491.
- Farris A, Wimbush M. 1996.** Wind-induced Kuroshio intrusion into the South China Sea. *Journal of Oceanography* **52**:771–784 DOI [10.1007/BF02239465](https://doi.org/10.1007/BF02239465).
- Faurby S, Barber PH. 2012.** Theoretical limits to the correlation between pelagic larval duration and population genetic structure. *Molecular Ecology* **21**:3419–3432 DOI [10.1111/j.1365-294X.2012.05609.x](https://doi.org/10.1111/j.1365-294X.2012.05609.x).
- Froese R, Pauly D. 2016.** FishBase: World Wide Web electronic publication. Available at www.fishbase.org (accessed on June 2016).
- Fukuda N, Kuroki M, Shinoda A, Yamada Y, Okamura A, Aoyama J, Tsukamoto K. 2009.** Influence of water temperature and feeding regime on otolith growth in *Anguilla japonica* glass eels and elvers: does otolith growth cease at low temperatures? *Journal of Fish Biology* **74**:1915–1933 DOI [10.1111/j.1095-8649.2009.02287.x](https://doi.org/10.1111/j.1095-8649.2009.02287.x).
- Han YS, Hung CL, Iizuka Y, Chang HC, Chang BJ, Ho HC, Shiao JC. 2010.** Does larval duration contribute to population genetic isolation of the Japanese eel *Anguilla japonica*? *Fisheries Management and Ecology* **17**:366–368 DOI [10.1111/j.1365-2400.2009.00729.x](https://doi.org/10.1111/j.1365-2400.2009.00729.x).
- Hu J, Kawamura H, Li C, Hong H, Jiang Y. 2010.** Review on current and seawater volume transport through the Taiwan Strait. *Journal of Oceanography* **66**:591–610 DOI [10.1007/s10872-010-0049-1](https://doi.org/10.1007/s10872-010-0049-1).
- Kim H, Kimura S, Shinoda A, Kitagawa T, Sasai Y, Sasaki H. 2007.** Effect of El Niño on migration and larval transport of the Japanese eel (*Anguilla japonica*). *ICES Journal of Marine Science* **64**:1387–1395 DOI [10.1093/icesjms/fsm091](https://doi.org/10.1093/icesjms/fsm091).
- Kimura Y, Ishikawa S, Tokai T, Nishida M, Tsukamoto K. 2004.** Early life history characteristics and genetic homogeneity of *Conger myriaster* leptocephali along the east coast of central Japan. *Fisheries Research* **70**:61–69 DOI [10.1016/j.fishres.2004.06.015](https://doi.org/10.1016/j.fishres.2004.06.015).
- Kurogi H, Mochioka N, Okazaki M, Takahashi M, Miller MJ, Tsukamoto K, Ambe D, Katayama S, Chow S. 2012.** Discovery of a spawning area of the common Japanese conger *Conger myriaster* along the Kyushu-Palau Ridge in the western North Pacific. *Fisheries Science* **78**:525–532 DOI [10.1007/s12562-012-0468-6](https://doi.org/10.1007/s12562-012-0468-6).
- Kuroki M, Aoyama J, Miller MJ, Yoshinaga T, Shinoda A, Hagihara S, Tsukamoto K. 2009.** Sympatric spawning of *Anguilla marmorata* and *Anguilla japonica* in the western North Pacific Ocean. *Journal of Fish Biology* **74**:1853–1865 DOI [10.1111/j.1095-8649.2009.02299.x](https://doi.org/10.1111/j.1095-8649.2009.02299.x).
- Lee TW, Miller MJ, Hwang HB, Wouthuyzen S, Tsukamoto K. 2008.** Distribution and early life history of *Kaupichthys* leptocephali (family Chlopsidae) in the central Indonesian Seas. *Marine Biology* **153**:285–295 DOI [10.1007/s00227-007-0804-z](https://doi.org/10.1007/s00227-007-0804-z).
- Leis JM, Caselle JE, Bradbury IR, Kristiansen T, Llopiz JK, Miller MJ, O'Connor MI, Paris CB, Shanks AL, Sogard SM, Swearer SE, Trembl EA, Vetter RD, Warner RR. 2013.** Does fish larval dispersal differ between high and low latitudes? *Proceedings of the Royal Society of London Series B: Biological Sciences* **280**:20130327 DOI [10.1098/rspb.2013.0327](https://doi.org/10.1098/rspb.2013.0327).

- Librado P, Rozas J. 2009.** DnaSP v5: a software for comprehensive analysis of DNA polymorphism data. *Bioinformatics* **25**:1451–1452 DOI [10.1093/bioinformatics/btp187](https://doi.org/10.1093/bioinformatics/btp187).
- Ling YJ, Iizuka Y, Tzeng WN. 2005.** Decreased Sr/Ca ratios in the otoliths of two marine eels, *Gymnothorax reticularis* and *Muraenesox cinereus*, during metamorphosis. *Marine Ecology Progress Series* **304**:201–206 DOI [10.3354/meps304201](https://doi.org/10.3354/meps304201).
- Loh KH, Shao KT, Chen HM. 2011.** Length–weight relationships for 39 species of moray eel from the waters around Taiwan. *Journal of Applied Ichthyology* **27**:945–948 DOI [10.1111/j.1439-0426.2010.01601.x](https://doi.org/10.1111/j.1439-0426.2010.01601.x).
- Macpherson E, Raventos N. 2006.** Relationship between pelagic larval duration and geographic distribution of Mediterranean littoral fishes. *Marine Ecology Progress Series* **327**:257–265 DOI [10.3354/meps327257](https://doi.org/10.3354/meps327257).
- Marui M, Arai T, Miller MJ, Jellyman DJ, Tsukamoto K. 2001.** Comparison of early life history between New Zealand temperate eels and Pacific tropical eels revealed by otolith microstructure and microchemistry. *Marine Ecology Progress Series* **213**:273–284 DOI [10.3354/meps213273](https://doi.org/10.3354/meps213273).
- Miller MJ, McCleave JD. 2007.** Species assemblages of leptocephali in the southwestern Sargasso Sea. *Marine Ecology Progress Series* **344**:197–212 DOI [10.3354/meps06923](https://doi.org/10.3354/meps06923).
- Miller MJ, Otake T, Minagawa G, Inagaki T, Tsukamoto K. 2002.** Distribution of leptocephali in the Kuroshio current and East China Sea. *Marine Ecology Progress Series* **235**:279–288 DOI [10.3354/meps235279](https://doi.org/10.3354/meps235279).
- Miller MJ, Wouthuyzen S, Ma T, Aoyama J, Suharti SR, Minegishi Y, Tsukamoto K. 2011.** Distribution, diversity, and abundance of garden eel larvae off West Sumatra, Indonesia. *Zoological Studies* **50**:177–191.
- Miller MJ, Wouthuyzen S, Sugeha HY, Kuroki M, Tawa A, Watanabe S, Syahailatua A, Suharti S, Tantu FY, Otake T, Tsukamoto K, Aoyama J. 2016.** High biodiversity of leptocephali in Tomini Bay Indonesia in the center of the Coral Triangle. *Regional Studies in Marine Science* **8**:99–113 DOI [10.1016/j.rsma.2016.09.006](https://doi.org/10.1016/j.rsma.2016.09.006).
- Moyer JT, Zaiser MJ. 1982.** Reproductive behavior of moray eels at Miyake-jima, Japan. *Japanese Journal of Ichthyology* **28**:466–468 DOI [10.11369/jji1950.28.466](https://doi.org/10.11369/jji1950.28.466).
- Nanninga GB, Saenz Agudelo P, Manica A, Berumen ML. 2014.** Environmental gradients predict the genetic population structure of a coral reef fish in the Red Sea. *Molecular Ecology* **23**:591–602 DOI [10.1111/mec.12623](https://doi.org/10.1111/mec.12623).
- Nei M. 1987.** *Molecular evolutionary genetics*. New York: Columbia University Press.
- Okiyama M. 2014.** *An atlas of early stage fishes in Japan*. Second Edition. Tokyo: Tokai University Press.
- R Development Core Team. 2013.** R: a language and environment for statistical computing. Vienna: R Foundation for Statistical Computing. Available at <https://cran.r-project.org/>.
- Reece JS, Bowen BW, Joshi K, Goz V, Larson A. 2010.** Phylogeography of two moray eels indicates high dispersal throughout the Indo-Pacific. *Journal of Heredity* **102**:1–12 DOI [10.1093/jhered/esq036](https://doi.org/10.1093/jhered/esq036).
- Reece JS, Bowen BW, Smith DG, Larson A. 2011.** Comparative phylogeography of four Indo-Pacific moray eel species (Muraenidae) reveals comparable ocean-wide genetic

- connectivity despite five-fold differences in available adult habitat. *Marine Ecology Progress Series* **437**:269–277 DOI [10.3354/meps09248](https://doi.org/10.3354/meps09248).
- Reveillac E, Feunteun E, Berrebi P, Gagnaire PA, Lecomte-Finiger R, Bosc P, Robinet T. 2008.** *Anguilla marmorata* larval migration plasticity as revealed by otolith microstructural analysis. *Canadian Journal of Fisheries and Aquatic Sciences* **65**:2127–2137 DOI [10.1139/F08-122](https://doi.org/10.1139/F08-122).
- Rice WR. 1989.** Analyzing tables of statistical tests. *Evolution* **43**:223–225 DOI [10.2307/2409177](https://doi.org/10.2307/2409177).
- Rudnick DL, Jan S, Centurioni L, Lee CM, Lien RC, Wang J, Lee DK, Tseng RS, Kim YY, Chern CS. 2011.** Seasonal and mesoscale variability of the Kuroshio near its origin. *Oceanography* **24**:52–63 DOI [10.5670/oceanog.2011.94](https://doi.org/10.5670/oceanog.2011.94).
- Searcy SP, Sponaugle S. 2000.** Variable larval growth in a coral reef fish. *Marine Ecology Progress Series* **206**:213–226 DOI [10.3354/meps206213](https://doi.org/10.3354/meps206213).
- Shaw PT. 1991.** The seasonal variation of the intrusion of the Philippine Sea water into the South China Sea. *Journal of Geophysical Research: Oceans* **96**:821–827 DOI [10.1029/90JC02367](https://doi.org/10.1029/90JC02367).
- Shinoda A, Tanaka H, Kagawa H, Ohta H, Tsukamoto K. 2004.** Otolith microstructural analysis of reared larvae of the Japanese eel *Anguilla japonica*. *Fisheries Science* **70**:339–341 DOI [10.1111/j.1444-2906.2003.00810.x](https://doi.org/10.1111/j.1444-2906.2003.00810.x).
- Smith DG. 2012.** A checklist of the moray eels of the world (Teleostei: Anguilliformes: Muraenidae). *Zootaxa* **3474**:1–64.
- Song CB, Near TJ, Page LM. 1998.** Phylogenetic relations among percid fishes as inferred from mitochondrial *cytochrome b* DNA sequence data. *Molecular Phylogenetics and Evolution* **10**:343–353 DOI [10.1006/mpev.1998.0542](https://doi.org/10.1006/mpev.1998.0542).
- Sponaugle S, Pinkard DR. 2004.** Impact of variable pelagic environments on natural larval growth and recruitment of the reef fish *Thalassoma bifasciatum*. *Journal of Fish Biology* **64**:34–54 DOI [10.1111/j.1095-8649.2004.00279.x](https://doi.org/10.1111/j.1095-8649.2004.00279.x).
- Sugeha HY, Shinoda A, Marui M, Arai T, Tsukamoto K. 2001.** Validation of otolith daily increments in the tropical eel *Anguilla marmorata*. *Marine Ecology Progress Series* **220**:291–294 DOI [10.3354/meps220291](https://doi.org/10.3354/meps220291).
- Taberlet P, Meyer A, Bouvet J. 1992.** Unusually large mitochondrial variation in populations of the blue tit, *Parus caeruleus*. *Molecular Ecology* **1**:27–36 DOI [10.1111/j.1365-294X.1992.tb00152.x](https://doi.org/10.1111/j.1365-294X.1992.tb00152.x).
- Tamura K, Stecher G, Peterson D, Filipowski A, Kumar S. 2013.** MEGA6: molecular evolutionary genetics analysis version 6.0. *Molecular Biology and Evolution* **30**:2725–2729 DOI [10.1093/molbev/mst197](https://doi.org/10.1093/molbev/mst197).
- Taylor MS, Hellberg ME. 2003.** Genetic evidence for local retention of pelagic larvae in a Caribbean reef fish. *Science* **299**:107–109 DOI [10.1126/science.1079365](https://doi.org/10.1126/science.1079365).
- Teacher AGF, Griffiths DJ. 2011.** HapStar: automated haplotype network layout and visualization. *Molecular Ecology Resources* **11**:151–153 DOI [10.1111/j.1755-0998.2010.02890.x](https://doi.org/10.1111/j.1755-0998.2010.02890.x).

- Teske PR, Sandoval-Castillo J, Van Sebille E, Waters J, Beheregaray LB. 2015.** On-shelf larval retention limits population connectivity in a coastal broadcast spawner. *Marine Ecology Progress Series* **532**:1–12 DOI [10.3354/meps11362](https://doi.org/10.3354/meps11362).
- Thresher RE, Colin PL, Bell LJ. 1989.** Planktonic duration, distribution and population structure of western and central Pacific damselfishes (Pomacentridae). *Copeia* **1989**:420–434 DOI [10.2307/1445439](https://doi.org/10.2307/1445439).
- Tsukamoto K. 2006.** Oceanic biology: spawning of eels near a seamount. *Nature* **439**:929–929 DOI [10.1038/439929a](https://doi.org/10.1038/439929a).
- Tsukamoto K, Aoyama J, Miller MJ. 2002.** Migration, speciation, and the evolution of diadromy in anguillid eels. *Canadian Journal of Fisheries and Aquatic Sciences* **59**:1989–1998 DOI [10.1139/f02-165](https://doi.org/10.1139/f02-165).
- Tsukamoto K, Watanabe S, Kuroki M, Aoyama J, Miller MJ. 2014.** Freshwater habitat use by a moray eel species, *Gymnothorax polyuranodon*, in Fiji shown by otolith microchemistry. *Environmental Biology of Fishes* **97**:1377–1385 DOI [10.1007/s10641-014-0228-9](https://doi.org/10.1007/s10641-014-0228-9).
- Ward RD, Zemplak TS, Innes BH, Last PR, Hebert PD. 2005.** DNA barcoding Australia's fish species. *Philosophical Transactions of the Royal Society of London B: Biological Sciences* **360**:1847–1857 DOI [10.1098/rstb.2005.1716](https://doi.org/10.1098/rstb.2005.1716).
- Weersing KA, Toonen RJ. 2009.** Population genetics, larval dispersal, and demographic connectivity in marine systems. *Marine Ecology Progress Series* **393**:1–12 DOI [10.3354/meps08287](https://doi.org/10.3354/meps08287).