

RESEARCH

Open Access



The relevance of cerebrospinal fluid α -synuclein levels to sporadic and familial Alzheimer's disease

Daniel Twohig¹, Elena Rodriguez-Vieitez², Sigrid B. Sando^{3,4}, Guro Berge⁴, Camilla Lauridsen⁴, Ina Møller³, Gøril R. Grøntvedt^{3,4}, Geir Bråthen^{3,4}, Kalicharan Patra¹, Guojun Bu⁵, Tammie L. S. Benzinger⁶, Celeste M. Karch⁷, Anne Fagan⁸, John C. Morris⁸, Randall J. Bateman⁸, Agneta Nordberg^{2,9}, Linda R. White^{3,4}, Henrietta M. Nielsen^{1*} and for the Dominantly Inherited Alzheimer Network (DIAN)

Abstract

Accumulating evidence demonstrating higher cerebrospinal fluid (CSF) α -synuclein (α Syn) levels and α Syn pathology in the brains of Alzheimer's disease (AD) patients suggests that α Syn is involved in the pathophysiology of AD. To investigate whether α Syn could be related to specific aspects of the pathophysiology present in both sporadic and familial disease, we quantified CSF levels of α Syn and assessed links to various disease parameters in a longitudinally followed cohort ($n = 136$) including patients with sporadic mild cognitive impairment (MCI) and AD, and in a cross-sectional sample from the Dominantly Inherited Alzheimer's Network ($n = 142$) including participants carrying autosomal dominant AD (ADAD) gene mutations and their non-mutation carrying family members. Our results show that sporadic MCI patients that developed AD over a period of two years exhibited higher baseline α Syn levels ($p = 0.03$), which inversely correlated to their Mini-Mental State Examination scores, compared to cognitively normal controls ($p = 0.02$). In the same patients, there was a dose-dependent positive association between CSF α Syn and the *APOE ϵ 4* allele. Further, CSF α Syn levels were higher in symptomatic ADAD mutation carriers versus non-mutation carriers ($p = 0.03$), and positively correlated to the estimated years from symptom onset ($p = 0.05$) across all mutation carriers. In asymptomatic (Clinical Dementia Rating < 0.5) PET amyloid-positive ADAD mutation carriers CSF α Syn was positively correlated to ¹¹C-Pittsburgh Compound-B (PiB) retention in several brain regions including the posterior cingulate, superior temporal and frontal cortical areas. Importantly, *APOE ϵ 4*-positive ADAD mutation carriers exhibited an association between CSF α Syn levels and mean cortical PiB retention ($p = 0.032$). In both the sporadic AD and ADAD cohorts we found several associations predominantly between CSF levels of α Syn, tau and amyloid- β_{1-40} .

Our results suggest that higher CSF α Syn levels are linked to AD pathophysiology at the early stages of disease development and to the onset of cognitive symptoms in both sporadic and autosomal dominant AD. We conclude that *APOE ϵ 4* may promote the processes driven by α Syn, which in turn may reflect on molecular mechanisms linked to the asymptomatic build-up of amyloid plaque burden in brain regions involved in the early stages of AD development.

Keywords: Alzheimer's disease, Mild cognitive impairment, alpha-synuclein, Biomarkers, *APOE ϵ 4*

* Correspondence: henrietta.nielsen@dbb.su.se

¹Department of Biochemistry and Biophysics, Stockholm University, Svante Arrhenius väg 16B, 106 91 Stockholm, Sweden

Full list of author information is available at the end of the article



Introduction

Intracellular neurofibrillary tau tangles and extracellular amyloid- β (A β) plaques are the main neuropathological hallmarks of Alzheimer's disease (AD), however, at autopsy more than 50% of these patients exhibit concurrent α -synuclein (α Syn) pathology [1, 16, 31]. Conversely, it has been shown that A β plaques promote the development of cortical α Syn lesions in individuals with Parkinson's disease (PD), and up to 50% of PD with dementia patients develop A β and tau pathology sufficient for a secondary pathological diagnosis of AD [19, 46]. α -synuclein, a 140 amino-acid protein encoded by the *SNCA* gene, is abundantly expressed neuronal presynaptic terminals [20]. The peptide corresponding to residues 61–95 of α Syn was originally discovered 25 years ago in A β plaques and named the non-A β component (NAC) [58]. Follow-up studies from the same group further demonstrated NAC immune-reactivity in diffuse A β plaques which may result in the formation of mature compact A β plaques [33]. Results from these studies suggest that α Syn might be involved in the development of AD from the very early stages of A β pathology formation. In support, a recent study demonstrated a positive correlation between cerebrospinal fluid levels of α Syn and A β plaque deposition in cognitively normal individuals with subjective memory complaints. The authors speculated that CSF α Syn levels may be related to pathophysiological mechanisms occurring early in the preclinical phase of AD [59].

The relevance of correlating α Syn levels in the CSF to brain parenchymal concentration of α Syn in AD patients is nevertheless controversial due to the lack of autopsy-validated studies assessing α Syn levels in paired CSF and brain tissue samples. Ideally, advancements in radiotracer chemistry could allow for ante-mortem imaging studies in which CSF α Syn concentrations could be correlated to α Syn load in the antemortem brain, similar to PiB-PET correlations between CSF A β levels and brain amyloid plaque load [13]. Hence the exact relationship between the low CSF α Syn and brain parenchymal Lewy bodies as occurring in patients with synucleinopathies like PD [68] and dementia with Lewy bodies (DLB) [37] remains unknown. Similarly, the relevance of slightly increased CSF α Syn levels in AD patients [26] to α Syn pathology in the brain is also unclear.

In a study of brains from AD patients devoid of Lewy bodies, intracellular levels of soluble monomeric α Syn were two-fold higher than in controls and significantly correlated to cognitive decline [28]. Potential alterations of CSF α Syn levels in the same subjects were not investigated. Although α Syn can interact with a multitude of cellular components, of which many have been shown to potentially contribute to neurodegeneration [66], the molecular underpinnings of these findings in relation to the development of AD remain poorly understood.

Results from studies of the AD mouse model Tg2576 crossed onto an *SNCA* knockout background proposed that loss of α Syn increased the A β plaque load in all fore-brain areas by the age of 18 months [23]. In support, it was found that α Syn inhibited amyloid plaque formation in *APP^{PS1}* mice co-expressing the *SNCA* gene. The authors of the same study further demonstrated that the seeding activity of injected A β containing brain homogenates was reduced, and that A β deposition was suppressed in grafted tissue from the [A30P]aSYN transgenic mouse model [2]. The mechanisms underlying the inverse association between A β plaque formation and α Syn have yet to be determined, and may be complicated by the existence of various α Syn species (monomers, oligomers, fibrils) which individually may have differing effects on AD pathophysiology. For example, Larson et al. recently reported that increasing oligomeric α Syn selectively decreased presynaptic proteins and cognitive performance in the bigenic J20xTgI2.2 AD mouse model where both monomeric and oligomeric α Syn increase with age, [27].

In addition to the overlapping neuropathological features between AD and synucleinopathies like PD and DLB, but not multiple system atrophy [42], these disorders also share the *APOE ϵ 4* allele as a strong genetic risk factor. The *APOE ϵ 4* allele increases the risk of AD by up to 15-fold and the risk of DLB by up to 6-fold [7, 10]. Furthermore, the *APOE ϵ 4* allele also increases the risk of PD and decreases the age of disease onset [30]. The exact molecular pathways underlying the increased risk of several neurodegenerative disorders in *APOE ϵ 4*-carriers have yet to be identified but the urgency to do so is clearly illustrated by the rather high frequency (~14%) of this allele in the normal population [32].

In the current study we aimed to assess the pathophysiological relevance of α Syn levels in CSF to the development of AD, including surrogate markers of AD neuropathology, in a clinical setting. We further aimed to investigate potential effects of the *APOE ϵ 4* risk allele on identified relationships. For our purposes we used two cohorts, a longitudinally followed cohort of patients with sporadic MCI and AD to investigate potential relationships between α Syn and disease progression. The second cohort was comprised of a cross-sectional sample from the Dominantly Inherited Alzheimer's Disease Network (DIAN) including participants with autosomal dominant mutations in the *APP*, *PSEN1* and *PSEN2* genes causing early-onset autosomal dominant Alzheimer's disease (ADAD), and their non-mutation carrying relative control participants [3]. The latter cohort was included to enable specific analyses of relationships between α Syn and the development of symptoms in subjects that will de facto develop Alzheimer's disease. Furthermore, inclusion of subjects with ADAD mutations also enabled us to assess potential associations

between CSF α Syn levels and specific mutations in the genes encoding key components in the A β peptide production pathway i.e. the amyloid precursor protein (APP) and the presenilins 1 and 2 (PS1 and PS2).

Materials and methods

Study participants

Subjects from two different cohorts were included in the present study. The longitudinally followed cohort totaling $n = 136$ subjects, including $n = 52$ subjects that were cognitively healthy controls and $n = 84$ patients who at baseline were diagnosed with sporadic MCI ($n = 57$) or AD ($n = 27$). Clinical diagnoses of MCI or AD were based on the International Working Group on Mild Cognitive Impairment Criteria [63] and the National Institute of Neurological and Communicative Disorders and Stroke and the Alzheimer's Disease and Related Disorders Association criteria [34, 35]. The clinical workup and results from parts of this cohort were previously reported [5, 6, 45]. Briefly, consenting participants were recruited by the Department of Neurology at Trondheim University Hospital in Trondheim, Norway on the conditions that individuals had adequate vision and hearing, did not exhibit high alcohol consumption or use of anti-coagulation medication, and had no psychiatric or malignant disease. Cognitively healthy control subjects were recruited from elderly caregivers who were not genetically related to the patients or from societies for retired people in central Norway. Cerebrospinal fluid was drawn at baseline and at intervals of 12-months follow-up examinations over two years. Control individuals had their CSF sampled at baseline only, due to restrictions pertaining to ethical permits; however, they were clinically assessed both at baseline and at the study-end. Cerebrospinal fluid sampling and CSF AD biomarker analysis (for research purposes only) including quantification of A β ₁₋₄₀, A β ₁₋₄₂, total tau (t-tau) and tau phosphorylated at Thr181 (p-tau) levels were previously described [6]. Both patient and control groups were *APOE* genotyped from blood samples and underwent cerebral volumetric 3-Tesla MRI (3T-MRI) brain imaging at baseline and after two years. Upon completion of the study, MCI patients were re-classified into two groups based on their baseline and two-year follow-up diagnoses. Patients diagnosed with MCI at baseline and who remained diagnosed with MCI after two years were classified as MCI-MCI ($n = 30$), while patients who were MCI at baseline but that fulfilled the clinical criteria for AD after two years were classified as MCI-AD ($n = 27$). The studies performed on this cohort were approved by the regional ethics committee in Trondheim, Norway (2010/226) and Stockholm, Sweden (2016/771-31/4) and carried out in agreement with the Helsinki Declaration.

Participants in the second cohort were a cross-sectional sample from the multi-site Dominantly Inherited Alzheimer's Network (DIAN) (<https://dian.wustl.edu/our-research/observational-study/>). The DIAN registry includes mutation carrying and non-mutation carrying adult biological children from families in which one parent carries an ADAD causative mutation in the *APP*, *PSEN1* or *PSEN2* genes. At inclusion, and during subsequent visits, DIAN participants were assessed neuropsychologically, biochemically (CSF and plasma), and underwent structural neuroimaging using 3T-MRI, and functional neuroimaging using PET combined with either fluorodeoxyglucose (FDG-PET) or PiB to quantify brain glucose metabolism and A β deposition respectively [4]. Updated datasets are generated biannually in what are termed dataset "freezes". For the current study we examined subjects from the DIAN dataset freeze-10 including a total of $n = 92$ ADAD mutation carriers: $n = 24$ *APP*, $n = 50$ *PSEN1*, and $n = 18$ *PSEN2* mutation carriers, as well as $n = 50$ non-mutation carriers who were genetically related to the mutation carriers but did not harbor ADAD mutations. Included subjects were considered as symptomatic if fulfilling the criteria for a Clinical Dementia Rating (CDR) score ≥ 0.5 . The purposes of the current study involving DIAN participants were approved by the local ethics committee in Stockholm, Sweden (2016/2114-31/4) and the study was carried out in agreement with the Helsinki Declaration.

α Syn quantification

Quantification of CSF α Syn in samples from both cohorts was performed using a commercially available sandwich enzyme-linked immunosorbent assay (ELISA) (AnaSpec; California, USA) according to the manufacturer's instructions and using overnight incubation at 4 °C for the sample incubation step. Samples were assayed alongside freshly prepared standard curves for each individual assay. Standards, study subject and internal control samples were run in duplicates and averaged. Spike recovery experiments were performed to assess matrix effects by adding known concentrations of the supplier-provided α Syn standard to diluted CSF resulting in a spike recovery range of 99–122%. Intra- and inter-assay coefficients of variation were determined by repeated analysis of pooled CSF samples as internal controls resulting in coefficients of variation of $< 15\%$ respectively for the two lots of assays used to quantify α Syn in the two cohorts.

DIAN participant MRI image acquisition

Structural MRI acquisition was performed using the Alzheimer Disease Neuroimaging Initiative (ADNI) protocol [21, 22]. Participating sites were required to pass initial and regular follow-up quality control assessments to insure acquisition conformity. Each participant received an accelerated 3D sagittal T1-weighted MPRAGE on a 3T scanner. A high quality, whole-brain image with

1.1 × 1.1 × 1.2 mm voxels was acquired in approximately 5–6 min. Before further image processing, images were screened for artifacts and protocol compliance by the ADNI imaging core.

DIAN participant PET image acquisition and processing

A subset of $n = 132$ ADAD participants (mutation carriers $n = 85$, non-mutation carriers $n = 47$) underwent PiB-PET imaging. Each site underwent an initial evaluation to ensure compliance with common PiB-PET ADNI protocols. Amyloid imaging was performed with a bolus injection of ~15 mCi of PiB. Dynamic acquisition consisted of either a 70-min scan starting at injection or a 30-min scan beginning 40 min post injection. For analysis, the PiB-PET data within the common time frame between 40 and 70 min was used. The ADNI PET Core verified that all PET images were acquired using the established protocol and substantially free of artifacts.

Each subject's PET data were motion-corrected and registered to their MRI using methods described in detail elsewhere [11, 49]. For each participant, the T1-weighted MRI image was segmented into grey and white matter tissue maps. An inclusive binary gray matter mask was subsequently applied to the resulting atlas to obtain individual gray matter atlases. An automated quantitative image analysis approach was applied using regions of interest generated with FreeSurfer [14] using an in-house software previously described [36, 40, 54]. A regional spread function based approach for partial volume correction of PET data was subsequently implemented using FreeSurfer regions [48] to generate partial volume corrected regional PET data. Partial volume corrected PiB data were used to quantify PiB retention, as it was demonstrated to produce accurate results [53].

Regional partial volume corrected PiB retention data was evaluated in all FreeSurfer regions of interest in Standardized Uptake Value Ratio (SUVR) units, using the brainstem as reference, as this was reported as optimum quantification procedure for PiB-PET in DIAN studies [53]. Overall brain PiB retention was given by the mean cortical PiB retention, calculated as the average PiB SUVR across four cortical regions (prefrontal, gyrus rectus, lateral temporal, and precuneus) as previously used [44]. In addition, exploratory analyses were performed across forty-two bilateral regions of interest from the FreeSurfer atlas. PiB positivity was defined by a mean cortical SUVR uptake using partial volume corrected data and the brainstem as reference region ≥ 0.72 cutoff value, equivalent to an SUVR of ≥ 1.42 if using the cerebellar grey matter, as previously described [56].

Statistics

Normal distribution of the data was assessed by use of the Shapiro-Wilk test. Accordingly, statistical tests

applied for cross-sectional group comparisons were either non-parametric (Kruskal-Wallis tests followed by pairwise comparisons with the Mann-Whitney U test) or parametric (analysis of variance [ANOVA] or analysis of covariance [ANCOVA] with age entered as covariate when relevant, followed by pairwise comparisons when appropriate, performed with the Student's t -test). The Bonferroni correction was applied to account for multiple comparisons.

In the longitudinal cohort, CSF α Syn levels did not follow a normal distribution and were therefore log-transformed to achieve normal distribution of the data for which parametric tests were used. Longitudinal changes were assessed using the repeated measures multivariate analysis of variance (MANOVA) approach, and correlation analyses were performed by use of the Spearman's rank correlation test on non-log-transformed data. Data is presented as mean \pm standard deviation or as median with range (min-max). A p -value of ≤ 0.05 was considered statistically significant.

In order to compare CSF α Syn levels between subjects with AD pathological versus non-pathological CSF AD biomarker levels receiver operating characteristic (ROC) curve analyses were performed for the longitudinal cohort using the clinical status (cognitively healthy controls versus a baseline AD diagnosis) as the dichotomous variable to establish biochemical cutoff values. Cutoff values were determined based on the highest Youden index defined as $sensitivity + specificity - 1$.

In the DIAN cohort, CSF α Syn levels did not follow a normal distribution hence we log-transformed the data so that the association between α Syn with estimated years from symptom onset (EYO) was evaluated using the Pearson's correlation test. For brain PiB-PET imaging-related CSF α Syn analyses, linear regression was applied to predict regional PiB-retention as a function of CSF α Syn and EYO as independent variables, separately in ADAD mutation carriers and non-mutation carriers. The same linear regression model was applied after mutation carriers were stratified into asymptomatic (CDR < 0.5) and symptomatic (CDR ≥ 0.5) mutation carriers, as well as for the subset of PiB-positive asymptomatic mutation carriers. Additionally, in mutation carriers the interaction of α Syn and *APOE ϵ 4* status (positive/negative) was investigated to elucidate whether the relationship of regional PiB retention and α Syn is influenced by *APOE ϵ 4* status. Finally, regional PiB retention was modeled as a function of α Syn and EYO separately in *APOE ϵ 4*-positive and *APOE ϵ 4*-negative mutation carriers.

All statistical analyses concerning CSF α Syn levels and their association to parameters unrelated to brain imaging were performed in JMP software v.12.1.0 (SAS Institute Inc.). Statistical analyses regarding associations between CSF α Syn and amyloid PET data in the DIAN cohort were performed using the R v.3.1.0 software (The R Foundation for

Statistical Computing, <http://www.r-project.org/>). Graphical representations of significant linear associations were obtained with the ggplot2 package v.1.0.1, as implemented in R. The significance level for all statistical tests and models was set at $p \leq 0.05$. On the brain volumes, display of regression standardized β coefficients of the significant associations between CSF α Syn and regional PiB-PET were performed using BrainNet viewer [67] (<http://www.nitrc.org/projects/bnv/>) implemented in MATLAB.

Results

Descriptive statistics of the longitudinally followed cohort of sporadic patients

The demographics and clinical characteristics of the longitudinal cohort were in part previously published [45] and are shown in Table 1. The control group was significantly older than the MCI and AD patient groups, thus age was added as a covariate when including control subjects in the statistical analyses. At the two-year follow-up 48% of the subjects diagnosed with MCI at

baseline had progressed to an AD diagnosis (MCI-AD), whereas 52% remained stable (MCI-MCI). The patient dropout rate at 24-months was 17% of the MCI-MCI patients, 7% of the MCI-AD patients, and 15% of the AD patients. As expected, the Mini-Mental State Examination (MMSE) scores differed significantly amongst the investigated groups with AD patients displaying the lowest scores ($p < 0.001$). In comparison to controls all individual patient groups exhibited altered levels of CSF AD biomarkers including $A\beta_{1-42}$, $A\beta_{1-40}$, $A\beta_{42/40}$, t-tau and p-tau. A much lower frequency of *APOE* $\epsilon 4$ carriers was observed in the control group (38%) compared to the MCI (66%) and AD patient groups (82%) ($p < 0.001$).

Higher baseline CSF α Syn levels in MCI patients converting to sporadic AD

We first sought to compare CSF α Syn levels between the diagnostic groups. At baseline, MCI patients that after 24 months fulfilled the criteria for an AD diagnosis

Table 1 Longitudinal cohort baseline characteristics

	Controls	MCI			Alzheimer's disease	p-value ^c
		All	MCI-MCI	MCI-AD		
N	57	54	27	27	27	
Sex (% f/m)	65/35	53/47	44/56	59/41	52/48	- ^d
Age at examination (yrs) ^a	68 ± 5	65 ± 6	66 ± 6	64 ± 4	64 ± 6	** ^e
MMSE ^b	30 (28–30)	28 (23–30)	28 (25–30)	27 (23–29)	23 (16–27)	*** ^f
<i>APOE</i> $\epsilon 4$ carrier (%)	38 (n = 55)	66	63	74	81	*** ^d
CSF	969.7	546.5	574.3	539.0	476.8	*** ^f
$A\beta_{1-42}$ (pg/mL) ^b	(500–1674) (n = 45)	(173–1269)	(173–1269)	(283–1060)	(212–1092)	
CSF	17.1	13.5	12.9	14.2	14.9	** ^f
$A\beta_{1-40}$ (ng/mL) ^b	(11–41) (n = 41)	(4–31)	(4–31) (n = 26)	(8–23) (n = 23)	(7–29) (n = 26)	
CSF	0.059	0.042	0.049	0.039	0.034	*** ^f
$A\beta_{42/40}$ ^b	(0.013–0.096) (n = 41)	(0.008–0.118)	(0.008–0.118) (n = 26)	(0.012–0.088) (n = 23)	(0.007–0.080) (n = 26)	
CSF	269.0	447.9	315.2	550.8	624.2	*** ^f
t-tau (pg/mL) ^b	(138–1314) (n = 46)	(99–2325)	(99–1057)	(163–2325)	(177–1540)	
CSF	53.5	69.9	53.0	85.6	90.8	*** ^f
p-tau (pg/mL) ^b	(33–135) (n = 46)	(16–169)	(16–131)	(37–169)	(28–157)	

MCI = mild cognitive impairment MCI-MCI = MCI patients who remained MCI at the 24-month follow up

MCI-AD = MCI patients who converted to Alzheimer's disease at the 24-month follow up

MMSE = Mini-Mental State Examination score

a = mean ± standard deviation b = median (minimum-maximum)

c = P-value reflecting potential differences between the groups Controls, mild cognitive impairment and Alzheimer's disease d = χ^2 test e = one-way ANOVA

f = Kruskal-Wallis test - = non-significant

** = $p \leq 0.01$ *** = $p \leq 0.001$

(MCI-AD) exhibited the highest CSF α Syn levels compared to controls (Fig. 1a), while CSF α Syn levels did not significantly differ between controls and the non-converting MCI patients (MCI-MCI), and the AD group (Fig. 1a). No differences in CSF α Syn levels were noted between the patient groups at either the 12-month (Fig. 1b) or 24-month (Fig. 1c) follow-ups.

Association between *APOE ϵ 4* and higher CSF α Syn levels in sporadic AD patients

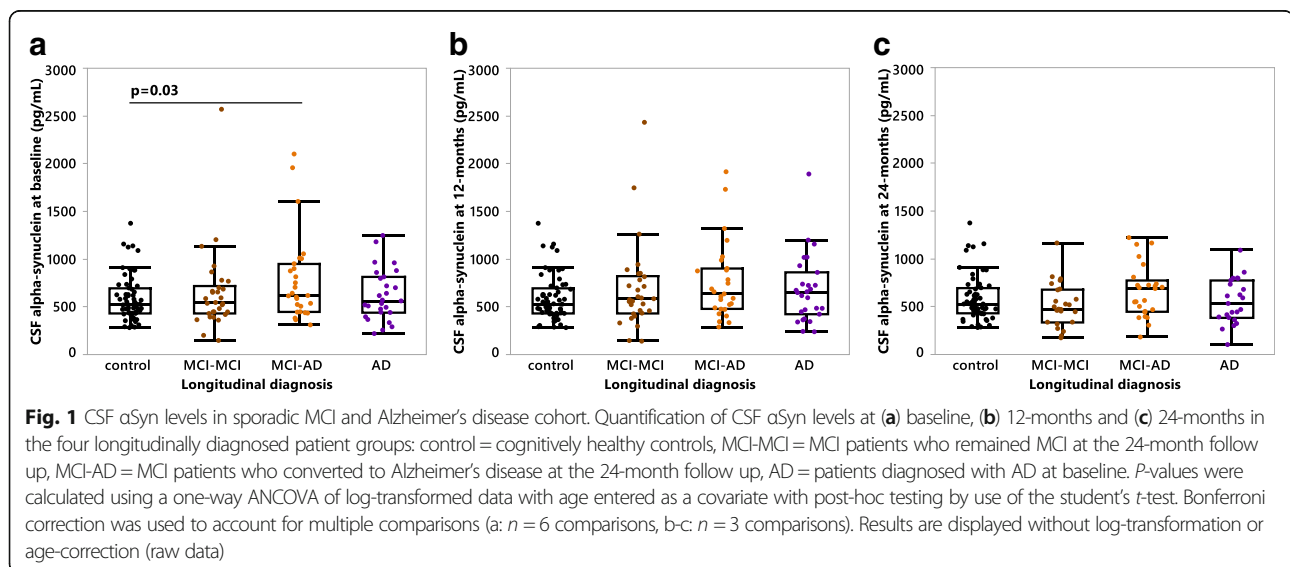
As *APOE ϵ 4* is a common genetic risk factor for both synucleinopathies and AD [7, 10, 30], we assessed the effect of *APOE ϵ 4* on CSF α Syn levels. Within the MCI patient group *APOE ϵ 4* carriers exhibited higher α Syn levels compared to non-carriers at the 24-month follow up (Fig. 2c). Additionally, MCI-AD *APOE ϵ 4* carriers exhibited higher CSF α Syn than non-carriers at the 12-month (Fig. 2e) and 24-month (Fig. 2f) follow-ups. The MCI-AD *APOE ϵ 4* carrying patient group also exhibited significantly higher CSF α Syn levels at baseline compared to *APOE ϵ 4* carrying MCI-MCI patients and controls (Fig. 3a), while no differences in CSF α Syn were found at the 12-month follow up (Fig. 3b). However, at 24-months MCI-AD *APOE ϵ 4* carriers again had higher CSF α Syn than MCI-MCI *APOE ϵ 4* carriers (Fig. 3c). This difference in CSF α Syn levels was absent when comparing *APOE ϵ 4* non-carrier patient groups at any time point (Fig. 3d-f). Intriguingly, the elevated CSF α Syn levels found in MCI-AD patients exhibited a dose-dependent relationship with the *APOE ϵ 4* allele at all three time points (Fig. 4a-c).

To assess any longitudinal changes in CSF α Syn levels occurring within- or between the patient groups we performed repeated measures MANOVAs spanning the intervals of: baseline to 12-months, baseline to 24-months, and 12-months to 24-months (Fig. 5). When all patients

(diagnosed with MCI or AD at baseline) were grouped as either *APOE ϵ 4* carriers or non-carriers, *APOE ϵ 4* carriers showed increasing CSF α Syn levels (+17%) from baseline to 12-months, followed by a decrease (-10%) from 12- to 24-months (Fig. 5a). Patients that did not carry the *APOE ϵ 4* variant consistently exhibited a longitudinal decline in CSF α Syn levels which reached statistical significance between the 12- and 24-months examinations (Fig. 5a), thus proposing potentially different pathological processes for *APOE ϵ 4* carriers versus non-carriers. These findings prompted us to also subdivide the MCI-AD patient group into *APOE ϵ 4* carriers or non-carriers. We found a significant increase in CSF α Syn (+5%) in MCI-AD *APOE ϵ 4* carriers from baseline to 12-months, while also observing elevated CSF α Syn in MCI-AD *APOE ϵ 4* carriers versus non-carriers from 12- to 24-months (Fig. 5b). Moreover, when the MCI-AD patient group was further subdivided by *APOE ϵ 4* zygosity we found significant differences in CSF α Syn levels from baseline to 12-months, and 12- to 24-months (Fig. 5c). A significant difference between *APOE ϵ 4* homozygotes, heterozygotes, and non-carriers was also found in the AD group between 12-months and 24-months (data not shown).

Links between CSF α Syn, AD biomarkers and cognition in sporadic patients

In the absence of established brain imaging tools to assess ante-mortem α Syn burden in the brain, we assessed potential correlations between CSF α Syn levels and established fluid surrogate markers of AD pathology and global cognitive test scores. At baseline, 12-months, and 24-months CSF α Syn showed a positive correlation to CSF $A\beta_{1-40}$, t-tau, and p-tau in all patient groups and controls (Table 2). All MCI patients showed a marked



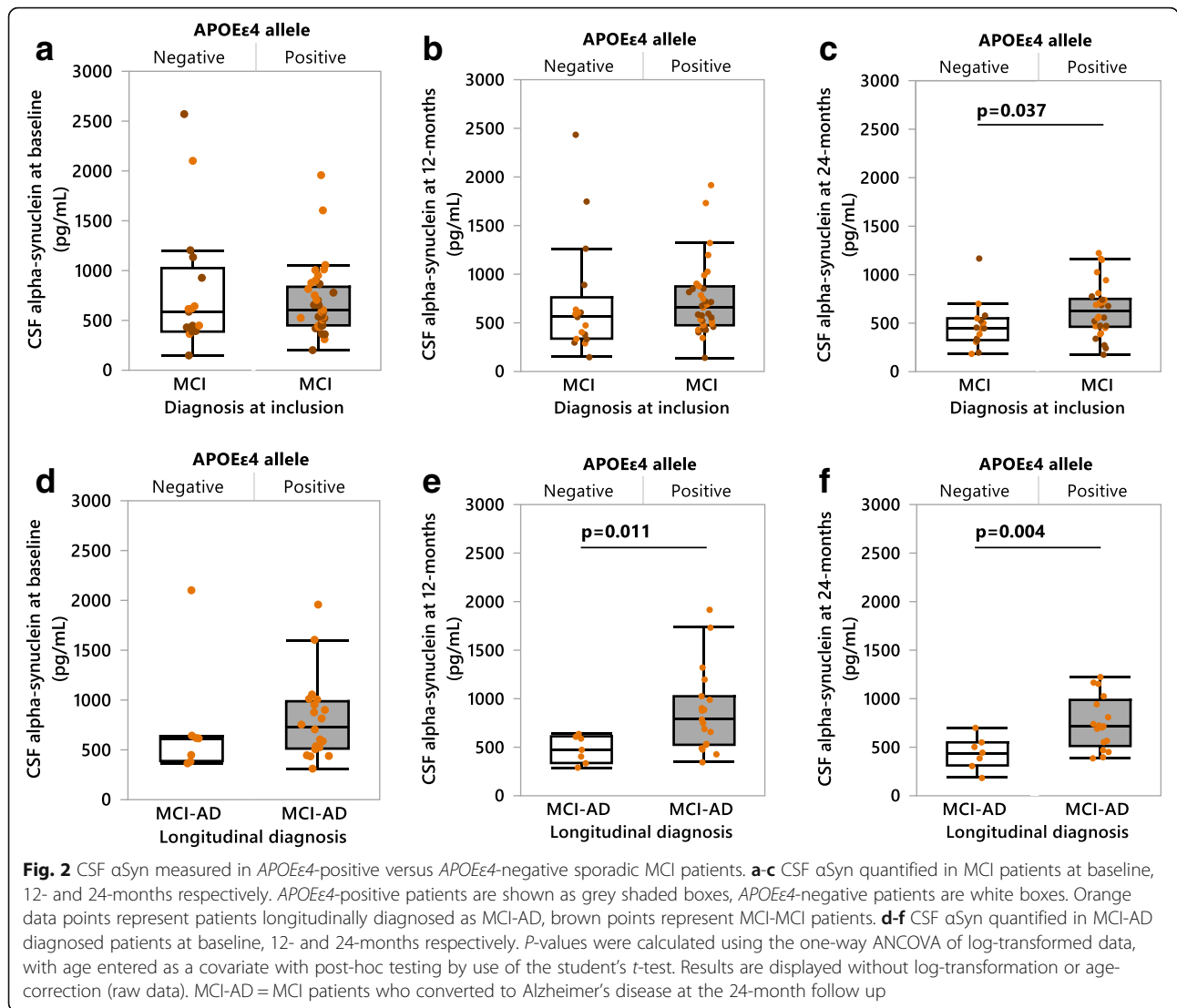


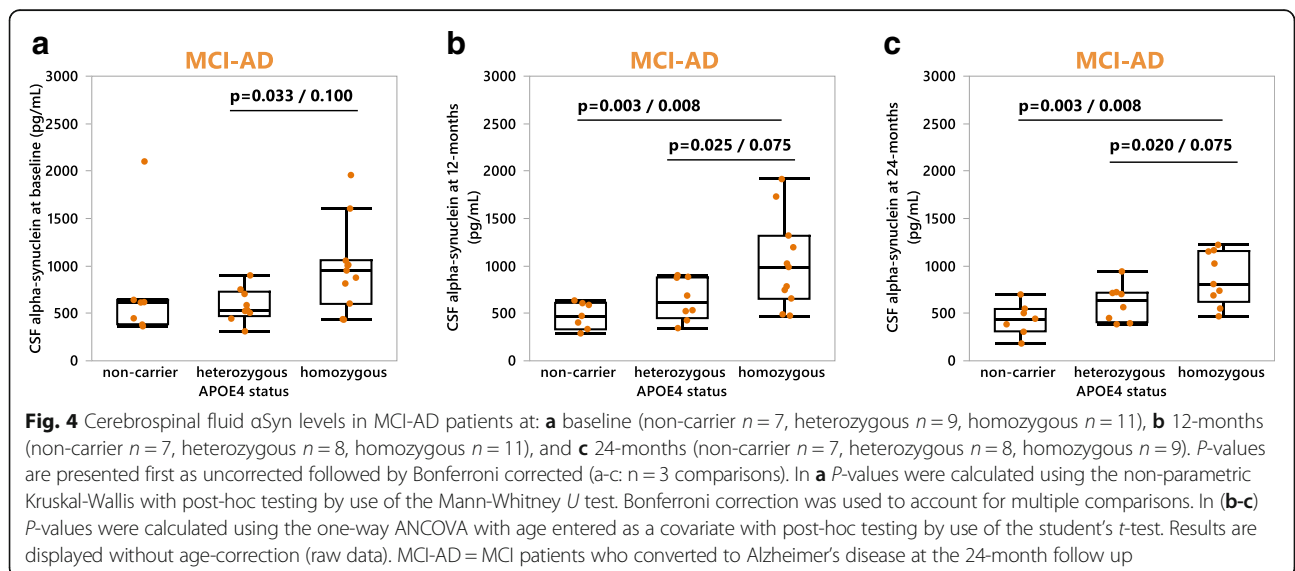
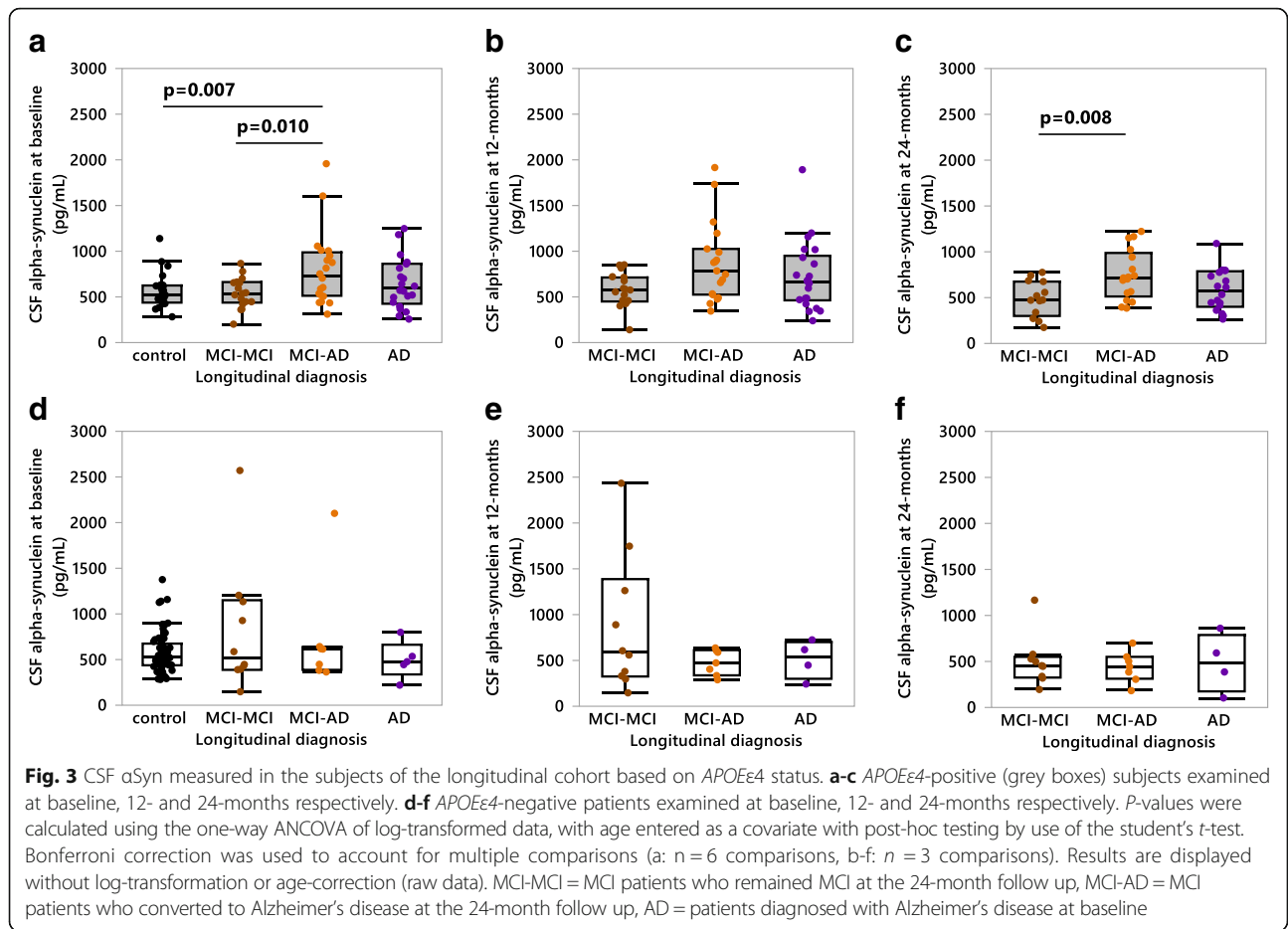
Fig. 2 CSF α Syn measured in *APOE4*-positive versus *APOE4*-negative sporadic MCI patients. **a-c** CSF α Syn quantified in MCI patients at baseline, 12- and 24-months respectively. *APOE4*-positive patients are shown as grey shaded boxes, *APOE4*-negative patients are white boxes. Orange data points represent patients longitudinally diagnosed as MCI-AD, brown points represent MCI-MCI patients. **d-f** CSF α Syn quantified in MCI-AD diagnosed patients at baseline, 12- and 24-months respectively. *P*-values were calculated using the one-way ANCOVA of log-transformed data, with age entered as a covariate with post-hoc testing by use of the student's *t*-test. Results are displayed without log-transformation or age-correction (raw data). MCI-AD = MCI patients who converted to Alzheimer's disease at the 24-month follow up

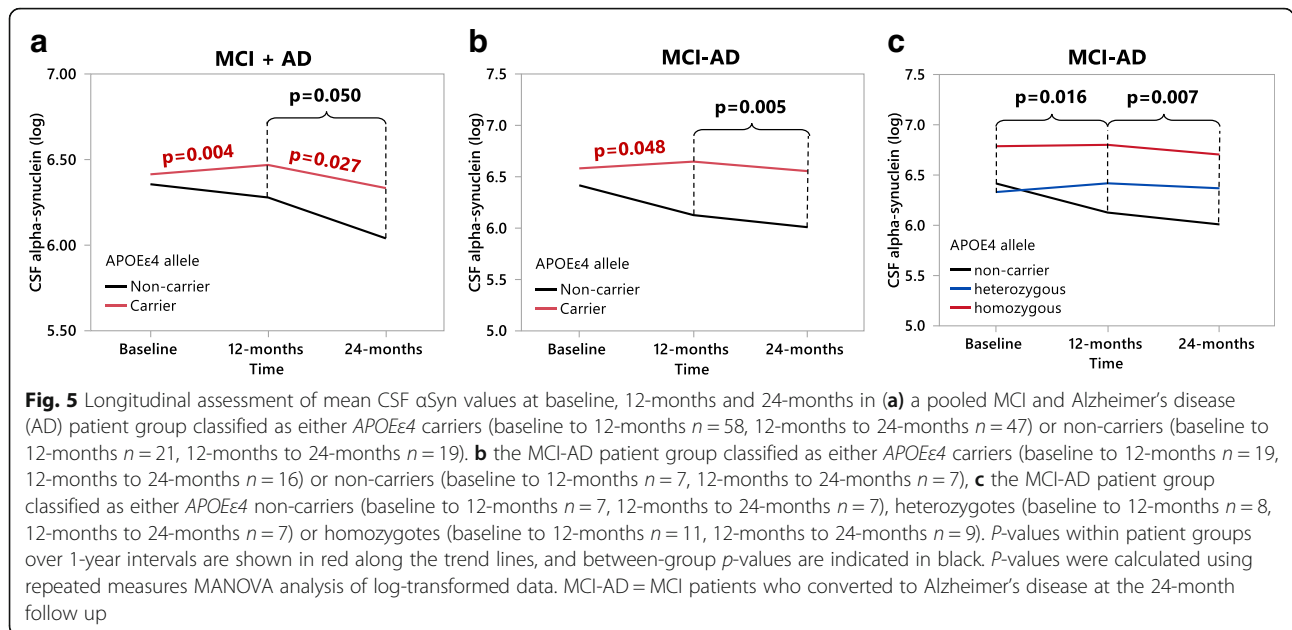
strengthening in the correlations of CSF α Syn to CSF $A\beta_{1-40}$, t-tau, and p-tau between baseline and 12-months, and were the strongest in the MCI-AD group compared to all other groups at 12-months (Table 2). In MCI-MCI patients the correlations of CSF α Syn to CSF $A\beta_{1-40}$ and p-tau strengthened from baseline to 24-months, while the MCI-AD group exhibited the strongest correlation between CSF α Syn and t-tau (all above Spearman's $\rho = 0.9$ respectively) (Table 2). The AD group exhibited a modest increase in the correlations between CSF α Syn and CSF t-tau and p-tau between baseline and 12-months, but showed weakening of the correlation between CSF α Syn and $A\beta_{1-40}$ over the same time interval. Additionally, at 24-months the AD group was the only group of patients at any time point to exhibit a significant correlation between CSF α Syn and $A\beta_{1-42}$. At 24-months however, the AD group exhibited the weakest correlations between CSF α Syn and the CSF AD biomarker panel. Intriguingly, our analyses revealed a

significant association between CSF α Syn levels and cognition, in which higher CSF α Syn levels were significantly correlated to lower MMSE scores in the MCI-AD group at baseline (Table 2); moreover, the correlation was solely attributable to *APOE4* carrying MCI-AD patients ($\rho = -0.607$, $p = 0.005$) (non-carrier $\rho = -0.618$, $p = 0.140$).

α Syn levels in sporadic patients with or without pathological CSF AD biomarkers

The MCI and AD patients enrolled in the longitudinal cohort were diagnosed according to clinical guidelines [34, 63] without workup of CSF AD biomarkers to support the clinical diagnosis, however, for research purposes the CSF biomarkers were assessed. With the rationale to compare CSF α Syn levels between patients with pathological versus without pathological CSF AD biomarker levels, we employed ROC analyses to produce cutoffs for the core CSF AD biomarkers $A\beta_{1-42}$, t-tau, p-tau and the





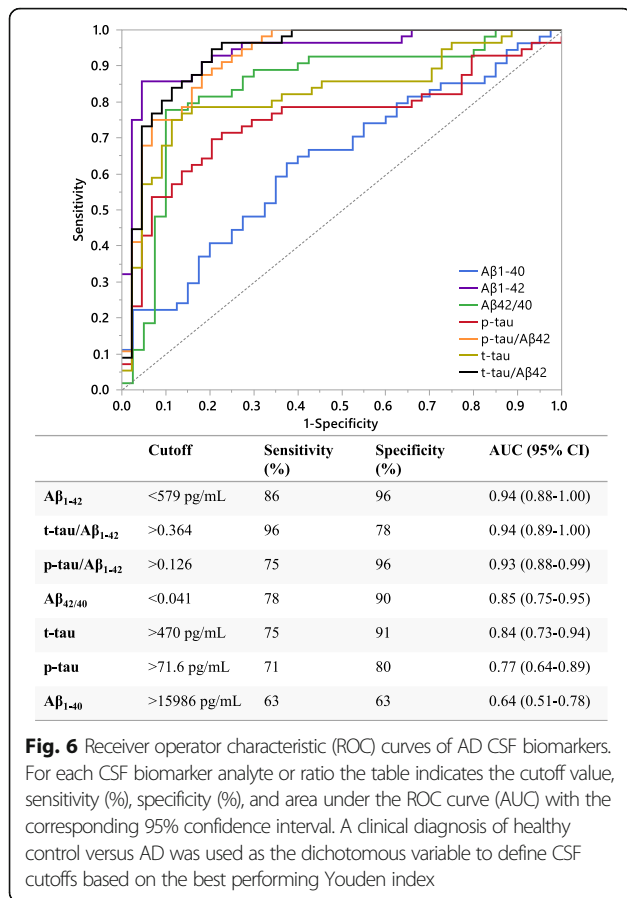
conventional ratios thereof [47]. We then stratified the patients into groups with and without pathological CSF AD biomarker levels (Fig. 6). Cutoffs were determined by comparing AD biomarker levels between cognitively healthy controls and AD patients at baseline. The resulting ROC axes were labeled as sensitivity and

1-specificity; the accompanying results table provided the individual cutoff values, sensitivity, specificity, and the area under the curve (AUC) with its respective 95% confidence interval (95% CI) (Fig. 6). The cutoff values (Fig. 6) for each CSF biomarker were then used to compare CSF α Syn levels between CSF AD biomarker negative (CSF(-))

Table 2 Longitudinal cohort CSF α Syn correlation analyses[‡]

Time	Longitudinal diagnosis	MMSE	CSF $A\beta_{1-42}$	CSF $A\beta_{1-40}$	CSF $A\beta_{42/40}$	CSF t-tau	CSF p-tau
Baseline	Control ($n=57$)	-	- ($n=41$)	0.616*** ($n=37$)	-0.542*** ($n=37$)	0.871*** ($n=42$)	0.766*** ($n=42$)
	MCI-MCI ($n=27$)	-	- ($n=26$)	0.472** ($n=26$)	- ($n=26$)	0.577*** ($n=26$)	0.651*** ($n=26$)
	MCI-AD ($n=27$)	-0.605***	- ($n=23$)	0.640*** ($n=23$)	-0.457* ($n=23$)	0.736*** ($n=23$)	0.694*** ($n=23$)
	AD ($n=27$)	-	- ($n=26$)	0.758*** ($n=26$)	- ($n=26$)	0.722*** ($n=26$)	0.738*** ($n=26$)
12-months	MCI-MCI ($n=27$)	-	- ($n=15$)	0.703*** ($n=15$)	-0.575* ($n=15$)	0.804*** ($n=15$)	0.849*** ($n=15$)
	MCI-AD ($n=25$)	-	- ($n=19$)	0.863*** ($n=18$)	-0.732*** ($n=18$)	0.913*** ($n=19$)	0.927*** ($n=19$)
	AD ($n=24$)	-	- ($n=18$)	0.691*** ($n=18$)	- ($n=18$)	0.804*** ($n=18$)	0.770*** ($n=18$)
24-months	MCI-MCI ($n=24$)	-	- ($n=14$)	0.925*** ($n=14$)	- ($n=14$)	0.782*** ($n=14$)	0.924*** ($n=14$)
	MCI-AD ($n=24$)	-	- ($n=18$)	0.716*** ($n=17$)	-0.556* ($n=17$)	0.902*** ($n=18$)	0.919*** ($n=18$)
	AD ($n=18$)	-	0.662** ($n=16$)	0.585* ($n=16$)	- ($n=16$)	0.741** ($n=16$)	0.650** ($n=16$)

[‡]All correlations calculated using the Spearman's rank correlation test
MCI-MCI= MCI patients who remained MCI at the 24-month follow up
MCI-AD= MCI patients who converted to Alzheimer's disease at the 24-month follow up
AD patients diagnosed with Alzheimer's disease at baseline, MMSE Mini-Mental State Examination score
* $p \leq 0.05$, ** $p \leq 0.01$, *** $p \leq 0.001$



and positive (CSF(+)) subjects within the diagnostic groups (Fig. 7). When utilizing the cutoffs for CSF t-tau (> 470 pg/mL) and p-tau (> 71.6 pg/mL) in the MCI and AD patients, we discovered significant differences where CSF(+) patients had elevated αSyn compared to CSF(-) patients (Fig. 7e-f). Additionally, the CSF p-tau/Aβ₄₂ cutoff (>0.126) applied in the AD patient group showed that the CSF(+) group had higher CSF αSyn than the CSF(-) group (Fig. 7c).

Descriptive statistics of DIAN participants

In the ADAD mutation carrying participants from the DIAN study, $n = 6$ *APP*, $n = 33$ *PSEN1* and $n = 3$ *PSEN2* mutations were represented (data not shown). Of the $n = 92$ included ADAD mutation carriers 34.8% had cognitive symptoms ($CDR \geq 0.5$). Specifically, 37.5% of *APP*, 42.0% of *PSEN1* and 11.1% of *PSEN2* mutation carriers were symptomatic (Table 3). More than half of the *PSEN2* mutation carriers carried the *APOEε4* allele, whereas a quarter of the *APP* mutation carriers and less than 20% of the *PSEN1* mutation carriers were *APOEε4* carriers (Table 3). In all three ADAD mutation groups, there was a higher percentage of *APOEε4* carriers amongst the symptomatic mutation carriers ($p < 0.01$). Further, we found significant variability in the EYO, MMSE and CDR scores, and CSF levels of Aβ₁₋₄₂,

Aβ_{42/40}, t-tau, and p-tau between ADAD mutation carriers and non-mutation carriers (Table 3). When the three ADAD mutation carrier groups were subdivided into symptomatic ($CDR \geq 0.5$) and asymptomatic ($CDR < 0.5$) individuals it was found that age of examination, EYO and MMSE scores as well as CSF Aβ_{42/40} and CSF levels of t-tau, and p-tau significantly differed between symptomatic versus asymptomatic in *APP* mutation carriers (Table 3). Age of examination, EYO, MMSE and CDR scores, CSF Aβ_{42/40}, Aβ₁₋₄₂, t-tau, and p-tau significantly differed between symptomatic and asymptomatic *PSEN1* mutation carriers, while no differences could be observed in the *PSEN2* mutation carriers due to insufficient sample size (Table 3).

Cerebrospinal fluid αSyn levels in ADAD mutation carriers are related to onset of cognitive symptoms

After pooling all individual gene mutations into their respective groups (*APP*, *PSEN1* and *PSEN2* mutation carriers) we compared the CSF αSyn levels between the three groups and found no significant differences between the groups of ADAD mutation carriers or versus non-mutation carriers (Fig. 8a). Upon subdividing the ADAD mutation carriers into either asymptomatic or symptomatic individuals we found that symptomatic mutation carriers had higher CSF αSyn compared to non-mutation carriers (Fig. 8b); no further differences were found when *APOEε4* status was included as a covariate (data not shown). Importantly, the temporal trajectory of CSF αSyn versus EYO showed a weak-to-moderate increase in both ADAD mutation carriers (Pearson's $R = 0.20$; $p = 0.056$) and in non-carriers (Pearson's $R = 0.31$; $p = 0.032$), where the confidence bands around both trajectories showed a substantial overlap (Fig. 8c).

Cerebrospinal fluid αSyn and AD biomarker associations in the DIAN cohort

To assess links between CSF αSyn levels and AD brain pathology using surrogate CSF AD biomarkers in the DIAN participants we investigated potential correlations between CSF αSyn and CSF levels of Aβ₁₋₄₂, Aβ₁₋₄₀, Aβ_{42/40}, t-tau, and p-tau in ADAD non-mutation carriers and the three ADAD mutation carrier groups sorted into asymptomatic and symptomatic subgroups (the $n = 2$ *PSEN1* symptomatic patient group was excluded from analysis) (Table 4). We found no correlations between CSF αSyn and Aβ₁₋₄₂ when combining asymptomatic and symptomatic ADAD mutation carriers, but did find a positive correlation between CSF αSyn and Aβ₁₋₄₀ in non-mutation carriers, and both asymptomatic and symptomatic *APP* and *PSEN1* mutation carriers. Inverse correlations between CSF αSyn and Aβ_{42/40} were found in symptomatic *APP* and *PSEN1* mutation carriers, but most notably in the symptomatic *APP* mutation carrier group (Table 4). There were strong positive associations between

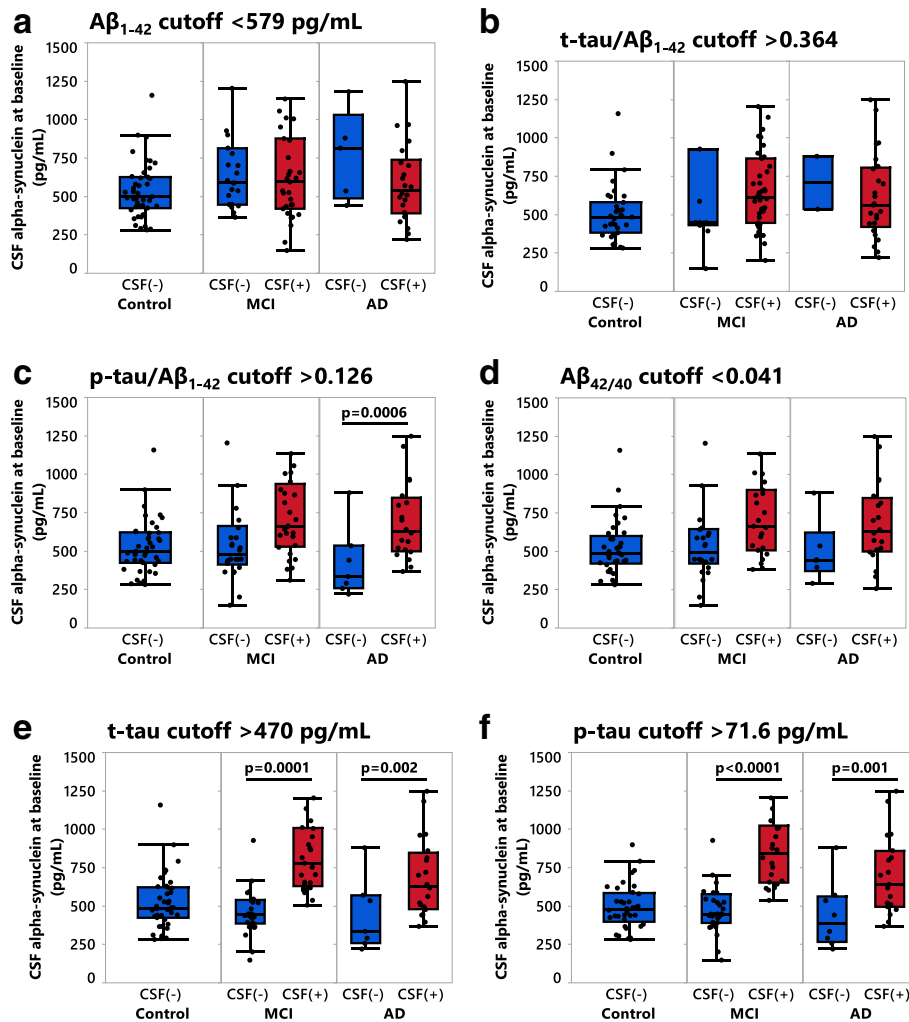


Fig. 7 Baseline levels of CSF α Syn in the longitudinal cohort based on ROC cutoff values. **a-f** Clinically diagnosed subjects subdivided into either CSF Alzheimer’s disease (AD) biomarker negative (CSF(-)) or positive (CSF(+)) groups based on cutoff values. *P*-values were calculated using the one-way ANCOVA of log-transformed data, with age entered as a covariate with post-hoc testing by use of the student’s *t*-test. Results are displayed without log-transformation

CSF α Syn and t-tau in ADAD non-mutation carriers and in all three mutation carrier groups, both asymptomatic and symptomatic, with the strongest correlations found in asymptomatic *PSEN1* and symptomatic *APP* mutation carriers (Table 4). Asymptomatic *PSEN1* mutation carriers also exhibited a significant positive relationship between CSF α Syn and p-tau while both non-mutation carriers and *PSEN2* mutation carriers demonstrated a significant positive correlation between CSF α Syn and p-tau levels.

Associations between brain $A\beta$ plaque load and CSF α Syn in the DIAN cohort

Data from PiB-PET examinations reflecting in vivo amyloid plaque burden were available for *n* = 132 of the DIAN participants (dataset freeze 10). The frequency of PiB-positive ((SUVR/brainstem) ≥ 0.72) subjects was; 49.1% (28/57) of

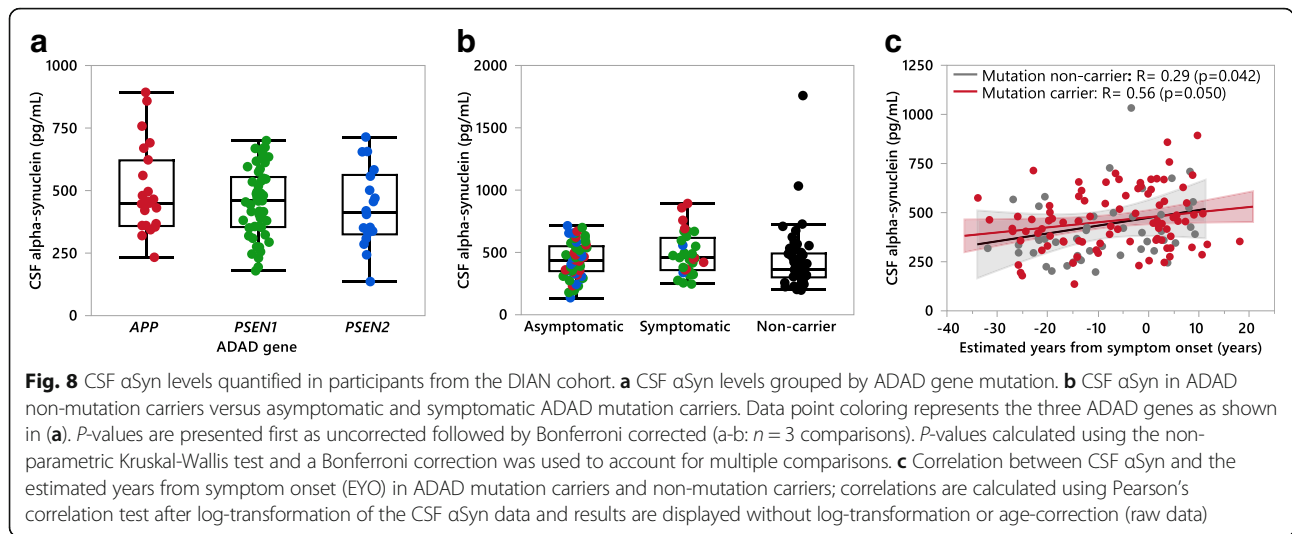
asymptomatic mutation carriers, 89.3% (25/28) of symptomatic mutation carriers, and 4.3% (2/47) of non-mutation carriers. As expected, PiB-retention increased with EYO in mutation carriers, while no significant increase was noted in non-mutation carriers (data not shown).

Potential associations between CSF α Syn levels and in vivo amyloid plaque burden in subjects from the DIAN cohort were investigated by analyzing the linear regressions of mean cortical PiB-retention versus CSF α Syn in ADAD mutation carriers and non-mutation carriers separately, as well as stratifying mutation carriers into asymptomatic and symptomatic groups, adding EYO as independent predictor in all regression models; these four models resulted in no significant associations between mean cortical PiB and α Syn (Table 5). When looking at the subset of PiB-positive asymptomatic ADAD

Table 3 DJAN cohort baseline characteristics

	Non-Mutation Carriers		APP Mutation Carriers		PSEN1 Mutation Carriers		PSEN2 Mutation Carriers		p-value ^a	
	All	Sym	All	Asym	All	Asym	All	Sym		
										All
N	50	92	24	15	9	50	29	21	16	2
Sex (% f/m)	56/44	55/45	63/37	67/33	56/44	60/40	52/48	71/29	32/68	50/50
Age at examination (yrs)	40 ± 11	40 ± 10	42 ± 11	39 ± 12	49 ± 6	39 ± 10	34 ± 9	46 ± 8	38 ± 9	57
EYO	-9 ± 11	-7 ± 12	5 ± 11	-11 ± 11	4 ± 3	-6 ± 12	-14 ± 10	5 ± 4	-15 ± 9	7
MMSE ^b	29 ± 1	27 ± 5	27 ± 5	29 ± 1	23 ± 7	26 ± 6	29 ± 1	21 ± 7	30 ± 1	20
CDR	0 ± 0	0.3 ± 0.6	0.3 ± 0.5	0 ± 0	1 ± 0.5	0.4 ± 0.7	0 ± 0	1 ± 0.8	0 ± 0	1
APOEε4 carrier (%)	36	27	25	20	33	18	14	24	50	100
CSF Aβ ₁₋₄₂ (pg/mL)	858 ± 264	613 ± 320 (n = 89)	613 ± 353 (n = 23)	734 ± 393 (n = 14)	425 ± 164	621 ± 335 (n = 49)	770 ± 318 (n = 28)	422 ± 243	596 ± 249 (n = 15)	565
CSF Aβ ₁₋₄₀ (pg/mL)	8173 ± 2751	7477 ± 3146 (n = 89)	6639 ± 3278 (n = 23)	6302 ± 3494 (n = 14)	7162 ± 3033	7563 ± 2785 (n = 49)	8313 ± 2918 (n = 28)	6563 ± 2300	8811 ± 3776 (n = 15)	5005
CSF Aβ _{42/40}	0.115 ± 0.045	0.092 ± 0.052 (n = 89)	0.106 ± 0.065 (n = 23)	0.128 ± 0.066 (n = 14)	0.072 ± 0.049	0.088 ± 0.048 (n = 49)	0.102 ± 0.047 (n = 28)	0.070 ± 0.045	0.076 ± 0.031 (n = 15)	0.129
CSF t-tau (pg/mL)	56 ± 26 (n = 49)	106 ± 73 (n = 87)	90 ± 64 (n = 23)	60 ± 30 (n = 14)	137 ± 76	124 ± 82 (n = 47)	94 ± 56 (n = 26)	162 ± 94	72 ± 40 (n = 15)	98
CSF p-tau (pg/mL)	29 ± 14 (n = 49)	54 ± 34 (n = 89)	46 ± 25 (n = 23)	32 ± 11 (n = 14)	69 ± 24	60 ± 37 (n = 49)	45 ± 28 (n = 28)	81 ± 38	48 ± 32 (n = 15)	29

Asym = asymptomatic Sym = symptomatic EYO = estimated years from symptom onset MMSE = Mini-Mental State Exam score
 CDR = Clinical Dementia Rating score a = p-value versus all mutation carriers c = Kruskal-Wallis test d = Mann-Whitney U test e = X² test f = non-normally distributed data presented at mean ± standard deviation in order to maintain patient anonymity
 - = non-significant * = p ≤ 0.05 ** = p ≤ 0.01 *** = p ≤ 0.001



mutation carriers, however, the same linear regression model showed a significant positive association between mean cortical PiB and α Syn ($\beta = 0.44, p = 0.010$); results from exploratory linear regression models in 42 regions of interest in PiB-positive asymptomatic mutation carriers are illustrated in Fig. 9a in which the regional regression β coefficients are displayed on a 3D brain surface. The strongest associations between CSF α Syn and amyloid plaque load in PiB-positive asymptomatic ADAD mutation carriers were found in regions including the posterior cingulate, superior temporal and frontal (Fig. 9a).

A potential effect of *APOE ϵ 4* on the association between PiB and α Syn in ADAD mutation carriers was assessed by the linear regression model: Mean cortical PiB $\sim \alpha$ Syn + *APOE ϵ 4* + EYO + α Syn**APOE ϵ 4*, and results are presented on Table 5. The interaction of α Syn**APOE ϵ 4* was significant, indicating that the relationship between PiB-retention and α Syn is different in *APOE ϵ 4*-positive than in *APOE ϵ 4*-negative ADAD mutation carriers. In *APOE ϵ 4*-positive ADAD mutation carriers, there was a strong positive association between α Syn and mean cortical PiB ($\beta = 0.39, p = 0.032$) (Table 5), while this association was not significant in

APOE ϵ 4-negative mutation carriers ($\beta = -0.10, p = 0.348$) (data not shown). Exploratory positive associations between α Syn and regional PiB in *APOE ϵ 4*-positive ADAD mutation carriers in the 42 regions of interest are illustrated on the 3D brain display, showing strong associations in regions including the superior temporal, anterior and posterior cingulate, parietal and frontal regions (Fig. 9b). The CSF α Syn-*APOE ϵ 4*-PiB relationship was specific and could not be replicated by replacing CSF α Syn with CSF t-tau levels (data not shown).

The positive significant associations between CSF α Syn and regional amyloid plaque load in PiB-positive asymptomatic ADAD mutation carriers are illustrated in Fig. 10 in regions of early amyloid plaque deposition within the frontal and temporal lobes (Fig. 10a-b), contrasting with respective negative associations observed in few regions in the symptomatic mutation carriers, mostly restricted to areas of late amyloid plaque deposition including paracentral and post-central regions (Fig. 10c-d).

Discussion

The role of α Syn in the context of AD pathophysiology is unknown. In this study we set out to investigate the

Table 4 DIAN cohort CSF α Syn correlation analyses^a

	Non- mutation carriers	<i>APP</i> mutation carriers		<i>PSEN1</i> mutation carriers		<i>PSEN2</i> mutation carriers	
		Asym (n = 15)	Sym (n = 9)	Asym (n = 29)	Sym (n = 21)	Asym (n = 16)	Sym (n = 2)
CSF $A\beta_{1-42}$	0.595***	-	-	-	-	-	□
CSF $A\beta_{1-40}$	0.744***	0.610*	0.717*	0.526**	0.788***	-	□
CSF $A\beta_{42/40}$	-	-	-0.800**	-	-0.464*	-	□
CSF t-tau	0.716***	0.676*	0.917***	0.943***	0.664***	0.736**	□
CSF p-tau	0.544***	-	-	0.809***	0.662***	-	□

^a = All correlations calculated using the Spearman's rank correlation test

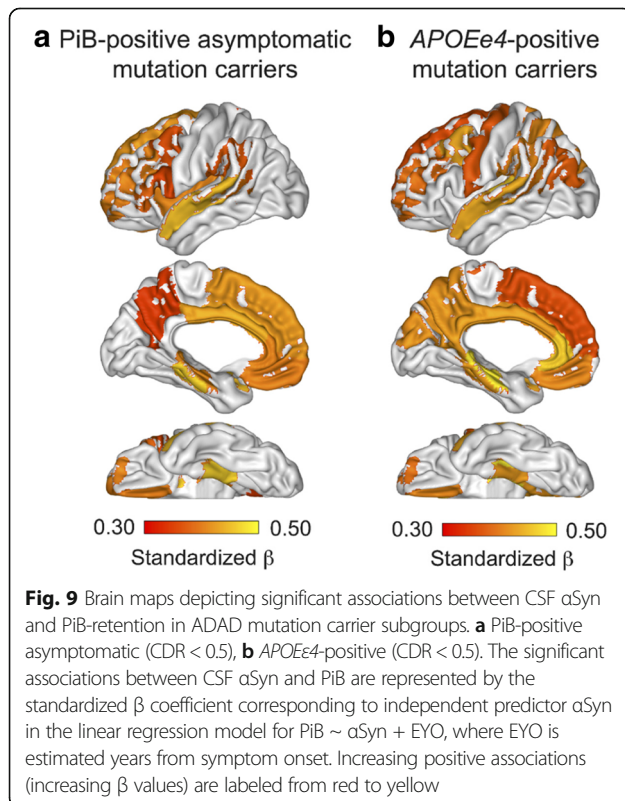
Asym = asymptomatic Sym = symptomatic

□ = not determined * = $p \leq 0.05$ ** = $p \leq 0.01$ *** = $p \leq 0.001$

Table 5 Linear regression models relating mean cortical ¹¹C-Pittsburgh Compound-B uptake and αSyn in ADAD mutation carriers

Model (PiB-positive asymptomatic mutation carriers): Mean cortical PiB ~ αSyn + EYO				
Independent predictors	Standardized β	Std. Error	t value	p value
αSyn	0.375	0.00047	2.348	0.027
EYO	0.444	0.00676	2.780	0.010
Model (all mutation carriers): Mean cortical PiB ~ αSyn + APOEε4 + EYO + αSyn*APOEε4				
Independent predictors	Estimate	Std. Error	t value	p value
αSyn	-0.00038	0.00039	-0.970	0.335
APOEε4	-0.98698	0.44767	-2.205	0.030
EYO	0.02682	0.00435	6.164	0.000
αSyn*APOEε4	0.00244	0.00099	2.468	0.016
Model (APOEε4-positive mutation carriers): Mean cortical PiB ~ αSyn + EYO				
Independent predictors	Standardized β	Std. Error	t value	p value
αSyn	0.393	0.00088	2.321	0.032
EYO	0.533	0.00864	3.147	0.005

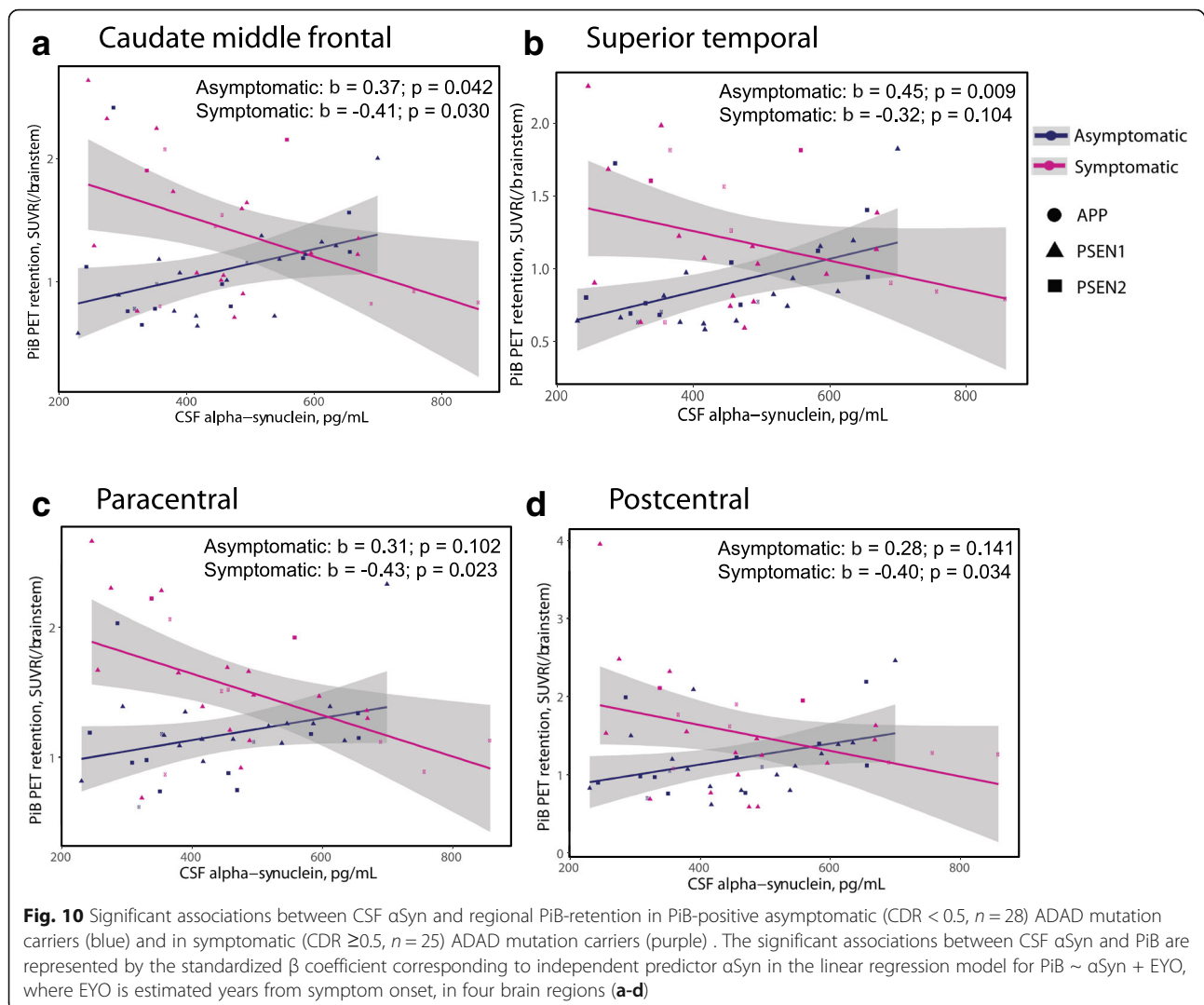
PiB = ¹¹C-Pittsburgh Compound-B EYO = estimated years from symptom onset



relevance of αSyn to both sporadic and familial AD by examining CSF levels of αSyn and potential associations to various AD disease parameters including cognition, CSF AD biomarkers, and in familial AD patients we also assessed potential relationships between CSF αSyn and brain amyloid plaque burden. Although the significance of CSF αSyn levels to brain parenchymal αSyn levels are still unknown, mainly due to the lack of ante-mortem αSyn brain imaging tools, we anticipate that CSF αSyn fluctuations mirror αSyn alterations in the brain. We studied subjects with MCI, sporadic AD and ADAD in order to pinpoint any potential pre-clinical, prodromal, or mid- to late stage disease pathways linking αSyn to AD pathogenesis. We further explored the impact of the AD risk allele APOEε4 on the identified associations.

Numerous studies have reported αSyn pathology in approximately 50–60% of autopsied AD patients [1, 16, 31]. Patients with mixed pathologies as well as animal models expressing combined AD and αSyn pathologies tend to exhibit amplified deterioration, typically enduring more severe symptoms and shorter survival rates [9, 41]. Interestingly, Wirths and colleagues described co-accumulation of αSyn in Aβ plaques and dystrophic neurites only in patients with the Lewy body variant of AD rather than in ‘typical AD’ cases [65]. Furthermore, results from another study of 147 neuropathologically confirmed AD cases suggested that the majority of AD patients who exhibited very few or no neocortical neurofibrillary tangles, termed ‘plaque-only AD’, exhibited Lewy body αSyn pathology, while patients with the Lewy body variant of AD were found to be ‘plaque-only AD’ cases, hence, ‘plaque-only AD’ and Lewy body variant AD were diagnostically indistinguishable from one another [17]. Currently, the mechanisms driving comorbid αSyn and AD pathologies have yet to be elucidated making it impossible to predict comorbidity or to diagnose patients ante-mortem, however, we speculate that altered CSF αSyn may be a predictive feature of AD patients that already are harboring or that will develop αSyn co-pathology.

The identification of a molecular interaction between presenilin 1 (PS1), encoded by the *PSEN1* gene, and αSyn was suggested to in part explain the clinical and pathophysiological overlaps between AD and synucleinopathies like DLB [64]. The relevance of this molecular interaction was illustrated by two previous reports demonstrating a strong association between ADAD-causing *PSEN1* mutations and Lewy body pathology specifically in the amygdala [29, 31]. With a direct interaction between αSyn and PS1, the latter of which is a key player in Aβ peptide production [8], it is tempting to speculate that αSyn may have a modulatory role in Aβ production and/or deposition. In support, our current study revealed an association between higher CSF αSyn levels and amyloid plaque burden in several brain areas of PiB-positive asymptomatic ADAD mutation carriers.



The brain regions exhibiting the highest rates of annual $A\beta$ accumulation in PiB-negative (< 0.87 SUVR) individuals with pathological CSF $A\beta_{1-42}$ levels (< 192 ng/L), termed as ‘early $A\beta$ accumulators’ by Palmqvist and colleagues in a recent publication [44], exhibited a striking overlap with the brain regions for which we found significant positive correlations between CSF α Syn and PiB-retention. Similarly, a recent study of cognitively normal individuals with subjective memory complaints documented a positive association between CSF α Syn concentrations and brain $A\beta$ deposition [59]. Rather surprisingly, our identified relationship between CSF α Syn levels and $A\beta$ deposition in presymptomatic ADAD patients was not paralleled by any significant correlations between CSF α Syn and $A\beta_{1-42}$ levels. Instead, CSF α Syn levels were consistently positively associated with CSF $A\beta_{1-40}$ levels across all studied groups. The relevance of CSF $A\beta_{1-40}$ in the presymptomatic stage of AD, during which $A\beta$ deposition occurs, remains to be determined.

In support of our own results [61, 62] and those reported by other groups [60] we further identified strong positive correlations between CSF α Syn and CSF t-tau and p-tau in both studied cohorts. By stratifying the studied sporadic MCI and AD patients based on pathological CSF AD biomarker levels, we found elevated CSF α Syn levels in patients that exhibited pathological CSF tau but not $A\beta$ levels. Similar to CSF levels of tau, CSF α Syn levels were previously proposed to potentially function as a marker of synapse loss and neurodegeneration [43], however the lack of significantly altered levels of CSF α Syn in AD does not support this notion. A direct link between α Syn and tau pathology was instead suggested by findings showing that α Syn promotes GSK-3 β -mediated tau phosphorylation [25]. The authors of the same study further demonstrated that α Syn directly interacted with both tau and GSK-3 β . Another in vitro study employing rat PC12 cells demonstrated that extracellular α Syn in fact was involved in GSK-3 β -mediated hyperphosphorylation of tau [15]. In

cognitively intact control subjects we found strong positive correlations between levels of CSF α Syn and both t-tau and p-tau, which in our view may challenge the notion that the relationship between α Syn and tau is indeed pathological. Due to our findings of a consistent correlation between CSF α Syn and tau levels across diagnostic groups including healthy controls, we speculate that the this association might be due to non-conventional exosome-related release mechanisms [12, 51] for both tau and α Syn, without any clear disease association. The exact relevance of the described seemingly robust relationship between levels of CSF tau and α Syn requires clarification, preferably in future studies assessing potential links between CSF α Syn and ante-mortem tau pathology using novel tau tracers and imaging techniques [50].

With the *APOE ϵ 4* allele as a common denominator in terms of risk of disease for both AD and DLB [7] we were interested in assessing potential effects of this gene variant on CSF α Syn levels in the investigated cohorts. In subjects from the MCI-AD diagnostic group who exhibited elevated CSF α Syn levels compared to controls at baseline, homozygous *APOE ϵ 4* carriers exhibited the highest CSF α Syn levels. This observation was absent in AD patients and control subjects. Hence, we observed an effect of the *APOE ϵ 4* variant on CSF α Syn levels in the prodromal phase of sporadic AD, but no effect once patients were clinically diagnosed with AD. When considering any effect of the *APOE ϵ 4* allele in ADAD mutation carrying DIAN participants, we found no differences in CSF α Syn between *APOE ϵ 4* positive versus *APOE ϵ 4* negative participants, or within the *APP*, *PSEN1* or *PSEN2* mutation carrying groups. However, presymptomatic A β deposition in ADAD mutation carriers was positively associated with CSF α Syn levels only in *APOE ϵ 4* positive subjects. We hypothesize that an association between CSF α Syn and A β deposition at the presymptomatic stage of AD may be further supported by the *APOE ϵ 4* variant which in previous studies has been shown to promote A β deposition even in cognitively intact individuals [40].

The regulatory mechanisms governing α Syn levels in brain parenchyma and CSF are unknown. However, there is a clear difference between CSF α Syn levels in AD patients and those with synucleinopathies, where patients afflicted with the latter disorders consistently exhibit reduced levels [18, 24, 38, 39, 56, 57] suggesting a disease-specific process that disrupts the balance between the intracellular and extracellular pools of α Syn. Kallikrein-6, also called neurosin, is one of few reported extracellular proteases shown to cleave α Syn [52, 55]. Increasing the expression of kallikrein-6 in the brains of a mouse model of Lewy body disease promoted α Syn clearance and reduced α Syn pathology [52]. Further, we have shown that patients with synucleinopathies not only exhibited low CSF α Syn levels but also reduced

levels of kallikrein-6 [62]. Thus, our previous results combined with those from animal studies suggest that an imbalance between α Syn and kallikrein-6 may promote synucleinopathy. Recently we also reported that the AD and MCI-AD patients examined in the current study did not exhibit altered levels of CSF kallikrein-6 compared to controls, whereas MCI-MCI patients had slightly lower CSF kallikrein-6 levels compared to controls [45]. Hence, the elevated CSF α Syn levels observed in the MCI-AD group were not paralleled by increased kallikrein-6 levels suggesting a potential imbalance between kallikrein-6 and α Syn in this group.

We conclude, CSF α Syn levels alone appear unfit to serve as a diagnostic marker for AD however higher CSF α Syn concentrations were associated with the progression from MCI to sporadic AD, and with the development of symptoms in subjects carrying ADAD mutations. Although not paralleled by significant correlations with CSF A β _{1–42}, higher levels of CSF α Syn in the presymptomatic stages of ADAD were associated with A β plaque burden in several brain regions known to accumulate A β pathology during early stages of AD development. The presence of an *APOE ϵ 4* allele in sporadic AD cases appeared to promote higher CSF α Syn levels which may accelerate the processes linking α Syn to A β deposition in AD. The *APOE ϵ 4* allele may be involved in molecular processes governing CSF α Syn levels, which in turn appear associated with the presymptomatic build-up of A β plaque burden in the brain during AD development. Future studies assessing α Syn in paired CSF and autopsied brain tissues are needed in order to decipher the relevance of altered CSF α Syn levels in the pathophysiology of AD.

Abbreviations

3T-MRI: 3-Tesla magnetic resonance imaging; AD: Alzheimer's disease; ADAD: Early-onset autosomal dominant Alzheimer's disease; ADNI: Alzheimer's Disease Neuroimaging Initiative; *APOE ϵ 4*: Apolipoprotein E epsilon 4; *APP*: Amyloid precursor protein gene; AUC: Area under the curve; A β _{1–40}: Amyloid- β _{1–40}; A β _{1–42}: Amyloid- β _{1–42}; A β _{42/40}: Amyloid- β _{1–42/1–40} ratio; CSF: Cerebrospinal fluid; DIAN: Dominantly Inherited Alzheimer's Network; ELISA: Enzyme-linked immunosorbent assay; EYO: Estimated years from symptom onset; FDG: Fluorodeoxyglucose; MCI: Mild cognitive impairment; MCI-AD: MCI patients who converted to Alzheimer's disease at the 24-month follow up; MCI-MCI: MCI patients who remained MCI at the 24-month follow up; MMSE: Mini Mental State Examination score; MPRAGE: Magnetization-prepared 180 degrees radio-frequency pulses and rapid gradient-echo sampling; PET: Positron emission tomography; PIB: ¹¹C-Pittsburgh Compound-B; PS1: Presenilin 1 protein; *PSEN1*: Presenilin 1 gene; *PSEN2*: Presenilin 2 gene; p-tau: Phosphorylated tau; ROC: Receiver operating characteristic; SUVR: Standardized Uptake Value Ratio; t-tau: Total tau

Acknowledgements

This manuscript has been reviewed by DIAN Study investigators for scientific content and consistency of data interpretation with previous DIAN Study publications. We acknowledge the altruism of the participants and their families and contributions of the DIAN research and support staff at each of the participating sites for their contributions to this study. The authors further would like to acknowledge the generous participation of the study subjects included in the sporadic cohort as well as all the clinical and laboratory staff involved.

Funding

Data collection and sharing for this project was supported by The Dominantly Inherited Alzheimer's Network (DIAN, NIH project U19AG032438, RJB) funded by the National Institute on Aging (NIA), the German Center for Neurodegenerative Diseases (DZNE), Raul Carrea Institute for Neurological Research (FLENI), Partial support by the Research and Development Grants for Dementia from Japan Agency for Medical Research and Development, AMED, and the Korea Health Technology R&D Project through the Korea Health Industry Development Institute (KHIDI). The current study was supported by grants from the Swedish Dementia Foundation (Demensfonden, HMN), the Alzheimer's Association (2015-NIRG-339824, HMN), Stiftelsen Olle Engkvist Byggmästare (184–333, HMN) and a VINNMER and Marie Curie Fellowship (2015–04905, HMN).

Availability of data and materials

Longitudinal cohort: The datasets used and/or analysed during the current study available from the corresponding author on reasonable request. DIAN cohort: The data that support the findings of this study are available from The Dominantly Inherited Alzheimer's Network but restrictions apply to the availability of these data, which were used with permission for the current study, and so are not publicly available. Data are however available from the authors upon reasonable request and with permission of The Dominantly Inherited Alzheimer's Network.

Authors' contributions

HMN conceived of the idea for the study. DT drafted the manuscript. HMN and DT quantified and statistically analyzed all CSF α Syn levels and correlations. HMN, KP and DT interpreted the non-neuroimaging data. AN and ERV analyzed and interpreted all DIAN PET imaging data. SBS and GRG performed the clinical assessments of subjects from the longitudinal cohort. SBS, GBe, GRG, CL, IM, GRG, GBr and LRW contributed to clinical data acquisition, including the CSF biomarker profiles for the longitudinal cohort. TLSB, CMK, AF, JCM and RJB contributed to DIAN participant enrollment and collection of the DIAN data provided for the current study. DT, ERV, SBS, GB, CL, IM, GRG, GBe, KP, GB, TLSB, CML, AF, JCM, RJB, AN, LRW and HMN provided critical input and revision of the manuscript for intellectual content. All authors have approved of the content of the final manuscript.

Ethics approval and consent to participate

Research aims pursued in the longitudinal cohort were approved by the regional ethics committee in Trondheim, Norway (2010/226) and Stockholm, Sweden (2016/771–31/4). The described studies relating to the DIAN cohort were approved by the local ethics committee in Stockholm, Sweden (2016/2114–31/4). The studies of both cohorts were carried out in agreement with the Helsinki Declaration.

Consent for publication

Not applicable.

Competing interests

The authors declare that they have no competing interests.

Publisher's Note

Springer Nature remains neutral with regard to jurisdictional claims in published maps and institutional affiliations.

Author details

¹Department of Biochemistry and Biophysics, Stockholm University, Svante Arrhenius väg 16B, 106 91 Stockholm, Sweden. ²Department of Neurobiology, Care Sciences and Society, Karolinska Institutet, Stockholm, Sweden. ³Department of Neurology, University Hospital of Trondheim, Trondheim, Norway. ⁴Department of Neuroscience, Norwegian University of Science and Technology, Trondheim, Norway. ⁵Department of Neuroscience, Mayo Clinic College of Medicine, Jacksonville, FL, USA. ⁶Department of Radiology, Washington University School of Medicine, St Louis, MO, USA. ⁷Department of Psychiatry, Washington University School of Medicine, St Louis, MO, USA. ⁸Department of Neurology, Washington University School of Medicine, St Louis, MO, USA. ⁹The Aging Research Center, Karolinska University Hospital, Stockholm, Sweden.

Received: 23 October 2018 Accepted: 28 October 2018

Published online: 26 November 2018

References

- Arai Y, Yamazaki M, Mori O, Muramatsu H, Asano G, Katayama Y (2001) α -Synuclein-positive structures in cases with sporadic Alzheimer's disease: morphology and its relationship to tau aggregation. *Brain Res* 888:287–296 Elsevier
- Bachhuber T, Katzmarski N, McCarter JF, Loret D, Tahirovic S, Kamp F et al (2015) Inhibition of amyloid- β plaque formation by α -synuclein. *Nat Med* 21: 802–807 Nature Publishing Group, a division of Macmillan Publishers Limited. All Rights Reserved
- Bateman RJ, Aisen PS, De Strooper B, Fox NC, Lemere CA, Ringman JM et al (2011) Autosomal-dominant Alzheimer's disease: a review and proposal for the prevention of Alzheimer's disease. *Alzheimers Res Ther* 3:1 BioMed Central
- Bateman RJ, Xiong C, Benzinger TLS, Fagan AM, Goate A, Fox NC et al (2012) Clinical and biomarker changes in dominantly inherited Alzheimer's disease. *N Engl J Med* 367:795–804 Massachusetts Medical Society
- Berge G, Lauridsen C, Sando SB, Holder DJ, Møller I, Aasly JO et al (2015) Effect of Tween-20 on Core biomarkers measured in cerebrospinal fluid from patients with Alzheimer's disease, mild cognitive impairment, or healthy control individuals. *J Alzheimer's Dis* 49:493–502 IOS Press
- Berge G, Sando SB, Albrektsen G, Lauridsen C, Møller I, Grøntvedt GR et al (2016) Alpha-synuclein measured in cerebrospinal fluid from patients with Alzheimer's disease, mild cognitive impairment, or healthy controls: a two year follow-up study. *BMC Neurol BioMed Central* 16:180
- Berge G, Sando SB, Rongve A, Aarsland D, White LR (2014) Apolipoprotein E ϵ 2 genotype delays onset of dementia with Lewy bodies in a Norwegian cohort. *J Neurol Neurosurg Psychiatry* 85:1227–1231 BMJ Publishing Group Ltd
- Chow VW, Mattson MP, Wong PC, Gleichmann M (2010) An overview of APP processing enzymes and products. *NeuroMolecular Med* 12:1–12 Humana Press Inc
- Clinton LK, Blurton-Jones M, Myczek K, Trojanowski JQ, LaFerla FM (2010) Synergistic interactions between Abeta, tau, and alpha-synuclein: acceleration of neuropathology and cognitive decline. *J Neurosci* 30:7281–7289
- Corder EH, Saunders AM, Strittmatter WJ, Schmechel DE, Gaskell PC, Small GW et al (1993) Gene dose of apolipoprotein E type 4 allele and the risk of Alzheimer's disease in late onset families. *Science* 261:921–923 American Association for the Advancement of Science
- Eisenstein SA, Koller JM, Piccirillo M, Kim A, Antenor-Dorsey JAV, Videen TO et al (2012) Characterization of extrastriatal D2 in vivo specific binding of [¹⁸F](N-methyl)benperidol using PET. *Synapse* 66:770–780 NIH Public Access
- Emmanouilidou E, Melachroinou K, Roumeliotis T, Garbis SD, Ntzouni M, Margaritis LH et al (2010) Cell-produced alpha-synuclein is secreted in a calcium-dependent manner by exosomes and impacts neuronal survival. *J Neurosci* 30:6838–6851 Society for Neuroscience
- Fagan AM, Mintun MA, Mach RH, Lee S-Y, Dence CS, Shah AR et al (2006) Inverse relation between in vivo amyloid imaging load and cerebrospinal fluid A β ₄₂ in humans. *Ann Neurol* 59:512–519 Wiley-Blackwell
- Fischl B, Salat DH, Busa E, Albert M, Dieterich M, Haselgrove C et al (2002) Whole brain segmentation: automated labeling of neuroanatomical structures in the human brain. *Neuron* 33:341–355
- Gąssowska M, Czapski GA, Pająk B, Cieślak M, Lenkiewicz AM, Adamczyk A. Extracellular α -Synuclein Leads to Microtubule Destabilization via GSK-3 β -Dependent Tau Phosphorylation in PC12 Cells. Paudel HK, editor. *PLoS One*. 2014;9:e94259 Public Library of Science
- Hamilton RL (2000) Lewy bodies in Alzheimer's disease: a neuropathological review of 145 cases using alpha-synuclein immunohistochemistry. *Brain Pathol* 10:378–384
- Hansen LA, Masliah E, Galasko D, Terry RD (1993) Plaque-only Alzheimer disease is usually the lewy body variant, and vice versa. *J Neuropathol Exp Neurol* 52:648–654
- Hong Z, Shi M, Chung KA, Quinn JF, Peskind ER, Galasko D et al (2010) DJ-1 and alpha-synuclein in human cerebrospinal fluid as biomarkers of Parkinson's disease. *Brain* 133:713–726 Oxford University Press
- Irwin DJ, Lee VM-Y, Trojanowski JQ (2013) Parkinson's disease dementia: convergence of α -synuclein, tau and amyloid- β pathologies. *Nat Rev Neurosci* NIH Public Access 14:626–636
- Iwai A, Masliah E, Yoshimoto M, Ge N, Flanagan L (1995) Rohan de Silva H, et al. the precursor protein of non-A β component of Alzheimer's disease amyloid is a presynaptic protein of the central nervous system. *Neuron* 14: 467–475

21. Jack CR, Bernstein MA, Borowski BJ, Gunter JL, Fox NC, Thompson PM et al (2010) Update on the magnetic resonance imaging core of the Alzheimer's disease neuroimaging initiative. *Alzheimers Dement* 6:212–220 NIH Public Access
22. Jack CR, Bernstein MA, Fox NC, Thompson P, Alexander G, Harvey D et al (2008) The Alzheimer's Disease Neuroimaging Initiative (ADNI): MRI methods. *J Magn Reson Imaging* 27:685–691 NIH Public Access
23. Kallhoff V, Peethumongsin E, Zheng H (2007) Lack of α -synuclein increases amyloid plaque accumulation in a transgenic mouse model of Alzheimer's disease. *Mol Neurodegener BioMed Central* 2:6
24. Kasuga K, Tokutake T, Ishikawa A, Uchiyama T, Tokuda T, Onodera O et al (2010) Differential levels of alpha-synuclein, beta-amyloid42 and tau in CSF between patients with dementia with Lewy bodies and Alzheimer's disease. *J Neurol Neurosurg Psychiatry* 81:608–610 BMJ Publishing Group Ltd
25. Kawakami F, Suzuki M, Shimada N, Kagiya G, Ohta E, Tamura K et al (2011) Stimulatory effect of α -synuclein on the tau-phosphorylation by GSK-3 β . *FEBS J* 278(10.1111):4895–4904 Wiley/Blackwell
26. Korff A, Liu C, Gingham C, Shi M, Zhang J (2013) α -Synuclein in cerebrospinal fluid of Alzheimer's disease and mild cognitive impairment. *J Alzheimer's Dis* 36:679–688 IOS Press
27. Larson ME, Greimel SJ, Amar F, LaCroix M, Boyle G, Sherman MA et al (2017) Selective lowering of synapsins induced by oligomeric α -synuclein exacerbates memory deficits. *Proc Natl Acad Sci* 114:E4648–E4657 National Academy of Sciences
28. Larson ME, Sherman MA, Greimel S, Kuskowski M, Schneider JA, Bennett DA et al (2012) Soluble alpha-synuclein is a novel modulator of Alzheimer's disease pathophysiology. *J Neurosci* 32:10253–10266
29. Leverenz JB, Fishel MA, Peskind ER, Montine TJ, Nochlin D, Steinbart E et al (2006) Lewy Body Pathology in Familial Alzheimer Disease. *Arch Neurol* 63: 370 American Medical Association
30. Li YJ, Hauser MA, Scott WK, Martin ER, Booze MW, Qin XJ et al (2004) Apolipoprotein E controls the risk and age at onset of Parkinson disease. *Neurology* 62:2005–2009
31. Lippa CF, Fujiwara H, Mann DMA, Giasson B, Baba M, Schmidt ML et al (1998) Lewy bodies contain altered α -Synuclein in brains of many familial Alzheimer's disease patients with mutations in Presenilin and amyloid precursor protein genes. *Am J Pathol* 153:1365–1370
32. Liu C-C, Liu C-C, Kanekiyo T, Xu H, Bu G (2013) Apolipoprotein E and Alzheimer disease: risk, mechanisms and therapy. *Nat Rev Neurol* 9:106–118 NIH Public Access
33. Masliah E, Iwai A, Mallory M, Uéda K, Saitoh T (1996) Altered presynaptic protein NACP is associated with plaque formation and neurodegeneration in Alzheimer's disease. *Am J Pathol* 148:201–210 American Society for Investigative Pathology
34. McKhann G, Drachman D, Folstein M, Katzman R, Price D, Stadlan EM (1984) Clinical diagnosis of Alzheimer's disease: report of the NINCDS-ADRDA work group under the auspices of Department of Health and Human Services Task Force on Alzheimer's disease. *Neurology* 34:939–944 American Academy of Neurology
35. McKhann GM, Knopman DS, Chertkow H, Hyman BT, Jack CR, Kawas CH et al (2011) The diagnosis of dementia due to Alzheimer's disease: recommendations from the National Institute on Aging-Alzheimer's association workgroups on diagnostic guidelines for Alzheimer's disease. *Alzheimers Dement* 7:263–269 Elsevier
36. Mintun MA, LaRossa GN, Sheline YI, Dence CS, Lee SY, Mach RH et al (2006) [¹¹C]PIB in a nondemented population: Potential antecedent marker of Alzheimer disease. *Neurology* 67:446–452
37. Mollenhauer B, Cullen V, Kahn I, Krastins B, Outeiro TF, Pepivani I et al (2008) Direct quantification of CSF α -synuclein by ELISA and first cross-sectional study in patients with neurodegeneration. *Exp Neurol* 213:315–325 Academic Press
38. Mollenhauer B, Cullen V, Kahn I, Krastins B, Outeiro TF, Pepivani I et al (2008) Direct quantification of CSF α -synuclein by ELISA and first cross-sectional study in patients with neurodegeneration. *Exp Neurol* 213:315–325
39. Mollenhauer B, Locascio JJ, Schulz-Schaeffer W, Sixel-Döring F, Trenkwalder C, Schlossmacher MG (2011) α -Synuclein and tau concentrations in cerebrospinal fluid of patients presenting with parkinsonism: a cohort study. *Lancet Neurol*. Elsevier 10:230–240
40. Morris JC, Roe CM, Xiong C, Fagan AM, Goate AM, Holtzman DM et al (2010) APOE predicts amyloid-beta but not tau Alzheimer pathology in cognitively normal aging. *Ann Neurol* 67:122–131 NIH Public Access
41. Mueller C, Ballard C, Corbett A, Aarsland D (2017) The prognosis of dementia with Lewy bodies. *Lancet Neurol* 16:390–398
42. Ogaki K, Martens YA, Heckman MG, Koga S, Labbé C, Lorenzo-Betancor O et al (2018) Multiple system atrophy and apolipoprotein E. *Mov Disord* 33(4):647–650
43. Öhrfelt A, Grognet P, Andreasen N, Wallin A, Vanmechelen E, Blennow K et al (2009) Cerebrospinal fluid α -synuclein in neurodegenerative disorders—a marker of synapse loss? *Neurosci Lett* 450:332–335 Elsevier
44. Palmqvist S, Schöhl M, Strandberg O, Mattsson N, Stomrud E, Zetterberg H et al (2017) Earliest accumulation of β -amyloid occurs within the default-mode network and concurrently affects brain connectivity. *Nat Commun* 8: 1214 Nat Nature Publishing Group
45. Patra K, Soosaipillai A, Sando SB, Lauridsen C, Berge G, Møller I et al (2018) Assessment of kallikrein 6 as a cross-sectional and longitudinal biomarker for Alzheimer's disease. *Alzheimers Res Ther* 10:9 BioMed Central
46. Pletnikova O, West N, Lee MK, Rudow GL, Skolasky RL, Dawson TM et al (2005) A β deposition is associated with enhanced cortical α -synuclein lesions in Lewy body diseases. *Neurobiol Aging* 26:1183–1192
47. Rosén C, Hansson O, Blennow K, Zetterberg H (2013) Fluid biomarkers in Alzheimer's disease – current concepts. *Mol Neurodegener* 8:20
48. Rousset OG, Ma Y, Evans AC (1998) Correction for partial volume effects in PET: principle and validation. *J Nucl Med* 39:904–911
49. Rowland DJ, Garbow JR, Laforest R, Snyder AZ, Xu S, Zanzonico PB et al (2005) Registration of [¹⁸F]FDG microPET and small-animal MRI. *Nucl Med Biol* 32:567–572 Elsevier
50. Saint-Aubert L, Lemoine L, Chiotis K, Leuzy A, Rodriguez-Vieitez E, Nordberg A (2017) Tau PET imaging: present and future directions. *Mol Neurodegener* 12:19 BioMed Central
51. Saman S, Kim W, Raya M, Visnick Y, Miro S, Saman S et al (2012) Exosome-associated tau is secreted in tauopathy models and is selectively phosphorylated in cerebrospinal fluid in early Alzheimer disease. *J Biol Chem* 287:3842–3849 American Society for Biochemistry and Molecular Biology
52. Spencer B, Michael S, Shen J, Kosberg K, Rockenstein E, Patrick C et al (2013) Lentivirus mediated delivery of neurosin promotes clearance of wild-type α -synuclein and reduces the pathology in an α -synuclein model of LBD. *Mol Ther* 21:31–41 Elsevier
53. Su Y, Blazey TM, Owen CJ, Christensen JJ, Friedrichsen K, Joseph-Mathurin N et al (2016) Quantitative Amyloid Imaging in Autosomal Dominant Alzheimer's Disease: Results from the DIAN Study Group. *PLoS One* 11: e0152082 Herholz K, editor. Public Library of Science
54. Su Y, D'Angelo GM, Vlassenko AG, Zhou G, Snyder AZ, Marcus DS et al (2013) Quantitative Analysis of PiB-PET with FreeSurfer ROIs. *PLoS One* 8: e73377 Chen K, editor. Public Library of Science
55. Tatebe H, Watanabe Y, Kasai T, Mizuno T, Nakagawa M, Tanaka M et al (2010) Extracellular neurosin degrades α -synuclein in cultured cells. *Neurosci Res* 67:341–346 Elsevier
56. Tateno F, Sakakibara R, Kawai T, Kishi M, Murano T (2012) Alpha-synuclein in the cerebrospinal fluid differentiates Synucleinopathies (Parkinson disease, dementia with Lewy bodies, multiple system atrophy) from Alzheimer disease. *Alzheimer Dis Assoc Disord* 26:213–216
57. Tokuda T, Salem SA, Allsop D, Mizuno T, Nakagawa M, Qureshi MM et al (2006) Decreased α -synuclein in cerebrospinal fluid of aged individuals and subjects with Parkinson's disease. *Biochem Biophys Res Commun* 349:162–166 Academic Press
58. Uéda K, Fukushima H, Masliah E, Xia Y, Iwai A, Yoshimoto M et al (1993) Molecular cloning of cDNA encoding an unrecognized component of amyloid in Alzheimer disease. *Proc Natl Acad Sci U S A* 90:11282–11286
59. Vergallo A, Bun R-S, Toschi N, Baldacci F, Zetterberg H, Blennow K et al (2018) Association of cerebrospinal fluid α -synuclein with total and phospho-tau 181 protein concentrations and brain amyloid load in cognitively normal subjective memory complainers stratified by Alzheimer's disease biomarkers. *Alzheimers Dement*:1–9. <https://doi.org/10.1016/j.jalz.2018.06.3053>.
60. Wang H, Stewart T, Toledo JB, Gingham C, Tang L, Atik A et al (2018) A longitudinal study of Total and phosphorylated α -Synuclein with other biomarkers in cerebrospinal fluid of Alzheimer's disease and mild cognitive impairment. *J Alzheimer's Dis* 61:1541–1553 IOS Press
61. Wennström M, Lontos E, Minthon L, Nielsen HM (2012) Altered CSF orexin and α -synuclein levels in dementia patients. *J Alzheimers Dis* 29:125–132
62. Wennström M, Surova Y, Hall S, Nilsson C, Minthon L, Boström F et al (2013) Low CSF levels of both α -synuclein and the α -synuclein cleaving enzyme neurosin in patients with synucleinopathy. *PLoS One* 8:e53250 Public Library of Science

63. Winblad B, Palmer K, Kivipelto M, Jelic V, Fratiglioni L (2004) Mild cognitive impairment – beyond controversies, towards a consensus : report of the International Working Group on Mild Cognitive Impairment, pp 240–246
64. Winslow AR, Moussaud S, Zhu L, Post KL, Dickson DW et al (2014) Convergence of pathology in dementia with Lewy bodies and Alzheimer's disease: a role for the novel interaction of alpha-synuclein and presenilin 1 in disease. *Brain Oxford* 137:1958–1970 University Press
65. Wirths O, Weickert S, Majtenyi K, Havas L, Kahle PJ, Okochi M et al (2000) Lewy body variant of Alzheimer's disease: alpha-synuclein in dystrophic neurites of a beta plaques. *Neuroreport* 11:3737–3741
66. Wong YC, Krainc D (2017) A-Synuclein Toxicity in Neurodegeneration: Mechanism and Therapeutic Strategies. *Nat Med* 23:1–13 Nature Publishing Group
67. Xia M, Wang J, He Y (2013) BrainNet Viewer: A Network Visualization Tool for Human Brain Connectomics. *PLoS One* 8:e68910 Csermely P, editor. Public Library of Science
68. Zetterberg H, Petzold M, Magdalinou N (2014) Cerebrospinal fluid α -synuclein levels in Parkinson's disease - changed or unchanged? *Eur J Neurol* 21(10.1111):365–367 Wiley/Blackwell

Ready to submit your research? Choose BMC and benefit from:

- fast, convenient online submission
- thorough peer review by experienced researchers in your field
- rapid publication on acceptance
- support for research data, including large and complex data types
- gold Open Access which fosters wider collaboration and increased citations
- maximum visibility for your research: over 100M website views per year

At BMC, research is always in progress.

Learn more biomedcentral.com/submissions

