

Protein Malnutrition Induces Bone Marrow Mesenchymal Stem Cells Commitment to Adipogenic Differentiation Leading to Hematopoietic Failure

Mayara Caldas Ramos Cunha¹, Fabiana da Silva Lima¹, Marco Aurélio Ramirez Vinolo², Araceli Hastreiter¹, Rui Curi³, Primavera Borelli¹, Ricardo Ambrósio Fock^{1*}

1 Department of Clinical and Toxicological Analyses, Faculty of Pharmaceutical Sciences, University of São Paulo, São Paulo, Brazil, **2** Department of Genetics, Evolution and Bioagents. Institute of Biology, University of Campinas-Unicamp, Campinas, Brazil, **3** Department of Physiology and Biophysics, Institute of Biomedical Sciences, University of São Paulo, São Paulo, Brazil

Abstract

Protein malnutrition (PM) results in pathological changes that are associated with peripheral leukopenia, bone marrow (BM) hypoplasia and alterations in the BM microenvironment leading to hematopoietic failure; however, the mechanisms involved are poorly understood. In this context, the BM mesenchymal stem cells (MSCs) are cells intimately related to the formation of the BM microenvironment, and their differentiation into adipocytes is important because adipocytes are cells that have the capability to negatively modulate hematopoiesis. Two-month-old male Balb/c mice were subjected to protein-energy malnutrition with a low-protein diet containing 2% protein, whereas control animals were fed a diet containing 12% protein. The hematopoietic parameters and the expression of CD45 and CD117 positive cells in the BM were evaluated. MSCs were isolated from BM, and their capability to produce SCF, IL-3, G-CSF and GM-CSF were analyzed. The expression of PPAR- γ and C/EBP- α as well as the expression of PPAR- γ and SREBP mRNAs were evaluated in MSCs together with their capability to differentiate into adipocytes *in vitro*. The malnourished animals had anemia and leukopenia as well as spleen and bone marrow hypoplasia and a reduction in the expression of CD45 and CD117 positive cells from BM. The MSCs of the malnourished mice presented an increased capability to produce SCF and reduced production of G-CSF and GM-CSF. The MSCs from the malnourished animals showed increased expression of PPAR- γ protein and PPAR- γ mRNA associated with an increased capability to differentiate into adipocytes. The alterations found in the malnourished animals allowed us to conclude that malnutrition committed MSC differentiation leading to adipocyte decision and compromised their capacity for cytokine production, contributing to an impaired hematopoietic microenvironment and inducing the bone marrow failure commonly observed in protein malnutrition states.

Citation: Cunha MCR, Lima FdS, Vinolo MAR, Hastreiter A, Curi R, et al. (2013) Protein Malnutrition Induces Bone Marrow Mesenchymal Stem Cells Commitment to Adipogenic Differentiation Leading to Hematopoietic Failure. PLoS ONE 8(3): e58872. doi:10.1371/journal.pone.0058872

Editor: Xing-Ming Shi, Georgia Regents University, United States of America

Received: November 6, 2012; **Accepted:** February 7, 2013; **Published:** March 14, 2013

Copyright: © 2013 Cunha et al. This is an open-access article distributed under the terms of the Creative Commons Attribution License, which permits unrestricted use, distribution, and reproduction in any medium, provided the original author and source are credited.

Funding: This investigation was supported by grants from the Fundação de Amparo a Pesquisa do Estado de São Paulo–FAPESP (2010/51747-0). The funders had no role in study design, data collection and analysis, decision to publish, or preparation of the manuscript.

Competing Interests: The authors have declared that no competing interests exist.

* E-mail: hemato@usp.br

Introduction

Protein malnutrition decreases the production of blood cells, leading to bone marrow hypoplasia and inducing structural alterations interfering with both innate and adaptive immunity [1,2,3,4]. Blood cells arise in the bone marrow from stem cells able to undergo processes of proliferation and differentiation in the hematopoietic microenvironment [5,6].

Adequate hematopoiesis is dependent on an intact and functional bone marrow microenvironment, which is an environment fully competent to provide the appropriate signals through the production of soluble factors and cell-cell contact interactions regulating by several mechanisms, directly or indirectly, the self-renewal, proliferation, survival, migration and differentiation of hematopoietic cells [6,7,8].

The cellular constituents of the bone marrow microenvironment, also defined as the hemopoietic niche, largely derive from a common progenitor of mesenchymal origin called mesenchymal stem cells (MSCs), initially identified in adult bone marrow and

that have classically the ability to self-renew and differentiate into tissues of mesodermal origin such as osteocytes, chondrocytes and adipocytes [6,7].

The bone marrow adipocyte is one type of cell that currently has been paid more attention for being able to modulate hematopoiesis and that is not just a type of tissue filler [8,9]. The literature reports on the importance of the bone marrow adipocytes in complex hematopoietic regulation and on the influence of bone marrow adipocytes as negative regulators of hematopoiesis compromising the capacity to produce growth factors such as granulocyte-macrophage colony stimulator factor (GM-CSF) and granulocyte colony stimulator factor (G-CSF) [8].

In the bone marrow, the differentiation and maturation of mesenchymal stem cells are harmoniously controlled by specific signal transduction and specific groups of transcription factors. In this context, adipogenic differentiation is controlled by different transcriptional factors, such as members of the CCAAT/enhancer-binding protein (C/EBP) family, like C/EBP α and C/

EBP β , that initiate the differentiation of adipocytes followed by the activation of the peroxisome proliferator-activated receptor γ (PPAR- γ), a member of the nuclear hormone receptor family that regulates adipocyte-specific gene expression and is critical for the maturation of lipid-filled adipose cells from pluripotent stem cells through the sterol regulatory element binding proteins (SREBPs) that regulate lipid homeostasis [10,11]. Attention is given to PPAR- γ , which in isolation can initiate adipogenic differentiation without inducers, and C/EBP α , a second transcription factor induced during adipocyte differentiation, that cooperates with PPAR- γ to dramatically stimulate the adipocyte program [12].

Knowing that hematopoietic tissues, like all tissues that have a high rate of cell renewal and proliferation, require an ample supply of nutrients and may thus be altered by deficient states, our group demonstrated that in the situation of protein malnutrition, hematopoietic commitment with reduction of hematopoietic stem cell proliferation committing granulopoiesis, which contributes to the peripheral leukopenia and neutropenia commonly found in protein malnutrition states, suggesting a state of bone marrow failure [1,2,3,13]. In this study, we decided to investigate the influence of protein malnutrition on modifying the bone marrow mesenchymal stem cells and on the formation of adipocytes that influence hematopoiesis.

Materials and Methods

Diets

The murine diets were prepared in our laboratory. The mineral and vitamin mixtures were prepared according to the recommendations of the American Institute of Nutrition for adult mice [14]. Casein (>85% protein) was used as the protein source. Both diets contained 100 g/kg sucrose, 80 g/kg soybean oil, 10 g/kg fiber, 2.5 g/kg choline bitartrate, 1.5 g/kg L-methionine, 40 g/kg of the mineral mixture and 10 g/kg of the vitamin mixture. The control diet contained 120 g/kg casein and 636 g/kg cornstarch, while the malnourishment diet contained 20 g/kg casein and 736 g/kg cornstarch. Except for the protein content, the two diets were identical and isocaloric; the total amount of casein removed from the formulation of the hypoproteic diet was substituted by the same mass of cornstarch. The diets were isocaloric and provided 1716.3 kJ/100 g. The final protein content was confirmed using the standard micro-Kjeldahl method [15].

Animals

Two-month-old, male inbred BALB/c mice were obtained from the animal laboratory at the Faculty of Pharmaceutical Sciences at the University of São Paulo. The mice were placed in individual “metabolic cages” and received the control diet for 7 days until their body weight stabilized. After this period of adaptation, the animals were divided into two groups and maintained under a regular 12 h light/dark cycle at a temperature of 22–25°C and a relative humidity of 55±10%, receiving either the control or the low-protein diet and water *ad libitum*. Body weight and food consumption were monitored every 48 h. The mice were subjected to experimental assays after 21 days of eating their respective diets, when members of the malnourished group had lost approximately 20% of their original body weight. A nutritional evaluation was performed by measuring the body weight and diet consumption, the protein, albumin and pre-albumin concentrations and the hematological parameters. The body weight variation was calculated using the initial (after the adaptation period) and final weight (day of sacrifice) of the animals in both of the groups, and the results are expressed as the mean plus or minus the standard deviation. This study was approved by

the Ethics Committee of the Faculty of Pharmaceutical Sciences at the University of São Paulo (protocol number 277/2010), in accordance to the guidelines of the Brazilian College on Animal Experimentation. All efforts were made to minimize animal suffering and to reduce the number of animals used.

Blood

The mice from the control and malnourished groups were anesthetised with xylazine chlorohydrate (Rompum[®], 10 mg/kg, Bayer S.A., São Paulo, SP, Brazil) and ketamide chlorohydrate (Ketamina[®], 100 mg/kg, Cristália Ltd., Itapira, SP, Brazil), and then, whole blood samples with and without EDTA (1 mg/mL) were obtained via cardiac puncture. After the blood collection, the anesthetized animals were sacrificed. The hemogram parameters were determined by automatic methods using an ABC Vet instrument (Horiba **ABX** Diagnostics, **Montpellier**, France). The differential leukocyte counts were performed on blood smears stained with the standard May-Grunwald Giemsa solutions (Sigma Chemical Co., St. Louis, MO, USA). The serum was separated by centrifugation; the content of total protein, albumin, and pre-albumin was monitored by the standard methods used in medical analyses.

Spleen Cellularity

The spleens of the control and malnourished mice were removed, placed in Petri dishes containing 5 mL of Dulbecco's modified Eagle's **medium** (DMEM) (Vitrocell, Campinas, SP, Brazil) with EDTA (1 mg/mL) and dissociated gently using needles and tweezers. Total cells were determined using a Neubauer chamber and the differential cell counts were performed on smears stained with the standard May-Grünwald Giemsa solutions (Sigma Chemical Company, St. Louis, MO, USA).

Bone Marrow Histology

Mice from the control and malnourished groups had the sternum removed, which was immediately immersed in a 4% paraformaldehyde fixative at room temperature for 24 h. The sternums were decalcified in 5% EDTA (pH 7.2) for one week. After decalcification, the sternums were processed by standard histological techniques (paraffin-embedding). Five-micrometer sections of sternums were stained by hematoxylin-eosin (H/E) and were evaluated by conventional optical microscopy.

Bone Marrow Cellularity

The femurs of the control and malnourished mice were removed under aseptic conditions, and the bone marrow cells were flushed from them using Dulbecco's modified Eagle's **medium** (DMEM) (Vitrocell, Campinas, SP, Brazil) supplemented with 10% fetal calf serum (Vitrocell, Campinas, SP, Brazil). The cells were washed by adding complete medium, centrifuging for 5 minutes at 300 rpm at 24°C, and removing the supernatant.

The mielogram counts were performed by counting cells using a Neubauer chamber (Herka, Berlin, Germany), and the differential cell counts were performed on smears stained with the standard May-Grünwald Giemsa solutions (Sigma Chemical Company, St. Louis, MO, USA). Flow cytometry was used to determine the fraction of the total bone marrow cells that were positively labelled with antibodies against CD117 (cat. no. 553354, Becton Dickinson Pharmingen, San Diego, CA, USA, FITC, clone 2B8) or CD45 (cat. no. 553079, Becton Dickinson Pharmingen, San Diego, CA, USA, FITC, clone 30-F11). The isotype control antibody was FITC-labelled rat immunoglobulin IgG2b

kappa FITC (cat. no. 553988, Becton Dickinson Pharmingen, San Diego, CA, USA, FITC, clone A95-1).

Colony Forming Unit Fibroblastic (CFU-F) Assay

The bone marrow cells from the control and malnourished animals, isolated as described above, were assessed by the CFU-F assay. The CFU-F assay was performed by plating 5×10^5 cells in 35 mm tissue culture plates (Corning, Tewksbury, MA, USA). The cells were cultured using DMEM (Vitrocell, Campinas, SP, Brazil) supplemented with 10% fetal calf serum (Vitrocell, Campinas, SP, Brazil) for 2 weeks at 37°C in 5% CO₂ in air. The culture medium was replenished on days 3, 7 and 14 of culture. After 14 days, the developed cell colonies were visualized, and the number of colonies containing more than 50 fibroblastoid cells, denominated CFU-F, was scored using an inverted microscope.

Isolation of Mesenchymal Stem Cells

The bone marrow cells from the control and malnourished animals were collected as described above. The bone marrow cells were cultured in 25 cm² culture flasks (Corning, Tewksbury, MA, USA) with complete medium at 37°C in 5% CO₂ in air. The MSCs preferentially attach to the polystyrene surface, and therefore, after 48 h, the suspended non-adherent cells were discarded. Fresh complete medium was added and was replaced every three or four days thereafter. When the cells reached 90% of confluence, the MSC cultures were passaged: the cells were recovered by the addition of a 0.25% trypsin-EDTA (GIBCO Invitrogen, Carlsbad, CA, USA) solution and replated in culture flasks. The cells utilized for experimentation were from passages 3. The cells at passage 3 were confirmed to be mesenchymal stem cells by the pattern of expression of cell surface markers: CD90.2⁺ (cat. no. 553013, Becton Dickinson Pharmingen, San Diego, CA, USA, FITC, clone 30-H12), CD271⁺ (cat. no. ab62122, Abcam, Cambridge, MA, USA, FITC, clone MLR2), Scal⁺ (cat. no. 557405, Becton Dickinson Pharmingen, San Diego, CA, USA, FITC, clone D7), CD13⁺ (cat. no. 558744, Becton Dickinson Pharmingen, San Diego, CA, USA, FITC, clone R3-242), CD34⁻ (cat. no. 5553733, Becton Dickinson Pharmingen, San Diego, CA, USA, FITC, clone RAM34), CD45⁻ (cat. no. 553079, Becton Dickinson Pharmingen, San Diego, CA, USA, FITC, clone 30-F11) and CD14⁻ (cat. no. 553739, Becton Dickinson Pharmingen, San Diego, CA, USA, FITC, clone rmC5-3), and by their capacity for differentiation into osteoblasts, chondrocytes and adipocytes.

Real-time PCR for PPAR- γ and SREBP in Bone Marrow MSCs

The MSCs from the control and malnourished groups were isolated as described above. The total RNA was obtained from 1×10^6 MSCs at passage 3 using a RNeasy RNA extraction kit (Qiagen, Germantown, MD, USA) according to the manufacturers protocol. The total RNA (3 μ g) was reverse-transcribed into cDNA using the high capacity cDNA reverse transcription kit (Applied Biosystems, Foster City, CA, USA). The cDNA samples were then amplified in the TaqMan universal master mix with optimized concentrations of the primer sets for PPAR- γ (Mm01184322_m1, Applied Biosystems, Foster City, CA, USA) and SREBP1c (Mm00550338_m1, Applied Biosystems, Foster City, CA, USA). The internal control used was 18S RNA (Mm03928990_g1, Applied Biosystems, Foster City, CA, USA). The expression of PPAR- γ and SREBP were evaluated by real-time PCR using StepOnePlusTM (Applied Biosystems, Foster City, CA, USA). The amplification

conditions were as follows: an initial 5 min at 95°C, then 40 cycles of denaturation at 95°C for 10 s and annealing and extension at 60°C for 30 s. The relative quantification of PPAR- γ and SREBP was conducted according to the $\Delta\Delta$ Ct method [16].

Western Blot Analysis

The bone marrow MSCs from the control and malnourished mice were isolated as described above; then, the levels of PPAR- γ and C/EBP α proteins were quantified by the Western blot technique. MSCs were washed three times with sterile cold PBS and lysed with RIPA buffer (0.1% SDS, 1% Igepal CA-630, 1% sodium deoxycholate, 10 mM Tris-HCL, pH 7.5, 150 mM NaCl, 0.5 mM EDTA). To inhibit the activity of proteases and phosphatases, a protease and phosphatase inhibitor cocktail was added (*Sigma-Aldrich Corp., St. Louis, MO, USA*). After centrifugation at 14,000 rpm and 4°C for 15 minutes, the supernatant was collected, mixed with 5 \times Laemmli buffer (1 M Tris HCl, pH 6.8, 10% 2-mercaptoethanol, 10% SDS, 50% glycerol and 0.01% bromophenol blue) and boiled for 5 minutes. The protein content of the cell homogenates was determined using a BCA Protein Assay kit (*Pierce Biotechnology, Inc., Rockford, IL, USA*), and equal amounts of protein (30 μ g per well) were separated on 7.5% SDS-polyacrylamide mini-gels and transferred to Immobilon polyvinylidene difluoride membranes (*Millipore Corporation, Billerica, MA, USA*). After incubation with the appropriate primary antibodies, including 1:1,000 of anti-PPAR- γ (cat. no. sc7196, *Santa Cruz Biotechnology, Santa Cruz, CA, USA*) or 1:500 of anti-C/EBP α (cat. no. sc63486, *Santa Cruz Biotechnology, Santa Cruz, CA, USA*), the membranes were incubated at room temperature overnight with the primary antibody and for 1 h with a secondary antibody conjugated to horseradish peroxidase (cat. no. DC03L, *Calbiochem, San Diego, CA, USA*). After three washes with TBST, the immunoreactive bands were visualised using the ECL detection system (Amersham ECLTM Advance Western Blotting Detection Kit, Piscataway, NJ, USA). To standardize and quantify the immunoblots, a digital detection system (IMAGE QUANTTM 400 version 1.0.0, Amersham Biosciences, Pittsburgh, PA, USA) was used. The results were expressed in relation to the intensity for β -actin (1:20,000 for anti- β -actin, Cell Signaling Technology, Inc., Beverly, MA, USA) as a percentage of the control value.

Bone Marrow Mesenchymal Stem Cell Culture and SCF, G-CSF, GM-CSF and IL-3 Quantification

Bone marrow MSCs from the control and malnourished mice were isolated as described above and 1×10^6 MSCs/mL at passage 3 were cultured in DMEM medium (Vitrocell, Campinas, SP, Brazil) supplemented with 10% fetal calf serum (Vitrocell, Campinas, SP, Brazil). These cells were incubated at 37°C in a humidified atmosphere of 5% CO₂ and on days 3, 7 and 14 of culture, the medium was totally replaced. The medium was collected at the time points of 3, 7 and 14 days of culture and used for the quantification of SCF, G-CSF, GM-CSF and IL-3 by ELISA. The results were measured at each time point and the area under the curve was calculated to evaluate the predictive capability of cytokine production. The tests were performed using a commercially available reagent, Quantikine[®] M murine (*R&D Systems Inc, Minneapolis, MN, USA*), following the procedures recommended by the manufacturer. The entire procedure was executed under aseptic conditions, and all of the materials used were previously sterilized and were pyrogen-free.

Table 1. Protein intake, body weight variation, blood cell count, and concentrations of plasma protein, albumin, and pre-albumin of control and malnourished mice.

Groups	Control (n = 12)		Malnourished (n = 12)	
Diet consumption (g/day/animal)	6.14±0.78		6.04±0.70	
Protein consumption (g/day/animal)	0.73±0.09		0.12±0.01***	
Body weight variation (%)	6.33±1.3		-17.7±1.3*	
Plasma protein (g/dL)	6.7±0.44		4.0±0.61*	
Albumin (g/dL)	3.2±0.61		2.1±0.44*	
Pre-albumin (mg/dL)	10.9±1.9		2.97±1.1*	
Erythrocytes (x 10 ⁶ /mm ³)	8.77±0.29		6.99±0.37*	
Hemoglobin (g/dL)	14.9±0.33		11.9±0.47*	
Hematocrit (%)	44.5±0.77		36.9±0.99*	
Leukocytes (/mm ³)	2790±490		1008±189*	
Neutrophils (/mm ³)	189±2.7		33.7±1.9*	
Eosinophils (/mm ³)	9.9±0.11		1.4±0.03*	
Lymphocytes (/mm ³)	2425±238		974±111*	
Monocytes (/mm ³)	59±6.1		18.1±1.9*	

The results, expressed as the means with standard deviations, are presented for protein consumption, change in body weight, serum protein, albumin, and pre-albumin concentrations, number of erythrocytes, hemoglobin concentration, hematocrit, number of reticulocytes, and total number of leukocytes, neutrophils, lymphocytes, and monocytes of control and malnourished animals. The number in parentheses denotes the total number of animals used in the experiment.

*($p \leq 0.05$) and ***($p \leq 0.001$) indicates where there was a significant difference between the control group and the malnourished group.

doi:10.1371/journal.pone.0058872.t001

Adipogenic Differentiation of Bone Marrow Mesenchymal Stem Cells

Bone marrow MSCs from the control and malnourished mice were isolated as described above and 5×10^5 MSCs at passage 3 were plated in 35 mm tissue plates using DMEM medium supplemented with 10% fetal calf serum and 0.5 μ M 1-methyl-3-isobutyl methylxanthine (Sigma-Aldrich, St. Louis, MO, USA), 1 μ M dexamethasone (Prodome, Campinas, SP, Brazil), 10 μ M insulin (Sigma-Aldrich, St. Louis, MO, USA; I0516), and 200 μ M indomethacin (Sigma-Aldrich, St. Louis, MO, USA) (Romanov et al., 2003). After 1 week, the cultures were fixed in a 10% formaldehyde solution (Sigma) for 1 hour, washed with isopropanol

(Sigma) and stained with Oil Red O solution (in 60% isopropanol) for 5 minutes followed by five washes with PBS and then counterstained with the standard May-Grunwald Giemsa solutions (Sigma) and the number of adipocytes was quantified by microscopy. At the same time, cultures stained with Oil Red O without counterstaining were destained by 100% isopropanol for 15 minutes, and the optical density (O.D.) of the solution was measured at 540 nm in a microplate reader.

Statistical Analysis

The results are expressed as the mean with the standard deviation. Differences between groups were examined using

Table 2. Bone marrow and spleen cell count of control and malnourished animals.

Groups	Cells (x10 ⁶ /mL)			
	Bone Marrow		Spleen	
	Control (n = 12)	Malnourished (n = 12)	Control (n = 12)	Malnourished (n = 12)
Total Cells	10.01±2.20	6.16±1.11**	11.24±1.78	8.08±1.01***
Blast cells	0.61±0.08	0.25±0.03**	0.37±0.11	0.24±0.11*
Neutrophils: promyelocytic and myelocytic cells	0.82±0.09	0.52±0.02*	0.43±0.19	0.27±0.21
Neutrophils: band cells	1.71±0.18	1.14±0.13*	0.29±0.11	0.19±0.07*
Neutrophils: segmented	2.22±0.28	1.45±0.14**	0.63±0.16	0.30±0.13***
Eosinophils	0.20±0.05	0.07±0.01*	0.06±0.06	0.02±0.04
Erythroblasts	1.52±0.18	0.22±0.05***	1.78±1.04	0.87±0.25***
Lymphocytes	2.41±0.21	1.90±0.15*	7.29±1.46	5.91±0.93*
Macrophages	0.17±0.02	0.01±0.02*	0.09±0.11	0.07±0.06

The results are expressed as the means with standard deviation for the total and differential cell counts of bone marrow and spleen cells of the control and malnourished animals. The number in parentheses denotes the total number of animals used in the experiment.

*($p \leq 0.05$), **($p \leq 0.01$) and ***($p \leq 0.001$) indicates where there was a significant difference between the control group and the malnourished group.

doi:10.1371/journal.pone.0058872.t002

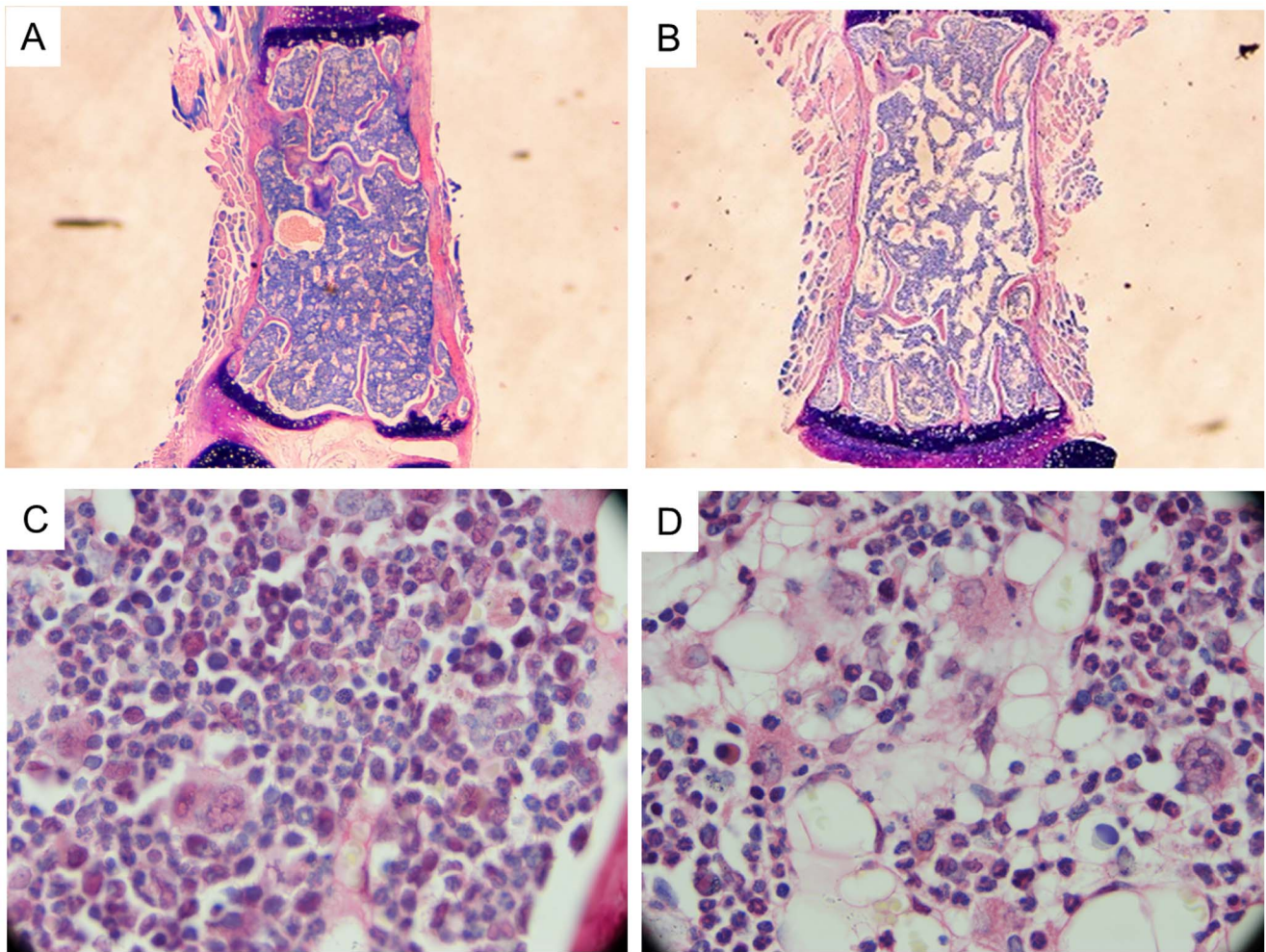


Figure 1. Sections of bone and marrow from control and malnourished animals. (A) Bone marrow biopsy section from a control animal showing normal cellularity with heterogeneous populations of cells at different stages of maturation. Embedded in paraffin (HE stain, $\times 4$). (B) Bone marrow biopsy section from a malnourished animal showing severe hypocellularity. Embedded in paraffin (HE stain, $\times 4$). (C) Bone marrow biopsy section from a control animal showing normal cellularity. Embedded in paraffin (HE stain, $\times 1000$). (D) Bone marrow biopsy section from a malnourished animal showing hypocellularity and adipocytes increase. Embedded in paraffin (HE stain, $\times 1000$). Sections are representative of control ($n=6$) or malnourished group ($n=6$).
doi:10.1371/journal.pone.0058872.g001

Students *t* test ($p \leq 0.05$). The cytokine values were analyzed from the area under the curve, and the results were examined using Students *t* test ($p \leq 0.05$). All tests were performed using the computer software Graphpad Prism®.

Results

Diets, Food Consumption, Protein Consumption, Body Weight Variation, Plasma Protein, Pre-albumin, and Albumin Concentrations

The animals in the malnourished group consumed the same quantity of food and calories did as the controls, but their ingestion of protein was reduced because the hypoproteic diet had a lower protein content. The animals from the malnourished group exhibited a significant loss of body weight, of approximately 20% of their initial weight, and a significant decrease in total serum protein, albumin and pre-albumin concentrations (**Table 1**).

Blood, Spleen and Bone Marrow Cellularity

The hemogram of the malnourished animals showed anemia and leucopenia with a significant reduction in neutrophils. Significant morphological differences in erythrocytes were not found (**Table 1**).

The spleen cellularity showed a significant reduction in malnourished animals in comparison to the control animals. The mielogram of the malnourished animals showed a significant reduction of the bone marrow cellularity with a significant reduction in polymorphonuclear cells, macrophages, and erythroblasts (**Table 2**).

Bone Marrow Histology

The malnourished group presented with shrinkage of the marrow hematopoietic space leading to a hypocellular bone marrow with depletion in all hematopoietic lineages as well as the presence of interstitial dilated areas with medullary lakes determined by dilated vessel lumens sinus and adipocyte-rich marrow (**Figure 1B and 1D**), whereas the control group

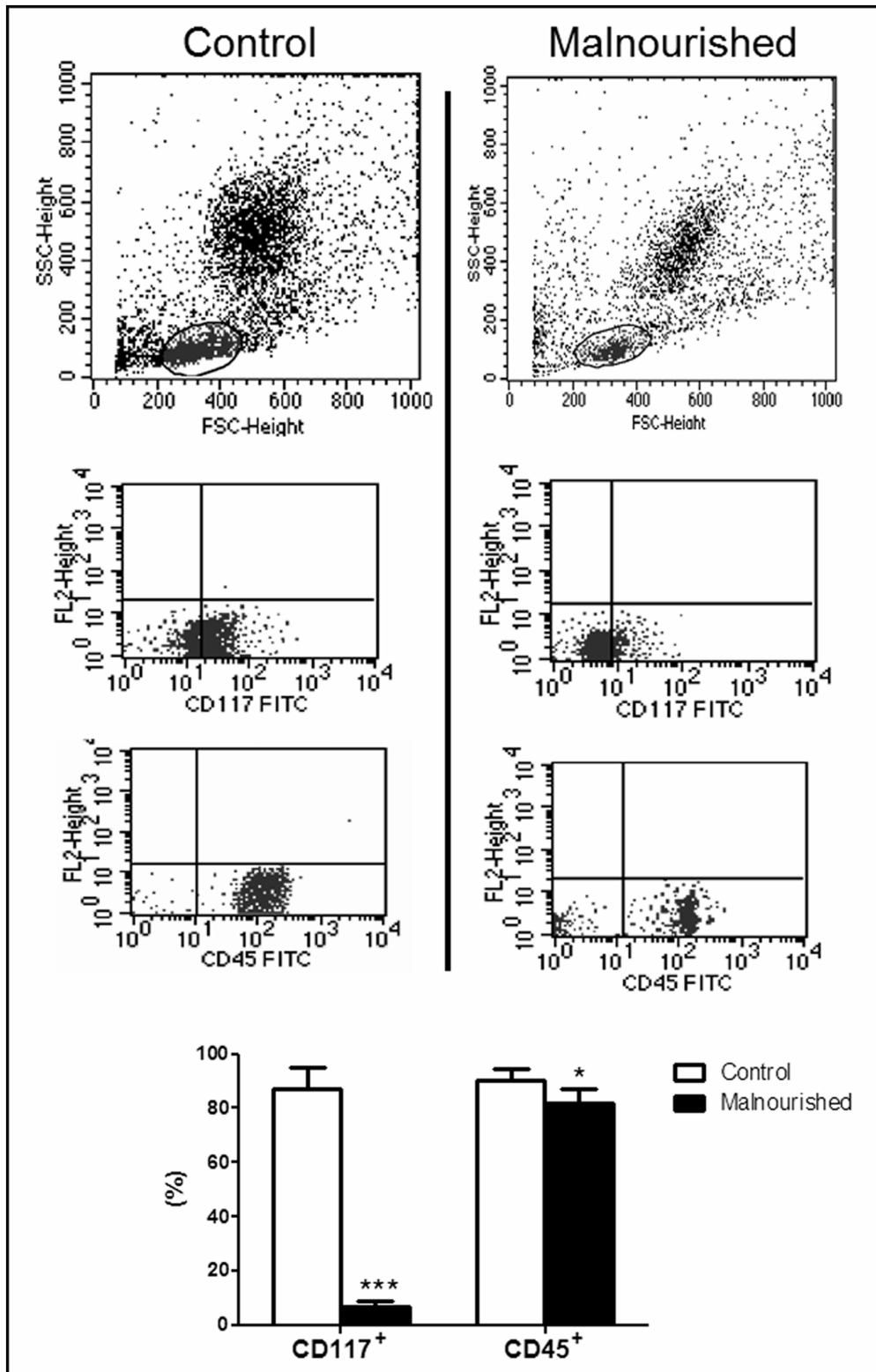


Figure 2. Flow cytometry analyses of the bone marrow of control and malnourished mice. The selection of gates, R1, for the cell populations that were not labeled with fluorochromes are indicated (SSC in the y-axis vs. FSC in the x-axis). Immunophenotypical bone marrow analysis was carried out in gate R1 for CD117 and CD45 expression. The graphical results are expressed as the means with standard deviations for CD117⁺ and CD45⁺ expression by control (n=6) and malnourished (n=6) mice. The number in brackets denotes the number of animals used in the experiment. *(p ≤ 0.05) and ***(p ≤ 0.001) indicate where there was a significant difference between the control group and the malnourished group. doi:10.1371/journal.pone.0058872.g002

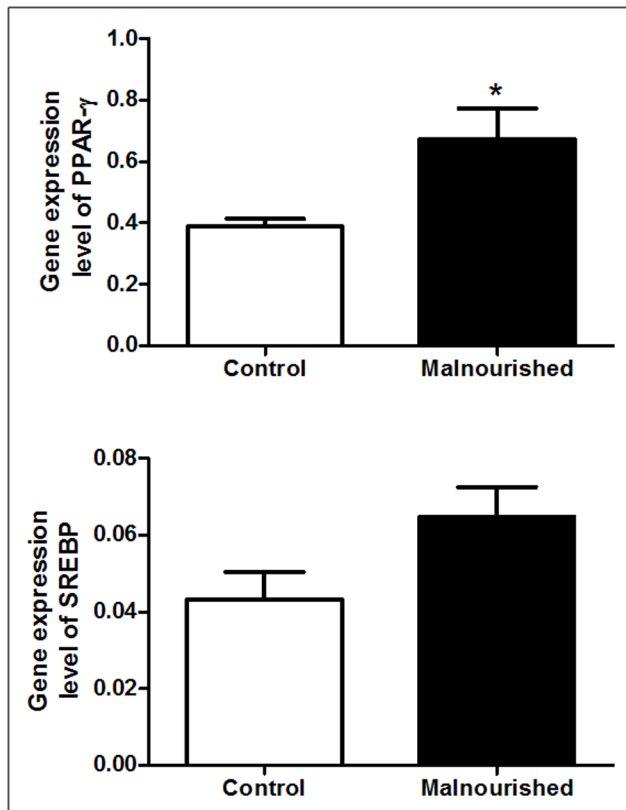


Figure 3. The results, expressed as the means with standard deviations, for the relative gene expression of PPAR- γ and SREBP in MSCs from control (n = 6) and malnourished animals (n = 6). Data were normalized to 18S. The number in brackets denotes the number of animals used in the experiment. * ($p \leq 0.05$) indicates where there was a significant difference between the control group and the malnourished group.

doi:10.1371/journal.pone.0058872.g003

presented a normocellular bone marrow with a predominantly granulocytic series (**Figure 1A and 1C**).

Bone Marrow CD45⁺ and CD117⁺ Cells Quantification

The bone marrow CD45⁺ and CD117⁺ cell quantification showed a reduced number of CD45⁺ and CD117⁺ cells in malnourished animals when compared to control animals (**Figure 2**).

MSCs Isolation and Colony Forming Unit Fibroblast (CFU-F) Assay

Our flow cytometry results showed that the cells isolated by the method classically described by Friedenstein et al. [17,18] and popularized by Caplan [19] that utilizes the physical property of adherence to plastic were a population that stained positive for CD90, CD271, CD49e, CD13 and Sca-1 and were negatively labeled for CD34, CD45 and CD14, with no contamination by hematopoietic cells (data not show). The cultures showed a heterogeneous morphology containing cells ranging from tapered and pointed fibroblast cells, to broad, polygonal cells, as described by Javazon et al. [20]. The colony-forming unit-fibroblast (CFU-F) assay showed a morphologically heterogeneous population in both groups (data not show). The quantification of CFU-F were performed on day 14 of culture and our results did

not show differences between the malnourished (43.2 ± 2.5 CFU-Fs) and control (44.8 ± 1.8 CFU-Fs) animals.

Real-time PCR for PPAR- γ and SREBP in Bone Marrow MSCs

The gene expression of PPAR- γ in the MSC from malnourished animals was increased when compared to control animals. PPAR- γ is a transcription factor and considered the master regulator of cells undergoing adipogenic differentiation. The levels of gene expression of SREBP were not significantly different between the groups, although a tendency toward increased expression was observed in malnourished animals when compared to control animals (**Figure 3**).

Expression of PPAR- γ and C/EBP α in MSCs

The transcription factors related to adipogenesis, PPAR- γ and C/EBP α were evaluated in isolated bone marrow MSCs by Western blotting (**Figure 4**). Our results demonstrated an increased expression of PPAR- γ in MSCs from malnourished animals when compared to control animals. We did not observe a significant difference in the expression of C/EBP α in MSCs from malnourished and control animals, although the MSCs from malnourished animals showed a tendency to have higher levels. These results indicate that protein malnutrition can change the balance of adipogenesis of MSCs from mice bone marrow MSCs.

Determination of SCF, G-CSF, GM-CSF and IL-3 Production in vitro

The supernatant was collected from the cultured MSCs for measurements of the cytokines produced by these cells. The results presented assessing the kinetics of production of SCF show that MSCs from the malnourished animals had a higher capacity to produce SCF and a lower capacity to produce G-CSF and GM-CSF when compared to control animals. In relation to IL-3 production, we did not observe a difference between the groups (**Figure 5**).

Adipogenic Differentiation of MSCs

Bone marrow MSCs from both groups were induced to differentiate into adipocytes. It was observed that mesenchymal stem cells obtained from the bone marrow of mice have the capacity to differentiate into adipocytes, and this capacity, after 14 days of culture, was higher in cells obtained from malnourished animals when compared to control animals (**Figure 6**).

Discussion

This study indicates that protein malnutrition induced central and peripheral leukopenia, and these results are, in part, due to a hematopoiesis compromise resulting from changes in the hematopoietic cells as well as in the bone marrow MSCs.

We developed a protein malnourished model where animals induced to undernutrition consumed a reduced amount of protein. Because the animals from the control and malnourished groups consumed the same quantity of food, we established protein malnutrition when the control group received a diet that contained adequate protein while the experimental group received a protein-deficient diet. The minimum daily amounts of nutrients other than protein were ingested by the animals of the malnourished group. The animals from the malnourished group showed a marked loss, approximately 20%, of body weight with a reduction of protein, albumin and pre-albumin serum levels.

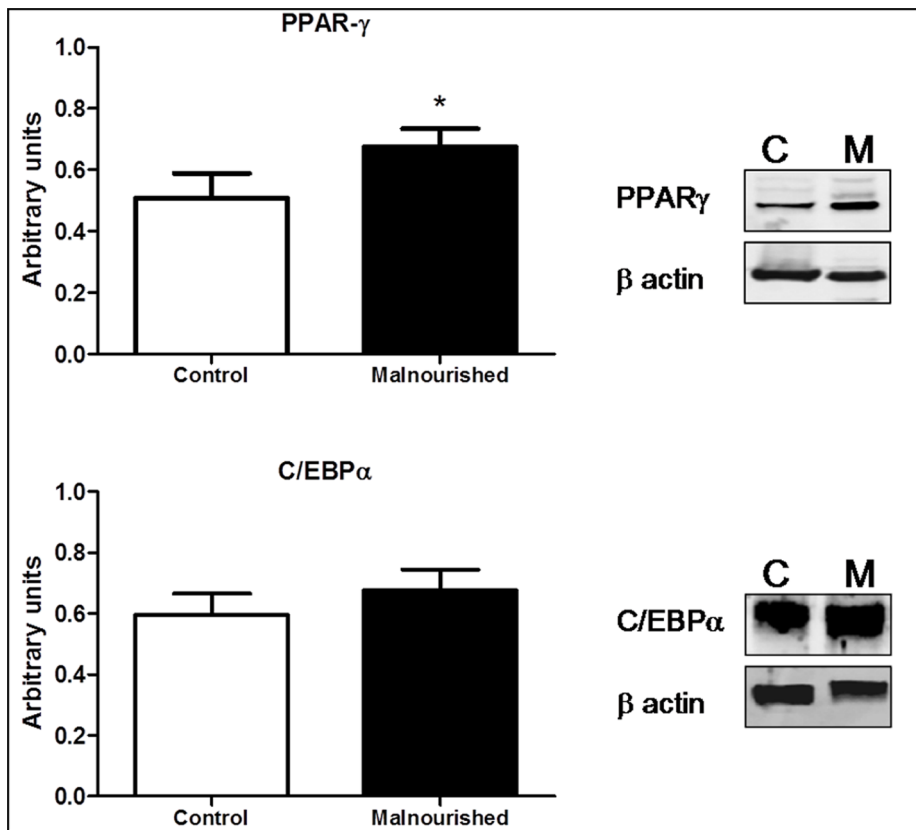


Figure 4. The results, expressed as the means with standard deviations, for the expression levels of PPAR- γ and C/EBP α in MSCs from control (n=6) and malnourished (n=6) animals as determined by Western blot analysis. The Western blot image was representative of six independent experiments with similar results. After densitometric analysis, results for PPAR- γ and C/EBP α protein expression were normalized to β -actin values. The number in brackets denotes the number of animals used in the experiment. * ($p \leq 0.05$) indicates where there was a significant difference between the control group and the malnourished group.
doi:10.1371/journal.pone.0058872.g004

Our results showed leukopenia with neutropenia associated with spleen and bone marrow hypoplasia. The first reports on blood leukopenia in protein malnutrition were made by Kornberg et al. [21] and Aschkenasy [22]. Even though the leukocyte response is variable, there is evidence that in situations in which malnutrition is not accompanied by other diseases, leukopenia is always present [3,23,24,25]. The bone marrow hypocellularity found in the current study was also reported by Flo et al. [26], Olmos [27] and our group [1,2,3]. This bone marrow hypoplasia is combined with a reduction of CD45⁺ and CD117⁺ cells. These results are in agreement with other studies showing that deletion mutation of CD45 reduced the number of primitive hematopoietic stem cells [28] and that the lack of CD117 receptors is associated with a quiescent and incapable hematopoietic reconstitution [29], which is in accordance with previous results from our group which showed that protein malnutrition produces qualitative and quantitative alterations in hematopoiesis that are caused by a structural impairment of the bone marrow stroma and alterations in the hematopoietic progenitors' cell cycle with a higher number of cells in the G0/G1 phase [2].

MSCs are multipotent precursors and in the bone marrow give rise to cells that constitute the bone marrow stroma; our results showed that MSCs were isolated and that no contamination with hematopoietic cells was observed. The CFU-F assay did not show differences between the groups as well as the production of IL-3, a cytokine capable of stimulating proliferation, differentiation, and

survival of hematopoietic stem cells [29]. However, our results showed that MSCs from malnourished animals showed a reduced capacity to produce G-CSF and GM-CSF, whereas the production of SCF was increased. The literature reports [30,31,32,33] that the lack of SCF production by accessory cells or the absence of receptors for this growth factor in hematopoietic stem cells leads to a hematopoietic failure, showing that MSCs have an important function in the regulation of the hematopoietic niche [34,35]. The commitment to the expression of CD117⁺ and CD45⁺ hematopoietic cells in the malnourished animals could be explained by an increased production of SCF and a decreased production of G-CSF and GM-CSF by the MSCs. Evidence shows that MSCs are able to support the expansion and differentiation of the hematopoietic stem cells due to their capability to produce cytokines [34,36,37]. Thinking of this capability, we hypothesized that the increased production of SCF could be related primarily in maintenance of the hematopoietic stem/progenitor cell pool, once this cell pool is compromised by protein malnutrition states and cells are arrested in G0/G1 phases of the cell cycle [2]. Therefore, the increase of SCF observed in MSCs from the malnourished animals could be because the reduced expression of CD117 receptors in hematopoietic cells and the increase in SCF would have the effect to try to stimulate the proliferation of hematopoietic stem and progenitor cells.

Concerning the reduced production of G-CSF and GM-CSF by MSCs from the malnourished animals, this can also be explained

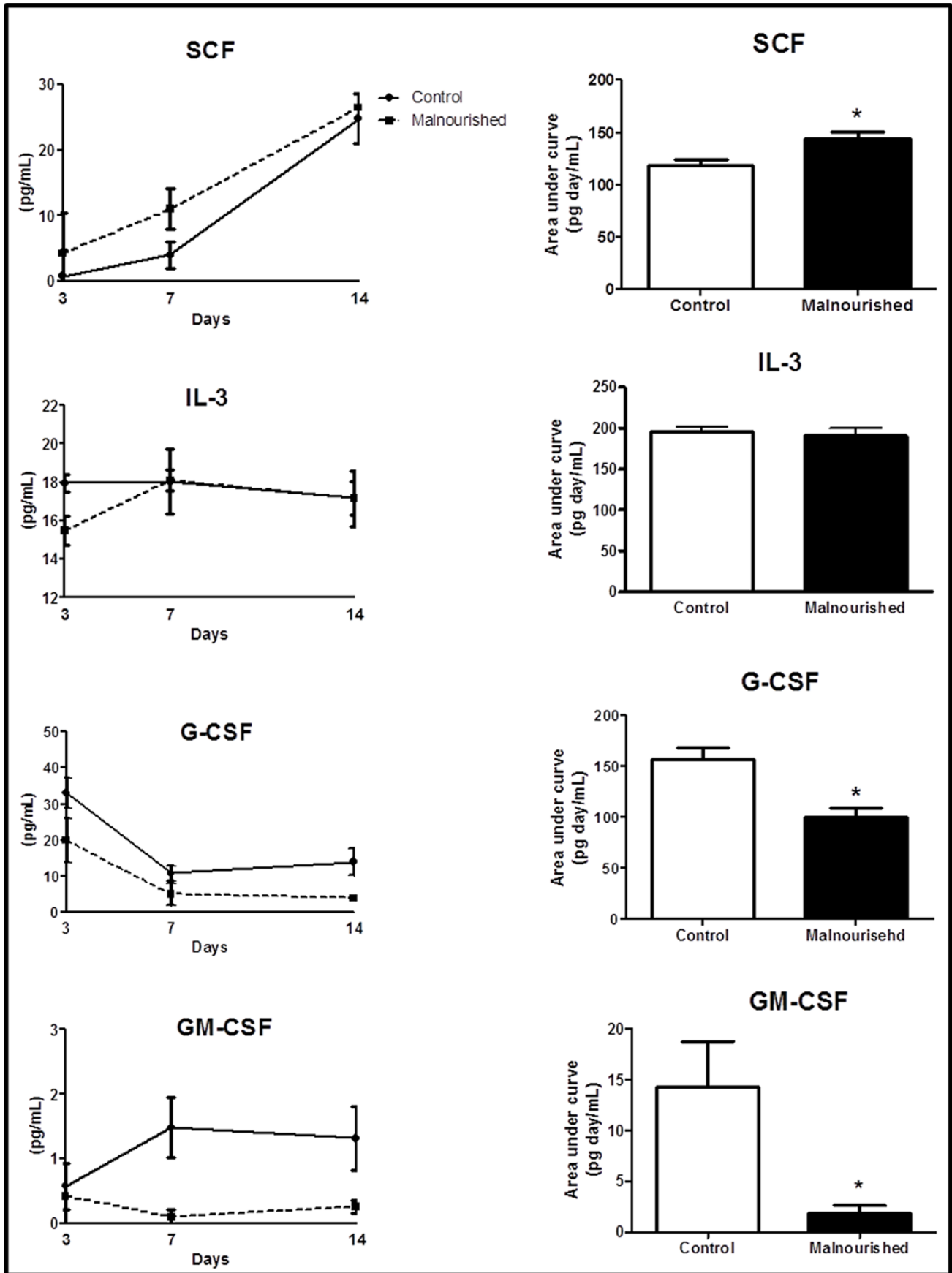


Figure 5. The results are expressed as the means with standard deviations and the area-under-the-curve of the production kinetics of SCF, IL-3, G-CSF and GM-CSF in MSC from control (n=6) and malnourished (n=6) animals cultured for 14 days. The number between the brackets denotes the number of samples evaluated per group in each timepoint studied. *(p ≤ 0.05) indicates where there was a significant difference between the control group and the malnourished group.
doi:10.1371/journal.pone.0058872.g005

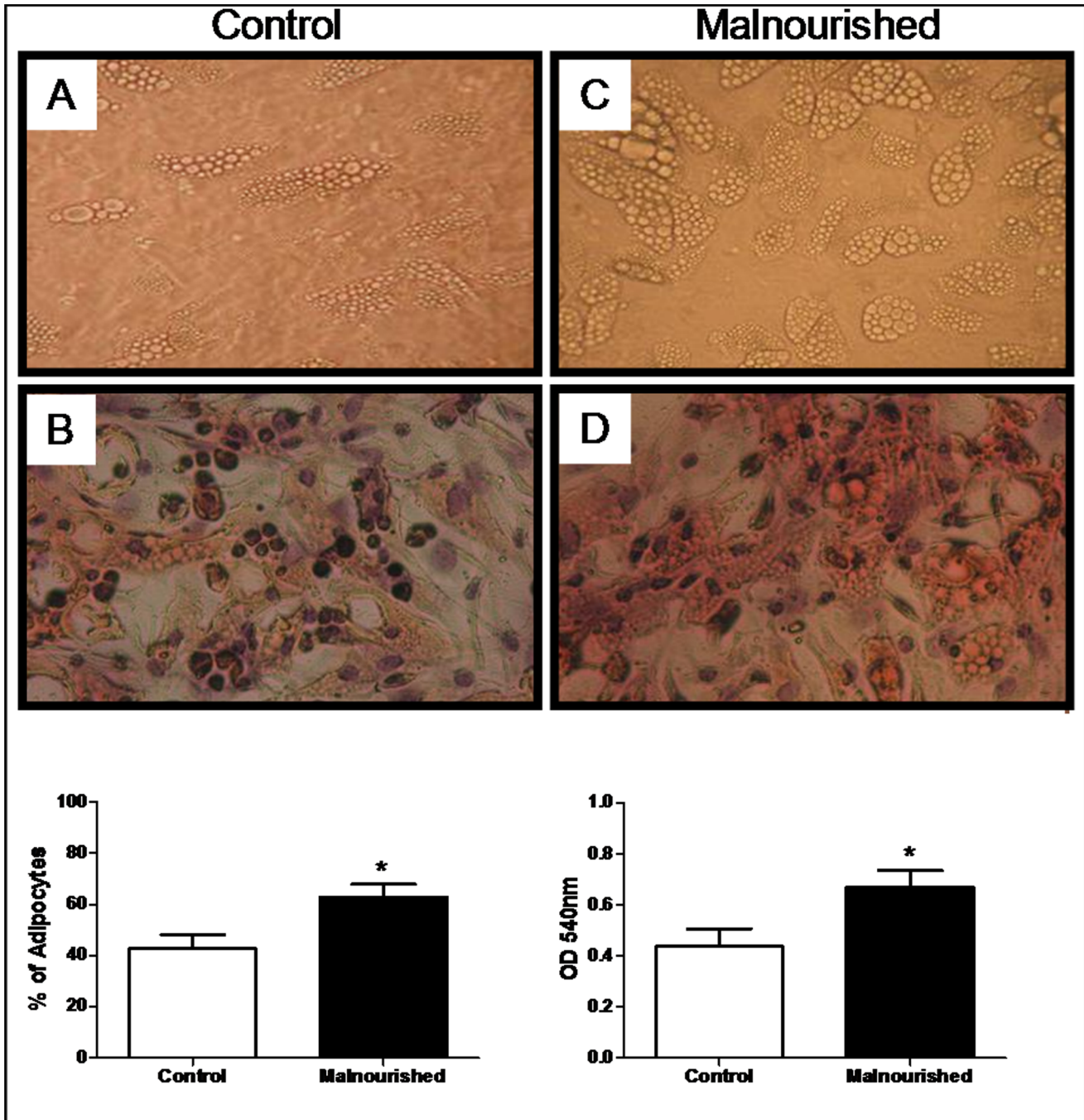


Figure 6. MSCs cultures from control and malnourished animals induced to adipogenic differentiation. (A) Cell culture morphology of differentiated MSCs from control animals cultured in adipogenic media (x 100); (B) Oil red O positive cells on day 14 after adipogenic differentiation of control MSCs. The red parts are lipid-rich vacuoles, the blue ones are nuclei counterstained with the standard May-Grunwald Giemsa solutions (x 100); (C) Cell culture morphology of differentiated MSCs from malnourished animals cultured in adipogenic medium (x 100); (D) Oil red O positive cells on day 14 after adipogenic differentiation of malnourished MSCs. The red parts are lipid-rich vacuoles, the blue ones are nuclei counterstained with the standard May-Grunwald Giemsa solutions (x 100). Representative pictures from control (n=6) and malnourished groups (n=6). The results showing the graphic percentage of quantified adipocytes and the graphic Oil red quantification from control (n=6) and malnourished (n=6) animals are expressed as the means with standard deviations. The number in brackets denotes the number of animals used in the experiment. *(p ≤ 0.05) indicates where there was a significant difference between the control group and the malnourished group.
doi:10.1371/journal.pone.0058872.g006

by the reduced stem/progenitor cell pool because G-CSF and GM-CSF are growth factors that act on proliferation but primarily on the granulocytic and monocytic differentiation [38], and their reduced production could be responsible for the commitment to granulopoiesis commonly observed in protein malnutrition states [1,2].

Protein malnutrition produces both qualitative and quantitative alterations of both the stromal components and the extracellular matrix of bone marrow, inducing a decrease in hematopoiesis [1,2]. Evidence shows bone marrow hypoplasia in protein malnutrition states, and our results are in agreement with these findings, where bone marrow hypoplasia was observed in the malnourished animals and was associated with this hypoplasia. We hypothesized that an increase in the adipogenic bone marrow state could in part be an explanation for the bone marrow failure in protein malnutrition states because the increase in adipocytes in the bone marrow microenvironment has the capability to negatively modulate hematopoiesis, as previously reported by Naveiras [9].

To test the hypothesis that increased marrow adiposity may be a consequence of bone marrow hypoplasia, we isolated MSCs from the bone marrow and differentiated these cells into adipocytes *in vitro*. Our results showed that the MSCs isolated from malnourished animals showed a higher capability to differentiate into adipocytes when cultured in a specific medium containing an adipogenic cocktail.

The activation of certain transcription factors is essential for cellular commitment to a particular lineage. Adipogenic differentiation is accompanied not only by alterations in cell morphology but also by transcriptional activation, including that of PPAR- γ and C/EBP α [11,39], as well as an increase in the sterol regulatory element-binding protein (SREBP) that has been identified as an important transcription factor regulating lipogenesis in multiple tissues [40].

References

- Xavier JG, Favero ME, Vinolo MA, Rogero MM, Dagli ML, et al. (2007) Protein-energy malnutrition alters histological and ultrastructural characteristics of the bone marrow and decreases haematopoiesis in adult mice. *Histol Histopathol* 22: 651–660.
- Borelli P, Barros FE, Nakajima K, Blatt SL, Beutler B, et al. (2009) Protein-energy malnutrition halts hemopoietic progenitor cells in the G0/G1 cell cycle stage, thereby altering cell production rates. *Braz J Med Biol Res* 42: 523–530.
- Fock RA, Blatt SL, Beutler B, Pereira J, Tsujita M, et al. (2009) Study of lymphocyte subpopulations in bone marrow in a model of protein-energy malnutrition. *Nutrition* 10: 1021–1028.
- Fock RA, Vinolo MA, de Moura Sá Rocha V, de Sá Rocha LC, Borelli P (2007) Protein-energy malnutrition halts the expression of TLR-4/MD-2 and CD14 receptors in peritoneal macrophages and reduces the synthesis of TNF- α in response to lipopolysaccharide (LPS) in mice. *Cytokine* 40: 105–114.
- Bianco P (2011) Bone and the hematopoietic niche: a tale of two stem cells. *Blood* 117: 5281–5288.
- Méndez-Ferrer S, Michurina TV, Ferraro F, Mazloom AR, Macarthur BD, et al (2010) Mesenchymal and haematopoietic stem cells form a unique bone marrow niche. *Nature* 466: 829–834.
- Zapata AG, Alfaro D, García-Ceca J (2012) Biology of stem cells: The role of microenvironments. *Adv Exp Med Biol* 741: 135–151.
- Gimble JM, Robinson CE, Wu X, Kelly KA (1996) The function of adipocytes in the bone marrow stroma: an update. *Bone* 19: 421–428.
- Naveiras O, Nardi V, Wenzel PL, Hauschka PV, Fahey F, et al. (2009) Bone-marrow adipocytes as negative regulators of the haematopoietic microenvironment. *Nature* 460: 259–263.
- Sekiya I, Larson BL, Vuoristo JT, Cui JG, Prockop DJ (2004) Adipogenic differentiation of human adult stem cells from bone marrow stroma (MSCs). *J Bone Miner Res* 19: 256–264.
- Rosen ED, Walkey CJ, Puigserver P, Spiegelman BM (2000) Transcriptional regulation of adipogenesis. *Genes Dev* 14: 1293–1307.
- Tontonoz P, Hu E, Spiegelman BM (1994) Stimulation of adipogenesis in fibroblasts by PPAR gamma 2, a lipid-activated transcription factor. *Cell* 79: 1147–1156.
- Vituri CL, Alvarez-Silva M, Trentin AG, Borelli P (2000) Alterations in proteins of bone marrow extracellular matrix in undernourished mice. *Braz J Med Biol Res* 33: 889–895.
- Reeves PG, Nielsen FH, Fahey GC Jr (1993) AIN-93 purified diets for laboratory rodents: final report of the American Institute of Nutrition ad hoc writing committee on the reformulation of the AIN-76A rodent diet. *J Nutr* 123: 1939–1951.
- Ward PG (1963) A Micro-Kjeldahl procedure for field use. *J Med Lab Technol* 20: 191–195.
- Livak KJ, Schmittgen TD (2001) Analysis of relative gene expression data using real-time quantitative PCR and the 2(-Delta Delta C(T)) Method. *Methods* 25: 402–408.
- Friedenstein AJ (1976) Precursor cells of mechanocytes. *Int Rev Cytol* 47: 327–359.
- Friedenstein AJ, Chailakhjan RK, Lalykina KS (1970) The development of fibroblast colonies in monolayer cultures of guinea-pig bone marrow and spleen cells. *Cell Tissue Kinet* 3: 393–403.
- Caplan AI (1991) Mesenchymal stem cells. *J Orthop Res* 9: 641–650.
- Javazon EH, Beggs KJ, Flake AW (2004) Mesenchymal stem cells: paradoxes of passaging. *Exp Hematol* 32: 414–425.
- Kornberg A, Daft FS, Sebrell WH (1946) Granulocytopenia and Anemia in Rats Fed Diets of Low Casein Content. *Science* 103: 646–648.
- Aschkenasy A (1957) On the pathogenesis of anemias and leukopenias induced by dietary protein deficiency. *Am J Clin Nutr* 5: 14–25.
- Catchatourian R, Eckerling G, Fried W (1980) Effect of short-term protein deprivation on hemopoietic functions of healthy volunteers. *Blood* 55: 625–628.
- Landgraf MA, Martinez LL, Rastelli VM, Franco Mdo C, Soto-Suazo M, et al. (2005) Intrauterine undernutrition in rats interferes with leukocyte migration, decreasing adhesion molecule expression in leukocytes and endothelial cells. *J Nutr* 135: 1480–1485.
- Martí J, Armadans L, Vaqué J, Segura F, Schwartz S (2001) Protein-calorie malnutrition and lymphocytopenia as predictors of hospital infection in the elderly. *Med Clin* 116: 446–450.
- Fló J, Elias F, Benedetti R, Massouh E (1996) Reversible effects on B and T cells of the gut-associated lymphoid tissues in rats malnourished during suckling: impaired induction of the immune response to intra-Peyer patches immunization with cholera toxin. *Clin Immunol Immunopathol* 80: 147–154.
- Olmos S, Reinoso MF, Márquez MG, Roux ME (2001) Cytogenetic studies in bone marrow cells from Wistar rats in protein malnutrition. *Metabolism* 50: 1025–1029.

28. Shivtiel S, Kollet O, Lapid K, Schajnovitz A, Goichberg P, et al. (2008) CD45 regulates retention, motility, and numbers of hematopoietic progenitors, and affects osteoclast remodeling of metaphyseal trabeculae. *J Exp Med* 205: 2381–2395.
29. Ortiz M, Wine JW, Lohrey N, Ruscetti FW, Spence SE, et al. (1999) Functional characterization of a novel hematopoietic stem cell and its place in the c-Kit maturation pathway in bone marrow cell development. *Immunity* 10: 173–182.
30. Mourcin F, Grenier N, Mayol JF, Lataillade JJ, Sotto JJ, et al. (2005) Mesenchymal stem cells support expansion of in vitro irradiated CD34(+) cells in the presence of SCF, FLT3 ligand, TPO and IL3: potential application to autologous cell therapy in accidentally irradiated victims. *Radiat Res* 164: 1–9.
31. Kimura T, Sakabe H, Tanimukai S, Abe T, Urata Y, et al. (1997) Simultaneous activation of signals through gp130, c-kit, and interleukin-3 receptor promotes a trilineage blood cell production in the absence of terminally acting lineage-specific factors. *Blood* 90: 4767–4778.
32. Liesveld JL, Broudy VC, Harbol AW, Abboud CN (1995). Effect of stem cell factor on myelopoiesis potential in human Dexter-type culture systems. *Exp Hematol* 23: 202–209.
33. Bernstein ID, Andrews RG, Zsebo KM (1991) Recombinant human stem cell factor enhances the formation of colonies by CD34+ and CD34+lin- cells, and the generation of colony-forming cell progeny from CD34+lin- cells cultured with interleukin-3, granulocyte colony-stimulating factor, or granulocyte-macrophage colony-stimulating factor. *Blood* 77: 2316–2321.
34. Li T, Wu Y (2011) Paracrine molecules of mesenchymal stem cells for hematopoietic stem cell niche. *Bone Marrow Res* 2011: 353878.
35. Carrancio S, Blanco B, Romo C, Muntion S, Lopez-Holgado N, et al. (2011) Bone marrow mesenchymal stem cells for improving hematopoietic function: an in vitro and in vivo model. Part 2: Effect on bone marrow microenvironment. *PLoS One* 6: e26241.
36. Dormady SP, Bashayan O, Dougherty R, Zhang XM, Basch RS (2001) Immortalized multipotential mesenchymal cells and the hematopoietic microenvironment. *J Hematother Stem Cell Res* 10: 125–140.
37. Nauta AJ, Kruisselbrink AB, Lurvink E, Willemze R, Fibbe WE (2006) Mesenchymal stem cells inhibit generation and function of both CD34+-derived and monocyte-derived dendritic cells. *J Immunol* 177: 2080–2087.
38. Fernández-Varón E, Villamayor L (2007) Granulocyte and granulocyte macrophage colony-stimulating factors as therapy in human and veterinary medicine. *Vet J* 174: 33–41.
39. Musri MM, Parrizas M (2012) Epigenetic regulation of adipogenesis. *Curr Opin Clin Nutr Metab Care* 15: 342–349.
40. Jeon Ti, Osborne Tf (2012) Srebps: Metabolic Integrators in Physiology and Metabolism. *Trends Endocrinol Metab* 23: 65–72.
41. Sekiya I, Larson BL, Vuoristo JT, Cui JG, Prockop DJ (2004) Adipogenic differentiation of human adult stem cells from bone marrow stroma (MSCs). *J Bone Miner Res* 19: 256–264.