



RESEARCH

Open Access

Development of clinically relevant orthotopic xenograft mouse model of metastatic lung cancer and glioblastoma through surgical tumor tissues injection with trocar

Xi Feng Fei^{1,2,3,4}, Quan Bin Zhang^{3,4}, Jun Dong^{2,3}, Yi Diao², Zhi Min Wang^{3,4}, Ru Jun Li², Zi Cheng Wu², Ai Dong Wang^{2,3}, Qing Lan^{2,3}, Shi Ming Zhang^{*1} and Qiang Huang^{*2,3,4}

Abstract

Objective: Orthotopic models are important in cancer research. Here we developed orthotopic xenograft mouse model of metastatic lung cancer and glioblastoma with a specially designed system.

Methods: Tiny fragments of surgical tumors were implanted into the mice brain with a trocar system. Immunohistochemistry was performed to detect brain tumor stem cells among glioblastoma tissues, including both the original and resulting ones with monoclonal antibody against CD133.

Results: Besides the constant high take rates in both models; brain transplants perfectly resembled their original tumors in biological behaviors. The brain tumor stem cells, positively stained with CD133 were found, though not frequently, in both original and resulting glioblastoma tissues.

Conclusions: Orthotopic model established with a trocar system is effective and injection of tumor tissues containing stem cells promise the forming of new tumor mass when grafted.

Background

Animal models have been extremely critical in the understanding of cancer and in the pre-clinical testing of new antitumor drugs since 1960s when it was first developed by implanting human colon carcinoma to nude mice [1]. The utility of each particular model, nevertheless, depends on how close it replicates the original tumor. To the present days, several kinds of animals, like dog, monkey, and murine, have ever been tested and compared between each other for the purpose of finding the best host for transplantation [2-4]. The results indicated that though the extent to which murine models recapitulate

the features encountered in human tumor is still controversial, considering their reproducibility and availability, they still constitute a valuable in vivo system for the pre-clinical studies.

Not surprisingly, an orthotopic model is much more superior to a heterotransplantation model in that the former recapitulates the original tumor more likely. As far as human brain tumors are concerned, the orthotopic models currently available are established either by stereotaxic injection of cell suspensions [5-8] or implantation in solid piece through complicated craniotomy [9,10]. Taking into consideration both the advantages and disadvantages of the current methods, there is still much room for improvement. Recently, high success rate of model development of brain tumor were established using cell suspensions directly derived from fresh patient brain tumors indicating the important role of stromal cells in tumor formation [11].

* Correspondence: shmzhang2004@yahoo.com.cn, hq1936@yahoo.com.cn

¹ Neurosurgical Department, Brain and Nerve Research Laboratory, The First Affiliated Hospital of Soochow University, 188 Shizi Street, 215006, Suzhou, China

² Neurosurgical Department, Brain Tumor Research Laboratory, The Second Affiliated Hospital of Soochow University, 1055 Sanxiang Road, 215004 Suzhou, China

Full list of author information is available at the end of the article

In the current study, we developed orthotopic xenograft mouse model by injecting tiny tumor tissue, but not cell suspensions, into the brain of mouse with a special trocar system. It is argued that the organ-specific microenvironment plays a determining role in the growth patterns of transplanted tumors [12,13]. To observe the growth patterns of different tumor types implanted to the same organs, we chose primary glioblastoma multiforme and brain metastasis for transplantation in this study. The growth of xenografts in the mice brain was observed with MRI. Histological study was also performed to explore and compare the growth features of these two biologically distinctive malignances. With the identification of CD133 positive cells from brain tumor tissues, more and more reliable evidences support the assumption that CD133⁺ cell is the tumor initiating cells or cancer stem cells [14-16]. In this study, we also examined the distribution of CD133⁺ cells in both the original and implanted tumors of glioblastoma multiforme.

Methods

Brain tumor specimens

Our study was approved by the Medical Review Board of Soochow University Medical School. The donor tissues obtained at surgery after written consent consisted of typical glioblastoma multiforme (WHO classification 2000) and brain metastasis from lung adenocarcinoma. Tumor tissue was dissected free of blood clot, washed, and minced into 0.5-mm-thick slices for grafting.

Reagents and equipments

Alcian blue/PAS dyeing reagent was provided by pathology department of our hospital; Rabbit anti-carcinoembryonic antigen (CEA) monoclonal antibody, horseradish peroxidase (HRP), and 3,3'-Diaminobenzidine (DAB) were offered by pathology department of Changhai hospital, affiliated hospital of the second military medical university; EGFR (BD Bioscience Co.); CD133 (Miltenyi Biotec); 24# trocar (B. Braun Melsungen AG); Micro-drill 18000-17 (Fine Science Tools); Supraconduction nuclear magnetic resonance formatter equipped with micro-23 windings (Philips Achieva).

Animals

Four to six-week-old male and female NC nude mice at an average weight of 25 g were purchased from the Center for Experimental Animals, Soochow University (certificate No. SY X K (Su) 2007-0035). All the animals were bred and maintained in the Specific Pathogen Free Animal Care Facility, Nasal1000 grade. The National Institutes of Health guidelines for the care and use of laboratory animals were followed in all animal procedures.

Orthotopic tumor tissue transplantation and further propagation

For transplantation, we designed a very simple but ingenious injection system. This system includes a 24# trocar and a specifically made propeller. The propeller matches well with the rear part of the trocar and is used to pack the tumor tissue in the trocar cannula. When the trocar filled with tumor tissue is navigated by stereotaxic instrument to the injection destination, trocar needle was introduced to slowly and smoothly push tumor tissue out. The injected volume could be strictly controlled according to the length on the cannula which is quantitated by 2 mm³ water (Figure 1). In this study, all the surgical procedures were carried out under general anesthesia by intraperitoneal injection of 10% chloral hydrate (200 mg/kg). A small burr hole, 2 mm in diameter was made 2 mm to the midline and 0.5 mm anterior to bregma using microskull drill. Trochar packed with donor tissue was navigated to a depth of 3.5 mm via skull hole. Tumor tissue, 2 mm³ per mouse, was slowly and smoothly injected into the caudate/putamen nuclei of the mouse brain. Skull hole was sealed with bone wax and scalp sutured. The implanted tumors in the mouse brain were passed from animal to animal following the same procedure described above for six generations in the metastasis group (15 mice for the first generation and 10 mice for the other generations) and thirteen generations in glioblastoma multiforme group (10 mice per generation). Take rate of each model and survival time of each mice were counted. As mice usually died in 2 days after cachexia occurs, survival time of tumor-bearing mice was calculated as 1 day + days from transplantation to sacrifice.

Magnetic resonance imaging (MRI) of nude mice implanted with tumor tissues

After anesthetized as the same way described above, mice were fixed in micro-23 winding mice MRI equipment. A 1.5 T clinical Signa version 5.5.1. (General Electric MS) was used for brain imaging. Five apparently normal mice were examined on day 10, 15, 20, 25 and day 30 post tumor implantation to detect the growth of the grafted tumor fragments. In enhanced scanning, 0.5 ml diethylene triaminepentaacetic acid gadolinium (Gd-DTPA 0.25 mmol/L) was intraperitoneally injected 10 minutes before examination. Scanning parameters was as follows: MATRIX 224X224; layer thickness: 3.0 mm; space between layers: 0.3 mm T1WI: TR260ms and TE24ms.

Histological examination

Four mice that received orthotopic implantation of human glioblastoma multiforme were sacrificed on day 5, 10, 15, or 20 to study brain tumor take. The other mice were sacrificed when they became cachectic or at various

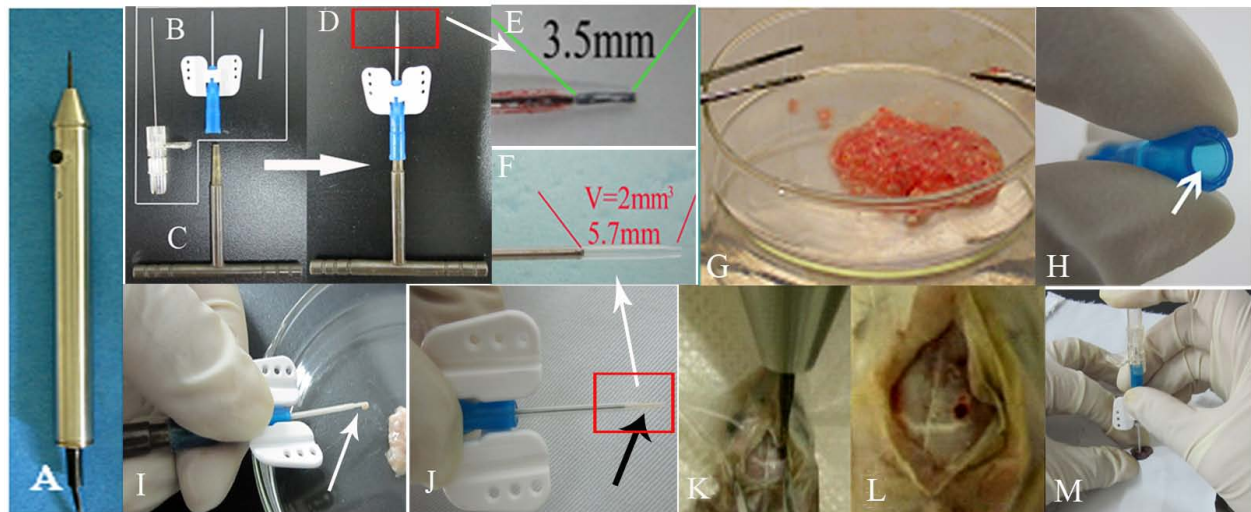


Figure 1 Illustration of nude mice orthotopic transplantation with glioma tissue. A: micro-skull drill; B: trochar; C tissue propeller; inset in D and E: the depth of injection into mouse brain; G comminuted tumor tissue; H put some tissue into the rear part of trochar (see arrow); I: tumor tissues was packed to the trochar cannula with propeller for transplantation, superfluous tumor tissue were overflowed from the distal end of trochar under the pressure of propeller (see arrow); F and inset in J: exactly 2 mm³ tumor tissue left for transplantation (see black arrow); K: drill the hole; L: the burr hole; M: the tumor tissue (J) was injected slowly into brain via the hole (I), then pulled out the trochar slowly, sealed the hole with bone wax and sutured the scalp.

post-implantation times for morphological studies. The overview of tumor mass and its relationship with adjacent host brain structures was observed with a naked eyes or low power lens. The brain tissues harboring xenografts were fixed in 4% phosphate-buffered paraformaldehyde for 18 hours, embedded in paraffin. Sections of all paraffin-embedded blocks were stained with hematoxylin-eosin (HE) and with Alcian blue/PAS. As CEA is the potent marker for lung adenocarcinoma and EGFR is specially expressed in glioblastoma multiforme, we also performed immunohistochemical staining to examine the expression of CEA and EGFR in xenografts derived from metastatic adenocarcinoma or glioblastoma multiforme.

The CD133 expression in the original human glioblastoma and its transplants

CD133⁺ tumor cells are rare among tumor tissues, but regarded as the initiating cells in the brain tumor formation. In this study, the glioblastoma tissues used for and resulted from orthotopic implantation were obtained processed and immunostained for CD133 expression as described by Christensen et al [17].

Results

Efficient transplantation and high take rates were achieved

Due to the improvement of procedure, it took only about 5 minutes to finish the implantation (from anesthesia to closure of skull hole) in one mouse. Moreover, no postoperative death happened. None of the mice with xenograft

developed focal neurological signs in the early and intermediate periods, however, at the end of observation, all the tumor-bearing mice presented with reduced food intake, dull response, emaciated figure, skin fold and cachexia. The take rates in brain metastasis group increased gradually, with 33% for first generation, 50% for the second generation, 70% for the third generation, and 100% from the 4th generation (table 1). In glioblastoma group, the results were even more encouraging with success rates of 90% for the first and second generations. From 3rd generation, the tumorigenicity rate was steadily up to 100% (table 2). Survival time of mice with metastasis grafts varied considerably from mouse to mouse of the first three generations, but tended to be similar from the 4th generation (38.0 ± 0.9 days $n = 10$, see table 1). Mice in the glioblastoma group demonstrated the same tendency, having a survival time of 23.9 ± 1.7 days (see table 2) from the 5th generation ($n = 10$).

Implanted tumors could be revealed by MRI

MRI scanning revealed tumor mass as early as day 20 for metastasis group, and day 15 for glioblastoma multiforme. The imaging features of xenografts from brain metastasis were apparently different from those of xenografts from glioblastoma multiforme. The former has a distinct boundary with adjacent normal parenchyma, while glioblastoma multiforme was featured by vague border and finger-like edema (Figure 2). Post-Gd-DTPA sagittal T1W sequences revealed a typical enhancement in both malignancies.

Table 1: Take rates in brain metastasis group and survival time of tumor-bearing mice.

Generation	No. of mice	No. of tumor-bearing mice ¹	Take rate(%)	survival time(d)
1	15	5	33	47.6 ± 1.8
2	10	5	50	42.2 ± 1.8
3	10	7	70	40.8 ± 1.2
4	10	10	100	38.0 ± 0.9
5	10	10	100	38.6 ± 1.0
6	10	10	100	37.8 ± 0.9

¹Each mouse was implanted with one graft (Site: right caudate nucleus of nude mice)

Take rates in brain metastasis group from lung adenocarcinoma and survival time of tumor-bearing mice in the intracranial xenotransplantation

Gross morphology

Xenografts derived from brain metastasis were gray, soft and featured by sharp boundary with adjacent normal parenchyma. In glioblastoma models, tumors were gray or yellowish, measuring from 6 to 8 mm in largest diameter. Besides invasion to ipsilateral hemisphere, contralateral spread was also observed though it was not frequent. Extension of tumor mass to the skull and scalp soft tissue was not found (Figure 3).

Histopathologic examination of implanted tumors

In HE sections, features common to xenografts of brain metastasis included: a) sharp boundary between tumor mass and surrounding normal brain tissue (Figure 4A and 4B); b) round and densely arranged tumor cells; c) abun-

dant caryocinesia; d) abundant acid mucus secretion by tumor cells that were dyed blue by Alcian blue and red by PAS; e) positive immunostaining for CEA (Figure 5A and 5B). Obviously, the transplantation of brain metastasis tissues into the nude mice brain produced tumor mass which perfectly recapitulated the original tumor type. In contrast to the xenografts derived from brain metastasis, the resulting tumors from human glioblastomas demonstrated variable cytoplasmic and nuclear pleomorphism on the preparations. Cellular forms ranged from fusiform, starlike to triangle with scant cytoplasm and densely hyperchromatic nuclei. Bizarre, multinucleated giant cells were frequently observed. Exuberant endothelial proliferation in combination with necrosis was signif-

Table 2: Take rates in glioblastoma group and survival time of tumor-bearing mice.

Generation	No. of mice	No. of tumor-bearing mice ¹	Take rate(%)	survival time(d)
1	10	9	90	32.4 ± 2.1
2	10	9	90	30.4 ± 2.2
3	10	10	100	29.9 ± 2.1
4	10	10	100	28.4 ± 2.7
5	10	10	100	23.9 ± 1.7
6	10	10	100	23.0 ± 0.9
7	10	10	100	22.8 ± 1.3
8	10	10	100	21.7 ± 1.3
9	10	10	100	23.2 ± 0.6
10	10	10	100	22.0 ± 1.8
11	10	10	100	21.3 ± 1.2
12	10	10	100	21.4 ± 1.8
13	10	10	100	22.4 ± 0.9

¹Each mouse was implanted with one graft(Site: right caudate nucleus of nude mice)

Take rates in glioblastoma group and survival time of tumor-bearing mice in the intracranial xenotransplantation

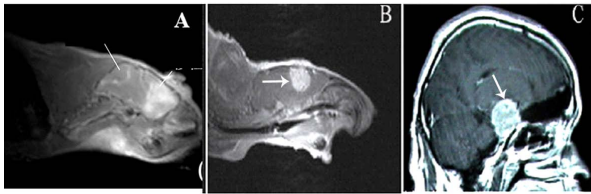


Figure 2 Orthotopic xenografts in brain of mice revealed by MRI.
 A + B: the border of the orthotopic graft of human glioblastoma (white lines) was vague (A), in contrast to the sharp and clear edge of orthotopic graft of human brain metastasis (B white arrow). Post-Gd-DTPA sagittal T1W sequences revealed a typical enhancement in both A and B; C: Post-Gd-DTPA sagittal T1w sequences image of clinical case with brain metastasis of human lung adenocarcinoma (white arrow). The image was very similar to B.

icant (Figure 4C and 4D). EGFR, one of the important markers for glioblastoma multiforme, was strongly expressed on membrane and in cytoplasm of tumor cells (Figure 5C).

CD133 + cells were seen in both the original tumors and the implanted tumors

Immunohistochemical staining for CD133 protein was performed in sections made from the original glioblastoma multiforme and its successive xenografts. As a result, CD133 positive cells were rare but observed in each tumor tissue. It is rather intriguing that CD133 positive cells were prone to distribute at the border between main tumor mass and the adjacent normal brain parenchyma (Figure 6).

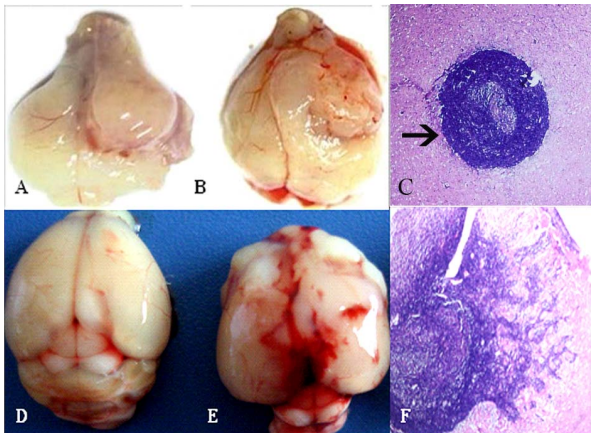


Figure 3 Brain of tumor-bearing mice observed by eyes and under lower power lens. A-C: brain metastasis tissues was implanted in right caudate nucleus. Tumor had grown to the brain surface of right hemisphere. The boundary between tumor and normal tissues was very clear seen by eyes (A and B) or under microscope (C arrow). D-F: the transplantation position of glioma was right caudate nucleus too. There was no tumor can be seen on the surface but brain edema was apparent. Under microscope Tumor cells were seen extensively invading to adjacent brain tissues.

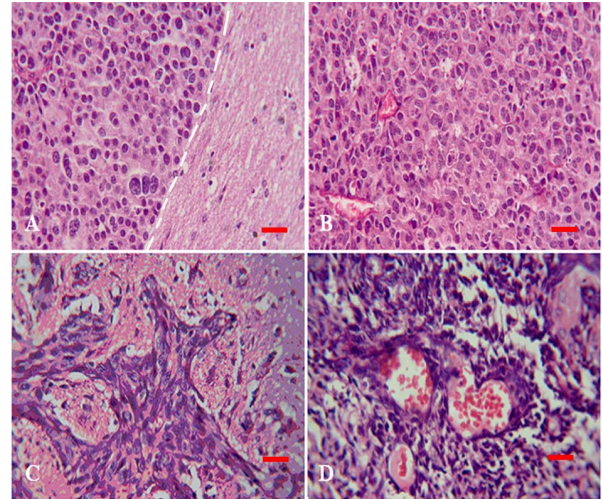


Figure 4 Transplantation tumor observed by HE staining. Tumor cells of brain metastasis (A and B) were small round, easy to see caryocinesia, rare to see multinucleated giant cell and did not form glandular cavity in somewhere (B). Boundary (white dash line) between tumor (left) and normal brain tissues (right) was very clear (A). There was no apparent boundary can be seen between glioma tumor and surrounding brain tissues (C and D) and tumor cells invaded like chicken wire. Tumor cells were fusiform, star-like, triangle and so on. Abundant vessels shown in tumor tissues and the endothelial cells were hyperplasia (D).

Discussion

In the previous published orthotopic animal models of brain malignances, the tumors were transplanted by cell suspension injection [5-8] or surgical implantation via craniotomy [9,10]. Cell suspension injection has once been widely adopted due to the distinctive advantage of micro-invasion. However, to acquire single cell suspensions, trypsin is usually added to dissociated tumor tissues or adherent cell lines, which inevitably reduced the viability of the tumor cells. Secondly, because of the small cranial cavity of mouse, the total volume of injected cell suspension is limited to or less than 20 μ l [5-8], which means the relatively small number of could-be implanted tumor cells. Furthermore, cell suspensions are deprived of stromal component which is actually critical in the tumor growth. Based on these listed reasons, it is not surprising that implantation of tumor cell suspension resulted in an overall take rate of less than 70% despite the recent refinery in transplantation procedure. Partly because the injection pressure or speed couldn't be well controlled, the tumor cell suspension may flow into the ventricle, and/or flow back along the shaft of the needle into the arachnoidal space. This may account for why clinically GBM metastasis rarely happen, but most human GBM tumor cell lines intrinsically possess metastatic potential. Moreover, GBM models produced by most cell lines without stromal component always failed

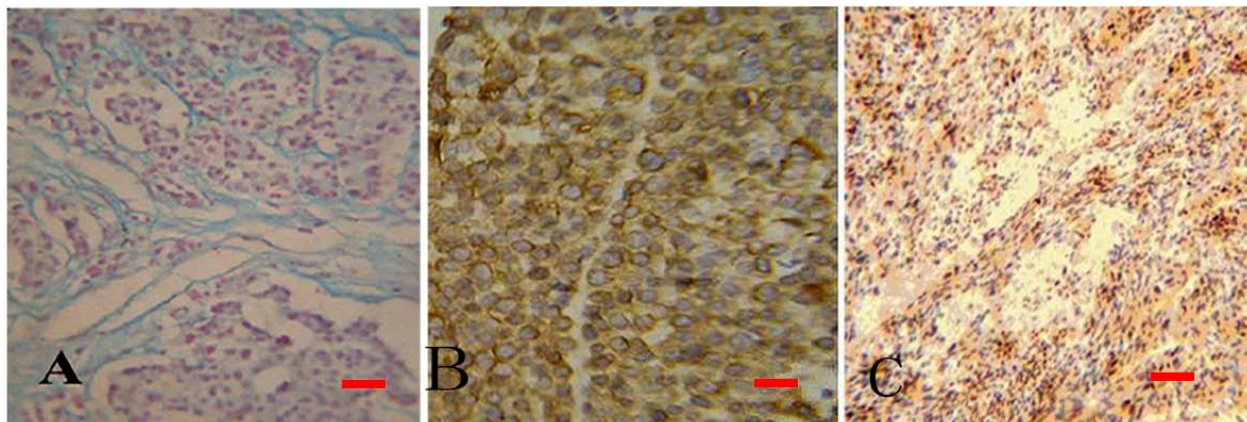


Figure 5 Markers expressed in xenografts of brain metastasis. A: stroma was stained deep blue with Alcian blue staining indicating mucus secreted by tumor cells was acid. B: immunochemistry of CEA in brain metastasis showed nearly all tumor cells highly expressed CEA compared to normal tissues. C: immunochemistry of EGFR in glioma indicated most tumor cells expressed EGFR.

to invade the contiguous brain, growing by rather expansive than diffusely infiltrative pattern. Taken together, from the take rate to the recapitulation potentials, animal model via cell suspension injection of established cell lines seems far from desirable.

Tumor implantation in solid piece is theoretically superior to cell suspension injection in the following aspects: 1) when the transplantation volume is same, solid piece contains tumor cells almost 20 times more than cell suspension does; 2) besides the tumor cells, the stroma was implanted at the same time, which provides a microecosystem that favorites the cell growth and the maintenance of the biological features of original tumors. Tumor transplantation in solid piece was firstly reported by Shapiro et al [18], however, the success rate is unexpectedly low, with an overall take rate of 16% for human grade II-IV

astrocytomas, and 24% for GBMs. Recently, Antunes et al [10] significantly improved the take rate by indirect transplantation of human glioblastoma; however, he also observed extracranial extension and scalp soft tissue infiltration of the resulting tumors, which never happens clinically. Considering the trauma to the mice, the complicated procedures, and other problems, tumor fragment grafting via craniotomy still has much room for improvement.

Enlightened by the advantages of cell suspension injection and disadvantages of tumor fragment grafting, we designed to implant tumor in solid piece through injection. It is a simple but ingenious modification which resulted in the following advantages in our model when compared with implantation via craniotomy: 1) being minimally invasive as only a very small skull hole is

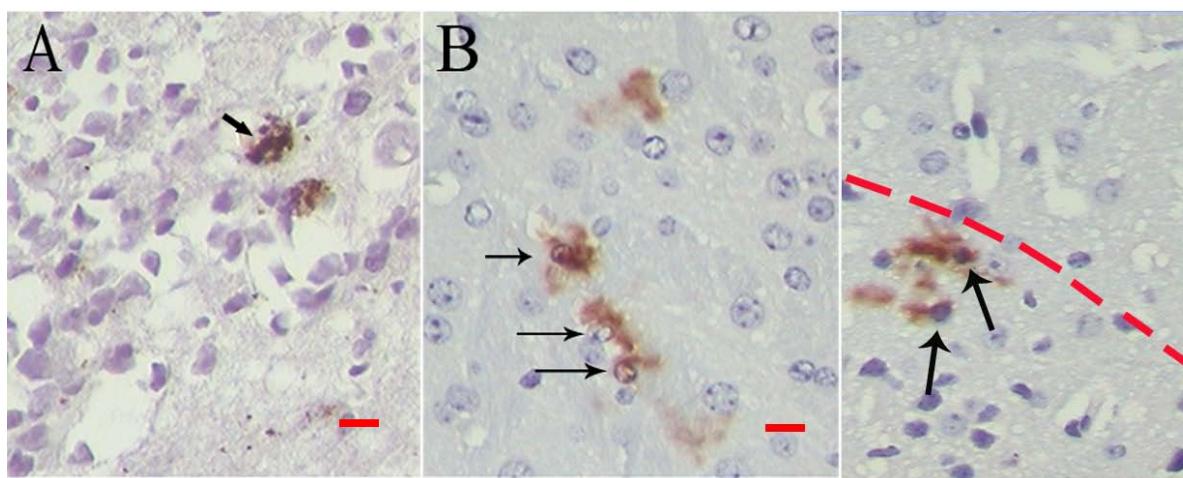


Figure 6 CD133 expressed in both original tumors and the implanted tumors. Tumor sections were stained against human specific CD133 by common immunochemistry, rare cells were positive for CD133 both in original tumors (A) and transplantation tumors (B). It could also be seen that CD133 positive cells distributed at the border (red dash line) between tumor mass(bottom) and the adjacent brain parenchyma (top in C).

enough; 2) high efficiency due to the simplified manipulation; 3) being highly homogeneous, especially in survival time as the volume of implantation could be strictly controlled; 4) no extracranial extension of tumor mass, which is sometimes though not frequently encountered in cases of craniotomy; 5) more reasonable mean survival times of 38 days for metastasis model and 24 days for glioblastoma multiforme model. In some GBM mouse models via craniotomy [10], the mean survival time is as long as one year, which is absolutely beyond the rational ranges when the survival time of a patients with brain metastasis or glioblastoma multiforme and the average expectation life time of a tumor-spared mouse are taken into consideration.

Operative mortality in preliminary experiment was high to 16.7%, some died because of traumatic intracranial hemorrhage during operation, and other died because of encephaledema after operation. We do our best to reduce the surgical trauma to a minimum and make zero death rates in perioperative period, though there was some operation-related mortality in the preliminary experiments. These deaths were mainly due to traumatic intracranial hemorrhage and/or brain edema after operation. To avoid these accidents, we took the following measures: 1) 22# trocar was replaced by 24# trocar; 2) transplantation volume was reduced to 2 mm³; and 3) the tumor tissues were pushed as smoothly as possible.

Take rate is not the only criterion in evaluation of an orthotopic animal model, while how close a model can replicate the original tumors is more essential. As brain metastasis and primary glioblastoma are two biologically different malignancies in the central nervous system, we selected them both as grafts in this study to assess this novel method. When compared between the two models, metastasis xenografts were evidently differentiated from glioblastoma xenograft in many aspects, however, when compared with their original malignancies, both models demonstrated unquestionable similarity in histological structure features and growth patterns. Laurent et al. [10] performed both heterotransplantation and orthotopic transplantation of human glioblastoma, and concluded that the organ-specific environment play a determining role in growth and invasive properties. In the current study, two different malignancies were transplanted into the same organ; however, the resulting tumors didn't demonstrate the similar growth patterns. So, it is more plausible and acceptable that it is the malignance itself but not environment that plays a determining role in the tumor growth patterns and other biological behaviors.

With the identification of brain tumor stem cells from tumor mass or cell lines, it is reported that as rare as 10² CD133+ glioma cells could generate tumor mass, while as much as 10⁶ CD133- glioma cells failed to form tumor

mass after injected to the mouse brain. The fact that cell suspension injection of most established cell lines often yields well-circumscribed intracranial tumors which are different from the original tumor, coupled with the complicated procedure of cell suspension injection precludes tumor stem cells as a desirable transplant [19-21]. In this study, the immunohistochemistry with monoclonal antibody against CD133 revealed that not only the original tumors, but the resulting tumors were positively stained for CD133. This result means the tumor tissues contained brain tumor stem cells and functioned as a tumor stem cell pool. It is reported that biological behaviors of tumor stem cells are highly dependent on their microenvironment [22,23], in another word, CD133 negative tumor cells and stromal components also play an important role in the potential of tumor stem cells to re-establish the original tumor. Taken together, tumor stem cells, other tumor cells and stromal components make a concerted contribution to the growth of tumor mass in transplantation animal model.

Conclusions

In conclusion, orthotopic xenograft mouse model of metastatic lung cancer and glioblastoma was established successfully by our specially designed trocar implantation system and it makes the orthotopic transplantation of brain tumor into nude mice simpler, easier but more efficient. When a large amount of homogeneous animal models are required in experiments, especially in new antitumor drug tests, this method of tumor tissue injection promises the capacity to meet the demands.

Competing interests

The authors declare that they have no competing interests.

Authors' contributions

YD and RJL build the animal model. XFF, YD and ZCW carried out the immunoassays. ADW participated in the design of the study and performed the statistical analysis. QH, ZMW and QL conceived of the study, and participated in its design. XFE, QBZ, SMZ and JD helped to draft the manuscript. All authors read and approved the final manuscript.

Acknowledgements

This work was funded by grants from the national Basic Research Program of China (973 Program:2010CB529403) and the Natural Science Foundation of China (NO. 30872654, 30772241), and the Natural Science Foundation of Jiangsu Province (NO. BK2007507, BK2008173).

Author Details

¹Neurosurgical Department, Brain and Nerve Research Laboratory, The First Affiliated Hospital of Soochow University, 188 Shizi Street, 215006, Suzhou, China, ²Neurosurgical Department, Brain Tumor Research Laboratory, The Second Affiliated Hospital of Soochow University, 1055 Sanxiang Road, 215004 Suzhou, China, ³Department of Pharmacology and Laboratory of Aging and Nervous Diseases, Soochow University School of Medicine, 199 Renai Road, 215123, Suzhou, China and ⁴Neurosurgical department, Suzhou Kowloon Hospital of Shanghai Jiaotong University School of Medicine, 118 Wansheng Street, 215021, Suzhou, China

Received: 6 May 2010 Accepted: 29 June 2010

Published: 29 June 2010

References

1. Rygaard J, Povlsen CO: **Heterotransplantation of a human malignant tumour to "Nude" mice.** *Acta Pathol Microbiol Scand* 1969, **77**:758-760.
2. Mickey DD, Stone KR, Wunderli H, Mickey GH, Vollmer RT, Paulson DF: **Heterotransplantation of a human prostatic adenocarcinoma cell line in nude mice.** *Cancer Res* 1977, **37**:4049-4058.
3. Candolfi M, Curtin JF, Nichols WS, Muhammad AG, King GD, Pluhar GE, McNiel EA, Ohlfest JR, Freese AB, Moore PF, Lerner J, Lowenstein PR, Castro MG: **Intracranial glioblastoma models in preclinical neuro-oncology: neuropathological characterization and tumor progression.** *J Neurooncol* 2007, **85**(2):133-148.
4. Tabuchi K, Nishimoto A, Matsumoto K, Satoh T, Nakasone S, Fujiwara T, Ogura H: **Establishment of a brain-tumor model in adult monkeys.** *J Neurosurg* 1985, **63**(6):912-916.
5. DeArmond SJ, Stowring L, Amar A, Coopersmith P, Dougherty D, Spencer D, Mikkelsen T, Rosenblum M: **Development of a non-selecting, non-perturbing method to study human brain tumor cell invasion in murine brain** *J Neurooncol.* 1994, **20**:27-34.
6. Engebraaten O, Hjortland GO, Hirschbert H, Fodstad O: **Growth of precultured human glioma specimens in nude rat brain.** *J Neurosurg* 1999, **90**:125-132.
7. Yamada S, Khankaldyyan V, Bu X, Suzuki A, Gonzalez-Gomez I, Takahashi K, McComb JG, Laug WE: **A method to accurately inject tumor cells into the caudate/putamen nuclei of the mouse brain.** *Tokai J Exp Clin Med* 2004, **29**:167-173.
8. Jia Zf, Pu PY, Kang CS, Wang GX, Zhang ZY, Qiu MZ, Huang Q: **Effect of SEPT7 on the malignant phenotype of transplanted glioma in nude mice.** *Chin J Oncol* 2008, **30**:3-7.
9. Taillandier L, Antunes L, Angioi-Duprez KS: **Models for neuro-oncological preclinical studies:solid orthotopic and heterotopic grafts of human gliomas into nude mice.** *J Neurosci Methods* 2003, **125**:147-157.
10. Antunes L, Angioi-Duprez KS, Bracard SR, Klein-Monhoven NA, Le Faou AE, Duprez AM, Plénat FM: **Analysis of tissue chimerism in nude mouse brain and abdominal xenograft models of human glioblastoma multiforme: what does it tell us about the models and about glioblastoma biology and therapy?** *J Histochem Cytochem* 2000, **48**:847-858.
11. Shu Q, Wong KK, Su JM, Adesina AM, Yu LT, Tsang YT, Antalffy BC, Baxter P, Perlaky L, Yang J, Dauser RC, Chintagumpala M, Blaney SM, Lau CC, Li XN: **Direct orthotopic transplantation of fresh surgical specimen preserves CD133+ tumor cells in clinically relevant mouse models of medulloblastoma and glioma.** *Stem Cells* 2008, **26**(6):1414-1424.
12. Chung LW, Baseman A, Assikis V, Zhau HE: **Molecular insights into prostate cancer progression: the missing link of tumor microenvironment.** *J Urol* 2005, **173**(1):10-20.
13. Martin MD, Figletonn B, Lynch CC, Wells S, McIntyre JO, Piston DW, Matrisian LM: **Establishment and quantitative imaging of a 3D lung organotypic model of mammary tumor outgrowth.** *Matrisian Clin Exp Metastasis* 2008, **25**(8):877-885.
14. Singh SK, Clarke ID, Terasaki M, Bonn VE, Hawkins C, Squire J, Dirks PB: **Identification of a cancer stem cell in human brain tumors [J].** *Cancer Res* 2003, **63**(18):5821-5828.
15. Singh SK, Hawkins C, Clarke ID, Squire JA, Bayani J, Hide J, Henkelman RM, Cusimano MD, Dirks PB: **Identification of human brain tumor initiating cells [J].** *Nature* 2004, **432**(7015):396-401.
16. Huang Q, Zhang QB, Dong J, Wu YY, Shen YT, Zhao YD, Zhu YD, Diao Y, Wang AD, Lan Q: **Glioma stem cells are more aggressive in recurrent tumors with malignant progression than in the primary tumor, and both can be maintained long-term in vitro.** *BMC Cancer* 2008, **8**:304.
17. Christensen K, Schroder HD, Kristensen BW: **CD133 identifies perivascular niches in grade II-IV astrocytomas.** *J Neurooncol* 2008, **90**(2):157-170.
18. Shapiro WR, Basler GA, Chernik NL, Posner JB: **Human brain tumor transplantation into nude mice.** *J Natl Cancer Inst* 1979, **62**(3):447-453.
19. Pilkington GJ, Bjerkvig R, De Ridder L, Kaaijk P: **In vitro and in vivo models for the study of brain tumour invasion.** *Anticancer Res* 1997, **17**:4107-4109.
20. Saris SC, Bigner SH, Bigner DD: **Intracerebral transplantation of a human glioma line in immunosuppressed rats.** *J Neurosurg* 1984, **60**:582-588.
21. Galli R, Binda E, Orfanelli U, Cipelletti B, Gritti A, Vitis SD, Fiocco R, Foroni C, Dimeco F, Vescovi A: **Isolation and Characterization of Tumorigenic, Stem-like Neural Precursors from Human Glioblastoma.** *Cancer Res* 2004, **64**:7011-7021.
22. Li L, Neaves WB: **Normal stem cells and cancer stem cells: the niche matters.** *Cancer Res* 2006, **66**:4553-4557.
23. Rajasekhar VK, Dalerba P, Passegue E, Lagasse E: **Stem Cells, Cancer, and Context Dependence.** *Stem Cells* 2007, **26**:292-298.

doi: 10.1186/1756-9966-29-84

Cite this article as: Fei *et al.*, Development of clinically relevant orthotopic xenograft mouse model of metastatic lung cancer and glioblastoma through surgical tumor tissues injection with trocar *Journal of Experimental & Clinical Cancer Research* 2010, **29**:84

Submit your next manuscript to BioMed Central and take full advantage of:

- Convenient online submission
- Thorough peer review
- No space constraints or color figure charges
- Immediate publication on acceptance
- Inclusion in PubMed, CAS, Scopus and Google Scholar
- Research which is freely available for redistribution

Submit your manuscript at
www.biomedcentral.com/submit

