

ARTICLE

Received 12 Jun 2015 | Accepted 21 Oct 2015 | Published 21 Dec 2015

DOI: 10.1038/ncomms9995

OPEN

Endothelial protein kinase MAP4K4 promotes vascular inflammation and atherosclerosis

Rachel J. Roth Flach¹, Athanasia Skoura², Anouch Matevosian¹, Laura V. Danaï^{1,†}, Wei Zheng², Christian Cortes², Samit K. Bhattacharya³, Myriam Aouadi^{1,†}, Nana Hagan^{1,†}, Joseph C. Yawe¹, Pranitha Vangala¹, Lorena Garcia Menendez^{1,†}, Marcus P. Cooper⁴, Timothy P. Fitzgibbons⁴, Leonard Buckbinder² & Michael P. Czech¹

Signalling pathways that control endothelial cell (EC) permeability, leukocyte adhesion and inflammation are pivotal for atherosclerosis initiation and progression. Here we demonstrate that the Sterile-20-like mitogen-activated protein kinase kinase kinase 4 (MAP4K4), which has been implicated in inflammation, is abundantly expressed in ECs and in atherosclerotic plaques from mice and humans. On the basis of endothelial-specific MAP4K4 gene silencing and gene ablation experiments in *Apoe*^{-/-} mice, we show that MAP4K4 in ECs markedly promotes Western diet-induced aortic macrophage accumulation and atherosclerotic plaque development. Treatment of *Apoe*^{-/-} and *Ldlr*^{-/-} mice with a selective small-molecule MAP4K4 inhibitor also markedly reduces atherosclerotic lesion area. MAP4K4 silencing in cultured ECs attenuates cell surface adhesion molecule expression while reducing nuclear localization and activity of NFκB, which is critical for promoting EC activation and atherosclerosis. Taken together, these results reveal that MAP4K4 is a key signalling node that promotes immune cell recruitment in atherosclerosis.

¹Program in Molecular Medicine, Worcester, Massachusetts 01605, USA. ²Cardiovascular and Metabolic Research Unit, Cambridge, Massachusetts 02139, USA. ³Worldwide Medicinal Chemistry Pfizer, Cambridge, Massachusetts 02139, USA. ⁴Division of Cardiovascular Medicine, University of Massachusetts Medical School, Worcester, Massachusetts 01605, USA. † Present address: Department of Biology, Koch Institute for Integrative Cancer Research, Massachusetts Institute of Technology, Cambridge, Massachusetts 02139, USA (L.V.D.); Department of Medicine, Integrated Cardio Metabolic Centre, Karolinska Institutet, NOVUM, Blickagången 6, 141 57 Huddinge, Sweden (M.A.); Hoffmann-La Roche, Inc., Nutley, New Jersey 07110, USA (N.H.); Pfizer, Cambridge, Massachusetts 02139, USA (L. G. M.). Correspondence and requests for materials should be addressed to M.P.C. (email: Michael.Czech@umassmed.edu).

Atherosclerosis is a progressive disease that is often considered an inflammatory response to chronic vessel injury, which is mediated in part by perturbed vascular flow and oxidized lipoprotein-mediated vascular inflammation. In the case of acute injury, endothelial cytokine secretion and leukocyte adhesion molecule upregulation promotes monocyte extravasation from blood vessels into the sub-endothelial space; however, in atherosclerosis, this becomes pathological as macrophages accumulate as foam cells^{1–3}. Cell surface adhesion molecule upregulation, particularly vascular cell adhesion molecule-1 (VCAM-1), is required to mediate monocyte extravasation in response to acute injury. However, chronic vascular inflammation can increase VCAM-1 expression in the vessel wall, which has been implicated in atherosclerotic lesion initiation and progression^{4–8}. This series of dysfunctions contributes to cardiovascular events such as myocardial infarct, ischaemia and stroke, which are leading causes of death^{1–3}.

Mitogen-activated protein kinase kinase kinase 4 (MAP4K4; also known as Nck-interacting kinase (NIK) and hepatocyte progenitor kinase-like/germinal centre kinase-like kinase (HGK)) belongs to the sterile-20 protein kinase family and is most closely related to protein kinases Misshapen-like kinase 1 (MINK) and Traf2 and Nck-interacting kinase (TRIK). Though original reports demonstrated a role for MAP4K4 upstream of the c-Jun NH₂-terminal kinase (JNK) signalling cascade as a MAP4K^{9–11}, studies from our laboratory have demonstrated that MAP4K4 is not in fact required for MAPK activation^{12–14}. In endothelial cells (ECs), tumour necrosis factor (TNF)- α and other cytokines induce the expression of several inflammatory genes including those encoding leukocyte adhesion molecules and chemokines¹⁵. Furthermore, inhibiting upstream signalling cascades that promote adhesion molecule expression such as nuclear factor kappa light-chain enhancer of activated B cells (NF κ B) specifically in ECs ameliorates atherosclerosis progression¹⁶. Several studies implicate MAP4K4 as a proinflammatory kinase that is required to mediate the deleterious functions of TNF- α in multiple cell types^{13,17,18}. Recent

reports additionally suggest that endothelial MAP4K4 enhances endothelial permeability, which can promote inflammation and atherosclerosis progression¹⁹. However, the role of endothelial MAP4K4 in models of *in vivo* chronic inflammatory processes such as atherosclerosis has not yet been assessed. In this study, we observed that MAP4K4 expression and/or activity was increased in the aortas of mice and humans with atherosclerosis. Thus, we hypothesized that endothelial MAP4K4 might play a role in promoting this disease by facilitating endothelial activation in response to inflammatory stimuli.

Here, we present multiple points of evidence that reduction or loss of endothelial MAP4K4 expression profoundly ameliorates atherosclerotic lesion development in mice. Specifically, deletion of *Map4k4* in ECs in mice is accompanied by reduced aortic macrophage and chemokine content, reduced EC adhesion molecule expression as well as attenuated leukocyte homing to atherosclerotic plaques. Furthermore, MAP4K4 depletion in ECs lessens inflammatory capacity by reducing TNF- α -mediated permeability, leukocyte adhesion and leukocyte adhesion molecule expression. Finally, treating mice with a novel small-molecule inhibitor with high selectivity for MAP4K4 kinase activity ameliorates atherosclerosis progression and promotes regression in two distinct animal models. Thus, the data presented here indicate a central role for MAP4K4 in promoting vascular inflammation and atherosclerosis.

Results

MAP4K4 levels are increased in atherosclerosis. To assess whether *Map4k4* expression was altered by atherosclerotic risk factors such as obesity, mice were fed a standard chow or 60% high-fat diet (HFD) for 16 weeks, and then several tissues were isolated for quantitative reverse transcription (qRT)-PCR analysis. Interestingly, *Map4k4* messenger RNA (mRNA) expression was increased in several tissues including lung, spleen, heart and liver from HFD-fed mice compared with age-matched, chow-fed counterparts (Fig. 1a).

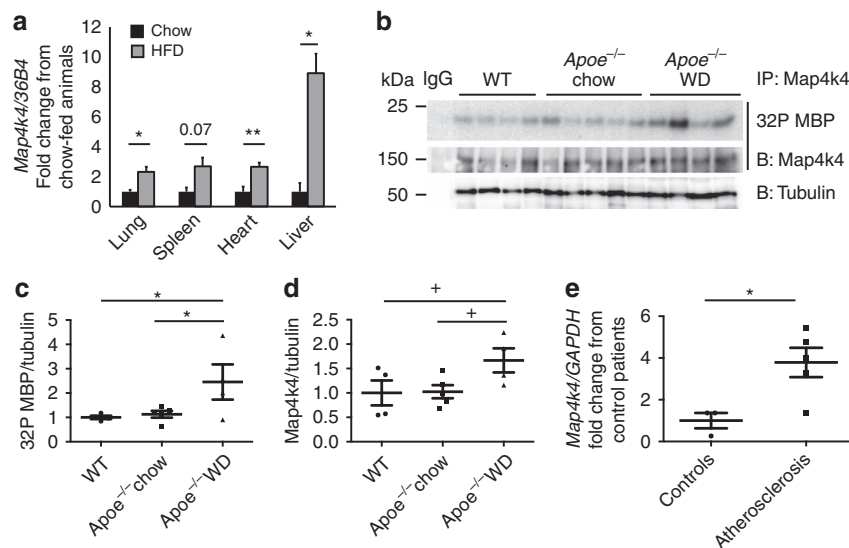


Figure 1 | Increased MAP4K4 expression in atherosclerosis. (a) Eight-to-ten-week-old mice were fed chow or 60% HFD for 16 weeks, messenger RNA (mRNA) was extracted from the indicated tissues, and quantitative RT-PCR was performed for *Map4k4* and normalized to *36b4*. The data represent the mean \pm s.e.m. (* $P < 0.05$, ** $P < 0.005$, $N = 3-7$). (b-d) Aortas were extracted from age-matched chow-fed wild-type or *Apoe*^{-/-} mice or WD-fed *Apoe*^{-/-} mice. (b) Immune-complex kinase assays were performed in *Map4k4* immunoprecipitates using MBP as an exogenous substrate. Lysates were immunoblotted for tubulin as a loading control. (c) Densitometric quantification of ³²P MBP as normalized to tubulin. (d) Densitometric quantification of immunoprecipitated *Map4k4* as normalized to tubulin (analysis of variance + $P = 0.05$, * $P < 0.05$, $N = 4-5$). (e) mRNA was isolated from normal human arteries or atherosclerotic plaques, and quantitative RT-PCR was performed for *MAP4K4* or *GAPDH* (* $P < 0.05$, $N = 3-5$).

To assess whether Map4k4 activity and expression was increased in animal models of atherosclerosis, whole aortas were isolated from chow-fed wild-type or *Apoe*^{-/-} mice and Western diet (WD)-fed *Apoe*^{-/-} mice, and immune-complex protein kinase assays were performed (Fig. 1b). Interestingly, Map4k4 protein kinase activity was increased concomitantly with Map4k4 protein expression in WD-fed *Apoe*^{-/-} mice compared with chow-fed animals (Fig. 1c–d). Finally, *MAP4K4* mRNA expression was assessed in human atherosclerotic plaques or non-diseased arteries by qRT-PCR. In atherosclerotic plaques, there was a significant 3.8-fold increase in *MAP4K4* mRNA expression compared with coronary or aortic arterial samples from human subjects who did not have atherosclerosis (Fig. 1e). These data are consistent with another recent large-scale human study that identified increased *MAP4K4* gene expression in atherosclerosis²⁰. These data provided rationale to examine whether there was a cell-type-specific role for MAP4K4 in atherosclerosis.

Mice lacking EC MAP4K4 are protected from atherosclerosis. Mice lacking MAP4K4 display embryonic lethality²¹. Thus, to assess whether endothelial MAP4K4 contributes to atherosclerosis development, endothelial-specific MAP4K4 knockout mice were generated by crossing MAP4K4 *flx/flx* animals with tamoxifen-inducible VE-cadherin cre mice²² (Fig. 2a). At 6–8 weeks of age, MAP4K4 *flx/flx* (*flx/flx*) or MAP4K4 *flx/flx* cre+ (MAP4K4 ECKO) animals were injected with tamoxifen (Fig. 2b). Immune-selected mouse lung ECs (MLECs) derived from MAP4K4 ECKO animals displayed markedly reduced MAP4K4 mRNA and protein expression, whereas cells that were not immune-selected displayed no reduction (Fig. 2c,d). Furthermore, MAP4K4 levels were unaltered in whole-blood leukocytes from these animals, confirming endothelial specificity (Fig. 2d).

MAP4K4 ECKO animals were then crossed with mice on the *Apoe*^{-/-} background and fed WD after tamoxifen administration as in Fig. 2b. MAP4K4 ECKO animals demonstrated a 54% reduction in lesion area at the aortic root (226.3 versus

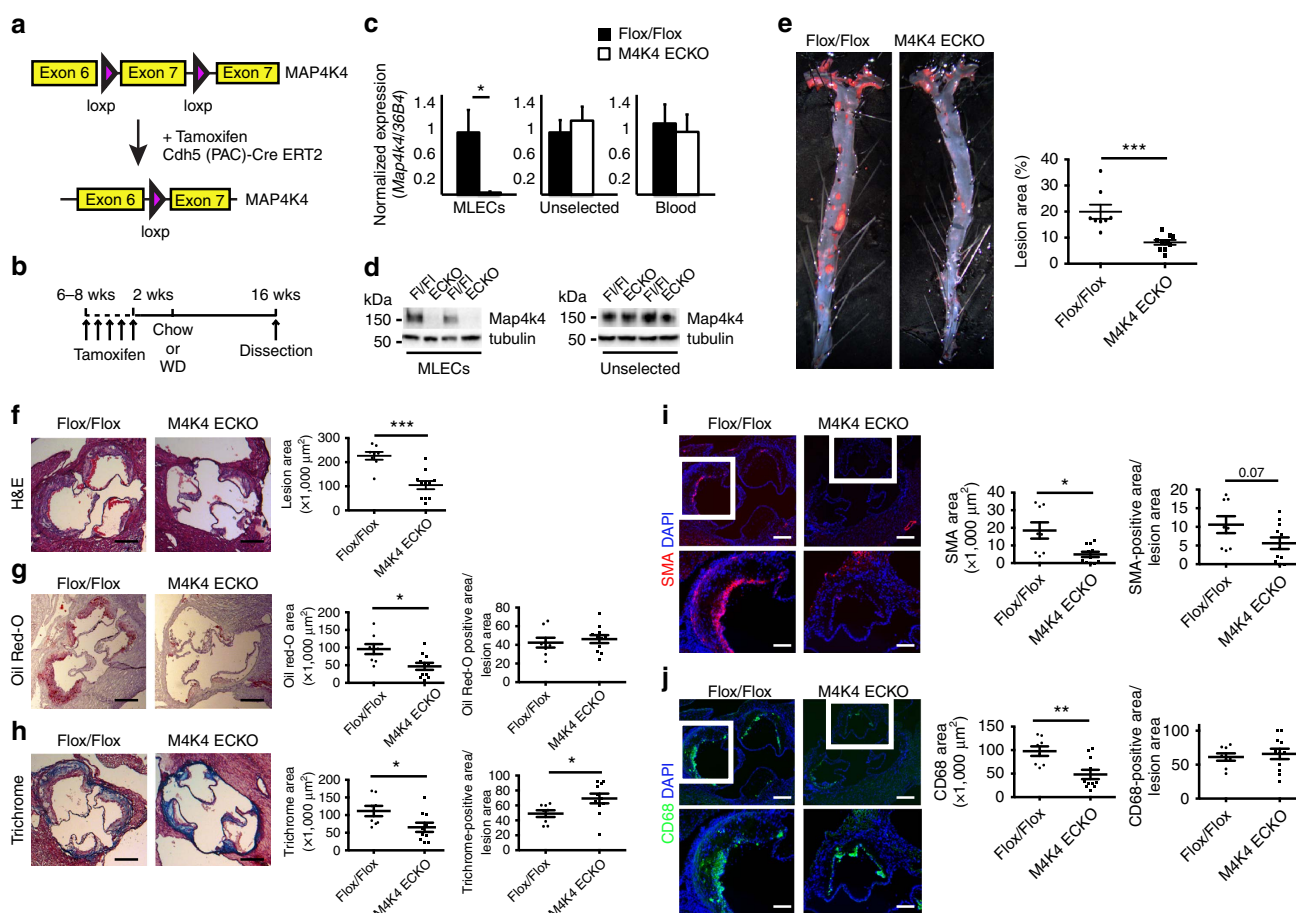


Figure 2 | Reduced atherosclerosis in M4K4 ECKO mice. Map4k4 *flx/flx* animals were crossed with Cdh5(PAC)-ERT2-Cre animals and injected with tamoxifen for 5 consecutive days at 6–8 weeks of age. (a) Cre-mediated Map4k4 exon-7 deletion. (b) Schematic of injection and feeding scheme. (c) Messenger RNA was extracted and qRT-PCR was performed for *Map4k4* in primary MLECs, the unselected, non-EC fraction of mouse lung cells and peripheral blood leukocytes. The data represent the mean \pm s.e.m. as normalized to *36b4* expression ($*P < 0.05$, $N = 6-8$). (d) Immunoblots were performed for Map4k4 or tubulin in immune-selected primary MLECs and the unselected, non-EC fraction of mouse lung cells. Western blots are representative of 6–8 animals per group. (e–j) *Flox/flox* and MAP4K4 ECKO mice were crossed with *Apoe*^{-/-} mice and fed a WD for 16 weeks as in b. (e) Left, Oil Red-O-stained *en face* aortic preparations from *flox/flox* and MAP4K4 ECKO animals. Right, quantification of Oil Red-O-stained area. Data represent the mean \pm s.e.m. ($***P < 0.0005$, $N = 8-10$). (f–j) Aortic root sections of *flox/flox* and MAP4K4 ECKO *Apoe*^{-/-} animals stained with (f) haematoxylin and eosin (H&E) (scale bar, 250 μ m), (g) Oil Red-O (scale bar, 250 μ m), (h) trichrome (scale bar, 250 μ m), (i) smooth muscle actin (scale bar, 250 μ m (top image); scale bar, 100 μ m (bottom image)) and (j) Cd68 (scale bar, 250 μ m (top image); scale bar, 100 μ m (bottom image)). Left panel, representative images. Right panels, quantification of stained area or as a percentage of lesion area. Data represent the mean \pm s.e.m. ($*P < 0.05$, $**P < 0.005$, $***P < 0.0005$, $N = 8-11$). DAPI, 4,6-diamidino-2-phenylindole.

104.9 × 1,000 μm²; Fig. 2f), and *en face* preparations revealed that the Oil Red-O-stained area was also reduced by 59% after WD (20.0% versus 8.2%; Fig. 2e). Plaque composition was investigated by staining the aortic roots of flox/flox and MAP4K4 ECKO animals for lipids, collagen, smooth muscle actin and the macrophage marker Cd68. Consistent with the reduction in overall lesion area, reduced staining for all of these parameters was observed in MAP4K4 ECKO aortic roots (Fig. 2g–j). Interestingly, collagen content as a percentage of plaque area was significantly enhanced in MAP4K4 ECKO animals (Fig. 2h). Furthermore, smooth muscle actin staining as a percentage of plaque area demonstrated a trend to reduced area in MAP4K4 ECKO animals

(Fig. 2i). These results suggest that consistent with the reduced plaque area, MAP4K4 ECKO mice may also demonstrate less advanced, more stable plaques than control littermates.

An additional model of endothelial MAP4K4 deletion was generated in which constitutively expressed cre recombinase expression under control of the VE-cadherin promoter drives endothelial-specific Map4k4 short hairpin RNA (shRNA) expression (Fig. 3a). MLECs from MAP4K4shRNA-VE-cadherin cre-expressing mice (MAP4K4 knock down (KD)) demonstrated a significant reduction, but not total ablation, of Map4k4 mRNA and protein expression compared with the MAP4K4shRNA mice that did not express cre (controls, Fig. 3b,c). MAP4K4 KD mice

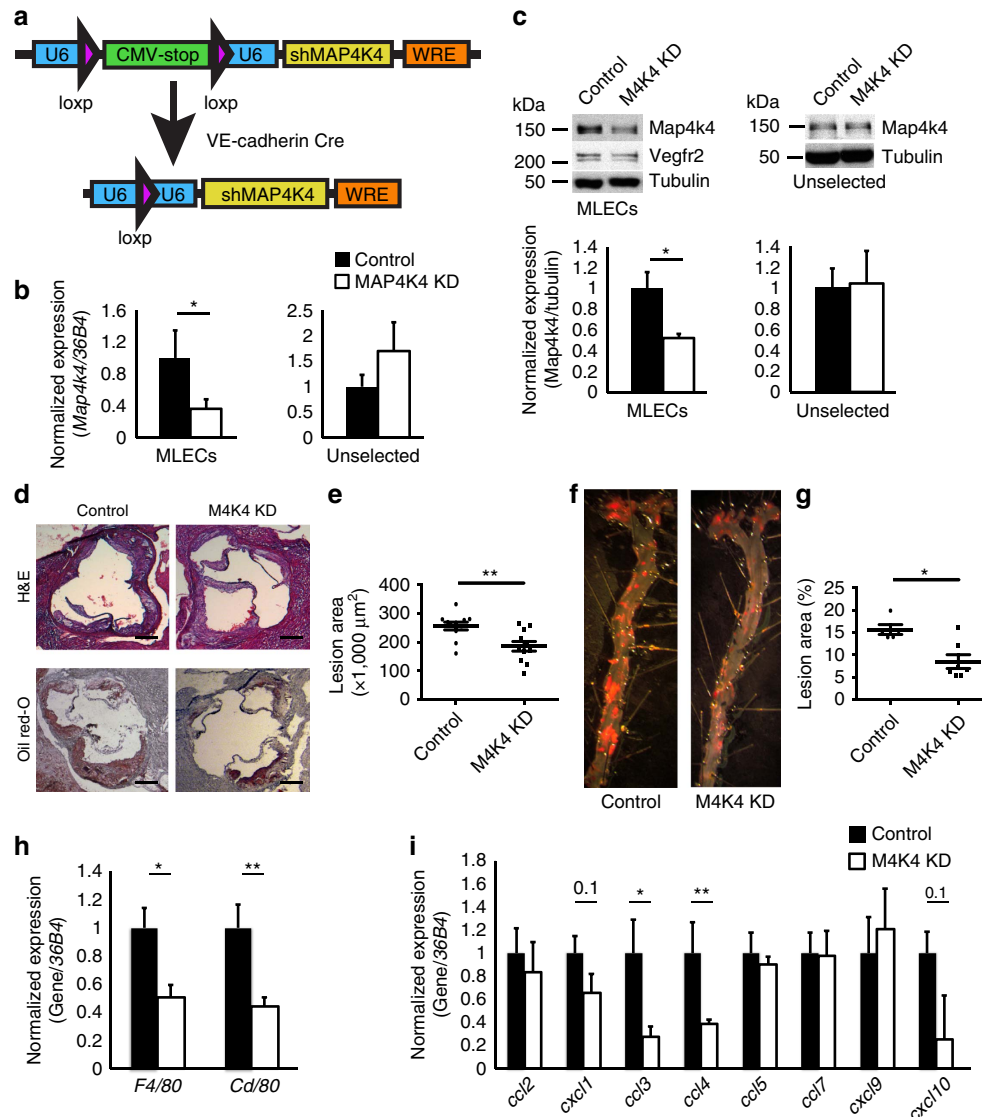


Figure 3 | Reduced atherosclerosis in M4K4 KD mice. (a) Schematic of the transgenic construct used to generate MAP4K4 KD animals. The U6 promoter becomes reconstituted after cre-mediated recombination to drive tissue-specific shRNA expression. (b,c) Primary lung endothelial cells (MLECs) were derived from control and MAP4K4 KD animals. (b) Messenger RNA (mRNA) was extracted and quantitative RT-PCR was performed for *Map4k4* in immune-selected or unselected cells. The data represent the mean ± s.e.m. as normalized to *36b4* expression (**P* < 0.05, *N* = 7). (c) Primary endothelial or unselected cell lysates were immunoblotted for Map4k4 and Vegfr2. Data represent the mean ± s.e.m. as normalized to tubulin expression (**P* < 0.05, *N* = 3–6). (d–g) MAP4K4 KD mice were crossed with *Apoe*^{−/−} mice and fed a WD for 16 weeks. (d) Aortic root sections of control and MAP4K4 KD animals stained with haematoxylin and eosin (H&E) (top) and Oil Red-O (bottom). Scale bar, 250 μm. (e) Quantification of aortic root lesion area. Data represent the mean ± s.e.m. (***P* < 0.005, *N* = 9,11). (f) Oil Red-O-stained *en face* aortic preparations from control and MAP4K4 KD animals. (g) Quantification of Oil red-O-stained area. Data represent the mean ± s.e.m. (**P* < 0.05, *N* = 5–7). (h–i) mRNA was prepared from whole aortas, and qPCR was performed. (h) Macrophage markers *F4/80* and *Cd68*. (i) Chemokines *Ccl2*, *Cxcl1*, *Ccl3*, *Ccl4*, *Ccl5*, *Ccl7*, *Cxcl9* and *Cxcl10*. Data represent the mean ± s.e.m. as normalized to *36b4* (**P* < 0.05, ***P* < 0.005, *N* = 9–10).

were crossed onto *Apoe*^{-/-} animals, and atherosclerotic lesion size was assessed after WD. MAP4K4 KD animals displayed a significant 31% reduction in aortic root lesion area (256.1 versus 185.1 × 1,000 μm²; Fig. 3d,e) and a 46% reduction in *en face* prepared aortic lesion areas as assessed by haematoxylin and eosin staining compared with controls (15.7% versus 8.5%; Fig. 3f,g). These changes in aortic lesion size were in the absence of changes in glucose levels or plasma lipid content (Supplementary Table 1). Importantly, the atherosclerosis protection in these animals was observed even with only a partial loss of endothelial Map4k4 expression. Thus, using both conditional endothelial Map4k4 ablation and constitutive endothelial Map4k4 silencing approaches in mouse genetic models, we demonstrate that endothelial Map4k4 expression is required for full atherosclerotic lesion development and progression.

Less aortic macrophage content in mice lacking EC Map4k4.

We hypothesized that the protection from atherosclerosis observed in MAP4K4 ECKO and MAP4K4 KD animals was due to impaired leukocyte recruitment through the EC barrier and accumulation within the atherosclerotic plaque. Thus, aortas from control and MAP4K4 ECKO or MAP4K4 KD mice were isolated, and macrophage gene expression was estimated by qRT-PCR. Macrophage marker genes *F4/80* and *Cd68* were significantly reduced in both MAP4K4 ECKO and MAP4K4 KD mice compared with their respective controls (Figs 3h and 4a). Because endothelial-derived chemokines can also control leukocyte homing, we additionally assessed the expression of several chemokines that are known to play a role in atherosclerosis. Analysis by qRT-PCR revealed decreased expression of *Ccl3* and *Ccl4* in MAP4K4 KD mouse aortas compared with controls (Fig. 3i). The reduction in chemokine mRNA levels was more marked in MAP4K4 ECKO mouse aortas; in this model, *Ccl2*, *Ccl7* and *Cxcl9* expression was also reduced (Fig. 4b), which is

consistent with our observations that MAP4K4 ECKO mice display a near-complete ablation of endothelial Map4k4 protein levels, whereas MAP4K4 KD mice only display a partial reduction (Figs 2c,d and 3b,c).

To formally determine whether endothelial MAP4K4 promoted leukocyte recruitment, thioglycollate-elicited peritoneal exudate cells were extracted from green fluorescent protein (GFP)-expressing mice and injected intravenously into control or MAP4K4 KD animals, and GFP-positive cell content was quantified within the aortic arch to assess homing (Fig. 4c). MAP4K4 KD mice displayed a 67% reduction in GFP-positive cell content within atherosclerotic plaques (Fig. 4d). Macrophage homing to inflamed sites is controlled *in vivo* by the expression of leukocyte adhesion molecules Intercellular adhesion molecule (Icam)-1 and Vcam-1. Thus, we assessed expression of these molecules in the aortic arch sections after WD. Immunofluorescence of the aortic arches in control mice revealed significant levels of both Icam-1 and Vcam-1 protein that colocalized with the endothelial marker Cd31, whereas in M4K4 KD aortas, there was little Icam-1 and Vcam-1 staining that colocalized with Cd31 (Fig. 5), suggesting that the reduced macrophage accumulation in the plaques may be due to a reduction in macrophage homing. Thus, endothelial MAP4K4 plays an essential role in leukocyte homing to and accumulation within atherosclerotic plaques.

EC MAP4K4 regulates TNF-α-mediated inflammation *in vitro*.

The significant reduction in atherosclerosis that was observed in MAP4K4-depleted mice suggested that endothelial MAP4K4 was a potent regulator of vascular inflammation. Thus, we assessed whether MAP4K4 was required for TNF-α-mediated inflammation of the endothelium, including tight-junction permeability, which allows for plasma protein leakage into inflamed tissues²³ and inflammatory cell adhesion to activated endothelium. For these experiments, human umbilical vein ECs (HUVECs) were employed as a standard model for such analysis. Using

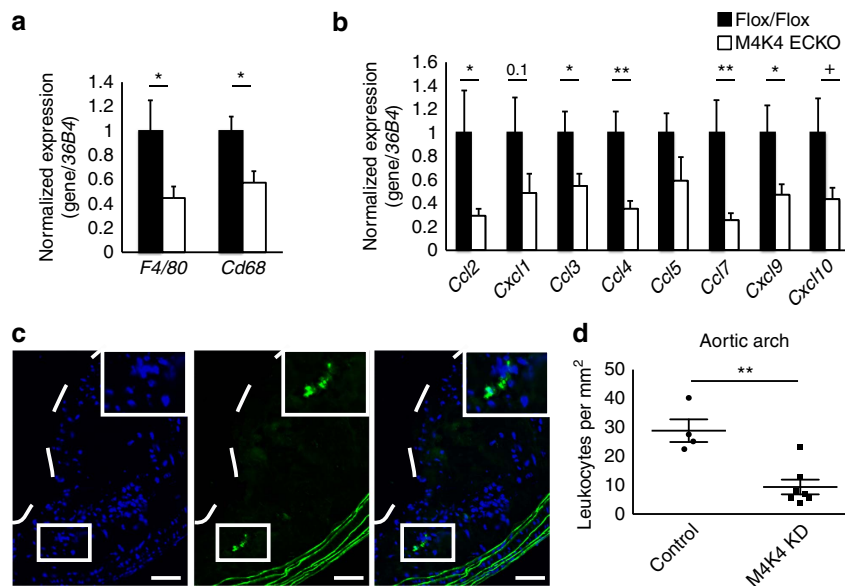


Figure 4 | Less macrophages in plaques from M4K4 ECKO and KD mice. (a,b) Messenger RNA was prepared from whole aortas, and qPCR was performed. (a) Macrophage markers *F4/80* and *Cd68*. (b) Chemokines *Ccl2*, *Cxcl1*, *Ccl3*, *Ccl4*, *Ccl5*, *Ccl7*, *Cxcl9* and *Cxcl10*. Data represent the mean ± s.e.m. as normalized to *36b4* (**P* < 0.05, ***P* < 0.005, *N* = 9–10). (c,d) Homing of GFP leukocytes into atherosclerotic lesions 48 h after intravenous injection into control or MAP4K4 KD mice that were fed WD for 16 weeks. (c) Fluorescence micrograph of atherosclerotic plaque demonstrating four GFP leukocytes within the aortic arch. The dashed line indicates the plaque border. Inset, magnification of three GFP leukocytes. Left, 4,6-diamidino-2-phenylindole; middle, GFP; right, merge. Scale bars, 100 μm. (d) Quantification of GFP leukocytes per square millimetre of plaque. Data represent the mean ± s.e.m. (***P* < 0.005, *N* = 4,7).

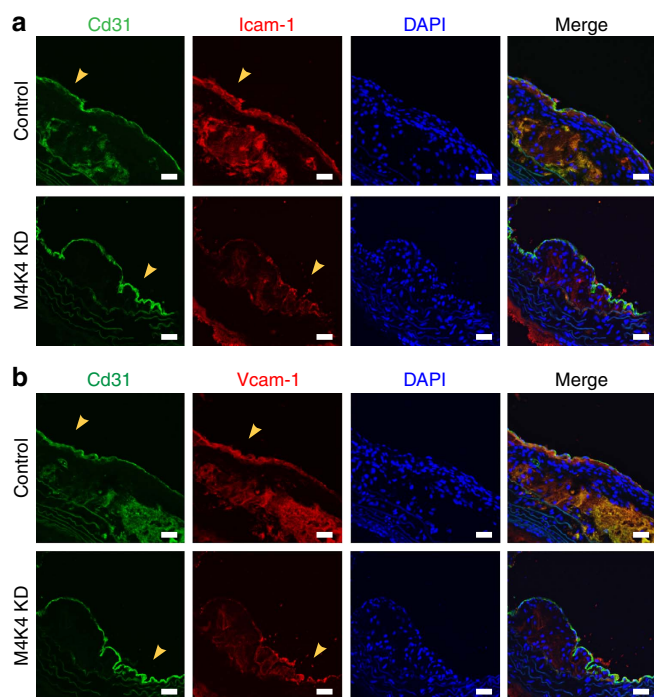


Figure 5 | Reduced EC Icam-1 and Vcam-1 in M4K4 KD plaques. (a,b) Control and M4K4 KD mice were fed WD for 16 weeks. Aortic arch sections were stained for Cd31 as an endothelial marker (green), Icam-1 (red, **(a)**), Vcam-1 (red, **(b)**) or DAPI. From left, Cd31, Icam-1/Vcam-1, DAPI and merge. Scale bars, 100 μ m. Arrowheads indicate Cd31/Icam-1 or Cd31/Vcam-1 colocalization. Images are representative of at least three control and three M4K4 KD animals. DAPI, 4,6-diamidino-2-phenylindole.

transwell chambers, it was observed that TNF- α induced a 65% increase in FITC-labelled dextran movement across a monolayer in scrambled short interfering RNA (siRNA)-transfected HUVECs, whereas permeability was 87% and 59% reduced in MAP4K4-silenced HUVECs, basally and after stimulation, respectively (Fig. 6a). MAP4K4 also promoted monocyte adhesion to an activated endothelial monolayer. Though TNF- α treatment increased monocyte adhesion to scrambled siRNA-transfected HUVECs by 65%, both basal and stimulated monocyte adhesion to the endothelium was reduced by 31 and 37%, respectively, after MAP4K4 silencing (Fig. 6b).

Because MAP4K4 promoted leukocyte adhesion to HUVECs, we assessed whether MAP4K4 was required for TNF- α -induced cell surface adhesion molecule upregulation. Upon MAP4K4 silencing with siRNA, ICAM-1, VCAM-1 and E-selectin mRNA and protein expression was blunted compared with scrambled siRNA-transfected cells at multiple time points (Fig. 6c–h; Supplementary Fig. 1a–d). MLECs from MAP4K4 KD mice also displayed attenuated TNF- α -induced leukocyte adhesion molecule expression compared with those from controls (Supplementary Fig. 1e–h). These data indicate that endothelial MAP4K4 plays a cell autonomous and conserved role among species to regulate TNF- α -induced leukocyte adhesion molecule expression. Similar experiments were conducted using other inflammatory stimuli in HUVECs. Although a similar trend to reduced E-selectin mRNA expression was observed in response to interleukin-1 β treatment after MAP4K4 silencing (Supplementary Fig. 1i–l), no changes were observed after lipopolysaccharide treatment (Supplementary Fig. 1m–p), suggesting some specificity to the actions of MAP4K4 to mediate vascular inflammation.

Endothelial MAP4K4 promotes NF κ B localization and activity.

EC leukocyte adhesion molecule expression is controlled by the MAPK and NF κ B signalling pathways^{15,24–27}. MAP4K4 was originally reported to act upstream of the JNK signalling cascade^{28,29}; however, no reductions in TNF- α -induced JNK, p38 MAPK or extracellular signal-regulated kinase (Erk) activation were noted upon MAP4K4 depletion (Supplementary Fig. 2a), consistent with recent reports demonstrating no requirement for MAP4K4 in JNK activation^{12,13,14}. Because of the strong link between endothelial NF κ B and atherosclerosis^{16,30,31}, we thus investigated whether MAP4K4 might promote NF κ B activation. It is well established that p65 (Rel A) is retained in the cytosol by inhibitor of κ B α (I κ B α), which is phosphorylated and subsequently degraded upon stimulation with cytokines, thus allowing p65 nuclear translocation and target gene expression³². However, neither TNF- α -mediated I κ B α phosphorylation nor its degradation were altered (Supplementary Fig. 2b–e) after MAP4K4 silencing. Furthermore, I κ B kinase and p65 phosphorylation was also unaltered (Supplementary Fig. 2b). However, in the basal state, total I κ B α protein levels were increased in MAP4K4-deficient HUVECs compared with control cells (Supplementary Fig. 2b,c).

The lack of changes due to MAP4K4 depletion in TNF- α -mediated I κ B kinase or I κ B α phosphorylation did not exclude the possibility that MAP4K4 could regulate nuclear p65 levels or activity. Thus, MAP4K4 or scrambled siRNA-transfected HUVECs were subjected to biochemical fractionation. In MAP4K4-depleted cells, less nuclear phospho-p65 and its heterodimeric partner p50 protein was observed after TNF- α stimulation compared with scrambled-transfected cells (Fig. 6i,j). These data suggested that MAP4K4 might regulate NF κ B nuclear retention or activity. Indeed, TNF- α -induced NF κ B transcriptional activity, as assessed by a luciferase reporter containing NF κ B-binding elements³³, was attenuated when MAP4K4 was silenced (Fig. 6k). Furthermore, using p65 chromatin immunoprecipitation in HUVECs, TNF- α -induced p65 binding to the VCAM-1, E-selectin and I κ B α promoters (Fig. 6l–n) was reduced in MAP4K4-silenced cells, suggesting that MAP4K4 may regulate NF κ B target gene expression.

Pharmacological MAP4K4 inhibition reduced atherosclerosis.

On the basis of the protection observed in development of atherosclerosis after MAP4K4 depletion in genetic mouse models (Figs 2 and 3), we attempted to verify these results and determine whether inhibiting the protein kinase activity of MAP4K4 would also protect against atherosclerosis development. A highly selective small-molecule inhibitor of MAP4K4, PF-06260933, was therefore employed, which is described in detail elsewhere³⁴. HUVECs or peritoneal macrophages were treated with vehicle or PF-06260933 *in vitro* to determine whether pharmacological inhibition of MAP4K4 altered MAPK signalling in response to TNF- α . No changes were noted in TNF- α -induced JNK, p38 MAPK or Erk phosphorylation in response to inhibitor treatment (Supplementary Fig. 3a–d). PF-06260933 treatment of human aortic ECs also robustly prevented TNF- α -mediated endothelial permeability *in vitro*, similar to MAP4K4 knockdown (Supplementary Fig. 3e).

PF-06260933 was administered to *ApoE*^{-/-} mice (10 mg kg⁻¹ b.i.d.) for 6 weeks concomitant with WD, and atherosclerosis lesion development was markedly reduced in the treated mice compared with those that were administered vehicle only (8.0% versus 5.5%; Fig. 7a–c). In this animal model, PF-06260933 treatment did not alter plasma lipid content, although reductions in glucose levels were observed (Supplementary Table 1), which is consistent with whole-body-inducible Map4k4 knockout

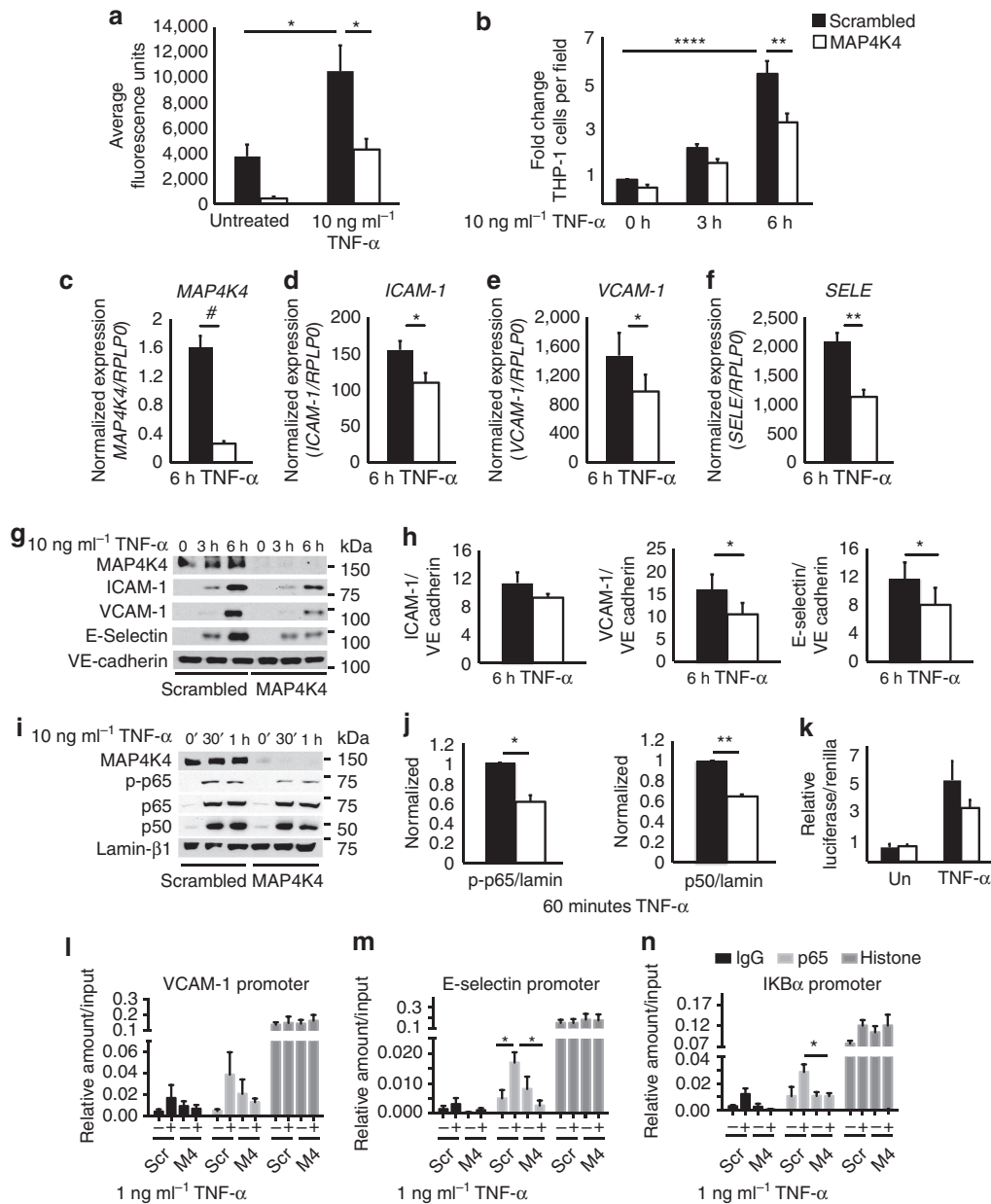


Figure 6 | Endothelial MAP4K4 promotes EC activation via NF-κB. HUVECs were treated with scrambled or MAP4K4 siRNA, and cells were stimulated with 1 or 10 ng ml⁻¹ TNF-α for the indicated times. **(a)** Cells were seeded onto transwell chambers. Confluent cells were treated overnight with 10 ng ml⁻¹ TNF-α or left untreated, and FITC-labelled dextran that migrated through the HUVEC monolayer was measured. The data represent the mean fluorescence intensity ± s.e.m. (analysis of variance (ANOVA) *P < 0.05, N = 4). **(b)** THP-1 monocytes were stained with calcein green and adhered to activated endothelium for 30 min. Fluorescence microscopy was performed to determine the number of adherent THP-1 monocytes per microscopic field (× 100). The data represent the mean ± s.e.m. as normalized to the unstimulated control time point (ANOVA **P < 0.01, ****P < 0.0001, N = 5). **(c-f)** Messenger RNA was extracted and quantitative RT-PCR was performed for **(c)** MAP4K4, **(d)** ICAM-1, **(e)** VCAM-1 and **(f)** SELE. The data represent the mean ± s.e.m. as normalized to RPLP0 (*P < 0.05, **P < 0.005, #P < 0.0001, N = 5-7). **(g)** Immunoblots were performed for ICAM-1, VCAM-1 and E-selectin. **(h)** Densitometric analyses from **g**. The data represent the means ± s.e.m. as normalized to VE-cadherin (*P < 0.05, N = 4-6). **(i)** Biochemical fractionations were performed, and nuclear fractions were immunoblotted for MAP4K4, p-p65, total p65, p50 and lamin-β1. **(j)** Densitometric analyses represent the mean ± s.e.m. for the 60-min time point as normalized to lamin-β1 (*P < 0.05, **P < 0.005, N = 3). **(k)** NFκB-luciferase and SV40-Renilla were transfected into HUVECs after treatment with scrambled or MAP4K4 siRNA. Cells were left unstimulated or stimulated with 10 ng ml⁻¹ TNF-α overnight before luciferase and Renilla measurement. The data represent the mean ± s.e.m. from four independent experiments. **(l-n)** HUVECs were transfected with MAP4K4 siRNA and stimulated or not with 1 ng ml⁻¹ TNF-α for 1 h. IgG, p65 and histone antibodies were used to immunoprecipitate chromatin and RT-PCR was used to amplify **(l)** E-selectin, **(m)** VCAM-1 and **(n)** IκBα promoters. The data represent the mean ± s.e.m. as normalized to input (*P < 0.05, N = 3-4).

animals³⁵. Because atherosclerosis is often treated as an advanced disease, a regression model was also performed with PF-06260933 treatment of *Ldlr*^{-/-} mice that were fed a custom diet containing a high cholesterol content. PF-06260933

administration ameliorated further plaque development and/or promoted plaque regression in this animal model (46.0% versus 25.5%; Fig. 7d-f), and a reduction in plasma glucose as well as lipid content was also observed (Supplementary Table 1).

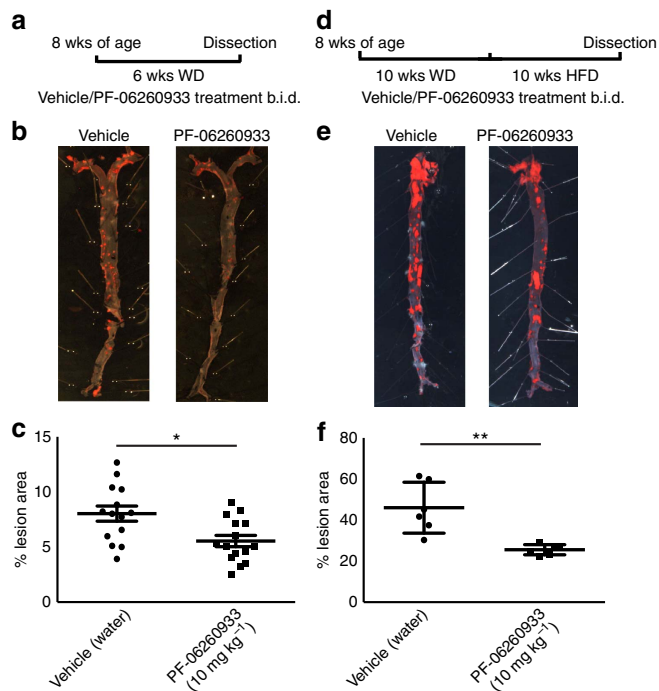


Figure 7 | Pharmacological MAP4K4 inhibition ameliorates atherosclerosis. (a–c) *ApoE*^{−/−} mice were administered PF-06260933 or vehicle twice daily for 6 weeks. (a) Dosing regimen (b) Oil red-O-stained *en face* aortic preparations from vehicle and PF-06260933-treated animals. (c) Quantification of the Oil Red-O-stained area. Data represent the mean ± s.e.m. (**P* < 0.05, *N* = 14–15). (d–f) *Ldlr*^{−/−} mice were fed HFD for 10 weeks followed by PF-06260933 or vehicle administration daily for 10 additional weeks. (d) Dosing regimen. (e) Oil Red-O-stained *en face* aortic preparations from vehicle and PF-06260933-treated animals. (f) Quantification of the Oil Red-O-stained area. Data represent the mean ± s.e.m. (***P* < 0.005, *N* = 6).

Importantly, PF-06260933 administration did not significantly affect body weight in either the *ApoE*^{−/−} or *Ldlr*^{−/−} mouse models (PF-06260933 serum concentrations were 2275.0 ± 270.1 ng ml^{−1}; Supplementary Table 1). These data suggest that PF-06260933 ameliorated atherosclerotic plaque development in animals and may have additional beneficial functions that may be related to effects in non-EC types to reduce plasma glucose levels and lipid content. Thus, both genetic and pharmacological targeting approaches indicate that endothelial MAP4K4, by controlling immune cell recruitment, vascular permeability or both, is required for atherosclerotic plaque development *in vivo*.

Discussion

Atherosclerosis is an inflammatory disease that is initiated by lipid-mediated vascular inflammation of the vessel wall, which promotes continual monocyte recruitment in a leukocyte adhesion molecule-dependent manner^{4,8,36}. Strategies for developing therapeutics for this disease include the search for key cellular enzymes in ECs that promote leukocyte attachment and permeability and may serve as drug targets. We hypothesized that the protein kinase MAP4K4 may be a candidate based on previous work suggesting it promotes proinflammatory functions, and the data presented here support this hypothesis. Constitutive silencing of endothelial MAP4K4 or inducible endothelial-specific MAP4K4 deletion ameliorated atherosclerosis development in mice as measured by histology of the aortic root and Oil Red-O

staining of the aorta (Figs 2 and 3). Furthermore, reduced macrophage marker and chemokine mRNA expression was observed in aortas from *ApoE*^{−/−} animals when endothelial MAP4K4 expression was attenuated, and leukocyte homing to atherosclerotic plaques within the aortic arch was also markedly inhibited (Fig. 4). Finally, treatment of *ApoE*^{−/−} or *Ldlr*^{−/−} mice with a small-molecule MAP4K4 protein kinase inhibitor significantly reduced atherosclerotic plaque progression and promoted plaque regression (Fig. 7). Together, these data strongly support the idea that MAP4K4 may be a novel therapeutic target for the treatment of cardiovascular disease.

To understand the mechanisms by which MAP4K4 promoted monocyte accumulation in atherosclerotic plaques, we utilized human ECs as a model system. With both HUVECs and human aortic ECs, the results showed that MAP4K4 silencing and pharmacological inhibition blunted basal and TNF- α -mediated endothelial permeability (Fig. 6; Supplementary Fig. 3). Furthermore, siRNA-mediated MAP4K4 depletion in HUVECs attenuated TNF- α -induced leukocyte adhesion, which was accompanied by a reduction in TNF- α -induced adhesion molecule expression. Finally, less NF κ B p65 binding to adhesion molecule promoters was observed in TNF- α -treated MAP4K4-depleted cells, indicating that endothelial MAP4K4 promotes NF κ B-mediated gene expression (Fig. 6).

We previously demonstrated that macrophage MAP4K4 was not upstream of the classical activation system for the NF κ B signalling pathway¹³; however, in the present experiments we noted that MAP4K4 silencing reduced TNF- α -induced p65 nuclear localization and transcriptional activation without altering I κ B α degradation (Fig. 6i,j; Supplementary Fig. 2). These data suggest an alternative mechanism of NF κ B modulation by MAP4K4, which was not addressed in our studies on macrophages. The reduced transcriptional activation and promoter binding in response to MAP4K4 depletion observed in these present studies may be due to altered post-translational modifications of p65 or p50, such as acetylation that can control p65 activity and nuclear retention in a manner downstream of I κ B α degradation³⁷. Future studies will assess this possibility.

The previous demonstration that MAP4K4 is required for inflammatory cytokine release in a model of lipopolysaccharide-induced lethality¹³ has been confirmed using PF-06260933 (ref. 34). These results suggest that macrophage MAP4K4 can modulate cytokine release, and macrophage-derived cytokines can contribute to atherosclerosis progression in mice and humans¹. Thus, loss of MAP4K4 expression or activity in macrophages using genetic deletion strategies or via PF-06260933 treatment, respectively, could also ameliorate atherosclerosis. Genetic tissue-specific deletions of MAP4K4 in macrophages as well as smooth muscle on the *ApoE*^{−/−} background will be performed in the future to assess the contribution of these tissues to the overall atherosclerosis protection observed after PF-06260933 treatment.

It is important to emphasize that neither endothelial MAP4K4 silencing nor pharmacological inhibition of MAP4K4 in ECs or peritoneal macrophages altered TNF- α -mediated JNK, p38 MAPK or Erk activation (Supplementary Figs 2 and 3). These data are consistent with animal models that illustrate no requirement for JNK1 in atherosclerosis³⁸. Although no endothelial-specific JNK2 knockout mice have been reported, the atherosclerosis protection mediated by JNK2 deletion is presumably because of enhanced macrophage lipid flux^{38,39}. Furthermore, endothelial NF κ B is required for leukocyte adhesion molecule expression, atherosclerosis and macrophage homing to atherosclerotic plaques^{16,30}, and pharmacological targeting of endothelial NF κ B ameliorated leukocyte-

endothelial interactions as well as vascular permeability³¹. In addition to the inflammatory response, endothelial NF κ B also regulates systemic insulin sensitivity and even ageing^{31,40}.

Notably, PF-06260933 treatment of *ApoE*^{-/-} and *Ldlr*^{-/-} animals reduced plasma glucose levels, indicating that systemic MAP4K4 inhibition with this compound may also enhance peripheral insulin sensitivity and have anti-diabetic actions. In support of this hypothesis, a recent publication from our laboratory describes whole-body-inducible and myf5-specific Map4k4 knockout mice, which display reduced plasma glucose levels and enhanced insulin sensitivity after HFD compared with control littermates³⁵. Though there were no significant differences in plasma lipid content in either MAP4K4 KD mice or PF-06260933-treated *ApoE*^{-/-} mice, there were significant reductions in PF-06260933-treated *Ldlr*^{-/-} animals, which could contribute to the plaque size changes observed in this model (Supplementary Table 1). Endothelial Map4k4 KD mice did not display altered plasma lipid levels (Supplementary Table 1); therefore, the reduction in plasma lipids that was observed in *Ldlr*^{-/-} mice after PF-06260933 treatment could contribute to the reduced atherosclerosis in a manner that is independent of the endothelium. However, the *Ldlr*^{-/-} mouse study was performed using a diet that was extremely high in cholesterol content (1.25%) and represents an extreme dietary stress, and *ApoE*^{-/-} studies were performed using a diet with much lower cholesterol content (0.2%).

Although we have focused here on the role of endothelial MAP4K4 using genetic models, we cannot rule out the possibility that systemic MAP4K4 inhibition with PF-06260933 may also ameliorate atherosclerosis via its effects on additional cell types such as macrophages, smooth muscle cells or even the liver. Therefore, while MAP4K4 likely has actions in multiple cell types to promote atherosclerosis in mice, protection from and treatment of atherosclerosis by PF-06260933 is consistent with endothelial MAP4K4 as one of multiple targets for the action of PF-06260933 to mediate these beneficial effects.

In summary, our data generated from the methods of gene silencing, gene ablation and pharmacological inhibition identify endothelial MAP4K4 as a novel regulator of vascular inflammation and endothelial activation that is required for atherosclerotic plaque development in mice. These data also implicate endothelial MAP4K4 in acute endothelial functions that are impaired by inflammation such as endothelial barrier function or relaxation. Furthermore, the results we present with specific MAP4K4 kinase inhibitor PF-06260933 reveals that MAP4K4 is a novel and important anti-atherosclerosis therapeutic target.

Methods

Mouse models. The University of Massachusetts Medical School Institutional Animal Care and Use Committee or the Pfizer Institutional Animal Care and Use Committees approved all of the animal procedures. MAP4K4-pSico mice⁴¹ were first crossed with VE-cadherin Cre transgenic mice (B6.Cg-Tg(Cdh5-cre)7Mlia/J, Jackson Laboratories), and these animals were then crossed onto the *ApoE*^{-/-} background (B6.129P2-*ApoE*^{tm1Unc/J}, Jackson Laboratories). Map4k4 flox/flox animals were crossed with a tamoxifen-inducible endothelial-specific cre mouse line (Cdh5(PAC)-CreERT2) that was obtained from Dr Ralf Adams²², and these animals were crossed onto the *ApoE*^{-/-} background as above.

Atherosclerosis models. At 6–8 weeks of age, male flox/flox and flox/flox/cre + littermates were injected with 1 mg tamoxifen per day in corn oil (Sigma) for 5 days. At 5–6 weeks of age (KD mice) or 2 weeks after tamoxifen injection (flox mice), the mice were fed chow or WD (0.2% cholesterol, TD 88137, Harlan Laboratories) for 16 weeks. Compound PF-06260933 Sigma Aldrich (catalog # PZ0272) (10 mg kg⁻¹, dissolved in dH₂O) was orally administered to 8–10-week-old male *ApoE*^{-/-} mice twice daily for 6 weeks. *Ldlr*^{-/-} male mice (B6.129S7-*Ldlr*^{tm1Her/J}, Jackson Laboratories, 8–10 weeks old) were placed on HFD (1.25% cholesterol, TD96121, Harlan Laboratories) for 10 weeks before drug administration. Compound PF-06260933 was administered to male 8–10-week-old *Ldlr*^{-/-} mice as above for 10 weeks. Oral administration of water was used as vehicle

control in all studies. Mice were euthanized by CO₂ inhalation followed by bilateral pneumothorax. No statistical methods were used to predict sample size, no randomization was performed and the investigations were not blinded during the knockout animal analyses, but were blinded during the drug treatment analyses.

Generation of mice. The original pSico-MAP4K4 lentiviral vector from the study by Ventura *et al.*⁴¹ was modified by cleavage to remove viral elements (5' SIN-LTR, HIV-RRE, flap and 3' SIN-LTR), which left only the U6 promoter, first loxP site, cytomegalovirus (CMV)-enhanced GFP (EGFP) cassette, second loxP site, MAP4K4 shRNA-coding region, and Woodchuck hepatitis virus post-transcriptional regulatory element. To create a conditional U6 promoter, a CMV-enhanced stop cassette was inserted between two loxP sites. A functional U6 promoter is generated after cre excision, which drives expression of a hairpin targeting MAP4K4 (5'-GCTGTCTGTGAAGAATTA-3'). Because the polyA tail that is necessary for EGFP expression is in the 3' SIN-LTR, we were able to preclude any possibility of EGFP expression in primary tissues and thus any side effects of EGFP expression. The U6 promoter still produced MAP4K4 siRNA transcripts, because the 6-nucleotide polyT sequence at the end of the MAP4K4 shRNA antisense sequence is recognized as a termination signal by RNA pol III promoters including U6. The construct was injected into eggs at the one-cell stage, and two-cell stage eggs were implanted into pseudo-pregnant C57Bl/6J females by the UMSS transgenic animal facility. The animals were then backcrossed onto C57Bl/6J mice for seven generations. Genomic DNA was extracted from the obtained mice and subjected to PCR for genotyping (shRNA primer 5'-CCCG TATGGCTTCATTTCTCC-3', 5'-AAGGAAGGTCGCTGGATTGAG-3'). Cre and ApoE genotyping was performed according to the method of Jackson Laboratories. MAP4K4 flox/flox animals were obtained from the Texas A&M Institute for genomic medicine. Animals were backcrossed with BL6/J mice for seven generations before crossing them with the Cdh5(PAC)-CreERT2 mouse line. For Map4k4 expression studies, male MAP4K4 flox/flox animals (without cre) were fed standard chow or HFD (60%; RD12942i Research diets) starting 2 weeks after tamoxifen injections, and tissues were analysed after 16 weeks on the respective diet. Mice were fasted overnight before plasma lipid and glucose analysis.

Human samples. Samples of atherosclerotic plaque were obtained from four patients undergoing elective carotid endarterectomy for significant carotid stenosis. The study was approved by the UMSS Medical School Institutional Review Board (#H00001329), and written informed consent was obtained from each patient before the study. The entire plaque was removed at the time of surgery and immediately frozen in liquid nitrogen. Patient clinical information is listed in Supplementary Table 3. Normal human arterial RNA samples were purchased from Agilent (540199), Clontech (636546), and Biochain (R1234013-10). One additional human atherosclerotic plaque RNA sample was purchased from Origene (CR562657).

Cell culture and transfection. HUVECs (purchased from Clonetics, mycoplasma negative, C2519AS) were maintained in EGM2 media (Lonza) at 37 °C and 5% CO₂. Scrambled (5'-GACCAACUCUGGCUUGUUA-3') or MAP4K4 (5'-CAGU CGCGUUGCGACUGG-3') siRNA (25 nM, Dharmacon) was reverse transfected with RNAiMax (Life Technologies) for 48 h before experiments.

RNA isolation and qRT-PCR. Total RNA was isolated following the manufacturer's protocol (TriPure, Roche). Precipitated RNA was treated with DNase (DNA-free, Life Technologies) before reverse transcription (iScript Reverse transcriptase, Bio-Rad). SYBR green quantitative PCR (iQ SYBR green supermix, Bio-Rad) was performed on the Bio-Rad CFX97. Primer sequences are listed in Supplementary Table 2.

Western blotting. Cells were lysed in RIPA lysis buffer (1% NP-40, 50 mM Tris pH 7.4, 150 mM NaCl, 0.1% SDS, 1% sodium deoxycholate and 50 mM EDTA) with 1 × HALT protease and phosphatase inhibitors (Thermo Scientific). Lysates were run on SDS-polyacrylamide gel electrophoresis gels and transferred to nitrocellulose membranes. Membranes were immunoblotted with anti-ICAM-1 BBIG-I1 (1:1,000), VCAM-1 BBIG-V1 (1:1,000), E-selectin BBIG-E4 (1:1,000) (R&D systems), MAP4K4 A301-503A (1:2,000) (Bethyl), VE-cadherin 2500 (1:2,000), p-JNK1/2 4668 (1:1,000), total JNK1/2 9258 (1:1,000), p-p38 MAPK 4631 (1:1,000), p-Ik β 9246 (1:1,000), Ik β 4814 (1:1,000), p-p65 3039 (1:1,000), p65 8242 (1:1,000), HGK 3485 (1:1,000), p-Erk 4370 (1:1,000) (Cell Signaling Technology), total p38 MAPK sc-535 (1:1,000), total Erk1 sc-93 (1:4,000) (Santa Cruz) or lamin- β 1 ab16048 (1:1,000) (Abcam) antibodies. Uncropped western blot images are provided as Supplementary Figs 4–6.

Aortic staining. Mouse aortas were perfused with PBS followed by 10% formalin or 4% paraformaldehyde. Aortic root sections were embedded in OCT for frozen sectioning. Photos of aortic root sections were taken with an Axiovert 35 Zeiss microscope (Zeiss, Germany) equipped with an AxioCam CCI camera at ×25 magnification. *En face* stained aortas and light microscopy was obtained with a Nikon Stereo microscope equipped with a Spot Insight camera (Spot Imaging) at ×5 or

× 10 magnification. Aortic root sections and *en face* preparations were stained with Oil Red-O in 60% isopropanol or 80% methanol. Aortic roots were additionally stained with haematoxylin and eosin or trichrome by the UMass morphology core, with rat anti-mouse CD68 (1:200) (AbD Serotec, clone FA-11) and Cy3-smooth muscle actin (Sigma S6198) (1:200), or with anti-ICAM-1 BBIG-II (1:200) or VCAM-1 BBIG-V1 (1:200) (R&D systems) and rat anti-mouse CD31 (1:400) (BD) and mounted in Prolong Gold with DAPI (Life Technologies). Images were quantified using ImageJ or Image Pro Plus Analysis Software (Media Cybernetics).

Leukocyte homing. Peritoneal exudate cells were elicited by an intraperitoneal injection of 4% thioglycollate into 8–10-week-old male C57BL/6-Tg(UBC-GFP)30Scha/J mice (Jackson Laboratories). After 2 days, 3 million cells were injected intravenously into control or MAP4K4 KD mice that had been fed WD for 16 weeks. After 2 days, aortic arches were embedded in OCT. Total fluorescent cells were counted in 10 × 8- μ m sections over a 0.5-mm area, and the cell number was normalized to plaque area.

Plasma lipid and glucose analysis. Mice were fasted overnight and heparin or EDTA anticoagulated plasma was collected via cardiac puncture. Total cholesterol (Pointe Scientific), total triglyceride and high-density lipoprotein and low-density lipoprotein cholesterol (Sigma) levels were measured using colorimetric assays. Blood glucose levels were measured from whole blood using the Ascensia Breeze glucose analyzer (Bayer). Pfizer lipid studies were analysed with a Clinical Analyzer (C311 Roche/Hitachi).

THP-1 adhesion. HUVECs were transfected with scrambled or MAP4K4 siRNA as above. THP-1 monocytes were cultured in RPMI media and fluorescently labelled with calcein-AM (BD) according to the package insert 30 min before the adhesion assay. HUVECs were stimulated with 10 ng ml⁻¹ TNF- α (Calbiochem) for 3–6 h. In total, 1 × 10⁶ THP-1 cells were incubated with the activated HUVECs for 30 min at 37 °C. Non-adherent THP-1 cells were washed away, the cells were fixed and the remaining cells were imaged with fluorescence microscopy at 488 nm. At least five random fields were quantified per condition as the average number of adherent cells per field.

Endothelial permeability. The *In Vitro* Vascular Permeability Assay Kit (Millipore) was used according to the manufacturer's instructions. After the cells reached confluence, they were treated overnight with 10 or 100 ng ml⁻¹ TNF- α or left untreated.

Primary EC isolation. Lungs were excised, minced and digested in 0.1% collagenase (Sigma) in RPMI (Life Technologies) for 1 h. Digested cells were filtered, spun and plated in pre-isolation media consisting of 20% heat-inactivated FBS, 40% F-12 HAM media, 40% GlutaMAX media, 2 × L-glutamine, 1 × penicillin/streptomycin (Life Technologies), 0.1 mg ml⁻¹ heparin (Sigma), 1 × EC growth supplement (BD). When confluent, cells were magnetically selected with anti-rat dynal beads (Life Technologies) that had been conjugated to anti-CD31 (BD 553369; 10 μ g) and anti-CD102 antibodies (BD 553325; 10 μ g). Selected cells were grown in EGM2-MV, 15% FBS and 2 × L-glutamine until confluent. Unselected cells were kept as the non-EC fraction and grown until confluent.

Biochemical fractionation. The NE-PER cellular nuclear fractionation kit (Thermo Scientific) was used for nuclear extract preparation according to manufacturer's instructions.

Luciferase assay. The NF κ B luciferase reporter plasmid was a kind gift from the Sankar Ghosh lab. Luciferase reporter plasmids or control plasmids were transfected into HUVECs with the JET-PEI HUVEC transfection system (Polyplus). After 24 h, cells were treated with 10 ng ml⁻¹ TNF α or left untreated for an additional 24 h. Luciferase and Renilla were measured using the dual-luciferase reporter assay system (Promega) according to the manufacturer's instructions.

Chromatin immunoprecipitation. HUVECs were transfected as described above and either left unstimulated or stimulated with 1 ng ml⁻¹ TNF α for 1 h. The Simplechip enzymatic chromatin IP kit (Cell Signaling Technology) was used according to manufacturer's instructions. p65 antibodies (Santa Cruz sc-372; 5 μ g) or IgG (Cell Signaling 2729; 5 μ g) were used for p65 immunoprecipitations. VCAM-1 and E-selectin (SELE) primer sequences are listed in Supplementary Table 2. IKB α primers were purchased from Cell Signaling Technology.

Kinase assay. Aortas were lysed in 1% NP-40, 50 mM Tris pH 7.4, 150 mM NaCl, 50 mM EDTA with 1 × HALT protease and phosphatase inhibitors (Thermo Scientific) and immunoprecipitated with Bethyl MAP4K4 antibodies (503 A; 1 μ g) or normal rabbit IgG (Cell Signaling 2729; 1 μ g). Myelin basic protein (MBP) (1 μ g) and 10 μ Ci of [γ -³²P]ATP were added to the immunoprecipitates and incubated for 30 min at 30 °C in kinase buffer (20 mM HEPES, 10 nM MgCl₂, 1 mM dithiothreitol (DTT) and protease and phosphatase inhibitor cocktail). Samples were

separated by 12% SDS-polyacrylamide gel electrophoresis and visualized by autoradiography.

Statistical analysis. A two-tailed Student's *t*-test was used to compare two groups in Microsoft Excel. Where indicated, experiments comparing multiple groups were analysed with one-way analysis of variance and Fisher's exact test or Bonferroni's post-test in Graph Pad Prism 6.0. *P* < 0.05 was considered to be statistically significant. Variance was estimated using the s.e.m.

References

- Hansson, G. K. & Hermansson, A. The immune system in atherosclerosis. *Nat. Immunol.* **12**, 204–212 (2011).
- Libby, P. Inflammation in atherosclerosis. *Arterioscler. Thromb. Vasc. Biol.* **32**, 2045–2051 (2012).
- Tabas, I., Garcia-Cardena, G. & Owens, G. K. Recent insights into the cellular biology of atherosclerosis. *J. Cell Biol.* **209**, 13–22 (2015).
- Cybulsky, M. I. *et al.* A major role for VCAM-1, but not ICAM-1, in early atherosclerosis. *J. Clin. Invest.* **107**, 1255–1262 (2001).
- Collins, R. G. *et al.* P-Selectin or intercellular adhesion molecule (ICAM)-1 deficiency substantially protects against atherosclerosis in apolipoprotein E-deficient mice. *J. Exp. Med.* **191**, 189–194 (2000).
- Johnson, R. C. *et al.* Absence of P-selectin delays fatty streak formation in mice. *J. Clin. Invest.* **99**, 1037–1043 (1997).
- Dong, Z. M. *et al.* The combined role of P- and E-selectins in atherosclerosis. *J. Clin. Invest.* **102**, 145–152 (1998).
- Bourdillon, M. C. *et al.* ICAM-1 deficiency reduces atherosclerotic lesions in double-knockout mice (ApoE(-)/ICAM-1(-)) fed a fat or a chow diet. *Arterioscler. Thromb. Vasc. Biol.* **20**, 2630–2635 (2000).
- Liu, H., Su, Y. C., Becker, E., Treisman, J. & Skolnik, E. Y. A Drosophila TNF-receptor-associated factor (TRAF) binds the ste20 kinase misshaper and activates Jun kinase. *Curr. Biol.* **9**, 101–104 (1999).
- Collins, C. S. *et al.* A small interfering RNA screen for modulators of tumor cell motility identifies MAP4K4 as a promigratory kinase. *Proc. Natl Acad. Sci. USA* **103**, 3775–3780 (2006).
- Su, Y. C., Han, J., Xu, S., Cobb, M. & Skolnik, E. Y. NIK is a new Ste20-related kinase that binds NCK and MEK1 and activates the SAPK/JNK cascade via a conserved regulatory domain. *EMBO J.* **16**, 1279–1290 (1997).
- Danai, L. V. *et al.* Map4k4 suppresses Srebp-1 and adipocyte lipogenesis independent of JNK signaling. *J. Lipid Res.* **54**, 2697–2707 (2013).
- Aouadi, M. *et al.* Orally delivered siRNA targeting macrophage Map4k4 suppresses systemic inflammation. *Nature* **458**, 1180–1184 (2009).
- Wang, M. *et al.* Identification of Map4k4 as a novel suppressor of skeletal muscle differentiation. *Mol. Cell Biol.* **33**, 678–687 (2013).
- Pober, J. S. Endothelial activation: intracellular signaling pathways. *Arthritis Res.* **4 Suppl 3**, S109–S116 (2002).
- Gareus, R. *et al.* Endothelial cell-specific NF- κ B inhibition protects mice from atherosclerosis. *Cell Metab.* **8**, 372–383 (2008).
- Bouzakri, K., Ribaux, P. & Halban, P. A. Silencing mitogen-activated protein kinase 4 (MAP4K4) protects beta cells from tumor necrosis factor- α -induced decrease of IRS-2 and inhibition of glucose-stimulated insulin secretion. *J. Biol. Chem.* **284**, 27892–27898 (2009).
- Bouzakri, K. & Zierath, J. R. MAP4K4 gene silencing in human skeletal muscle prevents tumor necrosis factor- α -induced insulin resistance. *J. Biol. Chem.* **282**, 7783–7789 (2007).
- Pannekoek, W. J., Linnemann, J. R., Brouwer, P. M., Bos, J. L. & Rehmman, H. Rap1 and Rap2 antagonistically control endothelial barrier resistance. *PLoS ONE* **8**, e57903 (2013).
- Ali, Z. A. *et al.* Oxido-reductive regulation of vascular remodeling by receptor tyrosine kinase ROS1. *J. Clin. Invest.* **124**, 5159–5174 (2014).
- Xue, Y. *et al.* Mesodermal patterning defect in mice lacking the Ste20 NCK interacting kinase (NIK). *Development* **128**, 1559–1572 (2001).
- Wang, Y. *et al.* Ephrin-B2 controls VEGF-induced angiogenesis and lymphangiogenesis. *Nature* **465**, 483–486 (2010).
- Brett, J. *et al.* Tumor necrosis factor/cachectin increases permeability of endothelial cell monolayers by a mechanism involving regulatory G proteins. *J. Exp. Med.* **169**, 1977–1991 (1989).
- Zhou, Z., Connell, M. C. & MacEwan, D. J. TNFR1-induced NF- κ B, but not ERK, p38MAPK or JNK activation, mediates TNF-induced ICAM-1 and VCAM-1 expression on endothelial cells. *Cell Signal.* **19**, 1238–1248 (2007).
- Pober, J. S. & Sessa, W. C. Evolving functions of endothelial cells in inflammation. *Nat. Rev. Immunol.* **7**, 803–815 (2007).
- Read, M. A. *et al.* Tumor necrosis factor alpha-induced E-selectin expression is activated by the nuclear factor- κ B and c-JUN N-terminal kinase/p38 mitogen-activated protein kinase pathways. *J. Biol. Chem.* **272**, 2753–2761 (1997).
- Ahmad, M., Theofanidis, P. & Medford, R. M. Role of activating protein-1 in the regulation of the vascular cell adhesion molecule-1 gene expression by tumor necrosis factor- α . *J. Biol. Chem.* **273**, 4616–4621 (1998).

28. Yao, Z. *et al.* A novel human STE20-related protein kinase, HGK, that specifically activates the c-Jun N-terminal kinase signaling pathway. *J. Biol. Chem.* **274**, 2118–2125 (1999).
29. Machida, N. *et al.* Mitogen-activated protein kinase kinase kinase 4 as a putative effector of Rap2 to activate the c-Jun N-terminal kinase. *J. Biol. Chem.* **279**, 15711–15714 (2004).
30. Hajra, L. *et al.* The NF-kappa B signal transduction pathway in aortic endothelial cells is primed for activation in regions predisposed to atherosclerotic lesion formation. *Proc. Natl Acad. Sci. USA* **97**, 9052–9057 (2000).
31. Sehnert, B. *et al.* NF-kappaB inhibitor targeted to activated endothelium demonstrates a critical role of endothelial NF-kappaB in immune-mediated diseases. *Proc. Natl Acad. Sci. USA* **110**, 16556–16561 (2013).
32. Baker, R. G., Hayden, M. S. & Ghosh, S. NF-kappaB, inflammation, and metabolic disease. *Cell Metab.* **13**, 11–22 (2011).
33. Kopp, E. & Ghosh, S. Inhibition of NF-kappa B by sodium salicylate and aspirin. *Science* **265**, 956–959 (1994).
34. Ammirati, M. *et al.* Discovery of an *in vivo* tool to establish proof-of-concept for MAP4K4-based antidiabetic treatment. *ACS Med. Chem. Lett.* doi: 10.1021/acsmchemlett.5b00215 (2015).
35. Danai, L. V. *et al.* Inducible deletion of protein kinase Map4k4 in obese mice improves insulin sensitivity in liver and adipose tissues. *Mol. Cell. Biol.* **35**, 2356–2365 (2015).
36. Swirski, F. K. *et al.* Monocyte accumulation in mouse atherogenesis is progressive and proportional to extent of disease. *Proc. Natl Acad. Sci. USA* **103**, 10340–10345 (2006).
37. Chen, L. F. *et al.* NF-kappaB RelA phosphorylation regulates RelA acetylation. *Mol. Cell. Biol.* **25**, 7966–7975 (2005).
38. Ricci, R. *et al.* Requirement of JNK2 for scavenger receptor A-mediated foam cell formation in atherogenesis. *Science* **306**, 1558–1561 (2004).
39. Sumara, G., Belwal, M. & Ricci, R. "Jnking" atherosclerosis. *Cell. Mol. Life Sci.* **62**, 2487–2494 (2005).
40. Hasegawa, Y. *et al.* Blockade of the nuclear factor-kappaB pathway in the endothelium prevents insulin resistance and prolongs life spans. *Circulation* **125**, 1122–1133 (2012).
41. Ventura, A. *et al.* Cre-lox-regulated conditional RNA interference from transgenes. *Proc. Natl Acad. Sci. USA* **101**, 10380–10385 (2004).

Acknowledgements

We thank Joseph Virbasius and Silvia Corvera for helpful discussions and critical reading of the manuscript. We thank the UMASS Morphology core for assistance. This work was supported by NIH grant DK030898 and a grant from the International Research Alliance at Novo Nordisk Foundation Center for Metabolic Research to M.P.Czech, American Heart Association postdoctoral fellowship AHA 11POST704009 to R.J.R.F., American Heart Association Fellow to Faculty award 12FTF11260010 to T.P.F. and NIH grant DK089185 to M.P.Cooper.

Author contributions

R.J.R.F., A.S., L.B. and M.P.Czech designed research. R.J.R.F., A.M., A.S., W.Z., C.C., L.V.D., J.C.Y., T.P.F., P.V. and L.G.M. performed research. M.A. and N.H. designed a mouse model that was used in the research. T.P.F. and M.P.Cooper obtained human samples used in the research. SB identified the MAP4K4 inhibitor molecule. R.J.R.F. and M.P.Czech wrote the manuscript.

Additional information

Supplementary Information accompanies this paper at <http://www.nature.com/naturecommunications>

Competing financial interests: The authors declare no competing financial interests.

Reprints and permission information is available online at <http://npg.nature.com/reprintsandpermissions/>

How to cite this article: Roth Flach, R.J. *et al.* Endothelial protein kinase MAP4K4 promotes vascular inflammation and atherosclerosis. *Nat. Commun.* 6:8995 doi: 10.1038/ncomms9995 (2015).



This work is licensed under a Creative Commons Attribution 4.0 International License. The images or other third party material in this article are included in the article's Creative Commons license, unless indicated otherwise in the credit line; if the material is not included under the Creative Commons license, users will need to obtain permission from the license holder to reproduce the material. To view a copy of this license, visit <http://creativecommons.org/licenses/by/4.0/>