

RESEARCH

Open Access



Resistin-like molecule β acts as a mitogenic factor in hypoxic pulmonary hypertension via the Ca^{2+} -dependent PI3K/Akt/mTOR and PKC/MAPK signaling pathways

Heshen Tian^{1,3†}, Lei Liu^{1†}, Ying Wu^{1†}, Ruiwen Wang^{1†}, Yongliang Jiang¹, Ruicheng Hu¹, Liming Zhu¹, Linwei Li¹, Yanyan Fang¹, Chulan Yang¹, Lianzhi Ji¹, Guoyu Liu¹ and Aiguo Dai^{1,2*}

Abstract

Background: Pulmonary arterial smooth muscle cell (PASMC) proliferation plays a crucial role in hypoxia-induced pulmonary hypertension (HPH). Previous studies have found that resistin-like molecule β (RELM- β) is upregulated de novo in response to hypoxia in cultured human PASMCs (hPASMCs). RELM- β has been reported to promote hPASMC proliferation and is involved in pulmonary vascular remodeling in patients with PAH. However, the expression pattern, effects, and mechanisms of action of RELM- β in HPH remain unclear.

Methods: We assessed the expression pattern, mitogenetic effect, and mechanism of action of RELM- β in a rat HPH model and in hPASMCs.

Results: Overexpression of RELM- β caused hemodynamic changes in a rat model of HPH similar to those induced by chronic hypoxia, including increased mean right ventricular systolic pressure (mRVSP), right ventricular hypertrophy index (RVHI) and thickening of small pulmonary arterioles. Knockdown of RELM- β partially blocked the increases in mRVSP, RVHI, and vascular remodeling induced by hypoxia. The phosphorylation levels of the PI3K, Akt, mTOR, PKC, and MAPK proteins were significantly up- or downregulated by RELM- β gene overexpression or silencing, respectively. Recombinant RELM- β protein increased the intracellular Ca^{2+} concentration in primary cultured hPASMCs and promoted hPASMC proliferation. The mitogenic effects of RELM- β on hPASMCs and the phosphorylation of PI3K, Akt, mTOR, PKC, and MAPK were suppressed by a Ca^{2+} inhibitor.

Conclusions: Our findings suggest that RELM- β acts as a cytokine-like growth factor in the development of HPH and that the effects of RELM- β are likely to be mediated by the Ca^{2+} -dependent PI3K/Akt/mTOR and PKC/MAPK pathways.

Keywords: Hypoxic pulmonary arterial hypertension, Resistin-like molecule β , Ca^{2+} , SOCE, Pulmonary vascular remodeling, Signaling pathway

Introduction

Hypoxia-induced pulmonary hypertension (HPH) is a progressive and devastating complication of chronic obstructive pulmonary disease (COPD) that contributes to the morbidity and mortality of patients with various types of lung/heart diseases [1, 2]. Patients with severe COPD often suffer from flow limitation, which leads to alveolar hypoxia and hypoxemia. Sustained alveolar

*Correspondence: daiguo2003@163.com

[†]Heshen Tian, Lei Liu, Ying Wu and Ruiwen Wang have contributed equally

¹ Department of Respiratory Medicine & Department of Geriatric, Hunan Provincial People's Hospital/The First Affiliated Hospital of Hunan Normal University, Changsha 410016, Hunan, People's Republic of China
Full list of author information is available at the end of the article



hypoxia induces pulmonary vascular remodeling (HPVR) characterized by abnormal thickening of precapillary pulmonary vessel walls and muscularization of small pulmonary arteries [3, 4]. Abnormal pulmonary arterial smooth muscle cell (PASMC) proliferation is involved in HPVR due to narrowing of the lumen and an increase in the pulmonary circulatory resistance finally resulting in pulmonary arterial hypertension (PAH) [1, 5, 6].

Resistin-like molecule β (RELM- β) belongs to a newly described resistin-like molecule (RELM) gene family that encodes secreted proteins and is the direct ortholog of hypoxia-induced mitogenic factor (HIMF/RELM- α) [7, 8]. RELM- β is inherently expressed in colonic epithelial cells. Hypoxia and inflammation are the main pathological stimulators of RELM- β production in the lung [9–11]. Further studies have proved that high levels of RELM- β are present in patients with PAH, and RELM- β overexpression significantly enhances proliferation of transfected hPASMCs [12, 13]. This evidence suggests that RELM- β may play an important role in the HPH development due to its mitogenic effect. However, the expression of RELM- β at various stages of hypoxia and the mechanisms by which RELM- β causes abnormal PASMC proliferation have not been investigated.

Renigunta et al. [12, 14] showed that the proliferative effect of RELM- β can be suppressed by two PI3K (phosphatidylinositol 3-kinase) inhibitors and a protein kinase C (PKC) inhibitor, which was also observed in the case of HIMF in mouse cells [10, 11, 15]. PI3K and PKC are the key enzymes that mediate the proliferation of PASMCs by phosphorylating Akt (protein kinase B) and MAPKs (mitogen-activated protein kinases), respectively [16–18]. In an *in vitro* experimental study, Lee et al. [19] found that hypoxia induces Ca^{2+} -dependent phosphorylation of PI3K/Akt/mTOR and PKC/MAPKs in chicken hepatocytes. The PI3K/Akt and PKC signaling pathways activate cyclins E and D1 and cyclin-dependent kinases (CDK) 2 and 4 and promote cell proliferation and differentiation [20]. A recent study [21] demonstrated that HIMF increases intracellular Ca^{2+} concentration through CaSR (Ca^{2+} -sensing receptor) and a SOCE (store-operated calcium entry)-dependent manner and induces PASMC proliferation in PAH. Since RELM- β is known as a functional substitute for HIMF in humans [12], we sought to determine whether RELM- β can increase Ca^{2+} concentration in hPASMCs.

In the present study, the expression pattern of RELM- β in a rat model of HPH was evaluated and the hypothesis that RELM- β plays a role in HPVR and HPH was tested. We also investigated the role of RELM- β in PASMC proliferation and determined whether the mitogenic effect of RELM- β is mediated by the PI3K/Akt/mTOR and PKC/MAPK signaling pathways and whether Ca^{2+} is involved

in this process. Our results indicate that RELM- β may be a potential target for HPH therapy.

Material and methods

Hypoxia-induced rat PAH model

A total of 60 adult male Sprague–Dawley (SD) rats (260–330 g, 12 weeks old) with matched body weight and ages were randomly divided into the hypoxia and control groups. Hypoxia groups were exposed to normobaric hypoxia (10% oxygen environment) in a ventilated hypoxia chamber for three weeks according to the previous report [22]. Rats used for mRVSP measurement (similar to our previous report) were anesthetized with an *i.p.* injection of pentobarbital sodium (40 mg/kg) and a *s.c.* injection of buprenorphine (0.05 mg/kg). All of the rats were euthanized by exsanguination. Bronchoalveolar lavage fluid (BALF) was collected from the right lung (left lung was tied off by hemostatic clips) by tracheal injection with 2.5 ml of sterile saline solution under constant pressure (repeated three times). Recycled BALF was centrifuged, and the supernatant was stored at $-80\text{ }^{\circ}\text{C}$ for use in ELISA. Afterwards, the right lung was tied off, and the left lung was inflated with 4% paraformaldehyde fixing solution (Beyotime, CHN) at a constant pressure (25 cm H_2O). The heart and lungs were removed *en bloc* and placed on ice. The right lung was frozen in liquid nitrogen for use in Western blot or RT-PCR. The heart and left lung were immediately placed in 4% paraformaldehyde fixing solution (>5 volumes of each sample) at $4\text{ }^{\circ}\text{C}$ for 48–72 h fixing followed by paraffin embedding. RVHI was assessed based on the left/right ventricular weight ratio ($\text{RS/LV} + \text{S}$), and HPVR was assessed by the morphological analysis of small pulmonary vessels (wall thickness, WT%; wall area, WA%; and lumen area, LA%) by H&E staining. Isolation of intralobar pulmonary arteries was performed as described previously [22, 23]. Small lung arteries (external diameter between 25 and 200 μm) were classified as fully muscular (FM), partially muscular (PM), or nonmuscular (NM) according to the level of smooth muscle actin (α -SMA) staining. The percent media thickness (%MT) was calculated and measured as described [24]. The animals were obtained from the Animal Experimental Center of Hunan University of Chinese Medicine, China.

Knockdown and overexpression of RELM- β in vivo

Male Sprague–Dawley rats were used in this study. To perform RELM- β gene overexpression and knockdown, an effective short hairpin RNA (shRNAmiR) targeting rat RELM- β was constructed and subcloned into the lentiviral U6-MCS-Ubi-EGFP plasmid. The U6-MCS-Ubi-EGFP-RELM- β or U6-MCS-Ubi-EGFP-RELM- β -shRNAmiR plasmids and lentiviral packaging plasmid

were cotransfected into 293T cells (ATCC, Manassas, United States). The culture supernatant was harvested, and the viral titer was determined 48 h after the transfection. Six days before hypoxia exposure, the rats in each group received intratracheal instillation with Lv-EGFP-RELM- β -shRNAmiR or Lv-EGFP-RELM- β plasmids (1.5×10^8 transducing units in a total volume of 150 μ l at a daily dose of 50 μ l for 3 days) as described previously [25]. The control group was treated with an equal amount of lentiviral (Lv)-null or saline, and other conditions were identical. Frozen sections of the lung were used to visualize EGFP expression as described [25]. After 21 days of exposure to hypoxia or normoxia, the expression of RELM- β mRNA and protein in the rat lung was detected by Western blot and real-time PCR.

Cell culture and pretreatment

PASMCs were identified by expression of α -actin ($\geq 95\%$ of the cells) by immunofluorescence using an antibody against α -SMA (1:200, Abcam, USA). Primary human pulmonary artery SMCs (ScienCell Research Laboratories, USA) were maintained in a Petri dish containing prechilled PBS, 2% penicillin–streptomycin, Ca^{2+} -free HBSS, and 0.5% fetal calf serum mixed with 20% DMEM/F12 medium (Billups-Rothenberg, Del Mar, USA). Then, the cells were cultured in an atmosphere containing 5% CO_2 and 21% O_2 or 3% O_2 in a humidified incubator at 37 °C for 3, 6, 12, 24, and 48 h for normoxia or hypoxia treatments, respectively. For cell proliferation, Ca^{2+} imaging, and detection of the phosphorylation signaling pathway, PASMCs were pretreated with cyclopiazonic acid (CPA), nifedipine (Nifed), EGTA (Santa Cruz, USA), BAPTA/AM (Santa Cruz, USA), LY294002 (Santa Cruz, USA), Perifosine (Santa Cruz, USA), LY317615 (Santa Cruz, USA), rapamycin (Santa Cruz, USA), or PD98059 (Santa Cruz, USA) and seeded onto 25 mm glass coverslips as indicated. Then, various concentrations of recombinant human RELM- β protein (0–40 ng/ml, Abgent, USA) were used to stimulate PASMCs for various periods (0–72 h). Cells of passages 3–7 were used in the experiments. When cells in the logarithmic growth phase reached a density of 70%, cell cycle was synchronized by incubation in the serum-free medium for 24 h.

Cell viability and proliferation assay

Cell viability was determined using a CCK-8 cell counting kit (Beyotime Biotechnology, Jiangsu, China) according to the manufacturer's protocol. After the treatments, 10 μ l of CCK-8 solution was added to each well and incubated for 1 h. The absorbance of each well was measured at a wavelength of 450 nm using a microplate reader (BMG LABTECH, Durham, NC, USA). The cell proliferation assay was performed using EdU immunofluorescent

staining as described previously [26]. For each EdU experiment, three random fields were imaged at $\times 20$ magnification, and the fraction of EdU-positive cells was calculated as the percentage of the total number of cells in each field.

H&E staining and immunohistochemistry

Paraffin-embedded rat lung tissue was sectioned, dewaxed, and rehydrated as described previously [22]. Hematoxylin and eosin (H&E) staining was performed according to the operation manual of a hematoxylin and eosin staining kit (Beyotime, CHN). IHC was performed as described [23]. After blocking nonspecific protein binding, the sections were treated with mouse anti- α -SMA (1:500, Boster, Wuhan, CHN), anti-p-PI3K/anti-PI3K (1:100, Abcam, USA), anti-p-Akt/anti-Akt (1:200, Abcam, UK), anti-p-mTOR/anti-beta-actin (1:100, Abcam, UK), anti-p-PKC/anti-PKC (1:250, Cell Signaling, USA), or anti-p-p44/42/anti-p44/42 antibodies (1:250, Cell Signaling, USA) followed by incubation for 2 h with goat anti-rabbit secondary antibodies (HPR, Boster, CHN); then, ABC horseradish peroxidase reagent (Boster, CHN) was added for 30 min at room temperature. The secondary antibody controls (negative control) were incubated in PBS instead of the primary antibody. Specimens were observed under a fluorescent inverted microscope (IX73-A22FL/PH; Olympus Corporation, Japan), and images were captured by using the Image-Pro Plus software (version 6.0). The average optical density (IOD/area) was used as a semiquantitative index for analysis of the positive signals.

Immunofluorescence

For the immunofluorescence assay, the lung sections were treated with rabbit anti-RELM- β polyclonal antibodies (1:200, Abcam, UK) and mouse anti- α -SMA antibody (1:500) or the corresponding vehicle overnight at 4 °C. Then, the sections were incubated with FITC-conjugated AffiniPure goat anti-mouse IgG (H + L) (1:50, Boster, CHN) (excitation: 495 nm, emission: 525 nm) and Cy3-conjugated AffiniPure goat anti-mouse IgG (H + L) (1:50, Boster, CHN) (excitation: 554 nm, emission: 568 nm) for 45 min at room temperature in the dark. Finally, the sections were washed in PBS and mounted with Vectashield hardset mounting medium with 4',6-diamidino-2-phenylindole dilactate (DAPI, Vector Laboratories, USA). Specimens were observed under a fluorescent inverted microscope (IX73-A22FL/PH; Olympus Corporation; light source: UHP) attached to a CCD digital camera (512B Cascade, Roper Scientific, Tucson, AZ). Blue (WU) and green filters (WIBA) were used to detect FITC (green) and Cy3 (red) signals, respectively. The objectives used were $20\times$ and $40\times$. Images were captured by using

the Image-Pro Plus software (version 6.0) and colored with Adobe Photoshop CS6 software (Adobe Systems, Inc., San Jose, CA).

Western blot analysis

PASMCs and isolated pulmonary artery and rat tissue samples were homogenized, and protein electrophoresis and Western blot were performed as described previously [22]. BCA assay was used to estimate the protein concentration. Protein (40 μ g) or medium supernatant (40 μ l) samples were loaded onto 6–20% polyacrylamide gels (Bio-Rad). After electrophoresis, proteins were transferred to the nitrocellulose membranes (Bio-Rad) and stained with rabbit anti-RELM- β (1:500, Abcam, UK) or antibodies against phosphorylated and nonphosphorylated PI3K, Akt, mTOR, PKC, and MAPK (1:500 or 1:1000, Santa Cruz, USA) followed by incubation with goat anti-rabbit HRP-labeled secondary antibodies (1:3000, Boster, CHN). Following washing, an enhanced chemiluminescence substrate kit (Boster, CHN) was used for chemiluminescent signals detection. Membranes were imaged on autoradiography image system (Protein-Simple FE 1004, San Jose, USA) and quantified by densitometry with image analysis software (ImageJ).

ELISA of RELM- β

The RELM- β concentrations in the serum prepared from the peripheral blood (PB) and in BALF were determined using an enzyme-linked immunosorbent assay (ELISA) kit from QiMing (Shanghai, China). The assay was carried out according to the manufacturer's instructions.

Real-time PCR analysis

To quantify the gene transcripts of RELM- β , an RNeasy mini kit (Qiagen) was used to extract total RNA from the right lower lung lobe of the rats (200 mg), isolated pulmonary artery, and PASMCs following the manufacturer's protocol. RT-PCR was conducted using a miScript SYBR Green PCR kit (Qiagen Inc., Valencia, CA). The PCR primers were as follows: rat RELM- β , 5'-CTCCCA CTGATAGTCCCA-3' and 5'-CACAGCCATAGCCAC AAG-3' with a 187 bp amplicon; rat GAPDH, 5'-CAT CCTGCGTCTGGACCTGG-3' and 5'-TAAT GTCACG CACGATTTCC-3'; human RELM- β , 5'-CTGTCACTG GCTGTCTTGT-3' and 5'-TTGGGA CCCTGGTTT CAT TA-3' with a 182 bp amplicon; and human GAPDH, 5'-AGACAGCC GCATCTTCTTGT -3' and 5'-TGA TGGCAACAATGTCCACT-3'. The $2^{-\Delta\Delta C_t}$ method was used to calculate the relative fold changes.

Imaging of intracellular Ca^{2+}

The intracellular Ca^{2+} assay was performed according to the previously described protocol [26]. Human PASMCs

pretreated with 3.5 μ mol/L Fura-2-AM (Invitrogen, USA) were incubated for 1 h at 37 °C and washed twice with Ca^{2+} -containing buffer or HBSS (Sigma). Coverslips with hPASMCs were mounted onto a closed polycarbonate chamber clamped on a heated aluminum platform (PH-2; Warner Instrument, Hamden, CT, USA) on the stage of an inverted microscope (Leica, Melville, NY, USA). Then, the cells were alternately stimulated with RELM- β , Ca^{2+} -containing buffer, or HBSS through a tee irrigation device. The fluorescence was recorded at 12 s intervals over 10 min using a dual-wavelength excitation fluorimeter. Fluorescent emission was acquired at 510 nm from the regions of interest corresponding to single cells after excitation at 340 and 380 nm (shift in excitation wavelength upon Ca^{2+} binding) in 15–30 cells using a xenon arc lamp, interference filters, an electronic shutter, and a $\times 20$ fluorescence objective. The data are expressed as the 340/380 nm fluorescence ratio, which reflects the cytosolic free calcium concentration (proportional to $[Ca^{2+}]_i$).

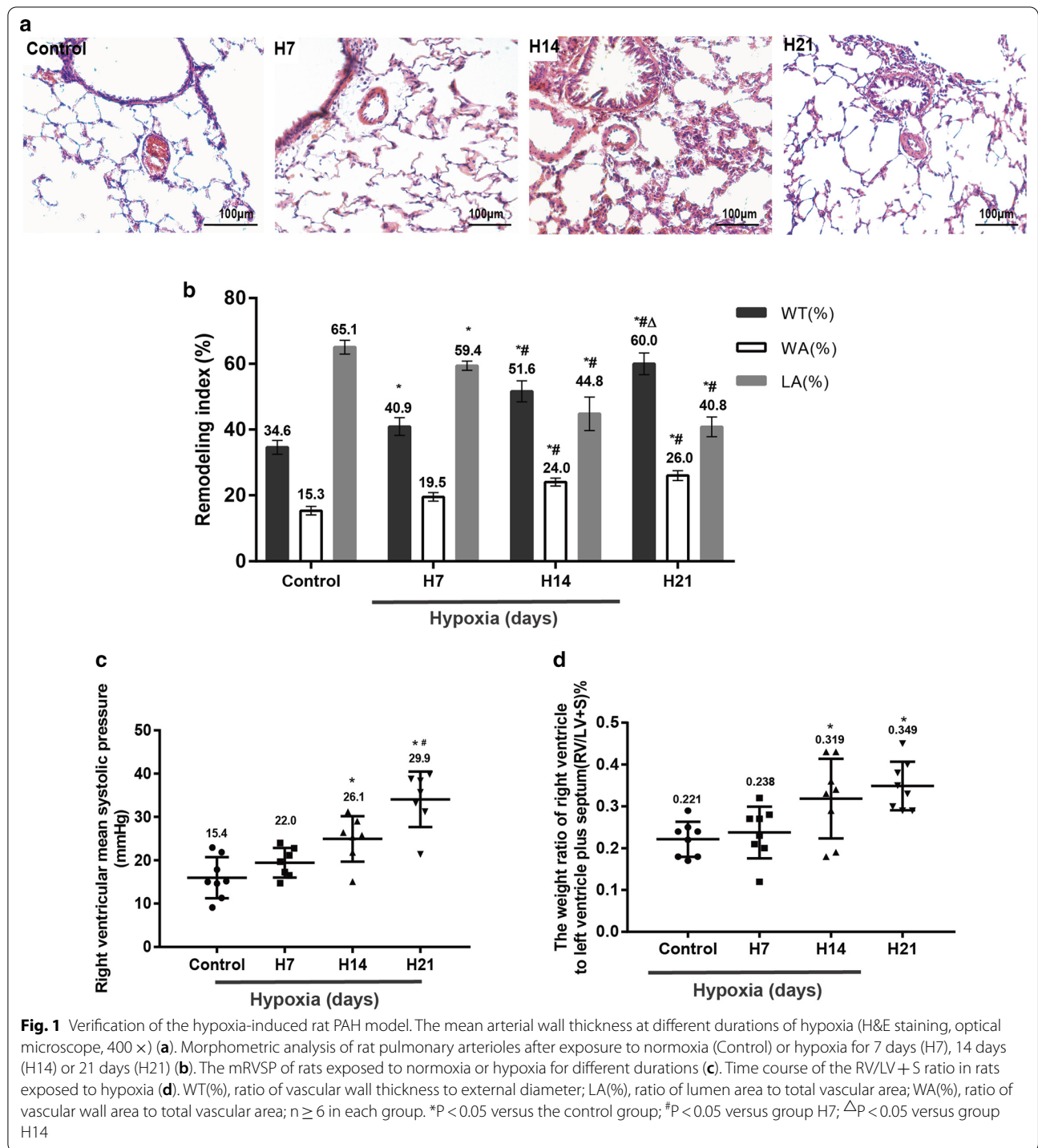
Statistical analysis

The data were analyzed using the SPSS 18.0 statistical software. Data are expressed as the mean \pm SD. Significant differences between two independent groups were determined using Student's *t*-test. For multiple groups, the statistical analyses were performed by ANOVA followed by Tukey's test. *P* values less than 0.05 were considered significant.

Results

Validation of the HPH rat model

The H&E staining results showed that after hypoxia exposure, the pulmonary artery wall thickness was generally increased and the vascular lumen was narrowed after 7 days of hypoxia (Fig. 1a); these values were maximal at 14 days and remained constant for 21 days of hypoxia; these alterations were statistically significant compared with the parameters of the control group ($P < 0.05$) (Fig. 1b). Rats manifested profound pulmonary arterial hypertension and right ventricular hypertrophy when examined 21 days after hypoxia induction. Mean PAP (assessed as mRVSP) was measured in conscious rats (mRVSP in normoxic animals was 15.7 ± 1.3 mm Hg). As expected, hypoxic animals developed PH after 7 days of hypoxia ($P > 0.05$). mRVSP peaked at 14 days and remained at high levels on day 21 after hypoxia induction ($P < 0.05$) (Fig. 1c). The ratio of RV/(LV + S) in the hypoxia groups showed similar trends (Fig. 1d). These changes in the pulmonary arteries indicated that the model of vascular PAH induced by hypoxia was successfully established.



Hypoxia enhances RELM-β expression in the rat lung

Previous studies using an asthma model and a pulmonary fibrosis model in rodents have shown that RELM-β has inducible properties [13, 27]. In the present study, we estimated the expression pattern of RELM-β in a rat HPH model for the first time. In the normoxia group, RELM-β immunoreactivity was very weak but was significantly

increased after 7 days of hypoxia in the pulmonary artery media compared with that in the control group (P < 0.01), peaking after 14 days of hypoxia. Then, the RELM-β protein level was reduced but remained higher than that in the normoxia group (P < 0.01) and the 7-day hypoxia group (P < 0.05) (Fig. 2a). A similar trend was detected in RELM-β mRNA expression assessed by RT-PCR

(See figure on next page.)

Fig. 2 Expression pattern of RELM- β in tissues from an HPH rat model. WB analysis of RELM- β protein expression in rat pulmonary tissue of the control group, H7 group, H14 group and H21 group (a). Quantitative real-time PCR (RT-PCR) results of RELM- β mRNA expression in pulmonary artery muscle at different durations of hypoxia (b). Enzyme-linked immunosorbent assay (ELISA) analysis showing that the serum concentration of RELM- β protein continued to rise, but in the bronchial alveolar lavage fluid, the concentration showed a trend of first increasing and then decreasing, probably due to its paracrine characteristics and regional differences (c). Immunofluorescence colocalization of RELM- β and α -SMA after exposure to hypoxia suggests that RELM- β is expressed in pulmonary arteries (white arrow: pulmonary artery smooth muscle, 400 \times) (d). PB, peripheral blood. $n \geq 6$ in each group. * $P < 0.05$ versus the control group; ** $P < 0.01$ versus the control group; [#] $P < 0.05$ versus group H7; ^{Δ} $P < 0.05$ versus group H14

($P < 0.01$) (Fig. 2b). RELM- β concentrations in the peripheral serum (PB) and BALF were assayed (see Fig. 2c). Additionally, the lung sections had strong RELM- β immunofluorescence colocalized with α -SMA in the smooth muscle of the pulmonary artery (Fig. 2d). Our results suggest that hypoxia induces sustained RELM- β expression in rat pulmonary artery and lung for at least 21 days.

Effects of RELM- β on HPH and cardiac and pulmonary artery remodeling

RELM- β is a secreted protein that has a proliferative effect on PASMCs [12, 28]. To verify the role of RELM- β , gene transfer and silencing of RELM- β were performed in rat lungs. After treatment with Lv-null, Lv-RELM- β , or Lv-RELM- β -RNAi viruses via intratracheal injection, the rats were exposed to normoxia or hypoxia for three weeks. Frozen lung sections from Lv-EGFP-injected rats displayed strong green fluorescence in the lung and pulmonary artery wall confirming that the plasmids were correctly delivered to the targets (Fig. 3a). The results showed that the mRNA and protein levels of RELM- β in the overexpression group were higher compared with those in the Lv-NC and Lv-RELM- β knockdown (kd) groups under the normoxic or hypoxic conditions ($P < 0.05$). Introduction of Lv-RELM- β -RNAi reduced RELM- β upregulation by hypoxia ($P < 0.05$), whereas the Lv-null virus did not influence RELM- β expression (Fig. 3b, c).

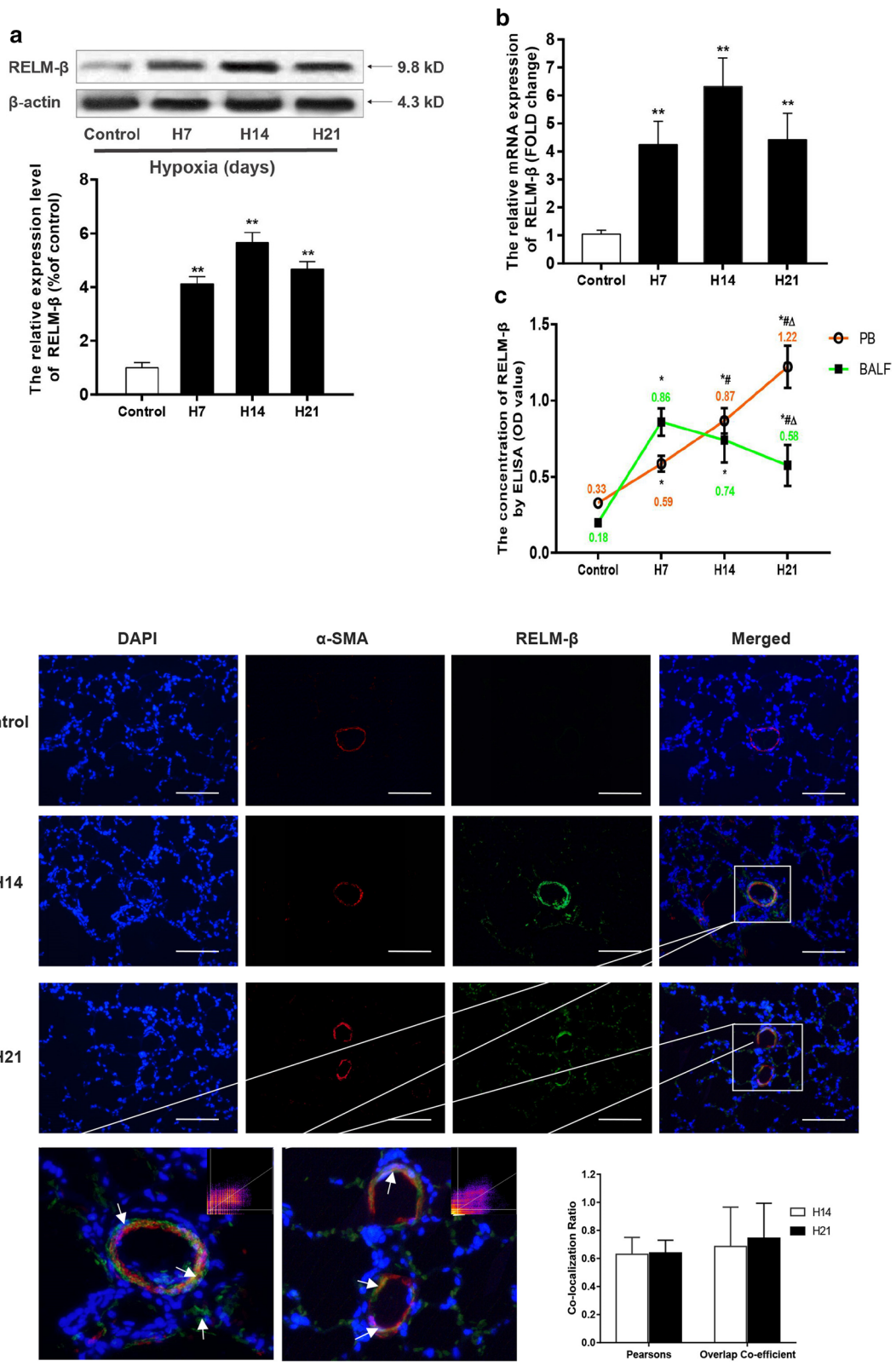
Compared with the control group, the Lv-RELM- β group manifested increased mRVSP (Fig. 3d), RS/LV + S (Fig. 3e), and pulmonary artery wall thickness (Fig. 4a) ($P < 0.05$); these effects were similar to the influence of hypoxia. However, the hypoxia plus RELM- β overexpression (oe) group did not have significant differences compared with the RELM- β overexpression under normoxia group; there were no differences between the normoxia + RELM- β kd and normoxia + NC groups and between the hypoxia + RELM- β oe and hypoxia + NC groups ($P > 0.05$). Moreover, RELM- β gene silencing resulted in significant attenuation of mRVSP and pulmonary artery wall thickness in the rat model of HPH ($P < 0.05$) (Figs. 3d and 4a).

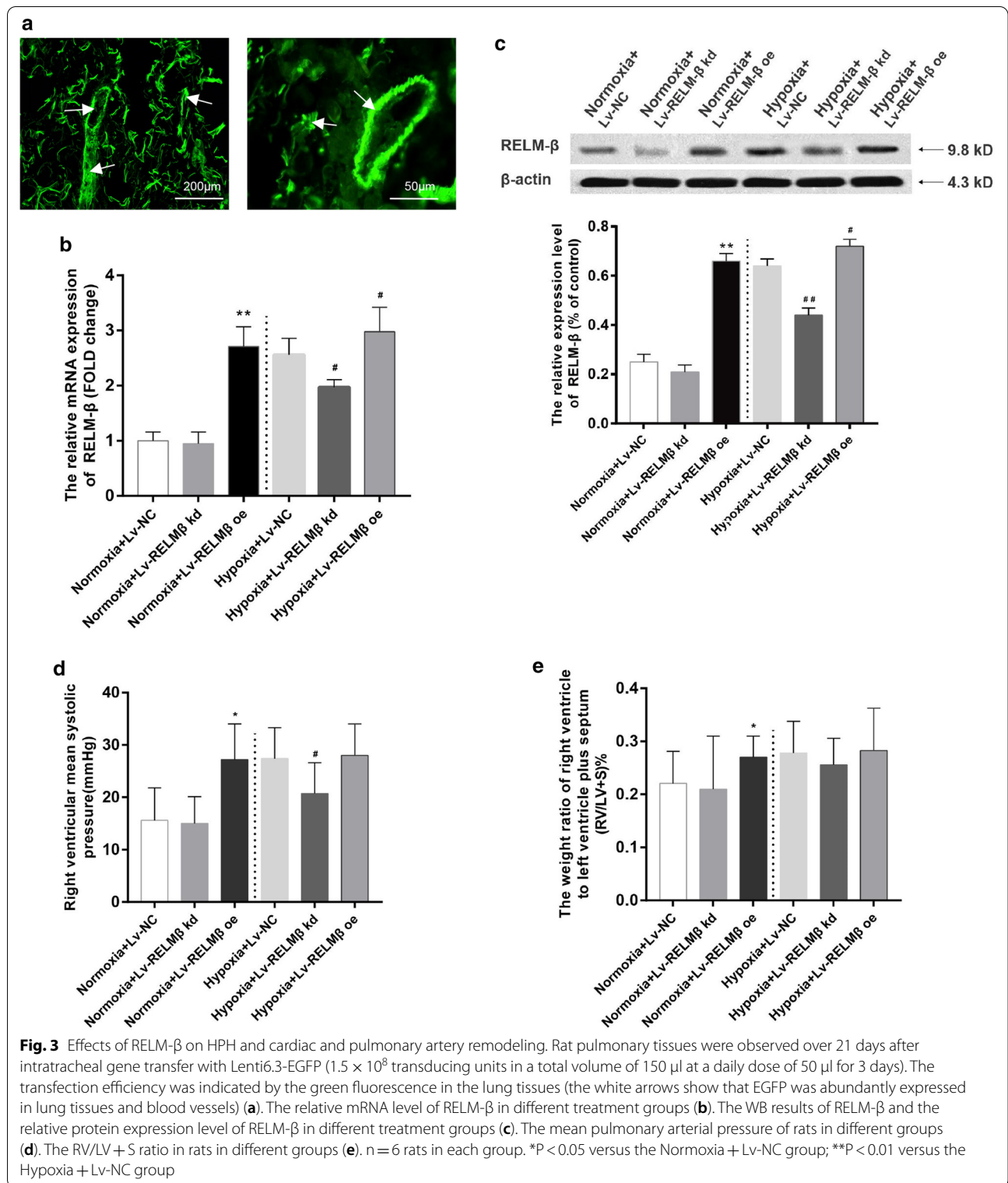
External diameter of small arterioles (25–200 μ m) was measured to estimate percentage of media thickness (%MT) and muscularization by histological staining. As shown in Fig. 4a, b, α -smooth muscle actin positive staining and %MT were increased in the normoxia + RELM- β oe group and in rats exposed to 21 days of hypoxia and substantially reduced in the hypoxia + RELM- β kd group in small (50–100 μ m) ($P < 0.01$) and large vessels (100–200 μ m) ($P < 0.05$). RELM- β gene silencing also substantially decreased the percentage of NM small arteries and increased the percentage of PM and FM small arteries under hypoxic conditions ($P < 0.05$) but there was no statistically significant difference under normoxic conditions ($P > 0.05$). RELM- β overexpression displayed an opposite trend and influenced small artery muscularization ($P < 0.05$) (Fig. 4b). These results indicate that RELM- β enhances mRVSP and associated cardiopulmonary vascular remodeling in the HPH rat model.

Effects of RELM- β on phosphorylated PI3K, Akt, mTOR, PKC, and MAPK proteins

Inhibition of PI3K and PKC has been shown to suppress the PASMC proliferation induced by RELM- β ; hence, we hypothesized that these signaling pathway proteins are the regulators downstream of RELM- β in an HPH rat model. Immunohistochemistry results showed that p-PI3K, p-Akt, p-mTOR, p-PKC, and p-MAPKs levels in the media of small pulmonary arteries and lung of rats exposed to hypoxia or treated with RELM- β overexpression vector were increased compared with those in the control groups ($P < 0.05$) (Fig. 5a). The relative expression levels measured as IOD values showed that the effect of hypoxia on phosphorylation of Akt, mTOR, and PKC was significantly reduced by knockdown of RELM- β ($P < 0.05$) (Fig. 5b, c).

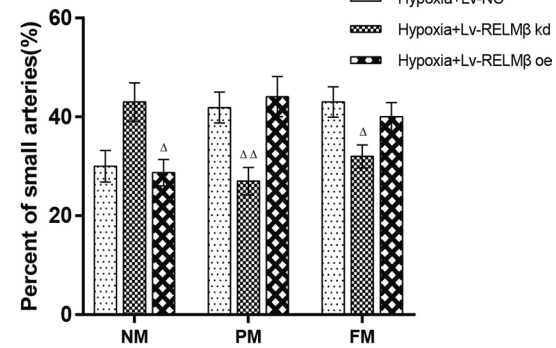
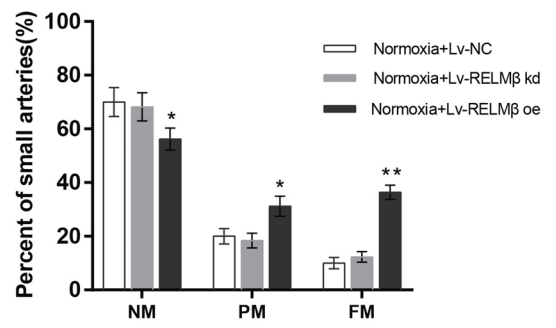
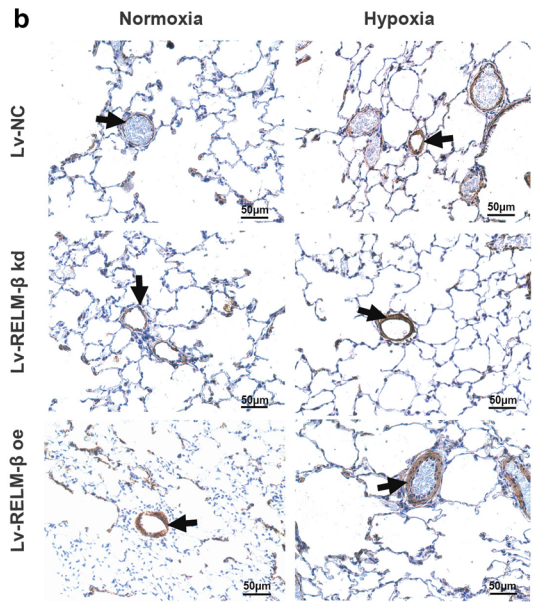
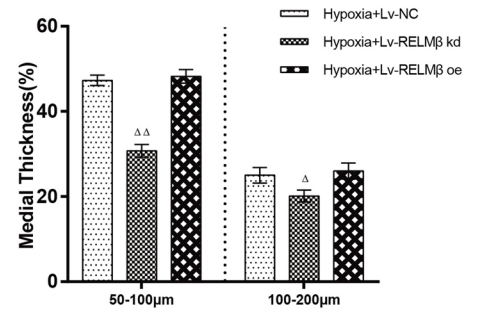
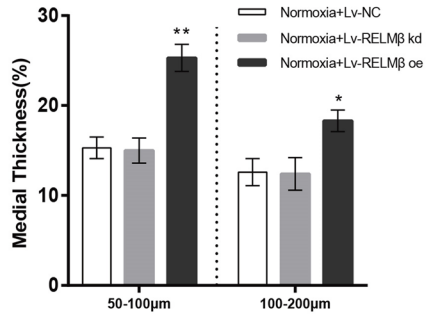
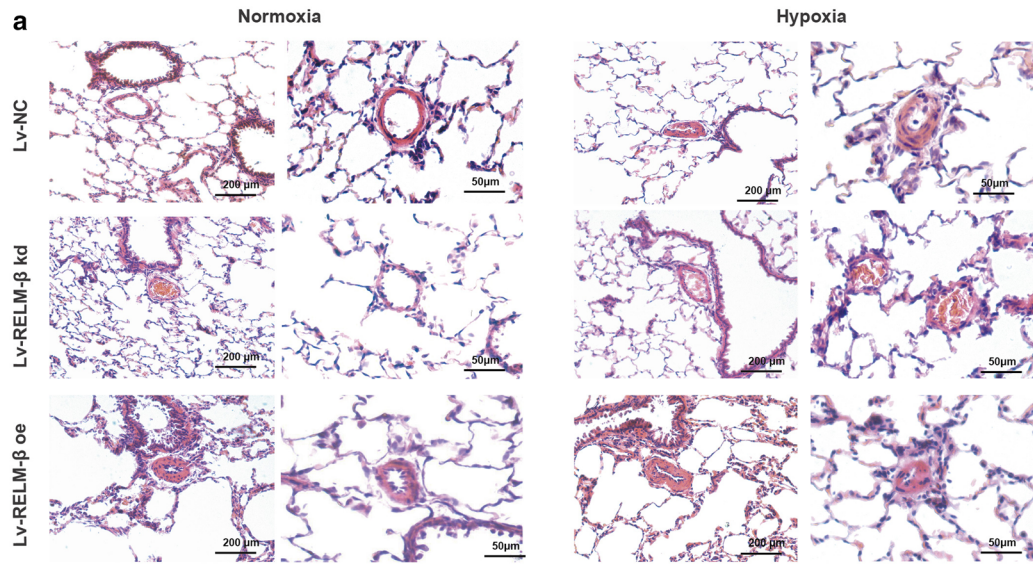
Isolated pulmonary arterioles and lung tissue homogenates were used to perform Western blot (Fig. 6a). The results of relative quantification demonstrated that the p-PI3K/PI3K ratio was considerably increased in the Lv-RELM- β -treated rats compared with that in untreated rats under normoxia ($P < 0.01$). RELM- β knockdown significantly decreased the p-PI3K/PI3K ratio compared with that in the hypoxia + NC group ($P < 0.01$) (Fig. 6b).





The changes in the relative levels of phosphorylated Akt (Fig. 6c), mTOR (Fig. 6d), PKC (Fig. 6e), and MAPK (p44/42) (Fig. 6f) were similar to those detected in the

case of PI3K and were statistically significant ($P < 0.01$). Although there was no regular pattern in each group, the results indicated that RELM-β plays a similar role in



(See figure on previous page.)

Fig. 4 Proremodeling effect of RELM- β in pulmonary arterioles. The mean arterial wall thickness in different groups was examined by H&E staining (scale bar: 50 μ m). Morphometric analysis of rat pulmonary arterioles of different external diameters after exposure to normoxia or hypoxia for 21 days in different groups (a). The walls of small arterioles were stained with antibodies against α -smooth muscle actin and the muscularization of small pulmonary arteries is indicated as NM, PM, and FM in rat lungs 21 days after initial intratracheal instillation of lentivirus. The mean arterial wall thickness examined by H&E staining in different groups (scale bar: 200 μ m) (b). NM nonmuscular, PM partially muscular, FM fully muscular. n = 6 rats in each group; the number of vessels counted is ≥ 20 for each bar. *P < 0.05 versus the Normoxia + Lv-NC group; **P < 0.01 versus the Normoxia + Lv-NC group; Δ P < 0.05 versus the Hypoxia + Lv-NC group; $\Delta\Delta$ P < 0.01 versus the Hypoxia + Lv-NC group

phosphorylation of these signal molecules in hypoxia (see Fig. 6b–f). Overall, the evidence suggests that RELM- β may promote mRVSP increase and pulmonary vascular remodeling, at least in part, through the PI3K/Akt/mTOR and PKC/MAPKs signaling.

RELM- β promotes proliferation and Ca²⁺ release in cultured primary hPASMCs

Previous studies have shown that the ortholog of RELM- β can increase intracellular Ca²⁺ via extracellular calcium influx in PASMCs [16, 21]. To detect a direct effect of RELM- β on cell proliferation and Ca²⁺ signaling, primary PASMCs were cultured. Light microscopy detected typical "peak-valley" growth of smooth muscle cells. The results of α -SMA immunofluorescence staining showed that the cytoplasm of the cells has red fluorescence signal distributed along the myofilaments and arranged in parallel patterns (see Fig. 7a, b). Treatment of PASMCs with hypoxia upregulated RELM- β protein and mRNA expression in a time-dependent manner (3, 6, 12, 24, and 48 h), and the maximal levels were detected at 12 and 24 h (P < 0.01 compared with those in the control group) (see Fig. 7c–e) confirming that hypoxia induces RELM- β in PASMCs.

Then, PASMCs were treated with various concentrations of recombinant RELM- β for 0, 24, 48, and 72 h. The CCK-8 assay showed that cell viability was the highest at 48 h at each concentration of RELM- β , and 20 ng/ml RELM- β had the maximum effect (Fig. 8a). The EdU assay results confirmed that treatment of hPASMCs with 20 ng/ml RELM- β for 48 h promotes cell proliferation (P < 0.01) (Fig. 8b). To determine whether RELM- β -induced hPASMCs proliferation is associated with SOCE, [Ca²⁺]_i were monitored by fura-2 fluorescence imaging (340/380 nm ratio, F340/F380). As shown in Fig. 8d, SOCE activated by depletion of Ca²⁺ stores with

CPA significantly increased in hPASMCs treated by 20 ng/ml RELM- β for 48 h (0.62 \pm 0.06 for RELM- β treatment cells, and 0.23 \pm 0.04 for control cells; P < 0.05). Our results indicate that RELM- β promotes the proliferation and Ca²⁺ influx of hPASMCs.

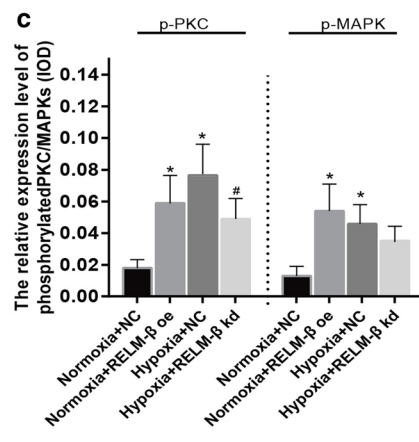
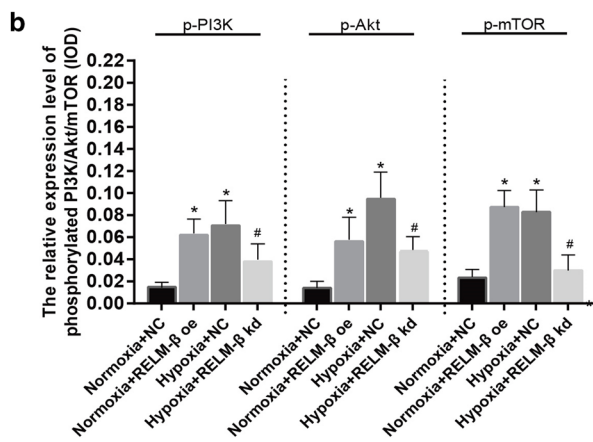
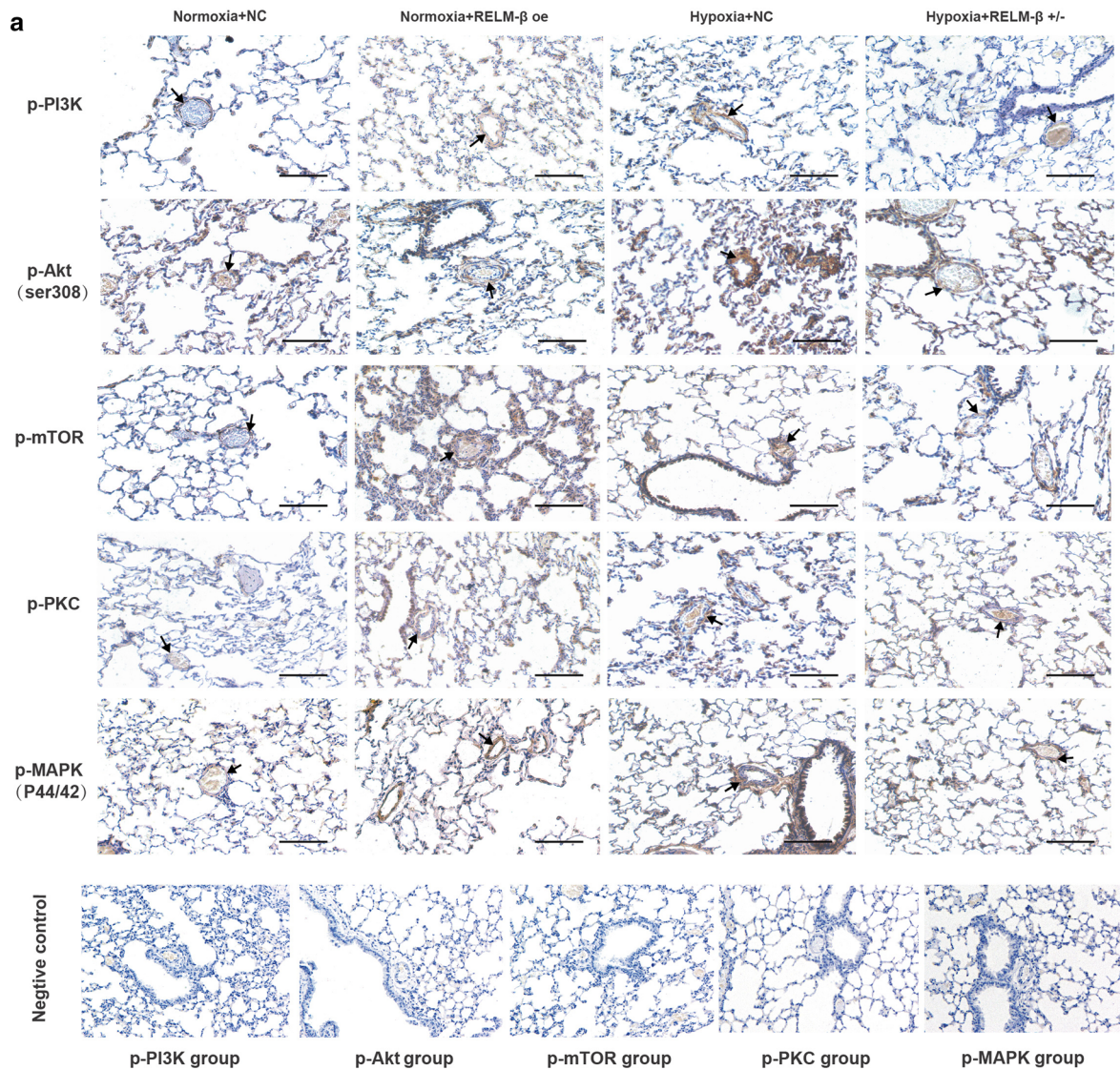
Ca²⁺ is involved in the activation of the PI3K/Akt/mTOR and PKC/MAPK pathways and PASMC proliferation stimulated by RELM- β

To investigate whether Ca²⁺ plays a role in hPASMC proliferation induced by RELM- β and is an upstream regulator of the PI3K/Akt/mTOR or PKC/MAPK signaling pathways, cells were pretreated with the intracellular Ca²⁺ antagonist BAPTA-AM (10 μ M) or the extracellular Ca²⁺ antagonist EGTA (4 mM) with 0 mM Ca²⁺ in extracellular media and were then treated with 20 ng/ml RELM- β for 48 h.

The Western blot results showed that the levels of phosphorylated PI3K, Akt, mTOR, PKC, and MAPK proteins were significantly increased by RELM- β stimulation (P < 0.01) (see Fig. 9a, b). EGTA treatment significantly inhibited the phosphorylation of these proteins compared with that in the RELM- β group (P < 0.01). However, BAPTA treatment did not inhibit PI3K, Akt, mTOR, PKC, or MAPK phosphorylation (P > 0.05) (see Fig. 7a, b). As shown in Fig. 7c, cell proliferation induced by RELM- β was suppressed by two Ca²⁺ chelators. Additionally, the RELM- β + EGTA group had a 12% lower proliferation assessed by the EdU assay compared with that in the RELM- β + BAPTA-AM group (P < 0.05). This decrease may result from preferential stimulation of extracellular Ca²⁺ influx and not intracellular Ca²⁺ release by RELM- β . This result suggests that Ca²⁺ is essential for RELM- β -induced activation of the PI3K/Akt/mTOR or PKC/MAPK signals and PASMC proliferation.

(See figure on next page.)

Fig. 5 Alteration of phosphorylated PI3K/Akt/mTOR and PKC/MAPK proteins by RELM- β . Immunohistochemical analysis of phosphorylated PI3K/Akt/mTOR and PKC/MAPK proteins in lung tissue (positive signals in pulmonary arteries were used for analysis); the black arrows indicate that these phosphorylated proteins occur in remodeled pulmonary arteries (scale bar: 200 μ m) (a). The IOD value of phosphorylated PI3K/Akt/mTOR in different groups (b). The IOD value of phosphorylated PKC/MAPKs in different groups (c). n = 6 rats in each group; the number of vessels counted is ≥ 20 for each bar. *P < 0.05 versus the Normoxia + Lv-NC group. #P < 0.05 versus the Hypoxia + Lv-NC group



(See figure on next page.)

Fig. 6 Alteration of phosphorylated PI3K/Akt/mTOR and PKC/MAPK proteins by RELM- β . The WB results of phosphorylated PI3K/Akt/mTOR and PKC/MAPK protein-isolated pulmonary arteries (a). The relative expression level of p-PI3K in isolated pulmonary arteries (b). The relative expression level of p-Akt in isolated pulmonary arteries (c). The relative expression level of p-mTOR in isolated pulmonary arteries (d). The relative expression level of p-PKC in isolated pulmonary arteries (e). The relative expression level of p-MAPK in isolated pulmonary arteries (f). n = 6 in each group. *P < 0.05 versus the Normoxia + Lv-NC group; **P < 0.01 versus the Normoxia + Lv-NC group; #P < 0.05 versus the Hypoxia + Lv-NC group; ##P < 0.01 versus the Hypoxia + Lv-NC group

Involvement of PI3K/Akt/mTOR and PKC/MAPKs in RELM- β -induced PASM C proliferation

Our previous results and the data of others authors [14, 29] have shown that the PI3K and PKC signaling pathways are downstream of RELM- β in the hypoxia-induced PASM C proliferation. To determine the role and mechanism of action of RELM- β in vitro, the levels of phosphorylated proteins of each signaling component were assessed by Western blot analysis. As shown in Fig. 10a, b, phosphorylated Akt and mTOR levels were significantly suppressed by a PI3K inhibitor LY294002 compared with those detected in the recombinant RELM- β group (P < 0.01) but remained higher than those in the control group (P < 0.05). Levels of phosphorylated mTOR protein were also decreased by pretreatment of the cells with an Akt inhibitor perifosine (P < 0.01). Akt and mTOR are downstream of PI3K, and mTOR is downstream of Akt. As shown in Fig. 10c, the level of phosphorylated p-MAPK in the group treated with a PKC inhibitor LY317615 was statistically significantly different from that in the RELM- β group (P < 0.01) indicating that MAPKs are the downstream effectors of PKC.

The effects of PI3K/Akt/mTOR and PKC/MAPKs on RELM- β -induced PASM C proliferation were also investigated using the EdU assay. As shown in Fig. 10d, e, the proliferation of PASM Cs was significantly suppressed in the PI3K inhibitor, Akt inhibitor, mTOR inhibitor, PKC inhibitor, and MAPK inhibitor groups compared to that in the RELM- β group (P < 0.01). Finally, our results showed that RELM- β induces PASM C proliferation via the PI3K/Akt/mTOR and PKC/MAPK signaling pathways.

Discussion

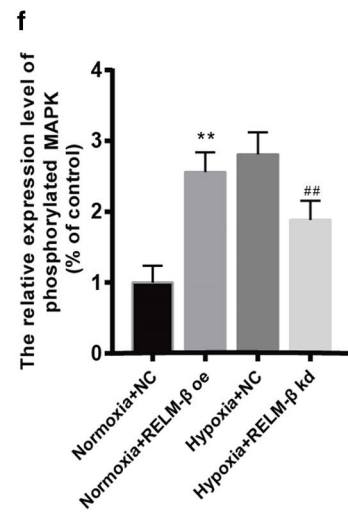
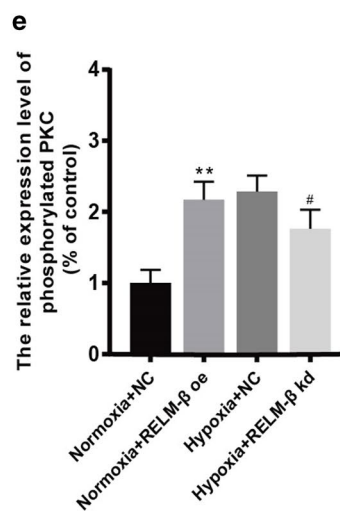
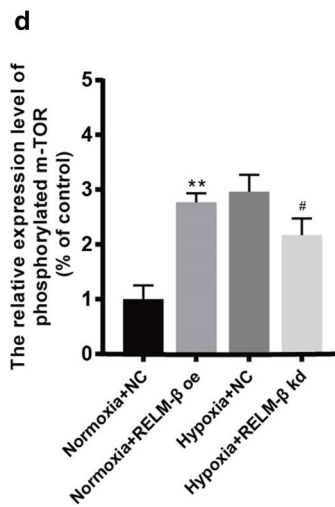
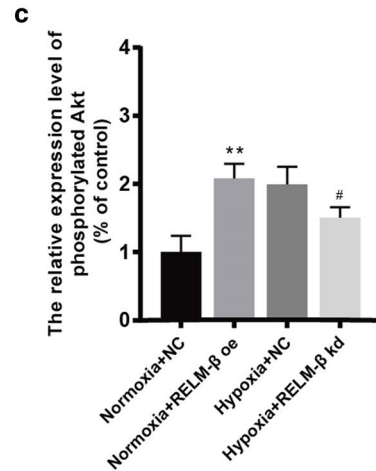
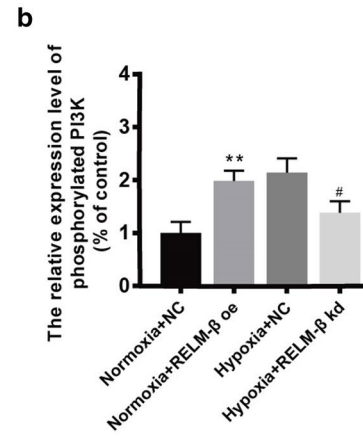
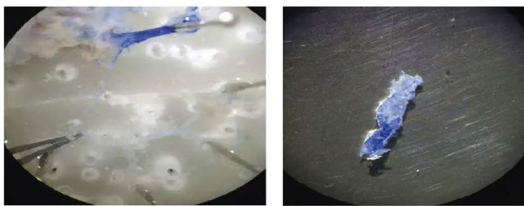
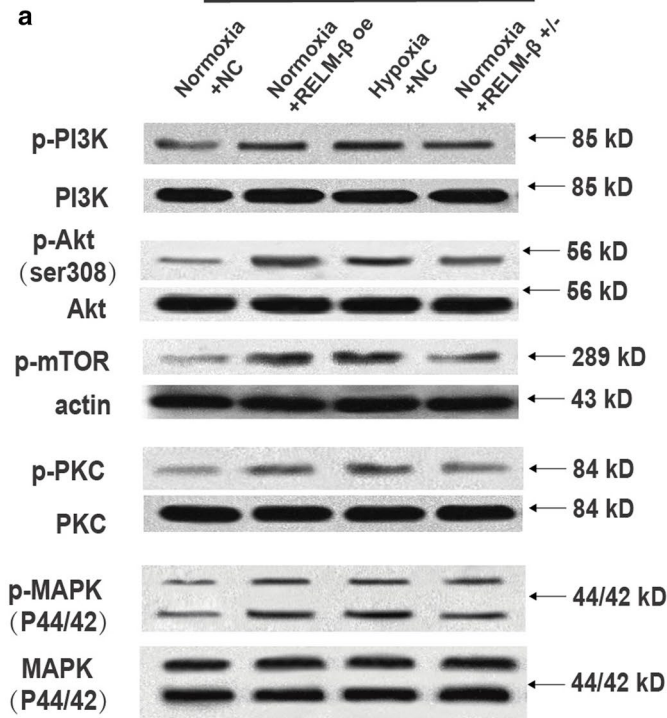
Hypoxia-induced pulmonary hypertension (HPH) is a severe complication of advanced COPD. The disease is characterized by abnormal PASM C proliferation and subsequent pulmonary artery remodeling. We initially focused on RELM- β because of its mitogenic effect on several types of lung cells and especially on PASM Cs [12, 14, 29] and its high expression in the pulmonary artery of patients with PAH [14]. The results of the present study demonstrate that RELM- β is endogenously expressed in vivo and in vitro after hypoxic stimulation. RELM- β significantly promotes PASM C proliferation and

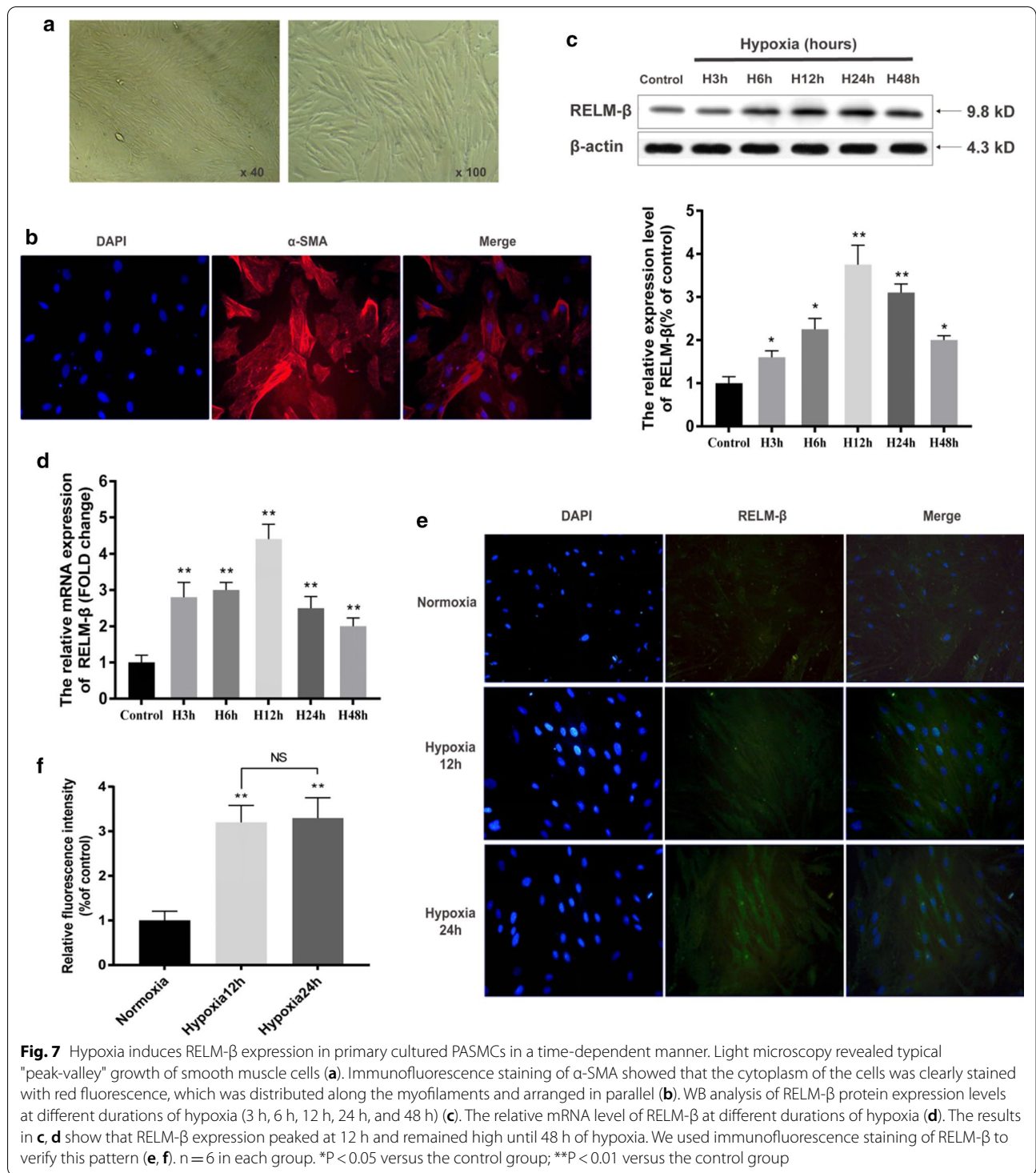
pulmonary vascular remodeling in response to hypoxia. The proliferative effect of RELM- β is apparently related to the Ca²⁺, PI3K/Akt/mTOR, and PKC/MAPK signaling pathways. To the best of our knowledge, this is the first report describing the role of RELM- β in HPH and increase in [Ca²⁺]_i in hPASM Cs.

RELM- β belongs to a highly conserved secretory protein family (RELMs) that includes two key members: RELM- α (FIZZ1/HIMF) and RELM- β (FIZZ2) [7]. RELM is a newly defined protein family discovered by Holcomb during the investigation of airway inflammation in allergic asthma [30]. RELM- β is inherently expressed in colonic epithelium, and its expression can be upregulated to a high level in airway smooth muscle or lung tissue by an allergen [27, 31] or bleomycin [13, 14] and in lung fibroblasts, macrophages, and SMCs by hypoxia [12, 32]. The results of the current study indicate that chronic hypoxia induces endogenous RELM- β in the lung of rats in a HPH model at the mRNA or protein level. Strong RELM- β immunostaining is colocalized with α -SMA in the remodeling pulmonary arteries, which is in agreement with the data on the location of RELM- β in PAH patients [14]. This expression pattern is similar to that of RELM- α in an HPH rat model [24]. Additionally, the level of RELM- β in BALF is decreased after 7 days of hypoxia, which is consistent with the trends observed in the serum and lung. This decrease may be because chronic hypoxia mainly increases RELM- β in the pulmonary vasculature rather than in alveolar epithelium (see Fig. 2d), and higher level of RELM- β is secreted into the circumvasculature and lumen. Consistent with the in vivo results, the data in hPASM Cs showed that hypoxia upregulates RELM- β in a time-dependent manner. These data indicate that RELM- β plays a role in HPH through the autocrine and paracrine mechanisms.

Similar to other cytokines participating in PASM C proliferation, such as TGF- β and VEGF-1 [33, 34], Angelini et al. [14] demonstrated that treatment with 100 ng/ml recombinant human RELM- β (rhRELM- β) for 48 h significantly increased the proliferation of hPASM Cs and human lung microvascular endothelial cells (HMVECs). Renigunta et al. [12] also demonstrated that hPASM Cs transfected with RELM- β have higher proliferation compared with that of the wild-type cells. In the present study, our result showed that rhRELM- β promoted hPASM C

Pulmonary arterioles





proliferation in a dose-dependent manner. To further investigate the mitogenic effect of RELM-β in HPH, two approaches were used: overexpression of RELM-β in the lungs of normal rats and blockade of RELM-β in a chronic hypoxia model of PH. First, we showed that

overexpression of RELM-β induces vascular remodeling and hemodynamic changes identical to those associated with chronic hypoxia-induced PH and other forms of PH. Second, in vivo knockdown of RELM-β attenuates vascular remodeling and hemodynamic changes associated

(See figure on next page.)

Fig. 8 RELM- β promotes cell proliferation and Ca^{2+} release in primary cultured hPASCs. The cell viability of hPASCs treated with different concentrations (0 ng/ml, 5 ng/ml, 10 ng/ml, 20 ng/ml, or 40 ng/ml) of RELM- β for 0, 24, 48 or 72 h using the CCK-8 assay (**a**). The percentage of EdU-positive hPASCs treated with 0 (control) or 20 ng/ml RELM- β for 48 h using EdU immunofluorescent staining (**b, c**). RELM- β enhanced the store-operated Ca^{2+} entry intracellular Ca^{2+} concentration ($[\text{Ca}^{2+}]_i$) in hPASCs. RELM- β (20 ng/ml for 48 h) enhanced SOCE in hPASCs. Time course of $\Delta[\text{Ca}^{2+}]_i$ ($\Delta\text{F340/F380}$) before and after the restoration of extracellular Ca^{2+} to 2.5 mM in control hPASCs (top) and RELM- β -treated (20 ng/ml for 48 h) hPASCs (bottom) perfused with Ca^{2+} -free Krebs–Ringer bicarbonate solution (KRS) containing 10 μM cyclopiazonic acid (CPA) and 5 μM nifedipine. Ca^{2+} -free KRS also contained 1 mM EGTA to chelate any residual Ca^{2+} . The average peak change in $\Delta[\text{Ca}^{2+}]_i$ ($\Delta\text{F340/F380}$) after restoration of extracellular Ca^{2+} (SOCE) in control and RELM- β -treated hPASCs (right) (**d**). $n = 3$ in each group. * $P < 0.05$ versus control group; ** $P < 0.01$ versus control group

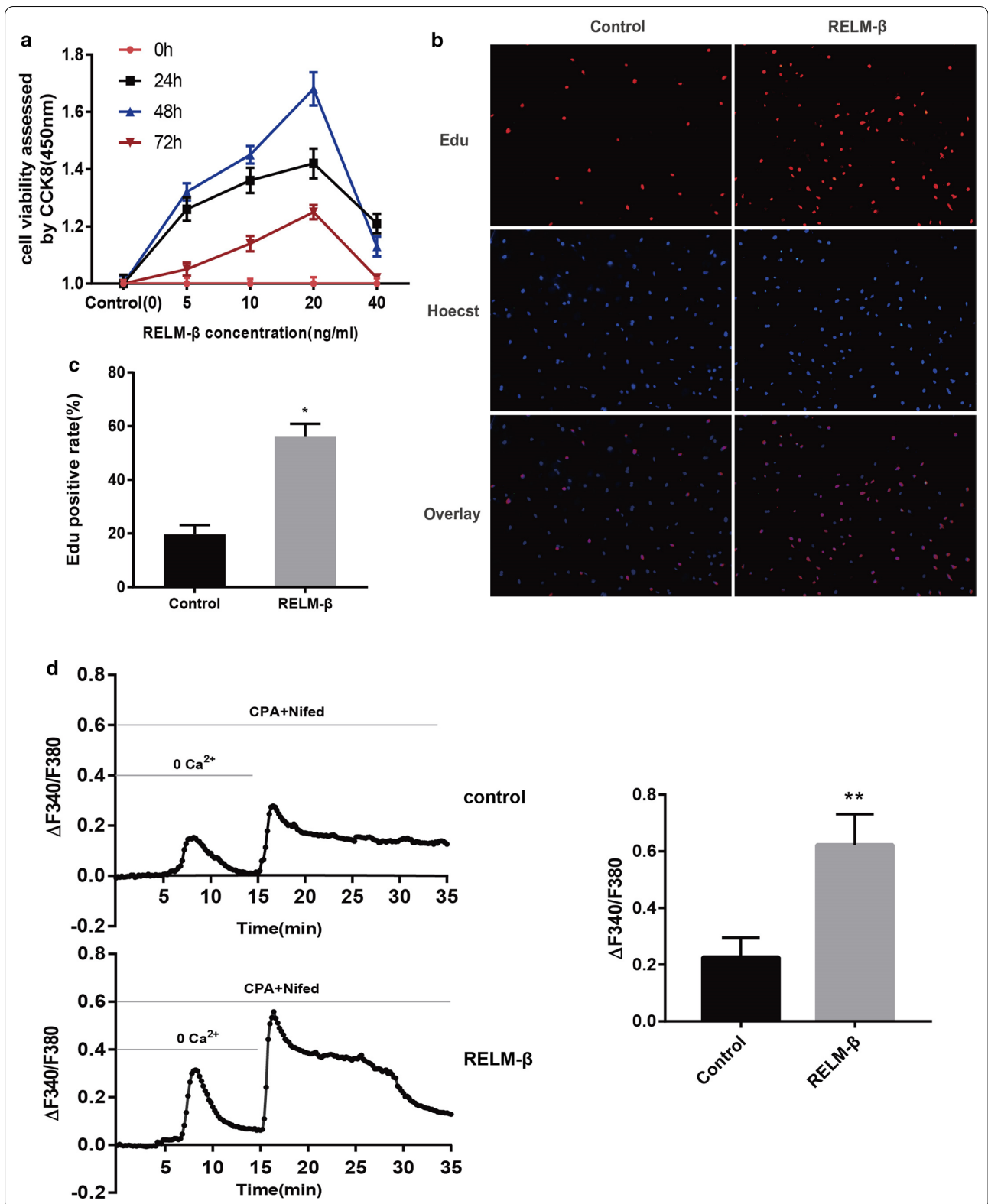
with PH. The neo-muscularization of small non-muscular pulmonary arterioles (external diameter $< 200 \mu\text{m}$) is the main source of pulmonary vascular resistance and the hallmark of HPH [35, 36]. Then, we showed that RELM- β gene transfer into the pulmonary tissue induces media thickening and increases the proportion of partially muscular and fully muscular arterioles. RELM- β knockdown has an opposite effect. These results suggest that RELM- β directly enhances proliferation and plays an important role in the development of PH, which is completely consistent with that of RELM- α [24].

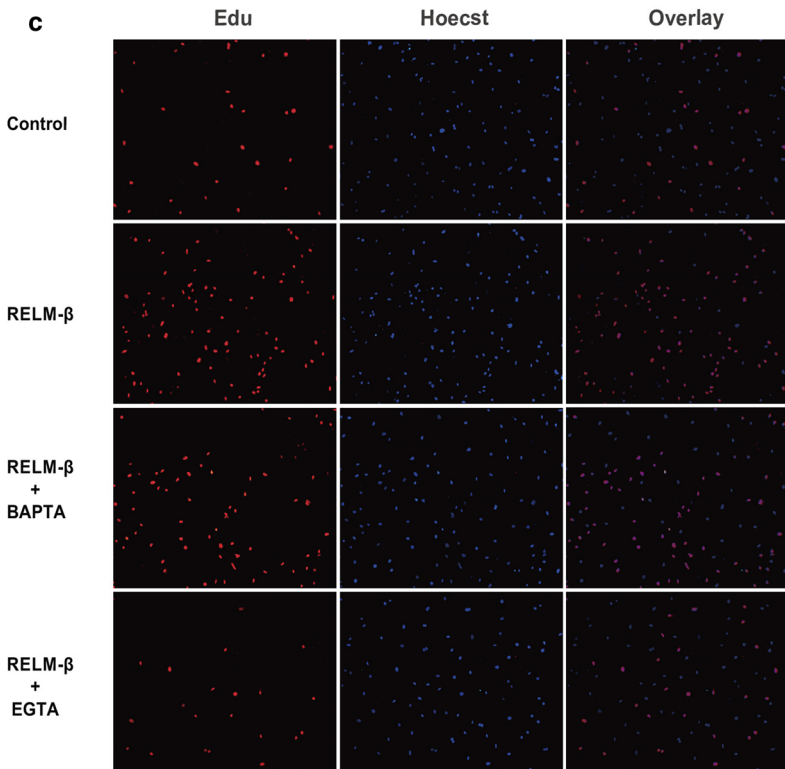
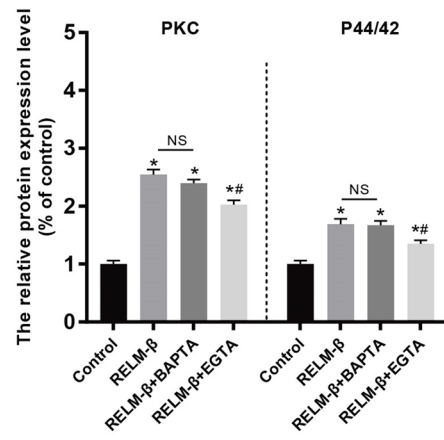
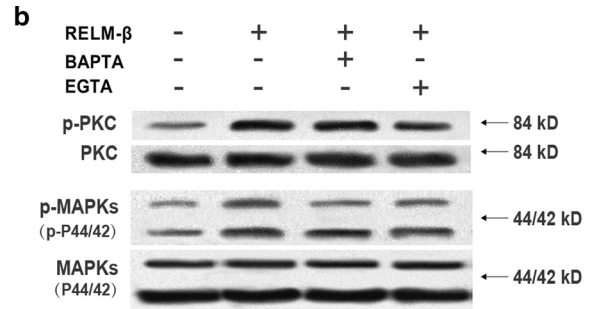
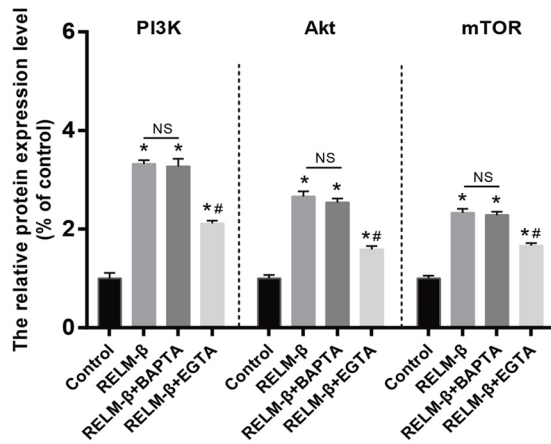
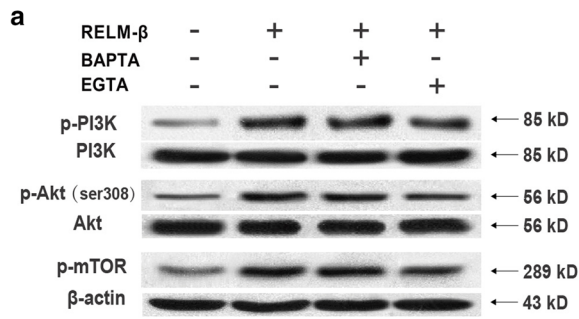
RELM- α is the first member of the RELM family identified in the studies of pulmonary diseases in rodents. Humans lack the RELM- α gene, but RELM- β shares 69% cDNA sequence identity with RELM- α , and their homology in the amino acid sequence is as high as 58.6% [8]. Additionally, the expression pattern and function of the two molecules are very similar. Therefore, RELM- β is considered a direct functional homolog of RELM- α in humans. Teng et al. [9, 37] detected a hypoxia inducible factor (HIF)-binding site in the 3' region of the RELM- α gene promoter. This finding may explain the regulatory effect of hypoxia on RELM- α and RELM- β . A previous study demonstrated that RELM- α induces intracellular calcium release via the PLC-IP₃ pathway [16]. A recent study found that RELM- α has a calcium-binding site called CaSR (Ca^{2+} -sensing receptor) and induces Ca^{2+} influx in a SOCE (store-operated calcium entry)-dependent manner [21, 38, 39]. Intracellular free calcium ($[\text{Ca}^{2+}]_i$) is a known messenger involved in cell proliferation [40]. Lee et al. [19] demonstrated that hypoxia upregulates the Ca^{2+} concentration in chicken hepatocytes. $[\text{Ca}^{2+}]_i$ enhances the PI3K, Akt, mTOR, PKC, and MAPK phosphorylation and activates cyclin E and D1 and CDK 2 and 4 signaling ultimately promoting the cells into the mitotic phase [20]. RELM- β activates PI3K/AKT and ERK/MAPK in the airway smooth muscle cells, induces the expression of TGF- β , VEGF, and VEGFR, and promotes cell proliferation [29, 32]. Renigunta et al. [12] showed that the proliferative effect of RELM- β can be suppressed by two inhibitors of PI3K (phosphatidylinositol 3-kinase) and protein kinase C (PKC). Moreover,

RELM- β can activate the Ca^{2+} /ERK/PKC signaling in goblet cells [41]. Thus, these molecular mechanisms were investigated in the present study.

Our results showed that 20 ng/ml RELM- β has a stimulatory effect on the intracellular Ca^{2+} concentration in PASCs. Treatment with CPA and nifedipine indicated that SOCE is involved in the process. Then, intracellular and extracellular Ca^{2+} blockers were used. The results showed that the stimulatory effect of RELM- β on phosphorylation of PI3K, Akt, mTOR, PKC, and MAPK is significantly suppressed by EGTA. The PASC proliferation was also decreased by *extracellular* Ca^{2+} chelation. The results indicate that RELM- β induces hPASCs proliferation at least partly through the Ca^{2+} influx. PI3K/Akt/mTOR and PKC/MAPKs are probably downstream of Ca^{2+} . To confirm the role and the relationship of PI3K/Akt/mTOR and PKC/MAPK, each pathway component was inhibited; the data indicated that these signaling pathways participate in PASC proliferation induced by RELM- β . The results are highly consistent with our *in vivo* study; the phosphorylated PI3K, Akt, mTOR, PKC, and MAPK levels are considerably increased by RELM- β overexpression in the pulmonary arterioles similar to those detected in hypoxia. RELM- β gene silencing has an opposite effect. These findings demonstrate the role of RELM- β in hPASC proliferation and HPH and suggest molecular mechanisms of action.

The major limitations of this study include the following: (1) We used a gene silencing animal model rather than a gene knockout model. RELM- α plays a crucial role in rat embryonic lung development [42]; hence, we were not sure whether RELM- β knockout causes early death of the animals. (2) The effect of RELM- β on Ca^{2+} influx is merely an observation, and the exact mechanism of Ca^{2+} release induced by RELM- β remains to be investigated. A conditional gene knockout model may be developed in the subsequent studies to investigate the function of RELM- β in HPH. Identification of a potential CaSR-binding site of RELM- β and the upstream molecules of RELM- β requires further investigation.





(See figure on previous page.)

Fig. 9 Ca^{2+} is involved in the activation of the PI3K/Akt/mTOR and PKC/MAPK pathways and PASM C proliferation by RELM- β stimulation. The WB results and relative p-PI3K, p-Akt, and p-mTOR protein levels of PASM Cs treated with 0 (control) or 20 ng/ml RELM- β , RELM- β + 10 μ M BAPTA-AM, or RELM- β + 4 mM EGTA (with 0 mM extracellular Ca^{2+}) (a). The WB results and relative p-PKC and p-MAPK protein levels of PASM Cs treated with 0 (control) or 20 ng/ml RELM- β , RELM- β + BAPTA, or RELM- β + EGTA for 48 h (b). The percentage of Edu-positive PASM Cs treated with 0 (control) or 20 ng/ml RELM- β , RELM- β + BAPTA-AM, or RELM- β + EGTA for 48 h using Edu immunofluorescent staining (c). n = 3 in each group. *P < 0.05 versus the control group; #P < 0.05 versus the RELM- β group

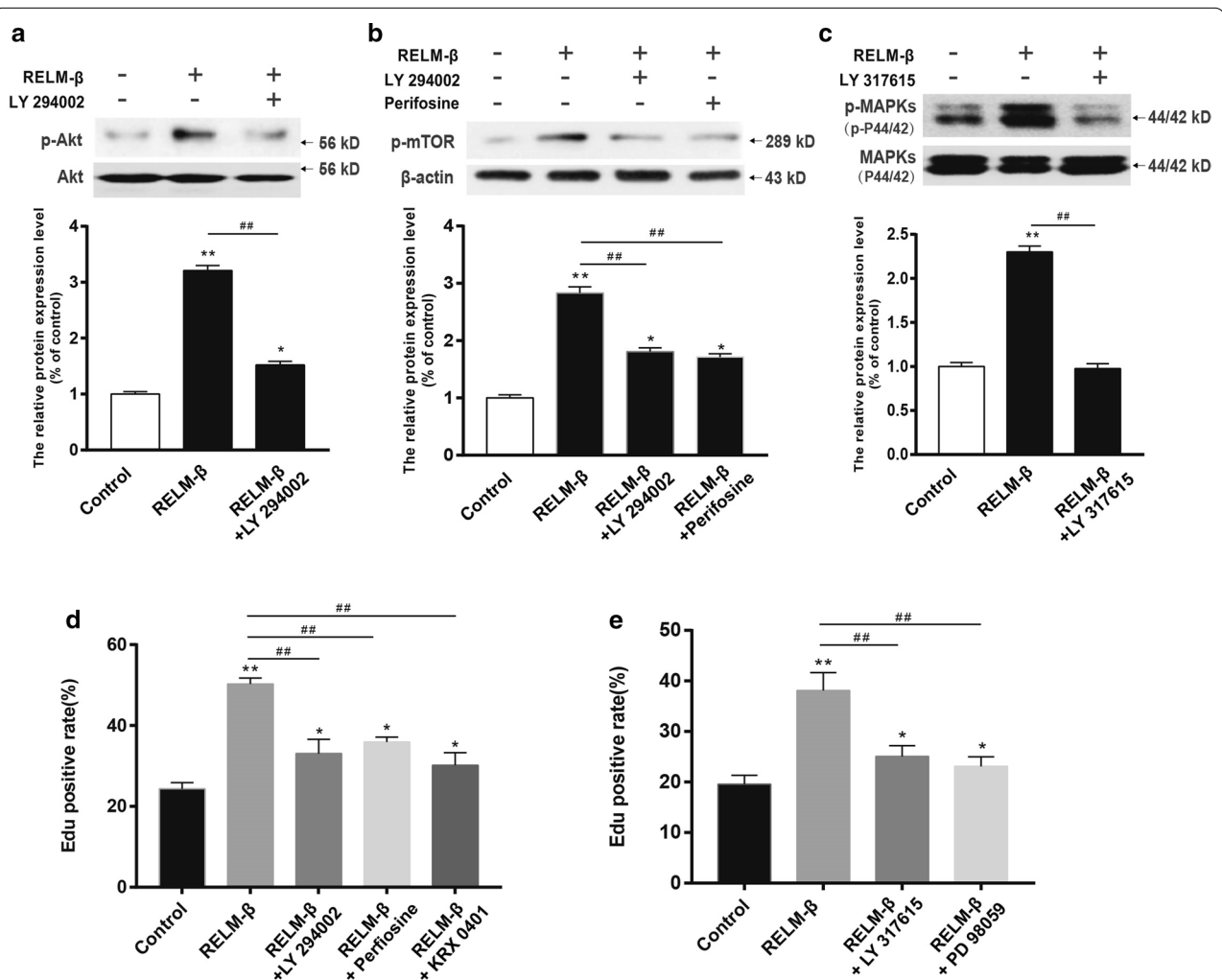


Fig. 10 Involvement of PI3K/Akt/mTOR and PKC/MAPKs in RELM- β -induced PASM C proliferation. The WB results and relative p-Akt protein levels of PASM Cs treated with 0 (control) or 20 ng/ml RELM- β or RELM- β + LY294002 (10 μ M, a PI3K inhibitor) (a). The WB results and relative p-mTOR protein levels of PASM Cs treated with 0 (control) or 20 ng/ml RELM- β , RELM- β + LY294002 and RELM- β + perifosine (100 nM, an Akt inhibitor) (b). The WB results and relative p-MAPK protein levels of PASM Cs treated with 0 (control) or 20 ng/ml RELM- β or RELM- β + LY317615 (10 μ M, a PKC inhibitor) (c). The percentage of Edu-positive PASM Cs treated with 0 (control) or 20 ng/ml RELM- β , RELM- β + LY294002, RELM- β + perifosine, or RELM- β + rapamycin (100 nM, a mTOR inhibitor) (d) and with RELM- β + LY317615 or RELM- β + PD98059 (20 μ M, a MAPK inhibitor) (e) for 48 h using Edu immunofluorescence staining (c). n = 3 in each group. *P < 0.05 versus the control group; **P < 0.01 versus the control group; ###P < 0.01 between two groups indicated by a line

Conclusion

Thus, our study demonstrated that RELM- β is induced in hypoxia and has a mitogenic effect in HPH. This effect was observed in a rat model of HPH and cultured primary hPASCs. These results suggest that RELM- β may induce PASC proliferation and pulmonary artery remodeling leading to HPH at least partially through the PI3K/Akt/mTOR and PKC/MAPK pathways. The phosphorylation of these molecules is apparently activated by Ca^{2+} influx. Our findings contribute to the understanding of the pathophysiology of RELM- β in HPH and assist in the development of novel therapies for the disease.

Abbreviations

PAH: Pulmonary arterial hypertension; HPH: Hypoxia-induced pulmonary hypertension; PASCs: Pulmonary arterial smooth muscle cells; mPAP: Mean pulmonary arterial pressure; mRVSP: Mean right ventricular systolic pressure; RVHI: Right ventricular hypertrophy index; BALF: Bronchoalveolar lavage fluid.

Acknowledgements

The authors acknowledge the work of all investigators involved in the present study.

Authors' contributions

AGD and YLJ conceived the original idea for the study. AGD, YLJ, and HST participated in the design and supervision of the study. HT wrote the first draft of the manuscript, and the final content was developed in collaboration with all authors. RCH, LMZ, LL, YW, LWL, and LZJ contributed to acquisition of data. HST, LL, YW, YYF, and RWW contributed to data analysis and interpretation. AGD, LL, YW, and GYL contributed to the conception, design of the study, and revision of the manuscript. All authors read and approved the final manuscript.

Funding

This work was supported by the National Natural Science Foundation of China (Grants Nos. 81270118 and 81570052), Natural Science Foundation of Hunan Province, China (Grant No. 2017JJ2160).

Availability of data and materials

All data generated or analyzed during this study are included in this published article and its supplementary information files. The datasets used and/or analyzed during the current study are available from the corresponding author on reasonable request.

Ethics approval and consent to participate

All experiments involving animals were performed in accordance with the Guide for the Care and Use of Laboratory Animals and approved by the Institutional Animal Care Committee (IACUC), which is accredited by the Association for Assessment and Accreditation of Laboratory Animal Care International, China and Experimental Animal Committee of the Hunan University of Chinese Medicine (License Numbers: XMBH-201910080005).

Consent for publication

Not applicable.

Competing interests

The authors declare that they have no competing interests.

Author details

¹ Department of Respiratory Medicine & Department of Geriatric, Hunan Provincial People's Hospital/The First Affiliated Hospital of Hunan Normal University, Changsha 410016, Hunan, People's Republic of China. ² Department of Respiratory Diseases, Medical School, Hunan University of Chinese Medicine, Changsha 410208, Hunan, People's Republic of China. ³ State Key

Lab of Respiratory Diseases, The First Affiliated Hospital, Guangzhou Medical University, Guangzhou 510120, Guangdong, People's Republic of China.

Received: 29 July 2020 Accepted: 9 December 2020

Published online: 06 January 2021

References

1. Stenmark KR, Fagan KA, Frid MG. Hypoxia-induced pulmonary vascular remodeling: cellular and molecular mechanisms. *Circ Res*. 2006;99(7):675–91.
2. Sahay S. Evaluation and classification of pulmonary arterial hypertension. *J Thorac Dis*. 2019;11(Suppl 14):S1789–99.
3. Opitz I, Ulrich S. Pulmonary hypertension in chronic obstructive pulmonary disease and emphysema patients: prevalence, therapeutic options and pulmonary circulatory effects of lung volume reduction surgery. *J Thorac Dis*. 2018;10(Suppl 23):S2763–74.
4. Campo A, Mathai SC, Le Pavec J, et al. Outcomes of hospitalisation for right heart failure in pulmonary arterial hypertension. *Eur Respir J*. 2011;38(2):359–67.
5. Thenappan T, Prins KW, Pritzker MR, Scandurra J, Volmers K, Weir EK. The critical role of pulmonary arterial compliance in pulmonary hypertension. *Ann Am Thorac Soc*. 2016;13(2):276–84.
6. Li MX, Jiang DQ, Wang Y, et al. Signal mechanisms of vascular remodeling in the development of pulmonary arterial hypertension. *J Cardiovasc Pharmacol*. 2016;67(2):182–90.
7. Steppan CM, Brown EJ, Wright CM, et al. A family of tissue-specific resistin-like molecules. *Proc Natl Acad Sci USA*. 2001;98(2):502–6.
8. Yang RZ, Huang Q, Xu A, et al. Comparative studies of resistin expression and phylogenomics in human and mouse. *Biochem Biophys Res Commun*. 2003;310(3):927–35.
9. Teng X, Li D, Champion HC, Johns RA. FIZZ1/RELMalpha, a novel hypoxia-induced mitogenic factor in lung with vasoconstrictive and angiogenic properties. *Circ Res*. 2003;92(10):1065–7.
10. Yamaji-Kegan K, Su Q, Angelini DJ, Champion HC, Johns RA. Hypoxia-induced mitogenic factor has proangiogenic and proinflammatory effects in the lung via VEGF and VEGF receptor-2. *Am J Physiol Lung Cell Mol Physiol*. 2006;291(6):L1159–68.
11. Yamaji-Kegan K, Su Q, Angelini DJ, Myers AC, Cheadle C, Johns RA. Hypoxia-induced mitogenic factor (HIMF/FIZZ1/RELMalpha) increases lung inflammation and activates pulmonary microvascular endothelial cells via an IL-4-dependent mechanism. *J Immunol*. 2010;185(9):5539–48.
12. Renigunta A, Hild C, Rose F, et al. Human RELMbeta is a mitogenic factor in lung cells and induced in hypoxia. *FEBS Lett*. 2006;580(3):900–3.
13. Liu T, Baek HA, Yu H, et al. FIZZ2/RELM- β induction and role in pulmonary fibrosis. *J Immunol*. 2011;187(1):450–61.
14. Angelini DJ, Su Q, Yamaji-Kegan K, et al. Resistin-like molecule-beta in scleroderma-associated pulmonary hypertension. *Am J Respir Cell Mol Biol*. 2009a;41(5):553–61.
15. Yamaji-Kegan K, Takimoto E, Zhang A, et al. Hypoxia-induced mitogenic factor (FIZZ1/RELMalpha) induces endothelial cell apoptosis and subsequent interleukin-4-dependent pulmonary hypertension. *Am J Physiol Lung Cell Mol Physiol*. 2014;306(12):L1090–103.
16. Fan C, Su Q, Li Y, et al. Hypoxia-induced mitogenic factor/FIZZ1 induces intracellular calcium release through the PLC-IP(3) pathway. *Am J Physiol Lung Cell Mol Physiol*. 2009;297(2):L263–70.
17. Han L, Song N, Hu X, et al. Inhibition of RELM-beta prevents hypoxia-induced overproliferation of human pulmonary artery smooth muscle cells by reversing PLC-mediated KCNK3 decline. *Life Sci*. 2020;246:117419.
18. Fruman DA, Chiu H, Hopkins BD, Bagrodia S, Cantley LC, Abraham RT. The PI3K pathway in human disease. *Cell*. 2017;170(4):605–35.
19. Lee SH, Lee MY, Lee JH, Han HJ. A potential mechanism for short time exposure to hypoxia-induced DNA synthesis in primary cultured chicken hepatocytes: correlation between Ca^{2+} /PKC/MAPKs and PI3K/Akt/mTOR. *J Cell Biochem*. 2008;104(5):1598–611.
20. Ryu JM, Lee MY, Yun SP, Han HJ. High glucose regulates cyclin D1/E of human mesenchymal stem cells through TGF-beta1 expression via Ca^{2+} /PKC/MAPKs and PI3K/Akt/mTOR signal pathways. *J Cell Physiol*. 2010;224(1):59–70.

21. Zeng X, Zhu L, Xiao R, et al. Hypoxia-induced mitogenic factor acts as a nonclassical ligand of calcium-sensing receptor, therapeutically exploitable for intermittent hypoxia-induced pulmonary hypertension. *Hypertension*. 2017;69(5):844–54.
22. Jiang Y, Wang J, Tian H, et al. Increased SUMO-1 expression in response to hypoxia: interaction with HIF-1 α in hypoxic pulmonary hypertension. *Int J Mol Med*. 2015;36(1):271–81.
23. Angelini DJ, Su Q, Yamaji-Kegan K, et al. Hypoxia-induced mitogenic factor (HIMF/FIZZ1/RELM α) in chronic hypoxia- and antigen-mediated pulmonary vascular remodeling. *Respir Res*. 2013;14:1.
24. Angelini DJ, Su Q, Yamaji-Kegan K, et al. Hypoxia-induced mitogenic factor (HIMF/FIZZ1/RELM α) induces the vascular and hemodynamic changes of pulmonary hypertension. *Am J Physiol Lung Cell Mol Physiol*. 2009b;296(4):L582–93.
25. Zhang R, Shi L, Zhou L, et al. Transgelin as a therapeutic target to prevent hypoxic pulmonary hypertension. *Am J Physiol Lung Cell Mol Physiol*. 2014;306(6):L574–83.
26. Jiang Y, Zhou Y, Peng G, et al. TRPC channels mediated calcium entry is required for proliferation of human airway smooth muscle cells induced by nicotine-nAChR. *Biochimie*. 2019;158:139–48.
27. Mishra A, Wang M, Schlotman J, et al. Resistin-like molecule-beta is an allergen-induced cytokine with inflammatory and remodeling activity in the murine lung. *Am J Physiol Lung Cell Mol Physiol*. 2007;293(2):L305–13.
28. Kushiyama A, Shojima N, Ogihara T, et al. Resistin-like molecule beta activates MAPKs, suppresses insulin signaling in hepatocytes, and induces diabetes, hyperlipidemia, and fatty liver in transgenic mice on a high fat diet. *J Biol Chem*. 2005;280(51):42016–25.
29. Fang C, Meng Q, Wu H, et al. Resistin-like molecule-beta is a human airway remodelling mediator. *Eur Respir J*. 2012;39(2):458–66.
30. Holcomb IN, Kabakoff RC, Chan B, et al. FIZZ1, a novel cysteine-rich secreted protein associated with pulmonary inflammation, defines a new gene family. *EMBO J*. 2000;19(15):4046–55.
31. Grainge C, Dulay V, Ward J, et al. Resistin-like molecule- β is induced following bronchoconstriction of asthmatic airways. *Respirology*. 2012;17(7):1094–100.
32. Fang CL, Yin LJ, Sharma S, et al. Resistin-like molecule- β (RELM- β) targets airways fibroblasts to effect remodelling in asthma: from mouse to man. *Clin Exp Allergy*. 2015;45(5):940–52.
33. Tong Q, Zheng L, Lin L, et al. VEGF is upregulated by hypoxia-induced mitogenic factor via the PI-3K/Akt-NF-kappaB signaling pathway. *Respir Res*. 2006;7:37.
34. Jiang Y, Zhou X, Hu R, Dai A. TGF- β 1-induced SMAD2/3/4 activation promotes RELM- β transcription to modulate the endothelium-mesenchymal transition in human endothelial cells. *Int J Biochem Cell Biol*. 2018;105:52–60.
35. Johns RA. Th2 inflammation, hypoxia-induced mitogenic factor/FIZZ1, and pulmonary hypertension and vascular remodeling in schistosomiasis. *Am J Respir Crit Care Med*. 2010;181(3):203–5.
36. Woo KV, Ornitz DM, Singh GK. Diagnosis and pathophysiological mechanisms of group 3 hypoxia-induced pulmonary hypertension. *Curr Treat Options Cardiovasc Med*. 2019;21(3):16.
37. Johns RA, Takimoto E, Meuchel LW, et al. Hypoxia-inducible factor 1 α is a critical downstream mediator for hypoxia-induced mitogenic factor (FIZZ1/RELM α)-induced pulmonary hypertension. *Arterioscler Thromb Vasc Biol*. 2016;36(1):134–44.
38. Kumar S, Wang G, Liu W, et al. Hypoxia-induced mitogenic factor promotes cardiac hypertrophy via calcium-dependent and hypoxia-inducible factor-1 α mechanisms. *Hypertension*. 2018;72(2):331–42.
39. Boucherat O, Paulin R, Provencher S, Bonnet S. New insights into HIMF (hypoxia-induced mitogenic factor)-mediated signaling pathways in pulmonary hypertension. *Arterioscler Thromb Vasc Biol*. 2019;39(12):2451–3.
40. Kuhr FK, Smith KA, Song MY, Levitan I, Yuan JX. New mechanisms of pulmonary arterial hypertension: role of Ca²⁺ signaling. *Am J Physiol Heart Circ Physiol*. 2012;302(8):H1546–62.
41. Krimi RB, Kotelevets L, Dubuquoy L, et al. Resistin-like molecule beta regulates intestinal mucous secretion and curtails TNBS-induced colitis in mice. *Inflamm Bowel Dis*. 2008;14(7):931–41.
42. Wagner KF, Hellberg AK, Balenger S, et al. Hypoxia-induced mitogenic factor has antiapoptotic action and is upregulated in the developing lung: coexpression with hypoxia-inducible factor-2 α . *Am J Respir Cell Mol Biol*. 2004;31(3):276–82.

Publisher's Note

Springer Nature remains neutral with regard to jurisdictional claims in published maps and institutional affiliations.

Ready to submit your research? Choose BMC and benefit from:

- fast, convenient online submission
- thorough peer review by experienced researchers in your field
- rapid publication on acceptance
- support for research data, including large and complex data types
- gold Open Access which fosters wider collaboration and increased citations
- maximum visibility for your research: over 100M website views per year

At BMC, research is always in progress.

Learn more biomedcentral.com/submissions

